

**DOCKETED**

<b>Docket Number:</b>	20-SPPE-03
<b>Project Title:</b>	Gilroy Backup Generating Facility
<b>TN #:</b>	237629
<b>Document Title:</b>	GFGF Caterpillar Use Letter and Caterpillar Specification Sheets
<b>Description:</b>	N/A
<b>Filer:</b>	Scott Galati
<b>Organization:</b>	DayZenLLC
<b>Submitter Role:</b>	Applicant Representative
<b>Submission Date:</b>	5/3/2021 1:19:12 PM
<b>Docketed Date:</b>	5/3/2021



P. O. Box 2128 -- San Leandro, CA 94577  
800-963-6446

Mr. Scott A. Galati  
DayZen LLC  
1720 Park Place Drive  
Carmichael, CA 95608

May 3, 2021

RE: Approval of Caterpillar datasheets for public use

Dear Mr. Galati,

In our role as Caterpillar's authorized dealer covering most counties in Northern CA and Oregon we are pleased to share Caterpillar's response here approving public use of Caterpillar's datasheets based upon the following language provided by Cat:

Terms of use within the Legal Notices from the Legal link at the bottom of the Electric Power portion of Cat's website (<https://www.cat.com>) says that in using the material from our site, users are granted a license for "legitimate internal business purposes and purposes otherwise consistent with our Terms of Use". Full language is set forth below.

Caterpillar Inc. hereby authorizes AWS's use of our copyrighted material downloaded from Caterpillar's website, contained in AWS's application with the California Energy Commission, for use in a public proceeding.

**Grant of License**

Caterpillar grants you a limited, non-exclusive, non-transferable, non-assignable license (without the right to sublicense) to access and use the Sites solely in a commercially reasonable manner for your legitimate internal business purposes and purposes otherwise consistent with these Terms of Use. You may not:

- Reproduce, modify, publish, distribute, publicly display, adapt, alter, translate, or create derivative works from any Site or Content.
- Sublicense, lease, sell, rent, loan, or otherwise transfer any Site or Content to any third party.
- Reverse engineer, de-compile, disassemble, or otherwise attempt to derive the source code for any Site or Content.
- Otherwise use or copy any Site or Content except as expressly allowed under this Grant of License and the terms of these Terms of Use.
- Use any Site or Content in a "service bureau" or similar structure whereby third parties obtain use of any Site or Content through you.
- Remove, obscure, or alter any copyright, trademark, or other proprietary notices embedded in, affixed to or accessed in conjunction with any Site or Content.

Sincerely, PETERSON POWER SYSTEMS

A handwritten signature in black ink that reads "Robert M. Tanzer". The signature is written in a cursive, flowing style.

Robert M. Tanzer, Sales Engineer/Project Mngr

# Cat® 3516C

## Diesel Generator Sets



Image shown may not reflect actual configuration

Bore – mm (in)	170 (6.69)
Stroke – mm (in)	215 (8.46)
Displacement – L (in <sup>3</sup> )	78 (4764.73)
Compression Ratio	14.7:1
Aspiration	TA
Fuel System	EUI
Governor Type	ADEM™ A3

Standby 60 Hz ekW (kVA)	Mission Critical 60 Hz ekW (kVA)	Prime 60 Hz ekW (kVA)	Continuous 60 Hz ekW (kVA)	Emissions Performance
2500 (3125)	2500 (3125)	2250 (2812)	2050 (2562)	U.S. EPA Stationary Emergency Use Only (Tier 2)

### Standard Features

#### Cat® Diesel Engine

- Meets U.S. EPA Stationary Emergency Use Only (Tier 2) emission standards
- Reliable performance proven in thousands of applications worldwide

#### Generator Set Package

- Accepts 100% block load in one step and meets other NFPA 110 loading requirements
- Conforms to ISO 8528-5 G3 load acceptance requirements
- Reliability verified through torsional vibration, fuel consumption, oil consumption, transient performance, and endurance testing

#### Alternators

- Superior motor starting capability minimizes need for oversizing generator
- Designed to match performance and output characteristics of Cat diesel engines

#### Cooling System

- Cooling systems available to operate in ambient temperatures up to 50°C (122°F)
- Tested to ensure proper generator set cooling

#### EMCP 4 Control Panels

- User-friendly interface and navigation
- Scalable system to meet a wide range of installation requirements
- Expansion modules and site specific programming for specific customer requirements

#### Warranty

- 24 months/1000-hour warranty for standby and mission critical ratings
- 12 months/unlimited hour warranty for prime and continuous ratings
- Extended service protection is available to provide extended coverage options

#### Worldwide Product Support

- Cat dealers have over 1,800 dealer branch stores operating in 200 countries
- Your local Cat dealer provides extensive post-sale support, including maintenance and repair agreements

#### Financing

- Caterpillar offers an array of financial products to help you succeed through financial service excellence
- Options include loans, finance lease, operating lease, working capital, and revolving line of credit
- Contact your local Cat dealer for availability in your region

## Optional Equipment

### Engine

#### Air Cleaner

- Single element
- Dual element

#### Muffler

- Industrial grade (15 dB)

#### Starting

- Standard batteries
- Oversized batteries
- Standard electric starter(s)
- Heavy duty electric starter(s)
- Air starter(s)
- Jacket water heater

### Alternator

#### Output voltage

- 380V     6300V
- 440V     6600V
- 480V     6900V
- 600V     12470V
- 2400V    13200V
- 4160V    13800V

#### Temperature Rise (over 40°C ambient)

- 150°C
- 125°C/130°C
- 105°C
- 80°C

#### Winding type

- Random wound
- Form wound

#### Excitation

- Internal excitation (IE)
- Permanent magnet (PM)

#### Attachments

- Anti-condensation heater
- Stator and bearing temperature monitoring and protection

### Power Termination

#### Type

- Bus bar
- Circuit breaker
- 1600A     2000A
- 2500A     3000A
- 3200A     4000A
- 5000A
- IEC         UL
- 3-pole     4-pole
- Manually operated
- Electrically operated

#### Trip Unit

- LSI         LSI-G
- LSI-G-P

### Control System

#### Controller

- EMCP 4.2B
- EMCP 4.3
- EMCP 4.4

#### Attachments

- Local annunciator module
- Remote annunciator module
- Expansion I/O module
- Remote monitoring software

#### Charging

- Battery charger – 10A
- Battery charger – 20A
- Battery charger – 35A

### Vibration Isolators

- Rubber
- Spring
- Seismic rated

### Cat Connect

#### Connectivity

- Ethernet
- Cellular
- Satellite

### Extended Service Options

#### Terms

- 2 year (prime)
- 3 year
- 5 year
- 10 year

#### Coverage

- Silver
- Gold
- Platinum
- Platinum Plus

### Ancillary Equipment

- Automatic transfer switch (ATS)
- Uninterruptible power supply (UPS)
- Paralleling switchgear
- Paralleling controls

### Certifications

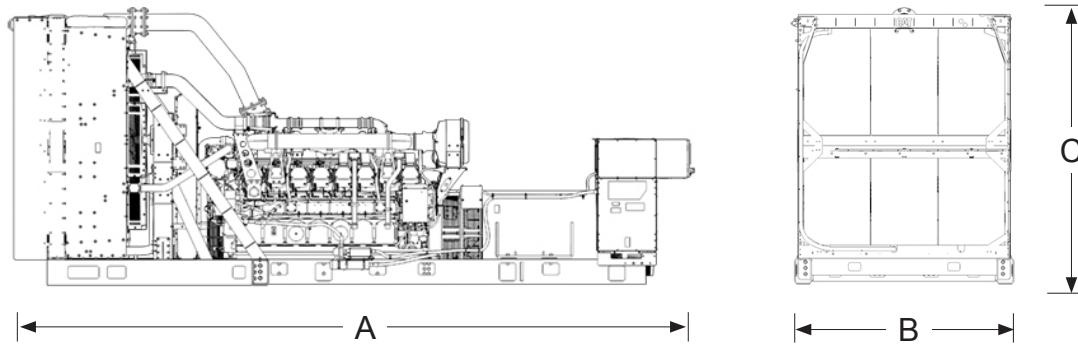
- UL2200
- CSA
- IBC seismic certification
- OSHPD pre-approval

**Note:** Some options may not be available on all models. Certifications may not be available with all model configurations. Consult factory for availability.

**Package Performance**

<b>Performance</b>	<b>Standby</b>	<b>Mission Critical</b>	<b>Prime</b>	<b>Continuous</b>
Frequency	60 Hz	60 Hz	60 Hz	60 Hz
Gen set power rating with fan	2500 ekW	2500 ekW	2250 ekW	2050 ekW
Gen set power rating with fan @ 0.8 power factor	3125 kVA	3125 kVA	2812 kVA	2562 kVA
Emissions	EPA ESE (TIER 2)	EPA ESE (TIER 2)	EPA ESE (TIER 2)	EPA ESE (TIER 2)
Performance number	EM1894-01	EM1895-02	DM8447-04	DM8268-03
<b>Fuel Consumption</b>				
100% load with fan – L/hr (gal/hr)	656.8 (175.3)	656.8 (175.3)	593.0 (156.6)	549.3 (145.1)
75% load with fan – L/hr (gal/hr)	510.8 (134.9)	510.8 (134.9)	467.8 (123.6)	435.6 (115.1)
50% load with fan – L/hr (gal/hr)	372.4 (98.4)	372.4 (98.4)	341.9 (90.3)	316.8 (83.7)
25% load with fan – L/hr (gal/hr)	219.3 (57.9)	219.3 (57.9)	203.0 (53.6)	188.9 (49.9)
<b>Cooling System</b>				
Radiator air flow restriction (system) – kPa (in. water)	0.12 (0.48)	0.12 (0.48)	0.12 (0.48)	0.12 (0.48)
Radiator air flow – m <sup>3</sup> /min (cfm)	2800.0 (98881)	2800.0 (98881)	2800.0 (98881)	2800.0 (98881)
Engine coolant capacity – L (gal)	233.0 (61.6)	233.0 (61.6)	233.0 (61.6)	233.0 (61.6)
Radiator coolant capacity – L (gal)	268.8 (71.0)	268.8 (71.0)	268.8 (71.0)	268.8 (71.0)
Total coolant capacity – L (gal)	501.8 (132.6)	501.8 (132.6)	501.8 (132.6)	501.8 (132.6)
<b>Inlet Air</b>				
Combustion air inlet flow rate – m <sup>3</sup> /min (cfm)	242.2 (7212.2)	242.2 (7212.2)	193.1 (6819.8)	183.8 (6491.7)
<b>Exhaust System</b>				
Exhaust stack gas temperature – °C (°F)	490.7 (915.2)	490.7 (915.2)	471.3 (880.4)	463.6 (866.5)
Exhaust gas flow rate – m <sup>3</sup> /min (cfm)	554.5 (19578.8)	554.5 (19578.8)	507.9 (17935.1)	476.5 (16826.7)
Exhaust system backpressure (maximum allowable) – kPa (in. water)	6.7 (27.0)	6.7 (27.0)	6.7 (27.0)	6.7 (27.0)
<b>Heat Rejection</b>				
Heat rejection to jacket water – kW (Btu/min)	826 (46992)	826 (46992)	777 (44160)	739 (42021)
Heat rejection to exhaust (total) – kW (Btu/min)	2502 (142265)	2502 (142265)	2243 (127532)	2092 (118949)
Heat rejection to aftercooler – kW (Btu/min)	786 (44723)	786 (44723)	690 (39224)	619 (35176)
Heat rejection to atmosphere from engine – kW (Btu/min)	161 (9146)	161 (9146)	150 (8542)	145 (8229)
Heat rejection from alternator – kW (Btu/min)	121 (6853)	121 (6853)	99 (5607)	94 (5368)
<b>Emissions (Nominal)</b>				
NOx mg/Nm <sup>3</sup> (g/hp-h)	2349.1 (5.32)	2349.1 (5.32)	2206.7 (4.95)	2038.1 (4.62)
CO mg/Nm <sup>3</sup> (g/hp-h)	195.4 (0.42)	195.4 (0.42)	141.2 (0.30)	124.8 (0.27)
HC mg/Nm <sup>3</sup> (g/hp-h)	42.1 (0.10)	42.1 (0.10)	44.4 (0.11)	49.2 (0.12)
PM mg/Nm <sup>3</sup> (g/hp-h)	14.1 (0.04)	14.1 (0.04)	10.9 (0.03)	11.0 (0.03)
<b>Emissions (Potential Site Variation)</b>				
NOx mg/Nm <sup>3</sup> (g/hp-h)	2818.9 (6.38)	2818.9 (6.38)	2648.0 (5.94)	2445.8 (5.55)
CO mg/Nm <sup>3</sup> (g/hp-h)	351.8 (0.76)	351.8 (0.76)	254.2 (0.55)	224.6 (0.49)
HC mg/Nm <sup>3</sup> (g/hp-h)	55.9 (0.14)	55.9 (0.14)	59.1 (0.15)	65.5 (0.16)
PM mg/Nm <sup>3</sup> (g/hp-h)	19.7 (0.05)	19.7 (0.05)	15.2 (0.04)	15.3 (0.04)

## Weights and Dimensions



Dim "A" mm (in)	Dim "B" mm (in)	Dim "C" mm (in)	Dry Weight kg (lb)
7495 (295.1)	2569 (101.2)	3009 (118.5)	17 590 (38,780)

**Note:** For reference only. Do not use for installation design. Contact your local Cat dealer for precise weights and dimensions.

## Ratings Definitions

### Standby

Output available with varying load for the duration of the interruption of the normal source power. Average power output is 70% of the standby power rating. Typical operation is 200 hours per year, with maximum expected usage of 500 hours per year.

### Mission Critical

Output available with varying load for the duration of the interruption of the normal source power. Average power output is 85% of the mission critical power rating. Typical peak demand up to 100% of rated power for up to 5% of the operating time. Typical operation is 200 hours per year, with maximum expected usage of 500 hours per year.

### Prime

Output available with varying load for an unlimited time. Average power output is 70% of the prime power rating. Typical peak demand is 100% of prime rated kW with 10% overload capability for emergency use for a maximum of 1 hour in 12. Overload operation cannot exceed 25 hours per year.

### Continuous

Output available with non-varying load for an unlimited time. Average power output is 70-100% of the continuous power rating. Typical peak demand is 100% of continuous rated kW for 100% of the operating hours.

### Applicable Codes and Standards

AS1359, CSA C22.2 No100-04, UL142, UL489, UL869, UL2200, NFPA37, NFPA70, NFPA99, NFPA110, IBC, IEC60034-1, ISO3046, ISO8528, NEMA MG1-22, NEMA MG1-33, 2014/35/EU, 2006/42/EC, 2014/30/EU.

**Note:** Codes may not be available in all model configurations. Please consult your local Cat dealer for availability.

### Data Center Applications

Tier III/Tier IV compliant per Uptime Institute requirements. ANSI/TIA-942 compliant for Rated-1 through Rated-4 data centers.

### Fuel Rates

Fuel rates are based on fuel oil of 35° API [16°C (60°F)] gravity having an LHV of 42,780 kJ/kg (18,390 Btu/lb) when used at 29°C (85°F) and weighing 838.9 g/liter (7.001 lbs/U.S. gal.)

[www.cat.com/electricpower](http://www.cat.com/electricpower)

©2017 Caterpillar  
All rights reserved.

Materials and specifications are subject to change without notice.  
The International System of Units (SI) is used in this publication.

CAT, CATERPILLAR, their respective logos, ADEM, "Caterpillar Yellow", the "Power Edge" trade dress as well as corporate and product identity used herein, are trademarks of Caterpillar and may not be used without permission.

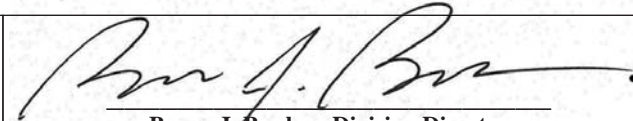


**UNITED STATES ENVIRONMENTAL PROTECTION AGENCY  
2020 MODEL YEAR  
CERTIFICATE OF CONFORMITY  
WITH THE CLEAN AIR ACT**

**OFFICE OF TRANSPORTATION  
AND AIR QUALITY  
ANN ARBOR, MICHIGAN 48105**

**Certificate Issued To:** Caterpillar Inc.  
(U.S. Manufacturer or Importer)  
**Certificate Number:** LCPXL78.1NZS-022

**Effective Date:**  
07/25/2019  
**Expiration Date:**  
12/31/2020

  
Byron J. Bunker, Division Director  
Compliance Division

**Issue Date:**  
07/25/2019  
**Revision Date:**  
N/A

**Model Year:** 2020  
**Manufacturer Type:** Original Engine Manufacturer  
**Engine Family:** LCPXL78.1NZS

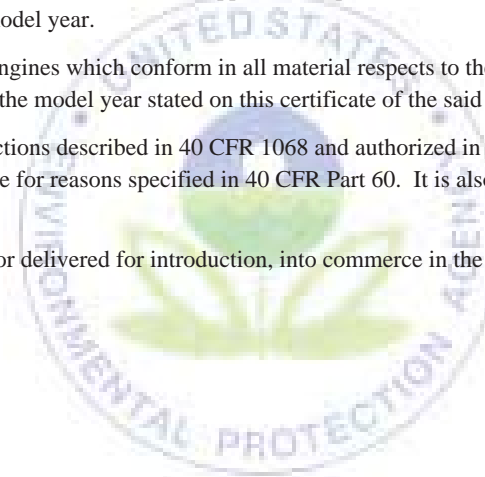
**Mobile/Stationary Indicator:** Stationary  
**Emissions Power Category:** kW>560  
**Fuel Type:** Diesel  
**After Treatment Devices:** No After Treatment Devices Installed  
**Non-after Treatment Devices:** Electronic Control, Engine Design Modification

Pursuant to Section 111 and Section 213 of the Clean Air Act (42 U.S.C. sections 7411 and 7547) and 40 CFR Part 60, and subject to the terms and conditions prescribed in those provisions, this certificate of conformity is hereby issued with respect to the test engines which have been found to conform to applicable requirements and which represent the following engines, by engine family, more fully described in the documentation required by 40 CFR Part 60 and produced in the stated model year.

This certificate of conformity covers only those new compression-ignition engines which conform in all material respects to the design specifications that applied to those engines described in the documentation required by 40 CFR Part 60 and which are produced during the model year stated on this certificate of the said manufacturer, as defined in 40 CFR Part 60.

It is a term of this certificate that the manufacturer shall consent to all inspections described in 40 CFR 1068 and authorized in a warrant or court order. Failure to comply with the requirements of such a warrant or court order may lead to revocation or suspension of this certificate for reasons specified in 40 CFR Part 60. It is also a term of this certificate that this certificate may be revoked or suspended or rendered void *ab initio* for other reasons specified in 40 CFR Part 60.

This certificate does not cover engines sold, offered for sale, or introduced, or delivered for introduction, into commerce in the U.S. prior to the effective date of the certificate.



Performance Number: EM1894

Change Level: 04

SALES MODEL:	3516C	COMBUSTION:	DIRECT INJECTION
BRAND:	CAT	ENGINE SPEED (RPM):	1,800
ENGINE POWER (BHP):	3,634	HERTZ:	60
GEN POWER WITH FAN (EKW):	2,500.0	FAN POWER (HP):	130.1
COMPRESSION RATIO:	14.7	ASPIRATION:	TA
RATING LEVEL:	STANDBY	AFTERCOOLER TYPE:	ATAAC
PUMP QUANTITY:	1	AFTERCOOLER CIRCUIT TYPE:	JW+OC, ATAAC
FUEL TYPE:	DIESEL	INLET MANIFOLD AIR TEMP (F):	122
MANIFOLD TYPE:	DRY	JACKET WATER TEMP (F):	219.2
GOVERNOR TYPE:	ADEM3	TURBO CONFIGURATION:	PARALLEL
ELECTRONICS TYPE:	ADEM3	TURBO QUANTITY:	4
CAMSHAFT TYPE:	STANDARD	TURBOCHARGER MODEL:	GT6041BN-48T-1.10
IGNITION TYPE:	CI	CERTIFICATION YEAR:	2006
INJECTOR TYPE:	EUI	CRANKCASE BLOWBY RATE (FT3/HR):	3,619.4
FUEL INJECTOR:	3920221	FUEL RATE (RATED RPM) NO LOAD (GAL/HR):	16.0
UNIT INJECTOR TIMING (IN):	64.34	PISTON SPD @ RATED ENG SPD (FT/MIN):	2,539.4
REF EXH STACK DIAMETER (IN):	12		
MAX OPERATING ALTITUDE (FT):	2,953		

INDUSTRY	SUBINDUSTRY	APPLICATION
ELECTRIC POWER	STANDARD	PACKAGED GENSET
OIL AND GAS	LAND PRODUCTION	PACKAGED GENSET

General Performance Data

THIS STANDBY RATING IS FOR A STANDBY ONLY ENGINE ARRANGEMENT. RERATING THE ENGINE TO A PRIME OR CONTINUOUS RATING IS NOT PERMITTED.

THE INLET MANIFOLD AIR TEMP LISTED IN THE HEADER, AND IN THE GENERAL PERFORMANCE DATA, IS THE AVERAGE INLET MANIFOLD TEMP FRONT TO REAR ON THE ENGINE.

GENSET POWER WITH FAN	PERCENT LOAD	ENGINE POWER	BRAKE MEAN EFF PRES (BMEP)	BRAKE SPEC FUEL CONSUMPTN (BSFC)	VOL FUEL CONSUMPTN (VFC)	INLET MFLD PRES	INLET MFLD TEMP	EXH MFLD TEMP	EXH MFLD PRES	ENGINE OUTLET TEMP
EKW	%	BHP	PSI	LB/BHP-HR	GAL/HR	IN-HG	DEG F	DEG F	IN-HG	DEG F
2,500.0	100	3,633	336	0.334	171.3	78.1	121.9	1,235.6	67.6	915.2
2,250.0	90	3,283	303	0.335	155.1	71.3	119.4	1,190.0	61.3	881.2
2,000.0	80	2,935	271	0.339	140.4	64.3	116.9	1,158.9	55.3	864.0
1,875.0	75	2,760	255	0.342	133.2	60.7	115.8	1,145.6	52.3	858.5
1,750.0	70	2,586	239	0.346	125.9	57.0	114.7	1,133.3	49.3	854.6
1,500.0	60	2,237	207	0.354	111.5	49.5	112.7	1,112.4	43.2	851.2
1,250.0	50	1,889	174	0.365	97.1	41.3	111.0	1,091.8	36.8	850.7
1,000.0	40	1,547	143	0.373	81.4	31.4	109.4	1,061.5	29.3	856.6
750.0	30	1,203	111	0.385	65.3	21.7	107.9	1,010.3	22.1	848.2
625.0	25	1,029	95	0.394	57.2	17.2	107.2	968.3	18.7	831.1
500.0	20	854	79	0.403	48.6	12.7	106.4	902.0	15.5	796.1
250.0	10	497	46	0.441	30.9	4.8	104.1	700.7	9.8	647.3

GENSET POWER WITH FAN	PERCENT LOAD	ENGINE POWER	COMPRESSOR OUTLET PRES	COMPRESSOR OUTLET TEMP	WET INLET AIR VOL FLOW RATE	ENGINE OUTLET WET EXH GAS VOL FLOW RATE	WET INLET AIR MASS FLOW RATE	WET EXH GAS MASS FLOW RATE	WET EXH VOL FLOW RATE (32 DEG F AND 29.98 IN HG)	DRY EXH VOL FLOW RATE (32 DEG F AND 29.98 IN HG)
EKW	%	BHP	IN-HG	DEG F	CFM	CFM	LB/HR	LB/HR	FT3/MIN	FT3/MIN
2,500.0	100	3,633	85	466.7	7,212.2	19,578.8	32,046.3	33,260.4	7,001.7	6,362.4
2,250.0	90	3,283	78	443.0	6,831.8	17,980.7	30,219.3	31,318.8	6,593.0	6,013.7
2,000.0	80	2,935	70	417.8	6,404.5	16,560.6	28,284.6	29,277.2	6,151.5	5,625.4
1,875.0	75	2,760	66	404.7	6,173.3	15,893.2	27,261.3	28,202.4	5,928.1	5,427.1
1,750.0	70	2,586	63	391.2	5,929.9	15,232.6	26,196.0	27,086.8	5,698.4	5,222.0
1,500.0	60	2,237	55	363.5	5,411.9	13,879.0	23,947.5	24,739.5	5,205.5	4,779.1
1,250.0	50	1,889	46	334.6	4,843.3	12,413.0	21,444.3	22,133.2	4,657.5	4,283.2
1,000.0	40	1,547	36	297.5	4,121.4	10,609.5	18,262.0	18,840.0	3,963.0	3,647.2
750.0	30	1,203	25	249.8	3,423.0	8,763.8	15,175.3	15,640.3	3,294.6	3,037.8
625.0	25	1,029	21	223.4	3,104.6	7,844.6	13,765.1	14,171.8	2,988.1	2,760.8
500.0	20	854	16	197.2	2,791.2	6,823.5	12,376.2	12,722.2	2,671.7	2,476.1
250.0	10	497	7	152.3	2,237.9	4,800.2	9,917.6	10,136.8	2,132.0	1,999.8



Heat Rejection Data

GENSET POWER WITH FAN	PERCENT LOAD	ENGINE POWER	REJECTION TO JACKET WATER	REJECTION TO ATMOSPHERE	REJECTION TO EXH	EXHAUST RECOVERY TO 350F	FROM OIL COOLER	FROM AFTERCOOLER	WORK ENERGY	LOW HEAT VALUE ENERGY	HIGH HEAT VALUE ENERGY
EKW	%	BHP	BTU/MIN	BTU/MIN	BTU/MIN	BTU/MIN	BTU/MIN	BTU/MIN	BTU/MIN	BTU/MIN	BTU/MIN
2,500.0	100	3,633	46,992	9,146	142,265	79,907	19,835	44,723	154,077	372,403	396,702
2,250.0	90	3,283	44,242	8,557	127,929	70,449	17,960	39,380	139,243	337,204	359,207
2,000.0	80	2,935	41,477	8,162	116,879	63,561	16,262	34,167	124,444	305,311	325,233
1,875.0	75	2,760	40,076	8,007	111,588	60,518	15,425	31,612	117,053	289,608	308,505
1,750.0	70	2,586	38,657	7,874	106,293	57,637	14,588	29,085	109,651	273,881	291,752
1,500.0	60	2,237	35,755	7,684	95,729	52,220	12,915	24,201	94,874	242,485	258,307
1,250.0	50	1,889	32,626	7,527	85,184	46,626	11,245	19,401	80,109	211,118	224,893
1,000.0	40	1,547	29,235	7,262	72,693	40,153	9,427	13,873	65,583	176,995	188,544
750.0	30	1,203	25,476	6,784	59,425	32,726	7,565	8,706	51,005	142,037	151,305
625.0	25	1,029	23,394	6,435	52,542	28,568	6,621	6,496	43,653	124,317	132,429
500.0	20	854	21,006	5,995	44,739	23,683	5,624	4,534	36,223	105,594	112,484
250.0	10	497	15,737	5,026	27,795	12,371	3,578	1,916	21,071	67,181	71,564

Sound Data

SOUND PRESSURE DATA FOR THIS RATING CAN BE FOUND IN PERFORMANCE NUMBER - DM8779.

Emissions Data

RATED SPEED POTENTIAL SITE VARIATION: 1800 RPM

GENSET POWER WITH FAN	EKW	2,500.0	1,875.0	1,250.0	625.0	250.0
PERCENT LOAD	%	100	75	50	25	10
ENGINE POWER	BHP	3,633	2,760	1,889	1,029	497
TOTAL NOX (AS NO2)	G/HR	22,948	14,101	7,004	3,568	3,185
TOTAL CO	G/HR	2,726	1,304	1,092	1,496	2,098
TOTAL HC	G/HR	500	499	543	408	437
PART MATTER	G/HR	185.5	123.7	132.1	139.5	141.0
TOTAL NOX (AS NO2)	(CORR 5% O2) MG/NM3	2,818.9	2,229.5	1,544.3	1,352.7	2,230.2
TOTAL CO	(CORR 5% O2) MG/NM3	351.8	213.9	252.3	594.6	1,552.7
TOTAL HC	(CORR 5% O2) MG/NM3	55.9	72.8	108.8	140.7	282.4
PART MATTER	(CORR 5% O2) MG/NM3	19.7	16.5	25.8	48.5	88.2
TOTAL NOX (AS NO2)	(CORR 5% O2) PPM	1,373	1,086	752	659	1,086
TOTAL CO	(CORR 5% O2) PPM	281	171	202	476	1,242
TOTAL HC	(CORR 5% O2) PPM	104	136	203	263	527
TOTAL NOX (AS NO2)	G/HP-HR	6.38	5.15	3.74	3.50	6.47
TOTAL CO	G/HP-HR	0.76	0.48	0.58	1.47	4.26
TOTAL HC	G/HP-HR	0.14	0.18	0.29	0.40	0.89
PART MATTER	G/HP-HR	0.05	0.05	0.07	0.14	0.29
TOTAL NOX (AS NO2)	LB/HR	50.59	31.09	15.44	7.87	7.02
TOTAL CO	LB/HR	6.01	2.88	2.41	3.30	4.62
TOTAL HC	LB/HR	1.10	1.10	1.20	0.90	0.96
PART MATTER	LB/HR	0.41	0.27	0.29	0.31	0.31

RATED SPEED NOMINAL DATA: 1800 RPM

GENSET POWER WITH FAN	EKW	2,500.0	1,875.0	1,250.0	625.0	250.0
PERCENT LOAD	%	100	75	50	25	10
ENGINE POWER	BHP	3,633	2,760	1,889	1,029	497
TOTAL NOX (AS NO2)	G/HR	19,123	11,751	5,837	2,974	2,654
TOTAL CO	G/HR	1,515	725	607	831	1,165
TOTAL HC	G/HR	376	375	408	307	329
TOTAL CO2	KG/HR	1,740	1,340	966	559	296
PART MATTER	G/HR	132.5	88.4	94.3	99.6	100.7
TOTAL NOX (AS NO2)	(CORR 5% O2) MG/NM3	2,349.1	1,857.9	1,286.9	1,127.3	1,858.5
TOTAL CO	(CORR 5% O2) MG/NM3	195.4	118.8	140.1	330.3	862.6
TOTAL HC	(CORR 5% O2) MG/NM3	42.1	54.8	81.8	105.8	212.3
PART MATTER	(CORR 5% O2) MG/NM3	14.1	11.8	18.4	34.7	63.0
TOTAL NOX (AS NO2)	(CORR 5% O2) PPM	1,144	905	627	549	905

# PERFORMANCE DATA[EM1894]

May 14, 2020

TOTAL CO	(CORR 5% O2)	PPM	156	95	112	264	690
TOTAL HC	(CORR 5% O2)	PPM	79	102	153	197	396
TOTAL NOX (AS NO2)		G/HP-HR	5.32	4.30	3.12	2.92	5.39
TOTAL CO		G/HP-HR	0.42	0.26	0.32	0.82	2.37
TOTAL HC		G/HP-HR	0.10	0.14	0.22	0.30	0.67
PART MATTER		G/HP-HR	0.04	0.03	0.05	0.10	0.20
TOTAL NOX (AS NO2)		LB/HR	42.16	25.91	12.87	6.56	5.85
TOTAL CO		LB/HR	3.34	1.60	1.34	1.83	2.57
TOTAL HC		LB/HR	0.83	0.83	0.90	0.68	0.72
TOTAL CO2		LB/HR	3,836	2,955	2,130	1,233	654
PART MATTER		LB/HR	0.29	0.19	0.21	0.22	0.22
OXYGEN IN EXH		%	9.4	10.4	11.3	12.2	14.4
DRY SMOKE OPACITY		%	1.7	1.4	1.9	2.6	4.0
BOSCH SMOKE NUMBER			0.58	0.49	0.62	0.92	1.27

## Regulatory Information

<b>EPA EMERGENCY STATIONARY</b>		<b>2011 - ----</b>				
GASEOUS EMISSIONS DATA MEASUREMENTS PROVIDED TO THE EPA ARE CONSISTENT WITH THOSE DESCRIBED IN EPA 40 CFR PART 60 SUBPART IIII AND ISO 8178 FOR MEASURING HC, CO, PM, AND NOX. THE "MAX LIMITS" SHOWN BELOW ARE WEIGHTED CYCLE AVERAGES AND ARE IN COMPLIANCE WITH THE EMERGENCY STATIONARY REGULATIONS.						
<b>Locality</b>	<b>Agency</b>	<b>Regulation</b>	<b>Tier/Stage</b>	<b>Max Limits - G/BKW - HR</b>		
U.S. (INCL CALIF)	EPA	STATIONARY	EMERGENCY STATIONARY	CO: 3.5 NOx + HC: 6.4 PM: 0.20		

## Altitude Derate Data

### ALTITUDE CORRECTED POWER CAPABILITY (BHP)

AMBIENT OPERATING TEMP (F)	30	40	50	60	70	80	90	100	110	120	NORMAL
ALTITUDE (FT)											
0	3,634	3,634	3,634	3,634	3,634	3,634	3,634	3,634	3,634	3,634	3,634
1,000	3,634	3,634	3,634	3,634	3,634	3,634	3,634	3,634	3,634	3,561	3,634
2,000	3,634	3,634	3,634	3,634	3,634	3,634	3,634	3,604	3,541	3,480	3,634
3,000	3,628	3,628	3,628	3,628	3,628	3,603	3,537	3,474	3,413	3,354	3,628
4,000	3,504	3,504	3,504	3,504	3,504	3,471	3,408	3,347	3,289	3,232	3,504
5,000	3,384	3,384	3,384	3,384	3,384	3,344	3,283	3,225	3,168	3,113	3,384
6,000	3,269	3,269	3,269	3,269	3,269	3,221	3,162	3,105	3,051	2,998	3,269
7,000	3,159	3,159	3,159	3,159	3,159	3,101	3,044	2,990	2,937	2,887	3,159
8,000	3,052	3,052	3,052	3,052	3,041	2,985	2,930	2,878	2,827	2,779	3,052
9,000	2,950	2,950	2,950	2,950	2,926	2,872	2,820	2,769	2,721	2,674	2,950
10,000	2,851	2,851	2,851	2,851	2,815	2,763	2,713	2,664	2,617	2,544	2,851

## Cross Reference

Test Spec	Setting	Engine Arrangement	Engineering Model	Engineering Model Version	Start Effective Serial Number	End Effective Serial Number
4577175	LL1857	5084280	GS336	-	SBK02483	
4581566	LL6759	5157721	PG243	-	LYM00001	

## Supplementary Data

Type	Classification	Performance Number
SOUND	SOUND PRESSURE	DM8779

## Performance Parameter Reference

**Parameters Reference:DM9600-11**  
**PERFORMANCE DEFINITIONS**

## PERFORMANCE DEFINITIONS DM9600

## APPLICATION:

Engine performance tolerance values below are representative of a typical production engine tested in a calibrated dynamometer test cell at SAE J1995 standard reference conditions. Caterpillar maintains ISO9001:2000 certified quality management systems for engine test Facilities to assure accurate calibration of test equipment. Engine test data is corrected in accordance with SAE J1995. Additional reference material SAE J1228, J1349, ISO 8665, 3046-1:2002E, 3046-3:1989, 1585, 2534, 2288, and 9249 may apply in part or are similar to SAE J1995. Special engine rating request (SERR) test data shall be noted.

## PERFORMANCE PARAMETER TOLERANCE FACTORS:

Power +/- 3%

Torque +/- 3%

Exhaust stack temperature +/- 8%

Inlet airflow +/- 5%

Intake manifold pressure-gage +/- 10%

Exhaust flow +/- 6%

Specific fuel consumption +/- 3%

Fuel rate +/- 5%

Specific DEF consumption +/- 3%

DEF rate +/- 5%

Heat rejection +/- 5%

Heat rejection exhaust only +/- 10%

Heat rejection CEM only +/- 10%

Heat Rejection values based on using treated water.

Torque is included for truck and industrial applications, do not use for Gen Set or steady state applications.

On C7 - C18 engines, at speeds of 1100 RPM and under these values are provided for reference only, and may not meet the tolerance listed.

These values do not apply to C280/3600. For these models, see the tolerances listed below.

## C280/3600 HEAT REJECTION TOLERANCE FACTORS:

Heat rejection +/- 10%

Heat rejection to Atmosphere +/- 50%

Heat rejection to Lube Oil +/- 20%

Heat rejection to Aftercooler +/- 5%

## TEST CELL TRANSDUCER TOLERANCE FACTORS:

Torque +/- 0.5%

Speed +/- 0.2%

Fuel flow +/- 1.0%

Temperature +/- 2.0 C degrees

Intake manifold pressure +/- 0.1 kPa

OBSERVED ENGINE PERFORMANCE IS CORRECTED TO SAE J1995 REFERENCE AIR AND FUEL CONDITIONS.

## REFERENCE ATMOSPHERIC INLET AIR

## FOR 3500 ENGINES AND SMALLER

SAE J1228 AUG2002 for marine engines, and J1995 JAN2014 for other engines, reference atmospheric pressure is 100 KPA (29.61 in hg), and standard temperature is 25deg C (77 deg F) at 30% relative humidity at the stated aftercooler water temp, or inlet manifold temp.

## FOR 3600 ENGINES

Engine rating obtained and presented in accordance with ISO 3046/1 and SAE J1995 JANJAN2014 reference atmospheric pressure is 100 KPA (29.61 in hg), and standard temperature is 25deg C (77 deg F) at 30% relative humidity and 150M altitude at the stated aftercooler water temperature.

## MEASUREMENT LOCATION FOR INLET AIR TEMPERATURE

Location for air temperature measurement air cleaner inlet at stabilized operating conditions.

## REFERENCE EXHAUST STACK DIAMETER

The Reference Exhaust Stack Diameter published with this dataset is only used for the calculation of Smoke Opacity values displayed in this dataset. This value does not necessarily represent the actual stack diameter of the engine due to the variety of exhaust stack adapter options available. Consult the price list, engine order or general dimension drawings for the actual stack diameter size ordered or options available.

## REFERENCE FUEL

## DIESEL

Reference fuel is #2 distillate diesel with a 35API gravity;

A lower heating value is 42,780 KJ/KG (18,390 BTU/LB) when used at 29 deg C (84.2 deg F), where the density is 838.9 G/Liter (7.001 Lbs/Gal).

## GAS

Reference natural gas fuel has a lower heating value of 33.74 KJ/L (905 BTU/CU Ft). Low BTU ratings are based on 18.64 KJ/L (500 BTU/CU FT) lower heating value gas. Propane ratings are based on 87.56 KJ/L (2350 BTU/CU Ft) lower heating value gas.

**PERFORMANCE DATA[EM1894]**

ENGINE POWER (NET) IS THE CORRECTED FLYWHEEL POWER (GROSS) LESS EXTERNAL AUXILIARY LOAD

Engine corrected gross output includes the power required to drive standard equipment; lube oil, scavenge lube oil, fuel transfer, common rail fuel, separate circuit aftercooler and jacket water pumps. Engine net power available for the external (flywheel) load is calculated by subtracting the sum of auxiliary load from the corrected gross flywheel out put power. Typical auxiliary loads are radiator cooling fans, hydraulic pumps, air compressors and battery charging alternators. For Tier 4 ratings additional Parasitic losses would also include Intake, and Exhaust Restrictions.

**ALTITUDE CAPABILITY**

Altitude capability is the maximum altitude above sea level at standard temperature and standard pressure at which the engine could develop full rated output power on the current performance data set.

Standard temperature values versus altitude could be seen on TM2001.

When viewing the altitude capability chart the ambient temperature is the inlet air temp at the compressor inlet.

Engines with ADEM MEUI and HEUI fuel systems operating at conditions above the defined altitude capability derate for atmospheric pressure and temperature conditions outside the values defined, see TM2001.

Mechanical governor controlled unit injector engines require a setting change for operation at conditions above the altitude defined on the engine performance sheet. See your Caterpillar technical representative for non standard ratings.

**REGULATIONS AND PRODUCT COMPLIANCE**

TMI Emissions information is presented at 'nominal' and 'Potential Site Variation' values for standard ratings. No tolerances are applied to the emissions data. These values are subject to change at any time. The controlling federal and local emission requirements need to be verified by your Caterpillar technical representative.

Customer's may have special emission site requirements that need to be verified by the Caterpillar Product Group engineer.

**EMISSION CYCLE LIMITS:**

Cycle emissions Max Limits apply to cycle-weighted averages only. Emissions at individual load points may exceed the cycle-weighted limit.

**EMISSIONS DEFINITIONS:**

Emissions : DM1176

**EMISSION CYCLE DEFINITIONS**

1. For constant-speed marine engines for ship main propulsion, including,diesel-electric drive, test cycle E2 shall be applied, for controllable-pitch propeller sets test cycle E2 shall be applied.
2. For propeller-law-operated main and propeller-law-operated auxiliary engines the test cycle E3 shall be applied.
3. For constant-speed auxiliary engines test cycle D2 shall be applied.
4. For variable-speed, variable-load auxiliary engines, not included above, test cycle C1 shall be applied.

**HEAT REJECTION DEFINITIONS:**

Diesel Circuit Type and HHV Balance : DM9500

**HIGH DISPLACEMENT (HD) DEFINITIONS:**

3500: EM1500

**RATING DEFINITIONS:**

Agriculture : TM6008

Fire Pump : TM6009

Generator Set : TM6035

Generator (Gas) : TM6041

Industrial Diesel : TM6010

Industrial (Gas) : TM6040

Irrigation : TM5749

Locomotive : TM6037

Marine Auxiliary : TM6036

Marine Prop (Except 3600) : TM5747

Marine Prop (3600 only) : TM5748

MSHA : TM6042

Oil Field (Petroleum) : TM6011

Off-Highway Truck : TM6039

On-Highway Truck : TM6038

**SOUND DEFINITIONS:**

Sound Power : DM8702

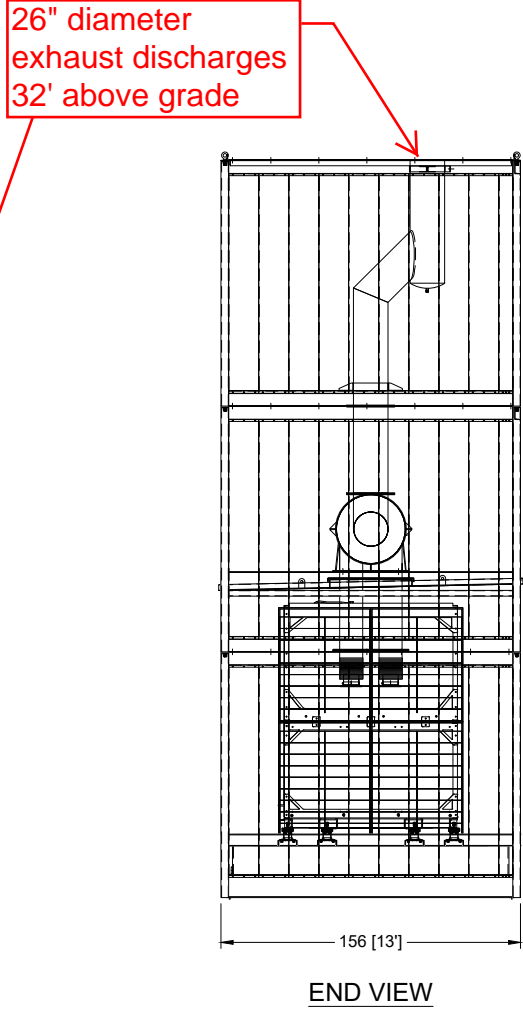
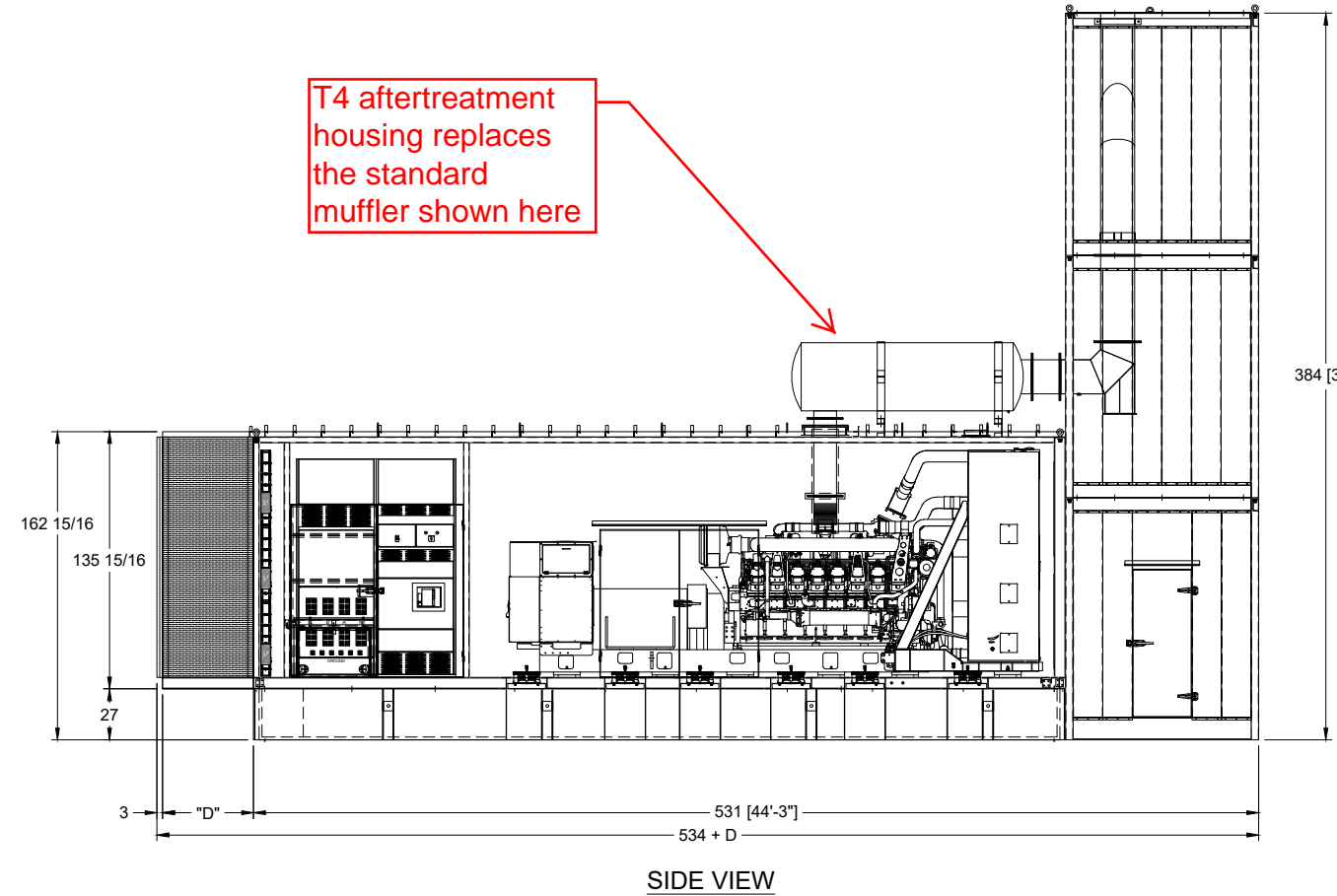
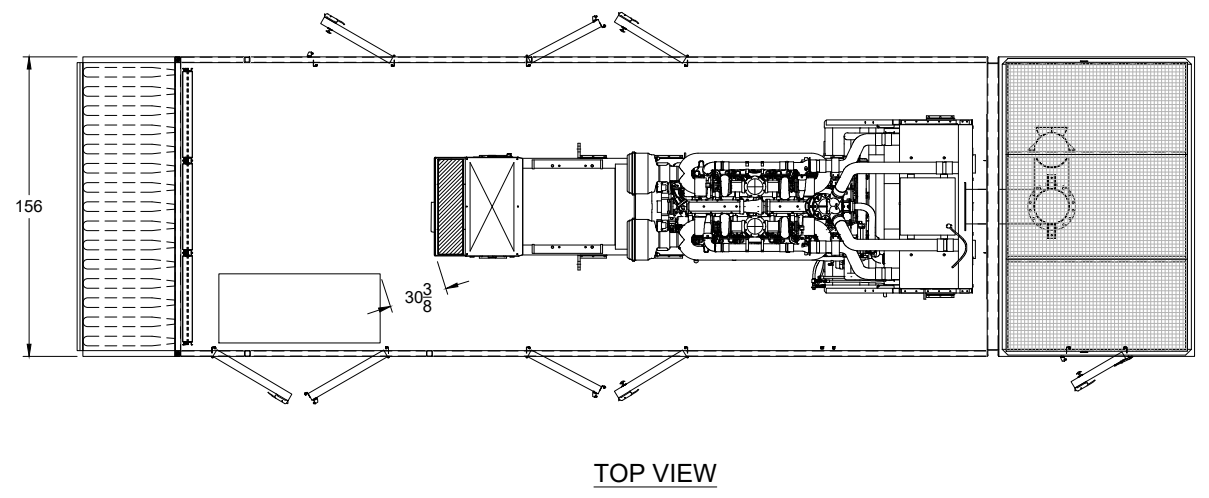
Sound Pressure : TM7080

Date Released : 07/10/19

**REMOVABLE SOUND PLENUM OPTIONS**

D =	Sound option
None	No sound Option
18"	85 dba
30"	75 dba
48"	65 dba

APP BY:	DATE:								
SC	01-19-21								
REV:	DESCRIPTION:								
CO	ISSUED FOR CONCEPTUAL								
BY:	DATE:								
SC	01-19-21								



**ISSUED FOR CONCEPTUAL**  
THE INFORMATION ON THIS DOCUMENT IS INTENDED ONLY AS CONCEPTUAL INFORMATION. THIS IS NOT INTENDED AS A SUBMITTAL FOR CONSTRUCTION PURPOSES.

**PROPRIETARY NOTICE**  
THIS DRAWING CONTAINS DESIGNS AND OTHER INFORMATION WHICH ARE THE PROPERTY OF JTS, LLC. EXCEPT FOR THE RIGHTS GRANTED EXPRESSLY BY CONTRACT, THIS DRAWING MAY NOT BE DISCLOSED OR DUPLICATED IN WHOLE OR IN PART OR USED FOR MANUFACTURE OF DESIGNS DISCLOSED HEREIN WITHOUT THE PRIOR WRITTEN PERMISSION OF JTS, LLC.

UNLESS OTHERWISE SPECIFIED ALL DIMENSIONS ARE IN INCHES  
**DO NOT SCALE**

DRAWN BY:	DATE:
SC	01-09-21
CHECKED BY:	DATE:
SC	01-09-21
APPROVED BY:	DATE:
SC	01-09-21

PROJECT NAME:  
**OPTDC ONE DESIGN**

PROJECT LOCATION:  
---

CLIENT NAME:  
---

QUOTE NUMBER:  
**Q-2948-1**

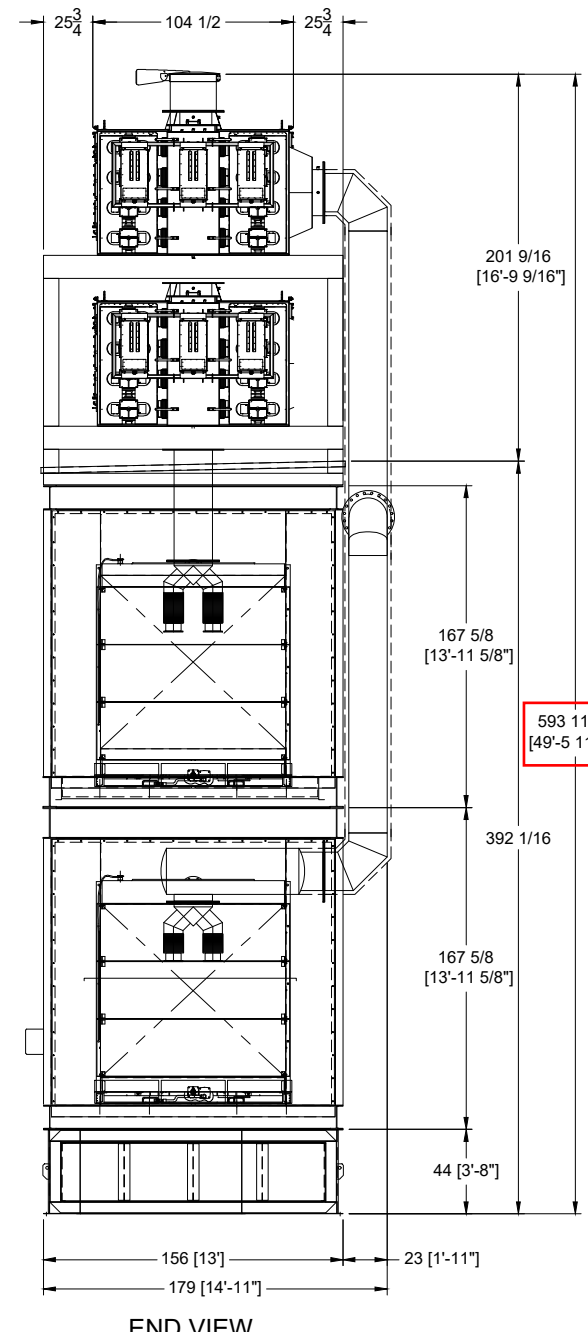
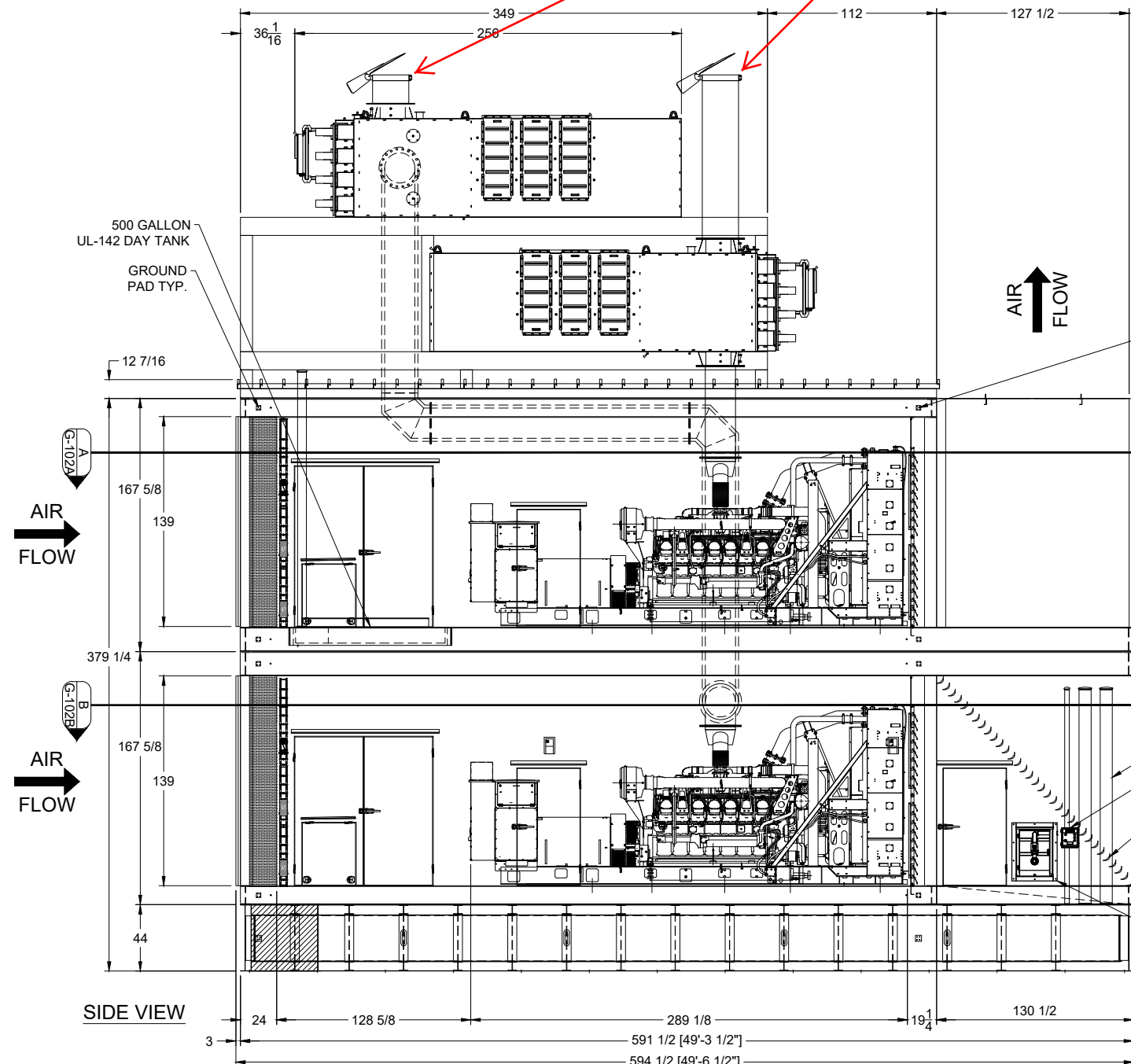
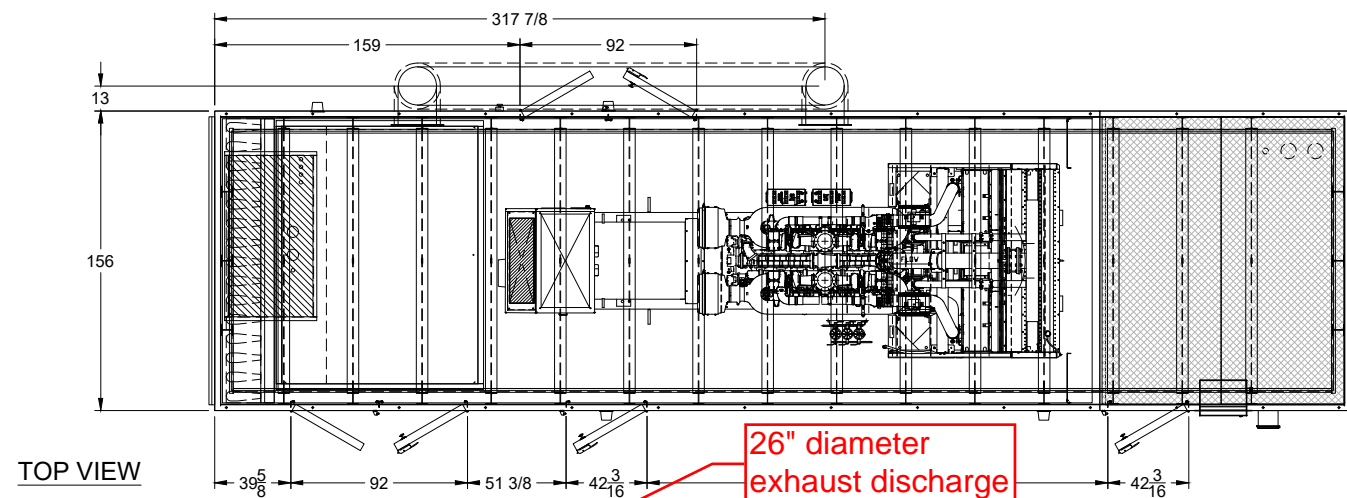
CUSTOMER PO NUMBER:  
---

JOB NUMBER:  
---

DRAWING DESCRIPTION:  
**GENERAL ASSEMBLY**

DRAWING NO:	REV:
<b>G-101A</b>	<b>CO</b>

WEIGHTS OF COMPONENTS	
DESCRIPTION	WEIGHT (LBS)
10K UL-2085 SUB-BASE TANK (DRY)	85,000
LOWER ENCLOSURE W/ GEN	90,000
UPPER ENCLOSURE W/ GEN & 500 GALLON UL-142 DAY TANK	85,000
ROOF SCR LOWER UNIT	16,080
ROOF SCR UPPER UNIT	16,080
ROOF SCR SUPPORT STRUCTURE	10,000
800 GALLON DEF TANK	2,000
<b>TOTAL DRY WEIGHT</b>	<b>304,160 LBS</b>
10K GALLONS DIESEL @ 7.2lbs / Gal	72,000
500 GALLON DAYTANK DIESEL @ 7.2lbs / Gal	3,600
800 GALLONS DEF FLUID @ 9lbs / Gal	7,200
<b>TOTAL WET WEIGHT</b>	<b>386,960 LBS</b>



**ISSUED FOR CONCEPTUAL**

THE INFORMATION ON THIS DOCUMENT IS INTENDED ONLY AS CONCEPTUAL INFORMATION. THIS IS NOT INTENDED AS A SUBMITTAL FOR CONSTRUCTION PURPOSES.

**PROPRIETARY NOTICE**

THIS DRAWING CONTAINS DESIGNS AND OTHER INFORMATION WHICH ARE THE PROPERTY OF JTS, LLC. EXCEPT FOR THE RIGHTS GRANTED EXPRESSLY BY CONTRACT, THIS DRAWING MAY NOT BE DISCLOSED OR DUPLICATED IN WHOLE OR IN PART OR USED FOR MANUFACTURE OF DESIGNS DISCLOSED HEREIN WITHOUT THE PRIOR WRITTEN PERMISSION OF JTS, LLC.

UNLESS OTHERWISE SPECIFIED ALL DIMENSIONS ARE IN INCHES **DO NOT SCALE**

DRAWN BY: SC	DATE: 01-11-21
CHECKED BY: SC	DATE: 01-11-21
APPROVED BY: JT	DATE: 01-11-21

PROJECT NAME: SFO60 DOUBLE STACK
PROJECT LOCATION: ---
CLIENT NAME: PETERSON POWER
QUOTE NUMBER: Q-2810-4
CUSTOMER PO NUMBER: ---
JOB NUMBER: ---
DRAWING DESCRIPTION: GENERAL ASSEMBLY
DRAWING NO: G-102
REV: CO
SHEET 1 OF 3

DATE:	
APP BY:	
DESCRIPTION:	
BY:	
DATE:	
REV:	

**ISSUED FOR CONCEPTUAL**  
THE INFORMATION ON THIS DOCUMENT IS INTENDED ONLY AS CONCEPTUAL INFORMATION. THIS IS NOT INTENDED AS A SUBMITTAL FOR CONSTRUCTION PURPOSES.

**PROPRIETARY NOTICE**  
THIS DRAWING CONTAINS DESIGNS AND OTHER INFORMATION WHICH ARE THE PROPERTY OF JTS, LLC. EXCEPT FOR THE RIGHTS GRANTED EXPRESSLY BY CONTRACT, THIS DRAWING MAY NOT BE DISCLOSED OR DUPLICATED IN WHOLE OR IN PART OR USED FOR MANUFACTURE OF DESIGNS DISCLOSED HEREIN WITHOUT THE PRIOR WRITTEN PERMISSION OF JTS, LLC.

UNLESS OTHERWISE SPECIFIED  
ALL DIMENSIONS ARE IN INCHES  
**DO NOT SCALE**

DRAWN BY:	DP	DATE:	12-17-18
CHECKED BY:	SC	DATE:	12-17-18
APPROVED BY:	JT	DATE:	12-17-18

PROJECT NAME:  
**SFO60  
DOUBLE STACK**

PROJECT LOCATION:  
---

CLIENT NAME:  
**PETERSON POWER**

QUOTE NUMBER:  
**Q-2810-4**

CUSTOMER PO NUMBER:  
---

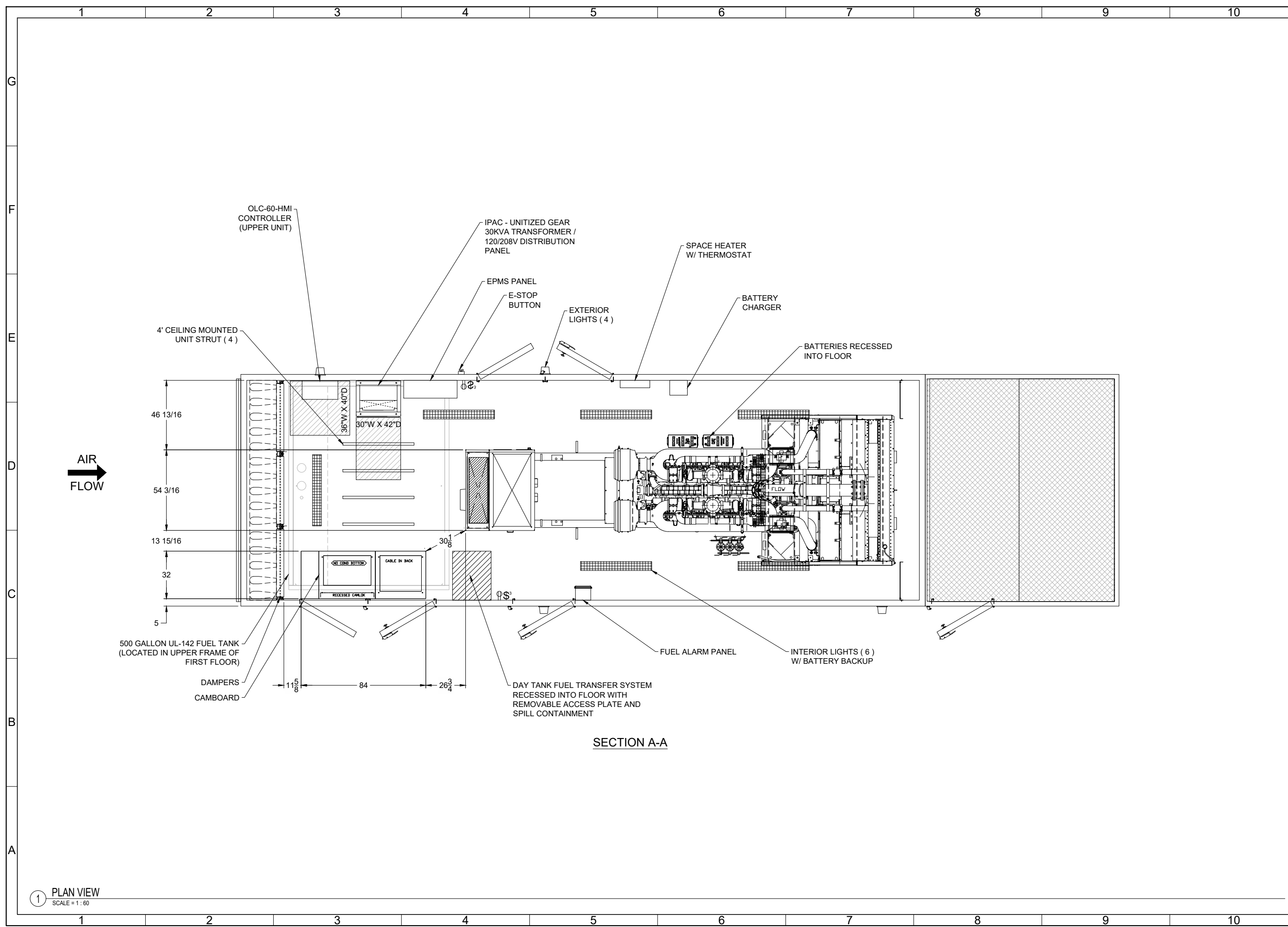
JOB NUMBER:  
---

DRAWING DESCRIPTION:  
**SECOND FLOOR PLAN  
VIEW**

DRAWING NO:  
**G-102A**

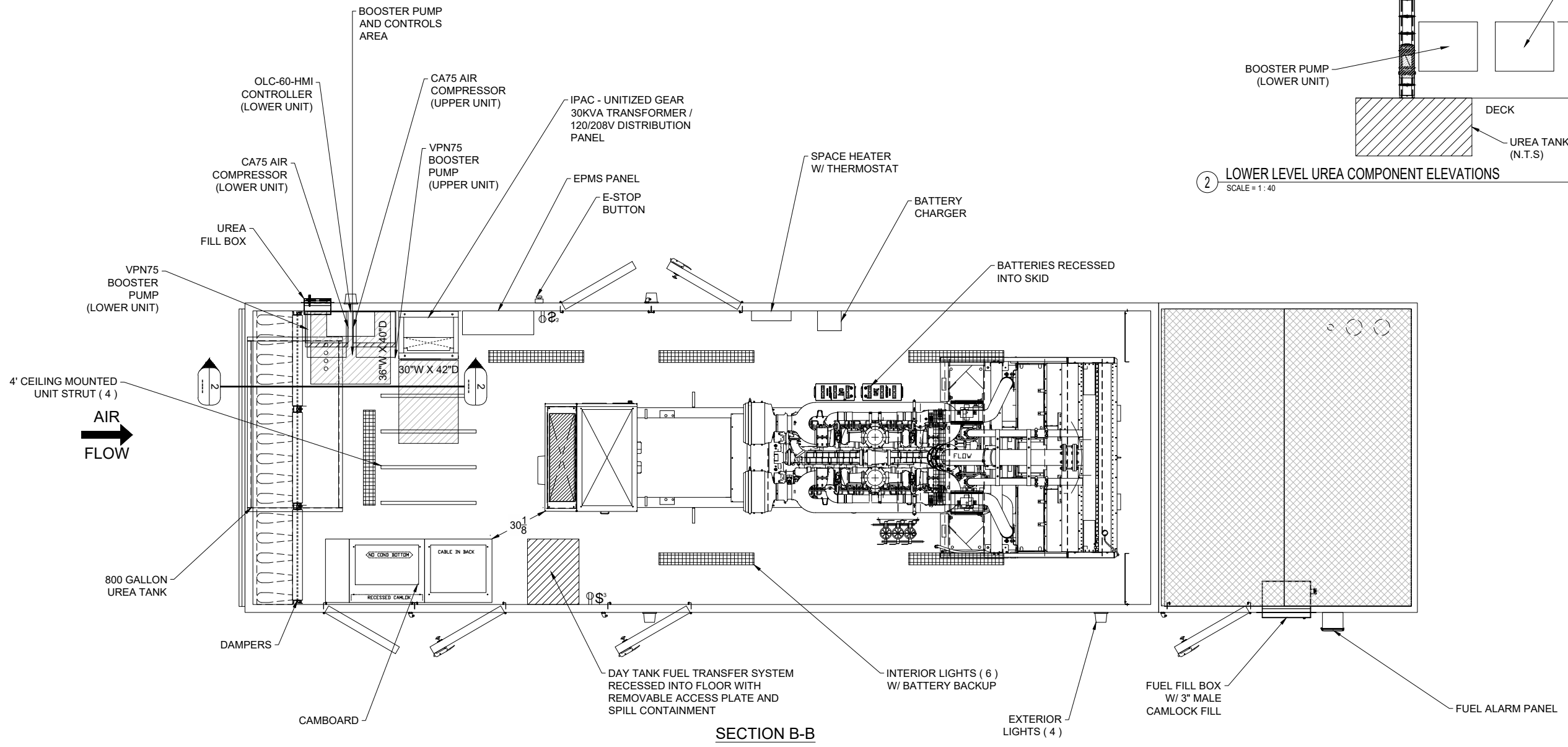
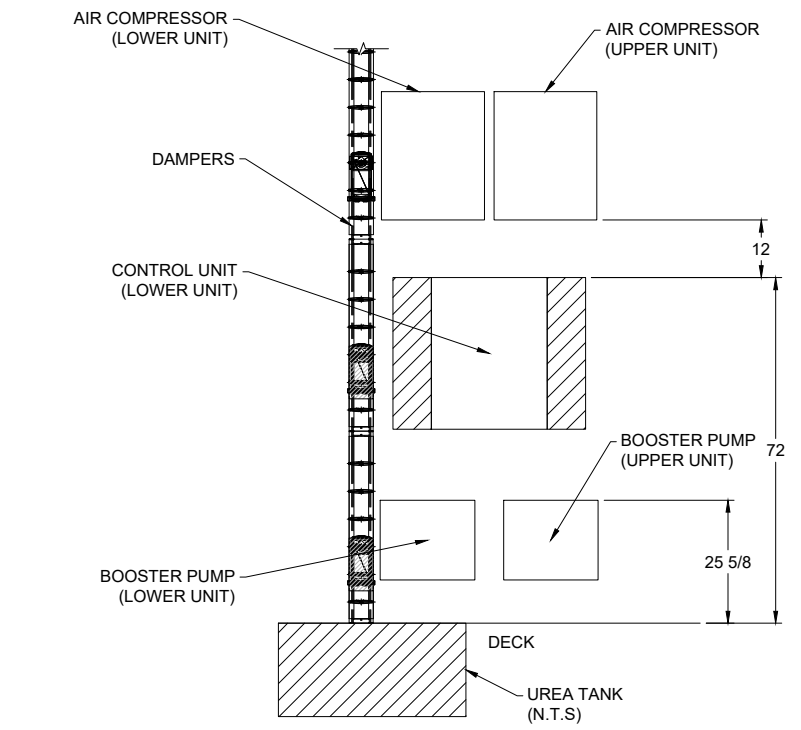
REV:  
**CO**

SHEET 2 OF 3



1 PLAN VIEW  
SCALE = 1 : 60

DATE:	
APP BY:	
DESCRIPTION:	
BY:	
DATE:	
REV:	



SECTION B-B

**ISSUED FOR CONCEPTUAL**  
THE INFORMATION ON THIS DOCUMENT IS INTENDED ONLY AS CONCEPTUAL INFORMATION. THIS IS NOT INTENDED AS A SUBMITTAL FOR CONSTRUCTION PURPOSES.

**PROPRIETARY NOTICE**  
THIS DRAWING CONTAINS DESIGNS AND OTHER INFORMATION WHICH ARE THE PROPERTY OF JTS, LLC. EXCEPT FOR THE RIGHTS GRANTED EXPRESSLY BY CONTRACT, THIS DRAWING MAY NOT BE DISCLOSED OR DUPLICATED IN WHOLE OR IN PART OR USED FOR MANUFACTURE OF DESIGNS DISCLOSED HEREIN WITHOUT THE PRIOR WRITTEN PERMISSION OF JTS, LLC.

UNLESS OTHERWISE SPECIFIED ALL DIMENSIONS ARE IN INCHES  
**DO NOT SCALE**

DRAWN BY:	DP	DATE:	12-17-18
CHECKED BY:	SC	DATE:	12-17-18
APPROVED BY:	JT	DATE:	12-17-18

PROJECT NAME:  
**SFO60 DOUBLE STACK**

PROJECT LOCATION:  
---

CLIENT NAME:  
**PETERSON POWER**

QUOTE NUMBER:  
**Q-2810-4**

CUSTOMER PO NUMBER:  
---

JOB NUMBER:  
---

DRAWING DESCRIPTION:  
**FIRST FLOOR PLAN VIEW**

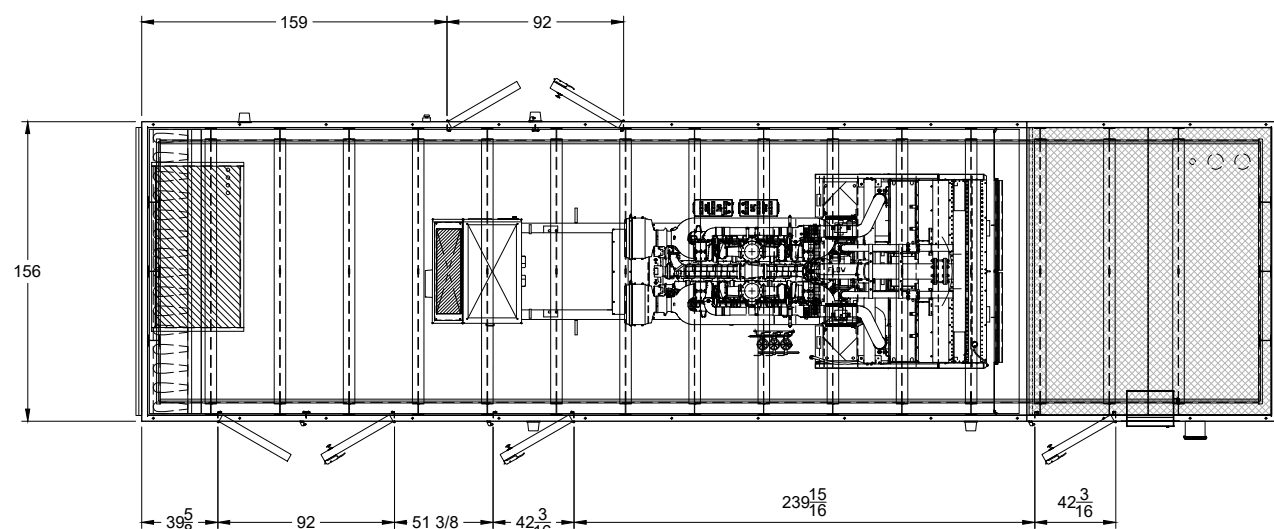
DRAWING NO:  
**G-102B**

REV: **CO**

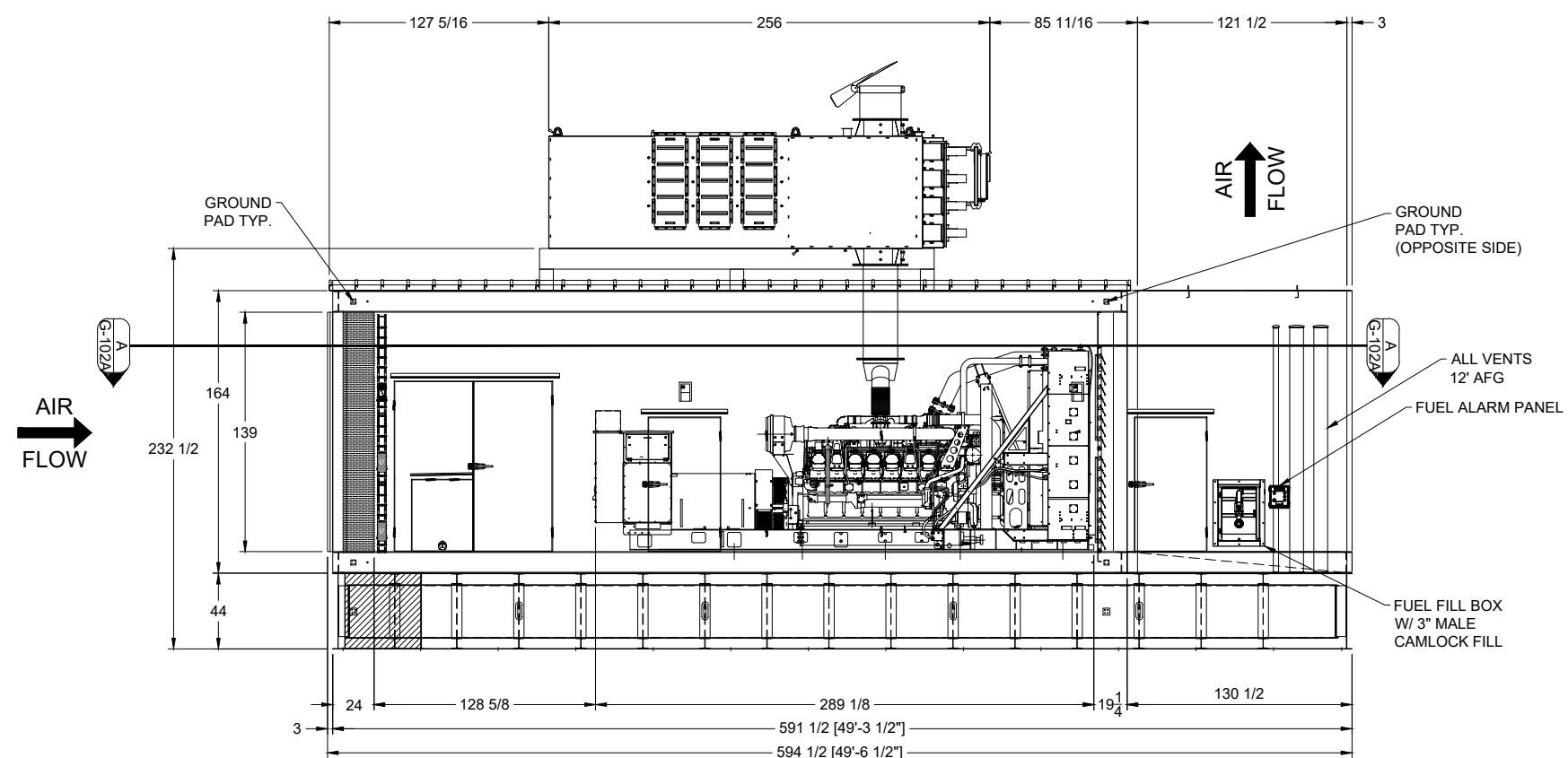
SHEET 3 OF 3



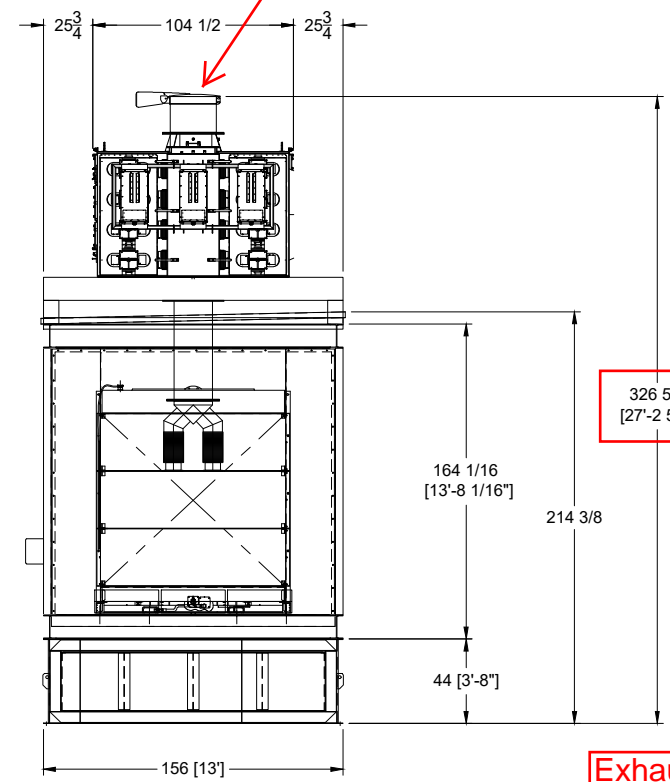
WEIGHTS OF COMPONENTS	
DESCRIPTION	WEIGHT (LBS)
5K UL-2085 SUB-BASE TANK (DRY)	73,400
ENCLOSURE W/ GEN	90,000
ROOF SCR UPPER UNIT	16,080
ROOF SCR SUPPORT STRUCTURE	3,500
350 GALLON DEF TANK	1,500
<b>TOTAL DRY WEIGHT</b>	<b>184,480 LBS</b>
5K GALLONS DIESEL @ 7.2lbs / Gal	36,000
350 GALLONS DEF FLUID @ 9lbs / Gal	3,150
<b>TOTAL WET WEIGHT</b>	<b>223,630 LBS</b>



TOP VIEW



SIDE VIEW



END VIEW

**ISSUED FOR CONCEPTUAL**  
 THE INFORMATION ON THIS DOCUMENT IS INTENDED ONLY AS CONCEPTUAL INFORMATION. THIS IS NOT INTENDED AS A SUBMITTAL FOR CONSTRUCTION PURPOSES.

**PROPRIETARY NOTICE**  
 THIS DRAWING CONTAINS DESIGNS AND OTHER INFORMATION WHICH ARE THE PROPERTY OF JTS, LLC. EXCEPT FOR THE RIGHTS GRANTED EXPRESSLY BY CONTRACT, THIS DRAWING MAY NOT BE DISCLOSED OR DUPLICATED IN WHOLE OR IN PART OR USED FOR MANUFACTURE OF DESIGNS DISCLOSED HEREIN WITHOUT THE PRIOR WRITTEN PERMISSION OF JTS, LLC.

UNLESS OTHERWISE SPECIFIED ALL DIMENSIONS ARE IN INCHES  
**DO NOT SCALE**

DRAWN BY: SC	DATE: 01-22-21
CHECKED BY: SC	DATE: 01-22-21
APPROVED BY: JT	DATE: 01-22-21

PROJECT NAME:  
**SFO60 SINGLE STACK**

PROJECT LOCATION:  
 ---

CLIENT NAME:  
**PETERSON POWER**

OTE NUMBER:  
**Q-2823-3**

STOMER PO NUMBER:  
 ---

JOB NUMBER:  
 ---

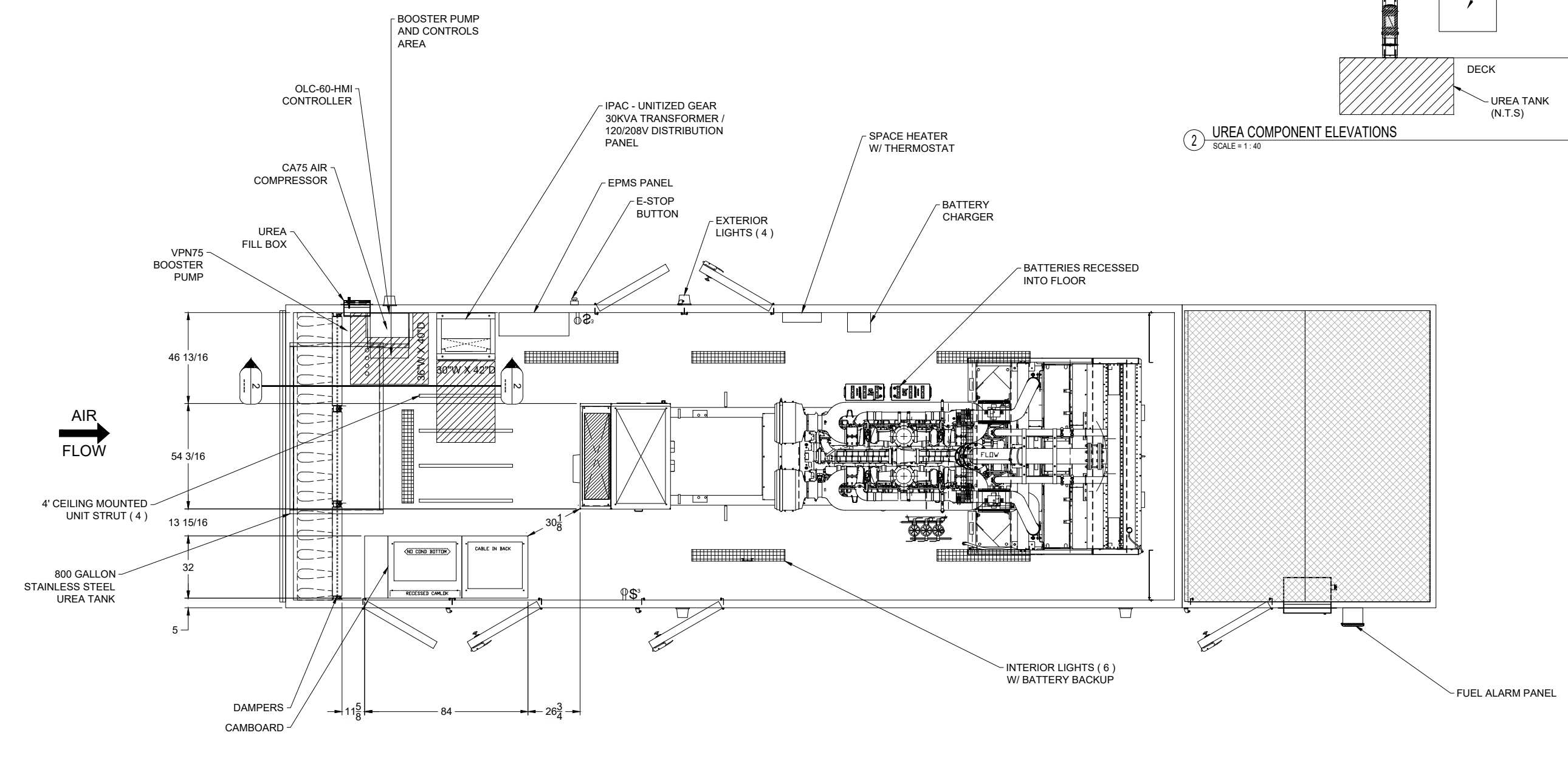
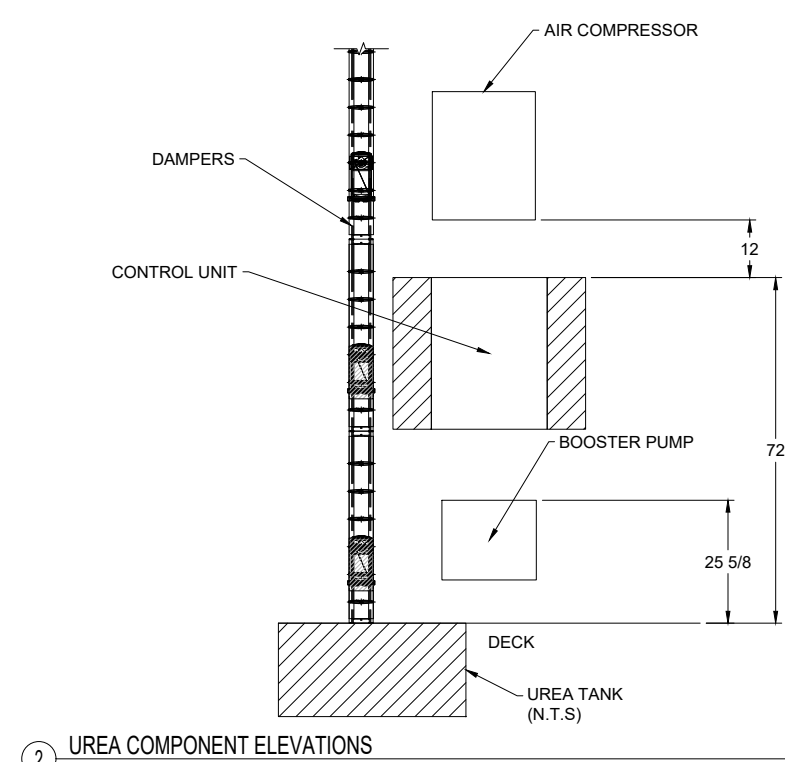
DRAWING DESCRIPTION:  
**GENERAL ASSEMBLY**

DRAWING NO:  
**G-102**

REV:  
**CO**

SHEET 1 OF 2

DATE:	
APP BY:	
DESCRIPTION:	
BY:	
DATE:	
REV:	



① PLAN VIEW  
SCALE = 1 : 60

SECTION A-A

**ISSUED FOR CONCEPTUAL**  
THE INFORMATION ON THIS DOCUMENT IS INTENDED ONLY AS CONCEPTUAL INFORMATION. THIS IS NOT INTENDED AS A SUBMITTAL FOR CONSTRUCTION PURPOSES.

**PROPRIETARY NOTICE**  
THIS DRAWING CONTAINS DESIGNS AND OTHER INFORMATION WHICH ARE THE PROPERTY OF JTS, LLC. EXCEPT FOR THE RIGHTS GRANTED EXPRESSLY BY CONTRACT, THIS DRAWING MAY NOT BE DISCLOSED OR REPRODUCED IN WHOLE OR IN PART OR USED FOR THE MANUFACTURE OF DESIGNS DISCLOSED HEREIN WITHOUT THE PRIOR WRITTEN PERMISSION OF JTS, LLC.

UNLESS OTHERWISE SPECIFIED  
ALL DIMENSIONS ARE IN INCHES  
**DO NOT SCALE**

DRAWN BY:	DP	DATE:	01-22-21
CHECKED BY:	SC	DATE:	01-22-21
APPROVED BY:	JT	DATE:	01-22-21

PROJECT NAME:  
**SFO60  
SINGLE STACK**

PROJECT LOCATION:  
---

CLIENT NAME:  
**PETERSON POWER**

QUOTE NUMBER:  
**Q-2823-3**

CUSTOMER PO NUMBER:  
---

JOB NUMBER:  
---

DRAWING DESCRIPTION:  
**PLAN VIEW**

DRAWING NO:  
**G-102A**

### Standby & Prime: 60Hz



Image shown might not reflect actual configuration

Engine Model	Cat® C18 ACERT™ In-line 6, 4-cycle diesel
Bore x Stroke	145mm x 183mm (5.7in x 7.2in)
Displacement	18.1 L (1106 in³)
Compression Ratio	14.5:1
Aspiration	Turbocharged Air-to-Air Aftercooled
Fuel Injection System	MEUI
Governor	Electronic ADEM™ A4

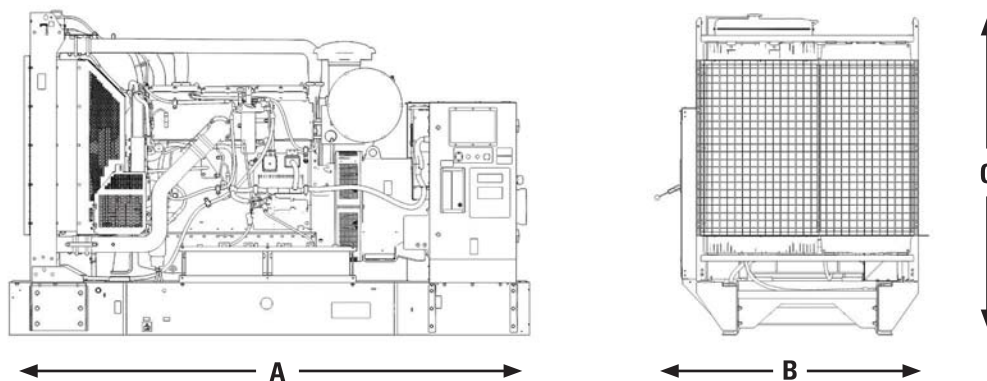
Model	Standby	Prime	Emission Strategy
<b>C18</b>	<b>600 ekW, 750 kVA</b>	<b>545 ekW, 681 kVA</b>	<b>TIER II Non-Road</b>

### PACKAGE PERFORMANCE

Performance	Standby	Prime
Frequency	60 Hz	
Genset Power Rating	750 kVA	681 kVA
Genset power rating with fan @ 0.8 power factor	600 ekW	545 ekW
Emissions	TIER II Non-Road	
Performance Number	DM8518-04	DM8522-05
<b>Fuel Consumption</b>		
100% load with fan, L/hr (gal/hr)	161.6 (42.7)	151.1 (39.9)
75% load with fan, L/hr (gal/hr)	129.6 (34.2)	123.6 (32.6)
50% load with fan, L/hr (gal/hr)	91.7 (24.2)	89.2 (23.6)
25% load with fan, L/hr (gal/hr)	46.8 (12.4)	48.7 (12.9)
<b>Cooling System<sup>1</sup></b>		
Radiator air flow restriction (system), kPa (in. Water)	0.12 (0.48)	0.12 (0.48)
Radiator air flow, m³/min (cfm)	803 (28357)	803 (28357)
Engine coolant capacity, L (gal)	20.8 (5.5)	20.8 (5.5)
Radiator coolant capacity, L (gal)	61 (16)	61 (16)
Total coolant capacity, L (gal)	82 (22)	82 (22)
<b>Inlet Air</b>		
Combustion air inlet flow rate, m³/min (cfm)	47.8 (1687.8)	46.7 (1649.0)
Max. Allowable Combustion Air Inlet Temp, °C (°F)	49 (120)	49 (120)
<b>Exhaust System</b>		
Exhaust stack gas temperature, °C (°F)	534.6 (994.3)	518.2 (964.8)
Exhaust gas flow rate, m³/min (cfm)	135.5 (4784.4)	129.6 (4576.4)
Exhaust system backpressure (maximum allowable) kPa (in. water)	10.0 (40.0)	10.0 (40.0)
<b>Heat Rejection</b>		
Heat rejection to jacket water, kW (Btu/min)	189 (10747)	175 (9953)
Heat rejection to exhaust (total) kW (Btu/min)	634 (36053)	596 (33895)
Heat rejection to aftercooler, kW (Btu/min)	153 (8700)	142 (8076)
Heat rejection to atmosphere from engine, kW (Btu/min)	86 (4902)	83 (4726)

Emissions (Nominal) <sup>2</sup>	Standby		Prime	
NOx, mg/Nm <sup>3</sup> (g/hp-hr)	2798.7 (5.8)		2462.2 (5.1)	
CO, mg/Nm <sup>3</sup> (g/hp-hr)	225.2 (0.5)		195.1 (0.4)	
HC, mg/Nm <sup>3</sup> (g/hp-hr)	3.8 (0.01)		5.0 (0.01)	
PM, mg/Nm <sup>3</sup> (g/hp-hr)	13.3 (0.03)		13.1 (0.03)	
Alternator <sup>3</sup>				
Voltages	480V	600V	480V	600V
Motor starting capability @ 30% Voltage Dip	1633 skVA	2023 skVA	1633 skVA	2023 skVA
Current	902 amps	722 amps	819 amps	656 amps
Frame Size	LC7024F	LC7024H	LC7024F	LC7024H
Excitation	AR	AR	AR	AR
Temperature Rise	150 ° C	130 ° C	125 ° C	105 ° C

## WEIGHTS & DIMENSIONS



Dim "A" mm (in)	Dim "B" mm (in)	Dim "C" mm (in)	Dry Weight kg (lb)
3477 (137)	1628 (64)	2102 (83)	4431 (9769)

### APPLICABLE CODES AND STANDARDS:

AS1359, CSA C22.2 No100-04, UL142, UL489, UL869, UL2200, NFPA37, NFPA70, NFPA99, NFPA110, IBC, IEC60034-1, ISO3046, ISO8528, NEMA MG1-22, NEMA MG1-33, 2006/95/EC, 2006/42/EC, 2004/108/EC.

Note: Codes may not be available in all model configurations. Please consult your local Cat Dealer representative for availability.

**STANDBY:** Output available with varying load for the duration of the interruption of the normal source power. Average power output is 70% of the standby power rating. Typical operation is 200 hours per year, with maximum expected usage of 500 hours per year.

**PRIME:** Output available with varying load for an unlimited time. Average power output is 70% of the prime power rating. Typical peak demand is 100% of prime rated kW with 10% overload capability for emergency use for a maximum of 1 hour in 12. Overload operation cannot exceed 25 hours per year

**RATINGS:** Ratings are based on SAE J1349 standard conditions. These ratings also apply at ISO3046 standard conditions.

### DEFINITIONS AND CONDITIONS

<sup>1</sup> For ambient and altitude capabilities consult your Cat dealer. Air flow restriction (system) is added to existing restriction from factory.

<sup>2</sup> Emissions data measurement procedures are consistent with those described in EPA CFR 40 Part 89, Subpart D & E and ISO8178-1 for measuring HC, CO, PM, NOx. Data shown is based on steady state operating conditions of 77° F, 28.42 in HG and number 2 diesel fuel with 35° API and LHV of 18,390 BTU/lb. The nominal emissions data shown is subject to instrumentation, measurement, facility and engine to engine variations. Emissions data is based on 100% load and thus cannot be used to compare to EPA regulations which use values based on a weighted cycle.

<sup>3</sup> UL 2200 Listed packages may have oversized generators with a different temperature rise and motor starting characteristics. Generator temperature rise is based on a 40° C ambient per NEMA MG1-32.

**LET'S DO THE WORK.™**



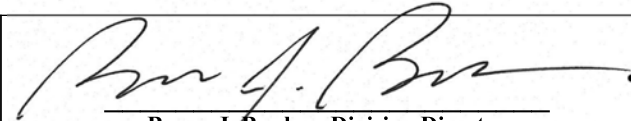
**UNITED STATES ENVIRONMENTAL PROTECTION AGENCY  
2020 MODEL YEAR  
CERTIFICATE OF CONFORMITY  
WITH THE CLEAN AIR ACT**

**OFFICE OF TRANSPORTATION  
AND AIR QUALITY  
ANN ARBOR, MICHIGAN 48105**

**Certificate Issued To:** Caterpillar Inc.  
(U.S. Manufacturer or Importer)  
**Certificate Number:** LCPXL18.1NYS-019

**Effective Date:**  
07/25/2019

**Expiration Date:**  
12/31/2020

  
Byron J. Bunker, Division Director  
Compliance Division

**Issue Date:**  
07/25/2019

**Revision Date:**  
N/A

**Model Year:** 2020  
**Manufacturer Type:** Original Engine Manufacturer  
**Engine Family:** LCPXL18.1NYS

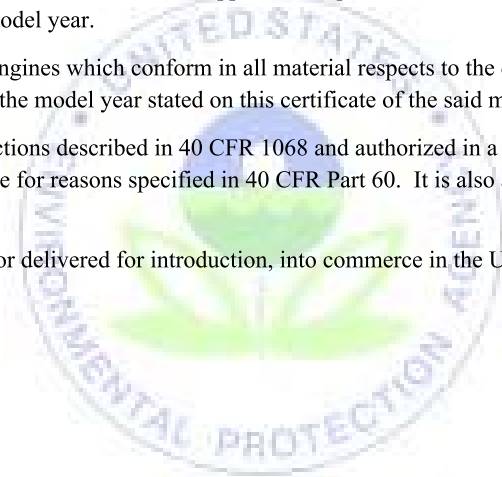
**Mobile/Stationary Indicator:** Stationary  
**Emissions Power Category:** 560<kW<=2237  
**Fuel Type:** Diesel  
**After Treatment Devices:** No After Treatment Devices Installed  
**Non-after Treatment Devices:** Electronic Control, Engine Design Modification

Pursuant to Section 111 and Section 213 of the Clean Air Act (42 U.S.C. sections 7411 and 7547) and 40 CFR Part 60, and subject to the terms and conditions prescribed in those provisions, this certificate of conformity is hereby issued with respect to the test engines which have been found to conform to applicable requirements and which represent the following engines, by engine family, more fully described in the documentation required by 40 CFR Part 60 and produced in the stated model year.

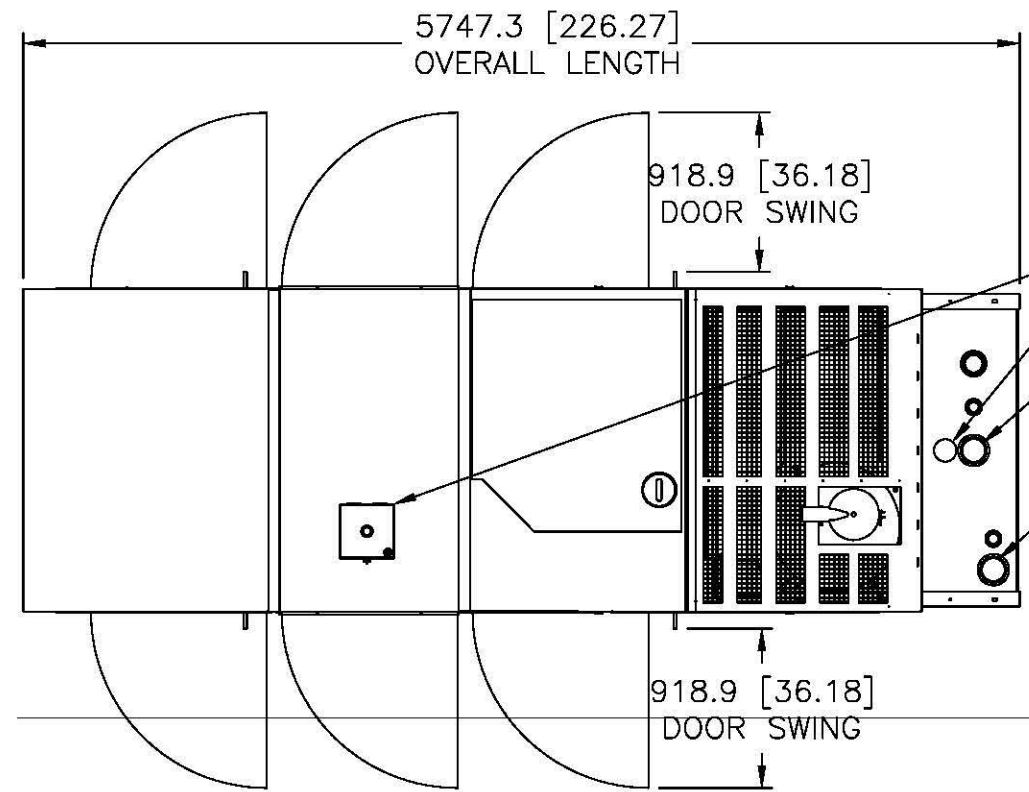
This certificate of conformity covers only those new compression-ignition engines which conform in all material respects to the design specifications that applied to those engines described in the documentation required by 40 CFR Part 60 and which are produced during the model year stated on this certificate of the said manufacturer, as defined in 40 CFR Part 60.

It is a term of this certificate that the manufacturer shall consent to all inspections described in 40 CFR 1068 and authorized in a warrant or court order. Failure to comply with the requirements of such a warrant or court order may lead to revocation or suspension of this certificate for reasons specified in 40 CFR Part 60. It is also a term of this certificate that this certificate may be revoked or suspended or rendered void *ab initio* for other reasons specified in 40 CFR Part 60.

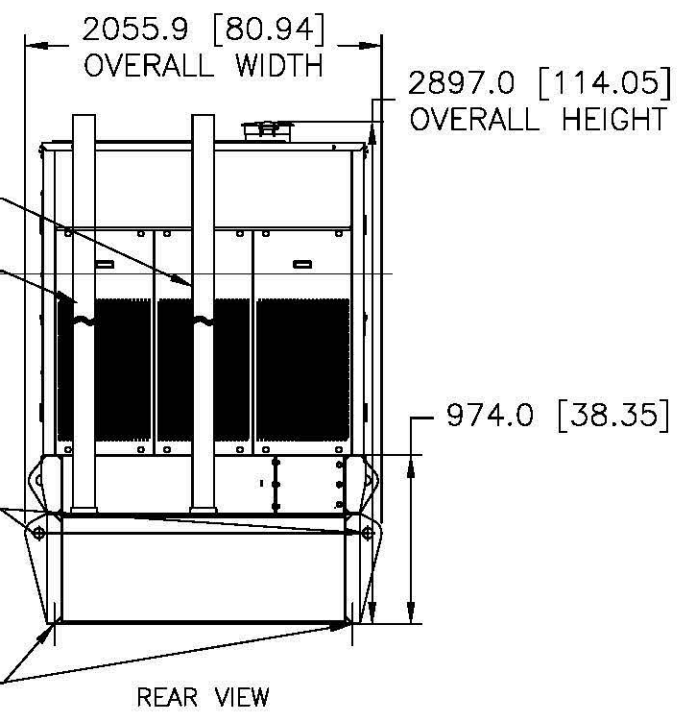
This certificate does not cover engines sold, offered for sale, or introduced, or delivered for introduction, into commerce in the U.S. prior to the effective date of the certificate.







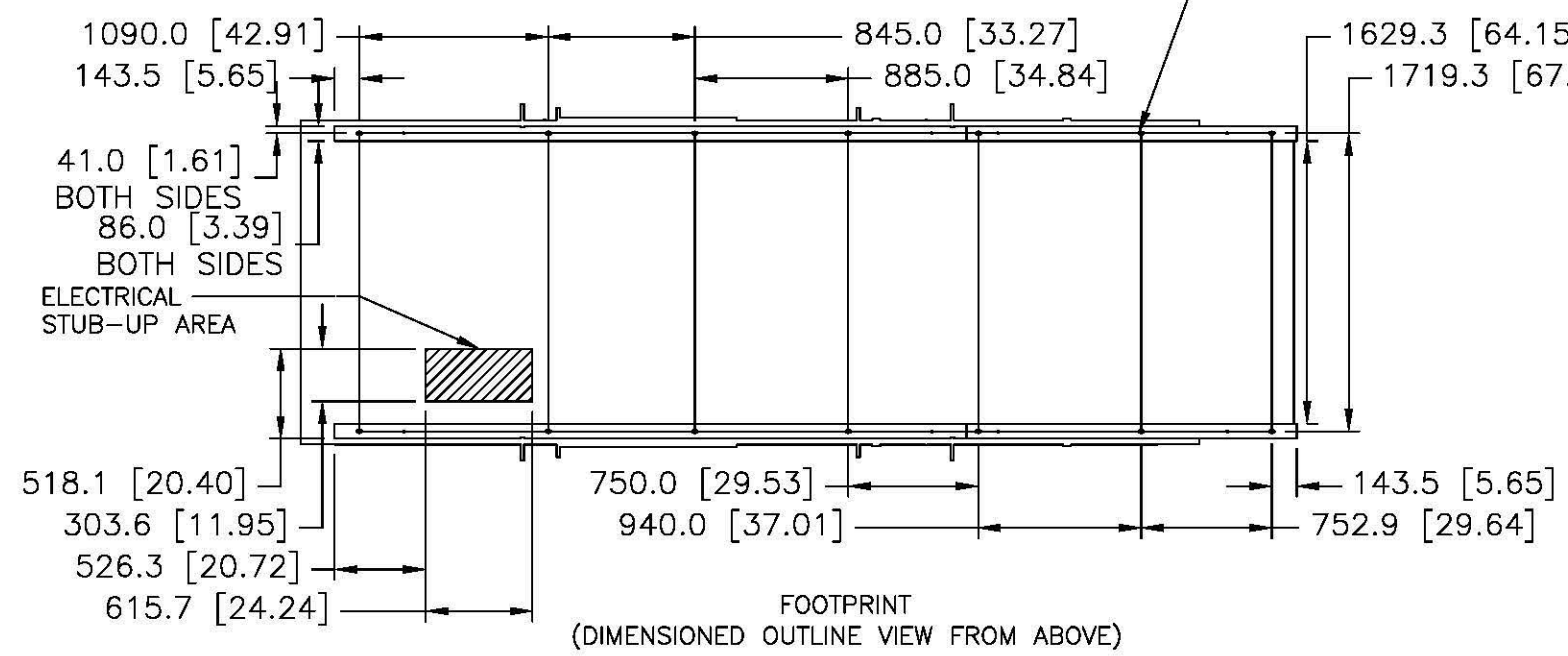
- 5-GALLON SPILL BUCKET W/OPV
- 2.5" NORMAL VENT  
NPTF THD EXTENDED 12-FT ABOVE GRADE
- 5" MAIN TANK EMERGENCY VENT  
NPTF THD EXTENDED 12-FT ABOVE GRADE
- 5" BASIN TANK EMERGENCY VENT  
NPTF THD EXTENDED 12-FT ABOVE GRADE



- 5" MAIN TANK EMERGENCY VENT  
NPTF THD EXTENDED 12-FT ABOVE GRADE
- 5" BASIN TANK EMERGENCY VENT  
NPTF THD EXTENDED 12-FT ABOVE GRADE

TOP VIEW

CUSTOMER MOUNTING HOLES  
17.5 [0.69] X 32.0 [1.26]  
7 SLOTS EACH SIDE



FOOTPRINT  
(DIMENSIONED OUTLINE VIEW FROM ABOVE)

PROJECT NAME:  
**PDX OPTDC MASTER HOUSE GEN.**

DESCRIPTION: C18-600KW 480VAC 60HZ S.A. L1 ENCLOSURE, S.B. FUEL TANK	REFERENCE DRAWINGS: C18DE6E: C18-600KW 480VAC GENSET FTDW005: SUB-BASE FUEL TANK (1,041 GAL) OGNAR66: LC7024J AREP ALT. END ENCSAH3: S.A. ENCLOSURE L1
--	--

DRAWING STATUS:  
**PRELIMINARY NOT FOR CONSTRUCTION**

DRAWN BY: EJD	PROJECT NUMBER: N/A
CHECKED BY:	DATE: 06-19-20
APPROVED BY:	REV #: -
OVERALL LENGTH: 227"	WET WEIGHT: 26,300 LBS
OVERALL WIDTH: 81"	DRY WEIGHT: 18,000 LBS
OVERALL HEIGHT: 115"	SCALE: NONE

NOTES:  
-ALL OVERALL DIMENSIONS ARE NOMINAL WITH  $\pm 1"$  TOLERANCE SEE DRAWING FOR ALL DETAILED COMPONENT DIMENSIONS CONSULT FACTORY FOR QUESTIONS AND/OR DISCREPANCIES FOUND  
-ALL MEASUREMENTS ARE DISPLAYED IN INCHES  
-CENTER OF GRAVITY IS FOR WET WEIGHT

DRAWING NUMBER:  
C18-0600-S-102CW-01

SHEET NUMBER: Page 62 of 206

DATE

DESCRIPTION

REV BY



## 125 ekW- 200 ekW

60 Hz

	Standby	Prime
	125 ekW	114 ekW
	150 ekW	135 ekW
	175 ekW	158 ekW
	200 ekW	-

### BENEFITS & FEATURES

#### CAT<sup>®</sup> GENERATOR SET PACKAGE

Cat generator set packages have been fully prototype tested and certified torsional vibration analysis reports are available. The packages are designed to meet the NFPA 110 requirement for loading, conform to the ISO 8528-5 steady state and fill transient response requirements.

#### CAT DIESEL ENGINES

The four-cycle Cat diesel engine combines consistent performance with excellent fuel economy and transient response that meets or exceeds ISO 8528-5. The engines feature a reliable, rugged, and durable design that has been field proven in thousands of applications worldwide in emergency standby installations.

#### COOLING SYSTEM

The cooling system has been designed and tested to ensure proper generator set cooling, and includes the radiator, fan, belts, and all guarding installed as standard. Contact your Cat dealer for specific ambient and altitude capabilities.

#### GENERATORS

The generators used on Cat packages have been designed and tested to work with the Cat engine. The generators are built with robust Class H insulation and provide industry-leading motor starting capability and altitude capabilities.

#### EMCP CONTROL PANELS

The EMCP controller features the reliability and durability you have to come to expect from your Cat equipment. The EMCP 4 is a scalable control platform designed to ensure reliable generator set operation, providing extensive information about power output and engine operation. EMCP 4 systems can be further customized to meet your needs through programming and expansion modules.

### SPECIFICATIONS

#### ENGINE SPECIFICATIONS

Engine Model	Cat <sup>®</sup> C7.1 ACERT In-line 6, 4-cycle diesel
Bore x Stroke	105mm x 127mm (4.1in x 5.0 in)
Displacement	7.01 L (428 in <sup>3</sup> )
Compression Ratio	16.7:1
Aspiration	Turbocharged Air-to-Air-Aftercooled
Fuel Injection System	Electronic, Common Rail
Governor	Electronic ADEM <sup>™</sup> A4
Emission Certifications	US EPA TIER III Non-Road

#### GENERATOR SET SPECIFICATIONS

Alternator Design	Brushless Single Bearing, 4 Pole
Stator	2/3 Pitch
No. of Leads	12
Available Voltage Options	<del>600/480/440/240/220V</del> <b>208/120vAC</b>
Frequency	60Hz
Alternator Voltage	12V
Alternator Insulation & IP	Class H; IP23
Standard Temperature Rise	125/130 Deg C
Available Excitation Options	<del>Self-Excited, ASEP</del> <b>PMG</b>
Voltage Regulation, Steady State +/-	≤1%



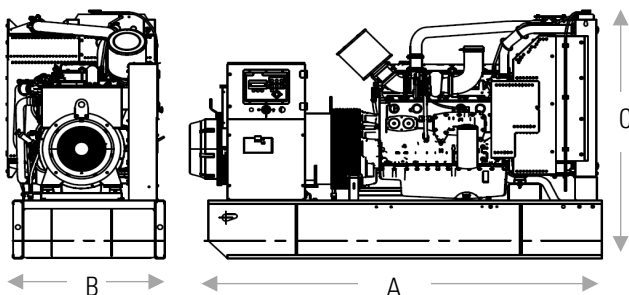
## STANDARD EQUIPMENT

Air inlet system	Aftercooler core. Turbocharger
Control panels	EMCP4.2 control panel.
Cooling system	Radiator and cooling fan complete with protective guards. Standard ambient temperatures up to 50degC (122degF). 50% coolant antifreeze/corrosion inhibitor. Coolant Reservoir
Fuel system	Primary & secondary fuel filters. Fuel priming pump. Flexible fuel lines.
Generators and generator attachments	Brushless, self-excited 2/3 pitch, random wound. IP23 Protection. Insulation Class H and temperature rise Integrated Voltage Regulator
Governing system	Cat Electronic Governor (ADEM A4).
Protection System	Safety Shutoff – Low Oil Pressure Safety Shutoff – Overspeed Coolant Level Sensor
Starting/charging system	12-Volt Electric Starting Motor Batteries with rack & cables
General	Paint – Caterpillar Yellow except rails and radiators gloss black

## OPTIONAL EQUIPMENT

Air inlet system	Single Element air filter Cartridge type air filter
Exhaust	Industrial, residential, critical mufflers.
Control panels	Remote Annunciators Discrete I/O Module Earth (Ground) Fault Relay
Circuit Breakers	3-Pole 100% Rated – Single & Dual breaker combination. 400a & 250a
Enclosures	Sound Attenuated (SA)- Level 1 & Level 2 Weather Protective Aluminum Enclosure
Cooling system	Radiator Stone guards.
Mufflers	Industrial grade (10 dBA) Residential and Critical grade (25 dBA) & 35 dBA mufflers.
Fuel System	Sub Tank Bases:408 777 Gal
Generators and generator attachments	Excitation – Self Excitation –PMG Oversize
Starting/charging system	Standard Battery Set
Certifications	UL2200 Listed Certification of Compliance – IBC Seismic
General	Docking station for load bank

## WEIGHTS & DIMENSIONS



See enclosure spec sheet

Standby Ratings	Dim "A" mm (in)	Dim "B" mm (in)	Dim "C" mm (in)	Generator Set Weight kg (lb)
125 ekW	3039 (120)	1110 (44)	1476 (58)	1500 (3307)
150 ekW	3039 (120)	1110 (44)	1476 (58)	1500 (3307)
175 ekW	3039 (120)	1110 (44)	1476 (58)	1500 (3307)
200 ekW	3039 (120)	1110 (44)	1476 (58)	1500 (3307)