

<b>DOCKETED</b>	
<b>Docket Number:</b>	19-BSTD-03
<b>Project Title:</b>	2022 Energy Code Pre-Rulemaking
<b>TN #:</b>	235415
<b>Document Title:</b>	Evan Mills, Ph.D. Comments - Need for broader technical and policy analysis before initiating standards proceedings
<b>Description:</b>	N/A
<b>Filer:</b>	System
<b>Organization:</b>	Evan Mills, Ph.D.
<b>Submitter Role:</b>	Other Interested Person
<b>Submission Date:</b>	10/25/2020 10:04:15 PM
<b>Docketed Date:</b>	10/26/2020

*Comment Received From: Evan Mills, Ph.D.  
Submitted On: 10/25/2020  
Docket Number: 19-BSTD-03*

## **Need for broader technical and policy analysis before initiating standards proceedings**

I have spent over 30 years as a California-based researcher in the buildings energy-efficiency field, including as a Senior Scientist at Lawrence Berkeley National Laboratory where I led many projects for the California Energy Commission. Over the past decade, I have published a number of technical and policy analyses concerning the energy use and carbon footprint of indoor cannabis cultivation, and have found it to be a strongly emerging contributor to the state's greenhouse-gas emissions. While I am pleased to see this issue coming onto the California energy agenda (although belatedly), I am dismayed to see the Commission building code proceedings are taking a myopic approach to this without first looking at the broader and more fundamental problems with indoor cultivation. The challenge is certainly compounded by some localities forbidding outdoor cultivation. I have long been a strong advocate of building and equipment standards, but in this case it optimizes the sub-optimal, thus codifying unsustainable practices. Moreover, it does not appear that achieving zero-net energy for these facilities on site is realistic, and nor are there likely to be sufficient centrally located renewable resources to serve this burgeoning segment of demand growth while also serving existing load from other sectors. In sum, I believe the policy environment in California discriminates in favor of indoor cultivators over outdoor cultivators--perhaps due to industry lobbying--and puts the Commission's proceeding squarely in conflict with the state's broader greenhouse-gas emissions-reduction targets. More higher-level analysis should be performed before charging ahead with a standard-setting process.

For an in-depth analysis of these issues, see my recent report (attached and posted at: [https://www.researchgate.net/publication/342364745\\_Energy\\_Use\\_by\\_the\\_Indoor\\_Cannabis\\_Industry\\_Inconvenient\\_Truths\\_for\\_Producers\\_Consumers\\_and\\_Policymakers](https://www.researchgate.net/publication/342364745_Energy_Use_by_the_Indoor_Cannabis_Industry_Inconvenient_Truths_for_Producers_Consumers_and_Policymakers)).

Sincerely,  
Evan Mills, Ph.D.

*Additional submitted attachment is included below.*

See discussions, stats, and author profiles for this publication at: <https://www.researchgate.net/publication/342364745>

# Energy Use by the Indoor Cannabis Industry: Inconvenient Truths for Producers, Consumers, and Policymakers

Chapter · June 2020

CITATIONS

0

READS

1,062

2 authors, including:



[Evan Mills](#)

Lawrence Berkeley National Laboratory (retired Affiliate)

157 PUBLICATIONS 3,605 CITATIONS

[SEE PROFILE](#)

Some of the authors of this publication are also working on these related projects:



Energy Efficiency: General [View project](#)



Energy efficient lighting [View project](#)

# **Energy Use by the Indoor Cannabis Industry: Inconvenient Truths for Producers, Consumers, and Policymakers**

Evan Mills, Ph.D.  
Scott Zeramby

June 22, 2020

Forthcoming in *The Routledge Handbook of Interdisciplinary Cannabis Research*  
Dominic Corva and Joshua Meisel (eds.)

## **Contents**

Introduction: Cannabis legalization is necessary but not sufficient for addressing energy waste ..	2
The cannabis conundrum: Drug policy is decoupled from environmental policy .....	4
Concern about the environmental footprint of cannabis production: Demonization or double standard?.....	5
Many externalities add to the social and environmental costs of indoor cultivation.....	9
Adverse public-health considerations and waste-generation from cannabis cultivation merit more analysis.....	10
Energy efficiency and renewable energy are not enough to mitigate the problem .....	11
Market distortions bolster environmentally detrimental cannabis production practices .....	15
The current policy environment increases the energy use of cannabis cultivation .....	16
A large research vacuum remains.....	19
Policy solutions.....	21
Conclusions .....	23
References .....	24

## **Abstract**

Decades spent in the shadows of the black market precluded opportunities to understand the energy use of indoor cannabis cultivation and compel the industry to keep its environmental consequences in check. Although the impacts of outdoor cultivation on ecosystems have received considerable attention, those associated with vastly more energy-intensive indoor cultivation have rarely been evaluated and integrated into policy-making, even in the post-prohibition era. Indeed, indoor cannabis cultivators continue to be passed over by most energy policy instruments developed since the energy crises of the 1970s. Moreover, some cannabis regulations are inadvertently driving energy use upwards, while “financial incentives” for energy efficiency offered to indoor growers by utility companies subsidize and legitimize polluting activities that could be performed outdoors with virtually no energy use. These anti-competitive repercussions of ill-conceived and poorly evaluated policy demonstrate that cannabis legalization is necessary but not sufficient to address environmental issues. This chapter pinpoints blindspots in regulation, outlines research and analysis needs, argues for consumer information and protections against greenwashing and industry capture of regulatory and green-certification processes, and offers recommendations for incorporating energy considerations into the broader tapestry of cannabis policy. Even at ostensibly high energy efficiencies and use of renewable energy, indoor cultivation “optimizes the suboptimal” and cannibalizes renewable energy infrastructure developed for other purposes, which is untenable in a carbon-constrained world. Outdoor cultivation—which has sufficed for millennia—is the most technologically elegant, sustainable, ethical, and economically viable approach for minimizing the rising energy and environmental burden of cannabis production.

## **Introduction: Cannabis legalization is necessary but not sufficient for addressing energy waste**

Decades spent in the shadows of the black market created few opportunities to understand the patterns of energy use associated with indoor cannabis cultivation, let alone compel the industry to manage consumption and thus keep its environmental consequences in check.<sup>1</sup> Cannabis production, distribution, and sale involve a myriad of energy uses, some of which are direct and others indirect (Figure 1). Drivers of energy demand include creating the inputs and energy used during production, processing, managing waste, downstream retail activities, and transportation. Key decision-makers and stakeholders include policymakers, planners, producers, investors, industry analysts, and consumers.

---

<sup>1</sup> This chapter expands on a presentation entitled “Policymakers’ Primer on Addressing the Carbon Footprint of Cannabis Production” to the Council of State Governments annual meeting in December 2017 (Mills 2017).

**Direct and indirect drivers of energy use and greenhouse-gas emissions from the cannabis industry**

<p><b>Inputs</b></p>	<ul style="list-style-type: none"> <li>• Energy (on-grid and off-grid)*</li> <li>• Industrial CO2*</li> <li>• Water production and supply</li> <li>• Soil and amendments</li> <li>• Artificial growing media</li> <li>• Fertilizer</li> <li>• Pesticides, herbicides, fungicides</li> <li>• Plastics (bagging, mulch, greenhouse sheeting, containers, irrigation, etc.)</li> </ul>	
<p><b>Production</b></p>	<ul style="list-style-type: none"> <li>• Outdoor</li> <li>• Small structure (windowless)*</li> <li>• Large structure (windowless)</li> <li>• Greenhouse</li> <li>• Energy use: lighting, cooling, heating, ventilation, odor control, CO2 generator, dehumidification, water heat, pumping, IT, plug loads*</li> </ul>	
<p><b>Processing</b></p>	<ul style="list-style-type: none"> <li>• Flower drying* or freezing</li> <li>• Energy for producing extracts; solvents (butane, propane, ethanol, isopropyl alcohol)</li> <li>• Cooking/baking</li> <li>• Packaging</li> <li>• Testing labs</li> </ul>	
<p><b>Waste</b></p>	<ul style="list-style-type: none"> <li>• Failed/interdicted crops; material not passing inspection</li> <li>• Single-use soil or artificial growing media</li> <li>• Plastics</li> <li>• Hydroponic water effluent to waste-treatment plant</li> <li>• Biomass</li> </ul>	
<p><b>Retail</b></p>	<ul style="list-style-type: none"> <li>• Facility construction</li> <li>• Lighting</li> <li>• Heating</li> <li>• Cooling</li> <li>• Ventilation</li> <li>• Refrigeration</li> </ul>	
<p><b>Transport</b></p>	<ul style="list-style-type: none"> <li>• Materials to jobsite</li> <li>• Workers to jobsite*</li> <li>• Product to intermediaries</li> <li>• Product to retail*</li> <li>• Consumer to retail*</li> <li>• Delivery services</li> <li>• Waste disposal</li> </ul>	

\* Items accounted for in energy-use estimates by Mills (2012).

Figure 1. Modes of energy use associated with cannabis production, distribution, and sale.

Although the impacts of outdoor cultivation on ecosystems have received considerable attention (and do not primarily involve energy), those associated with far more energy-intensive indoor cultivation have only rarely been evaluated and integrated into policy-making, even in the post-prohibition era. Indeed, cannabis cultivators continue to be passed over by almost every energy policy instrument developed since the first modern energy crisis of nearly half a century ago. Moreover, there are many instances of post-prohibition cannabis policies that are inadvertently driving energy use upwards, while the “financial incentives” for energy efficiency being offered

to indoor cultivators by electric utility companies represent a counter-productive subsidy and legitimization of a polluting activity that could be done much more sustainably outdoors.

The sometimes anti-competitive repercussions of ill-conceived policy and scant evaluation of policy adequacy demonstrate that legalization is necessary—but not sufficient—to address the associated environmental issues. These considerations intersect with more prominent cannabis policy issues such as taxation, public health and safety, interstate commerce, testing and product labeling, broader agricultural policy, and solid waste management. Particularly vexing is that even the most basic analyses are impeded by lack of rigor and lingering uncertainties about the structure and drivers of energy use and how far energy-efficiency and renewable energy can realistically go towards mitigating the associated undesirable impacts. For example, stemming from fundamental data gaps, even baseline studies often omit key considerations, and unwittingly suffer from unquantified biases due to problems with data collection and verification.

This chapter pinpoints blindspots in regulation, outlines research and analysis needs, argues for consumer information and protections against greenwashing and industry capture of regulatory and green-certification processes, and offers recommendations for incorporating energy considerations into the broader tapestry of cannabis policy. The balance of evidence suggests that Even at ostensibly high energy efficiencies and intensive use of renewable energy, indoor cultivation “optimizes the suboptimal” and cannibalizes renewable resources previously developed for other purposes, which is untenable in a carbon-constrained world. Outdoor cultivation—which has sufficed for millennia—is the most technologically elegant, sustainable, ethical, and economically viable approach for minimizing the rising energy and environmental burden of cannabis production.

## **The cannabis conundrum: Drug policy is decoupled from environmental policy**

Few public policy issues are as multifaceted as that of cannabis production and consumption. Quantifying the energy use and carbon footprint associated with producing cannabis and its derivative products is one of the primary and least explored policy-relevant questions. When confined to the black market, this sector could not readily access relevant analysis and information sharing. However, little progress has been made in the wake of legalization efforts.

Windowless cannabis factory farms constantly battle local weather conditions to maintain round-the-clock tropical temperatures and pump out acres of electric light brighter than the summer sun, day or night. Such industrialized cannabis cultivation facilities—whether in Fairbanks or Phoenix—must simulate and maintain artificially cloudless tropical environments while suppressing humidity year-round. Industrially manufactured carbon dioxide (an added energy-intensive input and greenhouse gas in its own right, increasing carbon footprint on the order of 5% -- more if and as energy efficiency improves), is often injected to artificially boost plant growth. Running the equipment<sup>2</sup> needed to create and maintain these artificial environments can

---

<sup>2</sup> The primary energy users are heating and cooling, dehumidification, and lighting. With conventional lighting, most of the input energy results in heat generation which needs to be immediately removed by air conditioning. Other miscellaneous energy loads

require as much energy as a similarly sized data center. Indoor cultivators cite multiple reasons for this practice: security, a more predictable product, buffering from weather and other crop hazards, maximized cash flow due to year-round production, the need for fewer employees, legislative restrictions, and multiple harvests per year.<sup>3</sup>

As with most other environmental issues, those associated with cannabis get “shaded out” by other seemingly more pressing concerns faced by policymakers (taxation, zoning, child safety, etc.). Together with the highly technical and complicated nature of how energy is used in the industry and how to quantify energy efficiency, few policymakers are even equipped to engage effectively. As a case-in-point, the IRS has been thwarted in pursuing tax-fraud cases since it cannot readily correlate reported sales volumes with utility bills.

## **Concern about the environmental footprint of cannabis production: Demonization or double standard?**

Energy-intensive indoor cultivation has been conducted within the black market for decades. The original shift to the practice was, in part, a structural product of prohibition enforcement efforts that pushed growers indoors to avoid detection (Silvaggio in this Handbook). Legalization does not intrinsically address the energy issues, and can even compound them by encouraging the rapid scale-up of indoor facilities and otherwise altering patterns of energy use in unexpected ways, some of which are noted below.

Some industry advocates have complained that cannabis is singled out for scrutiny, while other sectors are left to their devices or otherwise pollute more. This argument is spurious (Mills 2016), as cannabis is in actuality one of the vanishingly few segments of the economy that has been largely overlooked in energy and environmental policy. Moreover, as is well established in the climate change mitigation field, there is no “silver-bullet” solution and a multitude of energy uses must be simultaneously addressed in order to meet society’s important emissions-reduction targets. It is a false choice to argue that one energy use should be addressed in lieu of another. There is no one cause of climate change, and thus no one solution. Meanwhile, the cannabis sector is arguably decades behind the rest of the economy when it comes to energy efficiency. In any case, adequate technical fixes are unlikely to be available if the demand for extraordinary levels or artificial illumination persists.

A key starting point for establishing a context for good decision-making is quantifying the level of energy use and associated greenhouse-gas emissions, and how that compares to other activities. Until less than a decade ago, no peer-reviewed public-domain assessment of cannabis energy use had been published. Early work on this question included a national scoping estimate of the issue based on the largely pre-recreational-legalization policy environment, where virtually all large-scale cultivation was conducted outdoors and indoor cultivation was

---

can include irrigation pumps, water pre-heaters or coolers, air disinfection systems, motors to operate light-deprivation curtains, and crop dryers. Transportation (during and after production) and post-cultivation product manufacturing further contributes to energy use and carbon footprint.

<sup>3</sup> This latter argument is not material, as outdoor growers using light-deprivation methods also achieve multiple harvests per year. Moreover, reducing labor intensity is contrary to the job-creation objectives of some cannabis policy makers.



predominantly windowless (Mills 2012). That said, small indoor operations were (and still are) numerous and generally not driven by energy efficiency considerations.

Based on best-available information at the time, a “bottom-up” model was created based on interviews with practitioners, equipment retailers, and published guidelines for growers (e.g. Rosenthal 2010) (Mills 2012). The boundary conditions (inputs and activities resulting in energy use and greenhouse-gas emissions) represented only a subset of those depicted in Figure 1. The per-facility results compared favorably to measured data available for indoor growing operations and the prevailing aggregate (e.g., state-level) energy demand estimates compared well with subsequent estimates by others, including the long-range planning authorities for the Northwest power system (Northwest Power and Conservation Council 2016).

From a national vantage point, Mills (2012) found that indoor cannabis consumed 20 billion kilowatt-hours of electricity annually, with additional amounts from direct fuel use, together corresponding to 15 million metric tonnes of CO<sub>2</sub> released into the atmosphere each year.<sup>4</sup> This in turn corresponded to an expenditure of \$6 billion per year on energy, nationally, which amounted to 9% of California household electricity use, 3% of total statewide electricity use (all sectors), and 1% of electricity use nationally. Other independent estimates have found similar economy-level results. For example, indoor cultivation is estimated to require 0.6% of statewide electricity use (all sectors) in Colorado and 4% in the city of Denver (Hood 2018).<sup>5</sup> Washington State also reports that indoor cultivation is responsible for one percent of the state’s overall electricity consumption (Jourabchi 2014), a number that has probably risen in the intervening years. As early as 2004, it was reported that indoor cannabis cultivation was responsible for 1% of electricity use in British Columbia (Easton 2004), which was long before the recreational legalization decision in Canada.

For context, the aforementioned national estimate was equivalent to the emissions of two million average U.S. homes or three million cars, and is more than four-times the aggregate U.S. pharmaceutical industry energy expenditure.<sup>6</sup> While part of this difference arises from the lower energy prices paid by industrial users compared to residentially-based cannabis producers of the time, it is noteworthy that the average energy intensity of pharmaceutical facilities (approximately 3,600 kBTU/sf-y) is well below that of indoor cannabis cultivation facilities (Capparella 2013) at around 5,500 kBTU/sf-y.<sup>7</sup>

An additional key finding was that the “energy intensity” (energy use per unit of floor area) in indoor cultivation facilities was vastly higher than that of other common building types (Figure 2).

---

<sup>4</sup> This analysis represented the typical small- to mid-scale indoor cultivation practices of the time.

<sup>5</sup> The City of Denver reports that 45% of its total growth in electricity demand stems from cannabis (Walton 2015).

<sup>6</sup> Note that the original study (Mills 2012) put this at six-times, but the value noted here is adjusted for approximately 25% of pharmaceuticals being consumed by Americans that are produced off-shore (Altstedter 2017).

<sup>7</sup> This cautiously assumes that the source is reporting in “site” energy units, i.e., not including the losses due to the inefficiencies of electricity production in power plants. The source’s estimate of 1,210 kBTU/sf-year translates to approximately 3,600 kBTU/sf-year when adjusting for this conversion factor.

## Energy intensity of indoor cannabis cultivation in context with conventional building types

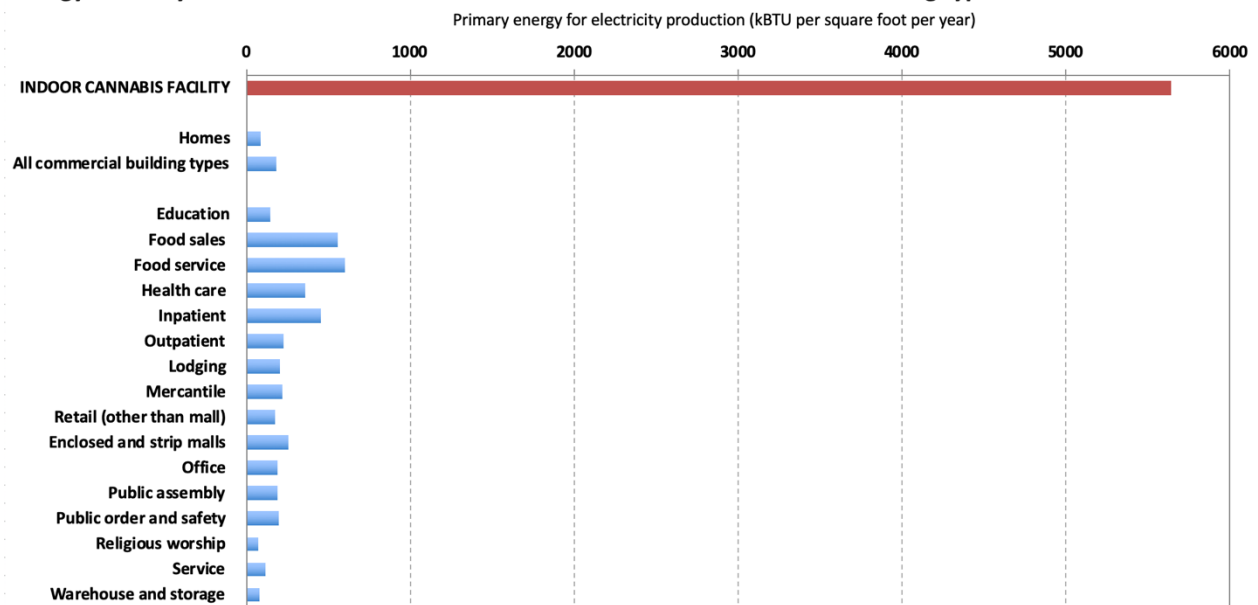


Figure 2. Cannabis energy intensity from Mills (2012). Reference data from U.S. Energy Information Administration. Homes (<https://www.eia.gov/consumption/residential/>). Commercial Buildings (<https://www.eia.gov/consumption/commercial/>)

From a regional vantage point, energy use can also be put in context by estimating how it contributes to per-person carbon emissions in economies where cannabis production is significant. While cannabis has been referred to as the largest cash crop in the U.S. in dollars (Gettman 2006), it is particularly significant in California. The implied per-person carbon footprint for the small populations in many of the producing areas is far above the averages in a state otherwise known for its energy efficiency—closer to that of the most carbon-intensive “coal” states, despite California’s being known as one of the least carbon-intensive states.

From a consumer vantage point, the energy use for growing one 1-gram “joint” creates 10 pounds of carbon dioxide pollution, equivalent to running ten 10-watt LED light bulbs (or one 100-watt incandescent bulb) for 76 hours (Mills 2012). That’s as much as driving 22 miles in a 44-mpg Prius. Embedded in each average indoor-grown plant is the energy equivalent of 70 gallons of oil. This means that a small “grow house” with ten grow lights consumes approximately as much electricity as ten average U.S. homes.

From a producer’s vantage point, the cost of energy use varies widely depending on energy prices and efficiency, while the importance of the cost depends on the prevailing wholesale price of the finished product. Other factors such as strain choice also have a large effect as well (Arnold 2011). Circa 2012, the average energy expenditure for indoor cultivation equated to approximately one-quarter to one-half of the wholesale price. As energy prices rise and wholesale prices drop (post-legalization) this ratio will become increasingly unfavorable and could even become a factor in the solvency of some producers. Indoor producers have a far more energy-sensitive business model than outdoor producers.

Widespread cultivation in large-scale greenhouses is a relatively recent development. A subsequent analysis of industrial-scale greenhouses found that they, too, are highly energy

intensive (Mills 2018), especially if poorly designed and operated. While these “hyper greenhouses” use less energy than windowless facilities per unit floor area, they still require prodigious amounts of lighting, cooling, heating, and dehumidification in most climates. As evidence of the issue, cannabis greenhouses are one reason cited for the need to update high-voltage electricity transmission lines in Canada (CBC 2019a). Data published by NFD (2018) found greenhouses in the U.S. to use half the electricity of windowless facilities on a per-square-foot basis, yet, due to their lower yields, they actually required only 25% less energy per unit weight.<sup>8</sup> An important caveat is that the values reported in that study do not include natural gas, which is a common heating fuel for greenhouses while heating in windowless facilities is often provided with electric heat pumps. When including natural gas, an assessment in Canada found that greenhouses used only about one-third less energy than windowless facilities (Posterity Group 2019). The data thus suggest that these greenhouses are anything but “green”, as their energy use per unit floor area still tends to be greater than that of virtually any other commercial building type.

A more recent attempt to estimate national energy consumption demonstrated many of the challenges in deepening the analysis (NFD 2018). Of note, the energy used for outdoor as well as greenhouse operations was usefully contrasted with that of windowless indoor facilities, and that of legal and black-market production estimated separately. The report admirably brought forward more measured data on specific facilities than previously available in the public domain, although the sample was small (only two dozen sites with energy and yield data), self-selected, and self-reported. Almost one third of the sites used LED lights for energy savings, likely far higher than the proportion of sites adopting this technology in the overall marketplace. The analytical scope had narrower boundary conditions (excluding energy sources other than electricity within the facility as well as transportation energy, and cultivation in perhaps more energy-intensive non-industrial settings such as homes and other informal “small-scale” facilities), did not include operations with on-site generators, and was based on a non-randomized sample weighted towards milder climates in the United States. The energy intensity of black-market operations was presumably equated with that of legal operations, embodying an assumption of equivalent efficiencies not verified with actual data. Meaningful direct comparisons to the Mills (2012) study are thus not possible given the narrower boundary conditions and non-representativeness of the sample. The study indicated that some energy-intensity metrics may be improving with the passage of time, as would be expected, although more definitive surveys are sorely needed. Of particular note, the NFD study found roughly a factor of ten variation in key energy intensity metrics (electricity per square foot and per unit of flower yield), indicating enormous non-standardization of existing practices and a correspondingly large potential for energy savings irrespective of historical trends. It is not yet known whether the energy intensity of contemporary legal production facilities is lower or higher than that of black-market operations.

\* \* \*

While it is encouraging to observe a variety of organizations developing environmental product labeling for cannabis, the methodologies often lack transparency and there is little or no direct

---

<sup>8</sup> Average reported values were 0.79 grams of dried flower yield per kWh for indoor facilities and 1.07 grams/kWh for greenhouses. Values elsewhere in the NFD report suggest the greenhouses were even less favorable.

recognition of excellence or penalties for underachievement. Organizational factors create real or perceived conflicts of interest (financial dependence on the industry and users of the product being evaluated, lack of an independent watchdog, and a chronic tension between profit or market share and rigor which can result in the dilution of standards). It has been reported that growers will “shop” for certifications that put their product in the best light (Bennett 2019).

Consumers are largely unaware of the energy and environmental impacts of indoor cultivation. It is notable that the “ethical purchasing” movement (consumers seeking to vote with their dollar, e.g., to promote sustainable products) has barely emerged in the cannabis marketplace and, perhaps fearing stigmatization, environmental organizations have conspicuously sidestepped the issue (Bennett 2019). Moreover, cannabis dispensaries have been found to be unreliable sources of information on environmental issues associated with the products they sell and existing sustainability certifications for cannabis are underdeveloped, vulnerable, and lack credibility (Bennett 2017; Bennett 2020, in this volume). Consumers thus operate in an information environment that impedes good purchase decisions.

All told, the CO<sub>2</sub> emissions of the *average* cannabis user ranges from 16% of their total household carbon footprint in Rhode Island (the state with the nation’s lowest consumption rate) where cannabis availability is highly limited to 59% in Colorado (the nation’s highest consumption rate) where it is pervasive. Put differently, the per-capita emissions are equivalent to that from powering two high-efficiency refrigerators in Rhode Island and nine in Colorado.<sup>9</sup>

## **Many externalities add to the social and environmental costs of indoor cultivation**

In addition to the policy community’s need to better understand facility-scale energy use cannabis operations are various externalities (side effects not reflected in the prices of goods sold) that are not often considered or quantified.

These include moisture damage to buildings, nighttime light pollution, power plant emissions and other environmental impacts, power theft, and power outages and other constraints on the broader grid caused by unchecked electrical load growth. As an example of this latter issue, the city of Portland Oregon associated seven power outages over a period of five months with indoor cannabis operations (Pacific Power 2015) and Portland General Electric traced 85% of its residential transformer problems to indoor cannabis growing (Borrud 2015).

In 2010, British Columbia reported that power theft by two thirds of cannabis producers was costing the utility \$100 million per year (BC Hydro 2016). At that time cannabis was legal only for medical purposes, and most of the offending facilities were serving the black market.

Unpermitted or uninspected electrical wiring has been the source of a disproportionate number of fires in some localities, and the building stock has been damaged by mold and other

---

<sup>9</sup> Per-capita cannabis consumption from *MJ Business Daily* (<https://mjbizdaily.com/chart-of-the-week-average-annual-mmj-purchases-by-state-vary-widely/>). State-specific household emissions from U.S. Department of Energy, Energy Information Administration. Assuming cultivation carbon footprint per Mills (2012).

consequences of raising humidity in buildings not intended for agricultural operations (Fire Chiefs Association of British Columbia 2008; Mills 2012). Massive fires have occurred even in legal facilities (Reuters 2015).

Cultivating cannabis in areas based on hydro power is often touted as an environmentally benign alternative to carbon-based power. However, attention has recently been given to the likely linkages between hydroelectric power production, reduced salmon populations, and starvation issues facing salmon-eating killer whales (*orcas*) in the Pacific Northwest (Mapes 2018; University of Massachusetts 2017). Hydroelectric power also results in more water evaporation than other forms of electricity production.

## **Adverse public-health considerations and waste-generation from cannabis cultivation merit more analysis**

Another form of externality—public health impacts related to energy-intensive cultivation practices—merit close analysis. Cannabis has been widely demonstrated to offer medical benefits under the appropriate circumstances. However, the countervailing health-related dimensions of indoor cultivation—for workers and the general public—have not received much attention, although it is treated elsewhere (Schenker and Langer in this Handbook).

Indoor environmental conditions can be an issue for workers and consumers. For example, while mold is a common risk to product viability for indoor and outdoor cultivators alike, indoor environments can be particularly prone to mold growth that can destroy an entire crop. The risk is especially high during power outages or equipment failures when ventilation and dehumidification processes are interrupted. In another example, doubling or quadrupling of current background carbon-dioxide levels (up to 1500 ppm, to push growth) was once believed to be safe for humans but has subsequently been found to result in CO<sub>2</sub> levels found to significantly reduce nine distinct measures of cognitive and decision-making functioning (Fisk *et al.*, 2013; Allen *et al.*, 2015). Combustion products, such as carbon monoxide, from unvented on-site CO<sub>2</sub> production can also pose health hazards.

Concerns have been raised about the effect of large concentrations of plants in urban areas adversely impacting air quality through their emissions of volatile organic compounds (VOCs). A recent investigation focused on the potential that 600 cultivation facilities within the city of Denver Colorado could double the prevailing levels of VOCs, while air pollution in that city already periodically violates federal limits (Plautz 2019).

More broadly, energy production itself has well-known health consequences, and of course is the primary source of human-generated greenhouse gases which bring their own health impacts. Mills (2012) estimated national greenhouse-gas emissions of 15 metric tons of CO<sub>2</sub> each year from indoor cannabis cultivation across the United States. Outdoor practices can also result in greenhouse-gas emissions from land-use change and use of chemical fertilizers.

Hazardous wastes associated with indoor cultivation are also understudied. The “high-intensity discharge” lamps used for most cultivation contain significant amounts of mercury. The extent of recycling/recovery of this mercury is unknown, and broken lamps introduce mercury into the

growing facility in an uncontrolled fashion. More costly LED lights do not contain mercury. However, recycling programs for LED fixtures are not yet in place.

Indoor practices involving hydroponics (or even traditional irrigation) yield contaminated wastewater that may be introduced into or circumvent wastewater systems. Moreover, non-degrading growing media, such as mineral wool that is saturated with nutrient-laden water, is typically sent to landfill after each harvest. We estimate that an operation with 100,000 square feet of canopy requires 14,000 to 34,000 cubic feet of mineral wool per cycle, which would result in the generation of approximately 85,000 to 200,000 cubic feet of solid waste to landfill over a year with six growing cycles. This results in waste generation of 5- to 11-times the weight of the processed flowers.<sup>10</sup> Recycling of agricultural mineral wool is not currently available in the U.S. Indoor operations also tend not to re-use soils after each growth cycle, which is yet another large source of solid waste.

## **Energy efficiency and renewable energy are not enough to mitigate the problem**

A key challenge intrinsic to the indoor cultivation process, and compounded by seemingly unrelated local ordinances or needs, is that these facilities tend to embody a number of counterproductive design and operational features that make energy use even higher than need be. For example, CO<sub>2</sub> injection requires facilities to be sealed and all air recirculated, which, in turn, boosts energy use significantly. Another example is the sometimes-mandated use of tall opaque walls in front of greenhouses in the name of security which can also block useful sunlight and thus require added electric lighting energy input. Location of these facilities in or near population centers requires high-resistance air filtration to control odor, which, in-turn requires increased ventilation energy to counteract the backpressure caused by the dense filter media. Heat is often run at the same time as air conditioning in an effort to control humidity that can otherwise lead to mold growth. Lastly, local light-pollution ordinances may require that light-deprivation covers be drawn over greenhouses at night (light may be on during that time, e.g., when the days are short or to capitalize on cheaper power rates), which can trap heat and thus require additional cooling energy. Lastly are a host of energy-using technologies to remove mold with UV, treat polluted water, recapture and purify waste water, etc., that are ironically used to improve the “sustainability” of indoor cultivation.

Despite these challenges, the industry has begun to look for efficiencies, likely driven more by the squeeze between falling wholesale prices and rising energy costs than by environmental concerns (Pols 2017). Aside from efficiencies (e.g., energy used per given weight of finished product), it is critical to maintain focus on trends in *aggregate* demand, especially for a growing industry. For example, Colorado reports a startling year-over-year increase of 23% in overall production (Hood 2018) and electricity use increased by 36% annually between 2012 and 2016 (Denver Public Health and Environment 2018). Energy efficiencies cannot improve rapidly enough to offset such growth, and the preceding numbers suggest that energy intensity has actually been increasing. The energy forecasting authority in the Pacific Northwest projects an 82% increase in energy demand despite improving energy efficiency (Jourabchi 2014). A large-

---

<sup>10</sup> See assumptions below in the discussion of mineral wool embodied energy.

scale energy savings study for the province of Ontario, Canada, found a *maximum technical* potential of only 16% for indoor facilities and 21% for greenhouses (*without* accounting for limited uptake rates or cost-effectiveness) (Posterity Group 2019).

Sleek images of energy-saving LED lights and greenhouses look “green” on the surface, but the devil is in the details. These lighting systems are still quite energy intensive.<sup>11</sup> One experiment found that 780 Watts of LED were needed to replace 1000-1100 watts of traditional lighting (Massoud 2014) in order to maintain yields. Peer-reviewed research dating from the time these alternative lighting sources first started being manufactured suggested that cannabis grown under LEDs may actually take longer to mature and have lower yield and/or potency (Pocock 2015), thus saving little if any energy on a per-weight basis (Nelson and Bugbee 2014). LED performance in these applications appears to be improving, although even more recent studies obtained mixed results (Leichliter *et al.*, 2018). However, product attributes (flower appearance) may be adversely affected by LEDs, which is a palpable market risk for producers. The up-front cost of LED lighting is also vastly higher than conventional lighting, the recovery of which requires a long time-horizon for the facility developer. Although the vast majority of indoor cultivation facility space has been constructed since LED fixtures have been available in the market, adoption rates are probably in the low single-digit percentage range. An in-depth analysis for Canada found that the technical potential energy savings for LED lighting (without regard for cost-effectiveness or limited adoption rates) was only 7% of entire facility-level energy use (Posterity Group 2019).

These barriers notwithstanding, it is certainly possible to construct cultivation facilities with far higher energy efficiencies than is done at present. Indications of these opportunities as applied to the facility envelope and daylighting are provided by Kinney *et al.* (2012).

That said, there is a degree of naïve optimism and hubris that cultivators need only “go solar” to solve the problem of any remaining energy requirements after efficiencies have been captured. The feasibility of this has not been demonstrated at scale, probably because the required solar array would need to be many times larger than the roof of the facility, and could not be on the roof at all if a traditional greenhouse design is used. Even in areas with excellent solar availability, only about 5% of a facility’s electricity needs could be generated on the roof (Mills 2018). This is even the case for one very large greenhouse-style facility in Southern California. One noted large-scale facility aiming to be as sustainable as possible achieved a solar contribution of about 30% (Daniels 2019), which presumably required using a very large area of land beyond the building footprint. A state-of-the-art facility in Canada is expecting to offset only 8% to 10% of its electricity use by covering its entire roof (CBC 2019b), emitting approximately 9,000 tons of CO<sub>2</sub> per year instead of 10,000 tons without the solar.

While it can be argued that cannabis industry as a whole can, in principle, be powered with centralized renewable energy, the amounts required are prodigious and for practical purposes (e.g., land-use constraints) often limited. Although California’s Coachella Valley is one of the largest wind-energy production areas in that state, cannabis production there (assuming business-

---

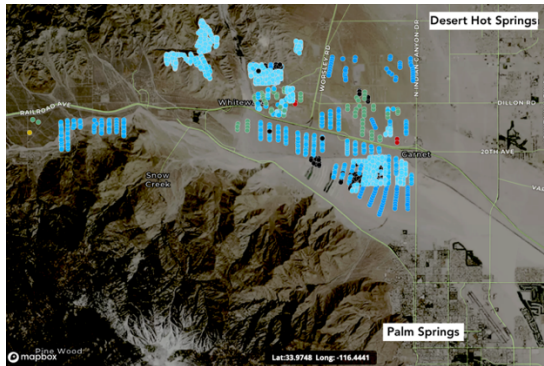
<sup>11</sup> One advantage of less-efficient high-intensity discharge lamps is that the heat-producing ballasts can be remotored outside the conditioned space, thereby reducing air-conditioning needs. LED ballasts are integral to the fixture and cannot be remotely located.

as-usual energy efficiencies) will soon eclipse the entire output of all 40 wind-power projects located in the area (Figure 3). Our “bottom-up” estimate is that projects already in operation consume 13% as much as wind energy in the area produces, although other estimates (Daniels 2019) suggest cannabis facilities in the “west side” of Coachella Valley consume 235 megawatts, which is fully 35% the rated capacity of all wind projects in the area. Full build-out of existing cannabis facility entitlements would consume far more: 11-times as much electricity as can be produced by all existing wind systems in the area, and more than all the wind power generated across California. It has taken decades and the dedication of vast land areas to build up this level of wind-generation capacity. From a broader public-policy vantage point, there is an acute shortage of investment in renewable energy infrastructure to offset even existing carbon emissions, let alone emissions growth from new energy-intensive development. This comparison serves as a poignant illustration of the broader problematic tension between advances in renewable energy supply and unbridled growth in energy demand.





2,229 wind turbines in Coachella Valley, CA



663 megawatts of wind power across 40 projects



Large-scale indoor cannabis cultivation



Indoor cannabis cultivation facility, Cathedral City, CA

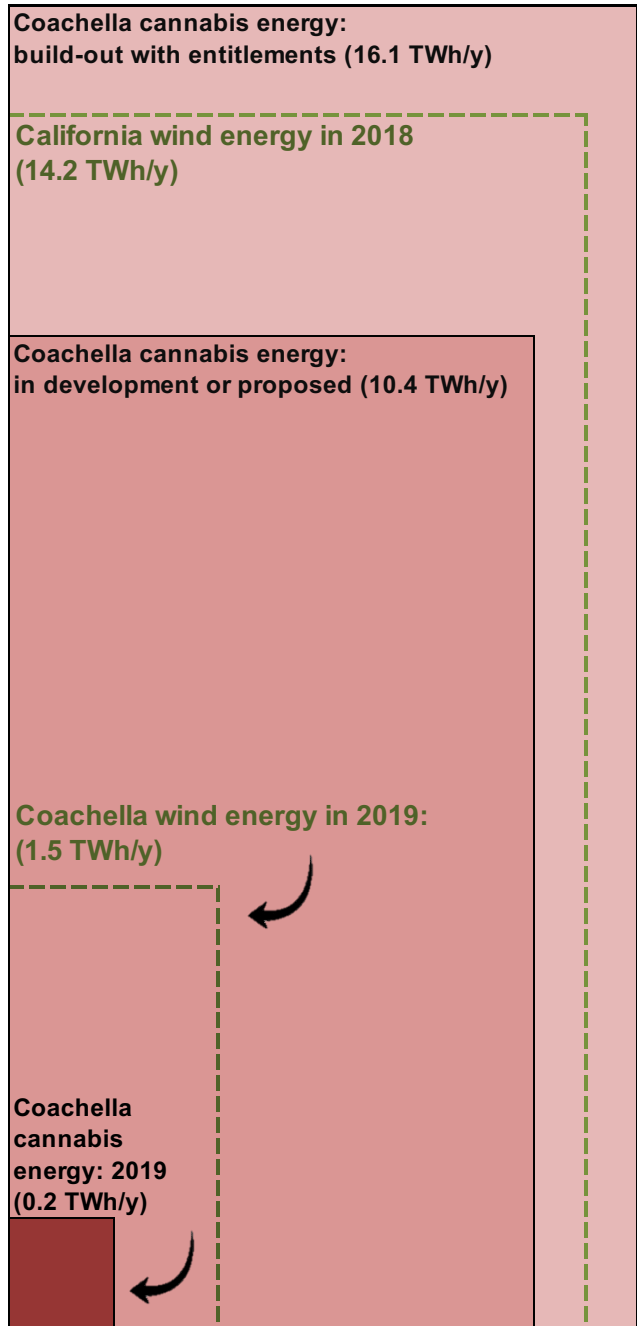


Figure 3. California’s Coachella Valley is the site of 10% of the State’s wind energy production. Cannabis cultivation facilities already in operation in five cities within the Coachella Valley require 13% of the entire electricity production of the 40 wind energy projects (2,229 turbines) located throughout the valley. This will grow to more than 70% of the area’s total wind energy output upon completion of cannabis-facility projects proposed or under development. Full build-out per existing entitlements will consume eleven-times as much power, significantly exceeding the 14 TWh/year generated by wind power in all of California. Sources: photo of turbines from ecoflight.com, with permission; satellite view from USGS (2019); interior of cultivation facility from systemsnpspace.com, with permission; Rendering of Venlo-type glasshouse by Sunniva (under construction), with permission.<sup>12</sup>

<sup>12</sup> Calculation notes: Estimated cultivated area development status in five Coachella Valley cities, based on Simmons (2019), with 350,000 square feet of “canopy” as of April 2019, 19.4 million square feet proposed or under development, and 30 million

## Market distortions bolster environmentally detrimental cannabis production practices

Among the fundamental preconditions for “perfect functioning” of markets is a vibrant information environment for all actors. Unfortunately, energy-relevant information in the cannabis industry is incomplete and often incorrect. One long-standing “myth” is that indoor-cultivated cannabis is superior to its outdoor counterpart. This is a commonly held view in the popular culture, and dispensaries are notorious for “bottom-shelfing” outdoor-grown products as inferior and otherwise favoring and steering customers towards indoor-grown products. Industry experts have argued to the contrary (*San Francisco Bay Guardian* 2011).

Economic signals can also distort markets. Energy utilities receive billions of dollars per year from cannabis cultivators. While utilities play a key role in improving energy efficiency in the economy at large (assuming that policymakers ensure that investing in new energy supply is not more profitable than investing in efficient use), utilities benefit far less from outdoor cannabis cultivation and have not been observed to encourage it.

In some areas, indoor cultivators receive the historically low, subsidized electricity prices enjoyed by traditional outdoor farmers (PG&E 2017). Many agricultural customers also receive industrial rates,<sup>13</sup> which are lower than those paid by occupants of other types of buildings (warehouses, data centers, offices, etc.). Subsidies of this sort to indoor growers make them more competitive against outdoor growers while reducing the profitability of making energy efficiency improvements or investment in renewable energy supply.

Conversely, in order to discourage indoor cultivation, some well-intended policymakers have sought to impose extreme electricity surcharges (*The Arcata Eye* 2012). In practice, however, the expected effect could be to merely force relocation. This may “solve” the locality’s problem, but does not address global energy concerns and can even push cultivators off-grid and onto even more polluting diesel generators for power.

In other contexts, good public policy has often included financial incentives for energy efficiency (rebates, tax credits, etc.). However, in this context, the greatest possible energy savings can be obtained by shifting to outdoor cultivation. A perspective must be maintained that even super-efficient indoor facilities are highly energy intensive when compared to other building types (imagine the values in Figure 2 being reduced by, say, 75%). Outdoor producers are disadvantaged when their well-funded indoor competitors are subsidized with efficiency incentives such as rebates that are, in turn, paid by consumers through utility tariff “adders” (the traditional way of financing utility rebate programs). Such incentives arguably disrupt market forces that could otherwise lead to reduced energy use.

---

square feet entitled. Energy intensity is that calculated by Mills (2012). Note that while NFD (2018) cites lower average electricity intensity for some states, their value for the adjacent desert state (Nevada) in their sample is virtually identical to that used here for a California desert location. Wind energy generating capacity values are from USGS (2019) and associated energy production from California Energy Commission (2019a). Average wind energy production rates for 26 projects (475 MW) in the area (2.23 GWh/MW) are applied to the total installed 663 MW for the area to estimate total electricity production.

<sup>13</sup> See <https://www.eia.gov/todayinenergy/detail.php?id=16231>

Investor roles in indoor operations also have an impact. Enormous cash infusions following initial public offerings of stock can disincentivize efficiency, particularly if investors are unaware of best practices or unequipped to evaluate the adequacy of cultivation practices. Losses arising from inefficiency of energy use (or other inputs) can be camouflaged by lack of transparency, investor ignorance of energy engineering, and the willingness of investors to infuse more capital if there are shortfalls. An example of this is Canopy Growth Corporation, who, despite shrinking gross margins and being unable to post a profit from their primarily indoor-cultivation-based business was still able to attract a \$4 billion investment from Constellation Brands (Alpert 2019). Compounding these problems, cultivation-facility investors tend not to have the time horizons needed to amortize energy efficiency or renewable energy investments.

## **The current policy environment increases the energy use of cannabis cultivation**

Prohibition was previously blamed for the environmental impacts of cannabis cultivation, but the reality is far more complicated (Vitiello 2016). Indeed, owing to the lack of coordination between cannabis policy and environmental policy, decisions are inadvertently being made in the post-prohibition era that are compounding the energy problem.

That said, there are ample reasons to pursue regulation. For example, historically, some black-market growers have been rumored to leverage the fact of their undocumented income to take advantage of low-income electricity tariffs. This not only created an unintended cross-subsidy from other ratepayers, but the low rates also reduced their incentive to invest in energy efficiency or shift cultivation outdoors.

Local control of cannabis market regulation (e.g., at the city or county level) can lead to perverse outcomes that distort broader market conditions. For example, as noted above, the Coachella Valley in southern California has become a major hub of production due to the absence of caps on facility size, local efforts to promote the industry, and a generally permissive regulatory environment. Conversely, local ordinances set a very large minimum size for facilities at five acres (over 200,000 square feet) (Maschke 2018). As a result, very large-scale indoor cultivation is taking place in this extremely hot region, requiring far more air conditioning and ventilation than in climates more naturally suited for cultivation. An engineer working in the area is quoted as estimating that cannabis cultivation facilities use about 25-times as much energy as a “standard industrial” development (Daniels 2019).

Perversely, there are many reports of localities banning outdoor cultivation as part of their legalization process, examples of which are Nevada County, California (Riquelmy 2016) and the entire state of Illinois (Thill 2019). Regulations also require all production to occur indoors in Canada (CBC 2019b). These measures are presumably taken with security in mind. Yet, if giant internationally sanctioned opium poppy plantations for pain-management drugs can be secured outdoors (Bradsher 2014), surely cannabis farms can do so as well. Other localities stipulate equal limits to the allowable cultivation area for indoor and outdoor cultivation, thus strongly biasing choices towards energy intensive indoor operations where more crops can be produced each year.

Local officials and others have cited the odors arising from outdoor cultivation as a significant problem, and suggest the activity be restricted to indoor facilities (Johnson 2019). This of course also entails the implementation of high-resistance air filters for odor control which, as noted above, increase ventilation energy needs.

Once indoor cultivation is endorsed (or mandated), it becomes incumbent on policymakers to ensure that the resultant energy use is not excessive. Virtually all building types and the equipment in them are subject to energy codes and standards in the United States, yet comprehensive ones appropriate for cannabis cultivation facilities have not been promulgated and the supporting research essential for standards analysis has not been conducted. Massachusetts is among the early states to grapple with this. The state has determined that a single (massive) indoor cultivation facility could result in an increase in lighting demand equal to the energy saved over many years by the state's effort to convert over 130,000 streetlights from conventional high-intensity lamps to LEDs.<sup>14</sup> However, the state's efforts at setting energy standards have been clumsy, e.g., seeking to specify wattage limits on individual light fixtures, which could easily result in operators installing more fixtures than would otherwise be the case (Davis 2019a).

In another example of unintended energy consequences, mandatory product testing--which is certainly a potentially appropriate policy intervention—can uncover long-standing practices that yield unacceptable contamination levels in the final product. Tainted cannabis products must be destroyed, thus entailing all associated energy to be reallocated to materials that pass testing. The safety thresholds stipulated by the regulations are not necessarily based on scientific study, and nor are they consistent with standards for other consumer products. For example, there are no standards or testing for heavy metals in tobacco, despite it being known to contain them, yet testing is done at the parts-per-billion level for cannabis. Researchers have described the lack of studies on the health risks of heavy metals in tobacco (Caruso *et al.*, 2014).

Some previously black-market cultivators have found the new permitting processes under legalization to be onerous and so time-consuming that they cannot transition their businesses to the regulated market. This already appears to be having the effect of driving some legal producers back to the black market, and thus away from access to policy inducements for environmentally improved practices. As of April 16, 2019, roughly 3,000 temporary cultivation permits had expired and the California Department of Food and Agriculture (CDFA) had issued only 62 annual licenses and 564 provisional permits. Reports indicated that less cannabis was sold (legally) in the year after recreational laws went into effect than before (Fuller 2019). As an indicator of the size of the black market, the most recent official estimates of California's cannabis production, a report published in 2018 by the California Department of Food and Agriculture, showed the state producing as much as 15.5 million pounds of cannabis and consuming just 2.5 million pounds (ERA Economics LLC 2017). The balance is presumably illegal export to areas where prevailing retail prices are higher.

Even where states legalize cannabis cultivation, localities can thwart implementation, further reinforcing black-market activity. For example, there are many counties in California where a

---

<sup>14</sup> Cannabis Energy Overview and Recommendations, MA Department of Energy Resources Energy and Environmental Affairs, 2/23/18, slide 6.

public majority voted to legalize cannabis yet local government has banned most if not all cannabis-related business activities. According to Schroyer and McVey (2019) only 161 of California's 482 municipalities and 24 of the 58 counties allow commercial cannabis businesses.

A key example of the consequences of a resurgent black market are that off-grid cultivation using diesel generators results in an even higher "carbon footprint" (carbon per unit of electricity produced and consumed) than the electric grids in many areas -- e.g. 2.5-times higher in the case of California (Mills 2012).

Relevant to indoor and outdoor cultivation alike, cannabis regulatory practices also counterproductively influence transportation energy use. In the California regime, for example the product is typically transported at least four times between the point of cultivation and the point of consumption. Regulations require farmers to transport their product to processors, who then transport to distributors, who then transport to dispensaries. Retail consumers then transport the final product from the dispensary. Shipments of only 25 to 40 pounds between farmer and processor are not atypical. The amounts transported become progressively smaller along the supply chain, which multiplies the numbers of trips.

Transport energy notwithstanding, one fundamental policy barrier to reducing energy use is restrictions on interstate commerce. A comparison of electricity use per unit yield in seven states found a variation of 3.4-fold and that for greenhouse-gas emissions of 26-fold, and this did not include the full range of climate severity or power plant emissions factors seen across the whole country (NFD 2018). Were the nation's supply of cannabis grown in climatically benign locations, energy use would be vastly reduced as would pressures to grow indoors.

### **The case of California: A cannabis-climate train wreck driven by ill-informed policymaking**

California is a beacon of progressive environmental thought and has long been an engine for innovative environmental technologies and policies. State legislators have passed some of the most far-reaching climate change policies and targets in the world, notably the California Global Warming Solutions Act of 2006 (SB-32), designed to reduce statewide greenhouse-gas emissions to a level 40% below 1990 levels by the year 2030.<sup>15</sup>

Yet, the regulatory structure established for the cannabis industry now works at cross-purposes to these overriding goals (Mills 2019). Seemingly prior to any rigorous analysis of energy impacts, the state dictated that indoor cultivation was integral to the broader goal of legalization, creating a preordained legal "purpose" that cannot be questioned by subsequent environmental considerations. This binding purpose led to the explicit rejection of "environmentally superior" outdoor cultivation alternatives identified in the official Environmental Impact Report (EIR), despite a recognized lack of data that precluded more than cursory quantitative environmental impact analysis.

The EIR takes several leaps of faith to conclude that the legalization program will be "beneficial" to attaining the State's greenhouse-gas emission reduction goals. They achieve this

---

<sup>15</sup> [https://leginfo.legislature.ca.gov/faces/billNavClient.xhtml?bill\\_id=201520160SB32](https://leginfo.legislature.ca.gov/faces/billNavClient.xhtml?bill_id=201520160SB32)

feat by assuming, remarkably, that overall cannabis production levels will not rise materially following legalization, while the legal fraction of production will increase from approximately 5% to 10% of statewide totals (the rest remaining in the black market) and that this increment will automatically conform with the state's SB-32 emissions-reduction target thus rendering aggregate emissions slightly lower than without legalization.

The net effect of these machinations—juxtaposed with the market and policy failures outlined earlier in this chapter, particularly the forcing of indoor cultivation in many local jurisdictions—is that California has thus far failed to grasp a rapidly closing window of opportunity to manage energy use and greenhouse-gas emissions from the cannabis industry. Few localities have made efforts to manage energy use and emissions (California Department of Food and Agriculture 2017). A limited building energy standards-setting process is slowly being explored, but the earliest date for possible implementation will be 2022 – a full 25 years after the state's initial legalization of cannabis for medical use (California Energy Commission 2019b).

## **A large research vacuum remains**

Although it has been many years since the energy issues of cannabis cultivation were first identified (Mills 2012), very little subsequent research has been conducted and thus policymaking proceeds in an information vacuum. Contributing to this problem, the cannabis industry and energy suppliers are not always forthcoming with information about current practices, and are selective about what they do release. Early work pointed out the need for open-source energy benchmarking using measured data (Mills 2012). Some studies have come forward with information of this sort, often with small samples limited to a certain region or type of cultivation (e.g., County of Boulder 2017) while other efforts are pooling and standardize the information, although based on self-selected participants and limited public access to the data.<sup>16</sup> Also needed are improved estimates of market-scale drivers (numbers and types of cultivation facilities, consumption trends, etc.) Much more data (and modeling) are needed to get a strong handle on trends in national energy use associated with indoor cannabis production, and to understand the potential for improved energy efficiency and greenhouse-gas reductions. More broadly, measured data alone does not help improve efficiency unless it compels the adoption of improved practices and technologies.

Among the critical technical questions remaining unanswered:

### **Are newer large industrial-scale facilities more or less energy efficient than traditionally smaller indoor cultivation practices?**

No definitive data have been presented in answer to this question. On the one hand, more efficient heating and cooling systems can be expected, but on the other hand higher ceilings and wider lanes for vehicles and equipment result in far greater volumes of air needing to be space-conditioned. Pressure for maximum yields, which includes six or more crops per year, may also entail greater aggregate energy inputs but less per final unit weight.

---

<sup>16</sup> See <https://powerscore.resourceinnovation.org>

### **How much energy is used in manufacturing extracts and other derivative products?**

These processes can be energy intensive, involving equipment that creates high pressures and temperatures, post-processing, etc. In some cases, raw materials are frozen and stored prior to extraction, using added energy. Freezing becomes more likely when there is oversupply or inertia in bringing fresh product to market due to over-production or policy obstacles.

### **What is the added water burden of indoor cultivation?**

Conventional wisdom is that less direct irrigation water is needed for indoor cultivation, thanks to reduced evaporation. However—and of particular relevance to the many drought-stricken parts of the country—the massive amounts of water steadily evaporated from dams and cooling towers while producing the electricity destined for indoor cultivation facilities vastly exceeds the direct agricultural water needed to grow outdoors. Based on a rule-of-thumb of one gallon of water per plant per day and the water intensity of US average electricity production at the electricity intensities of Mills (2012) and seven liters of cooling water per kilowatt-hour (per Torcellini *et al.*, 2003), indoor cultivation indirectly consumes about 18-times as much water (~1300 gallons per plant) as the amount used for direct irrigation. Amounts will vary locally depending on practices and electric generation mix in the grid. Ironically, the most water-intensive mode of electricity production is otherwise environmentally lower-impact hydroelectric power. Meanwhile, the greenhouse-gas emissions associated with the electricity used to power indoor grows are fueling future droughts.

### **How much energy and emissions are embodied in inputs, equipment, and facilities used for cultivation?**

The energy use in making soils (or single-use growing media), soil amendments, and pesticides for cannabis production has not been quantified. Nor has that for constructing facilities and the mechanical equipment that goes into them. Soils or other growing media are typically discarded after each indoor growing cycle, making this an ongoing stream of solid waste and embodied energy. As an illustration, we estimate that the mineral wool often used as a growing media in hydroponic indoor cannabis-cultivation operations increases the overall carbon footprint of the final cannabis product by approximately 5 to 11%, depending on cultivation practices (and likely more given that it is manufactured in areas with substantially higher electricity-related greenhouse-gas emissions than those assumed here).<sup>17</sup> In another example, peat that is mined as a soil amendment destroys an important carbon sink in the environment. Meanwhile, agricultural activities of all kinds consume about a billion pounds of plastic, a petrochemical product, annually in the United States alone (Grossman 2015).

---

<sup>17</sup> Per Mills (2012), the grid-based electricity related emissions of CO<sub>2</sub> are 8.1 kg CO<sub>2</sub> per square foot for each indoor cannabis growth cycle. Per Bribian *et al.*, (2010), the lifecycle emissions of mineral wool are 1.511 kg CO<sub>2</sub> per kilogram for average European conditions. This emissions factor depends heavily on electricity generation mix. A value of 2.736 was determined by Aivazidou (2013) for conditions in Greece (where the electric system is heavily dependent on lignite coal). Much U.S. manufacturing occurs in Mississippi and West Virginia, where electricity-related CO<sub>2</sub> emissions are much higher than U.S. averages, which, in turn, are substantially higher than European-average emissions upon which Bribian *et al.*'s analysis is based. Mineral wool usage calculations are based on specific weight of 1.8 kg per cubic foot of mineral wool (per Grodan manufacturer's specs) and a range of material use in cultivation of 0.14 to 0.34 cubic feet (0.26 to 0.61kg) per square foot of growing area per growing cycle. This yields 0.38 to 0.92 kgCO<sub>2</sub>/sf-cycle, or 5 to 11% of the energy-related emissions. This analysis generously assumes that yields are two pounds per light per cycle in industrial grow operations.

### **How much transportation energy is involved, and how can that be minimized?**

The smaller the quantity of cannabis transported the greater the per-unit transportation emissions. In the original 2012 study (Mills 2012), transportation energy amounted to about 15% of the total carbon footprint. Vertically integrated operations (with co-located production, processing, and retail) may well reduce transportation energy requirements.

### **What is the ongoing role of black-market cultivation, which escapes statistical records?**

There is a tendency to assume that with legalization “all” production shifts to a new footing. In practice black-market cultivation persists, and may well have a distinctly different energy and carbon profile than industrialized operations. Misdirected policy measures appear to be *enlarging* the black-market share of total production, which escapes regulation altogether. In California, for example, permitting has resulted in large amounts of paperwork and long periods of suspended operations. Fees in that state for a “medium” indoor facility (10,001-22,000 square feet) can be \$80,000 per year, which can discourage participation in the regulated market. NFD (2012) estimates that black-market operations are still responsible for three-quarters of the energy used nationally. Non-uniform policy among the states is a significant driver of the black market, which fosters illegal transportation to states without legalization.

### **How much energy is embodied in producing cannabis products that never reach market?**

The cannabis industry has been engaging in overproduction. Recent reports from Canada indicate extraordinary levels of overproduction, with only 4% of cannabis produced there reaching the market (McBride 2019). Technical problems during cultivation cycles (temperature excursions and mold outbreaks) can result in crop losses, and, for black market actors, interdiction also results in product not reaching the market. Product failing quality testing must be destroyed. The additional energy consumption associated with these factors has yet to be estimated but could be very significant.

## **Policy solutions**

Previously, most policymakers’ focus on the environmental impact of cannabis has been centered on outdoor cultivation, and even those efforts have been deemed highly inadequate by some observers (Carah *et al.*, 2015). The past California Lieutenant Governor’s 2015 report on the topic doesn’t once mention energy considerations (Blue Ribbon Commission on Marijuana Policy 2015).

Solutions to the problems of indoor cultivation must begin with earnest policymaker engagement. Sadly, as leading promulgators of energy R&D and policy at the national level, the U.S. Department of Energy and the U.S. Environmental Protection Agency, federal entities with decades of jurisdiction and creative work on energy efficiency through all segments of the economy, remain silent on the topic. Due to absence of legalization at the federal level, these agencies even back away from research on issues that could have significant public health and welfare implications (Plautz 2019). Moreover, vanishingly few policymakers at the state level, even in states with varying degrees of legalization, have embraced the issue. Notable exceptions



are Massachusetts and Illinois, which have taken initial steps, although the quality of the outcomes is uncertain.

Following are some key research needs in the policy sphere.

**Gather and publish more representative and useful energy data.** A start has been made on collecting measured data for actual facilities, but it is far from being representative of the market or having the resolution necessary to evaluate specific regions, cultivation practices, or facility types. It is essential to have third-party quality control and to ensure that these data are unbiased. An acute challenge here is that energy data in this industry—as for any energy-intensive industry—is regarded as highly proprietary. Producers as well as utilities are reluctant to disclose information. Lessons may be taken from the IT sector, in which there is now ample transparency of energy use in data centers and other high-tech facilities, despite prior concerns about the sensitivity of this information. In any case, raw data on energy use doesn't in and of itself identify rates of adoption of efficient technologies, best practices, or help facilities know how to improve. Action-oriented benchmarking can achieve these latter objectives (Mills 2015).

**Improve transparency.** Mandatory disclosure of total energy use as well as efficiency metrics for many types of non-residential buildings is becoming widespread nationally,<sup>18</sup> but the cannabis industry has thus far been passed over by these initiatives. Disclosure of this information could fill information voids that currently impede sound decision-making on the part of investors, energy companies, local authorities, cultivators, and consumers. More transparency regarding the role of energy expenses in business cost structures can help identify inefficiencies that foster energy waste, as well as help to develop best practices. Cultivators are typically required to report plant counts, the number of cropping cycles and the total amount harvested from each crop. Requiring cultivators to report the facility type and equipment deployed during each cropping cycle along with the aggregate energy used as well as energy per unit crop finished weight could provide additional valuable data for policy analysts.

**Create an improved consumer information environment.** Policy attention should be placed on consumer education and improved credible product labeling to enable more informed consumer choice and guard against the greenwashing that is today prevalent. Prior to distribution, producers are generally required to submit their products for testing and to make some of that information available to consumers through product labels. It would be a benefit to consumers to also have information regarding the methods used to produce the products and the associated carbon footprint. Dispensaries have a key role to play in this process and can help encourage energy efficiency by educating customers and promoting products that are produced using the most environmentally benign methods.

**Eliminate anti-competitive market distortions.** Subsidies to indoor cultivators (grants, tax credits, energy rebates, etc.) mask price signals intended to help markets function correctly. Awarding preferential electricity tariffs or cash incentives for new equipment disadvantages outdoor growers who have a vastly lower carbon footprint. Subsidies of all forms should be eliminated when they result in added energy use. Alternatively, it has been proposed that instead

---

<sup>18</sup> See <https://database.aceee.org/state/building-energy-disclosure>

of utilities providing financial incentives to “efficient” indoor growers, that they incentivize outdoor cultivators, which achieves the greatest energy savings (Davis 2019b).

**Allocate a portion of licensing fees to help address externalities.** Licensing fees for indoor operations are often higher than those for outdoor operations. This “signal” could be further improved by incorporating some fee-proportionality to energy intensity, with an appropriate portion of resulting fees reinvested in improving energy efficiency. Note that there is a tremendous loophole in the current California license fee structure: greenhouses regardless of how many supplemental lights they incorporate, are virtually exempt from indoor cultivation fees, yet, as noted above, their energy use is prodigious.

**Develop science-based product-testing standards.** To minimize unnecessary destruction of energy-intensive finished products, more effort is needed to ensure that required residue levels are realistic and in line with other consumer products such as tobacco and alcohol. Rather than requiring immediate destruction of products, quarantined products should be remediated where possible. Methods such as advanced distillation and micro-filtration have been used to remove pesticides, heavy metals and mold contaminants.

**Conduct market-relevant publicly funded R&D.** Public-sector R&D has a long and successful track record of compensating for market failures where private industry does not independently pursue technological pathways that are in the broader public interest (Mills 1995). Where there is lack of political will to mandate that all production be conducted outdoors, R&D can inform strenuous interventions to address the damage of any compromise position. These include better engineering and design tools for designers, labeling of energy using componentry, mandatory disclosure of energy use, and mandatory efficiency standards. Other promising avenues include plant genetics to minimize energy (and water) requirements, development of large-scale energy benchmarking and disclosure initiatives, impartial technology assessments, and peer-reviewed best-practice guidelines.

Where policymakers insist on subsidizing indoor growers – to the anticompetitive disadvantage of outdoor growers – the thresholds for eligibility should be uncompromising. Arguably, only “Net Zero” facilities, i.e., those that generate all energy on-site with zero-carbon methods (typically solar photovoltaic cells) should be allowed. Hundreds of net-zero non-residential buildings have been constructed around the country (NBI 2018), but there is no evidence that this has been done for cannabis production.

## Conclusions

Cannabis policy and environmental policy must be harmonized. Until then, some of the nation’s hardest-earned progress towards climate change solutions is at risk as regulators continue to ignore this industry’s mushrooming carbon footprint. Thanks to this inattention, producers have enjoyed a climate-change double standard (and lack of support) while being passed over by a host of policies and programs successfully improving energy efficiency and deploying renewable energy into virtually every other segment of the economy.

Those citing climate pollution as a reason not to legalize cannabis are missing the point: legalization is necessary—but not sufficient—for addressing the problem. Yet, if done poorly, legalization can make the problem worse. Indeed, history may judge today’s cannabis policymakers as betraying the public trust by enabling an industry with such a large carbon footprint.

Many are eager to see an industry more forthcoming about its carbon footprint and one that signals more hands-on interest in managing it and raising consumer awareness. A key factor in this process is individual consumer choice and expectations, which sends signals back to the market that ultimately help shape production choices and processes.

The continuation of indoor cultivation does not appear to be defensible on energy and environmental grounds. It can be argued that energy use can be reduced with large investments in energy efficiency or offset with renewable energy generation. However, this is an optimization of a suboptimal activity. These resources could be used more productively in other arenas where essentially zero-energy methods (e.g., outdoor cultivation, which has met humankind’s needs for thousands of years) are not available. Even with zero-net-energy indoor practices, other issues such as mercury in lighting, embodied energy in buildings and equipment, water use, and solid waste production remain concerns. Meanwhile, zero-net-energy cannabis production facilities have not been demonstrated, presumably because of the enormous area (and cost) of the required solar arrays.

Proficiency in accomplishing the unnecessary will not yield true sustainability. Myopic optimization of an activity that does not have to be conducted in the first place is not a legitimate response to the very real risks society faces from climate change. The ethical integrity of indoor cultivation—even at the greatest imaginable "stretch" levels of energy efficiency and renewable propulsion—is in question. This is a pressing issue for producers, policymakers, and consumers alike.

## References

- Alpert, Bill. 2019. “Constellation Brands Was Tired of Losing Money on Canopy Growth. Now the Marijuana Company’s CEO Is Out.” *Barrons*.
- Aivazidou Eirini. 2013. “Development of a Methodological Framework for Carbon Footprint Management in the Supply Chain: The Case of FIBRAN S.A.” Diploma Dissertation (in Greek), Aristotle University of Thessaloniki, Greece.
- Allen, Joseph G., Piers MacNaughton, Usha Satish, Suresh Santanam, Jose Vallarino, and John D. Spengler. 2015. “Associations of Cognitive Function Scores with Carbon Dioxide, Ventilation, and Volatile Organic Compound Exposures in Office Workers: A Controlled Exposure Study of Green and Conventional Office Environments.” *Environmental Health Perspectives* 124 (6): 805-812.
- Altstedter, Ari. 2017. “Where the U.S. Actually Gets its Drug Supply.” Bloomberg.

- Arnold, Jessica. 2011. "Investigation of Relationship between Cannabis Plant Strain and Mass Yield of Flower Buds." Humboldt State University Proposal.
- BC Hydro. 2016. "Letter from Greg Reimer, Executive Vice President, Transmission, Distribution & Customer Service, BC Hydro." Company news release.
- Bennett, E.A. 2017. "Extending Ethical Consumerism Theory to Semi-legal Sectors: Insights From Recreational Cannabis." *Agric. Hum. Values*. **35**, 295–317
- Bennett, E.A. 2019. "Passing on Pot: When Environmental Organizations Disengage from Political Consumerism in Highly Stigmatized Sectors." *Environmental Politics*. 28pp.
- Bennett, E.A. 2020. "Consumer Activism, Sustainable Supply Chains, and the Cannabis Market." *The Routledge Handbook of Interdisciplinary Cannabis Research*, edited by Dominic Corva and Joshua Meisel. New York, NY: Routledge.
- Blue Ribbon Commission on Marijuana Policy. 2015. "Policy Options for Regulating Marijuana in California." 93pp.
- Borrad, Hillary. 2015. "Power Needs of Pot." *The Astorian*.
- Bradsher, Keith. 2014. "Shake Up on Opium Island." *New York Times*. July 19.
- Bribian, Ignacio Zabalza, Antonio Valero Capilla, and Alfonso Aranda Uson. 2010. "Life Cycle Assessment of Building Materials: Comparative Analysis of Energy and Environmental Impacts and Evaluation of the Eco-efficiency Improvement Potential." *Building and Environment*. 46:1133-1140.
- Bureau of Cannabis Control. 2017. "Commercial Cannabis Business Licensing Program Regulations: Initial Study/Negative Declaration." 491pp.
- California Department of Food and Agriculture. 2017. "CalCannabis Cultivation Licensing: Final Program Environmental Impact Report." 534pp.
- California Energy Commission. 2019a. "Electricity from Wind Energy: Statistics and Data."
- California Energy Commission. 2019b. "First Utility-Sponsored Stakeholder Meeting: Covered Processes (Controlled Environmental Horticulture): 2022 TITLE 24 CODE CYCLE, PART 6: Statewide CASE Team: September 19, 2019."
- Capparella, Josh. 2013. "Energy Benchmarking in the Pharmaceutical Industry." *Pharmaceutical Engineering* 33(5):1-6.
- Jennifer K. Carah Jeanette K. Howard, Sally E. Thompson, Anne G. Short Gianotti, Scott D. Bauer, Stephanie M. Carlson, David N. Dralle, Mourad W. Gabriel, Lisa L. Hulette, Brian J. Johnson, Curtis A. Knight, Sarah J. Kupferberg, Stefanie L. Martin, Rosamond L. Naylor, Mary E. Power. 2015. "High Time for Conservation: Adding the Environment to the Debate on Marijuana Liberalization." *BioScience* 65(8):822-829.

- Caruso, Rosalie.V., Richard J. O'Connor, W. Edryd Stephens, K. Michael Cummings, and Geoffrey T. Fong. 2014. "Toxic Metal Concentrations in Cigarettes Obtained from U.S. Smokers in 2009: Results from the International Tobacco Control (ITC) United States Survey Cohort." *International Journal of Environmental Research and Public Health* 11(1): 202–217. doi: 10.3390/ijerph110100202
- CBC. 2019a. "Windsor-Essex Greenhouses Will Need More Power Than Currently Available." Canadian Broadcasting Corporation, *CBC News*, January 5.
- CBC. 2019b. "Solar Pot: Alberta Cannabis Producer Unveils Rooftop Solar System." Canadian Broadcasting Corporation, *CBC News*, November 12.
- County of Boulder. 2018. "Boulder County Energy Impact Offset Fund (BCEIO) Demand Side Management Study." City of Boulder, Colorado. 41pp.
- Daniels, Melissa. 2019. "A Model of Sustainable Commerce: Carbon Footprint, Grid Concerns Push SoCal Weed Industry To Be More Green." *Desert Sun*. October 10.
- Davis, Fred. 2019a. Letter to CannabisCommission@State.MA.US on draft Massachusetts energy standards for indoor cannabis cultivation. August 15.
- Davis, Fred. 2019b. "Energy & Environment Working Group." Letter to Commissioner Kay Doyle, Massachusetts Cannabis Control Commission, and Alex Pollard, Massachusetts Department of Energy Resources. January 24.
- Denver Public Health & Environment. 2018. "Cannabis Environmental Best Management Practices." 66pp.
- Easton, Stephen T., 2004. "Marijuana Growth in British Columbia." Simon Fraser University, 78 pp.
- Fire Chiefs Association of British Columbia. 2008. "Eliminating Residential Hazards Associated with Marijuana Grow Operations and The Regulation of Hydroponics Equipment, British Columbia's Public Safety Electrical Fire and Safety Initiative." 108pp.
- Gettman, John, 2006. "Marijuana Production in the United States." 29pp.
- Grossman, Elizabeth. 2015. "How Can Agriculture Solve its \$5.87 Billion Plastic Problem?" *GreenBiz*, April 6.
- Hood, Grace. 2018. "Nearly 4 Percent of Denver's Electricity Is Now Devoted to Marijuana." Colorado Public Radio.
- Johnson, Julie. 2019. "Sonoma County Begins to Process Backlog of Applications for Outdoor Cannabis Farms." *Press Democrat*. June 21.
- San Francisco Bay Guardian*. 2011. "Green Buds: Environmental Cost of Growing Indoors Is Luring the Marijuana Industry Back into The Sunshine." pp. 14-18. August 11.
- Jourabchi, Massoud. 2014. "Electrical Load Impacts of Indoor Commercial Cannabis Production." Northwest Power and Conservation Council Memorandum. 11 pages.

- Kinney, Larry, John Huston, Michael Stiles, and Gardner Clute. 2012. "Energy-Efficient Greenhouse Breakthrough," *Proceedings of the 2012 ACEEE Summer Study on Energy Efficiency in Buildings*, pp. 13-176 to 13-188.
- Leichliter, Katie, Dave Bisbee, and Matt McGregor. 2018. "Amplified Farms 2017 Indoor Horticulture Lighting Study." Prepared for the Sacramento Municipal Utility District. 36pp.
- ERA Economics. 2017. "Economic Impact Analysis of CalCannabis Cultivation Licensing Program Regulation." 113pp.
- Fisk, William J., Usha Satish, Mark J. Mendell, Toshifumi Hotchi, and Douglas Sullivan. 2013. "Is CO<sub>2</sub> an Indoor Pollutant? Higher Levels of CO<sub>2</sub> May Diminish Decision Making Performance." Lawrence Berkeley National Laboratory Report No. 6148E.
- Mapes, Lynda V. 2018. "Changes to Dams on Columbia, Snake Rivers to Benefit Salmon, Hydropower and Orcas." *Seattle Times*, December 18.
- Maschke, Alena. 2018. "Lawsuit Could Protect Valley Weed Investors." *The Desert Sun*. January 26.
- McBride, Stephen. 2019. "Aurora Cannabis Is Dumping Its Pot, Which May Be A Sign It's All Over." *Forbes*. October 21.
- Mills, Evan. 1995. "From the Lab to the Marketplace: Government's Role in R&D and Market Transformation for Energy Efficiency in Buildings." *Proceedings of the ECEEE Summer Study on Energy Efficiency in Buildings*, Mandileu, France. Stockholm: European Council for an Energy-Efficient Economy .
- Mills, Evan. 2012. "The Carbon Footprint of Indoor marijuana Production." *Energy Policy* 46:58–67
- Mills, Evan. 2015. "Action-oriented Benchmarking for Non-residential Buildings." *Proceedings of the IEEE*, 104(4):697-712.
- Mills, Evan. 2016. "A Low Point for High Times." Letter to the Editor, *High Times*, April 4.
- Mills, Evan. 2017. "Policymakers' Primer on Addressing the Carbon Footprint of Marijuana Production." Council of State Governments, Las Vegas, December 14.
- Mills, Evan. 2018. "Not-so-Green Greenhouses for Marijuana Hyper-Cultivation" Energy Associates. 5pp.
- Mills, Evan. 2019. "California: A Cannabis-climate Train Wreck in Progress." <https://www.linkedin.com/pulse/california-cannabis-climate-train-wreck-progress-evan-mills/>
- NBI. 2018. "Getting to Zero Status Update and List of Zero Energy Projects." New Buildings Institute, 33pp.

- Nelson, Jacob A. and Bruce Bugbee. 2014. "Economic Analysis of Greenhouse Lighting: Light Diodes vs. High Intensity Discharge Fixtures." *PLoS ONE* 9(6).
- NFD. 2018. "The 2018 Cannabis Energy Report." New Frontier Data. 63pp.
- Northwest Power and Conservation Council. 2016. "Seventh Power Plan." Prepared for the Independent Electricity System Operator, Toronto, Canada. 170pp.
- PG&E. 2017. "Agricultural Cannabis Growers Now Eligible for PG&E Ag Rate and Programs." Pacific Gas and Electric Company, News Release. March 1.
- Pacific Power. 2015. "Marijuana Growing Legal in Oregon and Washington, but Safety, Electric Capacity Issues Remain." Website.
- Plautz, Jason. 2019. "The Growth of Legal Pot Farms Drives Smog Worries." *Science* 363(6425):329.
- Pocock, Tessa. 2015. "Tuning the Spectrum for Plant Growth." Presentation. Rensselaer Polytechnic Institute.
- Posterity Group. 2019. "Greenhouse Energy Profile Study."
- Pols, Mary. 2017. "Did You Know Marijuana is America's Most Energy-intensive Crop?" *Press Herald*. <https://www.pressherald.com/2017/01/15/whats-the-most-energy-intensive-crop-in-america/>
- Reuters*. 2015. "Fire Guts Seattle's First Legal Marijuana Growing Operation." April 8.
- Riquelmy, Alan. 2016. "Nevada County Marijuana: Supes Pass Outdoor Grow Ban in 4-to-1 Vote." *The Union*. January 15.
- Rosenthal, Ed. 2010. "Marijuana Grower's Handbook: Your Complete Guide for Medical and Personal Marijuana Cultivation."
- Schenker, Marc and Chelsea Eastman Langer. 2020. "Health and Safety of Cannabis Workers." *The Routledge Handbook of Interdisciplinary Cannabis Research*, edited by Dominic Corva and Joshua Meisel. New York, NY: Routledge.
- Schroyer, John. and Eli McVey. 2019. "Chart: Most California Municipalities Ban Commercial Cannabis Activity." *Marijuana Business Daily*, February 18.
- Silvaggio, T. 2020. "The Environmental Impact of Cannabis Liberalization: Lessons from California." *The Routledge Handbook of Interdisciplinary Cannabis Research*, edited by Dominic Corva and Joshua Meisel. New York, NY: Routledge.
- Simmons, Heidi. 2019. "Cannabis Commerce in the Coachella Valley." *Coachella Valley Weekly*. April 17.

- The Arcata Eye*. 2012. “Measure I, The Grow House Electricity Tax: City Council Resolution, Municipal Code Section, City Attorney Analysis and Ballot Argument In Favor – August 3, 2012.”
- Thill, David. 2019. “Illinois Marijuana Growers Will Face Energy Efficiency and Reporting Rules.” *Energy News Network*. September 16.
- Torcellini, Paul, Nicholas Long, and Ronald Judkoff. 2003. "Consumptive Water Use for U.S. Power Production." National Renewable Energy Lab, U.S. Department of Energy. 18pp.
- University of Massachusetts. 2017. “Replace Hydropower Dams to Save the Southern Resident Orca Whale Population!” *Debating Science*.
- USGS. 2019. “The U.S. Wind Turbine Database.” <https://eerscmap.usgs.gov/uswtodb/>
- Vitiello, Michael. 2016. “Legalizing Marijuana and Abating Environmental Harm: An Overblown Promise?” *U.C. Davis Law Review*. 50:773-812.
- Walton, Robert. 2015. “Marijuana Grow Houses May Cause 3% Demand Spike for Seattle Utility.” *Utility Drive*.

## **Author Biographies**

Evan Mills, Ph.D. is a California-based analyst focusing on energy and climate change topics. He is a principal at Energy Associates, under the auspice of which this work was done. He is a retired Senior Scientist from the U.S. Department of Energy’s Lawrence Berkeley National Laboratory (currently a research affiliate), a research affiliate with U.C. Berkeley’s Energy and Resources Group, and a member of the United Nations Intergovernmental Panel on Climate Change. He authored the definitive and widely cited peer-reviewed analysis of energy use associated with indoor cannabis cultivation in 2012. More information at [evan-mills.com](http://evan-mills.com). Email: [evanmills1@gmail.com](mailto:evanmills1@gmail.com)

Scott Zeramby is a subject-matter expert who owns and operates several businesses that primarily serve the cannabis industry. In his work as a cannabis industry consultant, he collaborated in the design of a 91,000 ft<sup>2</sup> state-of-the-art cannabis production facility in Carbondale, Illinois. He has presented to both national and international audiences on a number of cannabis-related subjects including: cultivation processes, public policy, economics and energy use.