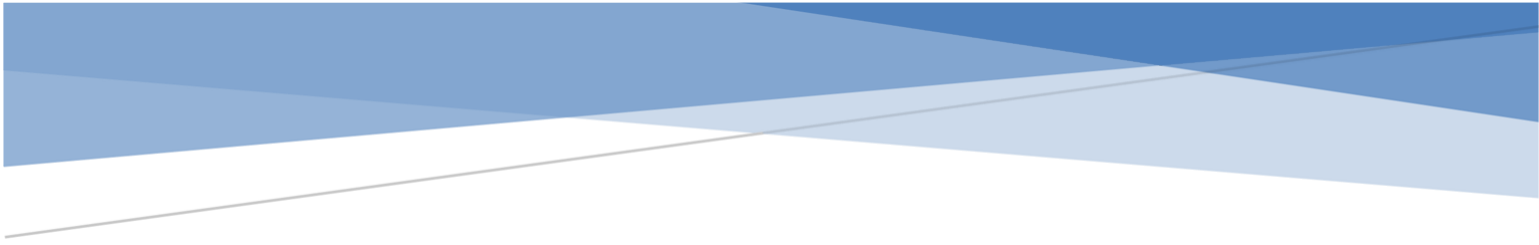


DOCKETED

| | |
|-------------------------|---|
| Docket Number: | 20-SPPE-01 |
| Project Title: | Great Oaks South Backup Generating Facility Small Power Plant Exemption |
| TN #: | 233875 |
| Document Title: | SV1 Supplemental Response to DR 58 - GOSBGF |
| Description: | N/A |
| Filer: | Scott Galati |
| Organization: | DayZenLLC |
| Submitter Role: | Applicant Representative |
| Submission Date: | 7/15/2020 9:35:24 AM |
| Docketed Date: | 7/15/2020 |



SUPPLEMENTAL RESPONSES TO CEC STAFF DATA REQUEST SET 2 (DR - 58)

Great Oaks South Backup Generating Facility (19-SPPE-
03)

SUBMITTED TO: CALIFORNIA ENERGY COMMISSION

SUBMITTED BY: **SV1, LLC**

July 2020



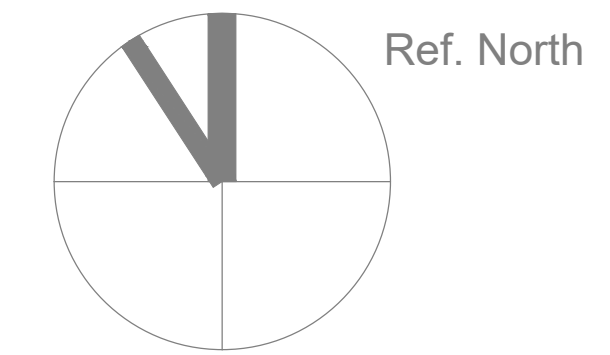
The Attached drawings show the utility line from the PG&E Santa Teresa Substation and on-site one-line diagrams as requested by Data Request 58.

ELECTRICAL DRAWING INDEX

| SHEET NO. | TITLE |
|-----------|--|
| E001 | SITE POWER PLAN |
| E002 | PARTIAL SITE POWER PLAN |
| E010 | PARTIAL SITE LIGHTING PLAN - ILLUMINANCE CALCULATION |
| E011 | PARTIAL SITE LIGHTING PLAN - ILLUMINANCE CALCULATION |
| E012 | PARTIAL SITE LIGHTING PLAN - ILLUMINANCE DOCUMENTATION |
| E100 | OVERALL SITE MV SINGLE LINE DIAGRAM |
| E101 | SV12 NORTH SINGLE LINE DIAGRAM |
| E102 | SV12 SOUTH SINGLE LINE DIAGRAM |
| E103 | SV18 NORTH SINGLE LINE DIAGRAM |
| E104 | SV18 SOUTH SINGLE LINE DIAGRAM |
| E105 | SV19 NORTH SINGLE LINE DIAGRAM |
| E106 | SV19 SOUTH SINGLE LINE DIAGRAM |

GENERAL NOTES

G1. CONTRACTOR TO PROVIDE CONDUIT, CONDUCTORS BY PG&E. 33 MW PLANNED FOR EACH BUILDING SITE.



(2) 6" CONDUITS, SEE DETAIL FOR ADDITIONAL INFORMATION



(4) 6" CONDUITS, SEE DETAIL FOR ADDITIONAL INFORMATION

1 SITE UTILITY DISTRIBUTION
NOT TO SCALE

1
E002

OWNER



EQUINIX

ARCHITECT

SHEEHAN NAGLE HARTRAY ARCHITECTS
130 E Randolph St
Suite 3100
Chicago, IL 60601
o: 312.633.2900 CHICAGO | LONDON

CIVIL ENGINEER

R+G RUTH AND GOING, INC.
Civil Engineering Land Surveying
2216 THE ALAMEDA SANTA CLARA, CA 95050
(408) 236-2400 FAX: (408) 236-2410

LANDSCAPE DESIGN

StringhamDesign
landscape architectural
RUSSELL STRINGHAM
1796 GUNSTON WAY SAN JOSE CA 95124
PHONE 408 886 4089 LIC.#3091

STRUCTURAL ENGINEER

PARADIGM structural engineers
639 Front Street, 4th Floor
San Francisco, CA 94111
o: 415.362.8944

MECHANICAL/PLUMBING/FP ENGINEER

Southland Industries
22340 Dresden Street, Suite 177
Dulles, VA 20166
Office: 703.834.5570
Fax: 703.834.5572

REDWOOD ELECTRIC GROUP
2775 Northwestern Parkway Santa Clara, CA 94402

| NO | DESCRIPTION | DATE |
|----|--------------------------------|------------|
| | SPECIAL USE PERMIT AMENDMENT 1 | 05/01/2020 |
| | SPECIAL USE PERMIT AMENDMENT | 01/10/2020 |
| | DRAWING ISSUES | |

PROJECT:

SV12/SV18/SV19
SPA15-031-01

GREAT OAKS BLVD
SAN JOSE, CA 95119

DWG. TITLE

SITE POWER PLAN

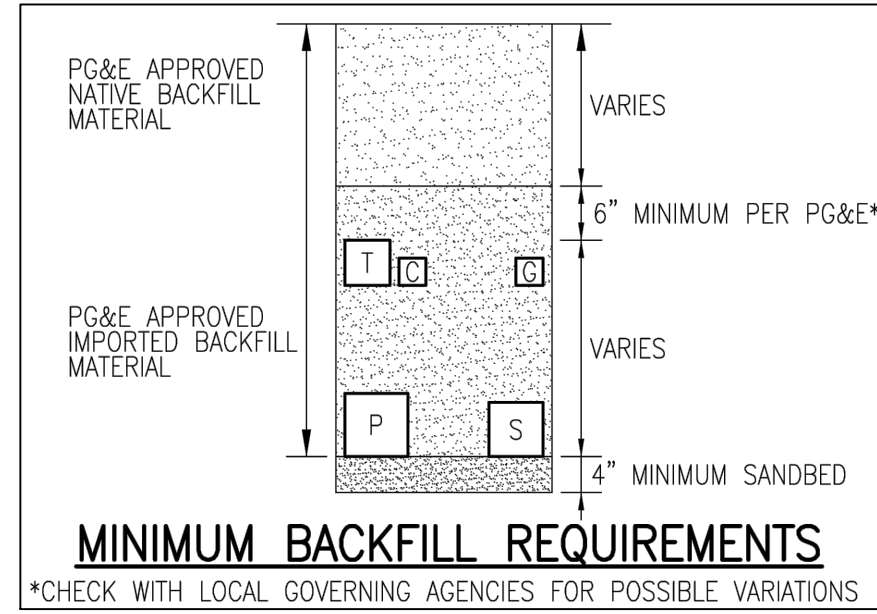
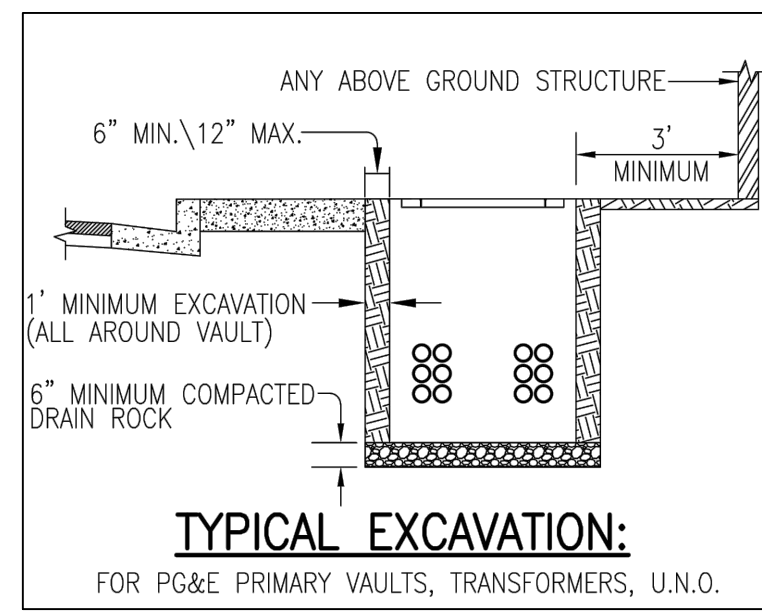
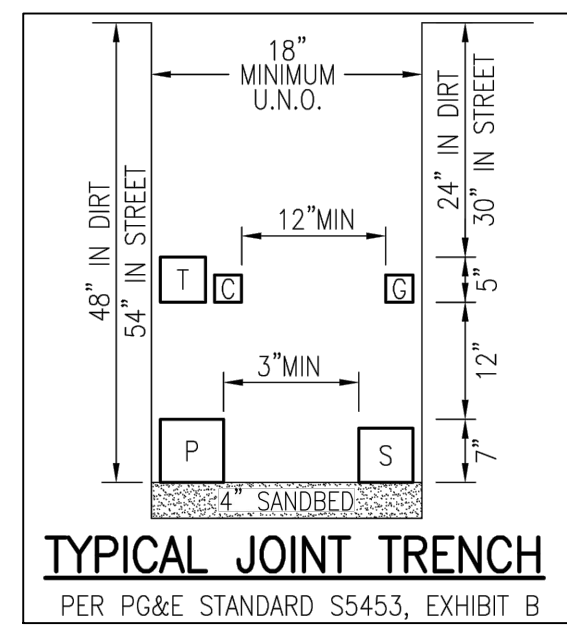
PROJECT NO: Project Number

DWG. NO:

DATE: 01/10/2020

SCALE:

E001

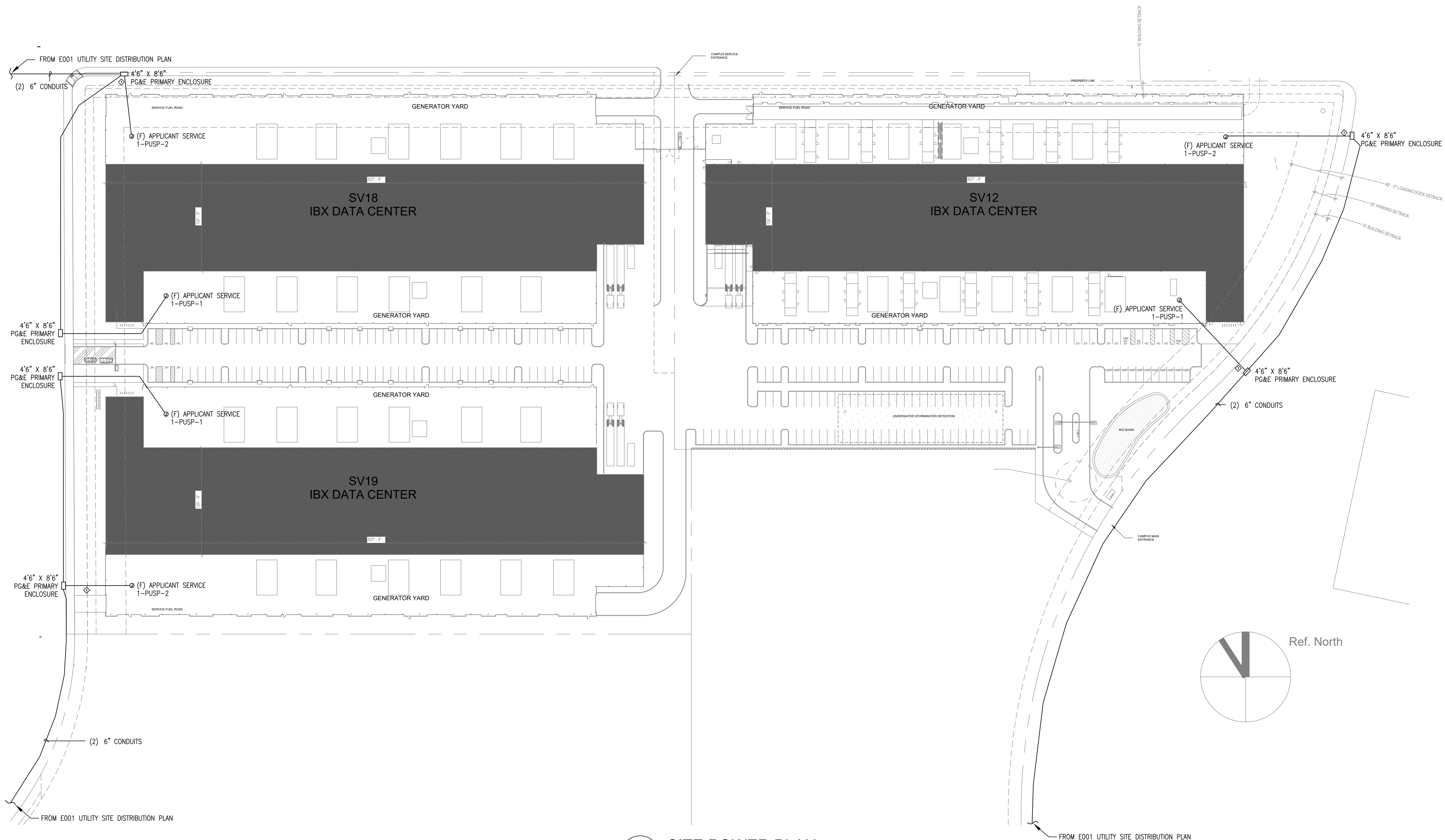


GENERAL NOTES

G1. CONTRACTOR TO PROVIDE CONDUIT, CONDUCTORS BY PG&E. 33 MW PLANNED FOR EACH BUILDING SITE.

SHEET NOTES

◇ APPLICANT TO EXPOSE PG&E PRIMARY AND INSTALL CONDUIT FROM PRIMARY TO APPLICANT'S ENCLOSURE.



1 SITE POWER PLAN
SCALE 1" = 60'-0"

OWNER

ARCHITECT
SHEEHAN NAGLE HARTRAY ARCHITECTS

130 E Randolph St
Suite 3100
Chicago, IL 60601
o: 312.633.2900 CHICAGO | LONDON

CIVIL ENGINEER

R+G RUTH AND GOING, INC.
Civil Engineering Land Surveying
2216 THE ALAMEDA SANTA CLARA, CA 95050
(408) 236-2400 FAX: (408) 236-2410

LANDSCAPE DESIGN

StringhamDesign
landscape architectural

RUSSELL STRINGHAM
1796 GUNSTON WAY SAN JOSE CA 95124
PHONE 408 886 4089 LIC.#3091

STRUCTURAL ENGINEER

639 Front Street, 4th Floor
San Francisco, CA 94111
o: 415.362.8944

MECHANICAL/PLUMBING/FP ENGINEER

Southland Industries
22340 Dresden Street, Suite 177
Dulles, VA 20166
Office: 703.834.5570
Fax: 703.834.5572

2775 Northwestern Parkway Santa Clara, CA 94402

| NO | DESCRIPTION | DATE |
|----|--------------------------------|------------|
| | SPECIAL USE PERMIT AMENDMENT 1 | 05/01/2020 |
| | SPECIAL USE PERMIT AMENDMENT | 01/10/2020 |

DRAWING ISSUES

PROJECT:

SV12/SV18/SV19
SPA15-031-01

GREAT OAKS BLVD
SAN JOSE, CA 95119

DWG. TITLE

PARTIAL SITE POWER PLAN

PROJECT NO: Project Number DWG. NO:

DATE: 01/10/2020

SCALE: **E002**

F:\0-Dwg\2020\20116-Equinox-SV12.dwg, 5/21/2020 2:00:20 PM, AutoCAD PDF (General Documentation).pc3, REDWOOD ELECTRIC GROUP, Landis, Wilson

F:\0-Dwg\2020\20116-Equinix-SV12.dwg, 5/21/2020 1:59:23 PM, AutoCAD PDF (General Documentation).pc3, REDWOOD ELECTRIC GROUP, Landis, Wilson

GENERAL NOTES

G1. ALL LUMINAIRES SHALL BE CONTROLLED VIA OCCUPANCY SENSOR AND DIM 50% WHILE VACANCY IS DETECTED. AN ASTRONOMICAL TIMELOCK SHALL SHUT-OFF ALL LUMINAIRE WHILE DAYLIGHT IS AVAILABLE.

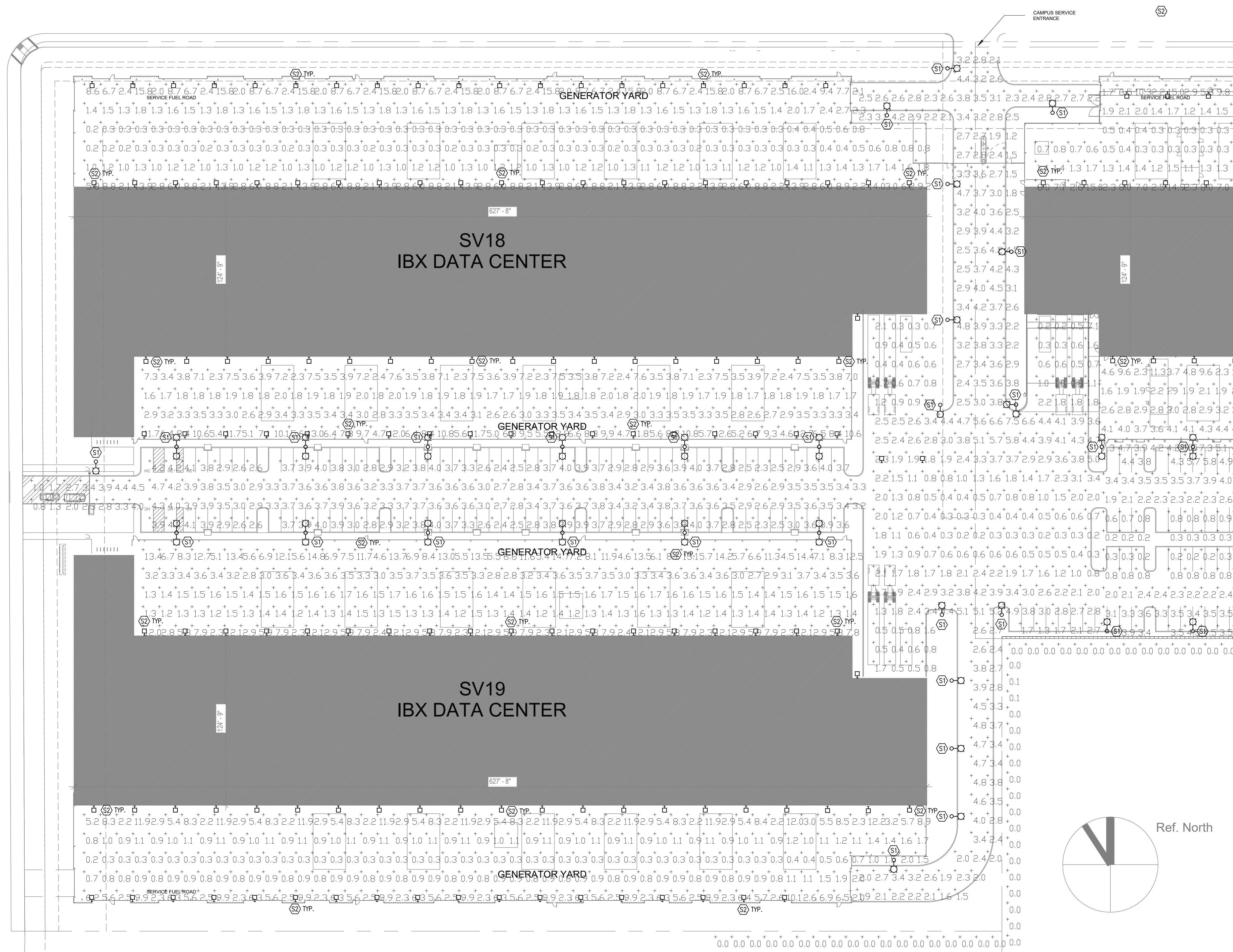
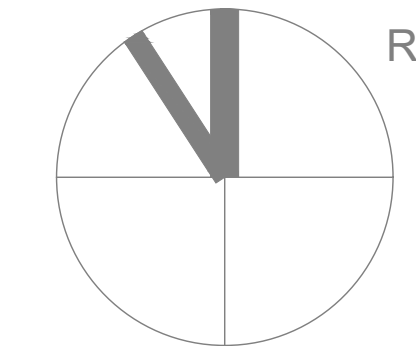
SHEET NOTES

NOTE: NOT ALL SHEET NOTES BELOW MAY BE USED ON THIS SHEET

LEGEND

- NEW BUILDING
- PROPERTY LINE
- SETBACK LINE
- UNDERGROUND DETENTION BASIN
- SCOPE OF ADJUSTMENTS
- FIRE ACCESS ROAD
- REVISIONS

Ref. North



1 SITE LIGHTING & PHOTOMETRIC - WEST
SCALE 1" = 40'-0"

OWNER



EQUINIX

ARCHITECT
SHEEHAN NAGLE HARTRAY ARCHITECTS
 130 E Randolph St
 Suite 3100
 Chicago, IL 60601
 o: 312.633.2900 CHICAGO | LONDON

CIVIL ENGINEER
R+G RUTH AND GOING, INC.
 Civil Engineering Land Surveying
 Planning
 2216 THE ALAMEDA SANTA CLARA, CA 95050
 (408) 236-2400 FAX: (408) 236-2410

LANDSCAPE DESIGN
StringhamDesign
 landscape architectural
 RUSSELL STRINGHAM
 1796 GUNSTON WAY SAN JOSE CA 95124
 PHONE 408 886 4089 LIC.#3091

STRUCTURAL ENGINEER
PARADIGM structural engineers
 639 Front Street, 4th Floor
 San Francisco, CA 94111
 o: 415.362.8944

MECHANICAL/PLUMBING/FP ENGINEER
 Southland Industries
 22340 Dresden Street, Suite 177
 Dulles, VA 20166
 Office: 703.834.5570
 Fax: 703.834.5572

REDWOOD ELECTRIC GROUP
 2775 Northwestern Parkway Santa Clara, CA 94402

| NO | DESCRIPTION | DATE |
|----|--------------------------------|------------|
| | SPECIAL USE PERMIT AMENDMENT 1 | 05/01/2020 |
| | SPECIAL USE PERMIT AMENDMENT | 01/10/2020 |

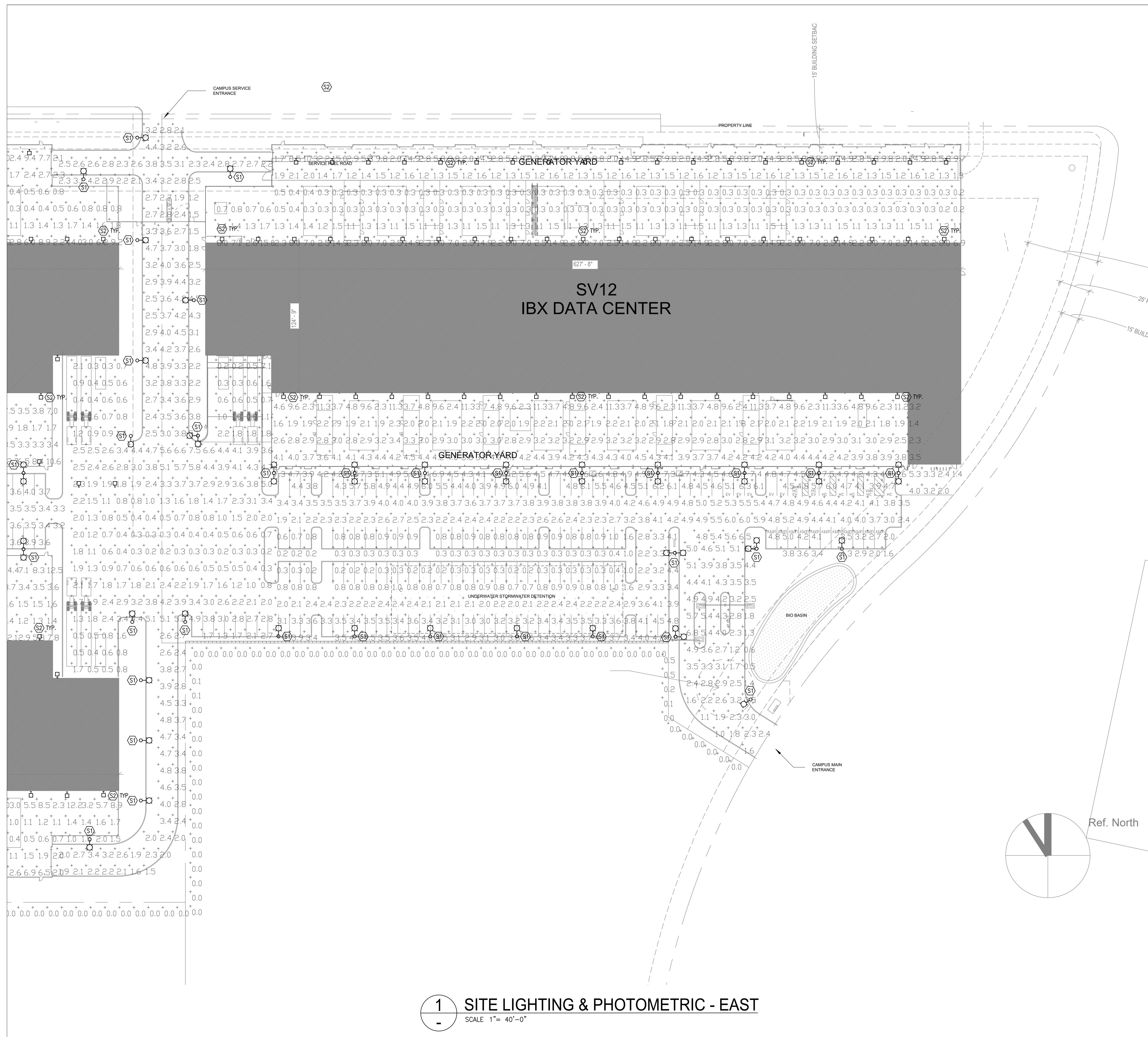
DRAWING ISSUES

PROJECT:
 SV12/SV18/SV19
 SPA15-031-01

**GREAT OAKS BLVD
 SAN JOSE, CA 95119**

DWG. TITLE
 PARTIAL SITE LIGHTING PLAN
 ILLUMINANCE CALCULATION

PROJECT NO: Project Number **DWG. NO:**
 DATE: 01/10/2020
 SCALE: **E010**



GENERAL NOTES

G1. ALL LUMINAIRES SHALL BE CONTROLLED VIA OCCUPANCY SENSOR AND DIM 50% WHILE VACANCY IS DETECTED. AN ASTRONOMICAL TIMELOCK SHALL SHUT-OFF ALL LUMINAIRE WHILE DAYLIGHT IS AVAILABLE.


SHEET NOTES

NOTE: NOT ALL SHEET NOTES BELOW MAY BE USED ON THIS SHEET

LEGEND

- NEW BUILDING
- PROPERTY LINE
- SETBACK LINE
- UNDERGROUND DETENTION BASIN
- SCOPE OF ADJUSTMENTS
- FIRE ACCESS ROAD
- REVISIONS

OWNER




EQUINIX

ARCHITECT
SHEEHAN NAGLE HARTRAY ARCHITECTS
 130 E Randolph St
 Suite 3100
 Chicago, IL 60601
 o: 312.633.2900
 CHICAGO | LONDON

CIVIL ENGINEER
R G RUTH AND GOING, INC.
 Civil Engineering Land Surveying
 Planning
 2216 THE ALAMEDA SANTA CLARA, CA 95050
 (408) 235-2400 FAX (408) 236-2410

LANDSCAPE DESIGN
StringhamDesign
 landscape architectural
 RUSSELL STRINGHAM
 1796 GUNSTON WAY SAN JOSE CA 95124
 PHONE 408 886 4089
 LIC.#3091

STRUCTURAL ENGINEER
PARADIGM structural engineers
 639 Front Street, 4th Floor
 San Francisco, CA 94111
 o: 415.362.8944

MECHANICAL/PLUMBING/FP ENGINEER

 Southland Industries
 22340 Dresden Street, Suite 177
 Dulles, VA 20166
 Office: 703.834.5570
 Fax: 703.834.5572

REDWOOD ELECTRIC GROUP
 2775 Northwestern Parkway Santa Clara, CA 94402

| NO | DESCRIPTION | DATE |
|----|--------------------------------|------------|
| | SPECIAL USE PERMIT AMENDMENT 1 | 05/01/2020 |
| | SPECIAL USE PERMIT AMENDMENT | 01/10/2020 |

DRAWING ISSUES

PROJECT:
SV12/SV18/SV19
 SPA15-031-01

GREAT OAKS BLVD
SAN JOSE, CA 95119

DWG. TITLE
PARTIAL SITE LIGHTING PLAN
ILLUMINANCE CALCULATION

| | |
|----------------------------|-------------|
| PROJECT NO: Project Number | DWG. NO: |
| DATE: 01/10/2020 | E011 |
| SCALE: | |

F:\0-Dwg\2020\0116 Equinix SV12.dwg, 5/21/2020 1:59:35 PM, AutoCAD PDF (General Documentation).pc3, REDWOOD ELECTRIC GROUP, Landis, Wilson

PHOTOMETRIC STATISTICS:

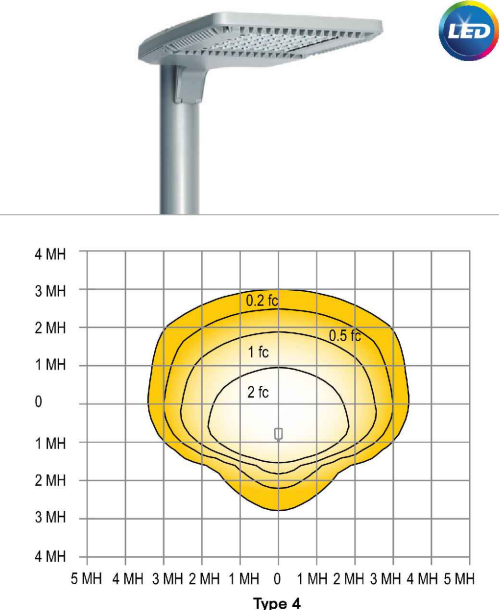
| Description | Symbol | Avg | Max | Min | Max/Min | Avg/Min |
|------------------------|--------|-----|------|-----|---------|---------|
| Beyond Property Line | + | 0.0 | 0.5 | 0.0 | N/A | N/A |
| Gate Entrance | + | 3.3 | 6.8 | 0.9 | 13.61 | 6.61 |
| SV-12 Driveway | + | 2.3 | 7.5 | 0.2 | 37.51 | 11.51 |
| SV-12 N Generator Yard | + | 2.9 | 15.0 | 0.2 | 75.01 | 14.51 |
| SV-12 Parking Lot | + | 2.9 | 6.5 | 0.2 | 32.51 | 14.51 |
| SV-12 S Generator Yard | + | 4.1 | 11.3 | 1.4 | 8.11 | 2.91 |
| SV-18 Driveway | + | 2.7 | 4.5 | 0.8 | 5.61 | 3.41 |
| SV-18 N Generator Yard | + | 2.9 | 16.0 | 0.2 | 80.01 | 14.51 |
| SV-18 Parking Lot | + | 3.4 | 4.7 | 2.3 | 2.91 | 1.51 |
| SV-18 S Generator Yard | + | 4.6 | 13.0 | 1.6 | 8.11 | 2.91 |
| SV-19 N Generator Yard | + | 4.3 | 14.8 | 1.2 | 12.31 | 3.61 |
| SV-19 S Generator Yard | + | 2.8 | 12.2 | 0.2 | 61.01 | 14.01 |

EXTERIOR FIXTURE SCHEDULE:

| TYPE | INPUT WATTS | DESCRIPTION | VOLT | LAMPS | MANUFACTURER | FINISH | REMARKS |
|------|-------------|---|------|-------------------------|--|------------------|--|
| S1 | 102 WATTS | OUTDOOR 20' POLE MOUNTED LUMINAIRE TYPE III | UNIV | LED 4000K 12,500 LUMENS | HEAD: LITHONIA DSX1 LED P3 40K T3M MVOLT RPA PER PIRH DNAXD DLL127F1.5JK POLE: 20' KW SSP12-4.0-11-BRZ-DM10-BC-LAB (INCLUDED) ALRP 3/4" X 18" X4" (INCLUDED) | NATURAL ALUMINUM | BUG - B1 U0 G0 (MOTION SENSOR CONTROL) |
| S2 | 26 WATTS | OUTDOOR WALL SCONCE SURFACE MOUNT | UNIV | LED 5000K 3,400 LUMENS | RAB WPLED 26 5000K NO SENSOR BRONZE NO PHOTO NO DIM | BRONZE | BUG - B1 U0 G0 |



Gardco EcoForm Gen-2 combines economy with performance in an LED area luminaire. Capable of delivering up to 26,400 lumens or more in a compact, low profile LED luminaire, EcoForm offers a new level of customer value. EcoForm features an innovative retrofit arm kit, simplifying site conversions to LED by eliminating the need to drill additional holes in most existing poles. Integral control systems available for further energy savings. Includes Service Tag, our innovative way to provide assistance throughout the life of the product.



Ordering guide example: ECF-S-64L-900-NW-G2-AR-S-120-HIS-MGY

| Profile | Number of LEDs | Drive Current | LED Color - Generation | Mounting | Distribution | Voltage | Options | Blending controls | Action sensing lens | Photo-sensing | Electrical | Luminaire | Finish |
|---------|-----------------|---------------|---------------------------------|-------------------------|-----------------|---------|--|--------------------------|-----------------------|------------------------------|---------------------|-------------------|--------|
| ECF-S | 32L (2 modules) | 530mA (100mA) | WW-G2 3000K, 70CRI Generation 2 | AR Arm Mount (standard) | Type 2 20' Pole | 120V | DD 0-10V External dimming by other's control | IMB3 Integral with 316st | PCB Photocell Backlit | F1 Single (0.0, 0.7, 34VAC) | Square Pole Adapter | Textured BK Black | |
| | 48L (4 modules) | 900mA (100mA) | WW-G2 4000K, 70CRI Generation 2 | AR Arm Mount (standard) | Type 2 20' Pole | 208V | DD 0-10V External dimming by other's control | IMB3 Integral with 316st | PCB Photocell Backlit | F2 Double (0.0, 240, 480VAC) | Square Pole Adapter | Textured BK Black | |
| | 64L (8 modules) | 900mA (100mA) | WW-G2 4000K, 70CRI Generation 2 | AR Arm Mount (standard) | Type 2 20' Pole | 277V | DD 0-10V External dimming by other's control | IMB3 Integral with 316st | PCB Photocell Backlit | F3 Single (0.0, 277, 34VAC) | Square Pole Adapter | Textured BK Black | |

- BL-IMB3/7 equipped with out-boarded sensor housing when voltage is 120V (240V-480V)
- Mounts to a 4" round pole with adapter included for square poles.
- Limited to a maximum of 45 degrees aiming above horizontal.
- Not available with other dimming control options.
- Not available with motion sensor.
- Not available with photocell.
- Available only in 120 or 277V.
- Not available in 347 or 480V
- Must specify input voltage.
- Dimming will not be connected to NEMA receptacle if ordering with other control options.
- Not available in 480V. Order photocell separately with TLRS5/7.
- Not available with 9' and WS. RPA's provided with black finish standard.
- HIS not available with Type 5 and SW optics.
- Not available with DD, DCC, and FAWSS dimming control options.
- Not available with DD, DCC, FAWSS and LLC dimming control options.
- Must specify a motion sensor lens.

TYPE S1

TYPE S2

GENERAL NOTES

- G1. ALL LUMINAIRES SHALL BE CONTROLLED VIA OCCUPANCY SENSOR AND DIM 50% WHILE VACANCY IS DETECTED. AN ASTRONOMICAL TIMECLOCK SHALL SHUT-OFF ALL LUMINAIRE WHILE DAYLIGHT IS AVAILABLE.

SHEET NOTES

NOTE: NOT ALL SHEET NOTES BELOW MAY BE USED ON THIS SHEET

LEGEND

OWNER

EQUINIX

ARCHITECT
SHEEHAN NAGLE HARTRAY ARCHITECTS

130 E Randolph St
Suite 3100
Chicago, IL 60601
o: 312.633.2900
CHICAGO | LONDON

CIVIL ENGINEER

R+G RUTH AND GOING, INC.

Civil Engineering Land Surveying
Planning

2216 THE ALAMEDA SANTA CLARA, CA 95050
(408) 236-2400 FAX (408) 236-2410

LANDSCAPE DESIGN

StringhamDesign
landscape architectural

RUSSELL STRINGHAM
1796 GUNSTON WAY SAN JOSE CA 95124
PHONE 408 886 4089
LIC.#3091

STRUCTURAL ENGINEER

PARADIGM structural engineers

639 Front Street, 4th Floor
San Francisco, CA 94111
o: 415.362.8944

MECHANICAL/PLUMBING/FP ENGINEER

Southland

Southland Industries
22340 Dresden Street, Suite 177
Dulles, VA 20166
Office: 703.834.5570
Fax: 703.834.5572

REDWOOD ELECTRIC GROUP

2775 Northwestern Parkway Santa Clara, CA 94402

| NO | DESCRIPTION | DATE |
|----|--------------------------------|------------|
| | SPECIAL USE PERMIT AMENDMENT 1 | 05/01/2020 |
| | SPECIAL USE PERMIT AMENDMENT | 01/10/2020 |

DRAWING ISSUES

PROJECT:

SV12/SV18/SV19
SPA15-031-01

GREAT OAKS BLVD
SAN JOSE, CA 95119

DWG. TITLE

**SITE LIGHTING PLAN
LUMINAIRE DOCUMENTATION**

| | |
|----------------------------|-------------|
| PROJECT NO: Project Number | DWG. NO: |
| DATE: 01/10/2020 | E012 |
| SCALE: | |

OWNER



EQUINIX

ARCHITECT

SHEEHAN NAGLE HARTRAY ARCHITECTS
130 E Randolph St
Suite 3100
Chicago, IL 60601
o: 312.633.2900
CHICAGO | LONDON

CIVIL ENGINEER

R+G RUTH AND GOING, INC.
Civil Engineering Land Surveying
Planning
2216 THE ALAMEDA SANTA CLARA, CA 95050
(408) 236-2400 FAX: (408) 236-2410

LANDSCAPE DESIGN

StringhamDesign
landscape architectural
RUSSELL STRINGHAM
1796 GUNSTON WAY SAN JOSE CA 95124
PHONE 408 886 4089
LIC.#3091

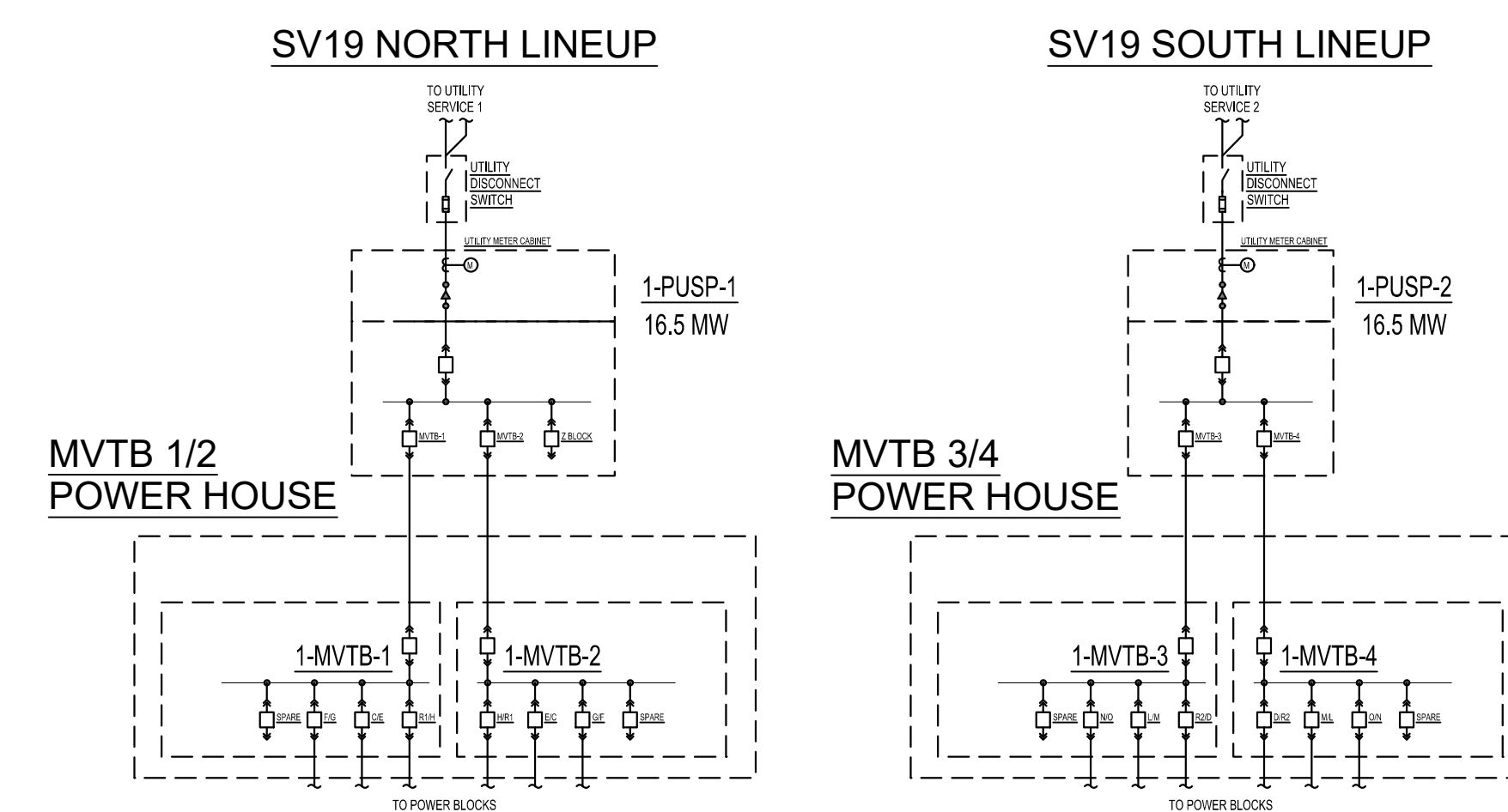
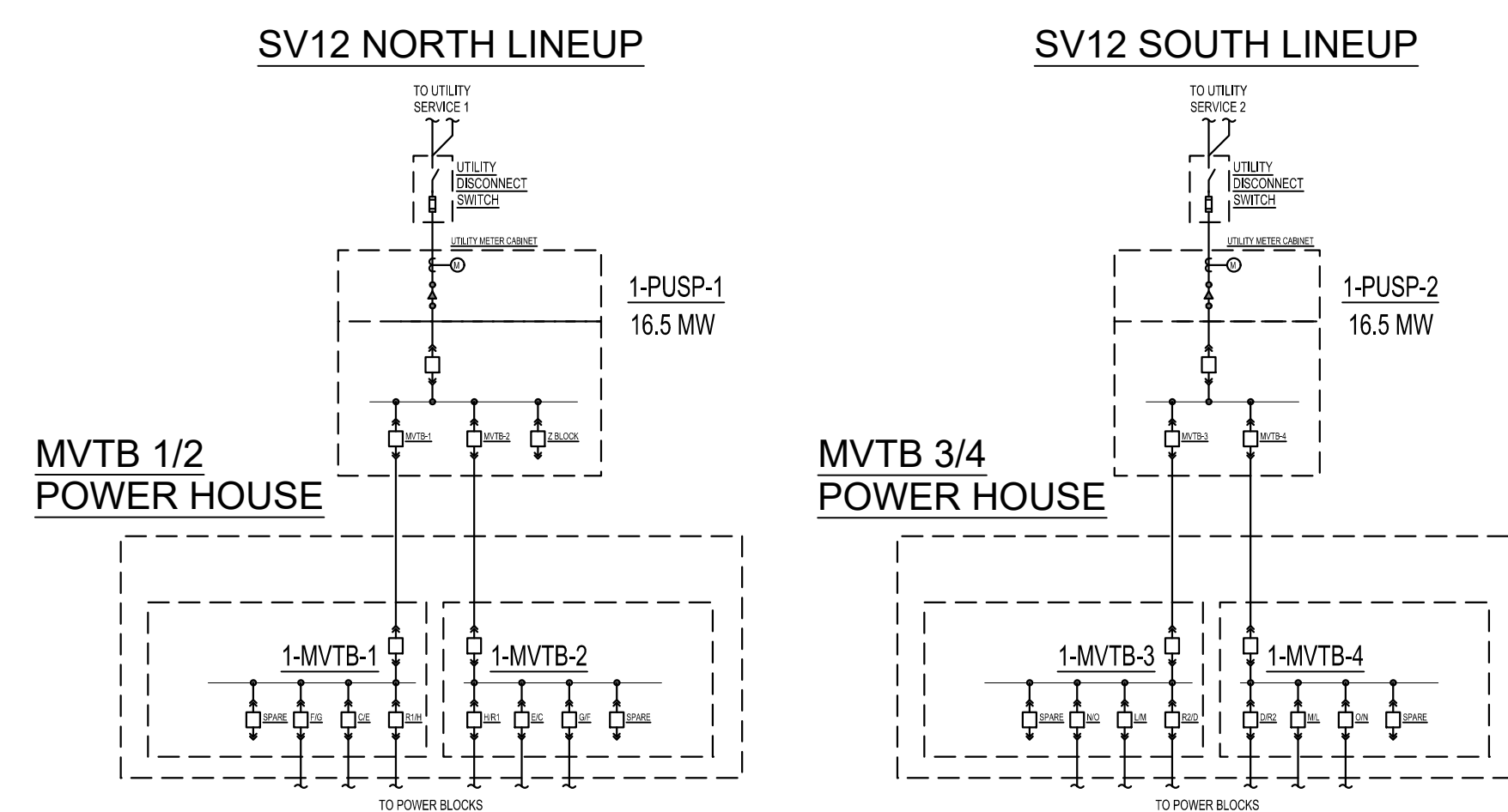
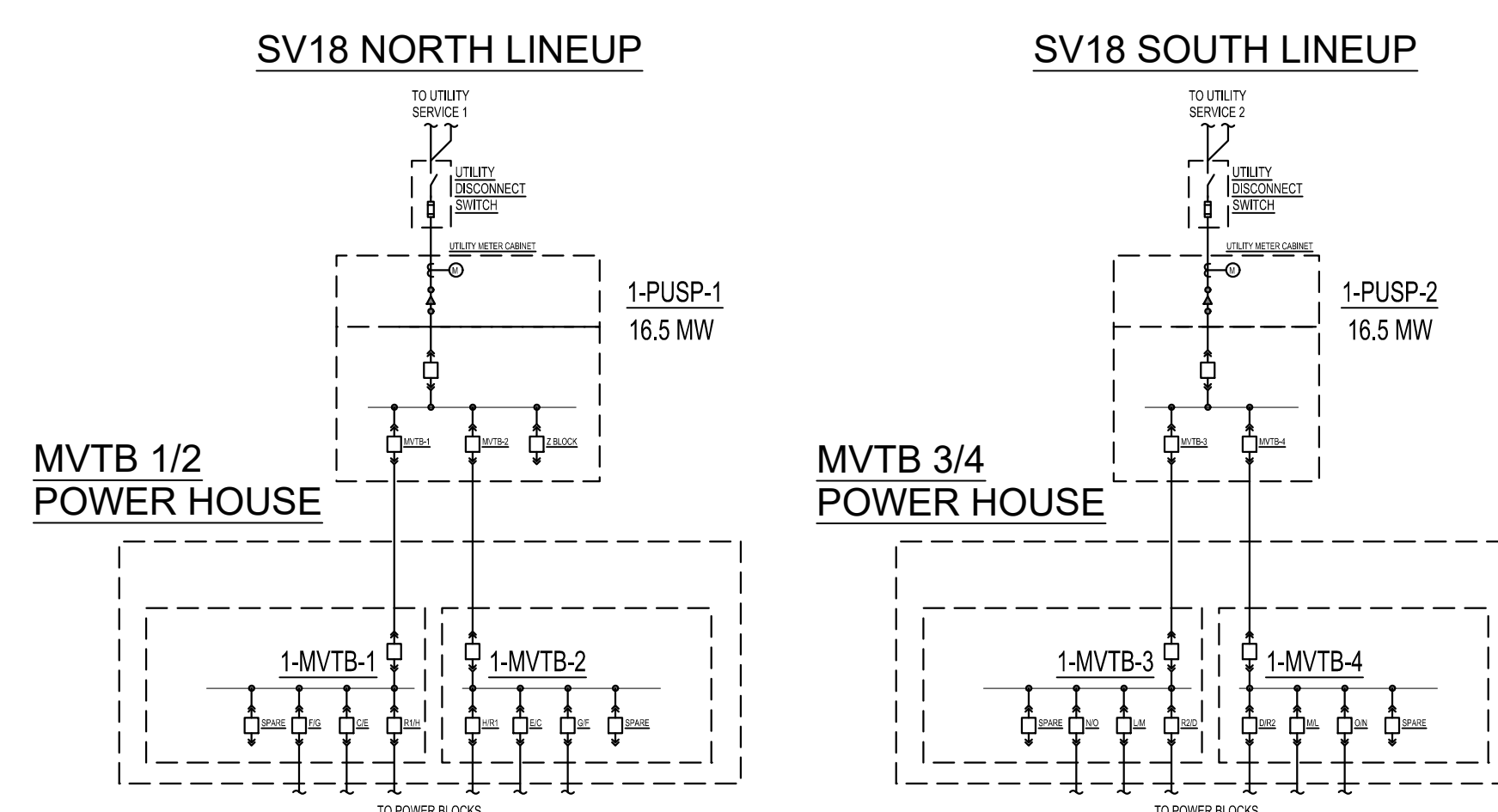
STRUCTURAL ENGINEER

PARADIGM structural engineers
639 Front Street, 4th Floor
San Francisco, CA 94111
o: 415.362.8944

MECHANICAL/PLUMBING/FP ENGINEER

Southland Industries
22340 Dresden Street, Suite 177
Dulles, VA 20166
Office: 703.834.5570
Fax: 703.834.5572

REDWOOD ELECTRIC GROUP
2775 Northwestern Parkway Santa Clara, CA 94402



1 OVERALL SITE MV SINGLE LINE DIAGRAM

Table with 3 columns: NO, DESCRIPTION, DATE. Contains two rows of permit amendment information.

Table with 3 columns: NO, DESCRIPTION, DATE. Contains two rows of permit amendment information.

DRAWING ISSUES

PROJECT:

SV12/SV18/SV19
SPA15-031-01

GREAT OAKS BLVD
SAN JOSE, CA 95119

DWG. TITLE

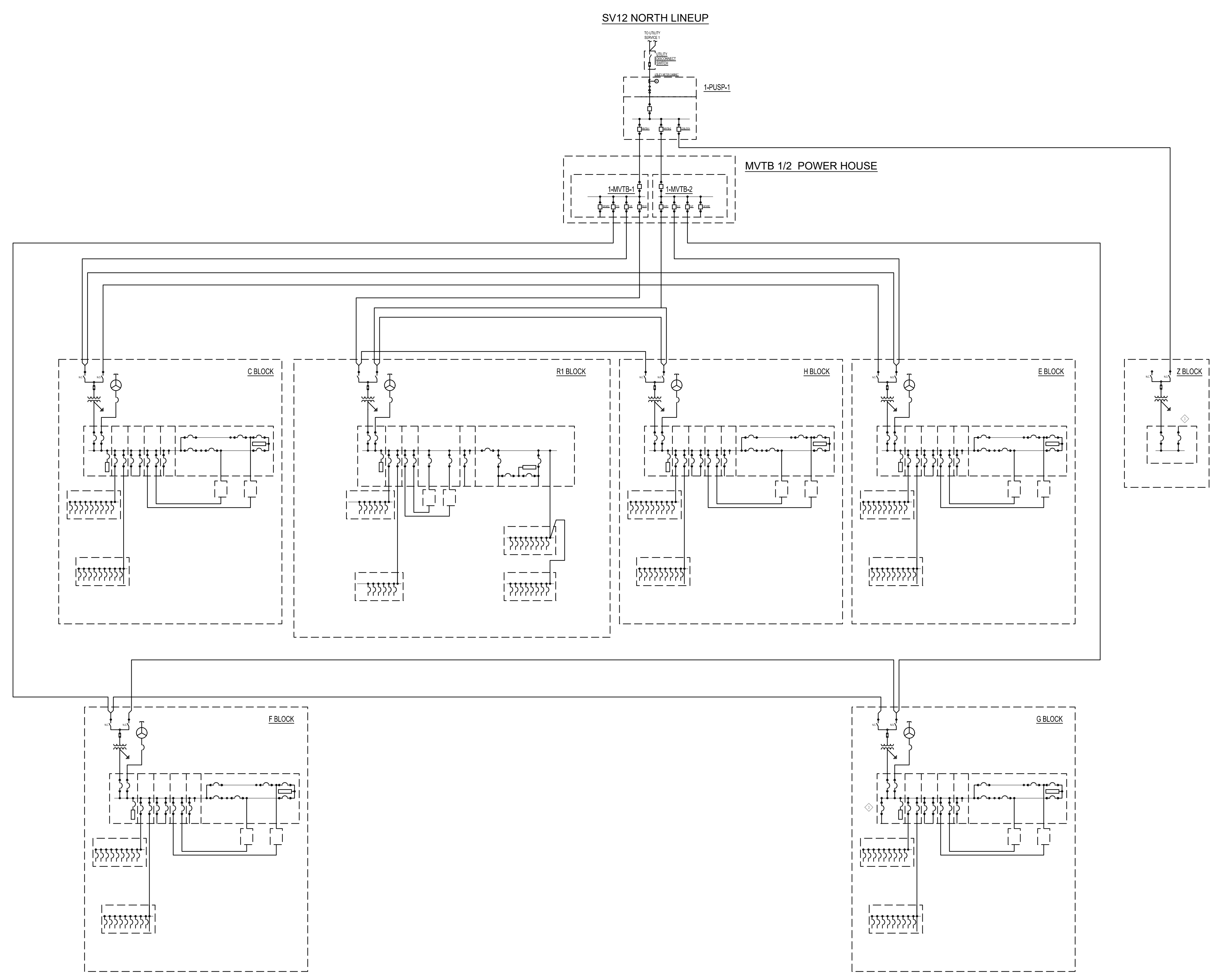
OVERALL SITE MV SINGLE LINE DIAGRAM

PROJECT NO: Project Number DWG. NO:

DATE: 01/10/2020

SCALE: E100

F:\0-Dwg\2020\20116-Equinix-SV12.dwg, 5/22/2020 8:13:22 AM, DWG To PDF.pc3, REDWOOD ELECTRIC GROUP, Landis, Wilson

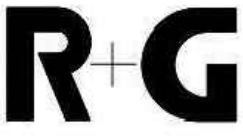


1 SV12 NORTH SINGLE LINE DIAGRAM

OWNER


EQUINIX

ARCHITECT
SHEEHAN NAGLE HARTRAY ARCHITECTS
 130 E Randolph St
 Suite 3100
 Chicago, IL 60601
 o: 312.633.2900
 CHICAGO | LONDON

CIVIL ENGINEER
 **RUTH AND GOING, INC.**
 Civil Engineering Land Surveying
 Planning
 2216 THE ALAMEDA SANTA CLARA, CA 95050
 (408) 236-2400 FAX: (408) 236-2410

LANDSCAPE DESIGN
StringhamDesign
 landscape architectural
 RUSSELL STRINGHAM
 1796 GUNSTON WAY SAN JOSE CA 95124
 PHONE 408 886 4089
 LIC.#3091

STRUCTURAL ENGINEER
 **PARADIGM structural engineers**
 639 Front Street, 4th Floor
 San Francisco, CA 94111
 o: 415.362.8944

MECHANICAL/PLUMBING/FP ENGINEER
 **Southland Industries**
 22340 Dresden Street, Suite 177
 Dulles, VA 20166
 Office: 703.834.5570
 Fax: 703.834.5572

 **REDWOOD ELECTRIC GROUP**
 2775 Northwestern Parkway Santa Clara, CA 94402

| NO | DESCRIPTION | DATE |
|----|--------------------------------|------------|
| | SPECIAL USE PERMIT AMENDMENT 1 | 05/01/2020 |
| | SPECIAL USE PERMIT AMENDMENT | 01/10/2020 |
| NO | DESCRIPTION | DATE |

DRAWING ISSUES

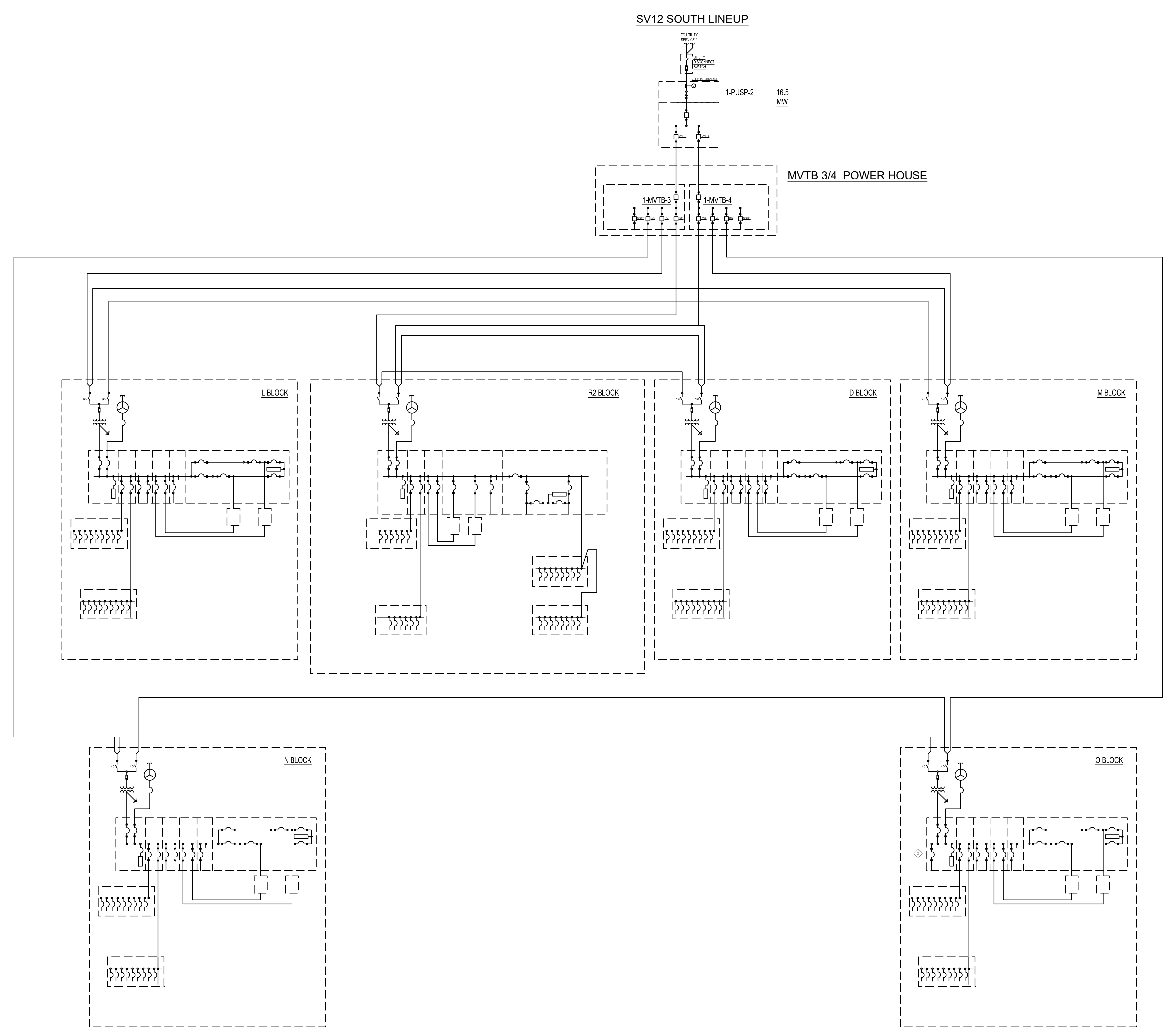
PROJECT:
SV12/SV18/SV19
 SPA15-031-01

GREAT OAKS BLVD
SAN JOSE, CA 95119

DWG. TITLE
SV12 NORTH SINGLE LINE DIAGRAM

PROJECT NO: Project Number
 DATE: 01/10/2020
 SCALE:
 DWG. NO:
E101

F:\0_Dwg\2020\20116_Equinix_SV12.dwg, Jim WJ\20116-S Site Utility.dwg, 5/22/2020 8:13:28 AM, DWG To PDF, pgs.
 REDWOOD ELECTRIC GROUP, Landis, Wilson



1 SV12 SOUTH SINGLE LINE DIAGRAM

OWNER

EQUINIX

ARCHITECT
SHEEHAN NAGLE HARTRAY ARCHITECTS
 130 E Randolph St
 Suite 3100
 Chicago, IL 60601
 o: 312.633.2900 CHICAGO | LONDON

CIVIL ENGINEER
 **RUTH AND GOING, INC.**
 Civil Engineering Land Surveying
 Planning
 2215 THE ALAMEDA SANTA CLARA, CA 95050
 (408) 236-2400 FAX: (408) 236-2410

LANDSCAPE DESIGN
StringhamDesign
 landscape architectural
 RUSSELL STRINGHAM
 1796 GUNSTON WAY SAN JOSE CA 95124
 PHONE 408 886 4089 LIC.#3091

STRUCTURAL ENGINEER
 **PARADIGM structural engineers**
 639 Front Street, 4th Floor
 San Francisco, CA 94111
 o: 415.362.8944

MECHANICAL/PLUMBING/FP ENGINEER
 **Southland Industries**
 22340 Dresden Street, Suite 177
 Dulles, VA 20166
 Office: 703.834.5570
 Fax: 703.834.5572

 **REDWOOD ELECTRIC GROUP**
 2775 Northwestern Parkway Santa Clara, CA 94402

| NO | DESCRIPTION | DATE |
|----|--------------------------------|------------|
| | SPECIAL USE PERMIT AMENDMENT 1 | 05/01/2020 |
| | SPECIAL USE PERMIT AMENDMENT | 01/10/2020 |
| NO | DESCRIPTION | DATE |

DRAWING ISSUES

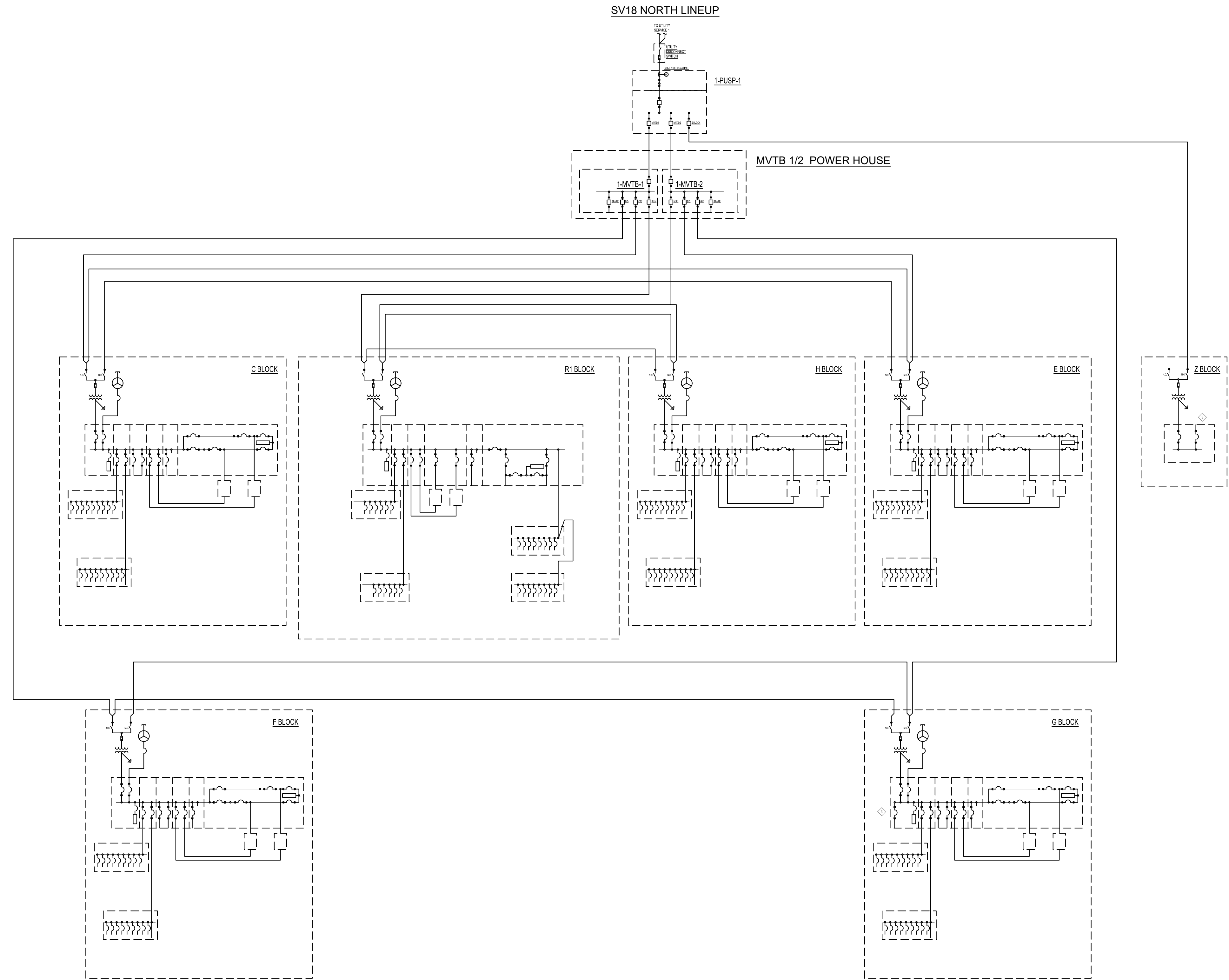
PROJECT:
 SV12/SV18/SV19
 SPA15-031-01

**GREAT OAKS BLVD
 SAN JOSE, CA 95119**

DWG. TITLE
**SV12 SOUTH SINGLE LINE
 DIAGRAM**

PROJECT NO: Project Number **DWG. NO:**
 DATE: 01/10/2020
 SCALE: **E102**

F:\0-Dwg\2020\20116 Equinix SV12.dwg, Jim WJ\20116-S Site Utility.dwg, 5/22/2020 8:13:35 AM, DWG To PDF.pc3, REDWOOD ELECTRIC GROUP, Landis, Wilson



1 SV18 NORTH SINGLE LINE DIAGRAM

OWNER


EQUINIX

ARCHITECT
SHEEHAN NAGLE HARTRAY ARCHITECTS
 130 E Randolph St
 Suite 3100
 Chicago, IL 60601
 o: 312.633.2900
 CHICAGO | LONDON

CIVIL ENGINEER
 **RUTH AND GOING, INC.**
 Civil Engineering Land Surveying
 Planning
 2215 THE ALAMEDA SANTA CLARA, CA 95050
 (408) 236-2400 FAX: (408) 236-2410

LANDSCAPE DESIGN
StringhamDesign
 landscape architectural
 RUSSELL STRINGHAM
 1796 GUNSTON WAY SAN JOSE CA 95124
 PHONE 408 886 4089
 LIC.#3091

STRUCTURAL ENGINEER
 **PARADIGM structural engineers**
 639 Front Street, 4th Floor
 San Francisco, CA 94111
 o: 415.362.8944

MECHANICAL/PLUMBING/FP ENGINEER
 **Southland Industries**
 22340 Dresden Street, Suite 177
 Dulles, VA 20166
 Office: 703.834.5570
 Fax: 703.834.5572

 **REDWOOD ELECTRIC GROUP**
 2775 Northwestern Parkway Santa Clara, CA 94402

| NO | DESCRIPTION | DATE |
|----|--------------------------------|------------|
| | SPECIAL USE PERMIT AMENDMENT 1 | 05/01/2020 |
| | SPECIAL USE PERMIT AMENDMENT | 01/10/2020 |
| NO | DESCRIPTION | DATE |

DRAWING ISSUES

PROJECT:
SV12/SV18/SV19
 SPA15-031-01

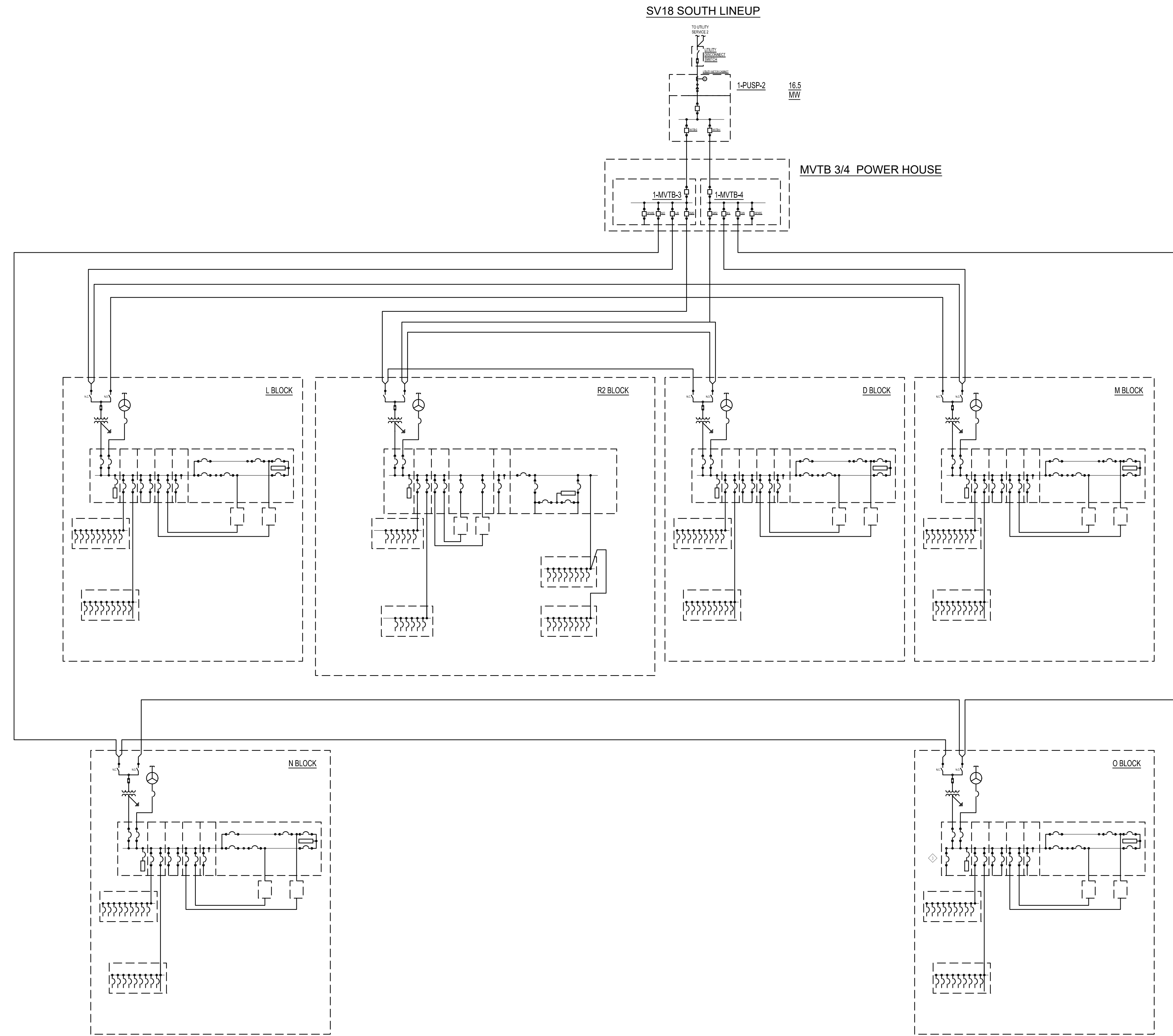
GREAT OAKS BLVD
SAN JOSE, CA 95119

DWG. TITLE
SV18 NORTH SINGLE LINE DIAGRAM

PROJECT NO: Project Number
 DATE: 01/10/2020
 SCALE:

DWG. NO:
E103

F:\0-Dwg\2020\20116-Equinix-SV12.dwg, Jim WJ\20116-S Site Utility.dwg, 5/22/2020 8:13:43 AM, DWG To PDF.pc3, REDWOOD ELECTRIC GROUP, Landis, Wilson



1 SV18 SOUTH SINGLE LINE DIAGRAM

OWNER
EQUINIX

ARCHITECT
SHEEHAN NAGLE HARTRAY ARCHITECTS
 130 E Randolph St
 Suite 3100
 Chicago, IL 60601
 o: 312.633.2900 CHICAGO | LONDON

CIVIL ENGINEER
R+G RUTH AND GOING, INC.
 Civil Engineering Land Surveying
 Planning
 2215 THE ALAMEDA SANTA CLARA, CA 95050
 (408) 236-2400 FAX: (408) 236-2410

LANDSCAPE DESIGN
StringhamDesign
 landscape architectural
 RUSSELL STRINGHAM
 1796 GUNSTON WAY SAN JOSE CA 95124
 PHONE 408 886 4089 LIC.#3091

STRUCTURAL ENGINEER
PARADIGM structural engineers
 639 Front Street, 4th Floor
 San Francisco, CA 94111
 o: 415.362.8944

MECHANICAL/PLUMBING/FP ENGINEER
Southland
 Southland Industries
 22340 Dresden Street, Suite 177
 Dulles, VA 20166
 Office: 703.834.5570
 Fax: 703.834.5572

REDWOOD ELECTRIC GROUP
 2775 Northwestern Parkway Santa Clara, CA 94402

| NO | DESCRIPTION | DATE |
|----|--------------------------------|------------|
| | SPECIAL USE PERMIT AMENDMENT 1 | 05/01/2020 |
| | SPECIAL USE PERMIT AMENDMENT | 01/10/2020 |

DRAWING ISSUES

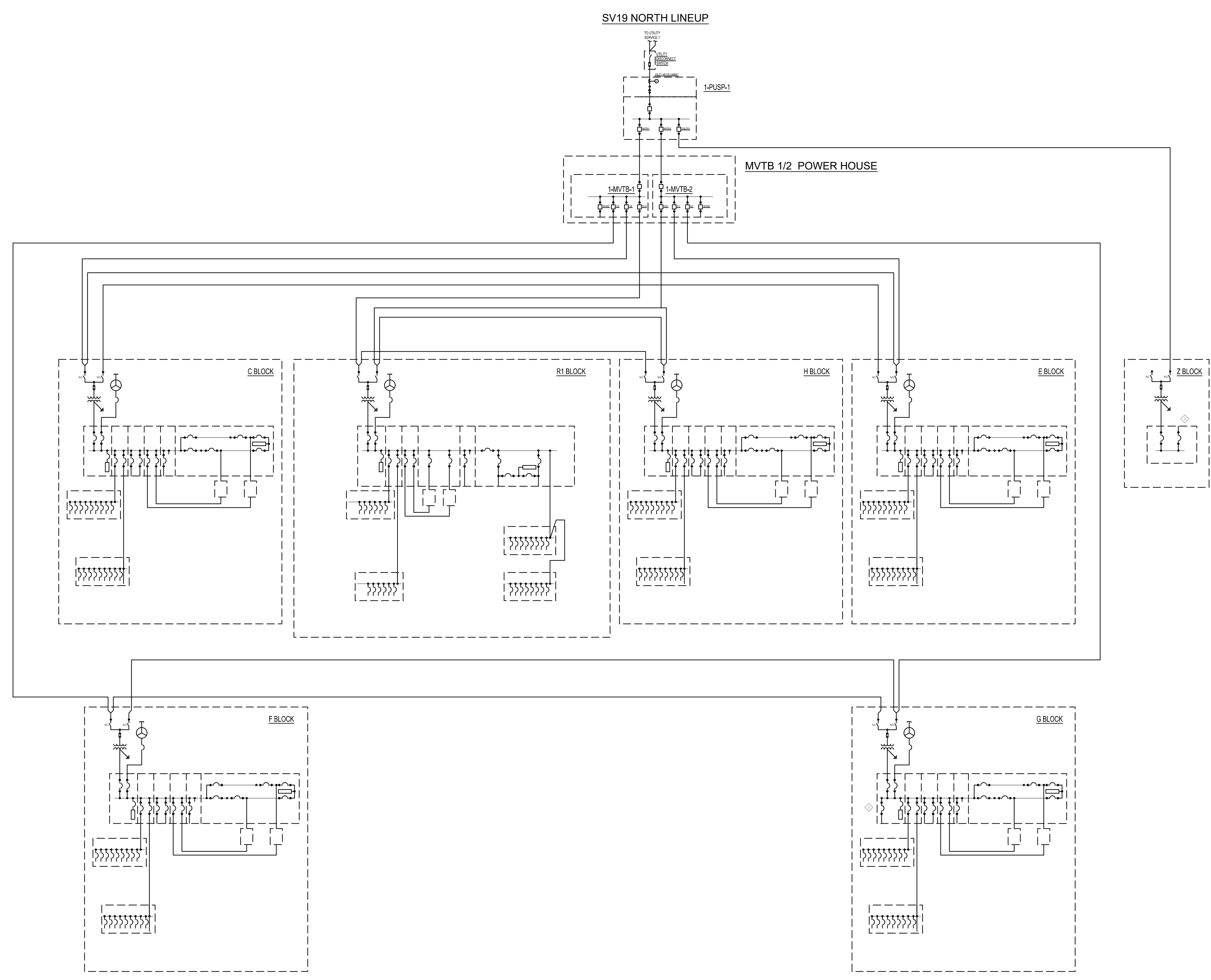
PROJECT:
SV12/SV18/SV19
 SPA15-031-01

GREAT OAKS BLVD
SAN JOSE, CA 95119

DWG. TITLE
SV18 SOUTH SINGLE LINE DIAGRAM

PROJECT NO: Project Number
 DATE: 01/10/2020
 SCALE: **E104**

F:\0_Dwg\2020\20116_Equinix_SV12.dwg, Jim WJ\20116-S Site Utility.dwg, 5/22/2020 8:13:50 AM, DWG To PDF.pc3, REDWOOD ELECTRIC GROUP, Landis, Wilson

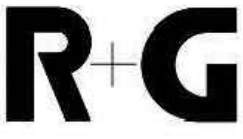


1 SV19 NORTH SINGLE LINE DIAGRAM

OWNER

EQUINIX

ARCHITECT
SHEEHAN NAGLE HARTRAY ARCHITECTS
 130 E Randolph St
 Suite 3100
 Chicago, IL 60601
 o: 312.633.2900
 CHICAGO | LONDON

CIVIL ENGINEER
 **RUTH AND GOING, INC.**
 Civil Engineering Land Surveying
 Planning
 2216 THE ALAMEDA SANTA CLARA, CA 95050
 (408) 236-2400 FAX: (408) 236-2410

LANDSCAPE DESIGN
StringhamDesign
 landscape architectural
 RUSSELL STRINGHAM
 1796 GUNSTON WAY SAN JOSE CA 95124
 PHONE 408 886 4089
 LIC.#3091

STRUCTURAL ENGINEER
 **PARADIGM structural engineers**
 639 Front Street, 4th Floor
 San Francisco, CA 94111
 o: 415.362.8944

MECHANICAL/PLUMBING/FP ENGINEER
 **Southland Industries**
 22340 Dresden Street, Suite 177
 Dulles, VA 20166
 Office: 703.834.5570
 Fax: 703.834.5572

 **REDWOOD ELECTRIC GROUP**
 2775 Northwestern Parkway Santa Clara, CA 94402

| NO | DESCRIPTION | DATE |
|----|--------------------------------|------------|
| | SPECIAL USE PERMIT AMENDMENT 1 | 05/01/2020 |
| | SPECIAL USE PERMIT AMENDMENT | 01/10/2020 |

DRAWING ISSUES

PROJECT:
 SV12/SV18/SV19
 SPA15-031-01

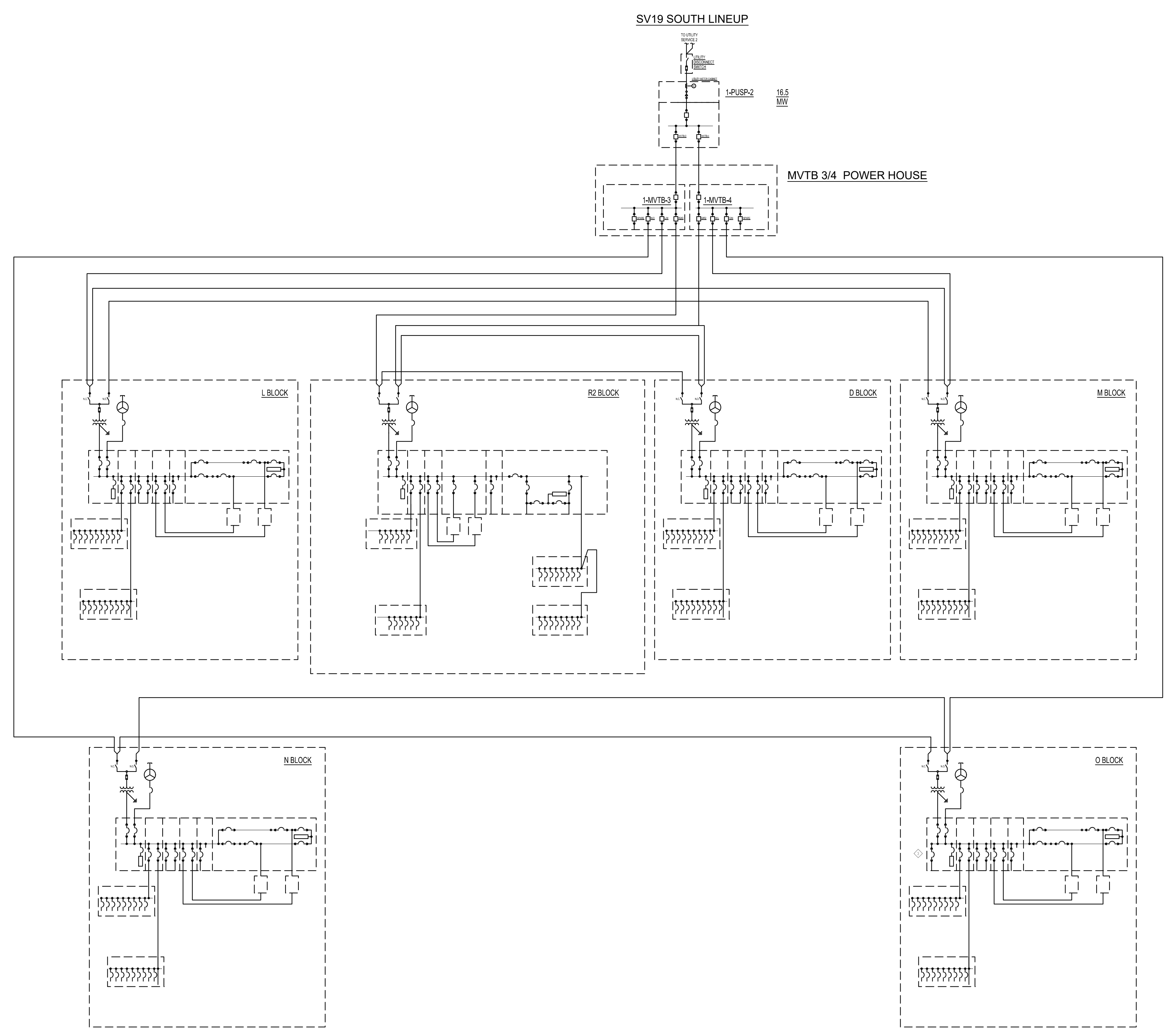
**GREAT OAKS BLVD
 SAN JOSE, CA 95119**

DWG. TITLE
**SV19 NORTH SINGLE LINE
 DIAGRAM**

PROJECT NO: Project Number
 DATE: 01/10/2020
 SCALE: **E105**

DWG. NO:
E105

F:\0_Dwg\2020\20116 Equinix SV12.dwg, Jim WJ\20116-S Site Utility.dwg, 5/22/2020 8:13:58 AM, DWG To PDF.pc3, REDWOOD ELECTRIC GROUP, Landis, Wilson



1 SV19 SOUTH SINGLE LINE DIAGRAM

OWNER

EQUINIX

ARCHITECT
SHEEHAN NAGLE HARTRAY ARCHITECTS
 130 E Randolph St
 Suite 3100
 Chicago, IL 60601
 o: 312.633.2900 CHICAGO | LONDON

CIVIL ENGINEER
R+G RUTH AND GOING, INC.
 Civil Engineering Land Surveying
 Planning
 2215 THE ALAMEDA SANTA CLARA, CA 95050
 (408) 236-2400 FAX: (408) 236-2410

LANDSCAPE DESIGN
StringhamDesign
 landscape architectural
 RUSSELL STRINGHAM
 1796 GUNSTON WAY SAN JOSE CA 95124
 PHONE 408 886 4089 LIC.#3091

STRUCTURAL ENGINEER
PARADIGM structural engineers
 639 Front Street, 4th Floor
 San Francisco, CA 94111
 o: 415.362.8944

MECHANICAL/PLUMBING/FP ENGINEER
Southland
 Southland Industries
 22340 Dresden Street, Suite 177
 Dulles, VA 20166
 Office: 703.834.5570
 Fax: 703.834.5572

REDWOOD ELECTRIC GROUP
 2775 Northwestern Parkway Santa Clara, CA 94402

| NO | DESCRIPTION | DATE |
|----|--------------------------------|------------|
| | SPECIAL USE PERMIT AMENDMENT 1 | 05/01/2020 |
| | SPECIAL USE PERMIT AMENDMENT | 01/10/2020 |

DRAWING ISSUES

PROJECT:
SV12/SV18/SV19
 SPA15-031-01

GREAT OAKS BLVD
SAN JOSE, CA 95119

DWG. TITLE
SV19 SOUTH SINGLE LINE DIAGRAM

PROJECT NO: Project Number DWG. NO:
 DATE: 01/10/2020
 SCALE: **E106**

F:\0_Dwg\2020\20116_Equinix_SV12.dwg, Jim WJ, 20116-S Site Utility.dwg, 5/22/2020 8:14:05 AM, DWG To PDF, pgs.
 REDWOOD ELECTRIC GROUP, Landis, Wilson