

**DOCKETED**

<b>Docket Number:</b>	01-AFC-17C
<b>Project Title:</b>	Inland Empire Energy Center Project Compliance
<b>TN #:</b>	233454
<b>Document Title:</b>	March 2020 Monthly Compliance Report
<b>Description:</b>	N/A
<b>Filer:</b>	Paul Kihm
<b>Organization:</b>	Latham & Watkins LLP
<b>Submitter Role:</b>	Applicant Representative
<b>Submission Date:</b>	6/11/2020 5:35:20 PM
<b>Docketed Date:</b>	6/12/2020

June 10, 2020

Keith Winstead, CEC Compliance Project Manager  
California Energy Commission  
Siting Transmission and Environmental Protection  
1516 Ninth Street, MS 15  
Sacramento, CA 95814-5512

**Subject: Monthly Compliance Reports (MCR) for March 2020**

Dear Mr. Winstead:

On behalf of Inland Empire Energy Center, LLC, ATC Group Services (ATC) is pleased to submit the March 2020 Monthly Compliance Report (MCR) for the IEEC Demolition Project. This MCR is being provided to comply with requirements set forth in the Decommissioning and Demolition Plan for the IEEC, dated June 20, 2019 (Docket No. 01-AFC-17C). This MCR consists of the following specific documents, included as attachments to this submittal letter:

Attachment A - Air Quality Construction Mitigation Report;  
Attachment B - Monthly Biological Monitoring Report.

Thank you and please call me with any questions or clarifications.

Sincerely,  
**ATC Group Services LLC**



Jim Nuccio

Cc: IEEC/GE Power Project Team

# Attachment A

## Air Quality Construction Mitigation Monthly Report – March 2020

# **AIR QUALITY CONSTRUCTION MITIGATION REPORT**

## **IEEC DEMOLITION PROJECT**

### **MONTHLY REPORT MARCH 2020**

Pursuant to Condition AQ-SC3 issued by the California Energy Commission (CEC) for the decommissioning of the Inland Empire Energy Center (IEEC) project, this report details the compliances status of the project for March, 2020 with respect to the various air quality mitigation conditions that govern the project. This report has been prepared by the Air Quality Compliance Mitigation Manager (ACQMM), Mr. Paul Weir, Senior Air Quality Engineer, and evaluates the areas discussed below.

#### **1a. Compliance Status of Mobile Off-Road Equipment**

A total of seventeen (17) Equipment Tags have been issued for individual diesel fueled mobile off-road vehicles to operate at the site. Some of these vehicles had already left the site by the end of March.

This equipment consists of the following off-road vehicles, as more fully detailed in ATTACHMENT 1:

- 6 Excavators (only 3 of which were present at the site at the end of March)
- 1 Front-End Loader (left the site before the end of March)
- 5 Skid-Steer Loaders (only 3 of which were still present at the site at the end of March)
- 1 Forklift
- 1 Aerial Lift (left the site before the end of March)
- 3 Boom Lifts (only 1 of which was still present at the site at the end of March)

#### **1b. Compliance Status of Portable Equipment**

A total of (2) Equipment Tags have been issued for pieces of diesel fueled portable equipment were also present at the site, also as more fully in ATTACHMENT 1:

- 1 Generator Set (75 KW)
- 1 Air Compressor (185 CFM)

All mobile off-road equipment, as well as all portable equipment, present at the IEEC project was found to be in compliance with the various California Diesel-Fueled Fleet Regulations. All mobile off-road equipment and portable equipment present at the site was inspected daily to verify the presence of the Equipment Tags. Fuel records were inspected weekly to determine the fuel consumption of each piece of equipment and to verify that all diesel fuel met the California Air Resources Board (ARB) standards for ultra- low sulfur diesel fuel of 15 PPM sulfur.

## **2. Compliance Status of Mobile On-Highway Vehicles**

Additional Certificates of Reported Compliance, as issued by the California ARB for the following on-road vehicle fleets that will operate at the IEEC project, were received and reviewed:

• MA Perez Trucking	Fleet ID 34669	Expires December 31, 2020
• Dal Chem dba Alexis Oil	Fleet ID 52997	Expires December 31, 2020
• J Garcia Trucking	Fleet ID 90601	Expires December 31, 2020
• DGJ Trucking	Fleet ID 90616	Expires December 31, 2020
• Silverado Contractors Inc.	Fleet ID 161385	Expires December 31, 2020
• Industry Transport	Fleet ID 161841	Expires December 31, 2020

All of the vehicle fleets currently in use at the IEEC project were found to be in compliance with the California ARB Truck and Bus Regulation for on-road vehicles.

## **3. Compliance with Visible Emission Standards**

Observations of all on-site demolition activities were conducted daily by State of California ARB Certified Visible Emission Evaluators (VEE) Paul Weir and/or Andy Pulido. Observations were often conducted for multiple hour intervals for both the demolition of the cooling tower structures and the loading of demolished material into haul trucks for removal from the site.

All demolition activities were found to be in compliance with the following two project conditions:

- 1) No visible emissions of greater than 20% at the specific activity being observed
- 2) No visible emissions crossing the property line

All observed loading of demolished material into haul trucks for removal from the site was accomplished with no visible emissions.

## **4. Additional Comments on Compliance**

A. All interior traveled surfaces subject to vehicle traffic were kept sufficiently clean or were watered to prevent dust emissions of greater than 20% opacity at any time, and to keep any visible dust emissions from crossing the property line.

B. Pre-watering occurred for all components that were scheduled for demolition. In addition, watering of the various structures continued during actual demolition, with additional water being applied, as needed, to the demolished materials before and during loading into on-highway trucks for removal from the site. During several days of truck loading, daily rainfall proved adequate to control visible emissions from all operations.

# ATTACHMENT 1

## STATUS OF DIESEL FUELED EQUIPMENT AUTHORIZED AT SITE

MARCH 2020

EQUIPMENT TAG	MAKE & MODEL	ON-SITE?	
		AT START OF MONTH	AT END OF MONTH
EXCAVATORS			
ME-1-01-A	75X3 LINKBELT	NO	YES
ME-1-02-D	1200 HITACHI	YES	YES
ME-1-03-A	490 LINKBELT	NO	NO
ME-1-04-A	350X4 LINKBELT	NO	NO
ME-1-05-A	870 HITACHI	YES	YES
ME-1-06-A	350 LINKBELT	YES	YES
FRONT-END LOADERS			
ME-4-01-A	JOHN DEERE 544L	YES	NO
SKID-STEER LOADERS			
ME-5-01-E	T590 BOBCAT	YES	YES
ME-5-02-E	T550 BOBCAT	NO	NO
ME-5-03-E	S750 BOBCAT	YES	YES
ME-5-04-E	S740 BOBCAT	NO	NO
ME-5-05-E	S750 BOBCAT	YES	YES
FORKLIFTS			
ME-7-01-E	12 K GRADEALL	YES	YES
BOOM LIFTS			
ME-8-01-E	JLG 600S	YES	YES
ME-8-02-E	SKYJACK	NO	NO
ME-8-03-E	GENIE	NO	YES
AERIAL LIFTS			
ME-9-01-E	JLG 600 AJ	YES	NO
GENERATOR SETS			
PE-1-01-A	75 KW GEN-SET	NO	YES
AIR COMPRESSORS			
PE-2-01-F	185 CFM SULLAIR	NO	YES

# Attachment B

## Monthly Biological Survey Report – March 2020

April 8, 2020  
Job Number: 1104-015  
IEEC Decommissioning - Monthly Monitoring Report

**MEMORANDUM FOR THE RECORD**

2.6 1104-015.M02

TO: ATC Group Services LLC  
(Mr. Jim Nuccio)

General Electric Power  
(Mr. Frank Escobedo)

*Final Report will be transmitted to:*  
California Energy Commission

FROM: Sapphos Environmental, Inc.  
(Ms. Paulette Loubet)

SUBJECT: Monthly Monitoring Report – March 2020

FIGURES: 1. Regional Vicinity Map  
2. Biological Resources Observations

ATTACHMENTS: 1. Pre-Demolition Biological Survey Forms  
2. Environmental training Program Sign-In Sheet

**Corporate Office:**

430 North Halstead Street  
Pasadena, CA 91107  
**TEL** 626.683.3547  
**FAX** 626.628.1745

**Billing Address:**

P.O. Box 655  
Sierra Madre, CA 91025

**Web site:**

[www.sapphosenvironmental.com](http://www.sapphosenvironmental.com)



## EXECUTIVE SUMMARY

This Memorandum for the Record (MFR) serves as the Monthly Biological Monitoring Report for the Inland Empire Energy Center (IEEC) Decommissioning and Demolition Project (Project) for the month of March 2020. As directed by the California Energy Commission (CEC) in accordance with the revised Closure Plan, Biological Resources Mitigation Implementation and Monitoring Plan (BRMIMP), and the IEEC Closure Plan Staff Analysis and Recommendation prepared for the project, the Monthly Monitoring Report was prepared by the Designated Biologist (DB). Activities included weekly site checks conducted on March 2, 9, 16, and 30, 2020. Full-time construction monitoring was conducted on March 3 and 4, 2020. No site check was conducted the week of March 23, 2020 as the site was closed due to adjusting to new procedures related to the Covid-19 health crisis.

As part of the CEC approval of this project, activities must maintain compliance with mitigation measures identified in the BRMIMP. Implementation of these conditions of certification and the updated BRMIMP in the revised Closure Plan would ensure that closure activities comply with applicable LORS and would not result in significant impacts to biological resources.

The weekly site checks and monitoring were performed by the Sapphos Environmental, Inc. DB (Ms. Paulette Loubet). During the weekly site checks, the DB verified that no active bird nests were present within any equipment or structures scheduled for demolition or within the surrounding area. As part of the Project kick-off, a Worker Environmental Awareness Program (WEAP) was presented to all crew members at the first day tailboard on February 24, 2020.

On March 2, 2020, two (2) active owl nests were observed onsite and specific Environmentally Sensitive Area (ESA) buffers were put into place. One of the active nests, located in an owl box on the remaining east wall of the cooling, contains a barn owl and seven (7) eggs. The second active nest, located on the southwest corner of Unit 1, contains a great horned owl nest and three (3) chicks. The DB determined the appropriate ESA buffer for the barn owl nest would be 200 feet. The ESA buffer for the great horned owl nest was modified to 100 feet on the south and west sides due to sound walls and 200 feet to the north and west. When project activities were scheduled to occur near the nest buffers the DB provided full-time monitoring to observe and document the nesting birds' behavioral reaction to equipment and activities during active construction.

The week of March 23, 2020, the site and all demolition activities were temporarily halted while requirements. Demolition activities resumed on Monday, March 30, 2020 with a smaller crew.

Anticipated Project activities for April include continued removal of turbine equipment from Unit 2, clearing of debris from the cooling tower and courtyard area as well as various soft demolition activities around the site.

## INTRODUCTION

This Memorandum for the Record (MFR) serves as the Monthly Biological Monitoring Report for the Inland Empire Energy Center (IEEC) Decommissioning and Demolition Project (Project) for the month of March 2020. The MFR includes reporting of any marked sensitive biological resource areas established for avoidance, the findings of the Pre-Demolition Surveys, Site Check data forms, Incident & Wildlife Observation Report Forms, and summaries of these records. Activities for the month of March 2020 included four (4) weekly site checks, and full-time monitoring conducted on March 3 and 4, 2020.

The IEEC is an existing natural gas-fired, combined-cycle generating facility located in Riverside County, California. The Project is owned and operated by Inland Empire Energy Center, LLC, which is an indirectly wholly owned subsidiary of General Electric Company (GE).

The Demolition scope to be completed includes removal of above-grade structures associated with Unit 1, Unit 2, and the cooling tower including support systems and appurtenances and removal of subsurface concrete pads, sumps, piping and structure (outside the power block footprint) within 12 feet of grade. At the completion of demolition activities, site grade will be returned to datum elevation. All areas excavated during demolition will be backfilled with existing site material and imported clean engineered fill, if necessary, to maintain the required site grade.

## PROJECT LOCATION

The Project is located at 26226 Antelope Road, Menifee, California 92585. The Project site is located approximately 6.0 miles west of the City of Hemet, 4.0 miles east of the City of Perris, and 30.0 miles southeast of the City of Riverside (Figure 1, *Regional Vicinity Map*). The Project is located within the U.S. Geological Survey (USGS) 7.5-minute series Romoland topographic quadrangle.<sup>1</sup> The Project is roughly bound by Antelope Road to the northwest, Ethenac Road to the north, McLaughlin to the south, and an open undeveloped lot to the east.

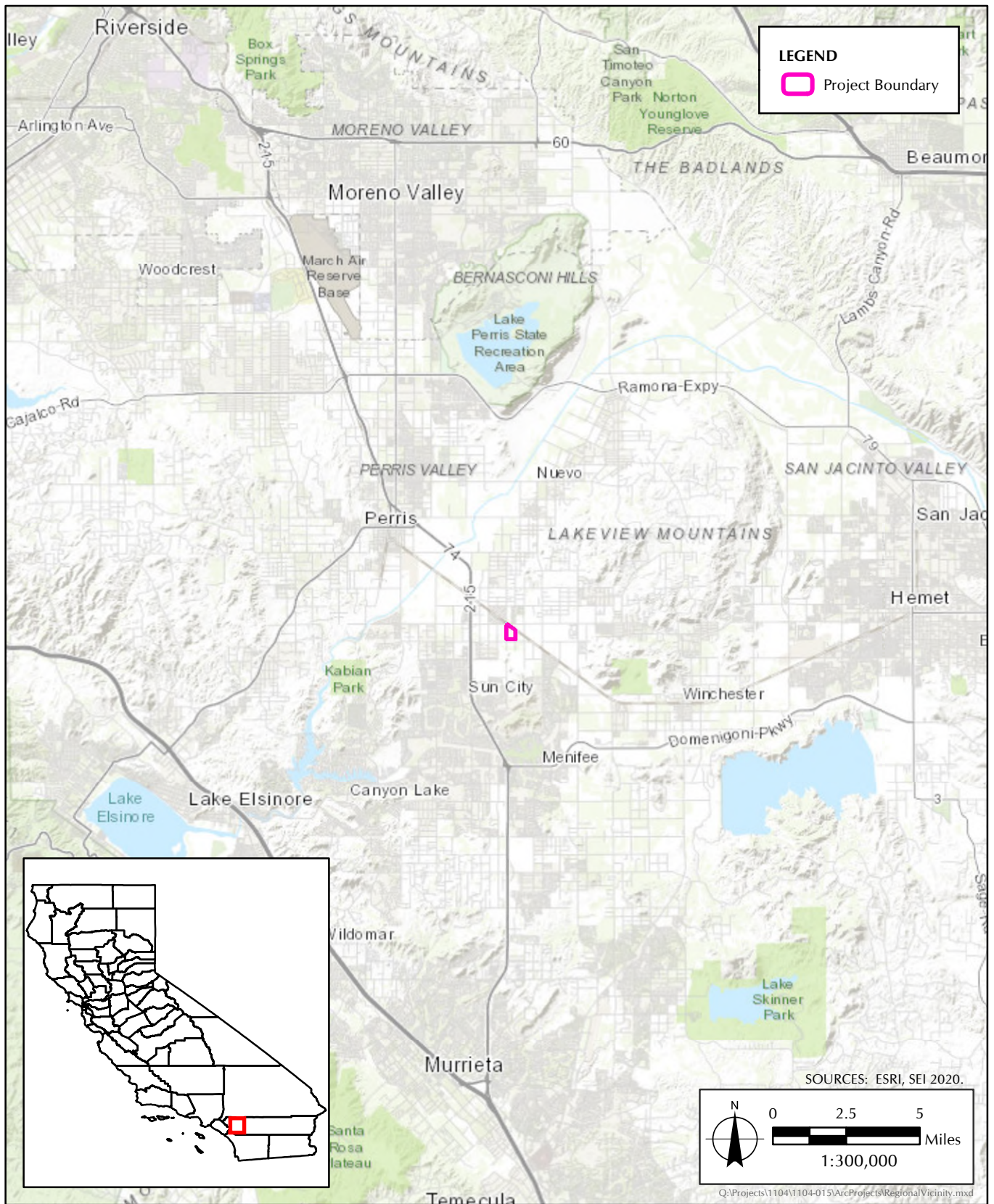
The Project occupies approximately 35 acres within the 45.8-acre Project site. Approximately 24 fenced acres accommodate the power generation facility, a switchyard, a water treatment facility, storage tank areas, a parking area, a control room building, and two (2) storm water retention basins. The remaining 11 acres of the 35 developed acres are comprised of landscaped areas and access roads. The areas surrounding the Project site are also heavily disturbed and used primarily for industrial purposes. The site contains existing mature landscape trees and shrubs along the property line. The site also contains two (2) water retention basins on the south and southeast. Major project structures and components are depicted in Figure 2, *Biological Resources Observations*.

## METHODS

This section describes the methods undertaken by Sapphos Environmental, Inc. biologists to quantify avian species present within the Project area during weekly site checks and actions taken during full-time monitoring. No Pre-Demolition Surveys were conducted in the month of March.

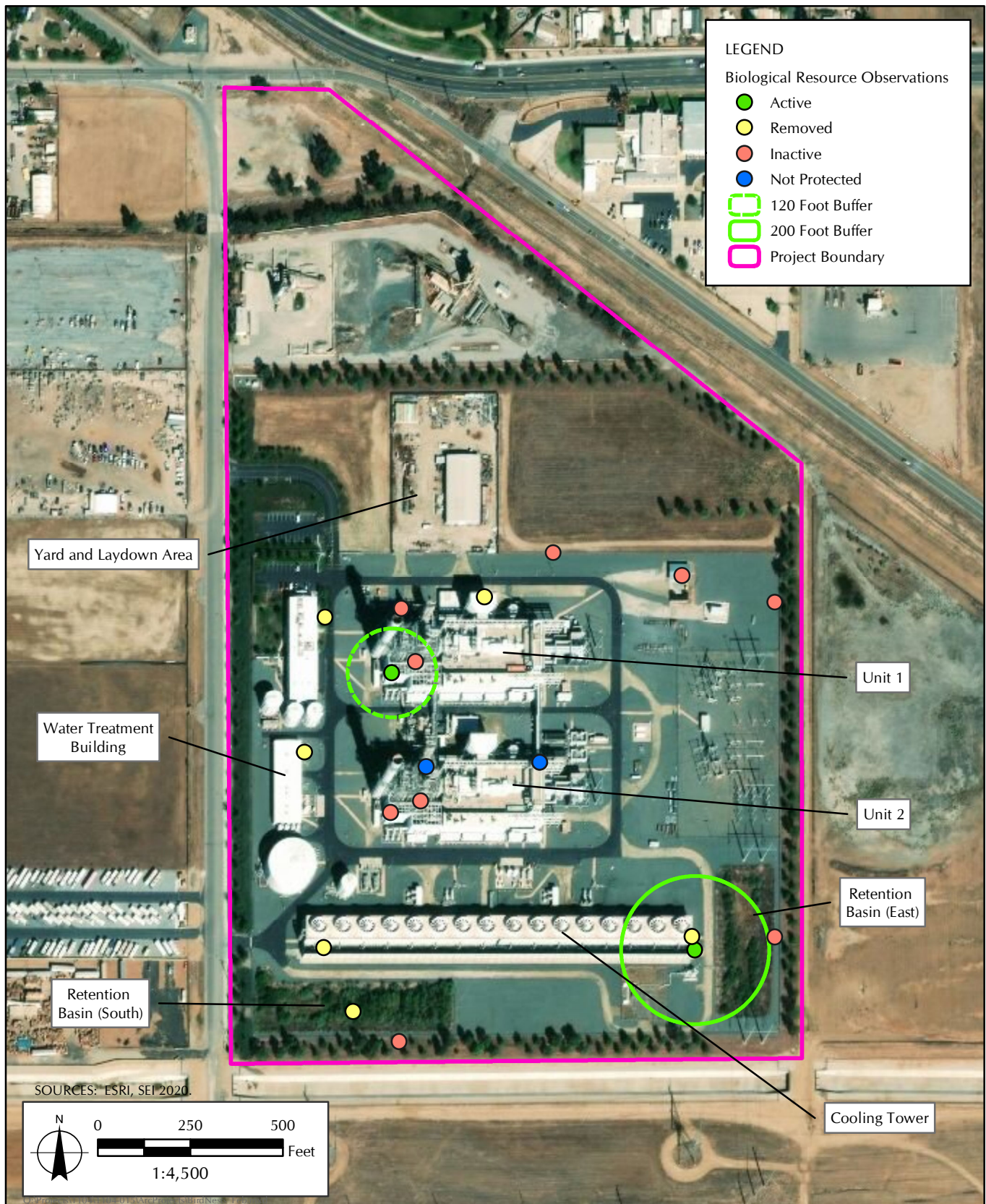
---

<sup>1</sup> U.S. Geological Survey. [1952] 1967. 7.5-Minute Series Los Angeles Topographic Quadrangle. Reston, VA.



**FIGURE 1**  
Regional Vicinity Map





**FIGURE 2**  
Biological Resources Observations

In compliance with the BRMIMP, once the Pre-Demolition Survey was completed and a work area was established, monitoring was reduced to weekly site checks during nesting bird season.

Weekly site checks consist of a pedestrian search by the DB for both direct and indirect evidence of bird nesting. Direct evidence includes the visual identification of an actual nest location. Indirect evidence includes observing birds for nesting behavior, such as copulation, carrying food or nesting materials, nest building, adult agitation or feigning injury, feeding chicks, removal of fecal sacks, and other characteristic behaviors that indicate the presence of an active nest. Each site check was conducted in a single day and included completion of appropriate data forms.

If active songbird or raptor nests were observed within structures scheduled for removal, or within 300 feet of the demolition area, Project activities were suspended within a determined buffer of the nesting until the DB could arrive to monitor. After baseline observations were made by the DB a species-specific nest buffer was established based on details such as nest location, stage of nesting (i.e., incubation, feeding chicks) and surrounding activities.

During full-time monitoring, the DB implemented and maintained the established ESA buffer, monitored adjacent construction activities, and documented observations of the nesting birds' behavior and reaction to construction. During monitoring, the DB was in direct contact with crews via radio to provide updates.

All observations have been recorded in a database, and a Survey Report Form was generated for each site check and monitoring (Attachment 1, *Pre-Demolition Biological Survey Forms*).

## **RESULTS**

### **Impact Avoidance Measures**

As part of the preparation for the Project kick-off, the WEAP was reviewed and updated to include details related to nesting birds. This information was presented at the first day tailboard on February 24, 2020 to all demolition crew members. The Certificate of Completion signed by all who attended the training is included in Attachment 2, *Environmental training Program Sign-In Sheet*. No new crew members joined in the month of March.

The DB implemented specific impact avoidance measures and established ESAs for the two (2) active owl nests. The DB implemented flagging and signage of construction areas and roads. See Attachment 1 for an examples of ESA signage.

### **Areas and Activities Monitored**

A summary of the Weekly Site Checks and monitoring is included below (Table 1, *Summary of Activities in March*). All Weekly Site Check and Monitoring Forms are included in Attachment 1.

Figure 2, *Biological Resources Observations*, includes areas surveyed, sensitive biological resources observed and the location of impact avoidance measures (ESA buffers) established onsite.

**TABLE 1**  
**SUMMARY OF ACTIVITIES**

Date	Time	Staff	Activity in Progress	Crews/ Equipment	Comments	Required Action Items
3/2/2020	0700–1450	DB (Paulette Loubet)	Demolition of Cooling tower.	Water truck, excavator, bobcat, forklift, work trucks	DB (Paulette Loubet) conducted a weekly site check. Two (2) active nests were observed at the site.	A 200-foot buffer was established for the barn owl nest and a modified buffer was established for the great horned owl nest. Activities near nest buffers require full-time monitoring.
3/3/2020	1050–1625	DB (Paulette Loubet)	Cleaning up debris from Cooling tower.	Water truck, excavator, bobcat, forklift, work trucks	DB conducted full-time monitoring while the crews worked near the barn owl nest. No new active nests were observed at the site.	Activities near buffers require full-time monitoring.
3/4/2020	0620–1220	DB (Paulette Loubet)	Cleaning up debris from Cooling tower.	Water truck, excavator, bobcat, forklift, work trucks	DB conducted full-time monitoring while the crews worked near the barn owl nest. No new active nests were observed at the site.	Activities near buffers require full-time monitoring.

**TABLE 1**  
**SUMMARY OF ACTIVITIES, *Continued***

Date	Time	Staff	Activity in Progress	Crews/ Equipment	Comments	Required Action Items
3/9/2020	0600–1400	DB (Paulette Loubet)		Water truck, excavator, bobcat, forklift, work trucks	DB (Paulette Loubet) conducted a weekly site check and monitoring while the crews worked near the barn owl nest. No new active nests were observed at the site.	Activities near buffers require full-time monitoring.
3/16/2020	0709–1440	DB (Paulette Loubet)		Water truck, excavator, bobcat, forklift, work trucks	DB (Paulette Loubet) conducted a weekly site check and monitoring while the crews worked near the great horned owl nest. No new active nests were observed at the site.	DB adjusted great horned owl nest buffer to be 120 feet on the south and southeast sides.
3/23/2020	–	–	None.	None.	No weekly site check conducted.	–
3/30/2020	0620–1000	DB (Paulette Loubet)		Water truck, excavator, bobcat, forklift, work trucks.	DB (Paulette Loubet) conducted a weekly site check. No new active nests were observed at the site.	Activities near buffers require full-time monitoring. ATC (Andy Pulido) will update the DB daily on the great horned owls.

*Incident & Wildlife Observation Report*

No Incident & Wildlife Observation Report forms were completed by onsite personnel during the month of March.

## CONCLUSIONS

At every site visit conducted in March, the DB verified that no new migratory bird nests were present, and clearance was granted for construction activities to continue with monitoring required for work near the owl nest buffers.

The following is a summary of scope of work for demolition and monitoring activities planned for the month of April 2020.

- Weekly Site checks will occur April 6, 13, 20, and 27, 2020.
- The DB will continue to coordinate with construction management to schedule upcoming Pre-Demolition Surveys.

Should there be any questions, or should further information be required, please contact Ms. Paulette Loubet at (626) 683-3547, extension 142.



***ATTACHMENT 1***  
***PRE-DEMOLITION BIOLOGICAL SURVEY FORMS***

---

**Inland Empire Energy Center Project  
Pre-Construction Biological Survey Form**

Date: March 4, 2020	Observer: Paulette Loubet Designated Biologist (DB)	Start Time: 06:20 End Time: 12:20	Page 1 of 3
Visibility (circle one): Good			
Precipitation (circle one): None			

**Description of Area Surveyed (attach map or include GPS coordinates):**

0620 DB arrived on site.

0630 observed barn owl in box. Closed cooling unit doors under box to help block construction activities

0655 crews started powering up equipment and working on far west side of cooling unit. Another crew checked the remaining open bird boxes and after confirming with the DB they were inactive they were boarded up.

0730 started working to remove debris from within edge of buffer Anything closer will be removed by hand

0845 mostly out of buffer, owl at back of box sitting low

0905 could see owls face in opening

0900-1100 crews moved debris further and further back away from buffer. Owl did not show any signs of disturbance.

1100-1130 crews stopped for lunch. DB checked and all materials were now outside the owl nest buffer. After lunch the DB checked in with Silverado (Mike) to see what activities are planned for the rest of the day and to the end of the week. After the DB checked in with Silverado (Miguel) to confirm no further work would occur in or near the buffer. Miguel confirmed they would not be working in or near the buffer.

1220 DB left the site

**Habitat Description:**

Eastern basin and east side of cooling tower

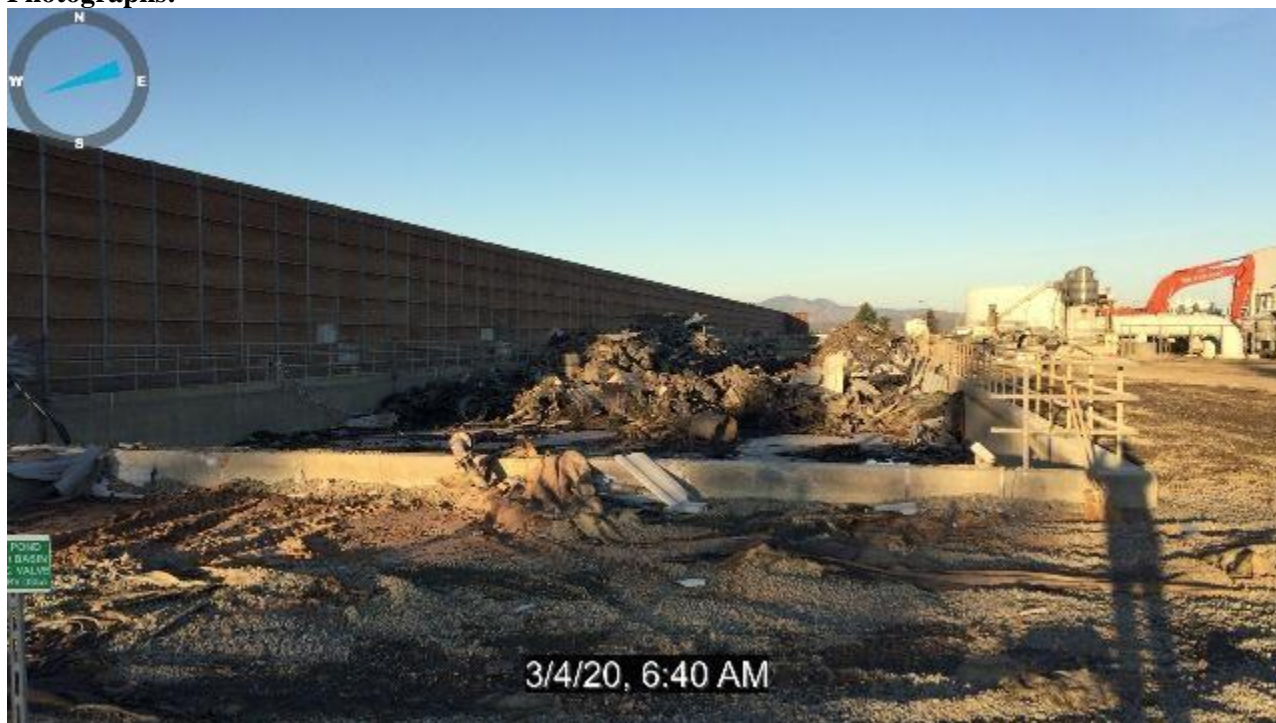
**Species Observed (attach additional sheet if necessary):**

<b>Animals</b>
Barn owl, lesser goldfinch, kestrel, raven, house finch, song sparrow, red tailed hawk, pigeon, Anna's humming bird, yellow rumped warbler, white crowned sparrow, Say's phoebe, starling, mourning dove, Cassin's kingbird, meadow lark, bushtit, northern mockingbird, red wing blackbird, golden crown sparrow, great trailead grackle, black phoebe

**Site Information**

Overall habitat quality: Poor: Site is entirely developed besides basins
Current land use: Inland Empire Energy Center
Surrounding land use: Open fields, urban/residential development and commercial/industrial
Visible disturbance: Urban development, demolition activities, and roads
Threats: Demolition activities
Comments: None

**Photographs:**



2020/03/04 06:40:25

33.7377 -117.16808

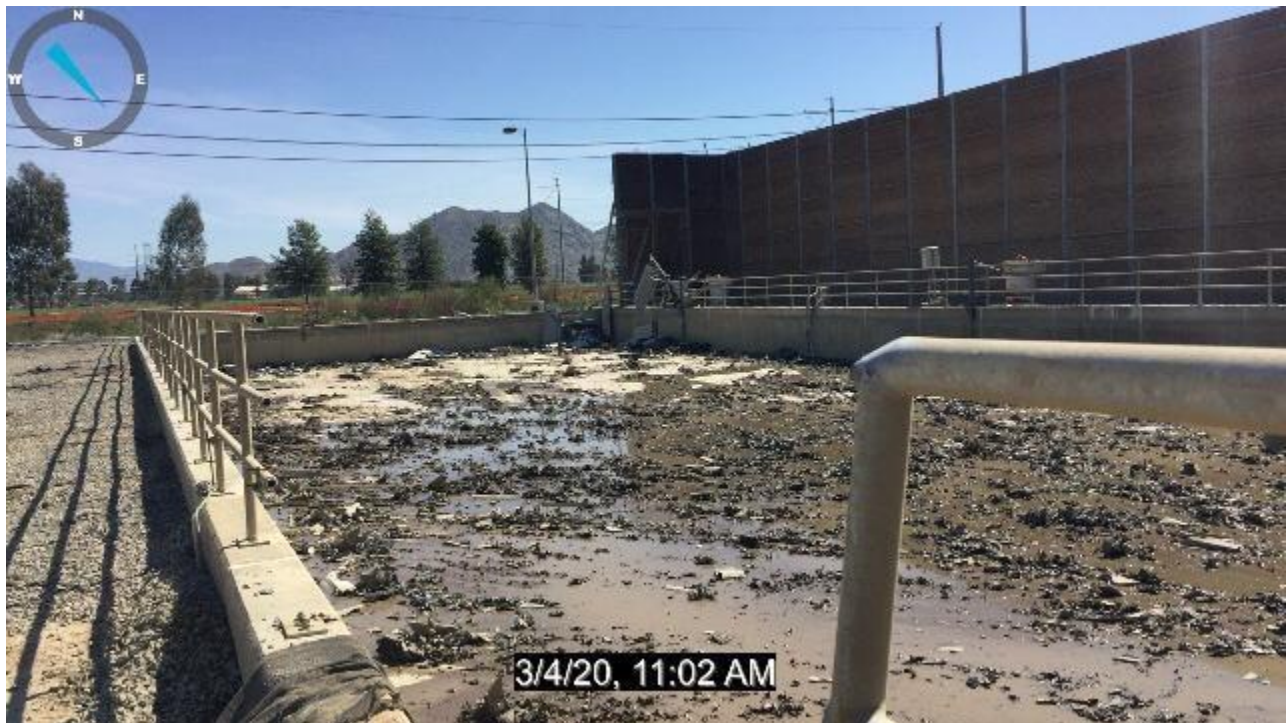
Debris from cooling unit facing west



2020/03/04 08:46:03

33.73768 -117.16765

Work near owl buffer, looking west.



2020/03/04 11:02:31

33.73594 -117.17258

After clearing of debris, facing east

**Inland Empire Energy Center Project  
Pre-Construction Biological Survey Form**

Date: March 9, 2020	Observer: Paulette Loubet Designated Biologist (DB)	Start Time: 06:30 End Time: 14:00	Page 1 of 6
Visibility (circle one): Good			
Precipitation (circle one): None			

**Description of Area Surveyed (attach map or include GPS coordinates):**

0630 attended tailboard and safety training. DB reminded crew about nest buffers and checking for nests after the long weekend.

0705 start site check. Surveyed around water tanks to be demolished. No nesting activity observed.

Observed a pair of kestrels matting on top railing of unit 1 Continued site check around south retention basin and fence line. Surveyed east retention basin. Observed barn owl in box, could see owl in back of box. Surveyed around areas of soft demo at unit 2 Surveyed inside unit 2, no activity at spring boxes or old stick nests.

0820 Silverado asked DB if they could send a crew to pick up trash within the barn owl nest buffer with brooms and a skid steer. DB monitored clean up until 1055. No disturbance of the owl was observed.

1100 crews stopped for lunch. DB continued site of unit 1, courtyard, Silverado yard and along northern perimeter. Observed the great horned owl has at least two chicks. Female on edge of nest, chicks eating and moving. Male was not observed.

1200-1300 DB monitored as crew continued to move trash out of buffer by hand and with skid steer.

1300-1350 DB attended Silverado, GE and ATC weekly meeting and gave an update on the owls.

1400 DB left site

**Habitat Description:**

Developed portions of the site and water retention basins.

**Species Observed (attach additional sheet if necessary):**

<b>Animals</b>
Barn owl, lesser goldfinch, kestrel, raven, house finch, song sparrow, red tailed hawk, pigeon, Anna's humming bird, yellow rumped warbler, great horned owl, white crowned sparrow, Say's phoebe, starling, mourning dove, northern rough wing swallow, house sparrow, northern mocking bird, lesser goldfinch, red winged black bird, bushtit, Cassin's kingbird, black phoebe,

**Site Information**

Overall habitat quality: Poor: Site is entirely developed besides basins
Current land use: Inland Empire Energy Center
Surrounding land use: Open fields, urban/residential development and commercial/industrial
Visible disturbance: Urban development, demolition activities, and roads
Threats: Demolition activities
Comments:



**Photographs:**



2020/03/09 07:09:03

Water towers to be demolished. Crews torching today.



2020/03/09 07:18:30

33.73603 -117.17244

Larger water tower, facing north.



2020/03/09 07:40:19

Barn owl box and cooling tower debris pile, looking west.





2020/03/09 07:43:10

33.73797 -117.16808

Barn owl buffer still in place on access road.



2020/03/09 10:20:26

33.7393 -117.17044

Confirmed at least two great horned owl chicks in Unit 1.

**Inland Empire Energy Center Project  
Pre-Construction Biological Survey Form**

Date: March 16, 2020	Observer: Paulette Loubet Designated Biologist (DB)	Start Time: 07:09 End Time: 14:40	Page 1 of 7
Visibility (circle one): Good			
Precipitation (circle one): None			

**Description of Area Surveyed (attach map or include GPS coordinates):**

0700 attended Silverado safety meeting and checked in with crew about scheduled work  
 0720 started weekly site check, all water tanks demolished and scrap in cooling unit basin. Surveyed both detention basins, barn owl observed to be still in box. Surveyed around unit two and "courtyard", crews mostly torching and doing prep work. Observed starling bring nest material to cable box on north side of gantry lift (unit two). Surveyed around unit one and checked on great horned owls. chicks getting bigger, female on nest male in rafters to east. Surveyed Silverado yard, no bird activity observed.  
 0950 Silverado foreman (Miguel) asked DB to monitor great horned owl nest while they worked near buffer.  
 1000 Silverado torching near buffer  
 1020 monitoring observed 3 chicks in nest  
 1045 female got out of nest, preened for a minute then went back into nest  
 1100 crews stopped for lunch  
 1156 Crew started back from lunch at work site just outside of great horned owl buffer. Male owl sleeping in rafters female on nest with chicks.  
 1203 started torching crossway on north end, outside of buffer  
 1230 Excavator with sheers came in to cut torched beams. Male owl moved away from roosting spot and female very alert. After did not move. DB determined "no work buffer" to be 120 feet on the south and southeast side into courtyard.  
 1247 done doing separation and cleaning up debris with bobcat  
 1300 stopped monitoring and checked in with Silverado (Miguel) told crew to not drop debris on steel plates and can't use sheers any closer than crossway (~120 ft). DB checked in with Silverado construction manager (Brian) about no work buffer around owls. DB walked no work buffer area with Mike and Miguel to determine work limits. Miguel said they would move the truck loading away from the buffer and remind crews to work as quietly as possible. Rest of day crews would be cleaning up and prepping for next day.  
 1420 DB and Silverado (Mike) went to the second floor of the admin building to try to observe any potential nesting in the small stick nest in a tree on the east side of the building. The DB confirmed the nest was inactive and approved for the nest to be removed.  
 1440 DB left site.

**Habitat Description:**

Site very muddy, site check of entire work area and yard. Vegetation in detention basins growing in.

**Species Observed (attach additional sheet if necessary):**

<b>Animals</b>
Common raven, starling, Say's Phoebe, white crown sparrow, barn owl, pigeon, house finch, bushtit, meadow lark, song sparrow, kestrel, great horned owl, black phoebe, red tailed hawk, northern rough wing swallow, house sparrow

**Site Information**

Overall habitat quality: Poor: Site is entirely developed besides basins
Current land use: Inland Empire Energy Center
Surrounding land use: Open fields, urban/residential development and commercial/industrial
Visible disturbance: Urban development, demolition activities, and roads
Threats: Demolition activities
Comments: None

**Photographs:**

2020/03/16

07:47:35

33.73865 -117.16292

Water in retention basins after recent rain events





2020/03/16

07:54:24

Debris stockpiled for removal in west end of cooling tower basin



2020/03/16

08:13:35

Example of tarped equipment.



2020/03/16

08:14:22

Demolition of East side of unit 1





2020/03/16

08:31:34

33.74096 -117.16696

Demolition on east end of unit two





2020/03/16

08:39:49

33.73932 -117.1709

Excavator in courtyard moving debris.

**Inland Empire Energy Center Project  
Pre-Construction Biological Survey Form**

Date: March 30, 2020	Observer: Paulette Loubet Designated Biologist (DB)	Start Time: 07:10 End Time: 09:50	Page 1 of 6
Visibility (circle one): Good			
Precipitation (circle one): None			

**Description of Area Surveyed (attach map or include GPS coordinates):**

0710 DB arrived on site.

0715 Started full site check, crews mostly working to clean up the site, no hauling till later in the week. Crews demoed most equipment and structures in the courtyard on the north west side. Surveyed around front buildings, down access road to cooling tower, around cooling tower and southern retention bond. Ponds holding quite a bit of water. Continued site check of east side of cooling tower and retention pond. Observed two barn owls in box, both appear to be adults. Continued site check around Unit 1, court yard, hazmat shed, around Unit 2 and the Silverado yard. DB observed that several structures in the courtyard on the north west side along the road (within the 120 foot great horned owl nest buffer) had been removed.

DB checked on great horned owls in Unit 2, observed both adults and all three chicks (4-5 weeks old). No work currently occurring in Unit 2.

After completing the full site check the DB reviewed the nest buffers with Silverado (Arron and Brian), and ATC (Andy) and CEC (Doug) were also present. The DB was updated on the onsite tasks for the next few weeks and will continue to do weekly site checks and get updates from ATC (Andy) throughout the week.

Silverado removed the inactive stick nest in the tree near the admin buildings. DB reminded Silverado (Arron and Brian) to keep removing sticks from raven nest location on north side of Unit 2. No new nests were observed onsite. Before leaving the DB asked ATC (Andy) to update Bill on what was discussed regarding the owl nest buffers.

0950 DB left site

**Habitat Description:**

Developed portions of the site as well as water retention basin and surrounding areas

**Species Observed (attach additional sheet if necessary):**

<b>Animals</b>
Common raven, house finch, black phoebe, white crown sparrow, bushtit, kingbird, European starling, house sparrow, kestrel, barn owl, yellow rumped warbler, great horned owl, rock pigeon, mourning dove

**Site Information**

Overall habitat quality: Poor: Site is entirely developed besides basins
Current land use: Inland Empire Energy Center
Surrounding land use: Open fields, urban/residential development and commercial/industrial
Visible disturbance: Urban development, demolition activities, and roads
Threats: Demolition activities
Comments: None

**Photographs:**

Photo of southwest corner of Unit 2, showing ESA sign in place for nest buffer.

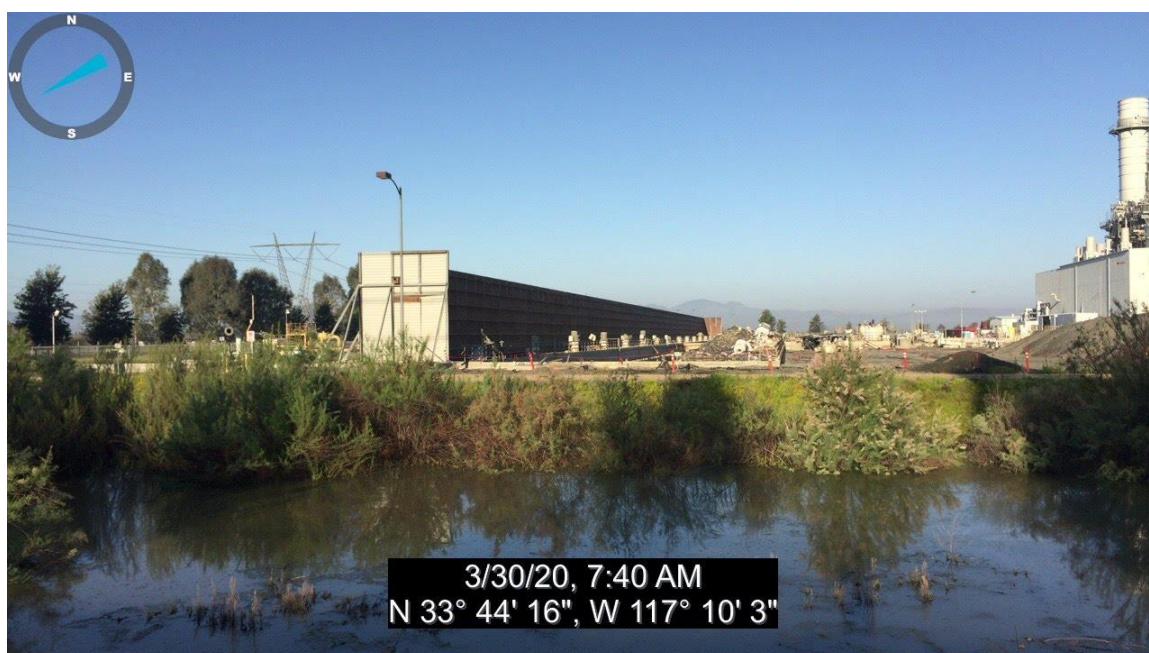


Photo of southwest corner of Unit 1, showing equipment and scrap pile.





Southern water retention basin, facing north.



Eastern retention basin facing west.



Barn owls in box on remaining wall of cooling unit.



Great horned owls in Unit 2. One of three chicks (left) and Adult (right).





Demo in courtyard within owl nest buffer.



Photo of back of Unit 1 and 2 from eastern side of site.





Photo of courtyard from second level of Unit 2, facing south.

**Inland Empire Energy Center Project  
Pre-Construction Biological Survey Form**

Date: March 3, 2020	Observer: Paulette Loubet Designated Biologist (DB)	Start Time: 10:50 End Time: 16:25	Page 1 of 6
Visibility (circle one): Good			
Precipitation (circle one): None			

**Description of Area Surveyed (attach map or include GPS coordinates):**

East side of remaining cooling tower wall.

10:50 DB arrived on site and checked in at front office. Security guard said they had not observed any owls this AM. DB checked in with Silverado (Miguel) to update about buffer monitoring process.

11:07 crew going to load one more truck then work on modules

11:20 can see owls face in back of box. Crew working to load debris into trucks outside of buffer.

11:50 crew moved out of debris pile and work somewhere by unit 1 for a while

11:59 wind picked up and banged the doors owl did not react 1207 can see owls face in back of box

12:23 excavator back working to remove debris outside of buffer Can see just top of owls head

1240 start to remove debris out of buffer

1200 could see owls face every once in a while, but mostly sitting

1430 working outside of buffer. Can see owls face

1445 owl stood up in box and stretched wings then sat back down

1530 crews started cleaning up for the day DB checked in with Silverado foreman. Will need to monitor tomorrow morning until out of buffer. Bird boxes on N and NE side were inspected, photographed and had the opening closed up. DB showed Silverado were ravens nest in Unit 1 is to remove

1600 checked on great horned owls. One on nest one in rafters.

1625 DB left the site

**Habitat Description:**

Detention basin contains tamarisk, mule fat and some low growth.

**Species Observed (attach additional sheet if necessary):**

<b>Animals</b>
Barn owl, lesser goldfinch, kestrel, raven, house finch, song sparrow, red tailed hawk, pigeon, Anna's humming bird, yellow rumped warbler, Turkey vulture, great horned owl, white crowned sparrow, Says phoebe, starling, mourning dove

**Site Information**

Overall habitat quality: Poor: Site is entirely developed besides basins
Current land use: Inland Empire Energy Center
Surrounding land use: Open fields, urban/residential development and commercial/industrial
Visible disturbance: Urban development, demolition activities, and roads
Threats: Demolition activities
Comments: None



**Photographs:**



2020/03/03 10:55:39

33.73784 -117.16802

Cooling unit back wall and debris in buffer to remove, facing south west.



2020/03/03 12:44:09

33.73743 -117.16765

Photo of barn owl nest box facing west while crews remove debris



2020/03/03 11:38:20  
33.73743 -117.16763  
Barn owl in box



2020/03/03 15:14:54

33.74784 -117.16637

Debris being removed at the end of day outside the buffer, facing southwest





2020/03/03 16:26:06

33.73923 -117.17029

Great horned owls on nest and in rafters



**Inland Empire Energy Center Project  
Pre-Construction Biological Survey Form**

Date: March 2, 2020	Observer: Paulette Loubet Designated Biologist (DB)	Start Time: 07:00 End Time: 14:50	Page 1 of 8
Visibility (circle one): Good			
Precipitation (circle one): Light Rain			

**Description of Area Surveyed (attach map or include GPS coordinates):**

7000 DB arrived onsite. Upon arrival security personnel told DB they saw a white owl by the box a few days ago. Walked to cooling unit to start site check. Crews working to haul out debris from demo. Trucks coming in and out back/southwest gate.

0725 surveyed around southern retention basin, lots of birds foraging. Observed old inactive nest.

0740 surveyed along fence to east retention basin and observed owl box still on east end of cooling unit.

0805 DB asked Silverado construction manager Miguel to have crew inspect owl box. The boom lift was busy but the crew said they would go look as soon as possible and update the DB.

0810 DB observed two kestrels mating in air by Unit 1.

0820 Ben Kling approached the DB and said he saw the owls nesting in Unit 1. The DB went with Mr. Kling to check on the nest and observed one adult owl sitting in the corner containing the previously inactive raven nest. Another adult owl was observed in the rafters to the north of the nest. Both birds did not seem agitated by the visit. To get a better view of the nest the DB went up to the upper balcony the from the north side. The owl continued to sit on the nest and the DB was not able to determine if it was incubating eggs or if it had chicks. Due to the location of the nest, the observed behavior of the owls and the past history of the owls nesting at the plant the DB established a 100 foot buffer to the west and south if the nest and a 200 ft buffer within the East part of the structure and to the north.

0915 DB descended Unit 1 and observed two bald eagles fly over, one adult and one juvenile.

0920-1200 DB Surveyed along the east fence line, the court yard, and the Silverado yard.

1200 checked in with Bill Gibson and updated about nesting activity, buffers and procedures. The DB also went over all of the findings with Silverado (Brian Laurin and Michael Hernandez)

1225 Mr. Laurin informed the DB that the crews had checked the owl box on the cooling tower and observed a white owl (determined to be a barn owl) sitting on eggs. The DB informed the crew to leave the area and stop any work within a 300 foot buffer until the nest could be inspected further.

1300-1330 the DB Establish physical buffers around both owl nests with cones and signs

1330-1430 the DB walked the site with Mr. Hernandez to review all findings and show him which inactive nests can be removed.

1450 DB left site.

**Habitat Description:**

Developed portions of the site

**Species Observed (attach additional sheet if necessary):**

<b>Animals</b>
European starling, rock pigeons, Say's phoebe, common raven yellow rumped warbler, white crown sparrow, bushtit, house finch, lesser gold finch, lark sparrow, American kestrel, red tailed hawk, song sparrow, Cassin's kingbird, Anna's hummingbird, bald eagle, mourning dove, great horned owl, barn owl

**Site Information**

Overall habitat quality: Poor: Site is entirely developed besides basins
Current land use: Inland Empire Energy Center
Surrounding land use: Open fields, urban/residential development and commercial/industrial
Visible disturbance: Urban development, demolition activities, and roads
Threats: Demolition activities
Comments: N/A

**Photographs:**

2020/03/02 07:11:30

Cooling unit demoed, looking east



2020/03/02 07:05:35

South end of cooling unit demoed, facing south



2020/03/02 07:54:03

East basin and owl box on cooling unit facing west.





Example of nest buffer ESA sign.

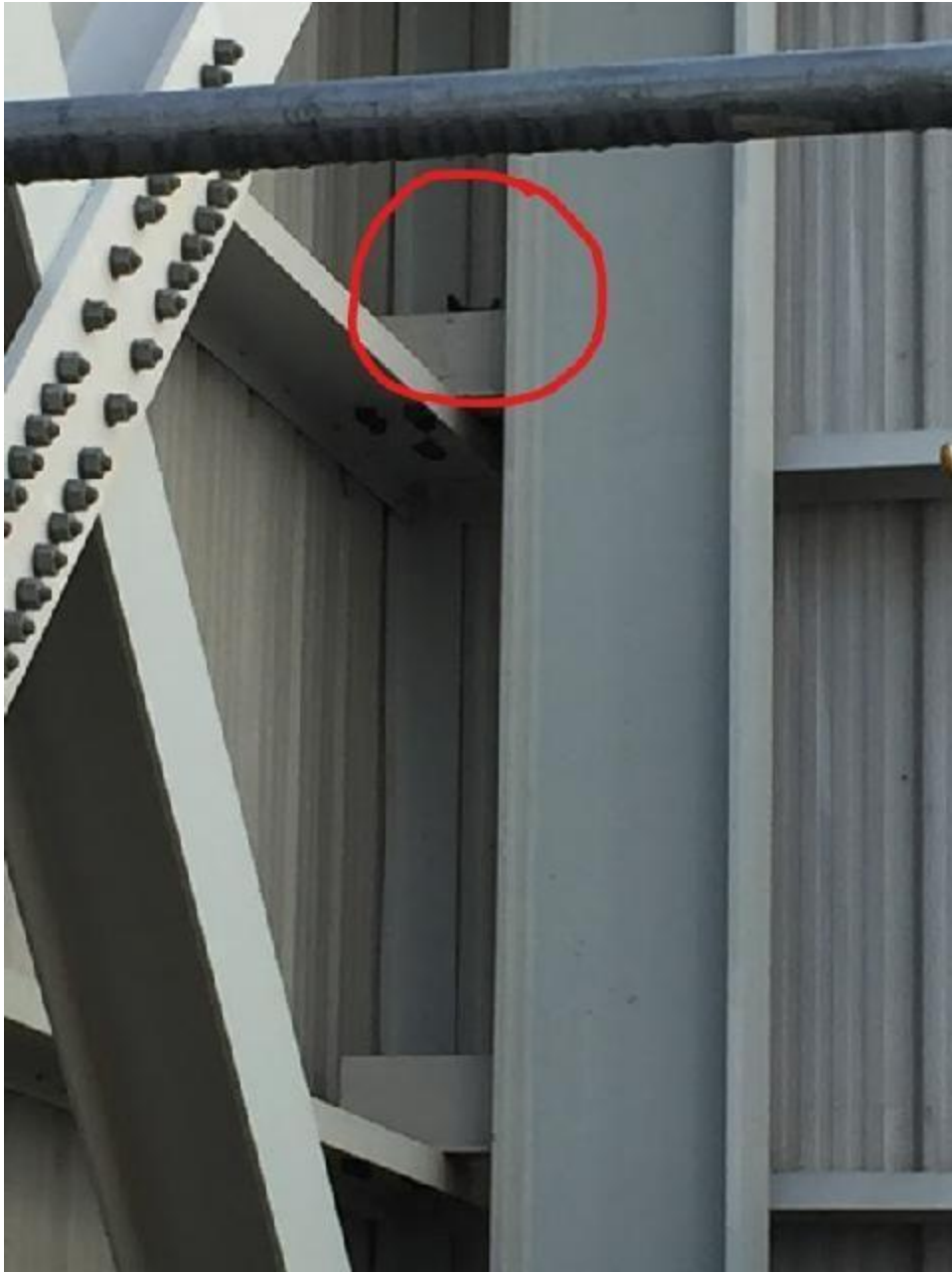




2020/03/02

17:54:58

Great horned owl nest in south west corner of unit 1



2020/03/02

17:54:52

Close up of Great horned owl nest in south west corner of unit 1, showing owl sitting on nest



2020/03/02

08:56:15

33.73907 -117.17051

Great horned owl on nest

***ATTACHMENT 2***  
***ENVIRONMENTAL TRAINING PROGRAM SIGN-IN SHEET***

---

# CERTIFICATE OF COMPLETION

Inland Empire Energy Center, LLC (IEEC)

Environmental Training Program Sign-in Sheet

Date: 2/24/2000

Instructor(s) Paulette Laubet

- ❖ I have attended the IEEC Environmental Training Program and understand the information I have been given.
- ❖ I understand that failure to abide by the procedures outlined in the Environmental Training Program may be cause for immediate dismissal from the project.
- ❖ I understand that it is illegal to disturb or destroy special-status plant and animal species or cultural resources, and that I will be held personally liable for any violations of the endangered species and cultural resource laws.
- ❖ I understand that I am required to display the Environmental Training Program hard hat decal at all times while I am on the construction site.

## PLEASE NOTE:

By signing below, I acknowledge that I have attended the Worker Environmental Awareness Training Program for IEEC and I agree to comply with all the environmental requirements presented.

Name (print)	Name (signature)	Company	EMP ID #	Badge #	Parking Permit #
Brian LACRIN	[Signature]	SILVERADO			
Michael Hernandez	[Signature]	Silverado			
Jimmy SANDWAR	[Signature]	SILVERADO			
Tony NUNEZ	[Signature]	SILVERADO			
Jorge GARCIA	[Signature]	Silverado			
MARCO MUCUSA	[Signature]	SILVERADO			
PAUL AVILA	[Signature]	ATC-C			
Andrey Palido	[Signature]	ATCGS			
BILL GLEASON	[Signature]	ATCGS			
Doug Simms	[Signature]	TRB			
Jorge Valenzuela	[Signature]	SCI			
Dan Perez	[Signature]	SCI			
Emmanuel Garcia	[Signature]	SCI			
JOSE DEL TORO	[Signature]	SCI			
Ricardo Sandoval	[Signature]	SCI			

STEVE HEARD

Sid Duran

Keith Knudsen

[Signature]

[Signature]

[Signature]

SCI

SCI

SCI