

DOCKETED

Docket Number:	09-AFC-06C
Project Title:	Blythe Solar Power Project - Compliance
TN #:	233004
Document Title:	BSPP Petition To Amend - Site Boundary Modification
Description:	N/A
Filer:	Scott Galati
Organization:	DayZenLLC
Submitter Role:	Applicant Representative
Submission Date:	5/17/2020 8:03:37 PM
Docketed Date:	5/18/2020

BLYTHE SOLAR POWER PROJECT
SITE BOUNDARY MODIFICATION
PETITION To AMEND



Submitted by:
NextEra Blythe Solar Energy Center, LLC

Submitted to:
California Energy Commission

May 2020

Prepared by:



1 INTRODUCTION

1.1 BACKGROUND

NextEra Blythe Solar Energy Center, LLC¹, Blythe Solar 110, LLC, Blythe Solar II, LLC, Blythe Solar III², LLC and Blythe Solar IV, LLC, (hereinafter collectively “Blythe Solar”) are the owners of the Blythe Solar Power Project (BSPP). Blythe Solar files this Petition To Amend (PTA) the Final Decision³ pursuant to Section 1769 of California Energy Commission (CEC) Regulations⁴.

This PTA requests the site boundary be modified to eliminate approximately 94 acres of vacant land located in the western portion of the current shared facilities area from the CEC Final Decision. As discussed in this PTA, the modification of the site boundary will not result in any significant environmental impacts and no modifications to the Conditions of Certification are necessary.

1.2 OVERVIEW OF THE PROPOSED MODIFICATION

The BSPP is located at 1000 Dracker Drive, Blythe, California 92225 in Riverside, California, on land administered by the Bureau of Land Management (BLM). The total acreage of the BSPP, as identified in the CEC Final Decision, is approximately 4,070 acres. This PTA seeks to modify the site boundary by relocating the western boundary of the shared facilities area as shown on Figures 1 and 2. The total acreage that would be eliminated from the Project Description would be approximately 94 acres of vacant land, thereby modifying the total acreage of the CEC Site to be approximately 3,976 acres.

¹NextEra Blythe Solar Energy Center, LLC is jointly owned by Blythe Solar 110, LLC, Blythe Solar II -, LLC, Blythe Solar III, LLC and Blythe Solar IV, LLC.

² The CEC is currently processing a Petition For Ownership Change to transfer all of the rights in Blythe Units 3 and 4 from NextEra Blythe Solar Energy Center, LLC to Blythe Solar III, LLC and to Blythe Solar IV, LLC, respectively.

³ References to the Commission Final Decision include all amendments approved after issuance and prior to the date of this PTA.

⁴ Title 20 CCR Section 1769.

1.3 PURPOSE AND NEED FOR AMENDMENT, BENEFITS

The purpose of relocating the westernmost boundary of BSPP is to provide additional property that may be developed for battery storage facilities. The battery storage facilities will not be directly connected to the solar fields and would not meet the definition of a thermal power plant. As such, the battery storage facility will not be subject to CEC jurisdiction and would be permitted by BLM through its ROW Grant administration process. Removing the westernmost portion of the shared facilities area that would house the independent battery storage facilities from the CEC Site would also avoid jurisdictional confusion.

1.4 MODIFICATIONS TO CONDITIONS OF CERTIFICATION

Blythe Solar does not believe any modifications to the conditions of certification contained in the Final Decision are necessary to approve this PTA and therefore none are proposed.

2 ENGINEERING ASSESSMENT

This section contains an evaluation of the modification proposed in this PTA to determine if it would result in modification of the findings, conclusions or conditions of certification for each technical discipline included within the Engineering Assessment section of the Final Decision.

2.1 FACILITY DESIGN

Modification of the site boundary would not change any component of the design of the BSPP nor would result in any operational changes when compared to how the solar fields would be operated.

3 PUBLIC HEALTH AND SAFETY

This section addresses whether modification of the site boundary proposed would require modification to the findings, conclusions or conditions of certification for each technical discipline included within the Public Health and Safety section of the Final Decision.

3.1 AIR QUALITY, GREENHOUSE GASES AND PUBLIC HEALTH

The site boundary modification does not affect any emissions from the BSPP and therefore does not result in modification to the findings, conclusions or conditions of certification in the areas of Air Quality, Greenhouse Gases, and Public Health.

3.2 WORKER SAFETY AND FIRE PROTECTION

The site boundary modification does not affect any of the findings, conclusions, or conditions of certification in the Worker Safety and Fire Protection section of the Final Decision.

3.3 HAZARDOUS MATERIALS

The site boundary modification does not affect any of the findings, conclusions, or conditions of certification in the Hazardous Materials Management section of the Final Decision.

3.4 WASTE MANAGEMENT

This site boundary modification does not affect any of the findings, conclusions, or conditions of certification in the Waste Management section of the Final Decision.

4 ENVIRONMENTAL ANALYSIS

This section contains an evaluation of the site boundary modification proposed in this PTA to determine if it would result in modification to any of the findings, conclusions or conditions of certification for each technical discipline included within the Environmental Assessment section of the Final Decision.

4.1 BIOLOGICAL RESOURCES

This modification to the site boundary does not affect any of the findings, conclusions, or conditions of certification in the Biological Resources section of the Final Decision because it does not propose any changes to operation of the BSPP. Additionally, all habitat compensation requirements have already been fulfilled.

4.2 SOIL AND WATER RESOURCES

The modification to the site boundary does not affect any of the findings, conclusions, or conditions of certification in the Soil and Water Resources section of the Final Decision because it does not modify the operation of the BSPP.

4.3 CULTURAL RESOURCES

The modification to the site boundary does not affect any of the findings, conclusions, or conditions of certification in the Cultural Resources section of the Final Decision because the modification will not change the operation of the BSPP.

4.4 GEOLOGICAL AND PALEONTOLOGICAL RESOURCES

The modification to the site boundary does not affect any of the findings, conclusions, or conditions of certification in the Geological and Paleontological Resources section of the Final Decision because it will not change the operation of the BSPP.

5 LOCAL IMPACT ANALYSIS

This section evaluates whether the modification to the site boundary proposed in this PTA would result in modification to any findings, conclusions or conditions of certification for each technical discipline included within the Local Impact Assessment section of the Final Decision.

5.1 LAND USE

The modification to the site boundary will not affect the findings and conclusions contained in the Land Use section of the Final Decision. Any land use authorizations for use of the property removed from the CEC Site would remain with the BLM.

5.2 NOISE AND VIBRATION

The modification to the site boundary does not affect any of the findings, conclusions, or conditions of certification in the Noise and Vibration section of the Final Decision because it will not change BSPP operations.

5.3 SOCIOECONOMICS

The modification to the site boundary does not affect any of the findings, conclusions, or conditions of certification contained in the Socioeconomic Resources section of the Final Decision because the modification does not change operation of the BSPP.

5.4 TRAFFIC AND TRANSPORTATION

The modification to the site boundary does not affect any of the findings, conclusions, or conditions of certification in the Traffic and Transportation section of the Final Decision because it will not require any changes to operation of the BSPP and site access remains unchanged.

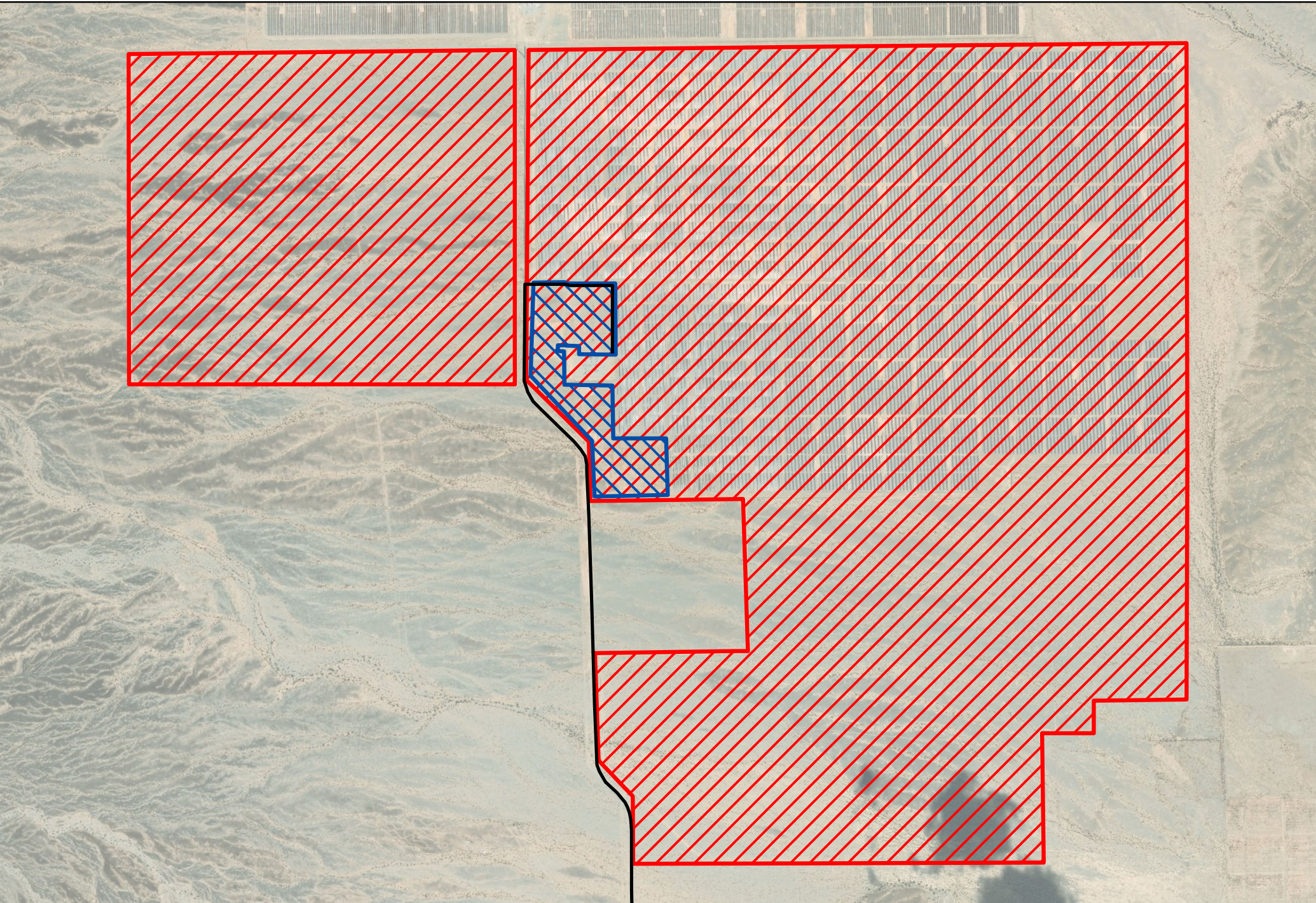
5.5 VISUAL RESOURCES

The modification to the site boundary does not affect any of the findings conclusions, or conditions of certification in the Visual Resources section of the Final Decision because it will not require changes to BSPP operations.

6 POTENTIAL EFFECTS ON PROPERTY OWNERS

The Commission's Power Plant Siting Regulations require a Petition To Amend to include 1) a discussion of how the modification affects the public; 2) a list of property owners potentially affected by the modification; and 3) a discussion of the potential effect on nearby property owners, the public and the parties in the application proceedings.

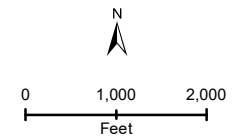
As described in technical area evaluated in Sections 2 through 5 of this PTA, the modification to the site boundary does not create any significant impacts, and it therefore would not affect the public differently than identified in the Final Decision. Therefore there are no property owners that are potentially affected by the PTA.

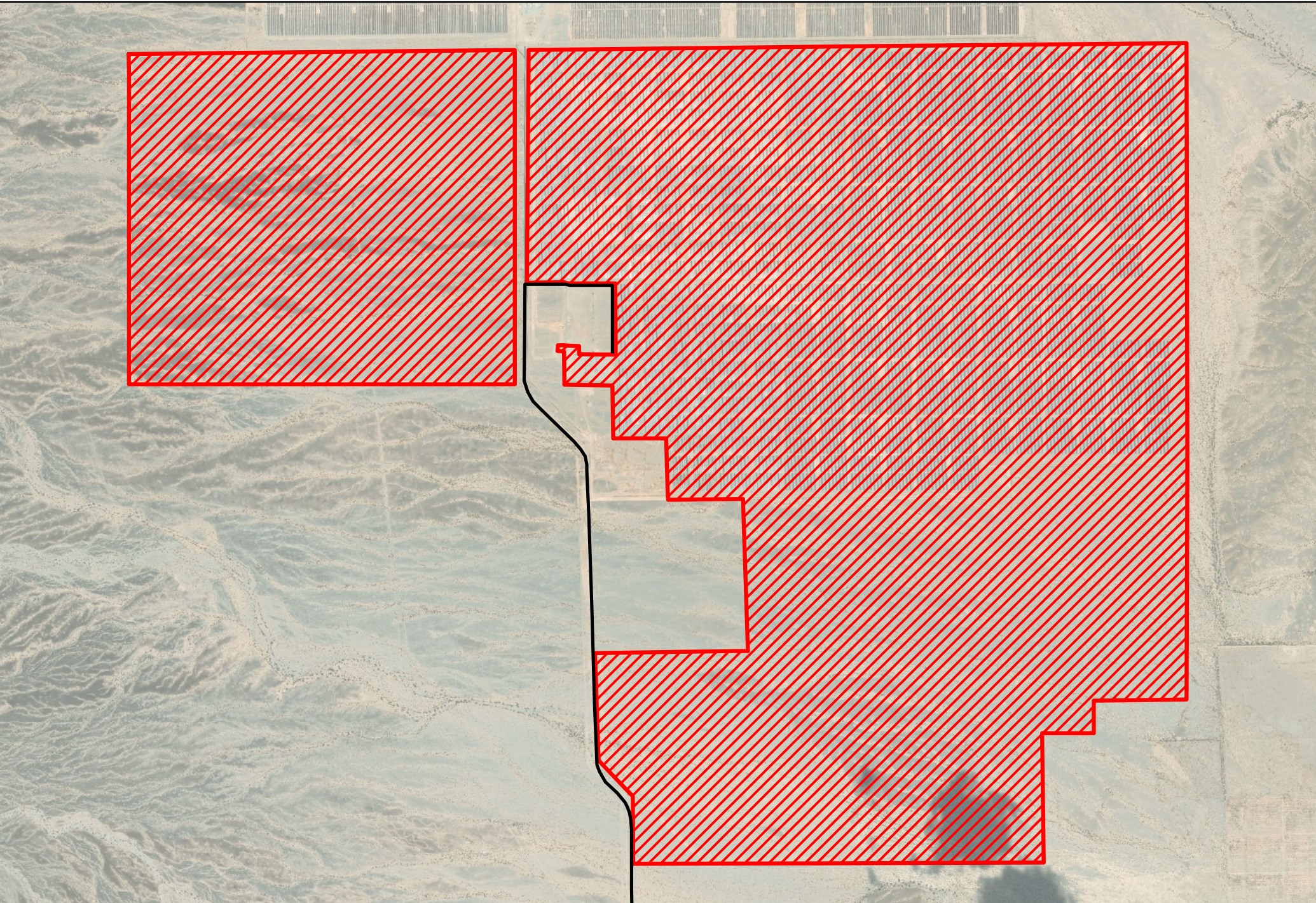


- Existing Access Road
- ▨ Existing CEC Site Boundary
- ▨ Area Being Removed from CEC Site

**Blythe Solar
Power Project**
Riverside County, California

FIGURE - 1





- Existing Access Road
- ▨ New CEC Site Boundary

**Blythe Solar
Power Project**
Riverside County, California

FIGURE - 2

