

## DOCKETED

<b>Docket Number:</b>	12-AFC-03
<b>Project Title:</b>	Redondo Beach Energy Project
<b>TN #:</b>	205103
<b>Document Title:</b>	Population Density Table and Mapping-updated
<b>Description:</b>	An update to the previously-filed mapping and table. Presents population density within 1-mile radius of six proposed coastal power plant projects.
<b>Filer:</b>	Lisa Worrall
<b>Organization:</b>	California Energy Commission
<b>Submitter Role:</b>	Commission Staff
<b>Submission Date:</b>	6/22/2015 3:29:40 PM
<b>Docketed Date:</b>	6/22/2015

**Note:** The previous mapping and table incorrectly included coastal water census blocks. The US Census Bureau sets coastal boundaries by extending census tracts and blocks out to a three-mile limit to include territorial seas. The updated mapping and table have been prepared without these coastal water census blocks. The area mapped and population density numbers have changed accordingly.

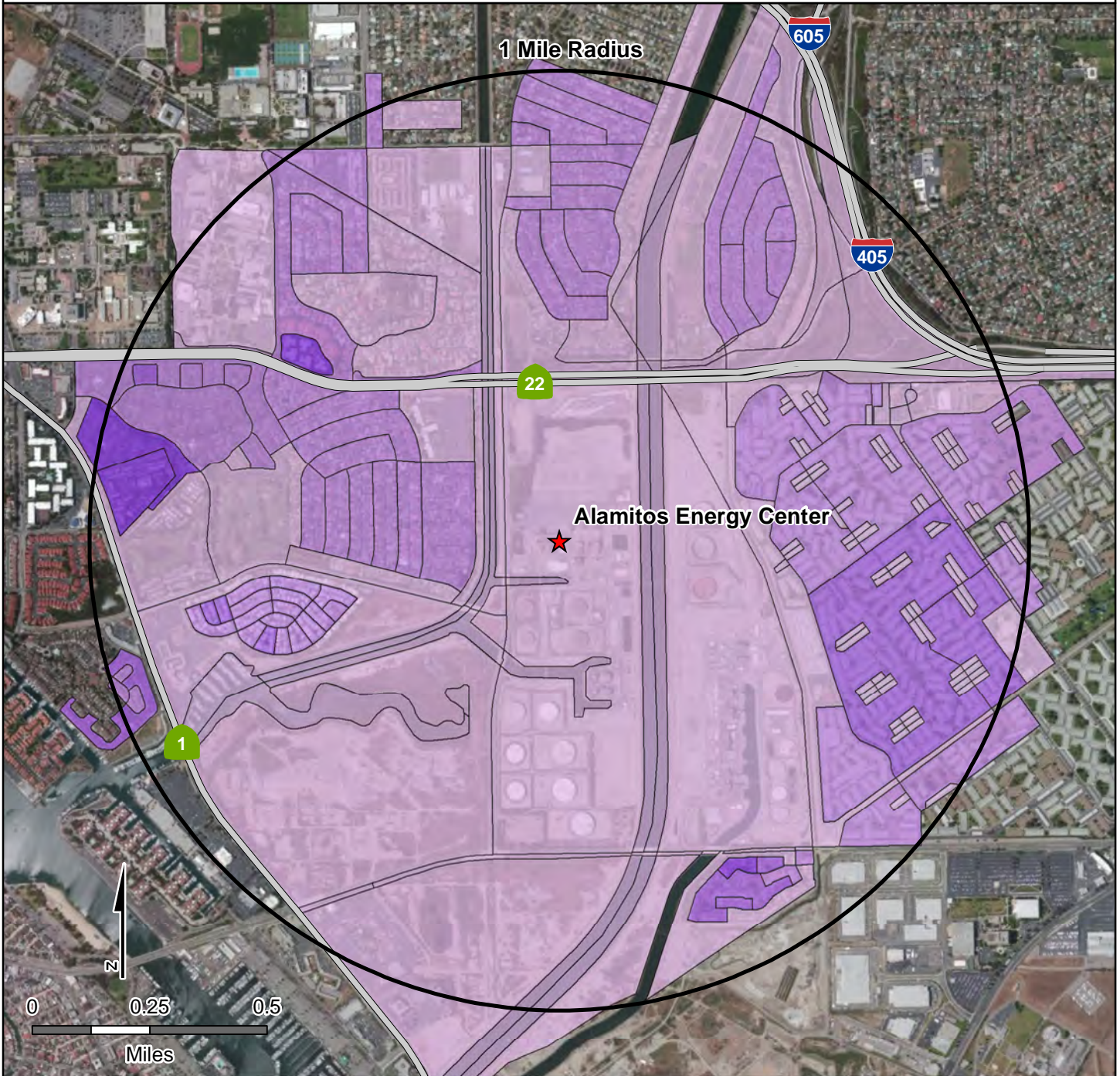
Select Power Plant	Population	Census Block Area (Mi <sup>2</sup> )	Population Density (Population/Mi <sup>2</sup> )
Alamitos Energy Center (13-AFC-01)	11,798	3.15	3,745.40
Carlsbad Energy Center (07-AFC-06)	6,648	2.53	2,627.67
El Segundo Energy Center (00-AFC-14)	6,760	2.19	3,086.76
Huntington Beach Energy Project (12-AFC-02)	8,731	1.72	5,076.16
Puente Power Project (P3) (15-AFC-01)	423	1.50	282.00
Redondo Beach Energy Project (12-AFC-03)	23,729	2.16	10,985.65

# Alamitos Energy Center (13-AFC-01)

Total Population: 11,798

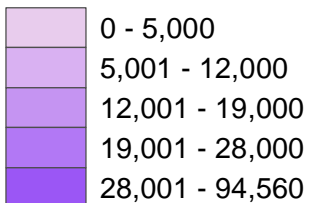
Total Census Block Area: 3.15 (Square Miles)

Population Density: 3,745.40 (Population/Square Mile)



## Population Density Per 2010 Census Block

### Population / Square Mile



Source: California Energy Commission & Census 2010 PL 94-171 Data

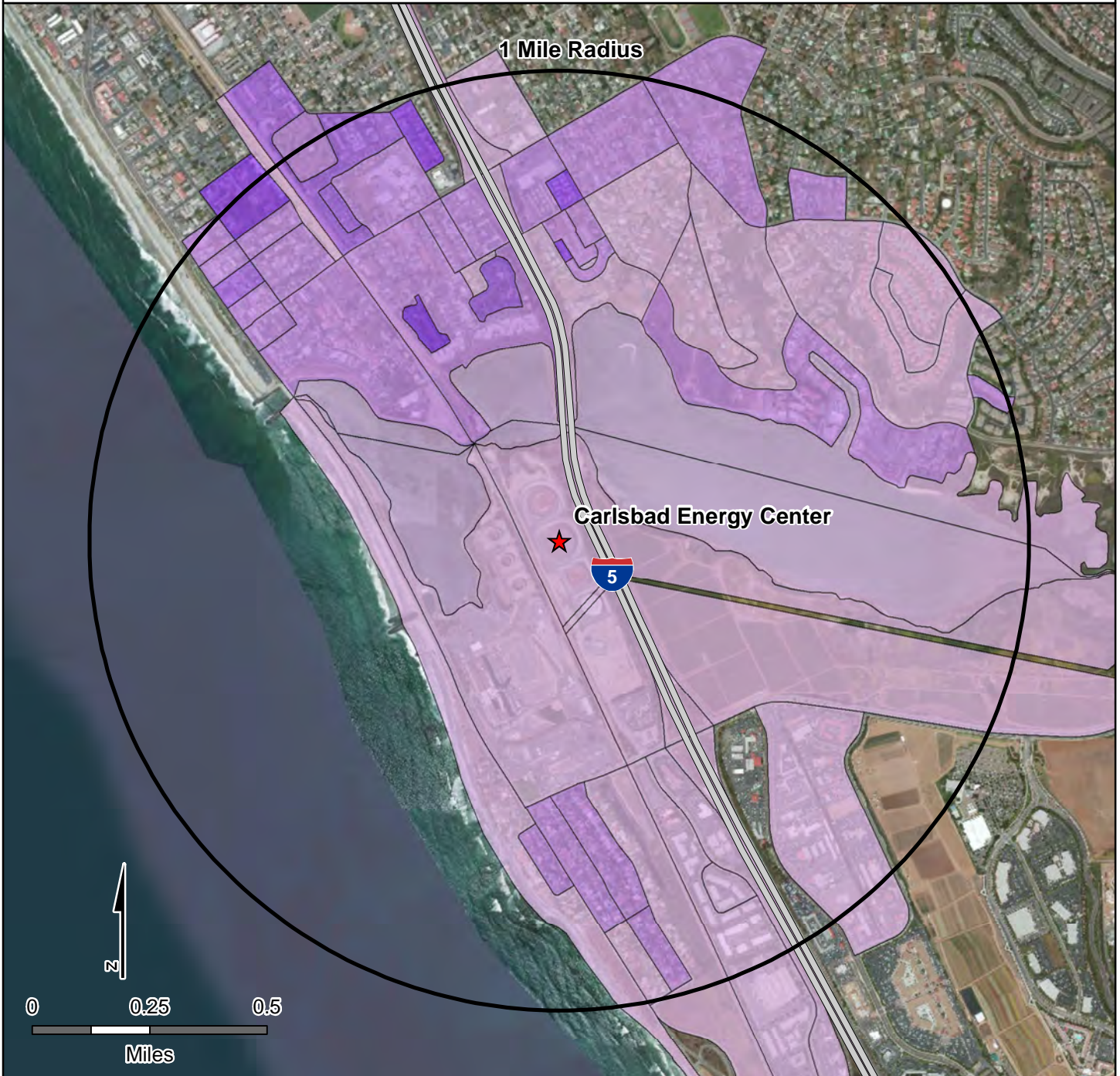


# Carlsbad Energy Center (07-AFC-06)

Total Population: 6,648

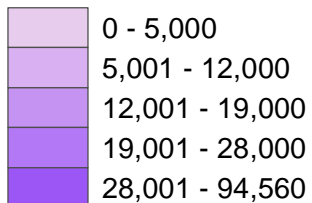
Total Census Block Area: 2.53 (Square Miles)

Population Density: 2,627.67 (Population/Square Mile)



## Population Density Per 2010 Census Block

### Population / Square Mile



Source: California Energy Commission & Census 2010 PL 94-171 Data

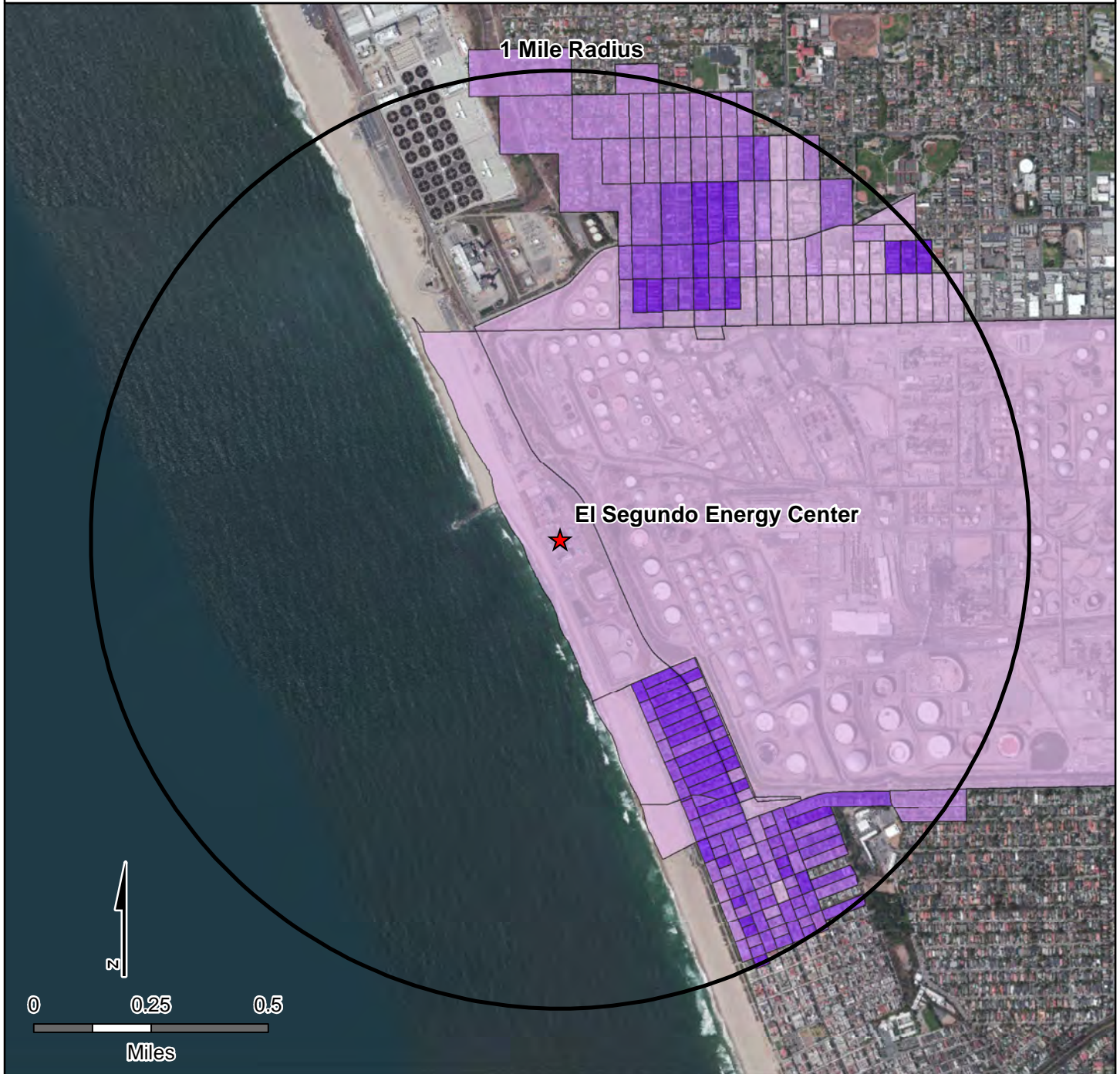


# El Segundo Energy Center (00-AFC-14)

Total Population: 6,760

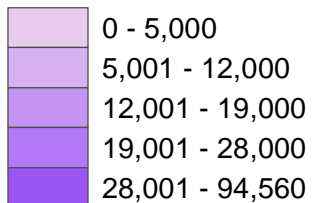
Total Census Block Area: 2.19 (Square Miles)

Population Density: 3,086.76 (Population/Square Mile)

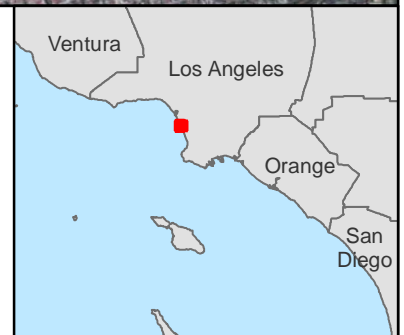


## Population Density Per 2010 Census Block

### Population / Square Mile



Source: California Energy Commission & Census 2010 PL 94-171 Data

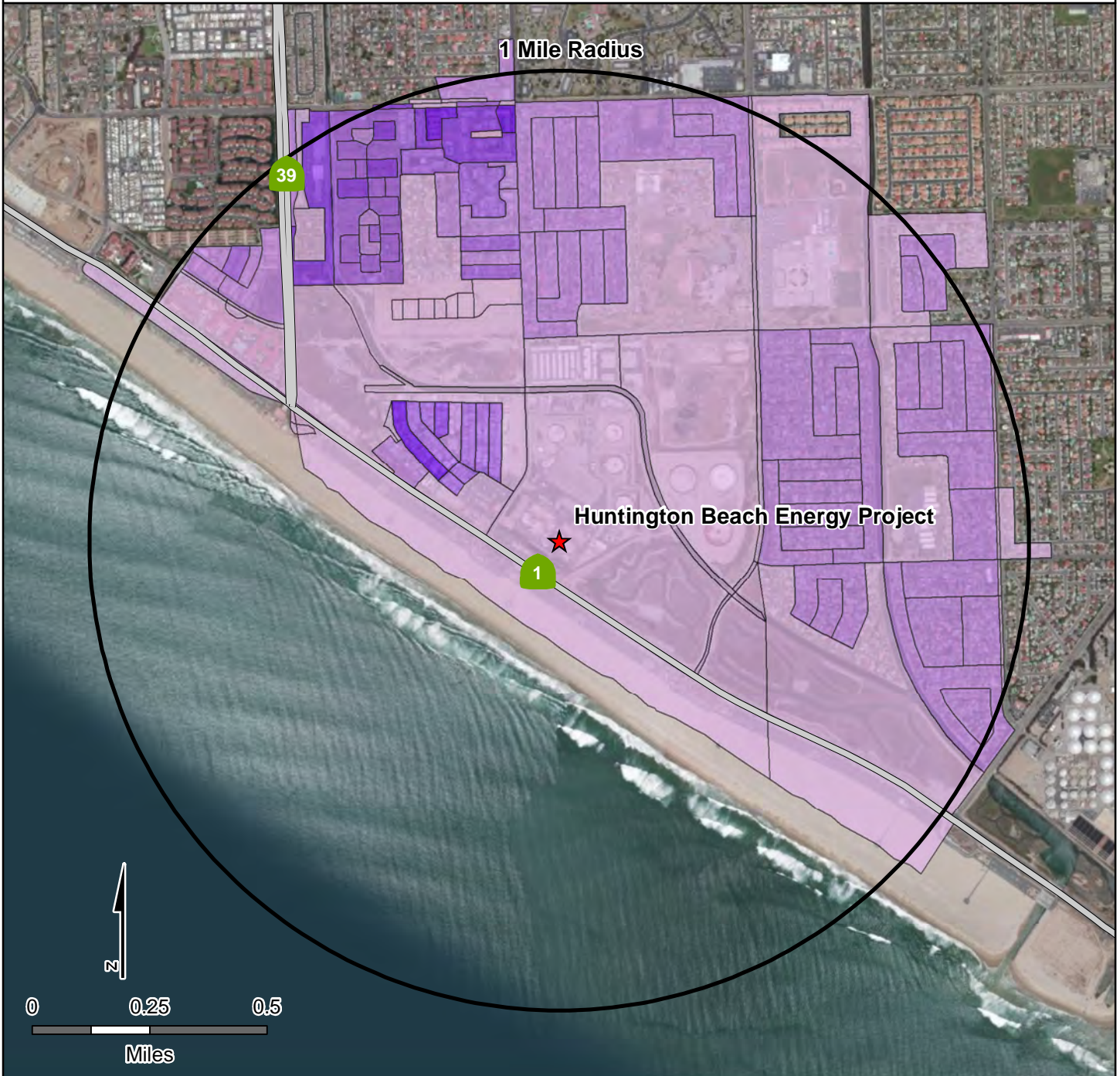


# Huntington Beach Energy Project (12-AFC-02)

Total Population: 8,731

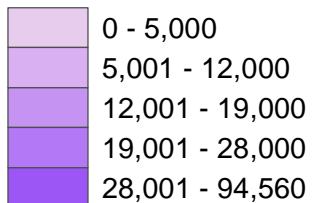
Total Census Block Area: 1.72 (Square Miles)

Population Density: 5,076.16 (Population/Square Mile)



## Population Density Per 2010 Census Block

### Population / Square Mile



Source: California Energy Commission & Census 2010 PL 94-171 Data

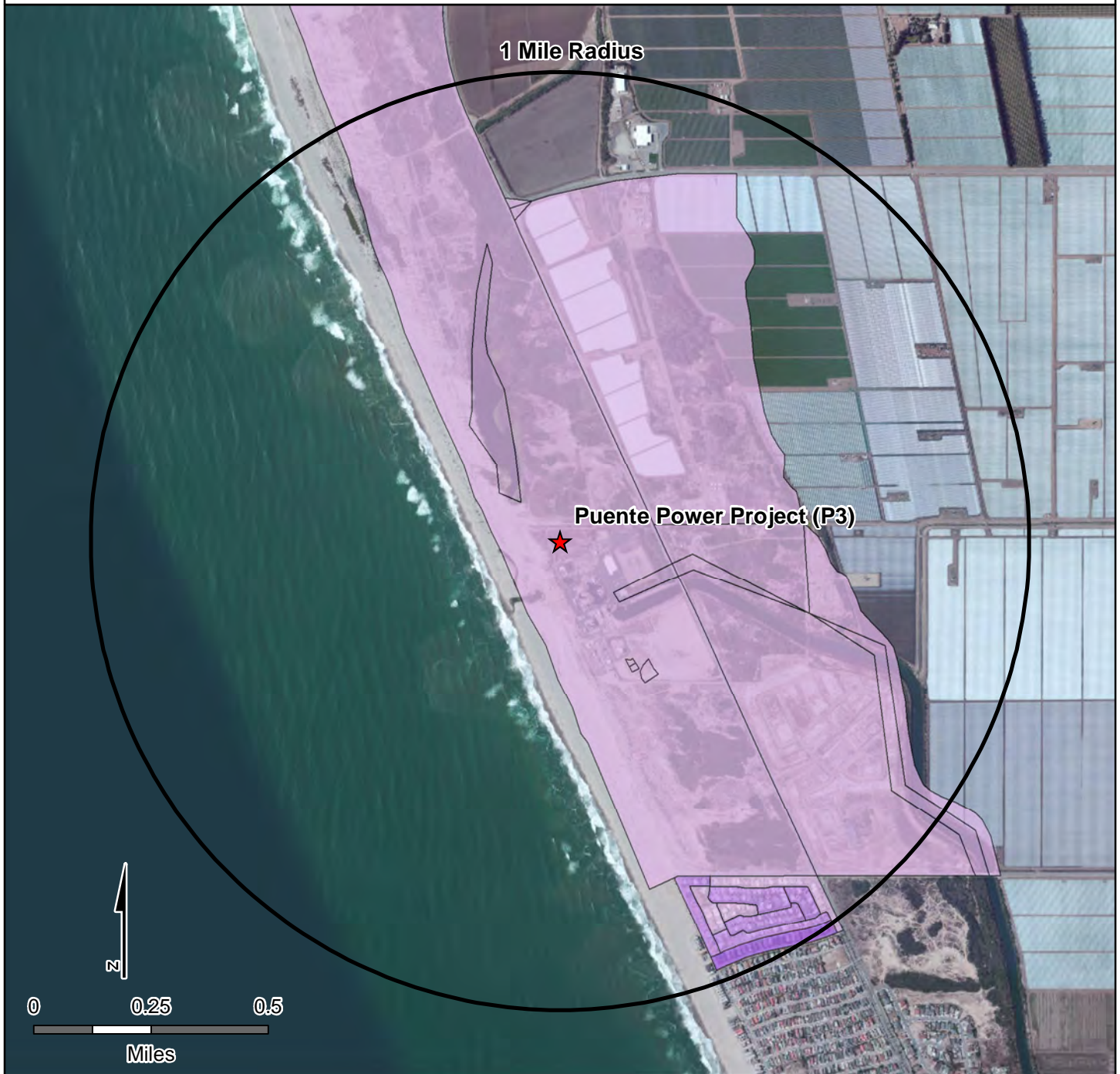


# Puente Power Project (P3) (15-AFC-01)

Total Population: 423

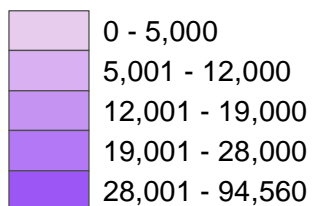
Total Census Block Area: 1.50 (Square Miles)

Population Density: 282.00 (Population/Square Mile)

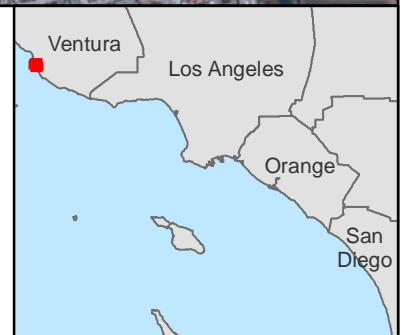


## Population Density Per 2010 Census Block

### Population / Square Mile



Source: California Energy Commission & Census 2010 PL 94-171 Data

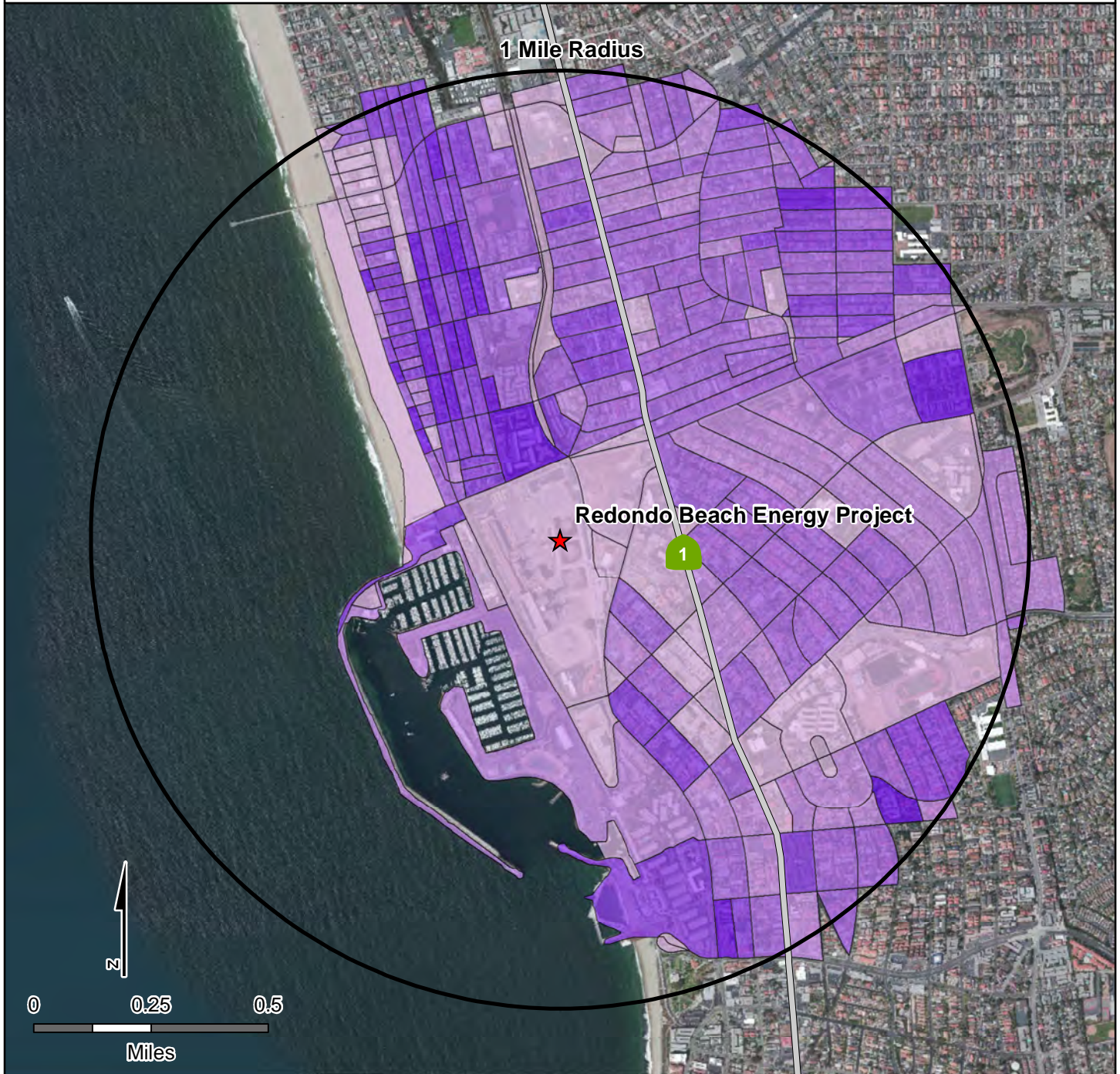


# Redondo Beach Energy Project (12-AFC-03)

Total Population: 23,729

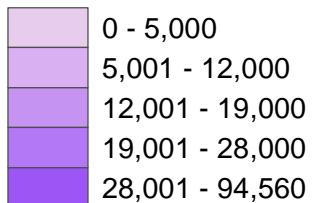
Total Census Block Area: 2.16 (Square Miles)

Population Density: 10,985.65 (Population/Square Mile)



## Population Density Per 2010 Census Block

### Population / Square Mile



Source: California Energy Commission & Census 2010 PL 94-171 Data

