

DOCKETED

Docket Number:	19-DECARB-01
Project Title:	Decarbonization
TN #:	231006
Document Title:	CEC - Building Decarbonization Efforts
Description:	N/A
Filer:	Junguang Lu
Organization:	California Energy Commission
Submitter Role:	Commission Staff
Submission Date:	12/5/2019 10:02:17 AM
Docketed Date:	12/5/2019

Building Decarbonization Efforts

California Energy Commission



Martha Brook
Senior Mechanical Engineer
Demand Analysis Office, Energy Assessments Division
California Energy Commission



CEC Efforts on Building Decarbonization

This presentation summarizes:

- Updates to Long-standing Regulations
- Implementation of New Legislation
- Key Assumptions for Electricity GHG Intensities
- Ongoing Research & Development



CEC Regulations & Building Decarbonization

- **Building Energy Efficiency Standards (Title-24)**
 - Working towards a **performance compliance path for all-electric systems**
 - New **source energy metric** proposed for 2022 title-24 Update
- **Appliance Energy Efficiency Standards (Title-20)**
 - AB 49 (Skinner, 2019) adds **demand flexibility** to scope of future regulations
- **Load Management Standards (Title-20)**
 - Adopted an Order Instituting Rulemaking in November 2019
 - Focus will be on **strategies and technologies to shift electric loads** for GHG reductions & cost savings
 - Regulations apply to all **Load Serving Entities** in California



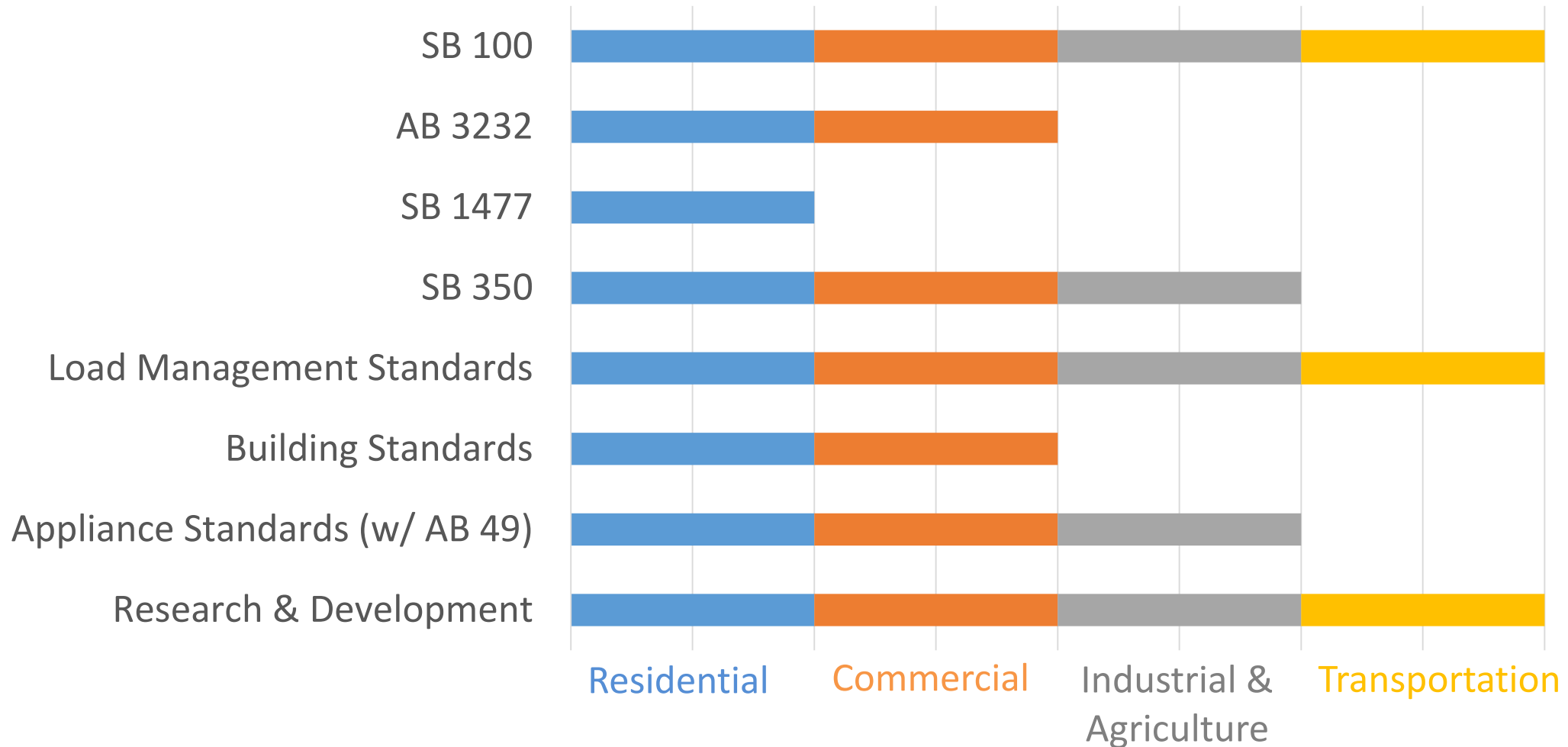
New Legislation & Building Decarbonization

- **SB 350** (De Leon, 2015)
 - Assess potential to double Energy Efficiency by 2030
 - Increases Renewable Portfolio Standard to 60% by 2030
- **SB 1477** (Stern, 2018)
 - Provides \$200M over 4 years for low emission residential new construction & existing residential heating
- **AB 3232** (Friedman, 2018)
 - Assess potential to reduce Building GHGs 40% below 1990 by 2030
- **SB 100** (De Leon, 2018)
 - 100% Zero Carbon Resources for Electricity Retail Sales by 2045



Decarbonization Policy Overview

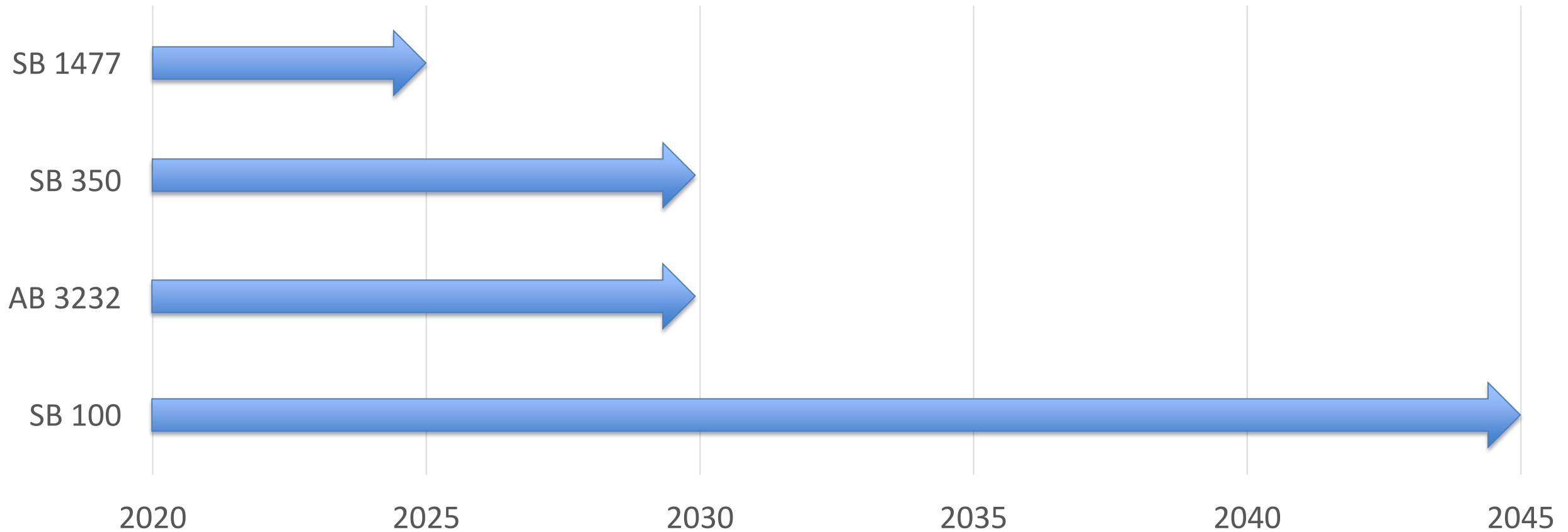
Sector Scope of Policy Instrument





Decarbonization Policy Overview

Planning Horizon of Policy Instrument





Assumptions for Current Electricity GHG Emission Intensities

Electricity Demand:

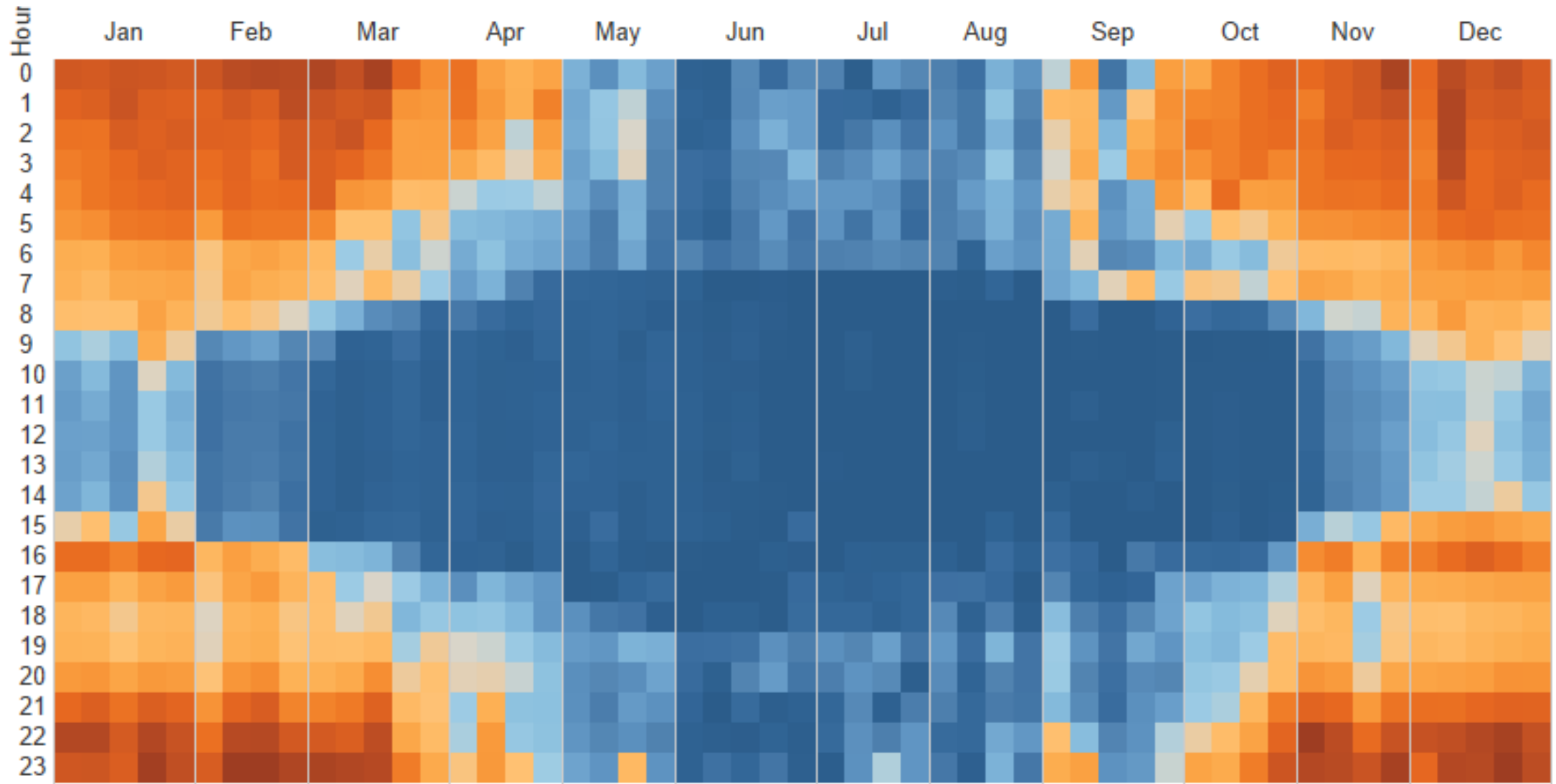
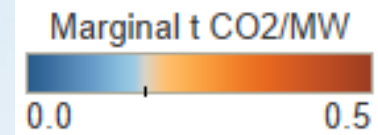
- 2030 natural gas consumption = 40% below 1990
- Electric heat pumps replace gas space and water heating
- No building envelope efficiency improvements
- No load shifting

Electricity Supply:

- 60% RPS by 2030
- 1200 MW battery storage to maintain traditional levels of resource margin
- Out of state renewables: 80% GHG free, 20% default (0.43 tCO₂/MWh)
- Long-term marginal emission intensities: reflects the change in generation resources needed to meet demand change



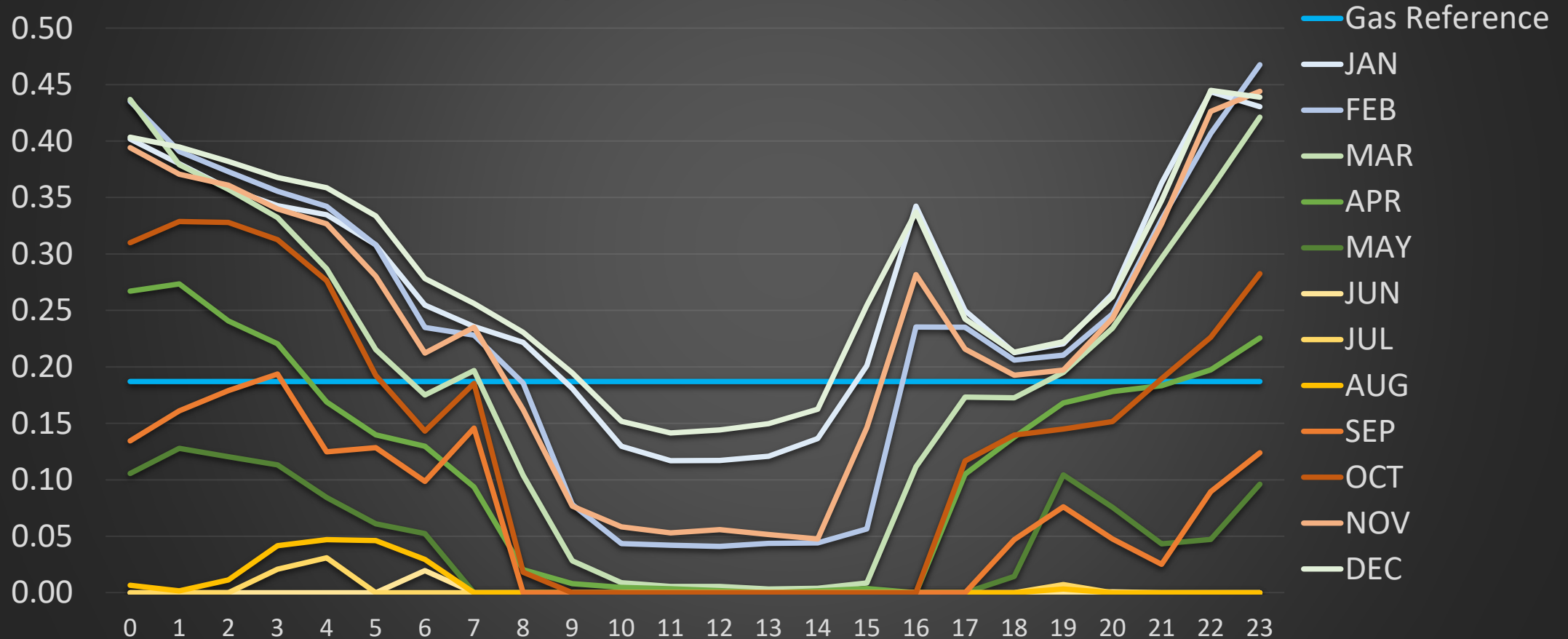
Electricity GHG Emission Intensities Relative to Natural Gas





Electricity GHG Emission Intensities Relative to Natural Gas

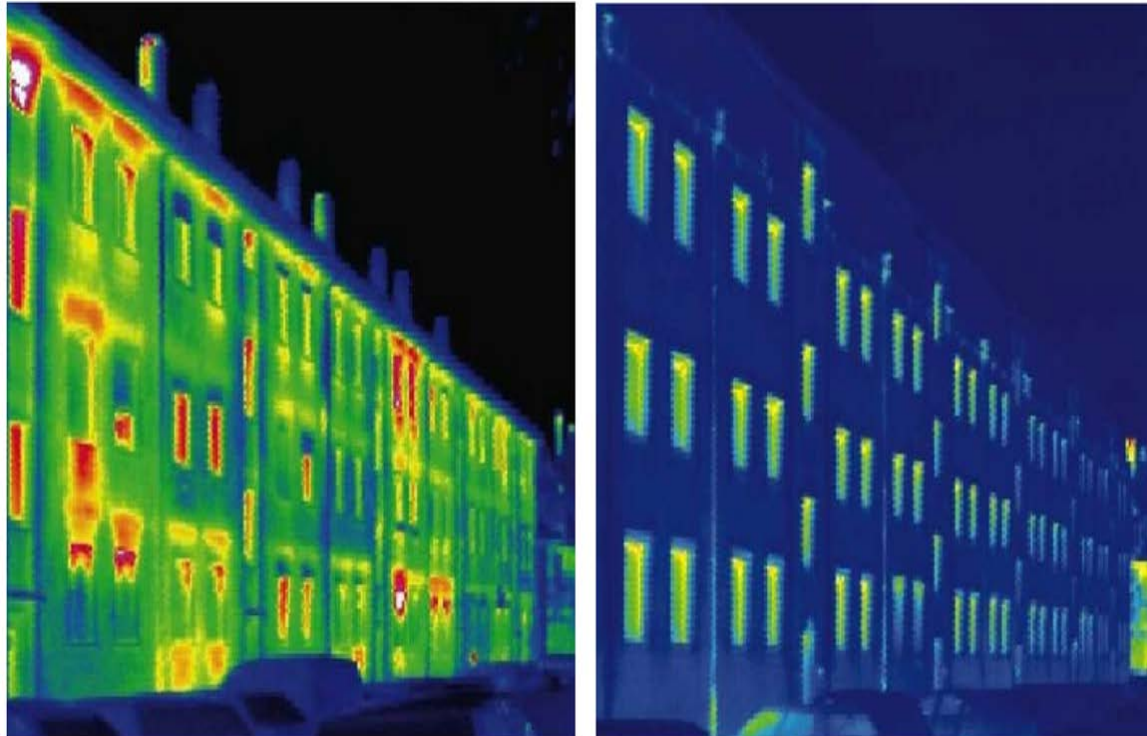
2030 Average Hourly
Long Term Marginal
Electricity Emission Intensity (tCO₂/MW)



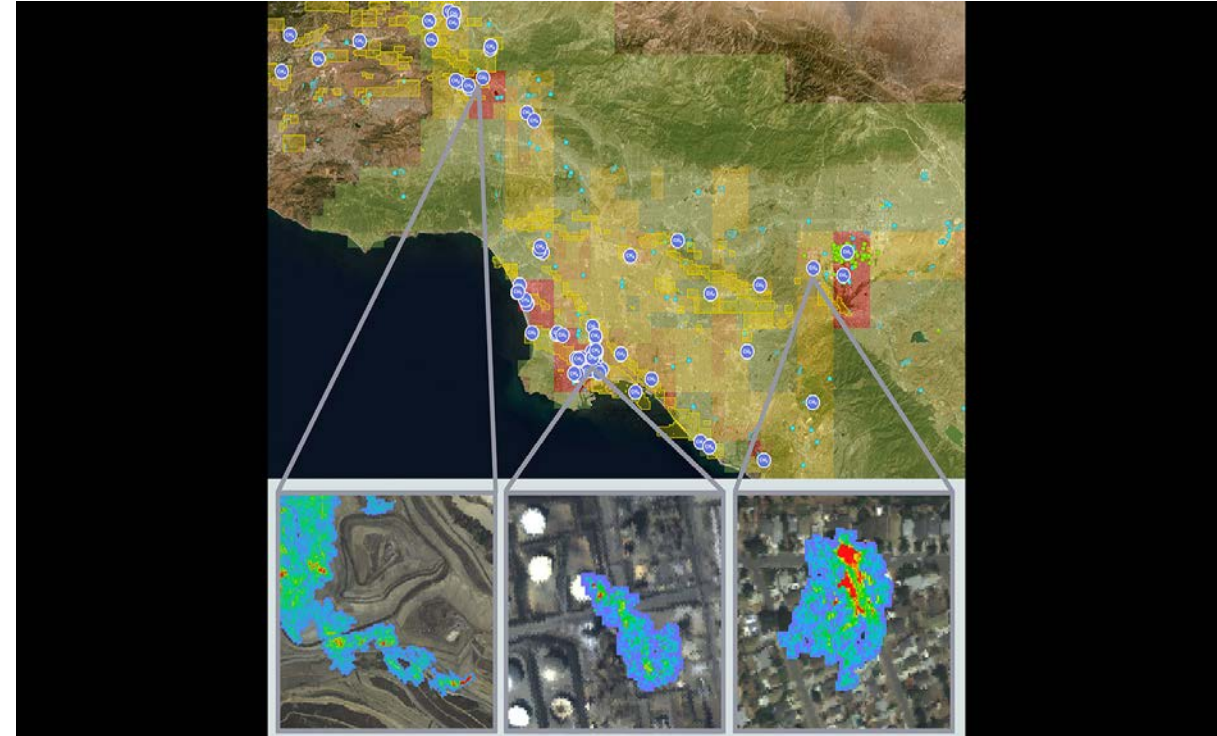


Ongoing Research & Building Decarbonization

Building End Use Efficiency Research



Energy-Related Environmental Research





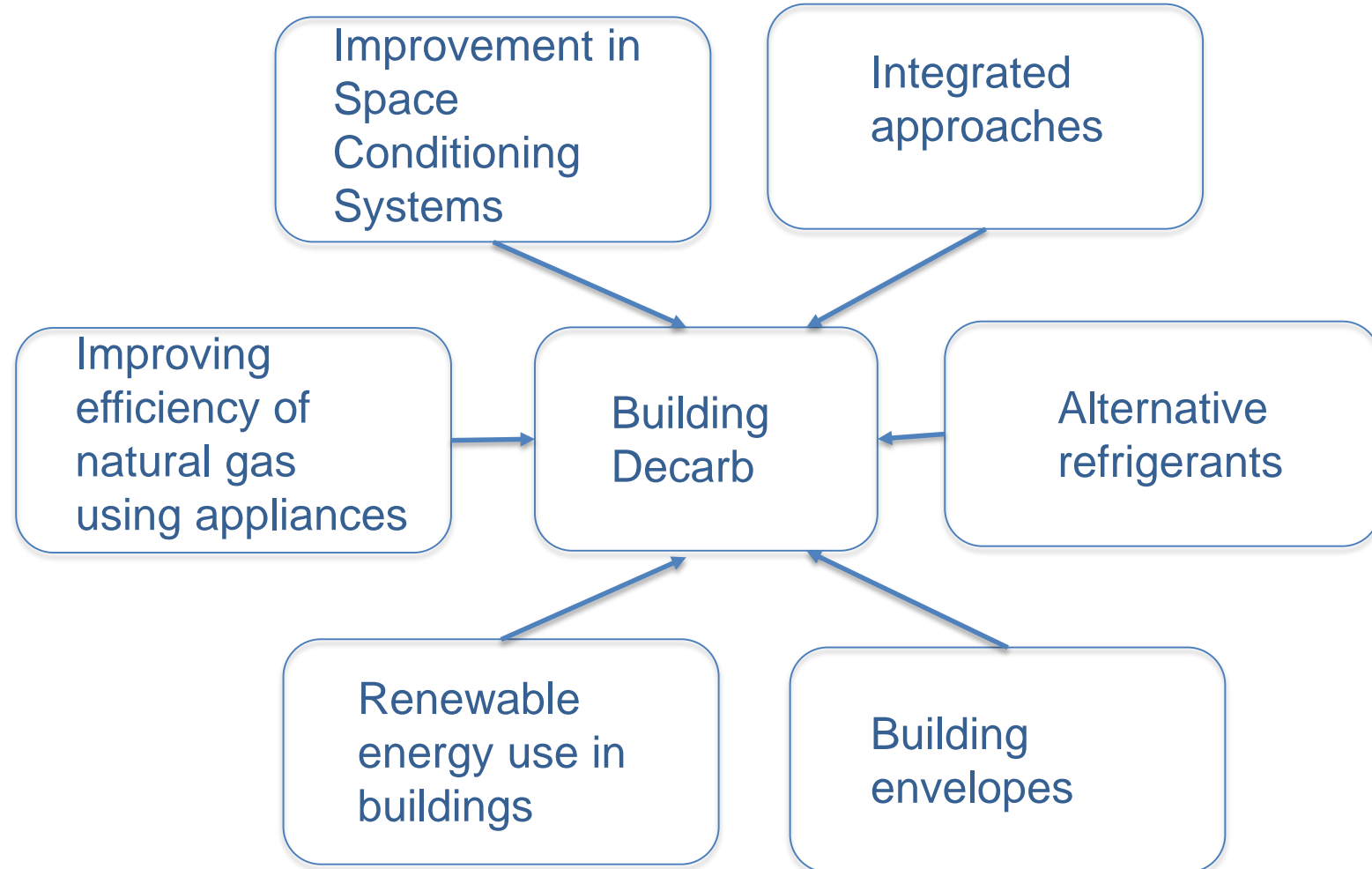
Advancing Low-Carbon Building Research

- **Challenges:**

- Cost of equipment and installation
- Consumer acceptance
- Concern about future bill increase

- **Goals:**

- Advance emerging technologies
- Document technical and economic performance
- Reduce installation, capital and operating costs
- Obtain real world feedback from consumers
- Ensure benefits to low income or disadvantaged communities





Advancements in Space Conditioning and Alternative Refrigerants

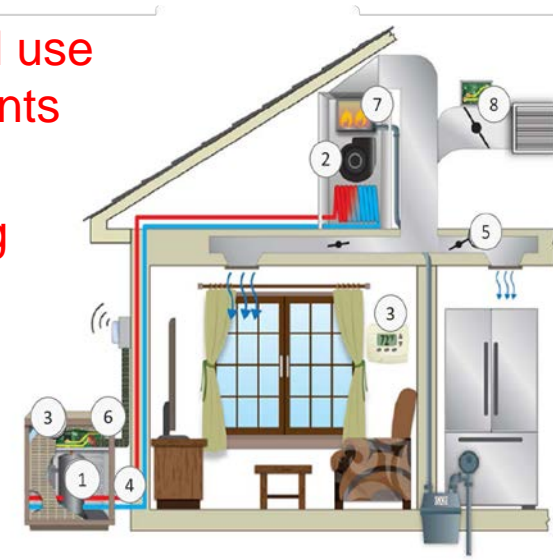
Commercial Building Space Conditioning (EPC-15-004)

- Develop and demonstrate **climate appropriate air conditioning system** that optimizes occupant comfort and reduce energy use and peak demand
- Includes **a combination of variable refrigerant flow technology with indirect evaporative cooling**
- Evaluate **applicability of low GWP refrigerants**
- Initial test results show electric savings of about 33%.



Residential Space Conditioning (EPC-14-021)

- Design and test **an advanced residential heat pump space-conditioning system**
- Includes variable-capacity compressor and variable speed fans, zonal ventilation control, and other efficient components
- **Evaluated applicability and use of low GWP R-32 refrigerants**
- Integrated HVAC system showed **22 to 32% cooling energy savings**





Integrated Approaches and Reducing Natural Gas Use

Integrated approaches: Customer-Centric Approach to Scaling Integrated demand side management (IDS) Retrofits (EPC-15-053)

- Develop and demonstrate an approach to **scale multifamily retrofits in disadvantaged communities that focus on customer needs with minimal disruption to occupants**
- Demonstration sites: Ontario and Fresno



Improvements in Natural Gas Use: Demonstrating Natural Gas Heat Pumps for Integrated Hot Water and Air-Conditioning in **Restaurants** (PIR-16-001)

- Goal is to **demonstrate a 40% reduction in natural gas usage and offset 20% of the air conditioning cost.**
- Pilot sites: two full-service restaurants in Southern California
- Preliminary data shows gas heat pumps able to meet 80% of the hot water demand for the restaurants. M&V to continue for 12 months





Advancements in Building Envelopes and Solar Thermal

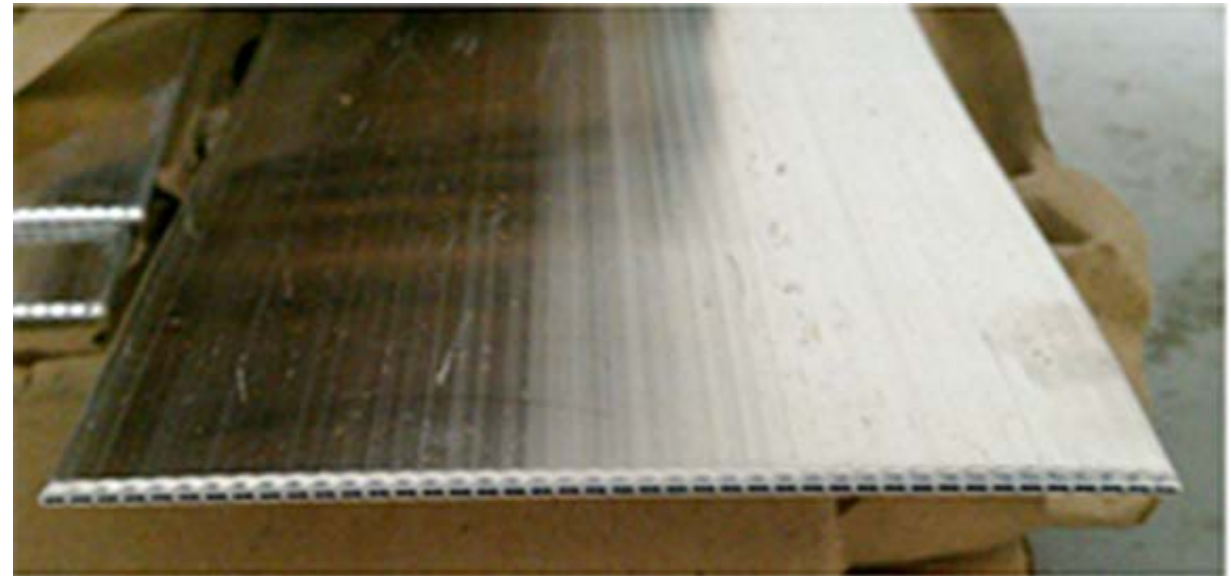
Improve Building Envelopes (EPC-16-067)

- Develop **thermal building insulation material with high R-value** at a cost commensurate with conventional insulation materials
- Includes **packed nanoparticle bed** to reduce the cost of manufacturing and lead to high mechanical strength.
- The goal is to develop insulation with a **R/inch value of at least 9**



Increase Renewable Energy Use (500-15-006)

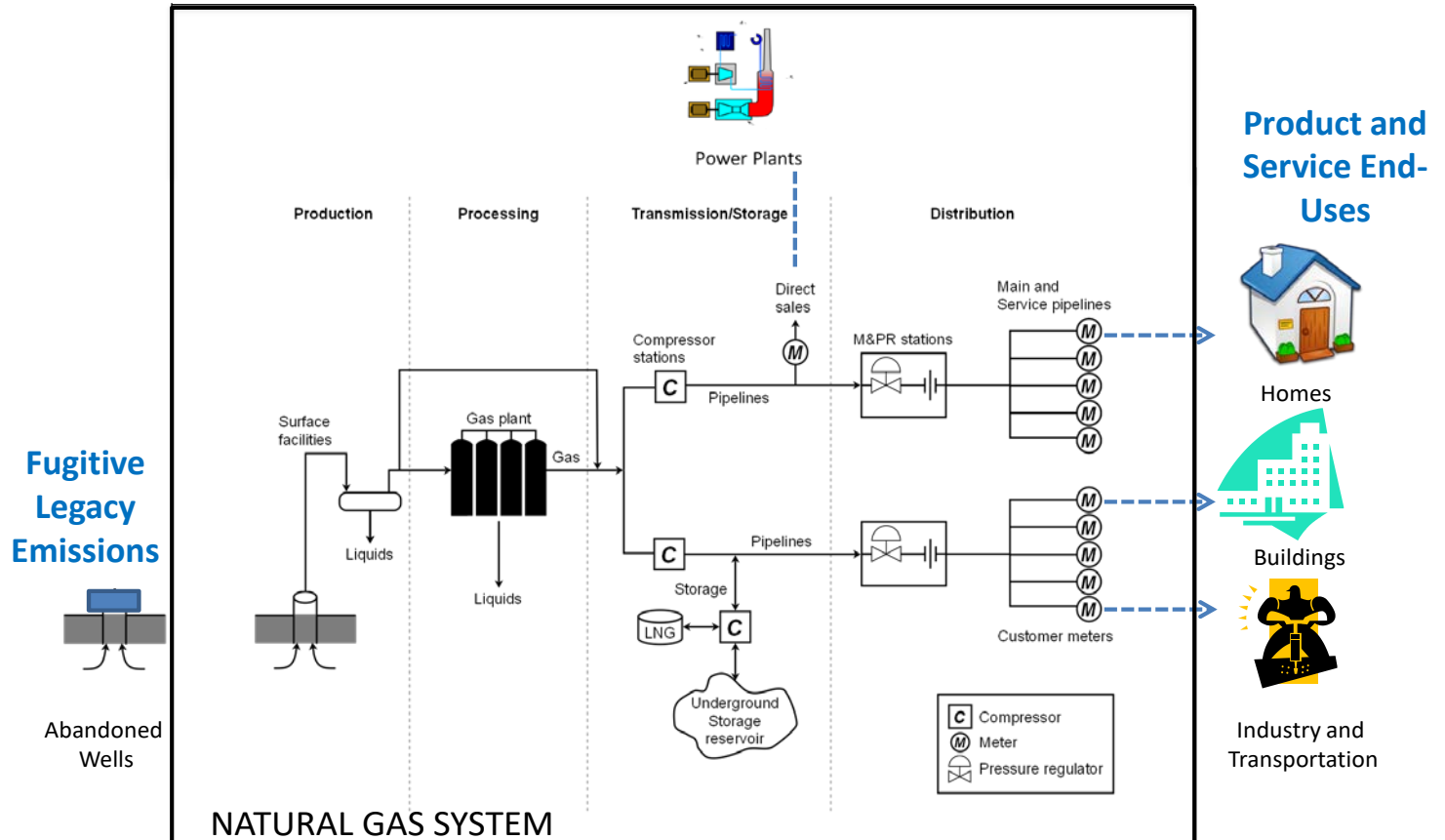
- Demonstrate **aluminum mini-channel solar water heating collectors** on residential buildings in the Los Angeles Basin
- Potential to **reduce the upfront cost of solar water heating by 30%**





Research on Methane Leaks from California's Natural Gas System

- Traditionally, analyses of natural gas sector emissions only considered sources inside the black rectangle.
- CEC's research program has expanded this limited view to include other potential sources of emissions.
- Official GHG inventories do not include most of these "downstream of the meter" emissions.



Adapted from:

Franco, Ziaja, Hou, Bining. Methane Emissions Associated with Natural Gas Consumption in California. Unpublished draft CEC staff paper. 2015.



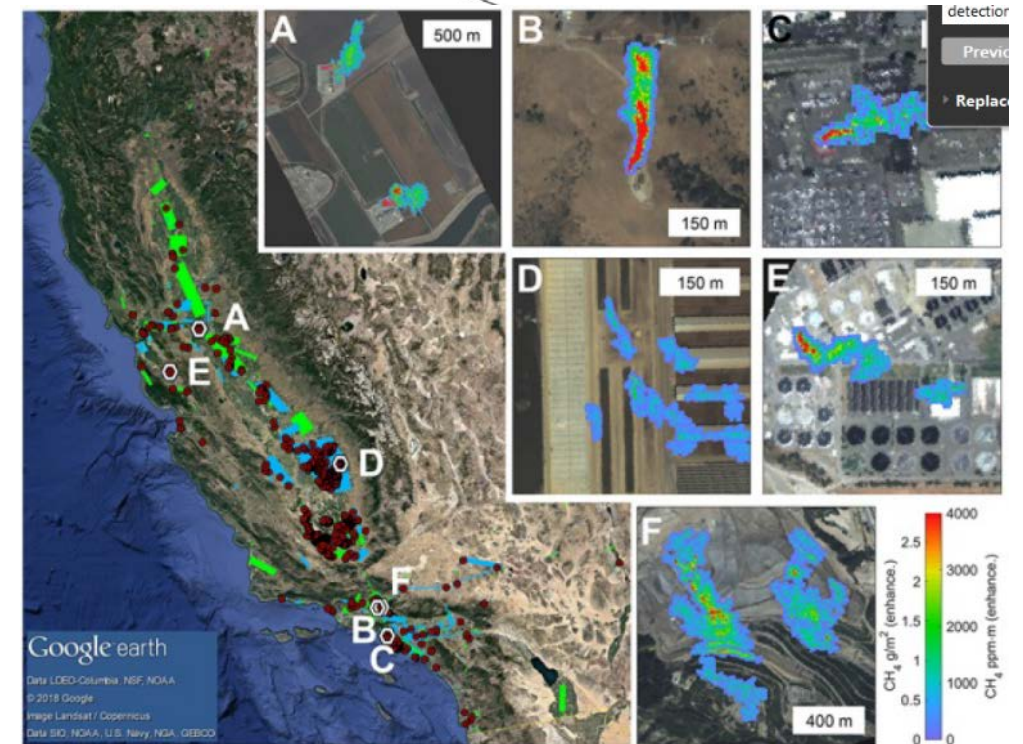
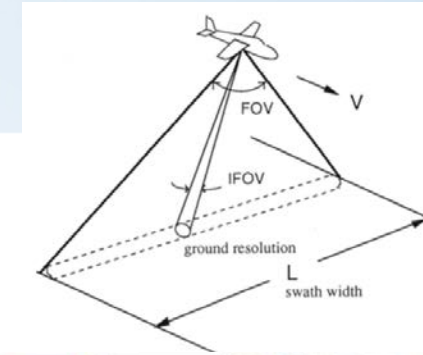
California Statewide Methane Survey for Point Sources

Led by JPL and recently published in *Nature*, a large field study funded by ARB, NASA/JPL, and CEC characterized point sources from multiple sectors based on airborne survey.¹

Highlights:

- **Point sources** (>~ 10 kg/hr of methane) **emit** an equivalent to **34-46% of the state's 2016 methane inventory**.
- **Methane emissions from associated wells** in the southern part of the SJ Valley are equivalent to **about 4% of natural gas production**.
- Results in all sectors investigated, including landfills and dairy farms, generally show **discrepancies from results based on standard estimation methods**.

1. Duren, R.M., Thorpe, A.K., Foster, K.T. et al. California's methane super-emitters. *Nature* 575, 180–184 (2019) doi:10.1038/s41586-019-1720-3.
Available online at: <https://www.nature.com/articles/s41586-019-1720-3>



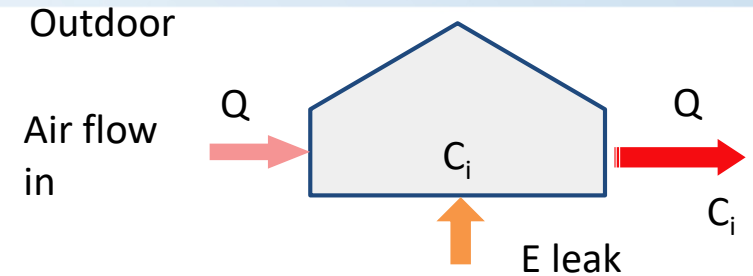
Source: JPL. Provided in support of CEC grant 500-15-004



Residential Behind-the-Meter Emissions

- A CEC-sponsored field study conducted measurements of residential behind-the-meter emissions in ~75 homes using blower door test.¹
- Results suggest that **leaked natural gas is ~0.5% of total residential consumption**, valued at approximately \$30,000,000 per year.
- CARB used results as basis **for inclusion of residential post-meter natural gas leaks in the most recent GHG inventory** (published 2019).²
- The PIER natural gas R&D funding request for FY 2019-2020³ includes support for further characterization of methane emissions from the residential sector.

1. Fischer, M. L., W. Chan, S. Jeong, and Z. Zhu (LBNL). 2018. *Natural Gas Methane Emissions From California Homes*. California Energy Commission. Publication Number: CEC-500-2018-021. <https://ww2.energy.ca.gov/publications/displayOneReport cms.php?pubNum=CEC-500-2018-021>
2. See https://ww3.arb.ca.gov/cc/inventory/pubs/reports/2000_2017/ghg_inventory_00-17_method_update_document.pdf
3. See <https://ww2.energy.ca.gov/2019publications/CEC-500-2019-035/CEC-500-2019-035.pdf>



Source: LBNL. Provided in support of CEC grant 500-13-006.



Additional, Ongoing Research on Methane Emissions Beyond the Residential Sector

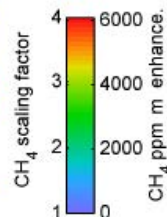
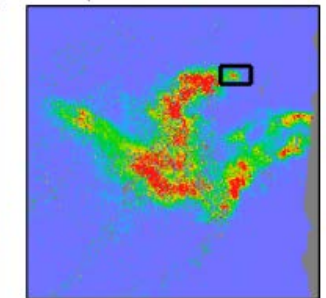
- **Field measurements in non-residential buildings**, including hospitals and restaurants. (PIR-15-003, PIR-15-017)
- **Field measurements in industrial sector**, including: natural gas power plants, CNG fueling stations, etc. (PIR-16-014)
- Development of **blueprint design for cost-effective continuous measurement of methane leaks across the entire NG system**, including residential, commercial, and industrial sectors, as well as production fields. (PIR-17-015)



(a) 20 April 2015, 16:07:19 UTC



(b) CH₄: 20 April 2015, 16:07:19 UTC



(c) 20 April 2015, 16:07:19 UTC



(d) Google Earth: 16 March 2015



