

**DOCKETED**

<b>Docket Stamp Updated:</b>	8/30/2019 3:39:13 PM
<b>Docket Number:</b>	19-SPPE-01
<b>Project Title:</b>	Laurelwood Data Center (MECP I Santa Clara I, LLC)
<b>TN #:</b>	229623
<b>Document Title:</b>	Illegible Figures in TN 229584 - Laurelwood Data Center Initial Study and Proposed Mitigated Negative Declaration
<b>Description:</b>	** This document supplements TN 229584, it does not supersede TN 229584. Please disregard the description field on page 2. **
<b>Filer:</b>	Marichka Haws
<b>Organization:</b>	California Energy Commission
<b>Submitter Role:</b>	Commission Staff
<b>Submission Date:</b>	8/30/2019 12:13:36 PM
<b>Docketed Date:</b>	8/30/2019

<b>DOCKETED</b>	
<b>Docket Number:</b>	19-SPPE-01
<b>Project Title:</b>	Laurelwood Data Center (MECP I Santa Clara I, LLC)
<b>TN #:</b>	229623
<b>Document Title:</b>	Illegible Figures in TN 229584 - Initial Study Porposed Mitigation Negative Delcaration
<b>Description:</b>	**This document supersedes TN 229584**
<b>Filer:</b>	Marichka Haws
<b>Organization:</b>	California Energy Commission
<b>Submitter Role:</b>	Commission Staff
<b>Submission Date:</b>	8/30/2019 11:50:18 AM
<b>Docketed Date:</b>	8/30/2019

## Memorandum

**Date:** August 30, 2019  
**Telephone:** (916) 654-4545

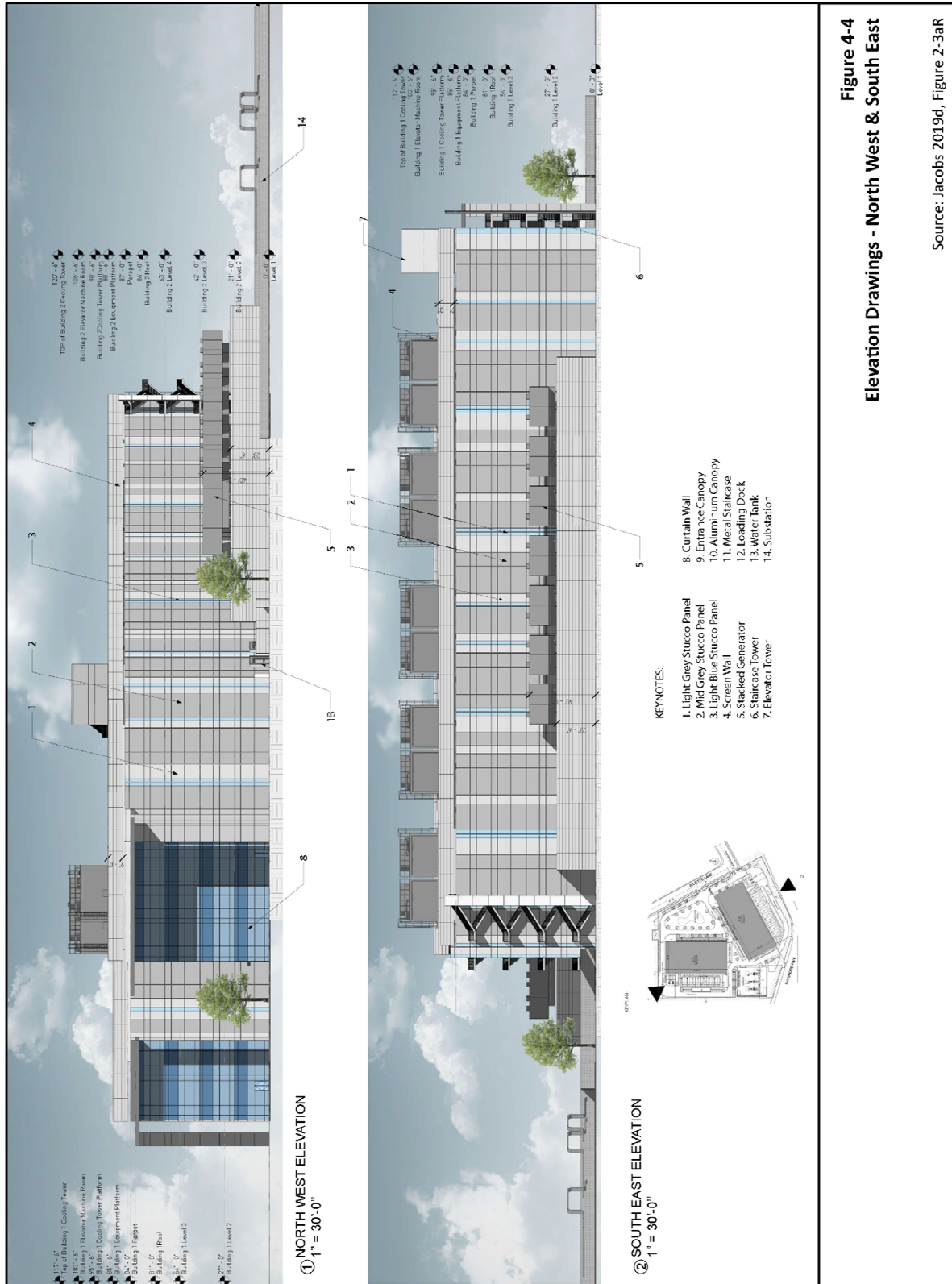
**To:** Docket Unit  
(For Laurelwood Data Center)

**From:** California Energy Commission – Lisa Worrall  
1516 Ninth Street CEQA Lead Project Manager  
Sacramento, CA 95814-5512

**Subject:** LAURELWOOD DATA CENTER (19-SPPE-01) ILLEGIBLE FIGURES IN TN 229584  
(INITIAL STUDY AND PROPOSED MITIGATED NEGATIVE DECLARATION)

On Wednesday, August 28, 2019, California Energy Commission staff submitted to the docket for Laurelwood Data Center (19-SPPE-01) under TN 229584, Laurelwood Data Center Initial Study and Proposed Mitigated Negative Declaration. Due to the electronic size limit with the docket, the submitted document was compressed, resulting in a four figures that were illegible.

Staff is submitting a clear copy of the figures that were illegible. These are the same figures that were included in the compressed electronic document, but in an uncompressed format. See attached figures.





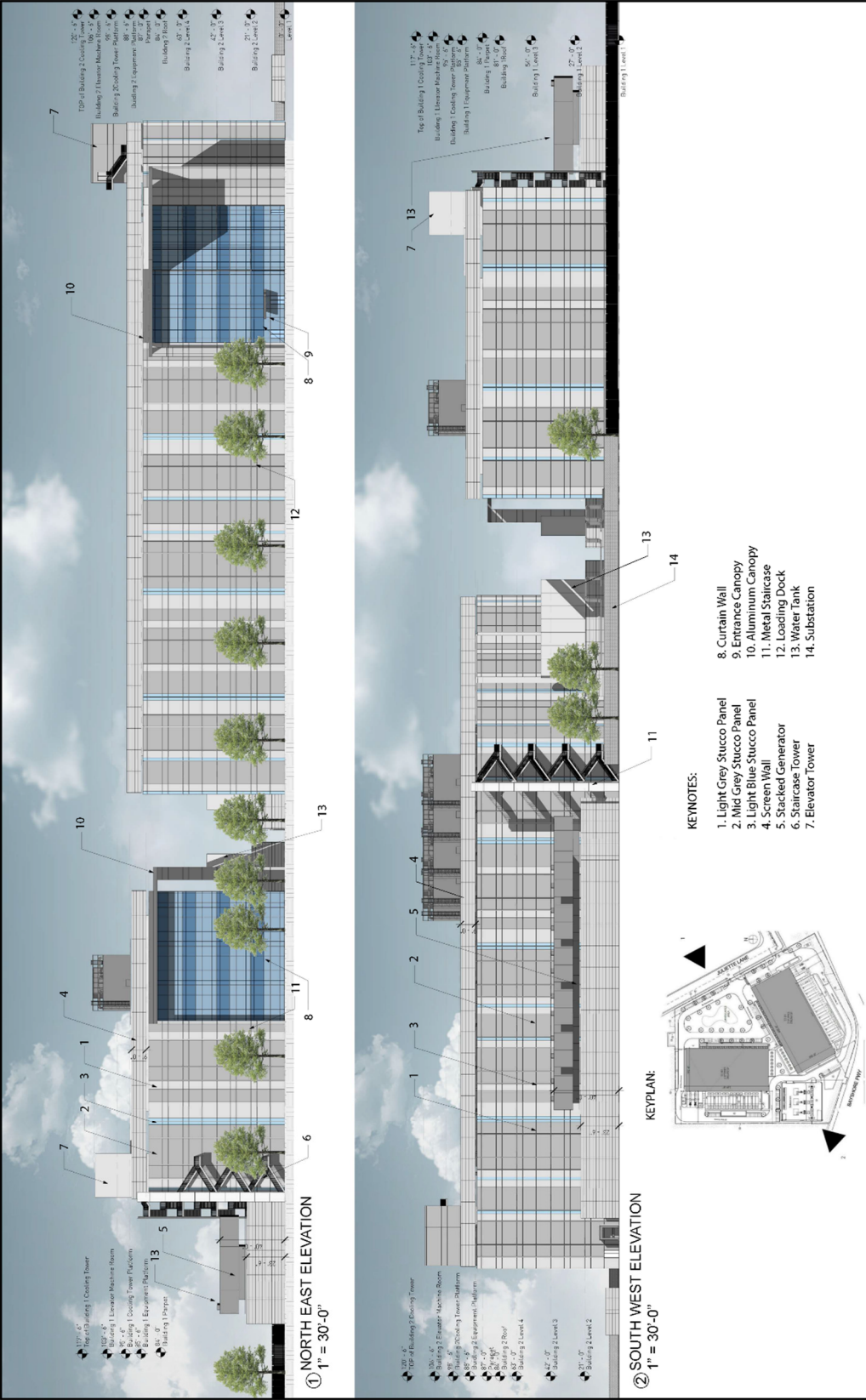


Figure 4-5  
Elevation Drawings - North East & South West

Source: Jacobs 2019d, Figure 2-3bR

