

DOCKETED

Docket Number:	19-SPPE-02
Project Title:	Walsh Data Center
TN #:	228949
Document Title:	Notice of Receipt
Description:	N/A
Filer:	Patty Paul
Organization:	California Energy Commission
Submitter Role:	Commission Staff
Submission Date:	7/12/2019 1:31:43 PM
Docketed Date:	7/12/2019

CALIFORNIA ENERGY COMMISSION

1516 NINTH STREET
SACRAMENTO, CA 95814-5512
www.energy.ca.gov



**NOTICE OF RECEIPT OF AN
APPLICATION FOR A SMALL POWER PLANT EXEMPTION
FOR WALSH DATA CENTER
(19-SPPE-02)**

On June 28, 2019, 651 Walsh Partners, LLC (applicant) filed an application with the California Energy Commission for a Small Power Plant Exemption (SPPE) for the Walsh Backup Generating Facility (WBGF), which would provide backup generation support to the Walsh Data Center (WDC) (19-SPPE-02). The WDC and associated WBGF would be located at 651 Walsh Avenue in Santa Clara, California.

PROJECT DESCRIPTION

The WDC would include demolition of the existing improvements on the site to construct a four-story data center building with an attached three-story administration building totaling 435,050 square feet, substation, generator equipment yard, surface parking and landscaping. The WBGF would consist of 32, 3-megawatt (MW) diesel fired generators with a total generation capacity of up to 80 MW¹ to provide an uninterruptible power supply for WDC tenant's servers. The generators would be located in one generator yard in a two-level stacked configuration. The lower level generator package would integrate a dedicated fuel tank with a capacity of 12,800 gallons. The upper level generators would have a day tank with a capacity of 600 gallons. The project would also include one 2-MW emergency generator that would provide backup electricity for the administrative building.

The new distribution substation would ultimately be owned and operated by Silicon Valley Power (SVP) as part of its distribution network. While SVP has not yet designed the 60-kilovolt (kV) transmission lines that would interconnect the new substation, SVP has estimated that one transmission line would come in to the site from the north and one from the south, both routes paralleling the existing Union Pacific Railroad rail lines. There may be up to six new transmission poles.

ENERGY COMMISSION'S SPPE PROCESS

The Energy Commission has the exclusive power to certify all thermal power plant (50 MW and greater) sites and related facilities proposed for construction in California. The SPPE process allows applicants with projects between 50 and 100 MW to obtain an exemption from the Energy Commission's jurisdiction and proceed with local approval rather than requiring Energy Commission certification. The Energy Commission can grant an exemption if it finds that the proposed project would not create a substantial adverse impact on the environment or energy resources. In this case, the WBGF is subject to the Energy Commission's licensing authority unless the exemption is granted. Should the exemption be granted, the applicant would still need to secure the appropriate licenses and permits from relevant local, state, and federal agencies.

ENERGY COMMISSION STAFF EVALUATION OF THE SPPE APPLICATION AND FURTHER STEPS

Public Resources Code section 25519(c) designates the Energy Commission as the lead agency, in accordance with the California Environmental Quality Act (CEQA), for all projects seeking an SPPE. CEQA requires the lead agency to consider the whole of the action; therefore, the Energy Commission will include the data center portion of the project in addition to the backup generation component in its analysis. Thus, any reference to the "Walsh Data Center," "WDC", or "project," means both the data center and backup generators and associated facilities.

¹ Maximum electrical demand of the WDC.

WALSH DATA CENTER (19-SPPE-02)
NOTICE OF RECEIPT

As lead agency, the Energy Commission is required by Public Resources Code section 21080.3 and CEQA Guidelines section 15063(g) to consult with responsible agencies regarding significant environmental effects that could result from the project. Energy Commission staff (staff) has begun its review of the application and will request the appointment of a Committee of two Commissioners at the Energy Commission's July 15, 2019 Business Meeting to oversee the SPPE proceeding. Over the coming months, staff will evaluate the project and prepare an environmental analysis document—for SPPE projects this typically takes the form of an Initial Study. Following publication of that document and consideration of public comments, the assigned Committee will conduct a hearing to determine whether the proposed project should be exempt from the Energy Commission's power plant certification process. This hearing will provide the public as well as local, state and federal agencies and California Native American tribes the opportunity to provide input on the exemption request. Subsequent steps include issuance of a proposed decision by the Committee, and possible adoption of that decision by the Energy Commission at a Business Meeting or hearing. The Energy Commission's regulations setting forth the SPPE process are primarily located in Title 20, California Code of Regulations sections 1934-1947.

PUBLIC PARTICIPATION

The Energy Commission maintains a website for this project at: <https://ww2.energy.ca.gov/sitingcases/walsh/>. The SPPE application and related project documents are viewable by clicking the "Documents for this Proceeding (Docket Log)" link located near the upper right corner of the project webpage. The direct link to the project docket is: <https://efiling.energy.ca.gov/Lists/DocketLog.aspx?docketnumber=19-SPPE-02>.

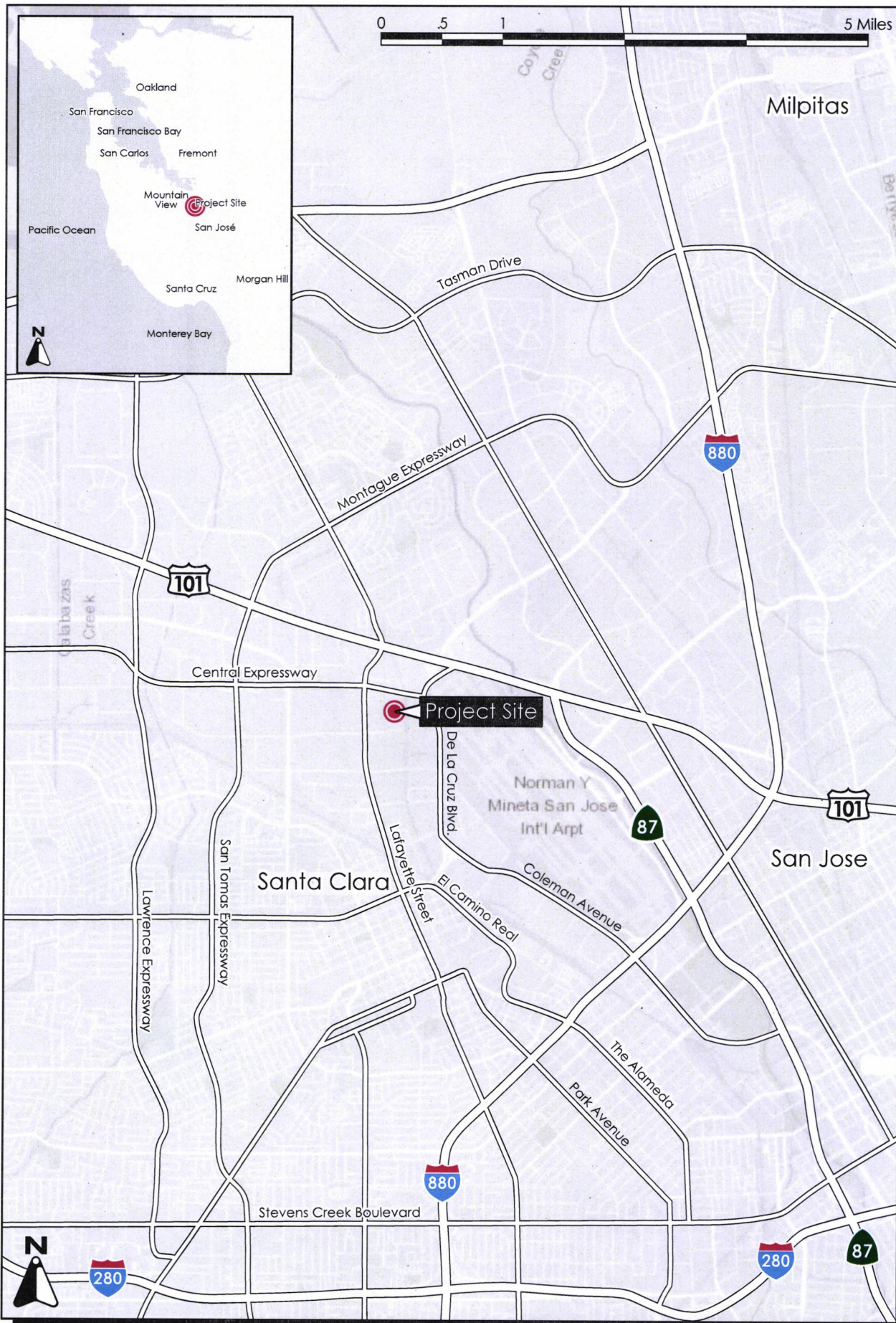
You can subscribe to receive e-mail notification of all notices and announcements at: https://ww2.energy.ca.gov/listservers/index_cms.html. The listserve for this project is called "walsh" and the relevant check-box can be found under the "PROJECTS UNDER REVIEW" heading. By being on this email list, you will receive notice of all project-related events and documents pertaining to the project's review. Most notably, the Energy Commission will issue a public notice for the hearing at least 10 days prior to its occurrence.

The Energy Commission's Public Adviser's Office is available to provide information on, and assistance with, public participation in Energy Commission proceedings. The Public Adviser's Office can be reached at (916) 654-4489 or toll free in California, at (800) 822-6228, and can also be contacted via email at publicadviser@energy.ca.gov.

Please direct any technical questions related to the project to Leonidas Payne, Project Manager, at (916) 651-0966, or by e-mail at Leonidas.Payne@energy.ca.gov.

Attachments:

Project Location Figure from SPPE Application
Site Plan Figure from SPPE Application
Elevation Drawing from SPPE Application

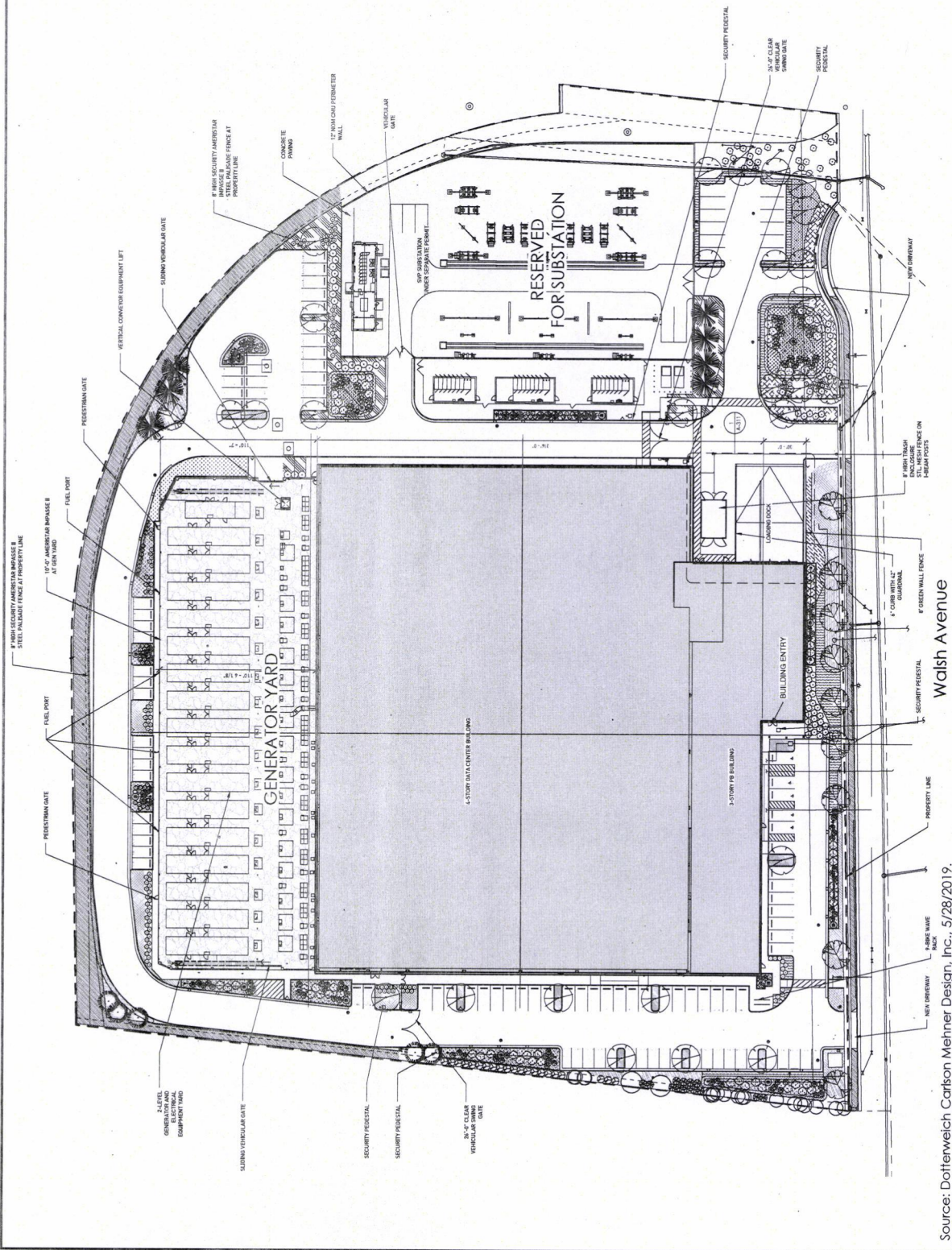


REGIONAL MAP

FIGURE 1-1

LOT DATA

LOT AREA	344,124 SF
BUILDING FOOTPRINT	
LOT COVERAGE	32.4%
BUILDING SF	435,050 SF
FAR	1.26



Walsh Avenue

Source: Dotterweich Carlson Mehner Design, Inc., 5/28/2019.

SITE PLAN

FIGURE 2-1

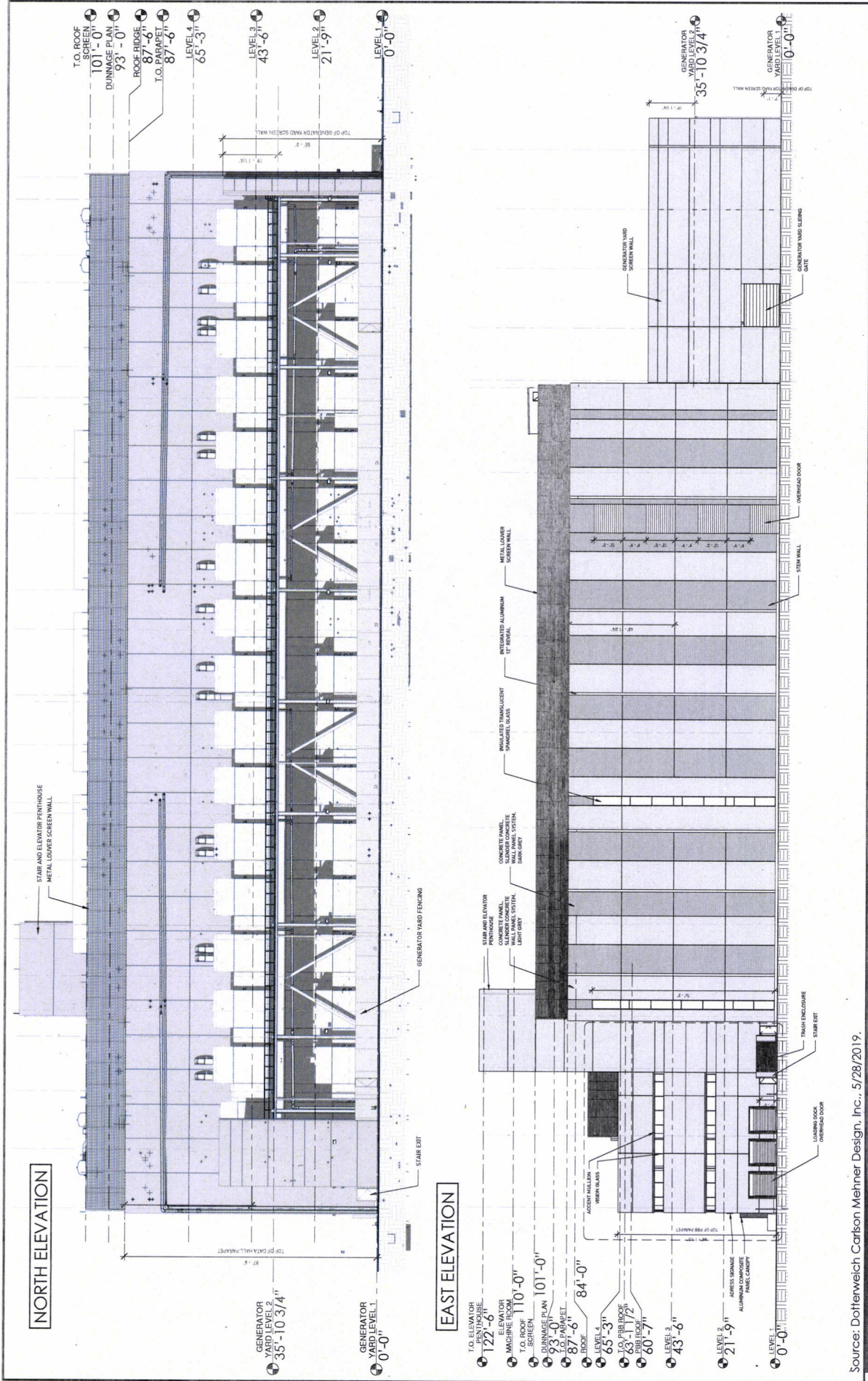


FIGURE 2-3

NORTH AND EAST BUILDING ELEVATIONS

Source: Doffterweich Carbon Mehner Design, Inc., 5/28/2019.