

**DOCKETED**

<b>Docket Number:</b>	19-SPPE-01
<b>Project Title:</b>	Laurelwood Data Center (MECP I Santa Clara I, LLC)
<b>TN #:</b>	227446
<b>Document Title:</b>	Initial Tribal Consultation Letters
<b>Description:</b>	Commission staff's initial letters to California Native American tribes affiliated with the project area.
<b>Filer:</b>	Gabriel Roark
<b>Organization:</b>	California Energy Commission
<b>Submitter Role:</b>	Energy Commission
<b>Submission Date:</b>	3/28/2019 10:38:24 AM
<b>Docketed Date:</b>	3/28/2019

**CALIFORNIA ENERGY COMMISSION**

1516 NINTH STREET  
SACRAMENTO, CA 95814-5512  
www.energy.ca.gov



March 26, 2019

Honorable Valentin Lopez, Chairperson  
Amah Mutsun Tribal Band  
P.O. Box 5272  
Galt, CA 95632

RE: Laurelwood Data Center (19-SPPE-01) - Invitation to Participate in California Energy Commission Consultation

Dear Honorable Valentin Lopez, Chairperson:

The California Energy Commission is responsible for preparing an environmental analysis for the proposed Laurelwood Data Center (LDC) and invites the Amah Mutsun Tribal Band to consult regarding this project because of the Amah Mutsun Tribal Band's traditional and cultural affiliation, and knowledge within the geographic area of the proposed project.

This letter provides general information concerning the current project design, includes attached maps depicting the regional and project location, and invites you to participate in Energy Commission consultations, pursuant to the Energy Commission's Tribal Consultation Policy.

The Energy Commission received an application for a small power plant exemption (SPPE) from EdgeCore (applicant) on February 28, 2019, for a project that would deploy 56 diesel-fueled generators with a total backup generation capacity of up to 99 megawatts (MW) to enable the LDC to provide an uninterruptible power supply for its tenant's servers. EdgeCore proposes to build the LDC at 2201 Laurelwood Road in Santa Clara, California.

The Energy Commission is responsible for reviewing, and ultimately approving or denying, all thermal electric power plants, 50 MW and greater, proposed for construction in California. The SPPE process allows applicants, with projects between 50 and 100 MW, to obtain an exemption from the Energy Commission's jurisdiction and proceed with local approval rather than requiring an Energy Commission license. The Energy Commission can grant an exemption if it finds the proposed project would not create a substantial adverse impact on the environment or energy resources. In reviewing an SPPE application, the Energy Commission acts as the lead agency under section 25519(c) of the Public Resources Code and the California Environmental Quality Act (CEQA), and will perform any required environmental analysis.

## **PROJECT DESCRIPTION**

The LDC project site is 12 acres at 2201 Laurelwood Road in Santa Clara, Santa Clara County, California. The project site currently comprises a single parcel used for an industrial warehouse, manufacturing, and office purposes, in addition to surface parking. The former owner will demolish the existing buildings and structures as a condition of sale to EdgeCore. The applicant would construct the LDC, which would consist of 56 diesel-fired backup generators arranged in two generation yards. Each generation yard would serve one of two four-story server buildings. These generators would be distributed in redundant configurations (5 to make 4) to ensure uninterrupted power up to 99 MW, which is the maximum building load of the LDC. Each generator would include an approximately 10,300-gallon diesel fuel tank, located underneath each generator. The fuel tank would provide sufficient fuel storage to operate the generator at steady state continuous load for at least 48 hours. Each building's standby generators would receive support from an uninterruptible power supply system consisting of batteries, an inverter, and switches, to facilitate the uninterrupted transfer of electrical power supply from the Silicon Valley Power (SVP) substation to the onsite standby generators in the event of a utility or equipment failure. An approximately 29,000-square-foot substation would be located in the southwest corner of the project site, and an approximately 600-foot-long electrical supply line would head west from the LDC to tie into SVP's existing 60-kV distribution line on the west side of San Tomas Aquino Creek. Additional project features include electrical switchgear and distribution lines between the substation and buildings as well as from the backup generator yards and each respective building. CEQA requires the lead agency to consider the whole of the action. Therefore, the Energy Commission will include the entire data center project in its analysis, which includes the construction of two new four-story data center buildings along with the installation and operation of the generators.

The project site borders Juliette Lane and other industrial and commercial properties to the east, US-101 to the south, a parking lot to the west, and additional industrial and commercial properties to the north.

Energy Commission staff would like to consult with you to better understand Native American concerns regarding this project. Please respond to this letter in writing within 30 days if the Amah Mutsun Tribal Band would like to consult.

If you would like to be notified by e-mail whenever a document is posted to the project website, you may sign up for the project listserv on the Energy Commission's main web page listed below.

To review the LDC SPPE application (19-SPPE-01), and find more information about the project and proceedings, please visit the project website:

<http://www.energy.ca.gov/sitingcases/laurelwood/>

Honorable Valentin Lopez, Chairperson  
March 26, 2019  
Page 3

The Energy Commission staff welcomes your comments or questions. If you have comments or questions, please contact Jessica Bonitz at (916) 653-2543 or [Jessica.Bonitz@energy.ca.gov](mailto:Jessica.Bonitz@energy.ca.gov).

Sincerely,



Thomas Gates, Ph.D.

Tribal Liaison  
Supervisor  
Cultural Resources Unit  
Siting, Transmission, & Environmental  
Protection

Enclosures: Regional Location Map  
Project Location Map

**CALIFORNIA ENERGY COMMISSION**

1516 NINTH STREET  
SACRAMENTO, CA 95814-5512  
www.energy.ca.gov



March 26, 2019

Honorable Irene Zwierlein, Chairperson  
Amah Mutsun Tribal Band of Mission San Juan Bautista  
789 Canada Road  
Woodside, CA 94062

RE: Laurelwood Data Center (19-SPPE-01) - Invitation to Participate in California Energy Commission Consultation

Dear Honorable Irene Zwierlein, Chairperson:

The California Energy Commission is responsible for preparing an environmental analysis for the proposed Laurelwood Data Center (LDC) and invites the Amah Mutsun Tribal Band of Mission San Juan Bautista to consult regarding this project because of the Amah Mutsun Tribal Band of Mission San Juan Bautista's traditional and cultural affiliation, and knowledge within the geographic area of the proposed project.

This letter provides general information concerning the current project design, includes attached maps depicting the regional and project location, and invites you to participate in Energy Commission consultations, pursuant to the Energy Commission's Tribal Consultation Policy.

The Energy Commission received an application for a small power plant exemption (SPPE) from EdgeCore (applicant) on February 28, 2019, for a project that would deploy 56 diesel-fueled generators with a total backup generation capacity of up to 99 megawatts (MW) to enable the LDC to provide an uninterruptible power supply for its tenant's servers. EdgeCore proposes to build the LDC at 2201 Laurelwood Road in Santa Clara, California.

The Energy Commission is responsible for reviewing, and ultimately approving or denying, all thermal electric power plants, 50 MW and greater, proposed for construction in California. The SPPE process allows applicants, with projects between 50 and 100 MW, to obtain an exemption from the Energy Commission's jurisdiction and proceed with local approval rather than requiring an Energy Commission license. The Energy Commission can grant an exemption if it finds the proposed project would not create a substantial adverse impact on the environment or energy resources. In reviewing an SPPE application, the Energy Commission acts as the lead agency under section 25519(c) of the Public Resources Code and the California Environmental Quality Act (CEQA), and will perform any required environmental analysis.

## **PROJECT DESCRIPTION**

The LDC project site is 12 acres at 2201 Laurelwood Road in Santa Clara, Santa Clara County, California. The project site currently comprises a single parcel used for an industrial warehouse, manufacturing, and office purposes, in addition to surface parking. The former owner will demolish the existing buildings and structures as a condition of sale to EdgeCore. The applicant would construct the LDC, which would consist of 56 diesel-fired backup generators arranged in two generation yards. Each generation yard would serve one of two four-story server buildings. These generators would be distributed in redundant configurations (5 to make 4) to ensure uninterrupted power up to 99 MW, which is the maximum building load of the LDC. Each generator would include an approximately 10,300-gallon diesel fuel tank, located underneath each generator. The fuel tank would provide sufficient fuel storage to operate the generator at steady state continuous load for at least 48 hours. Each building's standby generators would receive support from an uninterruptible power supply system consisting of batteries, an inverter, and switches, to facilitate the uninterrupted transfer of electrical power supply from the Silicon Valley Power (SVP) substation to the onsite standby generators in the event of a utility or equipment failure. An approximately 29,000-square-foot substation would be located in the southwest corner of the project site, and an approximately 600-foot-long electrical supply line would head west from the LDC to tie into SVP's existing 60-kV distribution line on the west side of San Tomas Aquino Creek. Additional project features include electrical switchgear and distribution lines between the substation and buildings as well as from the backup generator yards and each respective building. CEQA requires the lead agency to consider the whole of the action. Therefore, the Energy Commission will include the entire data center project in its analysis, which includes the construction of two new four-story data center buildings along with the installation and operation of the generators.

The project site borders Juliette Lane and other industrial and commercial properties to the east, US-101 to the south, a parking lot to the west, and additional industrial and commercial properties to the north.

Energy Commission staff would like to consult with you to better understand Native American concerns regarding this project. Please respond to this letter in writing within 30 days if the Amah Mutsun Tribal Band of Mission San Juan Bautista would like to consult.

If you would like to be notified by e-mail whenever a document is posted to the project website, you may sign up for the project listserv on the Energy Commission's main web page listed below.

To review the LDC SPPE application (19-SPPE-01), and find more information about the project and proceedings, please visit the project website:

<http://www.energy.ca.gov/sitingcases/laurelwood/>

Honorable Irene Zwierlein, Chairperson

March 26, 2019

Page 3

The Energy Commission staff welcomes your comments or questions. If you have comments or questions, please contact Jessica Bonitz at (916) 653-2543 or [Jessica.Bonitz@energy.ca.gov](mailto:Jessica.Bonitz@energy.ca.gov).

Sincerely,

A handwritten signature in blue ink that reads "Thomas Gates". The signature is written in a cursive, flowing style.

Thomas Gates, Ph.D.

Tribal Liaison  
Supervisor  
Cultural Resources Unit  
Siting, Transmission, & Environmental  
Protection

Enclosures: Regional Location Map  
Project Location Map

**CALIFORNIA ENERGY COMMISSION**

1516 NINTH STREET  
SACRAMENTO, CA 95814-5512  
www.energy.ca.gov



March 26, 2019

Honorable Ann-Marie Sayers, Chairperson  
Indian Canyon Mutsun Band of Costanoan  
P.O. Box 28  
Hollister, CA 95024

RE: Laurelwood Data Center (19-SPPE-01) - Invitation to Participate in California Energy Commission Consultation

Dear Honorable Ann-Marie Sayers, Chairperson:

The California Energy Commission is responsible for preparing an environmental analysis for the proposed Laurelwood Data Center (LDC) and invites the Indian Canyon Mutsun Band of Costanoan to consult regarding this project because of the Indian Canyon Mutsun Band of Costanoan's traditional and cultural affiliation, and knowledge within the geographic area of the proposed project.

This letter provides general information concerning the current project design, includes attached maps depicting the regional and project location, and invites you to participate in Energy Commission consultations, pursuant to the Energy Commission's Tribal Consultation Policy.

The Energy Commission received an application for a small power plant exemption (SPPE) from EdgeCore (applicant) on February 28, 2019, for a project that would deploy 56 diesel-fueled generators with a total backup generation capacity of up to 99 megawatts (MW) to enable the LDC to provide an uninterruptible power supply for its tenant's servers. EdgeCore proposes to build the LDC at 2201 Laurelwood Road in Santa Clara, California.

The Energy Commission is responsible for reviewing, and ultimately approving or denying, all thermal electric power plants, 50 MW and greater, proposed for construction in California. The SPPE process allows applicants, with projects between 50 and 100 MW, to obtain an exemption from the Energy Commission's jurisdiction and proceed with local approval rather than requiring an Energy Commission license. The Energy Commission can grant an exemption if it finds the proposed project would not create a substantial adverse impact on the environment or energy resources. In reviewing an SPPE application, the Energy Commission acts as the lead agency under section 25519(c) of the Public Resources Code and the California Environmental Quality Act (CEQA), and will perform any required environmental analysis.



## **PROJECT DESCRIPTION**

The LDC project site is 12 acres at 2201 Laurelwood Road in Santa Clara, Santa Clara County, California. The project site currently comprises a single parcel used for an industrial warehouse, manufacturing, and office purposes, in addition to surface parking. The former owner will demolish the existing buildings and structures as a condition of sale to EdgeCore. The applicant would construct the LDC, which would consist of 56 diesel-fired backup generators arranged in two generation yards. Each generation yard would serve one of two four-story server buildings. These generators would be distributed in redundant configurations (5 to make 4) to ensure uninterrupted power up to 99 MW, which is the maximum building load of the LDC. Each generator would include an approximately 10,300-gallon diesel fuel tank, located underneath each generator. The fuel tank would provide sufficient fuel storage to operate the generator at steady state continuous load for at least 48 hours. Each building's standby generators would receive support from an uninterruptible power supply system consisting of batteries, an inverter, and switches, to facilitate the uninterrupted transfer of electrical power supply from the Silicon Valley Power (SVP) substation to the onsite standby generators in the event of a utility or equipment failure. An approximately 29,000-square-foot substation would be located in the southwest corner of the project site, and an approximately 600-foot-long electrical supply line would head west from the LDC to tie into SVP's existing 60-kV distribution line on the west side of San Tomas Aquino Creek. Additional project features include electrical switchgear and distribution lines between the substation and buildings as well as from the backup generator yards and each respective building. CEQA requires the lead agency to consider the whole of the action. Therefore, the Energy Commission will include the entire data center project in its analysis, which includes the construction of two new four-story data center buildings along with the installation and operation of the generators.

The project site borders Juliette Lane and other industrial and commercial properties to the east, US-101 to the south, a parking lot to the west, and additional industrial and commercial properties to the north.

Energy Commission staff would like to consult with you to better understand Native American concerns regarding this project. Please respond to this letter in writing within 30 days if the Indian Canyon Mutsun Band of Costanoan would like to consult.

If you would like to be notified by e-mail whenever a document is posted to the project website, you may sign up for the project listserv on the Energy Commission's main web page listed below.

To review the LDC SPPE application (19-SPPE-01), and find more information about the project and proceedings, please visit the project website:

<http://www.energy.ca.gov/sitingcases/laurelwood/>

Honorable Ann-Marie Sayers, Chairperson  
March 26, 2019  
Page 3

The Energy Commission staff welcomes your comments or questions. If you have comments or questions, please contact Jessica Bonitz at (916) 653-2543 or [Jessica.Bonitz@energy.ca.gov](mailto:Jessica.Bonitz@energy.ca.gov).

Sincerely,

A handwritten signature in blue ink that reads "Thomas Gates". The signature is written in a cursive style with a long horizontal flourish at the end.

Thomas Gates, Ph.D.

Tribal Liaison  
Supervisor  
Cultural Resources Unit  
Siting, Transmission, & Environmental  
Protection

Enclosures: Regional Location Map  
Project Location Map

**CALIFORNIA ENERGY COMMISSION**

1516 NINTH STREET  
SACRAMENTO, CA 95814-5512  
www.energy.ca.gov



March 26, 2019

Honorable Charlene Nijmeh, Chairperson  
Muwekma Ohlone Tribe of the San Francisco Bay Area  
20885 Redwood Road, Suite 232  
Castro Valley, CA 94546

RE: Laurelwood Data Center (19-SPPE-01) - Invitation to Participate in California Energy Commission Consultation

Dear Honorable Charlene Nijmeh, Chairperson:

The California Energy Commission is responsible for preparing an environmental analysis for the proposed Laurelwood Data Center (LDC) and invites the Muwekma Ohlone Tribe of the San Francisco Bay Area to consult regarding this project because of the Muwekma Ohlone Tribe of the San Francisco Bay Area's traditional and cultural affiliation, and knowledge within the geographic area of the proposed project.

This letter provides general information concerning the current project design, includes attached maps depicting the regional and project location, and invites you to participate in Energy Commission consultations, pursuant to the Energy Commission's Tribal Consultation Policy.

The Energy Commission received an application for a small power plant exemption (SPPE) from EdgeCore (applicant) on February 28, 2019, for a project that would deploy 56 diesel-fueled generators with a total backup generation capacity of up to 99 megawatts (MW) to enable the LDC to provide an uninterruptible power supply for its tenant's servers. EdgeCore proposes to build the LDC at 2201 Laurelwood Road in Santa Clara, California.

The Energy Commission is responsible for reviewing, and ultimately approving or denying, all thermal electric power plants, 50 MW and greater, proposed for construction in California. The SPPE process allows applicants, with projects between 50 and 100 MW, to obtain an exemption from the Energy Commission's jurisdiction and proceed with local approval rather than requiring an Energy Commission license. The Energy Commission can grant an exemption if it finds the proposed project would not create a substantial adverse impact on the environment or energy resources. In reviewing an SPPE application, the Energy Commission acts as the lead agency under section 25519(c) of the Public Resources Code and the California Environmental Quality Act (CEQA), and will perform any required environmental analysis.

## **PROJECT DESCRIPTION**

The LDC project site is 12 acres at 2201 Laurelwood Road in Santa Clara, Santa Clara County, California. The project site currently comprises a single parcel used for an industrial warehouse, manufacturing, and office purposes, in addition to surface parking. The former owner will demolish the existing buildings and structures as a condition of sale to EdgeCore. The applicant would construct the LDC, which would consist of 56 diesel-fired backup generators arranged in two generation yards. Each generation yard would serve one of two four-story server buildings. These generators would be distributed in redundant configurations (5 to make 4) to ensure uninterrupted power up to 99 MW, which is the maximum building load of the LDC. Each generator would include an approximately 10,300-gallon diesel fuel tank, located underneath each generator. The fuel tank would provide sufficient fuel storage to operate the generator at steady state continuous load for at least 48 hours. Each building's standby generators would receive support from an uninterruptible power supply system consisting of batteries, an inverter, and switches, to facilitate the uninterrupted transfer of electrical power supply from the Silicon Valley Power (SVP) substation to the onsite standby generators in the event of a utility or equipment failure. An approximately 29,000-square-foot substation would be located in the southwest corner of the project site, and an approximately 600-foot-long electrical supply line would head west from the LDC to tie into SVP's existing 60-kV distribution line on the west side of San Tomas Aquino Creek. Additional project features include electrical switchgear and distribution lines between the substation and buildings as well as from the backup generator yards and each respective building. CEQA requires the lead agency to consider the whole of the action. Therefore, the Energy Commission will include the entire data center project in its analysis, which includes the construction of two new four-story data center buildings along with the installation and operation of the generators.

The project site borders Juliette Lane and other industrial and commercial properties to the east, US-101 to the south, a parking lot to the west, and additional industrial and commercial properties to the north.

Energy Commission staff would like to consult with you to better understand Native American concerns regarding this project. Please respond to this letter in writing within 30 days if the Muwekma Ohlone Tribe of the San Francisco Bay Area would like to consult.

If you would like to be notified by e-mail whenever a document is posted to the project website, you may sign up for the project listserv on the Energy Commission's main web page listed below.

To review the LDC SPPE application (19-SPPE-01), and find more information about the project and proceedings, please visit the project website:

<http://www.energy.ca.gov/sitingcases/laurelwood/>

Honorable Charlene Nijmeh, Chairperson

March 26, 2019

Page 3

The Energy Commission staff welcomes your comments or questions. If you have comments or questions, please contact Jessica Bonitz at (916) 653-2543 or [Jessica.Bonitz@energy.ca.gov](mailto:Jessica.Bonitz@energy.ca.gov).

Sincerely,

A handwritten signature in blue ink that reads "Thomas Gates". The signature is written in a cursive style with a long horizontal flourish extending to the right.

Thomas Gates, Ph.D.

Tribal Liaison  
Supervisor  
Cultural Resources Unit  
Siting, Transmission, & Environmental  
Protection

Enclosures: Regional Location Map  
Project Location Map

**CALIFORNIA ENERGY COMMISSION**

1516 NINTH STREET  
SACRAMENTO, CA 95814-5512  
www.energy.ca.gov



March 26, 2019

Honorable Katherine Erolinda Perez, Chairperson  
North Valley Yokuts Tribe  
P.O. Box 717  
Linden, CA 95236

RE: Laurelwood Data Center (19-SPPE-01) - Invitation to Participate in California Energy Commission Consultation

Dear Honorable Katherine Erolinda Perez, Chairperson:

The California Energy Commission is responsible for preparing an environmental analysis for the proposed Laurelwood Data Center (LDC) and invites the North Valley Yokuts Tribe to consult regarding this project because of the North Valley Yokuts Tribe's traditional and cultural affiliation, and knowledge within the geographic area of the proposed project.

This letter provides general information concerning the current project design, includes attached maps depicting the regional and project location, and invites you to participate in Energy Commission consultations, pursuant to the Energy Commission's Tribal Consultation Policy.

The Energy Commission received an application for a small power plant exemption (SPPE) from EdgeCore (applicant) on February 28, 2019, for a project that would deploy 56 diesel-fueled generators with a total backup generation capacity of up to 99 megawatts (MW) to enable the LDC to provide an uninterruptible power supply for its tenant's servers. EdgeCore proposes to build the LDC at 2201 Laurelwood Road in Santa Clara, California.

The Energy Commission is responsible for reviewing, and ultimately approving or denying, all thermal electric power plants, 50 MW and greater, proposed for construction in California. The SPPE process allows applicants, with projects between 50 and 100 MW, to obtain an exemption from the Energy Commission's jurisdiction and proceed with local approval rather than requiring an Energy Commission license. The Energy Commission can grant an exemption if it finds the proposed project would not create a substantial adverse impact on the environment or energy resources. In reviewing an SPPE application, the Energy Commission acts as the lead agency under section 25519(c) of the Public Resources Code and the California Environmental Quality Act (CEQA), and will perform any required environmental analysis.

## **PROJECT DESCRIPTION**

The LDC project site is 12 acres at 2201 Laurelwood Road in Santa Clara, Santa Clara County, California. The project site currently comprises a single parcel used for an industrial warehouse, manufacturing, and office purposes, in addition to surface parking. The former owner will demolish the existing buildings and structures as a condition of sale to EdgeCore. The applicant would construct the LDC, which would consist of 56 diesel-fired backup generators arranged in two generation yards. Each generation yard would serve one of two four-story server buildings. These generators would be distributed in redundant configurations (5 to make 4) to ensure uninterrupted power up to 99 MW, which is the maximum building load of the LDC. Each generator would include an approximately 10,300-gallon diesel fuel tank, located underneath each generator. The fuel tank would provide sufficient fuel storage to operate the generator at steady state continuous load for at least 48 hours. Each building's standby generators would receive support from an uninterruptible power supply system consisting of batteries, an inverter, and switches, to facilitate the uninterrupted transfer of electrical power supply from the Silicon Valley Power (SVP) substation to the onsite standby generators in the event of a utility or equipment failure. An approximately 29,000-square-foot substation would be located in the southwest corner of the project site, and an approximately 600-foot-long electrical supply line would head west from the LDC to tie into SVP's existing 60-kV distribution line on the west side of San Tomas Aquino Creek. Additional project features include electrical switchgear and distribution lines between the substation and buildings as well as from the backup generator yards and each respective building. CEQA requires the lead agency to consider the whole of the action. Therefore, the Energy Commission will include the entire data center project in its analysis, which includes the construction of two new four-story data center buildings along with the installation and operation of the generators.

The project site borders Juliette Lane and other industrial and commercial properties to the east, US-101 to the south, a parking lot to the west, and additional industrial and commercial properties to the north.

Energy Commission staff would like to consult with you to better understand Native American concerns regarding this project. Please respond to this letter in writing within 30 days if the North Valley Yokuts Tribe would like to consult.

If you would like to be notified by e-mail whenever a document is posted to the project website, you may sign up for the project listserv on the Energy Commission's main web page listed below.

To review the LDC SPPE application (19-SPPE-01), and find more information about the project and proceedings, please visit the project website:

<http://www.energy.ca.gov/sitingcases/laurelwood/>

Honorable Katherine Erolinda Perez, Chairperson

March 26, 2019

Page 3

The Energy Commission staff welcomes your comments or questions. If you have comments or questions, please contact Jessica Bonitz at (916) 653-2543 or

[Jessica.Bonitz@energy.ca.gov](mailto:Jessica.Bonitz@energy.ca.gov).

Sincerely,



Thomas Gates, Ph.D.

Tribal Liaison  
Supervisor  
Cultural Resources Unit  
Siting, Transmission, & Environmental  
Protection

Enclosures: Regional Location Map  
Project Location Map



**CALIFORNIA ENERGY COMMISSION**

1516 NINTH STREET  
SACRAMENTO, CA 95814-5512  
www.energy.ca.gov



March 26, 2019

Andrew Galvan  
The Ohlone Indian Tribe  
P.O. Box 3388  
Fremont, CA 94539

RE: Laurelwood Data Center (19-SPPE-01) - Invitation to Participate in California Energy Commission Consultation

Dear Andrew Galvan:

The California Energy Commission is responsible for preparing an environmental analysis for the proposed Laurelwood Data Center (LDC) and invites the The Ohlone Indian Tribe to consult regarding this project because of the The Ohlone Indian Tribe's traditional and cultural affiliation, and knowledge within the geographic area of the proposed project.

This letter provides general information concerning the current project design, includes attached maps depicting the regional and project location, and invites you to participate in Energy Commission consultations, pursuant to the Energy Commission's Tribal Consultation Policy.

The Energy Commission received an application for a small power plant exemption (SPPE) from EdgeCore (applicant) on February 28, 2019, for a project that would deploy 56 diesel-fueled generators with a total backup generation capacity of up to 99 megawatts (MW) to enable the LDC to provide an uninterruptible power supply for its tenant's servers. EdgeCore proposes to build the LDC at 2201 Laurelwood Road in Santa Clara, California.

The Energy Commission is responsible for reviewing, and ultimately approving or denying, all thermal electric power plants, 50 MW and greater, proposed for construction in California. The SPPE process allows applicants, with projects between 50 and 100 MW, to obtain an exemption from the Energy Commission's jurisdiction and proceed with local approval rather than requiring an Energy Commission license. The Energy Commission can grant an exemption if it finds the proposed project would not create a substantial adverse impact on the environment or energy resources. In reviewing an SPPE application, the Energy Commission acts as the lead agency under section 25519(c) of the Public Resources Code and the California Environmental Quality Act (CEQA), and will perform any required environmental analysis.

## **PROJECT DESCRIPTION**

The LDC project site is 12 acres at 2201 Laurelwood Road in Santa Clara, Santa Clara County, California. The project site currently comprises a single parcel used for an industrial warehouse, manufacturing, and office purposes, in addition to surface parking. The former owner will demolish the existing buildings and structures as a condition of sale to EdgeCore. The applicant would construct the LDC, which would consist of 56 diesel-fired backup generators arranged in two generation yards. Each generation yard would serve one of two four-story server buildings. These generators would be distributed in redundant configurations (5 to make 4) to ensure uninterrupted power up to 99 MW, which is the maximum building load of the LDC. Each generator would include an approximately 10,300-gallon diesel fuel tank, located underneath each generator. The fuel tank would provide sufficient fuel storage to operate the generator at steady state continuous load for at least 48 hours. Each building's standby generators would receive support from an uninterruptible power supply system consisting of batteries, an inverter, and switches, to facilitate the uninterrupted transfer of electrical power supply from the Silicon Valley Power (SVP) substation to the onsite standby generators in the event of a utility or equipment failure. An approximately 29,000-square-foot substation would be located in the southwest corner of the project site, and an approximately 600-foot-long electrical supply line would head west from the LDC to tie into SVP's existing 60-kV distribution line on the west side of San Tomas Aquino Creek. Additional project features include electrical switchgear and distribution lines between the substation and buildings as well as from the backup generator yards and each respective building. CEQA requires the lead agency to consider the whole of the action. Therefore, the Energy Commission will include the entire data center project in its analysis, which includes the construction of two new four-story data center buildings along with the installation and operation of the generators.

The project site borders Juliette Lane and other industrial and commercial properties to the east, US-101 to the south, a parking lot to the west, and additional industrial and commercial properties to the north.

Energy Commission staff would like to consult with you to better understand Native American concerns regarding this project. Please respond to this letter in writing within 30 days if the The Ohlone Indian Tribe would like to consult.

If you would like to be notified by e-mail whenever a document is posted to the project website, you may sign up for the project listserv on the Energy Commission's main web page listed below.

To review the LDC SPPE application (19-SPPE-01), and find more information about the project and proceedings, please visit the project website:

<http://www.energy.ca.gov/sitingcases/laurelwood/>

Andrew Galvan  
March 26, 2019  
Page 3

The Energy Commission staff welcomes your comments or questions. If you have comments or questions, please contact Jessica Bonitz at (916) 653-2543 or [Jessica.Bonitz@energy.ca.gov](mailto:Jessica.Bonitz@energy.ca.gov).

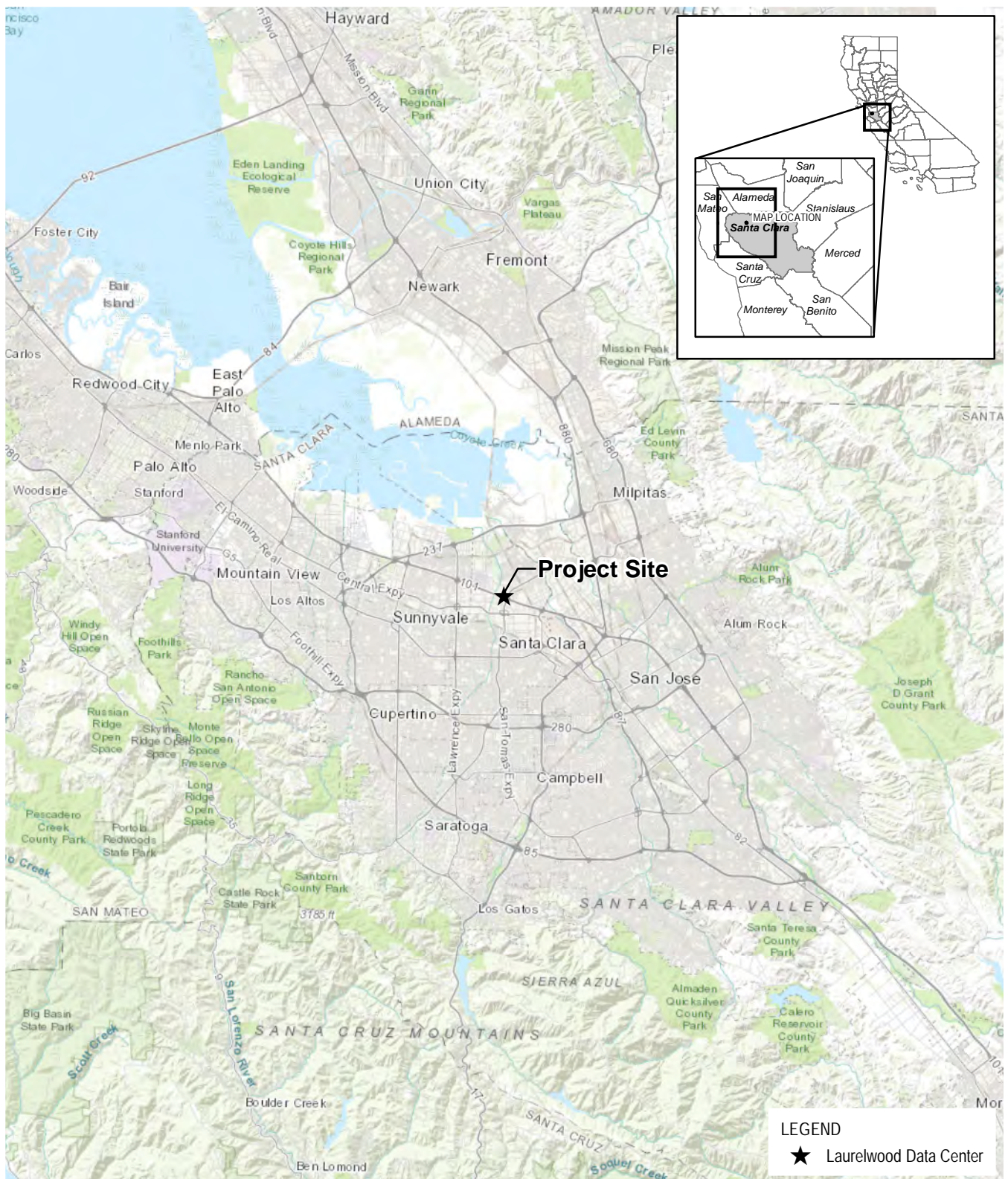
Sincerely,



Thomas Gates, Ph.D.

Tribal Liaison  
Supervisor  
Cultural Resources Unit  
Siting, Transmission, & Environmental  
Protection

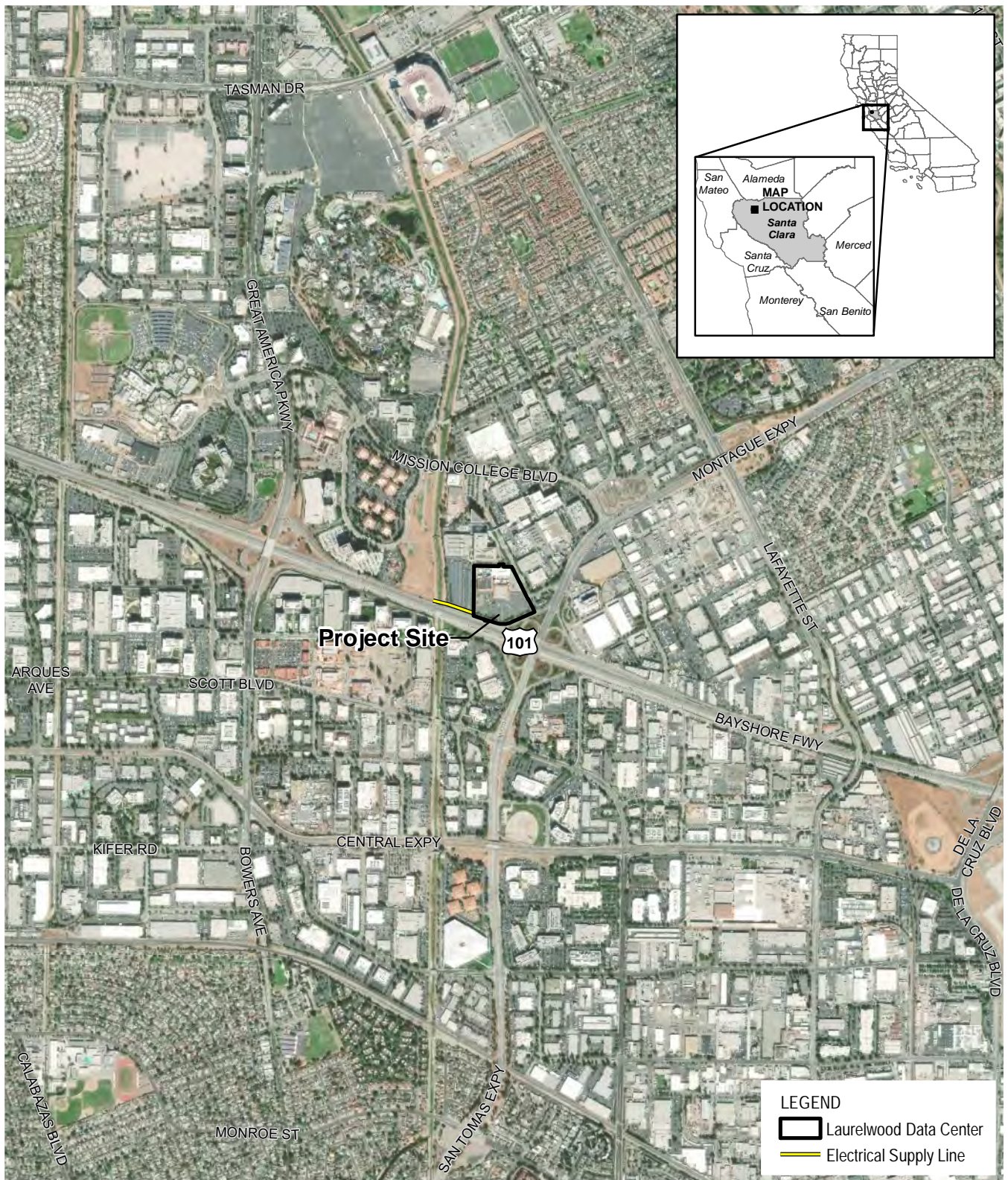
Enclosures: Regional Location Map  
Project Location Map



Source:  
ESRI Service Layer

Figure 1-1  
Regional Location  
Laurelwood Data Center  
Santa Clara, California





Source:  
ESRI Service Layer

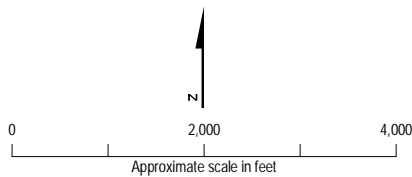


Figure 1-2  
Project Location  
Laurelwood Data Center  
Santa Clara, California

