

DOCKETED

Docket Number:	16-AFC-01
Project Title:	Stanton Energy Reliability Center
TN #:	224746
Document Title:	Energy Commission Staff's Response to the Committee Order for Resubmission of Maps to Conform to Evidence
Description:	N/A
Filer:	Marichka Haws
Organization:	California Energy Commission
Submitter Role:	Commission Staff
Submission Date:	9/18/2018 9:55:35 AM
Docketed Date:	9/18/2018

STATE OF CALIFORNIA
STATE ENERGY RESOURCES
CONSERVATION AND DEVELOPMENT COMMISSION

IN THE MATTER OF:

**STANTON ENERGY RELIABILITY
CENTER**

Docket No. 16-AFC-01

**ENERGY COMMISSION STAFF'S RESPONSE TO THE COMMITTEE ORDER FOR
RESUBMISSION OF MAPS TO CONFORM TO EVIDENCE**

After the Pre-Hearing Conference, the Committee assigned to the Stanton Energy Reliability Center (Stanton) reopened the record for the limited purpose of receiving corrected maps into evidence. Energy Commission staff have updated the maps to support evidence already received into the record, including updated labels, corrections to map legends, and the removal of the southern gas line alternative. The following maps have been corrected and are provided herein:

1. Exhibit 300, page 3-14 (Project Description – Figure 1)
2. Exhibit 300, page 3-16 (Project Description – Figure 3)
3. Exhibit 300, page 4.4-27 (Environmental Justice – Figure 1)
4. Exhibit 300, page 4.4-28 (Environmental Justice – Figure 2)
5. Exhibit 300, page 4.7-29 (Noise and Vibration – Figure 1)
6. Exhibit 300, page 4.11-48 (Traffic and Transportation – Figure 2)

This updated analysis does not change staff's conclusions that Stanton would not result in any significant adverse environmental impacts and would not result in any nonconformance with applicable laws, ordinances, regulations, or standards.

DATED: September 18, 2018

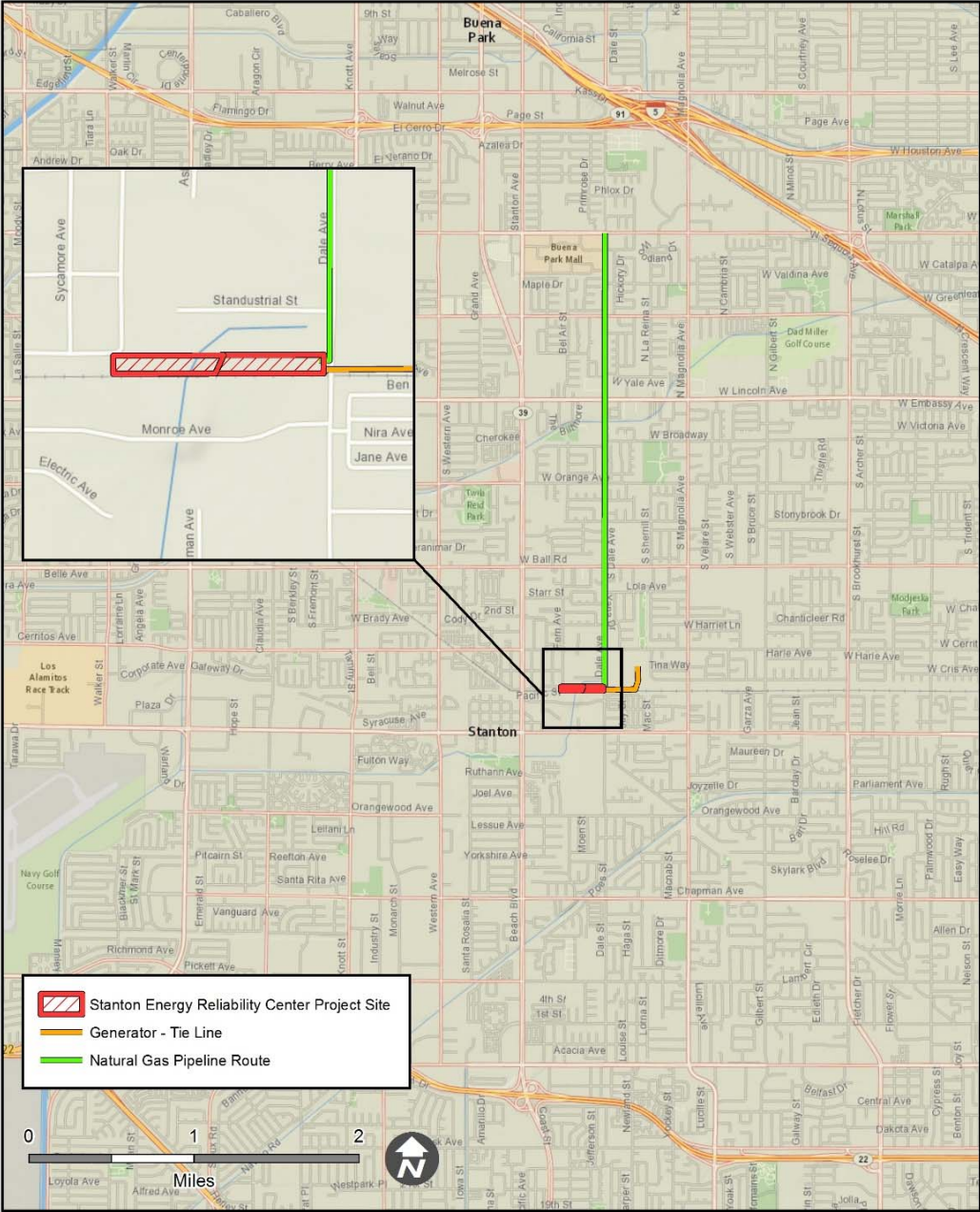
Respectfully submitted,

Originally signed by
JOHN HEISER
SITING – Project Manager
California Energy Commission
1516 9th Street, MS-15
Sacramento, CA 95814
Ph: (916) 653-8236
John.Heiser@energy.ca.gov

Stanton Energy Reliability Center (16-AFC-01) Resubmission of Maps to Conform to Evidence

Exhibit 300, Page 3-14 (Project Description – Figure 1)

PROJECT DESCRIPTION - FIGURE 1
Stanton Energy Reliability Center - Project Location



CALIFORNIA ENERGY COMMISSION - SITING, TRANSMISSION AND ENVIRONMENTAL PROTECTION DIVISION
SOURCE: CH2M, California Energy Commission, National Geographic World Map

PROJECT DESCRIPTION

Exhibit 300, Page 3-16 (Project Description – Figure 3)

PROJECT DESCRIPTION - FIGURE 3
Stanton Energy Reliability Center - Construction Worker Parking Area

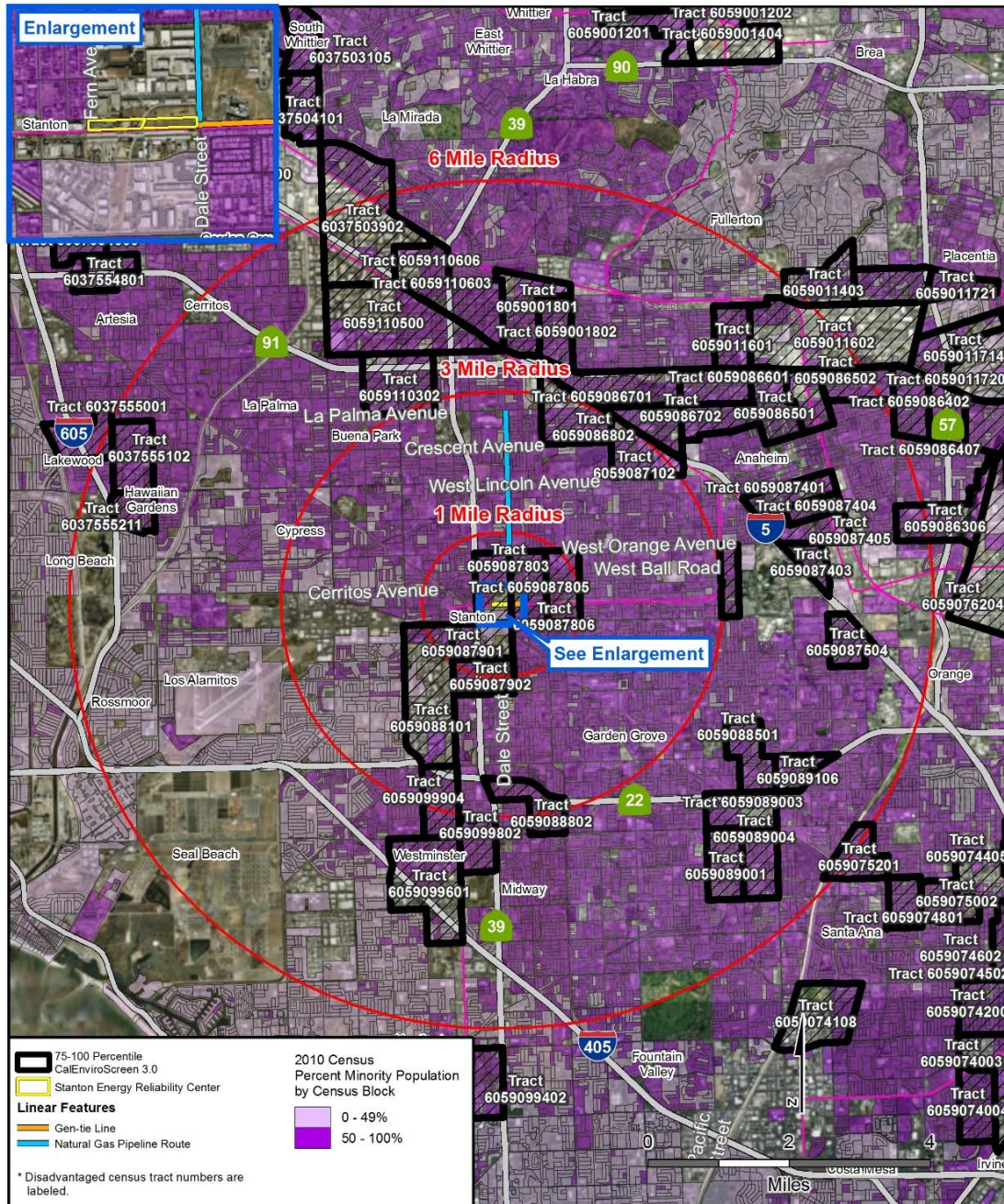


CALIFORNIA ENERGY COMMISSION - SITING, TRANSMISSION AND ENVIRONMENTAL PROTECTION DIVISION
SOURCE: AFC Figure 2.1-5

PROJECT DESCRIPTION

Exhibit 300, Page 4.4 -27 (Environmental Justice – Figure 1)

ENVIRONMENTAL JUSTICE - FIGURE 1
 Stanton Energy Reliability Center - Census 2010 Minority Population by Census Block
 with CalEnviroScreen Disadvantaged Communities by Census Tracts



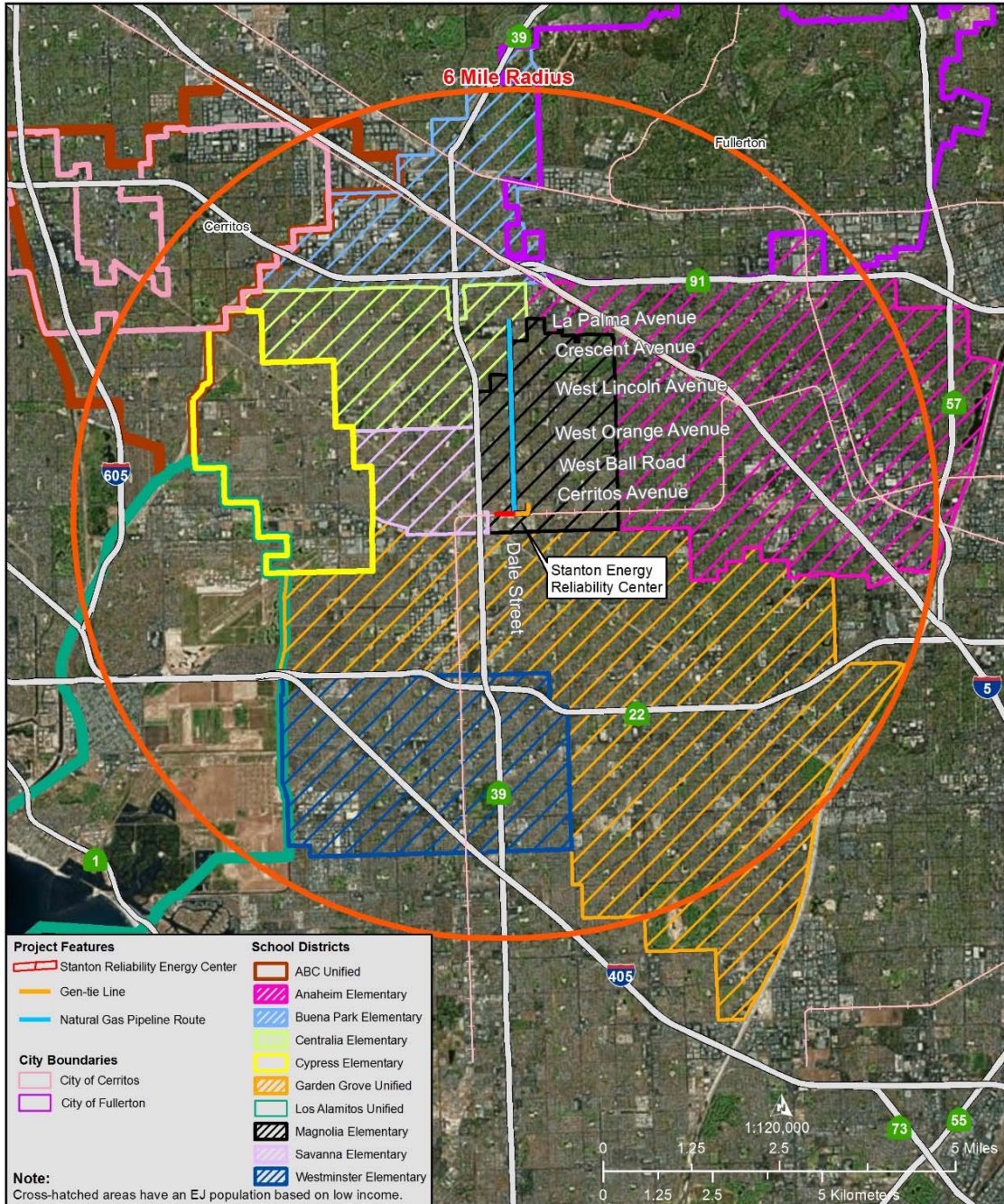
CALIFORNIA ENERGY COMMISSION - SITING, TRANSMISSION AND ENVIRONMENTAL PROTECTION DIVISION
 SOURCES: Census 2010 PL 94-171 Data and CalEnviroScreen 3.0 CalEPA 2017

ENVIRONMENTAL JUSTICE

Exhibit 300, Page 4.4 -28 (Environmental Justice – Figure 2)

ENVIRONMENTAL JUSTICE - FIGURE 2

Stanton Energy Reliability Center - Boundaries Used to Identify Environmental Justice Population Based on Low Income



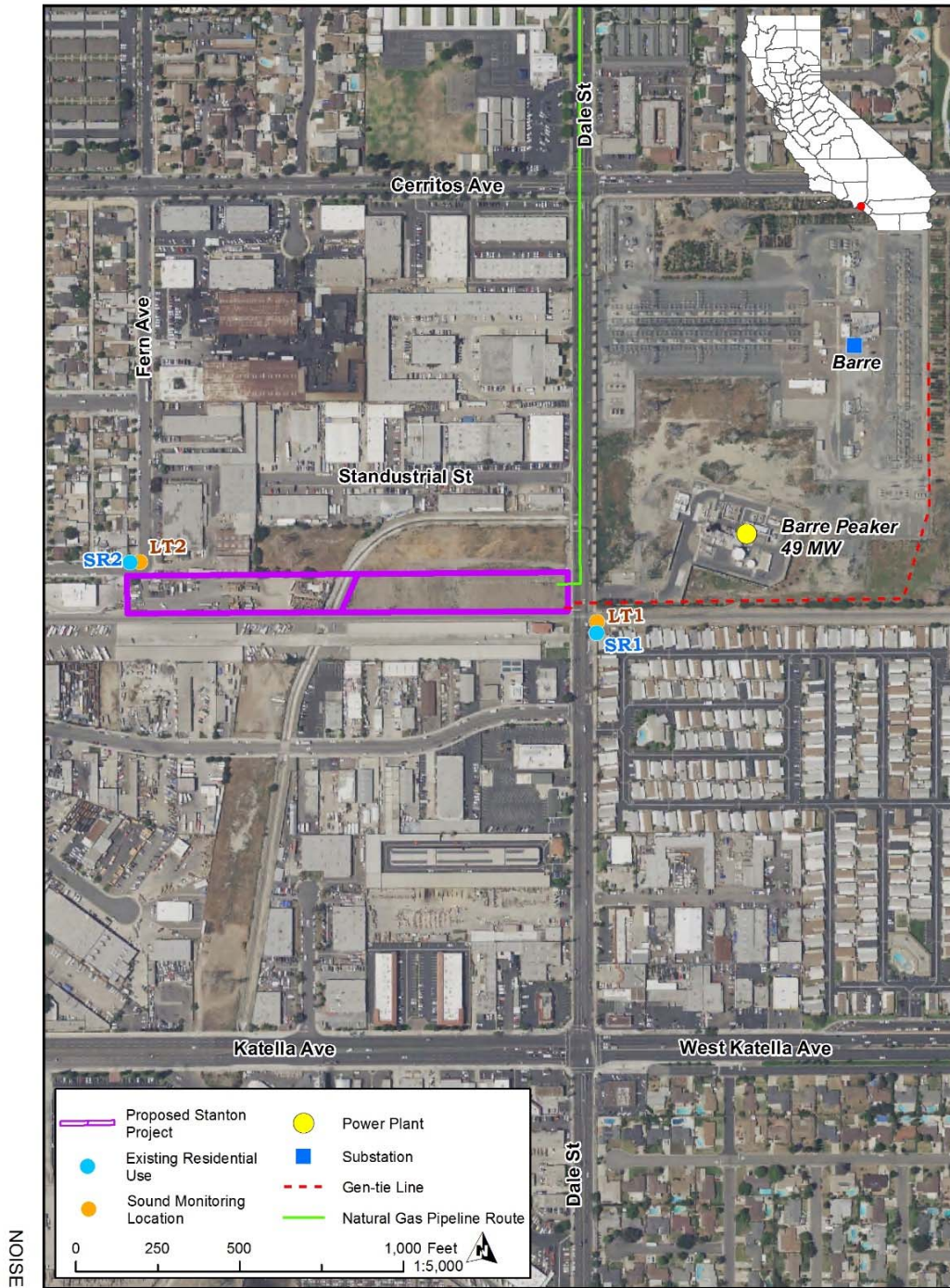
CALIFORNIA ENERGY COMMISSION - SITING, TRANSMISSION AND ENVIRONMENTAL PROTECTION DIVISION

SOURCES: US Census Bureau 2016, S1701 ACS 5-Year Estimates, ESRI, OpenStreetMap, Bing Aerial

ENVIRONMENTAL JUSTICE

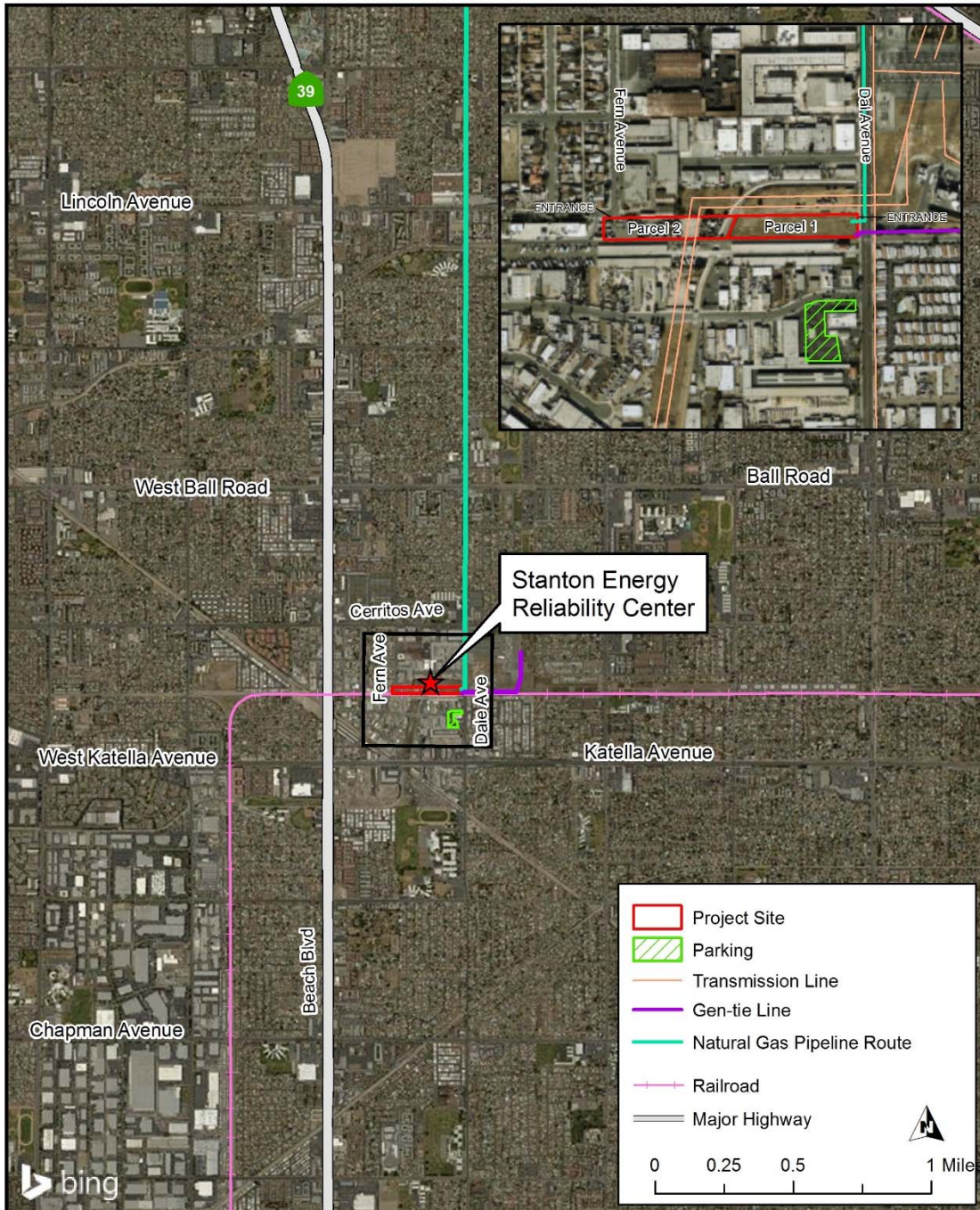
Exhibit 300, Page 4.7 -29 (Noise and Vibration – Figure 1)

NOISE - FIGURE 1
 Stanton Energy Reliability Center - Sound Monitoring Locations



CALIFORNIA ENERGY COMMISSION - SITING, TRANSMISSION AND ENVIRONMENTAL PROTECTION DIVISION
 SOURCE: CH2M Hill Figure 5.7-1, USDA NAIP Imagery 2016, OpenStreetMap 2017

TRAFFIC AND TRANSPORTATION - FIGURE 2
 Stanton Energy Reliability Center - Local Traffic and Transportation Setting



CALIFORNIA ENERGY COMMISSION - SITING, TRANSMISSION AND ENVIRONMENTAL PROTECTION DIVISION
 SOURCE: Open Street Map, ESRI World Street Map, California Department of Transportation

TRAFFIC AND TRANSPORTATION

**DECLARATION OF
John Heiser**

I, John Heiser declare as follows:

I am presently employed by the California Energy Commission in the Siting, Transmission and Environmental Protection (STEP) Division, Environmental Protection Office as a Planner III.

A copy of my professional qualifications and experience was received into evidence in Exhibit 300 and is incorporated by reference herein.

I supervised the preparation of Staff's Response to the Committee Order for Resubmission of Maps to Conform to Evidence based on the Application For Certification and supplements thereto, data from reliable documents and sources, and my professional experience and knowledge.

It is my testimony and professional opinion that these corrected maps accurately reflect the state of the evidence and conform to the Stanton Energy Reliability Center as proposed by applicant and as analyzed by staff and are accurate with respect to the issue(s) addressed therein.

I am personally familiar with the facts and conclusions related in the testimony and if called as a witness could testify competently thereto.

I declare under penalty of perjury that the foregoing is true and correct to the best of my knowledge and belief.

Dated: 09/18/2018 Signed: 

At: Sacramento, California