

DOCKETED

Docket Number:	18-EVI-01
Project Title:	California Plug-in Electric Vehicle Infrastructure Projections
TN #:	224123
Document Title:	Presentation - CA EV Infrastructure Projections
Description:	CEC Workshop 5/23/18 - Presentation by Jamie Hall
Filer:	Jessica Martinez
Organization:	MAVEN
Submitter Role:	Public
Submission Date:	7/11/2018 1:24:48 PM
Docketed Date:	7/11/2018

The logo for Maven, featuring the word "MAVEN" in a white, sans-serif font. The letter "A" is stylized with a yellow double-line outline.

MAVEN

CA EV Infrastructure Projections

CEC Workshop 5/23/18

●
Jamie Hall

General Motors Public Policy and Maven

Maven Offerings



MAVEN CITY

Open sharing model allowing members to make reservations for station-based use of a variety of vehicles located around the city



MAVEN HOME

Maven Home is a closed sharing model for residential communities with added white-glove service



MAVEN GIG

Allows ride-share and delivery drivers to make extended rentals of a quality vehicle at a great value including insurance maintenance and charging

Maven Removes the Barriers to Sharing



Service brand for shared access by different demand pools



Member services

Real-world ridesharing ops and learning with Bolt EVs



Fleet Management:
Registration, repairs, transport, maintenance, lifecycle & residual management, financing, insurance

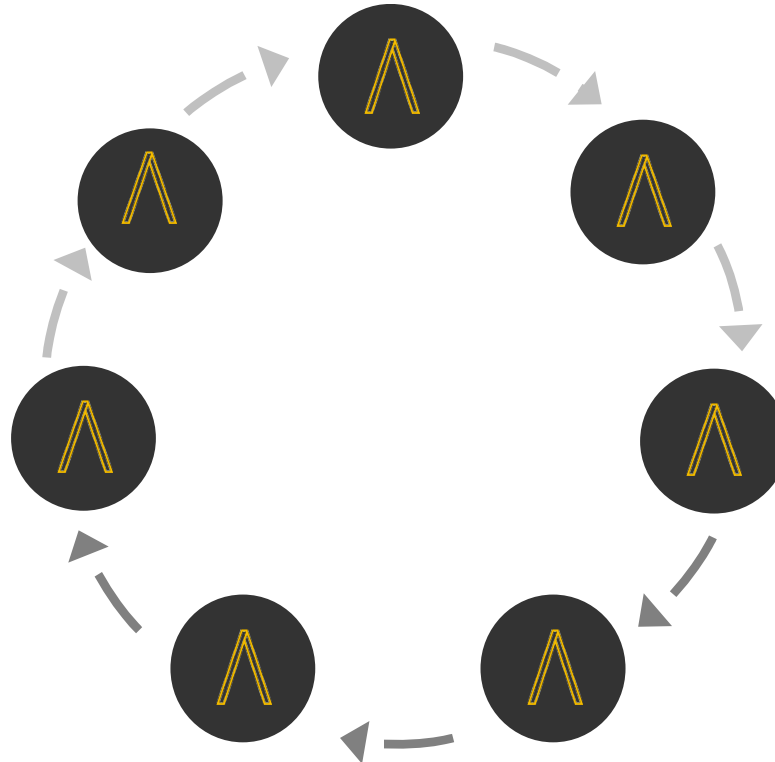
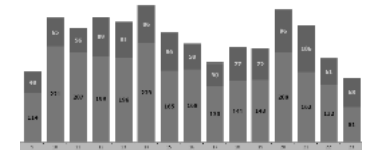
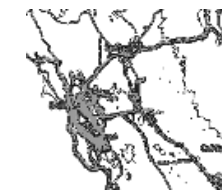
Physical infrastructure



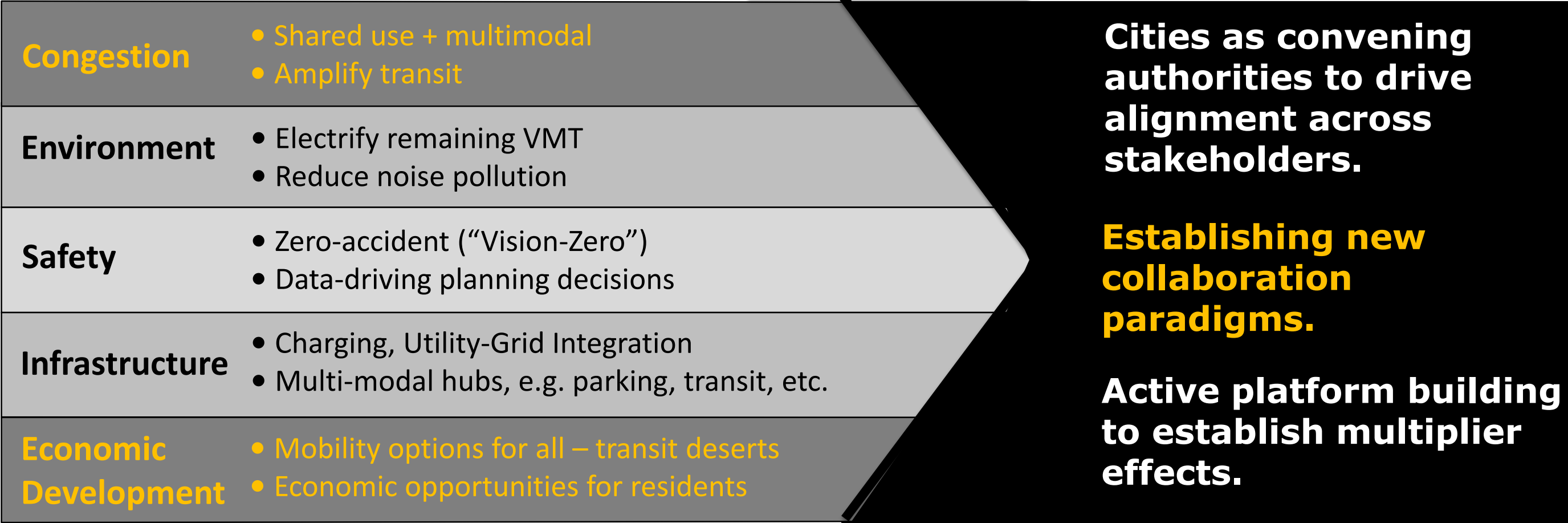
Public sector:
Tax, regulatory, utilities, municipalities



Telemetry, Data Science



Designing Next-generation Transportation Ecosystems



Bolt EV Deployment

>800 Bolts (15+ months)

~12 million
miles driven

>1 million
passengers

~125K+
charging events

~475,000
gallons of gas saved

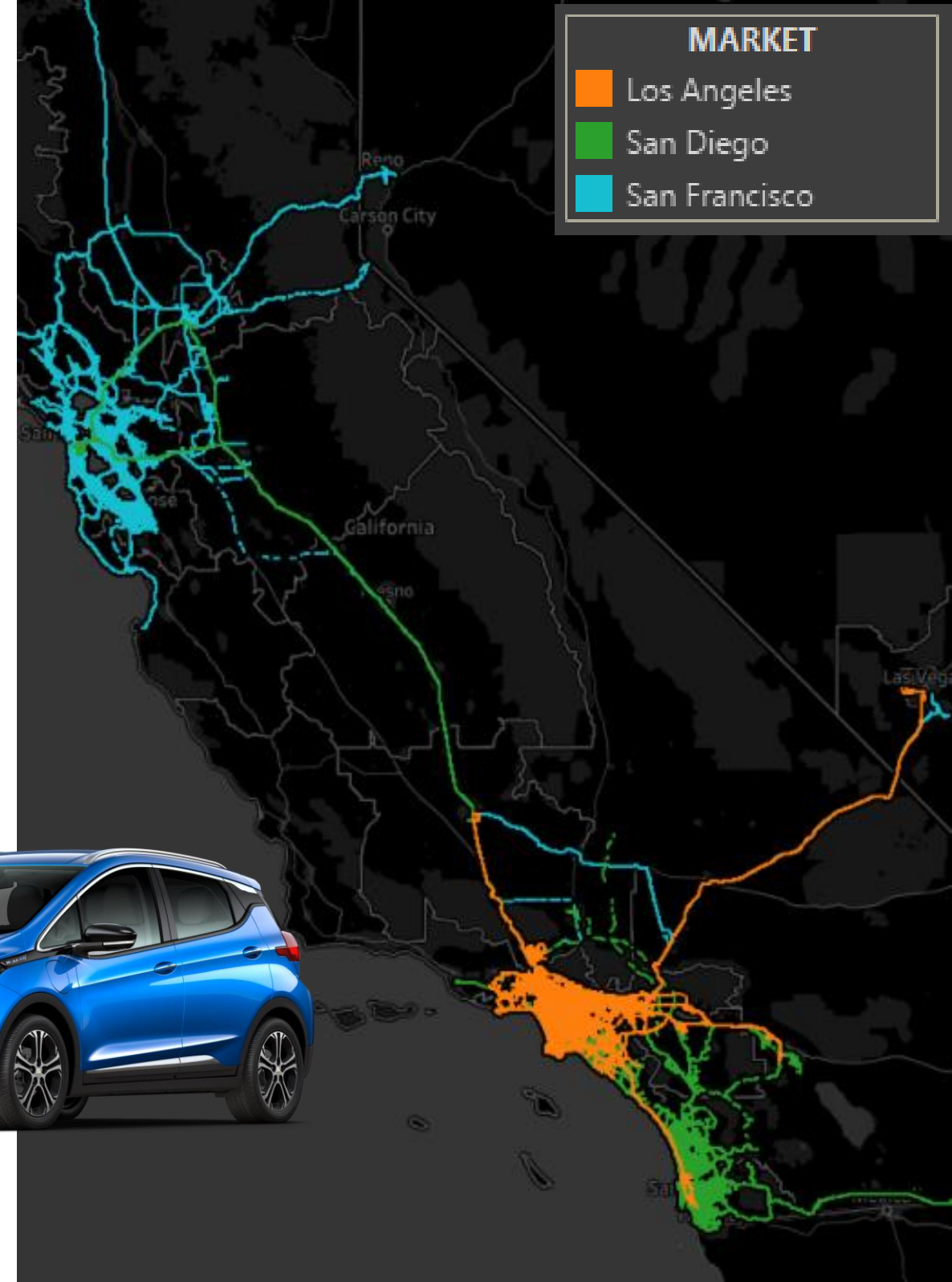
Commercial and personal usage patterns

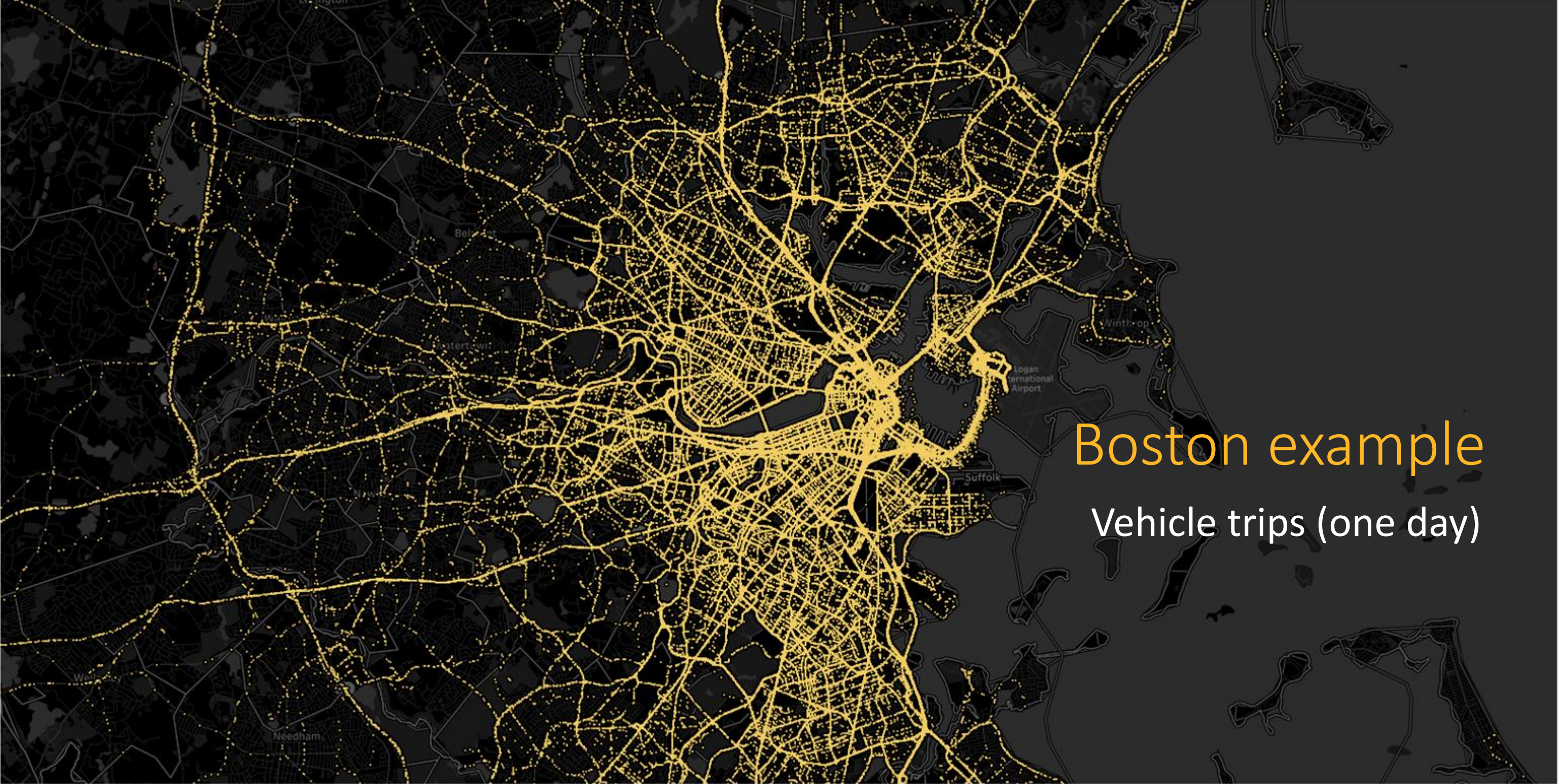
Helping to solve the public EV infrastructure conundrum

Coordinated fleet rollout with committed demand =
stimulate creation of public infrastructure and healthy private sector supply

Real-world duty cycle for future AV platform

- Stop-and-go, in-city driving
- >95% DC fast charge
- Demand-driven trip patterns – movement & non-movement
- Layering use types: people + packages
- Complementary channel to retail sales: those “outside funnel”





Boston example
Vehicle trips (one day)




Vehicle Dwell Locations

- Stationary for 6 hours or more
- Large circles indicate greater numbers of distinct vehicles
- Counts were grouped according to the associated latitude / longitude (by square kilometer) *anonymized*

Boston

Building an initial urban core DCFC network



 **High Power Stations**
DC fast charge or Superchargers

Potential area 

Public/Private Partnership Model Enables Future of Mobility



Uniquely capable vehicle platform

Connected, electric



Physical infrastructure

Transit-adjacent parking, charging, + 'muster' space



Sharing platform

IT backbone, customer app, fleet operations



Personal mobility access

Gig jobs

Zero-emission miles

First mile / last mile integration to amplify and enable other modes, e.g. mass transit

"AV ready" cities with future foundation in place

MAVVEN

#BeThere