



March 13, 2010

Ms. Magdalena Rodriquez
California Department of Fish and Game
Inland Deserts Region
3602 Inland Empire Blvd. Suite C220
Ontario, CA 91764

SUBJECT: Revisions to Jurisdictional Waters for the Genesis Solar Energy Project

Dear Ms. Rodriquez,

On February 17, 2010, you attended a field visit to the Genesis Solar Energy Project, primarily to evaluate tortoise habitat. During that site visit, you walked a portion of the Plant Site (project footprint) and took the opportunity to look at any water features (e.g., drainages, washes) you encountered. You evaluated a few of the delineated drainages in the *Jurisdictional Waters and Wetlands Report* for the Genesis Solar Energy Project (submitted in January 2010) to see if you agreed with the assessment. Additionally, you took note of water features that were not included in the report, but felt met the criteria for state waters, and should thus be included in the delineation report and impact calculations.

Genesis Solar, LLC (Genesis Solar) understands that your assessment is based only on the areas that you walked and that it is not a complete verification of the delineated drainages within the Project area. However, based on your field visit, you have determined that most of the western portion of the Plant Site is flat with low channels that exhibit a sheet flow pattern, as well as short narrow channels that come in and out of existence.

Per your request, Genesis Solar has revised the appropriate table and figures to depict the drainages you delineated in the field on February 17, 2010. Specifically, updates have been made to Appendix C. *Washes and Microphyllous Vegetation Directly Impacted by Project Facilities* and Map Sheets 2, 4, 5, 11, and 12 of the *Jurisdictional Waters and Wetlands Report* submitted in January 2010. The added drainages result in an additional 7.80 acres of permanent impact, 0.00 acres of temporary impact, 2 additional impacted trees (ironwood trees), and 0.00 acres of microphyll vegetation areas. The area permanently impacted by the Project is now 72.64 acres.

Genesis Solar understands that by incorporating the additional drainages that you delineated in the field, and by adjusting the impact calculations, that CDFG will find the waters delineation for the Genesis Solar Energy Project satisfactory and complete.



Revisions to Jurisdictional Waters
Genesis Solar Energy Project
March 13, 2010

Should you have any questions, please do not hesitate to contact me at me at 303.980.9509 (office) or 714.478.7171 (cell), or Tricia Bernhardt at 303.980.3727 (office) or 720.320.8382 (cell).

Sincerely,

A handwritten signature in cursive script that reads "Emily Festger".

Emily Festger
Tetra Tech EC, Inc.

Cc: Mike Monosmith (CEC)
Susan Sanders (CEC)
Carolyn Chainey-Davis (CEC)
Kim Nicol (CDFG)
Scott Busa (Genesis Solar, LLC)
Meg Russell (Genesis Solar, LLC)
Kenneth Stein (Genesis Solar, LLC)
Tricia Bernhardt (Tetra Tech EC, Inc.)

Attachment

Appendix C. Washes and Microphyll Vegetation Directly Impacted by Project Facilities

Map ID	Location*	Average Bed Width (ft)	Average Bank Height (in.)	Delineated Length (ft)	Temporary Impact (acres)	Permanent Impact (acres)	Impact Area (acres)**	No. of Trees > 4" in Diameter Associated with Washes)	No. of Directly Impacted Trees	Directly Impacted Microphyll Vegetation Areas (acres)	Notes
1	Plant Site	10	6	909	n/a	0.21	0.21	0	0	0.07	Verified by field survey; Acreages of microphyll vegetation areas calculated using GIS
2	Plant Site	5	6	3886	n/a	0.45	0.45	0	0	0.00	Verified by field survey
3	Plant Site	3	6	2879	n/a	0.20	0.20	0	0	0.00	Verified by field survey
4	Plant Site	18	6	5388	n/a	2.23	2.23	0	0	0.00	Verified by field survey; Old road
5	Plant Site	7	6	214	n/a	0.03	0.03	0	0	0.00	Verified by field survey
6	Plant Site	8	6	451	n/a	0.08	0.08	0	0	0.00	Verified by field survey
7-10	Plant Site	8.5 (average for washes 7-10)	6	1400	n/a	20.91	20.91	IW(1), PV (1)	IW(1), PV (1)	0.04	Based on aerial; Acreages calculated using GIS; Contains field verified washes 7-10
11	Plant Site	3	6	1238	n/a	0.09	0.09	0	0	0.00	Verified by field survey
12	No Longer in Project Area	n/a	n/a	n/a	n/a	n/a	n/a	n/a	n/a	n/a	No Longer in Project Area; Verified by field survey
13	No Longer in Project Area	n/a	n/a	n/a	n/a	n/a	n/a	n/a	n/a	n/a	No Longer in Project Area; Verified by field survey
14-19	T-line	7 (average for washes 14-19)	11	1474	0.00	0.00	0.00	IW (1)	0	0.00	Based on aerial; Acreages calculated using GIS; Contains field verified washes 14-19
	Gas Line				0.42	0.00	0.42		0	0.00	
	Access Road				1.48	0.44	1.92		0	0.00	
20	No Longer in Project Area	n/a	n/a	n/a	n/a	n/a	n/a	n/a	n/a	n/a	No Longer in Project Area; Verified by field survey
21	No Longer in Project Area	n/a	n/a	n/a	n/a	n/a	n/a	n/a	n/a	n/a	No Longer in Project Area; Verified by field survey
22	No Longer in Project Area	n/a	n/a	n/a	n/a	n/a	n/a	n/a	n/a	n/a	No Longer in Project Area; Verified by field survey
23	No Longer in Project Area	n/a	n/a	n/a	n/a	n/a	n/a	n/a	n/a	n/a	No Longer in Project Area; Verified by field survey
24-26	T-line	52 (average for washes 24-26)	13	12971	0.47	0.00	0.47	PV (832)	22	0.47	Based on aerial; Acreages calculated using GIS; Contains field verified washes 24-26; Tree count based on aerial
	Gas Line				1.64	0.00	1.64		67	1.64	
	Access Road				10.10	3.05	13.16		181	13.16	
27	No Longer in Project Area	n/a	n/a	n/a	n/a	n/a	n/a	n/a	n/a	n/a	No Longer in Project Area; Verified by field survey
28	No Longer in Project Area	n/a	n/a	n/a	n/a	n/a	n/a	n/a	n/a	n/a	No Longer in Project Area; Verified by field survey
29	No Longer in Project Area	n/a	n/a	n/a	n/a	n/a	n/a	n/a	n/a	n/a	No Longer in Project Area; Verified by field survey
30	T-line	5 (average of several washes)	--	1507	0.06	36.26	36.32	0	0	0.00	Based on aerial, no field verification; Acreages calculated using GIS; Man-made borrow pit
	Gas Line				0.64	0.00	0.64		0	0.00	
	Access Road				2.52	0.77	3.29		0	0.00	

Appendix C. Washes and Microphyll Vegetation Directly Impacted by Project Facilities

Map ID	Location*	Average Bed Width (ft)	Average Bank Height (in.)	Delineated Length (ft)	Temporary Impact (acres)	Permanent Impact (acres)	Impact Area (acres)**	No. of Trees > 4" in Diameter Associated with Washes)	No. of Directly Impacted Trees	Directly Impacted Microphyll Vegetation Areas (acres)	Notes
31	Transmission Line	297	--	862	0.06	0.00	0.06	HM (50)	5	0.06	Based on aerial, no field verification; Acreages calculated using GIS; tree count based on aerial - species determination based on data from biological resource survey data
	Access Road				0.47	0.13	0.59		17	0.59	
	Gas Line				0.00	0.00	0.00		0	0.00	
61-63	Plant Site	1.5 - 2.5	--	1,902	0.00	3.500	3.50	IW (2)	2	0.00	Washes 61-63 are treated as one area of connected small drainages; acreages calculated using GIS; based on February 2010 CDFG field survey
64-66	Plant Site	1.5 - 2.5	--	1,910	0.00	4.200	4.200	IW (1)	1	0.00	Washes 64-66 are treated as one area of connected small drainages; acreages calculated using GIS; based on February 2010 CDFG field survey
67	Plant Site	1.50	--	1,082	0.00	0.040	0.040	0	0	0.00	Based on February 2010 CDFG field survey
68	Plant Site	1.50	--	478	0.00	0.020	0.020	0	0	0.00	Based on February 2010 CDFG field survey
69	Plant Site	2 - 2.5	--	458	0.00	0.030	0.030	0	0	0.00	Based on February 2010 CDFG field survey
70	Plant Site	2	--	141	0.00	0.006	0.006	0	0	0.00	Based on February 2010 CDFG field survey
71	Plant Site	1	--	204	0.00	0.004	0.004	0	0	0.00	Based on February 2010 CDFG field survey
				Total	17.86	72.64	90.49	888	298	16.03	

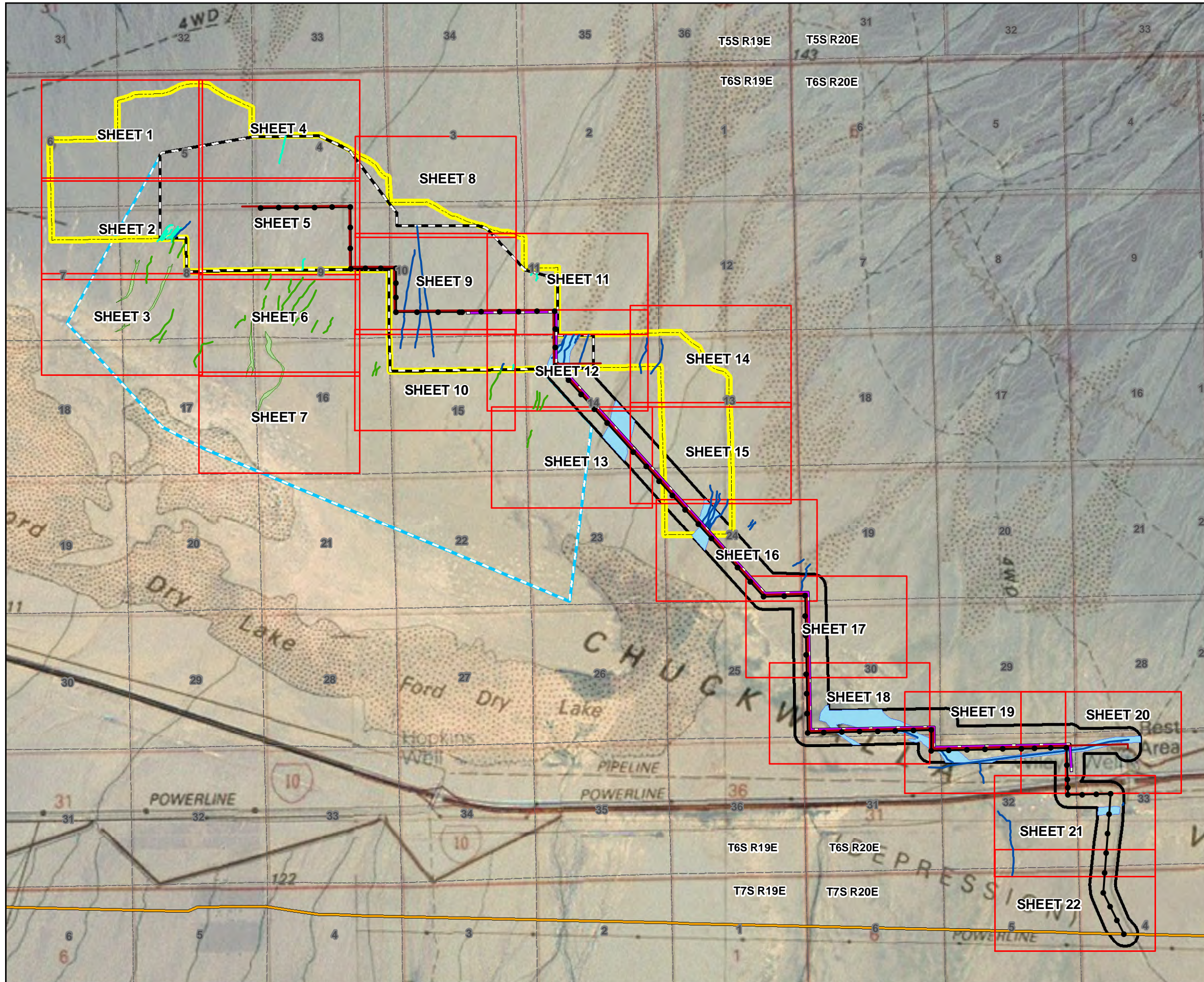
* Includes washes within 500 ft. survey buffer area

** Transmission line impact calculations include stub roads

IW - Ironwood

PV - Palo Verde

HM - Honey Mesquite



GENESIS SOLAR, LLC

GENESIS SOLAR ENERGY PROJECT
RIVERSIDE COUNTY,
CALIFORNIA



Legend

- Transmission Interconnect Structure
- Access Road
- Gas Line
- Transmission Interconnect
- Blythe Transmission Line
- ▭ BLM Requested ROW
- ▭ Facility Footprint
- ▭ Linear Facility Survey Area
- ▭ Section Line
- ▭ 1:4800 Detail Map Sheet
- June 2009 Field Verified Jurisdictional Waters of the State

February 2010

- ▭ Field Verified Jurisdictional Waters of the State
- ▭ February 2010 Field Verified Jurisdictional Waters of the State

December 2009 Aerial Map Survey

- ▭ Jurisdictional Waters of the State (Field Verified)

December 2009 - Aerial Map Survey

- ▭ Jurisdictional Waters of the State (Potential)
- ▭ Jurisdictional Waters of the State (Potential)
- ▭ Downstream Wash Evaluation Area (Aerial Mapping)

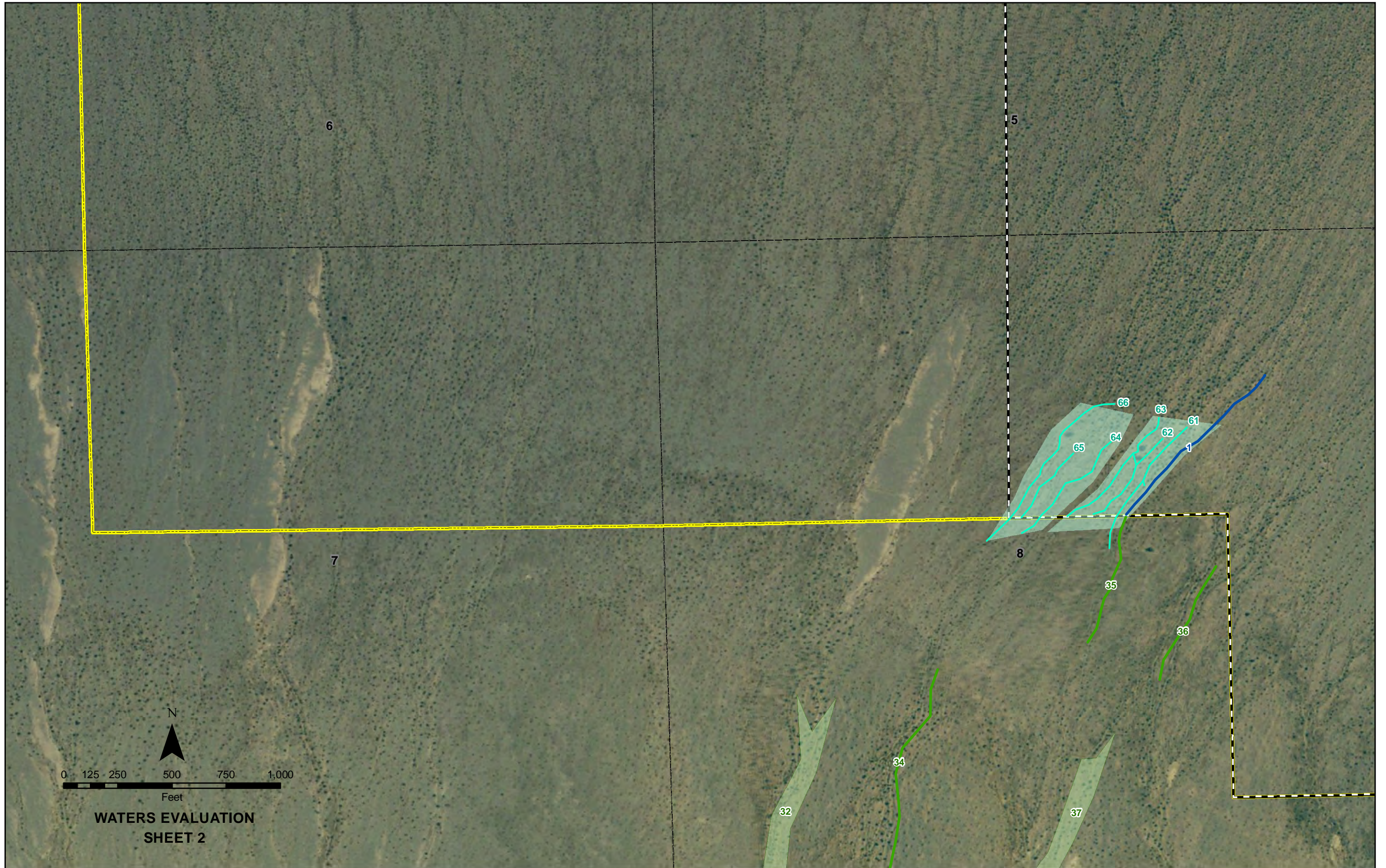
Notes:
 (a) UTM Zone 11, NAD 1983 Projection.
 (b) Source data: ESRI, BLM, eGIS, TTEC

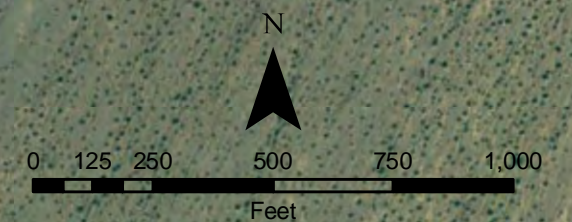
0 0.25 0.5 0.75 1 Miles

N

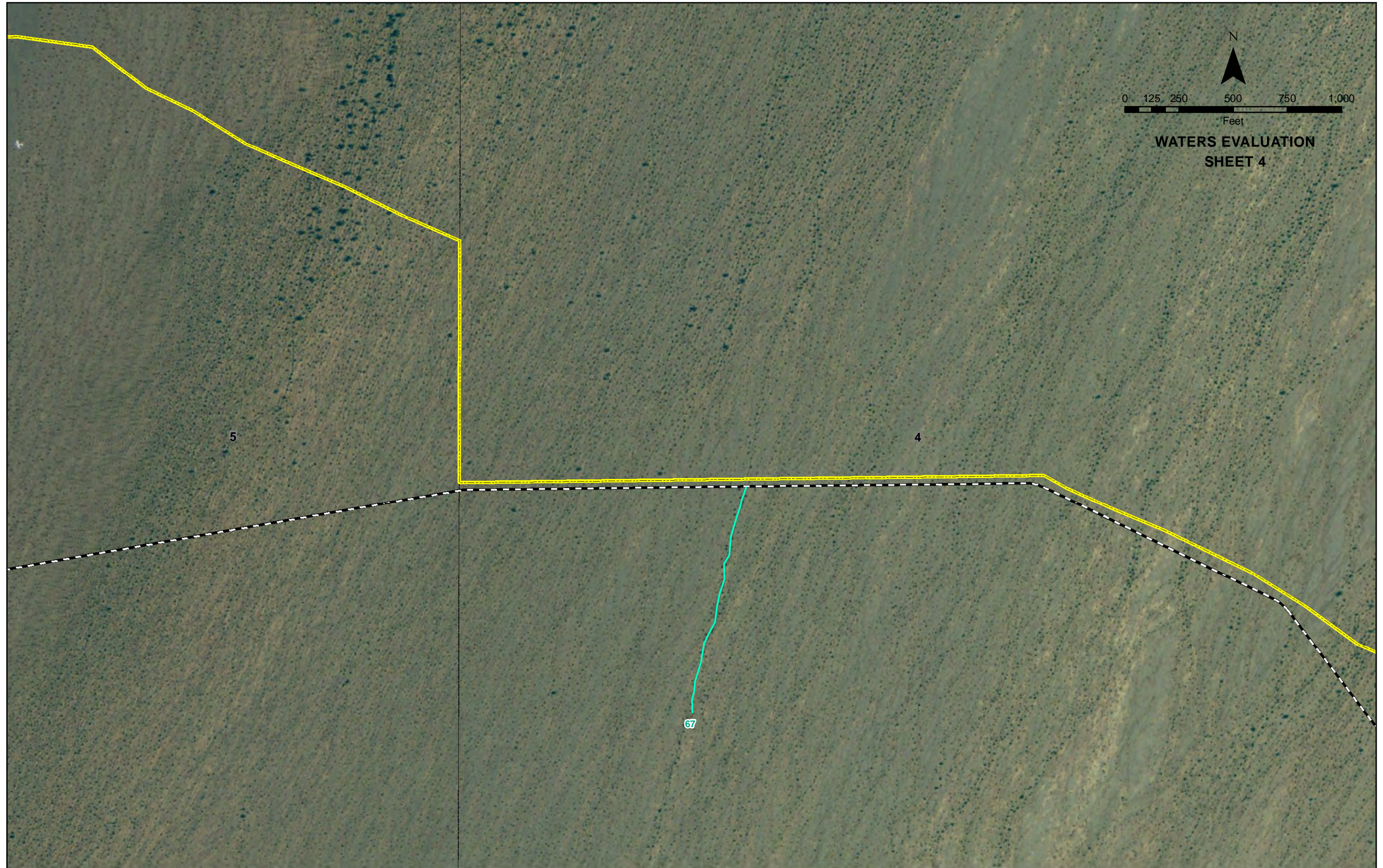
WATERS EVALUATION
INDEX MAP

TETRA TECH EC, INC



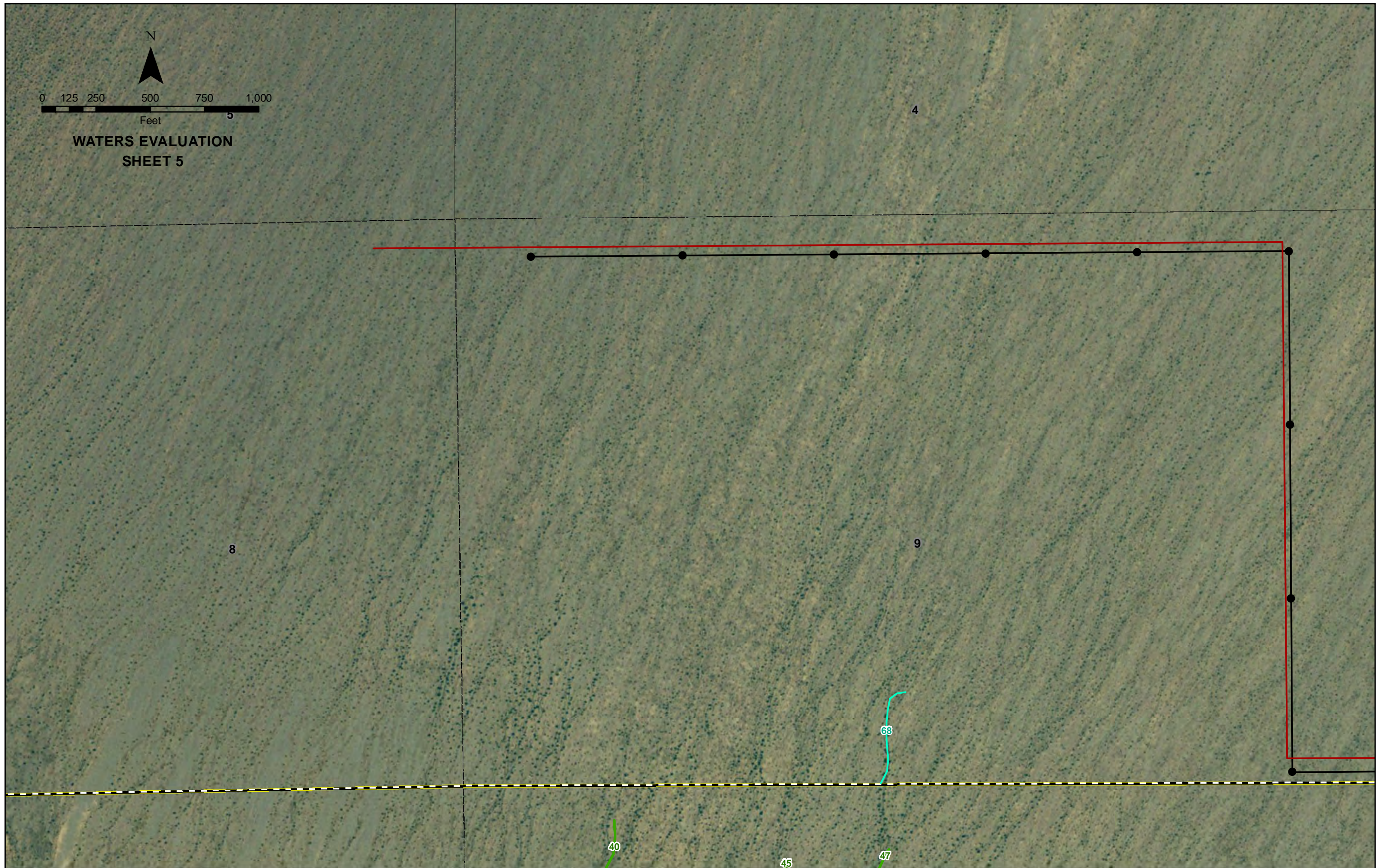


**WATERS EVALUATION
SHEET 4**





**WATERS EVALUATION
SHEET 5**



4

8

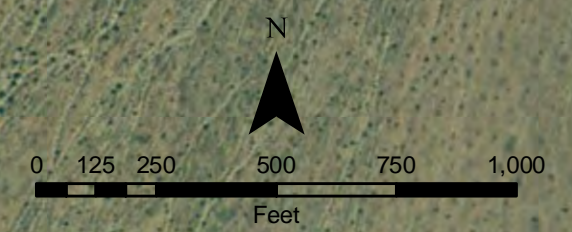
9

68

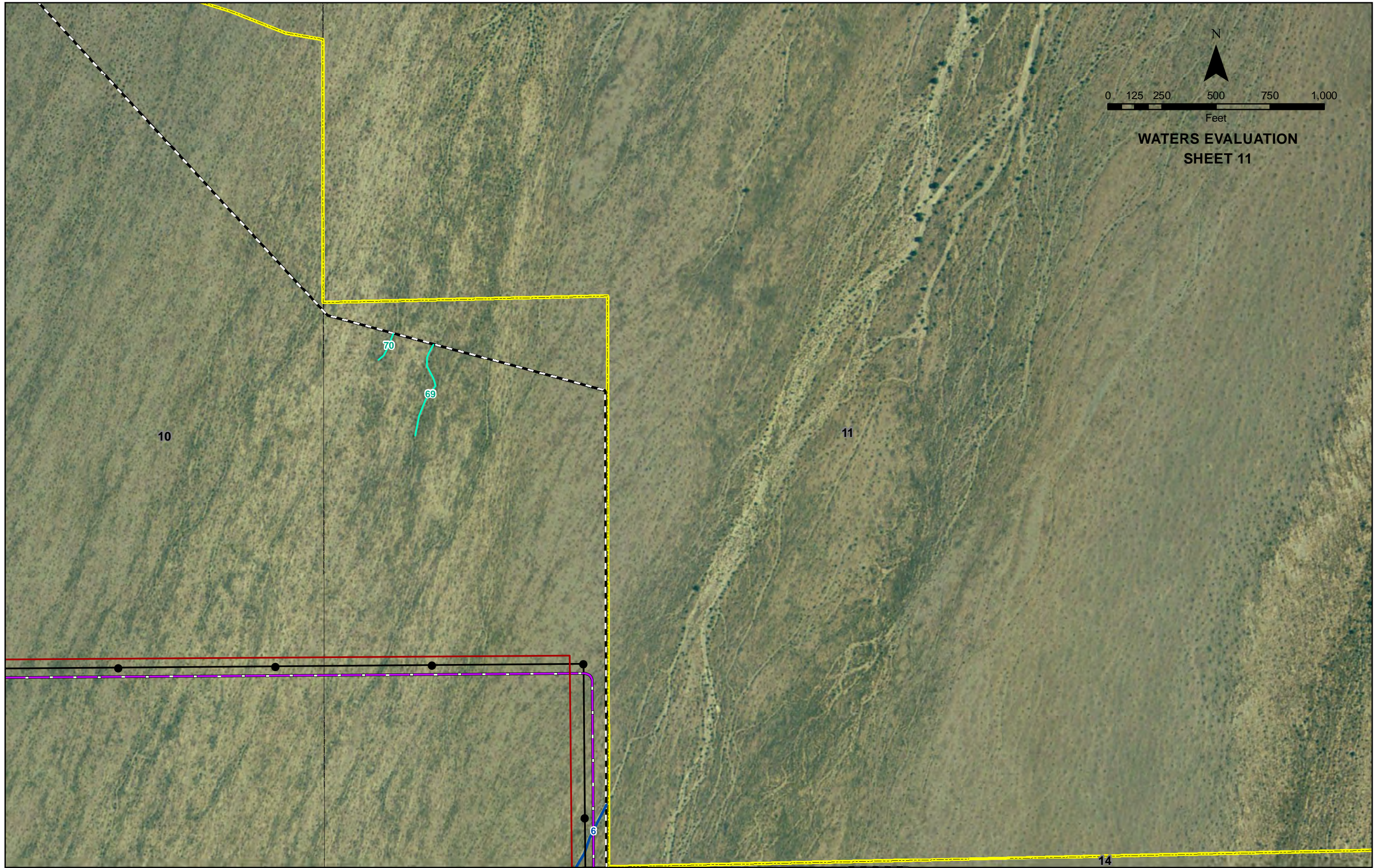
40

45

47



**WATERS EVALUATION
SHEET 11**





**WATERS EVALUATION
SHEET 12**

