

Job No. 15004	Company WDC EXPLORATION & WELLS
Well TW-2	Field FORD DRY LAKE
County RIVERSIDE	State CA

Location:
1/4 Mile N of 10 Fwy @ Wileys Well Road
GPS: N330 36.748' W1140 54.485'

Sec. _____ Twp. _____ Rge. _____

Other Services:
LL3/GR
SNCR/DL
DIL/DEV
CAL

Permanent Datum	G.L.	Elevation above perm. datum	Elevation K.B. D.F. G.L.
Log Measured From	G.L.	0'	
Drilling Measured From	G.L.		
Date			
Run Number	ONE		
Depth Driller	1835'		
Depth Logger	1840'		
Bottom Logged Interval	1840'		
Top Log Interval	30'		
Casing Driller	11" @ 40'		
Casing Logger	40'		
Bit Size	10.625" @ 1240'	10" @ 1835'	
Type Fluid in Hole	BENTONITE		
Density / Viscosity	NA		
pH / Fluid Loss	NA		
Source of Sample	PIT		
Rm @ Meas. Temp	4.90 @ 77F		
Rmf @ Meas. Temp	3.90 @ 77F		
Rmc @ Meas. Temp	NA		
Source of Rmf / Rmc	MEAS		
Rm @ BHT	NA		
Time Circulation Stopped	4 HOURS		
Time Logger on Bottom	0520 pm		
Max. Recorded Temperature	NA		
Equipment Number	PS-1		
Location	LA		
Recorded By	Ozman Trad		
Witnessed By	Nat Beal		

<<< Fold Here >>>

All interpretations are opinions based on inferences from electrical or other measurements and we cannot and do not guarantee the accuracy or correctness of any interpretation, and we shall not, except in the case of gross or willful negligence on our part, be liable or responsible for any loss, costs, damages, or expenses incurred or sustained by anyone resulting from any interpretation made by any of our officers, agents or employees. These interpretations are also subject to our general terms and conditions set out in our current Price Schedule.

Comments

DOCKET

09-AFC-8

DATE	12/18/09
RECD.	12/21/09

ELOG Calibration Report

Serial:	D1
Model:	DTQ
Shop Calibration Performed:	Wed Sep 30 18:06:23 2009
Before Survey Verification Performed:	Mon Aug 06 11:54:10 2007
After Survey Verification Performed:	Mon Aug 06 11:54:38 2007

Shop Calibration

	Readings			References			Results	
	Zero	Cal		Zero	Cal		Gain	Offset
Short	11.208	103.455		10.200	102.200	Ohm-m	0.997	-0.978
Long	3.344	89.080		10.200	102.200	Ohm-m	1.073	-15.746
IEE	30.037	6022.654	counts	0.033	6.591	A		
VSN	98.194	6827.093	counts	1.873	130.218	V		
VLN	83.806	1710.224	counts	1.598	32.620	V		

Before Survey Verification

	Readings			References			Results	
	Zero	Cal		Zero	Cal		Gain	Offset
Short	183.906	100.821		9.828	100.799	Ohm-m	-1.095	211.190
Long	422.542	101.924		101.776	101.776	Ohm-m	-0.317	134.130
IEE	59.028	6394.075	counts	0.065	6.998	A		
VSN	121.963	7242.794	counts	2.326	138.147	V		
VLN	70.056	1830.495	counts	1.336	34.914	V		

After Survey Verification

	Readings			References			Results	
	Zero	Cal		Zero	Cal		Gain	Offset
Short	117.548	100.824		183.906	100.821	Ohm-m	4.968	-400.076
Long	271.705	101.931		101.924	101.924	Ohm-m	1.888	-90.571
IEE	92.849	6387.565	counts	0.102	6.991	A		
VSN	122.623	7235.648	counts	2.339	138.011	V		
VLN	70.858	1828.759	counts	1.352	34.881	V		

After Survey Verification compared to Before Survey Calibration

	Zero			Cal		
	Before	After		Before	After	
Short	9.828	183.906	Ohm-m	100.799	100.821	Ohm-m
Long	0.000	422.542	Ohm-m	101.776	101.924	Ohm-m

Gamma Ray Calibration Report

Serial Number: D1
 Tool Model: ELOG
 Performed: Mon Sep 29 13:55:50 2008

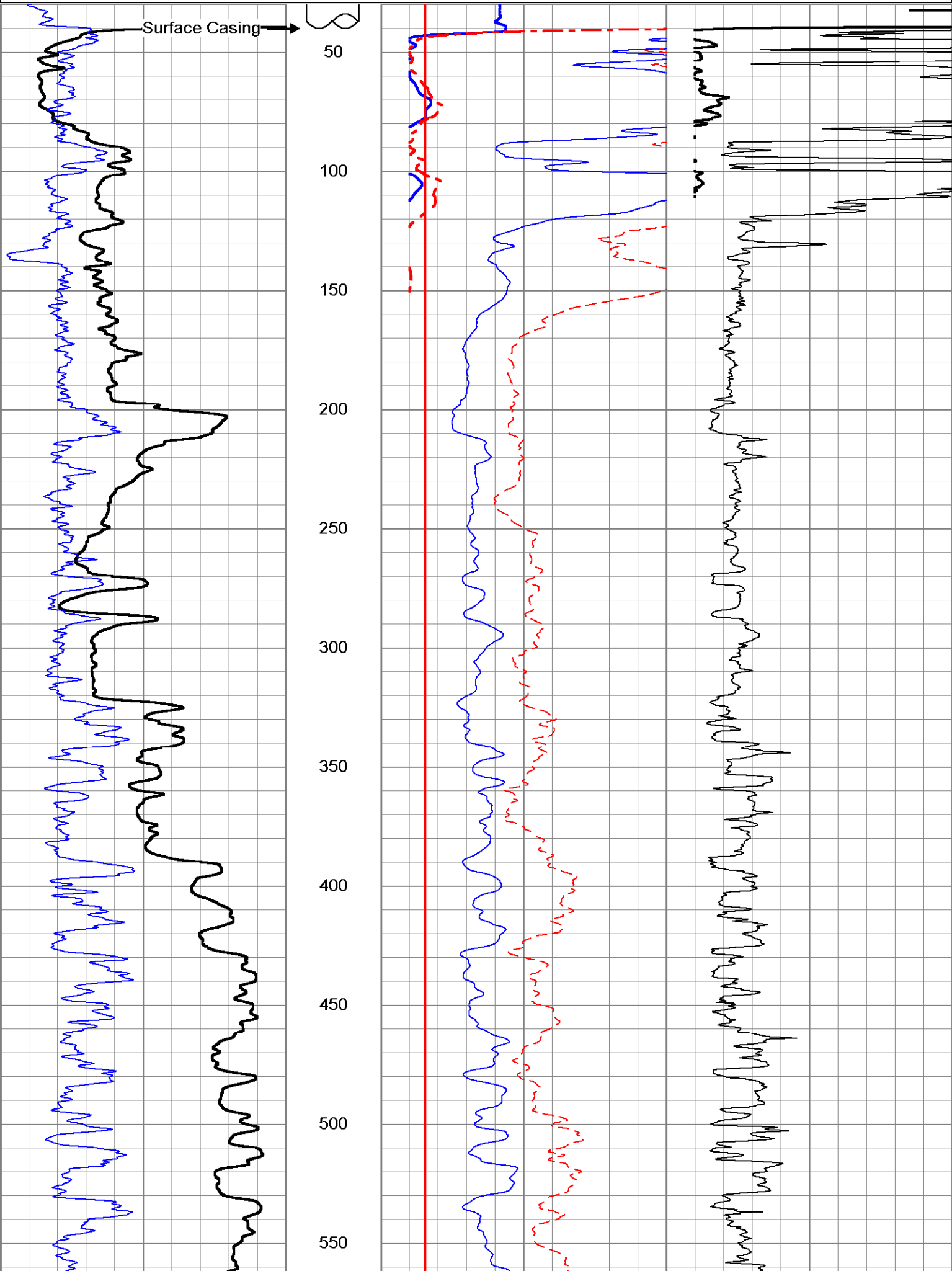
Calibrator Value: 162 GAPI

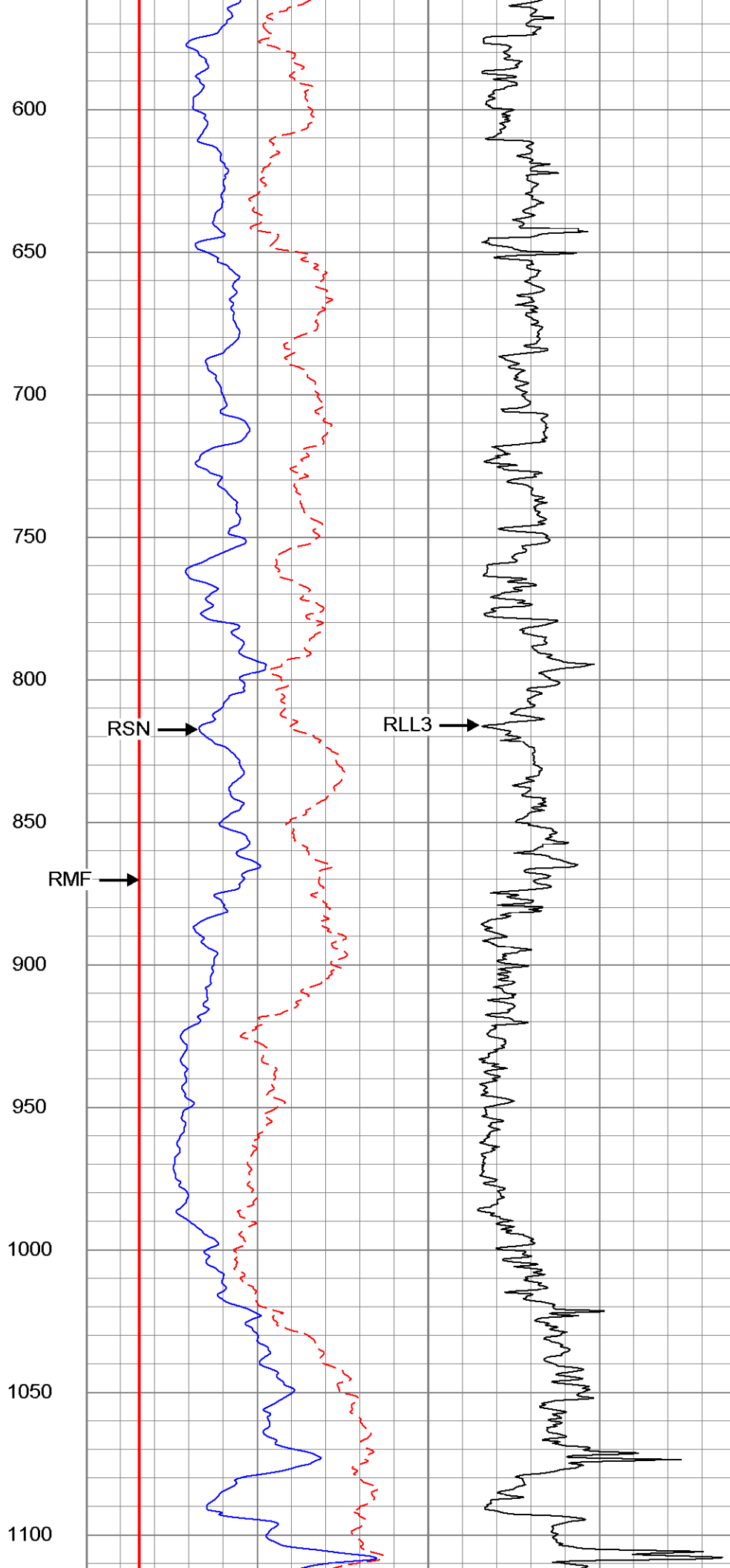
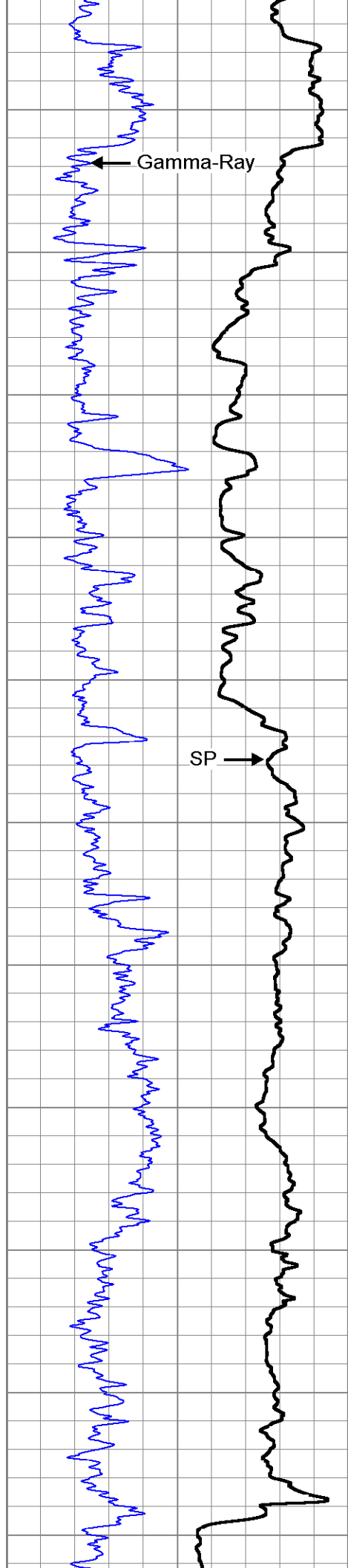
Background Reading: 151.12 cps
 Calibrator Reading: 599.794 cps

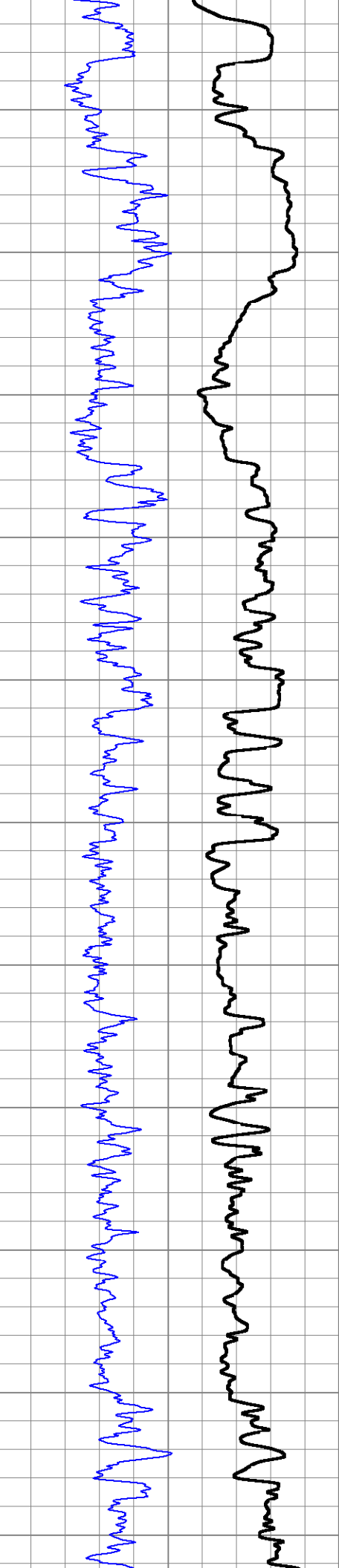
Sensitivity: 0.361064 GAPI/cps

Database File: 15004.db
 Dataset Pathname: wdc/well/run1/elog
 Presentation Format: ELOG
 Dataset Creation: Fri Dec 04 17:30:24 2009 by Log Warrior Version 6.6
 Charted by: Depth in Feet scaled 1:600

-80	SP (mV)	20	0	RSN (Ohm-m)	25	0	LGRD2 (Ohm-m)	25
20	Gamma-Ray (GAPI)	200	0	RLN (Ohm-m)	25	25	RLL3 x 10 (Ohm-m)	250
			0	RMF (Ohm-m)	25			
			25	RSN x 10 (Ohm-m)	250			







1150

1200

1250

1300

1350

1400

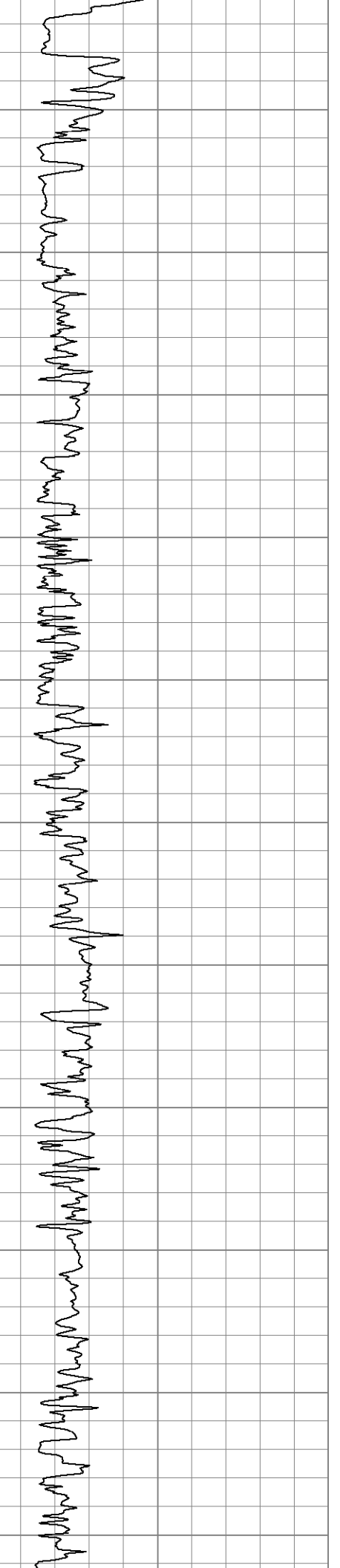
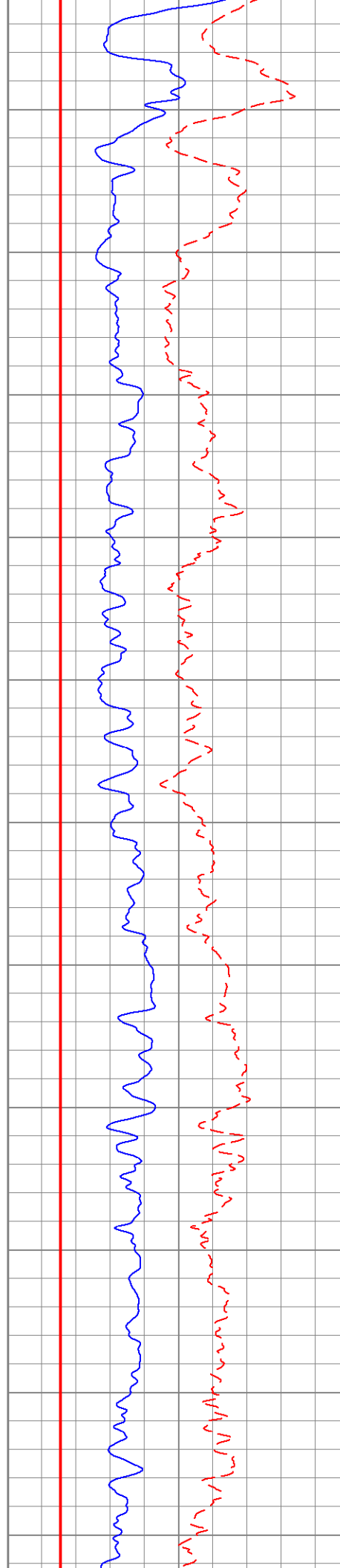
1450

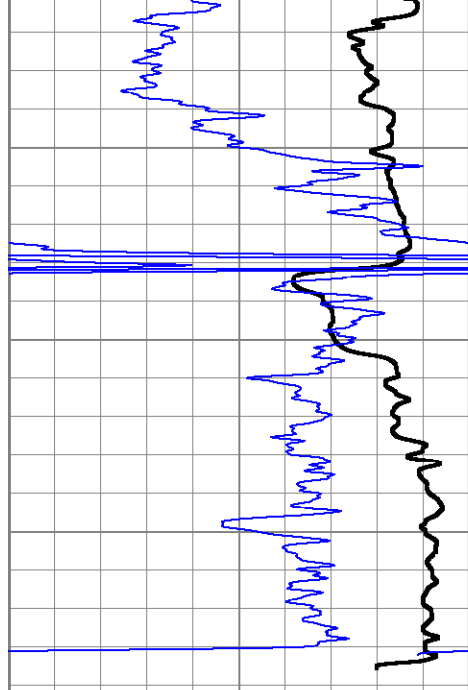
1500

1550

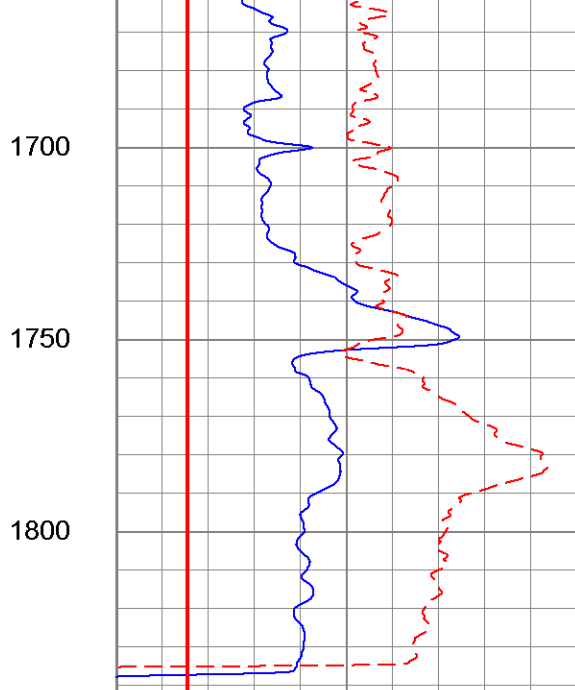
1600

1650

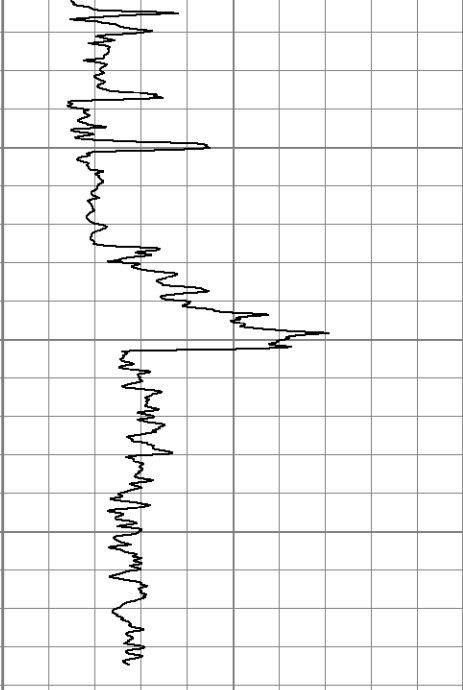




-80	SP (mV)	20
20	Gamma-Ray (GAPI)	200



0	RSN (Ohm-m)	25
0	RLN (Ohm-m)	25
0	RMF (Ohm-m)	25
25	RSN x 10 (Ohm-m)	250
25	RLN x 10 (Ohm-m)	250



0	LGRD2 (Ohm-m)	25
25	RLL3 x 10 (Ohm-m)	250