



<b>DOCKET</b>	
<b>09-AFC-6</b>	
DATE	JUN 23 2010
RECD.	JUN 25 2010

June 23, 2010

Allison Shaffer  
 Project Manager  
 Palm Springs South Coast Field Office  
 1201 Bird Center Drive  
 Palm Springs, CA 92262

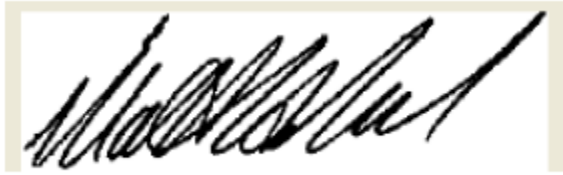
**Subject:           Comments on Draft EIS/SA for the Solar Millennium Blythe Solar Power Plant  
 (the “Solar Millennium Project”)**

Dear Ms. Shaffer:

In order to minimize the environmental impacts associated with solar project development, NextEra Energy Resources, LLC (“NextEra”) and SolarReserve, LLC (“SolarReserve”) request that the Bureau of Land Management (“BLM”) and the California Energy Commission (“CEC”), give consideration to establishing a North-South utility corridor through the Solar Millennium Project site (the “Utility Corridor”) to accommodate an additional double circuit 230kV line which would run in parallel to the Solar Millennium’s planned double circuit 230kV gen-tie to the SCE Colorado River Substation (reference attached conceptual drawings, Exhibits 1 & 2).

This Utility Corridor and additional double circuit 230kV line would allow projects to the north of the Solar Millennium Project to access Colorado River Substation with less environmental and land use impacts than alternatives which would involve creating additional, separate transmission line corridors around Solar Millennium’s Project either to the west or to the east. NextEra would also provide a similar transmission right-of-way access along the eastern boundary of McCoy as shown in Exhibit 1, attached. By establishing the Utility Corridor, linear facilities from projects to the north would be combined and minimized, consistent with BLM and CEC best practices guidance for desert renewable energy projects.

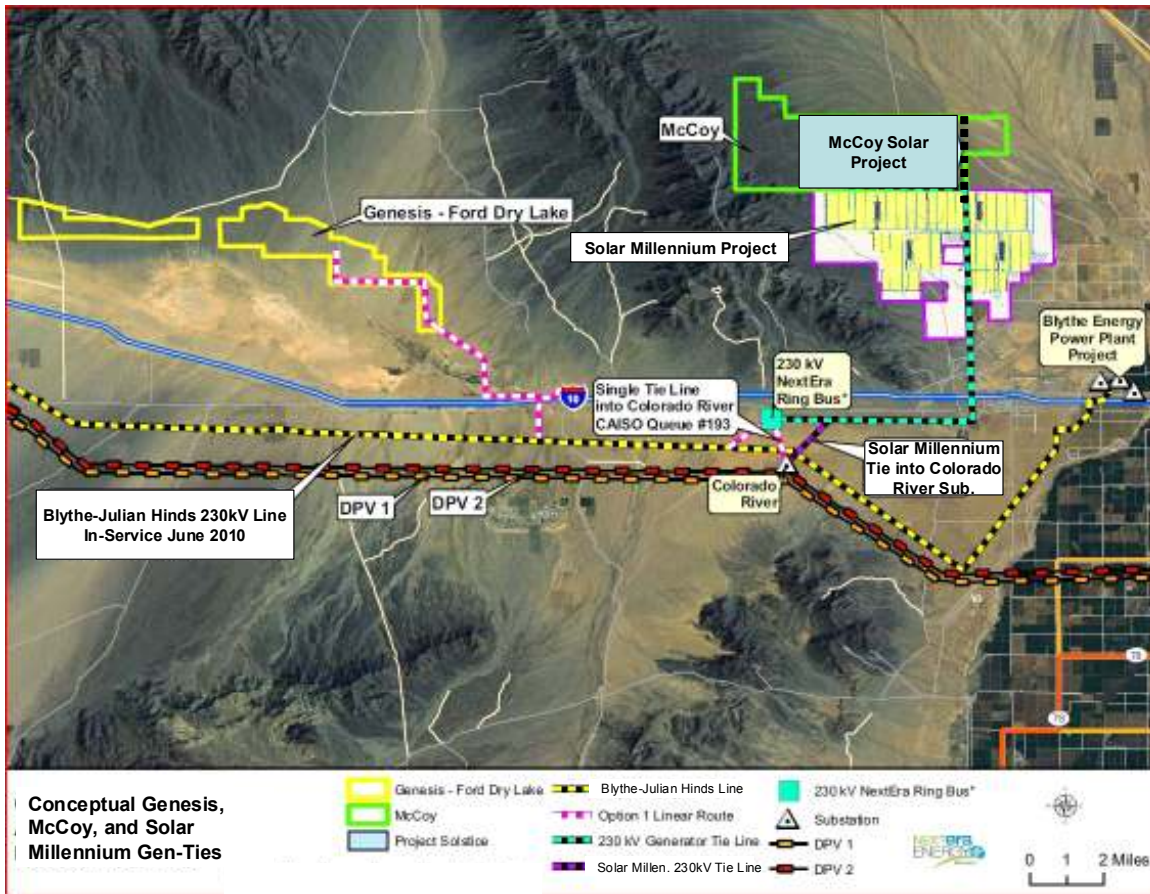
Sincerely,



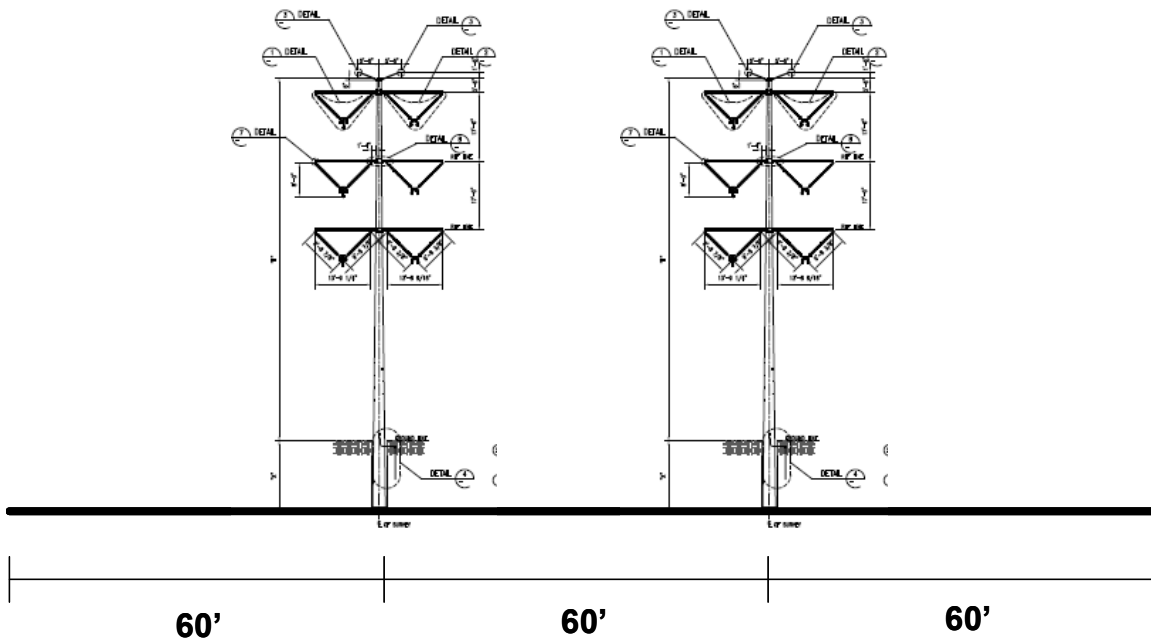
Matt Handel  
Vice President Solar Development  
NextEra Energy Resources



Tom Georgis  
Vice President Development  
SolarReserve



**Exhibit 1: Conceptual Gen-tie Diagram**



**Exhibit 2: Conceptual Transmission ROW Configuration**