

--WELCOME--
CALIFORNIA ENERGY COMMISSION
U.S. BUREAU OF LAND MANAGEMENT
INFORMATIONAL HEARING/SCOPING MEETING
BLYTHE, PALEN, & RICE SOLAR POWER PROJECTS



DOCKET
09-AFC-6

DATE JAN 25 2010

RECD. FEB 02 2010



CEC HEADQUARTERS BUILDING
1516 9TH STREET, SACRAMENTO, CA 95814



NOTICE OF TODAY'S SITE VISIT AND HEARING PROVIDED TO:

- Parties,
- Adjoining landowners,
- Interested governmental agencies,
AND
- Published on the California Energy Commission Website
- U.S. Mail
- Public Advisor's outreach efforts



THE COMMITTEE

- There are five members of the Energy Commission, two of whom have been appointed as the Committee that will conduct the certification process.
- The Committee will eventually issue a Presiding Member's Proposed Decision (PMPD) containing recommendations on the proposed project to the full Energy Commission.



EX PARTE RULE

- All decisions made in this case will be made solely on the basis of the public record.
- No off-the-record contacts concerning substantive matters are permitted to take place between the parties and the Commissioners, their advisors, this Committee, or the Hearing Officer.



EX PARTE RULE

- Contacts between the parties and the members of the Committee regarding a substantive matter must occur in a public forum or in a writing distributed to all the parties and made available to the public.
- Purpose: to provide full disclosure to all participants of any information that may be used as a basis for the future Decision on this project.



TODAY'S AGENDA

5:00

General Information

- Public Advisor's Office Presentation
- California Energy Commission Staff Presentation

6:00

Rice Solar Energy Project

- Rice Solar Energy LLC Presentation
- Issues Identification and Scheduling Discussion
- Public Question and Comment

7:00 Blythe & Palen Solar Power Projects

- Solar Millennium LLC Presentation
- Issues Identification and Scheduling Discussion
- Public Question and Comment



Blythe Solar Power Project (09-AFC-6)
Palen Solar Power Project (09-AFC-7)
Rice Solar Energy Project (09-AFC-10)

Informational Hearing and Site Visit

James Davis
Public Liaison

January 25, 2010



CALIFORNIA
ENERGY COMMISSION



Public Participation

Outreach

Public participation is an integral part of the siting process

Public involvement improves the process and the outcome

Public outreach is a concerted effort at the Energy Commission

- > Executive Director
- > Siting Division
- > Hearing Office
- > Media Office
- > Public Adviser's Office

What's a Public Adviser?

At the Commission

Help the public understand the process

Make recommendations for the best way to be involved

Assist in successful participation in proceedings

Brochures are available for more information

Outreach--Public Adviser

Notice of Informational Hearing and Site Visit in English & Spanish:

- > City and County officials, including:
Blythe, Riverside, Quartzsite and San Bernardino
- > Broad categories:
Interested parties that have contacted our office; city and county civic leaders; local non-profit groups (community, environmental, ethnic organizations); local Native American Tribes and registered members; public and private schools; places of worship; law enforcement; emergency services; community organizations and libraries

Media Outreach:

- > Paid local newspaper advertisement
Palo Verde Valley Times
- > Website public service announcements requested
Chamber of Commerce: Blythe, Riverside and San Bernardino
City of Blythe
- > Local TV and radio contacted in English and Spanish
KVER TV Channel 4 and KDIF La Precisosa
KPKR 97.3 FM, River Rat Radio, KJMB-FM 100.3, KLYY Radio, Jose 97.5

Outreach--Other Notices

Notice of CEC receipt of an AFC (by "Siting" Division):

U.S. Postal Service mailing

- > Residents: within 1,000 ft. of project site & 500 ft. of project linears
- > Libraries: with copies of the AFC
- > Agencies (local, state & federal): with CDs of the AFC

Notice announcing this site visit/info hearing (by Hearing Office):

U.S. Postal Service mailing

- > Project Mailing List
Residents, libraries, agencies
- > Proof of Service List
Committee, applicant, staff, interested agencies, intervenors

Notice by List Server

Electronic distribution by email to those who signed up on the electronic list

Outreach--Other

Executive Director Correspondence:

Elected Officials

Press Release & Media Advisories (by CEC Media & Communications Office):

Barstow Desert Dispatch, Barstow Log, Record-Gazette Banning, Riverside Press Enterprise, LA Times Riverside Bureau, Palo Verde Valley Times, Quartzsite Times, Valley Chronicle (Hemet), Town Crier (Idyllwild), Beacon (March AFB), Perris Progress & City News, Riverside Press Enterprise, Riverside County Record, Riverside Biz Journal, Palm Springs Desert Sun, Black Voice News, Riverside County Record, KDFX Fox TV, KESQ ABC TV, KMIR NBC TV, KUNA Telemundo, KLOB FM, KGAM AM, KDIF-TV, KPRO-AM, KJMB-FM and KHPY

At the Commission

SOURCES

- > Energy Commission Website
www.energy.ca.gov/sitingcases/solar
 - ✓ *Notices and Announcements*
 - ✓ *Documents and Reports*
 - ✓ *Docket Log*

- > Energy Commission Library
1516 Ninth Street, Sacramento, CA

- > Dockets Email
docket@energy.state.ca.us
 - ✓ *Public Records Act requests for items not electronically available on website*

TOOLS

- > List Server (email notification)
www.energy.ca.gov/listservers
 - ✓ Notification of new postings on project website

- > U.S. Mailing List
Project specific notices

- > Public Adviser's Office
Sign-Up Sheet
 - ✓ The Public Adviser's Office can make sure that you get on the above list of your choice
 - ✓ Call for additional assistance

(Solar Millennium) Blythe Solar Power Project



Skip to: [Content](#) | [Footer](#) | [Accessibility](#)

- [Home](#)
- [Jobs](#)
- [Reports & News](#)
- [Climate Change](#)
- [Efficiency](#)
- [Electricity & Nat Gas](#)
- [Power Plants](#)
- [Renewables](#)
- [R & D](#)
- [Transmission](#)
- [Transportation](#)
- [Funding](#)

[Siting Cases Main Page](#)

Project Proceeding

- [Proceeding's Main Page](#)
- [Notices, Orders, & Announcements](#)
- [Documents and Reports](#)
- [Docket Log 09-AFC-06](#)
- [Proof of Service List](#)

Public Participation

- [Public Adviser's Office](#)
- [Power Plant Siting Proceedings FAQs](#)
- [Public Adviser's Presentations and Printed Materials](#)
- [Commission Siting Division](#)
- [Title 20 Calif. Code of Regulations](#)
- [Acronyms and Definitions Used in Siting Cases](#)
- [Energy Commission News Releases](#)

(Solar Millennium) Blythe Solar Power Project

Docket Number: **09-AFC-8**
(Application For Certification)



< >						
S	M	T	W	T	F	S
					01	02
03	04	05	06	07	08	09
10	11	12	13	14	15	16
17	18	19	20	21	22	23
24	25	26	27	28	29	30
31						

Calendar

January 22, 2010

[Notice of Meeting of the Renewable Energy Policy Group](#)

January 25, 2010

[Blythe Solar Project Site Visit and Public Informational Hearing/Scoping Meeting](#)

List Server

To sign up for this project's e-mail ListServer, please enter the following information completely:

You will receive an e-mail to confirm your subscription.

Committee Overseeing This Case:

Karen Douglas, Commissioner
Presiding Member

Jeffrey D. Byron, Commissioner
Associate Member

Hearing Officer: Raoul Renaud

Key Dates

- 8/24/2009 - Application for Certification (AFC) filed

GENERAL DESCRIPTION OF PROJECT

In Your Community

Where the Public can Read the Application for Certification (AFC)

Library

- > Parker Public Library
- > Palo Verde Valley District Library
- > Lake Tamarisk Library
- > Cathedral City Branch Library
- > Riverside Main Library
- > Coachella Branch Library

Electronic Access to AFC

- > www.energy.ca.gov/sitingcases/solar

Two Levels of Public Participation

Informal Participation

Comments

- > Considered by the Commissioners
- > Part of the record
- > Not evidence

Making your voice heard is easy

- > Verbal Comments at Public Meetings: via Blue Cards
- > Written Comments or Statements to the Commission Dockets Unit

Two Levels of Public Participation

Formal Participation (Intervenor)

Who can Become an Intervenor

- > Anyone may file a Petition to Intervene in a proceeding
- > You do not have to be or have an attorney to intervene
- > The petition is considered by the assigned committee
- > If approved, you become a party to this proceeding

How to Formally Participate

- > Contact the Public Adviser's Office or go to our website
- > File Petition to Intervene

NOTE: It is important to intervene early in a case, otherwise there is the possibility of missing the time frame to intervene or missing the time frame in which to request information from staff, the applicant and other parties .

Two Levels of Public Participation

Benefits & Responsibilities to Intervening

Intervenors have the same rights & responsibilities as other parties

- > Receive
 - All filings in a case, including AFC
 - Notices of hearings and workshops through Proof of Service
- > Fully participate in the process of obtaining information
- > File documents and serve them on all parties
 - Motions
 - Petitions
 - Objections
 - Briefs
- > Present evidence and witnesses
- > Cross-examine witnesses provided by other parties

How to Participate

Things to Keep in Mind

Stay informed

- > Sign-Up to Receive Notice of All Upcoming Events

Note: Per CA Govt. Code 11124, you are not required to register your name or provide any information as a condition to attend or participate in this proceeding

Submit written comments

Attend Publicly Noticed Project Events

- > Public Encouraged to Comment on Noticed Agenda Topics
- > Non-English Speaking Welcome
- > Special Accommodations for Persons With Disabilities

Lourdes Quiroz (916) 654-5146, lquiroz@energy.state.ca.us



Contact

James Davis, Public Liaison

(916) 654-4701

(800) 822-6228 Toll Free Voicemail

(916) 654-4493 FAX

1516 Ninth St, MS-12

Sacramento CA 95814-2950

publicadviser@energy.state.ca.us

www.energy.ca.gov/public_adviser

BUREAU OF LAND MANAGEMENT, WESTERN AREA POWER ADMINISTRATION and CALIFORNIA ENERGY COMMISSION Common Process Activities for the 3 Projects

Chevron Energy Solutions/Solar Millennium Palen and Blythe Solar Power Plants

Applications for Certification: 09-AFC-7 (Palen) & 09-AFC-6 (Blythe)

BLM Rights-of-Way Applications: CACA 048810 (Palen) & CACA 048811 (Blythe)

- Allison Shaffer, BLM Project Manager
- Alan Solomon, CEC Project Manager



SolarReserve

Rice Solar Energy Project

Application for Certification: 09-AFC-10

BLM Right of Way Application: CACA51022

Interconnection Request and DOE/EIS-0439

Liana Reilly, Western Project Manager

Allison Shaffer, BLM Project Manager

John Kessler, CEC Project Manager



BLM's Role

■ BLM Permitting Authority

- ❖ Administration of public lands under Federal Land Policy and Management Act of 1976 (FLPMA)
- ❖ Review of the Land Use Plan and processing of an Environmental Impact Statement-Level Land Use Plan Amendment (PA/EIS)
- ❖ California Desert Conservation Plan (1980, as Amended)
- ❖ Issuance of right-of-way (ROW) grants for use of federal land
- ❖ Lead federal agency for National Environmental Policy Act (NEPA), National Historic Preservation Act, and other federal law compliance (Co-lead with Western for Rice)



Western Area Power Administration's Role

- **Western's Role:**
 - ❖ Consider Interconnection Request for tie-in to federal transmission system
 - ❖ Lead federal agency for National Environmental Policy Act (NEPA), National Historic Preservation Act, and other federal law compliance (Co-lead with BLM for Rice)



Energy Commission's Role

- **Energy Commission permitting authority**
 - ❖ Thermal power plants 50 megawatts or greater
 - ❖ Related facilities
 - transmission lines
 - substations
 - water supply systems
 - natural gas pipelines
 - waste disposal facilities
 - access roads
 - ❖ Lead state agency for California Environmental Quality Act (CEQA)



Local, State and Federal Coordination

- ❖ BLM and Energy Commission Staff work closely with local, state and other federal agencies, for example:
 - Local: City or County
 - Regional: Mojave Desert/South Coast Air Quality Management District
 - State: Department of Fish and Game, Regional Water Quality Control Board, Office of Historic Preservation, Native American Heritage Commission
 - Federal: Environmental Protection Agency, Fish and Wildlife Service, and National Park Service



Overview of Licensing Process

1. Data Adequacy
 - Minimum requirements to accept application
2. Staff Discovery and Analyses
 - Data requests
 - Issues Identification
 - Public Workshops
 - Staff Assessment and Staff Assessment Errata
3. Committee Evidentiary Hearing and Decision
 - Evidentiary Hearings on FSA and other information
 - Presiding Member's Proposed Decision (PMPD)
 - PMPD hearing and Commission decision



Discovery and Analysis Process

- ❖ Determine if proposal complies with Laws, Ordinances, Regulations, Standards (LORS)
- ❖ Conduct engineering and environmental analysis
 - ❖ identify issues
 - ❖ evaluate alternatives
 - ❖ identify mitigation measures
 - ❖ recommend conditions of certification
- ❖ Facilitate public and agency participation
- ❖ Staff products: Staff Assessment and Staff Assessment Errata
- ❖ Make recommendations to the Committee



Evidentiary Hearing & Decision Process

- ❖ Committee conducts hearings on all information
 - Issues Presiding Member's Proposed Decision (PMPD)
 - PMPD contains findings relating to:
 - Environmental impacts, public health, engineering
 - Project's compliance with LORS
 - Recommends conditions of certification
 - Recommends whether or not to approve the project
- ❖ Full Commission makes decision
- ❖ Energy Commission monitors compliance with all conditions of certification, for the life of the project and closure



Department of the Interior

Secretarial Orders

Secretarial Order 3283 – Enhancing Renewable Energy Development on Public Lands (January 16, 2009)

- **Purpose.** This Order facilitates the Department's efforts to achieve the goal Congress established in Section 211 of the Energy Policy Act of 2005 to approve non-hydropower renewable energy projects on the public lands with a generation capacity of at least 10,000 megawatts of electricity by 2015.
- **Policy.** The Department supports the permitting of environmentally responsible wind, solar, biomass, and geothermal operations and required electrical transmission facilities on the public lands.

Secretarial Order 3285 – Renewable Energy Development by Department of the Interior (March 11, 2009)

- **Purpose:** This Order establishes the development of renewable energy as a priority for DOI and establishes a Departmental Task Force for Energy and Climate Change.
- **Policy:** Encourage the production, development, and delivery of renewable energy is one of DOI'S highest priorities.





BLM Solar Energy Development Policy



- ❖ WO IM No. 2007-097 (April 4, 2007)
- ❖ Policy: facilitate environmentally responsible commercial development of solar energy projects on public lands.
- ❖ ROW applications for solar energy projects are a high priority and will be processed in a timely manner.
- ❖ If approved, authorize under Title V of FLPMA.
- ❖ Rent established by appraisal.
- ❖ Information on solar energy technology is available at: <http://www1.eere.energy.gov/solar/> or <http://www.nrel.gov/solar/>



■ Ref. Handout WO- IM No. 2007- 097



Summary of BLM ROW Processing and Administration

- BLM:
 - Regulations: 43 CFR 2800
 - Right-of-Way Toolkit Information:
 - ❖ General ROW
http://www.blm.gov/wo/st/en/prog/energy/cost_recovery_regulations.html
 - ❖ Solar ROW
http://www.blm.gov/wo/st/en/prog/energy/solar_energy.html

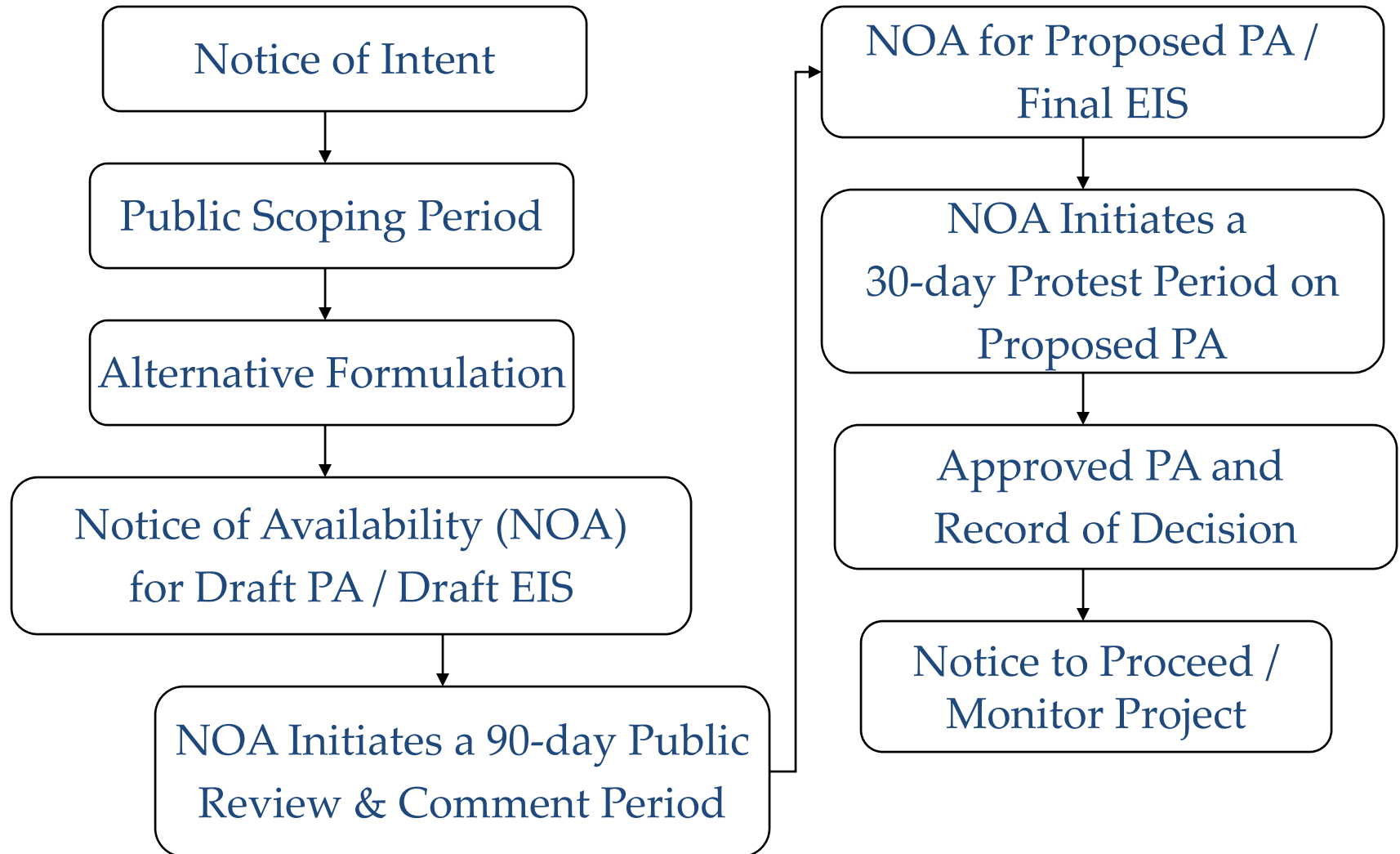


BLM Authorized Officer's Role

- ❖ Initial Response to Proposal
- ❖ Pre-application Screening
- ❖ Accept Application or Reject Proposal
- ❖ Process Application / Land Use Plan Amendment (PA)
 - ❖ - Conduct Formal Scoping
(November 23 – December 23, 2009)
 - ❖ - Prepare BLM Planning / NEPA Document (PA/EIS)
- ❖ Approve LUP Amendment / Decision on Application
- ❖ Authorize the Use and Establish Monitoring
- ❖ Administer through Termination



BLM LUP Amendment / NEPA Process (PA / EIS)



BLM Contacts

Blythe and Palen Projects

- ❖ Allison Shaffer, Project Manager
Phone: (760) 833-7100
e-mail: allison_shaffer@blm.gov
- ❖ BLM Web Page:
<http://www.blm.gov/ca/st/en/fo/palmsprings.html>



Western Contacts and Comment Web Site Rice Solar Energy Project

- ❖ Liana Reilly, Project Manager
Phone: (720) 962-7253
e-mail: reilly@wapa.gov
- ❖ BLM Web Page:
<http://www.blm.gov/ca/st/en/fo/palmsprings.html>
- ❖ Scoping comments to:
SolarReserve - Rice Solar Scoping Comments
c/o Ms. Liana Reilly, Project Manager
Western Area Power Administration
P.O. Box 281213
Lakewood, CO 80228-8213

Or email comments to:
RiceSolar@wapa.gov



Energy Commission

Blythe & Palen Contacts and Web Site

❖ Committee Assigned

- Chairman Karen Douglas
- Commissioner Jeffrey Byron

❖ California Energy Commission Staff

- Raoul Renaud, Commission's Hearing Officer
 - (916) 651-2020, e-mail: rrenaud@energy.state.ca.us
- Alan Solomon, Project Manager
 - (916) 653-8236 e-mail: asolomon@energy.state.ca.us
 - Web page:

www.energy.ca.gov/sitingcases/solar_millennium_palen/index.html
and

www.energy.ca.gov/sitingcases/solar_millennium_blythe/index.html

– Public Adviser's Office

- (916) 654-4489 or (800) 822-6228
- e-mail: PublicAdviser@energy.state.ca.us



Energy Commission

Rice Contacts and Web Site

- ❖ Committee Assigned
 - Commissioner Robert Weisenmiller – Presiding Member
 - Chairman Karen Douglas – Associate Member

- ❖ California Energy Commission Staff
 - Kourtney Vaccaro, Commission's Hearing Officer
 - (916) 654-4328, e-mail: KVaccaro@energy.state.ca.us

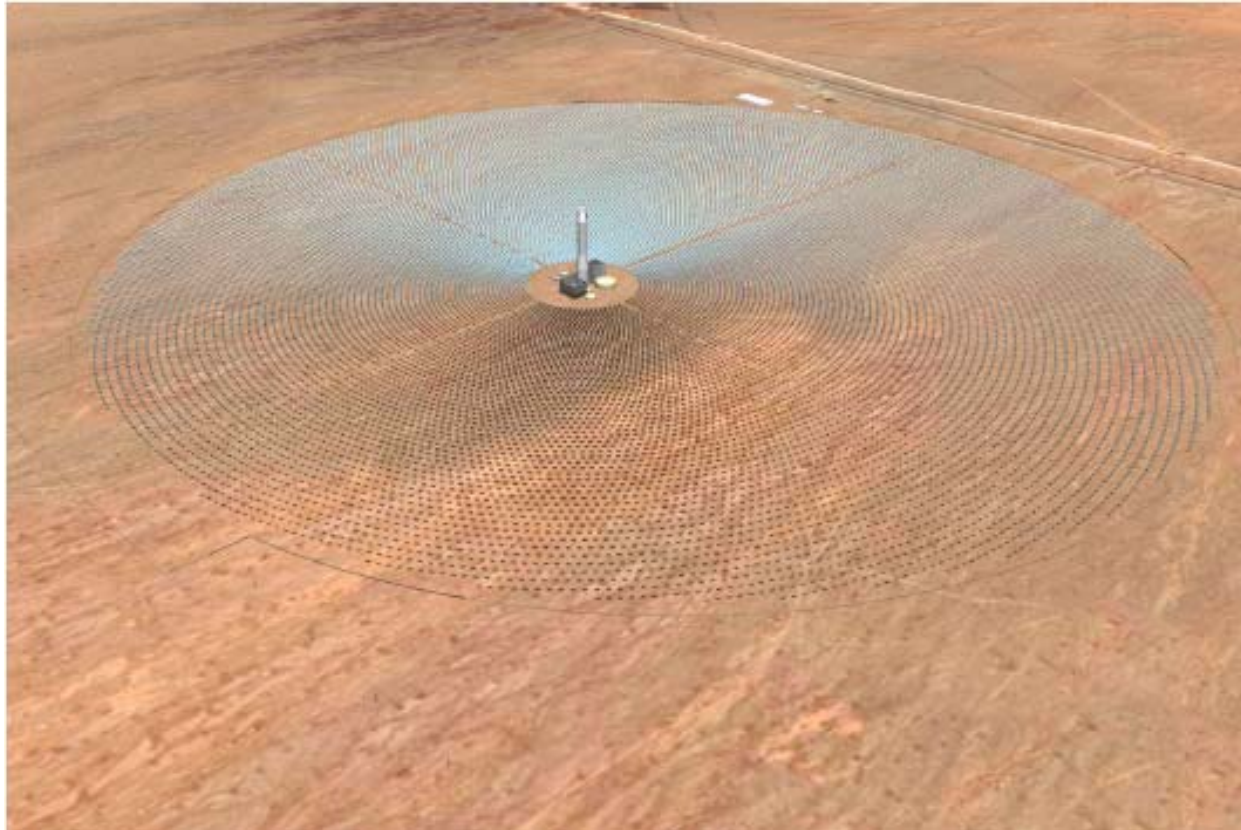
 - John Kessler, Project Manager
 - (916) 654-4679 e-mail: JKessler@energy.state.ca.us
 - Web page: www.energy.ca.gov/sitingcases/ricesolar/index.html

 - Public Adviser's Office
 - (916) 654-4489 or (800) 822-6228
 - e-mail: PublicAdviser@energy.state.ca.us



Rice Solar Energy Project

Informational Hearing Begins at 6:00 PM



STAFF ISSUES IDENTIFICATION REPORT

■ Purpose

- ❖ Inform Participants of Potential Issues
- ❖ Early Focus
- ❖ Not Limiting

■ Criteria

- ❖ Significant impacts may result from the project which may be difficult to mitigate
- ❖ The project as proposed may not comply with applicable laws, ordinances, regulations or standards (LORS)
- ❖ Conflicts may arise between the parties about the appropriate findings or conditions



Rice - Potential Issue Areas

- ❖ Biological Resources
- ❖ Soil and Water Resources
- ❖ Transmission System Engineering
- ❖ Visual Resources



Rice – Potential Biological Resource Issues

- ❖ Federal and State Protected Species
- ❖ Multi-agency Mitigation Development for Potential Significant Impacts
- ❖ Need for Additional Surveys
 - Spring Surveys in Desert Tortoise Translocation area
 - Summer Surveys for Special-Status Plants
- ❖ Potential Design Optimization
 - ❖ Avoid/minimize Disturbance to Ephemeral Drainages
 - ❖ Avoid/Mitigate Effects to Birds from the Evaporation Ponds
- ❖ Preparation of Numerous Permit Applications and Draft Protection Plans



Rice – Potential Soil and Water Resource Issues

- ❖ Relocation of natural drainages and disruption of natural surface flows
- ❖ Potential for scour and effects on heliostats



Rice – Potential Transmission System Engineering Issues

- ❖ Complete System Impact Study (SIS) to determine Transmission effects
- ❖ Timely SIS completion to allow environmental and engineering analysis of potential downstream transmission upgrades without causing delays



Rice – Potential Visual Resource Issues

- ❖ New intrusions on the landscape from heliostats and solar power tower
- ❖ Traditional mitigation for screening and softening visual effects are not effective for the 653-foot high power tower that will glow with sun-like intensity



Rice - Proposed Schedule – Part I

ACTIVITY	DATE
Applicant files Application for Certification (AFC)	10/21/09
Commission's determination that AFC is complete	12/2/09
Staff files Issues Identification Report & Proposed Schedule	1/20/10
Informational Hearing and Site Visit	1/25/10
Staff/BLM/Western file Data Requests	1/28/10
NOI Published in the Federal Register (by Western)	TBD
Staff coordinates with agencies to obtain comments and permit requirements	1/29 – 2/27/10
Public Scoping Meeting (No earlier than 15 days after NOI publication)	TBD
Scoping Report Prepared/Published (30 Day period for public review) (30 days from NOI publication)	TBD
Applicant provides Data Responses	3/1/10
Data Response and Issue Resolution workshop	TBD (mid-March)
Status Report #1 (and thereafter every 6 weeks)	3/10/10
Local, state and federal agency draft determinations AQMD files PDOC	4/2/10
Administrative Staff Assessment/Draft Environmental Impact Statement (SA/DEIS)	4/15/10
Western/BLM internal review of Notice of Availability of SA/DEIS for Federal Register;	5/14/10
SA/DEIS published & 90-day comment period begins; BLM submits Biological Assessment (BA) to USFWS	5/28/10



Rice - Proposed Schedule – Part II

ACTIVITY	DATE
SA/DEIS published & 90-day comment period begins; BLM submits Biological Assessment (BA) to USFWS	5/28/10
Staff Assessment Workshop	6/17/10
Local, state and federal agency final determinations; AQMD files FDOC	6/18/10
BA determined adequate by FWS	6/26/10
Prehearing Conference*	TBD – July?
Evidentiary hearings*	TBD – July/Aug?
Close DEIS comment period	8/26/10
Prepare Response to DEIS comments; and Admin. Draft of Staff Assessment Errata/Final EIS	10/7/10
USFWS issues Biological Opinion	10/15/10
Staff Assessment Errata/FEIS distributed; NOA of SAE/FEIS in Federal Register (must be on a Friday)	11/5/10
Presiding Members Proposed Decision (PMPD)*	TBD – Nov?
BLM Plan Amendment Protest Period ends; Expedited Governor's review period ends; see***	12/6/10
Committee Hearing on PMPD*	TBD – Dec?
Addendum/Revised PMPD*	TBD – Jan. 2011?
BLM Record of Decision/Right of Way issued; Energy Commission Decision*	TBD – Feb. 2011?



Factors That Can Affect Schedule

- Meeting this schedule will depend on:
 - ❖ Applicant's timely response to the joint agency staff's data requests
 - ❖ Determinations by other local, state, and federal agencies
 - ❖ Timely preparation of required documents
 - ❖ Number and complexity of comments received during the NEPA comment or protest periods
 - ❖ Other factors not yet known



Blythe & Palen Solar Energy Project

Informational Hearing Begins at 7:00 PM



Blythe & Palen Potential Issue Areas

- ❖ Biological Resources
- ❖ Cultural Resources
- ❖ Soil and Water Resources
- ❖ Transmission System Engineering
- ❖ Visual Resources
- ❖ Multiple Resource Use Limitations
- ❖ Cumulative Effects and Alternatives



Blythe & Palen

Potential Biological Resource Issues

- ❖ Federal and State Protected Species
- ❖ Multi-agency Mitigation Development
- ❖ Implementation of Mitigation for Potential Significant Impacts
- ❖ Cumulative Impacts



Blythe & Palen

Potential Cultural Resource Issues

- ❖ High Frequency of Desert Cultural Resources (number and density)
- ❖ Potential for Unanticipated Discoveries
- ❖ Mitigation of Potential Significant Impacts
- ❖ Cumulative Impacts



Soil and Water Resources

Blythe & Palen Potential Issues

- ❖ Vegetation removal and grading surface to near level condition
- ❖ Relocation of natural drainages and disruption of natural surface flows
- ❖ Water use and effects on ground water basin levels
- ❖ Cumulative Impacts



Blythe & Palen

Potential Transmission System Engineering Issues

- ❖ Complete California Independent System Operator (California ISO) Phase I and/or Phase II Interconnection Study is not available for staff to review
- ❖ California Environmental Quality Act (CEQA) analysis of potential downstream transmission upgrades could cause a delay in the licensing process for the Blythe Solar project



Blythe & Palen

Potential Visual Resource Issues

- ❖ New intrusions on the landscape from solar troughs and mirrors
- ❖ Development of Visual Resource Management (VRM) classification



Blythe & Palen

Potential Multiple Resource Use Limitation Issues

- ❖ Exclusive use of public land could eliminate other BLM authorized land uses
- ❖ Elimination of traditional access/Off-Highway Vehicle (OHV) routes
- ❖ Visual resource impacts from key observation points
- ❖ Cumulative Impacts



Blythe and Palen

Potential Cumulative Effects and Alternatives Issues

- ❖ Cumulative effects of the environmental impacts of all proposed projects in the inland desert region are required under NEPA and CEQA requirements
- ❖ Alternatives to a proposed project including no action



BLYTHE PROPOSED SCHEDULE

Milestone/Task	Original Dates	Revised Dates
Commission's Determination of Data Adequate	November 18	November 18
Solar Millennium files Streambed Alteration Agreement	November 25	November 25
File Data Requests	December 7	December 7
Data Request Workshop	December 9	December 9
BLM Scoping Meeting	December 11	December 11
File Issue ID	December 17	December 17
Solar Millennium files Data Responses	January 6	January 6
Data Response Workshop	January 7	January 7
Data Response Workshop, continued		January 14
Info Hearing/Site Visit	January 25	January 25
Circulate SA/DEIS and Receive Comments from BLM, FWS, and CDFG	January 22 – Feb 5	February 5 – 26
Format SA/DEIS	February 8 - 17	March 1 – 10
Publish SA/DEIS	February 18	March 11
Note – The Biological Assessment and Biological Opinion dates will be determined by when the applicant provides the complete Spring Survey results for the Proposed Transmission Line		
Local, state and federal agency comments due	March 18	March 18
Publish SAE/FEIS	July 30	July 30
Prehearing Conference*	TBD	TBD
Evidentiary hearings*	TBD	TBD
Presiding Members Proposed Decision (PMPD)*	TBD	TBD
Committee Hearing on PMPD*	TBD	TBD
Addendum/Revised PMPD*	TBD	TBD
BLM Record of Decision/Right of Way (ROD/ROW) issued; Energy Commission Decision*	TBD	TBD

*The assigned Committee will determine this part of the schedule.



PALEN PROPOSED SCHEDULE

Milestone/Task	Original Dates	Revised Dates
Commission's Determination of Data Adequate	November 18	November 18
Solar Millennium files Streambed Alteration Agreement	November 25	November 25
File Data Requests	December 7	December 7
Data Request Workshop	December 9	December 9
BLM Scoping Meeting	December 11	December 11
File Issue ID	December 17	December 17
Solar Millennium files Data Responses	January 6	January 6
Data Response Workshop	January 7	January 7
Data Response Workshop, continued		January 14
Info Hearing/Site Visit	January 25	January 25
Circulate SA/DEIS and Receive Comments from BLM, FWS, and CDFG	January 22 – Feb 5	February 19 – March 5
Format SA/DEIS	February 8 - 17	March 8 – 17
Publish SA/DEIS	February 18	March 18
Note – The Biological Assessment and Biological Opinion dates will be determined by when the applicant provides the complete Spring Survey results for the Proposed Transmission Line		
Local, state and federal agency comments due	March 18	March 18
Publish SAE/FEIS	July 30	July 30
Prehearing Conference*	TBD	TBD
Evidentiary hearings*	TBD	TBD
Presiding Members Proposed Decision (PMPD)*	TBD	TBD
Committee Hearing on PMPD*	TBD	TBD
Addendum/Revised PMPD*	TBD	TBD
BLM Record of Decision/Right of Way (ROD/ROW) issued; Energy Commission Decision*	TBD	TBD
*The assigned Committee will determine this part of the schedule.		



Factors That Can Affect Schedule

- Meeting this schedule will depend on:
 - ❖ Applicant's timely response to the joint agency staff's data requests
 - ❖ Determinations by other local, state, and federal agencies
 - ❖ Timely preparation of required documents
 - ❖ Number and complexity of comments received during the NEPA comment or protest periods
 - ❖ Other factors not yet known

