



CALPINE CORPORATION

4160 DUBLIN BOULEVARD
SUITE 100
DUBLIN, CA 94568
925.557.2224 (M)
925.479.9560 (F)

May 5, 2011

Ms. Christina Stora
Compliance Project Manager
California Energy Commission
1516 9th Street
Sacramento, CA 95614

DOCKET

97-AFC-2C

DATE	MAY 05 2011
RECD.	MAY 19 2011

RE: Change in Size of the Grimes Station Pad (97-AFC-02C)

Dear Ms. Stora:

On behalf of the Calpine Construction Finance Company, L.P. and CPN Pipeline Company, this letter describes a proposed reduction in the size of the Grimes Station pad in response to a landowner's concern.

Calpine will reduce the size of the Grimes Station pad from 150 feet by 150 feet (as proposed in the Amendment) to 100 feet by 100 feet. The total area of the revised Grimes Station pad will be 0.22 acre. The entrance to the Grimes Station will be moved approximately 50 feet to the east of the original entrance location. The entrance way will be reduced in width from 60 feet to 30 feet. There will be no change in the scope of the facilities at the Grimes Station, although the facilities will be configured closer together and with this change there will be less underground piping. See the attached revised Figure 2 for the revised facilities layout. The temporary construction footprint for the Grimes Station will remain at 0.8 acre.

Environmental Impacts

Several trees growing in the drainage ditch between Girdner Road and the Grimes Station pad site will be removed to accommodate the new location of the driveway. While the width of the entrance to the Grimes Station would be reduced, approximately 5 trees varying in height from about 3 to 10 feet (3 willows and 2 oaks) would be removed. See the attached photo for site conditions at the new entrance way. The removal of these trees is not a significant impact.



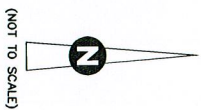
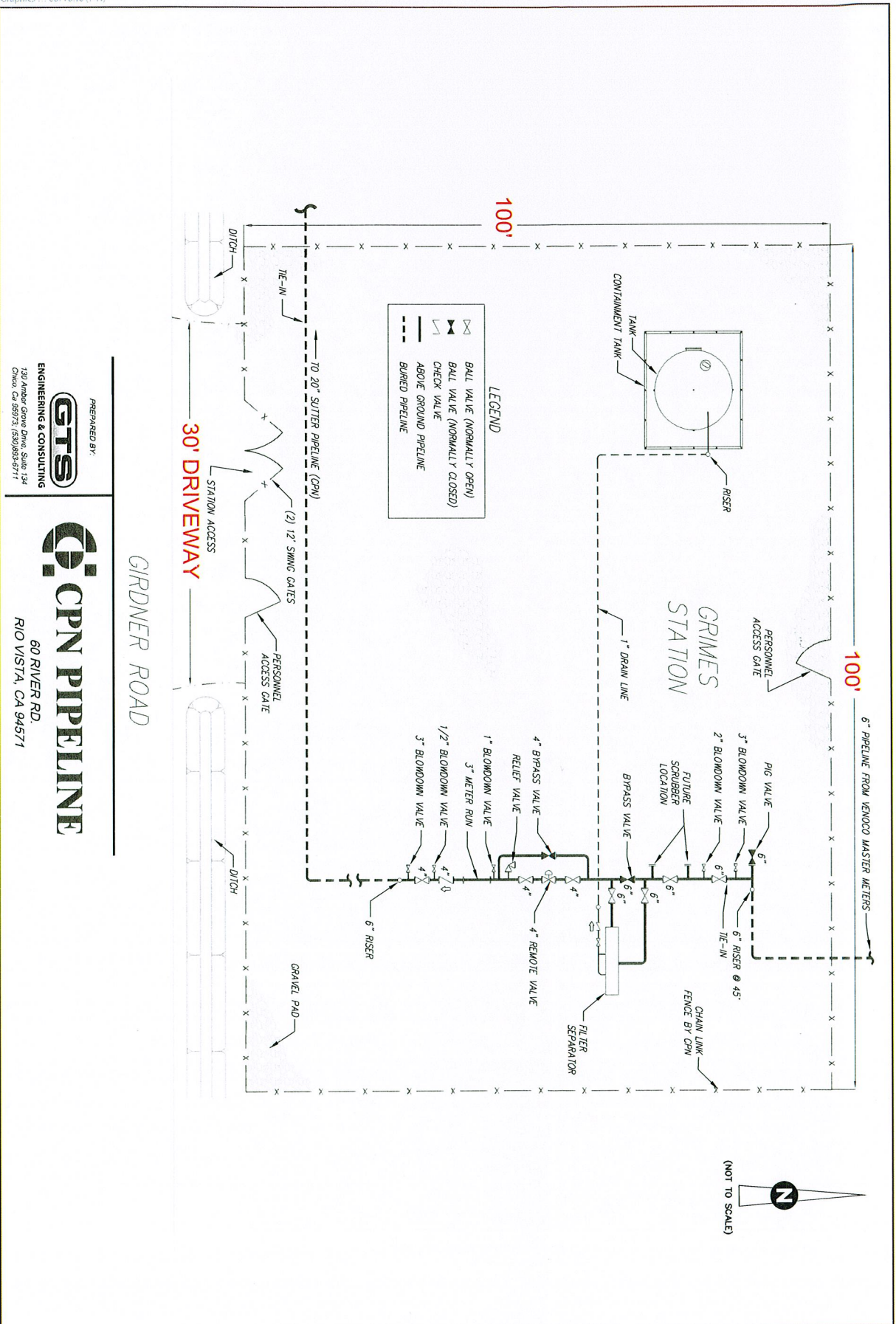
The attached Corrections and Clarifications table presents revised wording to Sections 1.1 (item no. 1), 2.2.2 (item nos. 6, 7, 8, 9), 3.6 (item nos. 10, 11, 12, 13, 14), and Appendices A, C and E (item nos. 15, 16, 17, 18 and 19) of the Amendment.

If you have any questions, please contact me at (925) 557-2238.

Sincerely,

A handwritten signature in blue ink, appearing to be 'Barbara McBride', written over a horizontal line.

Barbara McBride
Western Regional Director, Environmental Health and Safety



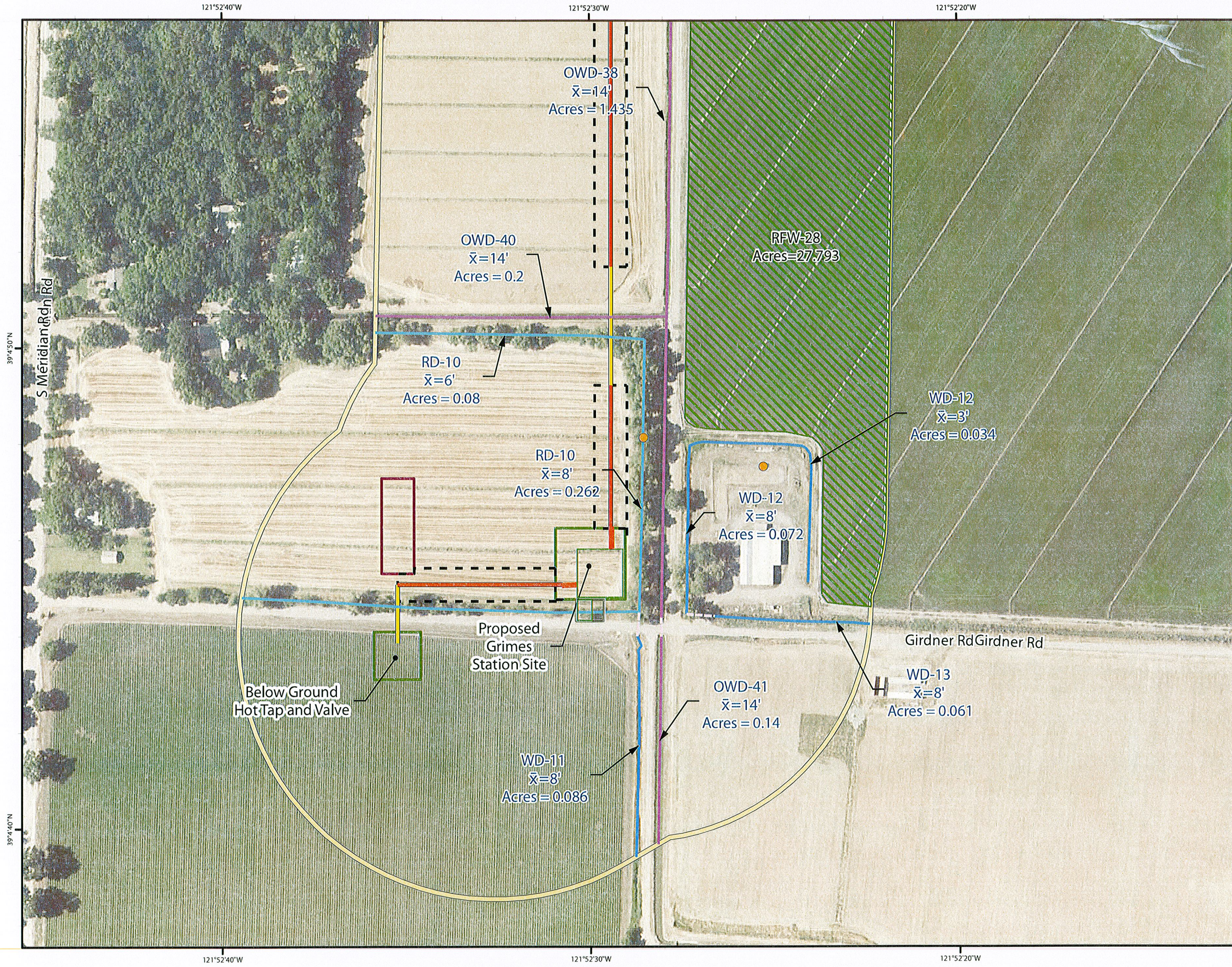
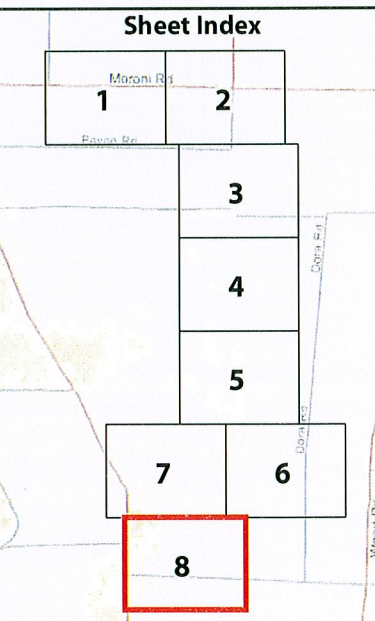
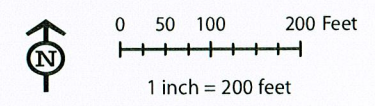


Exhibit 1
Project Alignment
Grimes Pipeline Project
January 2011
Sheet 8 of 8

- Natural Gas Pipeline Trench
(temporary sidecast fill in
rice= 1.41 acres, 9230 CY)
- Bore
- Project Element
- Construction Laydown Area
- Access Road (permanent fill in
drainage = 0.012 acres,
60-foot culvert)
- Pipeline Work Area
- Wetland and Biological
Study Area (395.88 Acres)
- Culvert
- Other Waters Drainage
- Riparian Drainage
- Wetland Drainage
- Ricefield Wetland
- Elderberry Shrub



1. Base Map Source: ICF, 2010
2. Aerial Source: ESRI / Aerial Express 2007
3. USGS Topo Quad: Grimes & Tisdale Weir
4. PLSS: T. 14, R. 1 E
Drawn By: Matt Ewalt
Jan 2011





PROPOSED TREE
REMOVAL

2011/04/21

**Corrections and Clarifications
To the
Grimes Pipeline Project Amendment
To
Sutter Energy Center AFC-97-02**

Item No.	Page	Reads	Should Read
1	Page 1, Section 1.1 Overview of Amendment, third paragraph, second sentence.	Grimes Station will be located on approximately 0.5 acre on Girdner Road just west of Hageman Road, approximately 400 feet from the Grimes Pipeline's first point of interconnection with the existing 20-inch Sutter pipeline that serves SEC.	Grimes Station will be located on approximately 0.22 acre on Girdner Road just west of Hageman Road, approximately 450 feet from the Grimes Pipeline's first point of interconnection with the existing 20-inch Sutter pipeline that serves SEC.
2	Page 1, Section 1.2 Summary of Environmental Impacts, fifth sentence	The Project owner has proposed 28 Conditions of Certification in Section 4.0 of this Amendment..."	The Project owner has proposed 27 Conditions of Certification in Section 4.0 of this Amendment..."
3	Page 3-5 of Appendix E Biological Assessment, Section 3.4.3 Construction Schedule, second sentence.	"The pipeline installation will be planned to start right after the rice harvest (June 2011) and be completed..."	"The pipeline installation will be planned to start in July 2011 and be completed..."
4	Page 3-11 of Appendix E Biological Assessment, Section 3.5.3.1 Avoidance and Minimization, first bullet.	"Central Valley will ensure..."	"Calpine will ensure..."
5	Page 14, Table 1, Williamson Act Contracts Identified in the Project Area.	Add line for APN 13-160-060 in the Table	"APN: 13-160-060 Lot No.: 207 Total Acreage of Contract Lands 54.57 Project Component Located on Contract Lands: Gas pipeline/right of way" See attached revised Table 1, revised based upon a new March 2011 title search.

Item No.	Page	Reads	Should Read
6	Page 3, Section 2.2.2 Grimes Pipeline, third paragraph, second sentence	Grimes Station will be located on approximately 0.5 acre on Girdner Road just west of Hageman road, approximately 400 feet from the Grimes Pipeline's first point of interconnection ...	Grimes Station will be located on approximately 0.22 acre on Girdner Road just west of Hageman road, approximately 450 feet from the Grimes Pipeline's first point of interconnection ...
7	Page 4, Section 2.2.2 Grimes Station, second sentence.	The Grimes Station facility will be a 150-by-150-foot approximately 0.5 acre area with a 3-foot-thick gravel pad. The facility layout is shown in Figure 2 and includes the following components.	The Grimes Station facility will be a 100-by-100-foot approximately 0.22 acre area with a 3-foot-thick gravel pad. The facility layout is shown in Figure 2 (see revised Figure 2) and includes the following components.
8	Page 5, Section 2.2.2 Grimes Station, second bullet.	<ul style="list-style-type: none"> • A 60-foot-wide access road off Girdner road. 	<ul style="list-style-type: none"> • A 30-foot-wide access road off Girdner road.
9	Page 5 first paragraph first sentence.	The approximately 0.5-acre gravel pad will accommodate the above-described facilities as well as equipment and vehicle access and turnouts.	The approximately 0.22-acre gravel pad will accommodate the above-described facilities as well as equipment and vehicle access and turnouts.
10	Page 14, Section 3.6 Land Use ,Table 1, line 2, APN 21-040-010	Total Acreage of contract Lands is 6.56	Total Acreage of Contract Lands is 16.56
11	Page 14, Section 3.6 Land Use, first paragraph, lines 6 and 7.	Of the approximately 12.5 acres of land that are crossed by the Project and are under Williamson Act contracts, the project would temporarily disturb, 11.2 acres of Williamson Act contract lands associated with construction of the underground gas pipeline and an additional 0.8 acre of temporary impact to Williamson Act contract ands to construct the	Of the approximately 17.6 acres of land that are crossed by the project and are under Williamson Act contracts, the Project would temporarily disturb 16.3 acres of Williamson Act contract lands associated with construction of the underground gas pipeline and an additional 0.58 acre of temporary impact to Williamson Act contract lands to construct the

		Grimes Station. Only 0.5 acre of Williamson Act contract land will be permanently impacted to construct the Grimes Station.	Grimes Station. Only 0.22 acre of Williamson Act contract land will be permanently impacted to construct the Grimes Station.
12	Page 15 Section 3.6 Land use, first sentence.	Construction of the Grimes Pipeline will temporarily affect approximately 28.2 acres of land, and approximately 0.5 acres will be permanently occupied by the Grimes Station, as shown in Table 2.	Construction of the Grimes Pipeline will temporarily affect approximately 28.2 acres of land, and approximately 0.22 acres will be permanently occupied by the Grimes Station, as shown in Table 2,
13	Page 15 Section 3.6 Land use, Table 2 Grimes Station.	Permanent acreage is 0.5 acres, temporary is 0.3, Total is 0.8.	Permanent acreage is 0.22 acres, temporary is 0.58, Total is 0.8
14	Page 15 Section 3.6 Land use, Table 2 Total Project land disturbance requirements.	Permanent 0.5 acres, Temporary 29.8 , Total 29.3	Permanent 0.22 acres, Temporary 29.8 , Total 29.3
15	Appendix A Project Alignment Sheets.	Sheet 8	Replace with revised Sheet 8 (attached)
16	Appendix C Biological Resources Study Report, Page 16, first paragraph, first sentence.	The 0.5 acre Grimes Station site is within and adjacent to habitats that provided foraging and...	The 0.22 acre Grimes Station site is within and adjacent to habitats that provided foraging and...
17	Appendix C Biological Resources Study Report, Page 16, second paragraph, second sentence.	In addition, the 0.5 acre of row crop that will be removed to construct the Grimes Station is considered small....	In addition, the 0.22 acre of row crop that will be removed to construct the Grimes Station is considered small....
18	Appendix C, page 19, Cumulative Effects	However, the proposed Project will convert approximately 0.5 acre of row crop to industrial development.	However, the proposed Project will convert approximately 0.22 acre of row crop to industrial development.
19	Appendix E Biological Assessment, Exhibit 1 Project Alignment Sheets	Sheet 8	Replace with revised Sheet 8 (Attached)