

On March 8, 2013 CEC docketed CEC letters to tribal entities listed with the California Native American Heritage Commission that are considered affiliated with the Palen Solar Electric Generating Systems Project. Subsequently, in coordination with the BLM, additional tribes were identified that were potentially affiliated with the project. The CEC sent letters of “Invitation to Consult Concerning the Palen Solar Electric Generating Systems Project” to the additional BLM listed Tribal entities.

California Energy Commission

DOCKETED
09-AFC-7C

TN # 70278

APR 11 2013

This docket contains the following documents:

1. Site Vicinity Map and a PSEGS Facility Boundary Map. Each California Energy Commission Letter to each tribal entity also included two attached project maps; a Project Vicinity Map and a Project Site Map.
2. California Energy Commission letters dated April 3, 2013 to each of the tribal entities listed on the BLM Tribal Leader Directory. This docket contains 16 California Energy Commission letters to tribal entities.

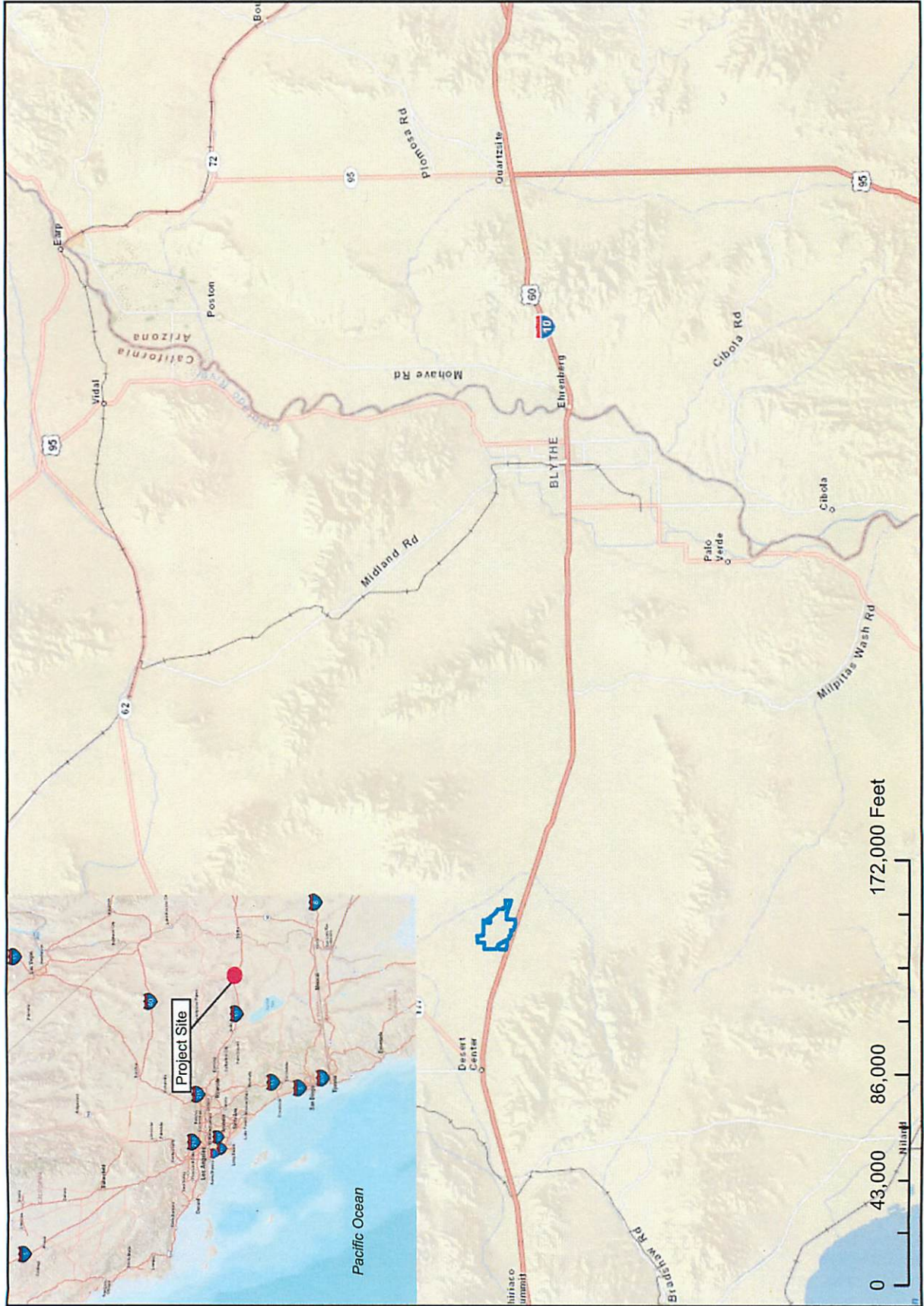
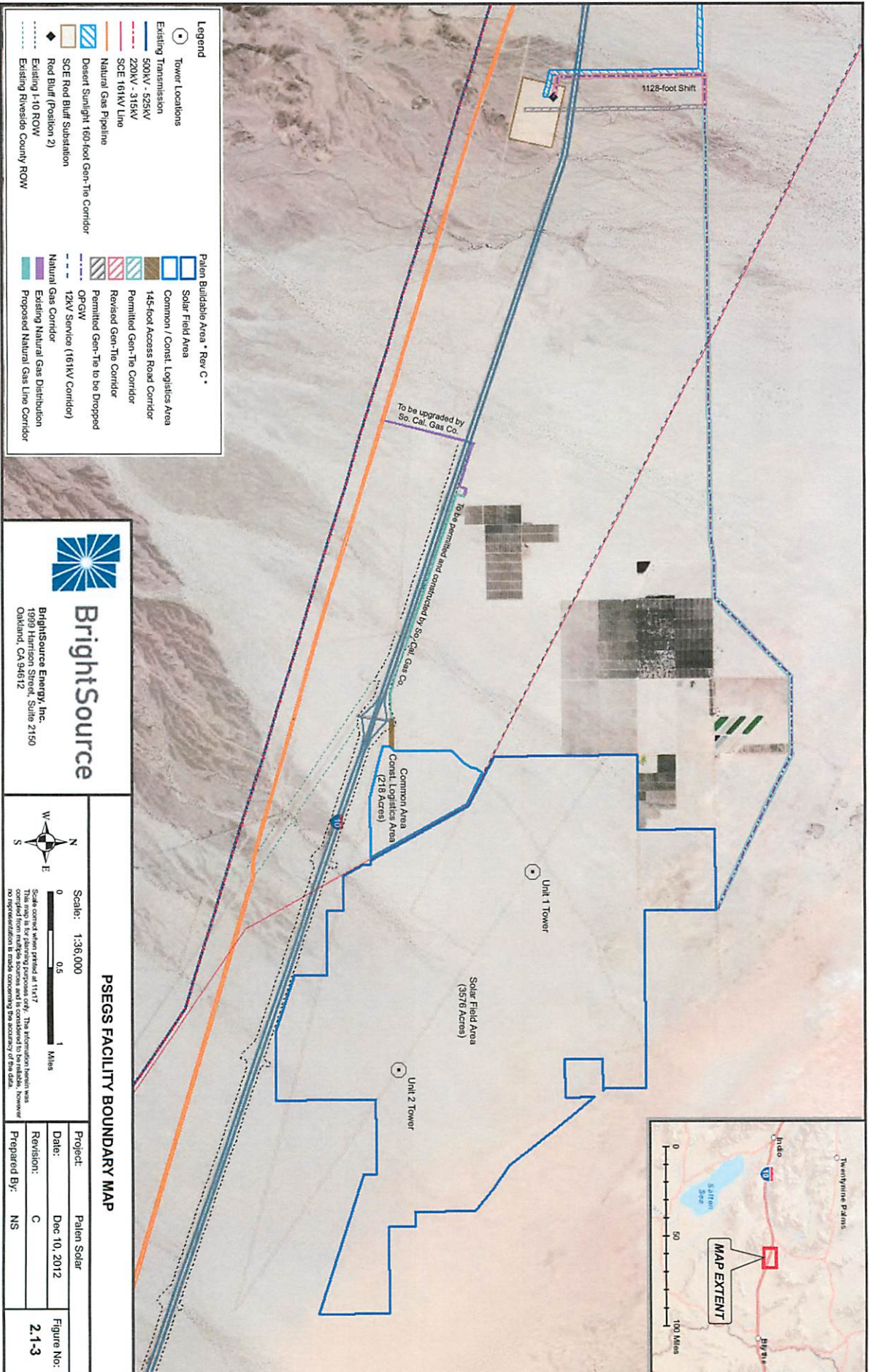


FIGURE NO. 2.1-1
SITE VICINITY MAP



Legend

- Palen Solar Electric Generating System



- Legend**
- Tower Locations
 - Existing Transmission
 - 500kV - 525kV
 - 220kV - 315kV
 - SCE 161kV Line
 - Natural Gas Pipeline
 - Desert Sunlight 160-foot Gen-Tie Corridor
 - SCE Road Buffer Substation
 - Road Buffer (Position 2)
 - Existing 1-10 ROW
 - Existing Riverside County ROW

- Palen Buildable Area * Rev C ***
- Solar Field Area
 - Common / Const. Logistics Area
 - 145-foot Access Road Corridor
 - Permitted Gen-Tie Corridor
 - Revised Gen-Tie Corridor
 - Permitted Gen-Tie to be Dropped
 - OPGW
 - 12kV Service (161kV Corridor)
 - Natural Gas Corridor
 - Existing Natural Gas Distribution
 - Proposed Natural Gas Line Corridor

BrightSource

BrightSource Energy, Inc.
1090 Harrison Street, Suite 2150
Oakland, CA 94612

PSEG FACILITY BOUNDARY MAP

Scale: 1:36,000

0 0.5 1 Miles

This map is for planning purposes only. The information herein was prepared as of the date of the data. No representation is made concerning the accuracy of the data.

Project:	Palen Solar	Figure No:	2.1-3
Date:	Dec 10, 2012		
Revision:	C		
Prepared By:	NS		

CALIFORNIA ENERGY COMMISSION

1516 NINTH STREET
SACRAMENTO, CA 95814-5512
www.energy.ca.gov



April 3, 2013

Honorable Mary Ann Green, Chairwoman
Augustine Band of Cahuilla Indians
P.O. Box 846
Coachella, CA 92236

RE: Palen Solar Electric Generating System (09-AFC-7C) - Invitation to Participate in California Energy Commission Project Review/ Tribal Consultation

Dear Chairwoman Green,

Your name was provided to the California Energy Commission (Energy Commission) by the Bureau of Land Management (BLM), as a representative of a Native American community who might be interested in the change in the design of the Palen Solar Power Project. The project is proposed to be located on 3,794 acres of BLM land in Riverside County, California and is located approximately ¼ mile north of Interstate 10 near the Corn Springs Road exit, ten miles east of Desert Center and approximately halfway between the cities of Indio and Blythe. This letter provides general information concerning the project design changes, includes attached exhibits depicting the vicinity and project site location, and invites the tribe to participate in Energy Commission consultations with affiliated tribes

On December 17, 2012, Palen Solar Holdings, LLC (PSH) filed a Petition to Amend with the Energy Commission requesting to modify the Palen Solar Power Project. The project, as licensed on December 15, 2010 by the Energy Commission, is a 500-megawatt (MW) solar thermal power generating facility utilizing parabolic trough technology. In the 2012 petition, PSH proposes changes to the approved site layout and technology associated with the approved project. PSH proposes to use solar tower technology. Heliostats, elevated mirrors mounted on a pylon guided by a tracking system, will be used to focus the sun's rays on a solar receiver steam generator (SRSG) located atop a 750-foot tall solar tower near the center of each of two solar fields, to create steam. The modified project, which is named the Palen Solar Electric Generating System (PSEGS), will be comprised of two adjacent solar fields and associated facilities with a total combined nominal output of approximately 500 MW. PSH proposes to develop PSEGS in two operational phases: each phase will consist of one solar field and power block with approximately 250 MW of generation capacity. Each solar field will have an array of approximately 85,000 heliostats for a total of 170,000 heliostats for the project. Each phase will also share common facilities, including a common area containing an administration building, warehouse, evaporation ponds, maintenance complex and a meter/valve station for incoming natural gas service to the site, an onsite switchyard, and a single-circuit 230 kV generation tie-line to deliver power to the electricity grid. Other onsite facilities will include access and maintenance roads (either dirt, gravel or paved), perimeter fencing, tortoise fencing and other

April 3, 2013

Page 2

ancillary security facilities. PSH does not propose to change the generating capacity of the Energy Commission-approved project, the site access, or the interconnection point at Red Bluff Substation, although there will be a slight re-routing of the generation tie-line near the western end of the route and around Southern California Edison's newly constructed Red Bluff Substation. In addition to approval from the Energy Commission, the amended project will require BLM to complete an environmental review and grant a right-of-way lease.

Over the coming months, the Energy Commission will be holding a number of public workshops and hearings on the proposal to determine whether the modified project should be approved for construction and operation and under what set of conditions. These workshops and hearings will provide the public and tribes, as well as local, state and federal agencies, the opportunity to ask questions about, and provide input on, the proposed modifications. The Energy Commission will issue notices for these workshops and hearings at least 10 days prior to the meeting. If you want to be notified by e-mail whenever a public meeting is scheduled or a document is posted to the project website, you can sign up for the project list server on the web page. Public notices can also be sent to you by mail at your request. Should the Tribe request, Energy Commission staff will arrange for a separate meeting to discuss issues that the Tribe may wish to hold in confidence from the general public.

To view a copy of the Petition to Amend for this compliance proceeding (09-AFC-7C) and find more information about the project and proceedings, please visit the project website: <http://www.energy.ca.gov/sitingcases/palen>. Please consider reviewing the above referenced project information so that we can promptly proceed to meaningful dialogue that matches the pace of the project compliance process. Staff anticipates publishing its Preliminary Staff Assessment on the petition in May 2013. Staff will be following up this letter with phone calls to ascertain the tribe's level of interest. The Energy Commission staff looks forward to your comments or questions. If you would like to talk with staff about concerns regarding impacts that Palen Solar Power Plant modifications could have on resources of concern to the Tribe or arrange a meeting, please contact Thomas Gates at (916) 654-5008; Fax: (916) 651-8868; or thomas.gates@energy.ca.gov.

Sincerely,

ROGER E. JOHNSON
Deputy Director

Siting, Transmission and Environmental Protection Division
Energy Commission Tribal Liaison

Enclosures: Site Vicinity Map
PSEGS Facility Boundary Map

CALIFORNIA ENERGY COMMISSION

1516 NINTH STREET
SACRAMENTO, CA 95814-5512
www.energy.ca.gov



April 3, 2013

Honorable David Roosevelt, Chairman
Cabazon Band of Mission Indians
84-245 Indio Springs Parkway
Indio, CA 92203-3499

RE: Palen Solar Electric Generating System (09-AFC-7C) - Invitation to Participate in California Energy Commission Project Review/ Tribal Consultation

Dear Chairman Roosevelt,

Your name was provided to the California Energy Commission (Energy Commission) by the Bureau of Land Management (BLM), as a representative of a Native American community who might be interested in the change in the design of the Palen Solar Power Project. The project is proposed to be located on 3,794 acres of BLM land in Riverside County, California and is located approximately ¼ mile north of Interstate 10 near the Corn Springs Road exit, ten miles east of Desert Center and approximately halfway between the cities of Indio and Blythe. This letter provides general information concerning the project design changes, includes attached exhibits depicting the vicinity and project site location, and invites the tribe to participate in Energy Commission consultations with affiliated tribes

On December 17, 2012, Palen Solar Holdings, LLC (PSH) filed a Petition to Amend with the Energy Commission requesting to modify the Palen Solar Power Project. The project, as licensed on December 15, 2010 by the Energy Commission, is a 500-megawatt (MW) solar thermal power generating facility utilizing parabolic trough technology. In the 2012 petition, PSH proposes changes to the approved site layout and technology associated with the approved project. PSH proposes to use solar tower technology. Heliostats, elevated mirrors mounted on a pylon guided by a tracking system, will be used to focus the sun's rays on a solar receiver steam generator (SRSG) located atop a 750-foot tall solar tower near the center of each of two solar fields, to create steam. The modified project, which is named the Palen Solar Electric Generating System (PSEGS), will be comprised of two adjacent solar fields and associated facilities with a total combined nominal output of approximately 500 MW. PSH proposes to develop PSEGS in two operational phases: each phase will consist of one solar field and power block with approximately 250 MW of generation capacity. Each solar field will have an array of approximately 85,000 heliostats for a total of 170,000 heliostats for the project. Each phase will also share common facilities, including a common area containing an administration building, warehouse, evaporation ponds, maintenance complex and a meter/valve station for incoming natural gas service to the site, an onsite switchyard, and a single-circuit 230 kV generation tie-line to deliver power to the electricity grid. Other onsite facilities will include access and maintenance

April 3, 2013

Page 2

roads (either dirt, gravel or paved), perimeter fencing, tortoise fencing and other ancillary security facilities. PSH does not propose to change the generating capacity of the Energy Commission-approved project, the site access, or the interconnection point at Red Bluff Substation, although there will be a slight re-routing of the generation tie-line near the western end of the route and around Southern California Edison's newly constructed Red Bluff Substation. In addition to approval from the Energy Commission, the amended project will require BLM to complete an environmental review and grant a right-of-way lease.

Over the coming months, the Energy Commission will be holding a number of public workshops and hearings on the proposal to determine whether the modified project should be approved for construction and operation and under what set of conditions. These workshops and hearings will provide the public and tribes, as well as local, state and federal agencies, the opportunity to ask questions about, and provide input on, the proposed modifications. The Energy Commission will issue notices for these workshops and hearings at least 10 days prior to the meeting. If you want to be notified by e-mail whenever a public meeting is scheduled or a document is posted to the project website, you can sign up for the project list server on the web page. Public notices can also be sent to you by mail at your request. Should the Tribe request, Energy Commission staff will arrange for a separate meeting to discuss issues that the Tribe may wish to hold in confidence from the general public.

To view a copy of the Petition to Amend for this compliance proceeding (09-AFC-7C) and find more information about the project and proceedings, please visit the project website: <http://www.energy.ca.gov/sitingcases/palen>. Please consider reviewing the above referenced project information so that we can promptly proceed to meaningful dialogue that matches the pace of the project compliance process. Staff anticipates publishing its Preliminary Staff Assessment on the petition in May 2013. Staff will be following up this letter with phone calls to ascertain the tribe's level of interest. The Energy Commission staff looks forward to your comments or questions. If you would like to talk with staff about concerns regarding impacts that Palen Solar Power Plant modifications could have on resources of concern to the Tribe or arrange a meeting, please contact Thomas Gates at (916) 654-5008; Fax: (916) 651-8868; or thomas.gates@energy.ca.gov.

Sincerely,

ROGER E. JOHNSON
Deputy Director

Siting, Transmission and Environmental Protection Division
Energy Commission Tribal Liaison

Enclosures: Site Vicinity Map
PSEGS Facility Boundary Map

CALIFORNIA ENERGY COMMISSION

1516 NINTH STREET
SACRAMENTO, CA 95814-5512
www.energy.ca.gov



April 3, 2013

Luther Salgado, Sr., Chairman
Cahuilla Band of Mission Indians
P.O. Box 391741
Anza, CA 92539-1760

RE: Palen Solar Electric Generating System (09-AFC-7C) - Invitation to Participate in California Energy Commission Project Review/ Tribal Consultation

Dear Chairman Salgado,

Your name was provided to the California Energy Commission (Energy Commission) by the Bureau of Land Management (BLM), as a representative of a Native American community who might be interested in the change in the design of the Palen Solar Power Project. The project is proposed to be located on 3,794 acres of BLM land in Riverside County, California and is located approximately ¼ mile north of Interstate 10 near the Corn Springs Road exit, ten miles east of Desert Center and approximately halfway between the cities of Indio and Blythe. This letter provides general information concerning the project design changes, includes attached exhibits depicting the vicinity and project site location, and invites the tribe to participate in Energy Commission consultations with affiliated tribes

On December 17, 2012, Palen Solar Holdings, LLC (PSH) filed a Petition to Amend with the Energy Commission requesting to modify the Palen Solar Power Project. The project, as licensed on December 15, 2010 by the Energy Commission, is a 500-megawatt (MW) solar thermal power generating facility utilizing parabolic trough technology. In the 2012 petition, PSH proposes changes to the approved site layout and technology associated with the approved project. PSH proposes to use solar tower technology. Heliostats, elevated mirrors mounted on a pylon guided by a tracking system, will be used to focus the sun's rays on a solar receiver steam generator (SRSG) located atop a 750-foot tall solar tower near the center of each of two solar fields, to create steam. The modified project, which is named the Palen Solar Electric Generating System (PSEGS), will be comprised of two adjacent solar fields and associated facilities with a total combined nominal output of approximately 500 MW. PSH proposes to develop PSEGS in two operational phases: each phase will consist of one solar field and power block with approximately 250 MW of generation capacity. Each solar field will have an array of approximately 85,000 heliostats for a total of 170,000 heliostats for the project. Each phase will also share common facilities, including a common area containing an administration building, warehouse, evaporation ponds, maintenance complex and a meter/valve station for incoming natural gas service to the site, an onsite switchyard, and a single-circuit 230 kV generation tie-line to deliver power to the electricity grid. Other onsite facilities will include access and maintenance

April 3, 2013

Page 2

roads (either dirt, gravel or paved), perimeter fencing, tortoise fencing and other ancillary security facilities. PSH does not propose to change the generating capacity of the Energy Commission-approved project, the site access, or the interconnection point at Red Bluff Substation, although there will be a slight re-routing of the generation tie-line near the western end of the route and around Southern California Edison's newly constructed Red Bluff Substation. In addition to approval from the Energy Commission, the amended project will require BLM to complete an environmental review and grant a right-of-way lease.

Over the coming months, the Energy Commission will be holding a number of public workshops and hearings on the proposal to determine whether the modified project should be approved for construction and operation and under what set of conditions. These workshops and hearings will provide the public and tribes, as well as local, state and federal agencies, the opportunity to ask questions about, and provide input on, the proposed modifications. The Energy Commission will issue notices for these workshops and hearings at least 10 days prior to the meeting. If you want to be notified by e-mail whenever a public meeting is scheduled or a document is posted to the project website, you can sign up for the project list server on the web page. Public notices can also be sent to you by mail at your request. Should the Tribe request, Energy Commission staff will arrange for a separate meeting to discuss issues that the Tribe may wish to hold in confidence from the general public.

To view a copy of the Petition to Amend for this compliance proceeding (09-AFC-7C) and find more information about the project and proceedings, please visit the project website: <http://www.energy.ca.gov/sitingcases/palen>. Please consider reviewing the above referenced project information so that we can promptly proceed to meaningful dialogue that matches the pace of the project compliance process. Staff anticipates publishing its Preliminary Staff Assessment on the petition in May 2013. Staff will be following up this letter with phone calls to ascertain the tribe's level of interest. The Energy Commission staff looks forward to your comments or questions. If you would like to talk with staff about concerns regarding impacts that Palen Solar Power Plant modifications could have on resources of concern to the Tribe or arrange a meeting, please contact Thomas Gates at (916) 654-5008; Fax: (916) 651-8868; or thomas.gates@energy.ca.gov.

Sincerely,

ROGER E. JOHNSON
Deputy Director

Siting, Transmission and Environmental Protection Division
Energy Commission Tribal Liaison

Enclosures: Site Vicinity Map
PSEGS Facility Boundary Map

CALIFORNIA ENERGY COMMISSION

1516 NINTH STREET
SACRAMENTO, CA 95814-5512
www.energy.ca.gov



April 3, 2013

Honorable Robert Martin, Chairman
Morongo Band of Mission Indians
12700 Pumarra Road
Banning, CA 92220

RE: Palen Solar Electric Generating System (09-AFC-7C) - Invitation to Participate in California Energy Commission Project Review/ Tribal Consultation

Dear Chairman Martin,

Your name was provided to the California Energy Commission (Energy Commission) by the Bureau of Land Management (BLM), as a representative of a Native American community who might be interested in the change in the design of the Palen Solar Power Project. The project is proposed to be located on 3,794 acres of BLM land in Riverside County, California and is located approximately ¼ mile north of Interstate 10 near the Corn Springs Road exit, ten miles east of Desert Center and approximately halfway between the cities of Indio and Blythe. This letter provides general information concerning the project design changes, includes attached exhibits depicting the vicinity and project site location, and invites the tribe to participate in Energy Commission consultations with affiliated tribes

On December 17, 2012, Palen Solar Holdings, LLC (PSH) filed a Petition to Amend with the Energy Commission requesting to modify the Palen Solar Power Project. The project, as licensed on December 15, 2010 by the Energy Commission, is a 500-megawatt (MW) solar thermal power generating facility utilizing parabolic trough technology. In the 2012 petition, PSH proposes changes to the approved site layout and technology associated with the approved project. PSH proposes to use solar tower technology. Heliostats, elevated mirrors mounted on a pylon guided by a tracking system, will be used to focus the sun's rays on a solar receiver steam generator (SRSG) located atop a 750-foot tall solar tower near the center of each of two solar fields, to create steam. The modified project, which is named the Palen Solar Electric Generating System (PSEGS), will be comprised of two adjacent solar fields and associated facilities with a total combined nominal output of approximately 500 MW. PSH proposes to develop PSEGS in two operational phases: each phase will consist of one solar field and power block with approximately 250 MW of generation capacity. Each solar field will have an array of approximately 85,000 heliostats for a total of 170,000 heliostats for the project. Each phase will also share common facilities, including a common area containing an administration building, warehouse, evaporation ponds, maintenance complex and a meter/valve station for incoming natural gas service to the site, an onsite switchyard, and a single-circuit 230 kV generation tie-line to deliver power to the electricity grid. Other onsite facilities will include access and maintenance

April 3, 2013

Page 2

roads (either dirt, gravel or paved), perimeter fencing, tortoise fencing and other ancillary security facilities. PSH does not propose to change the generating capacity of the Energy Commission-approved project, the site access, or the interconnection point at Red Bluff Substation, although there will be a slight re-routing of the generation tie-line near the western end of the route and around Southern California Edison's newly constructed Red Bluff Substation. In addition to approval from the Energy Commission, the amended project will require BLM to complete an environmental review and grant a right-of-way lease.

Over the coming months, the Energy Commission will be holding a number of public workshops and hearings on the proposal to determine whether the modified project should be approved for construction and operation and under what set of conditions. These workshops and hearings will provide the public and tribes, as well as local, state and federal agencies, the opportunity to ask questions about, and provide input on, the proposed modifications. The Energy Commission will issue notices for these workshops and hearings at least 10 days prior to the meeting. If you want to be notified by e-mail whenever a public meeting is scheduled or a document is posted to the project website, you can sign up for the project list server on the web page. Public notices can also be sent to you by mail at your request. Should the Tribe request, Energy Commission staff will arrange for a separate meeting to discuss issues that the Tribe may wish to hold in confidence from the general public.

To view a copy of the Petition to Amend for this compliance proceeding (09-AFC-7C) and find more information about the project and proceedings, please visit the project website: <http://www.energy.ca.gov/sitingcases/palen>. Please consider reviewing the above referenced project information so that we can promptly proceed to meaningful dialogue that matches the pace of the project compliance process. Staff anticipates publishing its Preliminary Staff Assessment on the petition in May 2013. Staff will be following up this letter with phone calls to ascertain the tribe's level of interest. The Energy Commission staff looks forward to your comments or questions. If you would like to talk with staff about concerns regarding impacts that Palen Solar Power Plant modifications could have on resources of concern to the Tribe or arrange a meeting, please contact Thomas Gates at (916) 654-5008; Fax: (916) 651-8868; or thomas.gates@energy.ca.gov.

Sincerely,

ROGER E. JOHNSON
Deputy Director

Siting, Transmission and Environmental Protection Division
Energy Commission Tribal Liaison

Enclosures: Site Vicinity Map
PSEGS Facility Boundary Map

CALIFORNIA ENERGY COMMISSION

1516 NINTH STREET
SACRAMENTO, CA 95814-5512
www.energy.ca.gov



April 3, 2013

Honorable Joseph Hamilton, Chairman
Ramona Band of Mission Indians
P.O. Box 391372
Anza, CA 92539

RE: Palen Solar Electric Generating System (09-AFC-7C) - Invitation to Participate in California Energy Commission Project Review/ Tribal Consultation

Dear Chairman Hamilton,

Your name was provided to the California Energy Commission (Energy Commission) by the Bureau of Land Management (BLM), as a representative of a Native American community who might be interested in the change in the design of the Palen Solar Power Project. The project is proposed to be located on 3,794 acres of BLM land in Riverside County, California and is located approximately ¼ mile north of Interstate 10 near the Corn Springs Road exit, ten miles east of Desert Center and approximately halfway between the cities of Indio and Blythe. This letter provides general information concerning the project design changes, includes attached exhibits depicting the vicinity and project site location, and invites the tribe to participate in Energy Commission consultations with affiliated tribes

On December 17, 2012, Palen Solar Holdings, LLC (PSH) filed a Petition to Amend with the Energy Commission requesting to modify the Palen Solar Power Project. The project, as licensed on December 15, 2010 by the Energy Commission, is a 500-megawatt (MW) solar thermal power generating facility utilizing parabolic trough technology. In the 2012 petition, PSH proposes changes to the approved site layout and technology associated with the approved project. PSH proposes to use solar tower technology. Heliostats, elevated mirrors mounted on a pylon guided by a tracking system, will be used to focus the sun's rays on a solar receiver steam generator (SRSG) located atop a 750-foot tall solar tower near the center of each of two solar fields, to create steam. The modified project, which is named the Palen Solar Electric Generating System (PSEGS), will be comprised of two adjacent solar fields and associated facilities with a total combined nominal output of approximately 500 MW. PSH proposes to develop PSEGS in two operational phases: each phase will consist of one solar field and power block with approximately 250 MW of generation capacity. Each solar field will have an array of approximately 85,000 heliostats for a total of 170,000 heliostats for the project. Each phase will also share common facilities, including a common area containing an administration building, warehouse, evaporation ponds, maintenance complex and a meter/valve station for incoming natural gas service to the site, an onsite switchyard, and a single-circuit 230 kV generation tie-line to deliver power to the electricity grid. Other onsite facilities will include access and maintenance

April 3, 2013

Page 2

roads (either dirt, gravel or paved), perimeter fencing, tortoise fencing and other ancillary security facilities. PSH does not propose to change the generating capacity of the Energy Commission-approved project, the site access, or the interconnection point at Red Bluff Substation, although there will be a slight re-routing of the generation tie-line near the western end of the route and around Southern California Edison's newly constructed Red Bluff Substation. In addition to approval from the Energy Commission, the amended project will require BLM to complete an environmental review and grant a right-of-way lease.

Over the coming months, the Energy Commission will be holding a number of public workshops and hearings on the proposal to determine whether the modified project should be approved for construction and operation and under what set of conditions. These workshops and hearings will provide the public and tribes, as well as local, state and federal agencies, the opportunity to ask questions about, and provide input on, the proposed modifications. The Energy Commission will issue notices for these workshops and hearings at least 10 days prior to the meeting. If you want to be notified by e-mail whenever a public meeting is scheduled or a document is posted to the project website, you can sign up for the project list server on the web page. Public notices can also be sent to you by mail at your request. Should the Tribe request, Energy Commission staff will arrange for a separate meeting to discuss issues that the Tribe may wish to hold in confidence from the general public.

To view a copy of the Petition to Amend for this compliance proceeding (09-AFC-7C) and find more information about the project and proceedings, please visit the project website: <http://www.energy.ca.gov/sitingcases/palen>. Please consider reviewing the above referenced project information so that we can promptly proceed to meaningful dialogue that matches the pace of the project compliance process. Staff anticipates publishing its Preliminary Staff Assessment on the petition in May 2013. Staff will be following up this letter with phone calls to ascertain the tribe's level of interest. The Energy Commission staff looks forward to your comments or questions. If you would like to talk with staff about concerns regarding impacts that Palen Solar Power Plant modifications could have on resources of concern to the Tribe or arrange a meeting, please contact Thomas Gates at (916) 654-5008; Fax: (916) 651-8868; or thomas.gates@energy.ca.gov.

Sincerely,

ROGER E. JOHNSON
Deputy Director

Siting, Transmission and Environmental Protection Division
Energy Commission Tribal Liaison

Enclosures: Site Vicinity Map
PSEGS Facility Boundary Map

CALIFORNIA ENERGY COMMISSION

1516 NINTH STREET
SACRAMENTO, CA 95814-5512
www.energy.ca.gov



April 3, 2013

Honorable Mary Resvaloso, Chairwoman
Torres-Martinez Desert Cahuilla Indians
P.O. Box 1160
Thermal, CA 92274

RE: Palen Solar Electric Generating System (09-AFC-7C) - Invitation to Participate in California Energy Commission Project Review/ Tribal Consultation

Dear Chairwoman Resvaloso,

Your name was provided to the California Energy Commission (Energy Commission) by the Bureau of Land Management (BLM), as a representative of a Native American community who might be interested in the change in the design of the Palen Solar Power Project. The project is proposed to be located on 3,794 acres of BLM land in Riverside County, California and is located approximately ¼ mile north of Interstate 10 near the Corn Springs Road exit, ten miles east of Desert Center and approximately halfway between the cities of Indio and Blythe. This letter provides general information concerning the project design changes, includes attached exhibits depicting the vicinity and project site location, and invites the tribe to participate in Energy Commission consultations with affiliated tribes

On December 17, 2012, Palen Solar Holdings, LLC (PSH) filed a Petition to Amend with the Energy Commission requesting to modify the Palen Solar Power Project. The project, as licensed on December 15, 2010 by the Energy Commission, is a 500-megawatt (MW) solar thermal power generating facility utilizing parabolic trough technology. In the 2012 petition, PSH proposes changes to the approved site layout and technology associated with the approved project. PSH proposes to use solar tower technology. Heliostats, elevated mirrors mounted on a pylon guided by a tracking system, will be used to focus the sun's rays on a solar receiver steam generator (SRSG) located atop a 750-foot tall solar tower near the center of each of two solar fields, to create steam. The modified project, which is named the Palen Solar Electric Generating System (PSEGS), will be comprised of two adjacent solar fields and associated facilities with a total combined nominal output of approximately 500 MW. PSH proposes to develop PSEGS in two operational phases: each phase will consist of one solar field and power block with approximately 250 MW of generation capacity. Each solar field will have an array of approximately 85,000 heliostats for a total of 170,000 heliostats for the project. Each phase will also share common facilities, including a common area containing an administration building, warehouse, evaporation ponds, maintenance complex and a meter/valve station for incoming natural gas service to the site, an onsite switchyard, and a single-circuit 230 kV generation tie-line to deliver power to the electricity grid. Other onsite facilities will include access and maintenance

April 3, 2013

Page 2

roads (either dirt, gravel or paved), perimeter fencing, tortoise fencing and other ancillary security facilities. PSH does not propose to change the generating capacity of the Energy Commission-approved project, the site access, or the interconnection point at Red Bluff Substation, although there will be a slight re-routing of the generation tie-line near the western end of the route and around Southern California Edison's newly constructed Red Bluff Substation. In addition to approval from the Energy Commission, the amended project will require BLM to complete an environmental review and grant a right-of-way lease.

Over the coming months, the Energy Commission will be holding a number of public workshops and hearings on the proposal to determine whether the modified project should be approved for construction and operation and under what set of conditions. These workshops and hearings will provide the public and tribes, as well as local, state and federal agencies, the opportunity to ask questions about, and provide input on, the proposed modifications. The Energy Commission will issue notices for these workshops and hearings at least 10 days prior to the meeting. If you want to be notified by e-mail whenever a public meeting is scheduled or a document is posted to the project website, you can sign up for the project list server on the web page. Public notices can also be sent to you by mail at your request. Should the Tribe request, Energy Commission staff will arrange for a separate meeting to discuss issues that the Tribe may wish to hold in confidence from the general public.

To view a copy of the Petition to Amend for this compliance proceeding (09-AFC-7C) and find more information about the project and proceedings, please visit the project website: <http://www.energy.ca.gov/sitingcases/palen>. Please consider reviewing the above referenced project information so that we can promptly proceed to meaningful dialogue that matches the pace of the project compliance process. Staff anticipates publishing its Preliminary Staff Assessment on the petition in May 2013. Staff will be following up this letter with phone calls to ascertain the tribe's level of interest. The Energy Commission staff looks forward to your comments or questions. If you would like to talk with staff about concerns regarding impacts that Palen Solar Power Plant modifications could have on resources of concern to the Tribe or arrange a meeting, please contact Thomas Gates at (916) 654-5008; Fax: (916) 651-8868; or thomas.gates@energy.ca.gov.

Sincerely,

ROGER E. JOHNSON
Deputy Director

Siting, Transmission and Environmental Protection Division
Energy Commission Tribal Liaison

Enclosures: Site Vicinity Map
PSEGS Facility Boundary Map

CALIFORNIA ENERGY COMMISSION

1516 NINTH STREET
SACRAMENTO, CA 95814-5512
www.energy.ca.gov



April 3, 2013

David Saldivar
Environmental Department
Augustine Band of Cahuilla Indians
84-001 Avenue 54
Coachella, CA 92236

RE: Palen Solar Electric Generating System (09-AFC-7C) - Invitation to Participate in California Energy Commission Project Review/ Tribal Consultation

Dear Mr. Saldivar,

Your name was provided to the California Energy Commission (Energy Commission) by the Bureau of Land Management (BLM), as a representative of a Native American community who might be interested in the change in the design of the Palen Solar Power Project. The project is proposed to be located on 3,794 acres of BLM land in Riverside County, California and is located approximately ¼ mile north of Interstate 10 near the Corn Springs Road exit, ten miles east of Desert Center and approximately halfway between the cities of Indio and Blythe. This letter provides general information concerning the project design changes, includes attached exhibits depicting the vicinity and project site location, and invites the tribe to participate in Energy Commission consultations with affiliated tribes

On December 17, 2012, Palen Solar Holdings, LLC (PSH) filed a Petition to Amend with the Energy Commission requesting to modify the Palen Solar Power Project. The project, as licensed on December 15, 2010 by the Energy Commission, is a 500-megawatt (MW) solar thermal power generating facility utilizing parabolic trough technology. In the 2012 petition, PSH proposes changes to the approved site layout and technology associated with the approved project. PSH proposes to use solar tower technology. Heliostats, elevated mirrors mounted on a pylon guided by a tracking system, will be used to focus the sun's rays on a solar receiver steam generator (SRSG) located atop a 750-foot tall solar tower near the center of each of two solar fields, to create steam. The modified project, which is named the Palen Solar Electric Generating System (PSEGS), will be comprised of two adjacent solar fields and associated facilities with a total combined nominal output of approximately 500 MW. PSH proposes to develop PSEGS in two operational phases: each phase will consist of one solar field and power block with approximately 250 MW of generation capacity. Each solar field will have an array of approximately 85,000 heliostats for a total of 170,000 heliostats for the project. Each phase will also share common facilities, including a common area containing an administration building, warehouse, evaporation ponds, maintenance complex and a meter/valve station for incoming natural gas service to the site, an onsite switchyard, and a single-circuit 230 kV generation tie-line to deliver power to the electricity grid. Other onsite facilities will include access and maintenance

April 3, 2013

Page 2

roads (either dirt, gravel or paved), perimeter fencing, tortoise fencing and other ancillary security facilities. PSH does not propose to change the generating capacity of the Energy Commission-approved project, the site access, or the interconnection point at Red Bluff Substation, although there will be a slight re-routing of the generation tie-line near the western end of the route and around Southern California Edison's newly constructed Red Bluff Substation. In addition to approval from the Energy Commission, the amended project will require BLM to complete an environmental review and grant a right-of-way lease.

Over the coming months, the Energy Commission will be holding a number of public workshops and hearings on the proposal to determine whether the modified project should be approved for construction and operation and under what set of conditions. These workshops and hearings will provide the public and tribes, as well as local, state and federal agencies, the opportunity to ask questions about, and provide input on, the proposed modifications. The Energy Commission will issue notices for these workshops and hearings at least 10 days prior to the meeting. If you want to be notified by e-mail whenever a public meeting is scheduled or a document is posted to the project website, you can sign up for the project list server on the web page. Public notices can also be sent to you by mail at your request. Should the Tribe request, Energy Commission staff will arrange for a separate meeting to discuss issues that the Tribe may wish to hold in confidence from the general public.

To view a copy of the Petition to Amend for this compliance proceeding (09-AFC-7C) and find more information about the project and proceedings, please visit the project website: <http://www.energy.ca.gov/sitingcases/palen>. Please consider reviewing the above referenced project information so that we can promptly proceed to meaningful dialogue that matches the pace of the project compliance process. Staff anticipates publishing its Preliminary Staff Assessment on the petition in May 2013. Staff will be following up this letter with phone calls to ascertain the tribe's level of interest. The Energy Commission staff looks forward to your comments or questions. If you would like to talk with staff about concerns regarding impacts that Palen Solar Power Plant modifications could have on resources of concern to the Tribe or arrange a meeting, please contact Thomas Gates at (916) 654-5008; Fax: (916) 651-8868; or thomas.gates@energy.ca.gov.

Sincerely,

ROGER E. JOHNSON
Deputy Director

Siting, Transmission and Environmental Protection Division
Energy Commission Tribal Liaison

Enclosures: Site Vicinity Map
PSEGS Facility Boundary Map

CALIFORNIA ENERGY COMMISSION

1516 NINTH STREET
SACRAMENTO, CA 95814-5512
www.energy.ca.gov



April 3, 2013

Judy Stapp, Director of Cultural Affairs
Cabazon Band of Mission Indians
84-245 Indio Springs Parkway
Indio, CA 92203-3499

RE: Palen Solar Electric Generating System (09-AFC-7C) - Invitation to Participate in California Energy Commission Project Review/ Tribal Consultation

Dear Ms. Stapp,

Your name was provided to the California Energy Commission (Energy Commission) by the Bureau of Land Management (BLM), as a representative of a Native American community who might be interested in the change in the design of the Palen Solar Power Project. The project is proposed to be located on 3,794 acres of BLM land in Riverside County, California and is located approximately ¼ mile north of Interstate 10 near the Corn Springs Road exit, ten miles east of Desert Center and approximately halfway between the cities of Indio and Blythe. This letter provides general information concerning the project design changes, includes attached exhibits depicting the vicinity and project site location, and invites the tribe to participate in Energy Commission consultations with affiliated tribes

On December 17, 2012, Palen Solar Holdings, LLC (PSH) filed a Petition to Amend with the Energy Commission requesting to modify the Palen Solar Power Project. The project, as licensed on December 15, 2010 by the Energy Commission, is a 500-megawatt (MW) solar thermal power generating facility utilizing parabolic trough technology. In the 2012 petition, PSH proposes changes to the approved site layout and technology associated with the approved project. PSH proposes to use solar tower technology. Heliostats, elevated mirrors mounted on a pylon guided by a tracking system, will be used to focus the sun's rays on a solar receiver steam generator (SRSG) located atop a 750-foot tall solar tower near the center of each of two solar fields, to create steam. The modified project, which is named the Palen Solar Electric Generating System (PSEGS), will be comprised of two adjacent solar fields and associated facilities with a total combined nominal output of approximately 500 MW. PSH proposes to develop PSEGS in two operational phases: each phase will consist of one solar field and power block with approximately 250 MW of generation capacity. Each solar field will have an array of approximately 85,000 heliostats for a total of 170,000 heliostats for the project. Each phase will also share common facilities, including a common area containing an administration building, warehouse, evaporation ponds, maintenance complex and a meter/valve station for incoming natural gas service to the site, an onsite switchyard, and a single-circuit 230 kV generation tie-line to deliver power to the electricity grid. Other onsite facilities will include access and maintenance

April 3, 2013

Page 2

roads (either dirt, gravel or paved), perimeter fencing, tortoise fencing and other ancillary security facilities. PSH does not propose to change the generating capacity of the Energy Commission-approved project, the site access, or the interconnection point at Red Bluff Substation, although there will be a slight re-routing of the generation tie-line near the western end of the route and around Southern California Edison's newly constructed Red Bluff Substation. In addition to approval from the Energy Commission, the amended project will require BLM to complete an environmental review and grant a right-of-way lease.

Over the coming months, the Energy Commission will be holding a number of public workshops and hearings on the proposal to determine whether the modified project should be approved for construction and operation and under what set of conditions. These workshops and hearings will provide the public and tribes, as well as local, state and federal agencies, the opportunity to ask questions about, and provide input on, the proposed modifications. The Energy Commission will issue notices for these workshops and hearings at least 10 days prior to the meeting. If you want to be notified by e-mail whenever a public meeting is scheduled or a document is posted to the project website, you can sign up for the project list server on the web page. Public notices can also be sent to you by mail at your request. Should the Tribe request, Energy Commission staff will arrange for a separate meeting to discuss issues that the Tribe may wish to hold in confidence from the general public.

To view a copy of the Petition to Amend for this compliance proceeding (09-AFC-7C) and find more information about the project and proceedings, please visit the project website: <http://www.energy.ca.gov/sitingcases/palen>. Please consider reviewing the above referenced project information so that we can promptly proceed to meaningful dialogue that matches the pace of the project compliance process. Staff anticipates publishing its Preliminary Staff Assessment on the petition in May 2013. Staff will be following up this letter with phone calls to ascertain the tribe's level of interest. The Energy Commission staff looks forward to your comments or questions. If you would like to talk with staff about concerns regarding impacts that Palen Solar Power Plant modifications could have on resources of concern to the Tribe or arrange a meeting, please contact Thomas Gates at (916) 654-5008; Fax: (916) 651-8868; or thomas.gates@energy.ca.gov.

Sincerely,

ROGER E. JOHNSON
Deputy Director

Siting, Transmission and Environmental Protection Division
Energy Commission Tribal Liaison

Enclosures: Site Vicinity Map
PSEGS Facility Boundary Map

CALIFORNIA ENERGY COMMISSION

1516 NINTH STREET
SACRAMENTO, CA 95814-5512
www.energy.ca.gov



April 3, 2013

Mike Jackson
Environmental Department
Cabazon Band of Mission Indians
84-245 Indio Springs Parkway
Indio, CA 92203-3499

RE: Palen Solar Electric Generating System (09-AFC-7C) - Invitation to Participate in California Energy Commission Project Review/ Tribal Consultation

Dear Mr. Jackson,

Your name was provided to the California Energy Commission (Energy Commission) by the Bureau of Land Management (BLM), as a representative of a Native American community who might be interested in the change in the design of the Palen Solar Power Project. The project is proposed to be located on 3,794 acres of BLM land in Riverside County, California and is located approximately ¼ mile north of Interstate 10 near the Corn Springs Road exit, ten miles east of Desert Center and approximately halfway between the cities of Indio and Blythe. This letter provides general information concerning the project design changes, includes attached exhibits depicting the vicinity and project site location, and invites the tribe to participate in Energy Commission consultations with affiliated tribes

On December 17, 2012, Palen Solar Holdings, LLC (PSH) filed a Petition to Amend with the Energy Commission requesting to modify the Palen Solar Power Project. The project, as licensed on December 15, 2010 by the Energy Commission, is a 500-megawatt (MW) solar thermal power generating facility utilizing parabolic trough technology. In the 2012 petition, PSH proposes changes to the approved site layout and technology associated with the approved project. PSH proposes to use solar tower technology. Heliostats, elevated mirrors mounted on a pylon guided by a tracking system, will be used to focus the sun's rays on a solar receiver steam generator (SRSG) located atop a 750-foot tall solar tower near the center of each of two solar fields, to create steam. The modified project, which is named the Palen Solar Electric Generating System (PSEGS), will be comprised of two adjacent solar fields and associated facilities with a total combined nominal output of approximately 500 MW. PSH proposes to develop PSEGS in two operational phases: each phase will consist of one solar field and power block with approximately 250 MW of generation capacity. Each solar field will have an array of approximately 85,000 heliostats for a total of 170,000 heliostats for the project. Each phase will also share common facilities, including a common area containing an administration building, warehouse, evaporation ponds, maintenance complex and a meter/valve station for incoming natural gas service to the site, an onsite switchyard, and a single-circuit 230 kV generation tie-line to deliver power to the electricity grid. Other onsite facilities will include access and maintenance

April 3, 2013

Page 2

roads (either dirt, gravel or paved), perimeter fencing, tortoise fencing and other ancillary security facilities. PSH does not propose to change the generating capacity of the Energy Commission-approved project, the site access, or the interconnection point at Red Bluff Substation, although there will be a slight re-routing of the generation tie-line near the western end of the route and around Southern California Edison's newly constructed Red Bluff Substation. In addition to approval from the Energy Commission, the amended project will require BLM to complete an environmental review and grant a right-of-way lease.

Over the coming months, the Energy Commission will be holding a number of public workshops and hearings on the proposal to determine whether the modified project should be approved for construction and operation and under what set of conditions. These workshops and hearings will provide the public and tribes, as well as local, state and federal agencies, the opportunity to ask questions about, and provide input on, the proposed modifications. The Energy Commission will issue notices for these workshops and hearings at least 10 days prior to the meeting. If you want to be notified by e-mail whenever a public meeting is scheduled or a document is posted to the project website, you can sign up for the project list server on the web page. Public notices can also be sent to you by mail at your request. Should the Tribe request, Energy Commission staff will arrange for a separate meeting to discuss issues that the Tribe may wish to hold in confidence from the general public.

To view a copy of the Petition to Amend for this compliance proceeding (09-AFC-7C) and find more information about the project and proceedings, please visit the project website: <http://www.energy.ca.gov/sitingcases/palen>. Please consider reviewing the above referenced project information so that we can promptly proceed to meaningful dialogue that matches the pace of the project compliance process. Staff anticipates publishing its Preliminary Staff Assessment on the petition in May 2013. Staff will be following up this letter with phone calls to ascertain the tribe's level of interest. The Energy Commission staff looks forward to your comments or questions. If you would like to talk with staff about concerns regarding impacts that Palen Solar Power Plant modifications could have on resources of concern to the Tribe or arrange a meeting, please contact Thomas Gates at (916) 654-5008; Fax: (916) 651-8868; or thomas.gates@energy.ca.gov.

Sincerely,

ROGER E. JOHNSON
Deputy Director

Siting, Transmission and Environmental Protection Division
Energy Commission Tribal Liaison

Enclosures: Site Vicinity Map
PSEGS Facility Boundary Map

CALIFORNIA ENERGY COMMISSION

1516 NINTH STREET
SACRAMENTO, CA 95814-5512
www.energy.ca.gov



April 3, 2013

Luther Salgado, Jr., Environmental Director
Cahuilla Band of Mission Indians
P.O. Box 391741
Anza, CA 92539

RE: Palen Solar Electric Generating System (09-AFC-7C) - Invitation to Participate in California Energy Commission Project Review/ Tribal Consultation

Dear Mr. Salgado,

Your name was provided to the California Energy Commission (Energy Commission) by the Bureau of Land Management (BLM), as a representative of a Native American community who might be interested in the change in the design of the Palen Solar Power Project. The project is proposed to be located on 3,794 acres of BLM land in Riverside County, California and is located approximately ¼ mile north of Interstate 10 near the Corn Springs Road exit, ten miles east of Desert Center and approximately halfway between the cities of Indio and Blythe. This letter provides general information concerning the project design changes, includes attached exhibits depicting the vicinity and project site location, and invites the tribe to participate in Energy Commission consultations with affiliated tribes

On December 17, 2012, Palen Solar Holdings, LLC (PSH) filed a Petition to Amend with the Energy Commission requesting to modify the Palen Solar Power Project. The project, as licensed on December 15, 2010 by the Energy Commission, is a 500-megawatt (MW) solar thermal power generating facility utilizing parabolic trough technology. In the 2012 petition, PSH proposes changes to the approved site layout and technology associated with the approved project. PSH proposes to use solar tower technology. Heliostats, elevated mirrors mounted on a pylon guided by a tracking system, will be used to focus the sun's rays on a solar receiver steam generator (SRSG) located atop a 750-foot tall solar tower near the center of each of two solar fields, to create steam. The modified project, which is named the Palen Solar Electric Generating System (PSEGS), will be comprised of two adjacent solar fields and associated facilities with a total combined nominal output of approximately 500 MW. PSH proposes to develop PSEGS in two operational phases: each phase will consist of one solar field and power block with approximately 250 MW of generation capacity. Each solar field will have an array of approximately 85,000 heliostats for a total of 170,000 heliostats for the project. Each phase will also share common facilities, including a common area containing an administration building, warehouse, evaporation ponds, maintenance complex and a meter/valve station for incoming natural gas service to the site, an onsite switchyard, and a single-circuit 230 kV generation tie-line to deliver power to the electricity grid. Other onsite facilities will include access and maintenance

April 3, 2013

Page 2

roads (either dirt, gravel or paved), perimeter fencing, tortoise fencing and other ancillary security facilities. PSH does not propose to change the generating capacity of the Energy Commission-approved project, the site access, or the interconnection point at Red Bluff Substation, although there will be a slight re-routing of the generation tie-line near the western end of the route and around Southern California Edison's newly constructed Red Bluff Substation. In addition to approval from the Energy Commission, the amended project will require BLM to complete an environmental review and grant a right-of-way lease.

Over the coming months, the Energy Commission will be holding a number of public workshops and hearings on the proposal to determine whether the modified project should be approved for construction and operation and under what set of conditions. These workshops and hearings will provide the public and tribes, as well as local, state and federal agencies, the opportunity to ask questions about, and provide input on, the proposed modifications. The Energy Commission will issue notices for these workshops and hearings at least 10 days prior to the meeting. If you want to be notified by e-mail whenever a public meeting is scheduled or a document is posted to the project website, you can sign up for the project list server on the web page. Public notices can also be sent to you by mail at your request. Should the Tribe request, Energy Commission staff will arrange for a separate meeting to discuss issues that the Tribe may wish to hold in confidence from the general public.

To view a copy of the Petition to Amend for this compliance proceeding (09-AFC-7C) and find more information about the project and proceedings, please visit the project website: <http://www.energy.ca.gov/sitingcases/palen>. Please consider reviewing the above referenced project information so that we can promptly proceed to meaningful dialogue that matches the pace of the project compliance process. Staff anticipates publishing its Preliminary Staff Assessment on the petition in May 2013. Staff will be following up this letter with phone calls to ascertain the tribe's level of interest. The Energy Commission staff looks forward to your comments or questions. If you would like to talk with staff about concerns regarding impacts that Palen Solar Power Plant modifications could have on resources of concern to the Tribe or arrange a meeting, please contact Thomas Gates at (916) 654-5008; Fax: (916) 651-8868; or thomas.gates@energy.ca.gov.

Sincerely,

ROGER E. JOHNSON
Deputy Director

Siting, Transmission and Environmental Protection Division
Energy Commission Tribal Liaison

Enclosures: Site Vicinity Map
PSEGS Facility Boundary Map

CALIFORNIA ENERGY COMMISSION

1516 NINTH STREET
SACRAMENTO, CA 95814-5512
www.energy.ca.gov



April 3, 2013

William Madrigal
Cultural Heritage Program Coordinator
Morongo Band of Mission Indians
127 Pumarra Road
Banning, CA 92222

RE: Palen Solar Electric Generating System (09-AFC-7C) - Invitation to Participate in California Energy Commission Project Review/ Tribal Consultation

Dear Mr. Madrigal,

Your name was provided to the California Energy Commission (Energy Commission) by the Bureau of Land Management (BLM), as a representative of a Native American community who might be interested in the change in the design of the Palen Solar Power Project. The project is proposed to be located on 3,794 acres of BLM land in Riverside County, California and is located approximately ¼ mile north of Interstate 10 near the Corn Springs Road exit, ten miles east of Desert Center and approximately halfway between the cities of Indio and Blythe. This letter provides general information concerning the project design changes, includes attached exhibits depicting the vicinity and project site location, and invites the tribe to participate in Energy Commission consultations with affiliated tribes

On December 17, 2012, Palen Solar Holdings, LLC (PSH) filed a Petition to Amend with the Energy Commission requesting to modify the Palen Solar Power Project. The project, as licensed on December 15, 2010 by the Energy Commission, is a 500-megawatt (MW) solar thermal power generating facility utilizing parabolic trough technology. In the 2012 petition, PSH proposes changes to the approved site layout and technology associated with the approved project. PSH proposes to use solar tower technology. Heliostats, elevated mirrors mounted on a pylon guided by a tracking system, will be used to focus the sun's rays on a solar receiver steam generator (SRSG) located atop a 750-foot tall solar tower near the center of each of two solar fields, to create steam. The modified project, which is named the Palen Solar Electric Generating System (PSEGS), will be comprised of two adjacent solar fields and associated facilities with a total combined nominal output of approximately 500 MW. PSH proposes to develop PSEGS in two operational phases: each phase will consist of one solar field and power block with approximately 250 MW of generation capacity. Each solar field will have an array of approximately 85,000 heliostats for a total of 170,000 heliostats for the project. Each phase will also share common facilities, including a common area containing an administration building, warehouse, evaporation ponds, maintenance complex and a meter/valve station for incoming natural gas service to the site, an onsite switchyard, and a single-circuit 230 kV generation tie-line to deliver power to the electricity grid. Other onsite facilities will include access and maintenance

April 3, 2013

Page 2

roads (either dirt, gravel or paved), perimeter fencing, tortoise fencing and other ancillary security facilities. PSH does not propose to change the generating capacity of the Energy Commission-approved project, the site access, or the interconnection point at Red Bluff Substation, although there will be a slight re-routing of the generation tie-line near the western end of the route and around Southern California Edison's newly constructed Red Bluff Substation. In addition to approval from the Energy Commission, the amended project will require BLM to complete an environmental review and grant a right-of-way lease.

Over the coming months, the Energy Commission will be holding a number of public workshops and hearings on the proposal to determine whether the modified project should be approved for construction and operation and under what set of conditions. These workshops and hearings will provide the public and tribes, as well as local, state and federal agencies, the opportunity to ask questions about, and provide input on, the proposed modifications. The Energy Commission will issue notices for these workshops and hearings at least 10 days prior to the meeting. If you want to be notified by e-mail whenever a public meeting is scheduled or a document is posted to the project website, you can sign up for the project list server on the web page. Public notices can also be sent to you by mail at your request. Should the Tribe request, Energy Commission staff will arrange for a separate meeting to discuss issues that the Tribe may wish to hold in confidence from the general public.

To view a copy of the Petition to Amend for this compliance proceeding (09-AFC-7C) and find more information about the project and proceedings, please visit the project website: <http://www.energy.ca.gov/sitingcases/palen>. Please consider reviewing the above referenced project information so that we can promptly proceed to meaningful dialogue that matches the pace of the project compliance process. Staff anticipates publishing its Preliminary Staff Assessment on the petition in May 2013. Staff will be following up this letter with phone calls to ascertain the tribe's level of interest. The Energy Commission staff looks forward to your comments or questions. If you would like to talk with staff about concerns regarding impacts that Palen Solar Power Plant modifications could have on resources of concern to the Tribe or arrange a meeting, please contact Thomas Gates at (916) 654-5008; Fax: (916) 651-8868; or thomas.gates@energy.ca.gov.

Sincerely,

ROGER E. JOHNSON
Deputy Director

Siting, Transmission and Environmental Protection Division
Energy Commission Tribal Liaison

Enclosures: Site Vicinity Map
PSEGS Facility Boundary Map

CALIFORNIA ENERGY COMMISSION

1516 NINTH STREET
SACRAMENTO, CA 95814-5512
www.energy.ca.gov



April 3, 2013

John Gomez, Jr.
Cultural Resources
Ramona Band of Mission Indians
56310 Highway 371, Suite B
Anza, CA 92539

RE: Palen Solar Electric Generating System (09-AFC-7C) - Invitation to Participate in California Energy Commission Project Review/ Tribal Consultation

Dear Mr. Gomez,

Your name was provided to the California Energy Commission (Energy Commission) by the Bureau of Land Management (BLM), as a representative of a Native American community who might be interested in the change in the design of the Palen Solar Power Project. The project is proposed to be located on 3,794 acres of BLM land in Riverside County, California and is located approximately ¼ mile north of Interstate 10 near the Corn Springs Road exit, ten miles east of Desert Center and approximately halfway between the cities of Indio and Blythe. This letter provides general information concerning the project design changes, includes attached exhibits depicting the vicinity and project site location, and invites the tribe to participate in Energy Commission consultations with affiliated tribes

On December 17, 2012, Palen Solar Holdings, LLC (PSH) filed a Petition to Amend with the Energy Commission requesting to modify the Palen Solar Power Project. The project, as licensed on December 15, 2010 by the Energy Commission, is a 500-megawatt (MW) solar thermal power generating facility utilizing parabolic trough technology. In the 2012 petition, PSH proposes changes to the approved site layout and technology associated with the approved project. PSH proposes to use solar tower technology. Heliostats, elevated mirrors mounted on a pylon guided by a tracking system, will be used to focus the sun's rays on a solar receiver steam generator (SRSG) located atop a 750-foot tall solar tower near the center of each of two solar fields, to create steam. The modified project, which is named the Palen Solar Electric Generating System (PSEGS), will be comprised of two adjacent solar fields and associated facilities with a total combined nominal output of approximately 500 MW. PSH proposes to develop PSEGS in two operational phases: each phase will consist of one solar field and power block with approximately 250 MW of generation capacity. Each solar field will have an array of approximately 85,000 heliostats for a total of 170,000 heliostats for the project. Each phase will also share common facilities, including a common area containing an administration building, warehouse, evaporation ponds, maintenance complex and a meter/valve station for incoming natural gas service to the site, an onsite switchyard, and a single-circuit 230 kV generation tie-line to deliver power to the electricity grid. Other onsite facilities will include access and maintenance

April 3, 2013

Page 2

roads (either dirt, gravel or paved), perimeter fencing, tortoise fencing and other ancillary security facilities. PSH does not propose to change the generating capacity of the Energy Commission-approved project, the site access, or the interconnection point at Red Bluff Substation, although there will be a slight re-routing of the generation tie-line near the western end of the route and around Southern California Edison's newly constructed Red Bluff Substation. In addition to approval from the Energy Commission, the amended project will require BLM to complete an environmental review and grant a right-of-way lease.

Over the coming months, the Energy Commission will be holding a number of public workshops and hearings on the proposal to determine whether the modified project should be approved for construction and operation and under what set of conditions. These workshops and hearings will provide the public and tribes, as well as local, state and federal agencies, the opportunity to ask questions about, and provide input on, the proposed modifications. The Energy Commission will issue notices for these workshops and hearings at least 10 days prior to the meeting. If you want to be notified by e-mail whenever a public meeting is scheduled or a document is posted to the project website, you can sign up for the project list server on the web page. Public notices can also be sent to you by mail at your request. Should the Tribe request, Energy Commission staff will arrange for a separate meeting to discuss issues that the Tribe may wish to hold in confidence from the general public.

To view a copy of the Petition to Amend for this compliance proceeding (09-AFC-7C) and find more information about the project and proceedings, please visit the project website: <http://www.energy.ca.gov/sitingcases/palen>. Please consider reviewing the above referenced project information so that we can promptly proceed to meaningful dialogue that matches the pace of the project compliance process. Staff anticipates publishing its Preliminary Staff Assessment on the petition in May 2013. Staff will be following up this letter with phone calls to ascertain the tribe's level of interest. The Energy Commission staff looks forward to your comments or questions. If you would like to talk with staff about concerns regarding impacts that Palen Solar Power Plant modifications could have on resources of concern to the Tribe or arrange a meeting, please contact Thomas Gates at (916) 654-5008; Fax: (916) 651-8868; or thomas.gates@energy.ca.gov.

Sincerely,

ROGER E. JOHNSON
Deputy Director

Siting, Transmission and Environmental Protection Division
Energy Commission Tribal Liaison

Enclosures: Site Vicinity Map
PSEGS Facility Boundary Map

CALIFORNIA ENERGY COMMISSION

1516 NINTH STREET
SACRAMENTO, CA 95814-5512
www.energy.ca.gov



April 3, 2013

Anthony Madrigal, Sr.
Director of Policy and CRM
San Manuel Band of Mission Indians
26569 Community Center Drive
Highland, CA 92346

RE: Palen Solar Electric Generating System (09-AFC-7C) - Invitation to Participate in California Energy Commission Project Review/Tribal Consultation

Dear Mr. Madrigal,

Your name was provided to the California Energy Commission (Energy Commission) by the Bureau of Land Management (BLM), as a representative of a Native American community who might be interested in the change in the design of the Palen Solar Power Project. The project is proposed to be located on 3,794 acres of BLM land in Riverside County, California and is located approximately ¼ mile north of Interstate 10 near the Corn Springs Road exit, ten miles east of Desert Center and approximately halfway between the cities of Indio and Blythe. This letter provides general information concerning the project design changes, includes attached exhibits depicting the vicinity and project site location, and invites the tribe to participate in Energy Commission consultations with affiliated tribes

On December 17, 2012, Palen Solar Holdings, LLC (PSH) filed a Petition to Amend with the Energy Commission requesting to modify the Palen Solar Power Project. The project, as licensed on December 15, 2010 by the Energy Commission, is a 500-megawatt (MW) solar thermal power generating facility utilizing parabolic trough technology. In the 2012 petition, PSH proposes changes to the approved site layout and technology associated with the approved project. PSH proposes to use solar tower technology. Heliostats, elevated mirrors mounted on a pylon guided by a tracking system, will be used to focus the sun's rays on a solar receiver steam generator (SRSG) located atop a 750-foot tall solar tower near the center of each of two solar fields, to create steam. The modified project, which is named the Palen Solar Electric Generating System (PSEGS), will be comprised of two adjacent solar fields and associated facilities with a total combined nominal output of approximately 500 MW. PSH proposes to develop PSEGS in two operational phases: each phase will consist of one solar field and power block with approximately 250 MW of generation capacity. Each solar field will have an array of approximately 85,000 heliostats for a total of 170,000 heliostats for the project. Each phase will also share common facilities, including a common area containing an administration building, warehouse, evaporation ponds, maintenance complex and a meter/valve station for incoming natural gas service to the site, an onsite switchyard, and a single-circuit 230 kV generation tie-line to deliver power to the electricity grid. Other onsite facilities will include access and maintenance

April 3, 2013

Page 2

roads (either dirt, gravel or paved), perimeter fencing, tortoise fencing and other ancillary security facilities. PSH does not propose to change the generating capacity of the Energy Commission-approved project, the site access, or the interconnection point at Red Bluff Substation, although there will be a slight re-routing of the generation tie-line near the western end of the route and around Southern California Edison's newly constructed Red Bluff Substation. In addition to approval from the Energy Commission, the amended project will require BLM to complete an environmental review and grant a right-of-way lease.

Over the coming months, the Energy Commission will be holding a number of public workshops and hearings on the proposal to determine whether the modified project should be approved for construction and operation and under what set of conditions. These workshops and hearings will provide the public and tribes, as well as local, state and federal agencies, the opportunity to ask questions about, and provide input on, the proposed modifications. The Energy Commission will issue notices for these workshops and hearings at least 10 days prior to the meeting. If you want to be notified by e-mail whenever a public meeting is scheduled or a document is posted to the project website, you can sign up for the project list server on the web page. Public notices can also be sent to you by mail at your request. Should the Tribe request, Energy Commission staff will arrange for a separate meeting to discuss issues that the Tribe may wish to hold in confidence from the general public.

To view a copy of the Petition to Amend for this compliance proceeding (09-AFC-7C) and find more information about the project and proceedings, please visit the project website: <http://www.energy.ca.gov/sitingcases/palen>. Please consider reviewing the above referenced project information so that we can promptly proceed to meaningful dialogue that matches the pace of the project compliance process. Staff anticipates publishing its Preliminary Staff Assessment on the petition in May 2013. Staff will be following up this letter with phone calls to ascertain the tribe's level of interest. The Energy Commission staff looks forward to your comments or questions. If you would like to talk with staff about concerns regarding impacts that Palen Solar Power Plant modifications could have on resources of concern to the Tribe or arrange a meeting, please contact Thomas Gates at (916) 654-5008; Fax: (916) 651-8868; or thomas.gates@energy.ca.gov.

Sincerely,

ROGER E. JOHNSON
Deputy Director

Siting, Transmission and Environmental Protection Division
Energy Commission Tribal Liaison

Enclosures: Site Vicinity Map
PSEGS Facility Boundary Map

CALIFORNIA ENERGY COMMISSION

1516 NINTH STREET
SACRAMENTO, CA 95814-5512
www.energy.ca.gov



April 3, 2013

Joseph Ontiveros
Cultural Resources Department
Soboba Band of Luiseno Indians
P.O. Box 487
San Jacinto, CA 92581

RE: Palen Solar Electric Generating System (09-AFC-7C) - Invitation to Participate in California Energy Commission Project Review/Tribal Consultation

Dear Mr. Ontiveros,

Your name was provided to the California Energy Commission (Energy Commission) by the Bureau of Land Management (BLM), as a representative of a Native American community who might be interested in the change in the design of the Palen Solar Power Project. The project is proposed to be located on 3,794 acres of BLM land in Riverside County, California and is located approximately ¼ mile north of Interstate 10 near the Corn Springs Road exit, ten miles east of Desert Center and approximately halfway between the cities of Indio and Blythe. This letter provides general information concerning the project design changes, includes attached exhibits depicting the vicinity and project site location, and invites the tribe to participate in Energy Commission consultations with affiliated tribes

On December 17, 2012, Palen Solar Holdings, LLC (PSH) filed a Petition to Amend with the Energy Commission requesting to modify the Palen Solar Power Project. The project, as licensed on December 15, 2010 by the Energy Commission, is a 500-megawatt (MW) solar thermal power generating facility utilizing parabolic trough technology. In the 2012 petition, PSH proposes changes to the approved site layout and technology associated with the approved project. PSH proposes to use solar tower technology. Heliostats, elevated mirrors mounted on a pylon guided by a tracking system, will be used to focus the sun's rays on a solar receiver steam generator (SRSG) located atop a 750-foot tall solar tower near the center of each of two solar fields, to create steam. The modified project, which is named the Palen Solar Electric Generating System (PSEGS), will be comprised of two adjacent solar fields and associated facilities with a total combined nominal output of approximately 500 MW. PSH proposes to develop PSEGS in two operational phases: each phase will consist of one solar field and power block with approximately 250 MW of generation capacity. Each solar field will have an array of approximately 85,000 heliostats for a total of 170,000 heliostats for the project. Each phase will also share common facilities, including a common area containing an administration building, warehouse, evaporation ponds, maintenance complex and a meter/valve station for incoming natural gas service to the site, an onsite switchyard, and a single-circuit 230 kV generation tie-line to deliver power to the electricity grid. Other onsite facilities will include access and maintenance

April 3, 2013

Page 2

roads (either dirt, gravel or paved), perimeter fencing, tortoise fencing and other ancillary security facilities. PSH does not propose to change the generating capacity of the Energy Commission-approved project, the site access, or the interconnection point at Red Bluff Substation, although there will be a slight re-routing of the generation tie-line near the western end of the route and around Southern California Edison's newly constructed Red Bluff Substation. In addition to approval from the Energy Commission, the amended project will require BLM to complete an environmental review and grant a right-of-way lease.

Over the coming months, the Energy Commission will be holding a number of public workshops and hearings on the proposal to determine whether the modified project should be approved for construction and operation and under what set of conditions. These workshops and hearings will provide the public and tribes, as well as local, state and federal agencies, the opportunity to ask questions about, and provide input on, the proposed modifications. The Energy Commission will issue notices for these workshops and hearings at least 10 days prior to the meeting. If you want to be notified by e-mail whenever a public meeting is scheduled or a document is posted to the project website, you can sign up for the project list server on the web page. Public notices can also be sent to you by mail at your request. Should the Tribe request, Energy Commission staff will arrange for a separate meeting to discuss issues that the Tribe may wish to hold in confidence from the general public.

To view a copy of the Petition to Amend for this compliance proceeding (09-AFC-7C) and find more information about the project and proceedings, please visit the project website: <http://www.energy.ca.gov/sitingcases/palen>. Please consider reviewing the above referenced project information so that we can promptly proceed to meaningful dialogue that matches the pace of the project compliance process. Staff anticipates publishing its Preliminary Staff Assessment on the petition in May 2013. Staff will be following up this letter with phone calls to ascertain the tribe's level of interest. The Energy Commission staff looks forward to your comments or questions. If you would like to talk with staff about concerns regarding impacts that Palen Solar Power Plant modifications could have on resources of concern to the Tribe or arrange a meeting, please contact Thomas Gates at (916) 654-5008; Fax: (916) 651-8868; or thomas.gates@energy.ca.gov.

Sincerely,

ROGER E. JOHNSON
Deputy Director

Siting, Transmission and Environmental Protection Division
Energy Commission Tribal Liaison

Enclosures: Site Vicinity Map
PSEGS Facility Boundary Map

CALIFORNIA ENERGY COMMISSION

1516 NINTH STREET
SACRAMENTO, CA 95814-5512
www.energy.ca.gov



April 3, 2013

Mathew Krystall, Tribal Resources Manager
Torres-Martinez Desert Cahuilla Indians
P.O. Box 1160
Thermal, CA 92274

RE: Palen Solar Electric Generating System (09-AFC-7C) - Invitation to Participate in California Energy Commission Project Review/Tribal Consultation

Dear Mr. Krystall,

Your name was provided to the California Energy Commission (Energy Commission) by the Bureau of Land Management (BLM), as a representative of a Native American community who might be interested in the change in the design of the Palen Solar Power Project. The project is proposed to be located on 3,794 acres of BLM land in Riverside County, California and is located approximately ¼ mile north of Interstate 10 near the Corn Springs Road exit, ten miles east of Desert Center and approximately halfway between the cities of Indio and Blythe. This letter provides general information concerning the project design changes, includes attached exhibits depicting the vicinity and project site location, and invites the tribe to participate in Energy Commission consultations with affiliated tribes

On December 17, 2012, Palen Solar Holdings, LLC (PSH) filed a Petition to Amend with the Energy Commission requesting to modify the Palen Solar Power Project. The project, as licensed on December 15, 2010 by the Energy Commission, is a 500-megawatt (MW) solar thermal power generating facility utilizing parabolic trough technology. In the 2012 petition, PSH proposes changes to the approved site layout and technology associated with the approved project. PSH proposes to use solar tower technology. Heliostats, elevated mirrors mounted on a pylon guided by a tracking system, will be used to focus the sun's rays on a solar receiver steam generator (SRSG) located atop a 750-foot tall solar tower near the center of each of two solar fields, to create steam. The modified project, which is named the Palen Solar Electric Generating System (PSEGS), will be comprised of two adjacent solar fields and associated facilities with a total combined nominal output of approximately 500 MW. PSH proposes to develop PSEGS in two operational phases: each phase will consist of one solar field and power block with approximately 250 MW of generation capacity. Each solar field will have an array of approximately 85,000 heliostats for a total of 170,000 heliostats for the project. Each phase will also share common facilities, including a common area containing an administration building, warehouse, evaporation ponds, maintenance complex and a meter/valve station for incoming natural gas service to the site, an onsite switchyard, and a single-circuit 230 kV generation tie-line to deliver power to the electricity grid. Other onsite facilities will include access and maintenance

April 3, 2013

Page 2

roads (either dirt, gravel or paved), perimeter fencing, tortoise fencing and other ancillary security facilities. PSH does not propose to change the generating capacity of the Energy Commission-approved project, the site access, or the interconnection point at Red Bluff Substation, although there will be a slight re-routing of the generation tie-line near the western end of the route and around Southern California Edison's newly constructed Red Bluff Substation. In addition to approval from the Energy Commission, the amended project will require BLM to complete an environmental review and grant a right-of-way lease.

Over the coming months, the Energy Commission will be holding a number of public workshops and hearings on the proposal to determine whether the modified project should be approved for construction and operation and under what set of conditions. These workshops and hearings will provide the public and tribes, as well as local, state and federal agencies, the opportunity to ask questions about, and provide input on, the proposed modifications. The Energy Commission will issue notices for these workshops and hearings at least 10 days prior to the meeting. If you want to be notified by e-mail whenever a public meeting is scheduled or a document is posted to the project website, you can sign up for the project list server on the web page. Public notices can also be sent to you by mail at your request. Should the Tribe request, Energy Commission staff will arrange for a separate meeting to discuss issues that the Tribe may wish to hold in confidence from the general public.

To view a copy of the Petition to Amend for this compliance proceeding (09-AFC-7C) and find more information about the project and proceedings, please visit the project website: <http://www.energy.ca.gov/sitingcases/palen>. Please consider reviewing the above referenced project information so that we can promptly proceed to meaningful dialogue that matches the pace of the project compliance process. Staff anticipates publishing its Preliminary Staff Assessment on the petition in May 2013. Staff will be following up this letter with phone calls to ascertain the tribe's level of interest. The Energy Commission staff looks forward to your comments or questions. If you would like to talk with staff about concerns regarding impacts that Palen Solar Power Plant modifications could have on resources of concern to the Tribe or arrange a meeting, please contact Thomas Gates at (916) 654-5008; Fax: (916) 651-8868; or thomas.gates@energy.ca.gov.

Sincerely,

ROGER E. JOHNSON
Deputy Director

Siting, Transmission and Environmental Protection Division
Energy Commission Tribal Liaison

Enclosures: Site Vicinity Map
PSEGS Facility Boundary Map

CALIFORNIA ENERGY COMMISSION

1516 NINTH STREET
SACRAMENTO, CA 95814-5512
www.energy.ca.gov



April 3, 2013

Anthony Madrigal, Jr., Cultural Director
Twenty-Nine Palms Band of Mission Indians
47250 Dillon Road
Coachella, CA 92236

RE: Palen Solar Electric Generating System (09-AFC-7C) - Invitation to Participate in California Energy Commission Project Review/Tribal Consultation

Dear Mr. Madrigal,

Your name was provided to the California Energy Commission (Energy Commission) by the Bureau of Land Management (BLM), as a representative of a Native American community who might be interested in the change in the design of the Palen Solar Power Project. The project is proposed to be located on 3,794 acres of BLM land in Riverside County, California and is located approximately ¼ mile north of Interstate 10 near the Corn Springs Road exit, ten miles east of Desert Center and approximately halfway between the cities of Indio and Blythe. This letter provides general information concerning the project design changes, includes attached exhibits depicting the vicinity and project site location, and invites the tribe to participate in Energy Commission consultations with affiliated tribes

On December 17, 2012, Palen Solar Holdings, LLC (PSH) filed a Petition to Amend with the Energy Commission requesting to modify the Palen Solar Power Project. The project, as licensed on December 15, 2010 by the Energy Commission, is a 500-megawatt (MW) solar thermal power generating facility utilizing parabolic trough technology. In the 2012 petition, PSH proposes changes to the approved site layout and technology associated with the approved project. PSH proposes to use solar tower technology. Heliostats, elevated mirrors mounted on a pylon guided by a tracking system, will be used to focus the sun's rays on a solar receiver steam generator (SRSG) located atop a 750-foot tall solar tower near the center of each of two solar fields, to create steam. The modified project, which is named the Palen Solar Electric Generating System (PSEGS), will be comprised of two adjacent solar fields and associated facilities with a total combined nominal output of approximately 500 MW. PSH proposes to develop PSEGS in two operational phases: each phase will consist of one solar field and power block with approximately 250 MW of generation capacity. Each solar field will have an array of approximately 85,000 heliostats for a total of 170,000 heliostats for the project. Each phase will also share common facilities, including a common area containing an administration building, warehouse, evaporation ponds, maintenance complex and a meter/valve station for incoming natural gas service to the site, an onsite switchyard, and a single-circuit 230 kV generation tie-line to deliver power to the electricity grid. Other onsite facilities will include access and maintenance

April 3, 2013

Page 2

roads (either dirt, gravel or paved), perimeter fencing, tortoise fencing and other ancillary security facilities. PSH does not propose to change the generating capacity of the Energy Commission-approved project, the site access, or the interconnection point at Red Bluff Substation, although there will be a slight re-routing of the generation tie-line near the western end of the route and around Southern California Edison's newly constructed Red Bluff Substation. In addition to approval from the Energy Commission, the amended project will require BLM to complete an environmental review and grant a right-of-way lease.

Over the coming months, the Energy Commission will be holding a number of public workshops and hearings on the proposal to determine whether the modified project should be approved for construction and operation and under what set of conditions. These workshops and hearings will provide the public and tribes, as well as local, state and federal agencies, the opportunity to ask questions about, and provide input on, the proposed modifications. The Energy Commission will issue notices for these workshops and hearings at least 10 days prior to the meeting. If you want to be notified by e-mail whenever a public meeting is scheduled or a document is posted to the project website, you can sign up for the project list server on the web page. Public notices can also be sent to you by mail at your request. Should the Tribe request, Energy Commission staff will arrange for a separate meeting to discuss issues that the Tribe may wish to hold in confidence from the general public.

To view a copy of the Petition to Amend for this compliance proceeding (09-AFC-7C) and find more information about the project and proceedings, please visit the project website: <http://www.energy.ca.gov/sitingcases/palen>. Please consider reviewing the above referenced project information so that we can promptly proceed to meaningful dialogue that matches the pace of the project compliance process. Staff anticipates publishing its Preliminary Staff Assessment on the petition in May 2013. Staff will be following up this letter with phone calls to ascertain the tribe's level of interest. The Energy Commission staff looks forward to your comments or questions. If you would like to talk with staff about concerns regarding impacts that Palen Solar Power Plant modifications could have on resources of concern to the Tribe or arrange a meeting, please contact Thomas Gates at (916) 654-5008; Fax: (916) 651-8868; or thomas.gates@energy.ca.gov.

Sincerely,

ROGER E. JOHNSON
Deputy Director

Siting, Transmission and Environmental Protection Division
Energy Commission Tribal Liaison

Enclosures: Site Vicinity Map
PSEGS Facility Boundary Map