

# AGUA CALIENTE BAND OF CAHUILLA INDIANS

TRIBAL HISTORIC PRESERVATION



March 26, 2013

Thomas Gates  
California Energy Commission  
Siting, Transmission, & Environmental Protection Division  
1516 9th Street (MS-40)  
Sacramento, CA 95814-5512

California Energy Commission

**DOCKETED**  
**09-AFC-7C**

TN # 70274

APR. 11 2013

**RE: Palen Solar Energy Generating System (09-AFC-7C) - Invitation to Participate in California Energy Commission Tribal Consultation**

Dear Mr. Gates:

The Agua Caliente Band of Cahuilla Indians appreciates your efforts to include the Tribal Historic Preservation Office (THPO) in the Tribal Consultation process for your project. The proposed location is not within Reservation boundaries. However, it is on ancestral lands included within the Tribe's Traditional Use Area. I have searched our records and have identified previously recorded cultural resources and/or sacred place names in the project area and/ or in very close proximity to the project boundaries.

The THPO has requested to formally consult with the CEC on this project. We wish to be included in project information and meetings. Additionally, we have requested to formally consult with the BLM under Section 106 of the National Historic Preservation Act.

The THPO considers cumulative impacts to cultural resources, historic resources and historical resources along with Traditional Cultural Places, sacred places, gathering places, trails and all of the associated Cultural Landscapes immeasurable and unmitigatable. However, we request to be included on the development of the mitigation and treatment for impacts to Historic Properties and all other steps of the process for which determining significance for cultural resources impacted by this project.

In addition we have the following requests:

- 1- A list of proposed changes from the originally approved project
- 2- A map showing all of the proposed changes and the original project
- 3- Several archaeology maps:
  - a. 1<sup>st</sup> A map showing all of the prehistoric archaeology with the current project
  - b. 2<sup>nd</sup> A map showing all of the prehistoric archaeology with the original project
  - c. 3<sup>rd</sup> A map showing all of the historic archaeology with the current project
  - d. 4<sup>th</sup> A map showing all of the historic archaeology with the original project.
  - e. Please do not remove any archaeology because it is outside of the project area. I want to see all of it.
  - f. Please provide shapefiles of the cultural resources- both prehistoric and historic.
  - g. Please provide PDF copies of the site records.
- 4- A copy of the ethnographic map Tom shared with us with his notes of springs, places, etc.
  - a. Please provide shapefiles of the map.
- 5- A map showing all of the proposed projects in relation to the ethnographic study area (the red dotted line on the map Tom shared with us)
- 6- For the ethnography I'd like a copy of the all of the original source materials- I am aware that interviews and first accounts may not be included in this request.
- 7- A map showing all of the proposed projects in relation to the prehistoric trails network study area.
- 8- A copy of the water impact report and the report for the original project for comparison.

5401 DINAH SHORE DRIVE, PALM SPRINGS, CA 92264

T 760/699/6800 F 760/699/6924 WWW.AGUACALIENTE-NSN.GOV



---

If you have any questions or require additional information, please call me at (760) 699-6907 or e-mail me at [ptuck@aguacaliente-nsn.gov](mailto:ptuck@aguacaliente-nsn.gov) .

Cordially,

Patricia Garcia-Tuck, Director  
Tribal Historic Preservation Office  
**AGUA CALIENTE BAND  
OF CAHUILLA INDIANS**

C: Agua Caliente Cultural Register  
John Kalish, BLM

X:\Cult Correspondence\FY 2013\External\TraditionalUseArea\CEC\_Palen\_03\_26\_13.docx

## CALIFORNIA ENERGY COMMISSION

1516 NINTH STREET  
SACRAMENTO, CA 95814-5512  
www.energy.ca.gov



February 25, 2013

Patricia Tuck, THPO  
Agua Caliente Band of Cahuilla Indians  
5401 Dinah Shore Drive  
Palm Springs, CA 92264

RE: Palen Solar Electric Generating System (09-AFC-7C) - Invitation to Participate in California Energy Commission Tribal Consultation

Dear Ms. Tuck,

Your name was provided to the California Energy Commission (Energy Commission) by the Native American Heritage Commission (NAHC) in a letter dated February 13, 2013, as a representative of a Native American community who might be interested in the change in the design of the Palen Solar Power Project. The project is proposed to be located on 3,794 acres of Bureau of Land Management (BLM) land in Riverside County, California and is located approximately ¼ mile north of Interstate 10 near the Corn Springs Road exit, ten miles east of Desert Center and approximately halfway between the cities of Indio and Blythe. This letter provides general information concerning the project design changes, includes attached exhibits depicting the vicinity and project site location, and invites the tribe to participate in Energy Commission consultations with affiliated tribes.

On December 17, 2012, Palen Solar Holdings, LLC (PSH) filed a Petition to Amend with the Energy Commission requesting to modify the Palen Solar Power Project. The project, as licensed on December 15, 2010 by the Energy Commission, is a 500-megawatt (MW) solar thermal power generating facility utilizing parabolic trough technology. In the 2012 petition, PSH proposes changes to the approved site layout and technology associated with the approved project. PSH proposes to use solar tower technology. Heliostats, elevated mirrors mounted on a pylon guided by a tracking system, will be used to focus the sun's rays on a solar receiver steam generator (SRSG) located atop a 750-foot tall solar tower near the center of each solar field, to create steam. The modified project, which is named the Palen Solar Electric Generating System (PSEGS), will be comprised of two adjacent solar fields and associated facilities with a total combined nominal output of approximately 500 MW. PSH proposes to develop PSEGS in two operational phases: each phase will consist of one solar field and power block with approximately 250 MW of generation capacity. Each solar field will have an array of approximately 85,000 heliostats for a total of 170,000 heliostats for the project. Each phase will also share common facilities, including a common area containing an administration building, warehouse, evaporation ponds, maintenance complex and a meter/valve station for incoming natural gas service to the site, an onsite switchyard, and a single-circuit 230 kV generation tie-line to deliver power to the

Patricia Tuck  
February 25, 2013  
Page 3

meeting, please contact Thomas Gates at (916) 654-5008; Fax: (916) 651-8868; or  
thomas.gates@energy.ca.gov.

Sincerely,

A handwritten signature in black ink, appearing to read "Roger E. Johnson". The signature is fluid and cursive, with a long horizontal stroke extending to the right.

ROGER E. JOHNSON  
Deputy Director  
Siting, Transmission  
and Environmental Protection Division

Energy Commission Tribal Liaison

Enclosures: Site Vicinity Map  
PSEGS Facility Boundary Map

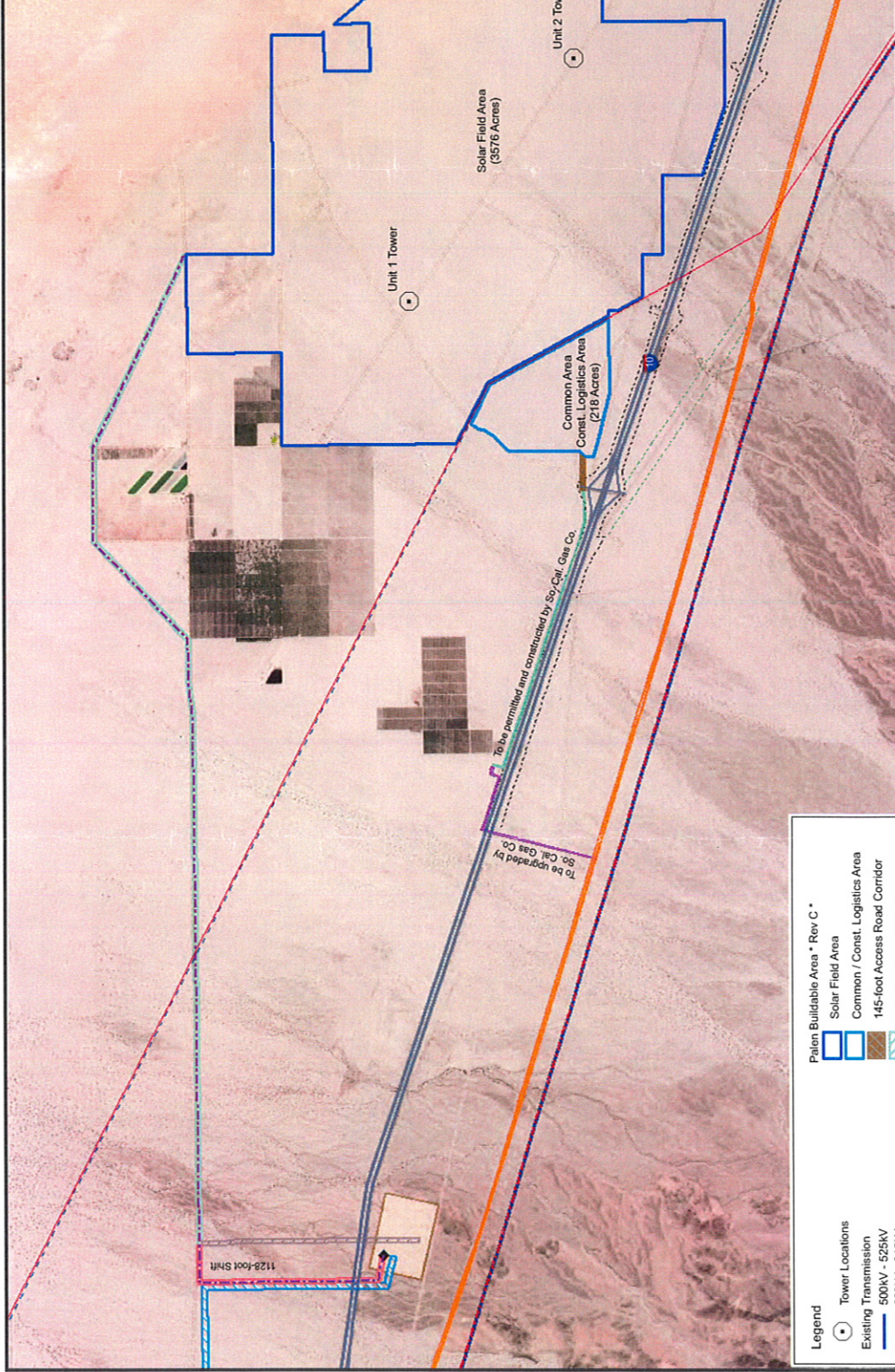
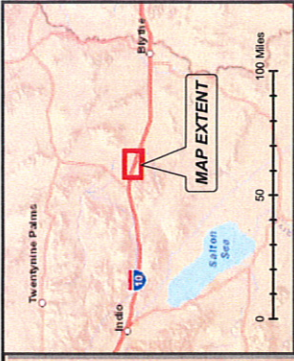


FIGURE NO. 2.1-1  
SITE VICINITY MAP



**Legend**

 Palen Solar Electric Generating System



### PSEGS FACILITY BOUNDARY MAP

Project: Palen Solar  
 Date: Dec 10, 2012  
 Revision: C  
 Prepared By: NS

Scale: 1:36,000  
 0 0.5 1 Miles  
 N  
 W E S

Scale correct when printed at 11x17  
 This map is for planning purposes only. The information herein was  
 prepared from data provided to us and we make no representation as to, however  
 no representation is made concerning the accuracy of the data.



**BrightSource**  
 BrightSource Energy, Inc.  
 1099 Harrison Street, Suite 2150  
 Oakland, CA 94612

#### Legend

Tower Locations	Palen Buildable Area * Rev. C *
Existing Transmission	Solar Field Area
500KV - 525KV	Common / Const. Logistics Area
220KV - 315KV	145-foot Access Road Corridor
SCE 161KV Line	Permitted Gen-Tie Corridor
Natural Gas Pipeline	Revised Gen-Tie Corridor
Desert Sunlight 160-foot Gen-Tie Corridor	Permitted Gen-Tie to be Dropped
SCE Red Bluff Substation	OPGW
Red Bluff (Position 2)	12KV Service (161KV Corridor)
Existing 1-10 ROW	Natural Gas Corridor
Existing Riverside County ROW	Existing Natural Gas Distribution
	Proposed Natural Gas Line Corridor

*To be permitted and constructed by So. Cal. Gas Co.*

*To be upgraded by So. Cal. Gas Co.*

*1128-foot SHR*