

California Energy Commission

DOCKETED
09-AFC-7C

TN 69884

MAR 08 2013

This docket contains the following documents:

1. Native American Heritage Commission (NAHC) letter (2-13-13) to the California Energy Commission (CEC) with attached list of tribes to be consulted concerning the Palen Solar Electric Generating System.
2. Site Vicinity Map and a PSEGS Facility Boundary Map. Each California Energy Commission Letter to each tribal entity also included two attached project maps; a Project Vicinity Map and a Project Site Map. However, this docket avoids redundancy by only providing one copy of each of the maps.
3. California Energy Commission letters (2-25-13) to each of the tribal entities listed in the NAHC letter. Because the Colorado River Indian Tribe provided two names under one address, the energy commission sent two letters to the Colorado River Indian Tribe. The San Manuel Band of Mission Indians has changed staff. Daniel McCarthy has replaced Ann Brierty and therefore, the California Energy Commission letter to the San Manuel Band of Mission Indians was addressed to Daniel McCarthy. This docket contains 15 California Energy Commission letters to tribal entities.

STATE OF CALIFORNIA

Edmund G. Brown, Jr., Governor

NATIVE AMERICAN HERITAGE COMMISSION

915 CAPITOL MALL, ROOM 364
SACRAMENTO, CA 95814
(916) 653-6251
Fax (916) 657-5390
e-mail: ds_naho@pacbell.net



February 13, 2013

Dr. Thomas Gates, Environmental/Cultural Resources Specialist

California Energy Commission

1516 Ninth Street (MS 40)
Sacramento, CA 95812-5512

Sent by FAX to: 916-651-8868
Number of Pages: 3

Re: Request for a Sacred Lands File Search and Native American Contacts List for the Nalep Solar Project LLC, a subsidiary of BrightSource Energy, Inc. (Project was formerly known as Palen Solar I, LLC) located on approximately 5,200-acres midway between the cities of Indio and Blythe in the Chuckwalla Mountains; eastern Riverside County, California

Dear Dr. Gates:

A record search of the sacred land file failed to indicate the presence of Native American cultural resources in the immediate project. Also, the absence of specific site information in the sacred lands file does not indicate the absence of cultural resources in any project area. Other sources of cultural resources should also be contacted for information regarding known and recorded sites.

Enclosed is a list of Native Americans individuals/organizations who may have knowledge of cultural resources in the project area. The Commission makes no recommendation or preference of a single individual, or group over another. This list should provide a starting place in locating areas of potential adverse impact within the proposed project area. I suggest you contact all of those indicated, if they cannot supply information, they might recommend others with specific knowledge. By contacting all those listed, your organization will be better able to respond to claims of failure to consult with the appropriate tribe or group. If a response has not been received within two weeks of notification, the Commission requests that you follow-up with a telephone call to ensure that the project information has been received.

If you receive notification of change of addresses and phone numbers from any of these individuals or groups, please notify me. With your assistance we are able to assure that our lists contain current information. If you have any questions or need additional information, please contact me at (916) 653-6251.

Sincerely,


Dave Singleton
Program Analyst

**Native American Contacts
Riverside County
February 12, 2013**

Twenty-Nine Palms Band of Mission Indians
Darrell Mike, Chairperson
46-200 Harrison Place Chemehuevi
Coachella, CA 92236
tribal-epa@worldnet.att.net
(760) 775-5566
(760) 808-0409 - cell - EPA
(760) 775-4639 Fax

Joseph R. Benitez (Mike)
P.O. Box 1829 Chemehuevi
Indio, CA 92201
(760) 347-0488
(760) 408-4089 - cell

Chemehuevi Reservation
Edward Smith, Chairperson
P.O. Box 1976 Chemehuevi
Chemehuevi Valley CA 92363
chair1cit@yahoo.com
(760) 858-4301
(760) 858-5400 Fax

Fort Mojave Indian Tribe
Timothy Williams, Chairperson
500 Merriman Ave Mojave
Needles, CA 92363
(760) 629-4591
(760) 629-5767 Fax

Colorado River Indian Tribe
Eldred Enas, Chairman; Ginger Scott, Museum
26600 Mojave Road Mojave
Parker, AZ 85344 Chemehuevi
crit.museum@yahoo.com
(928) 669-9211-Tribal Office
(928) 669-8970 ext 21
(928) 669-1925 Fax

Fort Yuma Quechan Indian Nation
Keeny Escalanti, Sr., President
PO Box 1899 Quechan
Yuma, AZ 85366
qitpres@quechantribe.com
(760) 572-0213
(760) 572-2102 FAX

AhaMaKav Cultural Society, Fort Mojave Indian
Linda Otero, Director
P.O. Box 5990 Mojave
Mohave Valley AZ 86440
(928) 768-4475
LindaOtero@fortmojave.com
(928) 768-7996 Fax

San Manuel Band of Mission Indians
Ann Brierty, Policy/Cultural Resources Department
26569 Community Center, Drive Serrano
Highland, CA 92346
(909) 864-8933, Ext 3250
abrierty@sanmanuel-nsn.gov
(909) 862-5152 Fax

This list is current only as of the date of this document.

Distribution of this list does not relieve any person of the statutory responsibility as defined in Section 7050.5 of the Health and Safety Code, Section 5097.94 of the Public Resources Code and Section 5097.98 of the Public Resources Code.

This list is only applicable for contacting local Native Americans with regard to cultural resources for the proposed Transfer of ownership of the the Palen Solar Project to Nalep Solar Project LLC, a subsidiary of BrightSource Energy, Inc. (a proposed concentrated solar thermal electric generating facility; located near Interstate 10 half-way between the cities of Indio and Blythe in the Chuckwalla Mountains; eastern Riverside County, California for which a Sacred Lands File search and Contacts list were requested.

**Native American Contacts
Riverside County
February 12, 2013**

Cabazon Band of Mission Indians
Judy Stapp, Director of Cultural Affairs
84-245 Indio Springs Cahuilla
Indio , CA 92203-3499
markwardt@cabazonindia

(760) 342-2593
(760) 347-7880 Fax

Fort Mojave Indian Tribe
Nora McDowell, Cultural Resources Coordinator
500 Merriman Ave Mojave
Needles , CA 92363
NoraMcDowall@fortmojave.
(760) 629-4591
(760) 629-5767 Fax

Agua Caliente Band of Cahuilla Indians THPO
Patricia Tuck, Tribal Historic Preservation Officer
5401 Dinah Shore Drive Cahuilla
Palm Springs, CA 92264
ptuck@augacaliente-nsn.gov
(760) 699-6907

(760) 699-6924- Fax

Quechan Indian Nation
THPO
P.O. Box 1899 Quechan
Yuma , AZ 85366
jbathke@quechantribe.
(928) 920-6068 - CELL
(760) 572-2423
(760) 572-0515 - FAX

Ah-Mut-Pipa Foundation
Preston J. Arrow-weed
P.O. Box 160 Quechan
Bard , CA 92222 Kumeyaay
ahmut@earthlink.net
(928) 388-9456

Cocopah Indian Reservation
Attn: H. Jill McCormick, Tribal Archaeologist
County !5th & Avenue G Cocopah
Sommerton , AZ 85350
culturalres@cocopah.com
(928) 530-2291

This list is current only as of the date of this document.

Distribution of this list does not relieve any person of the statutory responsibility as defined in Section 7050.5 of the Health and Safety Code, Section 5097.94 of the Public Resources Code and Section 5097.98 of the Public Resources Code.

This list is only applicable for contacting local Native Americans with regard to cultural resources for the proposed transfer of ownership of the the Palen Solar Project to Nalep Solar Project LLC, a subsidiary of BrightSource Energy, Inc. (a proposed concentrated solar thermal electric generating facility; located near Interstate 10 half-way between the cities of Indio and Blythe in the Chuckwalla Mountains; eastern Riverside County, California for which a Sacred Lands File search and Contacts list were requested.

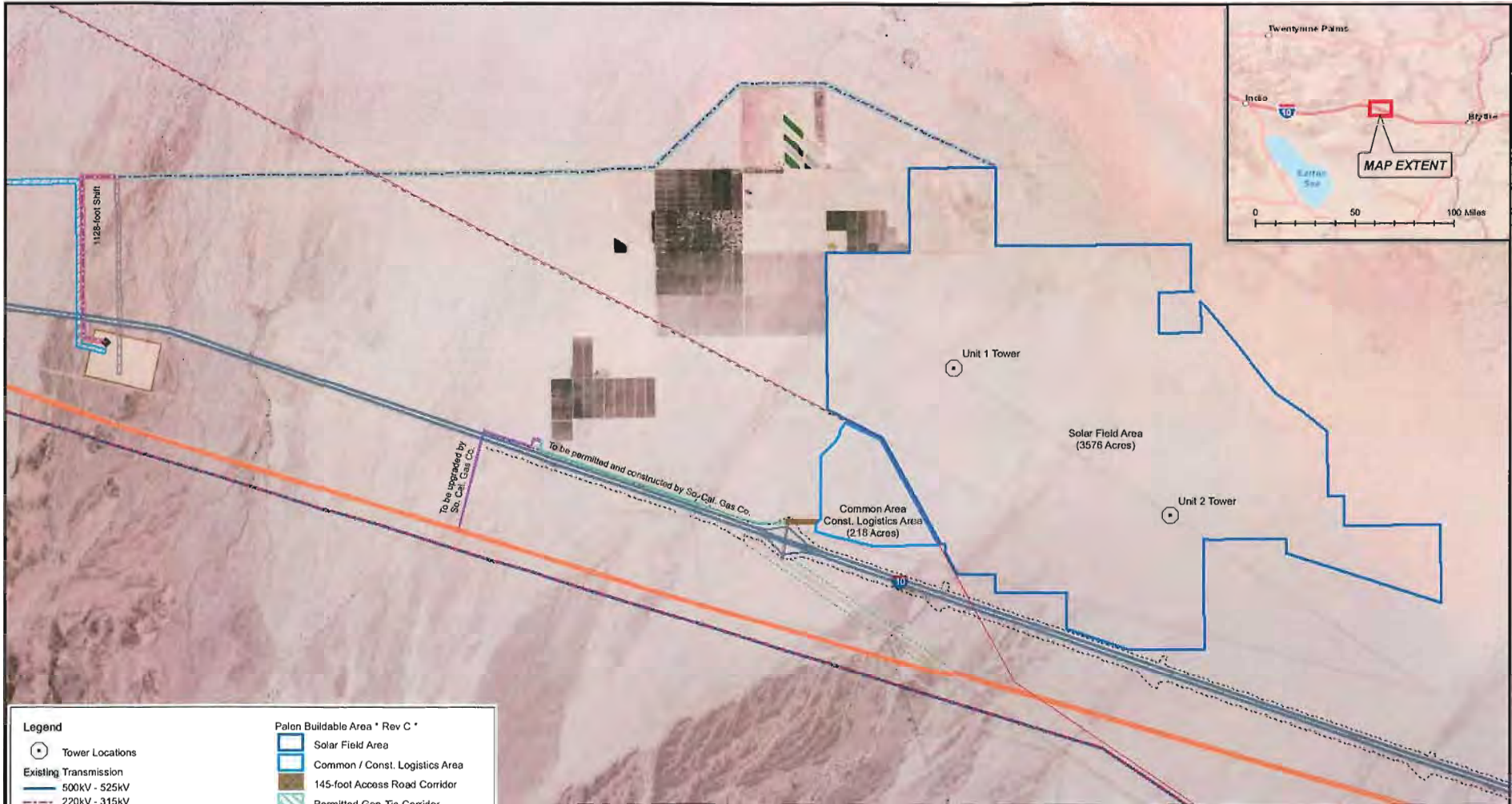


Legend

 Palen Solar Electric Generating System



FIGURE NO. 2.1-1
SITE VICINITY MAP



Legend		Palon Buildable Area * Rev C *	
	Tower Locations		Solar Field Area
	Existing Transmission		Common / Const. Logistics Area
	500kV - 525kV		145-foot Access Road Corridor
	220kV - 315kV		Permitted Gen-Tie Corridor
	SCE 161kV Line		Revised Gen-Tie Corridor
	Natural Gas Pipeline		Permitted Gen-Tie to be Dropped
	Desert Sunlight 160-foot Gen-Tie Corridor		OPGW
	SCE Red Bluff Substation		12kV Service (161kV Corridor)
	Red Bluff (Position 2)		Natural Gas Corridor
	Existing I-10 ROW		Existing Natural Gas Distribution
	Existing Riverside County ROW		Proposed Natural Gas Line Corridor

<p>BrightSource BrightSource Energy, Inc. 1999 Harrison Street, Suite 2150 Oakland, CA 94612</p>	<p>PSEGS FACILITY BOUNDARY MAP</p>									
	<p>Scale: 1:36,000</p> <p>0 0.5 1 Miles</p> <p>Scale correct when printed at 11x17 This map is for planning purposes only. The information herein was compiled from multiple sources and is considered to be reliable, however no representation is made concerning the accuracy of the data.</p>	<table border="1"> <tr> <td>Project:</td> <td>Paten Solar</td> <td rowspan="4" style="text-align: center; vertical-align: middle;"> <p>Figure No: 2.1-3</p> </td> </tr> <tr> <td>Date:</td> <td>Dec 10, 2012</td> </tr> <tr> <td>Revision:</td> <td>C</td> </tr> <tr> <td>Prepared By:</td> <td>NS</td> </tr> </table>	Project:	Paten Solar	<p>Figure No: 2.1-3</p>	Date:	Dec 10, 2012	Revision:	C	Prepared By:
Project:	Paten Solar	<p>Figure No: 2.1-3</p>								
Date:	Dec 10, 2012									
Revision:	C									
Prepared By:	NS									

CALIFORNIA ENERGY COMMISSION

1516 NINTH STREET
SACRAMENTO, CA 95814-5512
www.energy.ca.gov



February 25, 2013

Twenty-Nine Palms Band of Mission Indians
Darrell Mike, Chairperson
46-200 Harrison Place
Coachella, CA 92236

RE: Palen Solar Electric Generating System (09-AFC-7C) - Invitation to Participate in California Energy Commission Tribal Consultation

Dear Honorable Chairperson Mike,

Your name was provided to the California Energy Commission (Energy Commission) by the Native American Heritage Commission (NAHC) in a letter dated February 13, 2013, as a representative of a Native American community who might be interested in the change in the design of the Palen Solar Power Project. The project is proposed to be located on 3,794 acres of Bureau of Land Management (BLM) land in Riverside County, California and is located approximately ¼ mile north of Interstate 10 near the Corn Springs Road exit, ten miles east of Desert Center and approximately halfway between the cities of Indio and Blythe. This letter provides general information concerning the project design changes, includes attached exhibits depicting the vicinity and project site location, and invites the tribe to participate in Energy Commission consultations with affiliated tribes.

On December 17, 2012, Palen Solar Holdings, LLC (PSH) filed a Petition to Amend with the Energy Commission requesting to modify the Palen Solar Power Project. The project, as licensed on December 15, 2010 by the Energy Commission, is a 500-megawatt (MW) solar thermal power generating facility utilizing parabolic trough technology. In the 2012 petition, PSH proposes changes to the approved site layout and technology associated with the approved project. PSH proposes to use solar tower technology. Heliostats, elevated mirrors mounted on a pylon guided by a tracking system, will be used to focus the sun's rays on a solar receiver steam generator (SRSG) located atop a 750-foot tall solar tower near the center of each solar field, to create steam. The modified project, which is named the Palen Solar Electric Generating System (PSEGS), will be comprised of two adjacent solar fields and associated facilities with a total combined nominal output of approximately 500 MW. PSH proposes to develop PSEGS in two operational phases: each phase will consist of one solar field and power block with approximately 250 MW of generation capacity. Each solar field will have an array of approximately 85,000 heliostats for a total of 170,000 heliostats for the project. Each phase will also share common facilities, including a common area containing an administration building, warehouse, evaporation ponds, maintenance complex and a meter/valve station for incoming natural gas service to the site, an onsite switchyard, and a single-circuit 230 kV generation tie-line to deliver power to the

electricity grid. Other onsite facilities will include access and maintenance roads (either dirt, gravel or paved), perimeter fencing, tortoise fencing and other ancillary security facilities. PSH does not propose to change the generating capacity of the Energy Commission-approved project, the site access, or the interconnection point at Red Bluff Substation, although there will be a slight re-routing of the generation tie-line near the western end of the route and around Southern California Edison's newly constructed Red Bluff Substation. In addition to approval from the Energy Commission, the amended project will require BLM to complete an environmental review and grant a right-of-way lease.

Over the coming months, the Energy Commission will be holding a number of public workshops and hearings on the proposal to determine whether the modified project should be approved for construction and operation and under what set of conditions. These workshops and hearings will provide the public and tribes, as well as local, state and federal agencies, the opportunity to ask questions about, and provide input on, the proposed modifications. The Energy Commission will issue notices for these workshops and hearings at least 10 days prior to the meeting. If you want to be notified by e-mail whenever a public meeting is scheduled or a document is posted to the project website, you can sign up for the project list server on the web page. Public notices can also be sent to you by mail at your request. Should the Tribe request, Energy Commission staff will arrange for a separate meeting to discuss issues that the Tribe may wish to hold in confidence from the general public.

To view a copy of the Petition to Amend and supplement for this compliance proceeding (09-AFC-7C) and find more information about the project and proceedings, please visit the project website. For access to all project information, including past project certification, go to: <http://www.energy.ca.gov/sitingcases/palen>.

For access to specific project amendment and supplemental information go to: http://www.energy.ca.gov/sitingcases/palen/compliance/2012-12-18_Pettition_to_amend_TN-68910.pdf, and [http://www.energy.ca.gov/sitingcases/palen/compliance/supplement_1_pti/Supplement No 01.pdf](http://www.energy.ca.gov/sitingcases/palen/compliance/supplement_1_pti/Supplement_No_01.pdf).

Please consider reviewing the above referenced project information so that we can promptly proceed to meaningful dialogue that matches the pace of the project compliance process. Staff anticipates publishing its Preliminary Staff Assessment on the petition in May 2013. Staff will be following up this letter with phone calls to ascertain the tribe's level of interest.

The Energy Commission staff looks forward to your comments or questions. If you would like to talk with staff about concerns regarding impacts that Palen Solar Power Plant modifications could have on resources of concern to the Tribe or arrange a

Darrell Mike
February 25, 2013
Page 3

meeting, please contact Thomas Gates at (916) 654-5008; Fax: (916) 651-8868; or
thomas.gates@energy.ca.gov.

Sincerely,

A handwritten signature in black ink, appearing to read "Roger E. Johnson". The signature is fluid and cursive, with a long horizontal stroke at the end.

ROGER E. JOHNSON
Deputy Director
Siting, Transmission
and Environmental Protection Division

Energy Commission Tribal Liaison

Enclosures: Site Vicinity Map
PSEGS Facility Boundary Map

CALIFORNIA ENERGY COMMISSION

1516 NINTH STREET
SACRAMENTO, CA 95814-5512
www.energy.ca.gov



February 25, 2013

Joseph R. Benitez
P.O. Box 1829
Indio, CA 92201

RE: Palen Solar Electric Generating System (09-AFC-7C) - Invitation to Participate in California Energy Commission Tribal Consultation

Dear Mr. Benitez,

Your name was provided to the California Energy Commission (Energy Commission) by the Native American Heritage Commission (NAHC) in a letter dated February 13, 2013, as a representative of a Native American community who might be interested in the change in the design of the Palen Solar Power Project. The project is proposed to be located on 3,794 acres of Bureau of Land Management (BLM) land in Riverside County, California and is located approximately ¼ mile north of Interstate 10 near the Corn Springs Road exit, ten miles east of Desert Center and approximately halfway between the cities of Indio and Blythe. This letter provides general information concerning the project design changes, includes attached exhibits depicting the vicinity and project site location, and invites the tribe to participate in Energy Commission consultations with affiliated tribes.

On December 17, 2012, Palen Solar Holdings, LLC (PSH) filed a Petition to Amend with the Energy Commission requesting to modify the Palen Solar Power Project. The project, as licensed on December 15, 2010 by the Energy Commission, is a 500-megawatt (MW) solar thermal power generating facility utilizing parabolic trough technology. In the 2012 petition, PSH proposes changes to the approved site layout and technology associated with the approved project. PSH proposes to use solar tower technology. Heliostats, elevated mirrors mounted on a pylon guided by a tracking system, will be used to focus the sun's rays on a solar receiver steam generator (SRSG) located atop a 750-foot tall solar tower near the center of each solar field, to create steam. The modified project, which is named the Palen Solar Electric Generating System (PSEGS), will be comprised of two adjacent solar fields and associated facilities with a total combined nominal output of approximately 500 MW. PSH proposes to develop PSEGS in two operational phases: each phase will consist of one solar field and power block with approximately 250 MW of generation capacity. Each solar field will have an array of approximately 85,000 heliostats for a total of 170,000 heliostats for the project. Each phase will also share common facilities, including a common area containing an administration building, warehouse, evaporation ponds, maintenance complex and a meter/valve station for incoming natural gas service to the site, an onsite switchyard, and a single-circuit 230 kV generation tie-line to deliver power to the

electricity grid. Other onsite facilities will include access and maintenance roads (either dirt, gravel or paved), perimeter fencing, tortoise fencing and other ancillary security facilities. PSH does not propose to change the generating capacity of the Energy Commission-approved project, the site access, or the interconnection point at Red Bluff Substation, although there will be a slight re-routing of the generation tie-line near the western end of the route and around Southern California Edison's newly constructed Red Bluff Substation. In addition to approval from the Energy Commission, the amended project will require BLM to complete an environmental review and grant a right-of-way lease.

Over the coming months, the Energy Commission will be holding a number of public workshops and hearings on the proposal to determine whether the modified project should be approved for construction and operation and under what set of conditions. These workshops and hearings will provide the public and tribes, as well as local, state and federal agencies, the opportunity to ask questions about, and provide input on, the proposed modifications. The Energy Commission will issue notices for these workshops and hearings at least 10 days prior to the meeting. If you want to be notified by e-mail whenever a public meeting is scheduled or a document is posted to the project website, you can sign up for the project list server on the web page. Public notices can also be sent to you by mail at your request. Should the Tribe request, Energy Commission staff will arrange for a separate meeting to discuss issues that the Tribe may wish to hold in confidence from the general public.

To view a copy of the Petition to Amend and supplement for this compliance proceeding (09-AFC-7C) and find more information about the project and proceedings, please visit the project website. For access to all project information, including past project certification, go to: <http://www.energy.ca.gov/sitingcases/palen>.

For access to specific project amendment and supplemental information go to: http://www.energy.ca.gov/sitingcases/palen/compliance/2012-12-18_Pettition_to_amend_TN-68910.pdf, and [http://www.energy.ca.gov/sitingcases/palen/compliance/supplement_1_pti/Supplement No 01.pdf](http://www.energy.ca.gov/sitingcases/palen/compliance/supplement_1_pti/Supplement_No_01.pdf).

Please consider reviewing the above referenced project information so that we can promptly proceed to meaningful dialogue that matches the pace of the project compliance process. Staff anticipates publishing its Preliminary Staff Assessment on the petition in May 2013. Staff will be following up this letter with phone calls to ascertain the tribe's level of interest.

The Energy Commission staff looks forward to your comments or questions. If you would like to talk with staff about concerns regarding impacts that Palen Solar Power Plant modifications could have on resources of concern to the Tribe or arrange a

Joseph R. Benitez
February 25, 2013
Page 3

meeting, please contact Thomas Gates at (916) 654-5008; Fax: (916) 651-8868; or
thomas.gates@energy.ca.gov.

Sincerely,

A handwritten signature in black ink, appearing to read "Roger E. Johnson". The signature is fluid and cursive, with the first name "Roger" being the most prominent.

ROGER E. JOHNSON
Deputy Director
Siting, Transmission
and Environmental Protection Division

Energy Commission Tribal Liaison

Enclosures: Site Vicinity Map
PSEGS Facility Boundary Map

CALIFORNIA ENERGY COMMISSION

1516 NINTH STREET
SACRAMENTO, CA 95814-5512
www.energy.ca.gov



February 25, 2013

Edward Smith, Chairperson
Chemehuevi Reservation
P.O. Box 1976
Chemehuevi Valley, CA 92363

RE: Palen Solar Electric Generating System (09-AFC-7C) - Invitation to Participate in California Energy Commission Tribal Consultation

Dear Honorable Chairperson Smith,

Your name was provided to the California Energy Commission (Energy Commission) by the Native American Heritage Commission (NAHC) in a letter dated February 13, 2013, as a representative of a Native American community who might be interested in the change in the design of the Palen Solar Power Project. The project is proposed to be located on 3,794 acres of Bureau of Land Management (BLM) land in Riverside County, California and is located approximately ¼ mile north of Interstate 10 near the Corn Springs Road exit, ten miles east of Desert Center and approximately halfway between the cities of Indio and Blythe. This letter provides general information concerning the project design changes, includes attached exhibits depicting the vicinity and project site location, and invites the tribe to participate in Energy Commission consultations with affiliated tribes.

On December 17, 2012, Palen Solar Holdings, LLC (PSH) filed a Petition to Amend with the Energy Commission requesting to modify the Palen Solar Power Project. The project, as licensed on December 15, 2010 by the Energy Commission, is a 500-megawatt (MW) solar thermal power generating facility utilizing parabolic trough technology. In the 2012 petition, PSH proposes changes to the approved site layout and technology associated with the approved project. PSH proposes to use solar tower technology. Heliostats, elevated mirrors mounted on a pylon guided by a tracking system, will be used to focus the sun's rays on a solar receiver steam generator (SRSG) located atop a 750-foot tall solar tower near the center of each solar field, to create steam. The modified project, which is named the Palen Solar Electric Generating System (PSEGS), will be comprised of two adjacent solar fields and associated facilities with a total combined nominal output of approximately 500 MW. PSH proposes to develop PSEGS in two operational phases: each phase will consist of one solar field and power block with approximately 250 MW of generation capacity. Each solar field will have an array of approximately 85,000 heliostats for a total of 170,000 heliostats for the project. Each phase will also share common facilities, including a common area containing an administration building, warehouse, evaporation ponds, maintenance complex and a meter/valve station for incoming natural gas service to the site, an onsite switchyard, and a single-circuit 230 kV generation tie-line to deliver power to the

electricity grid. Other onsite facilities will include access and maintenance roads (either dirt, gravel or paved), perimeter fencing, tortoise fencing and other ancillary security facilities. PSH does not propose to change the generating capacity of the Energy Commission-approved project, the site access, or the interconnection point at Red Bluff Substation, although there will be a slight re-routing of the generation tie-line near the western end of the route and around Southern California Edison's newly constructed Red Bluff Substation. In addition to approval from the Energy Commission, the amended project will require BLM to complete an environmental review and grant a right-of-way lease.

Over the coming months, the Energy Commission will be holding a number of public workshops and hearings on the proposal to determine whether the modified project should be approved for construction and operation and under what set of conditions. These workshops and hearings will provide the public and tribes, as well as local, state and federal agencies, the opportunity to ask questions about, and provide input on, the proposed modifications. The Energy Commission will issue notices for these workshops and hearings at least 10 days prior to the meeting. If you want to be notified by e-mail whenever a public meeting is scheduled or a document is posted to the project website, you can sign up for the project list server on the web page. Public notices can also be sent to you by mail at your request. Should the Tribe request, Energy Commission staff will arrange for a separate meeting to discuss issues that the Tribe may wish to hold in confidence from the general public.

To view a copy of the Petition to Amend and supplement for this compliance proceeding (09-AFC-7C) and find more information about the project and proceedings, please visit the project website. For access to all project information, including past project certification, go to: <http://www.energy.ca.gov/sitingcases/palen>.

For access to specific project amendment and supplemental information go to: http://www.energy.ca.gov/sitingcases/palen/compliance/2012-12-18_Pettition_to_amend_TN-68910.pdf, and [http://www.energy.ca.gov/sitingcases/palen/compliance/supplement_1_pti/Supplement No 01.pdf](http://www.energy.ca.gov/sitingcases/palen/compliance/supplement_1_pti/Supplement_No_01.pdf).

Please consider reviewing the above referenced project information so that we can promptly proceed to meaningful dialogue that matches the pace of the project compliance process. Staff anticipates publishing its Preliminary Staff Assessment on the petition in May 2013. Staff will be following up this letter with phone calls to ascertain the tribe's level of interest.

The Energy Commission staff looks forward to your comments or questions. If you would like to talk with staff about concerns regarding impacts that Palen Solar Power Plant modifications could have on resources of concern to the Tribe or arrange a

Edward Smith
February 25, 2013
Page 3

meeting, please contact Thomas Gates at (916) 654-5008; Fax: (916) 651-8868; or
thomas.gates@energy.ca.gov.

Sincerely,

A handwritten signature in black ink, appearing to read "Roger E. Johnson". The signature is fluid and cursive, with a large initial "R" and "J".

ROGER E. JOHNSON
Deputy Director
Siting, Transmission
and Environmental Protection Division

Energy Commission Tribal Liaison

Enclosures: Site Vicinity Map
PSEGS Facility Boundary Map

CALIFORNIA ENERGY COMMISSION

1516 NINTH STREET
SACRAMENTO, CA 95814-5512
www.energy.ca.gov



February 25, 2013

Timothy Williams, Chairperson
Fort Mojave Indian Tribe
500 Merriman Ave
Needles, CA 92363

RE: Palen Solar Electric Generating System (09-AFC-7C) - Invitation to Participate in California Energy Commission Tribal Consultation

Dear Honorable Chairperson Williams,

Your name was provided to the California Energy Commission (Energy Commission) by the Native American Heritage Commission (NAHC) in a letter dated February 13, 2013, as a representative of a Native American community who might be interested in the change in the design of the Palen Solar Power Project. The project is proposed to be located on 3,794 acres of Bureau of Land Management (BLM) land in Riverside County, California and is located approximately ¼ mile north of Interstate 10 near the Corn Springs Road exit, ten miles east of Desert Center and approximately halfway between the cities of Indio and Blythe. This letter provides general information concerning the project design changes, includes attached exhibits depicting the vicinity and project site location, and invites the tribe to participate in Energy Commission consultations with affiliated tribes.

On December 17, 2012, Palen Solar Holdings, LLC (PSH) filed a Petition to Amend with the Energy Commission requesting to modify the Palen Solar Power Project. The project, as licensed on December 15, 2010 by the Energy Commission, is a 500-megawatt (MW) solar thermal power generating facility utilizing parabolic trough technology. In the 2012 petition, PSH proposes changes to the approved site layout and technology associated with the approved project. PSH proposes to use solar tower technology. Heliostats, elevated mirrors mounted on a pylon guided by a tracking system, will be used to focus the sun's rays on a solar receiver steam generator (SRSG) located atop a 750-foot tall solar tower near the center of each solar field, to create steam. The modified project, which is named the Palen Solar Electric Generating System (PSEGS), will be comprised of two adjacent solar fields and associated facilities with a total combined nominal output of approximately 500 MW. PSH proposes to develop PSEGS in two operational phases: each phase will consist of one solar field and power block with approximately 250 MW of generation capacity. Each solar field will have an array of approximately 85,000 heliostats for a total of 170,000 heliostats for the project. Each phase will also share common facilities, including a common area containing an administration building, warehouse, evaporation ponds, maintenance complex and a meter/valve station for incoming natural gas service to the site, an onsite switchyard, and a single-circuit 230 kV generation tie-line to deliver power to the

electricity grid. Other onsite facilities will include access and maintenance roads (either dirt, gravel or paved), perimeter fencing, tortoise fencing and other ancillary security facilities. PSH does not propose to change the generating capacity of the Energy Commission-approved project, the site access, or the interconnection point at Red Bluff Substation, although there will be a slight re-routing of the generation tie-line near the western end of the route and around Southern California Edison's newly constructed Red Bluff Substation. In addition to approval from the Energy Commission, the amended project will require BLM to complete an environmental review and grant a right-of-way lease.

Over the coming months, the Energy Commission will be holding a number of public workshops and hearings on the proposal to determine whether the modified project should be approved for construction and operation and under what set of conditions. These workshops and hearings will provide the public and tribes, as well as local, state and federal agencies, the opportunity to ask questions about, and provide input on, the proposed modifications. The Energy Commission will issue notices for these workshops and hearings at least 10 days prior to the meeting. If you want to be notified by e-mail whenever a public meeting is scheduled or a document is posted to the project website, you can sign up for the project list server on the web page. Public notices can also be sent to you by mail at your request. Should the Tribe request, Energy Commission staff will arrange for a separate meeting to discuss issues that the Tribe may wish to hold in confidence from the general public.

To view a copy of the Petition to Amend and supplement for this compliance proceeding (09-AFC-7C) and find more information about the project and proceedings, please visit the project website. For access to all project information, including past project certification, go to: <http://www.energy.ca.gov/sitingcases/palen>.

For access to specific project amendment and supplemental information go to: [http://www.energy.ca.gov/sitingcases/palen/compliance/2012-12-18 Petition to amend TN-68910.pdf](http://www.energy.ca.gov/sitingcases/palen/compliance/2012-12-18%20Petition%20to%20amend%20TN-68910.pdf), and [http://www.energy.ca.gov/sitingcases/palen/compliance/supplement_1_pti/Supplement No 01.pdf](http://www.energy.ca.gov/sitingcases/palen/compliance/supplement_1_pti/Supplement%20No%2001.pdf).

Please consider reviewing the above referenced project information so that we can promptly proceed to meaningful dialogue that matches the pace of the project compliance process. Staff anticipates publishing its Preliminary Staff Assessment on the petition in May 2013. Staff will be following up this letter with phone calls to ascertain the tribe's level of interest.

The Energy Commission staff looks forward to your comments or questions. If you would like to talk with staff about concerns regarding impacts that Palen Solar Power Plant modifications could have on resources of concern to the Tribe or arrange a

Timothy Williams
February 25, 2013
Page 3

meeting, please contact Thomas Gates at (916) 654-5008; Fax: (916) 651-8868; or
thomas.gates@energy.ca.gov.

Sincerely,

A handwritten signature in black ink, appearing to read "Roger E. Johnson". The signature is fluid and cursive, with a large initial "R" and "J".

ROGER E. JOHNSON
Deputy Director
Siting, Transmission
and Environmental Protection Division

Energy Commission Tribal Liaison

Enclosures: Site Vicinity Map
PSEGS Facility Boundary Map

CALIFORNIA ENERGY COMMISSION

1516 NINTH STREET
SACRAMENTO, CA 95814-5512
www.energy.ca.gov



February 25, 2013

Eldred Enas, Chairperson
Colorado River Indian Tribe
26600 Mojave Road
Parker, AZ 85344

RE: Palen Solar Electric Generating System (09-AFC-7C) - Invitation to Participate in California Energy Commission Tribal Consultation

Dear Honorable Chairperson Enas,

Your name was provided to the California Energy Commission (Energy Commission) by the Native American Heritage Commission (NAHC) in a letter dated February 13, 2013, as a representative of a Native American community who might be interested in the change in the design of the Palen Solar Power Project. The project is proposed to be located on 3,794 acres of Bureau of Land Management (BLM) land in Riverside County, California and is located approximately ¼ mile north of Interstate 10 near the Corn Springs Road exit, ten miles east of Desert Center and approximately halfway between the cities of Indio and Blythe. This letter provides general information concerning the project design changes, includes attached exhibits depicting the vicinity and project site location, and invites the tribe to participate in Energy Commission consultations with affiliated tribes.

On December 17, 2012, Palen Solar Holdings, LLC (PSH) filed a Petition to Amend with the Energy Commission requesting to modify the Palen Solar Power Project. The project, as licensed on December 15, 2010 by the Energy Commission, is a 500-megawatt (MW) solar thermal power generating facility utilizing parabolic trough technology. In the 2012 petition, PSH proposes changes to the approved site layout and technology associated with the approved project. PSH proposes to use solar tower technology. Heliostats, elevated mirrors mounted on a pylon guided by a tracking system, will be used to focus the sun's rays on a solar receiver steam generator (SRSG) located atop a 750-foot tall solar tower near the center of each solar field, to create steam. The modified project, which is named the Palen Solar Electric Generating System (PSEGS), will be comprised of two adjacent solar fields and associated facilities with a total combined nominal output of approximately 500 MW. PSH proposes to develop PSEGS in two operational phases: each phase will consist of one solar field and power block with approximately 250 MW of generation capacity. Each solar field will have an array of approximately 85,000 heliostats for a total of 170,000 heliostats for the project. Each phase will also share common facilities, including a common area containing an administration building, warehouse, evaporation ponds, maintenance complex and a meter/valve station for incoming natural gas service to the site, an onsite switchyard, and a single-circuit 230 kV generation tie-line to deliver power to the

electricity grid. Other onsite facilities will include access and maintenance roads (either dirt, gravel or paved), perimeter fencing, tortoise fencing and other ancillary security facilities. PSH does not propose to change the generating capacity of the Energy Commission-approved project, the site access, or the interconnection point at Red Bluff Substation, although there will be a slight re-routing of the generation tie-line near the western end of the route and around Southern California Edison's newly constructed Red Bluff Substation. In addition to approval from the Energy Commission, the amended project will require BLM to complete an environmental review and grant a right-of-way lease.

Over the coming months, the Energy Commission will be holding a number of public workshops and hearings on the proposal to determine whether the modified project should be approved for construction and operation and under what set of conditions. These workshops and hearings will provide the public and tribes, as well as local, state and federal agencies, the opportunity to ask questions about, and provide input on, the proposed modifications. The Energy Commission will issue notices for these workshops and hearings at least 10 days prior to the meeting. If you want to be notified by e-mail whenever a public meeting is scheduled or a document is posted to the project website, you can sign up for the project list server on the web page. Public notices can also be sent to you by mail at your request. Should the Tribe request, Energy Commission staff will arrange for a separate meeting to discuss issues that the Tribe may wish to hold in confidence from the general public.

To view a copy of the Petition to Amend and supplement for this compliance proceeding (09-AFC-7C) and find more information about the project and proceedings, please visit the project website. For access to all project information, including past project certification, go to: <http://www.energy.ca.gov/sitingcases/palen>.

For access to specific project amendment and supplemental information go to: http://www.energy.ca.gov/sitingcases/palen/compliance/2012-12-18_Petition_to_amend_TN-68910.pdf, and [http://www.energy.ca.gov/sitingcases/palen/compliance/supplement_1_pti/Supplement No 01.pdf](http://www.energy.ca.gov/sitingcases/palen/compliance/supplement_1_pti/Supplement_No_01.pdf).

Please consider reviewing the above referenced project information so that we can promptly proceed to meaningful dialogue that matches the pace of the project compliance process. Staff anticipates publishing its Preliminary Staff Assessment on the petition in May 2013. Staff will be following up this letter with phone calls to ascertain the tribe's level of interest.

The Energy Commission staff looks forward to your comments or questions. If you would like to talk with staff about concerns regarding impacts that Palen Solar Power Plant modifications could have on resources of concern to the Tribe or arrange a

Eldred Enas
February 25, 2013
Page 3

meeting, please contact Thomas Gates at (916) 654-5008; Fax: (916) 651-8868; or
thomas.gates@energy.ca.gov.

Sincerely,

A handwritten signature in black ink, appearing to read "Roger E. Johnson". The signature is fluid and cursive, with the first name "Roger" being the most prominent.

ROGER E. JOHNSON
Deputy Director
Siting, Transmission
and Environmental Protection Division

Energy Commission Tribal Liaison

Enclosures: Site Vicinity Map
PSEGS Facility Boundary Map

CALIFORNIA ENERGY COMMISSION

1516 NINTH STREET
SACRAMENTO, CA 95814-5512
www.energy.ca.gov



February 25, 2013

Ginger Scott, Museum
Colorado River Indian Tribe
26600 Mojave Road
Parker, AZ 85344

RE: Palen Solar Electric Generating System (09-AFC-7C) - Invitation to Participate in California Energy Commission Tribal Consultation

Dear Ms. Scott,

Your name was provided to the California Energy Commission (Energy Commission) by the Native American Heritage Commission (NAHC) in a letter dated February 13, 2013, as a representative of a Native American community who might be interested in the change in the design of the Palen Solar Power Project. The project is proposed to be located on 3,794 acres of Bureau of Land Management (BLM) land in Riverside County, California and is located approximately ¼ mile north of Interstate 10 near the Corn Springs Road exit, ten miles east of Desert Center and approximately halfway between the cities of Indio and Blythe. This letter provides general information concerning the project design changes, includes attached exhibits depicting the vicinity and project site location, and invites the tribe to participate in Energy Commission consultations with affiliated tribes.

On December 17, 2012, Palen Solar Holdings, LLC (PSH) filed a Petition to Amend with the Energy Commission requesting to modify the Palen Solar Power Project. The project, as licensed on December 15, 2010 by the Energy Commission, is a 500-megawatt (MW) solar thermal power generating facility utilizing parabolic trough technology. In the 2012 petition, PSH proposes changes to the approved site layout and technology associated with the approved project. PSH proposes to use solar tower technology. Heliostats, elevated mirrors mounted on a pylon guided by a tracking system, will be used to focus the sun's rays on a solar receiver steam generator (SRSG) located atop a 750-foot tall solar tower near the center of each solar field, to create steam. The modified project, which is named the Palen Solar Electric Generating System (PSEGS), will be comprised of two adjacent solar fields and associated facilities with a total combined nominal output of approximately 500 MW. PSH proposes to develop PSEGS in two operational phases: each phase will consist of one solar field and power block with approximately 250 MW of generation capacity. Each solar field will have an array of approximately 85,000 heliostats for a total of 170,000 heliostats for the project. Each phase will also share common facilities, including a common area containing an administration building, warehouse, evaporation ponds, maintenance complex and a meter/valve station for incoming natural gas service to the site, an onsite switchyard, and a single-circuit 230 kV generation tie-line to deliver power to the

electricity grid. Other onsite facilities will include access and maintenance roads (either dirt, gravel or paved), perimeter fencing, tortoise fencing and other ancillary security facilities. PSH does not propose to change the generating capacity of the Energy Commission-approved project, the site access, or the interconnection point at Red Bluff Substation, although there will be a slight re-routing of the generation tie-line near the western end of the route and around Southern California Edison's newly constructed Red Bluff Substation. In addition to approval from the Energy Commission, the amended project will require BLM to complete an environmental review and grant a right-of-way lease.

Over the coming months, the Energy Commission will be holding a number of public workshops and hearings on the proposal to determine whether the modified project should be approved for construction and operation and under what set of conditions. These workshops and hearings will provide the public and tribes, as well as local, state and federal agencies, the opportunity to ask questions about, and provide input on, the proposed modifications. The Energy Commission will issue notices for these workshops and hearings at least 10 days prior to the meeting. If you want to be notified by e-mail whenever a public meeting is scheduled or a document is posted to the project website, you can sign up for the project list server on the web page. Public notices can also be sent to you by mail at your request. Should the Tribe request, Energy Commission staff will arrange for a separate meeting to discuss issues that the Tribe may wish to hold in confidence from the general public.

To view a copy of the Petition to Amend and supplement for this compliance proceeding (09-AFC-7C) and find more information about the project and proceedings, please visit the project website. For access to all project information, including past project certification, go to: <http://www.energy.ca.gov/sitingcases/palen>.

For access to specific project amendment and supplemental information go to: http://www.energy.ca.gov/sitingcases/palen/compliance/2012-12-18_Pettition_to_amend_TN-68910.pdf, and http://www.energy.ca.gov/sitingcases/palen/compliance/supplement_1_pti/Supplement_No_01.pdf.

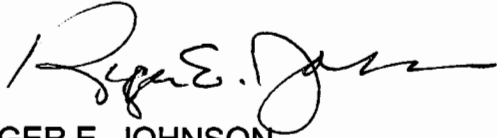
Please consider reviewing the above referenced project information so that we can promptly proceed to meaningful dialogue that matches the pace of the project compliance process. Staff anticipates publishing its Preliminary Staff Assessment on the petition in May 2013. Staff will be following up this letter with phone calls to ascertain the tribe's level of interest.

The Energy Commission staff looks forward to your comments or questions. If you would like to talk with staff about concerns regarding impacts that Palen Solar Power Plant modifications could have on resources of concern to the Tribe or arrange a

Ginger Scott
February 25, 2013
Page 3

meeting, please contact Thomas Gates at (916) 654-5008; Fax: (916) 651-8868; or
thomas.gates@energy.ca.gov.

Sincerely,

A handwritten signature in black ink, appearing to read "Roger E. Johnson". The signature is fluid and cursive, with a long horizontal stroke extending to the right.

ROGER E. JOHNSON
Deputy Director
Siting, Transmission
and Environmental Protection Division

Energy Commission Tribal Liaison

Enclosures: Site Vicinity Map
PSEGS Facility Boundary Map

CALIFORNIA ENERGY COMMISSION

1516 NINTH STREET
SACRAMENTO, CA 95814-5512
www.energy.ca.gov



February 25, 2013

Keeny Escalanti, Sr., President
Fort Yuma Quechan Indian Nation
P.O. Box 1899
Yuma, AZ 85366

RE: Palen Solar Electric Generating System (09-AFC-7C) - Invitation to Participate in California Energy Commission Tribal Consultation

Dear Honorable President Escalanti,

Your name was provided to the California Energy Commission (Energy Commission) by the Native American Heritage Commission (NAHC) in a letter dated February 13, 2013, as a representative of a Native American community who might be interested in the change in the design of the Palen Solar Power Project. The project is proposed to be located on 3,794 acres of Bureau of Land Management (BLM) land in Riverside County, California and is located approximately ¼ mile north of Interstate 10 near the Corn Springs Road exit, ten miles east of Desert Center and approximately halfway between the cities of Indio and Blythe. This letter provides general information concerning the project design changes, includes attached exhibits depicting the vicinity and project site location, and invites the tribe to participate in Energy Commission consultations with affiliated tribes.

On December 17, 2012, Palen Solar Holdings, LLC (PSH) filed a Petition to Amend with the Energy Commission requesting to modify the Palen Solar Power Project. The project, as licensed on December 15, 2010 by the Energy Commission, is a 500-megawatt (MW) solar thermal power generating facility utilizing parabolic trough technology. In the 2012 petition, PSH proposes changes to the approved site layout and technology associated with the approved project. PSH proposes to use solar tower technology. Heliostats, elevated mirrors mounted on a pylon guided by a tracking system, will be used to focus the sun's rays on a solar receiver steam generator (SRSG) located atop a 750-foot tall solar tower near the center of each solar field, to create steam. The modified project, which is named the Palen Solar Electric Generating System (PSEGS), will be comprised of two adjacent solar fields and associated facilities with a total combined nominal output of approximately 500 MW. PSH proposes to develop PSEGS in two operational phases: each phase will consist of one solar field and power block with approximately 250 MW of generation capacity. Each solar field will have an array of approximately 85,000 heliostats for a total of 170,000 heliostats for the project. Each phase will also share common facilities, including a common area containing an administration building, warehouse, evaporation ponds, maintenance complex and a meter/valve station for incoming natural gas service to the site, an onsite switchyard, and a single-circuit 230 kV generation tie-line to deliver power to the

electricity grid. Other onsite facilities will include access and maintenance roads (either dirt, gravel or paved), perimeter fencing, tortoise fencing and other ancillary security facilities. PSH does not propose to change the generating capacity of the Energy Commission-approved project, the site access, or the interconnection point at Red Bluff Substation, although there will be a slight re-routing of the generation tie-line near the western end of the route and around Southern California Edison's newly constructed Red Bluff Substation. In addition to approval from the Energy Commission, the amended project will require BLM to complete an environmental review and grant a right-of-way lease.

Over the coming months, the Energy Commission will be holding a number of public workshops and hearings on the proposal to determine whether the modified project should be approved for construction and operation and under what set of conditions. These workshops and hearings will provide the public and tribes, as well as local, state and federal agencies, the opportunity to ask questions about, and provide input on, the proposed modifications. The Energy Commission will issue notices for these workshops and hearings at least 10 days prior to the meeting. If you want to be notified by e-mail whenever a public meeting is scheduled or a document is posted to the project website, you can sign up for the project list server on the web page. Public notices can also be sent to you by mail at your request. Should the Tribe request, Energy Commission staff will arrange for a separate meeting to discuss issues that the Tribe may wish to hold in confidence from the general public.

To view a copy of the Petition to Amend and supplement for this compliance proceeding (09-AFC-7C) and find more information about the project and proceedings, please visit the project website. For access to all project information, including past project certification, go to: <http://www.energy.ca.gov/sitingcases/palen>.

For access to specific project amendment and supplemental information go to: http://www.energy.ca.gov/sitingcases/palen/compliance/2012-12-18_Pettition_to_amend_TN-68910.pdf, and [http://www.energy.ca.gov/sitingcases/palen/compliance/supplement_1_pti/Supplement No 01.pdf](http://www.energy.ca.gov/sitingcases/palen/compliance/supplement_1_pti/Supplement_No_01.pdf).

Please consider reviewing the above referenced project information so that we can promptly proceed to meaningful dialogue that matches the pace of the project compliance process. Staff anticipates publishing its Preliminary Staff Assessment on the petition in May 2013. Staff will be following up this letter with phone calls to ascertain the tribe's level of interest.

The Energy Commission staff looks forward to your comments or questions. If you would like to talk with staff about concerns regarding impacts that Palen Solar Power Plant modifications could have on resources of concern to the Tribe or arrange a

Keeny Escalanti
February 25, 2013
Page 3

meeting, please contact Thomas Gates at (916) 654-5008; Fax: (916) 651-8868; or
thomas.gates@energy.ca.gov.

Sincerely,

A handwritten signature in black ink, appearing to read "Roger E. Johnson". The signature is fluid and cursive, with the first name "Roger" being the most prominent.

ROGER E. JOHNSON
Deputy Director
Siting, Transmission
and Environmental Protection Division

Energy Commission Tribal Liaison

Enclosures: Site Vicinity Map
PSEGS Facility Boundary Map

CALIFORNIA ENERGY COMMISSION

1516 NINTH STREET
SACRAMENTO, CA 95814-5512
www.energy.ca.gov



February 25, 2013

Linda Otero, Director
AhaMaKav Cultural Society
Fort Mojave Indian Tribe
P.O. Box 5990
Mohave Valley, AZ 86440

RE: Palen Solar Electric Generating System (09-AFC-7C) - Invitation to Participate in California Energy Commission Tribal Consultation

Dear Ms. Otero,

Your name was provided to the California Energy Commission (Energy Commission) by the Native American Heritage Commission (NAHC) in a letter dated February 13, 2013, as a representative of a Native American community who might be interested in the change in the design of the Palen Solar Power Project. The project is proposed to be located on 3,794 acres of Bureau of Land Management (BLM) land in Riverside County, California and is located approximately ¼ mile north of Interstate 10 near the Corn Springs Road exit, ten miles east of Desert Center and approximately halfway between the cities of Indio and Blythe. This letter provides general information concerning the project design changes, includes attached exhibits depicting the vicinity and project site location, and invites the tribe to participate in Energy Commission consultations with affiliated tribes.

On December 17, 2012, Palen Solar Holdings, LLC (PSH) filed a Petition to Amend with the Energy Commission requesting to modify the Palen Solar Power Project. The project, as licensed on December 15, 2010 by the Energy Commission, is a 500-megawatt (MW) solar thermal power generating facility utilizing parabolic trough technology. In the 2012 petition, PSH proposes changes to the approved site layout and technology associated with the approved project. PSH proposes to use solar tower technology. Heliostats, elevated mirrors mounted on a pylon guided by a tracking system, will be used to focus the sun's rays on a solar receiver steam generator (SRSG) located atop a 750-foot tall solar tower near the center of each solar field, to create steam. The modified project, which is named the Palen Solar Electric Generating System (PSEGS), will be comprised of two adjacent solar fields and associated facilities with a total combined nominal output of approximately 500 MW. PSH proposes to develop PSEGS in two operational phases: each phase will consist of one solar field and power block with approximately 250 MW of generation capacity. Each solar field will have an array of approximately 85,000 heliostats for a total of 170,000 heliostats for the project. Each phase will also share common facilities, including a common area containing an administration building, warehouse, evaporation ponds, maintenance complex and a meter/valve station for incoming natural gas service to the site, an onsite switchyard, and a single-circuit 230 kV generation tie-line to deliver power to the

electricity grid. Other onsite facilities will include access and maintenance roads (either dirt, gravel or paved), perimeter fencing, tortoise fencing and other ancillary security facilities. PSH does not propose to change the generating capacity of the Energy Commission-approved project, the site access, or the interconnection point at Red Bluff Substation, although there will be a slight re-routing of the generation tie-line near the western end of the route and around Southern California Edison's newly constructed Red Bluff Substation. In addition to approval from the Energy Commission, the amended project will require BLM to complete an environmental review and grant a right-of-way lease.

Over the coming months, the Energy Commission will be holding a number of public workshops and hearings on the proposal to determine whether the modified project should be approved for construction and operation and under what set of conditions. These workshops and hearings will provide the public and tribes, as well as local, state and federal agencies, the opportunity to ask questions about, and provide input on, the proposed modifications. The Energy Commission will issue notices for these workshops and hearings at least 10 days prior to the meeting. If you want to be notified by e-mail whenever a public meeting is scheduled or a document is posted to the project website, you can sign up for the project list server on the web page. Public notices can also be sent to you by mail at your request. Should the Tribe request, Energy Commission staff will arrange for a separate meeting to discuss issues that the Tribe may wish to hold in confidence from the general public.

To view a copy of the Petition to Amend and supplement for this compliance proceeding (09-AFC-7C) and find more information about the project and proceedings, please visit the project website. For access to all project information, including past project certification, go to: <http://www.energy.ca.gov/sitingcases/palen>.

For access to specific project amendment and supplemental information go to: http://www.energy.ca.gov/sitingcases/palen/compliance/2012-12-18_Pettition_to_amend_TN-68910.pdf, and http://www.energy.ca.gov/sitingcases/palen/compliance/supplement_1_pti/Supplement_No_01.pdf.

Please consider reviewing the above referenced project information so that we can promptly proceed to meaningful dialogue that matches the pace of the project compliance process. Staff anticipates publishing its Preliminary Staff Assessment on the petition in May 2013. Staff will be following up this letter with phone calls to ascertain the tribe's level of interest.

The Energy Commission staff looks forward to your comments or questions. If you would like to talk with staff about concerns regarding impacts that Palen Solar Power Plant modifications could have on resources of concern to the Tribe or arrange a

Linda Otero
February 25, 2013
Page 3

meeting, please contact Thomas Gates at (916) 654-5008; Fax: (916) 651-8868; or
thomas.gates@energy.ca.gov.

Sincerely,

A handwritten signature in black ink, appearing to read "Roger E. Johnson". The signature is fluid and cursive, with a long horizontal stroke at the end.

ROGER E. JOHNSON
Deputy Director
Siting, Transmission
and Environmental Protection Division

Energy Commission Tribal Liaison

Enclosures: Site Vicinity Map
PSEGS Facility Boundary Map

CALIFORNIA ENERGY COMMISSION

1516 NINTH STREET
SACRAMENTO, CA 95814-5512
www.energy.ca.gov



February 25, 2013

San Manuel Band of Mission Indians
Daniel McCarthy, Director
Cultural Resources Department
26569 Community Center Drive
Highland, CA 92346

RE: Palen Solar Electric Generating System (09-AFC-7C) - Invitation to Participate in California Energy Commission Tribal Consultation

Dear Mr. McCarthy,

Your name was provided to the California Energy Commission (Energy Commission) by the Native American Heritage Commission (NAHC) in a letter dated February 13, 2013, as a representative of a Native American community who might be interested in the change in the design of the Palen Solar Power Project. The project is proposed to be located on 3,794 acres of Bureau of Land Management (BLM) land in Riverside County, California and is located approximately ¼ mile north of Interstate 10 near the Corn Springs Road exit, ten miles east of Desert Center and approximately halfway between the cities of Indio and Blythe. This letter provides general information concerning the project design changes, includes attached exhibits depicting the vicinity and project site location, and invites the tribe to participate in Energy Commission consultations with affiliated tribes.

On December 17, 2012, Palen Solar Holdings, LLC (PSH) filed a Petition to Amend with the Energy Commission requesting to modify the Palen Solar Power Project. The project, as licensed on December 15, 2010 by the Energy Commission, is a 500-megawatt (MW) solar thermal power generating facility utilizing parabolic trough technology. In the 2012 petition, PSH proposes changes to the approved site layout and technology associated with the approved project. PSH proposes to use solar tower technology. Heliostats, elevated mirrors mounted on a pylon guided by a tracking system, will be used to focus the sun's rays on a solar receiver steam generator (SRSG) located atop a 750-foot tall solar tower near the center of each solar field, to create steam. The modified project, which is named the Palen Solar Electric Generating System (PSEGS), will be comprised of two adjacent solar fields and associated facilities with a total combined nominal output of approximately 500 MW. PSH proposes to develop PSEGS in two operational phases: each phase will consist of one solar field and power block with approximately 250 MW of generation capacity. Each solar field will have an array of approximately 85,000 heliostats for a total of 170,000 heliostats for the project. Each phase will also share common facilities, including a common area containing an administration building, warehouse, evaporation ponds, maintenance complex and a meter/valve station for incoming natural gas service to the site, an onsite switchyard, and a single-circuit 230 kV generation tie-line to deliver power to the

electricity grid. Other onsite facilities will include access and maintenance roads (either dirt, gravel or paved), perimeter fencing, tortoise fencing and other ancillary security facilities. PSH does not propose to change the generating capacity of the Energy Commission-approved project, the site access, or the interconnection point at Red Bluff Substation, although there will be a slight re-routing of the generation tie-line near the western end of the route and around Southern California Edison's newly constructed Red Bluff Substation. In addition to approval from the Energy Commission, the amended project will require BLM to complete an environmental review and grant a right-of-way lease.

Over the coming months, the Energy Commission will be holding a number of public workshops and hearings on the proposal to determine whether the modified project should be approved for construction and operation and under what set of conditions. These workshops and hearings will provide the public and tribes, as well as local, state and federal agencies, the opportunity to ask questions about, and provide input on, the proposed modifications. The Energy Commission will issue notices for these workshops and hearings at least 10 days prior to the meeting. If you want to be notified by e-mail whenever a public meeting is scheduled or a document is posted to the project website, you can sign up for the project list server on the web page. Public notices can also be sent to you by mail at your request. Should the Tribe request, Energy Commission staff will arrange for a separate meeting to discuss issues that the Tribe may wish to hold in confidence from the general public.

To view a copy of the Petition to Amend and supplement for this compliance proceeding (09-AFC-7C) and find more information about the project and proceedings, please visit the project website. For access to all project information, including past project certification, go to: <http://www.energy.ca.gov/sitingcases/palen>.

For access to specific project amendment and supplemental information go to: http://www.energy.ca.gov/sitingcases/palen/compliance/2012-12-18_Pettition_to_amend_TN-68910.pdf, and [http://www.energy.ca.gov/sitingcases/palen/compliance/supplement_1_pti/Supplement No 01.pdf](http://www.energy.ca.gov/sitingcases/palen/compliance/supplement_1_pti/Supplement_No_01.pdf).

Please consider reviewing the above referenced project information so that we can promptly proceed to meaningful dialogue that matches the pace of the project compliance process. Staff anticipates publishing its Preliminary Staff Assessment on the petition in May 2013. Staff will be following up this letter with phone calls to ascertain the tribe's level of interest.

The Energy Commission staff looks forward to your comments or questions. If you would like to talk with staff about concerns regarding impacts that Palen Solar Power Plant modifications could have on resources of concern to the Tribe or arrange a

Daniel McCarthy
February 25, 2013
Page 3

meeting, please contact Thomas Gates at (916) 654-5008; Fax: (916) 651-8868; or
thomas.gates@energy.ca.gov.

Sincerely,

A handwritten signature in black ink, appearing to read "Roger E. Johnson". The signature is fluid and cursive, with the first name "Roger" being the most prominent.

ROGER E. JOHNSON
Deputy Director
Siting, Transmission
and Environmental Protection Division

Energy Commission Tribal Liaison

Enclosures: Site Vicinity Map
PSEGS Facility Boundary Map

CALIFORNIA ENERGY COMMISSION

1516 NINTH STREET
SACRAMENTO, CA 95814-5512
www.energy.ca.gov



February 25, 2013

Cabazon Band of Mission Indians
Judy Stapp, Director of Cultural Affairs
84-245 Indio Springs
Indio, CA 92203-3499

RE: Palen Solar Electric Generating System (09-AFC-7C) - Invitation to Participate in California Energy Commission Tribal Consultation

Dear Ms. Stapp,

Your name was provided to the California Energy Commission (Energy Commission) by the Native American Heritage Commission (NAHC) in a letter dated February 13, 2013, as a representative of a Native American community who might be interested in the change in the design of the Palen Solar Power Project. The project is proposed to be located on 3,794 acres of Bureau of Land Management (BLM) land in Riverside County, California and is located approximately ¼ mile north of Interstate 10 near the Corn Springs Road exit, ten miles east of Desert Center and approximately halfway between the cities of Indio and Blythe. This letter provides general information concerning the project design changes, includes attached exhibits depicting the vicinity and project site location, and invites the tribe to participate in Energy Commission consultations with affiliated tribes.

On December 17, 2012, Palen Solar Holdings, LLC (PSH) filed a Petition to Amend with the Energy Commission requesting to modify the Palen Solar Power Project. The project, as licensed on December 15, 2010 by the Energy Commission, is a 500-megawatt (MW) solar thermal power generating facility utilizing parabolic trough technology. In the 2012 petition, PSH proposes changes to the approved site layout and technology associated with the approved project. PSH proposes to use solar tower technology. Heliostats, elevated mirrors mounted on a pylon guided by a tracking system, will be used to focus the sun's rays on a solar receiver steam generator (SRSG) located atop a 750-foot tall solar tower near the center of each solar field, to create steam. The modified project, which is named the Palen Solar Electric Generating System (PSEGS), will be comprised of two adjacent solar fields and associated facilities with a total combined nominal output of approximately 500 MW. PSH proposes to develop PSEGS in two operational phases: each phase will consist of one solar field and power block with approximately 250 MW of generation capacity. Each solar field will have an array of approximately 85,000 heliostats for a total of 170,000 heliostats for the project. Each phase will also share common facilities, including a common area containing an administration building, warehouse, evaporation ponds, maintenance complex and a meter/valve station for incoming natural gas service to the site, an onsite switchyard, and a single-circuit 230 kV generation tie-line to deliver power to the

electricity grid. Other onsite facilities will include access and maintenance roads (either dirt, gravel or paved), perimeter fencing, tortoise fencing and other ancillary security facilities. PSH does not propose to change the generating capacity of the Energy Commission-approved project, the site access, or the interconnection point at Red Bluff Substation, although there will be a slight re-routing of the generation tie-line near the western end of the route and around Southern California Edison's newly constructed Red Bluff Substation. In addition to approval from the Energy Commission, the amended project will require BLM to complete an environmental review and grant a right-of-way lease.

Over the coming months, the Energy Commission will be holding a number of public workshops and hearings on the proposal to determine whether the modified project should be approved for construction and operation and under what set of conditions. These workshops and hearings will provide the public and tribes, as well as local, state and federal agencies, the opportunity to ask questions about, and provide input on, the proposed modifications. The Energy Commission will issue notices for these workshops and hearings at least 10 days prior to the meeting. If you want to be notified by e-mail whenever a public meeting is scheduled or a document is posted to the project website, you can sign up for the project list server on the web page. Public notices can also be sent to you by mail at your request. Should the Tribe request, Energy Commission staff will arrange for a separate meeting to discuss issues that the Tribe may wish to hold in confidence from the general public.

To view a copy of the Petition to Amend and supplement for this compliance proceeding (09-AFC-7C) and find more information about the project and proceedings, please visit the project website. For access to all project information, including past project certification, go to: <http://www.energy.ca.gov/sitingcases/palen>.

For access to specific project amendment and supplemental information go to: http://www.energy.ca.gov/sitingcases/palen/compliance/2012-12-18_Pettition_to_amend_TN-68910.pdf, and [http://www.energy.ca.gov/sitingcases/palen/compliance/supplement_1_pti/Supplement No 01.pdf](http://www.energy.ca.gov/sitingcases/palen/compliance/supplement_1_pti/Supplement_No_01.pdf).

Please consider reviewing the above referenced project information so that we can promptly proceed to meaningful dialogue that matches the pace of the project compliance process. Staff anticipates publishing its Preliminary Staff Assessment on the petition in May 2013. Staff will be following up this letter with phone calls to ascertain the tribe's level of interest.

The Energy Commission staff looks forward to your comments or questions. If you would like to talk with staff about concerns regarding impacts that Palen Solar Power Plant modifications could have on resources of concern to the Tribe or arrange a

Judy Stapp
February 25, 2013
Page 3

meeting, please contact Thomas Gates at (916) 654-5008; Fax: (916) 651-8868; or
thomas.gates@energy.ca.gov.

Sincerely,

A handwritten signature in black ink, appearing to read "Roger E. Johnson". The signature is fluid and cursive, with a long horizontal stroke at the end.

ROGER E. JOHNSON
Deputy Director
Siting, Transmission
and Environmental Protection Division

Energy Commission Tribal Liaison

Enclosures: Site Vicinity Map
PSEGS Facility Boundary Map

CALIFORNIA ENERGY COMMISSION

1516 NINTH STREET
SACRAMENTO, CA 95814-5512
www.energy.ca.gov



February 25, 2013

Nora McDowell, Cultural Resources Coordinator
Fort Mojave Indian Tribe
500 Merriman Ave
Needles, CA 92363

RE: Palen Solar Electric Generating System (09-AFC-7C) - Invitation to Participate in California Energy Commission Tribal Consultation

Dear Ms. McDowell,

Your name was provided to the California Energy Commission (Energy Commission) by the Native American Heritage Commission (NAHC) in a letter dated February 13, 2013, as a representative of a Native American community who might be interested in the change in the design of the Palen Solar Power Project. The project is proposed to be located on 3,794 acres of Bureau of Land Management (BLM) land in Riverside County, California and is located approximately ¼ mile north of Interstate 10 near the Corn Springs Road exit, ten miles east of Desert Center and approximately halfway between the cities of Indio and Blythe. This letter provides general information concerning the project design changes, includes attached exhibits depicting the vicinity and project site location, and invites the tribe to participate in Energy Commission consultations with affiliated tribes.

On December 17, 2012, Palen Solar Holdings, LLC (PSH) filed a Petition to Amend with the Energy Commission requesting to modify the Palen Solar Power Project. The project, as licensed on December 15, 2010 by the Energy Commission, is a 500-megawatt (MW) solar thermal power generating facility utilizing parabolic trough technology. In the 2012 petition, PSH proposes changes to the approved site layout and technology associated with the approved project. PSH proposes to use solar tower technology. Heliostats, elevated mirrors mounted on a pylon guided by a tracking system, will be used to focus the sun's rays on a solar receiver steam generator (SRSG) located atop a 750-foot tall solar tower near the center of each solar field, to create steam. The modified project, which is named the Palen Solar Electric Generating System (PSEGS), will be comprised of two adjacent solar fields and associated facilities with a total combined nominal output of approximately 500 MW. PSH proposes to develop PSEGS in two operational phases: each phase will consist of one solar field and power block with approximately 250 MW of generation capacity. Each solar field will have an array of approximately 85,000 heliostats for a total of 170,000 heliostats for the project. Each phase will also share common facilities, including a common area containing an administration building, warehouse, evaporation ponds, maintenance complex and a meter/valve station for incoming natural gas service to the site, an onsite switchyard, and a single-circuit 230 kV generation tie-line to deliver power to the

electricity grid. Other onsite facilities will include access and maintenance roads (either dirt, gravel or paved), perimeter fencing, tortoise fencing and other ancillary security facilities. PSH does not propose to change the generating capacity of the Energy Commission-approved project, the site access, or the interconnection point at Red Bluff Substation, although there will be a slight re-routing of the generation tie-line near the western end of the route and around Southern California Edison's newly constructed Red Bluff Substation. In addition to approval from the Energy Commission, the amended project will require BLM to complete an environmental review and grant a right-of-way lease.

Over the coming months, the Energy Commission will be holding a number of public workshops and hearings on the proposal to determine whether the modified project should be approved for construction and operation and under what set of conditions. These workshops and hearings will provide the public and tribes, as well as local, state and federal agencies, the opportunity to ask questions about, and provide input on, the proposed modifications. The Energy Commission will issue notices for these workshops and hearings at least 10 days prior to the meeting. If you want to be notified by e-mail whenever a public meeting is scheduled or a document is posted to the project website, you can sign up for the project list server on the web page. Public notices can also be sent to you by mail at your request. Should the Tribe request, Energy Commission staff will arrange for a separate meeting to discuss issues that the Tribe may wish to hold in confidence from the general public.

To view a copy of the Petition to Amend and supplement for this compliance proceeding (09-AFC-7C) and find more information about the project and proceedings, please visit the project website. For access to all project information, including past project certification, go to: <http://www.energy.ca.gov/sitingcases/palen>.

For access to specific project amendment and supplemental information go to: http://www.energy.ca.gov/sitingcases/palen/compliance/2012-12-18_Pettition_to_amend_TN-68910.pdf, and [http://www.energy.ca.gov/sitingcases/palen/compliance/supplement_1_pti/Supplement No 01.pdf](http://www.energy.ca.gov/sitingcases/palen/compliance/supplement_1_pti/Supplement_No_01.pdf).

Please consider reviewing the above referenced project information so that we can promptly proceed to meaningful dialogue that matches the pace of the project compliance process. Staff anticipates publishing its Preliminary Staff Assessment on the petition in May 2013. Staff will be following up this letter with phone calls to ascertain the tribe's level of interest.

The Energy Commission staff looks forward to your comments or questions. If you would like to talk with staff about concerns regarding impacts that Palen Solar Power Plant modifications could have on resources of concern to the Tribe or arrange a

Nora McDowell
February 25, 2013
Page 3

meeting, please contact Thomas Gates at (916) 654-5008; Fax: (916) 651-8868; or
thomas.gates@energy.ca.gov.

Sincerely,

A handwritten signature in black ink, appearing to read "Roger E. Johnson". The signature is fluid and cursive, with a long horizontal stroke at the end.

ROGER E. JOHNSON
Deputy Director
Siting, Transmission
and Environmental Protection Division

Energy Commission Tribal Liaison

Enclosures: Site Vicinity Map
PSEGS Facility Boundary Map

CALIFORNIA ENERGY COMMISSION

1516 NINTH STREET
SACRAMENTO, CA 95814-5512
www.energy.ca.gov



February 25, 2013

Patricia Tuck, THPO
Agua Caliente Band of Cahuilla Indians
5401 Dinah Shore Drive
Palm Springs, CA 92264

RE: Palen Solar Electric Generating System (09-AFC-7C) - Invitation to Participate in California Energy Commission Tribal Consultation

Dear Ms. Tuck,

Your name was provided to the California Energy Commission (Energy Commission) by the Native American Heritage Commission (NAHC) in a letter dated February 13, 2013, as a representative of a Native American community who might be interested in the change in the design of the Palen Solar Power Project. The project is proposed to be located on 3,794 acres of Bureau of Land Management (BLM) land in Riverside County, California and is located approximately ¼ mile north of Interstate 10 near the Corn Springs Road exit, ten miles east of Desert Center and approximately halfway between the cities of Indio and Blythe. This letter provides general information concerning the project design changes, includes attached exhibits depicting the vicinity and project site location, and invites the tribe to participate in Energy Commission consultations with affiliated tribes.

On December 17, 2012, Palen Solar Holdings, LLC (PSH) filed a Petition to Amend with the Energy Commission requesting to modify the Palen Solar Power Project. The project, as licensed on December 15, 2010 by the Energy Commission, is a 500-megawatt (MW) solar thermal power generating facility utilizing parabolic trough technology. In the 2012 petition, PSH proposes changes to the approved site layout and technology associated with the approved project. PSH proposes to use solar tower technology. Heliostats, elevated mirrors mounted on a pylon guided by a tracking system, will be used to focus the sun's rays on a solar receiver steam generator (SRSG) located atop a 750-foot tall solar tower near the center of each solar field, to create steam. The modified project, which is named the Palen Solar Electric Generating System (PSEGS), will be comprised of two adjacent solar fields and associated facilities with a total combined nominal output of approximately 500 MW. PSH proposes to develop PSEGS in two operational phases: each phase will consist of one solar field and power block with approximately 250 MW of generation capacity. Each solar field will have an array of approximately 85,000 heliostats for a total of 170,000 heliostats for the project. Each phase will also share common facilities, including a common area containing an administration building, warehouse, evaporation ponds, maintenance complex and a meter/valve station for incoming natural gas service to the site, an onsite switchyard, and a single-circuit 230 kV generation tie-line to deliver power to the

electricity grid. Other onsite facilities will include access and maintenance roads (either dirt, gravel or paved), perimeter fencing, tortoise fencing and other ancillary security facilities. PSH does not propose to change the generating capacity of the Energy Commission-approved project, the site access, or the interconnection point at Red Bluff Substation, although there will be a slight re-routing of the generation tie-line near the western end of the route and around Southern California Edison's newly constructed Red Bluff Substation. In addition to approval from the Energy Commission, the amended project will require BLM to complete an environmental review and grant a right-of-way lease.

Over the coming months, the Energy Commission will be holding a number of public workshops and hearings on the proposal to determine whether the modified project should be approved for construction and operation and under what set of conditions. These workshops and hearings will provide the public and tribes, as well as local, state and federal agencies, the opportunity to ask questions about, and provide input on, the proposed modifications. The Energy Commission will issue notices for these workshops and hearings at least 10 days prior to the meeting. If you want to be notified by e-mail whenever a public meeting is scheduled or a document is posted to the project website, you can sign up for the project list server on the web page. Public notices can also be sent to you by mail at your request. Should the Tribe request, Energy Commission staff will arrange for a separate meeting to discuss issues that the Tribe may wish to hold in confidence from the general public.

To view a copy of the Petition to Amend and supplement for this compliance proceeding (09-AFC-7C) and find more information about the project and proceedings, please visit the project website. For access to all project information, including past project certification, go to: <http://www.energy.ca.gov/sitingcases/palen>.

For access to specific project amendment and supplemental information go to: http://www.energy.ca.gov/sitingcases/palen/compliance/2012-12-18_Pettition_to_amend_TN-68910.pdf, and [http://www.energy.ca.gov/sitingcases/palen/compliance/supplement_1_pti/Supplement No 01.pdf](http://www.energy.ca.gov/sitingcases/palen/compliance/supplement_1_pti/Supplement_No_01.pdf).

Please consider reviewing the above referenced project information so that we can promptly proceed to meaningful dialogue that matches the pace of the project compliance process. Staff anticipates publishing its Preliminary Staff Assessment on the petition in May 2013. Staff will be following up this letter with phone calls to ascertain the tribe's level of interest.

The Energy Commission staff looks forward to your comments or questions. If you would like to talk with staff about concerns regarding impacts that Palen Solar Power Plant modifications could have on resources of concern to the Tribe or arrange a

Patricia Tuck
February 25, 2013
Page 3

meeting, please contact Thomas Gates at (916) 654-5008; Fax: (916) 651-8868; or
thomas.gates@energy.ca.gov.

Sincerely,

A handwritten signature in black ink, appearing to read "Roger E. Johnson". The signature is fluid and cursive, with a large initial "R" and "J".

ROGER E. JOHNSON
Deputy Director
Siting, Transmission
and Environmental Protection Division

Energy Commission Tribal Liaison

Enclosures: Site Vicinity Map
PSEGS Facility Boundary Map

CALIFORNIA ENERGY COMMISSION

1516 NINTH STREET
SACRAMENTO, CA 95814-5512
www.energy.ca.gov



February 25, 2013

John Bathke, THPO
Quechan Indian Nation
P.O. Box 1899
Yuma, AZ 85366

RE: Palen Solar Electric Generating System (09-AFC-7C) - Invitation to Participate in California Energy Commission Tribal Consultation

Dear Mr. Bathke,

Your name was provided to the California Energy Commission (Energy Commission) by the Native American Heritage Commission (NAHC) in a letter dated February 13, 2013, as a representative of a Native American community who might be interested in the change in the design of the Palen Solar Power Project. The project is proposed to be located on 3,794 acres of Bureau of Land Management (BLM) land in Riverside County, California and is located approximately ¼ mile north of Interstate 10 near the Corn Springs Road exit, ten miles east of Desert Center and approximately halfway between the cities of Indio and Blythe. This letter provides general information concerning the project design changes, includes attached exhibits depicting the vicinity and project site location, and invites the tribe to participate in Energy Commission consultations with affiliated tribes.

On December 17, 2012, Palen Solar Holdings, LLC (PSH) filed a Petition to Amend with the Energy Commission requesting to modify the Palen Solar Power Project. The project, as licensed on December 15, 2010 by the Energy Commission, is a 500-megawatt (MW) solar thermal power generating facility utilizing parabolic trough technology. In the 2012 petition, PSH proposes changes to the approved site layout and technology associated with the approved project. PSH proposes to use solar tower technology. Heliostats, elevated mirrors mounted on a pylon guided by a tracking system, will be used to focus the sun's rays on a solar receiver steam generator (SRSG) located atop a 750-foot tall solar tower near the center of each solar field, to create steam. The modified project, which is named the Palen Solar Electric Generating System (PSEGS), will be comprised of two adjacent solar fields and associated facilities with a total combined nominal output of approximately 500 MW. PSH proposes to develop PSEGS in two operational phases: each phase will consist of one solar field and power block with approximately 250 MW of generation capacity. Each solar field will have an array of approximately 85,000 heliostats for a total of 170,000 heliostats for the project. Each phase will also share common facilities, including a common area containing an administration building, warehouse, evaporation ponds, maintenance complex and a meter/valve station for incoming natural gas service to the site, an onsite switchyard, and a single-circuit 230 kV generation tie-line to deliver power to the

electricity grid. Other onsite facilities will include access and maintenance roads (either dirt, gravel or paved), perimeter fencing, tortoise fencing and other ancillary security facilities. PSH does not propose to change the generating capacity of the Energy Commission-approved project, the site access, or the interconnection point at Red Bluff Substation, although there will be a slight re-routing of the generation tie-line near the western end of the route and around Southern California Edison's newly constructed Red Bluff Substation. In addition to approval from the Energy Commission, the amended project will require BLM to complete an environmental review and grant a right-of-way lease.

Over the coming months, the Energy Commission will be holding a number of public workshops and hearings on the proposal to determine whether the modified project should be approved for construction and operation and under what set of conditions. These workshops and hearings will provide the public and tribes, as well as local, state and federal agencies, the opportunity to ask questions about, and provide input on, the proposed modifications. The Energy Commission will issue notices for these workshops and hearings at least 10 days prior to the meeting. If you want to be notified by e-mail whenever a public meeting is scheduled or a document is posted to the project website, you can sign up for the project list server on the web page. Public notices can also be sent to you by mail at your request. Should the Tribe request, Energy Commission staff will arrange for a separate meeting to discuss issues that the Tribe may wish to hold in confidence from the general public.

To view a copy of the Petition to Amend and supplement for this compliance proceeding (09-AFC-7C) and find more information about the project and proceedings, please visit the project website. For access to all project information, including past project certification, go to: <http://www.energy.ca.gov/sitingcases/palen>.

For access to specific project amendment and supplemental information go to: http://www.energy.ca.gov/sitingcases/palen/compliance/2012-12-18_Pettition_to_amend_TN-68910.pdf, and [http://www.energy.ca.gov/sitingcases/palen/compliance/supplement_1_pti/Supplement No 01.pdf](http://www.energy.ca.gov/sitingcases/palen/compliance/supplement_1_pti/Supplement_No_01.pdf).

Please consider reviewing the above referenced project information so that we can promptly proceed to meaningful dialogue that matches the pace of the project compliance process. Staff anticipates publishing its Preliminary Staff Assessment on the petition in May 2013. Staff will be following up this letter with phone calls to ascertain the tribe's level of interest.

The Energy Commission staff looks forward to your comments or questions. If you would like to talk with staff about concerns regarding impacts that Palen Solar Power Plant modifications could have on resources of concern to the Tribe or arrange a

John Bathke
February 25, 2013
Page 3

meeting, please contact Thomas Gates at (916) 654-5008; Fax: (916) 651-8868; or
thomas.gates@energy.ca.gov.

Sincerely,

A handwritten signature in black ink, appearing to read "Roger E. Johnson". The signature is fluid and cursive, with a large initial "R" and "J".

ROGER E. JOHNSON
Deputy Director
Siting, Transmission
and Environmental Protection Division

Energy Commission Tribal Liaison

Enclosures: Site Vicinity Map
PSEGS Facility Boundary Map

CALIFORNIA ENERGY COMMISSION

1516 NINTH STREET
SACRAMENTO, CA 95814-5512
www.energy.ca.gov



February 25, 2013

Preston J. Arrow-weed
Ah-Mut-Pipa Foundation
P.O. Box 160
Bard, CA 92222

RE: Palen Solar Electric Generating System (09-AFC-7C) - Invitation to Participate in California Energy Commission Tribal Consultation

Dear Mr. Arrow-weed,

Your name was provided to the California Energy Commission (Energy Commission) by the Native American Heritage Commission (NAHC) in a letter dated February 13, 2013, as a representative of a Native American community who might be interested in the change in the design of the Palen Solar Power Project. The project is proposed to be located on 3,794 acres of Bureau of Land Management (BLM) land in Riverside County, California and is located approximately ¼ mile north of Interstate 10 near the Corn Springs Road exit, ten miles east of Desert Center and approximately halfway between the cities of Indio and Blythe. This letter provides general information concerning the project design changes, includes attached exhibits depicting the vicinity and project site location, and invites the tribe to participate in Energy Commission consultations with affiliated tribes.

On December 17, 2012, Palen Solar Holdings, LLC (PSH) filed a Petition to Amend with the Energy Commission requesting to modify the Palen Solar Power Project. The project, as licensed on December 15, 2010 by the Energy Commission, is a 500-megawatt (MW) solar thermal power generating facility utilizing parabolic trough technology. In the 2012 petition, PSH proposes changes to the approved site layout and technology associated with the approved project. PSH proposes to use solar tower technology. Heliostats, elevated mirrors mounted on a pylon guided by a tracking system, will be used to focus the sun's rays on a solar receiver steam generator (SRSG) located atop a 750-foot tall solar tower near the center of each solar field, to create steam. The modified project, which is named the Palen Solar Electric Generating System (PSEGS), will be comprised of two adjacent solar fields and associated facilities with a total combined nominal output of approximately 500 MW. PSH proposes to develop PSEGS in two operational phases: each phase will consist of one solar field and power block with approximately 250 MW of generation capacity. Each solar field will have an array of approximately 85,000 heliostats for a total of 170,000 heliostats for the project. Each phase will also share common facilities, including a common area containing an administration building, warehouse, evaporation ponds, maintenance complex and a meter/valve station for incoming natural gas service to the site, an onsite switchyard, and a single-circuit 230 kV generation tie-line to deliver power to the

electricity grid. Other onsite facilities will include access and maintenance roads (either dirt, gravel or paved), perimeter fencing, tortoise fencing and other ancillary security facilities. PSH does not propose to change the generating capacity of the Energy Commission-approved project, the site access, or the interconnection point at Red Bluff Substation, although there will be a slight re-routing of the generation tie-line near the western end of the route and around Southern California Edison's newly constructed Red Bluff Substation. In addition to approval from the Energy Commission, the amended project will require BLM to complete an environmental review and grant a right-of-way lease.

Over the coming months, the Energy Commission will be holding a number of public workshops and hearings on the proposal to determine whether the modified project should be approved for construction and operation and under what set of conditions. These workshops and hearings will provide the public and tribes, as well as local, state and federal agencies, the opportunity to ask questions about, and provide input on, the proposed modifications. The Energy Commission will issue notices for these workshops and hearings at least 10 days prior to the meeting. If you want to be notified by e-mail whenever a public meeting is scheduled or a document is posted to the project website, you can sign up for the project list server on the web page. Public notices can also be sent to you by mail at your request. Should the Tribe request, Energy Commission staff will arrange for a separate meeting to discuss issues that the Tribe may wish to hold in confidence from the general public.

To view a copy of the Petition to Amend and supplement for this compliance proceeding (09-AFC-7C) and find more information about the project and proceedings, please visit the project website. For access to all project information, including past project certification, go to: <http://www.energy.ca.gov/sitingcases/palen>.

For access to specific project amendment and supplemental information go to: http://www.energy.ca.gov/sitingcases/palen/compliance/2012-12-18_Pettition_to_amend_TN-68910.pdf, and [http://www.energy.ca.gov/sitingcases/palen/compliance/supplement_1_pti/Supplement No 01.pdf](http://www.energy.ca.gov/sitingcases/palen/compliance/supplement_1_pti/Supplement_No_01.pdf).

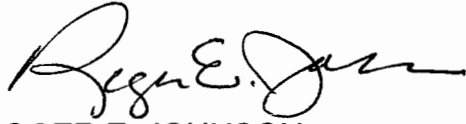
Please consider reviewing the above referenced project information so that we can promptly proceed to meaningful dialogue that matches the pace of the project compliance process. Staff anticipates publishing its Preliminary Staff Assessment on the petition in May 2013. Staff will be following up this letter with phone calls to ascertain the tribe's level of interest.

The Energy Commission staff looks forward to your comments or questions. If you would like to talk with staff about concerns regarding impacts that Palen Solar Power Plant modifications could have on resources of concern to the Tribe or arrange a

Preston Arrow-weed
February 25, 2013
Page 3

meeting, please contact Thomas Gates at (916) 654-5008; Fax: (916) 651-8868; or
thomas.gates@energy.ca.gov.

Sincerely,

A handwritten signature in black ink, appearing to read "Roger E. Johnson". The signature is fluid and cursive, with the first name "Roger" being the most prominent.

ROGER E. JOHNSON
Deputy Director
Siting, Transmission
and Environmental Protection Division

Energy Commission Tribal Liaison

Enclosures: Site Vicinity Map
PSEGS Facility Boundary Map

CALIFORNIA ENERGY COMMISSION

1516 NINTH STREET
SACRAMENTO, CA 95814-5512
www.energy.ca.gov



February 25, 2013

H. Jill McCormick, Tribal Archaeologist
Cocopah Indian Reservation
County 15th & Avenue G
Sommerton, AZ 85350

RE: Palen Solar Electric Generating System (09-AFC-7C) - Invitation to Participate in California Energy Commission Tribal Consultation

Dear Ms. McCormick,

Your name was provided to the California Energy Commission (Energy Commission) by the Native American Heritage Commission (NAHC) in a letter dated February 13, 2013, as a representative of a Native American community who might be interested in the change in the design of the Palen Solar Power Project. The project is proposed to be located on 3,794 acres of Bureau of Land Management (BLM) land in Riverside County, California and is located approximately ¼ mile north of Interstate 10 near the Corn Springs Road exit, ten miles east of Desert Center and approximately halfway between the cities of Indio and Blythe. This letter provides general information concerning the project design changes, includes attached exhibits depicting the vicinity and project site location, and invites the tribe to participate in Energy Commission consultations with affiliated tribes.

On December 17, 2012, Palen Solar Holdings, LLC (PSH) filed a Petition to Amend with the Energy Commission requesting to modify the Palen Solar Power Project. The project, as licensed on December 15, 2010 by the Energy Commission, is a 500-megawatt (MW) solar thermal power generating facility utilizing parabolic trough technology. In the 2012 petition, PSH proposes changes to the approved site layout and technology associated with the approved project. PSH proposes to use solar tower technology. Heliostats, elevated mirrors mounted on a pylon guided by a tracking system, will be used to focus the sun's rays on a solar receiver steam generator (SRSG) located atop a 750-foot tall solar tower near the center of each solar field, to create steam. The modified project, which is named the Palen Solar Electric Generating System (PSEGS), will be comprised of two adjacent solar fields and associated facilities with a total combined nominal output of approximately 500 MW. PSH proposes to develop PSEGS in two operational phases: each phase will consist of one solar field and power block with approximately 250 MW of generation capacity. Each solar field will have an array of approximately 85,000 heliostats for a total of 170,000 heliostats for the project. Each phase will also share common facilities, including a common area containing an administration building, warehouse, evaporation ponds, maintenance complex and a meter/valve station for incoming natural gas service to the site, an onsite switchyard, and a single-circuit 230 kV generation tie-line to deliver power to the

electricity grid. Other onsite facilities will include access and maintenance roads (either dirt, gravel or paved), perimeter fencing, tortoise fencing and other ancillary security facilities. PSH does not propose to change the generating capacity of the Energy Commission-approved project, the site access, or the interconnection point at Red Bluff Substation, although there will be a slight re-routing of the generation tie-line near the western end of the route and around Southern California Edison's newly constructed Red Bluff Substation. In addition to approval from the Energy Commission, the amended project will require BLM to complete an environmental review and grant a right-of-way lease.

Over the coming months, the Energy Commission will be holding a number of public workshops and hearings on the proposal to determine whether the modified project should be approved for construction and operation and under what set of conditions. These workshops and hearings will provide the public and tribes, as well as local, state and federal agencies, the opportunity to ask questions about, and provide input on, the proposed modifications. The Energy Commission will issue notices for these workshops and hearings at least 10 days prior to the meeting. If you want to be notified by e-mail whenever a public meeting is scheduled or a document is posted to the project website, you can sign up for the project list server on the web page. Public notices can also be sent to you by mail at your request. Should the Tribe request, Energy Commission staff will arrange for a separate meeting to discuss issues that the Tribe may wish to hold in confidence from the general public.

To view a copy of the Petition to Amend and supplement for this compliance proceeding (09-AFC-7C) and find more information about the project and proceedings, please visit the project website. For access to all project information, including past project certification, go to: <http://www.energy.ca.gov/sitingcases/palen>.

For access to specific project amendment and supplemental information go to: http://www.energy.ca.gov/sitingcases/palen/compliance/2012-12-18_Pettition_to_amend_TN-68910.pdf, and [http://www.energy.ca.gov/sitingcases/palen/compliance/supplement_1_pti/Supplement No 01.pdf](http://www.energy.ca.gov/sitingcases/palen/compliance/supplement_1_pti/Supplement_No_01.pdf).


Please consider reviewing the above referenced project information so that we can promptly proceed to meaningful dialogue that matches the pace of the project compliance process. Staff anticipates publishing its Preliminary Staff Assessment on the petition in May 2013. Staff will be following up this letter with phone calls to ascertain the tribe's level of interest.

The Energy Commission staff looks forward to your comments or questions. If you would like to talk with staff about concerns regarding impacts that Palen Solar Power Plant modifications could have on resources of concern to the Tribe or arrange a

Jill McCormick
February 25, 2013
Page 3

meeting, please contact Thomas Gates at (916) 654-5008; Fax: (916) 651-8868; or
thomas.gates@energy.ca.gov.

Sincerely,

A handwritten signature in black ink, appearing to read "Roger E. Johnson". The signature is fluid and cursive, with the first name "Roger" being the most prominent.

ROGER E. JOHNSON
Deputy Director
Siting, Transmission
and Environmental Protection Division

Energy Commission Tribal Liaison

Enclosures: Site Vicinity Map
PSEGS Facility Boundary Map