

Memo

DOCKET

08-AFC-7C

DATE Aug 16 2011

RECD. Aug 24 2011

To: Eric Veerkamp, Compliance Project Manager
From: Mary Castillo
CC: Mark Kehoe, Ron Sichau, Cathy Martin
Date: August 16, 2011
Re: Approval Request

- **Request for Administrative Approval – Temporary Lay Down Area**

Both electronic and hard copies of this transmittal record will be submitted.

Memo

To: Erick Veerkamp
From: Mark Kehoe
CC: Chris Marxen
Date: 8/24/2011
Re: GWF Tracy (08-AFC-07) Temporary Lay Down Area Expansion

During our last meeting at the GWF Tracy Combined Cycle project site, we discussed the additional temporary construction lay down area in the northeast portion of our property that was needed to store construction materials for the next several months. The additional acreage being added for lay down is 5.45 acres. The approved AFC identified 12.3 acres of property was to be used for construction parking and construction materials storage. **Land Use 1** required that all property used for temporary storage and construction usage be restored at the end of the project and returned to possible agricultural use. Land Use 1 also required the mitigation of Prime Farmland loss of 3.28 acres which has been completed. All land to be used during construction is owned by GWF Energy and was part of the original project Tracy Peaker Plant (01-AFC-16) that was constructed in 2002-3. Both Prime Farmland loss and multi-species habitat conservation loss (36.4 acres) were fully mitigated as part of the original project.

Figure 1 (see attached) provides a drawing that shows GWF Energy's property boundary of nominally 40 acres, the nominal 12.3 acres of original construction parking and lay down/construction area and the additional 5.45 acres of land that GWF requests be approved for construction material storage.

The justification for the request of the administrative approval for the expansion of the lay down area includes the following:

1. The original application for the Authority For Certification included a preliminary general arrangement and site usage drawing that was submitted approximately 30 months prior to the selection of the EPC contractor.
2. GWF has complied with Land Use 1 in mitigating the loss of Prime Farmland (3.28 acres) for the construction of the GWF Tracy Combined Cycle project.
3. GWF has fully mitigated the loss of 40 acres of Prime Farmland and 36.4 acres of multi-species habitat loss during the original Peaker Plant construction.
4. The proposed additional lay down area land was included and fully mitigated in the original project Tracy Peaker Plant (01-AFC-16).

5. The Drainage, Erosion and Sedimentation Control plan has been revised to include Best Management Practices (BMPs) for the additional lay down area and as such will prevent any surface water accumulation from storm events from draining onto adjacent properties.

- a. Bureau Veritas – North America the Chief Building Official for the project has reviewed and approved the site drainage drawings that reflect the changes to the lay down area.

GWF Energy LLC requests that the increase in the lay down area for temporary use of land previously mitigated be approved as an administrative change by the California Energy Commission's Compliance Project Manager.

Please feel free to contact me if you have any further questions regarding this request.



GENERAL NOTES FOR EROSION AND SEDIMENT CONTROL

- UNLESS OTHERWISE INDICATED, ALL VEGETATION AND STRUCTURAL EROSION AND SEDIMENT CONTROL PRACTICES WILL BE CONSTRUCTED AND MAINTAINED ACCORDING TO MINIMUM STANDARDS AND SPECIFICATIONS OF THE LOCAL BUILDING AUTHORITIES.
- CONTRACTOR SHALL BE RESPONSIBLE FOR COMPLIANCE WITH THE SEDIMENT CONTROL MEASURES SCHEDULED. ALL PERIMETER SEDIMENT CONTROL PRACTICES SHALL BE INSTALLED PRIOR TO ANY MAJOR SOIL DISTURBANCES AND MAINTAINED UNTIL PERMANENT PROTECTION IS ESTABLISHED.
- MAINTENANCE OF ALL SEDIMENT CONTROL MEASURES ON THE PROJECT SITE SHALL BE THE RESPONSIBILITY OF THE CONTRACTOR UNTIL THE PROJECT IS 100 PERCENT COMPLETE, AT WHICH TIME ALL TEMPORARY MEASURES WILL BE REMOVED BY THE CONTRACTOR.
- SEE DRAWING C8.6 FOR TYPICAL SECTION AND DETAILS.
- SEE DRAWINGS C2.0 - C2.4 FOR STORM DRAINAGE AND CULVERT INFORMATION.
- SEE DRAWING C8.0 FOR SITE FINISHING.
- IN ORDER TO AVOID IMPACTS STEMMING FROM WIND EROSION, THE CONTRACTOR SHOULD LIMIT THE AMOUNT OF EXPOSED AREA AT A GIVEN TIME. DURING CONSTRUCTION FOR THE PROPOSED ACCESS ROAD, THE CONTRACTOR SHOULD STABILIZE A GIVEN AREA BEFORE DISTURBING ADDITIONAL ONES.
- SEE CASQA BMP DETAILS (LATEST EDITION) AND THE SWPPP FOR ONE TRACT COMBINED CYCLE POWER PLANT CONSTRUCTION ACTIVITY STORM WATER MANAGEMENT.
- CONTRACTOR TO PROVIDE TEMPORARY BY-PASS PUMPING FROM THE EXISTING STORM DRAIN SYSTEM TO THE PROPOSED RETENTION BASIN, AS NEEDED, UNTIL THE PROPOSED STORM DRAIN SYSTEM IS CONSTRUCTED.
- CONTRACTOR TO HYDROSEED ANY AREA DISTURBED DURING THE CONSTRUCTION PROCESS UNLESS RECEIVING PERMANENT STABILIZATION.

CUT/FILL CALCULATIONS

VOLUME OF CUT FOR NEW PERMANENT RETENTION BASIN	12,000± CY
VOLUME OF FILL FOR EXISTING RETENTION BASIN AND POWER PLANT (WITHOUT FOUNDATION, PAVEMENT, ETC)	13,000± CY (MUST BE CONTROLLED FILL)
VOLUME OF CUT FOR MAJOR FOUNDATIONS	2,000± CY
VOLUME OF CUT FOR TEMPORARY SEDIMENT POND (NOTE THAT THIS WILL HAVE TO BE FILLED AT THE END OF THE PROJECT)	1,700± CY

BEST MANAGEMENT PRACTICES PER CASQA CONSTRUCTION BMP MANUAL- NON STRUCTURAL

- EC-1. SCHEDULING
EC-9. TEMPORARY DIVERSION DIKE
SE-7. STREET SLEEPING AND VACUUMING
NS-1. WATER CONSERVATION PRACTICES
NS-3. PAVING AND GRINDING OPERATIONS
NS-6. ILLEGAL CONNECTION/DISCHARGE
NS-7. POTABLE WATER/IRRIGATION
NS-12. CONCRETE CURING
NS-13. CONCRETE FINISHING
WE-1. WIND EROSION CONTROL
WM-2. MATERIAL USE
WM-4. SPILL PREVENTION AND CONTROL
WM-7. CONTAMINATED SOIL MANAGEMENT
WM-9. SANITARY/SEPTIC WASTE MANAGEMENT
WM-10. LIQUID WASTE MANAGEMENT

ABBREVIATIONS

APPROX	- APPROXIMATE	INV	- INVERT
ASPH	- ASPHALT	MAX	- MAXIMUM
BM	- BENCH MARK	MH	- MANHOLE
CB	- CATCH BASIN	MIR	- MINIMUM
CDPE	- CORRUGATED HIGH DENSITY POLYETHYLENE	MSL	- MEAN SEA LEVEL
CCW	- COURTCOURTWORK	NO	- NUMBER
CJ	- CONSTRUCTION JOINT	NTS	- NOT TO SCALE
CL	- CENTER LINE	PC	- POINT OF CURVATURE
CONC	- CONCRETE	PI	- POINT OF INTERSECTION
CR	- CULVERT	PL	- PROPERTY LINE
DI	- DIAMETER	PT	- POINT OF TANGENCY
DIP	- DUCTILE IRON PIPE	PM	- POINT OF VERTICAL INTERSECTION
DWG	- DRAWING	R	- RADIUS
EL	- ELEVATION	RCPP	- REINFORCED CONCRETE PIPE
EJ	- EXPANSION JOINT	REV	- REVISION
EX	- EXISTING	R/W	- RIGHT OF WAY
FES	- FLARED END SECTION	TC	- TOP OF CURB
FF	- FINISHED FLOOR	TP	- TOP OF PAVEMENT
HDPE	- HIGH DENSITY POLYETHYLENE	TOC	- TOP OF CONCRETE
HP	- HIGH POINT	TG	- TOP OF GATE
ID	- INSIDE DIAMETER	TYP	- TYPICAL

LEGEND:

- EXISTING CONTOUR
- NEW CONTOUR
- EXISTING SPOT ELEVATION
- NEW SPOT ELEVATION
- PROPERTY LINE
- LIMITS OF DISTURBANCE
- MATCH LINE
- NEW FENCE
- TEMPORARY CONSTRUCTION FENCE
- SURFACE DRAINAGE FLOW INDICATOR
- PERSONNEL GATE
- SLING GATE
- MOTOR OPERATED GATE
- CATCH BASIN
- MANHOLE
- CULVERT
- NORTHING COORDINATE
- EASTING COORDINATE
- EXISTING OVERHEAD POWER LINES
- EXISTING UNDERGROUND GAS LINES
- EXISTING POWER LINE TRANSMISSION TOWER
- TEMPORARY DIVERSION SHALE (PT)
- TEMPORARY SILT FENCE
- TEMPORARY INLET PROTECTION
- CONSTRUCTION ENTRANCE
- STABILIZED CONSTRUCTION ROADWAY
- EXISTING TREES, PROTECT IN PLACE
- SILT FENCE
- SEDIMENT/RETENTION BASIN
- STORM DRAIN INLET PROTECTION
- CONSTRUCTION ENTRANCE
- STABILIZED CONSTRUCTION ROADWAY
- ENTRANCE/OUTLET FIRE MASH
- HYDROSEEDING
- STRAW MULCH
- TEMPORARY DIVERSION DIKE
- VEHICLE AND EQUIPMENT CLEANING
- VEHICLE AND EQUIPMENT FUELING
- VEHICLE AND EQUIPMENT MAINTENANCE
- MATERIAL DELIVERY AND STORAGE
- STOCKPILE MANAGEMENT
- SOLID WASTE MANAGEMENT
- HAZARDOUS WASTE MANAGEMENT
- FORECAST WASTE MANAGEMENT
- WIND EROSION CONTROL
- NOTE: INCLUDES MANGANESE CHLORIDE APPLICATION FOR SOIL STABILIZATION

NO.	DATE	REVISION DESCRIPTION	DESIGNED	APPROVED
7	01/25/2011	ADDITIONAL LAYDOWN AREAS	AKA	
6	01/21/2011	WEST PLANT ROAD REVISIONS	AKA	
5	01/25/2011	ISSUED FOR CONSTRUCTION	AKA	

Kimley-Horn and Associates, Inc.
 Engineers, Planners, and Environmental Scientists
 760 1st City Square, Suite 400, Orange, California 92668 (714) 952-3000

Shimadzu
 Shimadzu Consulting Services Inc.
 482 Popper Road
 Scarborough, ME U.S.A.
 04074
 Tel: 207.883.1578
 Fax: 207.883.1578
 www.shimadzu.com

PB Power
 A Parsons Brinckerhoff Company
 303 SECOND STREET, SUITE 700 NORTH, SAN FRANCISCO, CALIFORNIA 94107

WOOD GROUP POWER SOLUTIONS, INC.

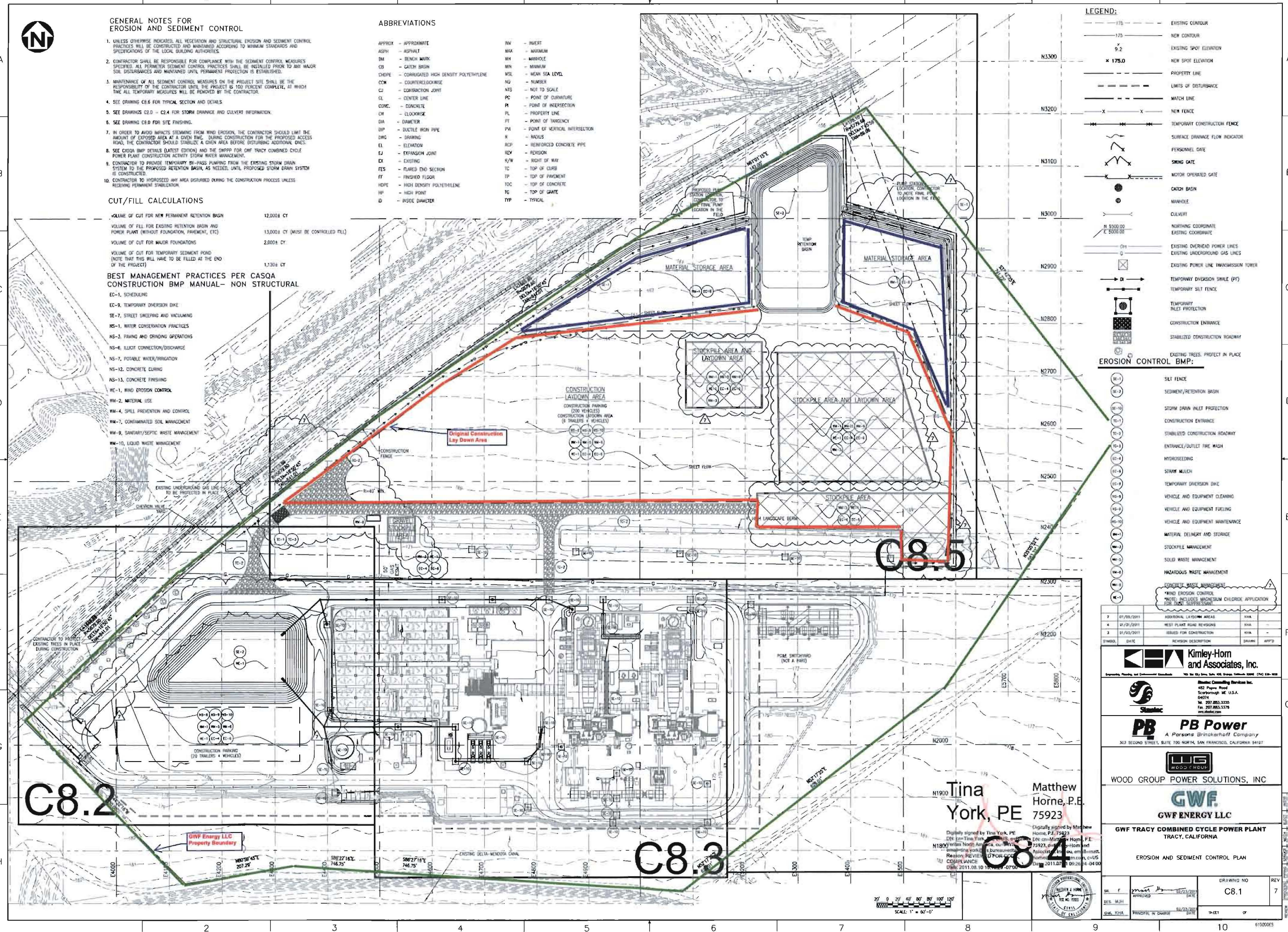
GWF ENERGY LLC

GWF TRACY COMBINED CYCLE POWER PLANT TRACY, CALIFORNIA

EROSION AND SEDIMENT CONTROL PLAN

DESIGNED	APPROVED	DRAWING NO	REV
CHK. P.H.A.	PRINCIPAL IN CHARGE	C8.1	7

K:\NVA_DLV\CA Projects\084613000 - GWF Tracy\CADD\Current\084613000ES.dwg
 Date 7-11-11 08:07am Plotted by: mch.horne



Tina York, PE
 Matthew Horne, P.E.
 Digitally signed by Tina York, PE
 DN: cn=Tina York, o=Kimley-Horn and Associates, ou=PE, email=tina.york@kimley-horn.com, c=US
 Digitally signed by Matthew Horne, P.E.
 DN: cn=Matthew Horne, o=Kimley-Horn and Associates, ou=PE, email=matthew.horne@kimley-horn.com, c=US
 Reason: REVIEWED FOR CONSTRUCTION
 Date: 2011.08.10 15:44:00 -0700



DATE PLOTTED: 7/11/11 8:07 AM