



CH2MHILL

CH2M HILL
2485 Natomas Park Drive
Suite 600
Sacramento, CA 95833
Tel 916-920-0300
Fax 916-920-8463

December 23, 2008

DOCKET	
05-AFC-2C	
DATE	<u>DEC 23 2008</u>
RECD.	<u>DEC 24 2008</u>

Mr. Dale Rundquist
Compliance Project Manager
California Energy Commission
1516 9th Street
Sacramento, CA 95814

Re: Petition for Modifications No. 2, Walnut Creek Energy Park (05-AC-2C)

Dear Mr. Rundquist:

On behalf of Walnut Creek Energy, LLC, please find attached one original and 4 copies of Petition for Modifications No. 2 for the Walnut Creek Energy Park (05-AFC-2C). Also attached are 10 electronic copies of the petition on CD-ROM. This Petition for Modification proposes to change the height of the generation tie-line transmission structures from 90 feet high to 135 feet high (maximum). This change is necessary for the project's generation tie-line to span several 66 kV transmission lines that are located between the project site and the Walnut Substation.

If you have any questions about this matter, please contact me at 916-286-0278 or Victor Yamada at 949-798-7895.

Sincerely,

Douglas M. Davy, Ph.D.
Program Manager

Attachment

Faint, illegible text at the bottom of the page, likely bleed-through from the reverse side.

Petition for Modification No. 2

Transmission Structure Height Change

for the

Walnut Creek Energy Park

City of Industry, California

(05-AFC-02)

Submitted to the:

California Energy Commission

Submitted by:

Walnut Creek Energy, LLC

A wholly owned subsidiary of



With Technical Assistance by:



December 2008

Contents

Section	Page
Contents.....	iii
Acronyms and Abbreviations	v
Executive Summary.....	vii
1.0 Introduction.....	1-1
1.1 Overview of Modifications	1-1
1.2 Ownership of the Facility Property	1-2
1.3 Necessity of Proposed Changes	1-2
1.4 Consistency of Changes with Certification	1-2
1.5 Summary of Environmental Impacts	1-3
1.6 Conditions of Certification	1-3
1.7 References	1-3
2.0 Description of Project Modifications	2-1
3.0 Environmental Analysis of Proposed Project Modifications.....	3-1
3.1 Visual Resources	3-1
3.1.1 Environmental Baseline Information	3-2
3.1.2 Environmental Consequences	3-2
3.1.3 Mitigation Measures	3-2
3.1.4 Consistency with LORS.....	3-2
3.1.5 Conditions of Certification.....	3-2
3.2 LORS.....	3-3
4.0 Potential Effects on the Public	4-1
5.0 List of Property Owners	5-1
6.0 Potential Effects on Property Owners	6-1

Figures

2-1 Walnut Substation Tie-In Alternatives

Attachment A

Property Owners within 1,000 feet of the Proposed Facility

Acronyms and Abbreviations

AFC	Application for Certification
CCR	California Code of Regulations
CEC	California Energy Commission
EME	Edison Mission Energy
KOP	key observation point
kV	kilovolt (1,000 volts)
LORS	laws, ordinances, regulations, and standards
SCE	Southern California Edison
WCE	Walnut Creek Energy, LLC
WCEP	Walnut Creek Energy Park

Executive Summary

Walnut Creek Energy, LLC (WCE) (a wholly owned subsidiary of Edison Mission Energy) petitions the California Energy Commission to modify the certification for Walnut Creek Energy Park (WCEP) (05-AFC-02). This Petition for Modification proposes to change the height of the transmission line structures that are a part of the generation tie-line for the project. All proposed modifications would be within the same facility layout diagram (Figure WSQ-11) that was included in the November 13, 2006 Supplement IV in Response to Data Responses and Workshop Queries in Support of the Application for Certification for the Walnut Creek Energy Park (05-AFC-02) (Supplement IV).

As indicated in Supplement IV, Southern California Edison (SCE) has identified two generation tie-line options. These are referred to here as the Proposed Route and the Alternative Route and are shown in Figure 2-1 in Section 2.0 of this document. Both the Proposed Route and the Alternative Route would involve crossing over or under eight existing and different 66-kV transmission line alignments.

Recently, and subsequent to the WCEP's certification, SCE has indicated to WCE that crossing the eight 66-kV lines will require taller structures for spanning these lines. Therefore, WCE requests that the California Energy Commission modify the WCEP's certification to increase the height of the 5 proposed project transmission line structures from 90 feet tall to 115 to 135 feet tall. This would allow a safe distance between the existing transmission line conductors and the proposed generation tie-line conductors in the event that SCE selects an overhead configuration as its preferred WCEP alignment.

WCE does not suggest any revisions to the Conditions of Certification set forth in the February 2008 certification for WCEP. With adherence to the Conditions of Certification, the WCEP, as modified, will not cause significant adverse impacts to the environment and will not cause environmental impacts substantially different than those addressed in the Commission Decision.

Introduction

1.1 Overview of Modifications

Walnut Creek Energy, LLC (WCE) petitions the California Energy Commission (CEC) to modify the certification for Walnut Creek Energy Park (WCEP) (05-AFC-02). The Application for Certification (AFC) for this project was filed in 2005 (WCE, 2005) and the facility received CEC certification on February 27, 2008 (CEC, 2008).

This Petition for Modification proposes to increase the height of the 5 proposed project generation tie-line structures from 90 feet tall to 115 to 135 feet tall. This would allow a safe distance between the conductors and towers of the existing 66-kV transmission lines and the WCEP's generation tie-line alignment in the event that SCE selects an overhead configuration as its preferred WCEP alignment.

A detailed description of the proposed modifications to the facility general arrangement is included in Section 2.0.

This Petition for Modification contains all of the information that is required pursuant to the CEC's Siting Regulations (California Code of Regulations [CCR] Title 20, Section 1769, Post Certification Amendments and Changes). The information necessary to fulfill the requirements of Section 1769 is contained in Sections 1.0 through 6.0, as summarized in Table 1.1-1.

TABLE 1.1-1
Informational Requirements for Post-Certification Modifications

Section 1769 Requirement	Section of Petition Fulfilling Requirement
(A) A complete description of the proposed modifications, including new language for any conditions that will be affected	Section 2.0—Proposed modifications Sections 3.1 to 3.15—Proposed changes to Conditions of Certification, if necessary, are located at the end of the technical section
(B) A discussion of the necessity for the proposed modifications	Section 1.3
(C) If the modification is based on information that was known by the petitioner during the certification proceeding, an explanation why the issue was not raised at that time	Section 1.3
(D) If the modification is based on new information that changes or undermines the assumptions, rationale, findings, or other bases of the final decision, an explanation of why the change should be permitted	Sections 1.4, 3.1
(E) An analysis of the impacts the modification may have on the environment and proposed measures to mitigate any significant adverse impacts	Section 3.1
(F) A discussion of the impact of the modification on the facility's ability to comply with applicable laws, ordinances, regulations, and standards;	Section 3.1

TABLE 1.1-1
Informational Requirements for Post-Certification Modifications

Section 1769 Requirement	Section of Petition Fulfilling Requirement
(G) A discussion of how the modification affects the public	Section 4.0
(H) A list of property owners potentially affected by the modification	Section 5.0
(I) A discussion of the potential effect on nearby property owners, the public and the parties in the application proceedings.	Section 6.0

1.2 Ownership of the Facility Property

WCE will own the WCEP, and is a wholly-owned subsidiary of Edison Mission Energy (EME). EME is an independent power developer, owner, and operator engaged in the business of owning or leasing, operating, and selling energy and capacity from electric power generation facilities.

1.3 Necessity of Proposed Changes

The Siting Regulations require a discussion of the necessity for the proposed revision to WCEP certification and whether the modification is based on information known by the petitioner during the certification proceeding (Title 20, CCR, Sections 1769 [a][1][B] and [C]). This Petition for Modification requests approval to increase the height of the proposed 5 generation tie-line structures from that described in the Commission Decision. The purpose of the modification is to allow a safe vertical distance between the WCEP generation tie-line's conductors and those of the eight 66-kV transmission lines that WCEP's generation tie-line must cross to reach the Walnut Substation. To span these lines, the structures must be between 115 to 135 feet high instead of 90 feet high to satisfy CPUC General Order 95 criteria for line clearances. SCE recently (and after WCEP's certification) indicated that it is necessary to increase the proposed height of the proposed project generation tie-line structures from 90 feet tall to 115 to 135 feet tall.

The existing generation tie-line routing options (the Proposed Route and the Alternative Route) are described in WCE's November 13, 2006 Supplement IV in Response to Data Responses and Workshop Queries in Support of the Application for Certification for the Walnut Creek Energy Park (WCE, 2006). Both of the alternatives described in this document would involve a connection to the northwest corner of the Walnut Substation, and both would involve crossing over or under 8 existing and different 66-kV transmission line alignments.

1.4 Consistency of Changes with Certification

The Siting Regulations also require a discussion of the consistency of the proposed project revision with the applicable laws, ordinances, regulations, and standards (LORS) and

whether the modifications are based on new information that changes or undermines the assumptions, rationale, findings, or other basis of the final decision (Title 20, CCR Section 1769 [a][1][D]). If the project is no longer consistent with the certification, the Petition for Modification must provide an explanation why the modification should be permitted.

The proposed project revisions are consistent with all applicable LORS. This Petition for Modification is not based on new information that changes or undermines any basis for the final Decision. The findings and conclusions contained in the Commission Decision for WCEP (CEC, 2008) are still applicable to the project, as modified.

1.5 Summary of Environmental Impacts

The CEC Siting Regulations require that an analysis be conducted to address the potential impacts the proposed modifications may have on the environment, and proposed measures to mitigate any potentially significant adverse impacts (Title 20, CCR, Section 1769 [a][1][E]). The regulations also require a discussion of the impact of the modification on the facility's ability to comply with applicable LORS (Section 1769 [1][a][F]). Section 3.0 of this Petition for Modification includes a discussion of the potential environmental impacts associated with the modifications, as well as a discussion of the consistency of the modification with LORS. Section 3.0 also includes updated environmental baseline information if changes have occurred since the AFC that would have a bearing on the environmental analysis of the Petition for Modification. Section 3.0 concludes that there will be no significant environmental impacts associated with implementing the actions specified in the Petition for Modification and that the project as modified will comply with all applicable LORS.

1.6 Conditions of Certification

The construction of the WCEP modifications identified in this petition would require no changes to the CEC Conditions of Certification, as described in the Commission Decision for the WCEP.

1.7 References

California Energy Commission (CEC). 2008. Final Commission Decision on Walnut Creek Energy Park. California Energy Commission, Sacramento, California. February.

Walnut Creek Energy, LLC (WCE). 2005. Application for Certification for the Walnut Creek Energy Park. Submitted to the California Energy Commission. Submitted by Walnut Creek Energy, LLC, a wholly owned subsidiary of Edison Mission Energy.

Walnut Creek Energy, LLC (WCE). 2006. Supplement IV in Response to Data Responses and Workshop Queries in Support of the Application for Certification for the Walnut Creek Energy Park (05-AFC-2). Submitted by Walnut Creek Energy, LLC, a wholly owned subsidiary of Edison Mission Energy.

SECTION 2.0

Description of Project Modifications

This section includes a description of the proposed project modifications, consistent with CEC Siting Regulations (Title 20, CCR, Section 1769 [a][1][A]). WCE proposes to increase the height of the proposed transmission line structures that were described in the AFC and AFC Supplement IV to allow a safe distance between the existing 66-kV transmission lines' conductors and the proposed generation tie-line's conductors. The proposed structures would be a monopole design, as was described in the AFC, Section 5.0 Electric Transmission. Instead of being 90 feet tall, as described in that section and shown in AFC Figure 5.1-3, the proposed structures would be between 115 and 135 feet tall.

SCE will construct and own the generation tie-line from the WCEP site through the SCE ROW and Walnut Substation. Figure 2-1 shows the generation tie-line interface at the take-off structure on WCE property with 2 generation tie-line structures located in the SCE ROW and 3 structures located inside the Walnut Substation boundary. The green lines shown on Figure 2-1 are the 66-kV transmission lines with structures that would be shorter than the proposed transmission line structures. The yellow lines shown on Figure 2-1 are the 230-kV transmission lines with 150- to 170-foot-tall structures.

Although not a modification, the following provides clarification regarding the length of the transmission line for the Proposed Route. The total length of the transmission line from the WCE property line to the SCE Walnut Substation is approximately 1,200 feet as previously described. The total length of the transmission line is approximately 2,200 feet including 1,000 feet within the Walnut Substation.

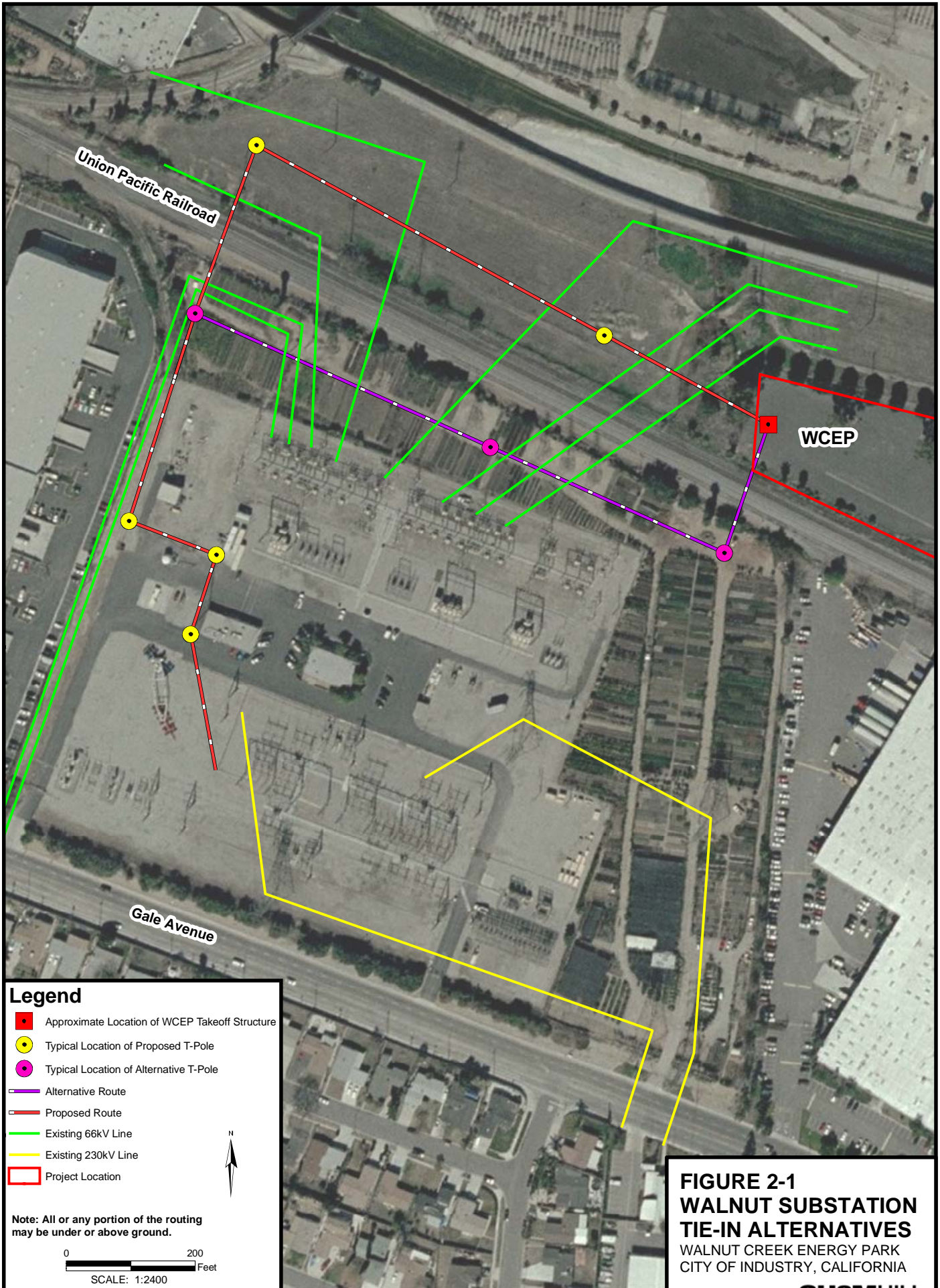


FIGURE 2-1
WALNUT SUBSTATION
TIE-IN ALTERNATIVES
 WALNUT CREEK ENERGY PARK
 CITY OF INDUSTRY, CALIFORNIA

SECTION 3.0

Environmental Analysis of Proposed Project Modifications

The proposed modifications to the WCEP would be limited to the minor height changes of the proposed generation tie-line structures. As a result, the environmental analysis for all but one of the environmental disciplines does not differ significantly from that described in the AFC and Supplement IV, and the impacts associated with this Petition for Modification would be less than significant. The environmental analysis for the following environmental disciplines would not differ significantly from the AFC and Supplement IV:

- Air Quality
- Biological Resources
- Cultural Resources
- Geology and Paleontology
- Hazardous Materials Management
- Land Use
- Noise
- Public Health
- Socioeconomics
- Soil and Water Resources
- Traffic and Transportation
- Waste Management
- Worker Safety and Fire Protection

For the remaining environmental discipline, Visual Resources, the proposed changes pose the possibility of a change to the environmental analysis presented in the AFC and Supplement IV. Section 3.1 addresses the potential significance of changes that could result from the proposed transmission line structure height increase. The section includes a brief discussion of the environmental baseline, followed by a discussion of the environmental consequences of the modified project design, compared with those of the original design. The modifications do not require changes to the Conditions of Certification.

3.1 Visual Resources

The Commission Decision determined that the WCEP project would not have significant impacts on visual resources. Pursuant to this proposed Petition for Modification, the project would increase the height of the proposed project generation tie-line structures. However, the proposed modifications are not expected to have a significant impact on visual resources.

3.1.1 Environmental Baseline Information

This Petition for Modification does not require changes to the Environmental Baseline Information as described in the AFC. There have been no significant changes in terms of local development that would change the existing views.

3.1.2 Environmental Consequences

The proposed increase in height of the generation tie-line structures is expected to cause no significant change in impact on the overall visual character and quality at the Key Observation Points (KOPs) described and discussed in the AFC and Supplement IV. Supplement IV indicated that the additional structures would have a negligible effect, from a visual resources point of view, because the substation area is already congested with towers and transmission lines, and the new structures would not block any scenic or protected viewsheds.

Increasing the height of the proposed generation tie-line structures by 25 to 45 feet would have a negligible effect on visual resources for the same reason as described above, i.e., the area is already congested with towers and transmission lines, and no scenic or protected viewsheds would be blocked by the structures' presence. In addition, the proposed structures would be shorter than the existing 150- to 170-foot-tall 230-kV structures whose lines also connect into the substation (see Figure 2-1 for locations of the existing and proposed transmission lines).

3.1.3 Mitigation Measures

The impacts on visual resources as a result of the proposed height increase to the new generation tie-line structures are less than significant, and will, therefore, not require additional mitigation measures.

3.1.4 Consistency with LORS

The proposed modification to the WCEP's transmission line structure height will remain consistent with all applicable LORS related to Visual Resources. The City of Industry's letter to the CEC dated April 18, 2006 included an evaluation of the project relative to the City's applicable local land use LORS. Item T of the City's Development Plan Standards prescribes that the maximum height of buildings or structures in an industrial zone is 150 feet. Excepted from that height requirement were radio towers, oil derricks, utility substations, and electricity generating facilities. That 2006 City LORS evaluation indicated that the project would conform to the standard because the project's tallest features (the turbine exhaust stacks) would be 90 feet tall.

The proposed modification to the WCEP's transmission line structure height (i.e., an increase in height to 115 to 135 feet tall) will also conform to Item T of the City's Development Plan Standard.

3.1.5 Conditions of Certification

The proposed modifications to the WCEP general arrangement do not require changes to the Conditions of Certification for Visual Resources.

3.2 LORS

The Commission Decision certifying the WCEP project concluded that the project is in compliance with all applicable LORS. The project, as modified, will continue to comply with all applicable LORS, as indicated in Section 3.1.4 of this document.

SECTION 4.0

Potential Effects on the Public

This section discusses the potential effects on the public that may result from the modifications proposed in this Petition for Modification application, pursuant to CEC Siting Regulations (Title 20, CCR, Section 1769[a][1][G]).

No adverse effects on the public will occur because of the changes to the project, as proposed in this Petition for Modification.

SECTION 5.0

List of Property Owners

This section lists the property owners in accordance with the CEC Siting Regulations (Title 20, CCR, Section 1769[a][1][H]). A list of property owners whose property is located within 1,000 feet of the proposed facility is included as an attachment. The list is provided in a format suitable for copying to mailing labels in Attachment A.

SECTION 6.0

Potential Effects on Property Owners

This section addresses potential effects of the project changes proposed in this Petition for Modification on nearby property owners, the public, and parties in the application proceeding, pursuant to CEC Siting Regulations (Title 20, CCR, Section 1769 [a][1][I]).

The project, as modified, will not differ significantly in potential effects on adjacent land owners, compared with the project as previously proposed. The project, therefore, would have no adverse effects on nearby property owners, the public, or other parties in the application proceeding.

Attachment A
Owners of Property within 1,000 Feet

8242 001 001
THERESA M ZALUSKE
700 STURBRIDGE DR
LA HABRA CA 90631

8242 001 002
SOLEDAD ARANDA
16209 FOLGER ST
HACIENDA HEIGHTS CA 91745

8242 001 003
FLORA LUCERO
16215 FOLGER ST
HACIENDA HEIGHTS CA 91745

8242 001 006
JESSICA CERVANTES
16227 FOLGER ST
HACIENDA HEIGHTS CA 91745

8242 001 007
CYNTHIA GUTIERREZ
16233 FOLGER ST
HACIENDA HEIGHTS CA 91745

8242 001 008
ISAURO & JULIA GARRIDO
16239 FOLGER ST
HACIENDA HEIGHTS CA 91745

8242 001 009
EARNEST & GLORIA CHAVIRA
PO BOX 5753
HACIENDA HEIGHTS CA 91745

8242 001 010
ROBERT V & DEANNA J SPINKS
JR.
16251 FOLGER ST
HACIENDA HEIGHTS CA 91745

8242 001 011
PETER G VALLEJO
16257 FOLGER ST
HACIENDA HEIGHTS CA 91745

8242 001 012
RAMON & BLANCA PERLA
16263 FOLGER ST
HACIENDA HEIGHTS CA 91745

8242 001 014
JOHN K & CATHY D MAYFIELD
7644 PISMO AVE
HESPERIA CA 92345

8242 001 015
JUAN M & MARIA C MENA
16281 FOLGER ST
HACIENDA HEIGHTS CA 91745

8242 001 016
BRUCE A & JUDITH L HENSON
16303 FOLGER ST
HACIENDA HEIGHTS CA 91745

8242 001 017
TERRY MCKENDRY
16309 FOLGER ST
HACIENDA HEIGHTS CA 91745

8242 001 018
ANTONIA GONZALEZ
16315 FOLGER ST
HACIENDA HEIGHTS CA 91745

8242 001 019
MAUNG G WIN
16321 FOLGER ST
HACIENDA HEIGHTS CA 91745

8242 001 020
DONALD V SHORKEY
16327 FOLGER ST
HACIENDA HEIGHTS CA 91745

8242 001 021
SHOU YING TSAI
16333 FOLGER ST
HACIENDA HEIGHTS CA 91745

8242 001 022
DALE D CUMMINGS
16339 FOLGER ST
LA PUENTE CA 91745

8242 001 023
CARLOS J & LUZ M MOSQUEDA
16345 FOLGER ST
HACIENDA HEIGHTS CA 91745

8242 001 024
JUAN & MARGARITA FIERRO
16351 FOLGER ST
HACIENDA HEIGHTS CA 91745

8242 002 015
ANTHONY H WEST
PO BOX 5402
HACIENDA HEIGHTS CA 91745

8242 002 017
UNITED CHRISTIAN CHURCH
1115 HINNEN AVE
HACIENDA HEIGHTS CA 91745

8242 002 025
PETRA SENTENO
1121 HINNEN AVE
HACIENDA HEIGHTS CA 91745

8242 002 033
RAYMUNDO & JOSEFINA GARCIA
1103 HINNEN AVE
HACIENDA HEIGHTS CA 91745

8242 002 038
EULOGIO & ESTRELLA PAT
1133 HINNEN AVE
HACIENDA HEIGHTS CA 91745

8242 002 040
ORVILLE & KATHLEEN V
SEIEROE II
1109 HINNEN AVE
LA PUENTE CA 91745

8242 004 900
 HACIENDA LA PUENTE UNIFIED
 SCHOOL DIST
 15959 E GALE AVE
 CITY OF INDUSTRY CA 91716

8242 005 001
 TROY H & MARIA A HAYS
 1112 GLENELDER AVE
 HACIENDA HEIGHTS CA 91745

8242 005 002
 MARIO F & MARTHA FUENTES
 16309 ROCHLEN ST
 HACIENDA HEIGHTS CA 91745

8242 005 003
 MARIO C & GRICELDA M
 FUENTES JR.
 16315 ROCHLEN ST
 LA PUENTE CA 91745

8242 005 004
 ROBERT & VIRGINIA A ODGERS
 16321 ROCHLEN ST
 LA PUENTE CA 91745

8242 005 005
 JOE & ADRIANNA FIGUEROA
 16327 ROCHLEN ST
 HACIENDA HEIGHTS CA 91745

8242 005 006
 JUAN L & MARIA G DURAN
 16333 ROCHLEN ST
 HACIENDA HEIGHTS CA 91745

8242 005 007
 JOSEFINA A GONZALEZ
 16341 ROCHLEN ST
 LA PUENTE CA 91745

8242 005 008
 FELIX J & JULIE GARCIA
 16351 ROCHLEN ST
 HACIENDA HEIGHTS CA 91745

8242 005 010
 IMPAC SECURED SERIES
 16352 FOLGER ST
 HACIENDA HEIGHTS CA 91745

8242 005 011
 ISMAEL & LUCIA ZAMARRIPA
 16346 FOLGER ST
 HACIENDA HEIGHTS CA 91745

8242 005 012
 ANTONIO & LIBRADA ARANDA
 16340 FOLGER ST
 HACIENDA HEIGHTS CA 91745

8242 005 013
 Y & TRAVIS S LOMALY
 16334 FOLGER ST
 HACIENDA HEIGHTS CA 91745

8242 005 014
 HSANGHOU WANG
 16328 FOLGER ST
 HACIENDA HEIGHTS CA 91745

8242 005 016
 SONIA S LAUREANO
 205 E RIGGIN ST
 MONTEREY PARK CA 91755

8242 005 017
 CARLOS H SOLOMAN JR.
 16308 FOLGER ST
 HACIENDA HEIGHTS CA 91745

8242 005 018
 CHRISTIE VALADEZ
 16302 FOLGER ST
 HACIENDA HEIGHTS CA 91745

8242 006 018
 AMALIA RAMIREZ
 16320 ROCHLEN ST
 HACIENDA HEIGHTS CA 91745

8242 006 019
 MANUEL M & LUZ A ESTRADA
 16314 ROCHLEN ST
 HACIENDA HEIGHTS CA 91745

8242 006 020
 ROMO RAYMOND S CO ROMO
 16308 ROCHLEN ST
 HACIENDA HEIGHTS CA 91745

8242 006 021
 NIAN SU XIONG
 16302 ROCHLEN ST
 HACIENDA HEIGHTS CA 91745

8242 009 001
 HELEN HERNANDEZ
 1104 FIELDGATE AVE
 HACIENDA HEIGHTS CA 91745

8242 009 002
 JORGE & ADRIANA ORTIZ
 1114 FIELDGATE AVE
 HACIENDA HEIGHTS CA 91745

8242 009 800,803,804,8242 013
 822,823,842,8242 016
 802,806,807,810,814,8242 028 800,801
 SO CALIF EDISON CO
 16408 GALE AVE
 CITY OF INDUSTRY CA 91745

8242 013 002,003
 CITY OF INDUSTRY
 15625 STAFFORD ST #100
 CITY OF INDUSTRY CA 91744

8242 013
 10,828,833,834,835,836,837,840,82
 42 015 812,813,8242 016 803,808
 SOUTH PAC CO
 16314 VALLEY BLVD
 LA PUENTE CA 91744

8242 013 901
 URBAN DEVELOPMENT AGENCY
 15660 STAFFORD ST
 CITY OF INDUSTRY CA 91744

8242 015 039,049,056,059,060
BEAR INVESTMENTS LLC
16150 STEPHENS ST
CITY OF INDUSTRY CA 91745

8242 015 052,053
L & A JUICE CO INC
16195 STEPHENS ST
CITY OF INDUSTRY CA 91745

8242 015 058
CO MABEK
4445 DEERHAVEN CT
WESTLAKE VILLAGE CA 91362

8242 016 023
SUBURBAN WATER SYSTEMS
1211 CENTER COURT DR
COVINA CA 91724

8242 016 029,043
GERALDINE B KEARNS
6370 E ROCHELLE LN
LONG BEACH CA 90815

8242 016 030
VETERANS OF FOREIGN WARS
OF U S
16157 GALE AVE
CITY OF INDUSTRY CA 91745

8242 016 033,034,036
MILON F & EARLA D VIEL
16233 GALE AVE
CITY OF INDUSTRY CA 91745

8242 016 044
RIGER HAL CO RIGER
4126 PINDAR WAY
OCEANSIDE CA 92056

8242 016 046
BUCCOLA SAVIOUR
6370 E ROCHELLE LN
LONG BEACH CA 90815

8242 016 048
TIG ENTERPRISES LLC
12165 E GALE AVE
CITY INDUSTRY CA 91745

8242 016 054
KABBALAH CENTRES OF THE
UNITED
1062 S ROBERTSON BLVD
LOS ANGELES CA 90035

8242 016 055
QING JIA GUO
18614 DEL BONITA ST
ROWLAND HEIGHTS CA 91748

8242 016 056
FENG HUNG YUNG
405 SCOTT PL
ARCADIA CA 91006

8242 016 057
CHING C & CHAO Y CHANG
22305 STEEPLECHASE LN
DIAMOND BAR CA 91765

8242 016 058
VENUS FOODS INC
770 S STIMSON AVE
CITY OF INDUSTRY CA 91745

8242 016 059
UNITED STATIONERS SUPPLY
CO
1 PARKWAY NORTH BLVD #100
DEERFIELD IL 60015

8242 016 061
ABI PROPERTIES LLC
935 LAWSON ST
CITY OF INDUSTRY CA 91748

8242 016 805,809
UNION PACIFIC R R CO
1400 DOUGLAS ST STOP1640
OMAHA NE 68179

8242 016 809
SO CALIF GAS CO
920 S STIMSON AVE
CITY OF INDUSTRY CA 91745

8242 016 901
L A CO FLOOD CONTROL DIST
500 W TEMPLE ST #754
LOS ANGELES CA 90012

8242 022 028,029
UNITED CHRISTIAN CHURCH OF
16152 GALE AVE
HACIENDA HEIGHTS CA 91745

8242 026 001
B & K ELECTRIC WHOLESale
1225 S JOHNSON DR
CITY OF INDUSTRY CA 91745

8242 028 004
CORPORATE PROPERTY
ASSOCIATES 6
50 ROCKEFELLER PLZ #2FLR
NEW YORK NY 10020