



BEFORE THE ENERGY RESOURCES CONSERVATION AND DEVELOPMENT
COMMISSION OF THE STATE OF CALIFORNIA
1516 NINTH STREET, SACRAMENTO, CA 95814
1-800-822-6228 – WWW.ENERGY.CA.GOV

DOCKET
09-AFC-2

DATE	DEC 10 2010
RECD.	DEC 10 2010

APPLICATION FOR CERTIFICATION FOR THE
TID ALMOND 2 POWER PLANT PROJECT

DOCKET No. 09-AFC-2

ERRATA TO THE PRESIDING MEMBER'S PROPOSED DECISION

After reviewing the comments submitted by the parties on or before December 6, 2010, we incorporate the following changes to the November 5, 2010 Presiding Member's Proposed Decision (PMPD):

INTRODUCTION

1. ***Page 1, paragraph 3 through Page 2, paragraph 1, change to read as follows:***

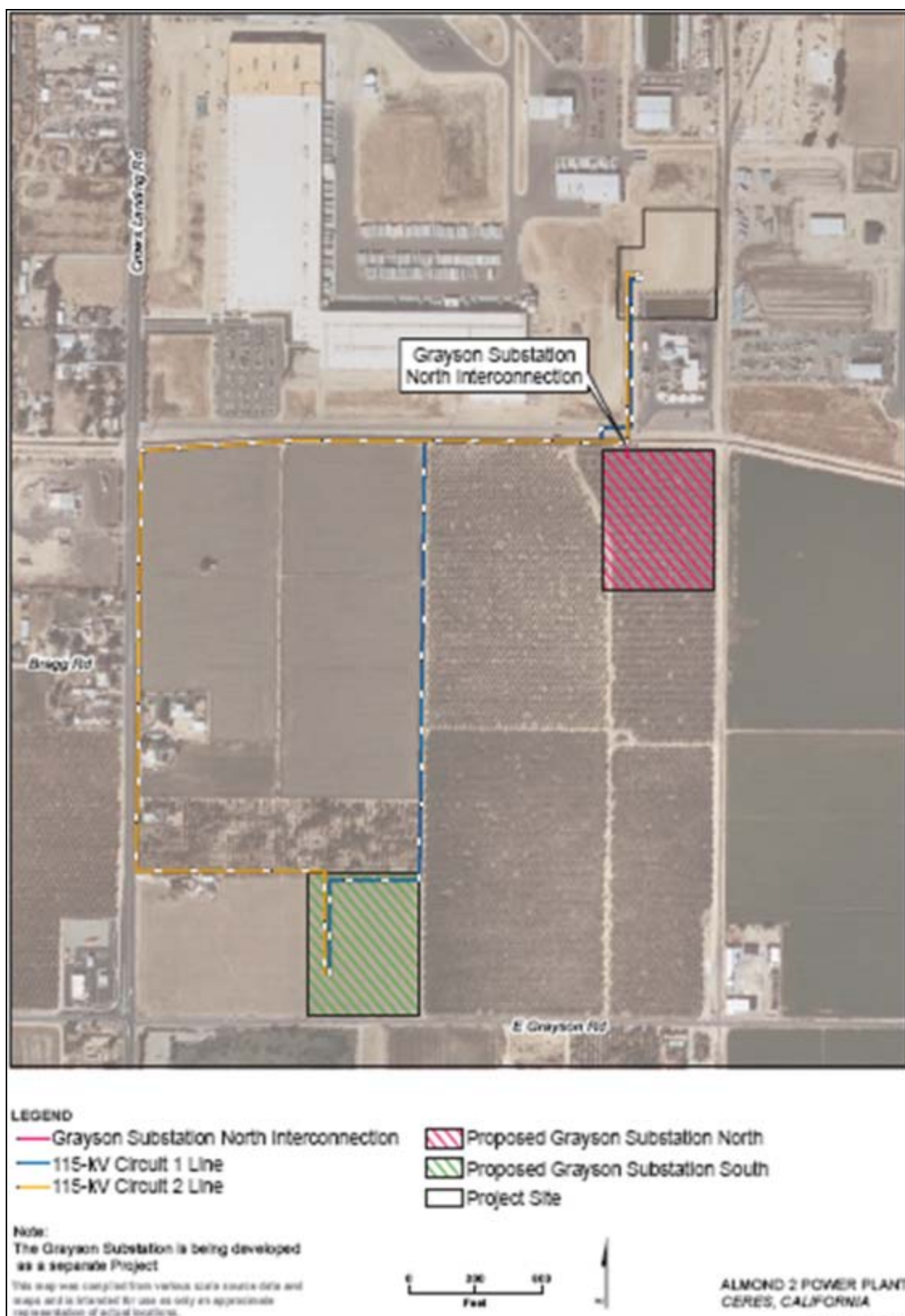
The project will be a natural-gas-fired, simple-cycle peaking facility rated at a gross generating capacity of 174 megawatts (MW) and designed to provide TID with operating reserves. Primary equipment for the generating facility would include three 58-MW General Electric Energy LM6000PG turbines equipped with a water injection system to the turbine in order to reduce nitrogen oxide (NOx) formation, and a selective catalytic reduction system (SCR) to further control NOx emissions. As proposed by the Applicant, evaluated by the Applicant and Staff, and discussed in this Decision, the A2PP proposed to transmit power to the grid at 115 kilovolts (kV) through one or two proposed new transmission lines which would connect to the proposed TID Grayson Substation, to be located approximately 3,300 feet from in close proximity to the A2PP. The substation and its linears connecting to the rest of the grid are not part of the A2PP project. The Grayson Substation is expected to be complete before the A2PP project is operational and is not part of the A2PP project. (Exs. 42, 43, 46.)

Two alternative locations were proposed for the Grayson Substation: Grayson Substation South and Grayson Substation North. (See **Introduction Figure 1** below, Exs. 42, p. 1-3 [Figure 1.1-1], 46.) Grayson Substation South would require the two 115-kV lines identified in the Application for Certification and revised Staff Assessment as Corridor 1 and Corridor 2. Under the Grayson Substation North alternative, Corridor 1 would be eliminated and instead, only a single 115-kV line in modified Corridor 2 would be required. (Exs. 42, 46.) The modified Corridor 2 would be significantly shorter than Corridor 2 as initially proposed, would extend 30 feet beyond TID's Lateral No 2 (a canal), and would require transmission poles up to a height of 130 feet (the poles as initially

proposed would reach an approximate height of up to 80 feet). (Exs. 1, § 3.0, 42, 43, 46.)

Implementation of both Corridor 1 and Corridor 2 as initially proposed, represents a worst-case scenario. The evidence submitted respectively by the Applicant and Staff and the PMPD evaluate the potential impacts of initially proposed Corridor 1 and Corridor 2 under all applicable technical areas. Moreover, the evaluation of potential Corridor 2 impacts includes surveys and analyses of a study corridor that encompasses Corridor 2 as it was modified by the Grayson Substation North alternative. (See, e.g., Exs. 1, §2.0, 3.0, 5.2, 5.13, 42, 43, 46, 300, §§ 4.2, 4.5, 4.11, 4.12, 5.5.) As more fully discussed herein, we found that with implementation of the Conditions of Certification neither construction of the corridors nor project operation with two lines would result in significant impacts.

During the 30-day PMPD comment period, the Applicant informed the Committee that the TID Board of Directors, as part of its approval of the TID's Hughson-Grayson Substation Project on November 2, 2002, selected the Grayson Substation North alternative for the connection of the A2PP to the grid. That alternative eliminates Corridor 1 and requires a modified Corridor 2 as described above. (See Introduction Figure 1). While we recognize the the transmission line modifications required for implementation of the Grayson Substation North alternative, we find that the PMPD does not require modification as it and the underlying evidence assess the transmission line-related impacts that might arise from implementation of the the Grayson Substation North alternative.



Many existing facilities at the adjacent TID Almond Power Plant (APP) will be shared with the A2PP facility without modification. A2PP will receive process water from the Ceres Wastewater Treatment Plant (CWTP) through an existing pipeline at APP, as well as service water for domestic use provided by an existing onsite water well.

Expansion of the existing natural gas service would be required for the proposed project. PG&E will construct an approximately 11.6-mile long natural gas pipeline to their supply line from the A2PP site. The project also requires reinforcement of a 1.8 mile long segment of existing natural gas pipeline.

2. *Page 3, first paragraph, change last sentence to read as follows:*

A license issued by the Commission is in lieu of other state and local permits, as well as federal permits to the extent allowed by law.

COMPLIANCE AND CLOSURE

3. *Page 6, Conditions, Compliance-3:*

Change to reflect that Dale Rundquist is now the Compliance Project Manager for the A2PP, not Chris Davis.

TRANSMISSION SYSTEM ENGINEERING

4. *Page 8, second paragraph, sentence 8, change to read as follows:*

Even so, the evidence establishes that no mitigation is required for these marginal line overloads because the overloads occur only during summer off-peak conditions and with the Almond Combustion Turbine (Almond CT) turned on.

5. *Page 11, Sentence after bullets:*

The citation missing at the end of the sentence should be made to Exhibit 46.

6. *Page 18, last sentence, change to read as follows:*

4. refer to requirements of Fulfill verification requirements of GEN-8, as follows:

Within 15 days of the completion of any work, the project owner shall submit to the CBO (a) a written notice that the completed work is ready for final inspection, and (b) a signed statement that the work conforms to the final approved plans.

After storing the final approved engineering plans, specifications, and calculations described above, the project owner shall submit to the CPM a letter stating both that the above documents have been stored and the storage location of those documents.

Within 90 days of the completion of construction, the project owner shall provide to the CBO three sets of electronic copies of the above documents at the project owner's expense. These are to be provided in the form of "read only" files (Adobe .pdf 6.0), with restricted (password-protected) printing privileges, on archive quality compact discs.

GREEN HOUSE GAS EMISSIONS

7. *Page 7, Table 3, last row and Notes, change to read as follows:*

Estimated Annualized GHG Performance (MTCO₂/MWh) 0.510^c

c. Value depends only on heat rate and fuel type and is independent of annual hours of operation.

8. *Pages 7 – 8, change to read as follows:*

The project's annual GHG emissions from operation equate to an emissions performance factor of 0.510 metric tons of CO₂ per megawatt hour. This is ~~significantly~~ slightly higher than the Emission Performance Standard (EPS) of 0.500 metric tons of CO₂ per megawatt-hour described above...

9. *Page 11, paragraph 2, change to read as follows:*

~~As such, the A2PP is a needed, nonrenewable generating resource. The proposed simple-cycle LM6000PG gas turbines for A2PP provide TID with quick starting and fast ramping power that would be much more likely to foster integration of renewable energy than comparable non-renewable base load or intermediate energy resources. (Ex. 300, p. 4.1-71). Almond 2 would provide flexible, dispatchable power necessary to integrate some of the growing generation from intermittent renewable sources, such as wind and solar generation. (Ex. 300, p. 4.1-76).~~

10. *Page 12, Finding #9, change to read as follows:*

9. The EPS in SB 1368 is the only LORS that limits power plant GHG emissions.

11. *Page 12, Finding #10, change the finding to read as follows:*

The A2PP project slightly exceeds the EPS of 0.500 MTCO₂/MWh with a rating of ~~0.454~~ 0.510 MTCO₂/MWh, but the project is designed and intended to provide electricity at an annualized plant capacity factor of less than 60 percent.

12. Page 13, Finding #13, change the finding to read as follows:

Even as more renewable generation is added to the California electricity system, gas-fired power plants such as the A2PP will be necessary to meet local capacity requirements and to provide intermittent generation support, grid operations support, extreme load and system emergencies support, and general energy support.

13. Page 14, Conclusions of Law, #4, change to read as follows:

The A2PP ~~project's GHG emissions will comply with~~ project is a simple-cycle power plant, not designed, or intended, or permitted for base load generation and is therefore not subject to the SB 1368 EPS.

14. Page 14, Conclusions of Law, #12, change to read as follows:

Any new natural-gas-fired power plant that we certify must:

- a) not increase the overall system heat rate for natural gas plants;
- b) not interfere with generation from existing renewables or with the integration of new renewable generation; and
- c) have the ability to reduce system-wide GHG emissions.

The A2PP meets these requirements.

AIR QUALITY

15. Page 1, add the following text after the second paragraph:

Our evaluation also encompasses the significance criteria and method of analysis used by Staff. More particularly, Staff characterized air quality impacts as follows: All project emissions of nonattainment criteria pollutants and their precursors (NO_x, VOC, PM₁₀, PM_{2.5}, SO_x, and NH₃) are considered significant and must be mitigated. For short-term construction activities that essentially cease before operation of the power plant, Staff assessment is qualitative and mitigation consists of controlling construction equipment tailpipe emissions and fugitive dust emissions to the maximum extent feasible. For operating emissions, the mitigation includes both the Best Available Control Technology (BACT) and emission reduction credits (ERC) or other valid emission reductions to offset emissions of both nonattainment criteria pollutants and their precursors.

The ambient air quality standards used by Staff as the basis for characterizing project impacts are health-based standards established by the California Air Resources Board and U.S. EPA. They are set at levels that contain a margin of

safety to adequately protect the health of all people, including those most sensitive to adverse air quality impacts such as the elderly, persons with existing illnesses, children, and infants.

16. Page 14, third paragraph, last sentence, change to read as follows:

Thus, the secondary impacts of ammonia are potentially significant and also require mitigation.

17. Page 16, second paragraph, last sentence, change to read as follows:

~~The District's offset ratio is in accord with Commission policy as established by the precedential Avenal the Avenal Energy Plant Project (08-AFC-1),⁶ recognizing the necessity of reducing emission reductions for all nonattainment pollutants and their precursors at a minimum overall one-to-one ratio. (Ex. 301, pp. 4.1-27—4.1-28.)~~

The District's offset ratio provides emission reductions for all nonattainment pollutants and their precursors at a minimum one-to-one ratio.

18. Page 18, last sentence of page, change to read as follows:

~~Typical operating emission limits~~ Impacts to ambient concentrations are short-term during commissioning; therefore, modeling results with annual or multi-year averaging do not apply during initial commissioning.

19. Page 19, first paragraph, change to read as follows:

Using the U.S. EPA approved model to calculate commissioning emission impacts, the Applicant determined that emission rates~~project impacts due to~~ VOC, PM₁₀, PM_{2.5}, and SO_x emissions are not expected to be higher than normal operation emissions.

20. Page 21, last bullet, change to read as follows:

Facility #N-1801297 (Winco Foods). 1) Proposed a 480 hp Caterpillar Model C9 Tier 3 certified diesel-fired emergency standby IC engine powering an electric generator. 2) Proposed a 1,372 hp Caterpillar Model C32 Tier 2 certified diesel-fired emergency standby IC engine powering an electric generator,~~respectively.~~

21. Page 24, Finding #5, change to read as follows:

The project NO_x and VOC emissions~~would contribute to existing violations of state and federal ambient~~ ozone air quality standards. The project emissions of PM₁₀/PM_{2.5} and particulate matter precursors would contribute to existing violations of ambient PM₁₀ and PM_{2.5} air quality standards. Compliance with

Condition of Certification **AQ-SC7** will mitigate these ozone impacts to less than significant levels.

22. Page 24, Finding #7, change to read as follows:

The SJVAPCD requires the project to mitigate stationary source NO_x, VOC, CO, SO₂, and PM₁₀/PM_{2.5} emissions by employing Best Available Control Technology (BACT).

23. Page 24, Finding #8, change to read as follows:

To reduce NO_x, VOC, and PM_{10/2.5} emissions to insignificant levels under CEQA, Conditions ~~AQ-SC6 and AQ-SC7~~ AQ-SC1 through AQ-SC5 require the project to use low emission ~~maintenance~~ vehicles and fugitive dust controls during construction ~~operation~~.

24. Page 25, Conclusions of Law #2, change to read as follows:

2. Implementation of the mitigation measures described in the record and contained in the Conditions of Certification ensures that the project will not result in significant direct, indirect, or cumulative air quality impacts in conformance with ~~NEPA and~~ CEQA requirements.

WORKER SAFETY/FIRE PROTECTION

25. Page 2, Second Paragraph, second Sentence, change to read as follows:

Specifically, the project owner must develop and implement a “Construction Safety and Health Program” and an “Operations and Maintenance Safety and Health Program,” both of which must be approved by ~~BLM’s Authorized Officer~~ and the Energy Commission’s Compliance Project Manager prior to project construction and operation.

HAZARDOUS MATERIALS MANAGEMENT

26. Page 7, third paragraph, third sentence, change to read as follows:

The natural gas pipeline for the A2PP Project will be designed for Class 1 service because it is a pipeline located within 220 ~~years~~-yards of ten or fewer buildings intended for human occupancy in any 1-mile segment.

27. Page 9, first paragraph, change to read as follows:

(According to Staff, this benchmark – as compared to the others listed above

– evaluates the acceptable level of avoidable exposures to the population instead of merely addressing emergency planning and proper safety practices. Ex. 300, p. 4.4-31.)

28. Page 13, Third Paragraph, Last Sentence, change to read as follows:

“This would result in either 42 or 226 miles of delivery truck travel in the project area per year (with a full load) for all ~~two~~ 12 deliveries.”

29. Page 15, Fourth Paragraph, add the following bullet:

- Crows Landing Flea Market and Ceres Lions Park Wells.

30. Page 17, Findings #5, change to read as follows:

Potential leak and fire risks associated with road crossings by natural gas pipes and other project facilities will be reduced to insignificant levels with PG&E's and the project's ~~and PG&E's~~ compliance with applicable regulatory requirements.

31. Page 17, Findings #7: revise as follows:

While the A2PP site could potentially be subject to earthquakes that result in the failure of hazardous materials storage facilities ~~and/or solar field piping~~, such occurrences are not probable and do not represent a significant risk to the public.

32. Page 18, Conclusion of Law #1: change to read as follows:

1. We therefore conclude that the use of hazardous materials in association with the A2PP Project as mitigated by the conditions of certification will not result in any significant direct, indirect, or cumulative adverse public health and safety impacts.

WASTE MANAGEMENT

33. Page 3, Third Paragraph, First Sentence, change to read as follows:

Non-hazardous liquid wastes include sanitary wastes, and dust suppression, drainage, and equipment wash-water.

BIOLOGICAL RESOURCES

34. Page 2, Third Paragraph, Number 7, change to read as follows:

- 7) that parts of the surrounding area are already relatively noisy and otherwise impacted due to the existing Almond 1 power plant that currently occupies a

portion of the site, 8) agricultural activities that currently occur along the gas pipeline alignment, and 9) current traffic volumes in the area of the site.

35. Page 12, First Full Paragraph, First and Second Sentences, change to read as follows:

To protect any potentially jurisdictional waters and wetlands during construction, we have adopted Condition of Certification BIO-14, which requires the Applicant to include any necessary measures to avoid or minimize impacts to potentially jurisdictional waters and to fully mitigate impacts to potentially jurisdictional features. The final conditions of any required permits from ACOE, CDFG, and/or the Regional Water Quality Control Board for impacts to potentially jurisdictional waters will be included in the final Biological Resources Mitigation Implementation and Monitoring Plan (BRMIMP).

36. Page 16, First Partial Paragraph, delete Last Sentence:

~~Vegetation within the gas pipeline alignment shall be revegetated once construction is complete (Ex. 1), so no net loss of vegetation will occur with construction of the project.~~

37. Page. 17, Finding #6, change to read as follows:

6. The federal and state-listed San Joaquin kit fox and the federal and state-listed giant garter snake could potentially occur within the designated impact area.

38. Page 17, Finding #11, change to read as follows:

11. Pre-construction surveys for ~~the species noted above~~ San Joaquin kit fox, giant garter snake, Western pond turtle, burrowing owl, Swainson's hawk nests and other nests, burrowing owl, and potentially fairy shrimp, shall be conducted to determine their presence or absence within designated work areas with the incorporation of the Conditions of Certification

39. Page 18, Finding #16, change to read as follows:

Any project-related impacts to potentially jurisdictional waters are expected to be temporary and less than significant since PG&E shall be drilling under any potentially jurisdictional canals, thus avoiding direct impacts to these canals, and features will be restored to pre-project conditions.

40. Page 19, BIO-2, delete seventh bullet:

- ~~• inspect for installation of structures that prevent entrapment or allow escape during periods of construction inactivity at the end of each day;~~

41. **Page 29, BIO-12 Verification: change to read as follows and move from Verification section to become the last sentence of the Condition of Certification:**

A mapfigure shall be prepared for any sightings of GGS or WPT.

42. **Page 29, BIO-13: change to read as follows:**

Any dewatered habitat ~~should~~ shall remain dry for at least 15 consecutive days after April 15 and prior to excavating or filling of the dewatered habitat.

43. **Page 30, BIO-14: change to read as follows:**

3. The project owner shall ~~herein~~ grants to the CPM and to CDFG and/or ACOE employees and/or their representatives the right to enter the project site at any time to ensure compliance with the terms and conditions and/or to determine the impacts of storm events, maintenance activities, or other actions that might affect the jurisdictional waters. The CPM, ACOE, or CDFG may, at their discretion, review relevant documents maintained by the project operator, interview the operator's employees and agents, inspect the work site, and take other actions to assess compliance with or effectiveness of mitigation measures.

SOIL AND WATER RESOURCES

44. **Page 1, Footnote 36: change to read as follows:**

The Biological Resources section of this Decision discusses the potential impacts of project construction on potentially jurisdictional waters and includes related ~~Conduits~~ Conditions of Certification to ensure any such impacts are reduced ~~s~~ to less than significant levels.

45. **Page 12, Second Paragraph, Last Sentence, change to read as follows:**

Some of tThe canal water comes from TID-owned agricultural wells that are used to maintain location groundwater levels.

46. **Page 18, #11 Agency and Public Comments, change to read as follows:**

~~There were no agency and public comments.~~

Staff received comments from the Stanislaus County Public Works Department regarding compliance with the County's NPDES General Permit, and ensured that compliance. (Ex. 300, 4.9-14; **SOIL&WATER-1, -3**). Staff also worked with

the Regional Water Quality Control Board regarding Waste Discharge Requirements. (Ex. 301, 4.9-16).

47. Page 19, SOIL&WATER-2, change to read as follows:

The Drainage, Erosion and Sediment Control Plan (DESCP) shall contain the following elements.

48. Page 20, Clearing and Grading, change to read as follows:

~~Existing and proposed topography tying in proposed contours with existing topography shall be illustrated.~~ The plan shall provide both existing and proposed topography that illustrates the connections of proposed contours to existing topography.

CULTURAL RESOURCES

49. Page 10, third paragraph, last sentence, change to read as follows:

Additionally and, these types of structures need not be recorded on California Department of Parks and Recreation (DPR) 523 forms.

50. Page 14, #6. Potential Direct and Indirect Impact, second paragraph, second to last sentence, change to read as follows:

The evidence suggests that ~~removal of the old pipe and it's~~ the reinforcement segment with a pipe would disturb some previously undisturbed sediments on the sides and bottom of the ~~original~~ installation trench.

51. Page 15, First Bullet, change to read as follows:

- retaining a designated Cultural Resources Specialist (CRS) and Cultural Resources Monitor (CRM) who will be available during the entire construction period to evaluate any unanticipated discoveries.

52. Page 27, CUL-5 Verification, change to read as follows:

At least 40 days prior to the start of ground disturbance, the project owner shall provide the AFC, data responses, confidential cultural resources documents, and the Energy Commission ~~FS~~Staff Assessments to the CRS and the subject maps and drawings to the CRS and CPM.

53. Page 30, CUL-8 Verification, change to read as follows:

Prior to and for the duration of ground disturbance, the project owner shall provide Worker Environmental Awareness Program (WEAP) training to all new workers within their first week of employment at the project site, along the linear facilities routes, ~~and~~ at laydown areas, roads, and other ancillary areas.

54. Page 31, CUL-8 Verification, change to read as follows:

9. A sticker that shall be placed on hard hats indicating that ~~environmental~~ cultural resources training has been completed.

55. Pages 34-35, CUL-10 Verification, change to read as follows:

At least 30 days prior to the start of ground disturbance, the project owner shall provide the CPM and CRS with a letter confirming that the CRS, alternate CRS, and CRMs have the authority to halt ground disturbance in the immediate vicinity of a cultural resources discovery, the ~~area~~ distance to be determined by the CRS in consultation with the CPM, and that the project owner shall ensure that the CRS notifies the CPM within 24 hours of a discovery, or by Monday morning if the cultural resources discovery occurs between 8:00 AM on Friday and 8:00 AM on Sunday morning.

GEOLOGICAL AND PALEONTOLOGICAL RESOURCES

56. Page 7, first full paragraph, first sentence, change to read as follows:

Based on the above discussion, we find that the potential for significant adverse cumulative impacts to the proposed project from geologic hazards during its design life is low and the potential for project impacts to geologic, mineralogic, and paleontologic resources is also low.

57. Page 8, Finding #11, change to read as follows:

11. The project owner will implement several mitigation measures to avoid impacts to any paleontological resources discovered, including worker education, preparing a Paleontological Monitoring and Mitigation Plan, and having a Paleontologic Resources Specialist and/or Paleontologic Resources Monitor on-site.

LAND USE

58. Page 6, first paragraph, change to read as follows:

Agricultural lands near the project site include ~~fields of nuts trees almond~~ orchards, alfalfa, and grass.

59. Page 7, Figure 1:

Replace Figure 1 with the attached map.

60. Page 8, third paragraph, second sentence, change to read as follows:

Within the City of Ceres, the line would traverse areas designated as General Industrial, Light Industrial, Community Facilities and Low-Density Residential ~~zones~~. Within the City of Modesto, this line would traverse areas designated as ~~land in~~ Industrial and Residential ~~zones~~.

61. Page 10, second paragraph, fourth sentence, change to read as follows:

~~Corridor 2 construction will result in the de minimus conversion of Prime Farmland.~~ We find that the impacts of this small conversion of Prime Farmland will not result in a substantial (or potentially substantial) adverse change to agricultural lands in the area.

62. Page 14, first full paragraph, second sentence, change to read as follows:

Within the City of Ceres, the line would traverse areas designated as General Industrial, Light Industrial, Community Facilities and Low Residential ~~zones~~.

63. Page 14, d. Modesto Zoning Code, second sentence, change to read as follows:

Within the City of Modesto, this line would traverse areas designated as ~~land in~~ Industrial and Residential ~~zones~~.

64. Page 16, #8. Public and Agency Comments, change to read as follows:

~~There were no public and agency comments received on the topic of land use.~~

Staff received comments from the City of Ceres regarding long term possible expansion of Crows Landing Road, and resolved that issue. (Ex. 300, 4.5-7, 4.5-13 - 14.)

65. Page 17, Finding #1, change to read as follows:

1. The project will convert four square feet Prime Farmland to nonagricultural use. The conversion of this ~~smallest minimum~~ amount of farmland would not result in significant impacts nor does it necessitate compensation mitigation under the Stanislaus County General Plan.

TRAFFIC AND TRANSPORTATION

66. Page 10, first paragraph, change to read as follows:

To ensure that ~~construction~~ construction traffic does not contribute to decreases in LOS, Staff proposed Conditions of Certification **TRANS-2** and **TRANS-3**.

67. Page 15, before Findings of Fact, add the following:

5. Agency and Public Comments

Staff received comments regarding potential traffic impacts from the City of Ceres and the Stanislaus County Department of Public Works. Staff addressed the City's school bus route concerns. (Ex. 300, 4.10-14; **TRANS-1, HAZ-5**.) Staff corrected County and County LOS references (Ex. 300, e.g. 4.10-18), and ensured the project owner will seek necessary traffic plan approvals from the County (Ex. 300, 4.10-13, **TRANS-2, -3**.)

68. Page 16, Finding #8, change to read as follows:

8. The A2PP as proposed with conditions of certification would not result insignificant direct, indirect or cumulative traffic and transportation impacts, and therefore, would have no environmental justice issues.

69. Page 16, TRANS-1, change to read as follows:

Mitigation measures may include setting certain travel times for workers, ~~as well as limiting transport of~~ equipment and materials to avoid school bus schedules, ~~or as well as requiring construction workers to receive training a program to~~ construction workers about bus stop and student safety.

70. Page 16, TRANS-1 Verification, change to read as follows:

This school Traffic Control Plan may be included in the Traffic Control Plan required pursuant to **TRANS-2**.

71. Page 17, TRANS-2, change to read as follows:

TRANS-2 The project owner shall prepare a construction traffic control and implementation plan for the project and its associated facilities. The project owner shall consult with the City of Ceres, Caltrans, the California Highway Patrol, and, in regards to the gas pipeline, the Stanislaus County Public Works Department ~~(for the gas pipeline)~~, in the preparation of the traffic control and implementation plan.

SOCIOECONOMICS & ENVIRONMENTAL JUSTICE

72. Page 3, Fourth Paragraph, First Sentence, change to read as follows:

The evidence indicates that all construction labor and the majority of operations workforce would commute from the surrounding communities of Merced, ~~San Joaquin~~ Stanislaus, and Santa Clara Counties.

73. Page 6, third full paragraph, first sentence, change to read as follows:

Given the above-discussed projections for a commuting labor force and possible relocation of four full-time employees, the project will not require or contribute to the need for construction of new parks.

74. Page 10, first paragraph, second sentence, change to read as follows:

The California Government Code ~~asserts that only~~ limits authority to impose school facilities fees to the CUSD ~~has authority to impose school facilities fees.~~

75. Page 13, Findings #1, change to read as follows:

1. The A2PP Project will draw primarily upon the labor force in Merced, ~~San Joaquin~~ Stanislaus, and Santa Clara counties, for both the construction and operation workforce.

NOISE AND VIBRATION

76. Page 4, Assumptions and Baseline Conditions, first paragraph, change to read as follows:

Staff further assumes that an increase in a background noise levels up to 5 dBA in a residential setting is insignificant and that an increase of 10 dBA in such a setting is potentially significant.

VISUAL RESOURCES

77. Page 5, Figure 1, add footnote to read as follows:

The correct location of the lay down area is shown in Land Use Figure 1.
(Attached.)

Dated: December 10, 2010 at Sacramento, California.

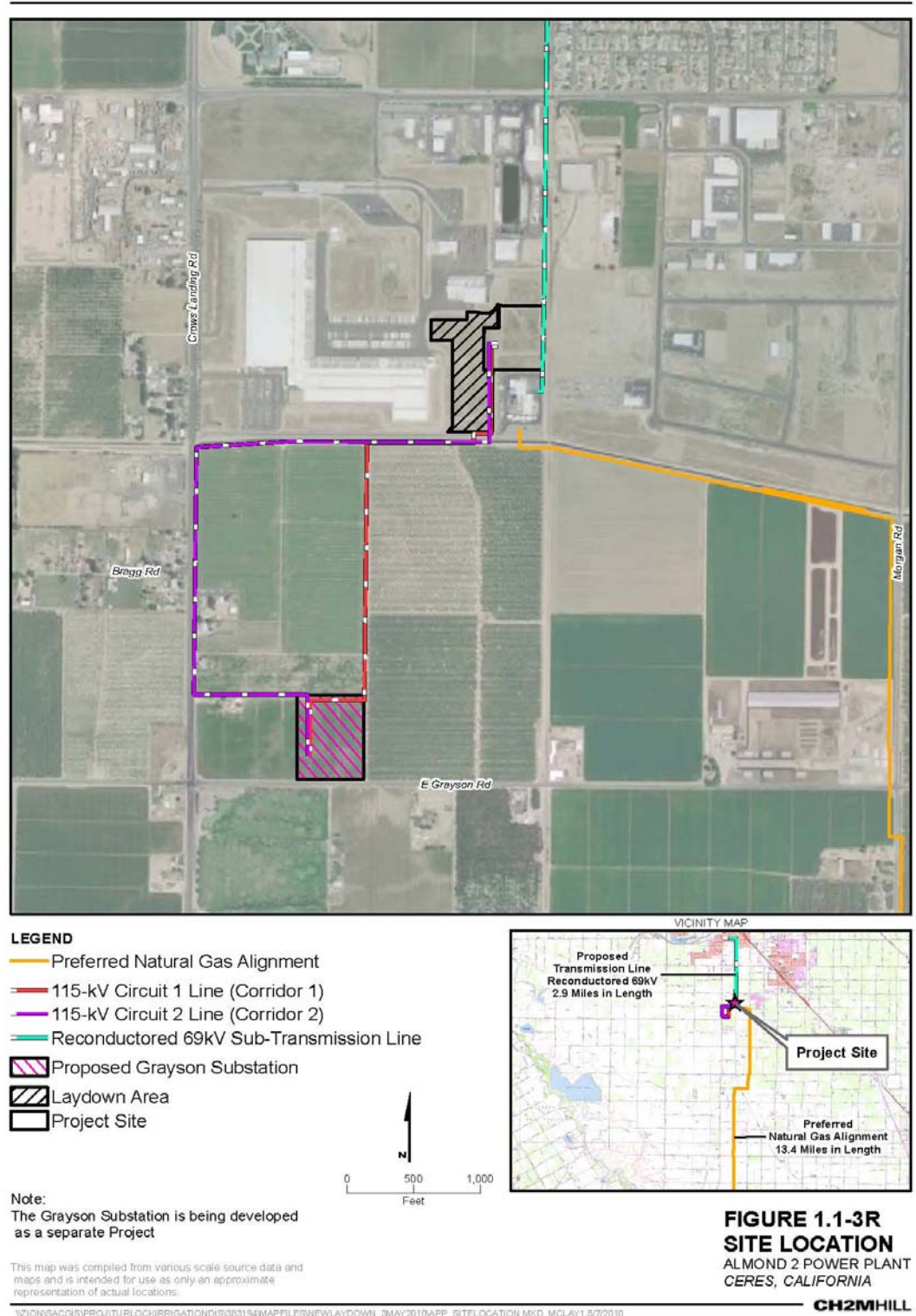
A handwritten signature in black ink, appearing to read 'K. Douglas', written over a horizontal line.

KAREN DOUGLAS
Chairman and Presiding Member
Almond 2 AFC Committee

A handwritten signature in black ink, appearing to read 'Anthony Eggert', written over a horizontal line.

ANTHONY EGGERT
Commissioner and Associate Member
Almond 2 AFC Committee

Figure 1.1-3 R – Visual and Land Use





BEFORE THE ENERGY RESOURCES CONSERVATION AND DEVELOPMENT
COMMISSION OF THE STATE OF CALIFORNIA
1516 NINTH STREET, SACRAMENTO, CA 95814
1-800-822-6228 – WWW.ENERGY.CA.GOV

APPLICATION FOR CERTIFICATION

FOR THE TID ALMOND 2 POWER PLANT PROJECT

Docket No. 09-AFC-2

PROOF OF SERVICE
(Revised 7/30/10)

APPLICANT

Turlock Irrigation District
Randy Baysinger,
Assistant General Manager
Power Supply
333 East Canal Drive
Turlock, CA 95381-0940
rcbaysinger@tid.org

Turlock Irrigation District
George A. Davies IV
P.O. Box 949
Turlock, CA 95381-0949
gadavies@tid.org

APPLICANT'S CONSULTANTS

Susan Strachan
Strachan Consulting
P.O. Box 1049
Davis, CA 95617
strachan@dcn.org

Sarah Madams, Project Manager
CH2MHILL
2485 Natomas Park Drive,
Ste. 600
Sacramento, CA 95833
smadams@ch2m.com

COUNSEL FOR APPLICANT

Jeff Harris, Legal Counsel
Ellison, Schneider, and Harris
2600 Capitol Ave., Suite 400
Sacramento, CA 95816-5905
jdh@eslawfirm.com

INTERESTED AGENCIES

California ISO
e-recipient@caiso.com

INTERVENORS

California Unions for Reliable
Energy (CURE)
Attn: Tanya Gulesserian,
Loulana A. Miles, Marc D. Joseph
Adams Broadwell Joseph &
Cardozo
601 Gateway Boulevard
Suite 1000
South San Francisco, CA 94080
tgulesserian@adamsbroadwell.com
lmiles@adamsbroadwell.com

ENERGY COMMISSION

KAREN DOUGLAS
Chairman and Presiding Member
kldouglas@energy.state.ca.us

ANTHONY EGGERT
Commissioner and Associate
Member
aeggert@energy.state.ca.us

Kourtney Vaccaro
Hearing Officer
kvaccaro@energy.state.ca.us

Felicia Miller
Siting Project Manager
fmiller@energy.state.ca.us

Lorraine White
Adviser to Commissioner Eggert
lwhite@energy.state.ca.us

Robin Mayer
Staff Counsel
rmayer@energy.state.ca.us

Kerry Willis
Co-Staff Counsel
kwillis@energy.state.ca.us

Jennifer Jennings
Public Adviser's Office
e-mail service preferred
publicadviser@energy.state.ca.us

DECLARATION OF SERVICE

I, RoseMary Avalos, declare that on December 10, 2010, I served by U.S. mail and filed copies of the ERRATA TO THE PRESIDING MEMBER'S PROPOSED DECISION for the ALMOND 2 PROJECT. The original document, filed with the Docket Unit, is accompanied by a copy of the most recent Proof of Service list, located on the web page for this project at:

[\[http://www.energy.ca.gov/sitingcases/almond\]](http://www.energy.ca.gov/sitingcases/almond).

The documents have been sent to both the other parties in this proceeding (as shown on the Proof of Service list) and to the Commission's Docket Unit, in the following manner:

(Check all that Apply)

FOR SERVICE TO ALL OTHER PARTIES:

- ☒ sent electronically to all email addresses on the Proof of Service list;
- ☐ by personal delivery;
- ☒ by delivering on this date, for mailing with the United States Postal Service with first-class postage thereon fully prepaid, to the name and address of the person served, for mailing that same day in the ordinary course of business; that the envelope was sealed and placed for collection and mailing on that date to those addresses **NOT** marked "email preferred."

AND

FOR FILING WITH THE ENERGY COMMISSION:

- ☒ sending an original paper copy and one electronic copy, mailed and emailed respectively, to the address below (*preferred method*);

OR

- ☐ depositing in the mail an original and 12 paper copies, as follows:

CALIFORNIA ENERGY COMMISSION

Attn: Docket No. 09-AFC-2
1516 Ninth Street, MS-4
Sacramento, CA 95814-5512
docket@energy.state.ca.us

I declare under penalty of perjury that the foregoing is true and correct, that I am employed in the county where this mailing occurred, and that I am over the age of 18 years and not a party to the proceeding.

Original Signed By: _____
ROSEMARY AVALOS
Hearing Adviser's Office