
BLYTHE ENERGY PROJECT PHASE II

DOCKET	
02-AFC-1C	
DATE	OCT 04 2011
RECD.	OCT 04 2011

AMENDMENT
(02-AFC-1C)

BLYTHE II AMENDMENT SUPPLEMENT #3

Submitted to
California Energy Commission

Submitted by
Caithness Blythe II, LLC

October 2011

October 4, 2011

California Energy Commission
Docket Unit
1516 Ninth Street
Sacramento, CA 95814-5512

Subject: **BLYTHE II AMENDMENT SUPPLEMENT #3**
 BLYTHE II ENERGY PROJECT PHASE II
 DOCKET NO. 02-AFC-1C

Enclosed for filing with the California Energy Commission are one (1) original and one (1) copy of the **BLYTHE II AMENDMENT SUPPLEMENT #3 FOR THE BLYTHE II ENERGY PROJECT PHASE II**, Docket No. 02-AFC-1C.

This Blythe II Amendment Supplement #3 includes the following;

- Proposed Conditions of Certification in Transmission System Engineering and Traffic and Transportation
- Revised Figures 6-2, 6-3, and 6-4.
- One Line Diagram at Colorado River Substation Figure 6-5(b)
- Revised Intermediate, Dead End, and A-Frame Structures

Sincerely,



David L. Wiseman
Counsel to Caithness Blythe II, LLC

Scott A. Galati
David L. Wiseman
GALATIBLEK LLP
455 Capitol Mall
Suite 350
Sacramento, CA 95814
(916) 441-6575

STATE OF CALIFORNIA

Energy Resources
Conservation and Development Commission

In the Matter of:

**BLYTHE ENERGY PROJECT
PHASE II AMENDMENT**

DOCKET NO: (02-AFC-1C)

**BLYTHE II AMENDMENT
SUPPLEMENT #3**

Caithness Blythe II, LLC (Caithness) submits this Supplement #3 for the Blythe II Amendment. Supplement #3 provides additional and modified information regarding the Transmission System Engineering portion of the Amendment. In addition this Supplement #3 proposes a modification to Traffic and Transportation condition of certification TRANS-9.

Technical Area: Transmission System Engineering

Proposed Additions to the Conditions of Certification

TSE-10 The Project Owner shall obtain confirmation from Southern California Edison that a transmission line from the Project to Colorado River Substation will interconnect through the Keim Station.

Verification: At least 60 days prior to the start of rough grading or construction, the Project Owner shall submit to the CPM confirmation Southern California Edison indicating that SCE is aware the project will interconnect into the Keim Substation and deliver from Keim to the Colorado River Substation.

TSE-11 The Project Owner shall not complete construction of its generation tie line into the Keim Substation prior to the commercial operation of the Keim Substation.

Verification: At least 60 days prior to beginning construction of the generation tie line the Project Owner shall submit to the CPM a schedule for commercial operation of the Keim Substation demonstrating that the Keim Substation will be commercially operable prior to completion of the generation tie line.

Technical Area: Traffic and Transportation

Proposed Modification to Condition of Certification TRANS-9

TRANS-9 The Project Owner shall not commence construction of BEP II until the following are accomplished:

1. A remark is placed on the Airport's Automated Surface Observation System (ASOS), or equivalent broadcast, advising pilots to avoid low-altitude direct overflight of the power plant;
2. The VFR traffic pattern to runway 26 is changed from left-hand turns to right-hand turns; and;
3. A runway, other than runway 26, is designated as the primary calm wind runway.

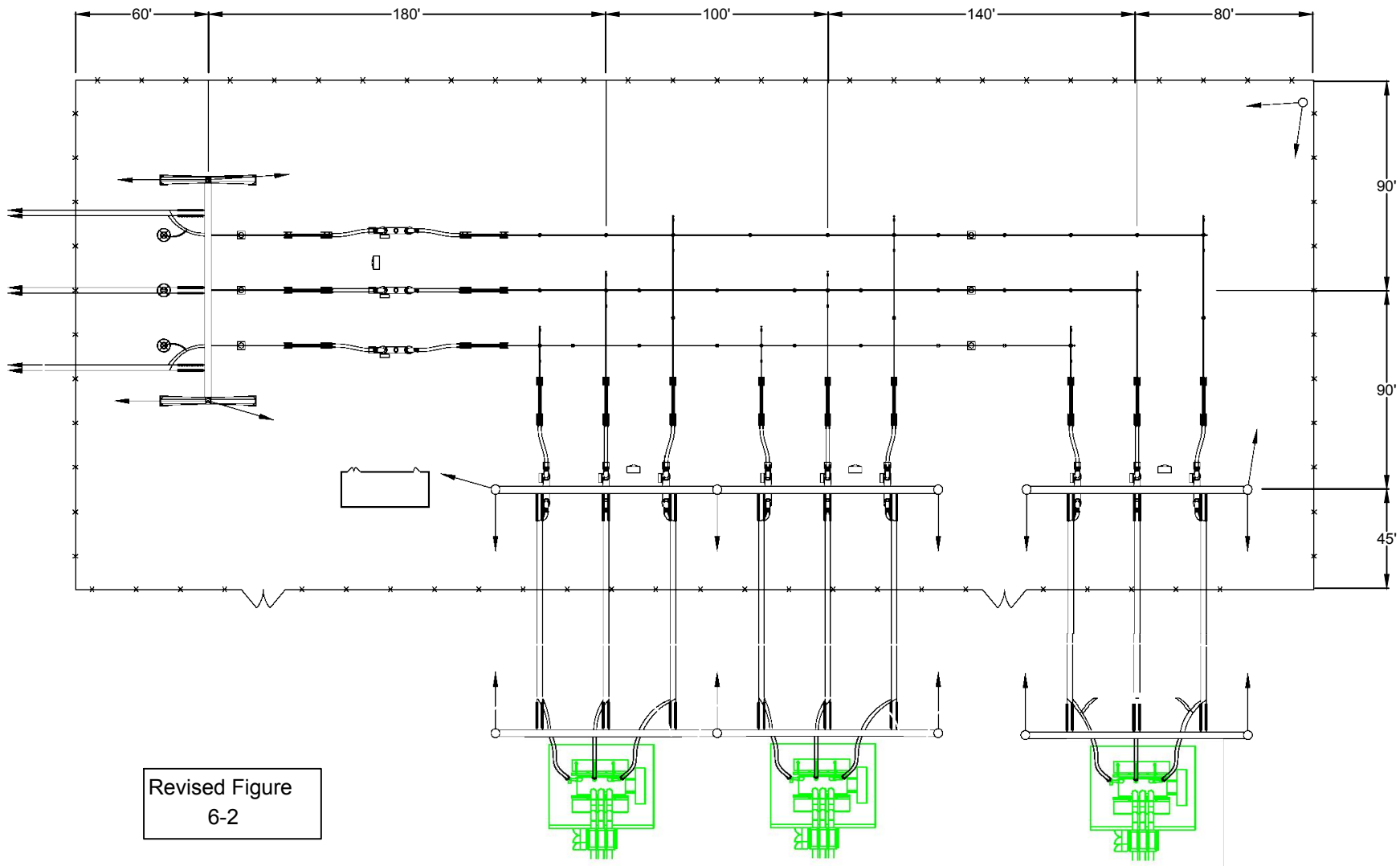
Verification: At least 60 days prior to the start of rough grading or construction, the Project Owner shall submit to the CPM documentation demonstrating the implementation of this condition-, ***including documentation the FAA has approved the VFR traffic pattern to runway 26 from left-hand turns to right-hand turns and a runway, other than runway 26, is designated as the primary calm wind runway.***

David L. Wiseman
Counsel to Caithness, Blythe II LLC

ATTACHMENTS

ATTACHMENT #1

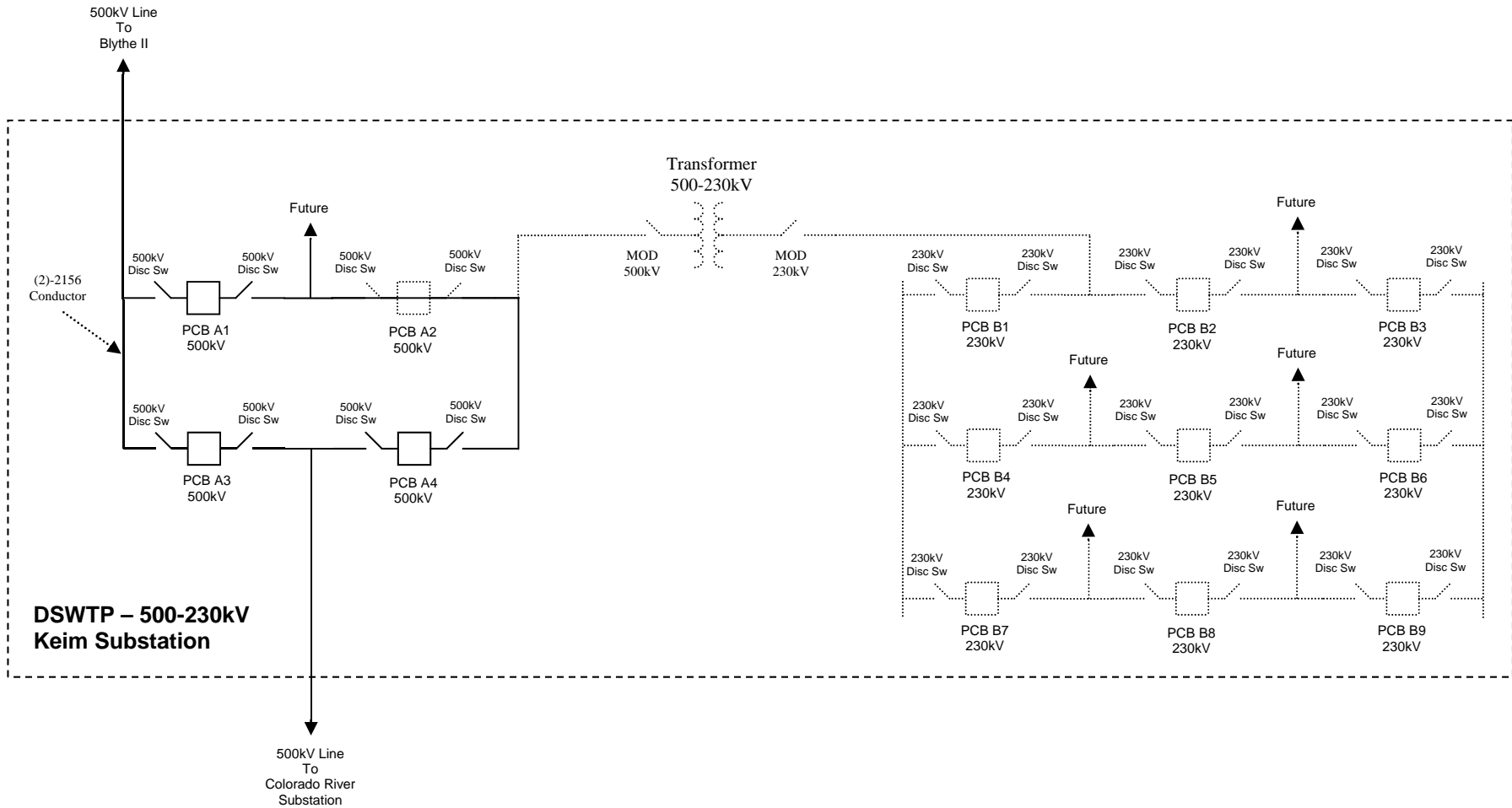
REVISED FIGURE 6-2



Revised Figure
6-2

ATTACHMENT #2

REVISED FIGURE 6-3



REVISED FIGURE 6-3

DATE: 09/14/11
 REV: C

DSWTP - KEIM SUBSTATION
 ONE-LINE

DWG NO
002

ATTACHMENT #3

REVISED FIGURE 6-4

DSWTP: 230-500KV KEIM SUSTATION

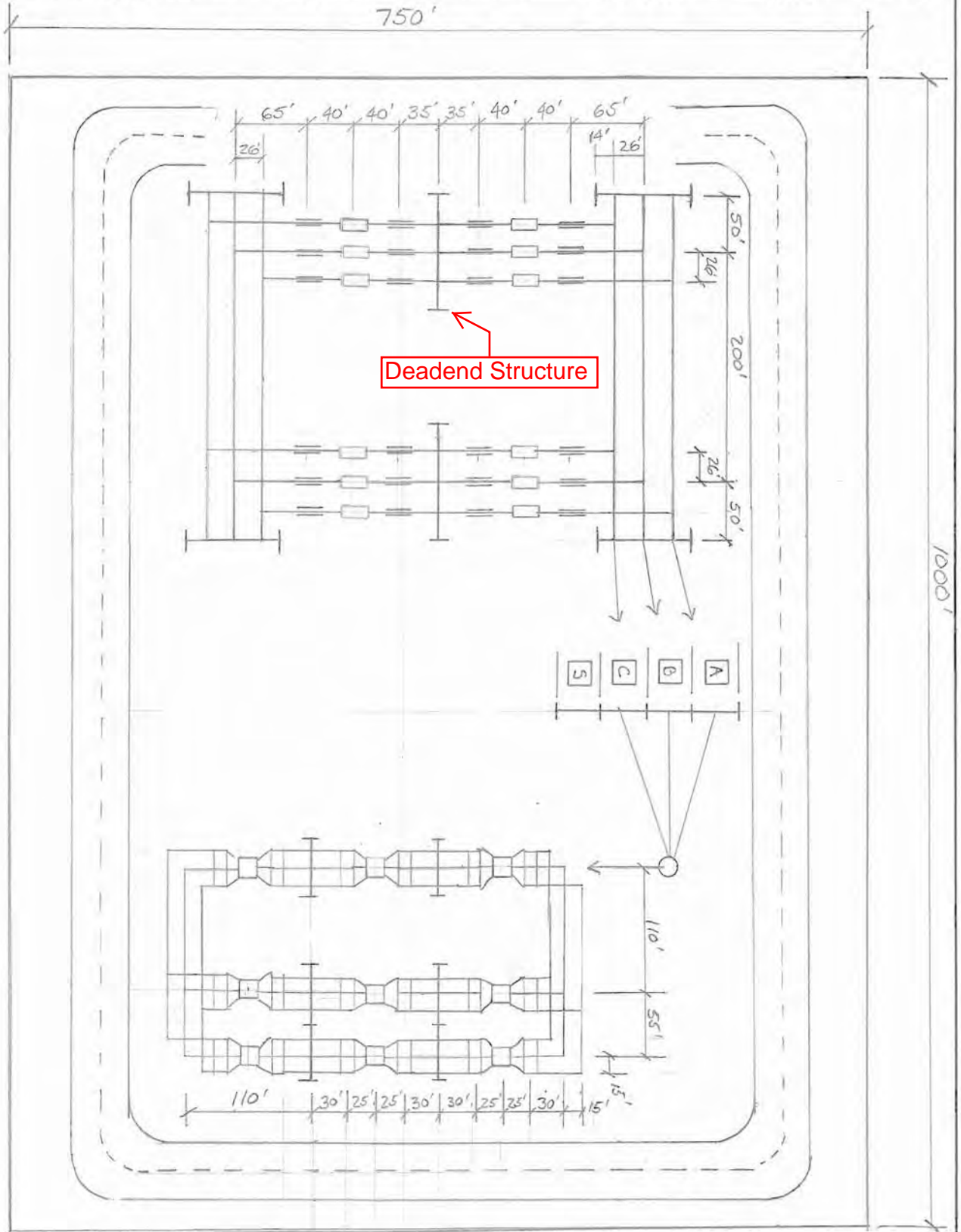
SUBJECT PRELIMINARY
PLOT PLAN

JOB NO. _____

SHEET NO. _____ OF _____

BY CC DATE _____

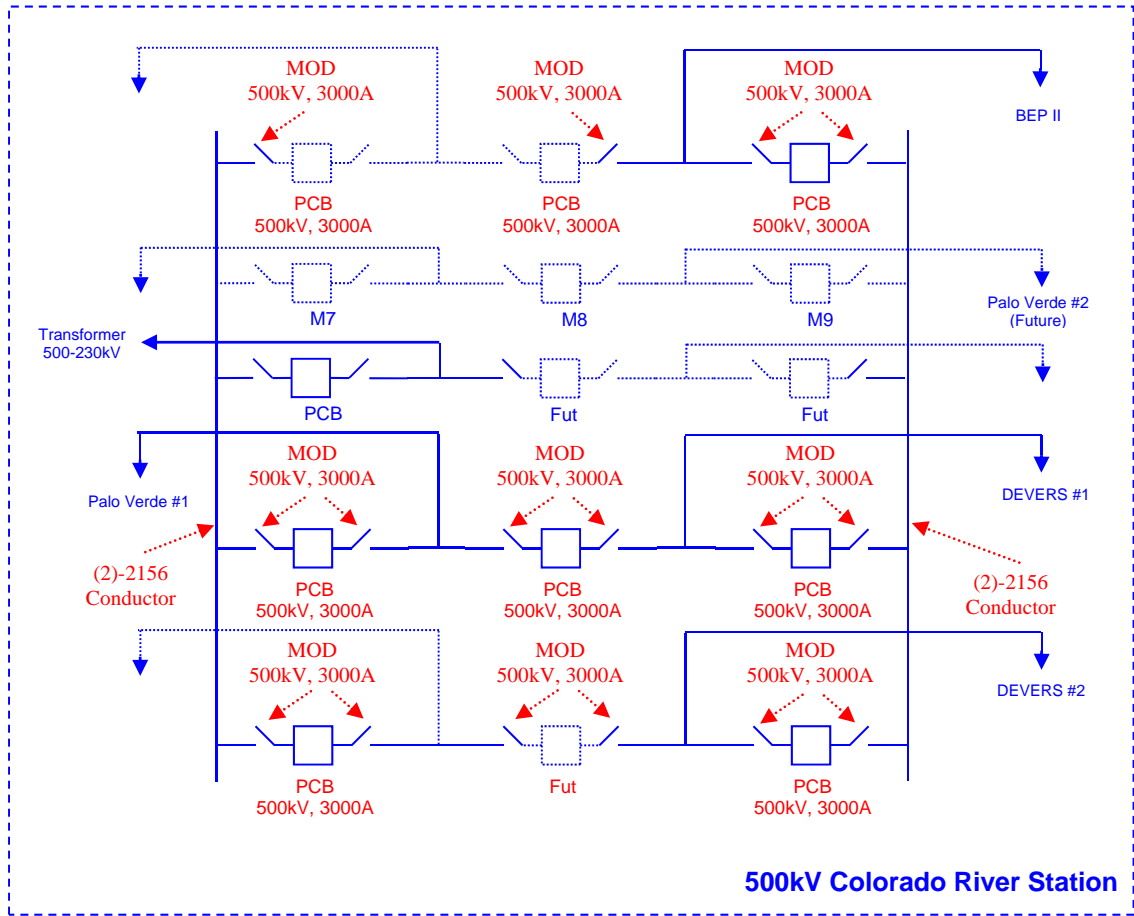
CK. BY _____ DATE _____



REVISED
FIGURE
6-4

ATTACHMENT #4

FIGURE 6-5(b)



APPENDIX

FIGURE 6-5(b)

DATE: 09/30/11
 REV: A

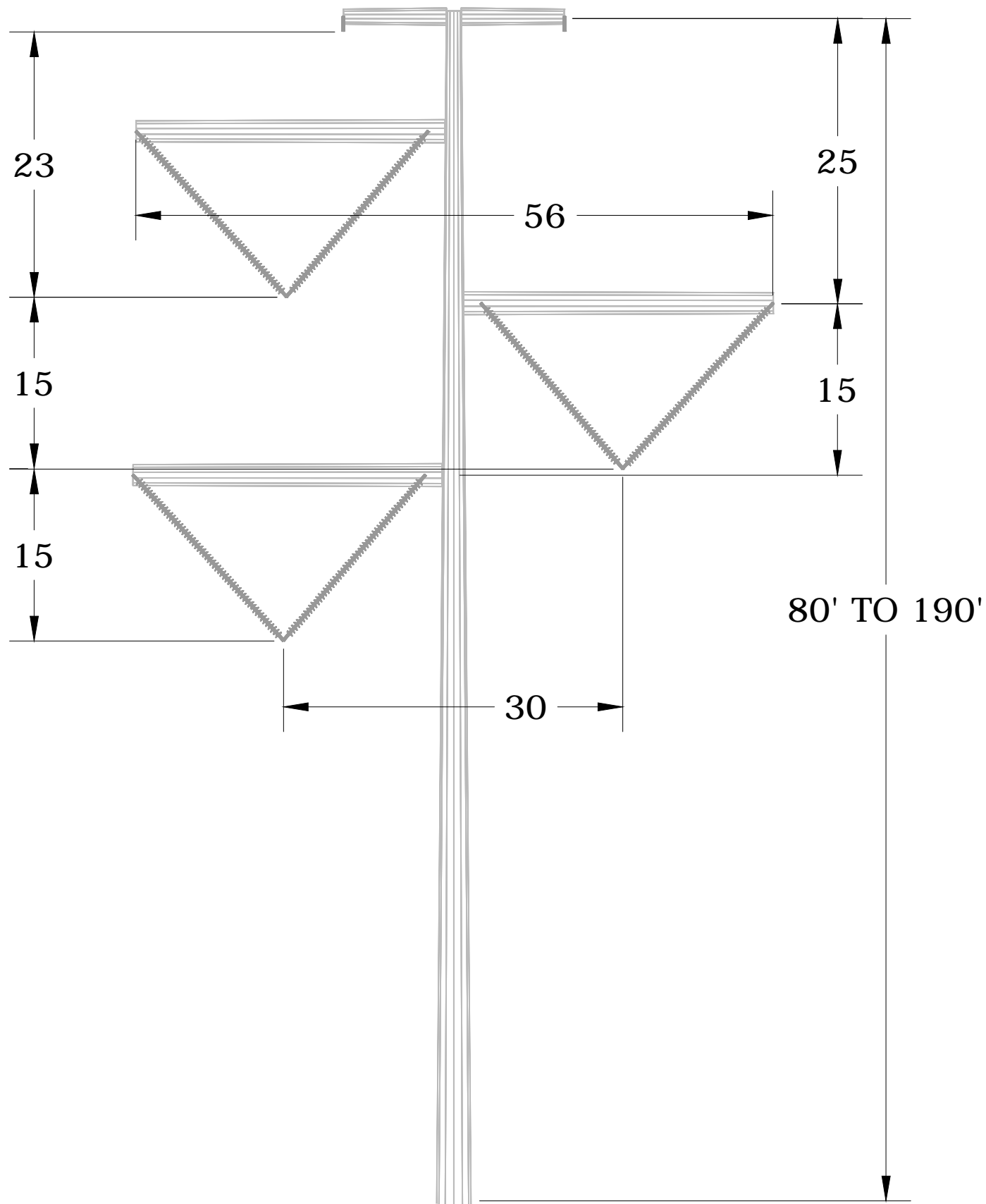
**BLYTHE ENERGY
 PROJECT. II
 ONE-LINE**

DWG NO

001

ATTACHMENT #5

REVISED INTERMEDIATE STRUCTURE



DESERT SOUTHWEST 500kV
TRANSMISSION LINE

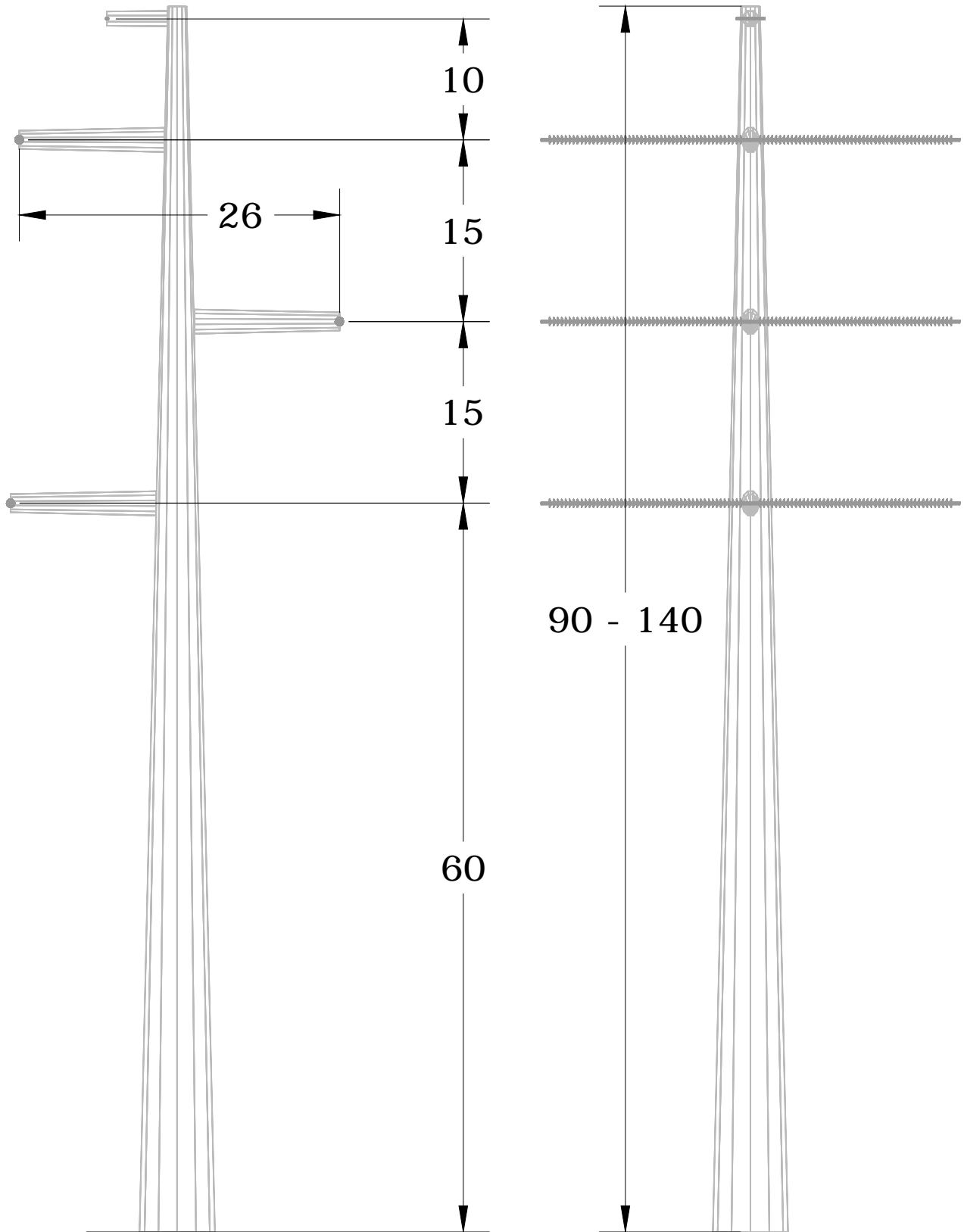
TUBULAR STEEL TANGENT

STEEL POLES

7/18/2011
REV. NO 1

ATTACHMENT #6

REVISED DEADEND STRUCTURE



DESERT SOUTHWEST 500kV
TRANSMISSION LINE

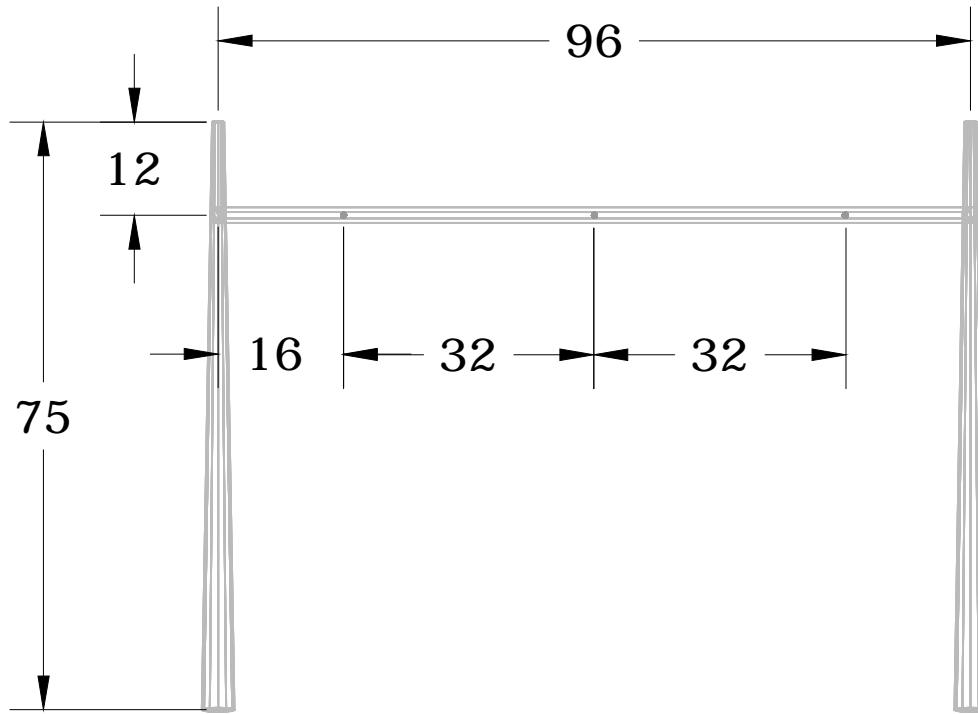
TUBULAR STEEL DEADEND

STEEL POLES

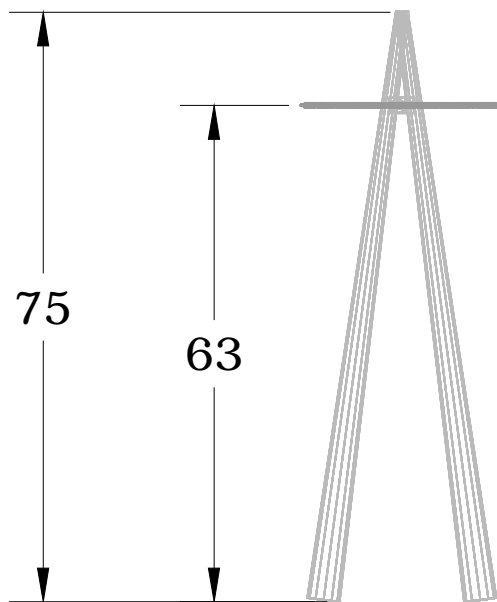
7/18/11	
REV. NO	1

ATTACHMENT #7

REVISED A-FRAME STRUCTURE



ELEVATION



SIDE VIEW

DESERT SOUTHWEST 500kV
TRANSMISSION LINE

500kV A-FRAME

STEEL POLES

7/19/2011
REV. NO 0