

**From:** "Head, Sara" <Sara.Head@aecom.com>  
**To:** "Felicia Miller" <Fmiller@energy.state.ca.us>  
**CC:** "Tony Penna" <tonypenna@inlandenergy.com>, <MICHAEL.CARROLL@LW.com>, "Ca..."  
**Date:** 5/19/2009 6:51 PM  
**Subject:** FW: Palmdale Hybrid - Land Use  
**Attachments:** Figure\_5-7-5\_Farmland\_Before.pdf; Figure\_5-7-5R\_Farmland\_After.pdf

<b>DOCKET</b>	
<b>08-AFC-9</b>	
<b>DATE</b>	May 19 2009
<b>RECD.</b>	MAY 20 2009

Felicia -

Thank you for the clarification sent last week. I reviewed the Jan. 12, 2009 responses to Data Request Set 1 -- As requested in Data Request 33, the only map that was provided in the larger scale was the Farmland map, Figure 5.7-5, not the other land use maps. The Farmland map had been broken into 14 Mapsheets to cover the linears at the 1:24,000 scale. Of the 14 Mapsheets, there are changes to the linears only on Mapsheets 01 and 11. I have attached a "before" and "after" of only these two mapsheets to illustrate the differences.

Mapsheet 01 shows the changes to the potable water pipeline, natural gas pipeline, and the sanitary wastewater line. The potable water pipeline follows the onsite access road down from the site entrance and into the power block from the west -- instead of continuing further east along E Ave M and then turning south on 15th St E (eastern border of the PHPP plant site and Plant 42 boundary) into the power block from the east. The natural gas pipeline also follows the onsite access road into the new gas metering station on the western boundary -- instead of going to the power block from the east. The sanitary wastewater line now goes up 15th St E but turns east at E Ave M to interconnect with a sanitary sewer main about a mile to the east of the plant site -- instead of continuing up 15th St E about a mile to the north.

Mapsheet 11 shows the changes to the transmission line to enter the Vincent substation from the south instead of from the north.

I believe that these before and after comparison maps more clearly show the changes made to the linears. In the case of the Farmland maps, they also show that these changes have no affect on the farmland designations, since the designations along the before and after linear routes are the same.

Based on the attached maps that more clearly show the changes to the linear routes, please let me know if there is still a need for Figures 5.7-2a and 5.7-3a (or the Mapsheet 01 portion of these figures) to be provided at a larger scale. If you look at the small scale figures that were provided on May 1, 2009 (Attachment DR-142), I think the scale is sufficient to tell that there is no change to the Palmdale general plan or zoning for the potable water line and gas pipeline since the changes are still entirely within the plant site, i.e., they now come south along the western side of the property instead of the eastern side. The sanitary wastewater pipeline now lies along the boundary of Plant 42 (with the Industrial zoning on the north side of the street) instead of going north in the Palmdale industrial zone. I think it is also clear that there is no change to Los Angeles County plan or zoning in Figures 5.7-2c or 5.7-3c due to the minor change in the transmission line connection to the Vincent substation.

Please let me know if this response is sufficient, or if additional figure revisions are needed. I can send the revised Figure 5.7-5 with all 14 of the mapsheets (including the 2 attached) if that would be helpful.

Sara

Sara J. Head, QEP

AECOM Environment

T 805-388-3775 ext 227

C 805-320-8059

sara.head@aecom.com

---

From: Felicia Miller [mailto:Fmiller@energy.state.ca.us]  
Sent: Tuesday, May 12, 2009 4:01 PM  
To: Head, Sara  
Subject: RE: Palmdale Hybrid - Land Use

Hi Sara,

Here's clarification from my land use tech - if you have additional questions, please let me know. Felicia

The AFC figures were also at the less detailed scale, but in Data Request set 1, we asked for better maps and they provided them. I need to know what portions of the routes were revised, and I need to be able to see the maps at a legible scale to discern what GP LU designations, zoning designations and important farmland designations they actually traverse so that I can analyze the impacts and conduct the LORS consistency analysis. So, if they provide the plant site area with the two water lines in the larger scale (showing how/where the routes changed), that would be helpful.

>>> "Head, Sara" <Sara.Head@aecom.com> 5/12/2009 2:58 PM >>>

Felicia -

We provided the revised land use figures at the same scale as provided in the AFC, as the Data Request 142 (see below) did not request a different scale. Data Request 142 is only with respect to the revised sanitary wastewater line, which goes about 1 mile from the plant site, and the potable water line, which is mostly on the plant site. We could provide just this small area showing the plant site and the revised water lines (seems to be what the request below is asking for), but I am doubtful that a larger scale on only this small area would prove very useful for Staff. Therefore, I suggest that we send you one set of the figures (specifically, Figures 5.7-2a, 5.7-2c, 5.7-3a, 5.7-3c, and 5.7-5) that are produced as oversized maps, roughly 4 ft x 3 ft, that would show the entire Project area, including the transmission line segments, on one map. If we produce the figures with the same area covered, the scale would be about 1 inch = 0.6 miles, or we could crop the figures to match a 1 inch = 0.5 mile scale. Please let me know if Staff would like to get a set of the oversized figures as described, current area or cropped, or if they are looking to just get the plant site area with the two water lines in the larger scale. We should be able to send the larger scale figures by next Monday if that is what Staff wants.

Thanks for clarifying this request.

Sara

Sara J. Head, QEP

AECOM Environment

T 805-388-3775 ext 227

C 805-320-8059

sara.head@aecom.com

## BACKGROUND

Page PD-4 states that the routes for the sanitary wastewater pipeline and potable water line have changed, and provides text narrative describing the location of these linear routes with Figure PD-1 illustrating these routes.

## DATA REQUEST

142. Please update the applicable AFC Land Use figures (e.g., jurisdictional boundaries, Important Farmlands, general plan land use designations, zoning designations, etc.) showing the revised linear route alignments. This information is needed for staff to accurately describe the land use setting through which these lines traverse.

---

From: Felicia Miller [mailto:Fmiller@energy.state.ca.us]  
Sent: Monday, May 11, 2009 10:22 AM  
To: Head, Sara; Tony Penna  
Cc: Caryn Holmes; MICHAEL.CARROLL@LW.com  
Subject: Palmdale Hybrid - Land Use

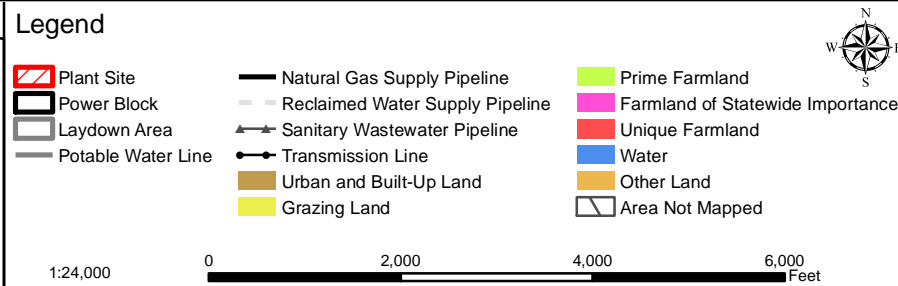
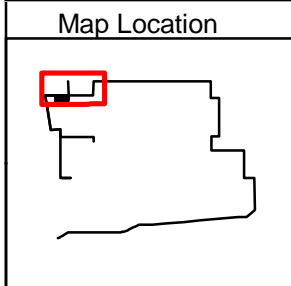
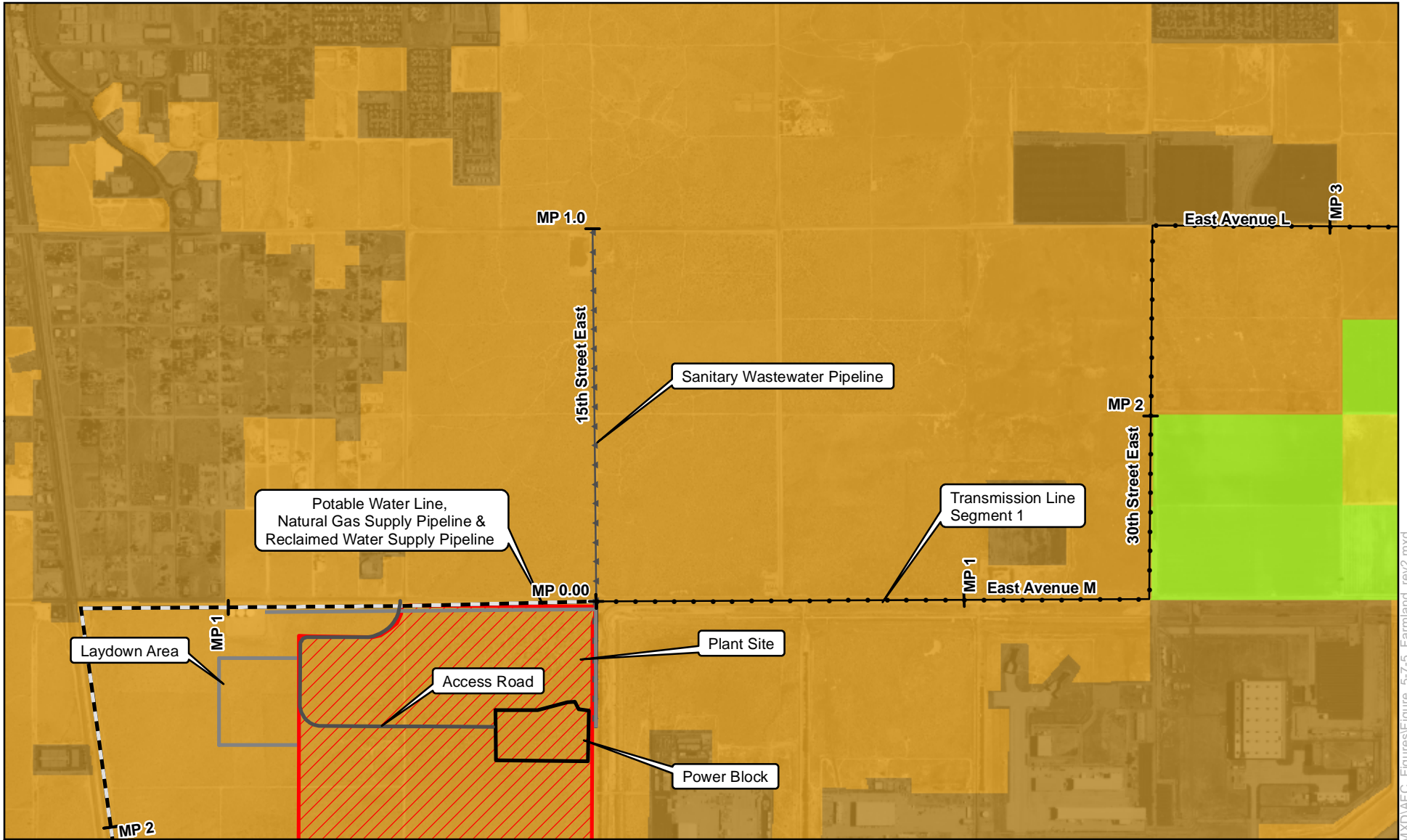
Hi Sara,

I asked staff to specify any deficiencies in the data responses, and received a comment regarding the Land Use response. Please let me know if your staff can respond to this request, and an estimate of when your staff will respond.

Thanks, Felicia

Following is the request, consistent with the level of detail we've asked for before for land use-related maps:

- Although the revised map figures (specifically, 5.7-2a and 2c, 5.7-3a and 3c, and 5.7-5) that have been provided in response to Data Request No. 142 illustrate the location of the linear facilities with respect to General Plan Land Use Designations, Zoning and Important Farmlands, the scale (e.g., 1 inch = 2.5 miles) of these figures makes it difficult to discern affected designated lands, and the revised routes. For the portions of the linear facilities where the routes have been revised, please provide the figures at an easily legible scale (e.g., 1 inch = ½ mile).



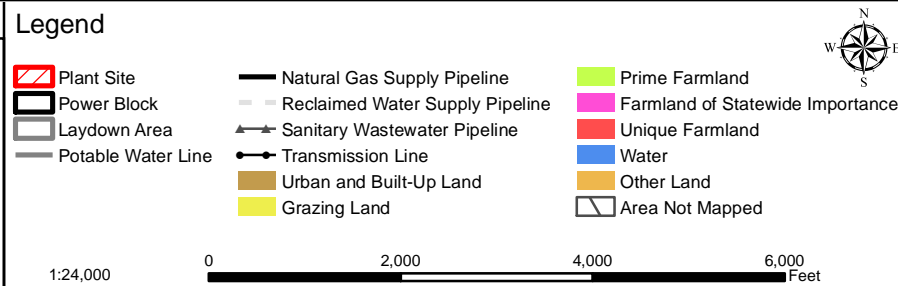
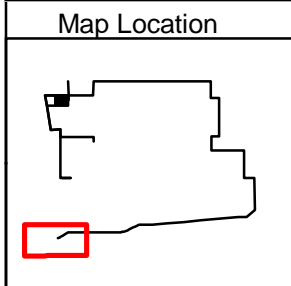
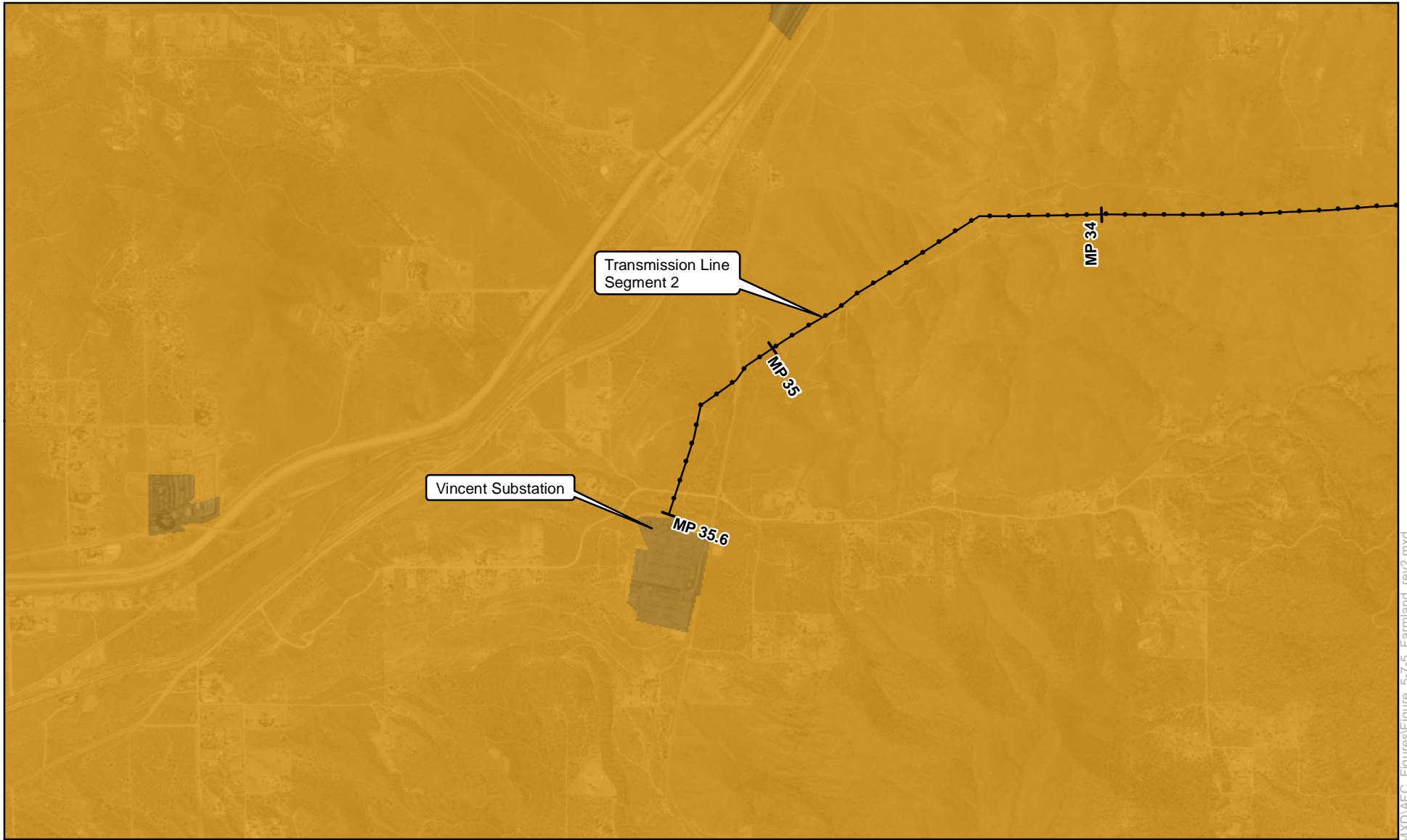
**Palmdale Hybrid Power Project**

**Figure 5.7-5**  
**Important Farmland in the Vicinity of the Project and Linear Facilities**

**Mapsheets 01 of 14**

Project: 10855-002  
 Date: December 2008

Y:\Projects\InlandEnergy\Palmdale\MXD\AFC\_Figures\Figure\_5-7-5\_Farmland\_rev2.mxd



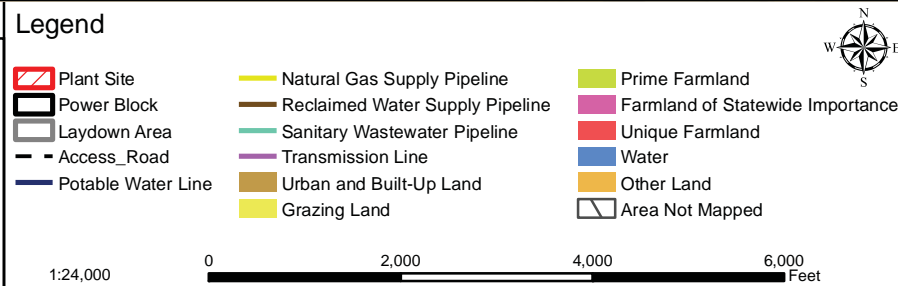
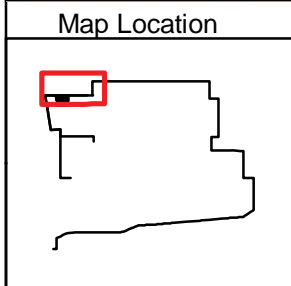
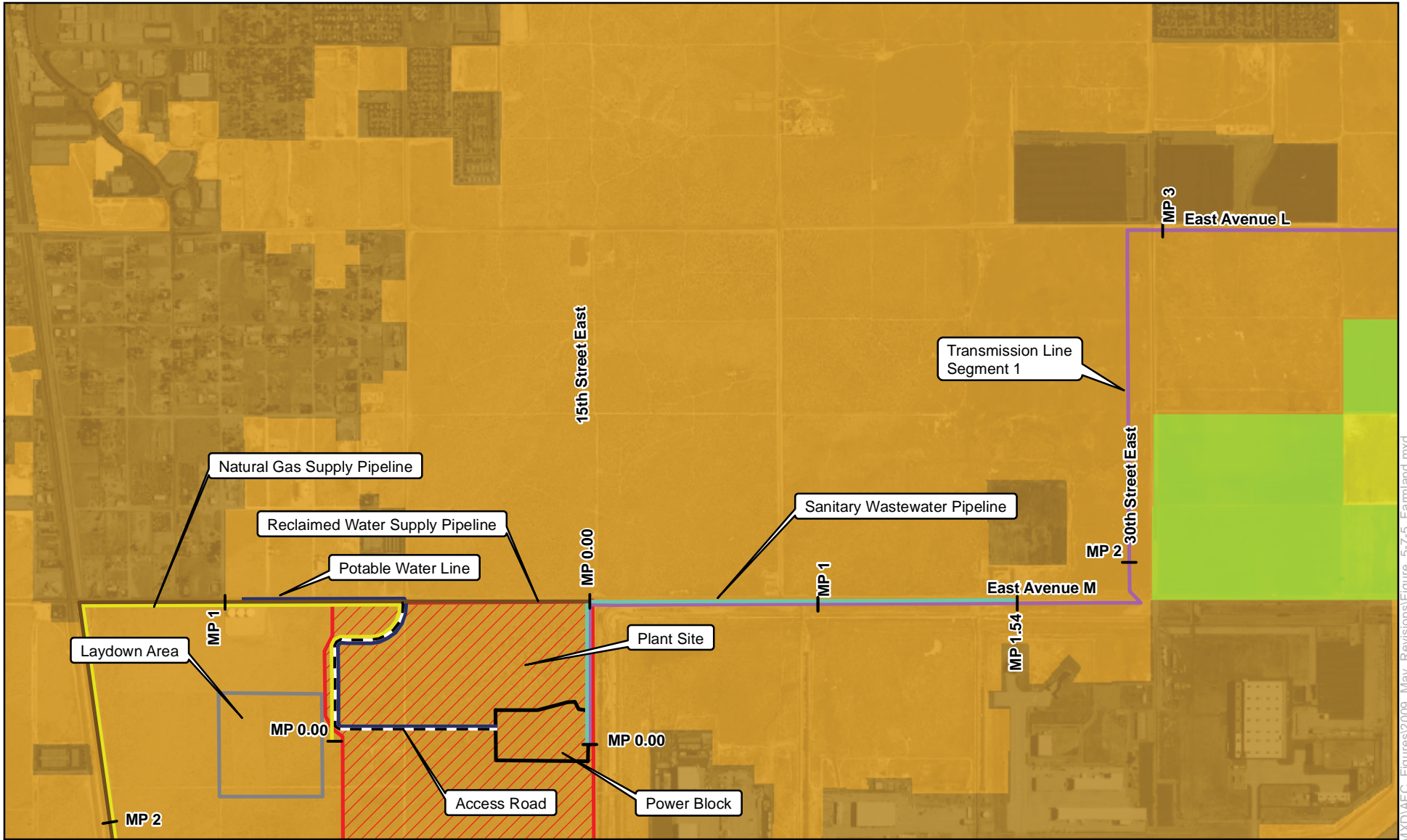
**Palmdale Hybrid Power Project**

**Figure 5.7-5**  
**Important Farmland in**  
**the Vicinity of the Project**  
**and Linear Facilities**

**Mapsheet 11 of 14**

Project: 10855-002  
 Date: December 2008

Y:\Projects\InlandEnergy\Palmdale\MXDAFC\_Figures\Figure\_5-7-5\_Farmland\_rev2.mxd



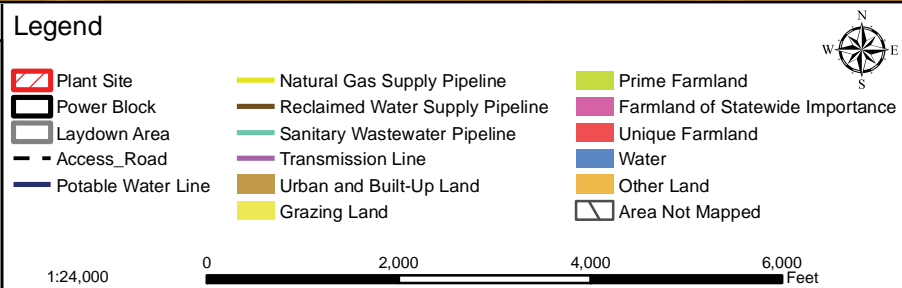
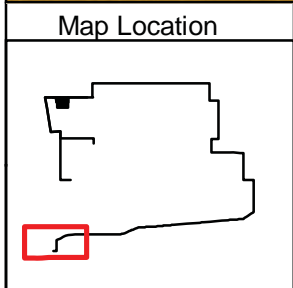
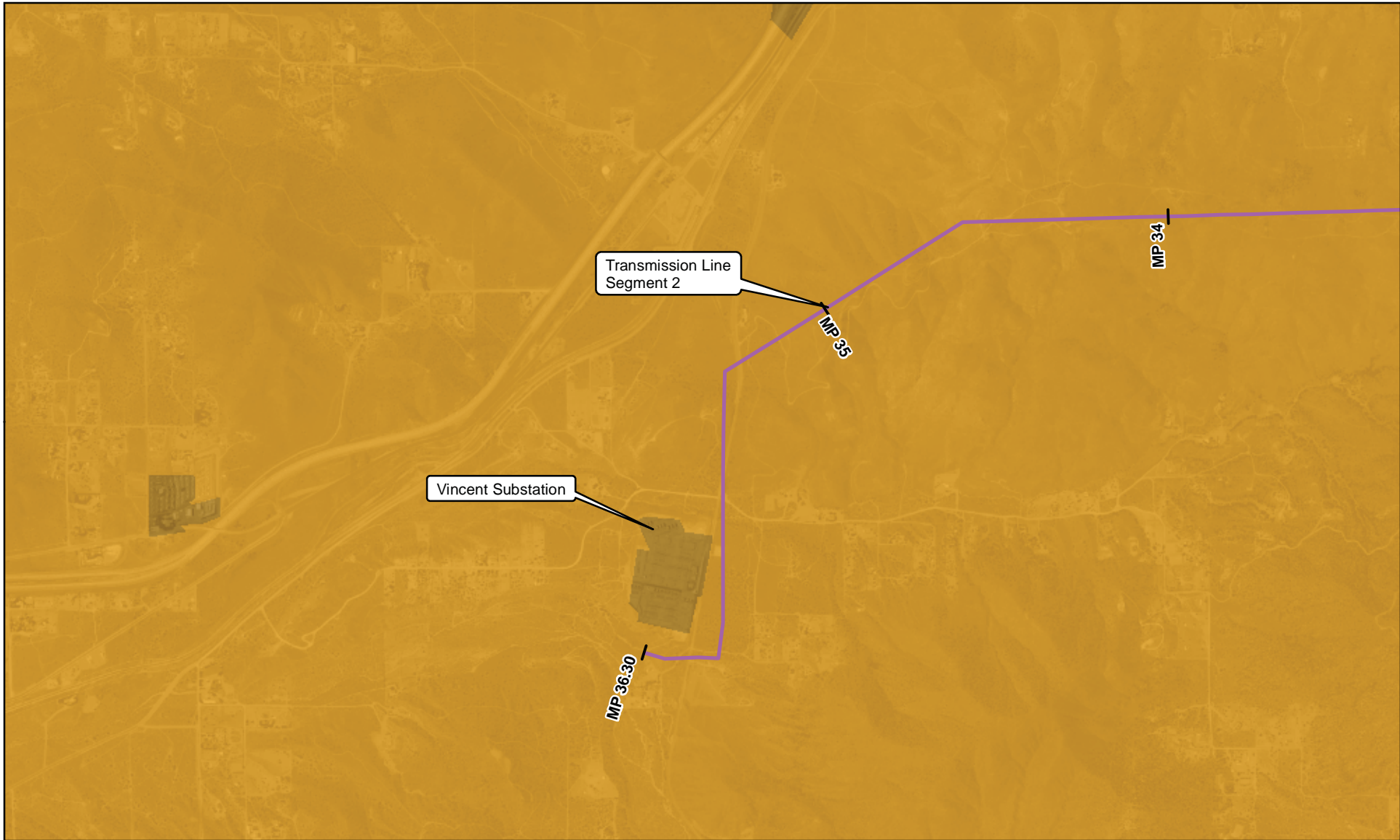
**Palmdale Hybrid Power Project**

**Figure 5.7-5**  
**Important Farmland in the Vicinity of the Project and Linear Facilities**

**Mapsheets 01 of 14**

Project: 10855-002  
 Date: May 2009

Y:\Projects\InlandEnergy\Palmdale\MD\AFC\_Figures\2009\_May\_Revisions\Figure\_5-7-5\_Farmland.mxd



**Palmdale Hybrid Power Project**

**Figure 5.7-5**  
**Important Farmland in**  
**the Vicinity of the Project**  
**and Linear Facilities**

**Mapsheet 11 of 14**

Project: 10855-002  
 Date: May 2009