



**GWF ENERGY, LLC**

<b>DOCKET</b>	
<b>08-AFC-7</b>	
DATE	JUL 23 2009
RECD	JUL 23 2009

July 23, 2009

Alan Solomon  
Project Manager  
California Energy Commission  
1516 Ninth Street  
Sacramento, CA 95814-5512

Subject: Preliminary Staff Assessment Workshop Response to Public Comments and Tracy Hill's Filing  
GWF Tracy Combined Cycle Power Plant Project (08-AFC-7)

During the June 23, 2009 GWF Tracy Combined Cycle Power Plant Project Preliminary Staff Assessment (PSA) workshop, a member of the public voiced concerns with the projects visual and noise impacts on their homes. In addition, Tracy Hills, LLC, docketed a similar visual resources concern on July 3, 2009 (Docket Log # 52303) regarding cumulative visual impacts on the approved single-family residential development. In response to these comments, GWF Energy LLC, has prepared three additional view points from the homes in question. Figure PSA Workshop Residential View Points shows the location of these additional view points, the closest being approximately  $\frac{3}{4}$  of a mile from GWF Tracy. Figures PSA Workshop View Point 1a through 1c show the existing view, simulated view of the project after construction, and a simulated view at 20 years after planned landscaping has matured from View Point 1 (from Figure PSA Workshop Residential View Points). Likewise, Figures PSA Workshop View Point 2a through 2c and PSA Workshop View Point 3a through 3c show the same representations from view points 2 and 3. As shown from these figures, the expected visual impacts at these homes are not expected to be significant.

In the Tracy Hills filing, they have expressed a desire include alternative visual screening along the Delta Mendota Canal as a way to mitigate visual impact on Tracy Hills. Tracy Hills has also offered to work with the Commission and GWF Energy LLC to explore possible mitigation measures. GWF Energy LLC looks forward to working with Tracy Hills to resolve the concerns raised.

Mr. Alan Solomon

Page 2

July 23, 2009

To respond to the noise impact concerns raised, GWF Energy LLC prepared Figure PSA Workshop Expected Noise Levels. This figure shows that expected noise levels for the project area. The noise levels at the homes concerning the public during the PSA workshop is expected to be below 34 decibels (dbA).

Please call me if you have any questions.

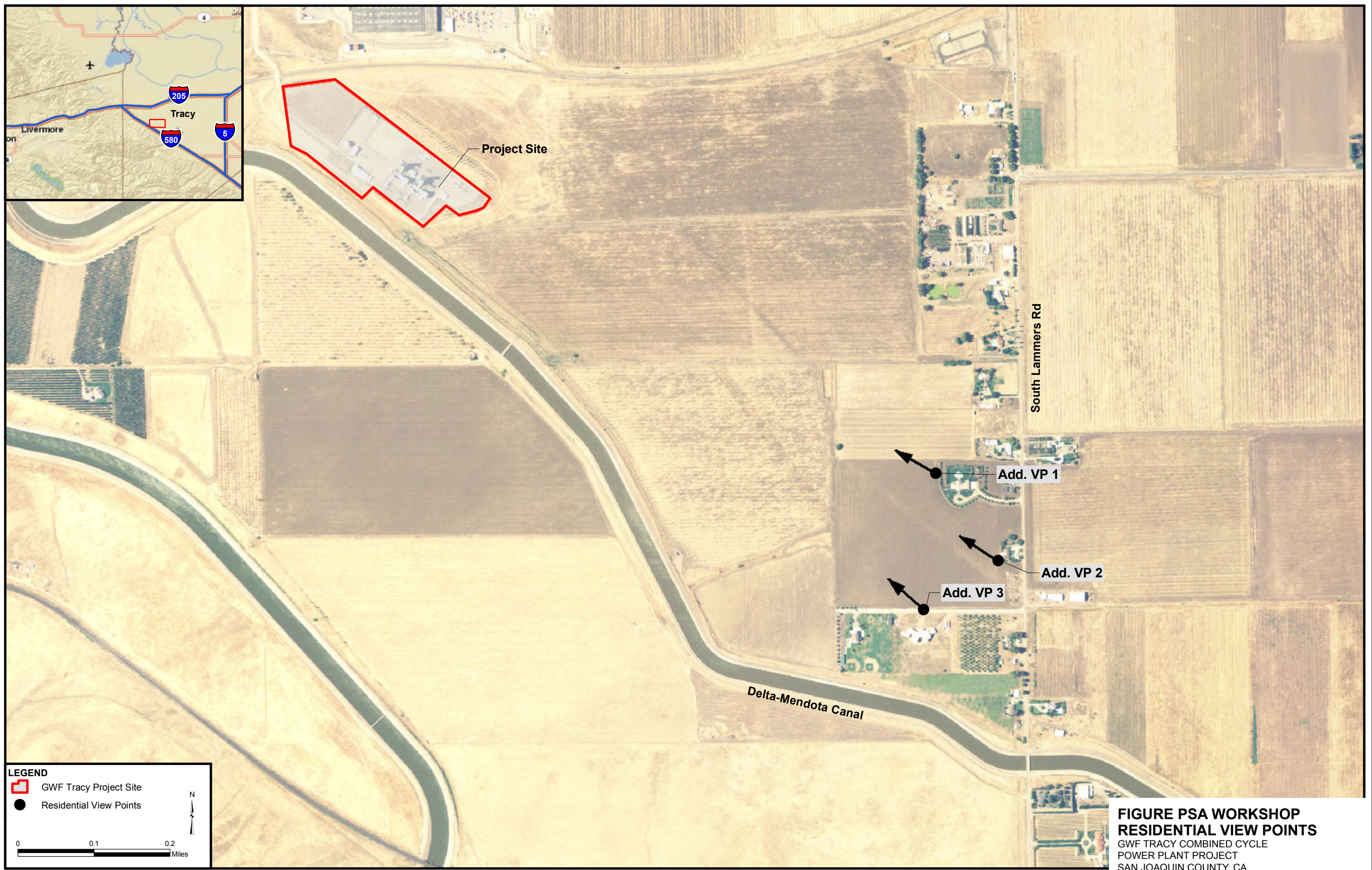
Sincerely,

A handwritten signature in black ink that reads "Jerry Salamy". The signature is written in a cursive style with a long, sweeping tail on the "y".

Jerry Salamy for:

Doug Wheeler  
Vice President, Project Development  
GWF Energy LLC

cc: Proof of Service List



**FIGURE PSA WORKSHOP  
RESIDENTIAL VIEW POINTS**  
GWF TRACY COMBINED CYCLE  
POWER PLANT PROJECT  
SAN JOAQUIN COUNTY, CA



**FIGURE PSA WORKSHOP  
VIEW POINT 1a EXISTING VIEW**  
GWF TRACY COMBINED CYCLE  
POWER PLANT PROJECT  
SAN JOAQUIN COUNTY, CA



**FIGURE PSA WORKSHOP  
VIEW POINT 1b SIMULATED VIEW**  
GWF TRACY COMBINED CYCLE  
POWER PLANT PROJECT  
SAN JOAQUIN COUNTY, CA



**FIGURE PSA WORKSHOP**  
**VIEW POINT 1c SIMULATED VIEW AT 20 YEARS**  
GWF TRACY COMBINED CYCLE  
POWER PLANT PROJECT  
SAN JOAQUIN COUNTY, CA



**FIGURE PSA WORKSHOP  
VIEW POINT 2a EXISTING VIEW**  
GWF TRACY COMBINED CYCLE  
POWER PLANT PROJECT  
SAN JOAQUIN COUNTY, CA



**FIGURE PSA WORKSHOP  
VIEW POINT 2b SIMULATED VIEW**  
GWF TRACY COMBINED CYCLE  
POWER PLANT PROJECT  
SAN JOAQUIN COUNTY, CA





**FIGURE PSA WORKSHOP**  
**VIEW POINT 2c SIMULATED VIEW AT 20 YEARS**  
GWF TRACY COMBINED CYCLE  
POWER PLANT PROJECT  
SAN JOAQUIN COUNTY, CA



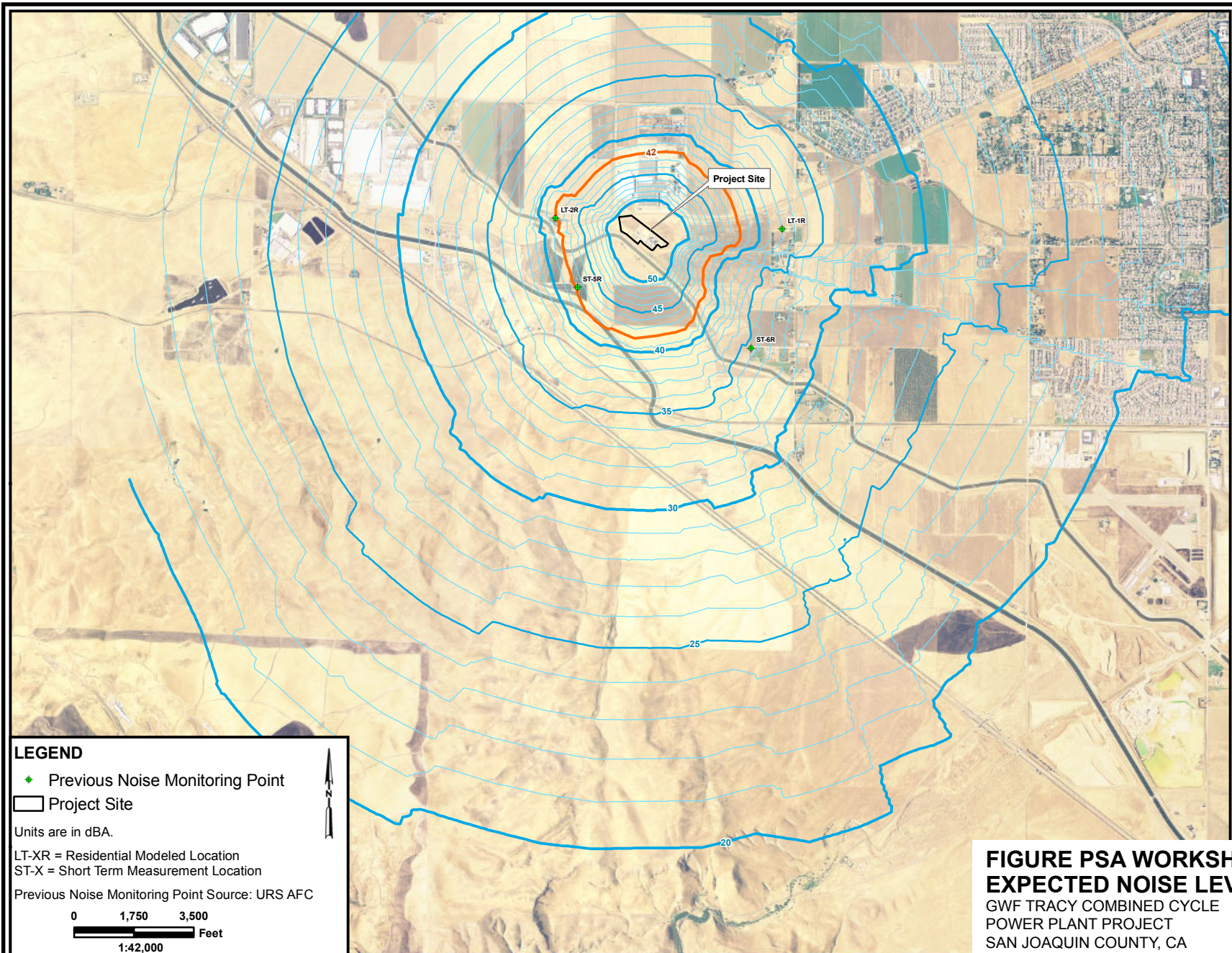
**FIGURE PSA WORKSHOP  
VIEW POINT 3a EXISTING VIEW**  
GWF TRACY COMBINED CYCLE  
POWER PLANT PROJECT  
SAN JOAQUIN COUNTY, CA



**FIGURE PSA WORKSHOP  
VIEW POINT 3b SIMULATED VIEW**  
GWF TRACY COMBINED CYCLE  
POWER PLANT PROJECT  
SAN JOAQUIN COUNTY, CA



**FIGURE PSA WORKSHOP**  
**VIEW POINT 3c SIMULATED VIEW AT 20 YEARS**  
GWF TRACY COMBINED CYCLE  
POWER PLANT PROJECT  
SAN JOAQUIN COUNTY, CA



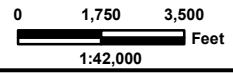
**LEGEND**

- ◆ Previous Noise Monitoring Point
- ▭ Project Site

Units are in dBA.

LT-XR = Residential Modeled Location  
 ST-X = Short Term Measurement Location

Previous Noise Monitoring Point Source: URS AFC



**FIGURE PSA WORKSHOP  
 EXPECTED NOISE LEVELS**  
 GWF TRACY COMBINED CYCLE  
 POWER PLANT PROJECT  
 SAN JOAQUIN COUNTY, CA



**BEFORE THE ENERGY RESOURCES CONSERVATION AND DEVELOPMENT  
COMMISSION OF THE STATE OF CALIFORNIA  
1516 NINTH STREET, SACRAMENTO, CA 95814  
1-800-822-6228 – [WWW.ENERGY.CA.GOV](http://WWW.ENERGY.CA.GOV)**

**APPLICATION FOR CERTIFICATION  
FOR THE *GWF TRACY COMBINED CYCLE  
POWER PLANT PROJECT***

**Docket No. 08-AFC-7  
PROOF OF SERVICE**

**(Revised 2/25/2009)**

**APPLICANT**

Doug Wheeler, Vice President  
GWF Energy, LLC  
4300 Railroad Avenue  
Pittsburg, CA 94565  
[dwheeler@gwfpower.com](mailto:dwheeler@gwfpower.com)

**APPLICANT'S CONSULTANTS**

Jerry Salamy, Consultant  
Senior Project Manager, CH2M HILL  
2485 Natomas Park Drive  
Sacramento, CA 95833  
[Jerry.Salamy@CH2M.com](mailto:Jerry.Salamy@CH2M.com)

David A. Stein, P.E.  
Vice President, Industrial Systems  
CH2M HILL  
155 Grand Avenue, Suite 1000  
Oakland, CA 94512  
[dstein@ch2m.com](mailto:dstein@ch2m.com)

**COUNSEL FOR APPLICANT**

Michael J. Carroll  
Latham & Watkins, LLP  
650 Town Center Drive, 20th Floor  
Costa Mesa, CA 92626-1925  
[michael.carroll@lw.com](mailto:michael.carroll@lw.com)

**INTERESTED AGENCIES**

California ISO  
[e-recipient@caiso.com](mailto:e-recipient@caiso.com)

**INTERVENORS**

Howard Seligman, Esq.  
Seligman & Willett, Inc  
7540 Shoreline Drive  
Stockton, CA 95219  
[hselitenni@aol.com](mailto:hselitenni@aol.com)

Mr. Robert Sarvey  
501 W. Grantline Road  
Tracy, California 95376  
[sarveybob@aol.com](mailto:sarveybob@aol.com)

**ENERGY COMMISSION**

\*KAREN DOUGLAS  
Chair and Presiding Member  
[kldougla@energy.state.ca.us](mailto:kldougla@energy.state.ca.us)

ARTHUR H. ROSENFELD  
Commissioner and Associate Member  
[arosenfe@energy.state.ca.us](mailto:arosenfe@energy.state.ca.us)

Raoul Renaud  
Hearing Officer  
[rrenaud@energy.state.ca.us](mailto:rrenaud@energy.state.ca.us)

\*Alan Solomon  
Project Manager  
[asolomon@energy.state.ca.us](mailto:asolomon@energy.state.ca.us)

Kerry Willis  
Staff Counsel  
[kwillis@energy.state.ca.us](mailto:kwillis@energy.state.ca.us)

Elena Miller  
Public Adviser's Office  
[publicadviser@energy.state.ca.us](mailto:publicadviser@energy.state.ca.us)

**DECLARATION OF SERVICE**

I, Mary Finn, declare that on July 23, 2009, I served and filed copies of the attached PSA Workshop Figures. The original document, filed with the Docket Unit, is accompanied by a copy of the most recent Proof of Service list, located on the web page for this project at:

**[<http://www.energy.ca.gov/sitingcases/tracyexpansion/index.html>]**. The document has been sent to both the other parties in this proceeding (as shown on the Proof of Service list) and to the Commission's Docket Unit, in the following manner:

***(Check all that Apply)***

**For service to all other parties:**

sent electronically to all email addresses on the Proof of Service list;

by personal delivery or by depositing in the United States mail at Sacramento, California with first-class postage thereon fully prepaid and addressed as provided on the Proof of Service list above to those addresses **NOT** marked "email preferred."

**AND**

**For filing with the Energy Commission:**

sending an original paper copy and one electronic copy, mailed and emailed respectively, to the address below (preferred method);

**OR**


depositing in the mail an original and 12 paper copies, as follows:

**CALIFORNIA ENERGY COMMISSION**

Attn: Docket No. 08-AFC-7  
1516 Ninth Street, MS-4  
Sacramento, CA 95814-5512

[docket@energy.state.ca.us](mailto:docket@energy.state.ca.us)

I declare under penalty of perjury that the foregoing is true and correct.



\_\_\_\_\_  
**Mary Finn**