



CH2MHILL

CH2M HILL
2485 Natomas Park
Drive
Suite 600
Sacramento, CA 95833-2937
Tel 916.920.0300
Fax 916.920.8463

January 23, 2009

Alan Solomon
Project Manager
California Energy Commission
1516 Ninth Street
Sacramento, CA 95814-5512

DOCKET 08-AFC-7	
DATE	<u>JAN 23 2009</u>
RECD.	<u>JAN 23 2009</u>

Subject: Workshop Data Responses Set 1
GWF Tracy Combined Cycle Power Plant Project (08-AFC-7)

On behalf of the GWF Energy LLC., please find attached 12 copies and one original of the Workshop Data Responses Set 1, in response to Staff's Data Requests during the December 11, 2008 Data Request Workshop.

Included in this submittal are five full-size drawings of the GWF Tracy Peaker Plant Landscaping Plan.

Please call me if you have any questions.

Sincerely,

CH2M HILL

Jerry Salamy
Senior Project Manager

cc: Proof of Service List



BEFORE THE ENERGY RESOURCES CONSERVATION AND DEVELOPMENT
COMMISSION OF THE STATE OF CALIFORNIA
1516 NINTH STREET, SACRAMENTO, CA 95814
1-800-822-6228 – WWW.ENERGY.CA.GOV

APPLICATION FOR CERTIFICATION
FOR THE *GWF TRACY COMBINED CYCLE*
POWER PLANT PROJECT

Docket No. 08-AFC-7
PROOF OF SERVICE
(Revised 12/10/2008)

INSTRUCTIONS: All parties shall either (1) send an original signed document plus 12 copies or (2) mail one original signed copy AND e-mail the document to the address for the Docket as shown below, AND (3) all parties shall also send a printed or electronic copy of the document, which includes a proof of service declaration to each of the individuals on the proof of service list shown below:

CALIFORNIA ENERGY COMMISSION
Attn: Docket No. 01-AFC-16
1516 Ninth Street, MS-15
Sacramento, CA 95814-5512
docket@energy.state.ca.us

APPLICANT

Doug Wheeler, Vice President
GWF Energy, LLC
4300 Railroad Avenue
Pittsburg, CA 94565
dwheeler@gwfpower.com

COUNSEL FOR APPLICANT

Michael J. Carroll
Latham & Watkins, LLP
650 Town Center Drive, 20th Floor
Costa Mesa, CA 92626-1925
michael.carroll@lw.com

APPLICANT'S CONSULTANTS

Jerry Salamy, Consultant
Senior Project Manager, CH2M HILL
2485 Natomas Park Drive
Sacramento, CA 95833
Jerry.Salamy@CH2M.com

INTERESTED AGENCIES

California ISO
e-recipient@caiso.com

David A. Stein, P.E.
Vice President, Industrial Systems
CH2M HILL
155 Grand Avenue, Suite 1000
Oakland, CA 94512
dstein@ch2m.com

INTERVENORS

Howard Seligman, Esg.
Seligman & Willett, Inc
7540 Shoreline Drive
Stockton, CA 95219
hselitenni@aol.com

***Mr. Robert Sarvey**
501 W. Grantline Road
Tracy, California 95376
sarveybob@aol.com

ENERGY COMMISSION

KAREN DOUGLAS
Commissioner and Presiding Member
KLdougl@energy.state.ca.us

ARTHUR H. ROSENFELD
Commissioner and Associate Member
arosenfe@energy.state.ca.us

Raoul Renaud
Hearing Officer
rrenaud@energy.state.ca.us

Christopher Meyer

Project Manager
cmeyer@energy.state.ca.us

Kerry Willis
Staff Counsel
kwillis@energy.state.ca.us

Elena Miller
Public Adviser's Office
publicadviser@energy.state.ca.us

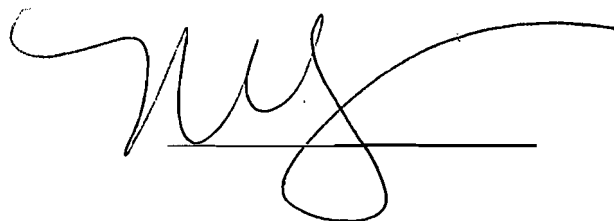
DECLARATION OF SERVICE

I, Mary Finn, declare that on January 23, 2009, I deposited copies of the attached GWF Tracy Combined Cycle Power Plant Project (08-AFC-7) Workshop Informal Data Request Set 1A in the United States mail at Sacramento with first-class postage thereon fully prepaid and addressed to those identified on the Proof of Service list above.

OR

Transmission via electronic mail was consistent with the requirements of California Code of Regulations, title 20, sections 1209, 1209.5, and 1210. All electronic copies were sent to all those identified on the Proof of Service list above.

I declare under penalty of perjury that the foregoing is true and correct.

A handwritten signature in black ink, appearing to be 'Mary Finn', written over a horizontal line.

Application for Certification

**Workshop Informal
Data Request Set 1**

**GWF Tracy Combined Cycle
Power Plant Project**

Submitted by



With Technical Assistance by

CH2MHILL

January 2009

GWF Tracy Combined Cycle Power Plant Project

(08-AFC-7)

Workshop Informal Data Request

Submitted to
California Energy Commission

Submitted by
GWF Energy, LLC

January 2009

With Assistance from

CH2MHILL

2485 Natomas Park Drive
Suite 600
Sacramento, CA 95833

Contents

Section	Page
Introduction.....	1
Land Use (1).....	2
Biological Resources (2-5).....	14
Cultural Resources (6).....	16

Figures

WS1-1	Transmission Line Segment 1 Reconductoring Disturbance Areas Overview
WS1-2a	Transmission Line Segment 2 Reconductoring Disturbance Areas Overview
WS1-2b	Transmission Line Segment 2 Reconductoring North Disturbance Area
WS1-2c	Transmission Line Segment 2 Reconductoring Middle Disturbance Area
WS1-2d	Transmission Line Segment 2 Reconductoring South Disturbance Area
WS1-3a	Transmission Line Segment 3 Reconductoring Disturbance Areas Overview
WS1-3b	Transmission Line Segment 3 Reconductoring South Disturbance Area
WS1-3c	Transmission Line Segment 3 Reconductoring Center Disturbance Areas
WS1-3d	Transmission Line Segment 3 Reconductoring North Disturbance Area

Attachments

WS1-1	Email from PG&E Regarding Reconductoring Pull Sites
WS3-1	Full-sized Copies of the Approved Landscaping Plan for the Tracy Peaker Plant

Introduction

Attached are GWF Energy LLC's (GWF or Applicant) responses to the California Energy Commission (CEC) staff's requests at the December 11, 2008 Data Requests Workshop. The responses are presented in the same order as the CEC staff raised the issues at the Workshop and are numbered 1 through 6. New or revised graphics or tables are numbered in reference to the Workshop Data Request number. For example, the first table used in response to Workshop Data Request 1 would be numbered Table WS1-1 and the first figure would be Figure WS1-1, and so on.

Additional documents submitted in response to a data request (i.e., stand-alone documents) are found at the end of this Data Response submittal and are not sequentially page-numbered with the remainder of the document, though they may have their own internal page numbering system.

The Applicant looks forward to working cooperatively with CEC staff as GWF Tracy proceeds through the siting process. We trust that these responses address the staff's questions and remain available to have any additional dialogue the staff may require.

Land Use (1)

Data Request

1. Provide the number of acres disturbed (temporary and permanent) for the 2 transmission termination structures (for GWF Tracy interconnection), relocated onsite equipment storage area (if not included in the 3.28 acre permanent disturbance area), and the construction areas for the reconductored transmission line segments. Provide map of the expected construction areas for the transmission line reconductoring segments and confirm that there is no active agricultural production in areas.

Response: The two transmission termination structures interconnecting GWF Tracy with the existing 115-kilovolt (kV) Tesla-Schulte #2 transmission line are located on GWF property, which was included in the 34.6 acres of mitigation provided during the Tracy Peaker Project licensing proceeding. The same is true for the 3.28 acres of permanently disturbed area proposed for the relocated stormwater retention pond.

Pacific Gas and Electric Company (PG&E) estimates that a total of six reconductoring disturbance sites will be required, with each measuring approximately 100 feet by 100 feet (this communication is submitted at Attachment WS1-1). Based on PG&E's estimate, the total area of disturbance for reconductoring would be 1.37 acres. In reviewing this information, GWF was concerned that the reconductoring segments were not completely straight and was concerned that the estimate of six pull sites may be an underestimate. Therefore, GWF has prepared Figures WS1-1 through WS1-3 showing what it believes is the maximum expected number and approximate location of the reconductoring construction areas. The total number of reconductoring sites is 11, with a total area of disturbance of approximately 110,000 square feet or 2.53 acres. As noted on Figure WS-2D, the GWF reconductoring construction site may impact existing agricultural operations.

PG&E has a San Joaquin Valley Operation and Maintenance Habitat Conservation Plan (HCP) for operation and maintenance of its natural gas, electrical, and communication systems throughout the San Joaquin Valley.¹ This plan covers all aspects of PG&E's maintenance of its electrical transmission system, including reconductoring of existing transmission lines. GWF is in discussions with PG&E to determine if the reconductoring of the three transmission line segments will be performed under PG&E's existing HCP.

If the results of these discussions determine that PG&E is unable to perform the reconductoring under its HCP, GWF will request coverage under the San Joaquin Council of Governments (SJCOG) Multi-Species Habitat Conservation Plan (MSHCP). GWF Energy met with Mr. Steve Mayo and Ms. Anne-Marie Poggio-Castillou of SJCOG on January 15, 2009 to discuss the project transmission line reconductoring disturbances and to resolve any concerns Mr. Mayo presented to the CEC staff in a December 12, 2008 email. Based on the

¹ Final PG&E San Joaquin Valley Operation & Maintenance Habitat Conservation Plan
<http://www.pge-oandm-hcp.net/HCP/index.html>

discussions during this meeting, if PG&E was not able to provide coverage for the reconductoring construction, SJCOG staff indicated that GWF will need to provide a letter presenting a project description of the reconductoring construction, a map showing the areas being disturbed, and an estimate of the area impacted. The SJCOG could process a request and assess if mitigation compensation is required in a 45-day period. Based on a review of Figures WS1-1 to WS1-3, Mr. Mayo indicated that he no longer had concerns regarding riparian species (Brush Rabbit and Wood Rat) impacts.



- Approximated temporary pull site required to reconductor transmission line Segment 1

FIGURE WS1-1
TRANSMISSION LINE SEGMENT 1
RECONDUCTORING
DISTURBANCE AREAS OVERVIEW
GWF TRACY COMBINED CYCLE
POWER PLANT PROJECT
SAN JOAQUIN COUNTY, CA



- Approximated temporary pull site required to reconductor transmission line Segment 2

FIGURE WS1-2A
TRANSMISSION LINE SEGMENT 2
RECONDUCTORING
DISTURBANCE AREAS OVERVIEW
GWf TRACY COMBINED CYCLE
POWER PLANT PROJECT
SAN JOAQUIN COUNTY, CA

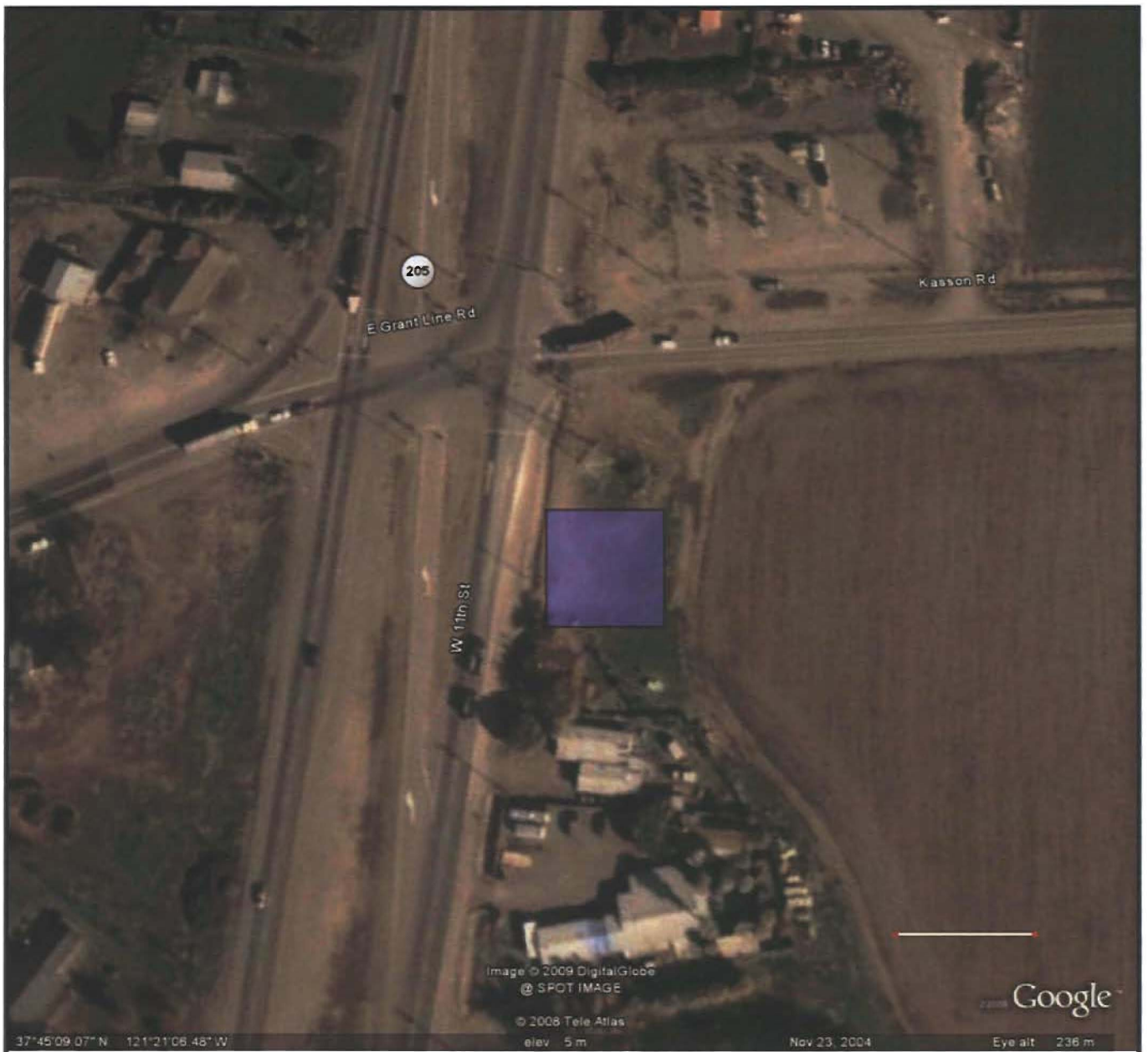


FIGURE WS1-2B
TRANSMISSION LINE SEGMENT 2
RECONDUCTORING NORTH
DISTURBANCE AREA
GWF TRACY COMBINED CYCLE
POWER PLANT PROJECT
SAN JOAQUIN COUNTY, CA



FIGURE WS1-2C
TRANSMISSION LINE SEGMENT 2
RECONDUCTORING MIDDLE
DISTURBANCE AREAS
GWF TRACY COMBINED CYCLE
POWER PLANT PROJECT
SAN JOAQUIN COUNTY, CA

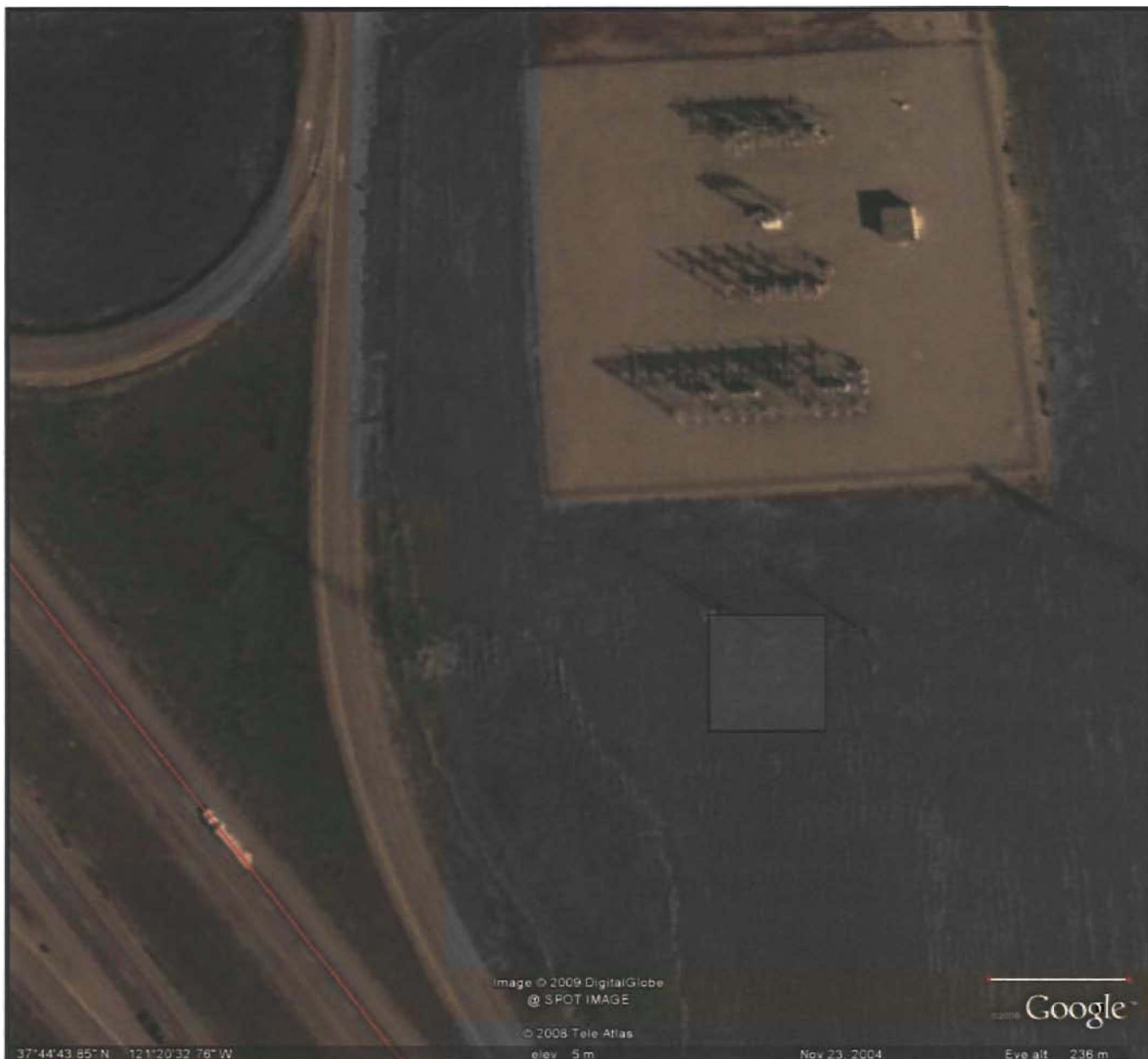
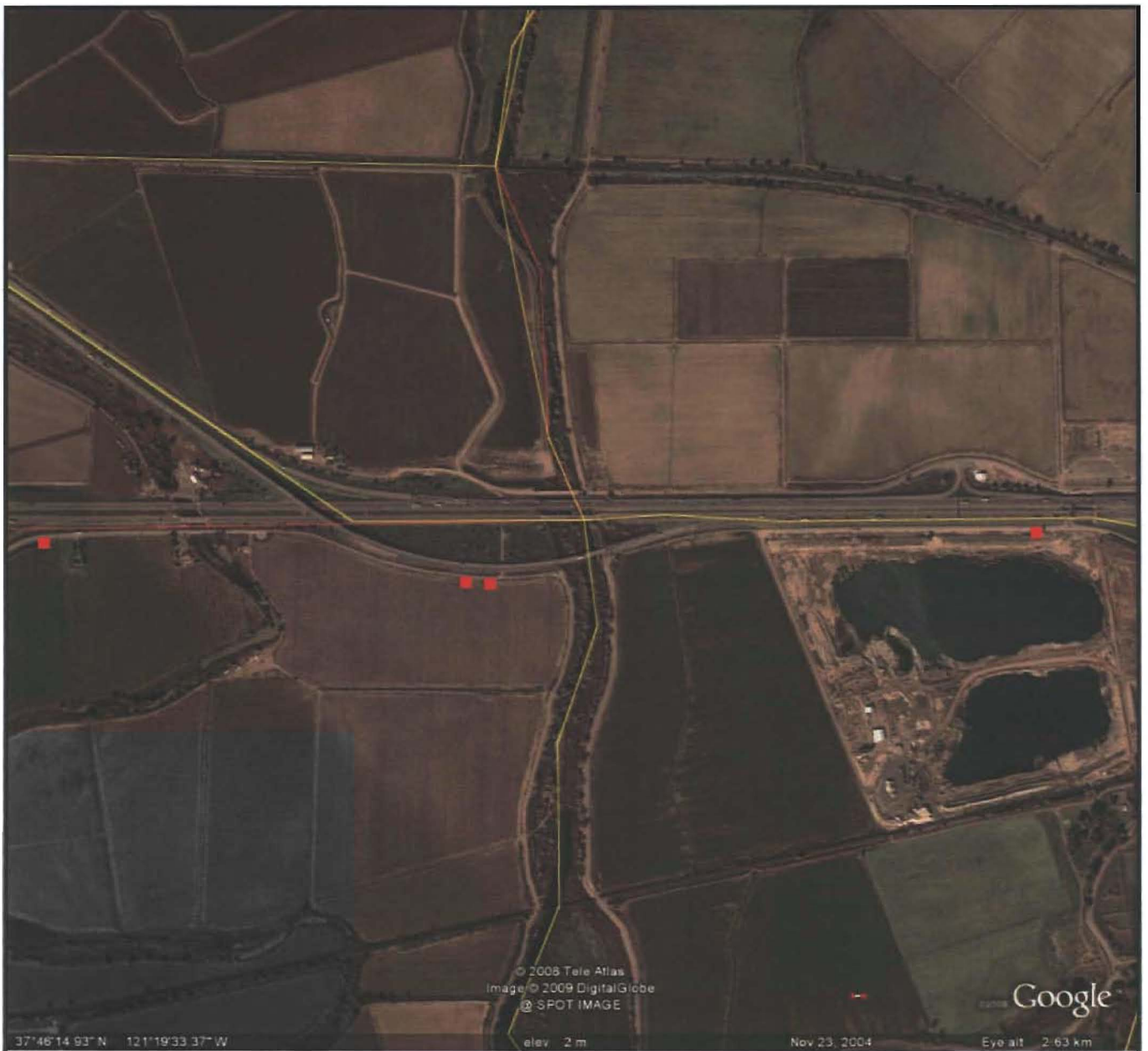


FIGURE WS1-2D
TRANSMISSION LINE SEGMENT 2
RECONDUCTORING SOUTH
DISTURBANCE AREA
GWF TRACY COMBINED CYCLE
POWER PLANT PROJECT
SAN JOAQUIN COUNTY, CA



- Approximated temporary pull site required to reconductor transmission line Segment 3

FIGURE WS1-3A
TRANSMISSION LINE SEGMENT 3
RECONDUCTORING
DISTURBANCE AREAS OVERVIEW
GWF TRACY COMBINED CYCLE
POWER PLANT PROJECT
SAN JOAQUIN COUNTY, CA

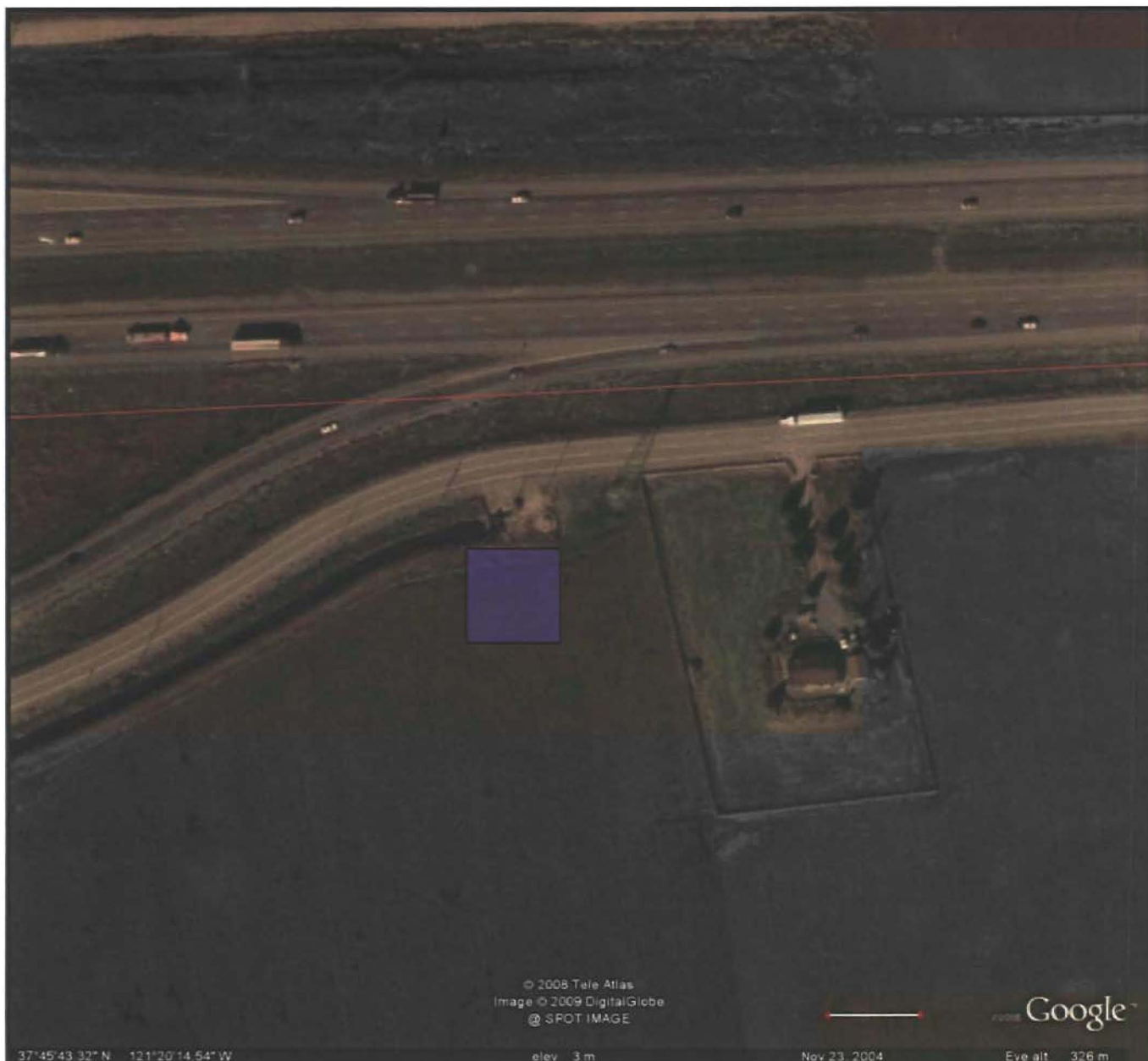


FIGURE WS1-3B
TRANSMISSION LINE SEGMENT 3
RECONDUCTORING SOUTH
DISTURBANCE AREA
GWF TRACY COMBINED CYCLE
POWER PLANT PROJECT
SAN JOAQUIN COUNTY, CA



37°46'06.43" N 121°19'38.27" W elev 4m Nov 23, 2004 Eye alt 291m

FIGURE WS1-3C
TRANSMISSION LINE SEGMENT 3
RECONDUCTING CENTER
DISTURBANCE AREAS
GWF TRACY COMBINED CYCLE
POWER PLANT PROJECT
SAN JOAQUIN COUNTY, CA



© 2008 Tele Atlas
Image © 2009 DigitalGlobe
© SPOT IMAGE

Google

37°49'41.86" N 121°18'58.51" W

elev 3 m

Nov 23, 2004

Eye alt 291 m

FIGURE WS1-3D
TRANSMISSION LINE SEGMENT 3
RECONDUCTING NORTH
DISTURBANCE AREA
GWF TRACY COMBINED CYCLE
POWER PLANT PROJECT
SAN JOAQUIN COUNTY, CA

Cultural Resources (6)

Background

During last the December 11th GWF Tracy Workshop, CEC staff requested copies of three confidential cultural resource documents (CCIC #716 and 4216 and the JRP Stanislaus Historical Assessment).

Data Request

6. Provide copies of confidential cultural resource documents (CCIC #716 and 4216 and the JRP Stanislaus Historical Assessment).

Response: The Commission staff requested GWF provide copies of a confidential cultural resource reports CCIC #716, 4216, and the JRP Stanislaus Historical Assessment. These reports were filed under a request for confidential treatment as part of GWF's Data Adequacy Response on September 15, 2008 (Docket Log # 48040).

ATTACHMENT WS1-1

**Email from PG&E Regarding
Reconductoring Pull Sites**

Email from PG&E and GWF Regarding Transmission Line Reconductoring.txt

From: Moore, Hal [hmoore@gwfpower.com]
Sent: Thursday, December 11, 2008 9:56 AM
To: Wheeler, Doug; Kehoe, Mark; Lai, Peter; Stein, David/BAO; Salmay, Jerry/SAC; MICHAEL.CARROLL@LW.com
Subject: FW: Transmission Line Reconductoring

Follow Up Flag: Follow up
Flag Status: Red

To All: I just received this response to the biology question on the reconductoring impacts.

I think we can legitimately tell people that these are all single pull reconductors due to their length and the straightness of the runs. Also there are no significant elevation changes.

We can use their estimate for pull space of 100ft by 100ft on each end of the pull.

Please let me know if there are questions or comments on this.

Thanks

Hal Moore
GWF Power Systems / Energy LLC
925-431-1447

-----Original Message-----

From: Grosse, Karen R (ET) [mailto:KRG6@pge.com]
Sent: Thursday, December 11, 2008 9:46 AM
To: Moore, Hal
Cc: Vardanian, John (ET)
Subject: Transmission Line Reconductoring

Hal:

I spoke with one of our more experienced project managers. He says that we generally like to pull from double dead end to double dead end but that there are a lot of factors that can influence how long a pull we do. The range is from a couple of spans to 3 miles. Of course we cannot do 3 miles all the time so someone would have to look at the particular lines for your project to see what is achievable.

The space required for a pull site is 100 feet by 100 feet plus some distance back from the line so that you are not pulling straight up.

I hope this gives you the information you need. If you need anything else, John Vardanian says to give him a call and he will try to hunt it down for you. John's number is 451-973-0815

Hope you have a happy holiday season.

Thank you,

Karen Grosse
Supervisor - Transmission Operations Engineering North PG&E - Engineering & Technology krg6@pge.com
(415) 973-7681 office
(415) 385-0436 cell

Biological Resources (2–5)

Background

The Tracy Peaker Plant (TPP, 01-AFC-16) mitigated for habitat compensation loss to the San Joaquin kit fox with the original project. The Application for Certification (AFC) for the GWF Tracy Combined Cycle (GWF Tracy) states that 34.6 acres of the 40-acre site were mitigated for previously through the San Joaquin County Multi-Species Habitat Conservation and Open Space Plan (SJCMSCP) (GWF Tracy AFC). United States Fish and Wildlife Service (USFWS) and San Joaquin Council of Government (SJCOG) are concerned that the reconductoring of the three transmission line segments associated with this project will affect potential habitat and sensitive species. Energy Commission staff needs more information regarding the transmission line reconductoring segments permanent and temporary impacts.

Data Request

2. Provide map showing the location of the expected construction area for the transmission line reconductoring segments and describe how construction will avoid riparian habitats (Tom Paine Slough and Paradise Cut).

Response: Please see the response to Workshop Data Request #1 above.

Background

The California Energy Commission staff and Mr. Gerald Park of SJCOG were sent a letter on January 8, 2002 regarding the siting of the TPP and proposed landscaping plans from Cay C. Gould of the USFWS. In this letter obtained through the State Archives on the TPP project, staff has been informed that the original TPP project was to have a 300-foot setback from the Delta Mendota Canal with a minimum of 100 feet of the setback to be entirely on TPP property. This setback was required by USFWS for protection of the state threatened and federally endangered San Joaquin kit fox migration corridors of the Delta Mendota Canal and the railroad. Staff used the map program Google Earth to calculate the distance from the fence line of the existing TPP and the top edge of the canal. This distance was approximately 200 feet, which is less than what was required by USFWS for the TPP. It is unclear to USFWS and Energy Commission staff as to if the setback and landscaping concerns were properly implemented according to the January 8, 2002 letter.

Data Request

3. Please provide a detailed description regarding the setback from the Delta Mendota Canal. In this description, include the distance in feet from the Canal to any project features such as landscaping and fencing.

Response: Five full-sized copies of the approved landscaping plan for the Tracy Peaker Plant are provided with this submittal; additional copies will be provided on request. This landscaping plan was approved during an amendment to the Commission license. As shown on these figures, GWF was not able to accommodate a 300-foot setback along the Delta Mendota Canal due to physical site constraints of the project.

Data Request

4. Please provide a detailed description on landscaping plans including species planted and the status of these plants currently.

Response: The Tracy Peaker Plant landscaping plan identified several species of trees and shrubs to be planted in various areas of the property owned and controlled by GWF Energy LLC. In accordance with the landscaping plan submitted to and approved by the California Energy Commission in 2003.

The following plant list was installed at the general locations shown on the landscaping plan drawing:

- *Cercis occidentalis* – Western Redbud
- *Casuarina cunninghamiana* – River She-Oak
- *Populus Nigra* ‘Italica’ – Lombardy Poplar
- *Aesculus californica* – California Buckeye
- *Sambucus Mexicana* – Blue Elderberry
- *Ribes aureum* – Golden Currant

During the years 2004 to 2006, the landscaping survival rate was approximately 60 percent due primarily to an infestation of voles and rodents that fed on the various trees and shrubs. GWF had to replace approximately 60 trees and 40 shrubs during this period. Subsequently, GWF has taken steps to control the rodents, improve the watering system, and create barriers that have substantially improved the survival rate.

The current landscape contractor has noted that of the various species planted including the California Buckeye, the Western Redbud and the Golden Currant have all had problems surviving at the Tracy Peaker site environment. There appears to be a loss of approximately 15 percent of the shrubs in 2008. These are scheduled to be replaced in the spring of 2009 but GWF is currently investigating alternatives that would be better suited to the area. GWF will request approval from the CEC compliance staff regarding any recommended changes to the vegetation prior to replacing any shrubs or trees.

Data Request

5. Provide copy of communication from Andrea Bortien of the California Department of Fish and Game (CDFG).

Response: GWF has attempted to contact the CDFG Western San Joaquin County representative, Andrea Bortien, without success. GWF will continue to contact the CDFG and will provide the Commission staff with any information received.

OVERSIZE DOCUMENT

- Too Large to Scan
- No Digital Version Available
- The complete document can be found in the Dockets Unit.