

DOCKET

08-AFC-7

DATE _____

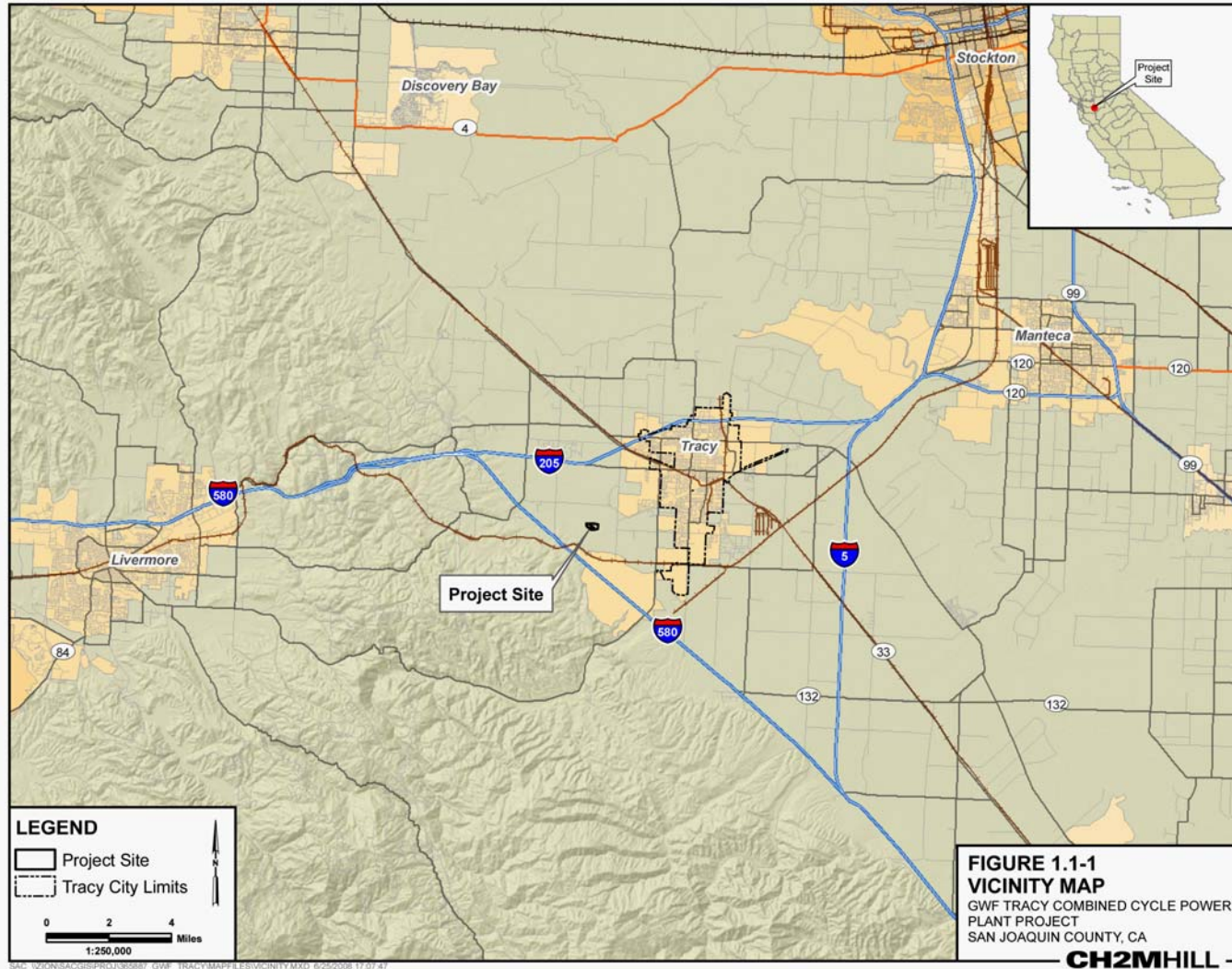
RECD. OCT 28 2008

GWF Tracy

Combined Cycle Power Plant
Project - 08-AFC-7

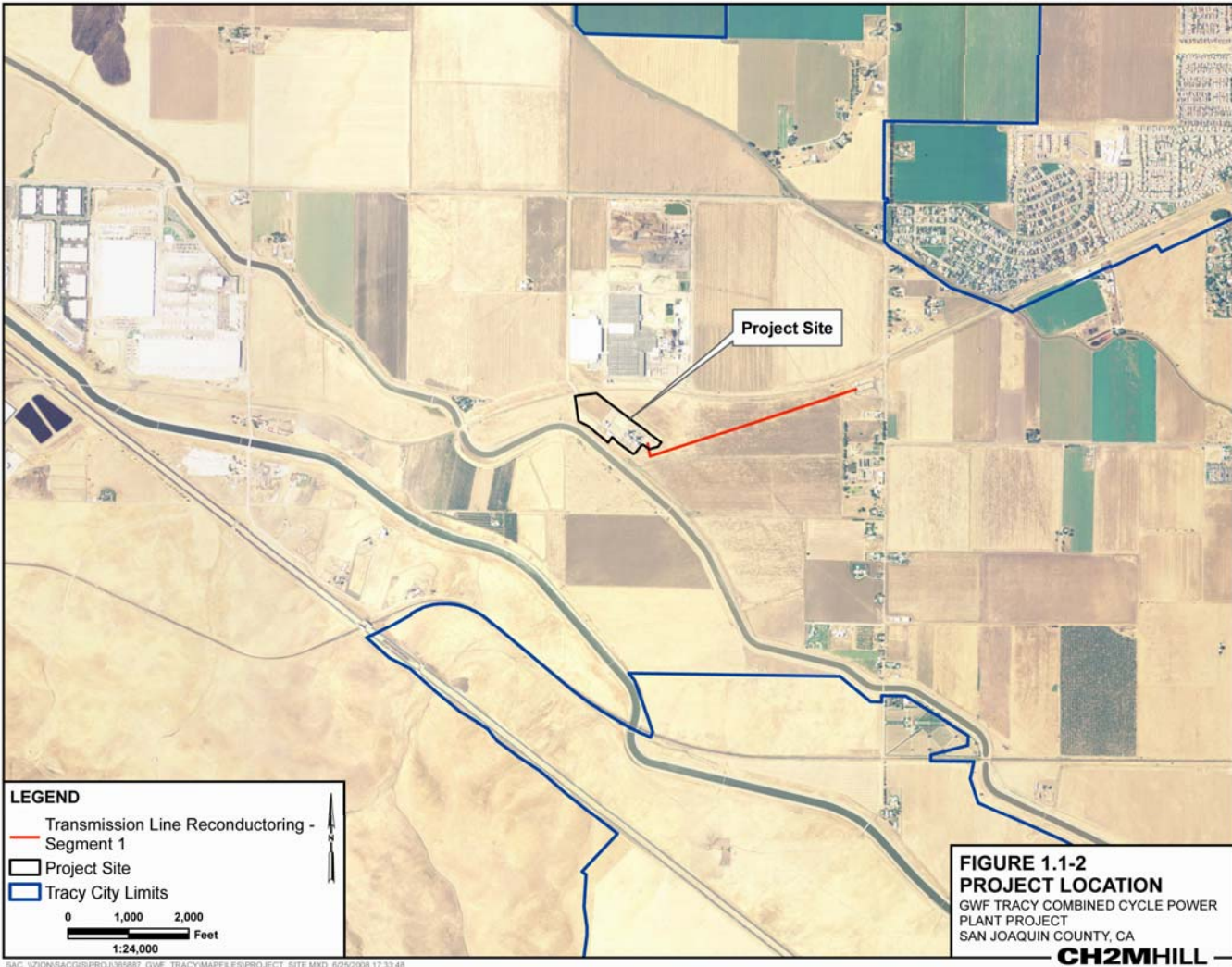
GWF®

Project Location



\\S:\GIS\GIS\PROJECTS\PRJ\1305887_GWF_TRACY\MAPFILES\VICINITY.MXD 6/25/2008 11:07:47

Vicinity Map



SAC:\2101NSACGIS\PROJ\365887_GWF_TRACY\MAPPFILES\PROJECT_SITE.MXD 6/29/2008 17:33:48



Existing GWF Tracy Peaker Plant

- Simple Cycle
- Two Combustion Gas Turbines – 170MWs
- Operational in May 2003
- 10-year Power Purchase Agreement
- Community benefits - \$1.3 million for Environmental Benefits and Charitable Giving

Tracy Peaker Plant





Combined Cycle Conversion Benefits

- Additional MW to Meet Growing Demand
- Increase Efficiency
- Use of Existing Infrastructure Minimizes Impacts
- Lower Emissions Per MW
- 8000 hours/yr of Availability



Key Project Features

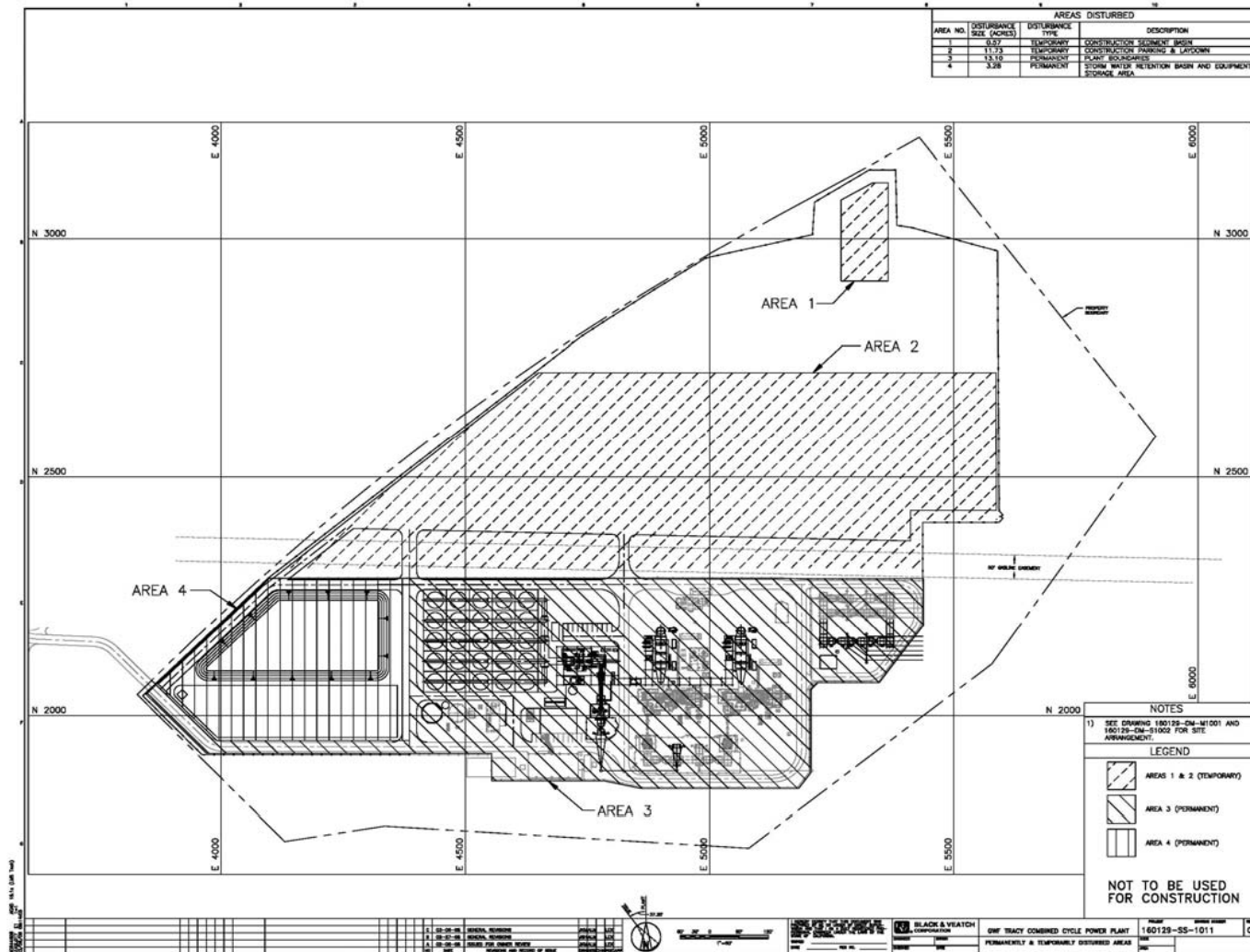
- Two New Heat Recovery Steam Generators (Limited Supplementary Natural Gas) and Stacks
- New 145 MW Steam Turbine Generator
- New Air Cooled Condenser For Steam Cycle
- Relocate Storm Water Retention Basin
- New Auxiliary Boiler



Minor Footprint Changes

- Annual Water Usage Increase of 25 ac-feet per year
- Increase Plant Footprint by 3.3 acres
- Temporarily Disturb 12.3 acres
- Onsite Relocation of Storm Water Retention Basin

General Arrangement

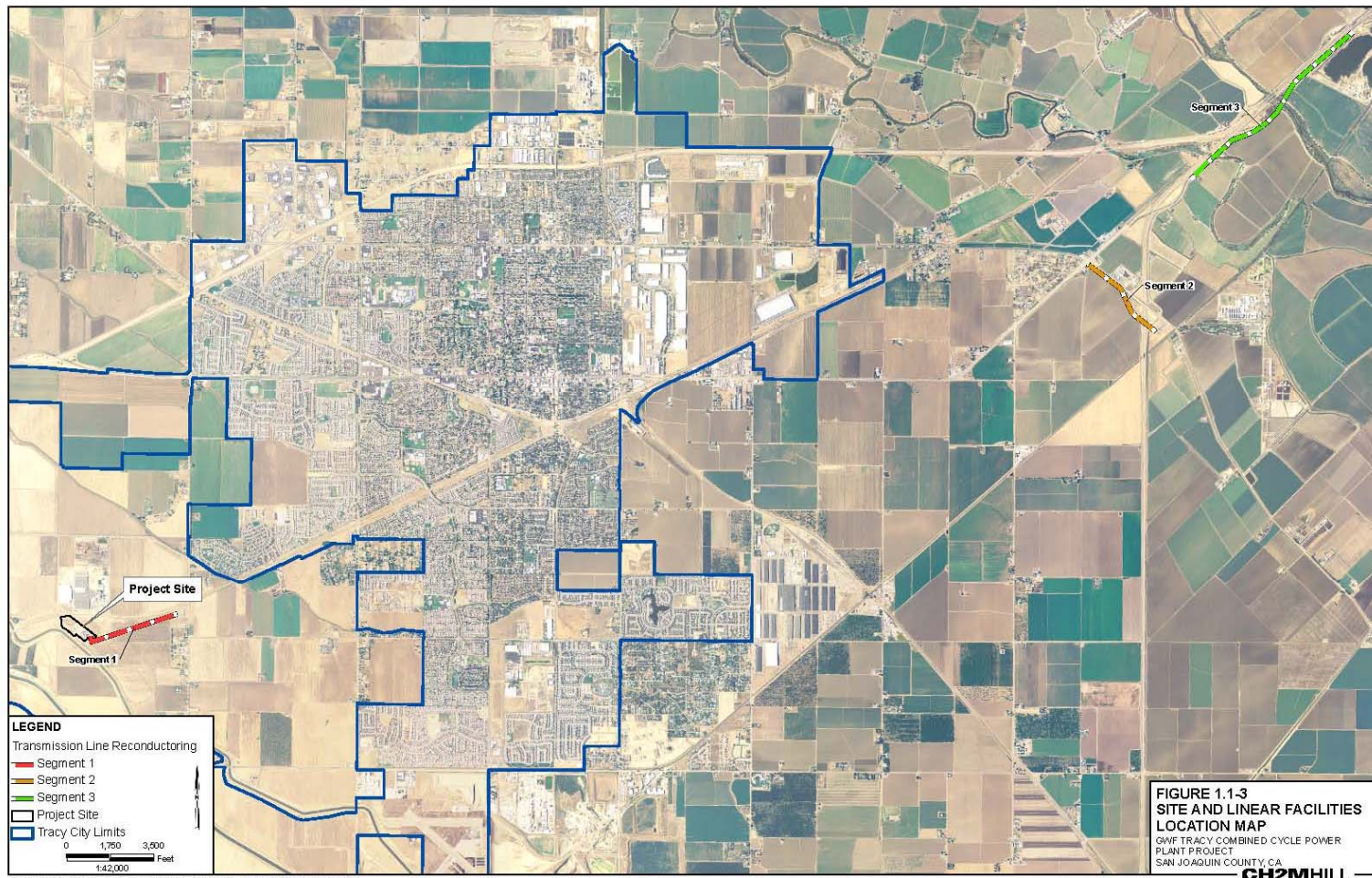




Electrical Interconnection

- Modify Onsite 115-kv Switchyard
- Adjacent Interconnection to Tesla-Manteca 115-kv Line
- Reconductoring of Three Short Offsite Transmission Line Segments (3 miles total)

Transmission Interconnect Upgrades





Air Quality Improvements

- Higher Efficiency Emission Controls
 - Selective Catalytic Reduction - NO_x
 - Oxidation Catalyst – CO and VOC
- Lower Concentration Limits
 - NO_x 2 ppmvd @15% O₂
 - CO 2 ppmvd @15% O₂
 - VOC 2 ppmvd @15% O₂
 - NH₃ 5 ppmvd @ 15% O₂



GWF Tracy Emissions Comparison

Pollutant	Existing Limit ppmvd @ 15% O₂	Proposed Limit ppmvd @ 15% O₂	Existing Emission Rate (lb/hr)	Proposed Emission Rate (lb/hr)
NO_x	5	2	26.45	10.3
CO	6	2	26.57	6.0
VOC	2	2	2.42	3.2
PM₁₀ /PM_{2.5}	NA	NA	3.3	5.8
SO₂	NA	<1	0.78	2.6
Ammonia	10	5	NA	9.4



GWF Tracy Annual Emissions

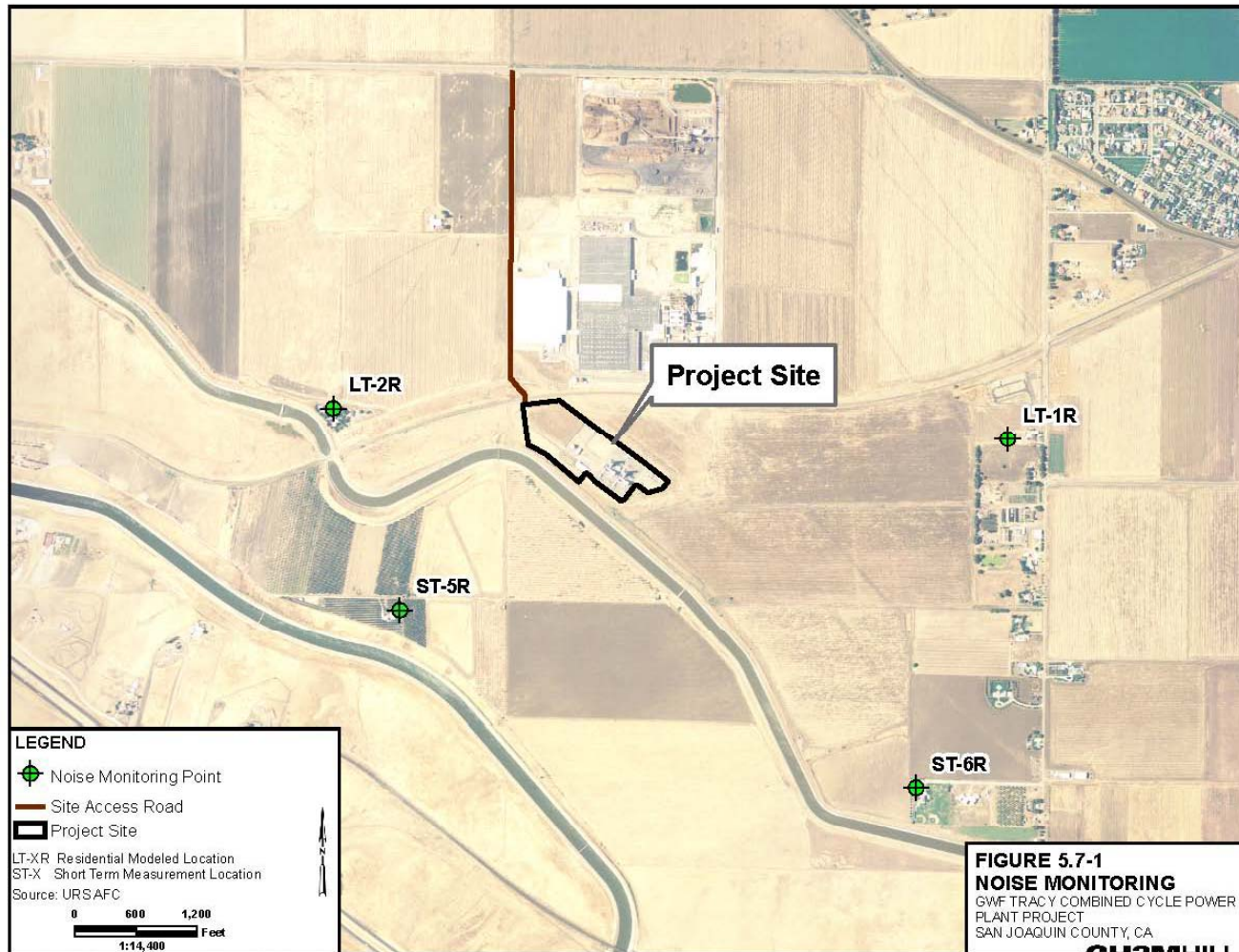
Description	NOx (lb)	CO (lb)	VOC (lb)	PM_{10/2.5} (lb)	SO₂ (lb)
TPP – Currently Permitted Emissions (2 Turbines)	306,920	143,240	26,732	53,334	11,200
Post Project Potential to Emit	180,566	161,845	32,117	66,995	13,899
<i>Project Emissions Change</i>	<i>-126,354</i>	<i>18,605</i>	<i>5,385</i>	<i>13,661</i>	<i>2,699</i>



GWF Tracy – Noise

- Designed to Achieve 42 dBA or Less at Nearest Residence
- GWF Tracy will Comply with the San Joaquin County Noise Ordinance.

Nearby Noise Receptors



SRG_YEDW54G0 69/PROJ/36681_CMT_TRACYMAP FILES/NOISE_MONITORING.MXD 02/23/09 10:06:42



Visual Resources

- No Visible Plumes
- Landscape Plan Review
- Major Equipment Color Chosen To Blend With Surrounding Environment
- Key Observation Point Analysis – No Significant Impact

Key Observation Points



X:\0\N\F\A\N\G\I\P\ROU\GWF\POWER\CO\MMO\FILES\B\W\A\FILES\GWF_TRACY_V\AERIAL\MOO\GWF_TRACY_V\AERIAL.PDF 6/26/2006 13:01:15

KOP 1

Lammers Rd. at West Schulte



KOP 1 – Proposed Modifications

Lammers Rd. at West Schulte





Additional Questions

- Doug Wheeler – Vice President
 - 925-431-1443
 - dwheeler@gwfpower.com
- Mark Kehoe – Director,
Environmental & Safety
 - 925-431-1440
 - mkehoe@gwfpower.com