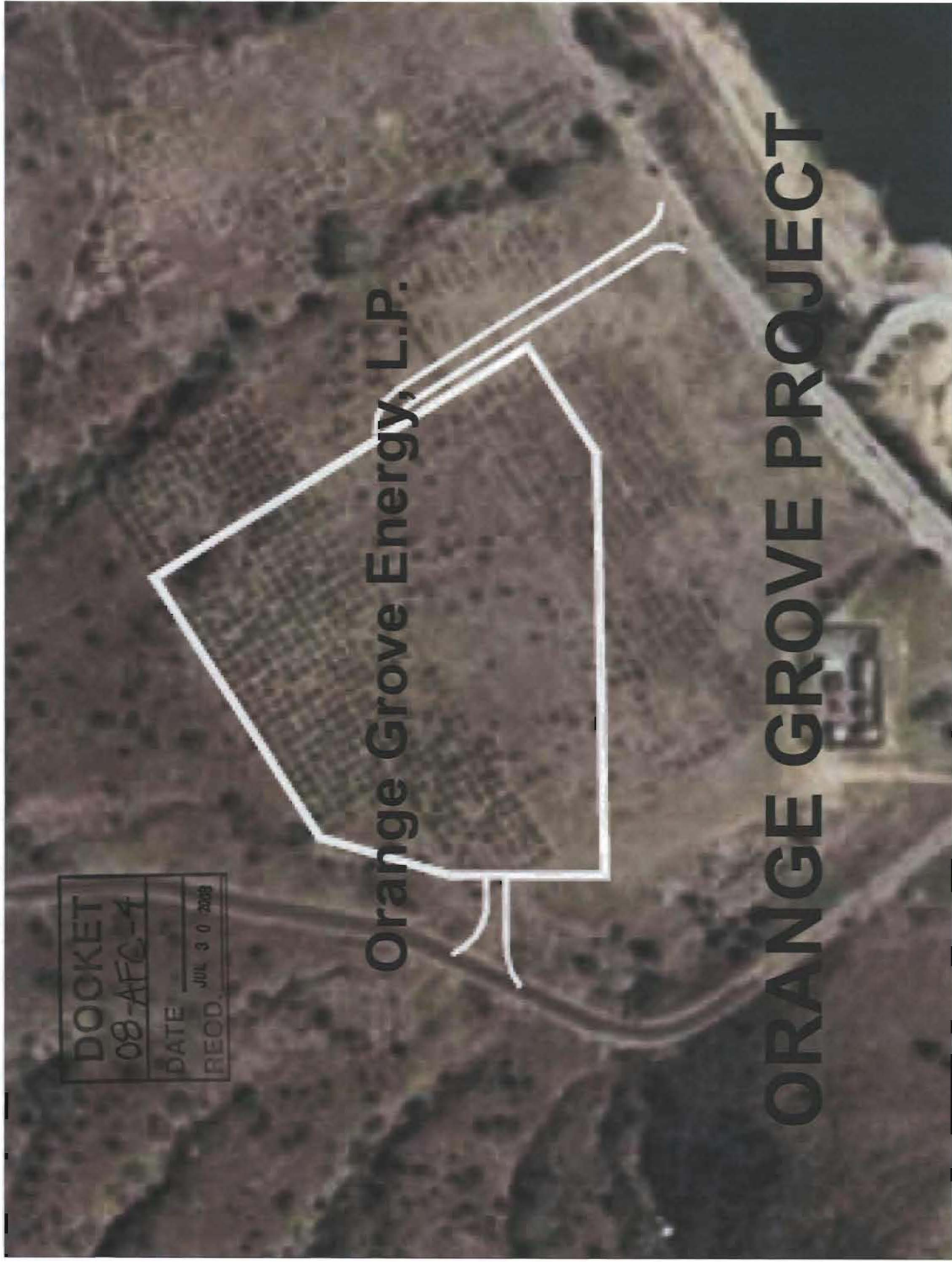


DOCKET
08-AFC-4
DATE
RECD. JUL 30 2008

Orange Grove Energy, L.P.

ORANGE GROVE PROJECT



Presentation Outline

ORANGE GROVE ENERGY, L.P.

- Introduction
- Project Overview
- AFC Environmental Review & Permits
- Key Environmental Features

Introduction (1 of 3)

ORANGE GROVE ENERGY, L.P.

- Orange Grove Energy, L.P.
- Project purpose and need (RFO)
- Peaking plant design
- Complements renewable generation “e.g. wind, solar”
- Electricity will feed SDG&E Service Area (69 KV)
- Committed measures to minimize impacts
- Project schedule

Introduction (2 of 3)

ORANGE GROVE ENERGY, L.P.

- Peaking plants respond quickly to changes in grid dynamics due to load fluctuations and intermittency of other resources.
 - Plant can reach full power in 10 minutes
 - Able to start and stop several times a day
 - Backstops intermittent resources such as wind and solar.
- Orange Grove is configured for peaking operations
- Peakers with identical technology (same dispatch characteristics) have historically run less than 200 hours per year.

Introduction (3 of 3)

ORANGE GROVE ENERGY, L.P.

- Orange Grove's expected case operations is 1,000 hours per year
- Maximum annual operation addressed in AFC and air permit application is 3,200 hours.
- Orange Grove's contract with SDG&E does not provide Orange Grove the ability or opportunity to benefit from a facility expansion.

Project Benefits

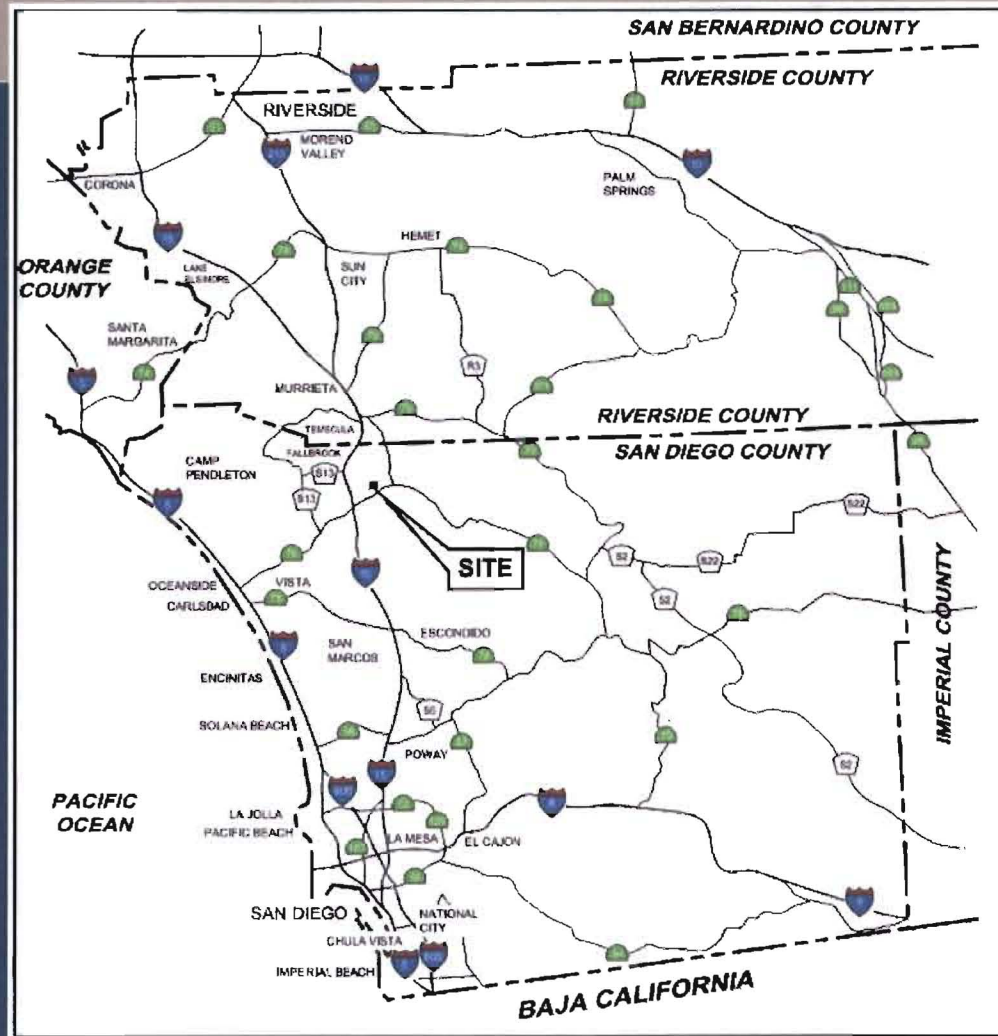
ORANGE GROVE ENERGY, L.P.

- Project will support grid reliability
- \$93 million total increase to local taxable property value
- \$6.5 million construction payroll
- \$1.1 million annual operations payroll
- \$2.9 million annual non-payroll spending
- Estimated \$1.1 million indirect stimulus
- 9 direct and estimated 14 indirect long-term jobs

Project Overview

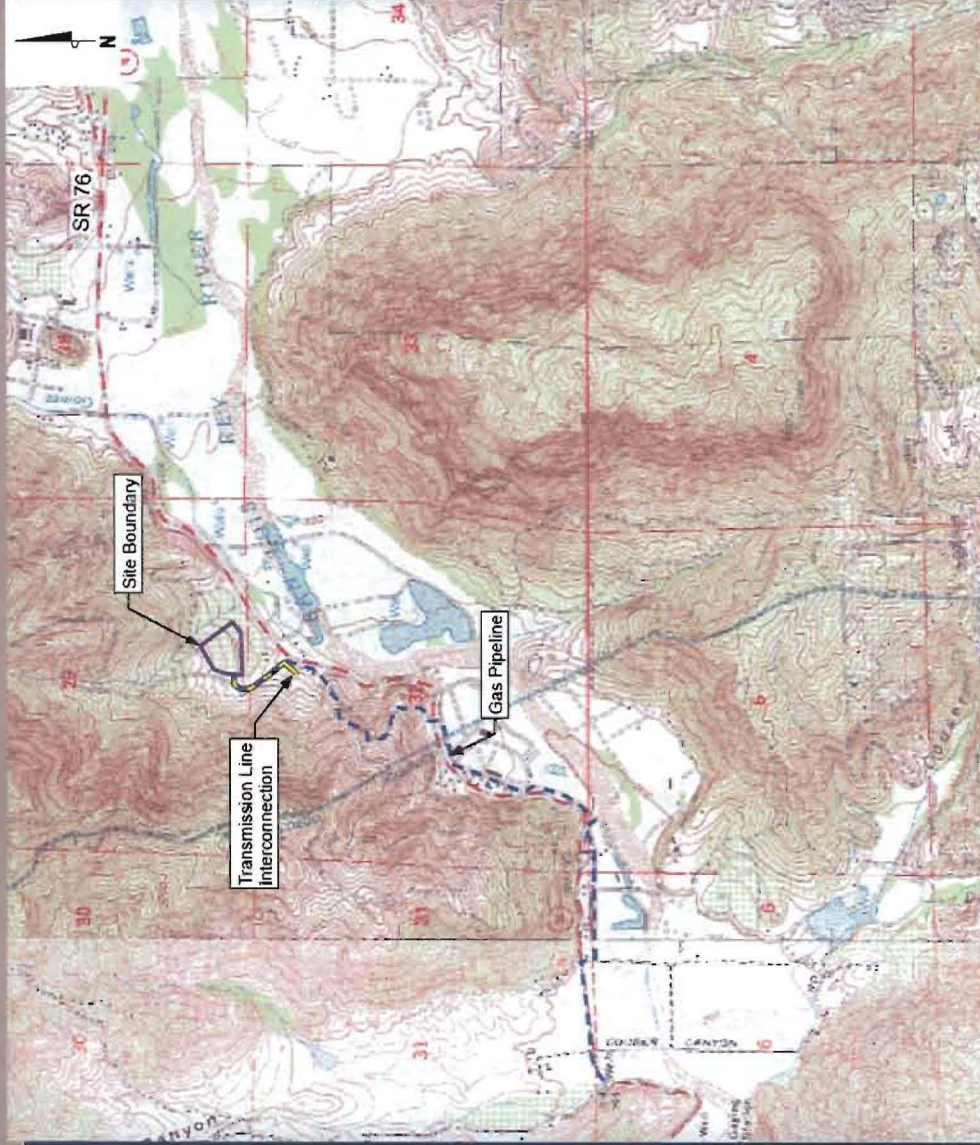
(1 of 12)

ORANGE GROVE ENERGY, L.P.



Project Overview (2 of 12)

ORANGE GROVE ENERGY, L.P.



Project Overview

(3 of 12)

ORANGE GROVE ENERGY, L.P.

- Major Project Components:
 - Net 96 MW Power Plant on 8.5-acre site
 - Two GE LM6000 SPRINT combustion turbine generators
 - Continuous Emissions Monitoring System (CEMS)
 - Best Available Control Technology for Emissions
 - Acoustic barriers for major equipment
 - Demineralized water treatment system (trailer-mounted)
 - Wastewater recycling via Reverse Osmosis
 - Appx. 0.3 mile transmission line interconnection
 - Appx. 2.4 mile natural gas pipeline (10-inch dia.)
 - Reclaim and fresh water trucked from FPUD

Project Overview (4 of 12)

ORANGE GROVE ENERGY, L.P.

- Transmission Line Interconnection:
 - Underground transmission cable
 - Interconnection to existing SDG&E Pala substation
 - Located on disturbed lands - No disturbance to natural habitat
 - Horizontal directional boring beneath normally dry drainage to avoid impact to drainage

Project Overview (5 of 12)

ORANGE GROVE ENERGY, L.P.

- Natural Gas Pipeline:
 - Underground pipeline (10-inch diameter)
 - Connection to existing SDG&E gas transmission line
 - Owned and operated by SDG&E between existing gas transmission line and proposed meter station
 - Follows existing roads and disturbed areas, except for approximately 0.1 mile
 - Designed to minimize habitat disturbance and impacts to SR 76 travelers

Project Overview (6 of 12)

ORANGE GROVE ENERGY, L.P.

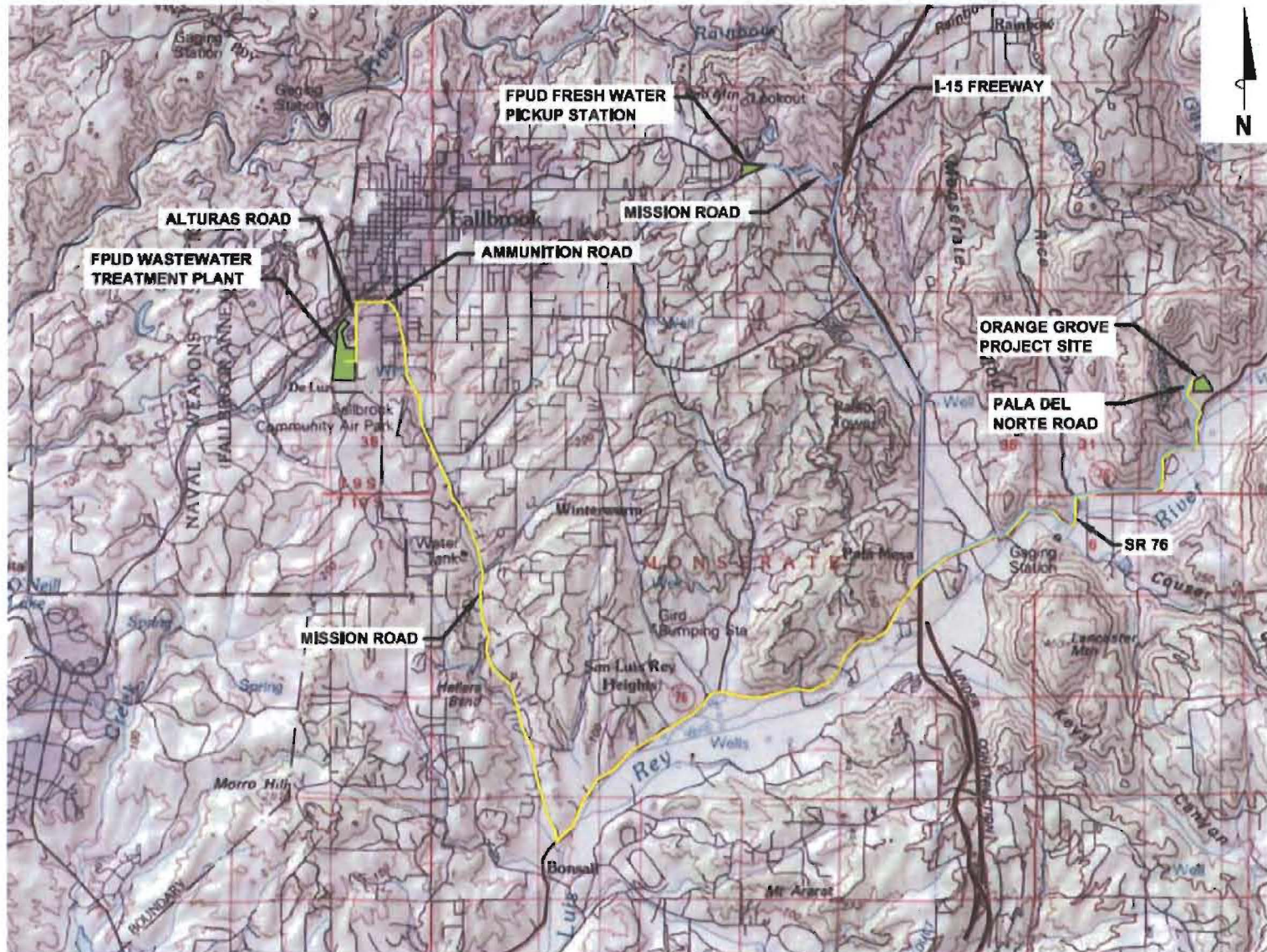
- Reclaim and Fresh Water:
 - 12.1 AFY expected Reclaim Water Use
 - 21.1 AFY expected Fresh Water Use
 - Trucks sized to limit peak water hauling to one truck per hour each for reclaim and fresh water.

Project Overview (7 of 12)

ORANGE GROVE ENERGY, L.P.

LEGEND

- RECLAIM WATER HAUL ROUTE
- FRESH WATER HAUL ROUTE

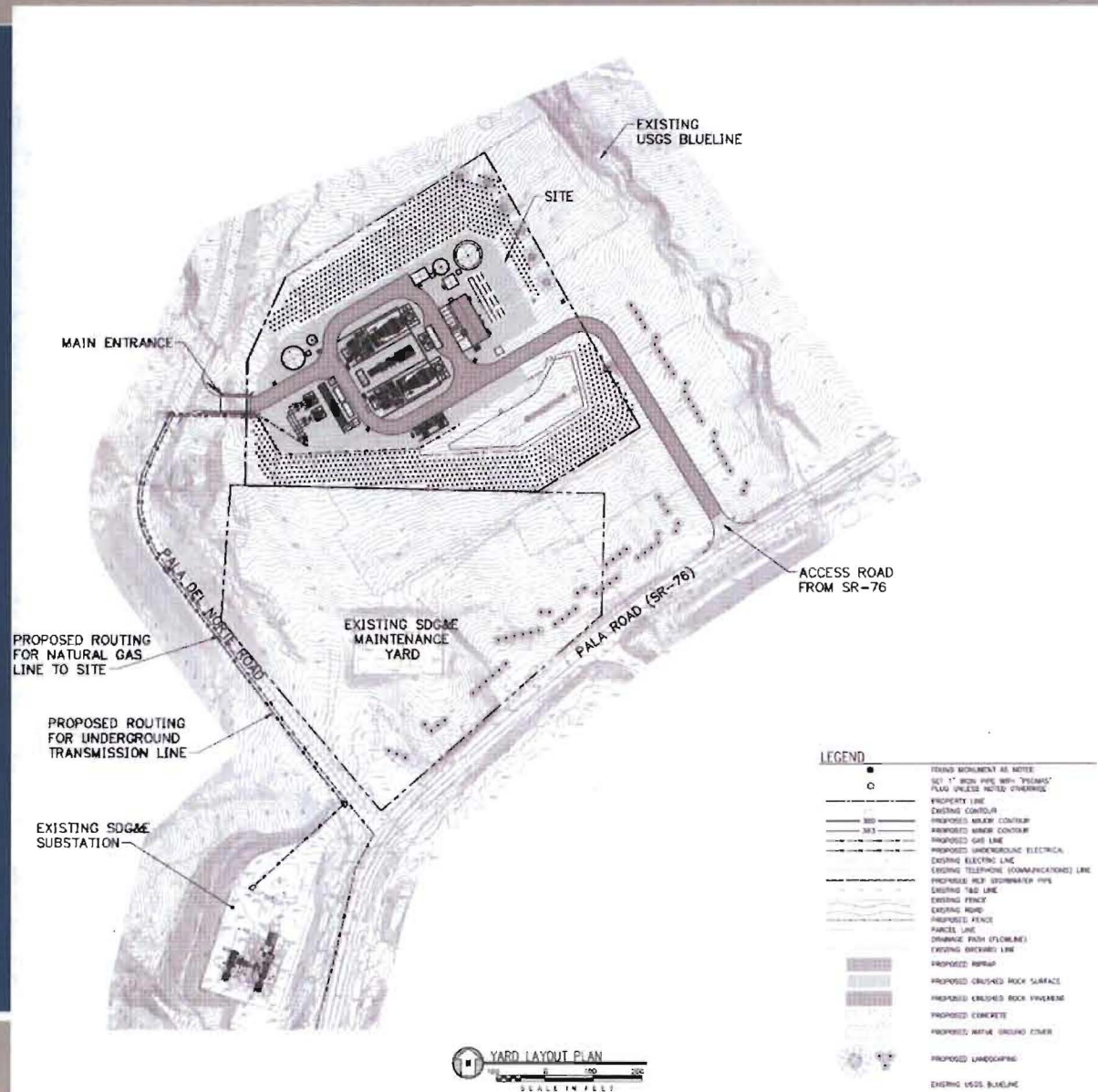


0 1 1/2 3 MILES

Project Overview

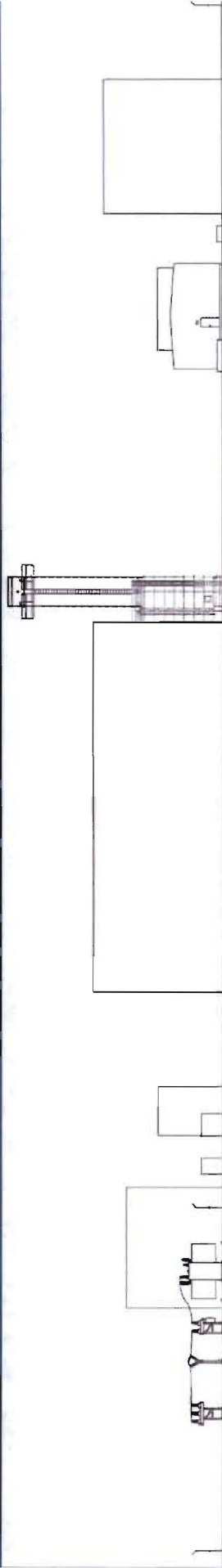
(8 of 12)

ORANGE GROVE ENERGY, L.P.



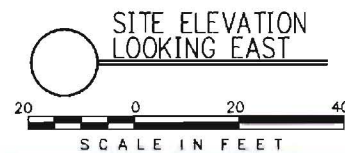
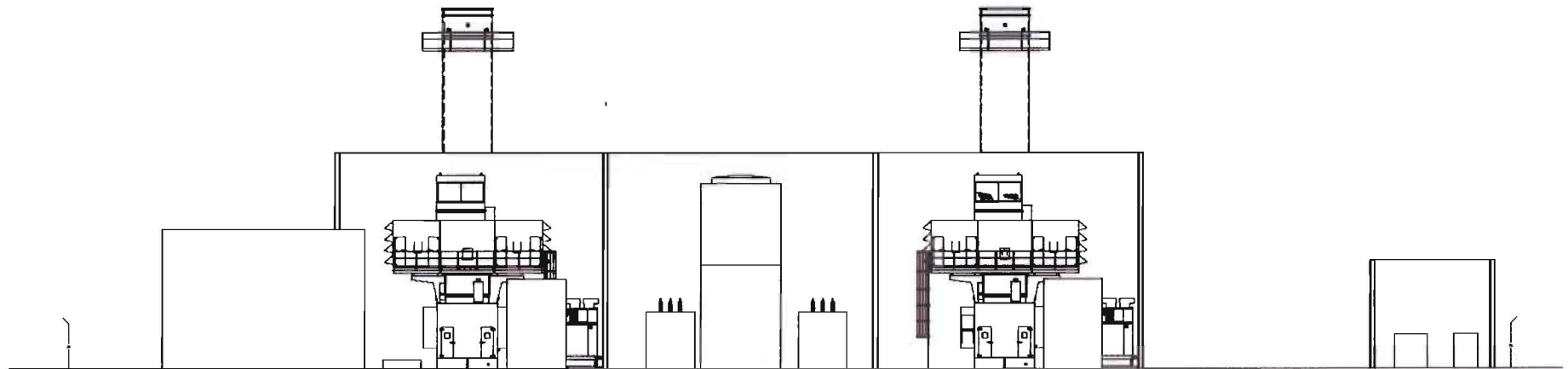
Project Overview (9 of 12)

ORANGE GROVE ENERGY, L.P.



Project Overview (10 of 12)

ORANGE GROVE ENERGY, L.P.



Project Overview (11 of 12)

ORANGE GROVE ENERGY, L.P.



Project Overview (12 of 12)

ORANGE GROVE ENERGY, L.P.



AFC Environmental Review & Permitting (1 of 2)

ORANGE GROVE ENERGY, L.P.

- Air quality
- Geologic hazards/resources
- Agriculture
- Soils
- Water resources
- Biological resources
- Cultural resources
- Paleontology
- Land Use
- Socioeconomics
- Transportation
- Noise
- Visual resources
- Waste management
- Hazardous materials
- Public health
- Worker safety
- Transmission system impacts

AFC Environmental Review & Permitting (2 of 2)

ORANGE GROVE ENERGY, L.P.

- Key Permits/Environmental Documents:
 - AFC/CEQA Review (CEC)
 - Grading Permit (County)
 - Habitat Loss Permit (County)
 - Authority to Construct/Permits to Operate (APCD)
 - Construction storm water NPDES permit (SWRCB)
 - Streambed Alteration Agreement (CDFG)
 - Encroachment Permits (Caltrans)

Key Environmental Features (1 of 6)

ORANGE GROVE ENERGY, L.P.

- Air Quality:
 - Clean-burning natural gas fuel
 - BACT to limit emissions
 - Continuous Emissions Monitoring Systems
- Water Resources:
 - Designed to avoid disturbance to drainages
 - No discharge of process water
 - Storm water detained onsite for 100-year storm
 - Project will not impact ground water basin

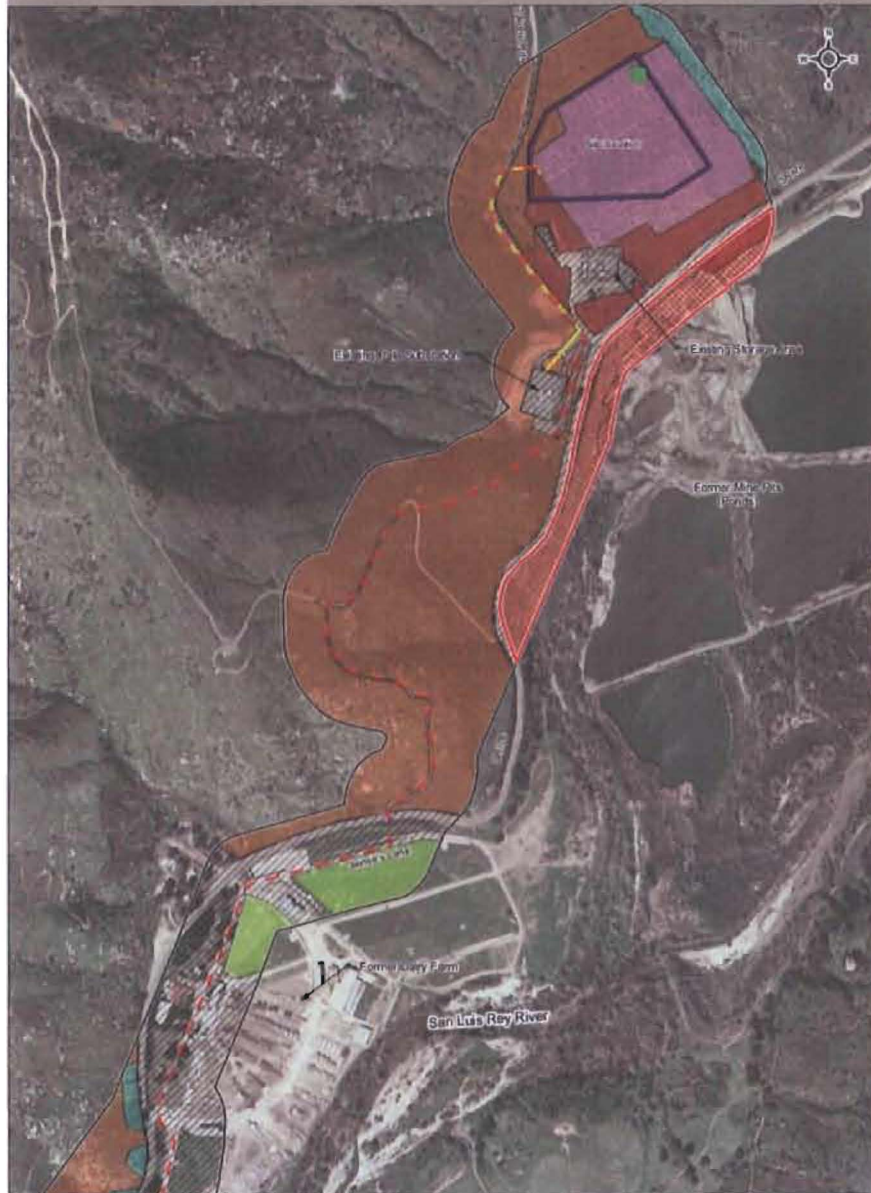
Key Environmental Features (2 of 6)

ORANGE GROVE ENERGY, L.P.

- Biological Resources:
 - Site is a former orange grove
 - Minimum disturbance to natural habitat (9.3 acres)
 - No Threatened or Endangered species onsite
 - Gas pipeline and electric transmission line located along existing roads and disturbed areas
 - Only native species will be planted

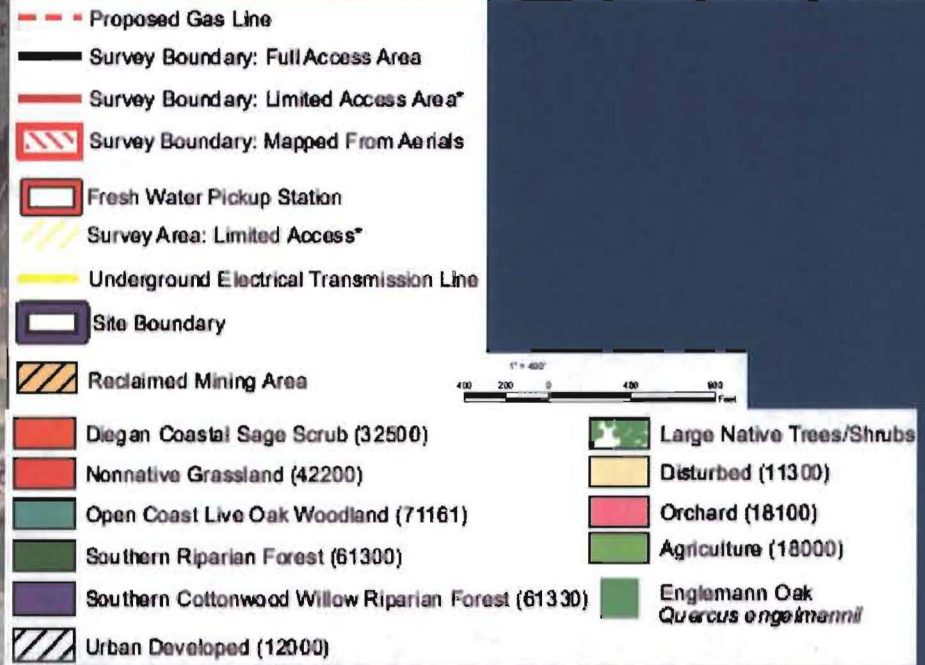
Key Environmental Features (3 of 6)

ORANGE GROVE ENERGY, L.P.



Key Environmental Features (4 of 6)

ORANGE GROVE ENERGY, L.P.



Key Environmental Features (5 of 6)

ORANGE GROVE ENERGY, L.P.

- Land Use:
 - Minimum site size (8.5 acres)
 - Use is consistent with current zoning
- Transportation:
 - Negligible operations traffic (up to 6 employees/shift)
 - Average 63 construction vehicles per day (6 months)
- Socioeconomics:
 - \$93 million capital investment will contribute to tax base
 - Minimal demand on infrastructure and public services

Key Environmental Features (6 of 6)

ORANGE GROVE ENERGY, L.P.

- Noise Control:
 - Acoustic barriers around major equipment
 - Operations typically in daytime hours
- Visual Resources:
 - Site is hidden from view by surrounding topography
 - Few opportunities for view
 - Finishes will be selected to blend with landscape
 - Native vegetation to be used for screening

Project Benefits

ORANGE GROVE ENERGY, L.P.

- Project will support local grid reliability
- \$93 million total increase to local taxable property value
- \$6.5 million construction payroll
- \$1.1 million annual operations payroll
- \$2.9 million annual non-payroll spending
- Indirect “ripple” effect = job, spending and tax benefits

Docket Optical System - Re: Orange Grove Hearing Presentations

From: Felicia Miller
To: Docket Optical System
Date: 7/30/2008 1:38 PM
Subject: Re: Orange Grove Hearing Presentations
Attachments: Informational Hearing Presentation_Final_JT_7_25-08.pptm

Don't know why it disappeared, but here it is again.
Thanks - Felicia

>>> Docket Optical System 7/30/2008 12:49 PM >>>
Only one document was attached. It is the one titled "OG PP masterfile."

Dockets Staff
Siting / Dockets Unit
916-654-5076

>>> Felicia Miller 7/30/2008 8:08 AM >>>
Please docket the 2 presentations from the Orange Grove Information Hearing yesterday.
Please send me email confirmation that the 2 documents have been docketed.
Thanks - Felicia