



September 8, 2010

Mr. Christopher Meyer
CEC Project Manager
Attn: Docket No. 08-AFC-13
California Energy Commission
1516 Ninth Street
Sacramento, CA 95814-5512

DOCKET	
08-AFC-13	
DATE	SEP 08 2010
RECD.	SEP 08 2010

RE: Calico Solar (formerly Solar One) Project (08-AFC-13)
Applicant's Submittal of Reduced Project Boundary Scenarios

Dear Mr. Meyer:

At the request of the Committee Order dated September 3rd, 2010, Tessera Solar hereby submits analysis of the following six different reduced project boundary scenarios as well as an analysis of the impacts of removing the highest quality habitat within each section:

- Scenario 1: Remove the detention basin area.
- Scenario 2: Remove the detention basin area and the highest quality habitat (labeled as 5:1 mitigation) in Section 4.
- Scenario 3: Remove the detention basin area and the highest quality habitat (labeled as 5:1 mitigation) in Section 4 and Section 35.
- Scenario 4: Remove the detention basin area and the highest quality habitat (labeled as 5:1 mitigation) in Section 4, Section 35, and Section 6.
- Scenario 5: Remove the detention basin area and the highest quality habitat (labeled as 5:1 mitigation) in Section 4, Section 35, and Section 5.
- Scenario 6: Remove all of the habitat labeled as 5:1 mitigation.

Each scenario is presented in both map and tabular form attached to this letter and summarized in the table below.

	Acreage Removed	Adult Desert Tortoise Excluded from Boundary*	Remaining Adult Desert Tortoises in Project Boundary*	MW Lost	Total MW
Scenario 1	486 acres	10 tortoises	38 tortoises	0 MW	850 MW
Scenario 2	770 acres	15 tortoises	33 tortoises	47.7 MW	802.3 MW
Scenario 3	897 acres	20 tortoises	28 tortoises	68.8 MW	781.2 MW
Scenario 4	1199 acres	26 tortoises	22 tortoises	118.7 MW	731.3 MW
Scenario 5	1492 acres	38 tortoises	10 tortoises	167.9 MW	682.1 MW
Scenario 6	1971 acres	47 tortoises	1 tortoise	247.1 MW	602.9 MW
High Quality Area from Section 4	284 acres	5 tortoises	43 tortoises	47.7 MW	802.3 MW
High Quality Area from Section 35	127 acres	5 tortoises	43 tortoises	21.1 MW	828.9 MW
High Quality Area from Section 6	302 acres	6 tortoises	42 tortoises	49.9 MW	800.1 MW
High Quality Area from Section 5	595 acres	18 tortoises	30 tortoises	99.1 MW	750.9 MW

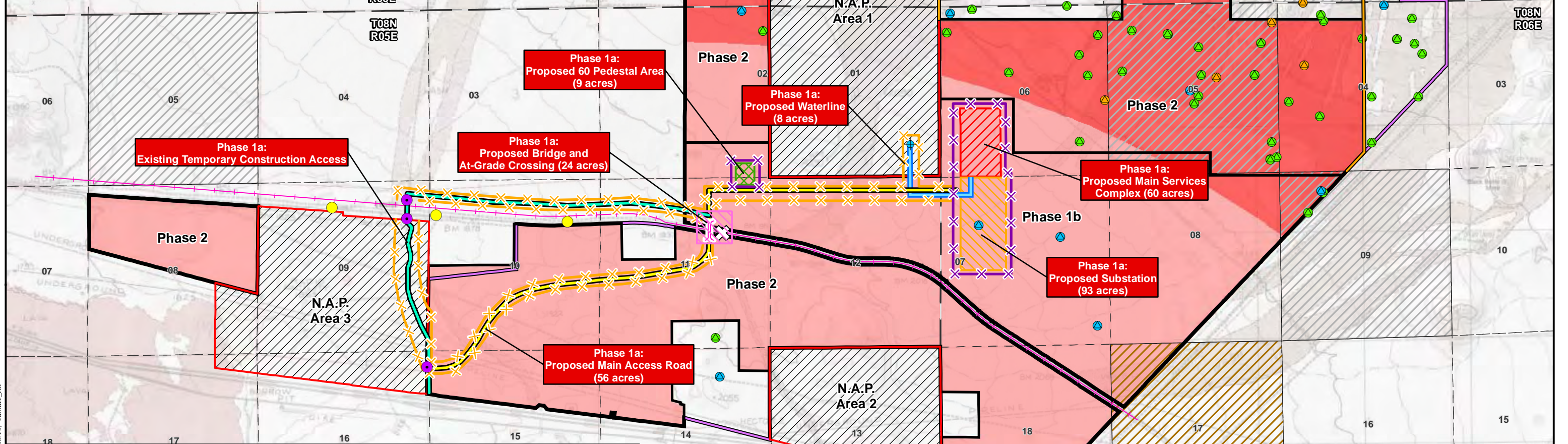
* Number corresponds to adult tortoises (both in and out of burrow) removed when compared to the current proposed 6,215 acre Project. Detailed tables provided as attachments delineate tortoise age group as well as burrows by category.

I certify under penalty of perjury that the foregoing is true, correct, and complete to the best of my knowledge.

Sincerely,



Felicia L. Bellows
Vice President of Development



Path: G:\gis\projects\157726581\00\mxd\Bio\DT_Reloc_Plan\DT_Scenarios\Scenario1.mxd, 09/08/10, camille_bill

LEGEND

Scenario 1 Project Acreage: 5729

- Temporary Exclosureary Fencing (Desert Tortoise (DT) Only, 12 miles)
- Temporary Fencing (Chain-link and DT Exclusionary Combined, 3.3 miles)
- Cattle Guard
- Phase 1a Features (250 ac)**
- Main Services Area (60 ac)
- Substation Area (93 ac)
- 60 Pedestal Area (9 ac)
- Water Line (0.51 mile, 8 ac, 126ft ROW)
- Temporary Construction and Permanent Access Road (3.7 miles, 56 ac, 126ft ROW)
- Temporary Construction Access until Temporary At-Grade Crossing is Complete
- Bridge and At-Grade Crossing (24 ac)
- Proposed Bridge
- Temporary At-Grade Crossing

- Project Boundary
- N.A.P. (Not a Part)
- Original Boundary (8,230 ac)
- Current Project Boundary (6,215 acres)
- Pisgah Substation
- Existing Trestle
- Township/Range Boundary
- Section
- LWCF Acquisition
- BLM Acquired Land
- Well

2010 Desert Tortoise Observations (URS)

- Adult
- Juvenile
- Subadult
- Adult In Burrow

Desert Tortoise Mitigation Ratios

- 1:1 Mitigation (4244 ac)
- 5:1 Mitigation (1485 ac)

Note: Fencing distances and some project features have been moved or exaggerated to show separation at this scale.

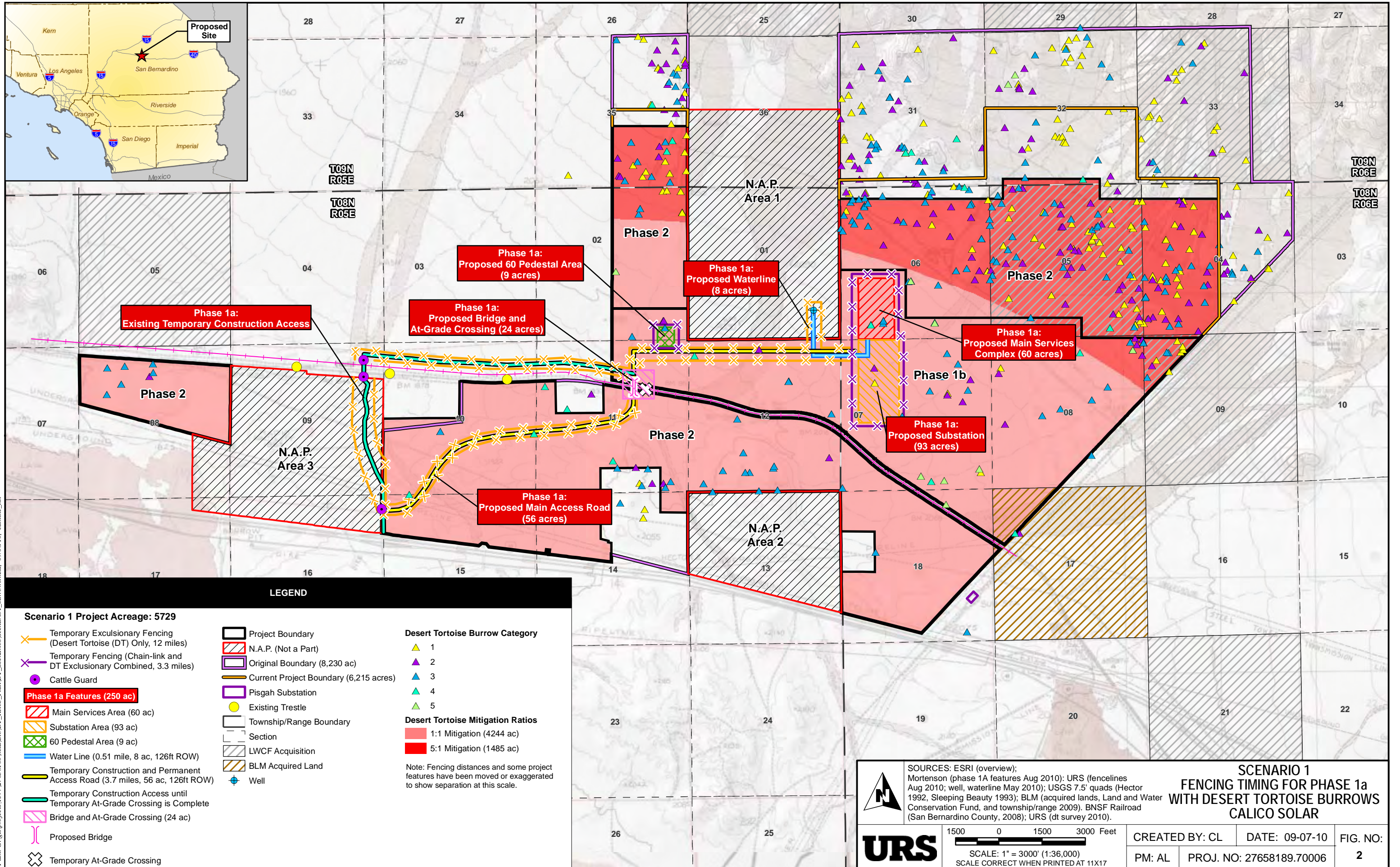


SOURCES: ESRI (overview); Mortenson (phase 1A features Aug 2010); URS (fencelines Aug 2010; well, waterline May 2010); USGS 7.5' quads (Hector 1992, Sleeping Beauty 1993); BLM (acquired lands, Land and Water Conservation Fund, and township/range 2009). BNSF Railroad (San Bernardino County, 2008); URS (dt survey 2010).

1500 0 1500 3000 Feet
 SCALE: 1" = 3000' (1:36,000)
 SCALE CORRECT WHEN PRINTED AT 11X17

**SCENARIO 1
 FENCING TIMING FOR PHASE 1a
 WITH DESERT TORTOISE SIGHTINGS
 CALICO SOLAR**

CREATED BY: CL DATE: 09-07-10 FIG. NO:
 PM: AL PROJ. NO: 27658189.70006 1



Path: G:\gis\projects\157726581\00\mxd\Bio\DT_Reloc_Plan\DT_Scenarios\Scenario1_L_burrows.mxd_09/08/10_camilie_hill

Scenario 1 Project Acreage: 5729

- Temporary Exclosureary Fencing (Desert Tortoise (DT) Only, 12 miles)
- Temporary Fencing (Chain-link and DT Exclusionary Combined, 3.3 miles)
- Cattle Guard
- Phase 1a Features (250 ac)**
- Main Services Area (60 ac)
- Substation Area (93 ac)
- 60 Pedestal Area (9 ac)
- Water Line (0.51 mile, 8 ac, 126ft ROW)
- Temporary Construction and Permanent Access Road (3.7 miles, 56 ac, 126ft ROW)
- Temporary Construction Access until Temporary At-Grade Crossing is Complete
- Bridge and At-Grade Crossing (24 ac)
- Proposed Bridge
- Temporary At-Grade Crossing

- Project Boundary
- N.A.P. (Not a Part)
- Original Boundary (8,230 ac)
- Current Project Boundary (6,215 acres)
- Pisgah Substation
- Existing Trestle
- Township/Range Boundary
- Section
- LWCF Acquisition
- BLM Acquired Land
- Well

Desert Tortoise Burrow Category

- 1
- 2
- 3
- 4
- 5

Desert Tortoise Mitigation Ratios

- 1:1 Mitigation (4244 ac)
- 5:1 Mitigation (1485 ac)

Note: Fencing distances and some project features have been moved or exaggerated to show separation at this scale.

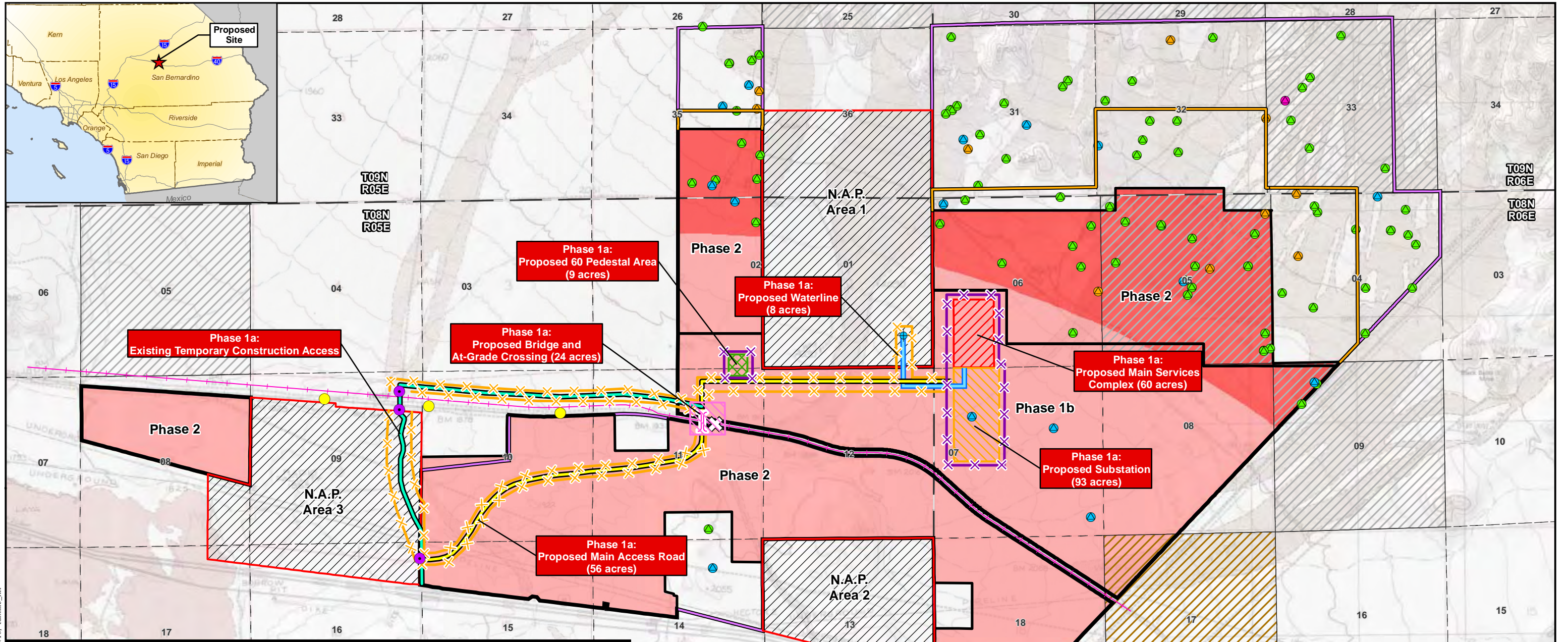


SOURCES: ESRI (overview); Mortenson (phase 1A features Aug 2010); URS (fencelines Aug 2010; well, waterline May 2010); USGS 7.5' quads (Hector 1992, Sleeping Beauty 1993); BLM (acquired lands, Land and Water Conservation Fund, and township/range 2009). BNSF Railroad (San Bernardino County, 2008); URS (dt survey 2010).

1500 0 1500 3000 Feet
 SCALE: 1" = 3000' (1:36,000)
 SCALE CORRECT WHEN PRINTED AT 11X17

**SCENARIO 1
 FENCING TIMING FOR PHASE 1a
 WITH DESERT TORTOISE BURROWS
 CALICO SOLAR**

CREATED BY: CL DATE: 09-07-10 FIG. NO:
 PM: AL PROJ. NO: 27658189.70006 2



LEGEND

Scenario 2 Project Acreage: 5445

- Temporary Exclusionary Fencing (Desert Tortoise (DT) Only, 12 miles)
- Temporary Fencing (Chain-link and DT Exclusionary Combined, 3.3 miles)
- Cattle Guard

Phase 1a Features (250 ac)

- Main Services Area (60 ac)
- Substation Area (93 ac)
- 60 Pedestal Area (9 ac)
- Water Line (0.51 mile, 8 ac, 126ft ROW)
- Temporary Construction and Permanent Access Road (3.7 miles, 56 ac, 126ft ROW)
- Temporary Construction Access until Temporary At-Grade Crossing is Complete
- Bridge and At-Grade Crossing (24 ac)
- Proposed Bridge
- Temporary At-Grade Crossing

- Project Boundary
- N.A.P. (Not a Part)
- Original Boundary (8,230 ac)
- Current Project Boundary (6,215 acres)
- Pisgah Substation
- Existing Trestle
- Township/Range Boundary
- Section
- LWCF Acquisition
- BLM Acquired Land
- Well

2010 Desert Tortoise Observations (URS)

- Adult
- Juvenile
- Subadult
- Adult In Burrow

Desert Tortoise Mitigation Ratios

- 1:1 Mitigation (4244 ac)
- 5:1 Mitigation (1201 ac)

Note: Fencing distances and some project features have been moved or exaggerated to show separation at this scale.

SCENARIO 2 FENCING TIMING FOR PHASE 1a WITH DESERT TORTOISE SIGHTINGS CALICO SOLAR

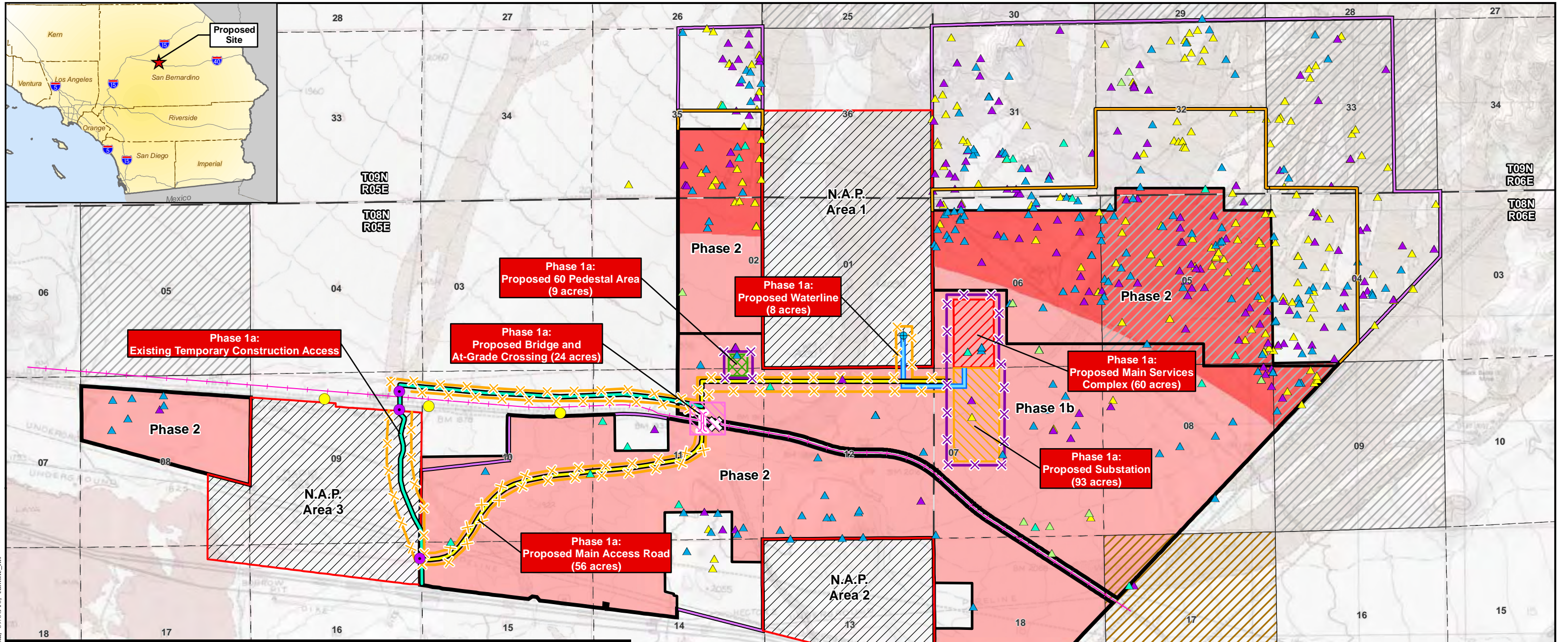
SOURCES: ESRI (overview); Mortenson (phase 1A features Aug 2010); URS (fencelines Aug 2010; well, waterline May 2010); USGS 7.5' quads (Hector 1992, Sleeping Beauty 1993); BLM (acquired lands, Land and Water Conservation Fund, and township/range 2009). BNSF Railroad (San Bernardino County, 2008); URS (dt survey 2010).

UR S

1500 0 1500 3000 Feet
SCALE: 1" = 3000' (1:36,000)
SCALE CORRECT WHEN PRINTED AT 11X17

CREATED BY: CL	DATE: 09-07-10	FIG. NO:
PM: AL	PROJ. NO: 27658189.70006	3

Path: G:\gis\projects\1577276581\00\mxd\Bio\DT_Reloc_Plan\DT_Scenarios\Scenario2.mxd_09/08/10_cantille_111



Path: G:\gis\projects\1577276581\00\mxd\Bio\DT_Reloc_Plan\DT_Scenarios\Scenario2_burrows.mxd_09/08/10_camilie_hill

LEGEND

Scenario 2 Project Acreage: 5445

- Temporary Excursionary Fencing (Desert Tortoise (DT) Only, 12 miles)
- Temporary Fencing (Chain-link and DT Exclusionary Combined, 3.3 miles)
- Cattle Guard

Phase 1a Features (250 ac)

- Main Services Area (60 ac)
- Substation Area (93 ac)
- 60 Pedestal Area (9 ac)
- Water Line (0.51 mile, 8 ac, 126ft ROW)
- Temporary Construction and Permanent Access Road (3.7 miles, 56 ac, 126ft ROW)
- Temporary Construction Access until Temporary At-Grade Crossing is Complete
- Bridge and At-Grade Crossing (24 ac)
- Proposed Bridge
- Temporary At-Grade Crossing

- Project Boundary
- N.A.P. (Not a Part)
- Original Boundary (8,230 ac)
- Current Project Boundary (6,215 acres)
- Pisgah Substation
- Existing Trestle
- Township/Range Boundary
- Section
- LWCF Acquisition
- BLM Acquired Land
- Well

Desert Tortoise Burrow Category

- 1
- 2
- 3
- 4
- 5

Desert Tortoise Mitigation Ratios

- 1:1 Mitigation (4244 ac)
- 5:1 Mitigation (1201 ac)

Note: Fencing distances and some project features have been moved or exaggerated to show separation at this scale.

SCENARIO 2 FENCING TIMING FOR PHASE 1a WITH DESERT TORTOISE BURROWS CALICO SOLAR

SOURCES: ESRI (overview); Mortenson (phase 1A features Aug 2010); URS (fencelines Aug 2010; well, waterline May 2010); USGS 7.5' quads (Hector 1992, Sleeping Beauty 1993); BLM (acquired lands, Land and Water Conservation Fund, and township/range 2009). BNSF Railroad (San Bernardino County, 2008); URS (dt survey 2010).

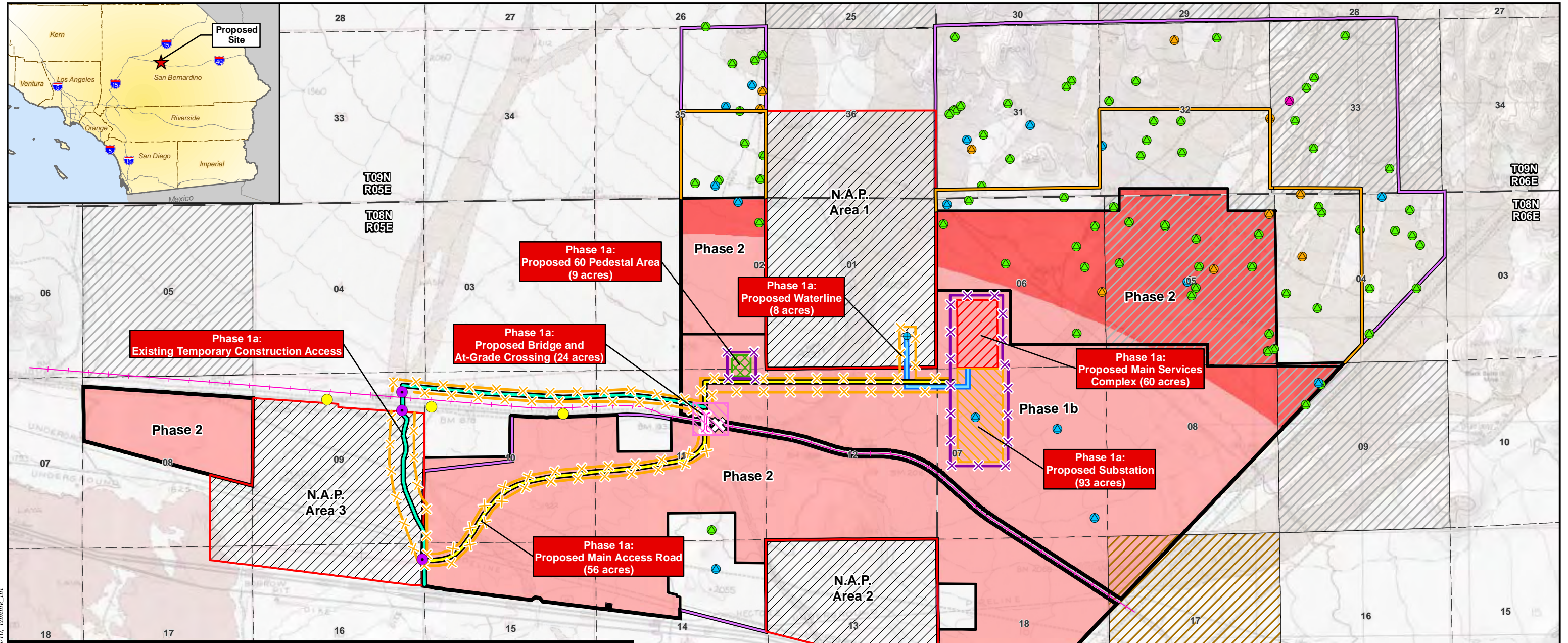
URS

1500 0 1500 3000 Feet

SCALE: 1" = 3000' (1:36,000)
SCALE CORRECT WHEN PRINTED AT 11X17

CREATED BY: CL DATE: 09-07-10 FIG. NO: 4

PM: AL PROJ. NO: 27658189.70006



Path: G:\gis\projects\157726581\00\mxd\Bio\DT_Reloc_Plan\DT_Scenarios\Scenario3.mxd_09/08/10_cantille_ill

LEGEND

Scenario 3 Project Acreage: 5318

- Temporary Exclosure Fencing (Desert Tortoise (DT) Only, 12 miles)
- Temporary Fencing (Chain-link and DT Exclusionary Combined, 3.3 miles)
- Cattle Guard

Phase 1a Features (250 ac)

- Main Services Area (60 ac)
- Substation Area (93 ac)
- 60 Pedestal Area (9 ac)
- Water Line (0.51 mile, 8 ac, 126ft ROW)
- Temporary Construction and Permanent Access Road (3.7 miles, 56 ac, 126ft ROW)
- Temporary Construction Access until Temporary At-Grade Crossing is Complete
- Bridge and At-Grade Crossing (24 ac)
- Proposed Bridge
- Temporary At-Grade Crossing

- Project Boundary
- N.A.P. (Not a Part)
- Original Boundary (8,230 ac)
- Current Project Boundary (6,215 acres)
- Pisgah Substation
- Existing Trestle
- Township/Range Boundary
- Section
- LWCF Acquisition
- BLM Acquired Land
- Well

2010 Desert Tortoise Observations (URS)

- Adult
- Juvenile
- Subadult
- Adult In Burrow

Desert Tortoise Mitigation Ratios

- 1:1 Mitigation (4244 ac)
- 5:1 Mitigation (1074 ac)

Note: Fencing distances and some project features have been moved or exaggerated to show separation at this scale.

SCENARIO 3 FENCING TIMING FOR PHASE 1a WITH DESERT TORTOISE SIGHTINGS CALICO SOLAR

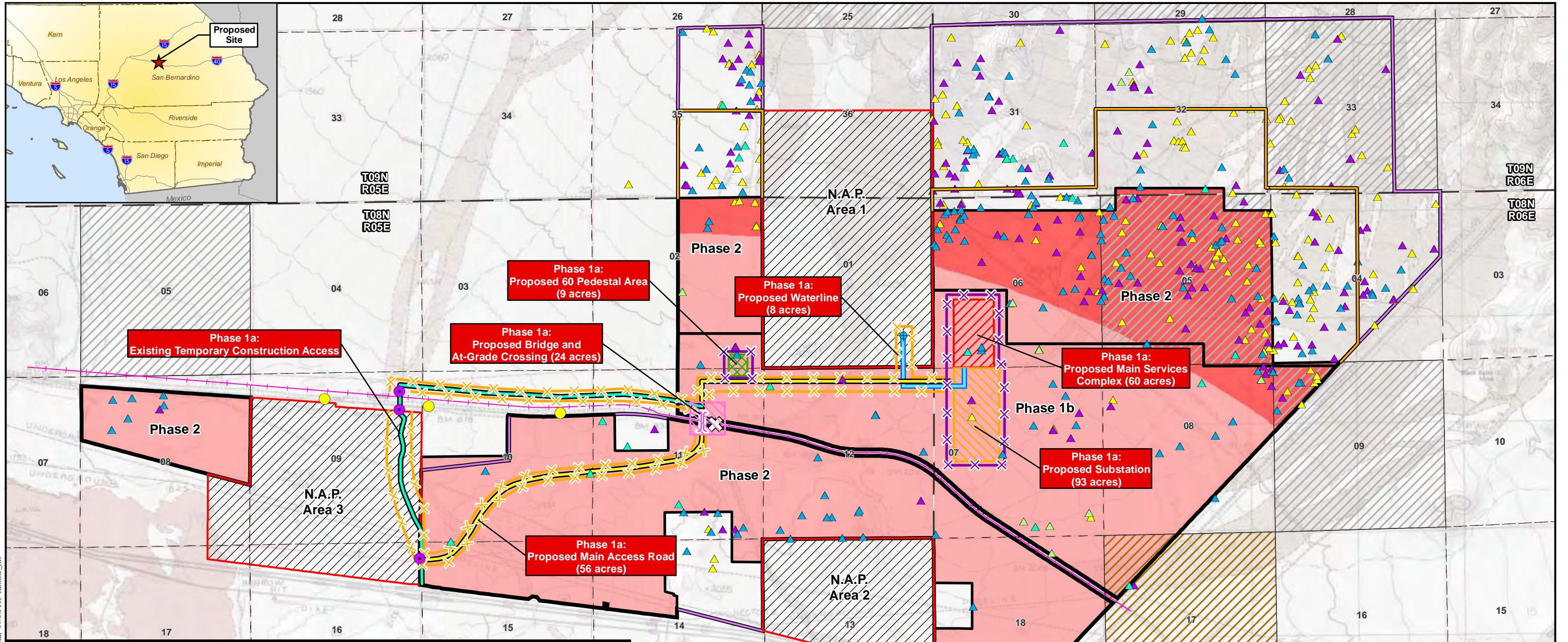
SOURCES: ESRI (overview); Mortenson (phase 1A features Aug 2010); URS (fencelines Aug 2010; well, waterline May 2010); USGS 7.5' quads (Hector 1992, Sleeping Beauty 1993); BLM (acquired lands, Land and Water Conservation Fund, and township/range 2009). BNSF Railroad (San Bernardino County, 2008); URS (dt survey 2010).

1500 0 1500 3000 Feet

SCALE: 1" = 3000' (1:36,000)
SCALE CORRECT WHEN PRINTED AT 11X17

CREATED BY: CL DATE: 09-07-10 FIG. NO: 5

PM: AL PROJ. NO: 27658189.70006



Path: G:\gis\projects\1577276581\00\mxd\Bio\DT_Reloc_Plan\DT_Scenarios\Scenario3_burrows.mxd_09/08/10_camilie_hill

LEGEND

Scenario 3 Project Acreage: 5318

- Temporary Exclusionary Fencing (Desert Tortoise (DT) Only, 12 miles)
- Temporary Fencing (Chain-link and DT Exclusionary Combined, 3.3 miles)
- Cattle Guard
- Phase 1a Features (250 ac)**
- Main Services Area (60 ac)
- Substation Area (93 ac)
- 60 Pedestal Area (9 ac)
- Water Line (0.51 mile, 8 ac, 126ft ROW)
- Temporary Construction and Permanent Access Road (3.7 miles, 56 ac, 126ft ROW)
- Temporary Construction Access until
- Temporary At-Grade Crossing is Complete
- Bridge and At-Grade Crossing (24 ac)
- Proposed Bridge
- Temporary At-Grade Crossing
- Project Boundary
- N.A.P. (Not a Part)
- Original Boundary (8,230 ac)
- Current Project Boundary (6,215 acres)
- Pisgah Substation
- Existing Trestle
- Township/Range Boundary
- Section
- LWCF Acquisition
- BLM Acquired Land
- Well

Desert Tortoise Burrow Category

- 1
- 2
- 3
- 4
- 5

Desert Tortoise Mitigation Ratios

- 1:1 Mitigation (4244 ac)
- 5:1 Mitigation (1074 ac)

Note: Fencing distances and some project features have been moved or exaggerated to show separation at this scale.



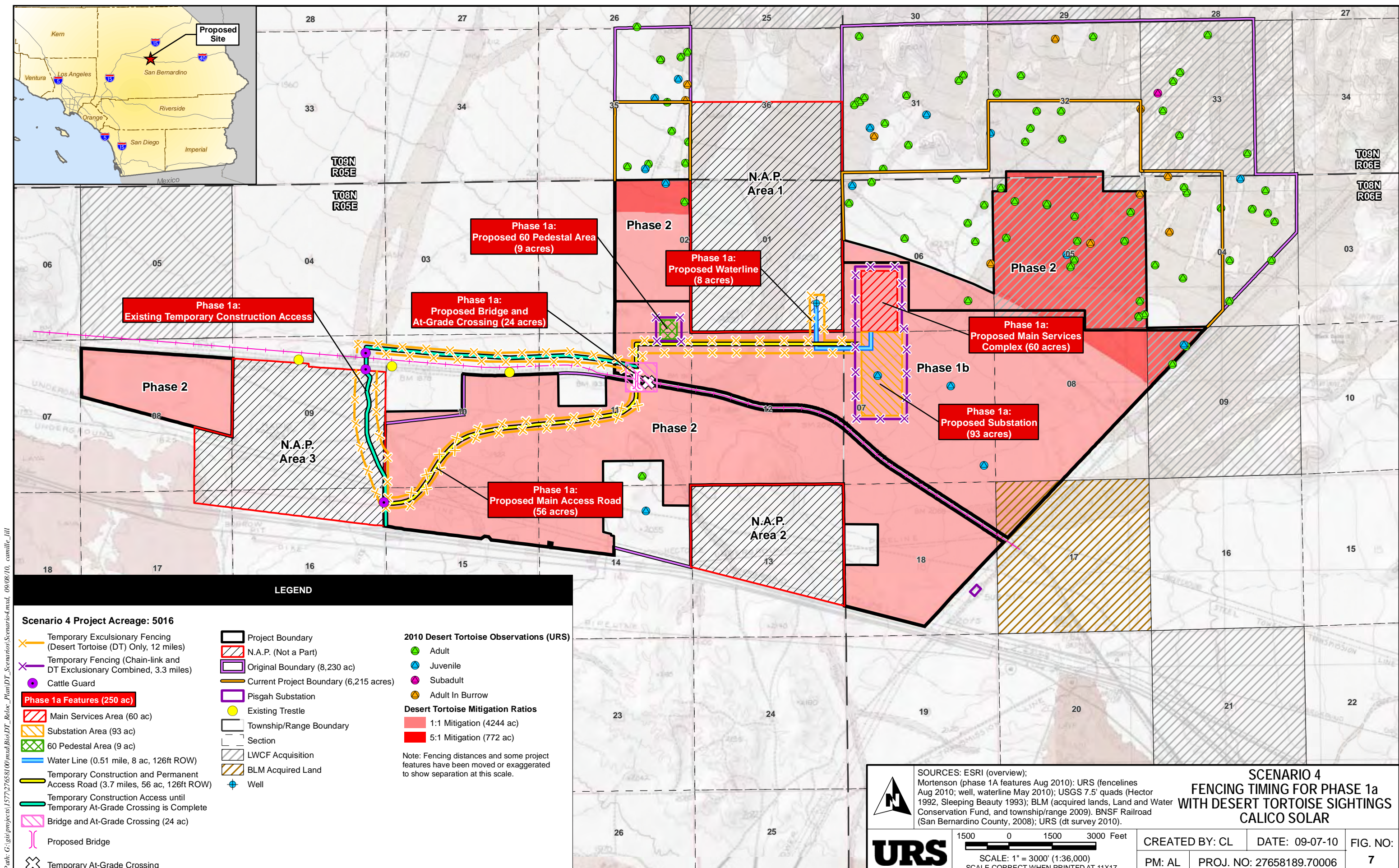
SOURCES: ESRI (overview); Mortenson (phase 1A features Aug 2010); URS (fencelines Aug 2010; well, waterline May 2010); USGS 7.5' quads (Hector 1992, Sleeping Beauty 1993); BLM (acquired lands, Land and Water Conservation Fund, and township/range 2009). BNSF Railroad (San Bernardino County, 2008); URS (dt survey 2010).



1500 0 1500 3000 Feet
 SCALE: 1" = 3000' (1:36,000)
 SCALE CORRECT WHEN PRINTED AT 11X17

**SCENARIO 3
 FENCING TIMING FOR PHASE 1a
 WITH DESERT TORTOISE BURROWS
 CALICO SOLAR**

CREATED BY: CL DATE: 09-07-10 FIG. NO:
 PM: AL PROJ. NO: 27658189.70006 6



Path: G:\gis\projects\1577276581\00\mxd\Bio\DT_Reloc_Plan\DT_Scenarios\Scenario4.mxd_09/08/10_cantille_lill


Scenario 4 Project Acreage: 5016

- ✂ Temporary Exclusionary Fencing (Desert Tortoise (DT) Only, 12 miles)
- ✂ Temporary Fencing (Chain-link and DT Exclusionary Combined, 3.3 miles)
- Cattle Guard
- Phase 1a Features (250 ac)**
- ▨ Main Services Area (60 ac)
- ▨ Substation Area (93 ac)
- ▨ 60 Pedestal Area (9 ac)
- Water Line (0.51 mile, 8 ac, 126ft ROW)
- Temporary Construction and Permanent Access Road (3.7 miles, 56 ac, 126ft ROW)
- Temporary Construction Access until Temporary At-Grade Crossing is Complete
- Bridge and At-Grade Crossing (24 ac)
- Proposed Bridge
- ✂ Temporary At-Grade Crossing

- ▭ Project Boundary
- ▨ N.A.P. (Not a Part)
- ▭ Original Boundary (8,230 ac)
- Current Project Boundary (6,215 acres)
- ▭ Pisgah Substation
- Existing Trestle
- ▭ Township/Range Boundary
- ▭ Section
- ▨ LWCF Acquisition
- ▨ BLM Acquired Land
- Well

- 2010 Desert Tortoise Observations (URS)**
- Adult
 - Juvenile
 - Subadult
 - Adult In Burrow
- Desert Tortoise Mitigation Ratios**
- ▨ 1:1 Mitigation (4244 ac)
 - ▨ 5:1 Mitigation (772 ac)

Note: Fencing distances and some project features have been moved or exaggerated to show separation at this scale.



URS

SOURCES: ESRI (overview); Mortenson (phase 1A features Aug 2010); URS (fencelines Aug 2010; well, waterline May 2010); USGS 7.5' quads (Hector 1992, Sleeping Beauty 1993); BLM (acquired lands, Land and Water Conservation Fund, and township/range 2009). BNSF Railroad (San Bernardino County, 2008); URS (dt survey 2010).

SCENARIO 4
FENCING TIMING FOR PHASE 1a
WITH DESERT TORTOISE SIGHTINGS
CALICO SOLAR

1500 0 1500 3000 Feet

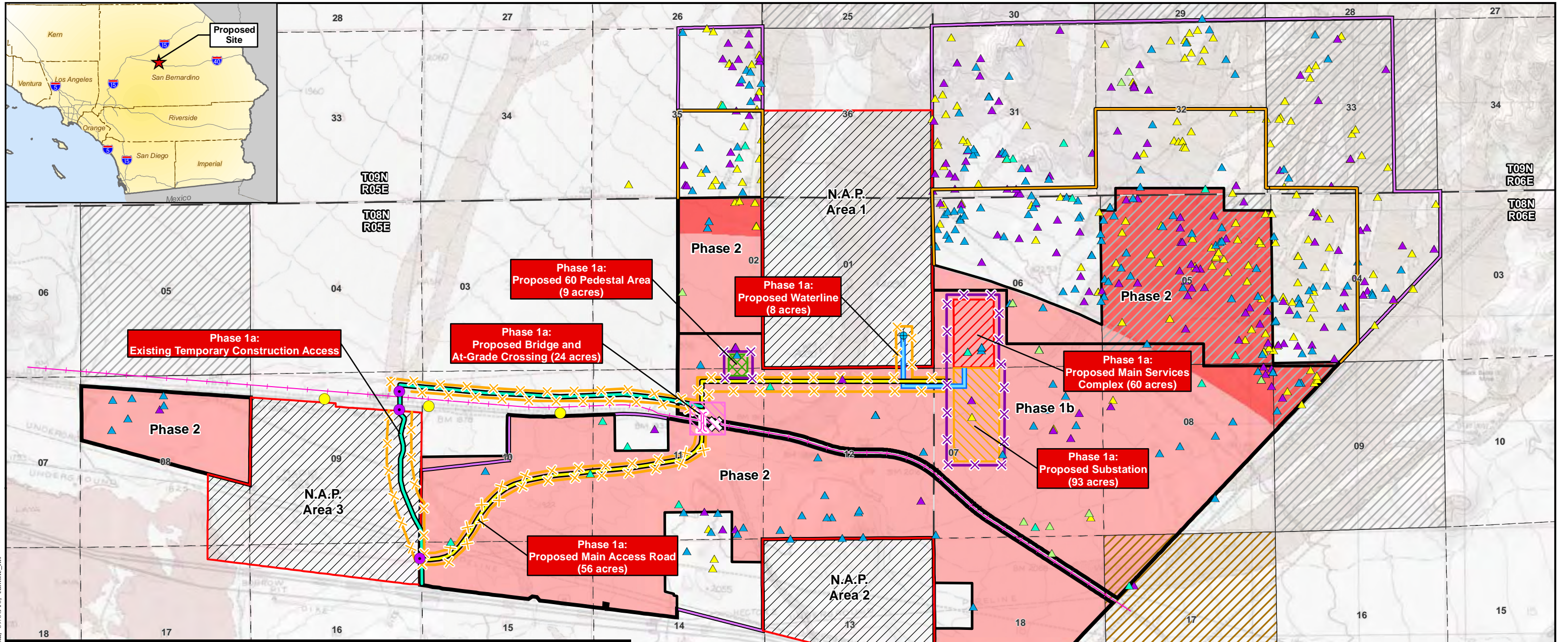
SCALE: 1" = 3000' (1:36,000)

SCALE CORRECT WHEN PRINTED AT 11X17

CREATED BY: CL DATE: 09-07-10

PM: AL PROJ. NO: 27658189.70006

FIG. NO: 7



Path: G:\gis\projects\1577276581\00\mxd\Biol\DT_Reloc_Plan\DT_Scenarios\Scenario4_burrows.mxd_09/08/10_camilite_hill

LEGEND

Scenario 4 Project Acreage: 5016

- Temporary Exclusionary Fencing (Desert Tortoise (DT) Only, 12 miles)
- Temporary Fencing (Chain-link and DT Exclusionary Combined, 3.3 miles)
- Cattle Guard
- Phase 1a Features (250 ac)**
- Main Services Area (60 ac)
- Substation Area (93 ac)
- 60 Pedestal Area (9 ac)
- Water Line (0.51 mile, 8 ac, 126ft ROW)
- Temporary Construction and Permanent Access Road (3.7 miles, 56 ac, 126ft ROW)
- Temporary Construction Access until Temporary At-Grade Crossing is Complete
- Bridge and At-Grade Crossing (24 ac)
- Proposed Bridge
- Temporary At-Grade Crossing

- Project Boundary
- N.A.P. (Not a Part)
- Original Boundary (8,230 ac)
- Current Project Boundary (6,215 acres)
- Pisgah Substation
- Existing Trestle
- Township/Range Boundary
- Section
- LWCF Acquisition
- BLM Acquired Land
- Well

Desert Tortoise Burrow Category

- 1
- 2
- 3
- 4
- 5

Desert Tortoise Mitigation Ratios

- 1:1 Mitigation (4244 ac)
- 5:1 Mitigation (772 ac)

Note: Fencing distances and some project features have been moved or exaggerated to show separation at this scale.



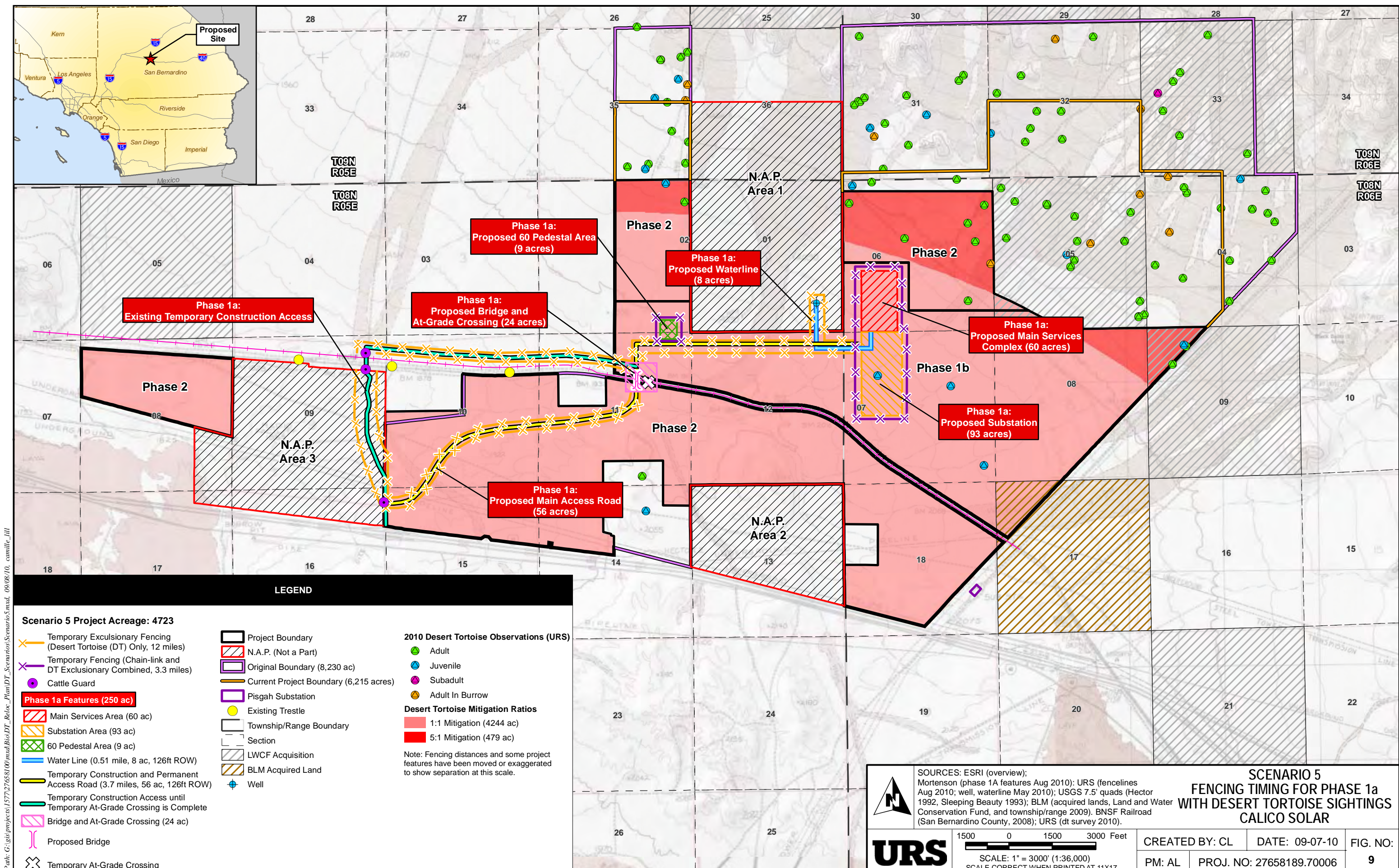
SOURCES: ESRI (overview); Mortenson (phase 1A features Aug 2010); URS (fencelines Aug 2010; well, waterline May 2010); USGS 7.5' quads (Hector 1992, Sleeping Beauty 1993); BLM (acquired lands, Land and Water Conservation Fund, and township/range 2009). BNSF Railroad (San Bernardino County, 2008); URS (dt survey 2010).



1500 0 1500 3000 Feet
 SCALE: 1" = 3000' (1:36,000)
 SCALE CORRECT WHEN PRINTED AT 11X17

**SCENARIO 4
 FENCING TIMING FOR PHASE 1a
 WITH DESERT TORTOISE BURROWS
 CALICO SOLAR**

CREATED BY: CL DATE: 09-07-10 FIG. NO:
 PM: AL PROJ. NO: 27658189.70006 8



Path: G:\gis\projects\1577276581\00\mxd\Bio\DT_Reloc_Plan\DT_Scenarios\Scenario5.mxd_09/08/10_cantille_lill


Scenario 5 Project Acreage: 4723

- ✂ Temporary Exclusionary Fencing (Desert Tortoise (DT) Only, 12 miles)
- ✂ Temporary Fencing (Chain-link and DT Exclusionary Combined, 3.3 miles)
- Cattle Guard
- Phase 1a Features (250 ac)**
- ▨ Main Services Area (60 ac)
- ▨ Substation Area (93 ac)
- ▨ 60 Pedestal Area (9 ac)
- Water Line (0.51 mile, 8 ac, 126ft ROW)
- Temporary Construction and Permanent Access Road (3.7 miles, 56 ac, 126ft ROW)
- Temporary Construction Access until Temporary At-Grade Crossing is Complete
- Bridge and At-Grade Crossing (24 ac)
- Proposed Bridge
- ✂ Temporary At-Grade Crossing

- ▭ Project Boundary
- ▨ N.A.P. (Not a Part)
- ▭ Original Boundary (8,230 ac)
- Current Project Boundary (6,215 acres)
- ▭ Pisgah Substation
- Existing Trestle
- ▭ Township/Range Boundary
- ▭ Section
- ▨ LWCF Acquisition
- ▨ BLM Acquired Land
- Well

- 2010 Desert Tortoise Observations (URS)**
- Adult
 - Juvenile
 - Subadult
 - Adult In Burrow
- Desert Tortoise Mitigation Ratios**
- ▨ 1:1 Mitigation (4244 ac)
 - ▨ 5:1 Mitigation (479 ac)

Note: Fencing distances and some project features have been moved or exaggerated to show separation at this scale.



URS

SOURCES: ESRI (overview); Mortenson (phase 1A features Aug 2010); URS (fencelines Aug 2010; well, waterline May 2010); USGS 7.5' quads (Hector 1992, Sleeping Beauty 1993); BLM (acquired lands, Land and Water Conservation Fund, and township/range 2009). BNSF Railroad (San Bernardino County, 2008); URS (dt survey 2010).

SCENARIO 5
FENCING TIMING FOR PHASE 1a
WITH DESERT TORTOISE SIGHTINGS
CALICO SOLAR

1500 0 1500 3000 Feet

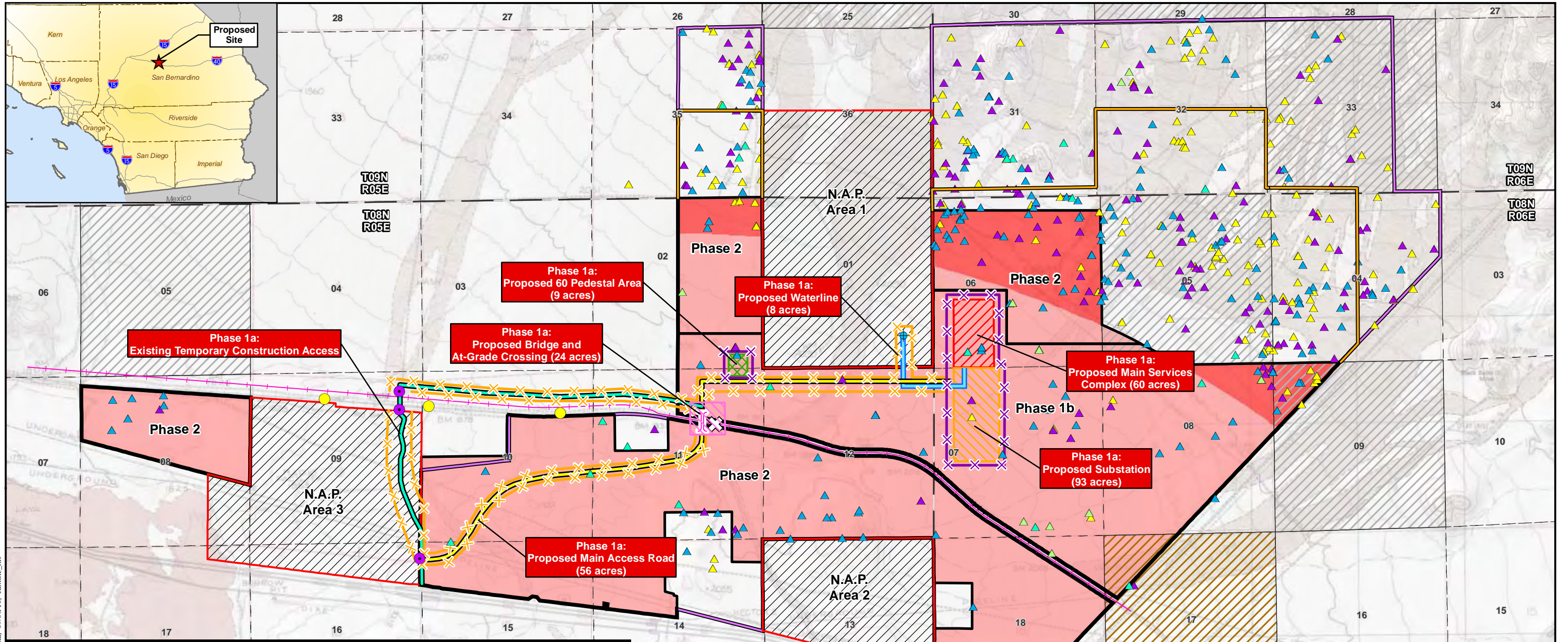
SCALE: 1" = 3000' (1:36,000)

SCALE CORRECT WHEN PRINTED AT 11X17

CREATED BY: CL DATE: 09-07-10

PM: AL PROJ. NO: 27658189.70006

FIG. NO: 9



Path: G:\gis\projects\1577276581\00\mxd\Bio\DT_Reloc_Plan\DT_Scenarios\Scenario5_barrows.mxd_09/08/10_camilie_hill

LEGEND

Scenario 5 Project Acreage: 4723

- ✂ Temporary Exclusionary Fencing (Desert Tortoise (DT) Only, 12 miles)
- ✂ Temporary Fencing (Chain-link and DT Exclusionary Combined, 3.3 miles)
- Cattle Guard
- Phase 1a Features (250 ac)**
- ▨ Main Services Area (60 ac)
- ▨ Substation Area (93 ac)
- ▨ 60 Pedestal Area (9 ac)
- Water Line (0.51 mile, 8 ac, 126ft ROW)
- Temporary Construction and Permanent Access Road (3.7 miles, 56 ac, 126ft ROW)
- Temporary Construction Access until Temporary At-Grade Crossing is Complete
- Bridge and At-Grade Crossing (24 ac)
- Proposed Bridge
- ✂ Temporary At-Grade Crossing

- ▭ Project Boundary
- ▨ N.A.P. (Not a Part)
- ▭ Original Boundary (8,230 ac)
- Current Project Boundary (6,215 acres)
- ▭ Pisgah Substation
- Existing Trestle
- ▭ Township/Range Boundary
- ▭ Section
- ▨ LWCF Acquisition
- ▨ BLM Acquired Land
- Well

Desert Tortoise Burrow Category

- ▲ 1
- ▲ 2
- ▲ 3
- ▲ 4
- ▲ 5

Desert Tortoise Mitigation Ratios

- ▨ 1:1 Mitigation (4244 ac)
- ▨ 5:1 Mitigation (479 ac)

Note: Fencing distances and some project features have been moved or exaggerated to show separation at this scale.

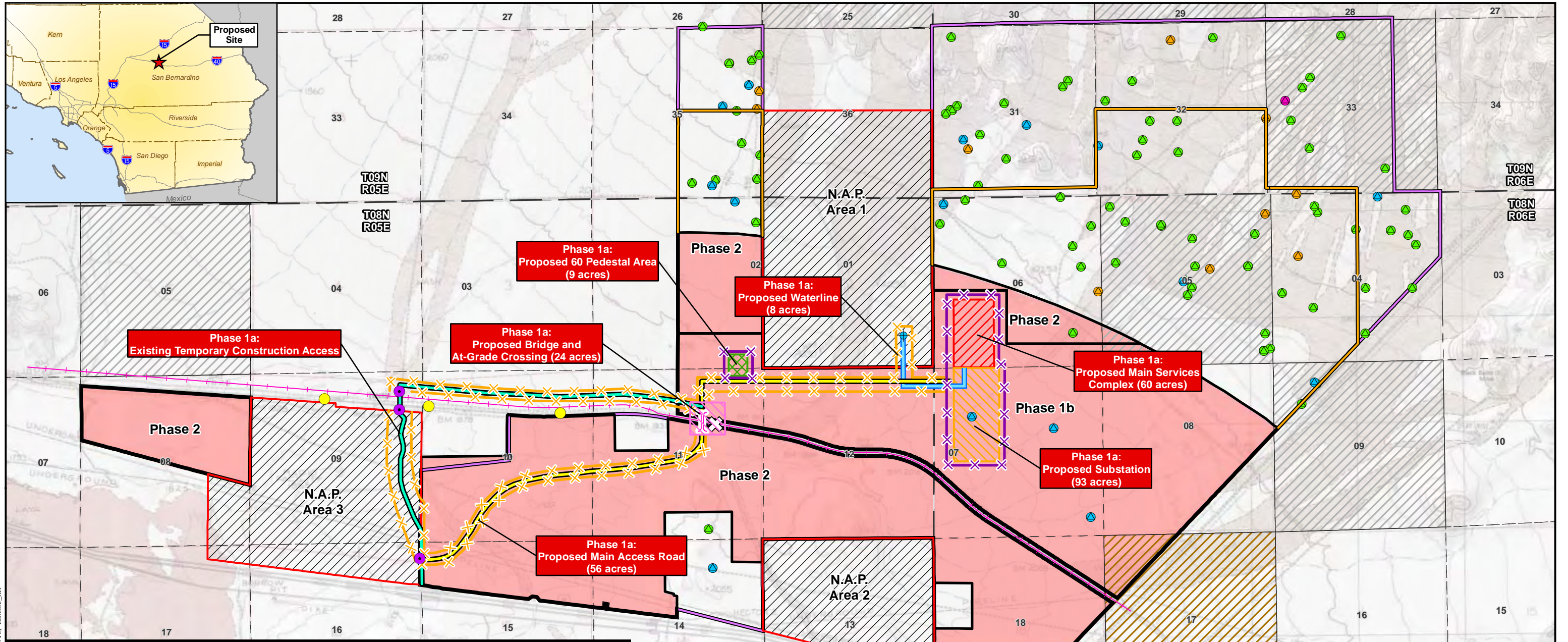


SOURCES: ESRI (overview); Mortenson (phase 1A features Aug 2010); URS (fencelines Aug 2010; well, waterline May 2010); USGS 7.5' quads (Hector 1992, Sleeping Beauty 1993); BLM (acquired lands, Land and Water Conservation Fund, and township/range 2009). BNSF Railroad (San Bernardino County, 2008); URS (dt survey 2010).

1500 0 1500 3000 Feet
 SCALE: 1" = 3000' (1:36,000)
 SCALE CORRECT WHEN PRINTED AT 11X17

**SCENARIO 5
 FENCING TIMING FOR PHASE 1a
 WITH DESERT TORTOISE BURROWS
 CALICO SOLAR**

CREATED BY: CL DATE: 09-07-10 FIG. NO:
 PM: AL PROJ. NO: 27658189.70006 10



LEGEND

Scenario 6 Project Acreage: 4244

- Temporary Excursionary Fencing (Desert Tortoise (DT) Only, 12 miles)
- Temporary Fencing (Chain-link and DT Exclusionary Combined, 3.3 miles)
- Cattle Guard

Phase 1a Features (250 ac)

- Main Services Area (60 ac)
- Substation Area (93 ac)
- 60 Pedestal Area (9 ac)
- Water Line (0.51 mile, 8 ac, 126ft ROW)
- Temporary Construction and Permanent Access Road (3.7 miles, 56 ac, 126ft ROW)
- Temporary Construction Access until Temporary At-Grade Crossing is Complete
- Bridge and At-Grade Crossing (24 ac)
- Proposed Bridge
- Temporary At-Grade Crossing

- Project Boundary
- N.A.P. (Not a Part)
- Original Boundary (8,230 ac)
- Current Project Boundary (6,215 acres)
- Pisgah Substation
- Existing Trestle
- Township/Range Boundary
- Section
- LWCF Acquisition
- BLM Acquired Land
- Well

2010 Desert Tortoise Observations (URS)

- Adult
- Juvenile
- Subadult
- Adult In Burrow

Desert Tortoise Mitigation Ratios

- 1:1 Mitigation (4244 ac)

Note: Fencing distances and some project features have been moved or exaggerated to show separation at this scale.

SCENARIO 6 FENCING TIMING FOR PHASE 1a WITH DESERT TORTOISE SIGHTINGS CALICO SOLAR

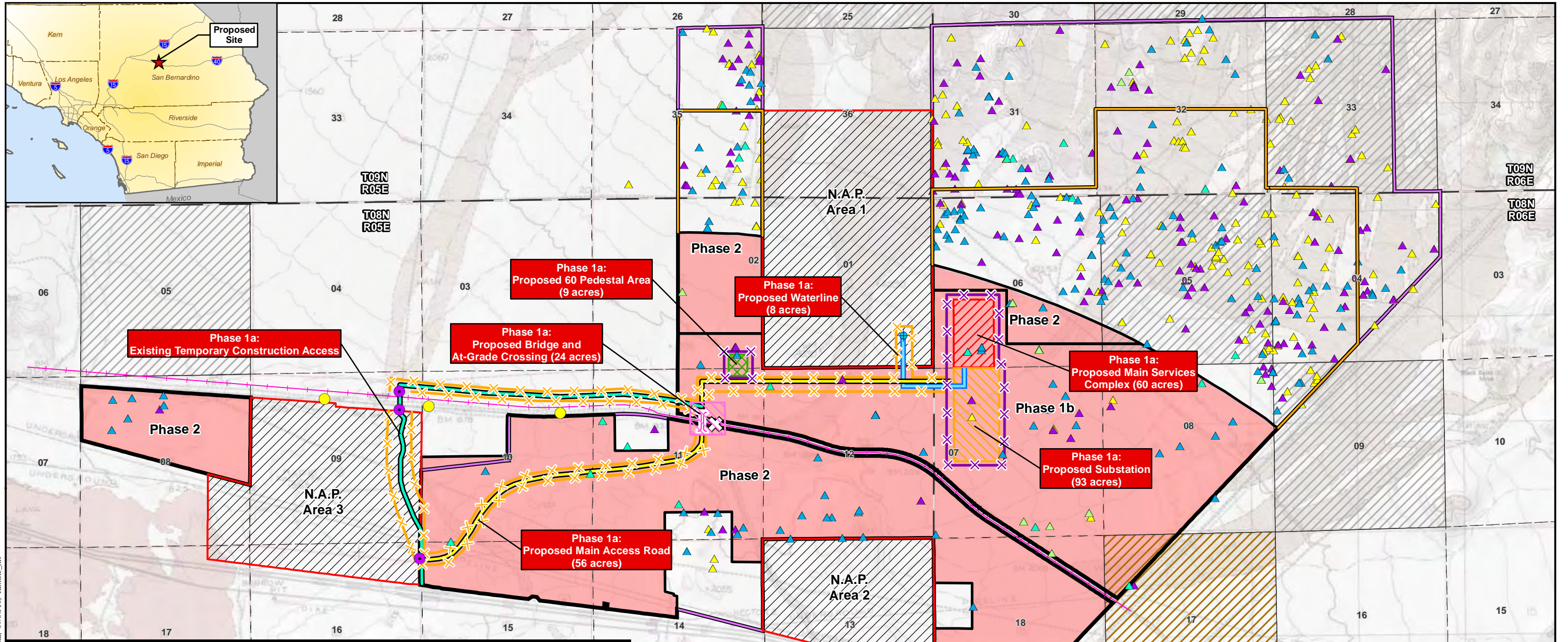
SOURCES: ESRI (overview); Mortenson (phase 1A features Aug 2010); URS (fencelines Aug 2010; well, waterline May 2010); USGS 7.5' quads (Hector 1992, Sleeping Beauty 1993); BLM (acquired lands, Land and Water Conservation Fund, and township/range 2009). BNSF Railroad (San Bernardino County, 2008); URS (dt survey 2010).

UR S

1500 0 1500 3000 Feet
SCALE: 1" = 3000' (1:36,000)
SCALE CORRECT WHEN PRINTED AT 11X17

CREATED BY: CL	DATE: 09-07-10	FIG. NO:
PM: AL	PROJ. NO: 27658189.70006	11

Path: G:\gis\projects\1577276581\00\mxd\Bio\DT_Reloc_Plan\DT_Scenarios\Scenario6.mxd_09/08/10_cantille_111



Scenario 6 Project Acreage: 4244

<ul style="list-style-type: none"> Temporary Excursionary Fencing (Desert Tortoise (DT) Only, 12 miles) Temporary Fencing (Chain-link and DT Exclusionary Combined, 3.3 miles) Cattle Guard 	<ul style="list-style-type: none"> Phase 1a Features (250 ac) <ul style="list-style-type: none"> Main Services Area (60 ac) Substation Area (93 ac) 60 Pedestal Area (9 ac) Water Line (0.51 mile, 8 ac, 126ft ROW) Temporary Construction and Permanent Access Road (3.7 miles, 56 ac, 126ft ROW) Temporary Construction Access until Temporary At-Grade Crossing is Complete Bridge and At-Grade Crossing (24 ac) Proposed Bridge Temporary At-Grade Crossing 	<ul style="list-style-type: none"> Project Boundary N.A.P. (Not a Part) Original Boundary (8,230 ac) Current Project Boundary (6,215 acres) Pisgah Substation Existing Trestle Township/Range Boundary Section LWCF Acquisition BLM Acquired Land Well 	<p>Desert Tortoise Burrow Category</p> <ul style="list-style-type: none"> 1 2 3 4 5 <p>Desert Tortoise Mitigation Ratios</p> <ul style="list-style-type: none"> 1:1 Mitigation (4244 ac) <p>Note: Fencing distances and some project features have been moved or exaggerated to show separation at this scale.</p>
---	--	--	--

URS

SOURCES: ESRI (overview); Mortenson (phase 1A features Aug 2010); URS (fencelines Aug 2010; well, waterline May 2010); USGS 7.5' quads (Hector 1992, Sleeping Beauty 1993); BLM (acquired lands, Land and Water Conservation Fund, and township/range 2009). BNSF Railroad (San Bernardino County, 2008); URS (dt survey 2010).

SCENARIO 6
FENCING TIMING FOR PHASE 1a
WITH DESERT TORTOISE BURROWS
CALICO SOLAR

SCALE: 1" = 3000' (1:36,000)
SCALE CORRECT WHEN PRINTED AT 11X17

CREATED BY: CL	DATE: 09-07-10	FIG. NO:
PM: AL	PROJ. NO: 27658189.70006	12

Path: G:\gis\projects\1577276581\00\mxd\Bio\DT_Reloc_Plan\DT_Scenarios\Scenario6_burrows.mxd_09/08/10_camilie_hill

Desert Tortoise Detailed Charts

Remaining Desert Tortoise For Each Scenario								
	Adult*	Juvenile	Subadult	Burrow Class 1	Burrow Class 2	Burrow Class 3	Burrow Class 4	Burrow Class 5
Scenario 1	38	7	0	82	77	122	14	8
Scenario 2	33	7	0	62	62	104	14	8
Scenario 3	28	6	0	54	57	98	12	8
Scenario 4	22	6	0	48	47	75	12	8
Scenario 5	10	5	0	21	31	75	10	8
Scenario 6	1	3	0	4	14	44	10	7

Excluded Desert Tortoise For Each Scenario								
	Adult*	Juvenile	Subadult	Burrow Class 1	Burrow Class 2	Burrow Class 3	Burrow Class 4	Burrow Class 5
Scenario 1	10	2	0	13	14	14	1	0
Scenario 2	15	2	0	33	29	32	1	0
Scenario 3	20	3	0	41	34	38	3	0
Scenario 4	26	3	0	47	44	61	3	0
Scenario 5	38	4	0	42	60	61	5	0
Scenario 6	47	6	0	91	77	92	5	1

Desert Tortoise Data By Section									
	Adult*	Juvenile	Subadult	Burrow Class 1	Burrow Class 2	Burrow Class 3	Burrow Class 4	Burrow Class 5	Acreage
High Quality Area from Section 4	5	0	0	20	15	18	0	0	284
High Quality Area from Section 35	5	1	0	8	5	6	2	0	127
High Quality Area from Section 6	6	0	0	6	10	23	0	0	302
High Quality Area from Section 5	18	1	0	1	26	23	2	0	595

* Adult category includes adults sighted in burrows, which are shown separately on maps

This Page Intentionally Left Blank



**BEFORE THE ENERGY RESOURCES CONSERVATION AND DEVELOPMENT
COMMISSION OF THE STATE OF CALIFORNIA
1516 NINTH STREET, SACRAMENTO, CA 95814
1-800-822-6228 – WWW.ENERGY.CA.GOV**

APPLICATION FOR CERTIFICATION

For the CALICO SOLAR (Formerly SES Solar One)

Docket No. 08-AFC-13

**PROOF OF SERVICE
(Revised 8/9/10)**

APPLICANT

Felicia Bellows
Vice President of Development
& Project Manager
Tessera Solar
4800 North Scottsdale Road,
#5500
Scottsdale, AZ 85251
felicia.bellows@tesseractosolar.com

CONSULTANT

Angela Leiba
AFC Project Manager
URS Corporation
1615 Murray Canyon Rd.,
#1000
San Diego, CA 92108
angela_leiba@URSCorp.com

APPLICANT'S COUNSEL

Allan J. Thompson
Attorney at Law
21 C Orinda Way #314
Orinda, CA 94563
allanori@comcast.net

Ella Foley Gannon, Partner
Bingham McCutchen, LLP
Three Embarcadero Center
San Francisco, CA 94111
ella.gannon@bingham.com

INTERESTED AGENCIES

California ISO
e-recipient@caiso.com

Jim Stobaugh
BLM – Nevada State Office
P.O. Box 12000
Reno, NV 89520
jim_stobaugh@blm.gov

Rich Rotte, Project Manager
Bureau of Land Management
Barstow Field Office
2601 Barstow Road
Barstow, CA 92311
richard_rotte@blm.gov

Becky Jones
California Department of
Fish & Game
36431 41st Street East
Palmdale, CA 93552
dfgpalm@adelphia.net

INTERVENORS

County of San Bernardino
Ruth E. Stringer,
County Counsel
Bart W. Brizzee,
Deputy County Counsel
385 N. Arrowhead Avenue,
4th Floor
San Bernardino, CA 92415-
bbrizzee@cc.sbcounty.gov

California Unions for Reliable
Energy (CURE)
c/o: Loulena A. Miles,
Marc D. Joseph
Adams Broadwell Joseph
& Cardozo
601 Gateway Boulevard, Ste. 1000
South San Francisco, CA 94080
lmiles@adamsbroadwell.com

Defenders of Wildlife
Joshua Basofin
1303 J Street, Suite 270
Sacramento, California 95814
e-mail service preferred
jbasofin@defenders.org

Society for the Conservation of
Bighorn Sheep
Bob Burke & Gary Thomas
P.O. Box 1407
Yermo, CA 92398
cameracoordinator@sheepsociety.com

Basin and Range Watch
Laura Cunningham &
Kevin Emmerich
P.O. Box 70
Beatty, NV 89003
atomicoadranch@netzero.net

INTERVENORS CONT.

Patrick C. Jackson
600 N. Darwood Avenue
San Dimas, CA 91773
e-mail service preferred
ochsjack@earthlink.net

Gloria D. Smith, Senior Attorney
***Travis Ritchie**
Sierra Club
85 Second Street, Second floor
San Francisco, CA 94105
gloria.smith@sierraclub.org
travis.ritchie@sierraclub.org

Newberry Community
Service District
Wayne W. Weierbach
P.O. Box 206
Newberry Springs, CA 92365
newberryCSD@gmail.com

Cynthia Lea Burch
Steven A. Lamb
Anne Alexander
Katten Muchin Rosenman LLP
2029 Century Park East,
Ste. 2700
Los Angeles, CA 90067-3012
Cynthia.burch@kattenlaw.com
Steven.lamb@kattenlaw.com
Anne.alexander@kattenlaw.com

ENERGY COMMISSION

ANTHONY EGGERT
Commissioner and Presiding Member
aeggert@energy.state.ca.us

JEFFREY D. BYRON
Commissioner and Associate Member
jbyron@energy.state.ca.us

Paul Kramer
Hearing Officer
pkramer@energy.state.ca.us

Lorraine White, Adviser to
Commissioner Eggert
e-mail service preferred
lwhite@energy.state.ca.us

Kristy Chew, Adviser to
Commissioner Byron
e-mail service preferred
kchew@energy.state.ca.us

Caryn Holmes
Staff Counsel
cholmes@energy.state.ca.us

Steve Adams
Co-Staff Counsel
sadams@energy.state.ca.us

Christopher Meyer
Project Manager
cmeyer@energy.state.ca.us

Jennifer Jennings
Public Adviser
e-mail service preferred
publicadviser@energy.state.ca.us

DECLARATION OF SERVICE

I, Darin Neufeld, declare that on September 8, 2010, I served and filed copies of the attached Applicant's Submittal of Reduced Project Boundary Scenarios dated September 8, 2010. The original document, filed with the Docket Unit, is accompanied by a copy of the most recent Proof of Service list, located on the web page for this project at: [www.energy.ca.gov/sitingcases/solarone].

The documents have been sent to both the other parties in this proceeding (as shown on the Proof of Service list) and to the Commission's Docket Unit, in the following manner:

(Check all that Apply)

FOR SERVICE TO ALL OTHER PARTIES:

- sent electronically to all email addresses on the Proof of Service list;
- by personal delivery;
- by delivering on this date, for mailing with the United States Postal Service with first-class postage thereon fully prepaid, to the name and address of the person served, for mailing that same day in the ordinary course of business; that the envelope was sealed and placed for collection and mailing on that date to those addresses **NOT** marked "email preferred."

AND

FOR FILING WITH THE ENERGY COMMISSION:

- sending an original paper copy and one electronic copy, mailed and emailed respectively, to the address below (*preferred method*);

OR

- depositing in the mail an original and 12 paper copies, as follows:

CALIFORNIA ENERGY COMMISSION

Attn: Docket No. 08-AFC-13
1516 Ninth Street, MS-4
Sacramento, CA 95814-5512
docket@energy.state.ca.us

I declare under penalty of perjury that the foregoing is true and correct, that I am employed in the county where this mailing occurred, and that I am over the age of 18 years and not a party to the proceeding.

Original Signed By
Darin Neufeld