

Mr. Stobaugh,

Please consider the following my submission to the scoping process for the Tessera Solar 1 [08-AFC-13] development project.

1. In the vicinity of this proposed project is a guzzler owned by the California Department of Fish and Game. The boundary and proposed fencing of Solar 1 will eliminate vehicular access to this guzzler for maintenance and repair actions.

The inability to maintain or repair this guzzler will as well harm or destroy wildlife in this area.

Should you not already know this information I can give you contacts in the Department for detailed information as to which roads are used for access. It is my request that you make some kind of allowance in the plans to accommodate this access as needed.

2. What design criteria will be utilized to continue to allow wildlife to travel/migrate through the area of Solar 1 being fenced? This question will become of even greater concern should Solar 3 be built.

3. If you look at the BLM WEMO map (FEIS_pr_55) which is included with this email, you'll see that the road network in this area has been documented. Should the project be built, not only will access to the guzzler be blocked, wildlife habitat will be lost or negatively affected, but as well a large network of roads and access to certain parts of the Cady mountains will be lost. This loss will not only cause wildlife to suffer but as well will eliminate recreation opportunities in the area affected. My question and request is, "How will Tessera and the government agencies involved mitigate these losses?"

4. SOME POINTS TO CONSIDER AND QUESTIONS WITH YOUR PROJECT:

-Continued development in this area of solar projects will block an even larger area from access by wildlife and citizens who use this area.

-The appearance of the area will be devastated for the life of the project, and then many years to follow due to the extensive ground disruption which will occur in placing the SunCatchers, their ancillary facilities, and then accessing these with vehicles for maintenance and repair. Will this damage be repaired at the end of the project?

-Once again, for the sake of generating electricity for people living hundreds of miles away will another part of the desert be destroyed and taken from those who enjoy and respect it. Those people using the electricity may never see the destruction, suffer the loss, or appreciate the beauty lost over this project.

-What will be done to mitigate the loss? At a minimum I would like to suggest a corridor be left open between Solar 1 and Solar 3 for animal and vehicle travel.

-Can the proposed boundaries be set back in a manner allowing for vehicular travel along the fence lines of the project in order to connect routes which have been isolated?

Thank you,

David Beaumont
Camarillo, CA

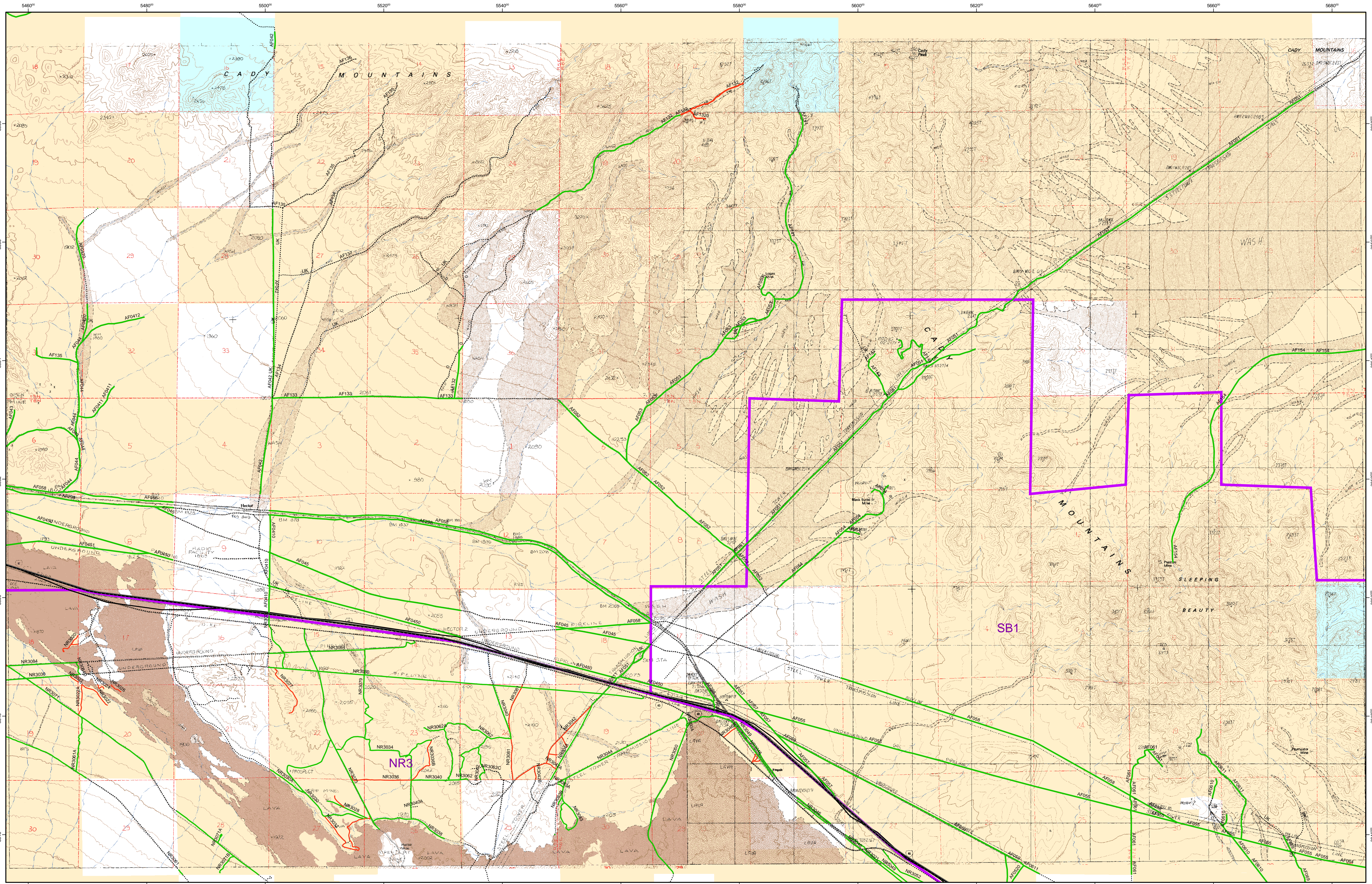
DOCKET

08-AFC-13

DATE _____

RECD. July 20 2009

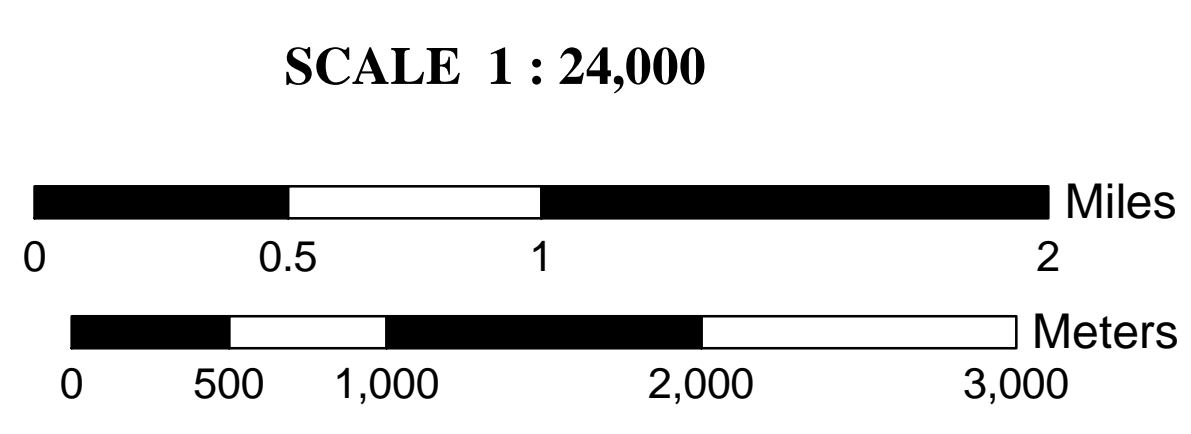
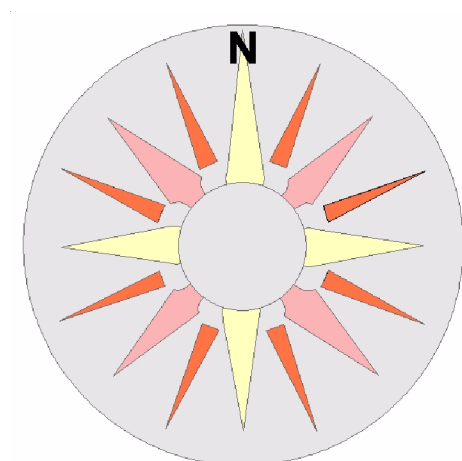
Proposed Action - West Mojave Route Designation Program



Designations apply to BLM lands only

Coordinates UTM NAD83, Zone 11
 Cartography N. Pratin
 Date July 30, 2004

Data Sources:
 Topo map images: USGS
 Land Status: BLM State Office
 Wilderness: BLM State Office
 All Other: BLM CDD



Legend		Land Ownership	
	Highways		BLM
	Major Roads		National Park Service
	MAZ Boundaries		Military
	WM Plan Boundary		State Lands
	BLM Wilderness		County/City/Regional
	ACECs		Private
	Open Areas		
	Proposed Designations - Open		
	Proposed Designations - Closed		
	Proposed Designations - Limited		
	Proposed Designations - Public Road		
	Proposed Designations - Undesignated or Unknown		