

CALIFORNIA ENERGY COMMISSION1516 Ninth Street, MS-15
Sacramento, California 95814Main website: www.energy.ca.gov**DOCKETED**
11-AFC-4

TN # 68342

NOV. 02 2012

**Notice of Public Workshop for the
Rio Mesa Solar Electric Generating Facility (11-AFC-04)**

The workshop will be held on:

WEDNESDAY, November 14, 2012
Starting at 8:30 AM**University of California at Riverside, Palm Desert Campus**
75080 Frank Sinatra Drive, "B" Building, Rooms B114 - B117
Palm Desert, CA 92211
(wheelchair accessible, map attached)**To participate in the meeting by telephone:**
WebEx call-in toll-free number: 1-866-469-3239
Webex meeting number: 928 711 994
WebEx meeting password: meeting@830**Purpose**

The purpose of the workshop is to allow staff, the applicant, intervenors, interested agencies, and the public the opportunity to ask questions and comment on the Preliminary Staff Assessment (PSA) for the Rio Mesa SEGF project. The primary areas anticipated to be discussed are Biological Resources and Alternatives, however, other topic areas or issues related to staff review of the proposed project may also be discussed. All interested parties, interested agencies, and members of the public are invited to participate. Technical or schedule questions should be directed to Pierre Martinez, Energy Commission Project Manager, at (916) 651-3765, or by e-mail at pierre.martinez@energy.ca.gov.

Summary of the proposed Rio Mesa Solar Electric Generating Facility Project

As currently proposed, the Rio Mesa SEGF would comprise two solar fields and associated facilities encompassing a total of approximately 3,805 acres and would be located on the Palo Verde Mesa in Riverside County, California, approximately 13 miles southwest of the City of Blythe. If approved, the two power plants, solar fields, and associated facilities would be located on land leased from the Metropolitan Water District of Southern California. The project gen-tie line, emergency and construction electrical power supply line, and primary access road would be located on federal land administered by the U.S. Bureau of Land Management (BLM). If approved, each solar plant would generate 250 megawatts (MW), for a total net output of 500 MW and would use heliostats – elevated mirrors guided by a tracking system mounted on pylons – to focus the sun's rays on a receiver steam generator located atop a 750-foot tall solar power tower near the center of each solar field. Each solar plant would utilize approximately 85,000 heliostats.

Purpose of the Preliminary Staff Assessment

The PSA contains the California Energy Commission staff's independent, objective evaluation of the proposed Rio Mesa SEGF project. The PSA examines engineering, environmental, public health, and safety aspects of the proposed Rio Mesa SEGF project, based on the information provided by the applicant, government agencies, interested parties, intervenors, and other sources available at the time the PSA was prepared. PSA Part A, which was published on September 28, 2012, includes staff's environmental and engineering evaluation in the following areas: Air Quality, Hazardous Materials Management, Noise and Vibration, Public Health, Socioeconomics, Water Supply, Soil and Surface Water, Traffic and Transportation, Transmission Line Safety and Nuisance, Visual Resources, Waste Management, Worker Safety and Fire Protection, Facility Design, Geology and Paleontology, Efficiency, Reliability, and Transmission System Engineering. PSA Part B, which was published on October 15, 2012, contains staff's analysis on Alternatives, Biological Resources, Cultural Resources, and Land Use.

Participation

If you desire information on how to participate in the Energy Commission's review of the proposed project, please contact the Energy Commission's Public Adviser, at (916) 654-4489 or toll free in California, at (800) 822-6228. The Public Adviser's Office can also be contacted via email at publicadviser@energy.ca.gov.

To request special accommodations for those persons with disabilities, please contact Lou Quiroz, the Energy Commission's Equal Employment Opportunity Officer at (916) 654-5146 or via email at lou.quiroz@energy.ca.gov. For those persons with limited English knowledge, request interpreter services by contacting the Project Manager, Pierre Martinez, at (916) 651-3765.

If you wish to provide written comments on the project, please submit comments to the Energy Commission Dockets Unit. Please include the docket number 11-AFC-04 for the Rio Mesa SEGF project in the subject line or first paragraph of your comments. If you wish to submit comments electronically, please provide them in either Microsoft Word format or as a Portable Document Format (PDF) to docket@energy.ca.gov. Please include your name or organization's name in the file name. If you are preparing non-electronic written comments, please mail or hand deliver them to:

California Energy Commission
Dockets Unit, MS-4
Docket No. 11-AFC-04
1516 Ninth Street
Sacramento, CA 95814-5512

All written comments and materials filed with the Dockets Unit will become a part of the public record of the proceeding. Additionally, comments may be posted on the project website.

If you are unable to attend the workshop, written comments may be sent per the instructions above. You can subscribe to receive e-mail notification of all notices and announcements at <http://www.energy.ca.gov/listserves>. By being on this e-mail list, you

will receive all project related notices and documents pertaining to the project's evaluation and review.

The status of the project, an electronic copy of staff reports, copies of notices, and other relevant documents are also available on the Energy Commission's website at <http://www.energy.ca.gov/sitingcases/riomesa/index.html>.

News media inquiries should be directed to the Media and Communications Office at (916) 654-4989 or via email at mediaoffice@energy.ca.gov.

Sincerely,

Date:

11/2/2012

for



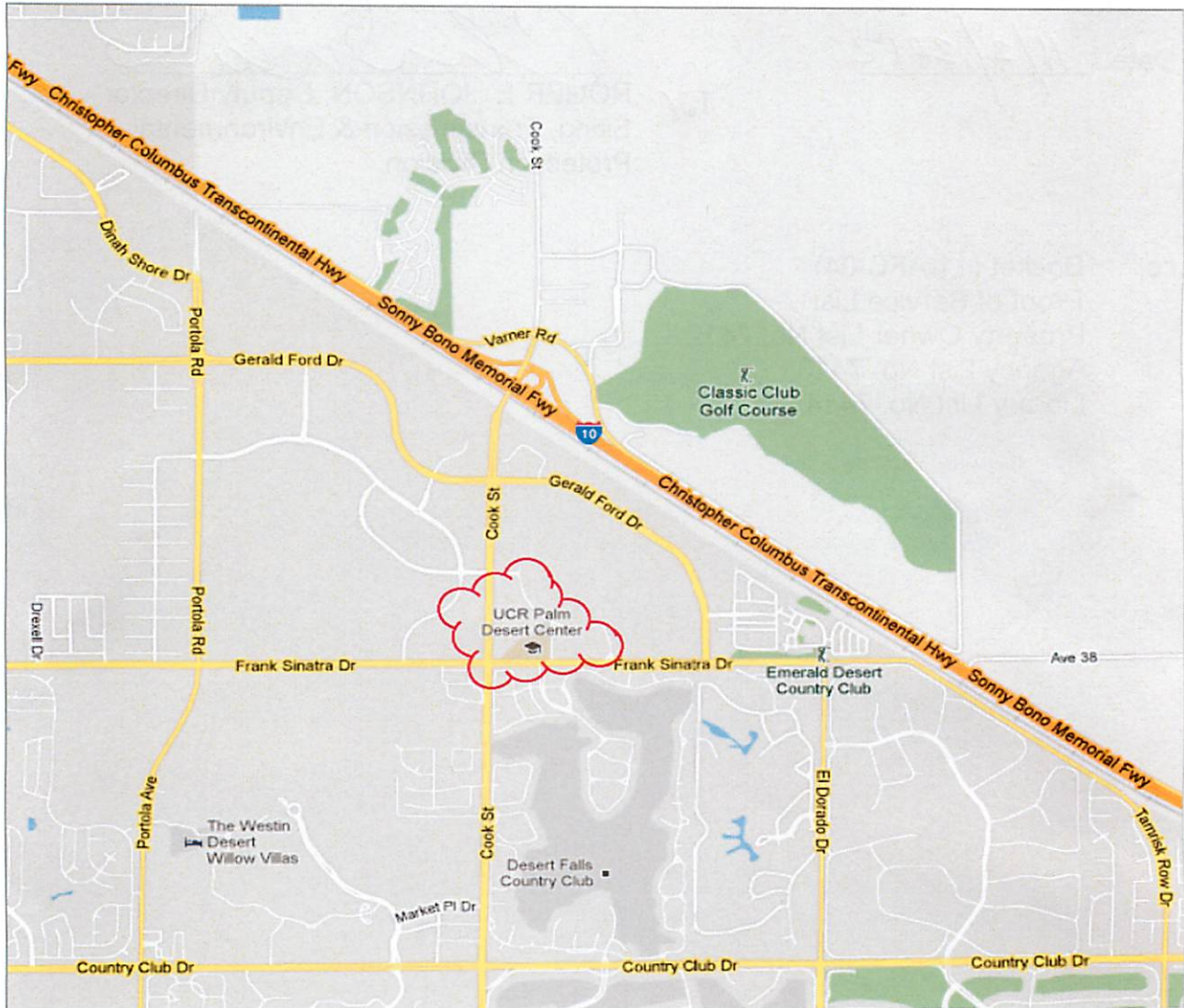
ROGER E. JOHNSON, Deputy Director
Siting, Transmission & Environmental
Protection Division

cc: Docket (11-AFC-04)
Proof of Service List
Property Owner List No. 7412
Agency List No. 7413
Library List No. 7414

**ENERGY COMMISSION PUBLIC WORKSHOP
Rio Mesa Solar Electric Generating Facility (11-AFC-04)**

**WEDNESDAY, November 14, 2012
Beginning at 8:30 AM**

**University of California at Riverside, Palm Desert Campus
75080 Frank Sinatra Drive, "B" Building, Rooms B114 - B117
Palm Desert, CA 92211
(wheelchair accessible, map attached)**



WebEx Call-in toll-free number: **1-866-469-3239**
Access code: **928 711 994**
Meeting Password (case sensitive): **meeting@830**
(please see attached instructions for WebEx)

PARTICIPATION IN THE
November 14, 2012
ENERGY COMMISSION PUBLIC WORKSHOP
Rio Mesa Solar Electric Generating Facility (11-AFC-04)

THROUGH WEBEX:

1. TELEPHONE ONLY (NO COMPUTER ACCESS):

- Call **1-866-469-3239** and when prompted enter **928 711 994**

If you have difficulty joining the meeting, please call the WebEx Technical Support number at **1-866-229-3239**. To see if your computer is compatible, visit <http://support.webex.com/support/systemrequirements>. Please be aware that the meeting's WebEx audio and on-screen activity may be recorded.

WebEx Call-in toll-free number: **1-866-469-3239**
WebEx Access code: **928 711 994**
WebEx Meeting Password (case sensitive): **meeting@830**

2. COMPUTER LOG-ON WITH A DIRECT PHONE NUMBER:

- Please go to <https://energy.webex.com> and enter **928 711 994**
- When prompted, enter your information and **meeting@830** (case sensitive)
- After you login, a prompt will appear on-screen for you to provide **your** phone number.
- In the **Number box**, type your area code and phone number and click **OK**.
You will receive a call back on your phone for the audio portion of the meeting.

3. COMPUTER LOG-ON FOR CALLERS WITH AN EXTENSION PHONE NUMBER, ETC:

- Please go to <https://energy.webex.com> and enter **928 711 994** and **meeting@830** (case sensitive)
- After you login, a prompt will ask for your phone number. Click **CANCEL**.
- Instead call **1-866-469-3239**. When prompted, enter **928 711 994** and your unique Attendee ID number which is listed in the top left area of your computer screen after you login.



**BEFORE THE ENERGY RESOURCES CONSERVATION AND DEVELOPMENT
COMMISSION OF THE STATE OF CALIFORNIA
1516 NINTH STREET, SACRAMENTO, CA 95814
1-800-822-6228 – WWW.ENERGY.CA.GOV**

**APPLICATION FOR CERTIFICATION FOR THE
RIO MESA SOLAR ELECTRIC
GENERATING FACILITY**

DOCKET NO. 11-AFC-04
PROOF OF SERVICE
(Revised 11/2/12)

APPLICANTS' AGENTS

BrightSource Energy, Inc.
Todd Stewart
Senior Director, Project Development
*Bradley Brownlow
Brad DeJean
Kwame Thompson
1999 Harrison Street, Suite 2150
Oakland, CA 94612
tstewart@brightsourceenergy.com
[*bbrownlow@brightsourceenergy.com](mailto:bbrownlow@brightsourceenergy.com)
bdejean@brightsourceenergy.com
kthompson@brightsourceenergy.com

APPLICANTS' CONSULTANTS

Grenier and Associates, Inc.
Andrea Grenier
1420 E. Roseville Parkway
Suite 140-377
Roseville, CA 95661
andrea@agrenier.com

URS Corporation
Angela Leiba
4225 Executive Square, Suite 1600
La Jolla, CA 92037
angela_leiba@urscorp.com

APPLICANTS' COUNSEL

Ellison, Schneider & Harris
Christopher T. Ellison
Brian S. Biering
2600 Capitol Avenue, Suite 400
Sacramento, CA 95816-5905
cte@eslawfirm.com
bsb@eslawfirm.com

INTERVENORS

Center for Biological Diversity
Lisa T. Belenky, Senior Attorney
351 California Street, Suite 600
San Francisco, CA 94104
lbelenky@biologicaldiversity.org

Center for Biological Diversity
Ileene Anderson
Public Lands Desert Director
PMB 447, 8033 Sunset Boulevard
Los Angeles, CA 90046
ianderson@biologicaldiversity.org

INTERESTED AGENCIES

Mojave Desert AQMD
Chris Anderson, Air Quality Engineer
14306 Park Avenue
Victorville, CA 92392-2310
canderson@mdaqmd.ca.gov

California ISO
e-recipient@caiso.com

Bureau of Land Management
Cedric Perry
Lynnette Elser
22835 Calle San Juan De Los Lagos
Moreno Valley, CA 92553
cperry@blm.gov
lelser@blm.gov

County of Riverside
Katherine Lind
Tiffany North
Office of Riverside County Counsel
3960 Orange Street, Suite 500
Riverside, CA 92501
klind@co.riverside.ca.us
tnorth@co.riverside.ca.us

**ENERGY COMMISSION –
DECISIONMAKERS**

CARLA PETERMAN
Commissioner and Presiding Member
carla.peterman@energy.ca.gov

KAREN DOUGLAS
Commissioner and Associate Member
karen.douglas@energy.ca.gov

Kenneth Celli
Hearing Adviser
ken.celli@energy.ca.gov

Eileen Allen
Commissioners' Technical
Advisor for Facility Siting
eileen.allen@energy.ca.gov

Jim Bartridge
Advisor to Presiding Member
jim.bartridge@energy.ca.gov

Galen Lemei
Advisor to Associate Member
galen.lemei@energy.ca.gov

Jennifer Nelson
Advisor to Associate Member
jennifer.nelson@energy.ca.gov

ENERGY COMMISSION STAFF

Pierre Martinez
Project Manager
pierre.martinez@energy.ca.gov

Lisa DeCarlo
Staff Counsel
lisa.decarlo@energy.ca.gov

**ENERGY COMMISSION –
PUBLIC ADVISER**

Jennifer Jennings
Public Adviser's Office
publicadviser@energy.ca.gov

DECLARATION OF SERVICE

I, Alicia Campos, declare that on **November 2, 2012**, I served and filed a copy of the attached document **Notice of Public Workshop for the Rio Mesa Solar Electric Generating Facility (11-AFC-04)**, dated **November 2, 2012**. This document is accompanied by the most recent Proof of Service list, located on the web page for this project at: <http://www.energy.ca.gov/sitingcases/riomesa/index.html>.

The document has been sent to the other parties in this proceeding (as shown on the Proof of Service list) and to the Commission's Docket Unit or Chief Counsel, as appropriate, in the following manner:

(Check all that Apply)

For service to all other parties:

- Served electronically to all e-mail addresses on the Proof of Service list;
- Served by delivering on this date, either personally, or for mailing with the U.S. Postal Service with first-class postage thereon fully prepaid, to the name and address of the person served, for mailing that same day in the ordinary course of business; that the envelope was sealed and placed for collection and mailing on that date to those addresses marked **"hard copy required"** or where no e-mail address is provided.

AND

For filing with the Docket Unit at the Energy Commission:

- by sending electronic copies to the e-mail address below (preferred method); **OR**
- by depositing an original and 12 paper copies in the mail with the U.S. Postal Service with first class postage thereon fully prepaid, as follows:

CALIFORNIA ENERGY COMMISSION – DOCKET UNIT
Attn: Docket No. 11-AFC-04
1516 Ninth Street, MS-4
Sacramento, CA 95814-5512
docket@energy.ca.gov

OR, if filing a Petition for Reconsideration of Decision or Order pursuant to Title 20, § 1720:

- Served by delivering on this date one electronic copy by e-mail, and an original paper copy to the Chief Counsel at the following address, either personally, or for mailing with the U.S. Postal Service with first class postage thereon fully prepaid:

California Energy Commission
Michael J. Levy, Chief Counsel
1516 Ninth Street MS-14
Sacramento, CA 95814
michael.levy@energy.ca.gov

I declare under penalty of perjury under the laws of the State of California that the foregoing is true and correct, that I am employed in the county where this mailing occurred, and that I am over the age of 18 years and not a party to the proceeding.

Originally Signed By:

Alicia Campos
Siting, Transmission and Environmental Protection Division