

**DOCKET**

**11-AFC-4**

DATE MAY 24 2012

RECD. MAY 29 2012



**BrightSource**

**RIO MESA SOLAR  
ELECTRIC GENERATING FACILITY  
PROJECT ENVIRONMENTAL ENHANCEMENT**

May 24, 2012

# Rio Mesa Solar – Project Enhancement Overview

---

## ▪ Project Description

- Configuration 

Original: 3 250 MW (net) Units; 1 Unit on BLM land, 2 Units mostly on Private Land  
New: 2 250MW Units (net) solely on Private Land
- Project Site 

Original: ~5900 developed acres including Gen-tie and access roads  
New: ~4070 developed acres including Gen-tie and access roads
- Common Area 

Move all permanent facilities to west of WAPA T-line. Only temporary construction facilities will be located to the west of the WAPA lines.
- Gen Tie Line 

Routing to be on west of WAPA lines, conductors will be sized for 500 MW generation
- Land Use (New) 

MWD (Private) Land: Solar Generation, Switchyard, Access Road  
BLM (Public) Land: Gen-tie, Backup/Construction Power line, and Access Roads
- Zoning: 

MWD Land: Compatible per Board Policy B-29  
BLM Land: In compliance though will still require Plan Use Amendment

# Rio Mesa Solar – Specifics of Proposal

---

Why we are proposing this:

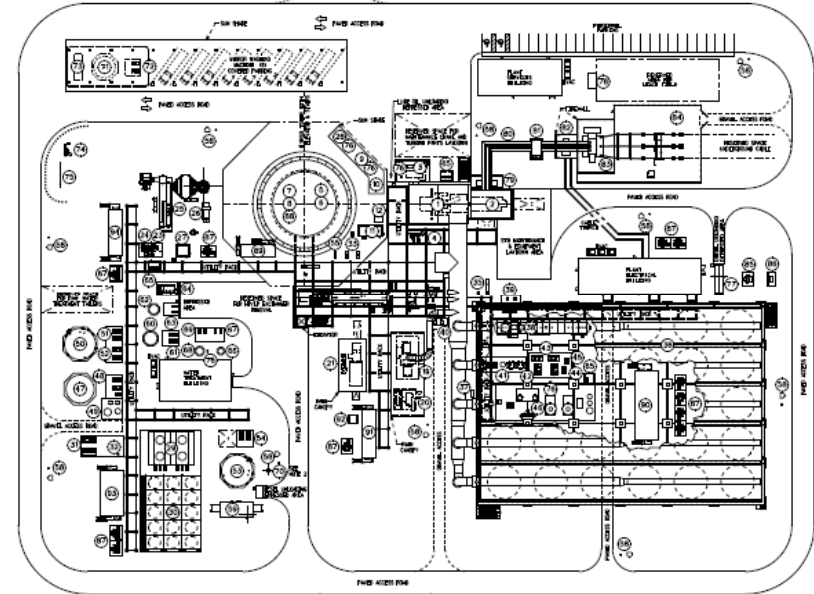
- Following a recommendation from the BLM
- Allows project to be completed in a consistent time frame with PPA obligations.
- Significantly reduces environmental impacts
  - Biological
  - Cultural
  - Air Quality and GHG
  - Waters of the US and State of CA.

Consequences

- Environmental Benefits are reduced by 1/3

**NO NEW LAND IMPACTS ARE PLANNED**

# Rio Mesa Solar – Project Location and Layout



Power Block Layout for RMS 1 and 2

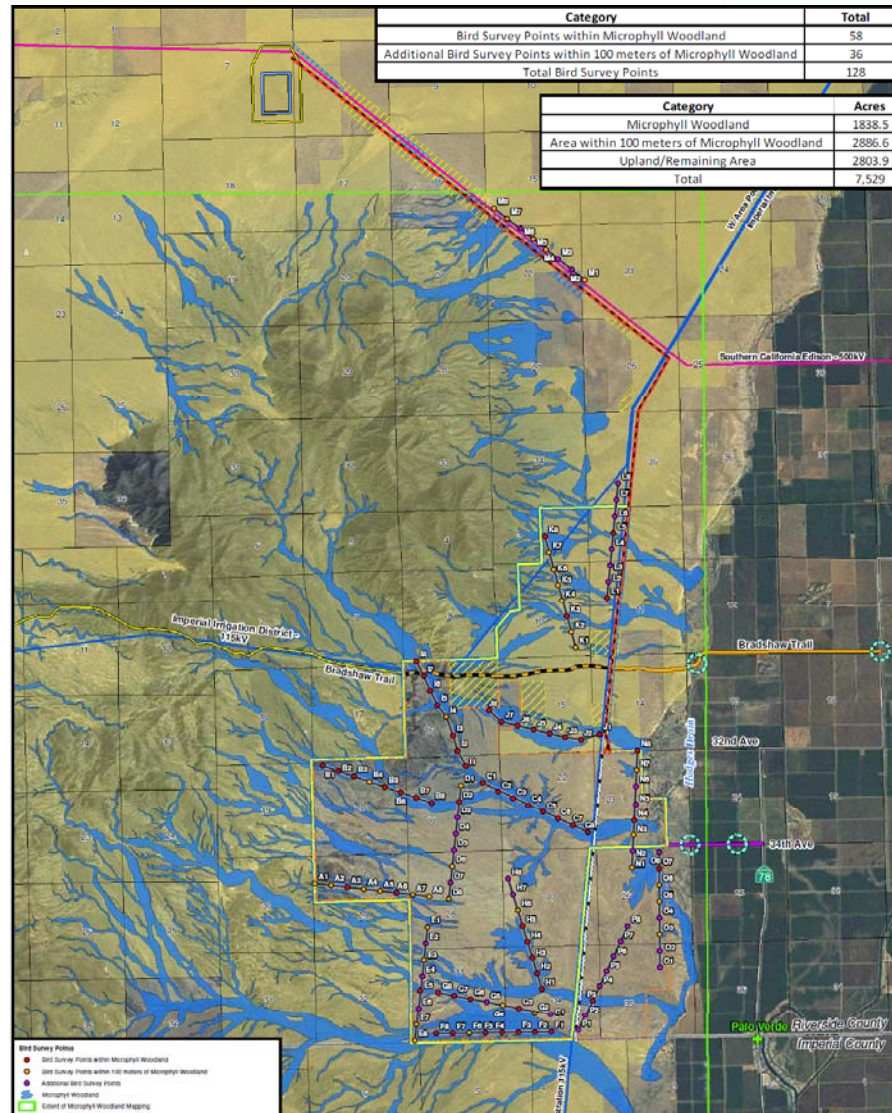
Note: exact location and layout of common facilities to be determined.

# Rio Mesa Solar – Environmental Enhancements

---

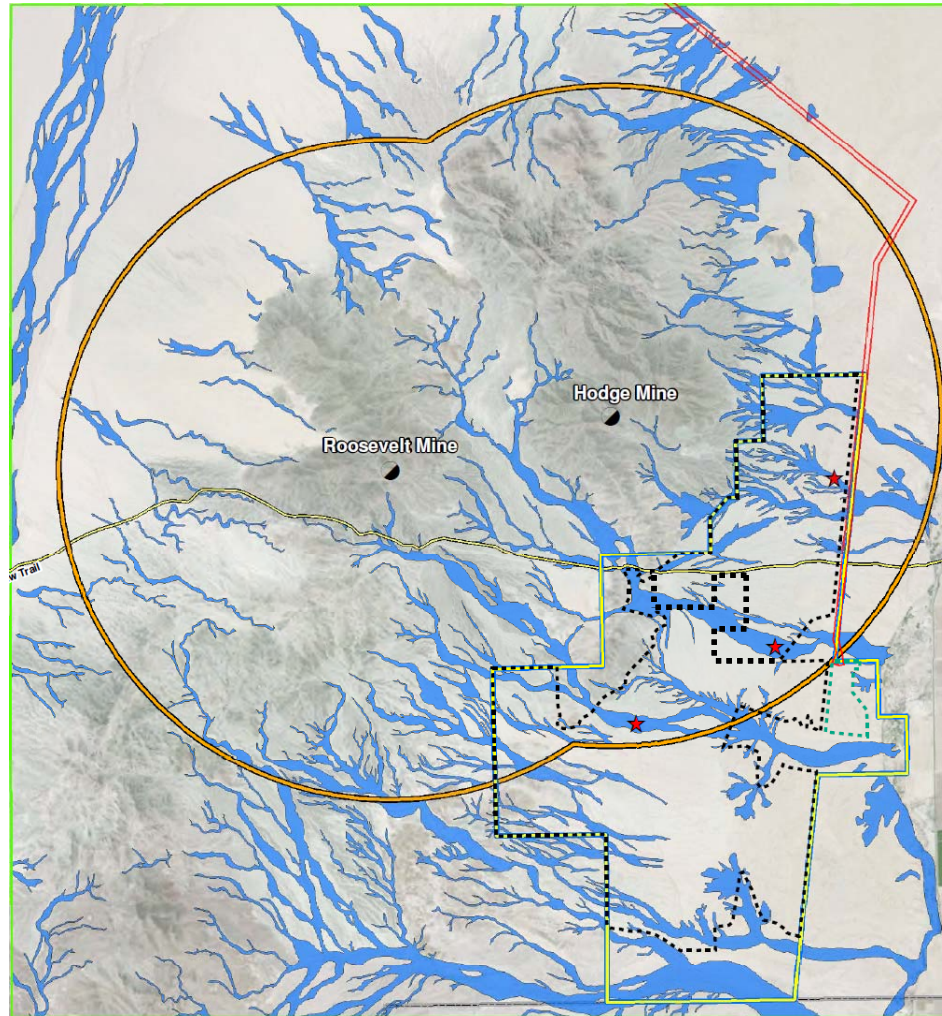
- **Environmental Enhancements by reducing project scope to 2 Units:**
  - Reduction in footprint area of approximately 1800 acres
  - Bird collision risks reduced by 1/3
  - Bird heat/flux impacts reduced by 1/3
  - Reduce impact on Desert Tortoise by 1/3
  - Distance from known bat roosting site is increased and impact on foraging area is reduced by 52 percent.
  - Impact on Microphyll woodlands is lessened by 37 percent.
  - Impact on Waters of the US and State of California are lessened significantly
  - Visual impacts reduced, and closest tower to I-10, Blythe, and Bradshaw Trail eliminated.
  - Reduction in Cultural and Paleontological Resources impacts by 1/3.
  - Bradshaw Trail no longer requires rerouting
  - Imperial Irrigation District T-Line no longer requires rerouting
  - Air Quality impacts reduced, remodeling underway
  - Reduction in duration of construction traffic impacts
  - Reduction in operational water usage needs by 1/3

# Rio Mesa Solar – Microphyll Woodlands



# Rio Mesa Solar – Bat Foraging Area

---



# Rio Mesa Solar – Permitting Plan Forward

---

- Updated key project and environmental information through supplemental responses to Data Requests are being prepared.
  - Impacts are reduced in nearly all areas.
  - Will provide an updated project map and Project Description as soon as possible.
  - Most updated project information can be provided quickly.
  - Air Quality remodeling is longest lead item.



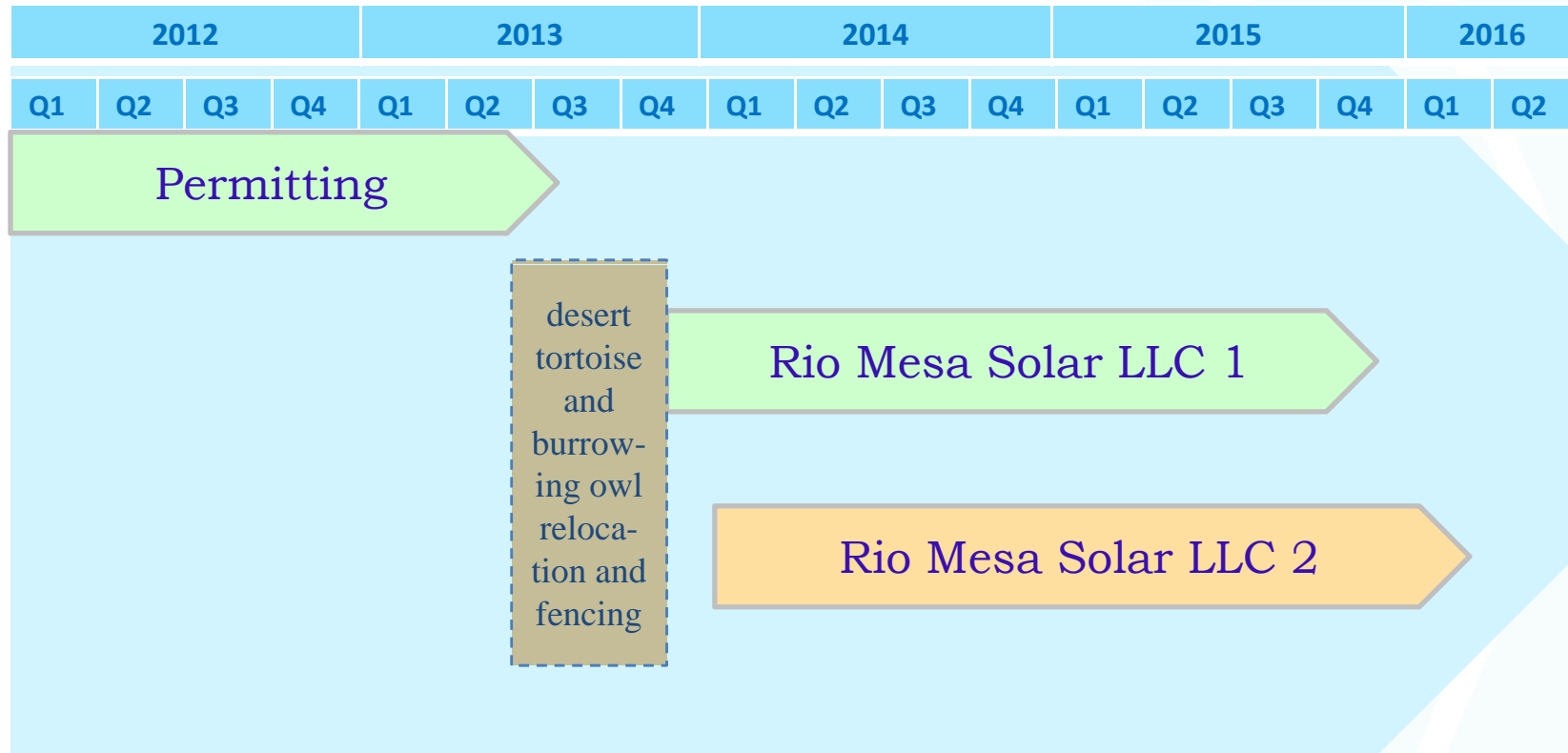
# Rio Mesa Solar – Permitting Timeline

---

- California Energy Commission (CEC)
  - Generation Site and Gen-Tie line included in CEQA review
    - PSA 8/2012
    - FSA 1/2013
    - CEC Decision Q2 2013 (Per scheduling order issued 4/2012)
  
- Bureau of Land Management (BLM)
  - Gen-Tie Line with Units 1 and 2 as a connected action
  - Moreno Valley District Office Lead
  - File NOI in Q2 2012
  - DEIS Q4 2012
  - ROD and ROW Grants Q2 2013

# Rio Mesa Solar – Overall Construction Schedule

## Preliminary Construction Schedule





# Questions and Answers