



500 Capitol Mall, Suite 1600
Sacramento, California 95814
main 916.447.0700
fax 916.447.4781
www.stoel.com

November 18, 2011

MELISSA A. FOSTER
Direct (916) 319-4673
mafoster@stoel.com

VIA EMAIL

Mr. Eric Solorio, Siting Project Manager
California Energy Commission
1516 Ninth Street
Sacramento, CA 95814

DOCKET	
11-AFC-1	
DATE	Nov. 18 2011
RECD.	Nov. 18 2011

**Re: Pio Pico Energy Center Project (11-AFC-01)
Staff's Questions Regarding Applicant's Responses to Data Requests 72 and 73**

Dear Mr. Solorio:

On November 16, 2011, Energy Commission Staff Ann Crisp requested additional information via email related to Applicant Pio Pico Energy Center LLC's responses to data request numbers 72 and 73. To that end, Applicant provides its responses thereto in the enclosure provided.

Please do not hesitate to call me should you have any questions regarding this submittal.

Respectfully submitted,

A handwritten signature in cursive script that reads "Melissa A. Foster".

Melissa A. Foster

MAF:jmw
Enclosure
cc: See Proof of Service

Pio Pico Energy Center Project

11-AFC-01

Supplemental Responses to Biological Resources Data Request

Responses to Email Correspondence from CEC Staff Ann Crisp

Request dated November 16, 2011

Request:

1. Date of field surveys, names, and qualifications of surveyors.

Response:

Pedestrian-based reconnaissance field surveys were performed within the study area on October 21, 2011 by URS biologist Greg Hoisington, which is enclosed.

Request:

2. Results of surveys, e.g. list of species observed during surveys.

Tables 1 and 2 below include a list of all wildlife and plant species observed within the study area during the October 21, 2011 surveys.

Table 1: Wildlife Species Observed within the Study Area	
SCIENTIFIC NAME	COMMON NAME
INSECTS	
APIDAE	APID BEES
<i>Apis mellifera</i>	Honey Bee
PIERIDAE	WHITE & SULFER BUTTERFLIES
<i>Pontia protodice</i>	Checkered White Butterfly
RIODINIDAE	METALMARKS & RELATIVES
<i>Apodemia mormo</i>	Mormon metalmark
TENEBRIONIDAE	Darkling beetles
<i>Eleodes sp.</i>	Darkling ground beetle
REPTILES	
IGUANIDAE	IGUANID LIZARDS
<i>Sceloporus occidentalis</i>	Western fence lizard
<i>Uta stansburiana</i>	Common Side-blotched Lizard

BIRDS	
ACCIPITRIDAE	ACCIPITER HAWKS
<i>Accipiter cooperii</i>	Cooper's Hawk
<i>Buteo jamaicensis</i>	Red-tailed Hawk
AEGITHALIDAE	BUSHTIT
<i>Psaltriparus minimus</i>	Bushtit
COLUMBIDAE	PIGEONS AND DOVES
<i>Columba livia</i>	Rock Pigeon
<i>Zenaida macroura</i>	Mourning Dove
STURNIDAE	STARLINGS & MYNAS
<i>Sturnus vulgaris</i>	European Starling
TIMALIIDAE	OLD WORLD WARBLERS
<i>Chamaea fasciata</i>	Wrentit
TROCHILIDAE	HUMMINGBIRDS
<i>Calypte anna</i>	Anna's Hummingbird
TROGLODYTIDAE	WRENS
<i>Salpinctes obsoletus</i>	Rock Wren
TYRANNIDAE	TYRANT FLYCATCHERS
<i>Sayornis saya</i>	Say's Phoebe
<i>Sayornis nigricans</i>	Black Phoebe
<i>Tyrannus vociferans</i>	Cassin's Kingbird
MIMIDAE	MOCKINGBIRDS, THRASHERS
<i>Toxostoma redivivum</i>	California Thrasher
<i>Mimus polyglottos</i>	Northern Mockingbird
CORVIDAE	JAYS and CROWS
<i>Corvus brachyrhynchos</i>	American Crow
<i>Corvus corax</i>	Common Raven
EMBERIZIDAE	AMERICAN SPARROWS
<i>Pipilo crissalis</i>	California Towhee
FRINGILLIDAE	FINCHES
<i>Carduelis psaltria</i>	Lesser Goldfinch
<i>Carpodacus mexicanus</i>	House Finch
MAMMALS	
<i>Canis familiaris</i>	Domestic dog (sign)
<i>Canis latrans</i>	Coyote (sign)
<i>Otospermophilus beecheyi</i>	California ground squirrel
<i>Thomomys bottae</i>	Botta's pocket gopher
<i>Sylvilagus audubonii</i>	Desert cottontail

Table 2: Plant Species Observed within the Study Area

Scientific Name	Common Name
GYMNOSPERMS	
<i>Cupressus sp.</i>	Cypress
<i>Pinus spp.*</i>	Pine tree
ANGIOSPERMS (DICOTYLEDONS)	
<i>Acacia redolens*</i>	Wattle
<i>Ambrosia psilostachya</i>	Western ragweed
<i>Artemisia californica</i>	California sagebrush
<i>Baccharis pilularis</i>	Coyote bush
<i>Baccharis salicifolia</i>	Mule fat
<i>Baccharis sarothroides</i>	Broom baccharis
<i>Bougainvillea spectabilis*</i>	Bougainvillea
<i>Brassica nigra*</i>	Black mustard
<i>Carpobrotus chilensis*</i>	Sea-fig
<i>Carpobrotus edulis*</i>	Hottentot-fig
<i>Centaurea solstitialis*</i>	Yellow star-thistle
<i>Cirsium vulgare*</i>	Bull thistle
<i>Conyza canadensis</i>	Horseweed
<i>Encelia californica</i>	California bush sunflower
<i>Eriogonum fasciculatum</i>	California buckwheat
<i>Erodium cicutarium*</i>	Red-stemmed filaree
<i>Erythrina sp.*</i>	Coral tree
<i>Eucalyptus globulus*</i>	Blue gum
<i>Foeniculum vulgare*</i>	Fennel
<i>Fraxinus sp.</i>	Ash
<i>Gazania sp.*</i>	African daisy
<i>Gnaphalium californicum</i>	California everlasting
<i>Gnaphalium canescens</i>	Felty everlasting
<i>Hedera helix*</i>	English ivy
<i>Helianthus annuus</i>	Common sunflower
<i>Hemizonia fasciculata</i>	Fascicled tarweed
<i>Heteromeles arbutifolia</i>	Toyon
<i>Heterotheca grandiflora</i>	Telegraph weed
<i>Isocoma menziesii</i>	Coastal goldenbush
<i>Isomeris arborea</i>	bladderpod
<i>Jacaranda mimosifolia*</i>	Jacaranda
<i>Limonium californicum</i>	Western marsh rosemary
<i>Lactuca serriola*</i>	Prickly lettuce
<i>Lotus scoparius</i>	Deerweed
<i>Malosma laurina</i>	Laurel sumac
<i>Malva parviflora*</i>	Cheeseweed
<i>Marah macrocarpus</i>	Wild cucumber
<i>Marrubium vulgare*</i>	Horehound

Table 2: Plant Species Observed within the Study Area

Scientific Name	Common Name
<i>Medicago polymorpha</i> *	Bur clover
<i>Melilotus albus</i> *	Yellow sweetclover
<i>Mimulus aurantiacus</i>	Bush monkey flower
<i>Myoporum laetum</i> *	myoporum
<i>Nassella pulchra</i>	Purple needlegrass
<i>Nerium oleander</i> *	Oleander
<i>Nicotiana glauca</i> *	Tree tobacco
<i>Olea europaea</i> *	Common olive
<i>Opuntia basilaris</i>	Beavertail cactus
<i>Picris echioides</i> *	Bristly ox-tongue
<i>Plantago lanceolata</i> *	English plantain
<i>Platanus racemosa</i>	Western sycamore
<i>Pyracantha sp.</i> *	Firethorn
<i>Rhus integrifolia</i>	Lemonade berry
<i>Rumex crispus</i> *	Curly dock
<i>Salix lasiolepis</i>	Arroyo willow
<i>Salvia apiana</i>	White sage
<i>Salvia mellifera</i>	Black sage
<i>Sambucus mexicanus</i>	Mexican elderberry
<i>Schinus molle</i> *	Peruvian pepper tree
<i>Schinus terebinthifolius</i> *	Brazilian pepper tree
<i>Solanum americanum</i>	Common nightshade
<i>Sonchus asper</i> *	Prickly sow thistle
<i>Sonchus oleraceus</i> *	Common sow thistle
<i>Stephanomeria virgata</i>	Twiggy wreathplant
<i>Tamarix ramosissima</i> *	Mediterranean tamarisk
<i>Tropaeolum majus</i> *	Garden nasturtium
<i>Ulmus parvifolia</i> *	Chinese elm
<i>Vinca major</i> *	Greater periwinkle
ANGIOSPERMS (MONOCOTYLEDONS)	
<i>Arundo donax</i> *	Giant reed
<i>Avena fatua</i> *	Wild oat
<i>Bromus diandrus</i> *	Ripgut grass
<i>Bromus madritensis</i> *	Foxtail chess
<i>Cortaderia selloana</i>	Pampass grass
<i>Cynodon dactylon</i> *	Bermuda grass
<i>Hordeum murinum</i> *	Glaucous foxtail barley
<i>Lolium multiflorum</i> *	Italian ryegrass
<i>Pennisetum setaceum</i> *	Fountain grass
<i>Phoenix canariensis</i> *	Canary Island date palm
<i>Phoenix dactylifera</i> *	Date palm
<i>Piptatherum miliaceum</i> *	Rice grass

Table 2: Plant Species Observed within the Study Area

Scientific Name	Common Name
<i>Polypogon monspeliensis</i> *	Rabbitsfoot grass
<i>Washingtonia robusta</i>	Mexican fan palm
<i>Yucca whipplei</i>	Chaparral yucca

*non-native species

Request:

- 3. Location on a map of sensitive habitats (e.g. vegetation communities incl. coastal sage scrub; wetlands incl. all special aquatic resource areas) see data request 72h and 73h - the vegetation communities and special aquatic resource areas are identified in text but no map is provided.**

Response:

Exhibits A (Escondido – Palomar line) and B (Friars – Doublet line) illustrate vegetation communities and potential aquatic resources within the study area.

Fitzgerald, Maggie

From: Ann Crisp <ACrisp@energy.state.ca.us>
Sent: Tuesday, November 15, 2011 4:42 PM
To: Eric Solorio
Cc: Rick York
Subject: PPEC TSE Appendix A - data request

Hi Eric,

I have reviewed the TSE appendix and have the following requests for additional information:

1. Date of field surveys, names, and qualifications of surveyors
2. Results of surveys, e.g. list of species observed during surveys
3. Location on a map of sensitive habitats (e.g. vegetation communities incl. coastal sage scrub; wetlands incl. all special aquatic resource areas) see data request 72h and 73h - the vegetation communities and special aquatic resource areas are identified in text but no map is provided

Thanks!

Ann



Areas of Expertise

Wetland Ecology, Natural Resource and Wetland Permitting; Clean Water Act; California Fish and Game Codes; Migratory Bird Treat Act; California Coastal Commission; state and federal Endangered Species Acts; Regional Water Quality Control Board permitting, Biological Monitoring and Surveys for eelgrass (*Zostera marina*), invasive algae (*Caulerpa taxifolia* and banned species), and other marine flora and fauna.

Years of Experience

With URS: 6 Years

With Other Firms: 2 Years

Education

MS/2004/Biology/California State University, Long Beach.

BS/2001/Ecology and Environmental Biology/California State University, Long Beach.

Supplemental Education/Training

- Desert Tortoise Council Tortoise Handling Workshop.
- Flat Tailed Horned Lizard Monitor Training – Administered by Bureau of Land Management, El Centro, CA.
- *Caulerpa taxifolia* Identification Training – Administered by NMFS, Long Beach, CA.
- Project Management Training PM100/200, Tetra Tech EC, Inc
- CEQA 16-Hour Training Workshop – Successful CEQA Compliance, UCLA Extension Course
- 40-Hour HAZWOPER, December, 2004; 8-Hour HAZWOPER Refresher December, 2008
- Chevron Loss Prevention Systems (LPS) Training
- 38-Hour Army Corp of Engineers Wetland Delineation and Management Training Program, Richard Chinn Environmental Training
- Nuclear Health Physics Radiation Protection Training Program, 1990 Institute for Resource Management (IRM)

GREGORY HOISINGTON

Ecologist, Permitting Specialist

OVERVIEW

Mr. Hoisington is an Ecologist with over 8 years of professional experience in natural resource permitting; conducting biological surveys, construction monitoring and Global Positioning System (GPS) data collection. His professional experience also includes protocol USFWS special status species surveys for avian, mammalian, reptilian, vernal pool branchiopods and botanical surveys. He has prepared numerous biological reports and assessments to demonstrate compliance with the Western Riverside Multiple Species Habitat Conservation Plan (MSHCP), Section 7 and 10 of the Endangered Species act (ESA), California Fish and Game Codes, California Environmental Quality Act (CEQA), National Environmental Policy Act (NEPA), and the California Energy Commission (CEC). The following describes Mr. Hoisington's experience in greater detail.

PROJECT SPECIFIC EXPERIENCE

Soda Mountain Solar Project

Task Manager responsible for the preparation of reports, and assessments to document compliance with the BLM's West Mojave Plan, NEPA, Clean Water Act, California Fish and Game Codes, Migratory Bird Treaty Act, federal and state Endangered Species Acts for the proposed Soda Mountain Solar Project. Caithness LLC, is in the process of obtaining authorization to construct and operate the Soda Mountain Solar Project - a proposed 350 megawatt ("MW") solar electric power generating facility on federal lands managed by the U.S. Department of Interior, BLM, in San Bernardino County. The Project consists of about 7,000 acres, located approximately 5 miles southwest of Baker, California along Route I-15. The solar power generating system proposed will utilize photovoltaic panels. The power generated by the Project will be intended for sale to one or more California electric utilities. Mr. Hoisington coordinated Habitat Assessment Surveys; Focused Desert Tortoise Surveys; Focused Special Status Plant Surveys; Special Aquatic Resource Area Preliminary Jurisdictional Determinations; and Focused Mojave Fringe-Toed Lizard Surveys. Additional responsibilities included developing restoration plans, field survey protocols, and mitigation packages in accordance with local, state, and federal agency standards.

Carrizo Energy, LLC; San Luis Obispo County, CA.

Performed habitat suitability assessments and protocol adult and juvenile blunt nose leopard lizard surveys as well as small mammal trapping and reporting for Carrizo Energy, LLC, to gain environmental permits to license and build their Carrizo Energy Solar Farm (CESF). The project consists of approximately 195 Compact Linear Fresnel Reflector (CLFR) solar concentrating lines, associated steam drums, steam turbine generators (STGs), air-cooled condensers (ACCs), and infrastructure, producing up to a nominal 177 megawatts (MW) net.



Granite Wind Energy Generation Project

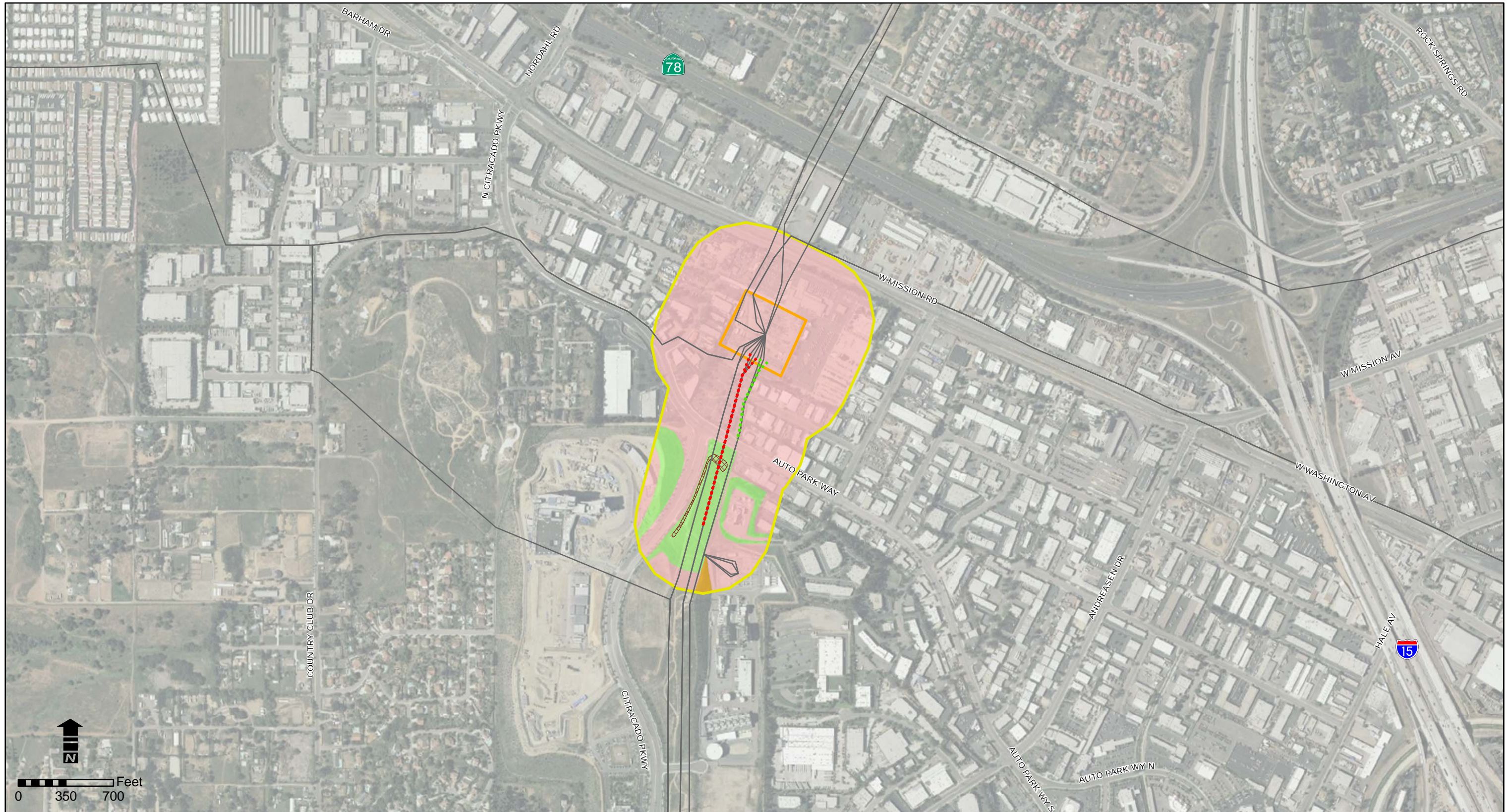
Mr. Hoisington - participated in the preparation of reports, and assessments to document compliance with the BLM's West Mojave Plan, NEPA, Clean Water Act, California Fish and Game Codes, Migratory Bird Treaty Act, federal and state Endangered Species Acts for the proposed Granite Wind Project. Granite Wind, LLC is making an application for a right-of-way (ROW) grant for long-term commercial wind energy development from the Bureau of Land Management (BLM), Barstow District, California Field Office for the installation of a new wind energy generation facility and an application to San Bernardino County for a Conditional Use Permit for a commercial wind energy facility. The proposed facility will include the following: Access roads; Underground electrical collection system; Underground communication lines; Up to 28 wind turbines, including concrete foundations, tubular steel towers, nacelles, and blades; Up to 28 pad mount transformers, one to be located beside the tower of each wind turbine; Overhead transmission line; Operations and Maintenance(O&M)building; Electrical interconnection / switchyard; Electrical substation; and Two permanent meteorological masts. The proposed project will be located on lands administered by the BLM, as well as private lands. Additional responsibilities included developing restoration plans, and mitigation packages in accordance with local, state, and federal agency standards.

Pio Pico Energy Center Project

Mr. Hoisington prepared reports and assessments to document compliance with the Clean Water Act, California Fish and Game Codes, Migratory Bird Treaty Act, California Energy Commission and federal and state ESA for the Pio Pico Energy Center (PPEC). Mr. Hoisington also coordinated and conducted threatened and endangered species surveys including: Coastal California Gnatcatcher, Fairy Shrimp, and least Bell's vireo, southwestern flycatcher and quino checkerspot butterfly. The PPEC is a simple-cycle electrical generating facility that is contracted under a 20-year power purchase agreement (PPA) with San Diego Gas & Electric (SDG&E) in response to their 2009 Request for Offers (RFO). PPEC is designed to directly satisfy the San Diego area peaking and load-shaping generation current and long-term requirements. The PPEC site will be located in Chula Vista, California, along the southeastern city boundary of Chula Vista

Panoche Energy Center Project

Mr. Hoisington supported the Panoche Energy Center (PEC) Application for Certification and subsequent Data Adequacy and Data Request responses. Prepared reports and assessments to comply and authorize *Incidental Take* for the PEC. The PEC is a proposed simple-cycle power generation project that consists of four (4) General Electric LMS100 natural gas-fired combustion turbine generators (CTGs) and natural gas pipeline tie-in. The total net generating capacity is 400MW with each CTG capable of generating 100MW. The proposed plant will be owned and operated by Panoche Energy Center, LLC. The electricity generated by this project would be in support of a contract with Pacific Gas and Electric (PG&E).



LEGEND

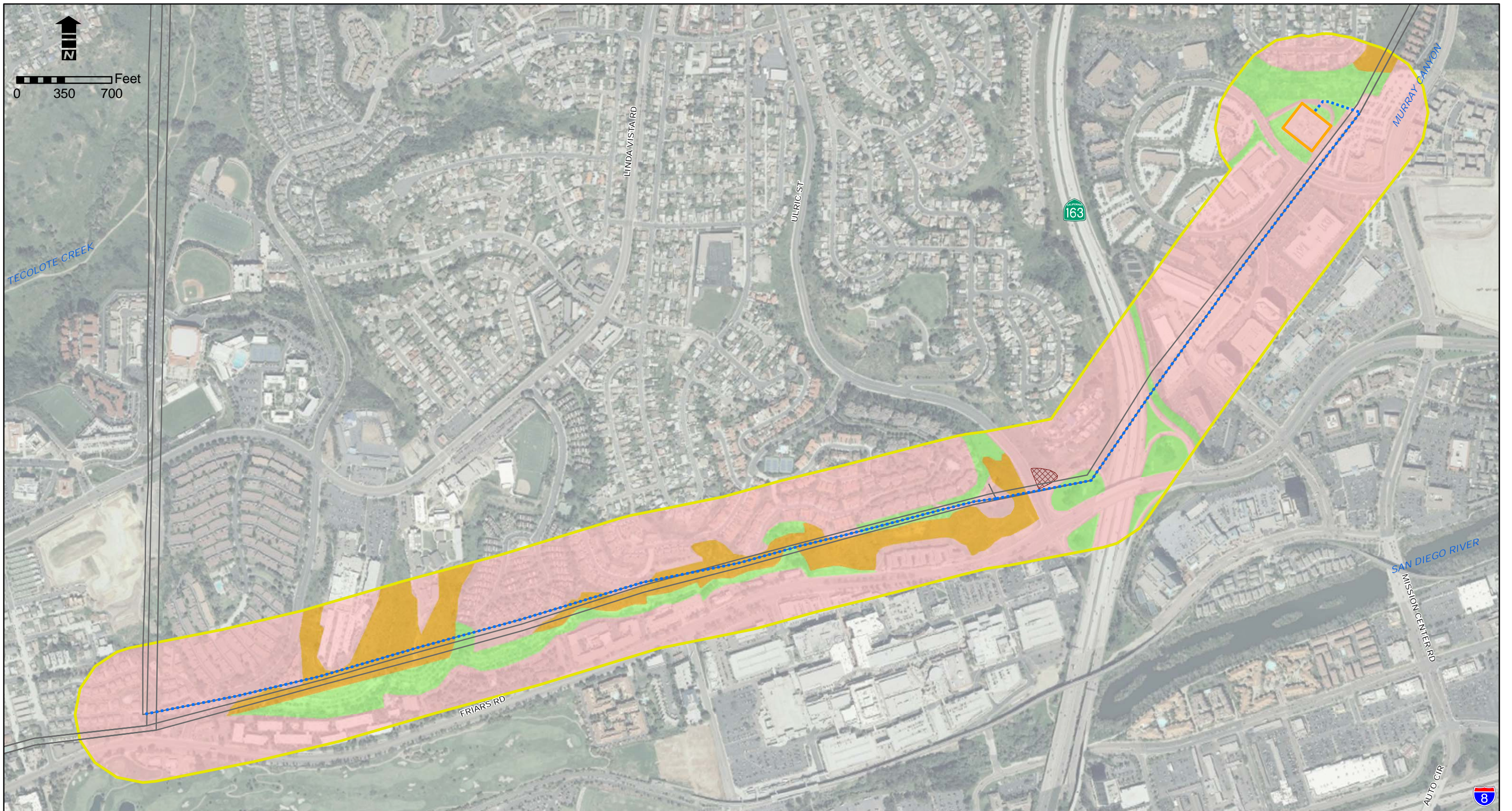
- 69 KV LINES TO BE UNDERGROUNDED (APPROXIMATELY 600 FEET)
- ESCONDIDO-PALOMAR 230 KV #1 AND #2 RECONDUCTORING (APPROXIMATELY 1,200 FEET)
- EXISTING TRANSMISSION LINE
- ESCONDIDO SUBSTATION
- STUDY AREA
- COASTAL SAGE SCRUB
- DISTURBED/DEVELOPED
- ORNAMENTAL
- POTENTIAL SPECIAL AQUATIC RESOURCE

FIGURE 9
VEGETATION COMMUNITIES ALONG
ESCONDIDO-PALOMAR UPGRADES

PIO PICO
ENERGY CENTER

PROJECT NO.: 29874827
DATE: OCTOBER 2011





LEGEND	
--- FRIARS-DOUBLET TAP 138 KV RECONDUCTORING (APPROXIMATELY 10,500 FEET)	COASTAL SAGE SCRUB
— EXISTING TRANSMISSION LINE	DISTURBED/DEVELOPED
□ FRIARS SUBSTATION	ORNAMENTAL
□ STUDY AREA	POTENTIAL SPECIAL AQUATIC RESOURCE

EXHIBIT B
 VEGETATION COMMUNITIES ALONG
 FRIARS-DOUBLET TAP 138KV UPGRADE

PIO PICO
 ENERGY CENTER

PROJECT NO.: 29874827
 DATE: OCTOBER 2011



BEFORE THE ENERGY RESOURCES CONSERVATION AND DEVELOPMENT
COMMISSION OF THE STATE OF CALIFORNIA
1516 NINTH STREET, SACRAMENTO, CA 95814
1-800-822-6228 – WWW.ENERGY.CA.GOV

APPLICATION FOR CERTIFICATION
FOR THE *PIO PICO ENERGY CENTER, LLC*

Docket No. 11-AFC-1
PROOF OF SERVICE
(Revised 8/15/11)

Pio Pico Energy Center, LLC

**Letter to Eric Solorio, Siting Project Manager, California Energy Commission,
dated November 18, 2011 re Staff's Questions Regarding
Applicant's Responses to Data Requests 72 and 73**

APPLICANT

Gary Chandler, President
Pio Pico Energy Center
P.O. Box 95592
South Jordan, UT 84095
grchandler@apexpowergroup.com

David Jenkins, Project Manager
Pio Pico Energy Center, LLC
1293 E. Jessup Way
Mooresville, IN 46158
djenkins@apexpowergroup.com

APPLICANT'S CONSULTANTS

Maggie Fitzgerald, Project Manager
URS Corporation
2020 East 1st Street, Suite 400
Santa Ana, CA 92705
maggie_fitzgerald@urscorp.com

COUNSEL FOR APPLICANT

John A. McKinsey
Melissa A. Foster
Stoel Rives, LLP
500 Capitol Mall, Suite 1600
Sacramento, CA 95814
jamckinsey@stoel.com
mafoster@stoel.com

INTERESTED AGENCIES

California ISO
E-mail Preferred
e-recipient@caiso.com

ENERGY COMMISSION

CARLA PETERMAN
Commissioner and Presiding Member
cpeterma@energy.state.ca.us

Jim Bartridge
Adviser to Commissioner Peterman
jbartrid@energy.state.ca.us

KAREN DOUGLAS
Commissioner and Associate
Member
kldougla@energy.state.ca.us

Galen Lemei
Adviser to Commissioner Douglas
glemei@energy.state.ca.us

Raoul Renaud
Hearing Officer
rrenaud@energy.state.ca.us

Eric Solorio
Siting Project Manager
esolorio@energy.state.ca.us

Kevin W. Bell
Staff Counsel
kwbell@energy.state.ca.us

Jennifer Jennings
Public Adviser
E-mail preferred
publicadviser@energy.state.ca.us

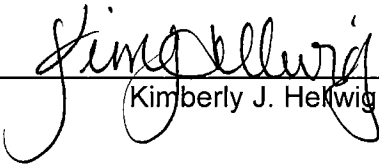
DECLARATION OF SERVICE

I, Kimberly J. Hellwig, declare that on November 18, 2011, I deposited copies of the aforementioned document and, if applicable, a disc containing the aforementioned document in the United States mail at 500 Capitol Mall, Suite 1600, Sacramento, California 95814, with first-class postage thereon fully prepaid and addressed to those identified on the Proof of Service list above.

AND/OR

Transmission via electronic mail, personal delivery and first class U.S. mail were consistent with the requirements of California Code of Regulations, Title 20, sections 1209, 1209.5, and 1210. All electronic copies were sent to all those identified on the Proof of Service list above.

I declare under penalty of perjury under the laws of the State of California that the foregoing is true and correct, that I am employed in the county where this mailing occurred, and that I am over the age of 18 years and not a party to the proceeding.



(Kimberly J. Hellwig)