



500 Capitol Mall, Suite 1600
Sacramento, California 95814
main 916.447.0700
fax 916.447.4781
www.stoel.com

August 11, 2011

MELISSA A. FOSTER
Direct (916) 319-4673
mafoster@stoel.com

VIA EMAIL

Mr. Eric Solorio, Siting Project Manager
California Energy Commission
1516 Ninth Street
Sacramento, CA 95814

DOCKET	
11-AFC-01	
DATE	AUG 11 2011
RECD.	AUG 11 2011

**Re: Pio Pico Energy Center Project (11-AFC-01)
Supplemental Responses to Data Requests BIO-29 and BIO-30**

Dear Mr. Solorio:

On behalf of Applicant Pio Pico Energy Center, LLC, please find enclosed herein supplemental responses to Staff's Data Requests BIO-29 and BIO-30. Specifically, the submitted information is provided in response to Energy Commission Staff Ann Crisp's August 2, 2011 email correspondence to Applicant's consultant, Lincoln Hulse.

Please contact me directly if you have any questions regarding the enclosed information.

Very truly yours,

A handwritten signature in blue ink that reads "Melissa A. Foster".

Melissa A. Foster

MAF:kjh

Enclosures

cc: Proof of Service List

**PIO PICO ENERGY CENTER PROJECT
11-AFC-01**

**Supplemental Responses to BIO-29 and BIO-30
Responses to Ann Crisp's August 2, 2011 Email Correspondence**

1. What are the cumulative sources used for the nitrogen deposition isopleths on the maps?
As requested by CEC staff, we used the same non-project sources for nitrogen deposition as were used for the cumulative air quality impact analysis
 - Pacific Recovery
 - Calpeak Border
 - Larkspur 1 and 2
 - Otay Mesa Generating Station

2. What does the 13.0, 15.0 and 17.0 kg/ha represent? Is this baseline plus additional regional sources? Also what does the 19 kg/ha represent?
As requested by the CEC staff, we calculated cumulative impact by adding the modeled impact from the project and non-project sources to the staff-specified regional background rate of 11.56 kg/ha/yr. The isopleths are lines connecting points where the cumulative impact has the specified value. The 19 kg/ha point is the modeled maximum cumulative impact in the area that the figure represents.

3. The map states kg/ha - is this actually kg/ha/yr?
Yes

4. Please identify the sources of the data layers, including the sources for critical habitat for species. I believe the map does not show the revised Quino checkerspot butterfly critical habitat from 2009 but the original 2002 Quino critical habitat designation.
The habitat and species source data is provided below:
 - Quino Checkerspot Butterfly: U.S. Fish and Wildlife Service, Carlsbad Fish and Wildlife Final Critical Habitat for the Quino Checkerspot Butterfly, June 17, 2009.
 - Otay Tarplant: U.S. Fish and Wildlife Service, Carlsbad Fish and Wildlife Final Critical Habitat for the Otay tarplant, December 10, 2002.
 - CA Gnatcatcher: U.S. Fish and Wildlife Service, Carlsbad Fish and Wildlife Final Critical Habitat for the Coastal California gnatcatcher, December 19, 2007.**Furthermore, Figures 29.1 and 29.2 have been revised based on the 2009 Quino Checkerspot Butterfly data and are submitted herewith.**

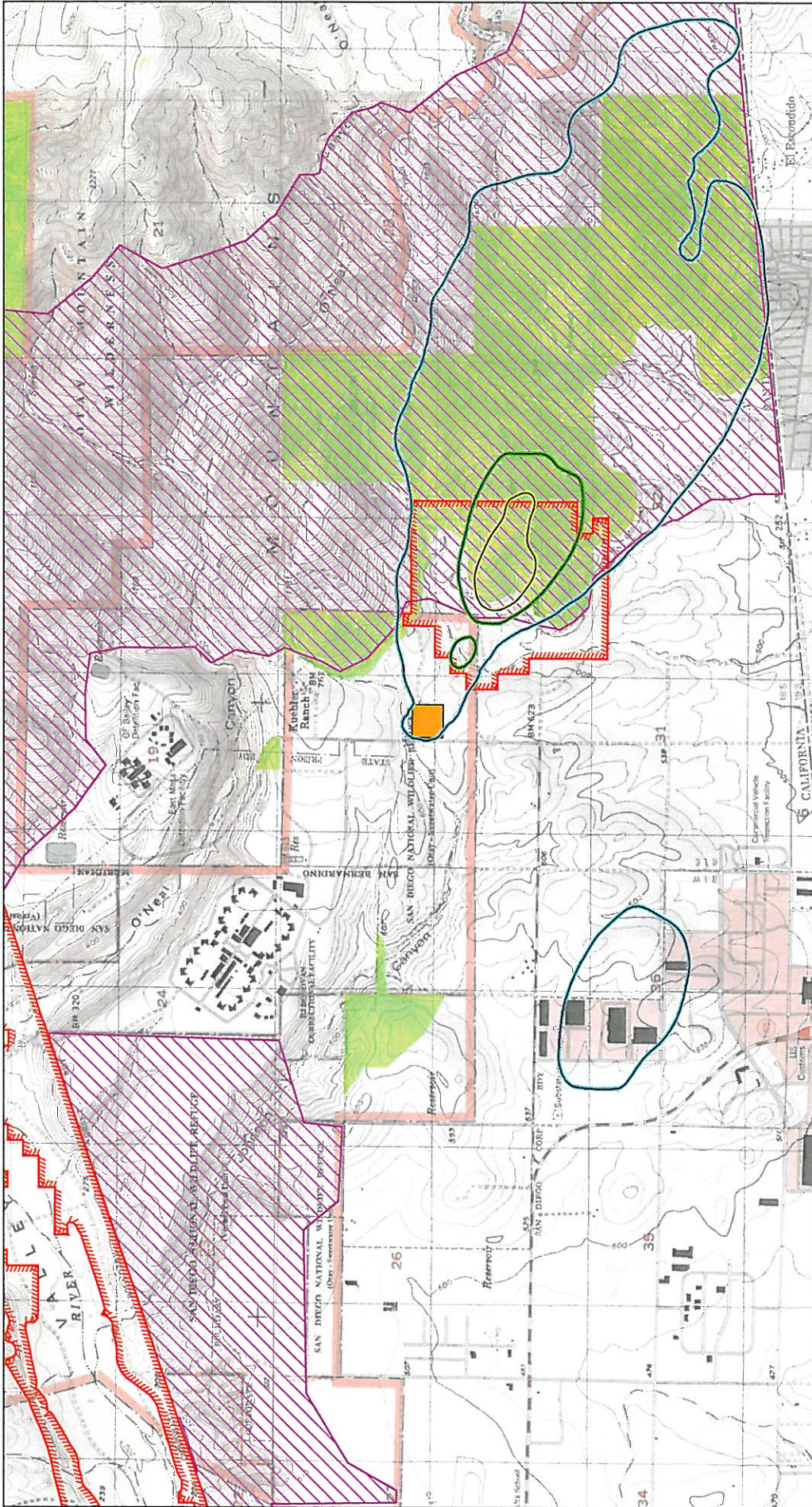
5. The response to BIO-30 refers to weed management on a 50-acre parcel. What 50-acre parcel is referred to?
The 50 acre number that is referenced for mitigation was derived from the 17.0 kg/HA/YR isopleth line which is approximately 50 acres. The 50-acre parcel for weed management is included as mitigation to compensate for the Project's relatively small nitrogen contribution to the regional background. The exact location of the 50-acre parcel has not

been identified; however Applicant is exploring options with local land owners, mitigation banks and adjacent federal lands.

6. How was the 6% contribution calculated?

The 6% represents the approximate average of the Project's contribution to the cumulative impact as a percentage on USFWS critical habitat for the Quino Checkerspot Butterfly. This value was taken from Figure 29.3 which has not been previously provided and represents the values (as a percentages) of the Project's contribution in relation to the location of USFWS critical habitat for Quino Checkerspot Butterfly.

Figure 29.3 shows the Project's contribution (expressed as a percentage) to the total cumulative impact. The values shown in Figure 29.3 were calculated using a spreadsheet containing output from the nitrogen deposition model (AERMOD, using appropriate options). The project's impact at each receptor in the modeling domain was divided by the total cumulative impact at that receptor, and the result converted to a percentage. The contribution in the area represented by Figure 29.3 ranged from close to zero (throughout most of the region) to a maximum of 10.9% (at the project's point of maximum impact).



REV. FIGURE DR-BIO 29.1
CUMULATIVE NITROGEN DEPOSITION,
INCLUDING PROJECT CONTRIBUTION
(UNITS OF KG/HA/YR)

PICO PICO
ENERGY CENTER

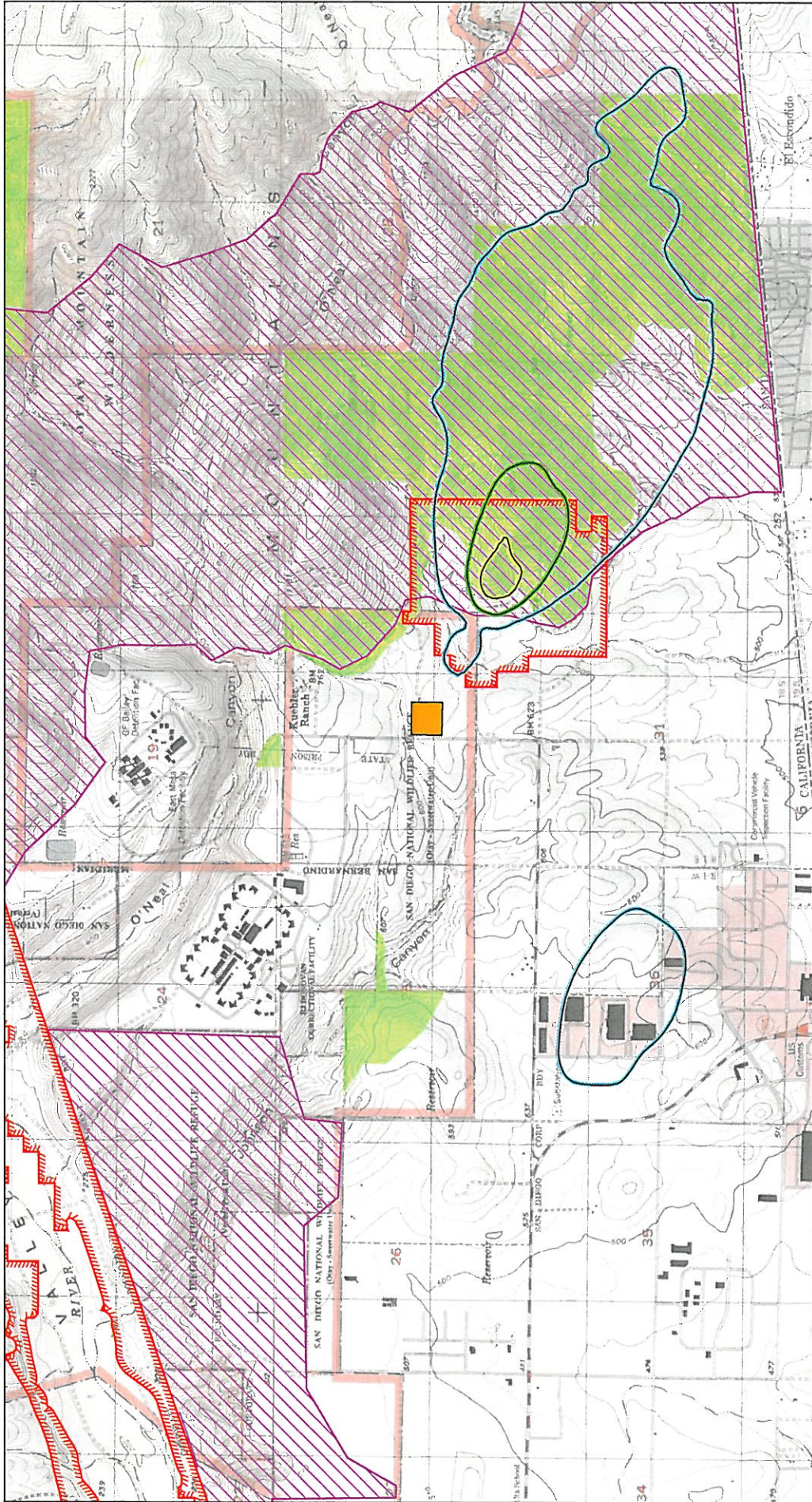
PROJECT NO: 29814627
 DATE: JULY 2011



- Legend**
- Project Site
 - Olay Tarplant Critical Habitat
 - Quino Checkerspot Butterfly
 - California Gnatcatcher Critical Habitat
 - Nitrogen Deposition (kg/ha/yr)
 - 13.0
 - 15.0
 - 17.0
- Maximum Impact (19 0068 kg/ha)

Source: U.S. Fish and Wildlife Service, Crisfield Fish and Wildlife Final Critical Habitat for the Quino Checkerspot Butterfly (*Euphydryas editha quino*), June 17, 2009
 U.S. Fish and Wildlife Service, Crisfield Fish and Wildlife Final Critical Habitat for the Coast California Gnatcatcher (*Peptolopha californica*), December 19, 2007





REV. FIGURE DR-BIO 29.2
CUMULATIVE NITROGEN DEPOSITION, BUT NOT INCLUDING PROJECT CONTRIBUTION (UNITS OF KG/HA/YR)

Legend

- Project Site
- Olay Tarplant Critical Habitat
- Quino Checkerspot Butterfly
- California Gnatcatcher Critical Habitat

Nitrogen Deposition (kg/ha/yr)

- 13.0
- 15.0
- 17.0

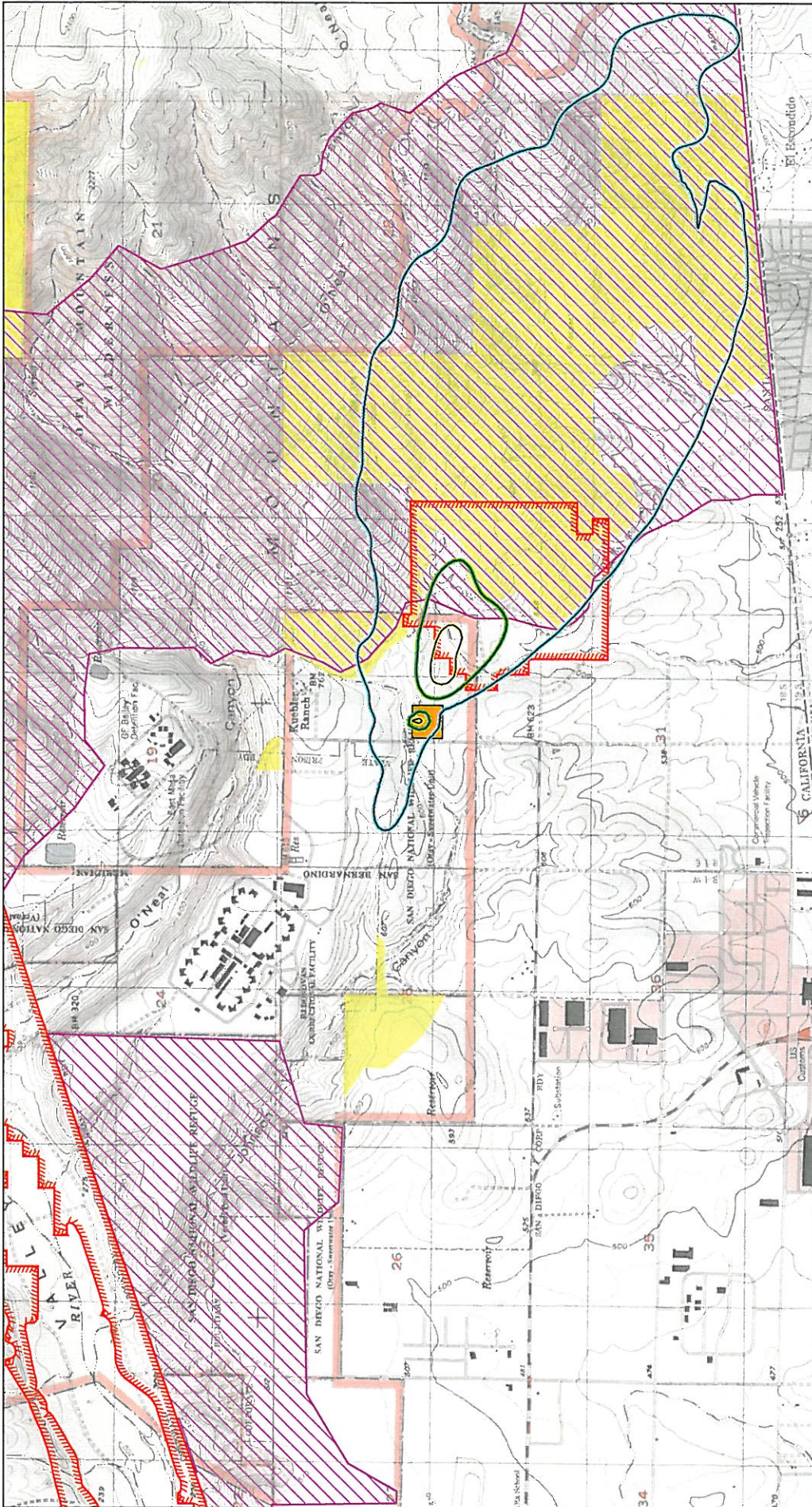
Maximum Impact (19 0058 kg/ha)

PROJECT NO. 28974827
 DATE: JULY 2011

PIO PICO
 ENERGY CENTER

URS

Source: U.S. Fish and Wildlife Service, Calisad Fish and Wildlife Final Critical Habitat for the Quino Checkerspot Butterfly (*Euphydryas editha quino*) June 17, 2005
 U.S. Fish and Wildlife Service, Calisad Fish and Wildlife Final Critical Habitat for the Demaree coniguens (*Chrysothrix demaree*) December 10, 2002
 U.S. Fish and Wildlife Service, Calisad Fish and Wildlife Final Critical Habitat for the Coastal California Gnatcatcher (*Polioptila californica californica*) December 19, 2007



Legend

- Project Site
- Clay Tarplant Critical Habitat
- Quino Checkerspot Butterfly
- California Gnatcatcher Critical Habitat
- 2
- 6
- 10

Project Contribution as a Percentage of Total Cumulative Nitrogen Deposition (%)

Scale: 0 1,000 2,000 Feet

PROJECT DR-BIO 29.3
 PROJECT CONTRIBUTION AS A PERCENTAGE OF TOTAL CUMULATIVE NITROGEN DEPOSITION (UNITS OF PERCENT)

PJO PICO ENERGY CENTER

PROJECT NO: 29874827
 DATE: JULY 2011

URS

Source: U.S. Fish and Wildlife Service, Calisbad Fish and Wildlife Final Critical Habitat for the Quino Checkerspot Butterfly (Euphydryas editha quino), June 17, 2009
 U.S. Fish and Wildlife Service, Calisbad Fish and Wildlife Final Critical Habitat for the California Gnatcatcher (Peuplca californica californica), December 19, 2007

Ann Crisp <ACrisp@energy.state.ca.us>
08/02/2011 04:01 PM



To: <lincoln_hulse@URS Corp.com>

cc: Carol Watson <CWatson@energy.state.ca.us>, Eric Solerio <ESolerio@energy.state.ca.us>, Rick York <RYork@energy.state.ca.us>

Subject: Pio Pico- BIO-29 and BIO-30

Hi Lincoln,

I am the Energy Commission biologist assigned to Pio Pico along with Carol Watson. I have the following questions regarding the BIO-29 and BIO-30 submittal.

1. What are the cumulative sources used for the nitrogen deposition isopleths on the maps?
2. What does the 13.0, 15.0 and 17.0 kg/ha represent? Is this baseline plus additional regional sources? Also what does the 19 kg/ha represent?
3. The map states kg/ha - is this actually kg/ha/yr?
4. Please identify the sources of the data layers, including the sources for critical habitat for species. I believe the map does not show the revised Quino checkerspot butterfly critical habitat from 2009 but the original 2002 Quino critical habitat designation.
5. The response to BIO-30 refers to weed management on a 50-acre parcel. What 50-acre parcel is referred to?
6. How was the 6% contribution calculated?

Feedback to these questions would be greatly appreciated. Please let me know the responses as soon as possible, preferably this week.

Thanks!

Ann Crisp

Staff Biologist
Biological Resources Unit
California Energy Commission
String, Transmission, and Environmental Protection Division
1516 9th Street, MS 40
Sacramento, CA 95814
(916) 651-3776 (office)
(916) 651-8868 (fax)
e-mail: acrisp@energy.state.ca.us

Body of message

BEFORE THE ENERGY RESOURCES CONSERVATION AND DEVELOPMENT
COMMISSION OF THE STATE OF CALIFORNIA
1516 NINTH STREET, SACRAMENTO, CA 95814
1-800-822-6228 – WWW.ENERGY.CA.GOV

APPLICATION FOR CERTIFICATION
FOR THE *PIO PICO ENERGY CENTER, LLC*

Docket No. 11-AFC-1
PROOF OF SERVICE
(Revised 5/12/11)

Pio Pico Energy Center, LLC

**Letter to Eric Solorio, Siting Project Manager, California Energy Commission,
dated August 11, 2011 re Applicant's Supplemental Responses to
Data Requests BIO-29 and BIO-30**

APPLICANT

Gary Chandler, President
Pio Pico Energy Center
P.O. Box 95592
South Jordan, UT 84095
grchandler@apexpowergroup.com

David Jenkins, Project Manager
Pio Pico Energy Center, LLC
1293 E. Jessup Way
Mooresville, IN 46158
djenkins@apexpowergroup.com

APPLICANT'S CONSULTANTS

Maggie Fitzgerald, Project Manager
URS Corporation
2020 East 1st Street, Suite 400
Santa Ana, CA 92705
maggie_fitzgerald@urscorp.com

COUNSEL FOR APPLICANT

John A. McKinsey
Melissa A. Foster
Stoel Rives, LLP
500 Capitol Mall, Suite 1600
Sacramento, CA 95814
jamckinsey@stoel.com
mafoster@stoel.com

INTERESTED AGENCIES

California ISO
E-mail Preferred
e-recipient@caiso.com

ENERGY COMMISSION

CARLA PETERMAN
Commissioner and Presiding Member
cpeterma@energy.state.ca.us

Jim Bartridge
Adviser to Commissioner Peterman
jbartrid@energy.state.ca.us

KAREN DOUGLAS
Commissioner and Associate
Member
kldougla@energy.state.ca.us

Galen Lemei
Adviser to Commissioner Douglas
glemei@energy.state.ca.us

Raoul Renaud
Hearing Officer
rrenaud@energy.state.ca.us

Eric Solorio
Siting Project Manager
esolorio@energy.state.ca.us

Kevin W. Bell
Staff Counsel
kwbell@energy.state.ca.us

Jennifer Jennings
Public Adviser
E-mail preferred
publicadviser@energy.state.ca.us

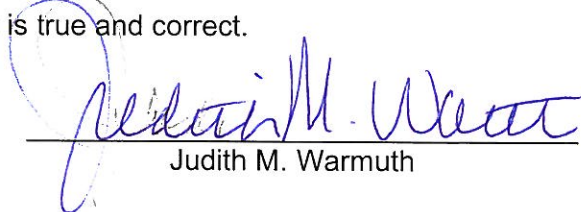
DECLARATION OF SERVICE

I, Judith M. Warmuth, declare that on August 11, 2011, I deposited copies of the aforementioned document in the United States mail at 500 Capitol Mall, Suite 1600, Sacramento, California 95814, with first-class postage thereon fully prepaid and addressed to those identified on the Proof of Service list above.

AND/OR

Transmission via electronic mail, personal delivery or first class U.S. mail were consistent with the requirements of California Code of Regulations, Title 20, sections 1209, 1209.5, and 1210. All electronic copies were sent to all those identified on the Proof of Service list above.

I declare under penalty of perjury that the foregoing is true and correct.



Judith M. Warmuth