

CALIFORNIA ENERGY COMMISSION

1516 NINTH STREET
SACRAMENTO, CA 95814-5512
www.energy.ca.gov



April 29, 2011

DOCKET**11-AFC-1**DATE Apr 29 2011RECD. May 02 2011

Lieutenant Scott Ybarrondo
San Diego County Sheriff's Department
Imperial Beach Station
845 Imperial Beach Boulevard
Imperial Beach, CA 91932-2796

RE: Potential Law Enforcement Needs for the Proposed Pio Pico Energy Center Project (11-AFC-01)

Dear Lieutenant Ybarrondo,

Pio Pico Energy Center, LLC is seeking a license from the California Energy Commission to construct and operate a power generation facility, the Pio Pico Energy Center (PPEC or proposed project), within the unincorporated area of Otay Mesa in San Diego County. The proposed project is a simple-cycle power generation plant with three General Electric LMS 100 natural gas-fired combustion turbine generators. The total net generating capacity would be 300 megawatts (MW). The project site is located in the southeast corner of the Alta Road and Calzada de la Fuente intersection within the Otay Mesa Business Park and adjacent to the existing Otay Mesa Generating Project.

In order to assess impacts of the proposed project on local law enforcement service providers, Energy Commission staff requests information on existing resources and services in the project area and the estimated need for additional services with implementation of the project. A form is provided as an attachment to this letter with data needs and questions highlighted. Key characteristics of the applicant's proposed project that are considered applicable to a law enforcement needs assessment are briefly summarized on the form. A map of the project site is also attached.

From our review of the project's Application For Certification (AFC), we understand the Imperial Beach Station would provide law enforcement services to the project site; however, we also understand that an interim sheriff station became operational in 2010 at the intersection of Enrico Fermi Drive and Otay Mesa Road, less than one mile from the project site. The AFC also states a new permanent sheriff facility is planned at the intersection of Enrico Fermi Drive and Lone Star Road and would be funded through the Community Facilities District number 09-1 Special Tax. Should the project be licensed by the Energy Commission, the District tax rate would be applied to the project site by the San Diego County Assessor.

We have a few questions in addition to the attached needs assessment form:

1. Of the three stations identified, which station or stations would respond to law enforcement calls at the project site during construction and operation? If approved, the applicant anticipates construction would begin February 2013 and

Scott Ybarrondo

April 29, 2011

Page 2 of 2

commissioning and initial startup would begin March 2014. Commercial operation would begin May 2014.

2. When will the new sheriff station (at the intersection of Enrico Fermi Drive and Lone Star Road) become operational?

The project applicant's entire AFC is available at the Energy Commission's website: <http://www.energy.ca.gov/sitingcases/piopico/documents/applicant/afc/>. Section 5.10 Socioeconomics would be the most pertinent section to review, as well as Section 5.14 Hazardous Materials Handling, and Section 5.17 Worker Safety.

Please review and complete the enclosed form by July 14, 2011 and send it to my attention via e-mail (as a pdf or Word file), fax, or U.S. mail. My contact information is below. If you have questions regarding the proposed project or this request please contact Lisa Worrall of my staff at (916) 654-4545 or by e-mail at: lworrall@energy.state.ca.us.

Thank you in advance for your time and assistance.

Sincerely,

Amanda Stennick
Planner III/Supervisor
California Energy Commission
Siting, Transmission, and Environmental Protection Division
1516 Ninth Street, MS 40
Sacramento, CA 95814

Tele: (916) 654-3859

Fax: (916) 651-8868

Enclosures:

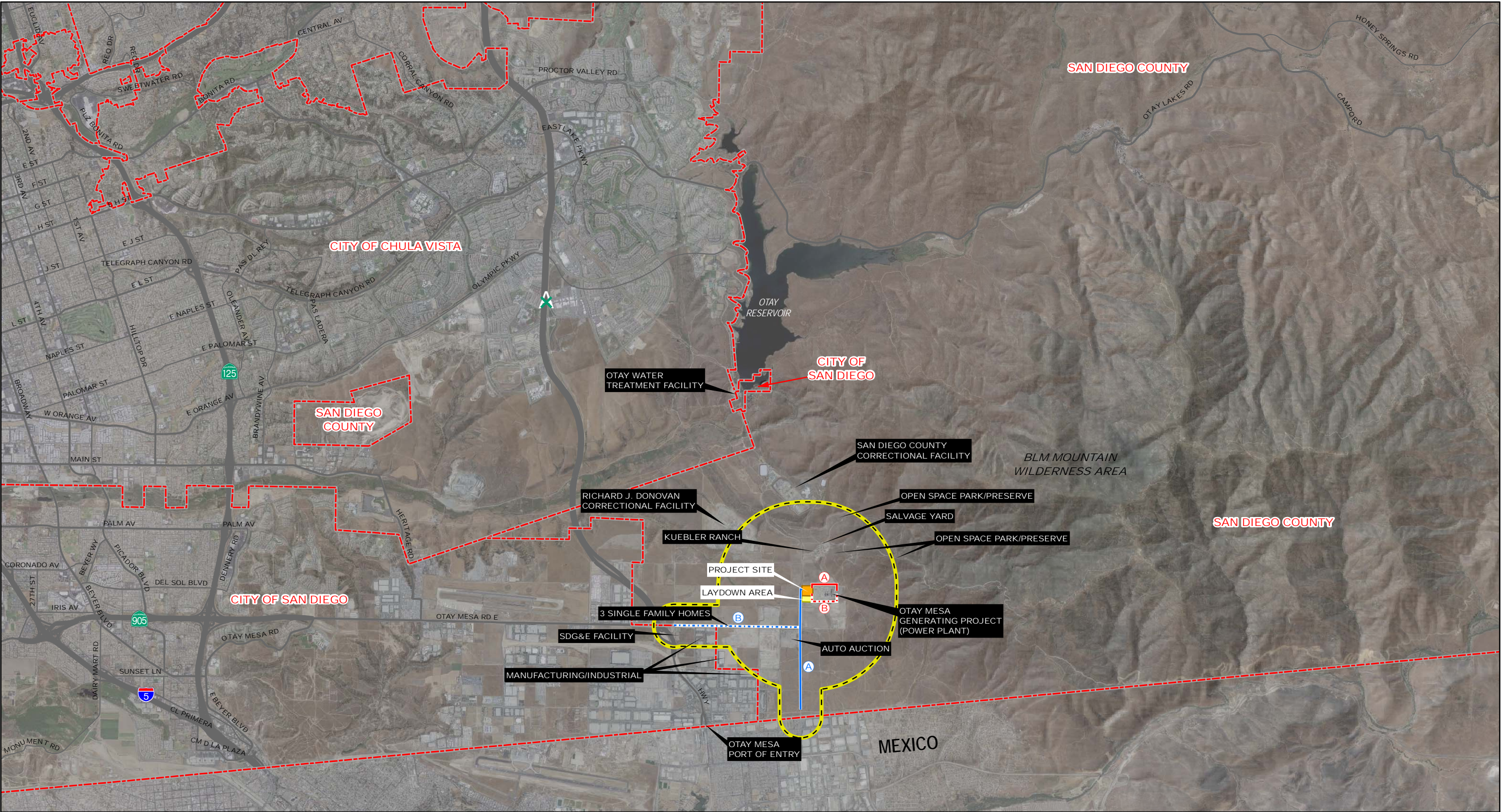
Local Law Enforcement Needs Assessment Form

Map showing the approximate location of the project site (from the AFC)

cc. Captain David Myers, San Diego County Sheriff's Department,
Imperial Beach Station
Eric Solorio, Project Manager

Law Enforcement Needs Assessment Form	
Project Characteristics, as Proposed by the Project Applicant	
Type, Location, Size, and Site Access:	Power generating facility proposed on 9.9 acres in the southeast corner of the Alta Road and Calzada de la Fuente intersection in the Otay Mesa Business Park in unincorporated San Diego County. Primary site access is from Calzada de la Fuente on the north side of the site.
Estimated Schedule:	Construction of the power generating facility, from site preparation and grading to commercial operation, would take approximately 16 months. If approved, construction would begin February 2013, commissioning and initial startup would begin March 2014, and commercial operation would begin May 2014.
Construction (Traffic and Work Force):	Construction would generally occur between 7 a.m. and 5:30 p.m., M-F. During the three month peak construction period, approximately 658 daily trips would occur. Of these daily trips, truck traffic accounts for 48 trips, where 1 truck is equivalent to three passenger cars, and 42 trips are attributed to equipment delivery. The number of workers per day range from 50 to 284, with the highest numbers predicted during construction months six through ten. A traffic management plan would be implemented.
Operation (Staff and Traffic):	The project would employ approximately 12 full-time workers resulting in approximately 24 daily trips. Occasional visitor trips, maintenance visits, and as-needed equipment deliveries are anticipated to likely occur outside of the morning and evening peak traffic hours.
Security:	During construction, a temporary chain-link fence would surround the project and construction laydown sites. Once operational, a permanent chain-link security fence would encompass the facility and the facility switchyard. A motorized controlled-access gate for personnel and vehicles would be located at the main entrance. Cameras would will allow voice communication between the main gate, control room and reception area. Security would be maintained on a 24-hour basis with either surveillance devices or personnel.
Existing Law Enforcement Resources and Services in the Project Area (attach additional paper if more room is needed to answer questions)	
Names and addresses of the facilities (e.g., sheriff substations) serving the project area, and distance of closest dispatch facility to the project site:	
Adopted or desired service standard (e.g., one sworn officer per 1,000 population):	
Existing staffing levels for facilities serving the project area (including sworn officers and civilians, totals and per shift):	
Estimated response times to the project site:	
Current projected needs (e.g., facilities and staff) to maintain or meet existing service levels:	
Exchange of general law enforcement responsibilities (e.g., formal and/or informal agreements with local municipalities for provision of services) in the project area:	
Dispatch center where 911 calls from land lines and cell telephones are dispatched (location of dispatch center and process for dispatching calls):	

Law Enforcement Needs Assessment Form	
Current inventory of specialized equipment (e.g., helicopters or other aircraft):	
Estimated Need for Law Enforcement Services, Equipment, and Facilities (attach additional paper if more room is needed to answer questions)	
Is there a process or formula used by your department to determine the need for additional law enforcement services to serve a new large-scale power plant? Please explain.	
<p>Could the project trigger a need for additional law enforcement services for on-site crimes against persons, theft of materials, and/or vandalism? Please explain.</p> <p>During project construction:</p> <p>During project operation:</p>	
<p>Could increased project-related traffic affect circulation and access on roads near the project site to the extent that an impact to emergency response times might occur? Please explain.</p> <p>During project construction:</p> <p>During project operation:</p>	
Do law enforcement personnel review development site plans for projects to assess potential law enforcement issues (e.g., lighting and other safety factors)? Please explain.	
Are specific measures recommended to reduce the potential for crimes to occur at or near the project site (e.g., specific types of security fencing)? Please explain.	
Please explain any other law enforcement concerns that have not been addressed by this needs assessment form.	
Person Completing This Needs Assessment Form	
Name: Title/Position: Telephone No: E-mail Address:	



Legend	
Jurisdictional Boundary	Route A 230 kV Transmission Line
One-Mile Project Site Radius and Quarter-Mile Linears Radius	Route B 230 kV Transmission Line
Project Site	Route A Natural Gas Line
Laydown Area	Route B Natural Gas Line

0 3,000 6,000 Feet

FIGURE 5.9-1
JURISDICTIONAL BOUNDARIES
AND EXISTING LAND USES
SURROUNDING SITE

PIO PICO
ENERGY CENTER

PROJECT NO.: 29874839
DATE: DECEMBER 2010

Source: DigitalGlobe, 2009