

Existing Generating Units in the United States by State, Company and Plant, 2003

(Existing generating units as of January 1, 2004)

	State	County	Utility ID	Company	Plant ID	Plant Name	Primary Purpose Code	Generator ID		Nameplate Capacity (Megawatts)
1	CA	San Diego	13960	NRG Cabrillo Power Ops Inc	303	Kearny	22	KEA1		17
2	CA	San Diego	13960	NRG Cabrillo Power Ops Inc	303	Kearny	22	KEA2		66
3	CA	San Diego	13960	NRG Cabrillo Power Ops Inc	303	Kearny	22	KEA3		66
4	CA	San Diego	7726	Grossmont Hospital	10115	Grossmont Hospital	622	GEN1		0.8
5	CA	San Diego	7726	Grossmont Hospital	10115	Grossmont Hospital	622	GEN2		0.8
6	CA	San Diego	2811	CalPeak Power LLC	55513	CalPeak Power Enterprise No 7	22	CPP7		49
7	CA	San Diego	7014	Landfill Generating Partners	10387	Sycamore San Diego	22	2		0.9
8	CA	San Diego	7014	Landfill Generating Partners	10387	Sycamore San Diego	22	1		0.9
9	CA	San Diego	5901	Encina Joint Powers Authority	10026	Encina Water Pollution Control	22132	EG1		0.5
10	CA	San Diego	5901	Encina Joint Powers Authority	10026	Encina Water Pollution Control	22132	EG3		0.5
11	CA	San Diego	5901	Encina Joint Powers Authority	10026	Encina Water Pollution Control	22132	EG2		0.5
12	CA	San Diego	22269	Goal Line LP	54749	Goal Line LP	22	CTG		41.2
13	CA	San Diego	22269	Goal Line LP	54749	Goal Line LP	22	STG		10.2
14	CA	San Diego	13960	NRG Cabrillo Power Ops Inc	301	El Cajon	22	ENCI		16
15	CA	San Diego	13960	NRG Cabrillo Power Ops Inc	302	Encina	22	GT1	17	17
16	CA	San Diego	13960	NRG Cabrillo Power Ops Inc	302	Encina	22	ST1	110	110
17	CA	San Diego	13960	NRG Cabrillo Power Ops Inc	302	Encina	22	5	341	341
18	CA	San Diego	13960	NRG Cabrillo Power Ops Inc	302	Encina	22	3	115	115
19	CA	San Diego	13960	NRG Cabrillo Power Ops Inc	302	Encina	22	2	109	109
20	CA	San Diego	13960	NRG Cabrillo Power Ops Inc	302	Encina	22	4	315	315
21	CA	San Diego	13960	NRG Cabrillo Power Ops Inc	305	Miramar	22	MRGT		38
22	CA	San Diego	16713	Santa Fe Irrigation District	50147	R E Badger Filtration Plant	22	1		1.4
23	CA	San Diego	5969	Escondido City of	457	Bear Valley	22	HC1		0.7
24	CA	San Diego	5969	Escondido City of	457	Bear Valley	22	HC2		0.7
25	CA	San Diego	16764	San Diego City of	50492	Gas Utilization Facility	22132	3		1.5
26	CA	San Diego	16764	San Diego City of	50492	Gas Utilization Facility	22132	1		2.3
27	CA	San Diego	16764	San Diego City of	50492	Gas Utilization Facility	22132	2		2.3
28	CA	San Diego	20700	Wildflower Energy LP	55542	Larkspur Energy Facility	22	CTG2		49.9

29	CA	San Diego	20700	Wildflower Energy LP	55542	Larkspur Energy Facility	22	CTG1	49.9	
30	CA	San Diego	15734	RSD Power Partners LP	54337	NRG Energy San Diego	22	0002	0.8	
31	CA	San Diego	15734	RSD Power Partners LP	54337	NRG Energy San Diego	22	0001	0.8	
32	CA	San Diego	16504	Salk Institute	50057	Salk Institute	561	EG#2	0.6	
33	CA	San Diego	16504	Salk Institute	50057	Salk Institute	561	EG#1	0.6	
34	CA	San Diego	17609	Southern California Edison I	360	San Onofre	22	3	1127	1127
35	CA	San Diego	17609	Southern California Edison I	360	San Onofre	22	2	1127	1127
36	CA	San Diego	9948	Kyocera America Inc	10720	Kyocera America Project	22	0095	0.8	
37	CA	San Diego	9948	Kyocera America Inc	10720	Kyocera America Project	22	0096	0.8	
38	CA	San Diego	9948	Kyocera America Inc	10720	Kyocera America Project	22	0085	0.8	
39	CA	San Diego	9948	Kyocera America Inc	10720	Kyocera America Project	22	0088	0.8	
40	CA	San Diego	7014	Landfill Generating Partners	10386	San Marcos	22	2	0.9	
41	CA	San Diego	7014	Landfill Generating Partners	10386	San Marcos	22	1	0.9	
42	CA	San Diego	27075	San Diego County Water Auth	54242	Alvarado Hydro Facility	22	AHF	2.1	
43	CA	San Diego	4102	Copley Press Inc	10600	Union Tribune Publishing	323	GEN1	3	
44	CA	San Diego	2806	California Dept of Corrections	54936	Richard J Donovan Correctional F	92	03	2.6	
45	CA	San Diego	2811	CalPeak Power LLC	55510	CalPeak Power Border	22	CPP4	49.5	
46	CA	San Diego	2844	Department of the Navy	50963	Naval Hospital Medical Center	622	4TG	4.6	
47	CA	San Diego	745	Applied Energy Inc	10810	NTC/MCRD Energy Facility	22	GEN1	23	
48	CA	San Diego	745	Applied Energy Inc	10810	NTC/MCRD Energy Facility	22	GEN2	2.6	
49	CA	San Diego	745	Applied Energy Inc	10811	Naval Station Energy Facility	22	GEN2	11.6	
50	CA	San Diego	745	Applied Energy Inc	10811	Naval Station Energy Facility	22	GEN1	38.3	
51	CA	San Diego	745	Applied Energy Inc	10812	North Island Energy Facility	22	GEN1	34.5	
52	CA	San Diego	745	Applied Energy Inc	10812	North Island Energy Facility	22	GEN2	4	
53	CA	San Diego	19222	TRW Inc	54645	TRW Radio Systems	561	EG-2	0.6	
54	CA	San Diego	19222	TRW Inc	54645	TRW Radio Systems	561	EG-1	0.6	
55	CA	San Diego	16625	San Diego State University	50061	San Diego State University	611	GEN3	5.1	
56	CA	San Diego	16625	San Diego State University	50061	San Diego State University	611	GEN4	4.1	
57	CA	San Diego	16625	San Diego State University	50061	San Diego State University	611	GEN2	5.1	
58	CA	San Diego	16835	Sea World of California	50165	Sea World of Calif 4160 V Cogen	713	4	0.6	
59	CA	San Diego	16835	Sea World of California	50165	Sea World of Calif 4160 V Cogen	713	1	0.6	
60	CA	San Diego	16835	Sea World of California	50165	Sea World of Calif 4160 V Cogen	713	2	0.6	
61	CA	San Diego	16835	Sea World of California	50165	Sea World of Calif 4160 V Cogen	713	3	0.6	
62	CA	San Diego	3221	CPKelco U.S., Inc	52147	C P Kelco San Diego Plant	311	GEN3	10	
63	CA	San Diego	3221	CPKelco U.S., Inc	52147	C P Kelco San Diego Plant	311	GEN1	8	
64	CA	San Diego	3221	CPKelco U.S., Inc	52147	C P Kelco San Diego Plant	311	GEN2	10	
65	CA	San Diego	12716	Minnesota Methane LLC	55602	North City Cogen Facility	22	UNT2	0.9	

66	CA	San Diego	12716	Minnesota Methane LLC	55602	North City Cogen Facility	22	UNT4		0.9
67	CA	San Diego	12716	Minnesota Methane LLC	55602	North City Cogen Facility	22	UNT3		0.9
68	CA	San Diego	12716	Minnesota Methane LLC	55602	North City Cogen Facility	22	UNT1		0.9
69	CA	San Diego	12716	Minnesota Methane LLC	55094	Miramar Landfill Metro Biosolids C	22	UNT1		1.6
70	CA	San Diego	12716	Minnesota Methane LLC	55094	Miramar Landfill Metro Biosolids C	22	UNT3		1.6
71	CA	San Diego	12716	Minnesota Methane LLC	55094	Miramar Landfill Metro Biosolids C	22	UNT2		1.6
72	CA	San Diego	12716	Minnesota Methane LLC	55094	Miramar Landfill Metro Biosolids C	22	UNT4		1.6
73	CA	San Diego	12397	Metropolitan Water District	484	Red Mountain	22	1		6
74	CA	San Diego	15522	Plains End LLC	55538	Escondido Power Plant	22	GEN1		44
75	CA	San Diego	15522	Plains End LLC	55540	Chula Vista I	22	GEN1		44
76	CA	San Diego	3476	Children's Hospital & Health	10175	Childrens Hospital	622	1698		0.3
77	CA	San Diego	3476	Children's Hospital & Health	10175	Childrens Hospital	622	1710		0.3
78	CA	San Diego	3476	Children's Hospital & Health	10175	Childrens Hospital	622	0799		2
79	CA	San Diego	14359	Pacific Recovery Corp	52204	Otay	22	OTA1		1.8
80	CA	San Diego	14359	Pacific Recovery Corp	52204	Otay	22	OTA2		1.8
81	CA	San Diego	14570	Palomar Medical Center	50319	Palomar Medical Center	622	EG-1		0.6
82	CA	San Diego	14570	Palomar Medical Center	50319	Palomar Medical Center	622	EG-2		0.6
83	CA	San Diego	5507	Duke Energy North America L	310	South Bay Power Plant	22	ST1	136	136
84	CA	San Diego	5507	Duke Energy North America L	310	South Bay Power Plant	22	3	201.6	201.6
85	CA	San Diego	5507	Duke Energy North America L	310	South Bay Power Plant	22	4	240.3	240.3
86	CA	San Diego	5507	Duke Energy North America L	310	South Bay Power Plant	22	5	15	15
87	CA	San Diego	5507	Duke Energy North America L	310	South Bay Power Plant	22	2	136	136
88	CA	San Diego	2811	CalPeak Power LLC	55512	CalPeak Power El Cajon No 6	22	CPP6		48.7
									3989.9	4796.5
									83.18%	
									46.99%	
									20.99%	
									15.20%	16.82%

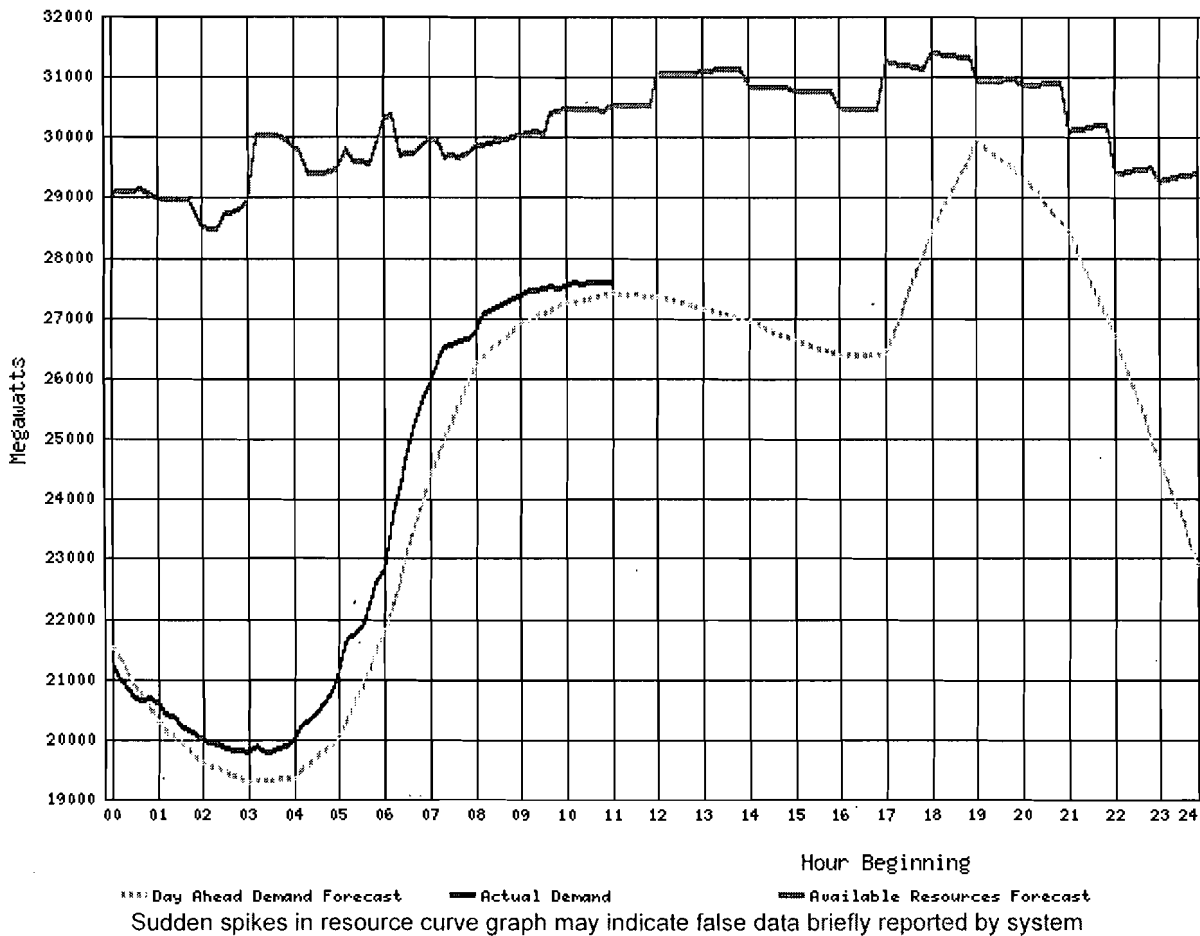
Summer Capacity (Megawatts)	Winter Capacity (Megawatts)	Multi Generator Code	Prime Mover	Energy Source 1	Energy Source 2	Initial Month of Operation	Initial Year of Operation	Unit Status
15	16		GT	NG	DFO	4	1972	SB
55	59		GT	NG	DFO	12	1969	SB
57	61		GT	NG	DFO	12	1969	SB
0.8	0.8		GT	NG		8	1983	OP
0.8	0.8		GT	NG		8	1983	OP
42.08	48.51		GT	NG		11	2001	OP
0.7	0.7		GT	LFG	NG	12	1989	OP
0.7	0.7		GT	LFG	NG	12	1989	OP
0.5	0.5		IC	NG		1	1984	OP
0.5	0.5		IC	NG	OBG	1	1984	OP
0.5	0.5		IC	NG		1	1984	OP
40	40		CT	NG		8	1994	OP
9.4	9.4		CA	NG		8	1994	OP
13	15		GT	NG	DFO	11	1968	SB
14	15		GT	NG	DFO	11	1968	SB
100	100		ST	NG	RFO	11	1954	OP
330	330		ST	NG	RFO	11	1978	OP
110	110		ST	NG	RFO	8	1958	OP
104	104		ST	NG	RFO	7	1956	OP
300	300		ST	NG	RFO	11	1973	OP
33	36		GT	NG	DFO	5	1972	SB
1.4	0.7		HY	WAT		7	1987	OP
0.7	0.7		HY	WAT		6	1986	OP
0.7	0.7		HY	WAT		6	1986	OP
1	1.2		HY	WAT		5	2002	OP
2.3	2.3		IC	OBG		6	1985	OP
2.3	2.3		IC	OBG		6	1985	OP
49.9	49.9		GT	NG	DFO	7	2001	OP

49.9	49.9	GT	NG	DFO	7	2001	OP
0.8	0.8	IC	NG		8	1986	OP
0.8	0.8	IC	NG		8	1986	OP
0.6	0.6	IC	NG		9	1984	OP
0.6	0.6	IC	NG		9	1984	OP
1080	1080	ST	NUC		4	1984	OP
1070	1070	ST	NUC		8	1983	OP
0.81	0.8	IC	NG		2	1989	OP
0.8	0.8	IC	NG		2	1989	OP
0.79	0.8	IC	NG		2	1989	OP
0.8	0.8	IC	NG		2	1989	OP
0.7	0.7	GT	LFG	NG	5	1990	OP
0.7	0.7	GT	LFG	NG	5	1990	OP
1.4	1.1	HY	WAT		1	1985	OP
3	3	GT	NG	DFO	3	1982	OP
2.21	2.55	GT	NG		1	1987	OP
42.08	48.51	GT	NG		11	2001	OP
4.6	4.6	GT	NG		12	2003	OP
21.6	22	CT	NG		5	1989	OP
2.2	2.4	CA	NG		5	1989	OP
9.8	10	CA	NG		7	1989	OP
36.7	37.5	CT	NG		7	1989	OP
33.5	34	CT	NG		6	1989	OP
3.5	3.8	CA	NG		6	1989	OP
0.6	0.6	IC	NG		6	1984	OP
0.6	0.6	IC	NG		6	1984	OP
4.4	4.8	CT	NG		9	2002	OP
4.1	4.1	CA	NG		12	2002	OP
4.4	4.8	CT	NG		9	2002	OP
0.6	0.6	IC	NG		1	1981	OS
0.6	0.6	IC	NG		1	1981	OS
0.6	0.6	IC	NG		1	1981	OS
0.6	0.6	IC	NG		1	1984	OS
9.3	9.3	GT	NG		10	1983	OP
8	8	GT	NG		10	1983	OP
9.3	9.3	GT	NG		10	1983	OP
0.88	0.88	IC	LFG		3	1999	OP

0.88	0.88	IC	LFG		3	1999	OP
0.88	0.88	IC	LFG		3	1999	OP
0.88	0.88	IC	LFG		3	1999	OP
1.56	1.58	IC	LFG	OBG	7	1997	OP
1.56	1.58	IC	LFG	OBG	7	1997	OP
1.56	1.58	IC	LFG	OBG	7	1997	OP
1.56	1.58	IC	LFG	OBG	7	1997	OP
6	6	HY	WAT		6	1985	OP
33.6	34.6	GT	NG		8	2001	OS
33.6	34.6	GT	NG		5	2001	OP
0.3	0.3	IC	NG	PG	6	1983	OP
0.3	0.3	IC	NG	PG	6	1983	OP
2	2	IC	DFO		4	2000	SB
1.7	1.7	IC	LFG		12	1986	OP
1.7	1.7	IC	LFG		4	1991	OP
0.65	0.65	IC	NG		8	1986	SB
0.65	0.65	IC	NG		8	1986	SB
146	146	ST	NG	RFO	7	1960	OP
175	175	ST	NG	RFO	9	1964	OP
222	222	ST	NG	RFO	12	1971	OP
14	14	GT	NG		12	1971	SB
150	150	ST	NG	RFO	6	1962	OP
42	48	GT	NG		5	2002	OP


 Search
 Advanced Search

Today's Outlook



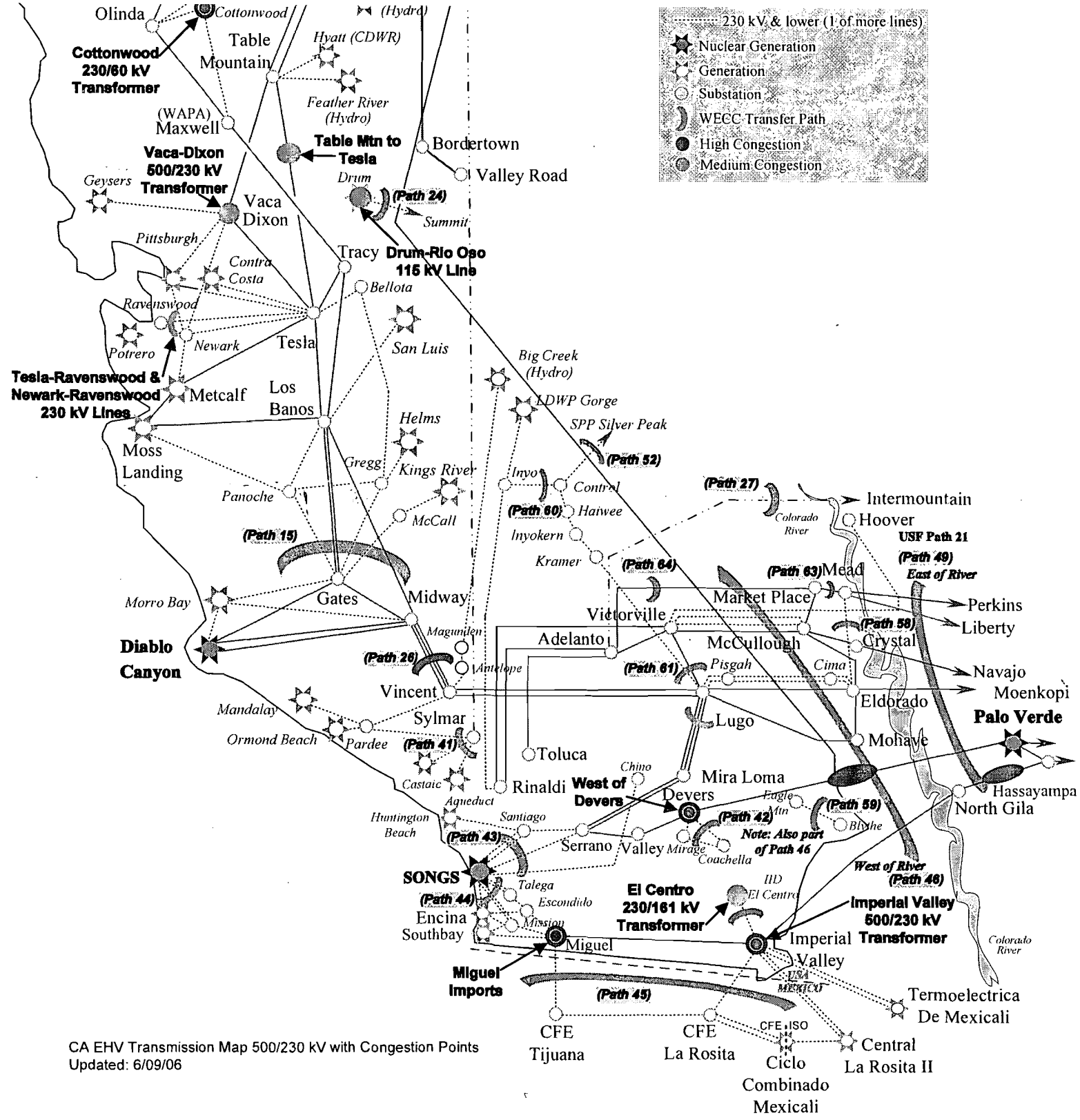
Please note: Today's Outlook is not used by ISO System Operators to operate the ISO Control Area. It does not have the capability to represent real-time system operating conditions, nor is it intended for that purpose. It is an approximation of the values represented. These are FORECAST values based on the California Independent System Operator's best information available at the time. Be mindful that there may be variations or inconsistencies in the data due to data quality or data transfer timing issues.

The green "Available Resources Forecast" graph line on Today's Outlook may change throughout the operating day as some power plants come on line and others go off line. The graph does not include power plants that need more than an hour to begin producing electricity.

Please refer to the California ISO Open Access Same-time Information System (OASIS) site at <http://oasis.caiso.com> for official published information.

This page does not refresh. Please refresh your screen periodically as all trends and statistics are updated every 10 minutes.

	Hour Beginning (MWs)											
	12a	1a	2a	3a	4a	5a	6a	7a	8a	9a	10a	11a
	00	01	02	03	04	05	06	07	08	09	10	11
Demand Forecast	22499	20248	19584	19278	19346	20020	21754	24391	26234	26882	27213	27313
Actual Demand	21196	20553	19955	19763	19982	21077	22797	25928	26762	27336	27493	27513
Available Generation Capacity Forecast	25665	25598	25593	25592	26634	26231	26383	25896	25706	25859	26232	26231
Net Scheduled Interchange	4845	4682	4193	4573	4436	4540	5292	5661	5832	5902	5987	6013
Operating Reserve Requirement (-)	1462	1316	1272	1253	1257	1301	1414	1585	1705	1747	1768	1773
Available Resources Forecast	29048	28964	28514	28912	29813	29470	30261	29972	29833	30014	30451	30413



CA EHV Transmission Map 500/230 kV with Congestion Points
 Updated: 6/09/06