

## DOCKETED

|                         |  |
|-------------------------|--|
| <b>Docket Number:</b>   | 09-AFC-07C   |
| <b>Project Title:</b>   | Palen Solar Power Project - Compliance                             |
| <b>TN #:</b>            | 201291   |
| <b>Document Title:</b>  | Exh. 3080 Desert Sunlight Air Quality Monitoring Report March 2013 |
| <b>Description:</b>     | AQ monitoring report   |
| <b>Filer:</b>           | Ileene Anderson  |
| <b>Organization:</b>    | Center for Biological Diversity                                    |
| <b>Submitter Role:</b>  | Intervenor   |
| <b>Submission Date:</b> | 11/21/2013 4:44:32 PM  |
| <b>Docketed Date:</b>   | 11/21/2013   |

**Desert Sunlight Solar Farm  
Air Quality Monitoring Report**

**March 2013**





# Report Index

## Tables/Figures

| Number   | Table/Figure Name                               |
|----------|---|
| Table 1  | PM10 24-hour Time-Weighted Averages, All Sites  |
| Table 2  | PM2.5 24-hour Time-Weighted Averages, All Sites |
| Table 3  | Hourly BAM Data, All Sites                      |
| Table 4  | Monitored Constituents                          |
| Figure 1 | Meteorological Data Summary                     |



**Table 1: PM10 24-hour Time-Weighted Averages, All Sites  
(See Footnotes)**

All values are in units of micrograms per cubic meter.

| Date      | North Station | East Station | South Station | West Station |
|-----------|---------------|--------------|---------------|--------------|
| 3/1/2013  | 12            | 8            | 5             | 1            |
| 3/2/2013  | 8             | 5            | 3             | 1            |
| 3/3/2013  | 17            | 21           | 14            | 4            |
| 3/4/2013  | 29            | 12           | 13            | 3            |
| 3/5/2013  | 10            | 8            | 9             | 2            |
| 3/6/2013  | 19            | 18           | 17            | 4            |
| 3/7/2013  | 7             | 10           | 9             | 3            |
| 3/8/2013  | 7             | 7            | 5             | 1            |
| 3/9/2013  | 7             | 7            | 8             | 2            |
| 3/10/2013 | 13            | 15           | 14            | 4            |
| 3/11/2013 | 5             | 6            | 9             | 1            |
| 3/12/2013 | 5             | 6            | 12            | 3            |
| 3/13/2013 | 9             | 6            | 8             | 2            |
| 3/14/2013 | 6             | 6            | 8             | 2            |
| 3/15/2013 | 6             | 10           | 10            | 6            |
| 3/16/2013 | 19            | 21           | 20            | 20           |
| 3/17/2013 | 51            | 60           | 53            | 50           |
| 3/18/2013 | 15            | 17           | 17            | 15           |
| 3/19/2013 | 27            | 23           | 29            | 17           |
| 3/20/2013 | 18            | 20           | 19            | 19           |
| 3/21/2013 | 27            | 26           | 30            | 30           |
| 3/22/2013 | 49            | 48           | 50            | 48           |
| 3/23/2013 | 51            | 53           | 52            | 50           |
| 3/24/2013 | 16            | 17           | 17            | 16           |
| 3/25/2013 | 17            | 22           | 20            | 19           |
| 3/26/2013 | 26            | 28           | 29            | 45           |
| 3/27/2013 | 15            | 16           | 16            | 14           |
| 3/28/2013 | 11            | 12           | 12            | 11           |
| 3/29/2013 | 10            | 12           | 12            | 10           |
| 3/30/2013 | 14            | 15           | 14            | 14           |
| 3/31/2013 | 14            | 16           | 15            | 15           |

**Note 1:** Please refer to Table 3 for the raw hourly data and treatment of valid and invalid values. All values in the above table are at actual conditions.

**Note 2:** Days marked 'No Data' are days for which there is no hourly data.

**Note 3:** Days marked (---) are days for which there is either more than 7 hours of negative data points or more than 12 hours of invalid data points.



**Table 2: PM2.5 24-hour Time-Weighted Averages, All Sites  
(See Footnotes)**

All values are in units of micrograms per cubic meter.

| Date      | North Station | East Station | South Station | West Station |
|-----------|---------------|--------------|---------------|--------------|
| 3/1/2013  | 1.7           | 1.8          | 1.8           | 1.1          |
| 3/2/2013  | 0.7           | 2.2          | 1.5           | 0.1          |
| 3/3/2013  | 1.3           | 2.8          | 2.3           | 1.5          |
| 3/4/2013  | 2.5           | 3.1          | 4.2           | 2.3          |
| 3/5/2013  | 2.8           | 2.8          | 2.5           | 2            |
| 3/6/2013  | 4.5           | 4.3          | 5.5           | 4.6          |
| 3/7/2013  | 3             | 2.8          | 4.3           | 2.3          |
| 3/8/2013  | 2.2           | 2.6          | 2.2           | 1.1          |
| 3/9/2013  | 3.2           | 3.3          | 3.3           | 1.7          |
| 3/10/2013 | 2.8           | 3.3          | 3.8           | 2.6          |
| 3/11/2013 | 1.8           | 1.5          | 2             | 1.6          |
| 3/12/2013 | 1.8           | 2.6          | 3             | 11.5         |
| 3/13/2013 | 1.7           | 3            | 2.5           | 1.5          |
| 3/14/2013 | 1.9           | 2.3          | 2             | 0.5          |
| 3/15/2013 | 2.3           | 2.9          | 3.5           | 1.7          |
| 3/16/2013 | 4.9           | 5.6          | 6.2           | 5.1          |
| 3/17/2013 | 8             | 9.4          | 9.9           | 8.4          |
| 3/18/2013 | 3.5           | 5.6          | 5             | 4.3          |
| 3/19/2013 | 4.9           | 5.5          | 4.9           | 4.8          |
| 3/20/2013 | 5.1           | 6            | 5             | 5.1          |
| 3/21/2013 | 5             | 5.7          | 5.9           | 5.4          |
| 3/22/2013 | 12.3          | 11.7         | 11.1          | 9.9          |
| 3/23/2013 | 11.7          | 11.8         | 13.5          | 10.7         |
| 3/24/2013 | 6.1           | 6.2          | ---           | 5            |
| 3/25/2013 | 6.9           | 7.4          | ---           | 5.7          |
| 3/26/2013 | 7.6           | 9            | 7.6           | 14           |
| 3/27/2013 | 5.3           | 5.5          | 4.6           | 5.3          |
| 3/28/2013 | 3.9           | 5.2          | 4.2           | 3.3          |
| 3/29/2013 | 3.3           | 4.8          | 3.1           | 4            |
| 3/30/2013 | 4             | 5.6          | 5.2           | 4.6          |
| 3/31/2013 | 3.4           | 4.1          | 3.7           | 3.5          |

**Note 1:** Please refer to Table 3 for the raw hourly data and treatment of valid and invalid values. All values in the above table are at actual conditions.

**Note 2:** Days marked 'No Data' are days for which there is no hourly data.

**Note 3:** Days marked (---) are days for which there is either more than 7 hours of negative data points or more than 12 hours of invalid data points.



# Table 3

## Hourly BAM Data, All Stations

Please note the following:

1. PM10 and PM2.5 are at actual conditions.
2. Hours for which there are no BAM data are marked "---"
3. Data marked with **bold red** text is invalid due to either an error code produced by the BAM or hourly wind speed > 25 mph or an out-of-range concentration.
4. Data marked with **bold green** text is valid. However, this data is highlighted since there was either a "warning" error code or hourly shelter temperature change exceeding the instrument tolerance.
5. Data marked with 'Cal' indicates that the BAM was undergoing calibration. This data is excluded from the 24-hour average calculations.



## DESERT SUNLIGHT SOLAR FARM

### TABLE 3 - HOURLY BAM DATA

(Please refer to Table 3 cover page for additional details.)

All values are in units of milligrams per cubic meter.

| Date     | Hour | North Station |        | East Station |        | South Station |        | West Station |        |
|----------|------|---------------|--------|--------------|--------|---------------|--------|--------------|--------|
|          |      | PM10          | PM2.5  | PM10         | PM2.5  | PM10          | PM2.5  | PM10         | PM2.5  |
| 3/1/2013 | 0    | 0.004         | 0.004  | 0.008        | 0.005  | 0.006         | 0.002  | 0.000        | 0.003  |
| 3/1/2013 | 1    | 0.008         | 0.003  | 0.012        | 0.004  | 0.007         | 0.001  | 0.001        | 0.000  |
| 3/1/2013 | 2    | 0.009         | 0.004  | 0.012        | 0.001  | 0.005         | 0.002  | 0.002        | -0.001 |
| 3/1/2013 | 3    | 0.010         | 0.005  | 0.011        | 0.003  | 0.005         | 0.004  | 0.006        | 0.001  |
| 3/1/2013 | 4    | 0.009         | 0.003  | 0.011        | 0.004  | 0.006         | 0.004  | 0.005        | 0.004  |
| 3/1/2013 | 5    | 0.008         | 0.001  | 0.011        | 0.004  | 0.006         | 0.002  | 0.002        | 0.005  |
| 3/1/2013 | 6    | 0.008         | 0.000  | 0.012        | 0.004  | 0.007         | 0.002  | 0.003        | 0.003  |
| 3/1/2013 | 7    | 0.008         | 0.003  | 0.009        | 0.002  | 0.018         | 0.004  | 0.000        | 0.004  |
| 3/1/2013 | 8    | 0.009         | 0.006  | 0.010        | -0.001 | 0.009         | 0.003  | 0.000        | 0.001  |
| 3/1/2013 | 9    | 0.009         | 0.003  | 0.010        | -0.003 | 0.012         | 0.002  | 0.000        | -0.004 |
| 3/1/2013 | 10   | 0.011         | 0.002  | 0.008        | -0.001 | 0.010         | 0.002  | 0.001        | -0.002 |
| 3/1/2013 | 11   | 0.008         | 0.001  | 0.006        | 0.000  | 0.004         | 0.001  | 0.002        | 0.001  |
| 3/1/2013 | 12   | 0.006         | -0.001 | 0.004        | 0.001  | 0.001         | 0.000  | -0.002       | -0.001 |
| 3/1/2013 | 13   | 0.009         | -0.002 | 0.004        | 0.001  | 0.002         | 0.001  | -0.002       | -0.001 |
| 3/1/2013 | 14   | 0.009         | -0.001 | 0.005        | 0.000  | 0.002         | 0.001  | -0.001       | 0.001  |
| 3/1/2013 | 15   | 0.006         | 0.001  | 0.005        | 0.001  | 0.000         | 0.001  | 0.000        | 0.002  |
| 3/1/2013 | 16   | 0.007         | 0.000  | 0.002        | 0.001  | -0.002        | 0.003  | 0.001        | 0.001  |
| 3/1/2013 | 17   | 0.049         | -0.001 | 0.000        | 0.001  | 0.000         | 0.000  | 0.000        | 0.000  |
| 3/1/2013 | 18   | 0.023         | 0.002  | 0.003        | 0.001  | 0.003         | -0.002 | 0.001        | 0.003  |
| 3/1/2013 | 19   | 0.013         | 0.000  | 0.030        | 0.002  | 0.004         | 0.002  | 0.004        | 0.002  |
| 3/1/2013 | 20   | 0.027         | 0.000  | 0.007        | 0.004  | 0.005         | 0.003  | 0.002        | 0.001  |
| 3/1/2013 | 21   | 0.011         | 0.004  | 0.009        | 0.004  | 0.004         | -0.001 | 0.001        | 0.001  |
| 3/1/2013 | 22   | 0.018         | 0.003  | 0.009        | 0.003  | 0.005         | 0.002  | 0.001        | 0.001  |
| 3/1/2013 | 23   | 0.003         | 0.001  | 0.005        | 0.003  | 0.003         | 0.004  | 0.000        | 0.001  |
| 3/2/2013 | 0    | 0.005         | -0.001 | 0.005        | 0.004  | 0.001         | 0.001  | 0.002        | 0.002  |
| 3/2/2013 | 1    | 0.006         | 0.001  | 0.020        | 0.004  | 0.003         | 0.001  | 0.003        | 0.001  |
| 3/2/2013 | 2    | 0.006         | 0.002  | 0.005        | 0.002  | 0.005         | 0.003  | 0.001        | -0.001 |
| 3/2/2013 | 3    | 0.005         | 0.001  | 0.006        | 0.001  | 0.004         | 0.005  | 0.001        | -0.002 |
| 3/2/2013 | 4    | 0.004         | 0.001  | 0.005        | 0.004  | 0.003         | 0.003  | 0.000        | 0.000  |
| 3/2/2013 | 5    | 0.006         | -0.001 | 0.008        | 0.006  | 0.007         | 0.002  | 0.000        | 0.001  |
| 3/2/2013 | 6    | 0.005         | 0.000  | 0.009        | 0.005  | 0.007         | 0.003  | 0.002        | 0.001  |
| 3/2/2013 | 7    | 0.002         | 0.003  | 0.006        | 0.004  | 0.006         | 0.002  | 0.004        | 0.000  |
| 3/2/2013 | 8    | 0.002         | 0.003  | 0.007        | 0.002  | 0.002         | 0.000  | 0.004        | -0.001 |
| 3/2/2013 | 9    | 0.004         | 0.002  | 0.006        | -0.001 | 0.000         | -0.002 | 0.001        | -0.002 |
| 3/2/2013 | 10   | 0.004         | 0.000  | 0.002        | 0.000  | 0.001         | -0.001 | -0.001       | -0.001 |
| 3/2/2013 | 11   | 0.000         | 0.000  | -0.001       | 0.000  | 0.001         | 0.000  | -0.002       | 0.000  |
| 3/2/2013 | 12   | 0.030         | -0.001 | -0.003       | -0.001 | 0.000         | -0.002 | -0.001       | 0.000  |
| 3/2/2013 | 13   | 0.000         | -0.001 | -0.002       | -0.001 | 0.000         | 0.002  | 0.000        | 0.000  |
| 3/2/2013 | 14   | 0.003         | -0.001 | 0.002        | 0.001  | 0.002         | 0.004  | 0.002        | 0.000  |
| 3/2/2013 | 15   | 0.005         | 0.000  | 0.005        | 0.001  | 0.002         | 0.003  | 0.001        | 0.001  |
| 3/2/2013 | 16   | 0.007         | 0.001  | 0.001        | -0.001 | 0.002         | 0.002  | 0.000        | 0.001  |
| 3/2/2013 | 17   | 0.080         | 0.002  | 0.000        | -0.001 | 0.001         | 0.000  | 0.000        | 0.002  |
| 3/2/2013 | 18   | 0.005         | 0.004  | 0.002        | 0.003  | 0.003         | -0.001 | 0.004        | 0.001  |
| 3/2/2013 | 19   | 0.004         | 0.003  | 0.005        | 0.005  | 0.004         | 0.003  | 0.006        | -0.001 |
| 3/2/2013 | 20   | 0.004         | 0.001  | 0.006        | 0.005  | 0.005         | 0.003  | 0.001        | 0.001  |
| 3/2/2013 | 21   | 0.005         | -0.002 | 0.006        | 0.004  | 0.003         | 0.001  | -0.001       | 0.000  |
| 3/2/2013 | 22   | 0.004         | -0.001 | 0.017        | 0.004  | 0.001         | 0.001  | -0.001       | -0.001 |
| 3/2/2013 | 23   | 0.003         | 0.001  | 0.009        | 0.002  | 0.004         | 0.002  | 0.000        | 0.001  |



## DESERT SUNLIGHT SOLAR FARM

### TABLE 3 - HOURLY BAM DATA

(Please refer to Table 3 cover page for additional details.)

All values are in units of milligrams per cubic meter.

| Date     | Hour | North Station |        | East Station |        | South Station |        | West Station |        |
|----------|------|---------------|--------|--------------|--------|---------------|--------|--------------|--------|
|          |      | PM10          | PM2.5  | PM10         | PM2.5  | PM10          | PM2.5  | PM10         | PM2.5  |
| 3/3/2013 | 0    | 0.029         | 0.003  | 0.028        | 0.004  | 0.005         | 0.005  | 0.000        | 0.001  |
| 3/3/2013 | 1    | 0.003         | 0.004  | 0.010        | 0.005  | 0.004         | 0.003  | 0.001        | 0.002  |
| 3/3/2013 | 2    | 0.004         | 0.004  | 0.007        | 0.002  | 0.003         | 0.000  | 0.002        | 0.001  |
| 3/3/2013 | 3    | 0.006         | 0.004  | 0.007        | 0.000  | 0.004         | -0.001 | 0.001        | 0.001  |
| 3/3/2013 | 4    | 0.008         | 0.001  | 0.008        | 0.001  | 0.008         | 0.000  | 0.001        | 0.000  |
| 3/3/2013 | 5    | 0.010         | 0.000  | 0.006        | 0.001  | 0.009         | -0.001 | 0.005        | 0.001  |
| 3/3/2013 | 6    | 0.011         | 0.001  | 0.020        | 0.002  | 0.008         | -0.001 | 0.004        | 0.004  |
| 3/3/2013 | 7    | 0.010         | 0.001  | 0.009        | 0.006  | 0.009         | 0.002  | 0.000        | 0.003  |
| 3/3/2013 | 8    | 0.011         | 0.002  | 0.011        | 0.003  | 0.010         | 0.004  | 0.002        | 0.001  |
| 3/3/2013 | 9    | 0.009         | 0.001  | 0.013        | 0.003  | 0.009         | 0.003  | 0.004        | 0.002  |
| 3/3/2013 | 10   | 0.006         | -0.001 | 0.014        | 0.004  | 0.008         | 0.003  | 0.002        | 0.002  |
| 3/3/2013 | 11   | 0.059         | -0.001 | 0.013        | 0.001  | 0.009         | 0.001  | 0.003        | 0.000  |
| 3/3/2013 | 12   | 0.006         | -0.001 | 0.009        | 0.000  | 0.006         | 0.002  | 0.001        | -0.001 |
| 3/3/2013 | 13   | 0.008         | -0.003 | 0.005        | 0.002  | 0.004         | 0.002  | 0.001        | 0.000  |
| 3/3/2013 | 14   | 0.015         | -0.001 | 0.009        | 0.001  | 0.009         | 0.002  | 0.003        | -0.001 |
| 3/3/2013 | 15   | 0.006         | 0.001  | 0.018        | 0.000  | 0.012         | 0.004  | 0.002        | -0.003 |
| 3/3/2013 | 16   | 0.010         | 0.002  | 0.036        | 0.002  | 0.016         | 0.002  | 0.002        | -0.001 |
| 3/3/2013 | 17   | 0.020         | 0.000  | 0.021        | 0.003  | 0.018         | 0.001  | 0.002        | 0.001  |
| 3/3/2013 | 18   | 0.033         | 0.000  | 0.039        | 0.005  | 0.036         | 0.004  | 0.008        | 0.003  |
| 3/3/2013 | 19   | 0.036         | 0.004  | 0.037        | 0.006  | 0.037         | 0.006  | 0.013        | 0.008  |
| 3/3/2013 | 20   | 0.032         | 0.004  | 0.058        | 0.007  | 0.034         | 0.004  | 0.011        | 0.007  |
| 3/3/2013 | 21   | 0.037         | 0.002  | 0.036        | 0.005  | 0.034         | 0.001  | 0.011        | 0.001  |
| 3/3/2013 | 22   | 0.021         | 0.002  | 0.066        | 0.003  | 0.033         | 0.004  | 0.008        | 0.001  |
| 3/3/2013 | 23   | 0.016         | 0.003  | 0.022        | 0.001  | 0.015         | 0.006  | 0.004        | 0.002  |
| 3/4/2013 | 0    | 0.012         | 0.004  | 0.011        | 0.001  | 0.012         | 0.005  | 0.003        | 0.001  |
| 3/4/2013 | 1    | 0.011         | 0.005  | 0.011        | 0.002  | 0.009         | 0.004  | 0.002        | 0.002  |
| 3/4/2013 | 2    | 0.012         | 0.004  | 0.021        | 0.003  | 0.012         | 0.005  | 0.004        | 0.004  |
| 3/4/2013 | 3    | 0.012         | 0.003  | 0.013        | 0.005  | 0.013         | 0.005  | 0.004        | 0.003  |
| 3/4/2013 | 4    | 0.030         | 0.004  | 0.030        | 0.007  | 0.029         | 0.007  | 0.005        | 0.005  |
| 3/4/2013 | 5    | 0.028         | 0.007  | 0.038        | 0.007  | 0.028         | 0.006  | 0.008        | 0.007  |
| 3/4/2013 | 6    | 0.019         | 0.006  | 0.019        | 0.005  | 0.017         | 0.005  | 0.007        | 0.009  |
| 3/4/2013 | 7    | 0.030         | 0.004  | 0.017        | 0.005  | 0.024         | 0.006  | 0.007        | 0.006  |
| 3/4/2013 | 8    | 0.040         | 0.003  | 0.014        | 0.005  | 0.016         | 0.006  | 0.008        | 0.000  |
| 3/4/2013 | 9    | 0.036         | 0.005  | 0.017        | 0.003  | 0.023         | 0.006  | 0.006        | 0.001  |
| 3/4/2013 | 10   | 0.336         | 0.006  | 0.021        | 0.003  | 0.012         | 0.004  | 0.003        | 0.001  |
| 3/4/2013 | 11   | 0.022         | 0.002  | 0.010        | 0.005  | 0.028         | 0.003  | 0.001        | 0.001  |
| 3/4/2013 | 12   | 0.010         | -0.003 | 0.008        | 0.004  | 0.010         | 0.004  | 0.003        | 0.001  |
| 3/4/2013 | 13   | 0.006         | -0.003 | 0.003        | -0.001 | 0.009         | 0.003  | 0.003        | 0.001  |
| 3/4/2013 | 14   | 0.006         | -0.001 | 0.002        | 0.001  | 0.005         | 0.004  | 0.002        | -0.001 |
| 3/4/2013 | 15   | 0.006         | 0.000  | 0.005        | 0.003  | 0.009         | 0.003  | 0.003        | -0.001 |
| 3/4/2013 | 16   | 0.006         | 0.002  | 0.003        | 0.001  | 0.010         | 0.005  | 0.001        | 0.003  |
| 3/4/2013 | 17   | 0.007         | 0.002  | 0.003        | 0.003  | 0.005         | 0.004  | 0.000        | 0.002  |
| 3/4/2013 | 18   | 0.033         | 0.002  | 0.006        | 0.004  | 0.004         | 0.001  | 0.000        | 0.000  |
| 3/4/2013 | 19   | 0.008         | 0.001  | 0.007        | 0.001  | 0.006         | 0.003  | 0.000        | 0.003  |
| 3/4/2013 | 20   | 0.005         | -0.001 | 0.008        | 0.003  | 0.008         | 0.005  | 0.000        | 0.002  |
| 3/4/2013 | 21   | 0.004         | 0.002  | 0.009        | 0.003  | 0.007         | 0.003  | 0.000        | 0.000  |
| 3/4/2013 | 22   | 0.005         | 0.002  | 0.010        | 0.000  | 0.005         | 0.002  | 0.001        | 0.002  |
| 3/4/2013 | 23   | 0.003         | 0.003  | 0.009        | 0.001  | 0.004         | 0.002  | 0.002        | 0.002  |





## DESERT SUNLIGHT SOLAR FARM

### TABLE 3 - HOURLY BAM DATA

(Please refer to Table 3 cover page for additional details.)

All values are in units of milligrams per cubic meter.

| Date     | Hour | North Station |        | East Station |       | South Station |        | West Station |        |
|----------|------|---------------|--------|--------------|-------|---------------|--------|--------------|--------|
|          |      | PM10          | PM2.5  | PM10         | PM2.5 | PM10          | PM2.5  | PM10         | PM2.5  |
| 3/5/2013 | 0    | 0.005         | 0.002  | 0.007        | 0.001 | 0.005         | 0.002  | 0.004        | 0.001  |
| 3/5/2013 | 1    | 0.005         | 0.003  | 0.006        | 0.001 | 0.004         | 0.002  | 0.003        | 0.004  |
| 3/5/2013 | 2    | 0.015         | 0.005  | 0.007        | 0.002 | 0.006         | 0.002  | 0.003        | 0.006  |
| 3/5/2013 | 3    | 0.008         | 0.005  | 0.008        | 0.003 | 0.007         | 0.003  | 0.003        | 0.002  |
| 3/5/2013 | 4    | 0.008         | 0.003  | 0.005        | 0.002 | 0.002         | 0.001  | -0.001       | 0.000  |
| 3/5/2013 | 5    | 0.008         | 0.004  | 0.005        | 0.001 | 0.002         | 0.000  | 0.001        | 0.001  |
| 3/5/2013 | 6    | 0.006         | 0.005  | 0.007        | 0.002 | 0.004         | 0.003  | 0.003        | 0.004  |
| 3/5/2013 | 7    | 0.005         | 0.003  | 0.005        | 0.003 | 0.008         | 0.004  | 0.000        | 0.004  |
| 3/5/2013 | 8    | 0.006         | 0.003  | 0.006        | 0.005 | 0.011         | 0.002  | 0.001        | 0.004  |
| 3/5/2013 | 9    | 0.005         | 0.002  | 0.006        | 0.004 | 0.010         | 0.000  | 0.005        | 0.002  |
| 3/5/2013 | 10   | 0.016         | -0.002 | 0.003        | 0.003 | 0.009         | 0.000  | 0.004        | -0.002 |
| 3/5/2013 | 11   | 0.007         | -0.001 | 0.004        | 0.002 | 0.007         | 0.002  | 0.001        | -0.001 |
| 3/5/2013 | 12   | 0.005         | 0.001  | 0.004        | 0.001 | 0.007         | 0.002  | 0.002        | 0.000  |
| 3/5/2013 | 13   | 0.006         | 0.002  | 0.003        | 0.001 | 0.006         | 0.001  | 0.001        | -0.003 |
| 3/5/2013 | 14   | 0.007         | 0.002  | 0.003        | 0.000 | 0.004         | -0.001 | -0.002       | -0.001 |
| 3/5/2013 | 15   | 0.005         | 0.001  | 0.004        | 0.002 | 0.004         | -0.001 | -0.001       | 0.001  |
| 3/5/2013 | 16   | 0.006         | 0.004  | 0.007        | 0.002 | 0.007         | 0.001  | 0.001        | 0.002  |
| 3/5/2013 | 17   | 0.009         | 0.002  | 0.009        | 0.002 | 0.011         | 0.003  | 0.003        | 0.002  |
| 3/5/2013 | 18   | 0.012         | 0.001  | 0.010        | 0.004 | 0.011         | 0.006  | 0.005        | 0.003  |
| 3/5/2013 | 19   | 0.030         | 0.005  | 0.017        | 0.005 | 0.016         | 0.006  | 0.004        | 0.003  |
| 3/5/2013 | 20   | 0.015         | 0.006  | 0.012        | 0.005 | 0.014         | 0.006  | 0.002        | 0.003  |
| 3/5/2013 | 21   | 0.022         | 0.005  | 0.019        | 0.006 | 0.016         | 0.005  | 0.001        | 0.004  |
| 3/5/2013 | 22   | 0.018         | 0.004  | 0.021        | 0.005 | 0.022         | 0.005  | 0.003        | 0.005  |
| 3/5/2013 | 23   | 0.016         | 0.003  | 0.015        | 0.005 | 0.018         | 0.006  | 0.007        | 0.004  |
| 3/6/2013 | 0    | 0.022         | 0.002  | 0.021        | 0.005 | 0.021         | 0.004  | 0.006        | 0.005  |
| 3/6/2013 | 1    | 0.064         | 0.005  | 0.030        | 0.005 | 0.019         | 0.005  | 0.005        | 0.006  |
| 3/6/2013 | 2    | 0.069         | 0.007  | 0.024        | 0.006 | 0.018         | 0.008  | 0.005        | 0.005  |
| 3/6/2013 | 3    | 0.017         | 0.008  | 0.017        | 0.007 | 0.017         | 0.007  | 0.005        | 0.004  |
| 3/6/2013 | 4    | 0.021         | 0.008  | 0.020        | 0.006 | 0.019         | 0.008  | 0.006        | 0.006  |
| 3/6/2013 | 5    | 0.024         | 0.007  | 0.022        | 0.006 | 0.022         | 0.008  | 0.006        | 0.008  |
| 3/6/2013 | 6    | 0.017         | 0.007  | 0.017        | 0.005 | 0.023         | 0.008  | 0.005        | 0.007  |
| 3/6/2013 | 7    | 0.014         | 0.007  | 0.019        | 0.006 | 0.027         | 0.007  | ---          | ---    |
| 3/6/2013 | 8    | 0.014         | 0.006  | 0.019        | 0.006 | 0.031         | 0.006  | 0.985        | 0.985  |
| 3/6/2013 | 9    | 0.012         | 0.004  | 0.010        | 0.003 | 0.011         | 0.003  | -0.002       | -0.013 |
| 3/6/2013 | 10   | 0.011         | 0.004  | 0.009        | 0.002 | 0.011         | 0.002  | -0.001       | -0.007 |
| 3/6/2013 | 11   | 0.010         | 0.002  | 0.007        | 0.003 | 0.008         | 0.004  | 0.002        | 0.002  |
| 3/6/2013 | 12   | 0.010         | 0.002  | 0.031        | 0.003 | 0.009         | 0.003  | 0.002        | 0.003  |
| 3/6/2013 | 13   | 0.011         | 0.003  | 0.011        | 0.002 | 0.011         | 0.003  | 0.003        | 0.004  |
| 3/6/2013 | 14   | 0.011         | 0.002  | 0.011        | 0.002 | 0.017         | 0.003  | 0.006        | 0.005  |
| 3/6/2013 | 15   | 0.009         | 0.001  | 0.011        | 0.003 | 0.014         | 0.985  | 0.002        | 0.003  |
| 3/6/2013 | 16   | 0.009         | 0.001  | 0.016        | 0.002 | 0.985         | 0.007  | 0.000        | 0.002  |
| 3/6/2013 | 17   | 0.012         | 0.004  | 0.020        | 0.003 | 0.022         | 0.009  | 0.004        | 0.004  |
| 3/6/2013 | 18   | 0.021         | 0.005  | 0.021        | 0.005 | 0.017         | 0.005  | 0.005        | 0.005  |
| 3/6/2013 | 19   | 0.015         | 0.005  | 0.019        | 0.006 | 0.018         | 0.007  | 0.006        | 0.004  |
| 3/6/2013 | 20   | 0.014         | 0.005  | 0.020        | 0.005 | 0.014         | 0.008  | 0.006        | 0.005  |
| 3/6/2013 | 21   | 0.014         | 0.004  | 0.018        | 0.002 | 0.013         | 0.004  | 0.006        | 0.003  |
| 3/6/2013 | 22   | 0.023         | 0.004  | 0.019        | 0.004 | 0.013         | 0.002  | 0.005        | 0.004  |
| 3/6/2013 | 23   | 0.017         | 0.004  | 0.018        | 0.006 | 0.013         | 0.005  | 0.004        | 0.006  |



## DESERT SUNLIGHT SOLAR FARM

### TABLE 3 - HOURLY BAM DATA

(Please refer to Table 3 cover page for additional details.)

All values are in units of milligrams per cubic meter.

| Date     | Hour | North Station |        | East Station |               | South Station |              | West Station  |              |
|----------|------|---------------|--------|--------------|---------------|---------------|--------------|---------------|--------------|
|          |      | PM10          | PM2.5  | PM10         | PM2.5         | PM10          | PM2.5        | PM10          | PM2.5        |
| 3/7/2013 | 0    | 0.019         | 0.006  | 0.016        | 0.005         | 0.013         | 0.006        | 0.003         | 0.006        |
| 3/7/2013 | 1    | 0.014         | 0.007  | 0.016        | 0.003         | 0.013         | 0.006        | 0.003         | 0.004        |
| 3/7/2013 | 2    | 0.013         | 0.004  | 0.013        | 0.005         | 0.011         | 0.006        | 0.005         | 0.004        |
| 3/7/2013 | 3    | 0.010         | 0.002  | 0.012        | 0.006         | 0.011         | 0.005        | 0.003         | 0.003        |
| 3/7/2013 | 4    | 0.005         | 0.004  | 0.011        | 0.003         | 0.008         | 0.003        | 0.003         | 0.003        |
| 3/7/2013 | 5    | 0.004         | 0.005  | 0.012        | 0.002         | 0.005         | 0.004        | 0.003         | 0.003        |
| 3/7/2013 | 6    | 0.004         | 0.006  | 0.009        | 0.003         | 0.006         | 0.005        | 0.002         | 0.001        |
| 3/7/2013 | 7    | 0.005         | 0.005  | 0.008        | 0.004         | 0.006         | 0.004        | 0.002         | 0.002        |
| 3/7/2013 | 8    | 0.006         | 0.002  | 0.007        | 0.002         | 0.008         | 0.002        | 0.003         | 0.002        |
| 3/7/2013 | 9    | 0.005         | 0.000  | 0.004        | 0.000         | 0.008         | 0.002        | 0.009         | 0.001        |
| 3/7/2013 | 10   | 0.005         | -0.001 | 0.002        | 0.000         | 0.005         | 0.001        | 0.007         | -0.001       |
| 3/7/2013 | 11   | 0.002         | -0.002 | -0.015       | -0.003        | 0.006         | 0.002        | -0.001        | -0.002       |
| 3/7/2013 | 12   | 0.003         | -0.001 | <b>0.985</b> | <b>-0.005</b> | 0.004         | 0.004        | 0.001         | 0.001        |
| 3/7/2013 | 13   | 0.006         | 0.004  | 0.010        | 0.001         | 0.005         | 0.002        | 0.005         | 0.001        |
| 3/7/2013 | 14   | 0.003         | 0.005  | 0.012        | 0.006         | 0.007         | 0.001        | 0.005         | -0.001       |
| 3/7/2013 | 15   | 0.003         | 0.002  | 0.012        | 0.003         | 0.009         | 0.003        | 0.001         | 0.002        |
| 3/7/2013 | 16   | 0.005         | 0.000  | 0.011        | 0.002         | 0.009         | 0.002        | 0.003         | 0.004        |
| 3/7/2013 | 17   | 0.006         | 0.001  | 0.010        | 0.002         | 0.008         | 0.003        | 0.002         | 0.003        |
| 3/7/2013 | 18   | 0.007         | 0.005  | 0.010        | 0.002         | 0.011         | 0.007        | 0.001         | 0.003        |
| 3/7/2013 | 19   | 0.009         | 0.003  | 0.011        | 0.005         | 0.013         | 0.009        | 0.002         | 0.004        |
| 3/7/2013 | 20   | 0.010         | 0.003  | 0.011        | 0.004         | 0.010         | 0.008        | 0.003         | 0.004        |
| 3/7/2013 | 21   | 0.012         | 0.005  | 0.011        | 0.004         | 0.009         | 0.006        | 0.003         | 0.004        |
| 3/7/2013 | 22   | 0.012         | 0.003  | 0.011        | 0.003         | 0.010         | 0.007        | 0.003         | 0.004        |
| 3/7/2013 | 23   | 0.010         | 0.003  | 0.011        | 0.002         | 0.009         | 0.006        | 0.002         | 0.001        |
| 3/8/2013 | 0    | 0.026         | 0.003  | 0.009        | 0.003         | 0.008         | 0.000        | 0.001         | 0.000        |
| 3/8/2013 | 1    | 0.010         | 0.003  | 0.010        | 0.005         | 0.006         | -0.001       | 0.003         | 0.004        |
| 3/8/2013 | 2    | 0.012         | 0.004  | 0.012        | 0.003         | <b>0.005</b>  | <b>0.003</b> | 0.004         | 0.004        |
| 3/8/2013 | 3    | 0.012         | 0.003  | 0.011        | 0.001         | 0.006         | 0.003        | <b>0.003</b>  | <b>0.001</b> |
| 3/8/2013 | 4    | 0.033         | 0.006  | 0.011        | 0.002         | 0.006         | 0.001        | 0.004         | 0.002        |
| 3/8/2013 | 5    | 0.004         | 0.007  | 0.008        | 0.002         | 0.005         | 0.004        | 0.002         | 0.000        |
| 3/8/2013 | 6    | 0.006         | 0.003  | 0.006        | 0.001         | 0.007         | 0.005        | <b>0.001</b>  | <b>0.000</b> |
| 3/8/2013 | 7    | 0.005         | 0.001  | 0.006        | 0.000         | 0.008         | 0.004        | <b>0.001</b>  | <b>0.002</b> |
| 3/8/2013 | 8    | 0.003         | 0.003  | 0.005        | 0.002         | 0.004         | 0.004        | 0.001         | 0.002        |
| 3/8/2013 | 9    | 0.002         | 0.004  | 0.008        | 0.003         | 0.004         | 0.004        | 0.001         | 0.001        |
| 3/8/2013 | 10   | 0.001         | 0.002  | 0.009        | 0.002         | 0.003         | 0.004        | <b>-0.002</b> | <b>0.001</b> |
| 3/8/2013 | 11   | 0.001         | 0.001  | 0.003        | 0.002         | 0.001         | 0.000        | -0.001        | 0.002        |
| 3/8/2013 | 12   | 0.002         | 0.000  | 0.004        | 0.002         | 0.002         | 0.000        | -0.002        | 0.000        |
| 3/8/2013 | 13   | 0.000         | 0.000  | 0.005        | 0.000         | 0.003         | -0.002       | 0.000         | -0.002       |
| 3/8/2013 | 14   | 0.001         | 0.001  | 0.006        | 0.001         | 0.006         | -0.002       | -0.002        | 0.002        |
| 3/8/2013 | 15   | 0.004         | 0.001  | 0.008        | 0.003         | 0.007         | 0.002        | -0.004        | 0.001        |
| 3/8/2013 | 16   | 0.008         | 0.000  | 0.006        | 0.005         | 0.006         | 0.001        | -0.001        | -0.001       |
| 3/8/2013 | 17   | 0.009         | 0.000  | 0.005        | 0.005         | 0.006         | 0.002        | 0.001         | 0.000        |
| 3/8/2013 | 18   | 0.009         | 0.000  | 0.005        | 0.003         | 0.006         | 0.002        | 0.002         | 0.001        |
| 3/8/2013 | 19   | 0.007         | 0.000  | 0.005        | 0.005         | <b>0.006</b>  | <b>0.001</b> | 0.004         | 0.000        |
| 3/8/2013 | 20   | 0.003         | 0.002  | 0.005        | 0.004         | 0.005         | 0.002        | 0.002         | 0.001        |
| 3/8/2013 | 21   | 0.006         | 0.002  | 0.007        | 0.003         | 0.002         | 0.004        | -0.001        | 0.003        |
| 3/8/2013 | 22   | 0.004         | 0.003  | 0.007        | 0.003         | 0.001         | 0.006        | 0.000         | 0.001        |
| 3/8/2013 | 23   | 0.004         | 0.003  | 0.004        | 0.003         | 0.000         | 0.005        | 0.001         | 0.001        |



## DESERT SUNLIGHT SOLAR FARM

### TABLE 3 - HOURLY BAM DATA

(Please refer to Table 3 cover page for additional details.)

All values are in units of milligrams per cubic meter.

| Date      | Hour | North Station |        | East Station |        | South Station |        | West Station |        |
|-----------|------|---------------|--------|--------------|--------|---------------|--------|--------------|--------|
|           |      | PM10          | PM2.5  | PM10         | PM2.5  | PM10          | PM2.5  | PM10         | PM2.5  |
| 3/9/2013  | 0    | 0.011         | 0.002  | 0.003        | 0.003  | 0.004         | 0.004  | 0.000        | 0.002  |
| 3/9/2013  | 1    | 0.008         | 0.003  | 0.005        | 0.000  | 0.003         | 0.002  | -0.001       | 0.001  |
| 3/9/2013  | 2    | 0.002         | 0.001  | 0.006        | 0.000  | 0.002         | 0.002  | 0.001        | 0.001  |
| 3/9/2013  | 3    | 0.001         | 0.000  | 0.003        | 0.002  | 0.000         | 0.003  | 0.003        | 0.001  |
| 3/9/2013  | 4    | 0.002         | 0.001  | 0.001        | 0.001  | 0.001         | 0.002  | 0.003        | 0.002  |
| 3/9/2013  | 5    | 0.004         | 0.002  | 0.003        | 0.002  | 0.004         | 0.003  | 0.001        | 0.003  |
| 3/9/2013  | 6    | 0.004         | 0.002  | 0.004        | 0.004  | 0.005         | 0.005  | 0.000        | 0.002  |
| 3/9/2013  | 7    | 0.003         | 0.001  | 0.003        | 0.004  | 0.003         | 0.005  | 0.002        | 0.001  |
| 3/9/2013  | 8    | 0.003         | -0.001 | 0.002        | 0.004  | 0.002         | 0.002  | 0.003        | 0.000  |
| 3/9/2013  | 9    | 0.001         | 0.002  | 0.001        | 0.001  | 0.000         | 0.002  | 0.002        | -0.001 |
| 3/9/2013  | 10   | 0.002         | 0.006  | 0.003        | 0.000  | 0.002         | 0.001  | 0.000        | 0.000  |
| 3/9/2013  | 11   | 0.008         | 0.006  | 0.007        | 0.002  | 0.006         | 0.000  | 0.003        | 0.002  |
| 3/9/2013  | 12   | 0.009         | 0.004  | 0.009        | 0.003  | 0.010         | 0.004  | 0.002        | 0.002  |
| 3/9/2013  | 13   | 0.010         | 0.004  | 0.015        | 0.004  | 0.021         | 0.006  | 0.002        | -0.001 |
| 3/9/2013  | 14   | 0.011         | 0.006  | 0.012        | 0.004  | 0.011         | 0.005  | 0.004        | 0.000  |
| 3/9/2013  | 15   | 0.009         | 0.005  | 0.018        | 0.004  | 0.027         | 0.004  | 0.004        | 0.005  |
| 3/9/2013  | 16   | 0.010         | 0.003  | 0.012        | 0.005  | 0.031         | 0.005  | 0.005        | 0.003  |
| 3/9/2013  | 17   | 0.010         | 0.004  | 0.011        | 0.004  | 0.020         | 0.004  | 0.003        | 0.001  |
| 3/9/2013  | 18   | 0.009         | 0.004  | 0.010        | 0.007  | -0.001        | 0.002  | 0.002        | 0.002  |
| 3/9/2013  | 19   | 0.006         | 0.003  | 0.010        | 0.006  | 0.002         | 0.002  | 0.003        | 0.003  |
| 3/9/2013  | 20   | 0.007         | 0.004  | 0.011        | 0.003  | 0.005         | 0.003  | 0.004        | 0.003  |
| 3/9/2013  | 21   | 0.009         | 0.004  | 0.011        | 0.004  | 0.007         | 0.005  | 0.003        | 0.003  |
| 3/9/2013  | 22   | 0.008         | 0.005  | 0.008        | 0.006  | 0.009         | 0.004  | 0.002        | 0.003  |
| 3/9/2013  | 23   | 0.010         | 0.006  | 0.007        | 0.005  | 0.010         | 0.003  | 0.001        | 0.002  |
| 3/10/2013 | 0    | 0.011         | 0.004  | 0.008        | 0.003  | 0.012         | 0.006  | 0.004        | 0.002  |
| 3/10/2013 | 1    | 0.013         | 0.005  | 0.022        | 0.004  | 0.016         | 0.005  | 0.007        | 0.003  |
| 3/10/2013 | 2    | 0.023         | 0.006  | 0.021        | 0.006  | 0.023         | 0.003  | 0.007        | 0.005  |
| 3/10/2013 | 3    | 0.042         | 0.008  | 0.039        | 0.006  | 0.039         | 0.006  | 0.010        | 0.006  |
| 3/10/2013 | 4    | 0.033         | 0.008  | 0.038        | 0.006  | 0.034         | 0.008  | 0.012        | 0.006  |
| 3/10/2013 | 5    | 0.029         | 0.005  | 0.032        | 0.006  | 0.031         | 0.009  | 0.010        | 0.007  |
| 3/10/2013 | 6    | 0.016         | 0.004  | 0.023        | 0.005  | 0.026         | 0.008  | 0.004        | 0.008  |
| 3/10/2013 | 7    | 0.014         | 0.003  | 0.014        | 0.002  | 0.012         | 0.003  | 0.000        | 0.006  |
| 3/10/2013 | 8    | 0.010         | 0.002  | 0.013        | 0.002  | 0.011         | 0.003  | 0.003        | 0.003  |
| 3/10/2013 | 9    | 0.006         | 0.000  | 0.011        | 0.002  | 0.009         | 0.006  | 0.005        | 0.002  |
| 3/10/2013 | 10   | 0.018         | 0.001  | 0.011        | 0.001  | 0.021         | 0.004  | 0.004        | 0.001  |
| 3/10/2013 | 11   | 0.011         | 0.004  | 0.013        | -0.001 | 0.020         | 0.001  | 0.003        | 0.002  |
| 3/10/2013 | 12   | 0.018         | 0.002  | 0.011        | 0.001  | 0.011         | 0.001  | 0.003        | 0.003  |
| 3/10/2013 | 13   | 0.006         | 0.000  | 0.007        | 0.003  | 0.010         | 0.001  | 0.003        | 0.001  |
| 3/10/2013 | 14   | 0.008         | 0.000  | 0.007        | 0.005  | 0.008         | 0.002  | 0.004        | 0.002  |
| 3/10/2013 | 15   | 0.008         | 0.000  | 0.009        | 0.003  | 0.007         | 0.004  | 0.005        | 0.002  |
| 3/10/2013 | 16   | 0.008         | 0.001  | 0.008        | -0.001 | 0.006         | 0.003  | -0.001       | 0.002  |
| 3/10/2013 | 17   | 0.010         | 0.000  | 0.009        | 0.000  | 0.006         | 0.003  | -0.004       | 0.001  |
| 3/10/2013 | 18   | 0.008         | 0.001  | 0.011        | 0.004  | 0.006         | 0.006  | -0.002       | -0.002 |
| 3/10/2013 | 19   | 0.006         | 0.003  | 0.012        | 0.005  | 0.006         | 0.001  | 0.003        | 0.000  |
| 3/10/2013 | 20   | 0.004         | 0.003  | 0.012        | 0.003  | 0.007         | -0.001 | 0.003        | 0.001  |
| 3/10/2013 | 21   | 0.004         | 0.004  | 0.011        | 0.004  | 0.007         | 0.003  | 0.003        | 0.000  |
| 3/10/2013 | 22   | 0.005         | 0.001  | 0.009        | 0.006  | 0.006         | 0.003  | 0.005        | 0.001  |
| 3/10/2013 | 23   | 0.007         | 0.002  | 0.008        | 0.004  | 0.007         | 0.004  | 0.003        | 0.001  |



## DESERT SUNLIGHT SOLAR FARM

### TABLE 3 - HOURLY BAM DATA

(Please refer to Table 3 cover page for additional details.)

All values are in units of milligrams per cubic meter.

| Date      | Hour | North Station |        | East Station |        | South Station |        | West Station |        |
|-----------|------|---------------|--------|--------------|--------|---------------|--------|--------------|--------|
|           |      | PM10          | PM2.5  | PM10         | PM2.5  | PM10          | PM2.5  | PM10         | PM2.5  |
| 3/11/2013 | 0    | 0.018         | 0.004  | 0.010        | 0.002  | 0.009         | 0.006  | 0.001        | 0.001  |
| 3/11/2013 | 1    | 0.003         | 0.004  | 0.009        | 0.001  | 0.006         | 0.003  | 0.005        | 0.002  |
| 3/11/2013 | 2    | 0.003         | 0.003  | 0.006        | 0.002  | 0.006         | 0.000  | 0.003        | 0.000  |
| 3/11/2013 | 3    | 0.004         | 0.003  | 0.004        | 0.003  | 0.008         | 0.002  | 0.000        | -0.001 |
| 3/11/2013 | 4    | 0.007         | 0.002  | 0.007        | 0.005  | 0.006         | 0.003  | 0.000        | 0.000  |
| 3/11/2013 | 5    | 0.008         | 0.002  | 0.009        | 0.005  | 0.004         | 0.002  | 0.000        | 0.001  |
| 3/11/2013 | 6    | 0.005         | 0.002  | 0.006        | 0.002  | 0.008         | 0.003  | 0.001        | 0.001  |
| 3/11/2013 | 7    | 0.004         | 0.003  | 0.004        | 0.003  | 0.019         | 0.004  | 0.002        | 0.004  |
| 3/11/2013 | 8    | 0.003         | 0.003  | 0.005        | 0.001  | 0.018         | -0.001 | 0.003        | 0.004  |
| 3/11/2013 | 9    | 0.003         | 0.003  | 0.003        | 0.001  | 0.010         | -0.002 | 0.002        | 0.001  |
| 3/11/2013 | 10   | 0.003         | 0.002  | 0.002        | 0.002  | 0.006         | -0.001 | -0.001       | 0.000  |
| 3/11/2013 | 11   | 0.004         | -0.001 | 0.003        | 0.001  | 0.001         | -0.001 | 0.003        | 0.001  |
| 3/11/2013 | 12   | 0.004         | -0.003 | 0.004        | -0.003 | 0.021         | 0.003  | 0.003        | 0.003  |
| 3/11/2013 | 13   | 0.002         | -0.002 | 0.003        | -0.001 | 0.038         | 0.004  | 0.000        | 0.001  |
| 3/11/2013 | 14   | 0.002         | 0.000  | 0.002        | 0.001  | 0.007         | 0.002  | 0.001        | 0.001  |
| 3/11/2013 | 15   | 0.002         | 0.001  | 0.006        | -0.002 | 0.015         | 0.002  | 0.000        | 0.003  |
| 3/11/2013 | 16   | 0.001         | 0.001  | 0.008        | -0.001 | 0.001         | 0.001  | 0.001        | 0.002  |
| 3/11/2013 | 17   | 0.006         | 0.001  | 0.006        | 0.000  | 0.000         | 0.003  | 0.000        | 0.002  |
| 3/11/2013 | 18   | 0.008         | 0.002  | 0.007        | 0.002  | 0.002         | 0.005  | 0.000        | 0.003  |
| 3/11/2013 | 19   | 0.008         | 0.002  | 0.006        | 0.002  | 0.005         | 0.003  | 0.001        | 0.003  |
| 3/11/2013 | 20   | 0.004         | 0.002  | 0.007        | 0.002  | 0.006         | 0.002  | 0.000        | 0.002  |
| 3/11/2013 | 21   | 0.003         | 0.004  | 0.010        | 0.003  | 0.006         | 0.003  | 0.000        | 0.003  |
| 3/11/2013 | 22   | 0.006         | 0.003  | 0.010        | 0.003  | 0.005         | 0.001  | 0.001        | 0.001  |
| 3/11/2013 | 23   | 0.005         | 0.001  | 0.008        | 0.003  | 0.005         | 0.000  | 0.001        | 0.000  |
| 3/12/2013 | 0    | 0.005         | 0.002  | 0.005        | 0.001  | 0.004         | 0.003  | 0.001        | 0.002  |
| 3/12/2013 | 1    | 0.005         | 0.003  | 0.007        | 0.001  | 0.004         | 0.003  | 0.003        | 0.002  |
| 3/12/2013 | 2    | 0.005         | 0.004  | 0.006        | 0.004  | 0.006         | 0.003  | 0.001        | 0.001  |
| 3/12/2013 | 3    | 0.004         | 0.002  | 0.005        | 0.005  | 0.007         | 0.003  | 0.002        | 0.001  |
| 3/12/2013 | 4    | 0.004         | 0.003  | 0.008        | 0.003  | 0.008         | 0.002  | 0.003        | 0.002  |
| 3/12/2013 | 5    | 0.007         | 0.005  | 0.008        | 0.004  | 0.008         | 0.004  | 0.002        | 0.002  |
| 3/12/2013 | 6    | 0.008         | 0.003  | 0.009        | 0.006  | 0.044         | 0.005  | 0.004        | 0.004  |
| 3/12/2013 | 7    | 0.006         | 0.001  | 0.011        | 0.004  | 0.066         | 0.007  | 0.008        | 0.004  |
| 3/12/2013 | 8    | 0.005         | 0.003  | 0.010        | 0.002  | 0.019         | 0.006  | 0.008        | 0.002  |
| 3/12/2013 | 9    | 0.005         | 0.004  | 0.008        | 0.001  | 0.017         | 0.004  | -0.015       | 0.227  |
| 3/12/2013 | 10   | 0.006         | 0.001  | 0.005        | 0.000  | 0.009         | 0.001  | 0.003        | 0.002  |
| 3/12/2013 | 11   | 0.003         | 0.001  | 0.003        | -0.001 | 0.017         | 0.002  | 0.003        | 0.002  |
| 3/12/2013 | 12   | 0.003         | 0.001  | 0.003        | -0.001 | 0.009         | 0.001  | 0.002        | 0.000  |
| 3/12/2013 | 13   | 0.005         | 0.001  | 0.002        | 0.001  | 0.010         | 0.001  | 0.003        | 0.002  |
| 3/12/2013 | 14   | 0.003         | 0.002  | 0.015        | 0.004  | 0.005         | 0.003  | 0.005        | 0.003  |
| 3/12/2013 | 15   | 0.002         | 0.000  | 0.002        | 0.005  | 0.006         | 0.004  | 0.004        | 0.003  |
| 3/12/2013 | 16   | 0.004         | 0.000  | 0.003        | 0.001  | 0.011         | 0.004  | 0.003        | 0.001  |
| 3/12/2013 | 17   | 0.005         | 0.002  | 0.004        | 0.002  | 0.005         | 0.002  | 0.002        | 0.001  |
| 3/12/2013 | 18   | 0.005         | 0.002  | 0.003        | 0.002  | 0.006         | 0.000  | 0.002        | 0.003  |
| 3/12/2013 | 19   | 0.005         | 0.000  | 0.006        | 0.002  | 0.008         | 0.002  | 0.001        | 0.004  |
| 3/12/2013 | 20   | 0.007         | 0.000  | 0.008        | 0.004  | 0.008         | 0.004  | 0.000        | 0.002  |
| 3/12/2013 | 21   | 0.006         | 0.001  | 0.005        | 0.003  | 0.007         | 0.002  | -0.001       | 0.002  |
| 3/12/2013 | 22   | 0.003         | 0.001  | 0.008        | 0.004  | 0.006         | 0.002  | -0.001       | 0.002  |
| 3/12/2013 | 23   | 0.004         | 0.000  | 0.009        | 0.005  | 0.005         | 0.003  | 0.001        | 0.003  |



## DESERT SUNLIGHT SOLAR FARM

### TABLE 3 - HOURLY BAM DATA

(Please refer to Table 3 cover page for additional details.)

All values are in units of milligrams per cubic meter.

| Date      | Hour | North Station |        | East Station |        | South Station |        | West Station |        |
|-----------|------|---------------|--------|--------------|--------|---------------|--------|--------------|--------|
|           |      | PM10          | PM2.5  | PM10         | PM2.5  | PM10          | PM2.5  | PM10         | PM2.5  |
| 3/13/2013 | 0    | 0.006         | 0.001  | 0.006        | 0.004  | 0.001         | 0.003  | 0.000        | 0.004  |
| 3/13/2013 | 1    | 0.008         | 0.001  | 0.006        | 0.004  | 0.000         | 0.003  | 0.000        | 0.004  |
| 3/13/2013 | 2    | 0.006         | 0.000  | 0.007        | 0.005  | 0.002         | 0.002  | -0.001       | 0.002  |
| 3/13/2013 | 3    | 0.004         | 0.001  | 0.007        | 0.003  | 0.004         | 0.004  | -0.002       | 0.002  |
| 3/13/2013 | 4    | 0.006         | 0.000  | 0.008        | 0.002  | 0.008         | 0.003  | 0.002        | 0.003  |
| 3/13/2013 | 5    | 0.007         | 0.002  | 0.009        | 0.004  | 0.008         | 0.003  | 0.003        | 0.001  |
| 3/13/2013 | 6    | 0.009         | 0.005  | 0.009        | 0.005  | 0.026         | 0.004  | 0.004        | 0.003  |
| 3/13/2013 | 7    | 0.010         | 0.005  | 0.010        | 0.004  | 0.023         | 0.002  | 0.005        | 0.004  |
| 3/13/2013 | 8    | 0.007         | 0.004  | 0.009        | 0.004  | 0.012         | 0.002  | 0.006        | 0.003  |
| 3/13/2013 | 9    | 0.007         | 0.003  | 0.007        | 0.002  | 0.012         | 0.002  | 0.005        | 0.002  |
| 3/13/2013 | 10   | 0.062         | 0.001  | 0.006        | 0.000  | 0.009         | 0.002  | 0.001        | 0.002  |
| 3/13/2013 | 11   | 0.005         | 0.001  | 0.003        | 0.000  | 0.006         | 0.003  | 0.002        | 0.000  |
| 3/13/2013 | 12   | 0.003         | 0.001  | 0.003        | 0.000  | 0.003         | 0.001  | 0.001        | -0.001 |
| 3/13/2013 | 13   | -0.001        | 0.000  | 0.004        | 0.000  | 0.000         | -0.001 | 0.003        | 0.002  |
| 3/13/2013 | 14   | 0.001         | 0.000  | 0.003        | 0.001  | 0.003         | 0.001  | 0.004        | 0.000  |
| 3/13/2013 | 15   | 0.005         | 0.002  | 0.002        | 0.003  | 0.004         | 0.001  | 0.003        | -0.002 |
| 3/13/2013 | 16   | 0.006         | 0.002  | 0.004        | 0.003  | 0.017         | 0.003  | 0.002        | 0.001  |
| 3/13/2013 | 17   | 0.005         | 0.002  | 0.006        | 0.003  | 0.003         | 0.002  | -0.003       | 0.003  |
| 3/13/2013 | 18   | 0.005         | 0.001  | 0.007        | 0.003  | 0.007         | 0.003  | -0.003       | 0.000  |
| 3/13/2013 | 19   | 0.035         | 0.001  | 0.009        | 0.003  | 0.009         | 0.004  | 0.003        | 0.001  |
| 3/13/2013 | 20   | 0.002         | 0.001  | 0.009        | 0.006  | 0.008         | 0.005  | 0.004        | 0.001  |
| 3/13/2013 | 21   | 0.005         | 0.002  | 0.008        | 0.007  | 0.007         | 0.003  | -0.001       | 0.000  |
| 3/13/2013 | 22   | 0.005         | 0.003  | 0.006        | 0.004  | 0.006         | 0.002  | -0.002       | 0.001  |
| 3/13/2013 | 23   | 0.002         | 0.001  | 0.006        | 0.001  | 0.003         | 0.003  | 0.001        | 0.000  |
| 3/14/2013 | 0    | 0.004         | 0.002  | 0.005        | 0.002  | 0.002         | 0.002  | 0.004        | -0.001 |
| 3/14/2013 | 1    | 0.005         | 0.003  | 0.005        | 0.002  | 0.004         | 0.003  | 0.005        | 0.001  |
| 3/14/2013 | 2    | 0.003         | 0.001  | 0.009        | 0.003  | 0.006         | 0.004  | 0.004        | 0.002  |
| 3/14/2013 | 3    | 0.002         | 0.004  | 0.011        | 0.003  | 0.005         | 0.004  | 0.001        | 0.001  |
| 3/14/2013 | 4    | 0.007         | 0.006  | 0.009        | 0.001  | 0.007         | 0.003  | 0.002        | -0.001 |
| 3/14/2013 | 5    | 0.009         | 0.002  | 0.007        | 0.003  | 0.011         | 0.002  | 0.002        | -0.003 |
| 3/14/2013 | 6    | 0.005         | 0.002  | 0.008        | 0.006  | 0.011         | 0.003  | 0.000        | 0.001  |
| 3/14/2013 | 7    | 0.005         | 0.004  | 0.010        | 0.006  | 0.012         | 0.002  | 0.001        | 0.002  |
| 3/14/2013 | 8    | 0.007         | 0.002  | 0.007        | 0.004  | 0.013         | 0.002  | 0.002        | 0.002  |
| 3/14/2013 | 9    | 0.010         | -0.003 | 0.005        | 0.003  | 0.013         | 0.001  | 0.005        | 0.000  |
| 3/14/2013 | 10   | ---           | ---    | 0.005        | 0.002  | 0.012         | -0.001 | 0.006        | -0.002 |
| 3/14/2013 | 11   | 0.985         | 0.985  | 0.005        | 0.002  | 0.007         | 0.000  | ---          | ---    |
| 3/14/2013 | 12   | 0.011         | -0.003 | 0.004        | 0.001  | 0.003         | 0.001  | 0.985        | 0.985  |
| 3/14/2013 | 13   | 0.006         | -0.001 | 0.006        | 0.002  | 0.006         | -0.001 | 0.004        | 0.001  |
| 3/14/2013 | 14   | 0.003         | -0.001 | 0.007        | 0.002  | 0.010         | -0.001 | 0.002        | 0.002  |
| 3/14/2013 | 15   | 0.004         | 0.002  | 0.005        | 0.001  | 0.012         | 0.002  | -0.001       | 0.002  |
| 3/14/2013 | 16   | 0.006         | 0.003  | 0.003        | 0.000  | 0.016         | 0.004  | 0.000        | 0.001  |
| 3/14/2013 | 17   | 0.006         | 0.001  | 0.002        | -0.001 | 0.003         | 0.005  | -0.001       | 0.001  |
| 3/14/2013 | 18   | 0.005         | -0.002 | 0.006        | 0.001  | 0.006         | 0.005  | 0.000        | 0.002  |
| 3/14/2013 | 19   | 0.007         | 0.001  | 0.007        | 0.002  | 0.008         | 0.001  | 0.002        | 0.002  |
| 3/14/2013 | 20   | 0.007         | 0.004  | 0.007        | 0.004  | 0.007         | 0.001  | 0.000        | 0.001  |
| 3/14/2013 | 21   | 0.002         | 0.004  | 0.006        | 0.003  | 0.007         | 0.002  | 0.002        | -0.002 |
| 3/14/2013 | 22   | 0.002         | 0.005  | 0.006        | 0.001  | 0.003         | 0.002  | 0.002        | 0.000  |
| 3/14/2013 | 23   | 0.005         | 0.005  | 0.005        | 0.002  | 0.001         | 0.002  | 0.001        | 0.000  |



## DESERT SUNLIGHT SOLAR FARM

### TABLE 3 - HOURLY BAM DATA

(Please refer to Table 3 cover page for additional details.)

All values are in units of milligrams per cubic meter.

| Date      | Hour | North Station |       | East Station |        | South Station |       | West Station |        |
|-----------|------|---------------|-------|--------------|--------|---------------|-------|--------------|--------|
|           |      | PM10          | PM2.5 | PM10         | PM2.5  | PM10          | PM2.5 | PM10         | PM2.5  |
| 3/15/2013 | 0    | 0.006         | 0.004 | 0.009        | 0.003  | 0.004         | 0.001 | 0.001        | -0.002 |
| 3/15/2013 | 1    | 0.004         | 0.001 | 0.008        | 0.003  | 0.005         | 0.001 | 0.000        | -0.001 |
| 3/15/2013 | 2    | 0.003         | 0.002 | 0.004        | 0.002  | 0.005         | 0.002 | 0.001        | 0.000  |
| 3/15/2013 | 3    | 0.003         | 0.002 | 0.007        | 0.002  | 0.003         | 0.003 | 0.001        | 0.002  |
| 3/15/2013 | 4    | 0.005         | 0.001 | 0.009        | 0.004  | 0.005         | 0.006 | 0.002        | 0.005  |
| 3/15/2013 | 5    | 0.006         | 0.002 | 0.009        | 0.006  | 0.035         | 0.006 | 0.003        | 0.003  |
| 3/15/2013 | 6    | 0.006         | 0.003 | 0.010        | 0.006  | 0.008         | 0.005 | 0.002        | 0.001  |
| 3/15/2013 | 7    | 0.004         | 0.004 | 0.009        | 0.005  | 0.008         | 0.004 | 0.002        | 0.001  |
| 3/15/2013 | 8    | 0.006         | 0.002 | 0.009        | 0.985  | 0.007         | 0.002 | 0.002        | 0.001  |
| 3/15/2013 | 9    | 0.007         | 0.002 | ---          | ---    | 0.008         | 0.003 | 0.003        | -0.001 |
| 3/15/2013 | 10   | 0.000         | 0.005 | 0.985        | 0.000  | 0.009         | 0.003 | 0.004        | -0.002 |
| 3/15/2013 | 11   | 0.985         | 0.985 | 0.011        | 0.001  | 0.008         | 0.003 | 0.003        | 0.000  |
| 3/15/2013 | 12   | 0.000         | 0.003 | 0.011        | 0.003  | ---           | ---   | 0.003        | 0.002  |
| 3/15/2013 | 13   | 0.006         | 0.001 | 0.011        | 0.004  | 0.985         | 0.985 | 0.002        | 0.004  |
| 3/15/2013 | 14   | 0.008         | 0.004 | 0.011        | 0.004  | 0.011         | 0.003 | 0.985        | 0.985  |
| 3/15/2013 | 15   | 0.009         | 0.003 | 0.008        | 0.002  | 0.010         | 0.003 | 0.023        | 0.003  |
| 3/15/2013 | 16   | 0.007         | 0.001 | 0.005        | 0.001  | 0.008         | 0.005 | 0.007        | 0.001  |
| 3/15/2013 | 17   | 0.006         | 0.002 | 0.006        | -0.001 | 0.009         | 0.004 | 0.010        | 0.001  |
| 3/15/2013 | 18   | 0.005         | 0.001 | 0.006        | -0.001 | 0.007         | 0.001 | 0.009        | 0.002  |
| 3/15/2013 | 19   | 0.005         | 0.002 | 0.018        | 0.002  | 0.008         | 0.001 | 0.006        | 0.003  |
| 3/15/2013 | 20   | 0.009         | 0.003 | 0.012        | 0.003  | 0.013         | 0.005 | 0.010        | 0.005  |
| 3/15/2013 | 21   | 0.016         | 0.001 | 0.015        | 0.004  | 0.013         | 0.006 | 0.013        | 0.003  |
| 3/15/2013 | 22   | 0.013         | 0.001 | 0.013        | 0.005  | 0.013         | 0.005 | 0.012        | 0.002  |
| 3/15/2013 | 23   | 0.013         | 0.003 | 0.019        | 0.006  | 0.017         | 0.005 | 0.011        | 0.005  |
| 3/16/2013 | 0    | 0.012         | 0.004 | 0.019        | 0.006  | 0.011         | 0.004 | 0.015        | 0.004  |
| 3/16/2013 | 1    | 0.012         | 0.003 | 0.017        | 0.007  | 0.012         | 0.004 | 0.011        | 0.003  |
| 3/16/2013 | 2    | 0.016         | 0.005 | 0.019        | 0.005  | 0.014         | 0.006 | 0.015        | 0.003  |
| 3/16/2013 | 3    | 0.018         | 0.006 | 0.022        | 0.005  | 0.020         | 0.008 | 0.026        | 0.005  |
| 3/16/2013 | 4    | 0.017         | 0.005 | 0.026        | 0.008  | 0.018         | 0.008 | 0.020        | 0.005  |
| 3/16/2013 | 5    | 0.020         | 0.008 | 0.026        | 0.009  | 0.018         | 0.007 | 0.016        | 0.003  |
| 3/16/2013 | 6    | 0.013         | 0.007 | 0.017        | 0.007  | 0.017         | 0.006 | 0.017        | 0.006  |
| 3/16/2013 | 7    | 0.012         | 0.006 | 0.017        | 0.006  | 0.019         | 0.005 | 0.015        | 0.005  |
| 3/16/2013 | 8    | 0.013         | 0.006 | 0.019        | 0.006  | 0.014         | 0.005 | 0.013        | 0.005  |
| 3/16/2013 | 9    | 0.018         | 0.003 | 0.018        | 0.004  | 0.019         | 0.005 | 0.013        | 0.006  |
| 3/16/2013 | 10   | 0.019         | 0.003 | 0.020        | 0.003  | 0.014         | 0.006 | 0.023        | 0.006  |
| 3/16/2013 | 11   | 0.022         | 0.004 | 0.027        | 0.003  | 0.018         | 0.007 | 0.027        | 0.005  |
| 3/16/2013 | 12   | 0.015         | 0.005 | 0.024        | 0.005  | 0.020         | 0.007 | 0.021        | 0.004  |
| 3/16/2013 | 13   | 0.015         | 0.005 | 0.026        | 0.006  | 0.019         | 0.007 | 0.017        | 0.004  |
| 3/16/2013 | 14   | 0.012         | 0.004 | 0.017        | 0.003  | 0.021         | 0.006 | 0.014        | 0.005  |
| 3/16/2013 | 15   | 0.012         | 0.005 | 0.012        | 0.004  | 0.013         | 0.004 | 0.012        | 0.006  |
| 3/16/2013 | 16   | 0.012         | 0.003 | 0.012        | 0.004  | 0.014         | 0.003 | 0.009        | 0.005  |
| 3/16/2013 | 17   | 0.010         | 0.002 | 0.012        | 0.000  | 0.012         | 0.005 | 0.009        | 0.004  |
| 3/16/2013 | 18   | 0.010         | 0.002 | 0.010        | 0.004  | 0.010         | 0.005 | 0.009        | 0.004  |
| 3/16/2013 | 19   | 0.010         | 0.002 | 0.010        | 0.006  | 0.010         | 0.005 | 0.008        | 0.005  |
| 3/16/2013 | 20   | 0.010         | 0.003 | 0.013        | 0.005  | 0.009         | 0.008 | 0.010        | 0.004  |
| 3/16/2013 | 21   | 0.011         | 0.004 | 0.017        | 0.007  | 0.012         | 0.005 | 0.016        | 0.005  |
| 3/16/2013 | 22   | 0.096         | 0.016 | 0.057        | 0.011  | 0.090         | 0.016 | 0.093        | 0.009  |
| 3/16/2013 | 23   | 0.051         | 0.007 | 0.058        | 0.011  | 0.047         | 0.007 | 0.054        | 0.012  |



## DESERT SUNLIGHT SOLAR FARM

### TABLE 3 - HOURLY BAM DATA

(Please refer to Table 3 cover page for additional details.)

All values are in units of milligrams per cubic meter.

| Date      | Hour | North Station |       | East Station |       | South Station |       | West Station |       |
|-----------|------|---------------|-------|--------------|-------|---------------|-------|--------------|-------|
|           |      | PM10          | PM2.5 | PM10         | PM2.5 | PM10          | PM2.5 | PM10         | PM2.5 |
| 3/17/2013 | 0    | 0.068         | 0.007 | 0.074        | 0.010 | 0.063         | 0.010 | 0.067        | 0.011 |
| 3/17/2013 | 1    | 0.050         | 0.008 | 0.065        | 0.012 | 0.054         | 0.010 | 0.047        | 0.010 |
| 3/17/2013 | 2    | 0.125         | 0.017 | 0.181        | 0.018 | 0.114         | 0.011 | 0.080        | 0.010 |
| 3/17/2013 | 3    | 0.131         | 0.013 | 0.150        | 0.018 | 0.115         | 0.015 | 0.118        | 0.012 |
| 3/17/2013 | 4    | 0.068         | 0.011 | 0.091        | 0.013 | 0.079         | 0.012 | 0.077        | 0.009 |
| 3/17/2013 | 5    | 0.273         | 0.026 | 0.303        | 0.028 | 0.187         | 0.020 | 0.253        | 0.020 |
| 3/17/2013 | 6    | 0.162         | 0.027 | 0.175        | 0.027 | 0.196         | 0.025 | 0.183        | 0.031 |
| 3/17/2013 | 7    | 0.090         | 0.016 | 0.096        | 0.016 | 0.112         | 0.017 | 0.104        | 0.016 |
| 3/17/2013 | 8    | 0.056         | 0.014 | 0.063        | 0.013 | 0.098         | 0.014 | 0.072        | 0.013 |
| 3/17/2013 | 9    | 0.046         | 0.012 | 0.040        | 0.009 | 0.068         | 0.013 | 0.034        | 0.009 |
| 3/17/2013 | 10   | 0.031         | 0.009 | 0.031        | 0.006 | 0.043         | 0.010 | 0.028        | 0.006 |
| 3/17/2013 | 11   | 0.023         | 0.006 | 0.022        | 0.004 | 0.021         | 0.008 | 0.021        | 0.006 |
| 3/17/2013 | 12   | 0.020         | 0.004 | 0.021        | 0.003 | 0.018         | 0.007 | 0.014        | 0.006 |
| 3/17/2013 | 13   | 0.018         | 0.004 | 0.019        | 0.008 | 0.014         | 0.006 | 0.019        | 0.006 |
| 3/17/2013 | 14   | 0.011         | 0.005 | 0.014        | 0.007 | 0.011         | 0.007 | 0.012        | 0.005 |
| 3/17/2013 | 15   | 0.010         | 0.002 | 0.010        | 0.004 | 0.009         | 0.006 | 0.010        | 0.004 |
| 3/17/2013 | 16   | 0.009         | 0.001 | 0.007        | 0.003 | 0.008         | 0.005 | 0.008        | 0.003 |
| 3/17/2013 | 17   | 0.007         | 0.001 | 0.008        | 0.002 | 0.004         | 0.006 | 0.008        | 0.003 |
| 3/17/2013 | 18   | 0.005         | 0.002 | 0.008        | 0.002 | 0.005         | 0.006 | 0.007        | 0.002 |
| 3/17/2013 | 19   | 0.004         | 0.001 | 0.008        | 0.004 | 0.009         | 0.005 | 0.010        | 0.003 |
| 3/17/2013 | 20   | 0.005         | 0.003 | 0.009        | 0.005 | 0.009         | 0.006 | 0.011        | 0.004 |
| 3/17/2013 | 21   | 0.008         | 0.002 | 0.015        | 0.005 | 0.011         | 0.008 | 0.010        | 0.004 |
| 3/17/2013 | 22   | 0.008         | 0.000 | 0.009        | 0.003 | 0.013         | 0.005 | 0.010        | 0.005 |
| 3/17/2013 | 23   | 0.007         | 0.002 | 0.019        | 0.005 | 0.018         | 0.005 | 0.008        | 0.003 |
| 3/18/2013 | 0    | 0.012         | 0.004 | 0.012        | 0.006 | 0.010         | 0.007 | 0.015        | 0.002 |
| 3/18/2013 | 1    | 0.014         | 0.003 | 0.022        | 0.007 | 0.012         | 0.005 | 0.025        | 0.003 |
| 3/18/2013 | 2    | 0.044         | 0.007 | 0.057        | 0.008 | 0.039         | 0.006 | 0.031        | 0.006 |
| 3/18/2013 | 3    | 0.028         | 0.008 | 0.027        | 0.009 | 0.027         | 0.009 | 0.027        | 0.008 |
| 3/18/2013 | 4    | 0.029         | 0.005 | 0.027        | 0.009 | 0.023         | 0.007 | 0.024        | 0.006 |
| 3/18/2013 | 5    | 0.019         | 0.007 | 0.022        | 0.006 | 0.021         | 0.007 | 0.020        | 0.008 |
| 3/18/2013 | 6    | 0.018         | 0.005 | 0.019        | 0.005 | 0.013         | 0.008 | 0.016        | 0.009 |
| 3/18/2013 | 7    | 0.013         | 0.004 | 0.019        | 0.006 | 0.018         | 0.007 | 0.012        | 0.007 |
| 3/18/2013 | 8    | 0.016         | 0.005 | 0.013        | 0.006 | 0.021         | 0.006 | 0.012        | 0.007 |
| 3/18/2013 | 9    | 0.016         | 0.001 | 0.012        | 0.007 | 0.014         | 0.003 | 0.013        | 0.006 |
| 3/18/2013 | 10   | 0.014         | 0.000 | 0.017        | 0.006 | 0.016         | 0.003 | 0.013        | 0.003 |
| 3/18/2013 | 11   | 0.014         | 0.002 | 0.008        | 0.004 | 0.013         | 0.004 | 0.013        | 0.002 |
| 3/18/2013 | 12   | 0.017         | 0.002 | 0.017        | 0.004 | 0.017         | 0.003 | 0.014        | 0.003 |
| 3/18/2013 | 13   | 0.014         | 0.001 | 0.009        | 0.004 | 0.013         | 0.005 | 0.035        | 0.003 |
| 3/18/2013 | 14   | 0.011         | 0.003 | 0.010        | 0.003 | 0.013         | 0.003 | 0.011        | 0.002 |
| 3/18/2013 | 15   | 0.004         | 0.003 | 0.009        | 0.003 | 0.013         | 0.002 | 0.010        | 0.002 |
| 3/18/2013 | 16   | 0.002         | 0.001 | 0.008        | 0.004 | 0.011         | 0.004 | 0.007        | 0.002 |
| 3/18/2013 | 17   | 0.007         | 0.001 | 0.007        | 0.004 | 0.030         | 0.004 | 0.007        | 0.003 |
| 3/18/2013 | 18   | 0.008         | 0.001 | 0.008        | 0.004 | 0.009         | 0.003 | 0.008        | 0.005 |
| 3/18/2013 | 19   | 0.007         | 0.001 | 0.011        | 0.004 | 0.008         | 0.002 | 0.007        | 0.004 |
| 3/18/2013 | 20   | 0.009         | 0.002 | 0.012        | 0.004 | 0.010         | 0.002 | 0.008        | 0.001 |
| 3/18/2013 | 21   | 0.017         | 0.005 | 0.020        | 0.006 | 0.017         | 0.005 | 0.012        | 0.003 |
| 3/18/2013 | 22   | 0.017         | 0.006 | 0.016        | 0.008 | 0.019         | 0.008 | 0.017        | 0.003 |
| 3/18/2013 | 23   | 0.015         | 0.007 | 0.021        | 0.007 | 0.019         | 0.008 | 0.011        | 0.005 |



## DESERT SUNLIGHT SOLAR FARM

### TABLE 3 - HOURLY BAM DATA

(Please refer to Table 3 cover page for additional details.)

All values are in units of milligrams per cubic meter.

| Date      | Hour | North Station |       | East Station |       | South Station |        | West Station |       |
|-----------|------|---------------|-------|--------------|-------|---------------|--------|--------------|-------|
|           |      | PM10          | PM2.5 | PM10         | PM2.5 | PM10          | PM2.5  | PM10         | PM2.5 |
| 3/19/2013 | 0    | 0.010         | 0.006 | 0.021        | 0.007 | 0.019         | 0.008  | 0.018        | 0.008 |
| 3/19/2013 | 1    | 0.016         | 0.005 | 0.021        | 0.008 | 0.016         | 0.008  | 0.020        | 0.005 |
| 3/19/2013 | 2    | 0.015         | 0.005 | 0.012        | 0.007 | 0.015         | 0.010  | 0.013        | 0.004 |
| 3/19/2013 | 3    | 0.022         | 0.005 | 0.016        | 0.009 | 0.018         | 0.007  | 0.018        | 0.005 |
| 3/19/2013 | 4    | 0.014         | 0.005 | 0.020        | 0.009 | 0.017         | 0.004  | 0.016        | 0.006 |
| 3/19/2013 | 5    | 0.035         | 0.006 | 0.040        | 0.007 | 0.026         | 0.006  | 0.028        | 0.008 |
| 3/19/2013 | 6    | 0.023         | 0.008 | 0.025        | 0.007 | 0.033         | 0.007  | 0.027        | 0.010 |
| 3/19/2013 | 7    | 0.023         | 0.008 | 0.030        | 0.006 | 0.020         | 0.006  | 0.021        | 0.010 |
| 3/19/2013 | 8    | 0.018         | 0.007 | 0.033        | 0.006 | 0.032         | 0.006  | 0.015        | 0.006 |
| 3/19/2013 | 9    | 0.053         | 0.007 | 0.051        | 0.008 | 0.043         | 0.006  | 0.040        | 0.005 |
| 3/19/2013 | 10   | 0.153         | 0.006 | 0.077        | 0.006 | 0.050         | 0.005  | 0.031        | 0.006 |
| 3/19/2013 | 11   | 0.020         | 0.003 | 0.080        | 0.004 | 0.256         | 0.015  | 0.020        | 0.003 |
| 3/19/2013 | 12   | 0.009         | 0.002 | 0.013        | 0.003 | 0.023         | -0.001 | 0.013        | 0.002 |
| 3/19/2013 | 13   | 0.008         | 0.004 | 0.012        | 0.002 | 0.014         | 0.000  | 0.012        | 0.003 |
| 3/19/2013 | 14   | 0.007         | 0.004 | 0.009        | 0.002 | 0.020         | 0.002  | 0.009        | 0.004 |
| 3/19/2013 | 15   | 0.006         | 0.000 | 0.007        | 0.004 | 0.010         | 0.003  | 0.005        | 0.000 |
| 3/19/2013 | 16   | 0.006         | 0.000 | 0.007        | 0.005 | 0.011         | 0.005  | 0.020        | 0.000 |
| 3/19/2013 | 17   | 0.006         | 0.003 | 0.007        | 0.002 | 0.017         | 0.005  | 0.012        | 0.005 |
| 3/19/2013 | 18   | 0.006         | 0.003 | 0.007        | 0.002 | 0.005         | 0.003  | 0.010        | 0.006 |
| 3/19/2013 | 19   | 0.009         | 0.003 | 0.008        | 0.005 | 0.008         | 0.001  | 0.008        | 0.004 |
| 3/19/2013 | 20   | 0.010         | 0.006 | 0.010        | 0.006 | 0.012         | 0.002  | 0.009        | 0.003 |
| 3/19/2013 | 21   | 0.164         | 0.017 | 0.010        | 0.006 | 0.013         | 0.005  | 0.010        | 0.005 |
| 3/19/2013 | 22   | 0.007         | 0.002 | 0.011        | 0.005 | 0.017         | 0.004  | 0.013        | 0.004 |
| 3/19/2013 | 23   | 0.017         | 0.003 | 0.013        | 0.005 | 0.005         | 0.001  | 0.012        | 0.002 |
| 3/20/2013 | 0    | 0.008         | 0.004 | 0.011        | 0.006 | 0.006         | 0.001  | 0.012        | 0.004 |
| 3/20/2013 | 1    | 0.010         | 0.004 | 0.016        | 0.005 | 0.008         | 0.001  | 0.012        | 0.004 |
| 3/20/2013 | 2    | 0.012         | 0.003 | 0.018        | 0.005 | 0.016         | 0.005  | 0.013        | 0.003 |
| 3/20/2013 | 3    | 0.013         | 0.004 | 0.015        | 0.006 | 0.016         | 0.005  | 0.014        | 0.004 |
| 3/20/2013 | 4    | 0.013         | 0.008 | 0.018        | 0.007 | 0.020         | 0.005  | 0.016        | 0.006 |
| 3/20/2013 | 5    | 0.013         | 0.007 | 0.013        | 0.007 | 0.014         | 0.006  | 0.009        | 0.005 |
| 3/20/2013 | 6    | 0.014         | 0.005 | 0.024        | 0.010 | 0.012         | 0.005  | 0.010        | 0.006 |
| 3/20/2013 | 7    | 0.013         | 0.006 | 0.011        | 0.009 | 0.020         | 0.006  | 0.015        | 0.006 |
| 3/20/2013 | 8    | 0.011         | 0.007 | 0.011        | 0.007 | 0.021         | 0.006  | 0.009        | 0.005 |
| 3/20/2013 | 9    | 0.010         | 0.005 | 0.012        | 0.007 | 0.023         | 0.005  | 0.011        | 0.005 |
| 3/20/2013 | 10   | 0.010         | 0.005 | 0.013        | 0.003 | 0.012         | 0.005  | 0.017        | 0.003 |
| 3/20/2013 | 11   | 0.011         | 0.004 | 0.013        | 0.003 | 0.013         | 0.004  | 0.012        | 0.000 |
| 3/20/2013 | 12   | 0.012         | 0.003 | 0.011        | 0.003 | 0.012         | 0.004  | 0.013        | 0.002 |
| 3/20/2013 | 13   | 0.012         | 0.003 | 0.011        | 0.002 | 0.011         | 0.005  | 0.014        | 0.005 |
| 3/20/2013 | 14   | 0.011         | 0.004 | 0.017        | 0.005 | 0.013         | 0.005  | 0.014        | 0.006 |
| 3/20/2013 | 15   | 0.009         | 0.005 | 0.014        | 0.005 | 0.014         | 0.003  | 0.011        | 0.005 |
| 3/20/2013 | 16   | 0.008         | 0.004 | 0.012        | 0.006 | 0.013         | 0.002  | 0.010        | 0.005 |
| 3/20/2013 | 17   | 0.010         | 0.003 | 0.009        | 0.006 | 0.016         | 0.005  | 0.011        | 0.006 |
| 3/20/2013 | 18   | 0.009         | 0.004 | 0.007        | 0.003 | 0.009         | 0.005  | 0.009        | 0.005 |
| 3/20/2013 | 19   | 0.020         | 0.005 | 0.007        | 0.001 | 0.007         | 0.005  | 0.007        | 0.003 |
| 3/20/2013 | 20   | 0.044         | 0.005 | 0.038        | 0.004 | 0.032         | 0.006  | 0.042        | 0.004 |
| 3/20/2013 | 21   | 0.058         | 0.006 | 0.058        | 0.010 | 0.052         | 0.005  | 0.066        | 0.008 |
| 3/20/2013 | 22   | 0.059         | 0.009 | 0.066        | 0.013 | 0.059         | 0.009  | 0.065        | 0.012 |
| 3/20/2013 | 23   | 0.030         | 0.010 | 0.044        | 0.011 | 0.040         | 0.012  | 0.037        | 0.011 |





## DESERT SUNLIGHT SOLAR FARM

### TABLE 3 - HOURLY BAM DATA

(Please refer to Table 3 cover page for additional details.)

All values are in units of milligrams per cubic meter.

| Date      | Hour | North Station |       | East Station |       | South Station |       | West Station |       |
|-----------|------|---------------|-------|--------------|-------|---------------|-------|--------------|-------|
|           |      | PM10          | PM2.5 | PM10         | PM2.5 | PM10          | PM2.5 | PM10         | PM2.5 |
| 3/21/2013 | 0    | 0.031         | 0.007 | 0.032        | 0.009 | 0.040         | 0.011 | 0.041        | 0.009 |
| 3/21/2013 | 1    | 0.039         | 0.007 | 0.036        | 0.009 | 0.042         | 0.008 | 0.037        | 0.010 |
| 3/21/2013 | 2    | 0.045         | 0.008 | 0.041        | 0.008 | 0.037         | 0.005 | 0.038        | 0.009 |
| 3/21/2013 | 3    | 0.083         | 0.010 | 0.101        | 0.015 | 0.086         | 0.009 | 0.078        | 0.011 |
| 3/21/2013 | 4    | 0.062         | 0.009 | 0.056        | 0.009 | 0.050         | 0.010 | 0.051        | 0.009 |
| 3/21/2013 | 5    | 0.028         | 0.005 | 0.033        | 0.009 | 0.042         | 0.007 | 0.029        | 0.005 |
| 3/21/2013 | 6    | 0.076         | 0.005 | 0.050        | 0.008 | 0.056         | 0.007 | 0.101        | 0.006 |
| 3/21/2013 | 7    | 0.076         | 0.009 | 0.044        | 0.008 | 0.085         | 0.008 | 0.086        | 0.007 |
| 3/21/2013 | 8    | 0.037         | 0.011 | 0.055        | 0.007 | 0.054         | 0.009 | 0.036        | 0.009 |
| 3/21/2013 | 9    | 0.017         | 0.009 | 0.024        | 0.006 | 0.022         | 0.008 | 0.018        | 0.007 |
| 3/21/2013 | 10   | 0.017         | 0.985 | 0.018        | 0.005 | 0.031         | 0.005 | 0.025        | 0.005 |
| 3/21/2013 | 11   | 0.985         | 0.007 | 0.014        | 0.003 | 0.018         | 0.005 | 0.036        | 0.005 |
| 3/21/2013 | 12   | 0.015         | 0.003 | 0.014        | 0.002 | 0.019         | 0.005 | 0.020        | 0.006 |
| 3/21/2013 | 13   | 0.011         | 0.003 | 0.012        | 0.002 | 0.013         | 0.004 | 0.012        | 0.003 |
| 3/21/2013 | 14   | 0.009         | 0.003 | 0.011        | 0.002 | 0.015         | 0.985 | 0.012        | 0.000 |
| 3/21/2013 | 15   | 0.009         | 0.001 | 0.009        | 0.003 | 0.007         | 0.002 | 0.011        | 0.001 |
| 3/21/2013 | 16   | 0.009         | 0.002 | 0.007        | 0.003 | 0.008         | 0.002 | 0.011        | 0.003 |
| 3/21/2013 | 17   | 0.006         | 0.002 | 0.007        | 0.002 | 0.012         | 0.005 | 0.009        | 0.003 |
| 3/21/2013 | 18   | 0.006         | 0.001 | 0.008        | 0.002 | 0.014         | 0.004 | 0.007        | 0.004 |
| 3/21/2013 | 19   | 0.008         | 0.003 | 0.011        | 0.002 | 0.013         | 0.003 | 0.017        | 0.004 |
| 3/21/2013 | 20   | 0.010         | 0.003 | 0.012        | 0.004 | 0.017         | 0.003 | 0.014        | 0.002 |
| 3/21/2013 | 21   | 0.011         | 0.001 | 0.012        | 0.007 | 0.012         | 0.004 | 0.013        | 0.003 |
| 3/21/2013 | 22   | 0.012         | 0.002 | 0.010        | 0.008 | 0.010         | 0.006 | 0.013        | 0.004 |
| 3/21/2013 | 23   | 0.011         | 0.004 | 0.015        | 0.004 | 0.016         | 0.006 | 0.014        | 0.005 |
| 3/22/2013 | 0    | 0.106         | 0.010 | 0.108        | 0.007 | 0.110         | 0.015 | 0.099        | 0.009 |
| 3/22/2013 | 1    | 0.110         | 0.017 | 0.113        | 0.016 | 0.103         | 0.015 | 0.112        | 0.017 |
| 3/22/2013 | 2    | 0.081         | 0.015 | 0.086        | 0.014 | 0.090         | 0.015 | 0.081        | 0.010 |
| 3/22/2013 | 3    | 0.060         | 0.013 | 0.052        | 0.013 | 0.052         | 0.007 | 0.067        | 0.009 |
| 3/22/2013 | 4    | 0.082         | 0.011 | 0.076        | 0.011 | 0.069         | 0.007 | 0.078        | 0.008 |
| 3/22/2013 | 5    | 0.092         | 0.016 | 0.093        | 0.019 | 0.101         | 0.010 | 0.085        | 0.011 |
| 3/22/2013 | 6    | 0.067         | 0.017 | 0.073        | 0.013 | 0.064         | 0.013 | 0.061        | 0.009 |
| 3/22/2013 | 7    | 0.057         | 0.010 | 0.061        | 0.012 | 0.056         | 0.010 | 0.059        | 0.007 |
| 3/22/2013 | 8    | 0.056         | 0.012 | 0.055        | 0.011 | 0.058         | 0.008 | 0.056        | 0.006 |
| 3/22/2013 | 9    | 0.051         | 0.011 | 0.054        | 0.009 | 0.053         | 0.008 | 0.049        | 0.005 |
| 3/22/2013 | 10   | 0.042         | 0.006 | 0.039        | 0.004 | 0.045         | 0.009 | 0.037        | 0.005 |
| 3/22/2013 | 11   | 0.029         | 0.006 | 0.030        | 0.005 | 0.044         | 0.006 | 0.034        | 0.006 |
| 3/22/2013 | 12   | 0.030         | 0.007 | 0.029        | 0.006 | 0.027         | 0.002 | 0.022        | 0.004 |
| 3/22/2013 | 13   | 0.017         | 0.004 | 0.017        | 0.001 | 0.015         | 0.003 | 0.022        | 0.002 |
| 3/22/2013 | 14   | 0.011         | 0.002 | 0.015        | 0.001 | 0.025         | 0.006 | 0.014        | 0.001 |
| 3/22/2013 | 15   | 0.017         | 0.003 | 0.015        | 0.004 | 0.018         | 0.005 | 0.022        | 0.005 |
| 3/22/2013 | 16   | 0.026         | 0.007 | 0.027        | 0.008 | 0.030         | 0.006 | 0.024        | 0.009 |
| 3/22/2013 | 17   | 0.055         | 0.016 | 0.027        | 0.012 | 0.033         | 0.015 | 0.027        | 0.011 |
| 3/22/2013 | 18   | 0.033         | 0.018 | 0.029        | 0.017 | 0.027         | 0.016 | 0.021        | 0.014 |
| 3/22/2013 | 19   | 0.031         | 0.021 | 0.027        | 0.020 | 0.030         | 0.017 | 0.029        | 0.019 |
| 3/22/2013 | 20   | 0.032         | 0.018 | 0.034        | 0.023 | 0.031         | 0.017 | 0.030        | 0.016 |
| 3/22/2013 | 21   | 0.027         | 0.020 | 0.031        | 0.018 | 0.031         | 0.019 | 0.030        | 0.018 |
| 3/22/2013 | 22   | 0.026         | 0.016 | 0.028        | 0.019 | 0.031         | 0.016 | 0.027        | 0.018 |
| 3/22/2013 | 23   | 0.043         | 0.018 | 0.035        | 0.019 | 0.046         | 0.021 | 0.068        | 0.019 |



## DESERT SUNLIGHT SOLAR FARM

### TABLE 3 - HOURLY BAM DATA

(Please refer to Table 3 cover page for additional details.)

All values are in units of milligrams per cubic meter.

| Date      | Hour | North Station |       | East Station |       | South Station |       | West Station |       |
|-----------|------|---------------|-------|--------------|-------|---------------|-------|--------------|-------|
|           |      | PM10          | PM2.5 | PM10         | PM2.5 | PM10          | PM2.5 | PM10         | PM2.5 |
| 3/23/2013 | 0    | 0.071         | 0.021 | 0.079        | 0.019 | 0.103         | 0.019 | 0.074        | 0.016 |
| 3/23/2013 | 1    | 0.075         | 0.020 | 0.080        | 0.015 | 0.079         | 0.017 | 0.074        | 0.018 |
| 3/23/2013 | 2    | 0.074         | 0.018 | 0.082        | 0.020 | 0.074         | 0.015 | 0.071        | 0.015 |
| 3/23/2013 | 3    | 0.090         | 0.019 | 0.087        | 0.017 | 0.076         | 0.021 | 0.083        | 0.020 |
| 3/23/2013 | 4    | 0.107         | 0.019 | 0.112        | 0.022 | 0.106         | 0.019 | 0.101        | 0.017 |
| 3/23/2013 | 5    | 0.097         | 0.021 | 0.104        | 0.018 | 0.106         | 0.021 | 0.096        | 0.021 |
| 3/23/2013 | 6    | 0.101         | 0.019 | 0.101        | 0.021 | 0.094         | 0.020 | 0.096        | 0.017 |
| 3/23/2013 | 7    | 0.077         | 0.017 | 0.085        | 0.017 | 0.092         | 0.019 | 0.080        | 0.013 |
| 3/23/2013 | 8    | 0.087         | 0.021 | 0.090        | 0.022 | 0.091         | 0.023 | 0.082        | 0.017 |
| 3/23/2013 | 9    | 0.068         | 0.014 | 0.055        | 0.012 | 0.067         | 0.014 | 0.069        | 0.010 |
| 3/23/2013 | 10   | 0.054         | 0.010 | 0.050        | 0.010 | 0.051         | 0.011 | 0.056        | 0.008 |
| 3/23/2013 | 11   | 0.049         | 0.007 | 0.041        | 0.009 | 0.038         | 0.008 | 0.039        | 0.009 |
| 3/23/2013 | 12   | 0.053         | 0.009 | 0.047        | 0.008 | 0.045         | 0.006 | 0.049        | 0.011 |
| 3/23/2013 | 13   | 0.040         | 0.012 | 0.043        | 0.007 | 0.047         | 0.006 | 0.050        | 0.008 |
| 3/23/2013 | 14   | 0.027         | 0.010 | 0.030        | 0.006 | 0.033         | 0.007 | 0.032        | 0.004 |
| 3/23/2013 | 15   | 0.022         | 0.005 | 0.020        | 0.007 | 0.017         | 0.006 | 0.026        | 0.003 |
| 3/23/2013 | 16   | 0.023         | 0.004 | 0.024        | 0.008 | 0.021         | 0.006 | 0.024        | 0.003 |
| 3/23/2013 | 17   | 0.021         | 0.005 | 0.022        | 0.007 | 0.019         | 0.005 | 0.025        | 0.007 |
| 3/23/2013 | 18   | 0.018         | 0.004 | 0.019        | 0.005 | 0.017         | 0.985 | 0.019        | 0.008 |
| 3/23/2013 | 19   | 0.018         | 0.004 | 0.019        | 0.007 | 0.016         | 0.985 | 0.017        | 0.006 |
| 3/23/2013 | 20   | 0.014         | 0.006 | 0.028        | 0.009 | 0.012         | 0.985 | 0.011        | 0.006 |
| 3/23/2013 | 21   | 0.012         | 0.007 | 0.022        | 0.007 | 0.015         | 0.985 | 0.012        | 0.005 |
| 3/23/2013 | 22   | 0.011         | 0.005 | 0.011        | 0.006 | 0.016         | 0.985 | 0.010        | 0.006 |
| 3/23/2013 | 23   | 0.010         | 0.004 | 0.012        | 0.005 | 0.014         | 0.985 | 0.009        | 0.008 |
| 3/24/2013 | 0    | 0.011         | 0.006 | 0.012        | 0.004 | 0.012         | 0.985 | 0.020        | 0.006 |
| 3/24/2013 | 1    | 0.012         | 0.006 | 0.012        | 0.005 | 0.010         | 0.985 | 0.011        | 0.005 |
| 3/24/2013 | 2    | 0.013         | 0.006 | 0.019        | 0.006 | 0.010         | 0.985 | 0.011        | 0.004 |
| 3/24/2013 | 3    | 0.013         | 0.006 | 0.015        | 0.006 | 0.012         | 0.985 | 0.013        | 0.004 |
| 3/24/2013 | 4    | 0.013         | 0.006 | 0.016        | 0.003 | 0.014         | 0.985 | 0.012        | 0.003 |
| 3/24/2013 | 5    | 0.014         | 0.006 | 0.010        | 0.006 | 0.012         | 0.985 | 0.011        | 0.002 |
| 3/24/2013 | 6    | 0.011         | 0.005 | 0.012        | 0.005 | 0.015         | 0.985 | 0.013        | 0.001 |
| 3/24/2013 | 7    | 0.017         | 0.005 | 0.014        | 0.004 | 0.021         | 0.985 | 0.013        | 0.002 |
| 3/24/2013 | 8    | 0.013         | 0.005 | 0.015        | 0.006 | 0.033         | 0.985 | 0.016        | 0.004 |
| 3/24/2013 | 9    | 0.019         | 0.007 | 0.015        | 0.004 | 0.014         | 0.985 | 0.013        | 0.003 |
| 3/24/2013 | 10   | 0.017         | 0.005 | 0.010        | 0.004 | 0.013         | 0.985 | 0.013        | 0.001 |
| 3/24/2013 | 11   | 0.012         | 0.001 | 0.012        | 0.005 | 0.013         | 0.985 | 0.011        | 0.003 |
| 3/24/2013 | 12   | 0.012         | 0.002 | 0.015        | 0.006 | 0.013         | 0.985 | 0.010        | 0.004 |
| 3/24/2013 | 13   | 0.019         | 0.005 | 0.014        | 0.006 | 0.013         | 0.985 | 0.018        | 0.004 |
| 3/24/2013 | 14   | 0.014         | 0.005 | 0.016        | 0.005 | 0.016         | 0.985 | 0.020        | 0.004 |
| 3/24/2013 | 15   | 0.018         | 0.006 | 0.015        | 0.005 | 0.016         | 0.985 | 0.016        | 0.008 |
| 3/24/2013 | 16   | 0.025         | 0.005 | 0.018        | 0.005 | 0.015         | 0.985 | 0.019        | 0.009 |
| 3/24/2013 | 17   | 0.017         | 0.006 | 0.018        | 0.006 | 0.020         | 0.985 | 0.020        | 0.007 |
| 3/24/2013 | 18   | 0.021         | 0.008 | 0.019        | 0.009 | 0.018         | 0.985 | 0.020        | 0.006 |
| 3/24/2013 | 19   | 0.023         | 0.010 | 0.019        | 0.009 | 0.026         | 0.985 | 0.040        | 0.005 |
| 3/24/2013 | 20   | 0.018         | 0.008 | 0.022        | 0.008 | 0.019         | 0.985 | 0.021        | 0.008 |
| 3/24/2013 | 21   | 0.019         | 0.007 | 0.025        | 0.008 | 0.027         | 0.985 | 0.019        | 0.009 |
| 3/24/2013 | 22   | 0.023         | 0.010 | 0.031        | 0.011 | 0.024         | 0.985 | 0.015        | 0.009 |
| 3/24/2013 | 23   | 0.020         | 0.010 | 0.025        | 0.013 | 0.023         | 0.985 | 0.017        | 0.009 |



## DESERT SUNLIGHT SOLAR FARM

### TABLE 3 - HOURLY BAM DATA

(Please refer to Table 3 cover page for additional details.)

All values are in units of milligrams per cubic meter.

| Date      | Hour | North Station |       | East Station |       | South Station |       | West Station |       |
|-----------|------|---------------|-------|--------------|-------|---------------|-------|--------------|-------|
|           |      | PM10          | PM2.5 | PM10         | PM2.5 | PM10          | PM2.5 | PM10         | PM2.5 |
| 3/25/2013 | 0    | 0.021         | 0.008 | 0.028        | 0.010 | 0.022         | 0.985 | 0.029        | 0.009 |
| 3/25/2013 | 1    | 0.022         | 0.009 | 0.023        | 0.008 | 0.020         | 0.985 | 0.020        | 0.009 |
| 3/25/2013 | 2    | 0.016         | 0.007 | 0.021        | 0.008 | 0.017         | 0.985 | 0.020        | 0.009 |
| 3/25/2013 | 3    | 0.018         | 0.006 | 0.020        | 0.008 | 0.018         | 0.985 | 0.021        | 0.007 |
| 3/25/2013 | 4    | 0.020         | 0.006 | 0.020        | 0.010 | 0.017         | 0.985 | 0.013        | 0.005 |
| 3/25/2013 | 5    | 0.017         | 0.007 | 0.020        | 0.008 | 0.020         | 0.985 | 0.016        | 0.006 |
| 3/25/2013 | 6    | 0.015         | 0.009 | 0.024        | 0.007 | 0.021         | 0.985 | 0.017        | 0.004 |
| 3/25/2013 | 7    | 0.016         | 0.010 | 0.025        | 0.009 | 0.021         | 0.985 | 0.022        | 0.004 |
| 3/25/2013 | 8    | 0.017         | 0.007 | 0.090        | 0.018 | 0.023         | 0.985 | 0.017        | 0.006 |
| 3/25/2013 | 9    | 0.023         | 0.007 | 0.019        | 0.003 | 0.030         | 0.985 | 0.018        | 0.004 |
| 3/25/2013 | 10   | 0.015         | 0.006 | 0.016        | 0.005 | 0.021         | 0.004 | 0.027        | 0.003 |
| 3/25/2013 | 11   | 0.014         | 0.006 | 0.021        | 0.006 | 0.019         | 0.002 | 0.985        | 0.985 |
| 3/25/2013 | 12   | 0.017         | 0.008 | 0.017        | 0.005 | ---           | ---   | 0.024        | 0.012 |
| 3/25/2013 | 13   | 0.015         | 0.006 | 0.015        | 0.005 | ---           | ---   | 0.026        | 0.008 |
| 3/25/2013 | 14   | 0.016         | 0.004 | 0.010        | 0.006 | ---           | ---   | 0.012        | 0.004 |
| 3/25/2013 | 15   | 0.013         | 0.004 | 0.010        | 0.005 | ---           | ---   | 0.013        | 0.002 |
| 3/25/2013 | 16   | 0.011         | 0.003 | 0.011        | 0.002 | ---           | ---   | 0.014        | 0.002 |
| 3/25/2013 | 17   | 0.011         | 0.005 | 0.012        | 0.005 | ---           | ---   | 0.017        | 0.002 |
| 3/25/2013 | 18   | 0.013         | 0.008 | 0.018        | 0.007 | ---           | ---   | 0.012        | 0.002 |
| 3/25/2013 | 19   | 0.019         | 0.007 | 0.020        | 0.008 | 0.985         | 0.985 | 0.022        | 0.006 |
| 3/25/2013 | 20   | 0.030         | 0.008 | 0.031        | 0.009 | 0.019         | 0.007 | 0.022        | 0.008 |
| 3/25/2013 | 21   | 0.018         | 0.010 | 0.024        | 0.008 | 0.015         | 0.008 | 0.016        | 0.007 |
| 3/25/2013 | 22   | 0.016         | 0.008 | 0.018        | 0.009 | 0.017         | 0.006 | 0.022        | 0.005 |
| 3/25/2013 | 23   | 0.020         | 0.007 | 0.021        | 0.009 | 0.020         | 0.005 | 0.021        | 0.006 |
| 3/26/2013 | 0    | 0.027         | 0.007 | 0.031        | 0.007 | 0.026         | 0.005 | 0.029        | 0.008 |
| 3/26/2013 | 1    | 0.035         | 0.008 | 0.031        | 0.010 | 0.031         | 0.006 | 0.029        | 0.010 |
| 3/26/2013 | 2    | 0.019         | 0.008 | 0.029        | 0.013 | 0.031         | 0.009 | 0.026        | 0.010 |
| 3/26/2013 | 3    | 0.030         | 0.007 | 0.038        | 0.011 | 0.023         | 0.008 | 0.029        | 0.007 |
| 3/26/2013 | 4    | 0.027         | 0.009 | 0.032        | 0.011 | 0.025         | 0.007 | 0.027        | 0.007 |
| 3/26/2013 | 5    | 0.026         | 0.011 | 0.031        | 0.011 | 0.026         | 0.005 | 0.027        | 0.009 |
| 3/26/2013 | 6    | 0.022         | 0.008 | 0.031        | 0.008 | 0.024         | 0.006 | 0.023        | 0.008 |
| 3/26/2013 | 7    | 0.026         | 0.008 | 0.024        | 0.009 | 0.033         | 0.010 | 0.027        | 0.007 |
| 3/26/2013 | 8    | 0.030         | 0.009 | 0.029        | 0.011 | 0.043         | 0.010 | 0.035        | 0.008 |
| 3/26/2013 | 9    | 0.027         | 0.009 | 0.027        | 0.012 | 0.047         | 0.010 | 0.035        | 0.008 |
| 3/26/2013 | 10   | 0.031         | 0.009 | 0.027        | 0.010 | 0.024         | 0.009 | 0.040        | 0.009 |
| 3/26/2013 | 11   | 0.034         | 0.008 | 0.025        | 0.009 | 0.029         | 0.010 | 0.477        | 0.153 |
| 3/26/2013 | 12   | 0.026         | 0.009 | 0.030        | 0.009 | 0.032         | 0.011 | 0.028        | 0.013 |
| 3/26/2013 | 13   | 0.028         | 0.008 | 0.022        | 0.010 | 0.031         | 0.009 | 0.032        | 0.011 |
| 3/26/2013 | 14   | 0.020         | 0.007 | 0.021        | 0.008 | 0.031         | 0.009 | 0.024        | 0.009 |
| 3/26/2013 | 15   | 0.016         | 0.006 | 0.026        | 0.004 | 0.017         | 0.004 | 0.009        | 0.005 |
| 3/26/2013 | 16   | 0.014         | 0.003 | 0.015        | 0.003 | 0.019         | 0.001 | 0.010        | 0.003 |
| 3/26/2013 | 17   | 0.023         | 0.004 | 0.033        | 0.005 | 0.027         | 0.005 | 0.015        | 0.006 |
| 3/26/2013 | 18   | 0.019         | 0.006 | 0.019        | 0.007 | 0.027         | 0.007 | 0.020        | 0.006 |
| 3/26/2013 | 19   | 0.019         | 0.006 | 0.017        | 0.008 | 0.021         | 0.005 | 0.020        | 0.004 |
| 3/26/2013 | 20   | 0.028         | 0.006 | 0.026        | 0.009 | 0.022         | 0.007 | 0.026        | 0.006 |
| 3/26/2013 | 21   | 0.034         | 0.009 | 0.037        | 0.011 | 0.046         | 0.009 | 0.033        | 0.010 |
| 3/26/2013 | 22   | 0.031         | 0.009 | 0.031        | 0.011 | 0.030         | 0.010 | 0.033        | 0.011 |
| 3/26/2013 | 23   | 0.027         | 0.008 | 0.033        | 0.010 | 0.029         | 0.011 | 0.028        | 0.009 |



## DESERT SUNLIGHT SOLAR FARM

### TABLE 3 - HOURLY BAM DATA

(Please refer to Table 3 cover page for additional details.)

All values are in units of milligrams per cubic meter.

| Date      | Hour | North Station |       | East Station |       | South Station |       | West Station |       |
|-----------|------|---------------|-------|--------------|-------|---------------|-------|--------------|-------|
|           |      | PM10          | PM2.5 | PM10         | PM2.5 | PM10          | PM2.5 | PM10         | PM2.5 |
| 3/27/2013 | 0    | 0.025         | 0.009 | 0.028        | 0.009 | 0.027         | 0.011 | 0.027        | 0.011 |
| 3/27/2013 | 1    | 0.019         | 0.009 | 0.020        | 0.008 | 0.025         | 0.008 | 0.014        | 0.010 |
| 3/27/2013 | 2    | 0.020         | 0.009 | 0.026        | 0.010 | 0.015         | 0.005 | 0.018        | 0.009 |
| 3/27/2013 | 3    | 0.018         | 0.008 | 0.022        | 0.012 | 0.017         | 0.006 | 0.018        | 0.008 |
| 3/27/2013 | 4    | 0.018         | 0.006 | 0.018        | 0.010 | 0.015         | 0.006 | 0.013        | 0.006 |
| 3/27/2013 | 5    | 0.014         | 0.006 | 0.015        | 0.008 | 0.014         | 0.006 | 0.012        | 0.006 |
| 3/27/2013 | 6    | 0.013         | 0.006 | 0.011        | 0.007 | 0.013         | 0.006 | 0.013        | 0.005 |
| 3/27/2013 | 7    | 0.013         | 0.005 | 0.013        | 0.005 | 0.011         | 0.006 | 0.011        | 0.004 |
| 3/27/2013 | 8    | 0.012         | 0.006 | 0.032        | 0.006 | 0.012         | 0.005 | 0.008        | 0.004 |
| 3/27/2013 | 9    | 0.010         | 0.006 | 0.010        | 0.005 | 0.014         | 0.005 | 0.009        | 0.001 |
| 3/27/2013 | 10   | 0.013         | 0.005 | 0.010        | 0.003 | 0.012         | 0.005 | 0.016        | 0.002 |
| 3/27/2013 | 11   | 0.012         | 0.006 | 0.010        | 0.002 | 0.008         | 0.003 | 0.010        | 0.003 |
| 3/27/2013 | 12   | 0.009         | 0.004 | 0.009        | 0.002 | 0.009         | 0.002 | 0.009        | 0.002 |
| 3/27/2013 | 13   | 0.010         | 0.001 | 0.010        | 0.003 | 0.013         | 0.002 | 0.007        | 0.004 |
| 3/27/2013 | 14   | 0.010         | 0.001 | 0.011        | 0.003 | 0.020         | 0.002 | 0.010        | 0.003 |
| 3/27/2013 | 15   | 0.011         | 0.003 | 0.011        | 0.003 | 0.019         | 0.004 | 0.013        | 0.005 |
| 3/27/2013 | 16   | 0.012         | 0.003 | 0.016        | 0.002 | 0.029         | 0.003 | 0.011        | 0.006 |
| 3/27/2013 | 17   | 0.017         | 0.003 | 0.015        | 0.002 | 0.018         | 0.001 | 0.017        | 0.004 |
| 3/27/2013 | 18   | 0.010         | 0.004 | 0.016        | 0.003 | 0.015         | 0.003 | 0.017        | 0.005 |
| 3/27/2013 | 19   | 0.018         | 0.004 | 0.011        | 0.006 | 0.016         | 0.003 | 0.014        | 0.006 |
| 3/27/2013 | 20   | 0.018         | 0.005 | 0.019        | 0.004 | 0.017         | 0.002 | 0.013        | 0.004 |
| 3/27/2013 | 21   | 0.016         | 0.007 | 0.016        | 0.002 | 0.020         | 0.004 | 0.035        | 0.004 |
| 3/27/2013 | 22   | 0.016         | 0.006 | 0.023        | 0.007 | 0.017         | 0.006 | 0.012        | 0.007 |
| 3/27/2013 | 23   | 0.014         | 0.005 | 0.015        | 0.011 | 0.014         | 0.007 | 0.017        | 0.009 |
| 3/28/2013 | 0    | 0.014         | 0.005 | 0.022        | 0.009 | 0.017         | 0.006 | 0.022        | 0.007 |
| 3/28/2013 | 1    | 0.015         | 0.005 | 0.010        | 0.008 | 0.012         | 0.007 | 0.015        | 0.004 |
| 3/28/2013 | 2    | 0.012         | 0.006 | 0.012        | 0.011 | 0.013         | 0.008 | 0.014        | 0.004 |
| 3/28/2013 | 3    | 0.012         | 0.006 | 0.014        | 0.010 | 0.013         | 0.008 | 0.010        | 0.003 |
| 3/28/2013 | 4    | 0.011         | 0.004 | 0.013        | 0.004 | 0.012         | 0.006 | 0.015        | 0.003 |
| 3/28/2013 | 5    | 0.008         | 0.004 | 0.013        | 0.003 | 0.011         | 0.006 | 0.009        | 0.005 |
| 3/28/2013 | 6    | 0.007         | 0.006 | 0.013        | 0.004 | 0.008         | 0.003 | 0.008        | 0.005 |
| 3/28/2013 | 7    | 0.009         | 0.006 | 0.011        | 0.003 | 0.007         | 0.002 | 0.008        | 0.004 |
| 3/28/2013 | 8    | 0.011         | 0.005 | 0.011        | 0.004 | 0.010         | 0.004 | 0.010        | 0.005 |
| 3/28/2013 | 9    | 0.010         | 0.004 | 0.010        | 0.005 | 0.013         | 0.005 | 0.011        | 0.003 |
| 3/28/2013 | 10   | 0.012         | 0.004 | 0.018        | 0.005 | 0.023         | 0.005 | 0.010        | 0.003 |
| 3/28/2013 | 11   | 0.015         | 0.004 | 0.014        | 0.005 | 0.010         | 0.006 | 0.018        | 0.005 |
| 3/28/2013 | 12   | 0.010         | 0.002 | 0.012        | 0.005 | 0.011         | 0.005 | 0.008        | 0.006 |
| 3/28/2013 | 13   | 0.010         | 0.001 | 0.009        | 0.004 | 0.010         | 0.003 | 0.009        | 0.004 |
| 3/28/2013 | 14   | 0.014         | 0.000 | 0.009        | 0.002 | 0.016         | 0.003 | 0.008        | 0.003 |
| 3/28/2013 | 15   | 0.011         | 0.002 | 0.009        | 0.004 | 0.019         | 0.004 | 0.010        | 0.001 |
| 3/28/2013 | 16   | 0.009         | 0.005 | 0.007        | 0.005 | 0.015         | 0.004 | 0.012        | 0.001 |
| 3/28/2013 | 17   | 0.010         | 0.004 | 0.010        | 0.005 | 0.019         | 0.005 | 0.011        | 0.002 |
| 3/28/2013 | 18   | 0.012         | 0.002 | 0.016        | 0.006 | 0.014         | 0.005 | 0.009        | 0.003 |
| 3/28/2013 | 19   | 0.010         | 0.004 | 0.008        | 0.006 | 0.010         | 0.002 | 0.009        | 0.003 |
| 3/28/2013 | 20   | 0.010         | 0.005 | 0.007        | 0.006 | 0.008         | 0.001 | 0.009        | 0.001 |
| 3/28/2013 | 21   | 0.009         | 0.005 | 0.010        | 0.004 | 0.010         | 0.001 | 0.007        | 0.001 |
| 3/28/2013 | 22   | 0.005         | 0.003 | 0.011        | 0.003 | 0.008         | 0.000 | 0.008        | 0.001 |
| 3/28/2013 | 23   | 0.006         | 0.001 | 0.009        | 0.003 | 0.009         | 0.001 | 0.009        | 0.003 |



## DESERT SUNLIGHT SOLAR FARM

### TABLE 3 - HOURLY BAM DATA

(Please refer to Table 3 cover page for additional details.)

All values are in units of milligrams per cubic meter.

| Date      | Hour | North Station |       | East Station |       | South Station |       | West Station |       |
|-----------|------|---------------|-------|--------------|-------|---------------|-------|--------------|-------|
|           |      | PM10          | PM2.5 | PM10         | PM2.5 | PM10          | PM2.5 | PM10         | PM2.5 |
| 3/29/2013 | 0    | 0.008         | 0.001 | 0.010        | 0.004 | 0.011         | 0.001 | 0.010        | 0.004 |
| 3/29/2013 | 1    | 0.008         | 0.003 | 0.010        | 0.005 | 0.009         | 0.003 | 0.009        | 0.005 |
| 3/29/2013 | 2    | 0.009         | 0.004 | 0.009        | 0.004 | 0.010         | 0.002 | 0.010        | 0.006 |
| 3/29/2013 | 3    | 0.015         | 0.006 | 0.011        | 0.004 | 0.013         | 0.004 | 0.014        | 0.006 |
| 3/29/2013 | 4    | 0.012         | 0.006 | 0.017        | 0.006 | 0.015         | 0.004 | 0.013        | 0.005 |
| 3/29/2013 | 5    | 0.013         | 0.004 | 0.014        | 0.008 | 0.011         | 0.002 | 0.011        | 0.002 |
| 3/29/2013 | 6    | 0.012         | 0.004 | 0.014        | 0.007 | 0.012         | 0.003 | 0.011        | 0.005 |
| 3/29/2013 | 7    | 0.012         | 0.004 | 0.013        | 0.005 | 0.016         | 0.003 | 0.012        | 0.006 |
| 3/29/2013 | 8    | 0.011         | 0.004 | 0.011        | 0.003 | 0.016         | 0.003 | 0.009        | 0.003 |
| 3/29/2013 | 9    | 0.007         | 0.002 | 0.010        | 0.002 | 0.010         | 0.002 | 0.006        | 0.002 |
| 3/29/2013 | 10   | 0.007         | 0.000 | 0.009        | 0.003 | 0.009         | 0.002 | 0.007        | 0.005 |
| 3/29/2013 | 11   | 0.006         | 0.000 | 0.008        | 0.001 | 0.009         | 0.001 | 0.007        | 0.005 |
| 3/29/2013 | 12   | 0.006         | 0.003 | 0.007        | 0.000 | 0.008         | 0.001 | 0.008        | 0.001 |
| 3/29/2013 | 13   | 0.009         | 0.004 | 0.009        | 0.003 | 0.009         | 0.003 | 0.011        | 0.001 |
| 3/29/2013 | 14   | 0.008         | 0.004 | 0.010        | 0.003 | 0.013         | 0.003 | 0.011        | 0.002 |
| 3/29/2013 | 15   | 0.010         | 0.003 | 0.012        | 0.004 | 0.011         | 0.003 | 0.010        | 0.002 |
| 3/29/2013 | 16   | 0.010         | 0.004 | 0.013        | 0.007 | 0.011         | 0.004 | 0.011        | 0.004 |
| 3/29/2013 | 17   | 0.011         | 0.005 | 0.025        | 0.006 | 0.013         | 0.004 | 0.012        | 0.005 |
| 3/29/2013 | 18   | 0.011         | 0.004 | 0.016        | 0.006 | 0.013         | 0.003 | 0.010        | 0.006 |
| 3/29/2013 | 19   | 0.011         | 0.003 | 0.008        | 0.006 | 0.010         | 0.004 | 0.009        | 0.006 |
| 3/29/2013 | 20   | 0.010         | 0.003 | 0.011        | 0.006 | 0.009         | 0.005 | 0.010        | 0.004 |
| 3/29/2013 | 21   | 0.011         | 0.004 | 0.014        | 0.007 | 0.012         | 0.006 | 0.010        | 0.004 |
| 3/29/2013 | 22   | 0.010         | 0.002 | 0.014        | 0.007 | 0.014         | 0.005 | 0.011        | 0.004 |
| 3/29/2013 | 23   | 0.008         | 0.001 | 0.012        | 0.007 | 0.012         | 0.004 | 0.008        | 0.003 |
| 3/30/2013 | 0    | 0.008         | 0.002 | 0.010        | 0.006 | 0.010         | 0.006 | 0.009        | 0.004 |
| 3/30/2013 | 1    | 0.010         | 0.002 | 0.010        | 0.005 | 0.011         | 0.005 | 0.011        | 0.006 |
| 3/30/2013 | 2    | 0.010         | 0.002 | 0.016        | 0.007 | 0.016         | 0.006 | 0.011        | 0.005 |
| 3/30/2013 | 3    | 0.008         | 0.004 | 0.017        | 0.006 | 0.008         | 0.007 | 0.011        | 0.002 |
| 3/30/2013 | 4    | 0.017         | 0.006 | 0.020        | 0.007 | 0.010         | 0.006 | 0.017        | 0.004 |
| 3/30/2013 | 5    | 0.015         | 0.006 | 0.022        | 0.008 | 0.012         | 0.007 | 0.013        | 0.006 |
| 3/30/2013 | 6    | 0.018         | 0.006 | 0.019        | 0.007 | 0.017         | 0.006 | 0.016        | 0.005 |
| 3/30/2013 | 7    | 0.022         | 0.006 | 0.017        | 0.006 | 0.017         | 0.005 | 0.017        | 0.006 |
| 3/30/2013 | 8    | 0.017         | 0.005 | 0.016        | 0.005 | 0.020         | 0.004 | 0.018        | 0.006 |
| 3/30/2013 | 9    | 0.019         | 0.003 | 0.013        | 0.004 | 0.012         | 0.005 | 0.016        | 0.004 |
| 3/30/2013 | 10   | 0.011         | 0.004 | 0.013        | 0.005 | 0.016         | 0.004 | 0.017        | 0.005 |
| 3/30/2013 | 11   | 0.016         | 0.004 | 0.016        | 0.004 | 0.013         | 0.006 | 0.017        | 0.006 |
| 3/30/2013 | 12   | 0.014         | 0.002 | 0.014        | 0.006 | 0.014         | 0.005 | 0.017        | 0.006 |
| 3/30/2013 | 13   | 0.012         | 0.003 | 0.012        | 0.006 | 0.015         | 0.004 | 0.012        | 0.005 |
| 3/30/2013 | 14   | 0.012         | 0.003 | 0.018        | 0.006 | 0.014         | 0.006 | 0.013        | 0.004 |
| 3/30/2013 | 15   | 0.013         | 0.005 | 0.011        | 0.007 | 0.017         | 0.006 | 0.014        | 0.004 |
| 3/30/2013 | 16   | 0.014         | 0.007 | 0.016        | 0.006 | 0.015         | 0.005 | 0.012        | 0.003 |
| 3/30/2013 | 17   | 0.014         | 0.005 | 0.015        | 0.006 | 0.016         | 0.004 | 0.013        | 0.004 |
| 3/30/2013 | 18   | 0.019         | 0.002 | 0.014        | 0.006 | 0.013         | 0.005 | 0.015        | 0.005 |
| 3/30/2013 | 19   | 0.011         | 0.002 | 0.013        | 0.004 | 0.012         | 0.004 | 0.012        | 0.005 |
| 3/30/2013 | 20   | 0.012         | 0.005 | 0.010        | 0.002 | 0.012         | 0.004 | 0.010        | 0.004 |
| 3/30/2013 | 21   | 0.020         | 0.005 | 0.011        | 0.005 | 0.018         | 0.004 | 0.012        | 0.004 |
| 3/30/2013 | 22   | 0.012         | 0.003 | 0.020        | 0.005 | 0.016         | 0.005 | 0.015        | 0.004 |
| 3/30/2013 | 23   | 0.015         | 0.004 | 0.016        | 0.005 | 0.014         | 0.005 | 0.013        | 0.004 |



## DESERT SUNLIGHT SOLAR FARM

### TABLE 3 - HOURLY BAM DATA

(Please refer to Table 3 cover page for additional details.)

All values are in units of milligrams per cubic meter.

| Date      | Hour | North Station |       | East Station |        | South Station |       | West Station |       |
|-----------|------|---------------|-------|--------------|--------|---------------|-------|--------------|-------|
|           |      | PM10          | PM2.5 | PM10         | PM2.5  | PM10          | PM2.5 | PM10         | PM2.5 |
| 3/31/2013 | 0    | 0.010         | 0.004 | 0.014        | 0.005  | 0.015         | 0.006 | 0.018        | 0.005 |
| 3/31/2013 | 1    | 0.012         | 0.003 | 0.019        | 0.006  | 0.015         | 0.005 | 0.013        | 0.005 |
| 3/31/2013 | 2    | 0.016         | 0.004 | 0.018        | 0.006  | 0.018         | 0.003 | 0.014        | 0.003 |
| 3/31/2013 | 3    | 0.012         | 0.004 | 0.016        | 0.004  | 0.015         | 0.001 | 0.013        | 0.003 |
| 3/31/2013 | 4    | 0.013         | 0.004 | 0.014        | 0.006  | 0.016         | 0.001 | 0.012        | 0.002 |
| 3/31/2013 | 5    | 0.013         | 0.004 | 0.019        | 0.005  | 0.010         | 0.003 | 0.013        | 0.001 |
| 3/31/2013 | 6    | 0.011         | 0.004 | 0.014        | 0.005  | 0.009         | 0.004 | 0.012        | 0.004 |
| 3/31/2013 | 7    | 0.011         | 0.003 | 0.013        | 0.004  | 0.011         | 0.004 | 0.012        | 0.005 |
| 3/31/2013 | 8    | 0.012         | 0.002 | 0.011        | 0.002  | 0.012         | 0.002 | 0.010        | 0.006 |
| 3/31/2013 | 9    | 0.012         | 0.003 | 0.015        | 0.003  | 0.010         | 0.001 | 0.011        | 0.004 |
| 3/31/2013 | 10   | 0.011         | 0.004 | 0.006        | 0.006  | 0.010         | 0.004 | 0.011        | 0.004 |
| 3/31/2013 | 11   | 0.011         | 0.003 | 0.006        | 0.004  | 0.013         | 0.006 | 0.009        | 0.004 |
| 3/31/2013 | 12   | 0.005         | 0.002 | 0.005        | -0.001 | 0.011         | 0.005 | 0.009        | 0.003 |
| 3/31/2013 | 13   | 0.001         | 0.001 | 0.003        | 0.001  | 0.006         | 0.003 | 0.007        | 0.001 |
| 3/31/2013 | 14   | 0.005         | 0.001 | 0.007        | 0.005  | 0.020         | 0.004 | 0.016        | 0.003 |
| 3/31/2013 | 15   | 0.008         | 0.002 | 0.013        | 0.005  | 0.011         | 0.005 | 0.008        | 0.003 |
| 3/31/2013 | 16   | 0.023         | 0.002 | 0.017        | 0.004  | 0.018         | 0.006 | 0.016        | 0.000 |
| 3/31/2013 | 17   | 0.017         | 0.002 | 0.031        | 0.005  | 0.015         | 0.006 | 0.018        | 0.002 |
| 3/31/2013 | 18   | 0.058         | 0.003 | 0.059        | 0.006  | 0.046         | 0.004 | 0.065        | 0.005 |
| 3/31/2013 | 19   | 0.033         | 0.005 | 0.030        | 0.007  | 0.030         | 0.004 | 0.026        | 0.005 |
| 3/31/2013 | 20   | 0.012         | 0.007 | 0.018        | 0.003  | 0.016         | 0.004 | 0.014        | 0.005 |
| 3/31/2013 | 21   | 0.012         | 0.006 | 0.013        | 0.001  | 0.014         | 0.003 | 0.012        | 0.006 |
| 3/31/2013 | 22   | 0.010         | 0.004 | 0.014        | 0.003  | 0.012         | 0.002 | 0.009        | 0.003 |
| 3/31/2013 | 23   | 0.016         | 0.005 | 0.011        | 0.004  | 0.011         | 0.002 | 0.006        | 0.003 |



# Table 4

## Monitored Constituents

The table below shows the sample dates. Table 4 is on the following page.

| Station | Week   | Sample Date | Sample ID  | Work Order | Duration |
|---------|--------|-------------|------------|------------|----------|
| North   | Week 1 | 3/4/2013    | QFF 13-104 | 1306743    | 24       |
|         | Week 2 | 3/13/2013   | QFF 13-099 | 1307904    | 24       |
|         | Week 3 | 3/19/2013   | QFF 13-106 | 1308169    | 24       |
|         | Week 4 | 3/26/2013   | QFF 13-110 | 1309143    | 24       |
| East    | Week 1 | 3/4/2013    | QFF 13-103 | 1306744    | 24       |
|         | Week 2 | 3/12/2013   | QFF 13-097 | 1307902    | 24       |
|         | Week 3 | 3/19/2013   | QFF 13-101 | 1308170    | 24       |
|         | Week 4 | 3/26/2013   | QFF 13-109 | 1309142    | 24       |
| West    | Week 1 | 3/4/2013    | QFF 13-105 | 1306745    | 22.5     |
|         | Week 2 | 3/12/2013   | QFF 13-098 | 1307903    | 24       |
|         | Week 3 | 3/19/2013   | QFF 13-107 | 1308168    | 24       |
|         | Week 4 | 3/26/2013   | QFF 13-111 | 1309144    | 24       |
| South   | Week 1 | 3/4/2013    | QFF 13-102 | 1306742    | 24       |
|         | Week 2 | 3/12/2013   | QFF 13-096 | 1307901    | 24       |
|         | Week 3 | 3/19/2013   | QFF 13-100 | 1307171    | 24       |
|         | Week 4 | 3/26/2013   | QFF 13-108 | 1309141    | 24       |



**Table 4: Monitored Constituents** See Footnotes

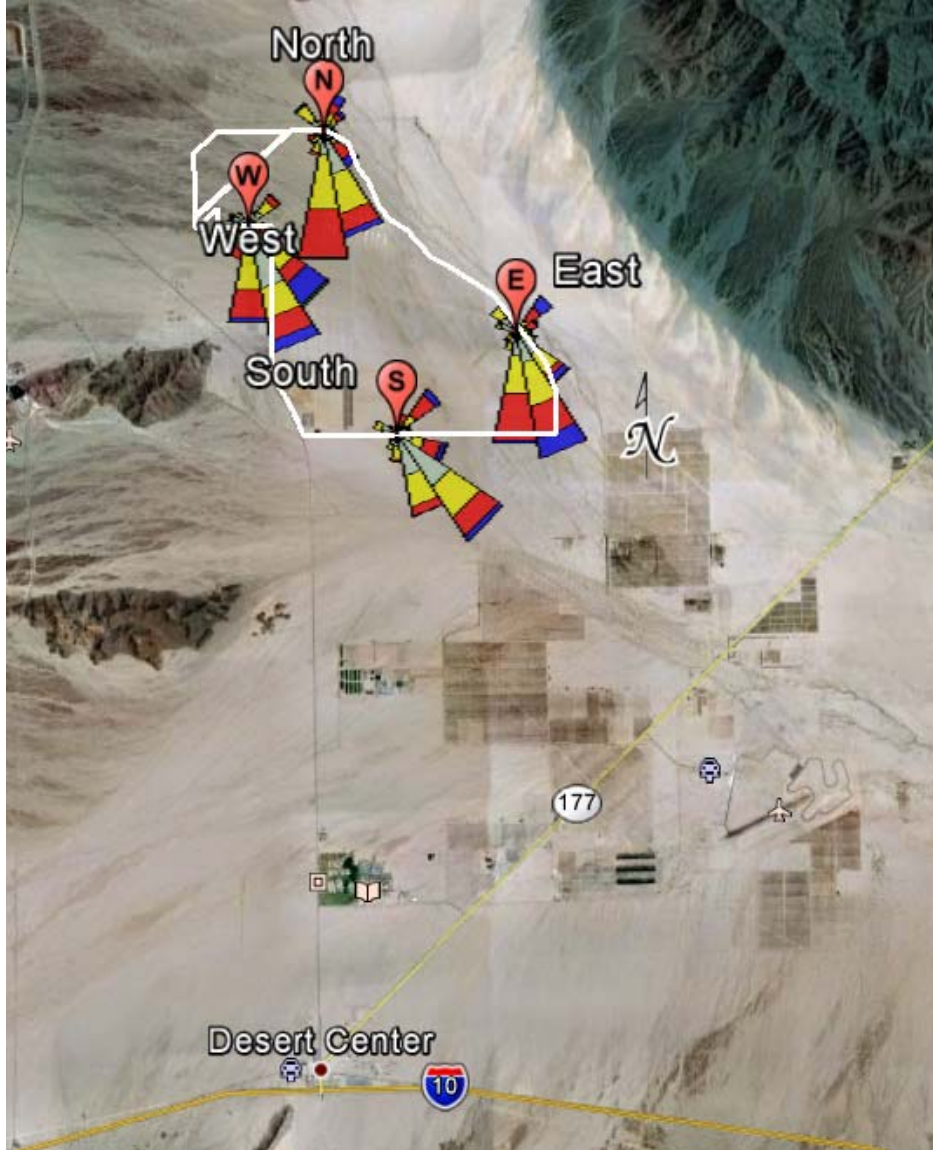
| Analyte          | Week   | North Station | East Station | West Station | South Station |
|------------------|--------|---------------|--------------|--------------|---------------|
| Elemental Carbon | Week 1 | 0.3           | 0.2          | 0.31         | 0.35          |
|                  | Week 2 | 0.32          | 0.39         | 0.33         | 0.18          |
|                  | Week 3 | 0.44          | 0.43         | 0.42         | 0.38          |
|                  | Week 4 | 0.58          | 0.48         | 0.57         | 0.44          |
| Arsenic          | Week 1 | < LOD         | < LOD        | < LOD        | < LOD         |
|                  | Week 2 | < LOD         | < LOD        | < LOD        | < LOD         |
|                  | Week 3 | < LOD         | < LOD        | < LOD        | 0.019         |
|                  | Week 4 | < LOD         | < LOD        | < LOD        | < LOD         |
| Beryllium        | Week 1 | < LOD         | < LOD        | < LOD        | < LOD         |
|                  | Week 2 | < LOD         | < LOD        | < LOD        | < LOD         |
|                  | Week 3 | < LOD         | < LOD        | < LOD        | < LOD         |
|                  | Week 4 | < LOD         | < LOD        | < LOD        | < LOD         |
| Cadmium          | Week 1 | < LOD         | < LOD        | < LOD        | < LOD         |
|                  | Week 2 | < LOD         | < LOD        | < LOD        | < LOD         |
|                  | Week 3 | 0.00098       | < LOD        | < LOD        | < LOD         |
|                  | Week 4 | < LOD         | < LOD        | < LOD        | < LOD         |
| Copper           | Week 1 | 0.096         | 0.11         | 0.064        | 0.0097        |
|                  | Week 2 | 0.033         | 0.063        | 0.028        | 0.011         |
|                  | Week 3 | 0.025         | 0.04         | 0.02         | 0.007         |
|                  | Week 4 | 0.019         | 0.031        | 0.027        | 0.011         |
| Lead             | Week 1 | < LOD         | < LOD        | < LOD        | < LOD         |
|                  | Week 2 | < LOD         | 0.0088       | < LOD        | 0.008         |
|                  | Week 3 | 0.01          | 0.0092       | 0.0087       | 0.012         |
|                  | Week 4 | 0.0087        | < LOD        | < LOD        | 0.011         |
| Manganese        | Week 1 | 0.017         | 0.013        | 0.011        | 0.012         |
|                  | Week 2 | 0.0076        | 0.0048       | 0.009        | 0.012         |
|                  | Week 3 | 0.018         | 0.021        | 0.023        | 0.025         |
|                  | Week 4 | 0.016         | 0.017        | 0.019        | 0.021         |
| Nickel           | Week 1 | < LOD         | < LOD        | < LOD        | < LOD         |
|                  | Week 2 | < LOD         | < LOD        | < LOD        | < LOD         |
|                  | Week 3 | < LOD         | < LOD        | < LOD        | < LOD         |
|                  | Week 4 | < LOD         | 0.00092      | 0.001        | 0.00098       |
| Selenium         | Week 1 | < LOD         | < LOD        | < LOD        | < LOD         |
|                  | Week 2 | < LOD         | < LOD        | < LOD        | < LOD         |
|                  | Week 3 | < LOD         | < LOD        | < LOD        | 0.016         |
|                  | Week 4 | < LOD         | < LOD        | < LOD        | < LOD         |

**Note 1:** All values are in units of micrograms per cubic meter.

**Note 2:** < LOD = Less than Limit of Detection (LOD).

**Note 3:** Sample dates are shown in the cover page for this table.





**Figure 1: Meteorological Data Summary**

The triangles in Figure 1 indicate the direction the wind was blowing **to** rather than **from**. The table below provides a brief explanation of the various wind speed classes.

| Color       | Wind Speed (knots) |
|-------------|--------------------|
| Cyan        | ≥ 22 knots         |
| Green       | 17 – 21 knots      |
| Blue        | 11 – 17 knots      |
| Red         | 7 – 11 knots       |
| Yellow      | 4 – 7 knots        |
| Light Green | 1 – 4 knots        |