

DOCKETED

Docket Number:	09-AFC-07C
Project Title:	Palen Solar Power Project - Compliance
TN #:	201281
Document Title:	Exh. 3071 Desert Sunlight Air Quality Monitoring Report June 2012
Description:	AQ MONITORING REPORT
Filer:	Ileene Anderson
Organization:	Center for Biological Diversity
Submitter Role:	Intervenor
Submission Date:	11/21/2013 4:14:14 PM
Docketed Date:	11/21/2013

**Desert Sunlight Solar Farm
Air Quality Monitoring Report**

June 2012





Report Index

Tables/Figures

Number	Table/Figure Name
Table 1	PM10 24-hour Time-Weighted Averages, All Sites
Table 2	PM2.5 24-hour Time-Weighted Averages, All Sites
Table 3	Hourly BAM Data, All Sites
Table 4	Monitored Constituents
Figure 1	Meteorological Data Summary



**Table 1: PM10 24-hour Time-Weighted Averages, All Sites
(See Footnotes)**

All values are in units of micrograms per cubic meter.

Date	North Station	East Station	South Station	West Station
6/1/2012	21	22	23	20
6/2/2012	27	32	26	24
6/3/2012	30	32	31	29
6/4/2012	26	26	25	25
6/5/2012	34	36	37	33
6/6/2012	33	18	39	32
6/7/2012	22	25	29	21
6/8/2012	37	37	48	35
6/9/2012	31	33	35	31
6/10/2012	31	33	33	31
6/11/2012	22	23	27	20
6/12/2012	24	25	42	---
6/13/2012	19	22	27	---
6/14/2012	30	35	41	35
6/15/2012	27	31	30	28
6/16/2012	21	23	22	18
6/17/2012	12	14	13	13
6/18/2012	19	33	57	34
6/19/2012	31	67	46	26
6/20/2012	20	21	28	22
6/21/2012	30	36	46	31
6/22/2012	29	29	28	26
6/23/2012	---	22	20	20
6/24/2012	---	20	16	16
6/25/2012	---	20	36	17
6/26/2012	17	16	23	17
6/27/2012	18	16	23	12
6/28/2012	23	23	42	21
6/29/2012	20	20	18	17
6/30/2012	17	17	17	17

Note 1: Please refer to Table 3 for the raw hourly data and treatment of valid and invalid values. All values in the above table are at actual conditions.

Note 2: Days marked 'No Data' are days for which there is no hourly data.

Note 3: Days marked (---) are days for which there is either more than 7 hours of negative data points or more than 12 hours of invalid data points.



**Table 2: PM2.5 24-hour Time-Weighted Averages, All Sites
(See Footnotes)**

All values are in units of micrograms per cubic meter.

Date	North Station	East Station	South Station	West Station
6/1/2012	8	9.1	11.9	---
6/2/2012	10.7	11.5	12.5	---
6/3/2012	10.8	14.2	13.1	---
6/4/2012	8.7	14.8	14.8	---
6/5/2012	7.4	11.6	9.3	---
6/6/2012	8.2	4.3	10.5	---
6/7/2012	7.8	5.7	13	---
6/8/2012	11.5	16.2	13.8	---
6/9/2012	11.7	9.6	16.7	---
6/10/2012	9.3	12	13	---
6/11/2012	6.5	5.5	12.3	---
6/12/2012	8.3	7.1	15.4	---
6/13/2012	6.8	5.8	---	---
6/14/2012	10.2	9.3	---	---
6/15/2012	10.7	21.5	13	8.7
6/16/2012	8.3	8.4	9.2	6.3
6/17/2012	4.3	3.1	6	3.5
6/18/2012	6.5	6.3	8.3	15.8
6/19/2012	6	7.4	---	5.1
6/20/2012	4.8	17	---	9.2
6/21/2012	13.8	59.9	26.9	7.3
6/22/2012	18.1	6.6	9	2.6
6/23/2012	11.5	7.6	8.2	2.9
6/24/2012	8.2	6.8	5.9	1.8
6/25/2012	7.4	7	6.7	3.9
6/26/2012	8.8	3.2	4.8	5.9
6/27/2012	6.4	5.8	6	5
6/28/2012	9.1	7.5	9.3	8.3
6/29/2012	7	5.3	4	7.1
6/30/2012	7.7	5	---	6.5

Note 1: Please refer to Table 3 for the raw hourly data and treatment of valid and invalid values. All values in the above table are at actual conditions.

Note 2: Days marked 'No Data' are days for which there is no hourly data.

Note 3: Days marked (---) are days for which there is either more than 7 hours of negative data points or more than 12 hours of invalid data points.



Table 3

Hourly BAM Data, All Stations

Please note the following:

1. PM10 and PM2.5 are at actual conditions.
2. Hours for which there are no BAM data are marked “---”
3. Data marked with **bold red** text is invalid due to either an error code produced by the BAM or hourly wind speed > 25 mph or an out-of-range concentration.
4. Data marked with **bold green** text is valid. However, this data is highlighted since there was either a “warning” error code or hourly shelter temperature change exceeding the instrument tolerance



DESERT SUNLIGHT SOLAR FARM

TABLE 3 - HOURLY BAM DATA

(Please refer to Table 3 cover page for additional details.)

All values are in units of milligrams per cubic meter.

Date	Hour	North Station		East Station		South Station		West Station	
		PM10	PM2.5	PM10	PM2.5	PM10	PM2.5	PM10	PM2.5
6/1/2012	0	0.013	0.008	0.011	0.005	0.015	0.008	0.006	0.985
6/1/2012	1	0.015	0.008	0.018	0.005	0.012	0.005	0.010	0.985
6/1/2012	2	0.018	0.006	0.018	0.009	0.013	0.005	0.012	0.985
6/1/2012	3	0.018	0.008	0.025	0.010	0.021	0.021	0.019	0.985
6/1/2012	4	0.029	0.011	0.030	0.009	0.028	0.011	0.027	0.985
6/1/2012	5	0.028	0.009	0.030	0.013	0.021	0.022	0.019	0.985
6/1/2012	6	0.026	0.008	0.023	0.012	0.058	0.011	0.026	0.985
6/1/2012	7	0.025	0.010	0.020	0.009	0.024	0.023	0.020	0.985
6/1/2012	8	0.023	0.009	0.022	0.007	0.028	0.016	0.022	0.985
6/1/2012	9	0.021	0.007	0.017	0.004	---	---	0.017	0.985
6/1/2012	10	0.017	0.007	0.985	0.985	0.985	0.985	0.021	0.985
6/1/2012	11	0.021	0.005	0.006	0.005	0.016	0.010	0.014	0.985
6/1/2012	12	0.010	0.005	0.006	0.004	0.012	0.010	0.016	0.985
6/1/2012	13	0.010	0.007	0.005	0.001	0.012	0.009	0.013	0.985
6/1/2012	14	0.985	0.985	0.044	0.005	0.018	0.010	0.013	0.985
6/1/2012	15	0.020	0.008	0.022	0.011	0.029	0.011	0.985	0.985
6/1/2012	16	0.018	0.007	0.017	0.008	0.019	0.009	0.034	0.985
6/1/2012	17	0.016	0.007	0.006	0.006	0.027	0.005	0.008	0.985
6/1/2012	18	0.019	0.006	0.024	0.006	0.014	0.005	0.028	0.985
6/1/2012	19	0.030	0.006	0.045	0.024	0.044	0.008	0.030	0.985
6/1/2012	20	0.018	0.007	0.027	0.013	0.019	0.008	0.023	0.985
6/1/2012	21	0.029	0.010	0.031	0.016	0.025	0.025	0.024	0.985
6/1/2012	22	0.028	0.013	0.027	0.015	0.032	0.015	0.028	0.985
6/1/2012	23	0.031	0.012	0.024	0.013	0.026	0.014	0.027	0.985
6/2/2012	0	0.032	0.012	0.026	0.012	0.026	0.017	0.026	0.985
6/2/2012	1	0.027	0.015	0.039	0.014	0.028	0.009	0.020	0.985
6/2/2012	2	0.022	0.012	0.027	0.012	0.027	0.012	0.016	0.985
6/2/2012	3	0.029	0.010	0.028	0.010	0.019	0.013	0.027	0.985
6/2/2012	4	0.020	0.009	0.074	0.030	0.024	0.010	0.019	0.985
6/2/2012	5	0.021	0.009	0.020	0.010	0.018	0.010	0.019	0.985
6/2/2012	6	0.020	0.010	0.028	0.009	0.021	0.010	0.018	0.985
6/2/2012	7	0.018	0.010	0.013	0.020	0.021	0.009	0.013	0.985
6/2/2012	8	0.018	0.008	0.017	0.009	0.015	0.010	0.018	0.985
6/2/2012	9	0.032	0.008	0.018	0.007	0.017	0.009	0.015	0.985
6/2/2012	10	0.025	0.008	0.018	0.007	0.019	0.027	0.024	0.985
6/2/2012	11	0.025	0.011	0.020	0.007	0.020	0.015	0.026	0.985
6/2/2012	12	0.026	0.012	0.021	0.004	0.026	0.015	0.023	0.985
6/2/2012	13	0.027	0.011	0.021	0.006	0.022	0.013	0.025	0.985
6/2/2012	14	0.022	0.010	0.021	0.008	0.028	0.012	0.024	0.985
6/2/2012	15	0.022	0.009	0.108	0.010	0.023	0.011	0.018	0.985
6/2/2012	16	0.017	0.009	0.016	0.011	0.025	0.009	0.018	0.985
6/2/2012	17	0.027	0.009	0.035	0.011	0.030	0.010	0.024	0.985
6/2/2012	18	0.037	0.010	0.030	0.009	0.028	0.015	0.033	0.985
6/2/2012	19	0.033	0.011	0.037	0.010	0.032	0.014	0.031	0.985
6/2/2012	20	0.043	0.013	0.041	0.014	0.049	0.014	0.041	0.985
6/2/2012	21	0.039	0.012	0.041	0.014	0.034	0.014	0.035	0.985
6/2/2012	22	0.031	0.011	0.030	0.022	0.032	0.012	0.030	0.985
6/2/2012	23	0.033	0.017	0.034	0.011	0.033	0.010	0.035	0.985



DESERT SUNLIGHT SOLAR FARM

TABLE 3 - HOURLY BAM DATA

(Please refer to Table 3 cover page for additional details.)

All values are in units of milligrams per cubic meter.

Date	Hour	North Station		East Station		South Station		West Station	
		PM10	PM2.5	PM10	PM2.5	PM10	PM2.5	PM10	PM2.5
6/3/2012	0	0.035	0.010	0.048	0.013	0.035	0.011	0.028	0.985
6/3/2012	1	0.033	0.010	0.031	0.016	0.032	0.017	0.024	0.985
6/3/2012	2	0.031	0.011	0.038	0.012	0.032	0.012	0.029	0.985
6/3/2012	3	0.034	0.012	0.033	0.010	0.041	0.012	0.026	0.985
6/3/2012	4	0.023	0.015	0.033	0.011	0.026	0.012	0.025	0.985
6/3/2012	5	0.032	0.012	0.029	0.011	0.028	0.016	0.029	0.985
6/3/2012	6	0.031	0.010	0.032	0.011	0.024	0.010	0.027	0.985
6/3/2012	7	0.032	0.008	0.031	0.009	0.030	0.020	0.027	0.985
6/3/2012	8	0.040	0.008	0.039	0.010	0.027	0.011	0.028	0.985
6/3/2012	9	0.033	0.009	0.033	0.012	0.031	0.012	0.034	0.985
6/3/2012	10	0.033	0.010	0.026	0.008	0.033	0.012	0.032	0.985
6/3/2012	11	0.033	0.012	0.033	0.045	0.031	0.017	0.032	0.985
6/3/2012	12	0.032	0.019	0.027	0.031	0.038	0.012	0.032	0.985
6/3/2012	13	0.030	0.008	0.027	0.029	0.036	0.011	0.027	0.985
6/3/2012	14	0.026	0.008	0.050	0.019	0.034	0.011	0.028	0.985
6/3/2012	15	0.022	0.007	0.026	0.007	0.039	0.985	0.025	0.985
6/3/2012	16	0.027	0.009	0.024	0.007	0.038	0.985	0.051	0.985
6/3/2012	17	0.025	0.009	0.018	0.007	0.018	0.013	0.018	0.985
6/3/2012	18	0.027	0.008	0.029	0.010	0.026	0.014	0.024	0.985
6/3/2012	19	0.034	0.010	0.036	0.013	0.032	0.014	0.030	0.985
6/3/2012	20	0.034	0.014	0.037	0.012	0.032	0.015	0.035	0.985
6/3/2012	21	0.026	0.014	0.028	0.012	0.026	0.014	0.028	0.985
6/3/2012	22	0.025	0.013	0.025	0.012	0.026	0.012	0.020	0.985
6/3/2012	23	0.027	0.014	0.024	0.013	0.027	0.011	0.030	0.985
6/4/2012	0	0.048	0.016	0.043	0.013	0.043	0.017	0.041	0.985
6/4/2012	1	0.031	0.009	0.035	0.012	0.031	0.010	0.037	0.985
6/4/2012	2	0.030	0.010	0.030	0.020	0.030	0.011	0.031	0.985
6/4/2012	3	0.031	0.016	0.032	0.033	0.034	0.013	0.030	0.985
6/4/2012	4	0.023	0.010	0.028	0.027	0.024	0.013	0.026	0.985
6/4/2012	5	0.025	0.010	0.028	0.015	0.027	0.015	0.027	0.985
6/4/2012	6	0.031	0.016	0.029	0.016	0.024	0.028	0.026	0.985
6/4/2012	7	0.027	0.011	0.022	0.014	0.021	0.023	0.027	0.985
6/4/2012	8	0.028	0.007	0.015	0.008	0.016	0.011	0.021	0.985
6/4/2012	9	0.020	0.004	0.015	0.005	0.016	0.009	0.985	0.985
6/4/2012	10	0.985	0.985	0.022	0.005	0.018	0.007	0.023	0.985
6/4/2012	11	0.021	0.007	0.020	0.003	0.016	0.021	0.017	0.985
6/4/2012	12	0.018	0.006	0.021	0.005	0.016	0.022	0.021	0.985
6/4/2012	13	0.019	0.006	0.018	0.039	0.016	0.018	0.015	0.985
6/4/2012	14	0.025	0.007	0.024	0.026	0.029	0.985	0.024	0.985
6/4/2012	15	0.023	0.007	0.025	0.006	0.020	0.985	0.021	0.985
6/4/2012	16	0.025	0.008	0.027	0.017	0.022	0.985	0.017	0.985
6/4/2012	17	0.023	0.007	0.020	0.008	0.021	0.016	0.019	0.985
6/4/2012	18	0.026	0.008	0.039	0.029	0.044	0.985	0.050	0.985
6/4/2012	19	0.026	0.008	0.038	0.012	0.039	0.985	0.023	0.985
6/4/2012	20	0.026	0.007	0.032	0.011	0.027	0.024	0.027	0.985
6/4/2012	21	0.035	0.008	0.036	0.011	0.036	0.011	0.034	0.985
6/4/2012	22	0.018	0.007	0.015	0.010	0.021	0.007	0.018	0.985
6/4/2012	23	0.015	0.006	0.015	0.009	0.014	0.005	0.006	0.985



DESERT SUNLIGHT SOLAR FARM

TABLE 3 - HOURLY BAM DATA

(Please refer to Table 3 cover page for additional details.)

All values are in units of milligrams per cubic meter.

Date	Hour	North Station		East Station		South Station		West Station	
		PM10	PM2.5	PM10	PM2.5	PM10	PM2.5	PM10	PM2.5
6/5/2012	0	0.012	0.007	0.013	0.006	0.016	0.007	0.009	0.985
6/5/2012	1	0.011	0.007	0.020	0.004	0.009	0.005	0.010	0.985
6/5/2012	2	0.037	0.007	0.034	0.008	0.026	0.006	0.041	0.985
6/5/2012	3	0.088	0.010	0.086	0.016	0.091	0.015	0.081	0.985
6/5/2012	4	0.061	0.013	0.077	0.027	0.069	0.014	0.060	0.985
6/5/2012	5	0.072	0.014	0.074	0.023	0.064	0.016	0.057	0.985
6/5/2012	6	0.052	0.012	0.063	0.021	0.079	0.015	0.060	0.985
6/5/2012	7	0.049	0.010	0.050	0.019	0.072	0.018	0.048	0.985
6/5/2012	8	0.041	0.009	0.038	0.020	0.047	0.008	0.036	0.985
6/5/2012	9	0.028	0.007	0.031	0.021	0.033	0.007	0.031	0.985
6/5/2012	10	0.037	0.007	0.035	0.017	0.040	0.008	0.027	0.985
6/5/2012	11	0.025	0.008	0.027	0.017	0.027	0.007	0.021	0.985
6/5/2012	12	0.025	0.007	0.025	0.012	0.036	0.005	0.025	0.985
6/5/2012	13	0.025	0.005	0.020	0.010	0.021	0.006	0.027	0.985
6/5/2012	14	0.026	0.006	0.023	0.006	0.024	0.007	0.024	0.985
6/5/2012	15	0.027	0.005	0.034	0.002	0.022	0.985	0.034	0.985
6/5/2012	16	0.018	0.004	0.021	0.001	0.026	0.985	0.022	0.985
6/5/2012	17	0.018	0.004	0.033	0.006	0.016	0.005	0.021	0.985
6/5/2012	18	0.016	0.006	0.018	0.006	0.016	0.003	0.022	0.985
6/5/2012	19	0.014	0.006	0.015	0.003	0.017	0.985	0.008	0.985
6/5/2012	20	0.018	0.003	0.023	0.006	0.019	0.008	0.012	0.985
6/5/2012	21	0.019	0.004	0.018	0.007	0.019	0.012	0.015	0.985
6/5/2012	22	0.053	0.008	0.049	0.009	0.054	0.013	0.043	0.985
6/5/2012	23	0.053	0.009	---	---	0.055	0.011	0.059	0.985
6/6/2012	0	0.092	0.018	---	---	0.094	0.025	0.089	0.985
6/6/2012	1	0.101	0.015	---	---	0.106	0.039	0.095	0.985
6/6/2012	2	0.062	0.011	---	---	0.065	0.013	0.060	0.985
6/6/2012	3	0.059	0.012	---	---	0.055	0.013	0.051	0.985
6/6/2012	4	---	---	---	---	0.046	0.010	0.043	0.985
6/6/2012	5	---	---	---	---	0.049	0.009	0.044	0.985
6/6/2012	6	---	---	---	---	0.057	0.009	0.035	0.985
6/6/2012	7	---	---	0.985	0.985	0.041	0.006	0.034	0.985
6/6/2012	8	0.985	0.985	0.018	-0.001	0.039	0.009	0.027	0.985
6/6/2012	9	0.016	0.002	0.021	0.000	0.058	0.011	0.028	0.985
6/6/2012	10	0.022	0.001	0.021	0.008	0.041	0.006	-0.015	0.985
6/6/2012	11	0.037	0.003	0.018	0.013	0.028	0.005	0.028	0.985
6/6/2012	12	0.035	0.004	0.011	0.006	0.025	0.004	0.028	0.985
6/6/2012	13	0.029	0.003	0.018	0.004	0.021	0.004	0.018	0.985
6/6/2012	14	0.016	0.004	0.018	0.004	0.019	0.007	0.017	0.985
6/6/2012	15	0.015	0.003	0.012	0.000	0.036	0.006	0.017	0.985
6/6/2012	16	0.016	0.003	0.017	0.001	0.016	0.003	0.019	0.985
6/6/2012	17	0.015	0.004	0.013	0.001	0.017	0.004	0.012	0.985
6/6/2012	18	0.020	0.004	0.016	0.002	0.013	0.021	0.015	0.985
6/6/2012	19	0.018	0.016	0.016	0.003	0.018	0.985	0.013	0.985
6/6/2012	20	0.027	0.010	0.021	0.004	0.013	0.019	0.021	0.985
6/6/2012	21	0.013	0.010	0.022	0.007	0.020	0.008	0.016	0.985
6/6/2012	22	0.018	0.019	0.023	0.009	0.024	0.006	0.017	0.985
6/6/2012	23	0.021	0.013	0.021	0.008	0.025	0.004	0.017	0.985



DESERT SUNLIGHT SOLAR FARM

TABLE 3 - HOURLY BAM DATA

(Please refer to Table 3 cover page for additional details.)

All values are in units of milligrams per cubic meter.

Date	Hour	North Station		East Station		South Station		West Station	
		PM10	PM2.5	PM10	PM2.5	PM10	PM2.5	PM10	PM2.5
6/7/2012	0	0.020	0.014	0.024	0.007	0.018	0.004	0.016	0.985
6/7/2012	1	0.018	0.010	0.033	0.007	0.024	0.005	0.022	0.985
6/7/2012	2	0.023	0.008	0.033	0.006	0.024	0.019	0.023	0.985
6/7/2012	3	0.036	0.009	0.036	0.009	0.036	0.020	0.032	0.985
6/7/2012	4	0.028	0.010	0.033	0.010	0.031	0.012	0.028	0.985
6/7/2012	5	0.028	0.010	0.027	0.009	0.028	0.011	0.026	0.985
6/7/2012	6	0.030	0.010	0.031	0.009	0.065	0.020	0.029	0.985
6/7/2012	7	0.024	0.009	0.025	0.009	0.029	0.009	0.027	0.985
6/7/2012	8	0.029	0.008	0.027	0.006	0.041	0.009	0.026	0.985
6/7/2012	9	0.025	0.008	0.027	0.003	0.033	0.010	0.019	0.985
6/7/2012	10	0.021	0.007	0.029	0.004	0.022	0.006	0.020	0.985
6/7/2012	11	0.023	0.010	0.012	0.003	0.016	0.007	0.014	0.985
6/7/2012	12	0.016	0.006	0.011	0.000	0.045	0.985	0.014	0.985
6/7/2012	13	0.016	0.000	0.010	0.002	0.040	0.985	0.015	0.985
6/7/2012	14	0.014	0.006	0.011	0.004	0.023	0.033	0.019	0.985
6/7/2012	15	0.014	0.008	0.018	0.002	0.013	0.011	0.011	0.985
6/7/2012	16	0.013	0.006	0.005	0.003	0.026	0.022	0.015	0.985
6/7/2012	17	0.013	0.005	0.007	0.004	0.013	0.013	0.012	0.985
6/7/2012	18	0.014	0.004	0.046	0.005	0.014	0.013	0.020	0.985
6/7/2012	19	0.022	0.006	0.018	0.005	0.034	0.012	0.018	0.985
6/7/2012	20	0.030	0.009	0.031	0.006	0.031	0.011	0.027	0.985
6/7/2012	21	0.027	0.008	0.030	0.007	0.027	0.012	0.030	0.985
6/7/2012	22	0.031	0.008	0.037	0.006	0.030	0.013	0.024	0.985
6/7/2012	23	0.024	0.008	0.027	0.010	0.028	0.014	0.023	0.985
6/8/2012	0	0.033	0.008	0.036	0.019	0.050	0.021	0.035	0.985
6/8/2012	1	0.053	0.024	0.046	0.023	0.040	0.018	0.042	0.985
6/8/2012	2	0.042	0.024	0.046	0.015	0.038	0.020	0.039	0.985
6/8/2012	3	0.022	0.006	0.045	0.015	0.030	0.012	0.012	0.985
6/8/2012	4	0.026	0.007	0.033	0.011	0.025	0.012	0.018	0.985
6/8/2012	5	0.031	0.011	0.036	0.009	0.031	0.013	0.027	0.985
6/8/2012	6	0.039	0.013	0.040	0.012	0.040	0.014	0.029	0.985
6/8/2012	7	0.028	0.010	0.030	0.011	0.044	0.012	0.033	0.985
6/8/2012	8	0.035	0.009	0.035	0.008	0.038	0.009	0.029	0.985
6/8/2012	9	0.029	0.010	0.985	0.985	0.035	0.011	0.029	0.985
6/8/2012	10	0.035	0.009	0.985	0.985	0.031	0.013	0.038	0.985
6/8/2012	11	0.035	0.009	0.029	0.024	0.036	0.013	0.035	0.985
6/8/2012	12	0.040	0.009	0.038	0.028	0.032	0.009	0.033	0.985
6/8/2012	13	0.026	0.010	0.020	0.021	0.274	0.007	0.041	0.985
6/8/2012	14	0.030	0.007	0.020	0.023	0.030	0.985	0.028	0.985
6/8/2012	15	0.032	0.008	0.024	0.019	0.027	0.985	0.029	0.985
6/8/2012	16	0.028	0.010	0.032	0.013	0.038	0.985	0.030	0.985
6/8/2012	17	0.031	0.008	0.028	0.013	0.026	0.985	0.031	0.985
6/8/2012	18	0.026	0.006	0.029	0.011	0.032	0.985	0.029	0.985
6/8/2012	19	0.038	0.017	0.038	0.016	0.038	0.985	0.033	0.985
6/8/2012	20	0.039	0.016	0.031	0.015	0.040	0.012	0.043	0.985
6/8/2012	21	0.048	0.016	0.047	0.016	0.049	0.020	0.046	0.985
6/8/2012	22	0.062	0.014	0.060	0.017	0.061	0.020	0.066	0.985
6/8/2012	23	0.069	0.014	0.061	0.018	0.059	0.013	0.064	0.985



DESERT SUNLIGHT SOLAR FARM

TABLE 3 - HOURLY BAM DATA

(Please refer to Table 3 cover page for additional details.)

All values are in units of milligrams per cubic meter.

Date	Hour	North Station		East Station		South Station		West Station	
		PM10	PM2.5	PM10	PM2.5	PM10	PM2.5	PM10	PM2.5
6/9/2012	0	0.056	0.014	0.057	0.010	0.048	0.019	0.053	0.985
6/9/2012	1	0.043	0.014	0.048	0.011	0.048	0.014	0.043	0.985
6/9/2012	2	0.037	0.014	0.039	0.019	0.044	0.014	0.038	0.985
6/9/2012	3	0.041	0.015	0.036	0.015	0.036	0.013	0.038	0.985
6/9/2012	4	0.035	0.015	0.034	0.016	0.038	0.013	0.035	0.985
6/9/2012	5	0.036	0.017	0.039	0.017	0.040	0.013	0.035	0.985
6/9/2012	6	0.033	0.014	0.045	0.015	0.042	0.018	0.033	0.985
6/9/2012	7	0.027	0.019	0.024	0.012	0.023	0.010	0.019	0.985
6/9/2012	8	0.021	0.010	0.019	0.008	0.022	0.009	0.028	0.985
6/9/2012	9	0.027	0.008	0.016	0.007	0.022	0.008	0.018	0.985
6/9/2012	10	0.026	0.008	0.018	0.005	0.027	0.007	0.024	0.985
6/9/2012	11	0.027	0.009	0.025	0.004	0.026	0.010	0.027	0.985
6/9/2012	12	0.036	0.009	0.059	0.009	0.036	0.012	0.038	0.985
6/9/2012	13	0.030	0.010	0.032	0.011	0.034	0.985	0.029	0.985
6/9/2012	14	0.025	0.011	0.024	0.006	0.022	0.985	0.031	0.985
6/9/2012	15	0.024	0.010	0.025	0.005	0.020	0.985	0.033	0.985
6/9/2012	16	0.021	0.006	0.044	0.006	0.094	0.011	0.024	0.985
6/9/2012	17	0.021	0.006	0.041	0.006	0.033	0.985	0.020	0.985
6/9/2012	18	0.026	0.008	0.030	0.007	0.028	0.985	0.029	0.985
6/9/2012	19	0.025	0.009	0.026	0.006	0.025	0.010	0.020	0.985
6/9/2012	20	0.024	0.010	0.017	0.007	0.021	0.008	0.023	0.985
6/9/2012	21	0.029	0.011	0.029	0.009	0.031	0.008	0.033	0.985
6/9/2012	22	0.033	0.016	0.038	0.009	0.033	0.008	0.031	0.985
6/9/2012	23	0.034	0.018	0.037	0.011	0.036	0.112	0.033	0.985
6/10/2012	0	0.037	0.014	0.044	0.011	0.034	0.012	0.035	0.985
6/10/2012	1	0.034	0.016	0.033	0.015	0.032	0.010	0.035	0.985
6/10/2012	2	0.035	0.015	0.033	0.012	0.034	0.016	0.034	0.985
6/10/2012	3	0.031	0.018	0.038	0.010	0.036	0.011	0.033	0.985
6/10/2012	4	0.026	0.011	0.031	0.010	0.048	0.010	0.032	0.985
6/10/2012	5	0.028	0.013	0.037	0.012	0.033	0.009	0.029	0.985
6/10/2012	6	0.034	0.012	0.034	0.011	0.035	0.015	0.032	0.985
6/10/2012	7	0.038	0.011	0.032	0.009	0.033	0.009	0.031	0.985
6/10/2012	8	0.033	0.011	0.041	0.007	0.038	0.009	0.040	0.985
6/10/2012	9	0.049	0.006	0.048	0.004	0.046	0.009	0.048	0.985
6/10/2012	10	0.041	0.005	0.035	0.003	0.042	0.985	0.038	0.985
6/10/2012	11	0.039	0.008	0.037	0.006	0.037	0.029	0.037	0.985
6/10/2012	12	0.036	0.010	0.030	0.010	0.033	0.005	0.032	0.985
6/10/2012	13	0.026	0.007	0.035	0.023	0.030	0.005	0.030	0.985
6/10/2012	14	0.029	0.007	0.020	0.014	0.028	0.985	0.028	0.985
6/10/2012	15	0.031	0.005	0.026	0.021	0.030	0.985	0.027	0.985
6/10/2012	16	0.030	0.001	0.027	0.006	0.027	0.985	0.028	0.985
6/10/2012	17	0.030	0.006	0.028	0.006	0.029	0.985	0.026	0.985
6/10/2012	18	0.022	0.007	0.032	0.007	0.026	0.985	0.026	0.985
6/10/2012	19	0.024	0.009	0.038	0.008	0.025	0.985	0.028	0.985
6/10/2012	20	0.024	0.007	0.023	0.032	0.027	0.985	0.023	0.985
6/10/2012	21	0.030	0.007	0.027	0.018	0.027	0.985	0.020	0.985
6/10/2012	22	0.025	0.009	0.037	0.011	0.034	0.029	0.025	0.985
6/10/2012	23	0.023	0.008	0.031	0.022	0.027	0.017	0.020	0.985



DESERT SUNLIGHT SOLAR FARM

TABLE 3 - HOURLY BAM DATA

(Please refer to Table 3 cover page for additional details.)

All values are in units of milligrams per cubic meter.

Date	Hour	North Station		East Station		South Station		West Station	
		PM10	PM2.5	PM10	PM2.5	PM10	PM2.5	PM10	PM2.5
6/11/2012	0	0.025	0.009	0.037	0.024	0.026	0.022	0.029	0.985
6/11/2012	1	0.030	0.009	0.037	0.010	0.033	0.018	0.030	0.985
6/11/2012	2	0.029	0.006	0.025	0.008	0.026	0.013	0.024	0.985
6/11/2012	3	0.025	0.004	0.024	0.009	0.025	0.016	0.027	0.985
6/11/2012	4	0.021	0.006	0.022	0.013	0.022	0.012	0.021	0.985
6/11/2012	5	0.017	0.006	0.033	0.008	0.024	0.011	0.018	0.985
6/11/2012	6	0.019	0.006	0.022	0.004	0.025	0.011	0.020	0.985
6/11/2012	7	0.022	0.005	0.017	0.005	0.032	0.009	0.021	0.985
6/11/2012	8	0.023	0.002	0.023	0.002	0.048	0.007	0.015	0.985
6/11/2012	9	0.022	0.002	0.018	0.003	0.029	0.010	0.017	0.985
6/11/2012	10	0.019	0.004	0.009	0.001	0.020	0.013	0.016	0.985
6/11/2012	11	0.009	0.003	0.009	-0.002	0.023	0.013	0.009	0.985
6/11/2012	12	0.985	0.985	0.010	-0.001	0.026	0.009	0.018	0.985
6/11/2012	13	0.017	0.007	0.010	0.001	0.031	0.985	0.013	0.985
6/11/2012	14	0.021	0.007	0.022	0.002	0.039	0.985	0.017	0.985
6/11/2012	15	0.021	0.006	0.017	0.002	0.033	0.985	0.020	0.985
6/11/2012	16	0.018	0.005	0.021	0.003	0.020	0.985	0.024	0.985
6/11/2012	17	0.019	0.007	0.020	0.003	0.015	0.985	0.985	0.985
6/11/2012	18	0.017	0.009	0.031	0.004	0.023	0.985	0.985	0.985
6/11/2012	19	0.025	0.010	0.017	0.006	0.016	0.985	0.985	0.985
6/11/2012	20	0.023	0.009	0.025	0.005	0.026	0.985	0.985	0.985
6/11/2012	21	0.027	0.009	0.027	0.004	0.025	0.009	0.985	0.985
6/11/2012	22	0.031	0.009	0.040	0.007	0.038	0.011	0.985	0.985
6/11/2012	23	0.026	0.009	0.030	0.011	0.027	0.013	0.985	0.985
6/12/2012	0	0.024	0.010	0.018	0.008	0.024	0.011	0.985	0.985
6/12/2012	1	0.032	0.011	0.036	0.008	0.039	0.011	0.985	0.985
6/12/2012	2	0.024	0.009	0.031	0.009	0.026	0.010	0.985	0.985
6/12/2012	3	0.021	0.008	0.033	0.010	0.028	0.009	0.985	0.985
6/12/2012	4	0.026	0.007	0.024	0.013	0.025	0.009	0.985	0.985
6/12/2012	5	0.028	0.010	0.038	0.011	0.033	0.011	0.985	0.985
6/12/2012	6	0.028	0.010	0.030	0.009	0.043	0.013	0.985	0.985
6/12/2012	7	0.034	0.007	0.028	0.009	0.053	0.011	0.985	0.985
6/12/2012	8	0.034	0.006	0.030	0.008	0.074	0.015	0.985	0.985
6/12/2012	9	0.031	0.007	0.036	0.007	0.040	0.012	0.985	0.985
6/12/2012	10	0.031	0.009	0.023	0.005	0.054	0.019	0.985	0.985
6/12/2012	11	0.022	0.010	0.019	0.002	0.045	0.028	0.985	0.985
6/12/2012	12	0.018	0.010	0.020	0.004	0.083	0.029	0.985	0.985
6/12/2012	13	0.018	0.007	0.017	0.006	0.065	0.014	0.985	0.985
6/12/2012	14	0.020	0.007	0.019	0.005	0.116	0.985	0.985	0.985
6/12/2012	15	0.018	0.006	0.021	0.006	0.089	0.985	0.985	0.985
6/12/2012	16	0.019	0.005	0.019	0.006	0.022	0.985	0.985	0.985
6/12/2012	17	0.017	0.005	0.014	0.004	0.013	0.985	0.985	0.985
6/12/2012	18	0.016	0.006	0.020	0.004	0.022	0.985	0.985	0.985
6/12/2012	19	0.021	0.011	0.016	0.006	0.016	0.985	0.985	0.985
6/12/2012	20	0.022	0.010	0.027	0.008	0.019	0.985	0.985	0.985
6/12/2012	21	0.027	0.006	0.026	0.008	0.021	0.985	0.985	0.985
6/12/2012	22	0.020	0.010	0.021	0.006	0.022	0.028	0.985	0.985
6/12/2012	23	0.019	0.011	0.025	0.008	0.025	0.016	0.985	0.985



DESERT SUNLIGHT SOLAR FARM

TABLE 3 - HOURLY BAM DATA

(Please refer to Table 3 cover page for additional details.)

All values are in units of milligrams per cubic meter.

Date	Hour	North Station		East Station		South Station		West Station	
		PM10	PM2.5	PM10	PM2.5	PM10	PM2.5	PM10	PM2.5
6/13/2012	0	0.019	0.011	0.029	0.011	0.031	0.021	0.985	0.985
6/13/2012	1	0.029	0.009	0.032	0.013	0.045	0.015	0.985	0.985
6/13/2012	2	0.032	0.010	0.035	0.016	0.049	0.985	0.985	0.985
6/13/2012	3	0.028	0.011	0.028	0.010	0.028	0.985	0.985	0.985
6/13/2012	4	0.015	0.008	0.031	0.012	0.020	0.985	0.985	0.985
6/13/2012	5	0.017	0.006	0.023	0.010	0.021	0.019	0.985	0.985
6/13/2012	6	0.014	0.005	0.021	0.003	0.028	0.010	0.985	0.985
6/13/2012	7	0.014	0.001	0.016	0.001	0.028	0.009	0.985	0.985
6/13/2012	8	0.022	0.001	0.017	0.003	0.031	0.985	0.985	0.985
6/13/2012	9	0.027	0.006	0.024	0.002	0.028	0.985	0.985	0.985
6/13/2012	10	0.025	0.007	0.025	0.003	0.030	0.985	0.985	0.985
6/13/2012	11	0.018	0.008	0.013	0.002	0.025	0.985	0.985	0.985
6/13/2012	12	0.014	0.005	0.015	0.002	0.048	0.985	0.985	0.985
6/13/2012	13	0.016	0.005	0.985	0.985	0.036	0.985	0.985	0.985
6/13/2012	14	0.014	0.007	0.023	0.000	0.019	0.985	0.985	0.985
6/13/2012	15	0.021	0.006	0.026	0.002	0.032	0.985	0.985	0.985
6/13/2012	16	0.011	0.005	0.011	0.001	0.022	0.985	0.985	0.985
6/13/2012	17	0.009	0.004	0.011	0.003	0.011	0.985	0.985	0.985
6/13/2012	18	0.009	0.006	0.012	0.005	0.017	0.985	0.985	0.985
6/13/2012	19	0.012	0.006	0.017	0.004	0.018	0.985	0.985	0.985
6/13/2012	20	0.024	0.007	0.021	0.006	0.019	0.985	0.985	0.985
6/13/2012	21	0.029	0.011	0.027	0.007	0.028	0.985	0.985	0.985
6/13/2012	22	0.018	0.011	0.024	0.008	0.022	0.985	0.985	0.985
6/13/2012	23	0.022	0.007	0.026	0.009	0.023	0.985	0.985	0.985
6/14/2012	0	0.023	0.008	0.033	0.009	0.037	0.985	0.985	0.985
6/14/2012	1	0.029	0.010	0.029	0.010	0.029	0.985	0.985	0.985
6/14/2012	2	0.033	0.010	0.023	0.010	0.026	0.010	0.985	0.985
6/14/2012	3	0.029	0.010	0.029	0.011	0.027	0.011	0.985	0.985
6/14/2012	4	0.026	0.012	0.039	0.012	0.026	0.012	0.985	0.985
6/14/2012	5	0.028	0.012	0.035	0.009	0.031	0.013	0.985	0.985
6/14/2012	6	0.023	0.010	0.039	0.009	0.047	0.012	0.985	0.985
6/14/2012	7	0.031	0.009	0.025	0.008	0.046	0.011	0.985	0.985
6/14/2012	8	0.015	0.010	0.027	0.005	0.027	0.985	0.985	0.985
6/14/2012	9	0.025	0.007	0.023	0.006	0.038	0.011	0.985	0.985
6/14/2012	10	0.021	0.004	0.017	0.004	0.055	0.020	0.985	0.985
6/14/2012	11	0.019	0.006	0.012	0.003	0.066	0.013	0.023	0.985
6/14/2012	12	0.015	0.005	0.012	0.003	0.050	0.985	0.014	0.985
6/14/2012	13	0.010	0.005	0.068	0.003	0.046	0.985	0.021	0.985
6/14/2012	14	0.012	0.004	0.023	0.002	0.036	0.985	0.010	0.985
6/14/2012	15	0.013	0.004	0.008	0.002	0.031	0.985	0.033	0.985
6/14/2012	16	0.024	0.006	0.035	0.005	0.023	0.985	0.022	0.612
6/14/2012	17	0.015	0.006	0.029	0.008	0.025	0.985	0.018	0.009
6/14/2012	18	0.035	0.009	0.024	0.009	0.023	0.985	0.024	0.007
6/14/2012	19	0.030	0.010	0.037	0.010	0.035	0.985	0.032	0.004
6/14/2012	20	0.045	0.017	0.055	0.015	0.056	0.985	0.048	0.009
6/14/2012	21	0.062	0.018	0.071	0.017	0.060	0.985	0.058	0.014
6/14/2012	22	0.079	0.025	0.076	0.025	0.077	0.039	0.076	0.022
6/14/2012	23	0.076	0.028	0.081	0.028	0.072	0.042	0.077	0.025



DESERT SUNLIGHT SOLAR FARM

TABLE 3 - HOURLY BAM DATA

(Please refer to Table 3 cover page for additional details.)

All values are in units of milligrams per cubic meter.

Date	Hour	North Station		East Station		South Station		West Station	
		PM10	PM2.5	PM10	PM2.5	PM10	PM2.5	PM10	PM2.5
6/15/2012	0	0.057	0.020	0.070	0.019	0.068	0.029	0.069	0.021
6/15/2012	1	0.049	0.019	0.066	0.016	0.054	0.030	0.052	0.013
6/15/2012	2	0.063	0.020	0.050	0.017	0.049	0.024	0.066	0.021
6/15/2012	3	0.047	0.019	0.056	0.019	0.068	0.029	0.047	0.015
6/15/2012	4	0.053	0.020	0.036	0.016	0.037	0.985	0.051	0.018
6/15/2012	5	0.035	0.018	0.033	0.015	0.032	0.985	0.052	0.015
6/15/2012	6	0.037	0.016	0.036	0.016	0.025	0.020	0.048	0.018
6/15/2012	7	---	---	0.036	0.013	0.021	0.013	0.028	0.008
6/15/2012	8	---	---	0.018	0.012	0.020	0.009	0.012	0.008
6/15/2012	9	0.985	0.985	0.024	0.007	0.014	0.004	0.022	0.006
6/15/2012	10	0.005	-0.009	0.012	0.007	0.018	0.002	0.007	0.006
6/15/2012	11	0.003	-0.008	0.009	0.036	0.018	0.003	0.006	0.005
6/15/2012	12	0.005	-0.004	0.985	0.985	0.022	0.005	0.006	0.004
6/15/2012	13	0.007	0.001	0.007	0.056	0.012	0.007	0.007	0.006
6/15/2012	14	0.003	0.002	0.008	0.039	0.013	0.008	0.006	0.006
6/15/2012	15	0.005	0.003	0.005	0.024	0.011	0.006	0.005	0.001
6/15/2012	16	0.015	0.003	0.001	0.015	0.008	0.004	0.009	-0.001
6/15/2012	17	0.013	0.002	0.003	0.005	0.008	0.005	0.012	0.001
6/15/2012	18	0.008	0.002	0.010	0.022	0.009	0.006	0.009	-0.002
6/15/2012	19	0.007	0.002	0.012	0.020	0.009	0.007	0.008	0.000
6/15/2012	20	0.011	0.006	0.035	0.017	0.017	0.006	0.011	0.001
6/15/2012	21	0.041	0.010	0.053	0.030	0.052	0.020	0.039	0.006
6/15/2012	22	0.049	0.023	0.071	0.037	0.063	0.025	0.045	0.016
6/15/2012	23	0.055	0.021	0.062	0.036	0.064	0.023	0.052	0.017
6/16/2012	0	0.053	0.024	0.060	0.034	0.056	0.021	0.049	0.017
6/16/2012	1	0.048	0.017	0.059	0.033	0.059	0.019	0.053	0.018
6/16/2012	2	0.049	0.016	0.054	0.016	0.053	0.022	0.036	0.009
6/16/2012	3	0.047	0.020	0.049	0.017	0.043	0.016	0.044	0.017
6/16/2012	4	0.038	0.017	0.052	0.010	0.041	0.014	0.033	0.015
6/16/2012	5	0.023	0.006	0.029	0.009	0.035	0.015	0.026	0.012
6/16/2012	6	0.024	0.007	0.031	0.008	0.034	0.011	0.023	0.009
6/16/2012	7	0.026	0.010	0.030	0.024	0.024	0.010	0.027	0.009
6/16/2012	8	0.029	0.012	0.027	0.016	0.034	0.010	0.027	0.007
6/16/2012	9	0.023	0.008	0.010	0.005	0.014	0.007	0.029	0.007
6/16/2012	10	0.012	0.006	0.012	0.003	0.014	0.006	0.008	0.006
6/16/2012	11	0.011	0.007	0.013	0.001	0.010	0.008	0.006	0.002
6/16/2012	12	0.011	0.005	0.008	0.002	0.007	0.006	0.006	0.002
6/16/2012	13	0.011	0.005	0.023	0.000	0.011	0.004	0.008	0.003
6/16/2012	14	0.012	0.004	0.010	0.000	0.009	0.003	0.006	0.002
6/16/2012	15	0.010	0.001	0.010	0.001	0.004	0.005	0.006	0.002
6/16/2012	16	0.009	0.001	0.006	0.002	0.006	0.006	0.008	0.002
6/16/2012	17	0.007	0.002	0.003	0.002	0.006	0.004	0.005	0.000
6/16/2012	18	0.005	0.004	0.009	0.000	0.009	0.004	0.004	0.000
6/16/2012	19	0.005	0.005	0.009	0.000	0.011	0.004	0.004	0.001
6/16/2012	20	0.006	0.005	0.005	0.003	0.009	0.005	0.002	0.004
6/16/2012	21	0.011	0.006	0.017	0.006	0.015	0.007	0.016	0.002
6/16/2012	22	0.011	0.006	0.010	0.005	0.010	0.007	0.009	0.001
6/16/2012	23	0.011	0.006	0.012	0.005	0.012	0.006	0.006	0.004



DESERT SUNLIGHT SOLAR FARM

TABLE 3 - HOURLY BAM DATA

(Please refer to Table 3 cover page for additional details.)

All values are in units of milligrams per cubic meter.

Date	Hour	North Station		East Station		South Station		West Station	
		PM10	PM2.5	PM10	PM2.5	PM10	PM2.5	PM10	PM2.5
6/17/2012	0	0.016	0.008	0.024	0.005	0.016	0.006	0.008	0.004
6/17/2012	1	0.012	0.007	0.015	0.006	0.009	0.004	0.012	0.005
6/17/2012	2	0.011	0.007	0.023	0.007	0.009	0.005	0.010	0.003
6/17/2012	3	0.011	0.006	0.012	0.006	0.009	0.006	0.008	0.002
6/17/2012	4	0.009	0.003	0.013	0.004	0.009	0.004	0.010	0.003
6/17/2012	5	0.010	0.004	0.014	0.004	0.009	0.006	0.010	0.003
6/17/2012	6	0.012	0.004	0.012	0.002	0.010	0.007	0.017	0.003
6/17/2012	7	0.010	0.002	0.008	0.001	0.011	0.006	0.008	0.003
6/17/2012	8	0.010	0.000	0.008	0.000	0.012	0.005	0.009	0.004
6/17/2012	9	0.011	0.002	0.005	0.000	0.012	0.003	0.009	0.002
6/17/2012	10	0.012	0.002	0.001	-0.001	0.007	0.004	0.010	0.001
6/17/2012	11	0.010	0.001	0.028	0.000	0.005	0.006	0.010	0.001
6/17/2012	12	0.008	0.002	0.010	0.001	0.018	0.006	0.021	0.003
6/17/2012	13	0.020	0.002	0.019	0.000	0.022	0.006	0.018	0.007
6/17/2012	14	0.018	0.004	0.022	0.002	0.020	0.004	0.019	0.007
6/17/2012	15	0.017	0.004	0.021	0.002	0.015	0.006	0.020	0.003
6/17/2012	16	0.012	0.003	0.019	0.003	0.015	0.009	0.014	0.004
6/17/2012	17	0.019	0.006	0.013	0.004	0.023	0.008	0.024	0.007
6/17/2012	18	0.011	0.009	0.018	0.003	0.018	0.985	0.014	0.007
6/17/2012	19	0.013	0.006	0.010	0.005	0.009	0.985	0.010	0.002
6/17/2012	20	0.011	0.005	0.010	0.005	0.010	0.010	0.009	0.001
6/17/2012	21	0.009	0.004	0.010	0.006	0.015	0.985	0.012	0.005
6/17/2012	22	0.016	0.004	0.011	0.006	0.014	0.010	0.012	0.002
6/17/2012	23	0.012	0.007	0.019	0.003	0.013	0.005	0.017	0.002
6/18/2012	0	0.017	0.008	0.021	0.004	0.015	0.006	0.009	0.006
6/18/2012	1	0.020	0.009	0.021	0.006	0.017	0.009	0.009	0.008
6/18/2012	2	0.019	0.009	0.022	0.007	0.014	0.010	0.015	0.006
6/18/2012	3	0.015	0.010	0.017	0.007	0.017	0.010	0.013	0.004
6/18/2012	4	0.016	0.011	0.019	0.007	0.014	0.008	0.016	0.007
6/18/2012	5	0.014	0.011	0.017	0.007	0.017	0.007	0.015	0.007
6/18/2012	6	0.013	0.009	0.019	0.007	0.032	0.011	0.016	0.006
6/18/2012	7	0.015	0.007	0.015	0.006	0.078	0.012	0.012	0.009
6/18/2012	8	0.013	0.006	0.013	0.004	0.016	0.009	0.012	0.006
6/18/2012	9	0.012	0.003	0.010	0.004	0.014	0.008	0.012	0.003
6/18/2012	10	0.008	0.004	0.007	0.004	0.012	0.006	0.011	0.002
6/18/2012	11	0.004	0.003	0.007	0.003	0.009	0.006	0.008	0.000
6/18/2012	12	0.005	0.003	0.006	0.002	0.021	0.985	0.375	0.258
6/18/2012	13	0.029	0.004	0.130	0.009	0.154	0.985	0.032	0.005
6/18/2012	14	0.030	0.006	0.049	0.011	0.121	0.985	0.036	0.007
6/18/2012	15	0.027	0.008	0.111	0.015	0.123	0.985	0.020	0.008
6/18/2012	16	0.038	0.008	0.106	0.019	0.133	0.985	0.065	0.004
6/18/2012	17	0.042	0.008	0.078	0.005	0.118	0.985	0.027	0.006
6/18/2012	18	0.026	0.007	0.038	0.005	0.358	0.985	0.028	0.009
6/18/2012	19	0.025	0.005	0.031	0.002	0.033	0.985	0.024	0.007
6/18/2012	20	0.017	0.005	0.025	0.002	0.025	0.985	0.018	0.007
6/18/2012	21	0.019	0.006	0.020	0.006	0.014	0.009	0.016	0.004
6/18/2012	22	0.011	0.004	0.011	0.005	0.012	0.009	0.011	0.000
6/18/2012	23	0.012	0.003	0.010	0.003	0.009	0.005	0.010	0.000



DESERT SUNLIGHT SOLAR FARM

TABLE 3 - HOURLY BAM DATA

(Please refer to Table 3 cover page for additional details.)

All values are in units of milligrams per cubic meter.

Date	Hour	North Station		East Station		South Station		West Station	
		PM10	PM2.5	PM10	PM2.5	PM10	PM2.5	PM10	PM2.5
6/19/2012	0	0.013	0.002	0.007	0.003	0.007	0.005	0.008	0.001
6/19/2012	1	0.012	0.002	0.018	0.000	0.008	0.005	0.017	0.001
6/19/2012	2	0.015	0.003	0.017	0.000	0.010	0.004	0.008	-0.001
6/19/2012	3	0.008	0.005	0.011	0.001	0.008	0.006	0.009	0.000
6/19/2012	4	0.010	0.005	0.011	0.001	0.007	0.005	0.009	0.002
6/19/2012	5	0.026	0.003	0.036	0.003	0.017	0.003	0.021	0.003
6/19/2012	6	0.093	0.019	0.076	0.016	0.123	0.017	0.044	0.007
6/19/2012	7	0.083	0.016	0.092	0.015	0.071	0.015	0.069	0.013
6/19/2012	8	0.071	0.015	0.084	0.015	0.101	0.021	0.067	0.014
6/19/2012	9	0.065	0.012	0.065	0.008	0.985	0.017	0.058	0.013
6/19/2012	10	0.042	0.010	0.049	0.007	0.057	0.985	0.038	0.008
6/19/2012	11	0.048	0.007	0.033	0.003	0.074	0.985	0.037	0.004
6/19/2012	12	0.985	0.006	0.029	0.001	0.042	0.985	0.030	0.008
6/19/2012	13	0.020	0.005	0.024	0.001	0.018	0.985	0.020	0.006
6/19/2012	14	0.018	0.003	0.014	-0.001	0.061	0.985	0.024	0.004
6/19/2012	15	0.033	0.005	0.042	0.003	0.102	0.985	0.031	0.008
6/19/2012	16	0.027	0.006	0.205	0.016	0.086	0.985	0.031	0.008
6/19/2012	17	0.024	0.004	0.038	0.003	0.028	0.985	0.019	0.006
6/19/2012	18	0.021	0.001	0.318	0.023	0.036	0.985	0.014	0.002
6/19/2012	19	0.011	0.002	0.316	0.027	0.100	0.985	0.011	0.001
6/19/2012	20	0.018	0.002	0.072	0.010	0.037	0.985	0.009	0.002
6/19/2012	21	0.017	0.002	0.013	0.008	0.014	0.985	0.018	0.006
6/19/2012	22	0.010	0.004	0.014	0.006	0.014	0.985	0.013	0.004
6/19/2012	23	0.033	0.006	0.034	0.009	0.027	0.985	0.025	0.003
6/20/2012	0	0.038	0.009	0.041	0.013	0.033	0.985	0.036	0.015
6/20/2012	1	0.032	0.009	0.034	0.010	0.032	0.985	0.033	0.011
6/20/2012	2	0.027	0.007	0.031	0.009	0.027	0.985	0.025	0.010
6/20/2012	3	0.028	0.007	0.029	0.010	0.017	0.985	0.020	0.008
6/20/2012	4	0.020	0.011	0.020	0.006	0.033	0.985	0.017	0.010
6/20/2012	5	0.023	0.009	0.025	0.006	0.025	0.985	0.026	0.011
6/20/2012	6	---	---	0.023	0.006	0.035	0.985	0.021	0.008
6/20/2012	7	---	---	0.019	0.006	0.041	0.985	0.015	0.007
6/20/2012	8	---	---	0.027	0.006	0.027	0.985	0.027	0.020
6/20/2012	9	0.985	0.985	0.005	0.005	0.078	0.985	0.017	0.005
6/20/2012	10	0.007	-0.002	0.021	0.004	0.019	0.985	0.017	0.004
6/20/2012	11	0.011	-0.003	0.016	0.003	0.017	0.985	0.026	0.005
6/20/2012	12	0.012	-0.003	0.009	0.067	0.026	0.985	0.018	0.007
6/20/2012	13	0.011	-0.002	0.008	0.053	0.017	0.985	0.017	0.008
6/20/2012	14	0.014	0.000	0.011	0.041	0.041	0.985	0.021	0.006
6/20/2012	15	0.018	0.004	0.019	0.033	0.035	0.985	0.015	0.004
6/20/2012	16	0.020	0.005	0.017	0.006	0.023	0.985	0.015	0.006
6/20/2012	17	0.016	0.004	0.017	0.021	0.014	0.985	0.015	0.009
6/20/2012	18	0.016	0.006	0.015	0.030	0.019	0.985	0.022	0.008
6/20/2012	19	0.014	0.006	0.016	0.019	0.013	0.985	0.023	0.004
6/20/2012	20	0.028	0.006	0.030	0.019	0.028	0.985	0.029	0.017
6/20/2012	21	0.021	0.007	0.026	0.007	0.019	0.985	0.021	0.009
6/20/2012	22	0.027	0.007	0.028	0.023	0.021	0.985	0.022	0.010
6/20/2012	23	0.021	0.008	0.023	0.005	0.024	0.985	0.023	0.019



DESERT SUNLIGHT SOLAR FARM

TABLE 3 - HOURLY BAM DATA

(Please refer to Table 3 cover page for additional details.)

All values are in units of milligrams per cubic meter.

Date	Hour	North Station		East Station		South Station		West Station	
		PM10	PM2.5	PM10	PM2.5	PM10	PM2.5	PM10	PM2.5
6/21/2012	0	0.026	0.006	0.046	0.056	0.041	0.985	0.023	0.006
6/21/2012	1	0.033	0.008	0.040	0.018	0.038	0.985	0.028	0.008
6/21/2012	2	0.030	0.011	0.044	0.016	0.035	0.985	0.022	0.017
6/21/2012	3	0.024	0.010	0.049	0.038	0.048	0.985	0.028	0.010
6/21/2012	4	0.031	0.011	0.051	0.036	0.038	0.985	0.030	0.010
6/21/2012	5	0.031	0.010	0.048	0.026	0.035	0.985	0.038	0.011
6/21/2012	6	0.031	0.010	0.056	0.015	0.092	0.985	0.031	0.014
6/21/2012	7	0.036	0.012	0.045	0.027	0.057	0.017	0.058	0.017
6/21/2012	8	0.031	0.012	0.029	0.025	0.057	0.985	0.029	0.010
6/21/2012	9	0.028	0.009	0.024	0.016	0.051	0.013	0.036	0.009
6/21/2012	10	0.023	0.010	0.022	0.005	0.041	0.985	0.038	0.007
6/21/2012	11	0.027	0.011	0.041	0.006	0.062	0.985	0.037	0.008
6/21/2012	12	0.030	0.011	0.047	0.985	0.048	0.070	0.031	0.007
6/21/2012	13	0.024	0.009	0.985	0.985	0.058	0.007	0.023	0.007
6/21/2012	14	0.023	0.007	0.019	0.006	0.050	0.007	0.022	0.007
6/21/2012	15	0.012	0.985	0.012	0.005	0.045	0.065	0.013	0.004
6/21/2012	16	0.985	0.985	0.013	0.005	0.026	0.026	0.014	0.985
6/21/2012	17	0.024	0.044	0.014	0.007	0.050	0.068	0.012	-0.001
6/21/2012	18	0.026	0.005	0.016	0.009	0.026	0.016	0.016	0.002
6/21/2012	19	0.028	0.017	0.023	0.010	0.029	0.018	0.029	0.006
6/21/2012	20	0.009	0.012	0.028	0.011	0.031	0.017	0.028	0.003
6/21/2012	21	0.044	0.015	0.049	0.015	0.042	0.015	0.046	0.001
6/21/2012	22	0.052	0.021	0.046	0.021	0.048	0.019	0.048	0.001
6/21/2012	23	0.071	0.043	0.061	0.020	0.066	0.019	0.074	0.003
6/22/2012	0	0.048	0.046	0.087	0.022	0.070	0.015	0.062	0.005
6/22/2012	1	0.069	0.072	0.092	0.024	0.056	0.029	0.071	0.005
6/22/2012	2	0.035	0.044	0.098	0.021	0.078	0.019	0.047	0.005
6/22/2012	3	0.018	0.014	0.023	0.010	0.022	0.010	0.029	0.004
6/22/2012	4	0.022	0.011	0.027	0.010	0.016	0.009	0.026	0.002
6/22/2012	5	0.030	0.009	0.030	0.010	0.024	0.008	0.021	0.004
6/22/2012	6	0.031	0.009	0.037	0.008	0.035	0.011	0.032	0.006
6/22/2012	7	0.029	0.008	0.028	0.005	0.028	0.010	0.021	0.004
6/22/2012	8	0.033	0.006	0.026	0.005	0.049	0.006	0.027	0.003
6/22/2012	9	0.037	0.006	0.038	0.003	0.042	0.006	0.034	0.003
6/22/2012	10	0.035	0.008	0.031	0.003	0.033	0.007	0.036	0.002
6/22/2012	11	0.054	0.012	0.020	0.003	0.022	0.008	0.028	0.000
6/22/2012	12	0.015	0.017	0.012	0.001	0.015	0.007	0.019	0.004
6/22/2012	13	0.014	0.009	0.013	0.002	0.014	0.009	0.018	0.006
6/22/2012	14	0.016	0.007	0.016	0.004	0.025	0.009	0.016	0.002
6/22/2012	15	0.017	0.035	0.014	0.004	0.013	0.008	0.014	0.002
6/22/2012	16	0.014	0.010	0.012	0.002	0.012	0.006	0.016	0.003
6/22/2012	17	0.050	0.008	0.008	0.001	0.011	0.004	0.020	0.000
6/22/2012	18	0.012	0.005	0.007	0.002	0.012	0.006	0.016	-0.001
6/22/2012	19	0.016	0.023	0.016	0.003	0.017	0.004	0.012	-0.001
6/22/2012	20	0.015	0.022	0.014	0.001	0.010	0.003	0.013	0.000
6/22/2012	21	0.985	0.019	0.015	0.002	0.016	0.006	0.014	0.001
6/22/2012	22	0.985	0.026	0.021	0.006	0.021	0.008	0.021	0.001
6/22/2012	23	0.985	0.009	0.022	0.006	0.019	0.007	0.013	0.003



DESERT SUNLIGHT SOLAR FARM

TABLE 3 - HOURLY BAM DATA

(Please refer to Table 3 cover page for additional details.)

All values are in units of milligrams per cubic meter.

Date	Hour	North Station		East Station		South Station		West Station	
		PM10	PM2.5	PM10	PM2.5	PM10	PM2.5	PM10	PM2.5
6/23/2012	0	0.985	0.008	0.028	0.008	0.022	0.006	0.019	0.005
6/23/2012	1	0.985	0.016	0.030	0.012	0.017	0.007	0.025	0.005
6/23/2012	2	0.985	0.015	0.028	0.010	0.019	0.008	0.020	0.004
6/23/2012	3	0.985	0.005	0.029	0.009	0.026	0.009	0.017	0.002
6/23/2012	4	0.985	0.022	0.027	0.009	0.022	0.012	0.022	0.003
6/23/2012	5	0.985	0.017	0.026	0.011	0.022	0.012	0.020	0.006
6/23/2012	6	0.985	0.010	0.033	0.012	0.026	0.012	0.022	0.005
6/23/2012	7	0.985	0.010	0.028	0.010	0.027	0.011	0.026	0.004
6/23/2012	8	0.985	0.023	0.025	0.008	0.030	0.008	0.021	0.001
6/23/2012	9	0.985	0.026	0.025	0.010	0.024	0.005	0.036	0.001
6/23/2012	10	0.985	0.013	0.017	0.009	0.021	0.007	0.020	0.002
6/23/2012	11	0.985	0.012	0.017	0.004	0.020	0.009	0.019	0.002
6/23/2012	12	0.985	0.010	0.021	0.000	0.019	0.006	0.020	0.001
6/23/2012	13	0.985	0.009	0.016	0.003	0.016	0.006	0.018	0.001
6/23/2012	14	0.985	0.008	0.017	0.004	0.016	0.007	0.015	0.004
6/23/2012	15	0.985	0.007	0.014	0.002	0.015	0.007	0.014	0.003
6/23/2012	16	0.985	0.006	0.011	0.002	0.005	0.007	0.011	0.001
6/23/2012	17	0.985	0.006	0.009	0.002	0.005	0.008	0.007	0.002
6/23/2012	18	0.985	0.005	0.009	0.005	0.007	0.006	0.011	0.003
6/23/2012	19	0.985	0.004	0.017	0.008	0.016	0.004	0.011	0.003
6/23/2012	20	0.985	0.006	0.014	0.008	0.016	0.004	0.023	0.002
6/23/2012	21	0.985	0.010	0.024	0.007	0.025	0.008	0.030	0.001
6/23/2012	22	0.985	0.014	0.031	0.016	0.039	0.016	0.031	0.003
6/23/2012	23	0.985	0.015	0.040	0.013	0.031	0.011	0.028	0.005
6/24/2012	0	0.985	0.005	0.053	0.011	0.025	0.010	0.019	0.004
6/24/2012	1	0.985	0.008	0.023	0.008	0.020	0.008	0.021	0.004
6/24/2012	2	0.985	0.012	0.024	0.007	0.024	0.007	0.026	0.004
6/24/2012	3	0.985	0.017	0.030	0.009	0.025	0.009	0.024	0.002
6/24/2012	4	0.985	0.009	0.020	0.009	0.020	0.009	0.020	0.002
6/24/2012	5	0.985	0.010	0.029	0.009	0.021	0.007	0.026	0.002
6/24/2012	6	0.985	0.011	0.027	0.007	0.023	0.006	0.015	0.001
6/24/2012	7	0.985	0.007	0.020	0.004	0.018	0.005	0.013	0.002
6/24/2012	8	0.985	0.007	0.021	0.005	0.017	0.006	0.017	0.000
6/24/2012	9	0.985	0.011	0.017	0.006	0.019	0.007	0.013	-0.002
6/24/2012	10	0.985	0.010	0.014	0.003	0.010	0.009	0.015	0.001
6/24/2012	11	0.985	0.007	0.013	0.001	0.011	0.007	0.024	0.000
6/24/2012	12	0.985	0.020	0.032	0.004	0.010	0.003	0.008	-0.001
6/24/2012	13	0.985	0.008	0.015	0.006	0.010	0.005	0.020	0.000
6/24/2012	14	0.985	0.007	0.012	0.001	0.012	0.005	0.012	0.003
6/24/2012	15	0.985	0.006	0.041	0.020	0.011	0.002	0.012	0.004
6/24/2012	16	0.985	0.005	0.013	0.014	0.013	0.005	0.016	0.000
6/24/2012	17	0.985	0.005	0.012	0.011	0.014	0.004	0.016	0.001
6/24/2012	18	0.985	0.006	0.010	0.004	0.013	0.004	0.014	0.002
6/24/2012	19	0.985	0.003	0.007	0.002	0.010	0.004	0.010	0.003
6/24/2012	20	0.985	0.003	0.008	0.006	0.008	0.003	0.005	0.003
6/24/2012	21	0.985	0.006	0.011	0.005	0.009	0.004	0.008	0.001
6/24/2012	22	0.985	0.006	0.017	0.006	0.017	0.006	0.011	0.003
6/24/2012	23	0.985	0.007	0.023	0.006	0.012	0.006	0.015	0.005



DESERT SUNLIGHT SOLAR FARM

TABLE 3 - HOURLY BAM DATA

(Please refer to Table 3 cover page for additional details.)

All values are in units of milligrams per cubic meter.

Date	Hour	North Station		East Station		South Station		West Station	
		PM10	PM2.5	PM10	PM2.5	PM10	PM2.5	PM10	PM2.5
6/25/2012	0	0.985	0.018	0.026	0.006	0.017	0.007	0.019	0.003
6/25/2012	1	0.985	0.008	0.017	0.007	0.010	0.006	0.018	0.002
6/25/2012	2	0.985	0.009	0.025	0.006	0.012	0.007	0.025	0.002
6/25/2012	3	0.985	0.011	0.047	0.008	0.013	0.008	0.019	0.002
6/25/2012	4	0.985	0.007	0.019	0.009	0.012	0.004	0.021	0.003
6/25/2012	5	0.985	0.005	0.027	0.010	0.021	0.003	0.022	0.005
6/25/2012	6	0.985	0.009	0.026	0.017	0.023	0.007	0.019	0.003
6/25/2012	7	0.985	0.008	0.031	0.014	0.108	0.015	0.015	0.002
6/25/2012	8	0.985	0.009	0.027	0.010	0.063	0.009	0.021	0.002
6/25/2012	9	0.985	0.009	0.022	0.008	0.061	0.011	0.038	0.002
6/25/2012	10	0.985	0.008	0.018	0.008	0.037	0.011	0.021	0.002
6/25/2012	11	---	---	0.011	0.008	0.024	0.009	0.020	0.002
6/25/2012	12	0.985	0.009	0.020	0.009	0.035	0.008	0.015	0.985
6/25/2012	13	0.010	0.006	0.008	0.007	0.112	0.008	0.009	0.002
6/25/2012	14	0.010	0.005	0.008	0.006	0.097	0.007	0.009	0.006
6/25/2012	15	0.012	0.003	0.024	0.004	0.079	0.007	0.008	0.006
6/25/2012	16	0.009	0.002	0.000	0.001	0.019	0.004	0.007	0.004
6/25/2012	17	0.054	0.006	0.000	-0.001	0.007	0.002	0.006	0.003
6/25/2012	18	0.011	0.006	0.003	-0.001	0.008	0.002	0.006	0.001
6/25/2012	19	0.008	0.002	0.006	0.001	0.006	0.002	0.004	0.002
6/25/2012	20	0.007	0.003	0.009	0.003	0.007	0.001	0.003	0.003
6/25/2012	21	0.020	0.006	0.020	0.008	0.018	0.002	0.010	0.004
6/25/2012	22	0.031	0.009	0.044	0.010	0.025	0.005	0.033	0.009
6/25/2012	23	0.040	0.012	0.042	0.011	0.041	0.016	0.031	0.020
6/26/2012	0	0.044	0.012	0.043	0.010	0.034	0.012	0.093	0.018
6/26/2012	1	0.040	0.016	0.032	0.009	0.030	0.009	0.038	0.008
6/26/2012	2	0.024	0.018	0.030	0.007	0.037	0.006	0.015	0.005
6/26/2012	3	0.017	0.024	0.029	0.006	0.012	0.005	0.014	0.003
6/26/2012	4	0.020	0.017	0.027	0.006	0.019	0.004	0.016	0.004
6/26/2012	5	0.028	0.016	0.024	0.006	0.018	0.006	0.013	0.005
6/26/2012	6	0.030	0.020	0.030	0.006	0.048	0.007	0.020	0.007
6/26/2012	7	0.022	0.008	0.019	0.006	0.060	0.008	0.018	0.007
6/26/2012	8	0.023	0.008	0.026	0.004	0.084	0.008	0.017	0.008
6/26/2012	9	0.024	0.006	0.016	0.002	0.038	0.008	0.020	0.006
6/26/2012	10	0.016	0.004	0.017	0.003	0.013	0.007	0.014	-0.015
6/26/2012	11	0.031	0.008	0.012	0.002	0.020	0.005	0.011	0.011
6/26/2012	12	0.017	0.012	0.011	0.000	0.014	0.006	0.010	0.012
6/26/2012	13	0.004	0.006	0.008	-0.002	0.013	0.004	0.011	0.009
6/26/2012	14	0.003	0.005	0.006	-0.001	0.025	0.005	0.013	0.005
6/26/2012	15	0.006	0.005	0.006	0.001	0.022	0.005	0.009	0.003
6/26/2012	16	0.009	0.004	0.008	0.001	0.023	0.002	0.006	0.002
6/26/2012	17	0.007	0.002	0.007	-0.001	0.006	-0.001	0.004	0.003
6/26/2012	18	0.006	0.000	0.006	0.000	0.003	-0.001	0.028	0.003
6/26/2012	19	0.004	0.002	0.003	-0.001	0.004	-0.001	0.003	0.005
6/26/2012	20	0.005	0.004	0.003	0.001	0.006	0.002	0.005	0.004
6/26/2012	21	0.008	0.004	0.005	0.004	0.008	0.003	0.006	0.000
6/26/2012	22	0.012	0.005	0.007	0.003	0.010	0.002	0.008	0.002
6/26/2012	23	0.013	0.004	0.019	0.005	0.010	0.005	0.012	0.005



DESERT SUNLIGHT SOLAR FARM

TABLE 3 - HOURLY BAM DATA

(Please refer to Table 3 cover page for additional details.)

All values are in units of milligrams per cubic meter.

Date	Hour	North Station		East Station		South Station		West Station	
		PM10	PM2.5	PM10	PM2.5	PM10	PM2.5	PM10	PM2.5
6/27/2012	0	0.012	0.004	0.025	0.007	0.013	0.005	0.015	0.005
6/27/2012	1	0.018	0.006	0.018	0.006	0.015	0.004	0.015	0.004
6/27/2012	2	0.025	0.008	0.020	0.004	0.013	0.004	---	---
6/27/2012	3	0.023	0.008	0.026	0.006	0.016	0.005	---	---
6/27/2012	4	0.025	0.007	0.021	0.006	0.017	0.005	---	---
6/27/2012	5	0.023	0.006	0.023	0.005	0.015	0.006	---	---
6/27/2012	6	0.021	0.005	0.018	0.006	0.041	0.009	---	---
6/27/2012	7	0.019	0.008	0.015	0.005	0.055	0.010	---	---
6/27/2012	8	0.020	0.009	0.017	0.005	0.038	0.007	0.985	0.985
6/27/2012	9	0.018	0.006	0.020	0.006	0.020	0.006	0.012	-0.006
6/27/2012	10	0.017	0.006	0.013	0.008	0.013	0.006	0.008	-0.005
6/27/2012	11	0.016	0.006	0.010	0.006	0.025	0.003	0.004	-0.003
6/27/2012	12	0.023	0.007	0.007	0.003	0.018	0.004	0.006	-0.001
6/27/2012	13	0.014	0.006	0.007	0.003	0.059	0.007	0.008	0.003
6/27/2012	14	0.013	0.006	0.009	0.004	0.028	0.008	0.015	0.008
6/27/2012	15	0.017	0.007	0.012	0.005	0.027	0.006	0.010	0.009
6/27/2012	16	0.020	0.008	0.016	0.002	0.019	0.006	0.016	0.006
6/27/2012	17	0.013	0.006	0.016	0.003	0.016	0.005	0.012	0.006
6/27/2012	18	0.012	0.004	0.011	0.007	0.012	0.006	0.011	0.007
6/27/2012	19	0.011	0.005	0.008	0.015	0.012	0.005	0.010	0.005
6/27/2012	20	0.010	0.005	0.007	0.002	0.013	0.003	0.007	0.004
6/27/2012	21	0.016	0.005	0.017	0.005	0.017	0.003	0.015	0.005
6/27/2012	22	0.019	0.007	0.026	0.010	0.025	0.005	0.019	0.008
6/27/2012	23	0.025	0.009	0.030	0.009	0.022	0.016	0.026	0.009
6/28/2012	0	0.034	0.011	0.052	0.010	0.036	0.016	0.035	0.011
6/28/2012	1	0.034	0.013	0.040	0.013	0.033	0.014	0.032	0.013
6/28/2012	2	0.022	0.012	0.038	0.011	0.031	0.014	0.022	0.010
6/28/2012	3	0.025	0.011	0.028	0.010	0.021	0.009	0.022	0.007
6/28/2012	4	0.026	0.011	0.036	0.012	0.022	0.006	0.020	0.007
6/28/2012	5	0.026	0.012	0.031	0.010	0.018	0.006	0.018	0.009
6/28/2012	6	0.025	0.012	0.025	0.007	0.058	0.007	0.026	0.009
6/28/2012	7	0.025	0.010	0.022	0.010	0.105	0.011	0.016	0.009
6/28/2012	8	0.024	0.009	0.021	0.009	0.075	0.012	0.025	0.008
6/28/2012	9	0.022	0.010	0.018	0.007	0.042	0.011	0.027	0.007
6/28/2012	10	0.024	0.009	0.016	0.004	0.113	0.985	0.023	0.008
6/28/2012	11	0.019	0.009	0.009	0.002	0.985	0.985	0.017	0.008
6/28/2012	12	0.018	0.008	0.019	0.002	0.985	0.010	0.020	0.006
6/28/2012	13	0.017	0.006	0.010	0.003	0.124	0.009	0.017	0.005
6/28/2012	14	0.017	0.005	0.013	0.005	0.048	0.008	0.011	0.006
6/28/2012	15	0.019	0.007	0.012	0.006	0.036	0.006	0.017	0.011
6/28/2012	16	0.016	0.006	0.021	0.006	0.014	0.007	0.014	0.013
6/28/2012	17	0.017	0.006	0.007	0.004	0.014	0.010	0.011	0.006
6/28/2012	18	0.012	0.008	0.010	0.004	0.013	0.009	0.012	0.003
6/28/2012	19	0.010	0.007	0.013	0.006	0.010	0.004	0.013	0.006
6/28/2012	20	0.015	0.005	0.016	0.007	0.012	0.006	0.010	0.006
6/28/2012	21	0.023	0.006	0.025	0.007	0.027	0.006	0.011	0.007
6/28/2012	22	0.025	0.008	0.030	0.009	0.027	0.007	0.028	0.007
6/28/2012	23	0.053	0.017	0.047	0.016	0.050	0.016	0.048	0.016



DESERT SUNLIGHT SOLAR FARM

TABLE 3 - HOURLY BAM DATA

(Please refer to Table 3 cover page for additional details.)

All values are in units of milligrams per cubic meter.

Date	Hour	North Station		East Station		South Station		West Station	
		PM10	PM2.5	PM10	PM2.5	PM10	PM2.5	PM10	PM2.5
6/29/2012	0	0.053	0.014	0.101	0.014	0.055	0.010	0.057	0.017
6/29/2012	1	0.047	0.014	0.037	0.013	0.043	0.011	0.040	0.010
6/29/2012	2	0.039	0.014	0.036	0.010	0.031	0.011	0.028	0.010
6/29/2012	3	0.027	0.012	0.029	0.009	0.021	0.010	0.024	0.010
6/29/2012	4	0.031	0.012	0.027	0.010	0.023	0.007	0.028	0.010
6/29/2012	5	0.020	0.012	0.027	0.012	0.021	0.001	0.017	0.006
6/29/2012	6	0.018	0.009	0.022	0.009	0.014	0.002	0.019	0.003
6/29/2012	7	0.020	0.008	0.020	0.006	0.025	0.007	0.016	0.005
6/29/2012	8	0.020	0.007	0.016	0.007	0.031	0.006	0.018	0.005
6/29/2012	9	0.016	0.006	0.012	0.006	0.015	0.005	0.013	0.003
6/29/2012	10	0.017	0.006	0.011	0.003	0.014	0.003	0.011	0.007
6/29/2012	11	0.985	0.004	0.024	0.006	0.016	0.002	0.011	0.010
6/29/2012	12	0.015	0.005	0.015	0.008	0.010	0.001	0.018	0.010
6/29/2012	13	0.013	0.006	0.016	0.004	0.018	0.000	0.008	0.012
6/29/2012	14	0.043	0.004	0.011	-0.001	0.006	0.985	0.007	0.008
6/29/2012	15	0.014	0.003	0.010	-0.001	0.005	-0.001	0.006	0.001
6/29/2012	16	0.010	0.003	0.008	0.002	0.003	0.000	0.004	0.001
6/29/2012	17	0.004	0.001	0.002	-0.001	0.003	0.002	0.004	0.001
6/29/2012	18	0.002	0.001	0.000	0.000	0.009	0.002	0.008	0.003
6/29/2012	19	0.006	0.004	0.005	0.004	0.010	0.000	0.010	0.006
6/29/2012	20	0.009	0.005	0.006	0.001	0.007	0.001	0.006	0.005
6/29/2012	21	0.011	0.005	0.008	-0.002	0.008	0.004	0.006	0.005
6/29/2012	22	0.016	0.006	0.017	0.002	0.018	0.004	0.021	0.004
6/29/2012	23	0.019	0.007	0.025	0.005	0.020	0.005	0.019	0.018
6/30/2012	0	0.017	0.009	0.023	0.005	0.027	0.006	0.020	0.014
6/30/2012	1	0.017	0.009	0.018	0.003	0.015	0.985	0.018	0.010
6/30/2012	2	0.020	0.010	0.023	0.004	0.018	0.008	0.018	0.006
6/30/2012	3	0.030	0.010	0.027	0.008	0.020	0.008	0.021	0.005
6/30/2012	4	0.025	0.010	0.021	0.009	0.020	0.007	0.018	0.006
6/30/2012	5	0.017	0.008	0.020	0.010	0.017	0.005	0.017	0.007
6/30/2012	6	0.021	0.007	0.030	0.010	0.018	0.007	0.013	0.008
6/30/2012	7	0.015	0.009	0.017	0.008	0.018	0.009	0.013	0.007
6/30/2012	8	0.016	0.011	0.020	0.009	0.016	0.985	0.018	0.008
6/30/2012	9	0.020	0.008	0.016	0.007	0.017	0.985	0.014	0.009
6/30/2012	10	0.019	0.007	0.014	0.003	0.014	0.985	0.015	0.005
6/30/2012	11	0.016	0.007	0.016	0.004	0.013	0.985	0.018	0.003
6/30/2012	12	0.018	0.008	0.016	0.004	0.013	0.005	0.055	0.008
6/30/2012	13	0.013	0.011	0.012	0.006	0.021	0.985	0.015	0.007
6/30/2012	14	0.013	0.007	0.015	0.005	0.014	0.985	0.018	0.007
6/30/2012	15	0.016	0.004	0.012	0.003	0.017	0.985	0.014	0.008
6/30/2012	16	0.016	0.003	0.017	0.004	0.012	0.985	0.013	0.004
6/30/2012	17	0.013	0.005	0.009	0.002	0.011	0.985	0.010	0.004
6/30/2012	18	0.009	0.006	0.010	-0.001	0.011	0.985	0.010	0.003
6/30/2012	19	0.009	0.003	0.010	0.000	0.011	0.985	0.010	0.003
6/30/2012	20	0.014	0.004	0.011	0.002	0.012	0.985	0.008	0.003
6/30/2012	21	0.013	0.009	0.010	0.004	0.017	0.985	0.016	0.006
6/30/2012	22	0.015	0.010	0.022	0.007	0.026	0.985	0.014	0.008
6/30/2012	23	0.017	0.010	0.023	0.005	0.019	0.985	0.017	0.006



Table 4

Monitored Constituents

The table below shows the sample dates. Table 4 is on the following page.

Station	Week	Sample Date	Sample ID	Work Order	Duration
North	Week 1	5/29/2012	QFF 12-033	1215916	20.25
	Week 2	6/5/2012	QFF 12-058	1216002	20
	Week 3	6/14/2012	QFF 12-064	1217080	21.25
	Week 4	6/19/2012	QFF 12-068	1217438	20.75
	Week 5	6/26/2012	QFF 12-072	1218515	20.75
East	Week 1	5/29/2012	QFF 12-055	1215918	22.75
	Week 2	6/5/2012	QFF 12-059	1216003	21.67
	Week 3	6/14/2012	QFF 12-062	1217078	24
	Week 4	6/19/2012	QFF 12-066	1217435	24
	Week 5	6/26/2012	QFF 12-070	1218513	24
West	Week 1	5/29/2012	QFF 12-034	1215917	20.25
	Week 2	6/5/2012	QFF 12-057	1216001	24
	Week 3	6/14/2012	QFF 12-063	1217079	24
	Week 4	6/19/2012	QFF 12-067	1217436	24
	Week 5	6/26/2012	QFF 12-071	1218514	18.25
South	Week 1	5/29/2012	QFF 12-056	1215919	24
	Week 2	6/5/2012	QFF 12-060	1216004	24
	Week 3	6/14/2012	QFF 12-061	1217077	24
	Week 4	6/19/2012	QFF 12-065	1217434	24
	Week 5	6/26/2012	QFF 12-069	1218512	24



Table 4: Monitored Constituents See Footnotes

Analyte	Week	North Station	East Station	West Station	South Station
Elemental Carbon	Week 1	0.34	0.42	0.34	0.3
	Week 2	0.57	0.37	0.87	0.46
	Week 3	0.28	0.54	0.5	0.83
	Week 4	0.48	0.5	0.45	0.75
	Week 5	0.47	0.55	0.27	0.59
Arsenic	Week 1	< LOD	< LOD	< LOD	< LOD
	Week 2	< LOD	< LOD	< LOD	< LOD
	Week 3	< LOD	< LOD	< LOD	< LOD
	Week 4	< LOD	< LOD	< LOD	< LOD
	Week 5	< LOD	< LOD	< LOD	< LOD
Beryllium	Week 1	< LOD	< LOD	< LOD	< LOD
	Week 2	< LOD	< LOD	< LOD	< LOD
	Week 3	< LOD	0.000089	0.000096	0.000084
	Week 4	< LOD	0.000094	< LOD	< LOD
	Week 5	< LOD	< LOD	< LOD	< LOD
Cadmium	Week 1	< LOD	< LOD	< LOD	< LOD
	Week 2	< LOD	< LOD	< LOD	< LOD
	Week 3	< LOD	< LOD	< LOD	< LOD
	Week 4	< LOD	< LOD	< LOD	< LOD
	Week 5	< LOD	< LOD	< LOD	< LOD
Copper	Week 1	0.026	0.02	0.028	0.02
	Week 2	0.025	0.02	0.023	0.017
	Week 3	0.014	0.025	0.036	0.026
	Week 4	0.016	0.032	0.022	0.028
	Week 5	0.02	0.044	0.017	0.022
Lead	Week 1	< LOD	< LOD	< LOD	< LOD
	Week 2	< LOD	< LOD	< LOD	< LOD
	Week 3	< LOD	< LOD	< LOD	< LOD
	Week 4	< LOD	< LOD	< LOD	< LOD
	Week 5	< LOD	< LOD	< LOD	< LOD
Manganese	Week 1	0.016	0.021	0.02	0.022
	Week 2	0.045	0.02	0.044	0.042
	Week 3	0.037	0.045	0.04	0.052
	Week 4	0.028	0.061	0.027	0.051
	Week 5	0.0098	0.012	0.0095	0.027
Nickel	Week 1	< LOD	< LOD	< LOD	< LOD
	Week 2	< LOD	< LOD	< LOD	< LOD
	Week 3	0.0012	0.0011	0.0013	0.0014
	Week 4	< LOD	0.0016	< LOD	0.0015
	Week 5	< LOD	< LOD	< LOD	< LOD
Selenium	Week 1	0.028	0.022	< LOD	0.022
	Week 2	0.025	0.021	< LOD	< LOD
	Week 3	< LOD	0.022	0.024	< LOD
	Week 4	< LOD	0.027	0.025	0.018
	Week 5	< LOD	< LOD	< LOD	< LOD

Note 1: All values are in units of micrograms per cubic meter.

Note 2: < LOD = Less than Limit of Detection (LOD).

Note 3: Sample dates are shown in the cover page for this table.

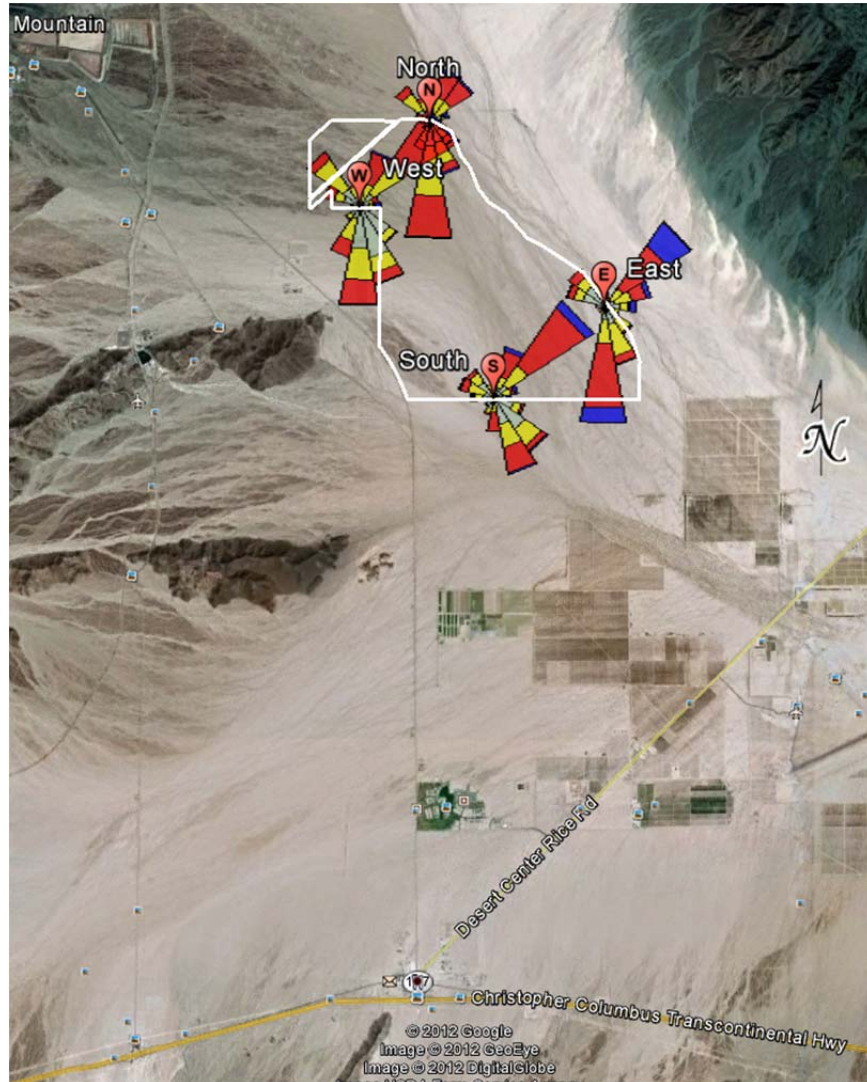


Figure 1: Meteorological Data Summary

The triangles in Figure 1 indicate the direction the wind was blowing **to** rather than **from**. The table below provides a brief explanation of the various wind speed classes.

Color	Wind Speed (knots)
Cyan	≥ 22 knots
Green	17 – 21 knots
Blue	11 – 17 knots
Red	7 – 11 knots
Yellow	4 – 7 knots
Light Green	1 – 4 knots