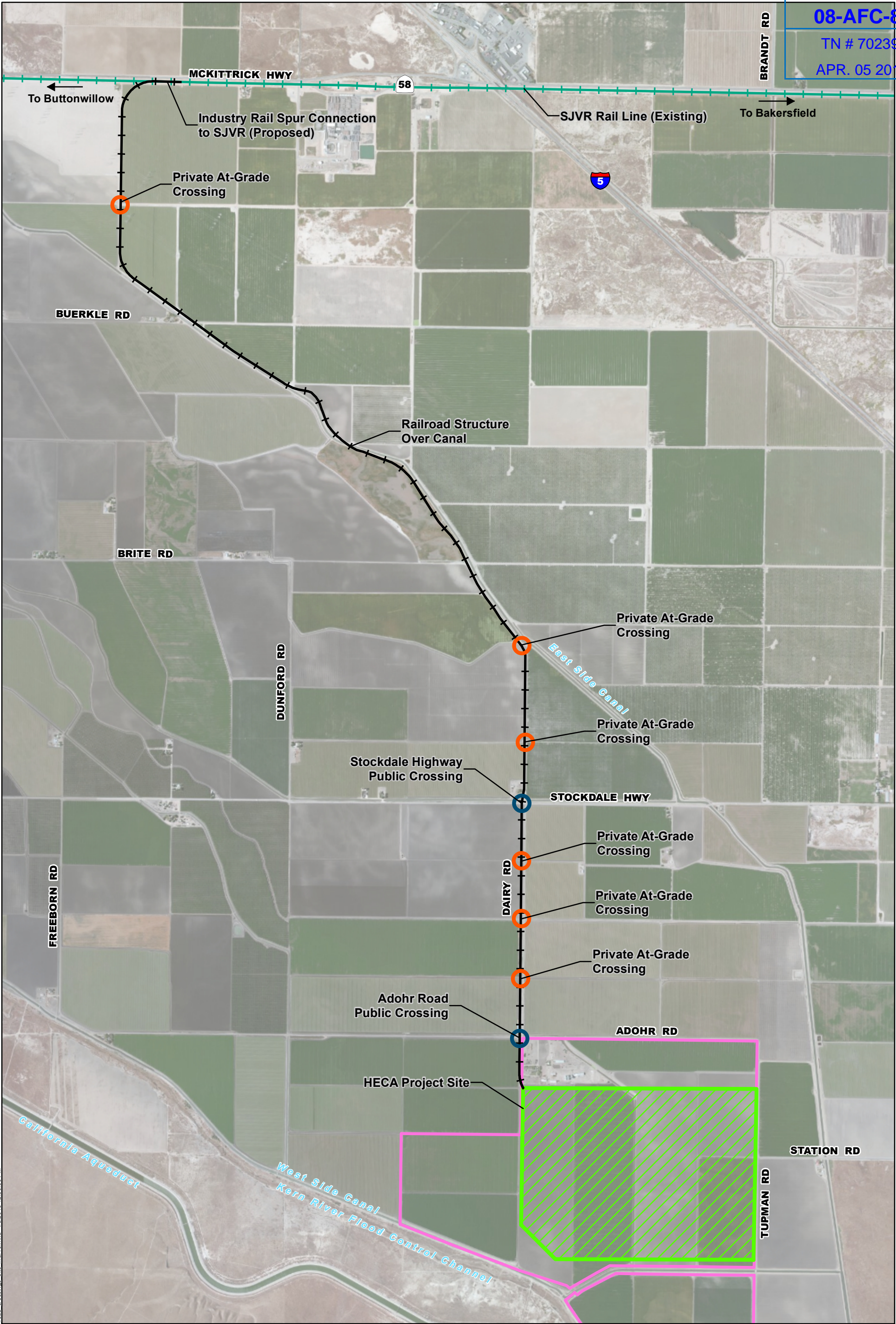


DOCKETED
08-AFC-8A

TN # 70239

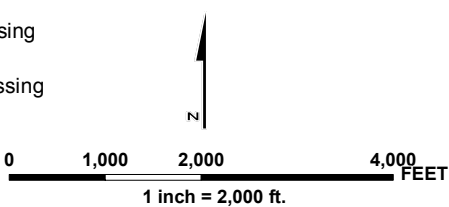
APR. 05 2013



- Project Site
- Controlled Area
- Industry Rail Spur (Proposed) - 5.27 Miles
- SJVR Rail Line (Existing)

- Railroad Public Crossing
- Railroad Private Crossing

Note:
SJVR = San Joaquin Valley Railroad



PROPOSED RAILROAD AND ROAD CROSSINGS
NEAR THE HECA PROJECT SITE

March 2013

Hydrogen Energy California (HECA)
Kern County, California

URS

EXHIBIT-A