

DOCKETED

Docket Number:	09-AFC-07C
Project Title:	Palen Solar Power Project - Compliance
TN #:	200186
Document Title:	PSH's Revised Supplemental Response to DR 54 & 55
Description:	N/A
Filer:	Marie Fleming
Organization:	Galati Blek LLP
Submitter Role:	Applicant's Representative
Submission Date:	8/13/2013 12:04:36 PM
Docketed Date:	8/13/2013

August 13, 2013

California Energy Commission
Dockets Unit
1516 Ninth Street
Sacramento, CA 95814-5512

**Subject: PALEN SOLAR HOLDINGS, LLC'S REVISED SUPPLEMENTAL
RESPONSE TO CEC STAFF DATA REQUESTS 54 & 55
PALEN SOLAR ELECTRIC GENERATING SYSTEM
DOCKET NO. (09-AFC-7C)**

Enclosed for filing with the California Energy Commission is the electronic version of **PALEN SOLAR HOLDINGS, LLC'S REVISED SUPPLEMENTAL RESPONSE TO CEC STAFF DATA REQUESTS 54 & 55**, for Palen Solar Electric Generating System (09-AFC-7C).

Sincerely,



Marie Fleming

Table 1. Previously Recorded Built Environment Resources in the PAA

Primary No.	Name	Description	Date	NRHP/CRHR Eligibility
P-33-5716	Rock House/Skylark Ranch	Three ranch buildings, including house/not extant	1935	Not eligible
P-33-5717	Desert Center Café	Art Deco commercial buildings: restaurant, gas station, swimming pool, three cabins	1925	Not eligible individually or as contributor to Desert Center District
P-33-5718	Desert Center Post Office	Three commercial buildings (former Army Air Base)	1942	Not eligible individually or as contributor to Desert Center District
P-33-5719	Stump Ranch	Two shanties and an outhouse	1933	Not eligible individually or as contributor to Desert Center District
P-33-5720	Desert Steve Ragsdale Memorial Plaque and Grave	Grave site/cenotaph/ petroglyphs	1962	Not eligible individually or as contributor to Desert Center District
P-33-5721	"Hollywood" Cabins	Eight barracks buildings (former Army Air Base)	1942	Not eligible individually or as contributor to Desert Center District
P-33-6827/17373	Totem Pole Date Ranch	Ranch house, shed, water tower, swimming pool, date tree garden	1935	Not eligible
P-33-6828	Aztec Well	Cabin, shed, outhouse, garage, tank, well, windmill	1932	Not eligible
P-33-6831	--	Cabin, shed, ore processing mill, tank, well, windmill	1930	Not eligible
P-33-6832	Ragsdale House	Residence (moved)	1933	Not eligible individually or as contributor to Desert Center District
P-33-6833	Old School House	School building	1935	Not eligible individually or as contributor to Desert Center District

Primary No.	Name	Description	Date	NRHP/CRHR Eligibility
P-33-6836	Desert Center Army Air Field	Army Air Base	1942–44	Recommended NRHP eligible (C, D); CRHR eligible (3, 4)
P-33-6913	Eagle Mountain	Mining complex/company town	1881	Not eligible
P-33-6914	Eagle Mountain Pumping Plant	Pumping plant complex	1936	Recommended NRHP eligible (A, C); CRHR eligible (1, 3)
P-33-11265*	Colorado River Aqueduct	Aqueduct and tunnels	1933–60	Recommended NRHP eligible (A, C, D); CRHR eligible (1, 3, 4)
P-33-11638	Desert Training Center	55,000 square miles of training area	1942–44	SHL 985; Recommended NRHP eligible (A); CRHR eligible (1)
P-33-13673*	Eagle Mountain Mine Railroad	Industrial Mining Railroad	1948	Not eligible
P-33-13987*	Southern California Telephone Co. Telephone and Telegraph Line	Wooden pole telegraph line	1932–33	Not eligible
P-33-19415*	Blythe-Eagle Mountain Transmission Line	Double Wood pole transmission line	c.1957	Not eligible
P-33-21002	Desert Center Red Brick School Building	School building	1953	Not eligible

NRHP = National Register of Historic Places

CRHR = California Register of Historic Resources

SHL = California State Historical Landmark

*previously recorded as linear archaeological resource

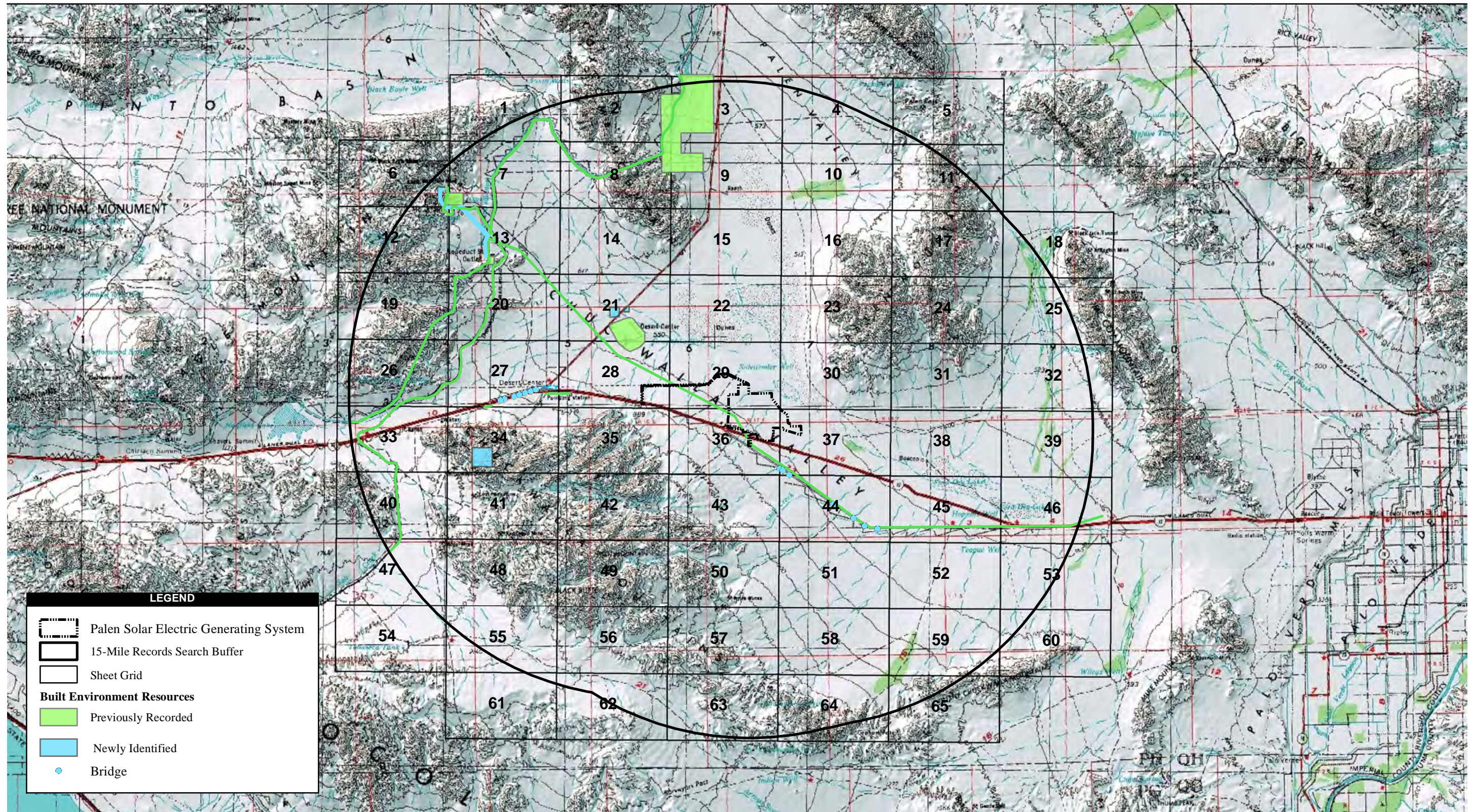
Table 2. Newly Identified Built Environment Resources in the PAA

Temporary Number	Name	Description	Date	NRHP/CRHR Eligibility
P-BE-001	Desert Center District	Discontiguous district	1925-1950	Not eligible
P-BE-002	Radio Towers/Microwave Station	Utility structures	ca.1960	Not evaluated (outside PAA viewshed; no access)

Temporary Number	Name	Description	Date	NRHP/CRHR Eligibility
P-BE-003	Pumping Station	43025 Aztec Ave/ Gas line pumping station	c.1960	Not eligible
P-BE-004	24475 Rice Rd	Residence/Farm	c.1960	Not eligible
P-BE-005	22100 Rice Rd	Residence/Farm	c.1960	Not eligible
P-BE-006	Pentecostal Church	Quonset and garages	c.1942	Not eligible
P-BE-007	No. 1 Eagle Mountain – KEM Transmission Line	Single wood pole transmission line	c.1950	Not eligible
P-BE-008	No. 2 Eagle Mountain – KEM Transmission Line	Single wood pole transmission line	c.1950	Not eligible

Table 3. Bridges Identified in the PAA

Bridge Number	Description	Date	Inventory Category	NRHP/CRHR Eligibility
56C-104	Sutro Ditch bridge	1931/1944	5	Not eligible
56C-105	Two-lane vehicular bridge	c.1931	--	Not eligible
56C-106	Two-lane vehicular bridge	c.1931	--	Not eligible
56C-108	Acari Ditch bridge	1931/1952	5	Not eligible
56C-109	Segal Ditch bridge	1961	5	Not eligible
56C-110	Two-lane vehicular bridge	c.1932	--	Not eligible
56C-111	Two-lane vehicular bridge	c.1932	--	Not eligible
56C-119	Tex Wash bridge	1932/1944	5	Not eligible
56C-120	Buena Ditch bridge	1932/1944	5	Not eligible
56C-121	Rockdale Ditch bridge	1932/1944	5	Not eligible
56C-122	Chuckwalla bridge	1932/1944	5	Not eligible
56C-123	Rockledge Ditch bridge	1932/1944	5	Not eligible
56C-124	Fineview Ditch bridge	1932/1944	5	Not eligible
56C-125	Desert Center bridge	1932/1944	5	Not eligible



Source: ESRI; AECOM; EIC

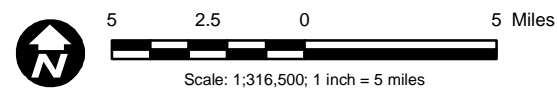


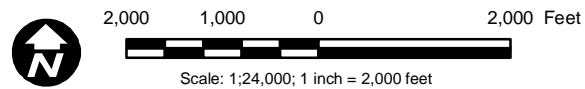
Figure 1
Palen Solar Electric Generating System Built Environment Resources Overview

Palen Solar Electric Generating System

Path: P:\2013\60301380_PSEGS\900-CAD-GIS\920 GIS\922_Maps\2013_07_26_Built_Env\PSEGS_Built_Overview_Results.mxd, 8/9/2013, wilson5

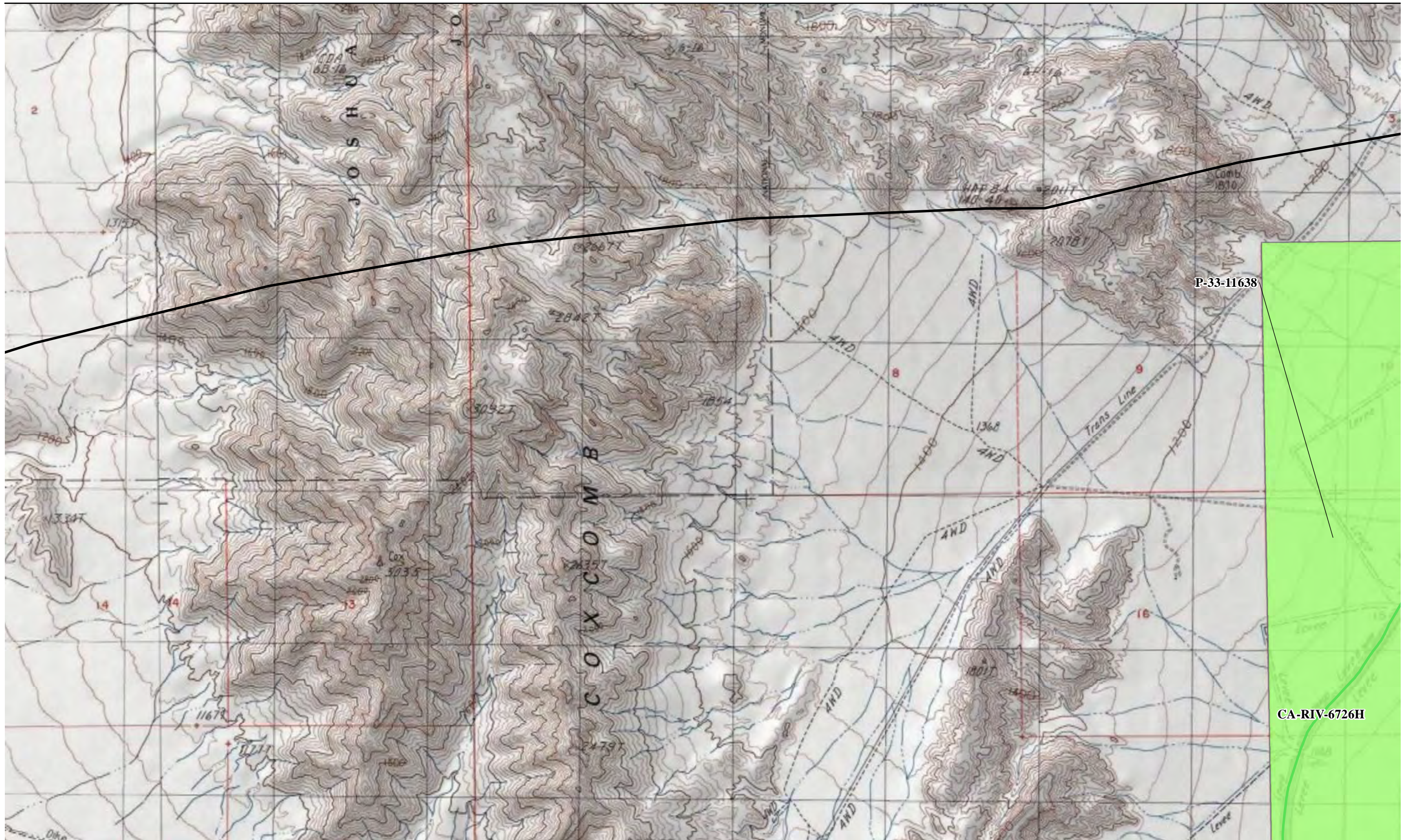


Source: ESRI; AECOM; EIC

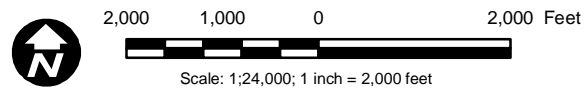


LEGEND		
Built Environment Resources		
	Previously Recorded	
	Newly Identified	 Bridge

Figure 2
Palen Solar Electric Generating System Built Environment Resources
Sheet 1 of 65

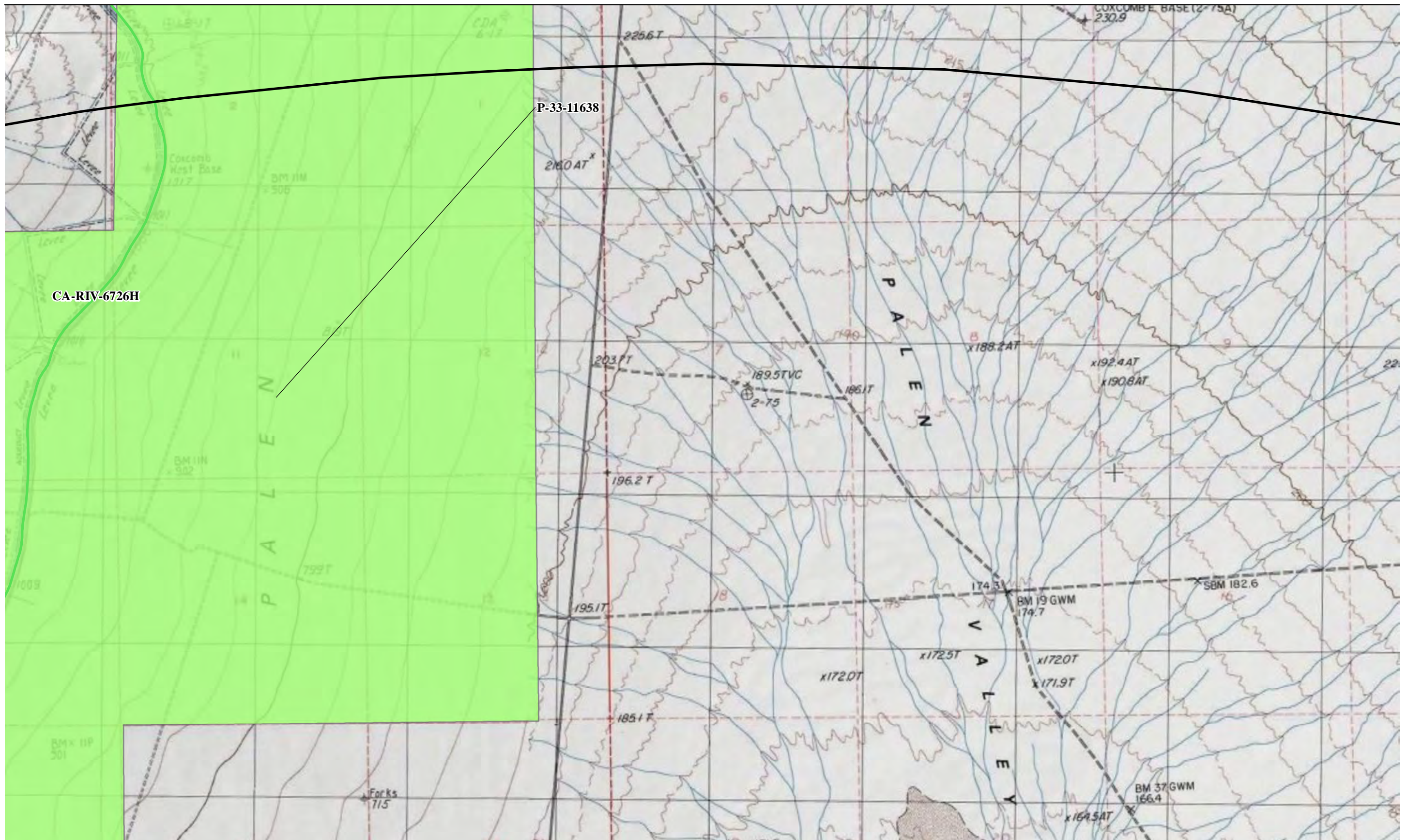


Source: ESRI; AECOM; EIC

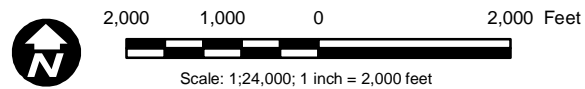


LEGEND		
Built Environment Resources		
	Previously Recorded	
	Newly Identified	
		 Bridge

Figure 2
Palen Solar Electric Generating System Built Environment Resources
Sheet 2 of 65



Source: ESRI; AECOM; EIC

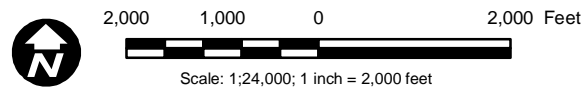


LEGEND		
Built Environment Resources		
	Previously Recorded	
	Newly Identified	 Bridge

Figure 2
Palen Solar Electric Generating System Built Environment Resources
 Sheet 3 of 65



Source: ESRI; AECOM; EIC



LEGEND		
Built Environment Resources		
	Previously Recorded	
	Newly Identified	 Bridge

Palen Solar Electric Generating System Built Environment Resources
Sheet 6 of 65

Figure 2

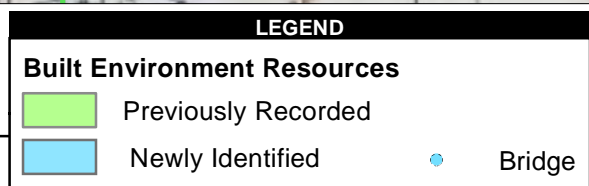
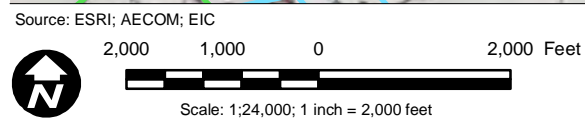
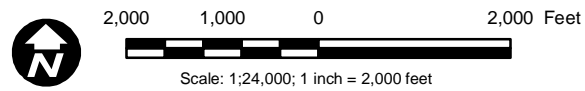


Figure 2
Palen Solar Electric Generating System Built Environment Resources
Sheet 7 of 65

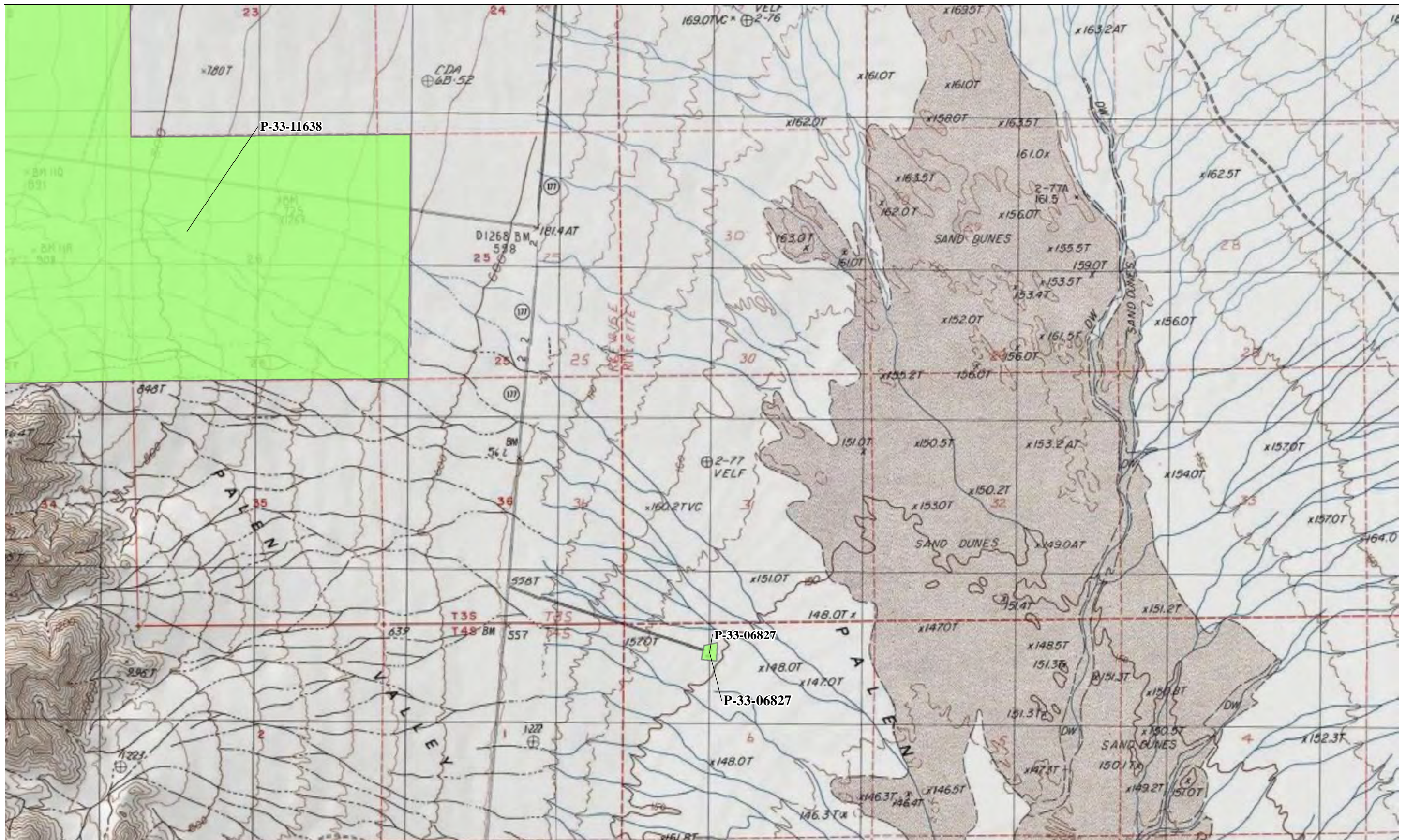


Source: ESRI; AECOM; EIC

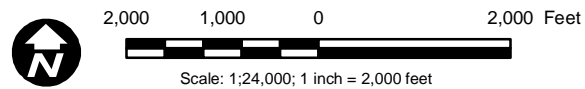


LEGEND	
Built Environment Resources	
█	Previously Recorded
█	Newly Identified
●	Bridge

Figure 2
Palen Solar Electric Generating System Built Environment Resources
Sheet 8 of 65



Source: ESRI; AECOM; EIC

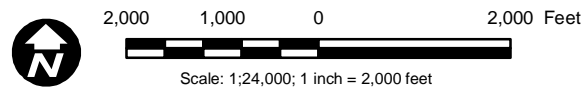


LEGEND		
Built Environment Resources		
	Previously Recorded	
	Newly Identified	 Bridge

Figure 2
Palen Solar Electric Generating System Built Environment Resources
Sheet 9 of 65

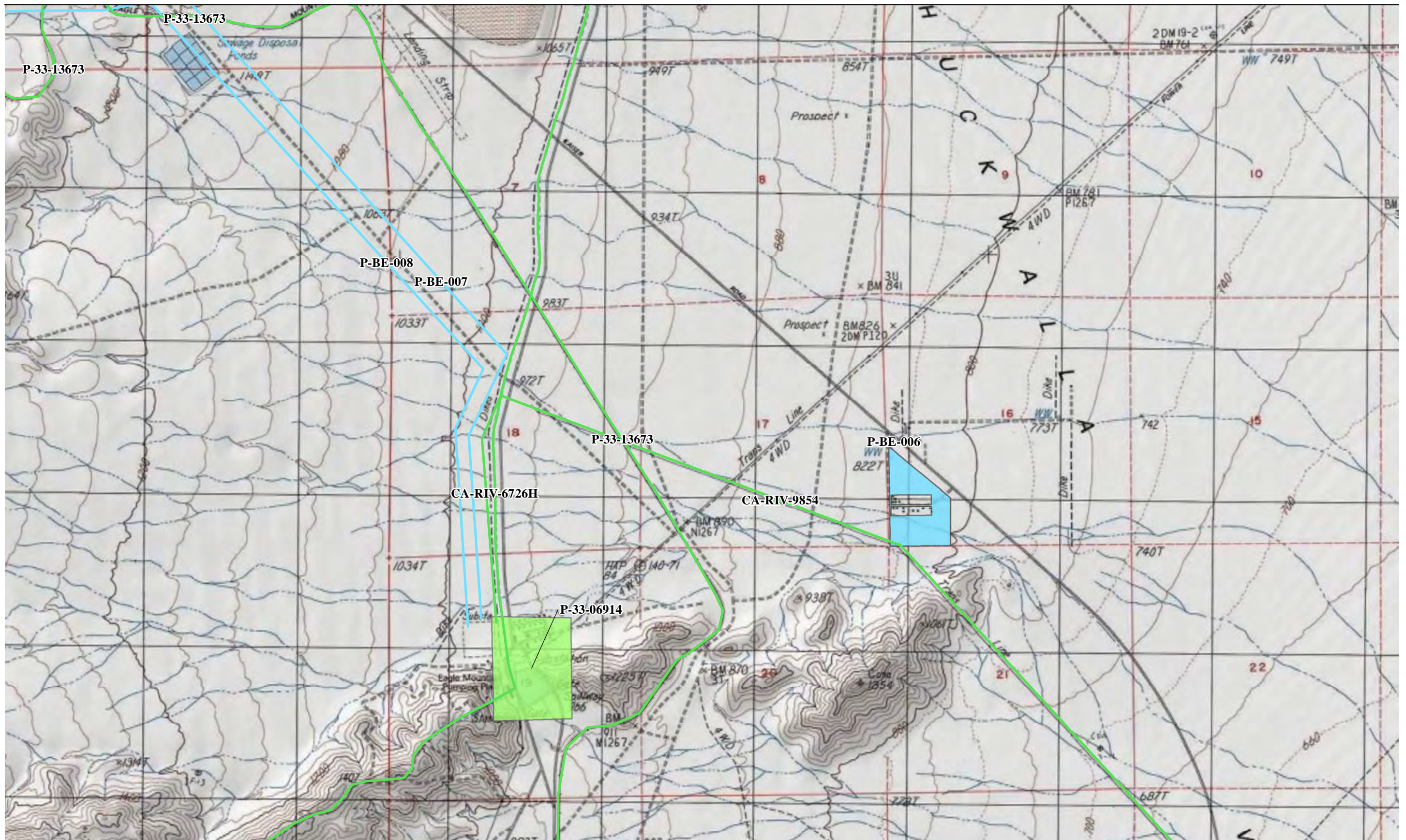


Source: ESRI; AECOM; EIC

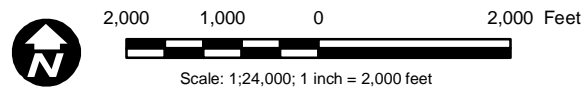


LEGEND	
Built Environment Resources	
■	Previously Recorded
■	Newly Identified
●	Bridge

Figure 2
Palen Solar Electric Generating System Built Environment Resources
Sheet 12 of 65

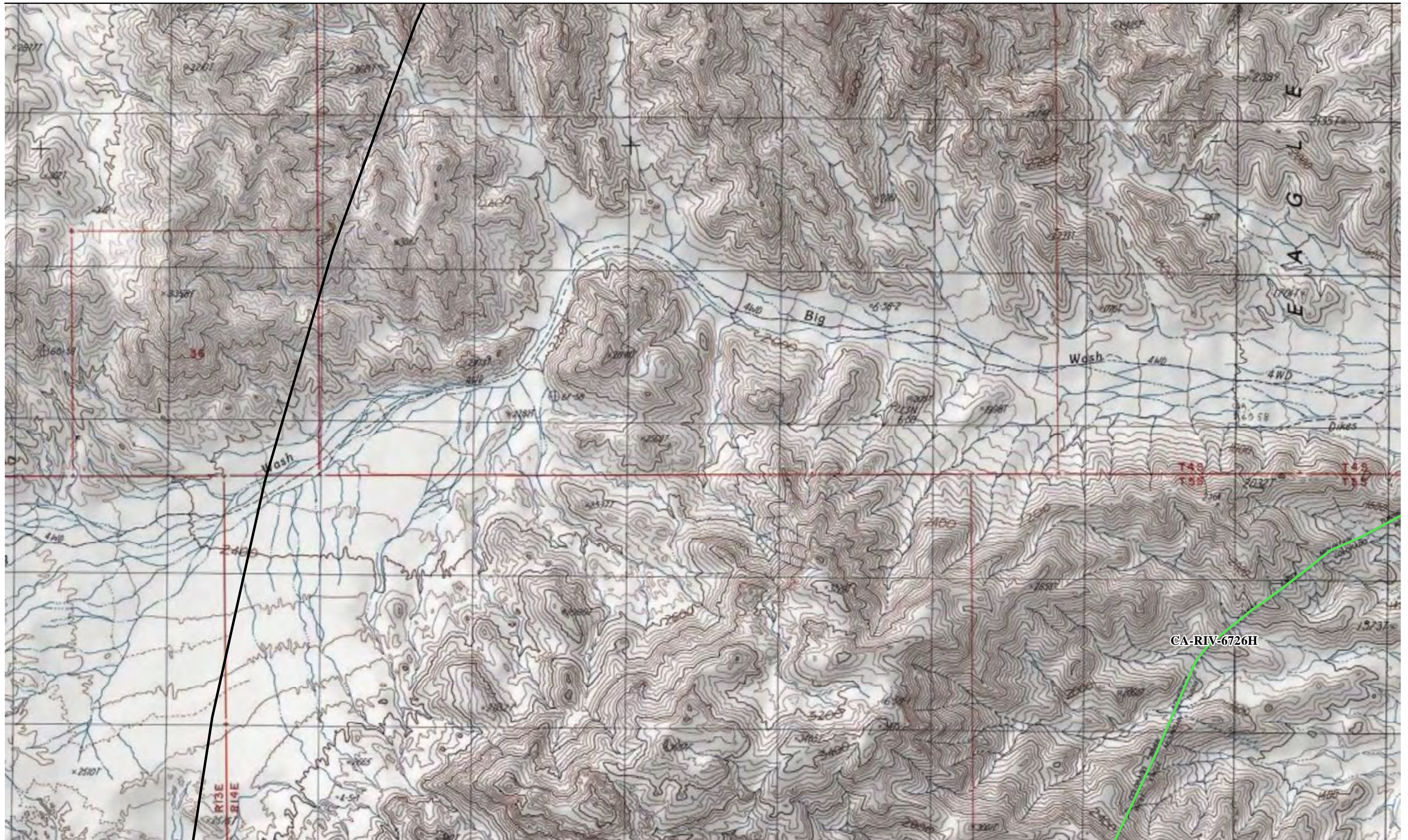


Source: ESRI; AECOM; EIC

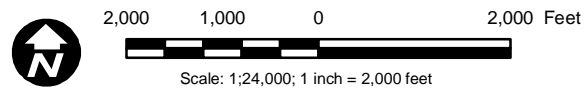


LEGEND		
Built Environment Resources		
	Previously Recorded	
	Newly Identified	
	Bridge	

Figure 2
Palen Solar Electric Generating System Built Environment Resources
Sheet 13 of 65

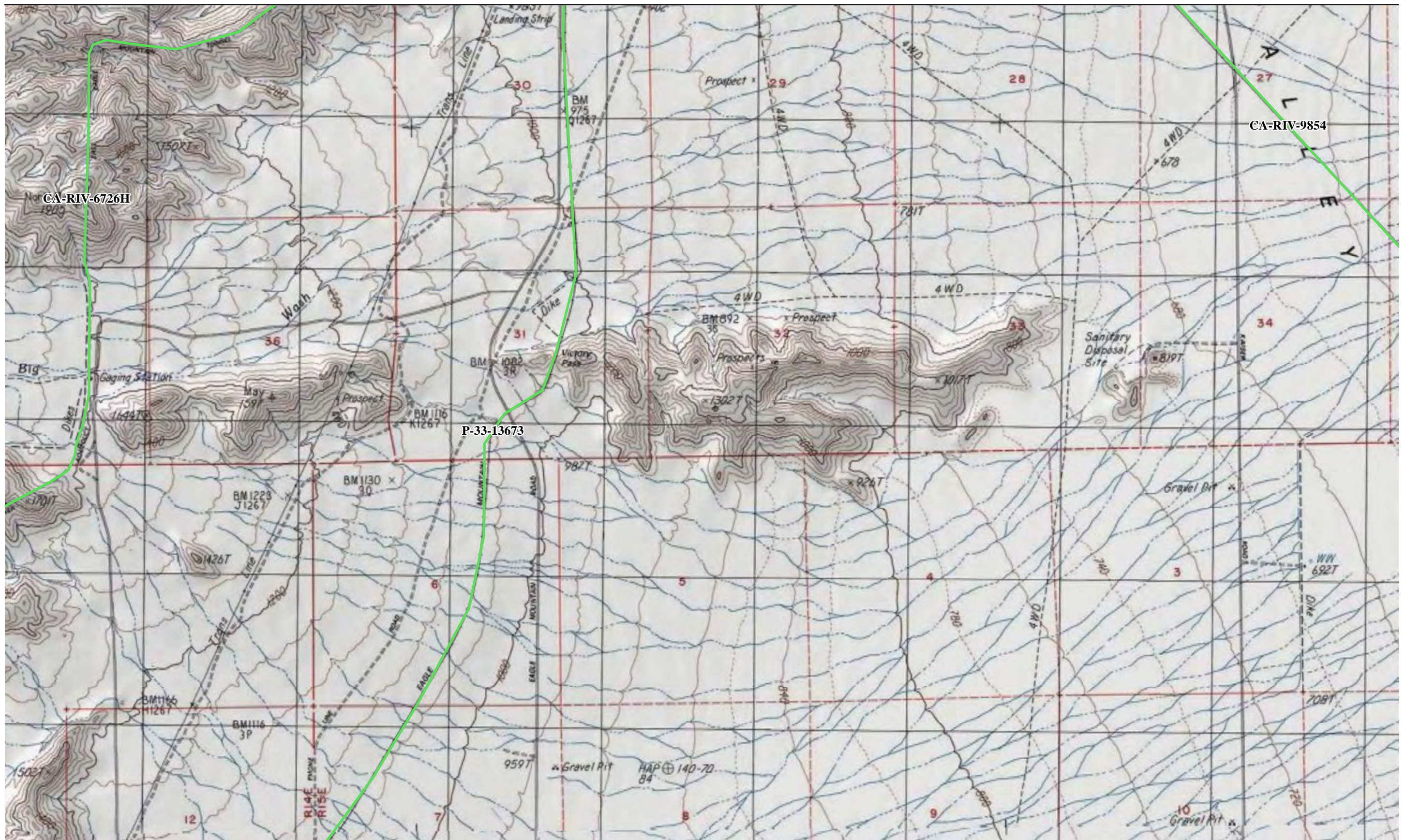


Source: ESRI; AECOM; EIC

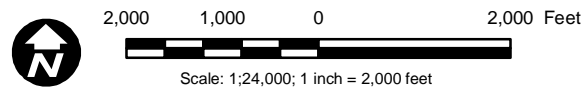


LEGEND		
Built Environment Resources		
█	Previously Recorded	
█	Newly Identified	
		● Bridge

Figure 2
Palen Solar Electric Generating System Built Environment Resources
Sheet 19 of 65

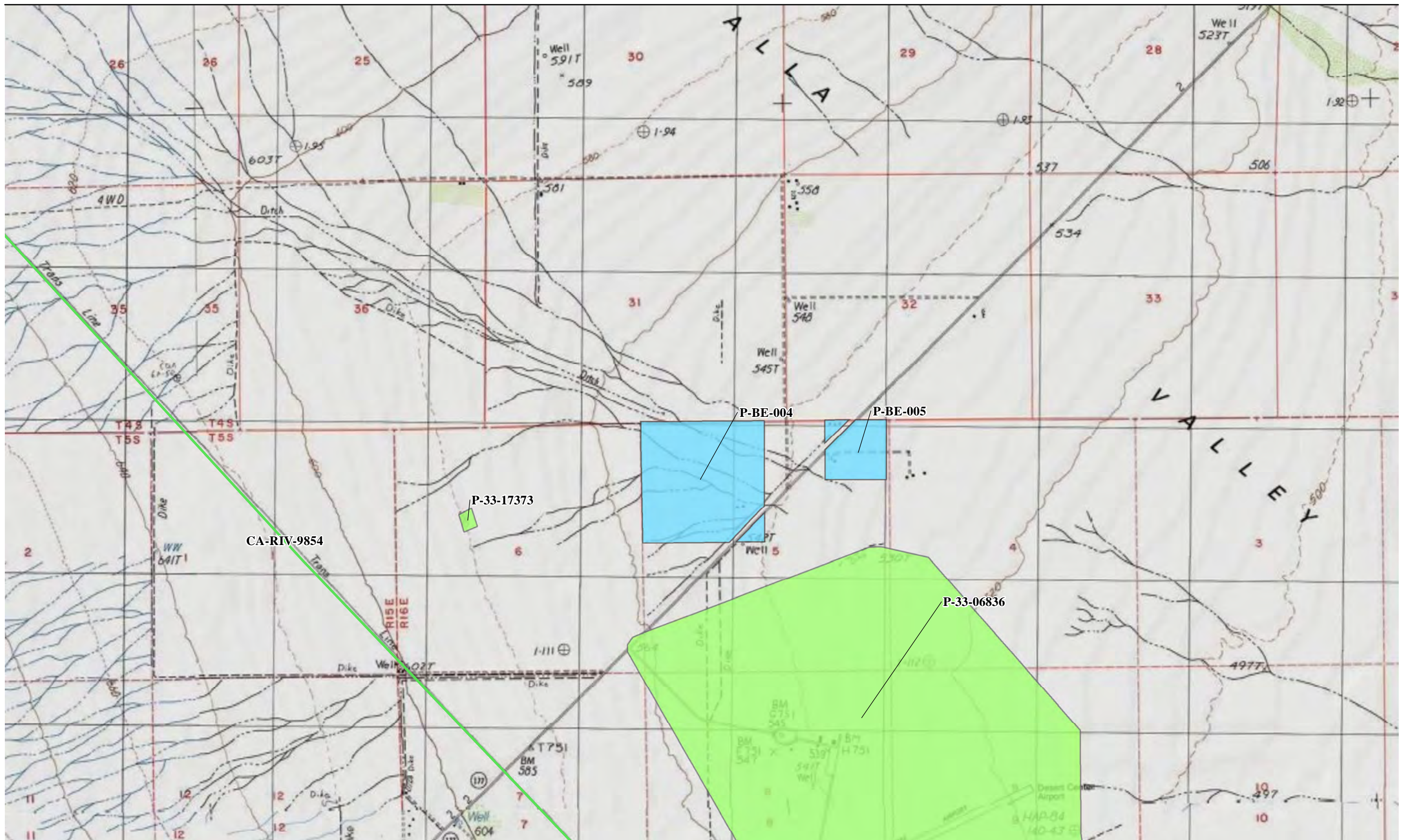


Source: ESRI; AECOM; EIC



LEGEND		
Built Environment Resources		
█	Previously Recorded	
█	Newly Identified	
		● Bridge

Figure 2
Palen Solar Electric Generating System Built Environment Resources
 Sheet 20 of 65



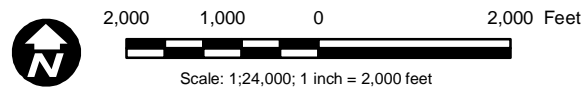
Source: ESRI; AECOM; EIC
 2,000 1,000 0 2,000 Feet
 Scale: 1:24,000; 1 inch = 2,000 feet

LEGEND		
Built Environment Resources		
	Previously Recorded	
	Newly Identified	
		 Bridge

Figure 2
Palen Solar Electric Generating System Built Environment Resources
 Sheet 21 of 65

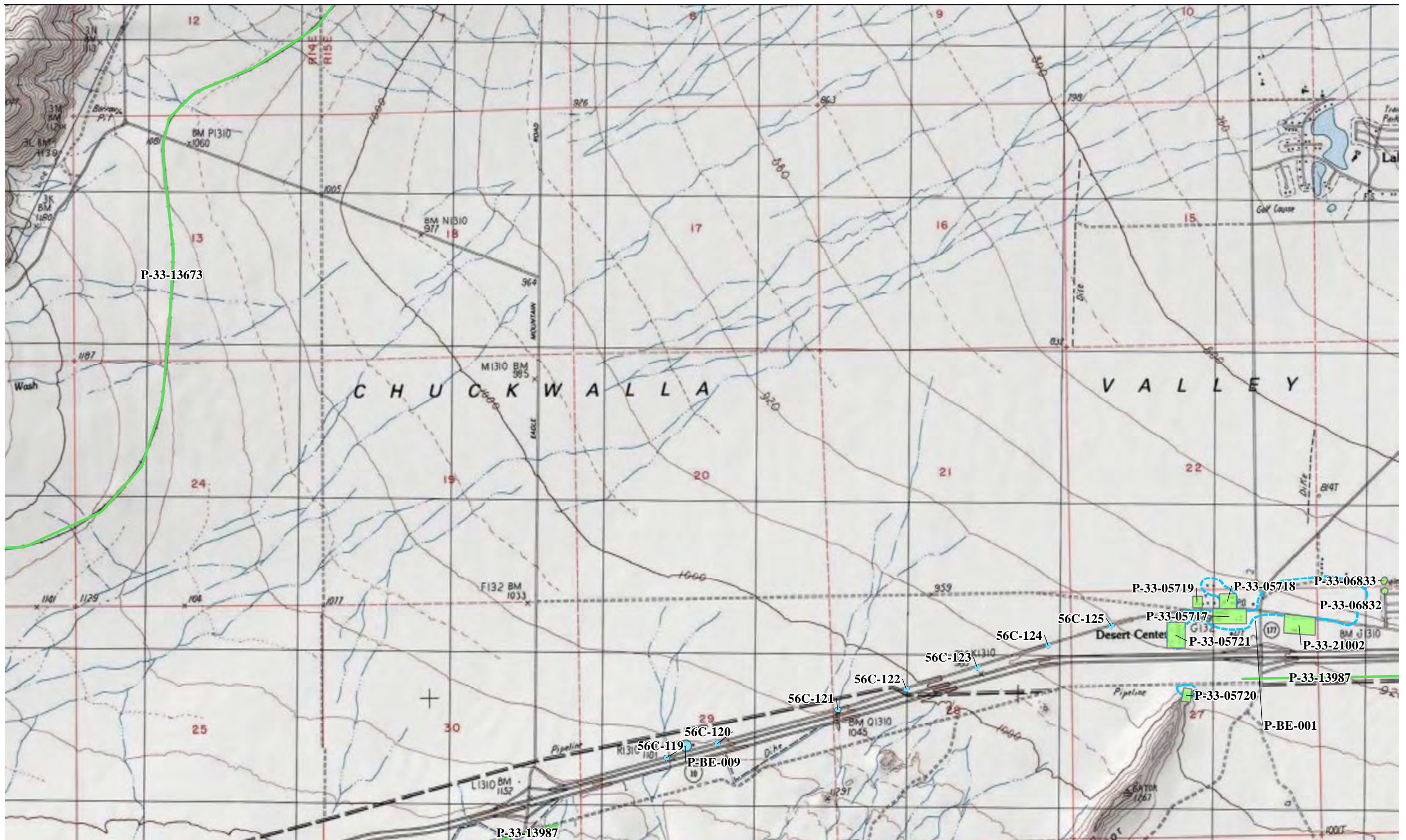


Source: ESRI; AECOM; EIC

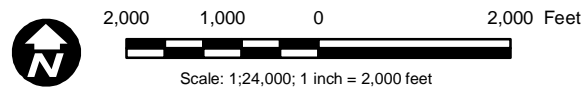


LEGEND		
Built Environment Resources		
█	Previously Recorded	
█	Newly Identified	
		● Bridge

Figure 2
Palen Solar Electric Generating System Built Environment Resources
Sheet 26 of 65

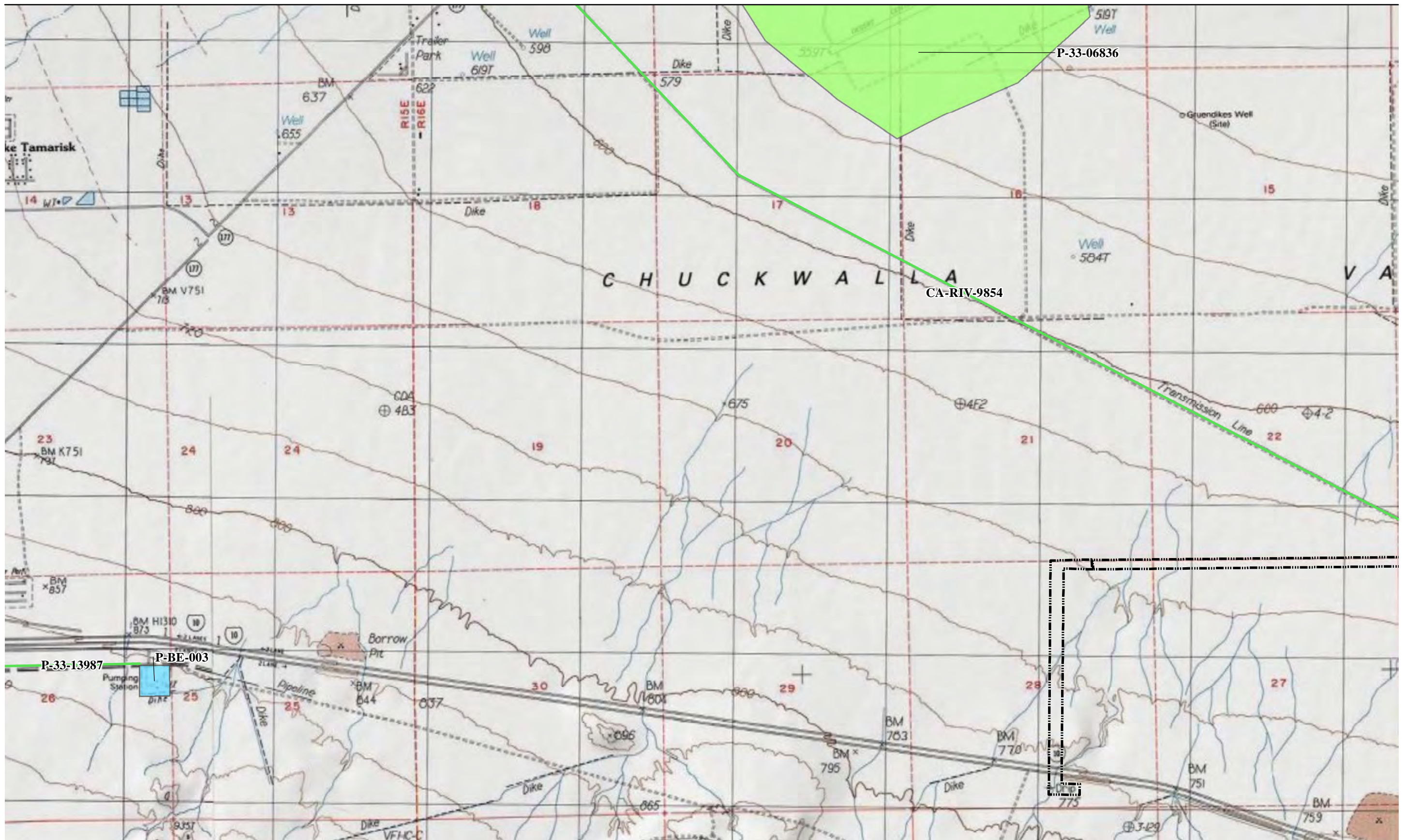


Source: ESRI; AECOM; EIC

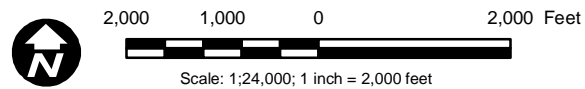


LEGEND		
Built Environment Resources		
	Previously Recorded	
	Newly Identified	
	Bridge	

Figure 2
Palen Solar Electric Generating System Built Environment Resources
 Sheet 27 of 65



Source: ESRI; AECOM; EIC

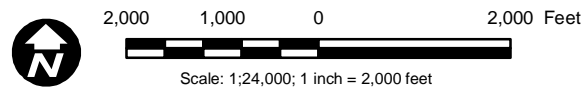


LEGEND		
Built Environment Resources		
	Previously Recorded	
	Newly Identified	
		 Bridge

Figure 2
Palen Solar Electric Generating System Built Environment Resources
Sheet 28 of 65

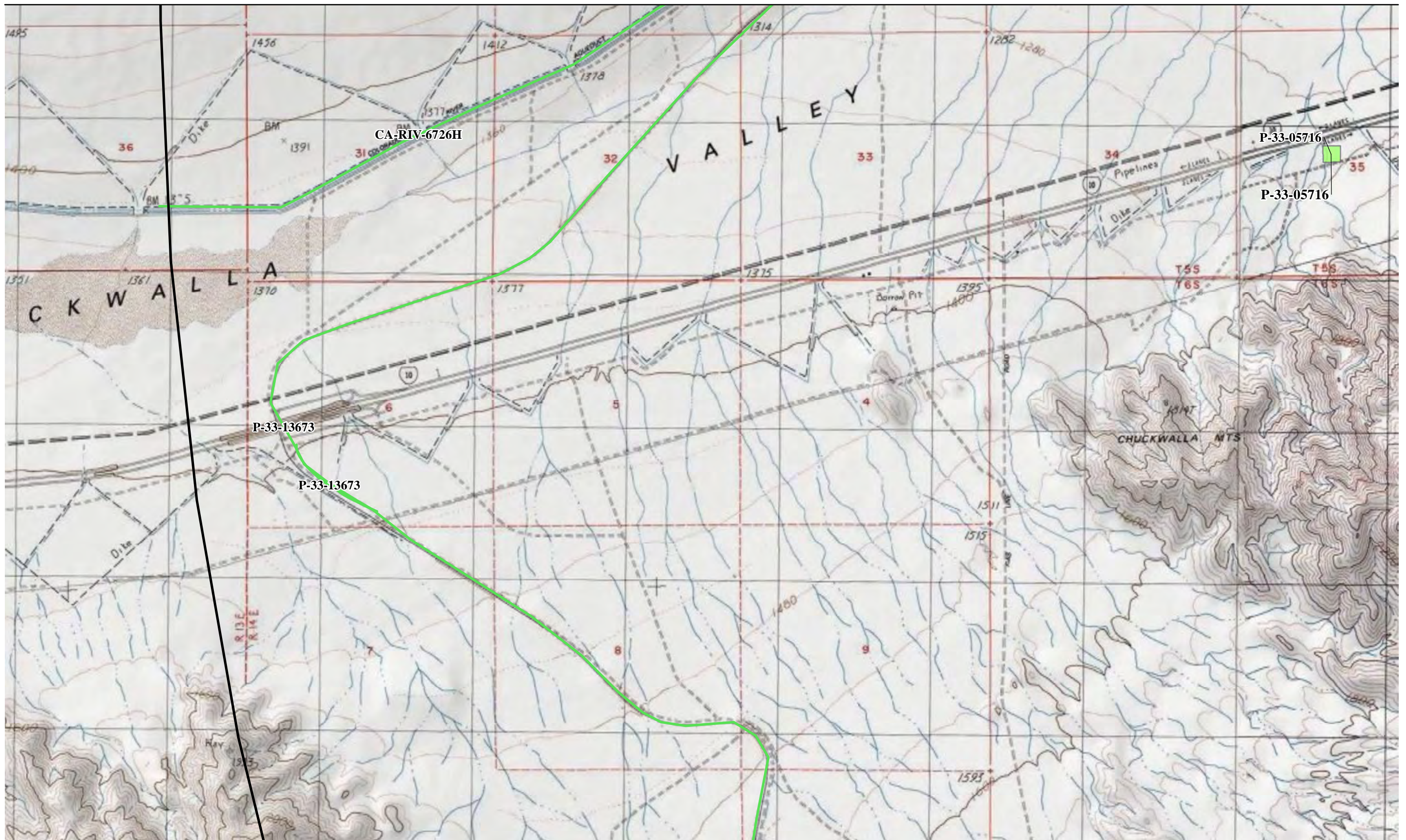


Source: ESRI; AECOM; EIC

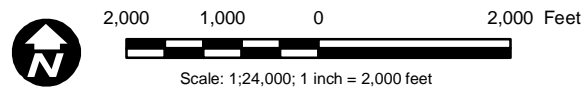


LEGEND		
Built Environment Resources		
	Previously Recorded	
	Newly Identified	
		 Bridge

Figure 2
Palen Solar Electric Generating System Built Environment Resources
 Sheet 29 of 65

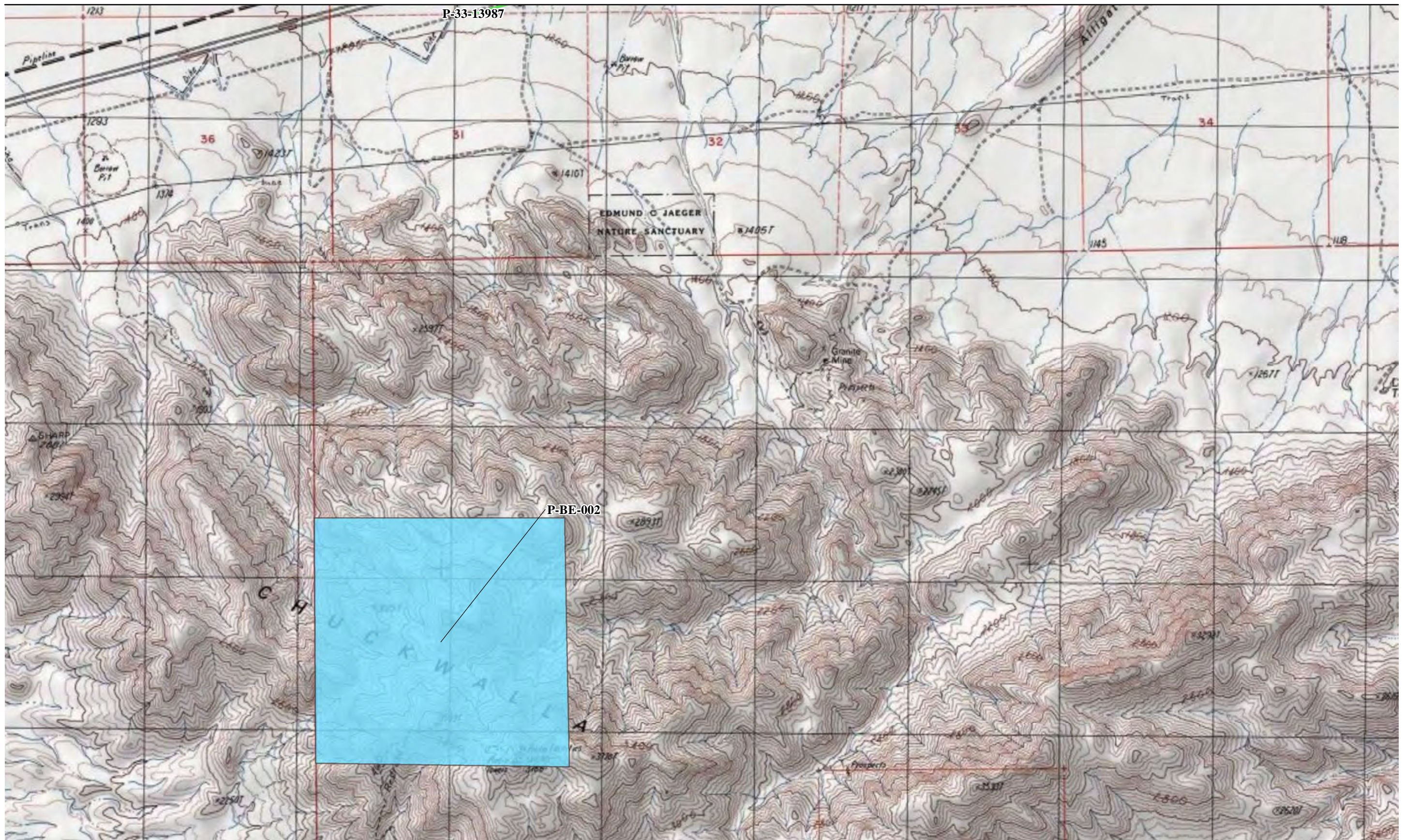


Source: ESRI; AECOM; EIC

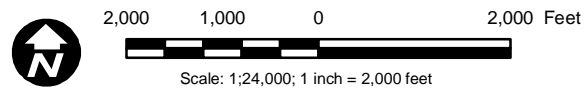


LEGEND		
Built Environment Resources		
█	Previously Recorded	
█	Newly Identified	
●	Bridge	

Figure 2
Palen Solar Electric Generating System Built Environment Resources
Sheet 33 of 65

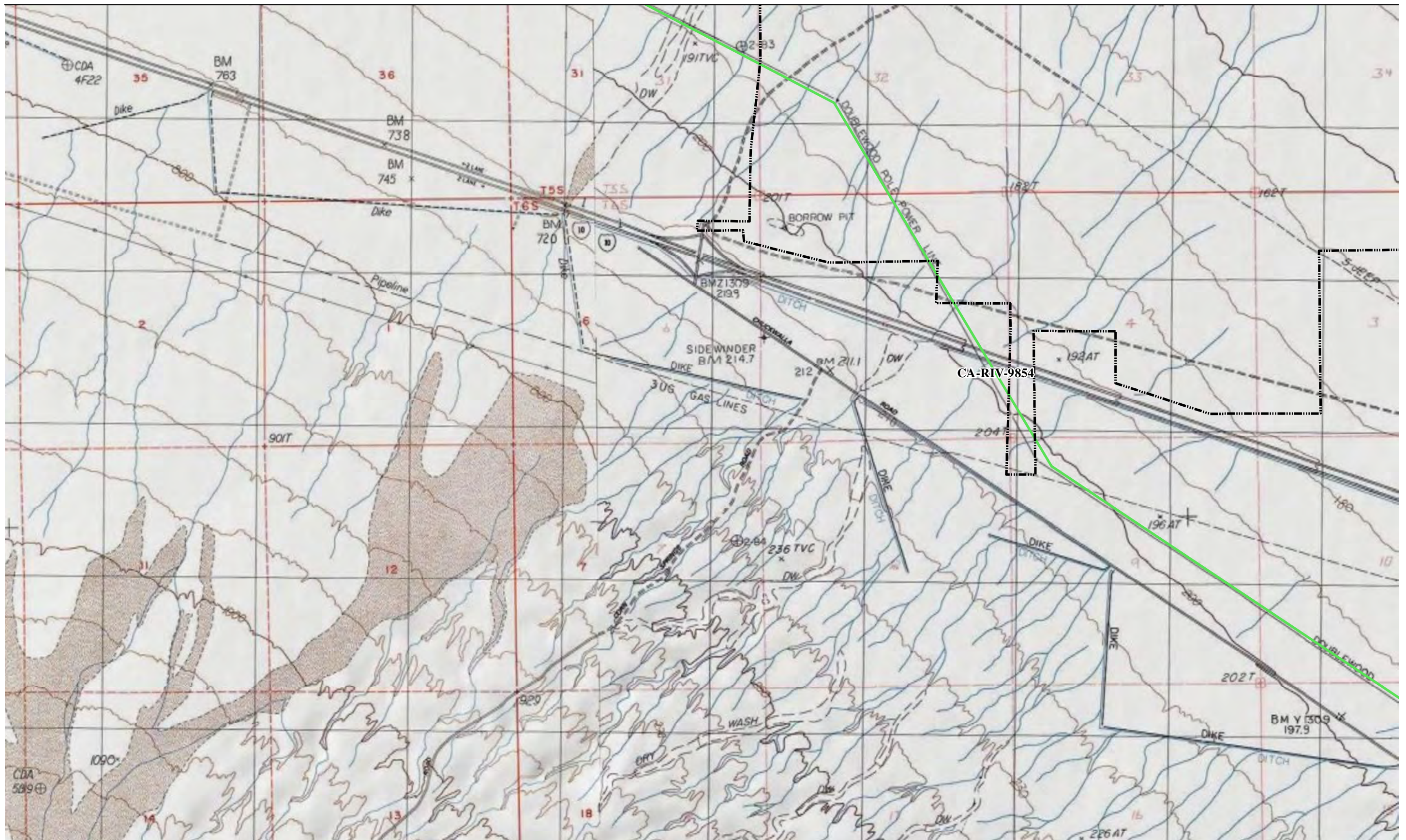


Source: ESRI; AECOM; EIC



LEGEND	
Built Environment Resources	
	Previously Recorded
	Newly Identified
	Bridge

Figure 2
Palen Solar Electric Generating System Built Environment Resources
Sheet 34 of 65



Source: ESRI; AECOM; EIC

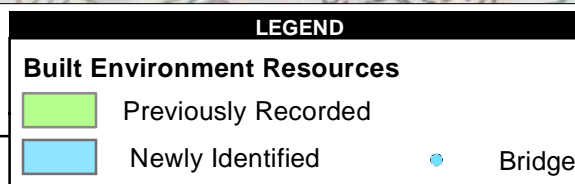
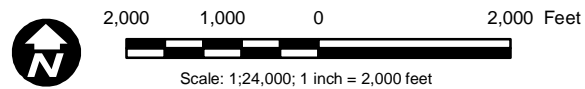
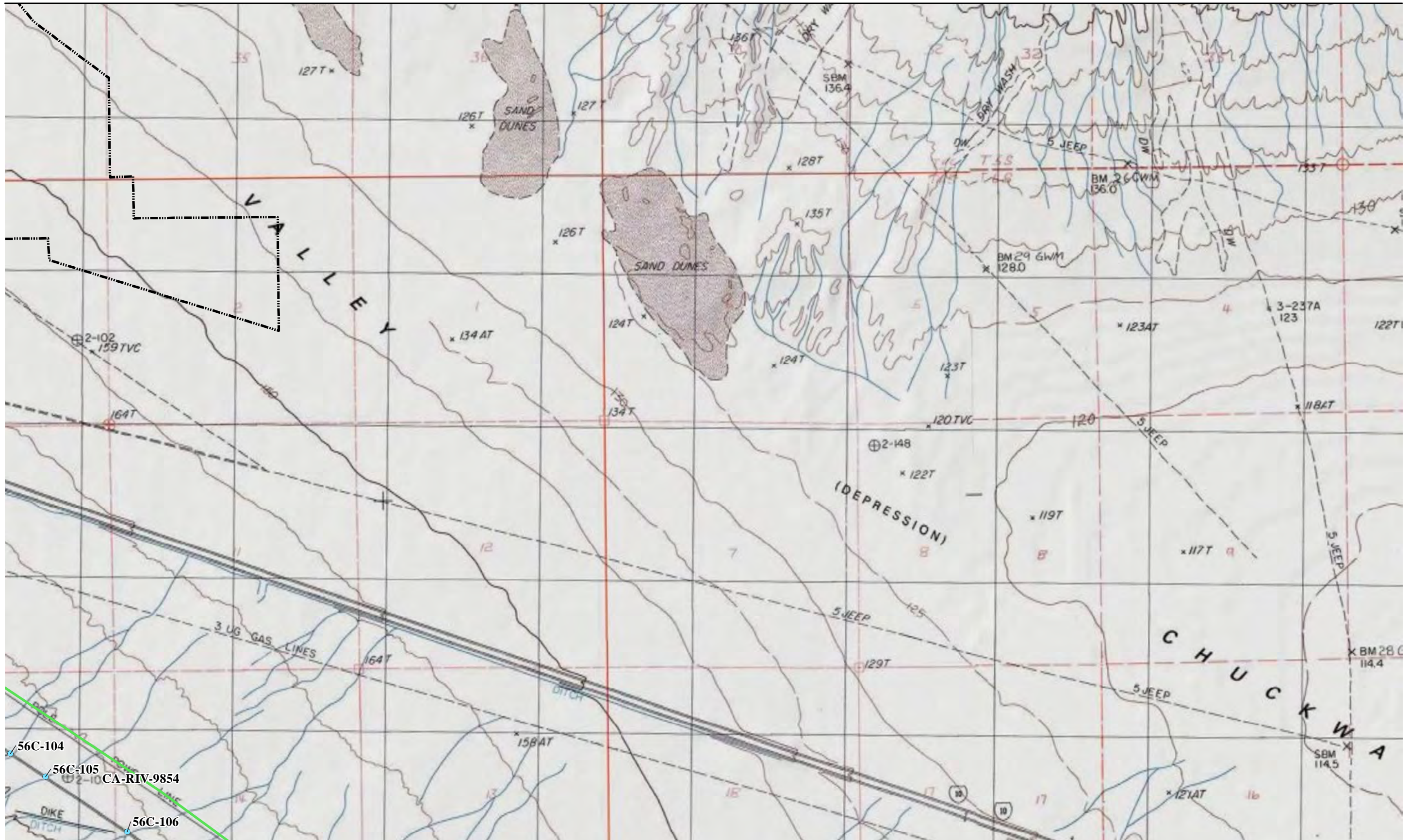
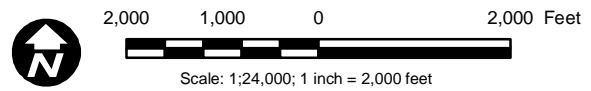


Figure 2
Palen Solar Electric Generating System Built Environment Resources
Sheet 36 of 65



Source: ESRI; AECOM; EIC

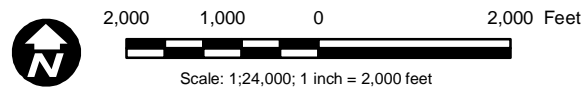


LEGEND		
Built Environment Resources		
	Previously Recorded	
	Newly Identified	
	Bridge	

Figure 2
Palen Solar Electric Generating System Built Environment Resources
Sheet 37 of 65



Source: ESRI; AECOM; EIC

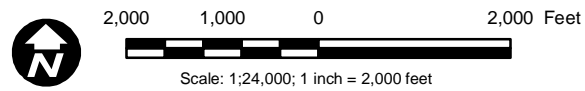


LEGEND	
Built Environment Resources	
█	Previously Recorded
█	Newly Identified
●	Bridge

Figure 2
Palen Solar Electric Generating System Built Environment Resources
Sheet 40 of 65



Source: ESRI; AECOM; EIC

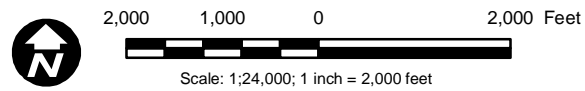


LEGEND	
Built Environment Resources	
	Previously Recorded
	Newly Identified
	Bridge

Figure 2
Palen Solar Electric Generating System Built Environment Resources
Sheet 42 of 65

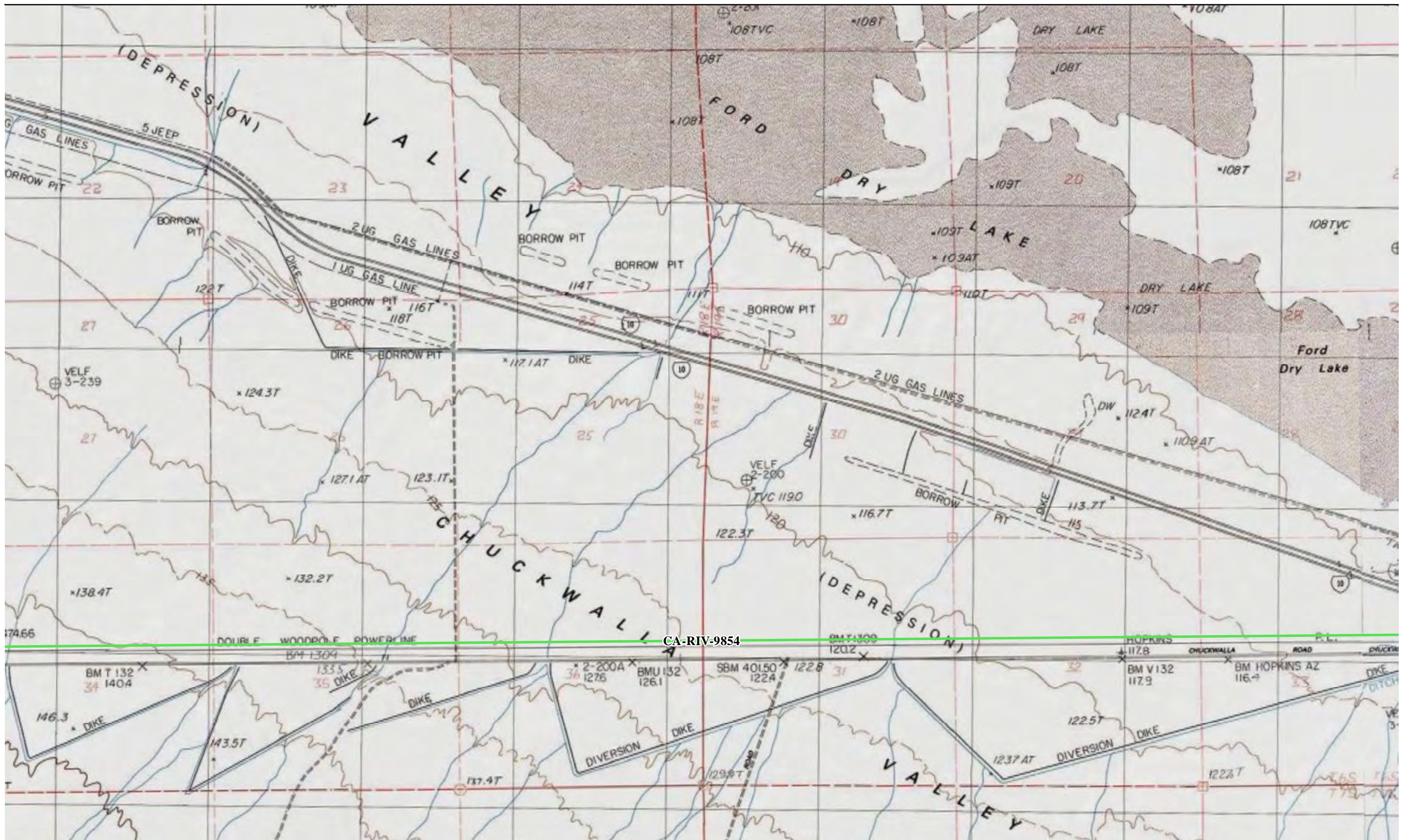


Source: ESRI; AECOM; EIC



LEGEND	
Built Environment Resources	
█	Previously Recorded
█	Newly Identified
●	Bridge

Palen Solar Electric Generating System Built Environment Resources
Figure 2
Sheet 44 of 65



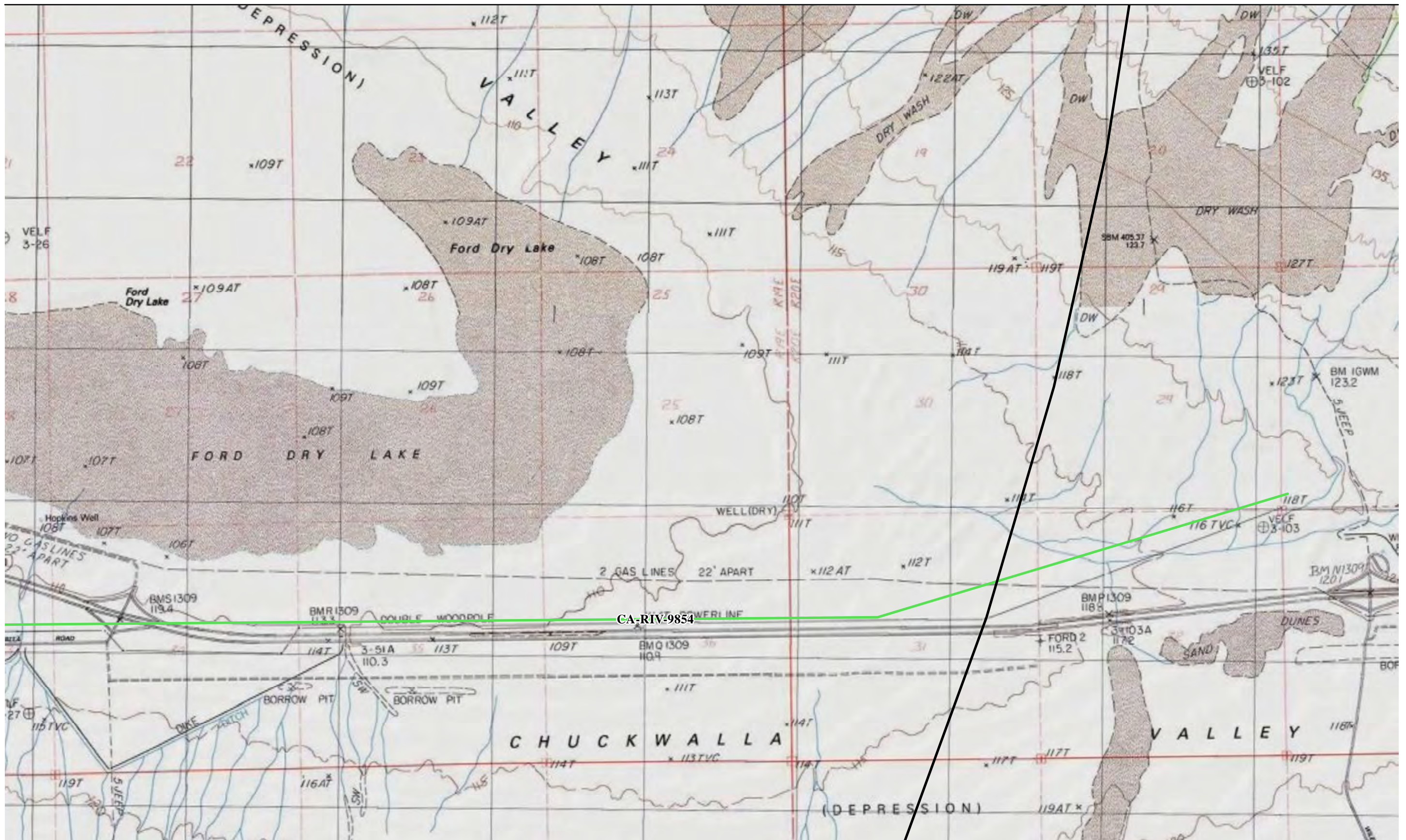
Source: ESRI; AECOM; EIC
 2,000 1,000 0 2,000 Feet
 Scale: 1:24,000; 1 inch = 2,000 feet

LEGEND

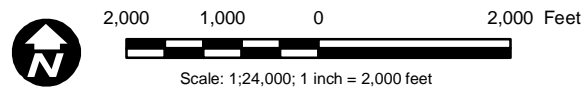
Built Environment Resources

- Previously Recorded
- Newly Identified
- Bridge

Figure 2
Palen Solar Electric Generating System Built Environment Resources
 Sheet 45 of 65

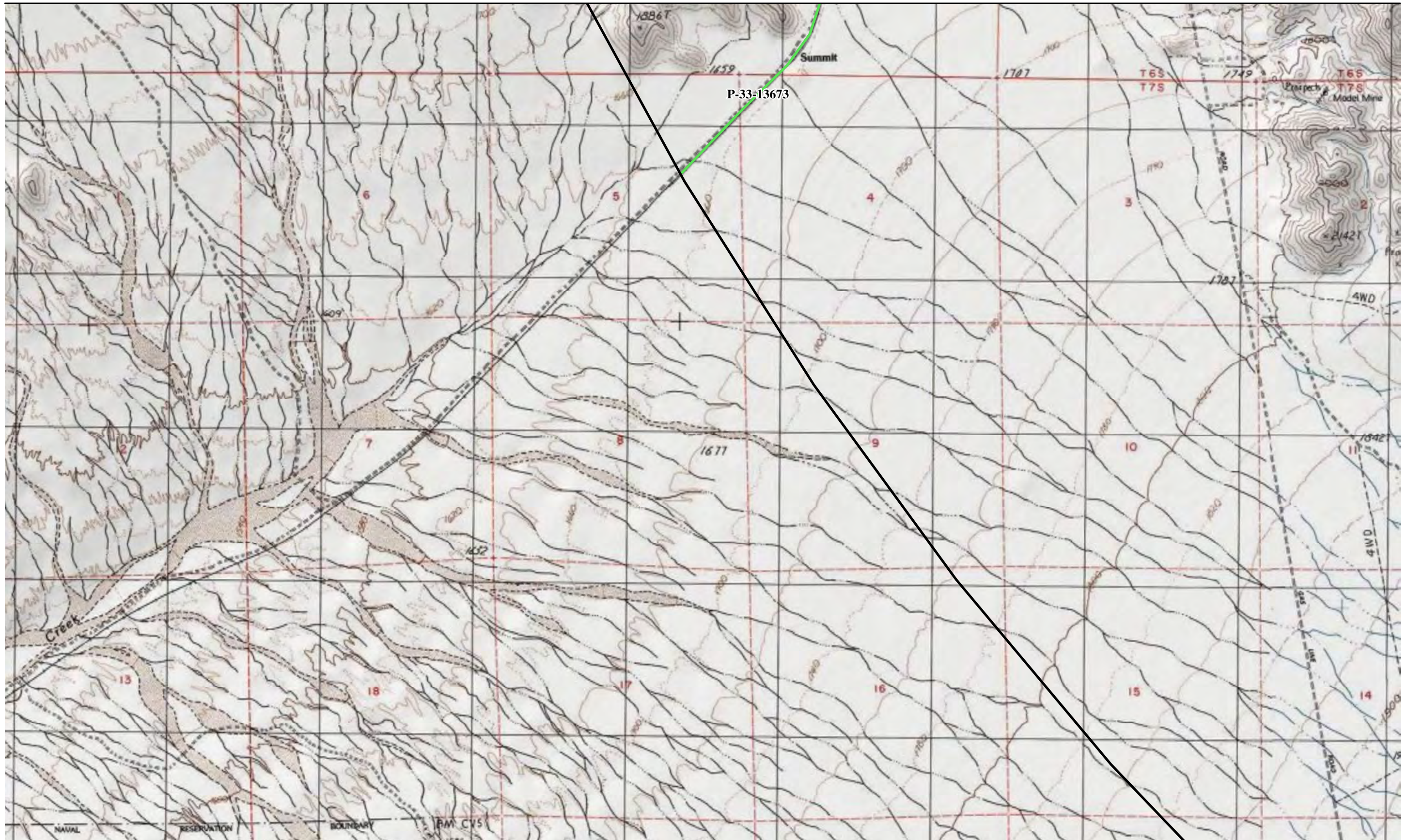


Source: ESRI; AECOM; EIC



LEGEND		
Built Environment Resources		
█	Previously Recorded	
█	Newly Identified	
		● Bridge

Figure 2
Palen Solar Electric Generating System Built Environment Resources
Sheet 46 of 65



Source: ESRI; AECOM; EIC
 2,000 1,000 0 2,000 Feet
 Scale: 1:24,000; 1 inch = 2,000 feet

LEGEND	
Built Environment Resources	
	Previously Recorded
	Newly Identified
	Bridge

Figure 2
Palen Solar Electric Generating System Built Environment Resources
Sheet 47 of 65