

## DOCKETED

<b>Docket Number:</b>	09-AFC-07C
<b>Project Title:</b>	Palen Solar Power Project - Compliance
<b>TN #:</b>	200014
<b>Document Title:</b>	Figure 2-PSH LLC's Final Sand Transport Study
<b>Description:</b>	N/A
<b>Filer:</b>	Tiffani Winter
<b>Organization:</b>	Marie Fleming, Applicant's Counsel
<b>Submitter Role:</b>	Applicant's Representative
<b>Submission Date:</b>	7/23/2013 6:06:16 PM
<b>Docketed Date:</b>	7/23/2013

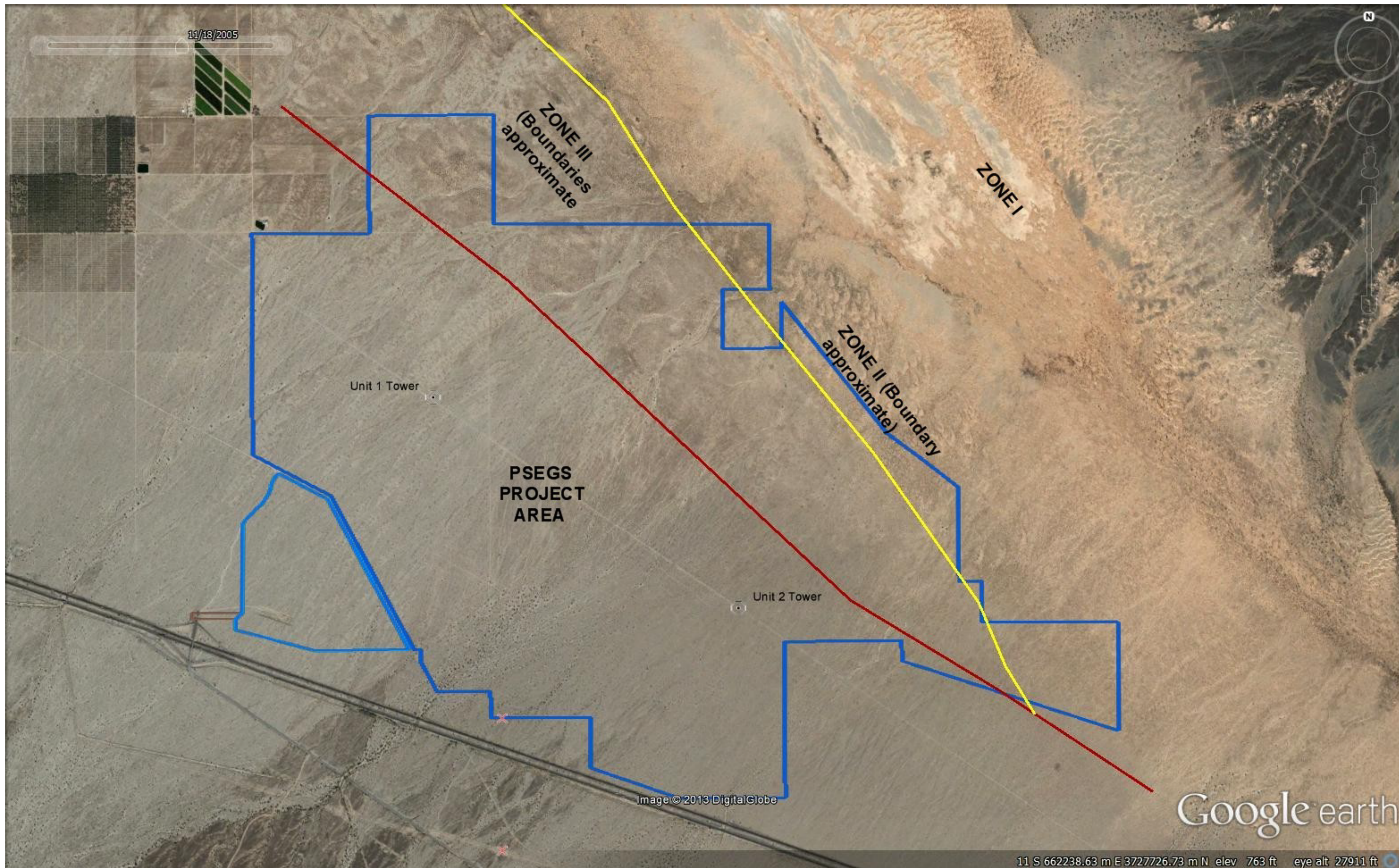


Figure 2. 2005 Google Earth image showing the PSEGS Project area and a portion of the Chuckwalla sand corridor (CSC). Boundary lines between CSC zones are only approximated in this diagram in order to not obscure changes in albedo, vegetation, drainage density, sediment color, and landforms that define each of the major zones. Boundaries between Zone II and I and between Zones III and IV are not shown. Erosional features in Zone III will be shown in more detail in other figures. Note the general absence of active dunes in Zone III.