

DOCKETED

Docket Number:	08-AFC-09C
Project Title:	Palmdale Energy Project (Formerly Palmdale Hybrid Power Plant) - Compliance
TN #:	210783
Document Title:	Palmdale Energy LLC's Revised One-Line Drawing No. A01 Revision E
Description:	N/A
Filer:	Marie Fleming
Organization:	DayZen LLC
Submitter Role:	Applicant Representative
Submission Date:	3/18/2016 3:17:46 PM
Docketed Date:	3/18/2016

Palmdale Energy Center

STG1
 20kV, 3PH, 60HZ
 3600RPM, 0.85PF
 314MVA Max

GTG 1
 18kV, 3PH, 60HZ
 3600RPM, 0.85PF
 305MVA Max

GTG 2
 18kV, 3PH, 60HZ
 3600RPM, 0.85PF
 305MVA Max

20-230kV
 228/304/380MVA
 z = 9% on
 228MVA Base

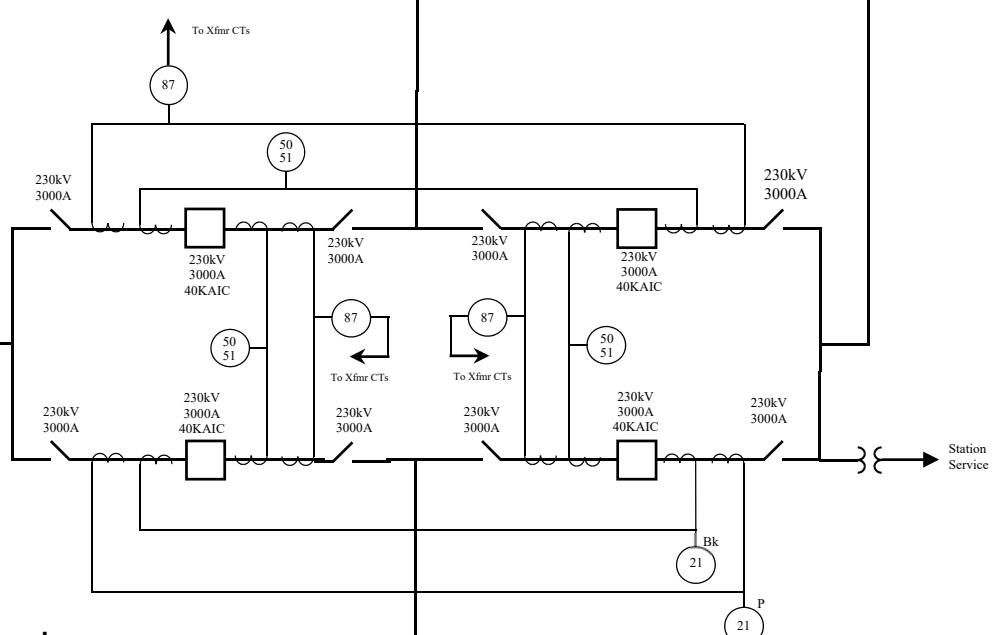
18-230kV
 180/240/300MVA
 z = 9% on
 180MVA Base

18-230kV
 180/240/300MVA
 z = 9% on
 180MVA Base

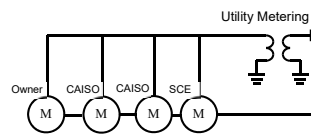
230kV
 2000A

230kV
 2000A

230kV
 2000A



New 230kV Switchyard



35.6 Miles

230kV Line
 to SCE
 Vincent Substation



DATE: 03/17/16
 REV: E

SUMMIT POWER
Palmdale Energy Center
ONE-LINE

DWG NO
A01