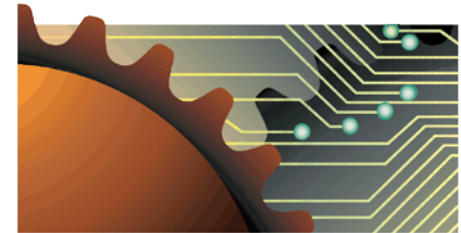


DOCKETED

Docket Number:	17-IEPR-11
Project Title:	Southern California Energy Reliability
TN #:	217647
Document Title:	Joint Agency Workshop on Energy Reliability in Southern California
Description:	Presentation by Dorothy Rothrock of California Manufacturers & Technology Association
Filer:	Patty Paul
Organization:	California Manufacturers & Technology Association
Submitter Role:	Public
Submission Date:	5/19/2017 11:43:59 AM
Docketed Date:	5/19/2017

Joint Agency Workshop on Energy Reliability in Southern California

May 22, 2017



C A L I F O R N I A
M A N U F A C T U R E R S
& T E C H N O L O G Y
A S S O C I A T I O N

Dorothy Rothrock

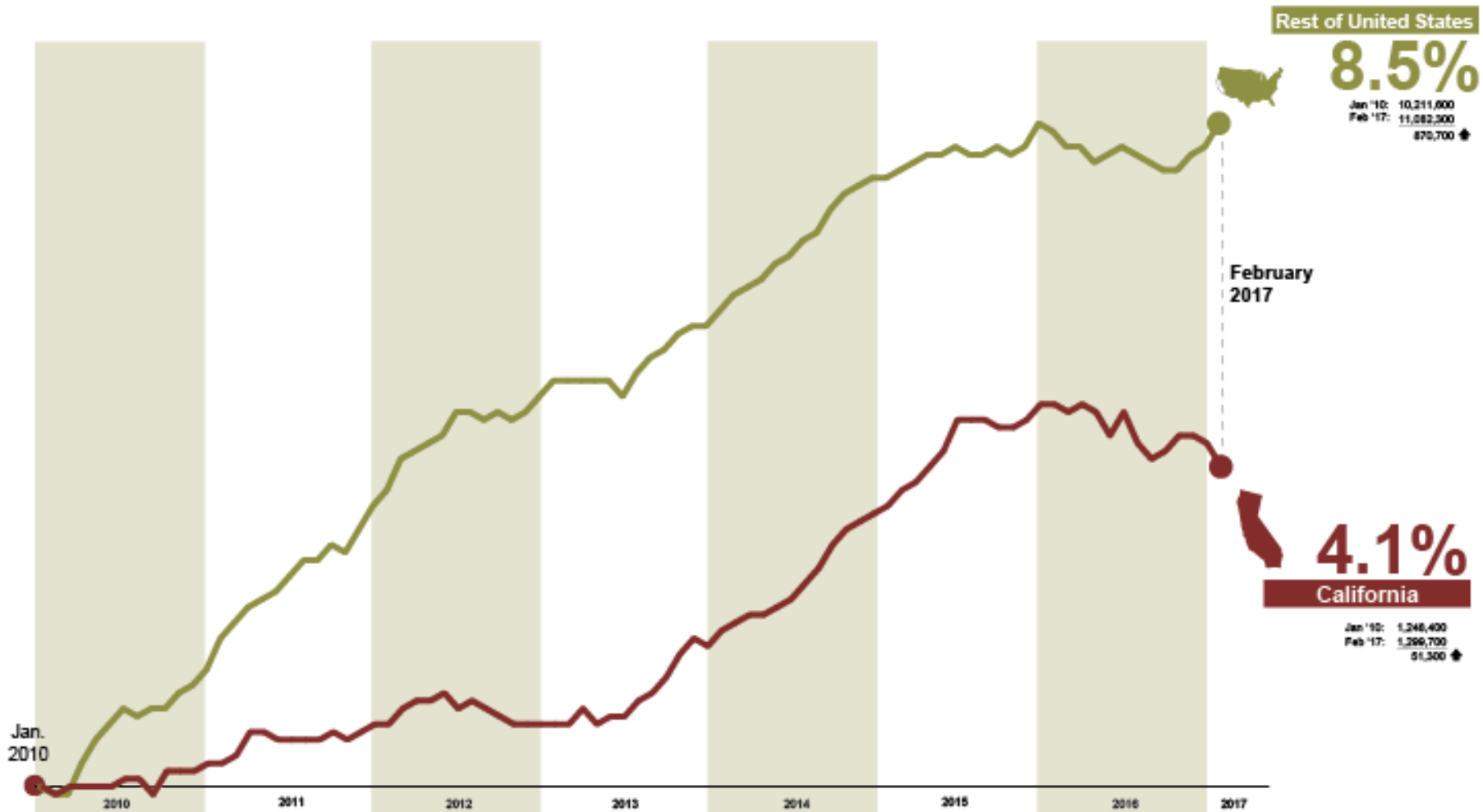
President, CMTA
drothrock@cmta.net

916.498.3319

www.cmta.net

California MFG job growth continues to lag the country

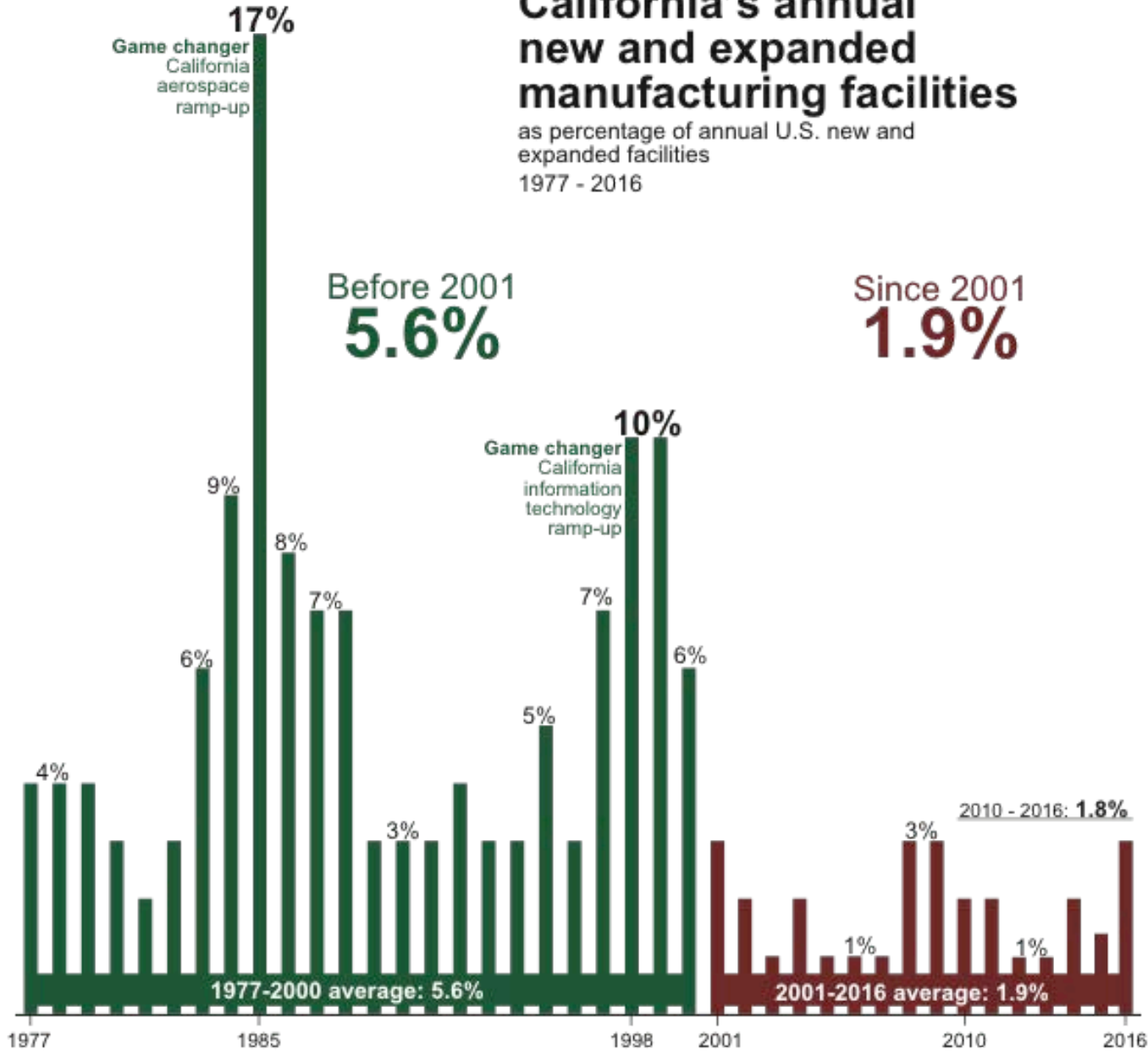
Percent change since 2010



Sources: Labor Market Information Dept, U.S. Bureau of Labor Statistics Chart: CA Manufacturers & Technology Assn. As of March 27, 2017 www.cmta.net

California's annual new and expanded manufacturing facilities

as percentage of annual U.S. new and expanded facilities
1977 - 2016



source : Conway Data, Site Selection Magazine

chart: California Manufacturers & Technology Association www.cmta.net

@cmta

CA electricity cost premium since 2010

Rates: Industrial vs. Commercial vs. Residential

