



CEC IEPR Committee Workshop Transmission Needed to Meet State Renewable Policy Mandates and Goals

California Transmission Planning Group
2010 Statewide Transmission Plan

11-IEP-1E	
DOCKET	
11-IEP-1G	
DATE	<u>May 17 2011</u>
RECD.	<u>May 18 2011</u>



Dr. Mohammed Beshir, CTPG TSC Chair, May 17, 2011

CTPG: Who We Are

- CTPG is a coalition comprised of all the entities within California responsible for transmission planning for the intrastate and interstate grids:
 - Publicly Owned Utilities: IID, TID, SMUD and LADWP
 - California ISO
 - Investor Owned Utilities: PG&E, SCE, and SDG&E
 - Other planning organizations: WAPA, TANC, and SCPPA
- CTPG's role is to coordinate transmission planning studies:
 - NOT a decision-making or approval authority, or development group
- CTPG study process is open and transparent:
 - Assumptions, methods, and results are documented and publicly available (<http://www.ctpg.us/public/index.php>)
 - Conduct stakeholder meetings, and solicits and responds to written comments

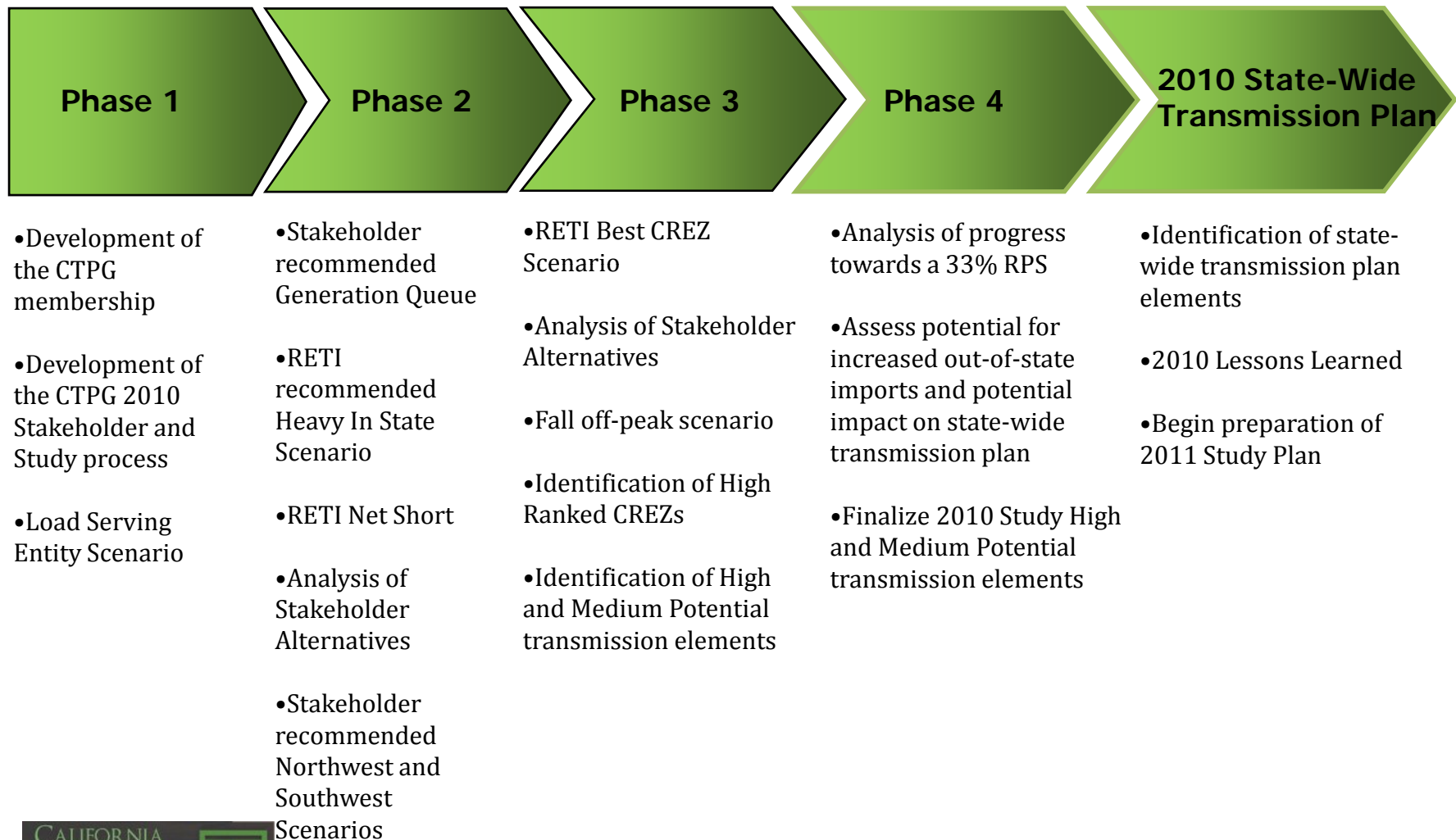
Coordinating Transmission Planning for all of California

- Identify transmission additions and upgrades needed to achieve 33% RPS for California by 2020
- Integrate the delivery of renewable energy to load centers with the reliability and operational needs of the grid
- Benefit from collaborative planning approach that could significantly reduce the economic and environmental costs of achieving a 33% RPS

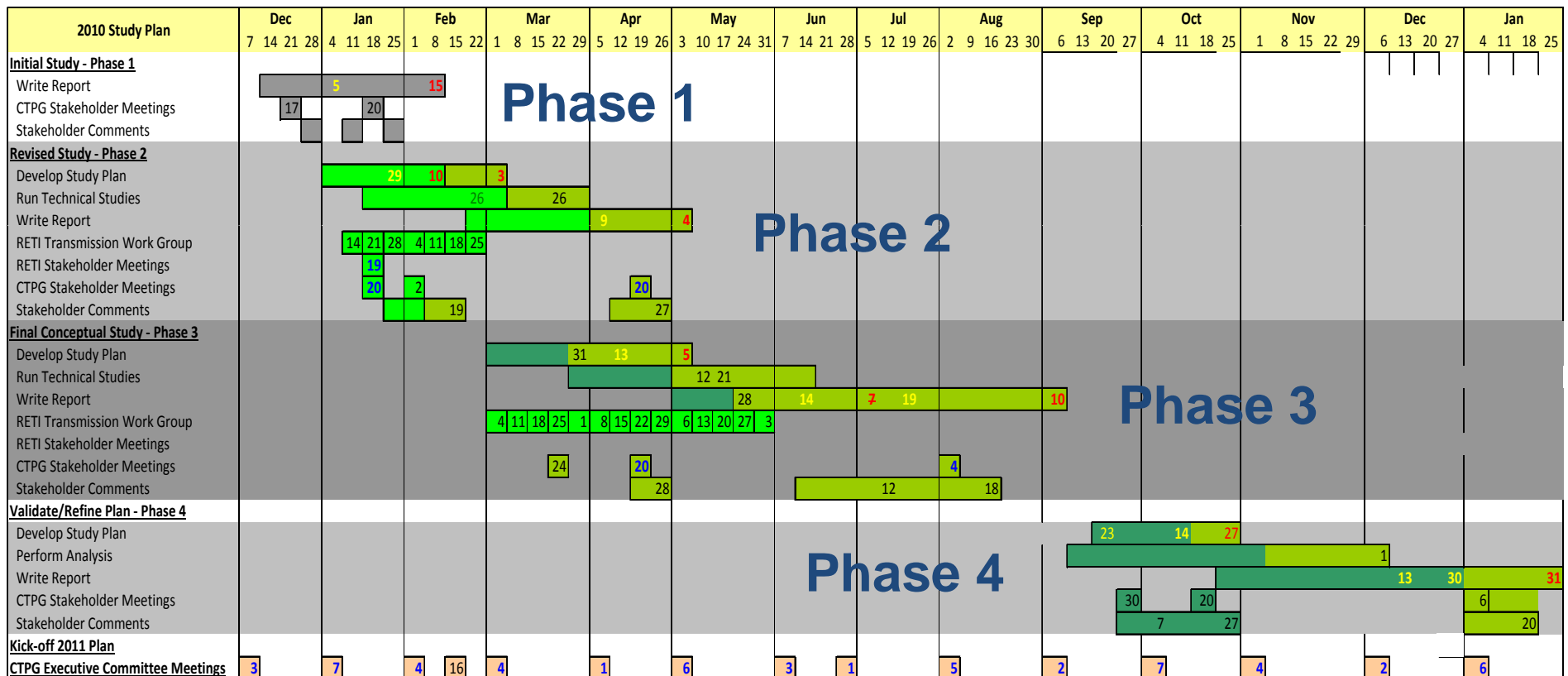
Study Objectives for the 2010 Statewide Transmission Plan

- Complete a statewide conceptual transmission plan by the end of 2010 and vet results with stakeholders
- Conceptual plan based on results of multiple scenarios runs with consideration of how likely each is
- Goal was to identify “high-potential” transmission needs for consideration by state Balancing Authority Areas in early 2011
- Remaining 33% RPS transmission needs subject to further study in 2011

CTPG 2010 Study Process



CTPG 2010 Four-phase Timeline Supported Active Stakeholder Participation



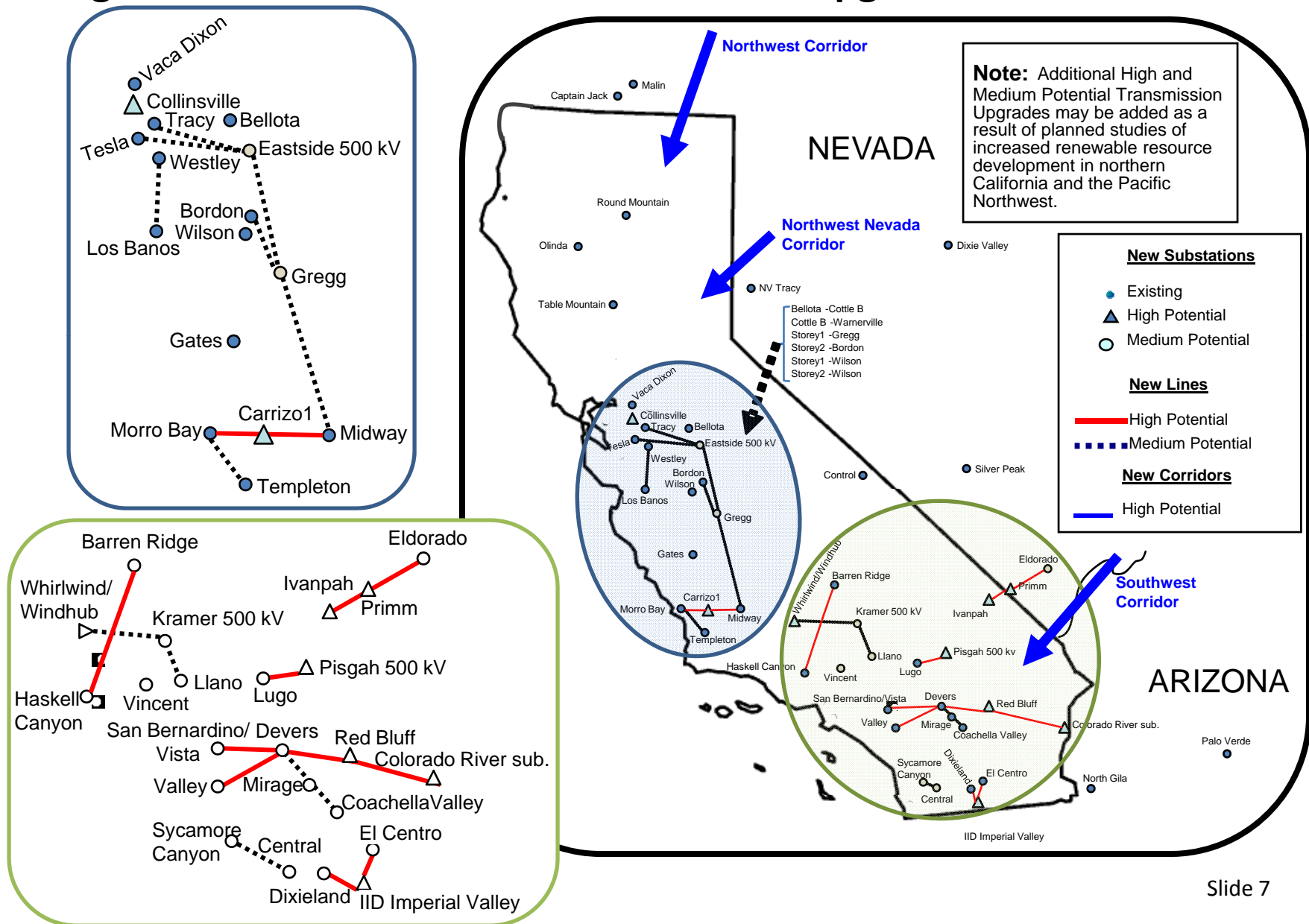
Yellow = Draft

Red = Final

Blue = In person

2010 CTPG Statewide Transmission Plan

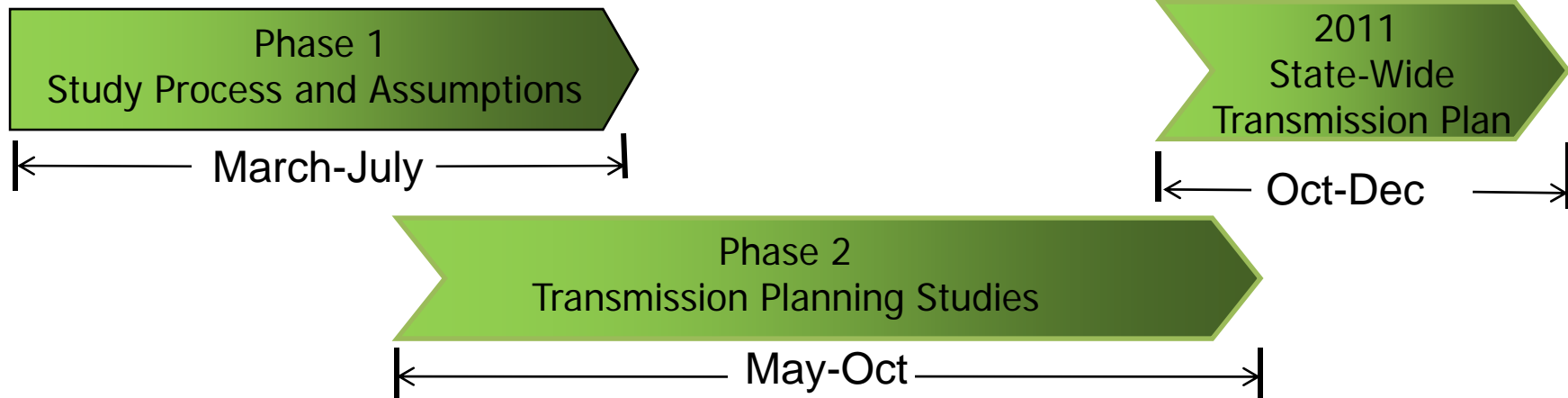
High and Medium Potential Transmission Upgrades and Corridors



CTPG 2010 Statewide Transmission Plan Recommendations

- High Potential Transmission Needs:
 - 26 transmission items
 - Should be focus for transmission project developers, balancing authorities, regulatory bodies, and state agencies
 - Solutions to Needs should be submitted for regulatory approval and environmental authorizations
- Medium Potential Transmission Needs:
 - 34 transmission items
 - Study further in the ongoing transmission planning processes
- High Potential Transmission Corridors:
 - 3 transmission corridors identified
 - Warrant further study by the CTPG in 2011

CTPG 2011 Work Plan



- Prepare Phase I Work Plan
- Determine Base Case Approach
- Verify Existing Renewables
- Incorporate OTC Assumptions
- Review Path Flow Assumptions Prior To Dispatch of Renewables

- Update Net Short
- Review Re-dispatch Methodology
- Review Dynamic Stability Study Approach
- Coordinate with TEPPC

- Prepare Phase II Work Plan
- Develop Renewable Portfolios/Scenarios
- Prepare Study Plan(s)
- Update Renewable Development Information
- Perform Studies
- Refine the Determination of the High and Medium Potential Transmission Needs and Corridors

- Identify 2011 State-Wide Transmission Plan Elements
- Identify 2011 Lessons Learned
- Begin Preparation of 2012 Work Plan

Thank you!