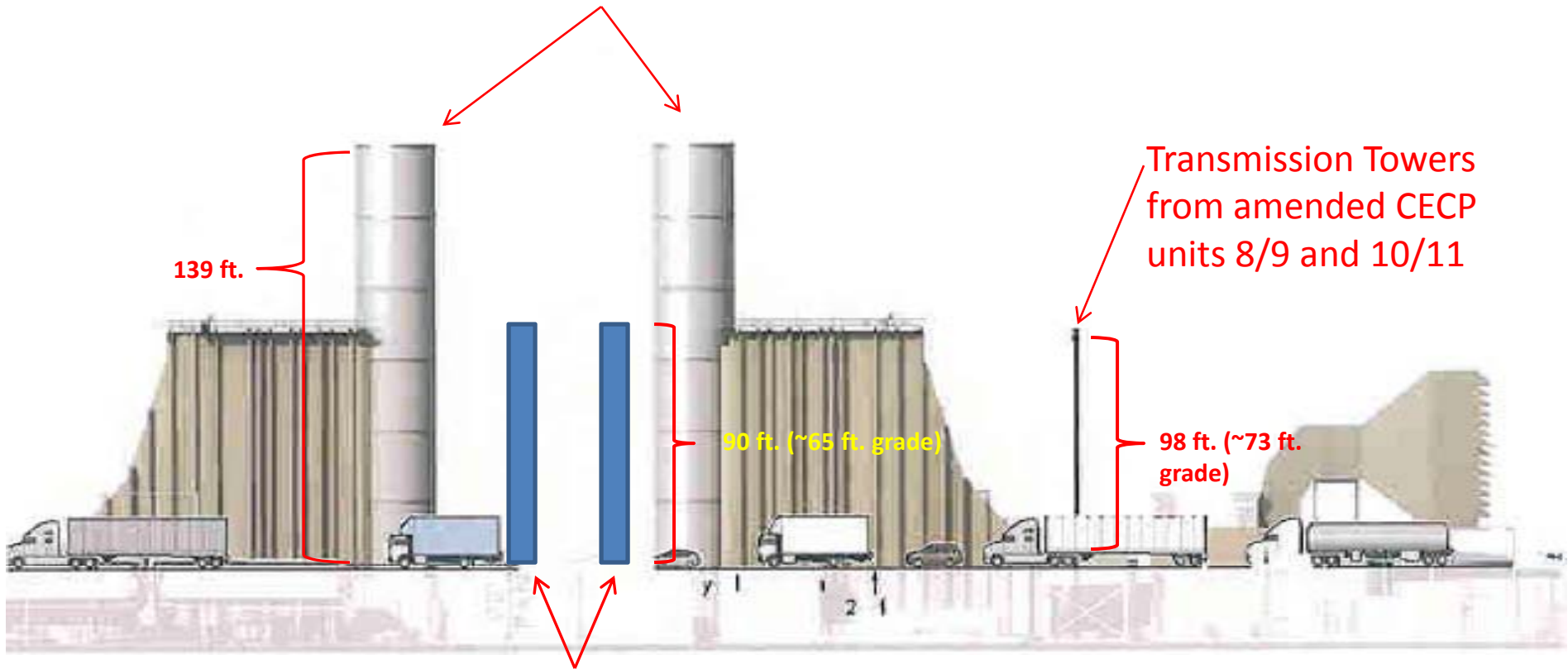


## DOCKETED

<b>Docket Number:</b>	07-AFC-06C
<b>Project Title:</b>	Carlsbad Energy Center - Compliance
<b>TN #:</b>	204038
<b>Document Title:</b>	Visual Resources Presentation by Staff, Evidentiary Hearings, 4/1/15
<b>Description:</b>	Slides 1-9 from Exhibits 200, 4012, Officially Noticed Exhibit 433; Slides 11-19 from Staff Rebuttal Testimony, Exhibit 203
<b>Filer:</b>	Jon Hilliard
<b>Organization:</b>	California Energy Commission
<b>Submitter Role:</b>	Commission Staff
<b>Submission Date:</b>	4/1/2015 1:00:16 PM
<b>Docketed Date:</b>	4/1/2015

Amended CECP Visual Resources  
Amended CECP Evidentiary Hearings  
April 1, 2015

Licensed CECP exhaust stack / visual profile



139 ft.

90 ft. (~65 ft. grade)

Transmission Towers from amended CECP units 8/9 and 10/11

98 ft. (~73 ft. grade)

Amended CECP exhaust stack

**AMENDED CECP VISUAL IMPACT SUMMARY**

<b>KOP</b>		Overall Visual Sensitivity	Overall Visual Change	Significance?	w/ Mitigation (VIS-1, VIS-2)
------------	--	----------------------------	-----------------------	---------------	------------------------------

**BEACH/CARLSBAD BLVD. VIEWSHED**

<b>1</b>	Carlsbad Blvd.	H	ML	LTS; B (Phase IV)	LTS/B
----------	----------------	---	----	----------------------	-------

**LAGOON VIEWSHED**

<b>2</b>	Capri Park/Pannonia Trail	MH	M	PS	LTS
<b>3</b>	Cove Drive	H	M	PS	LTS
<b>3A</b>	Adams St.	H	M	PS	LTS
<b>4</b>	Hoover St.	H	L	LTS	LTS
<b>5</b>	Harbor Dr.	H	L	LTS	LTS

**I-5 VIEWSHED**

<b>6, 6A</b>	SB I-5 (6A missing - errata)	MH, M	L, M	LTS	LTS
<b>7, 7A</b>	NB I-5	M, M	M, M	LTS	LTS

**OTHER**

<b>8</b>	(Carlsbad Blvd.) not included	H	ML	LTS	LTS
<b>9</b>	Rail Corridor lking. East	M	ML	LTS	LTS
<b>10</b>	(EPA Site) not provided	MH	L	LTS	LTS
<b>11</b>	Rail Corridor lking. South	M	ML	LTS	LTS



Baseline view from the Pannonia Trail toward the project site with the licensed CECP in place.

**Figure 5.13-3A**  
**KOP 2 – View from Pannonia Trail**  
**at Capri Park – Baseline Conditions**  
*Carlsbad Energy Center Project*  
*Carlsbad, California (07-AFC-06)*  
*Petition to Amend – Amendment No. 2*

Exhibit 200





View from the Pannonia Trail toward the project site with the Amended Project power generation and transmission facilities in place, before removal of the Encina Power Station.

**Figure 5.13-3B**  
**KOP 2 – View from Pannonia Trail at**  
**Capri Park – Amended Project before**  
**Removal of the Encina Power Station**  
*Carlsbad Energy Center Project*  
*Carlsbad, California (07-AFC-06)*  
*Petition to Amend – Amendment No. 2*

Staff FSA, Exhibit FSA



View from the Pannonia Trail toward the project site with the Amended Project in place, including removal of the Encina Power Station.

**Figure 5.13-3C**  
**KOP 2 – View from Pannonia Trail at**  
**Capri Park – Amended Project with**  
**Removal of the Encina Power Station**  
*Carlsbad Energy Center Project*  
*Carlsbad, California (07-AFC-06)*  
*Petition to Amend – Amendment No. 2*





Simulated with-project view looking southbound on I-5, north of the proposed transmission structure associated with the proposed Units 8 and 9 transformers depicting the revised design of the project transmission system.

POV Exhibit 4012

**Figure DR POV 5-2 Revised**  
Southbound View From I-5 Looking Toward the  
Transmission Structure Proposed to Serve Units 8 and 9  
Carlsbad Energy Center Project  
Carlsbad, California (07-AFC-06)  
Petition to Amend





Simulated with-project view looking northbound on I-5, south of the proposed transmission structure associated with the proposed Units 8 and 9 transformers depicting the revised design of the project transmission system.

POV Exhibit 4012

**Figure DR POV 5-3 Revised**  
**Northbound View From I-5 Looking Toward**  
**Transmission Structure Proposed to Serve Units 8 and 9**  
*Carlsbad Energy Center Project*  
*Carlsbad, California (07-AFC-06)*  
*Petition to Amend*



B. View toward the project site from Northbound I-5 north of Cannon Road with the Amended Project in place.

**Figure DR58-9**  
**KOP 7 – View from Northbound I-5 North of Cannon Road**  
*Carlsbad Energy Center Project*  
*Carlsbad, California (07-AFC-06C)*  
*Petition to Amend*

# Cumulative I-5 Impacts

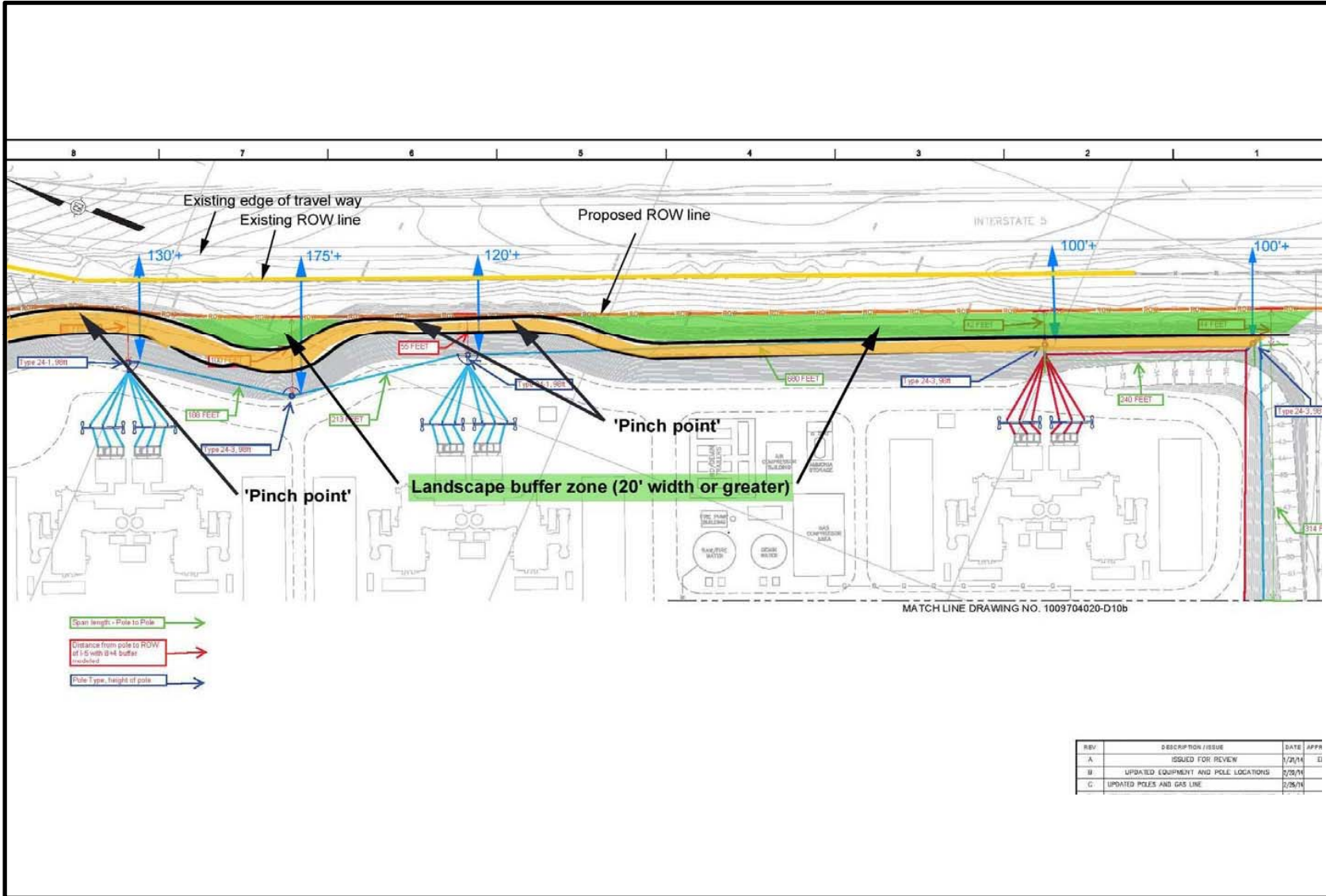
following Figures from  
Staff Rebuttal Testimony

Filed 3/27/15

Exhibit 203

### VISUAL RESOURCES - FIGURE 1

Carlsbad Energy Center Project Amendment - Proposed amended CECP with Condition of Certification VIS-5



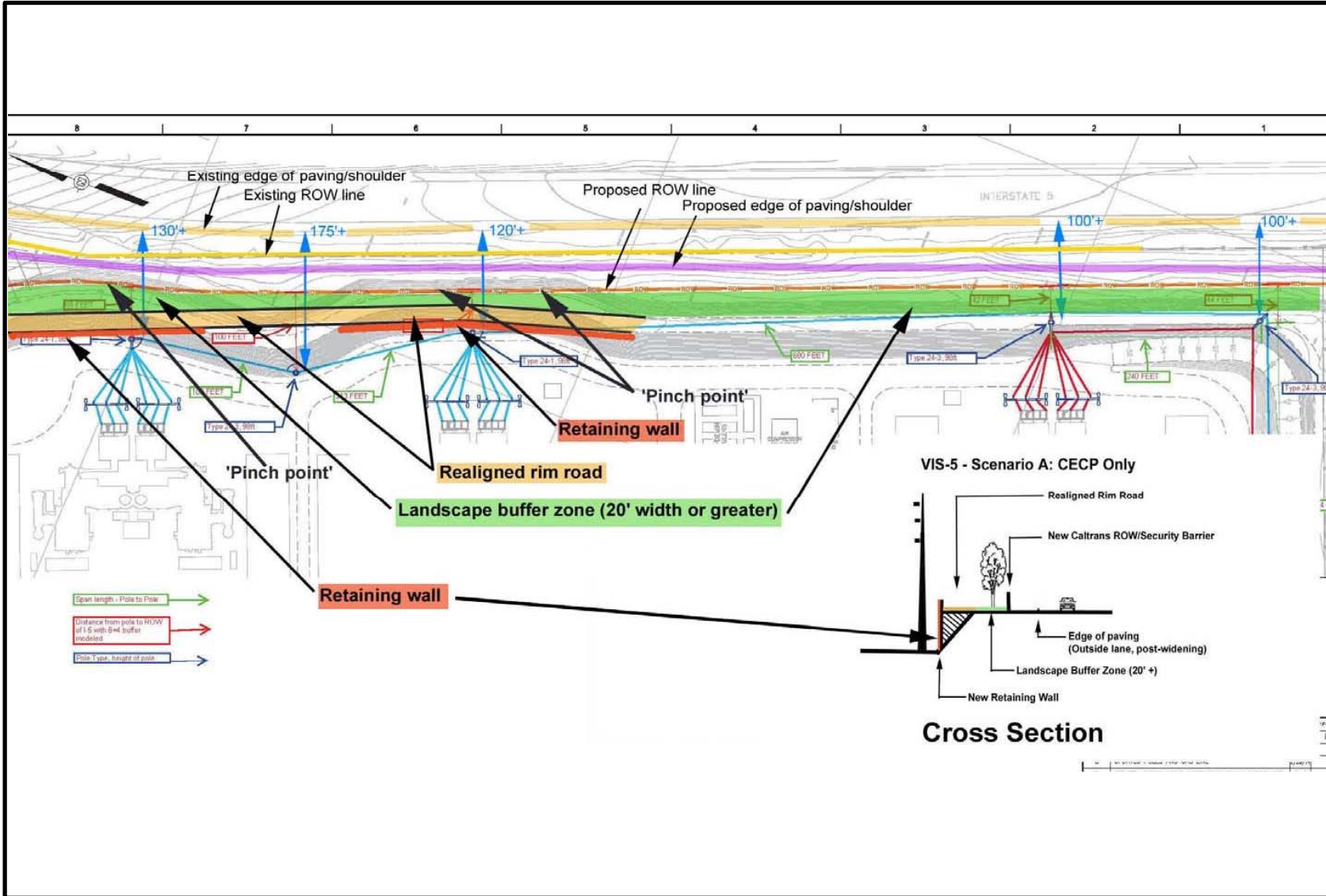
REV	DESCRIPTION / ISSUE	DATE	APP
A	ISSUED FOR REVIEW	1/20/14	EL
B	UPDATED EQUIPMENT AND POLE LOCATIONS	2/20/14	
C	UPDATED POLES AND GAS LINE	2/26/14	

VISUAL  
RESOURCES



### VISUAL RESOURCES - FIGURE 2

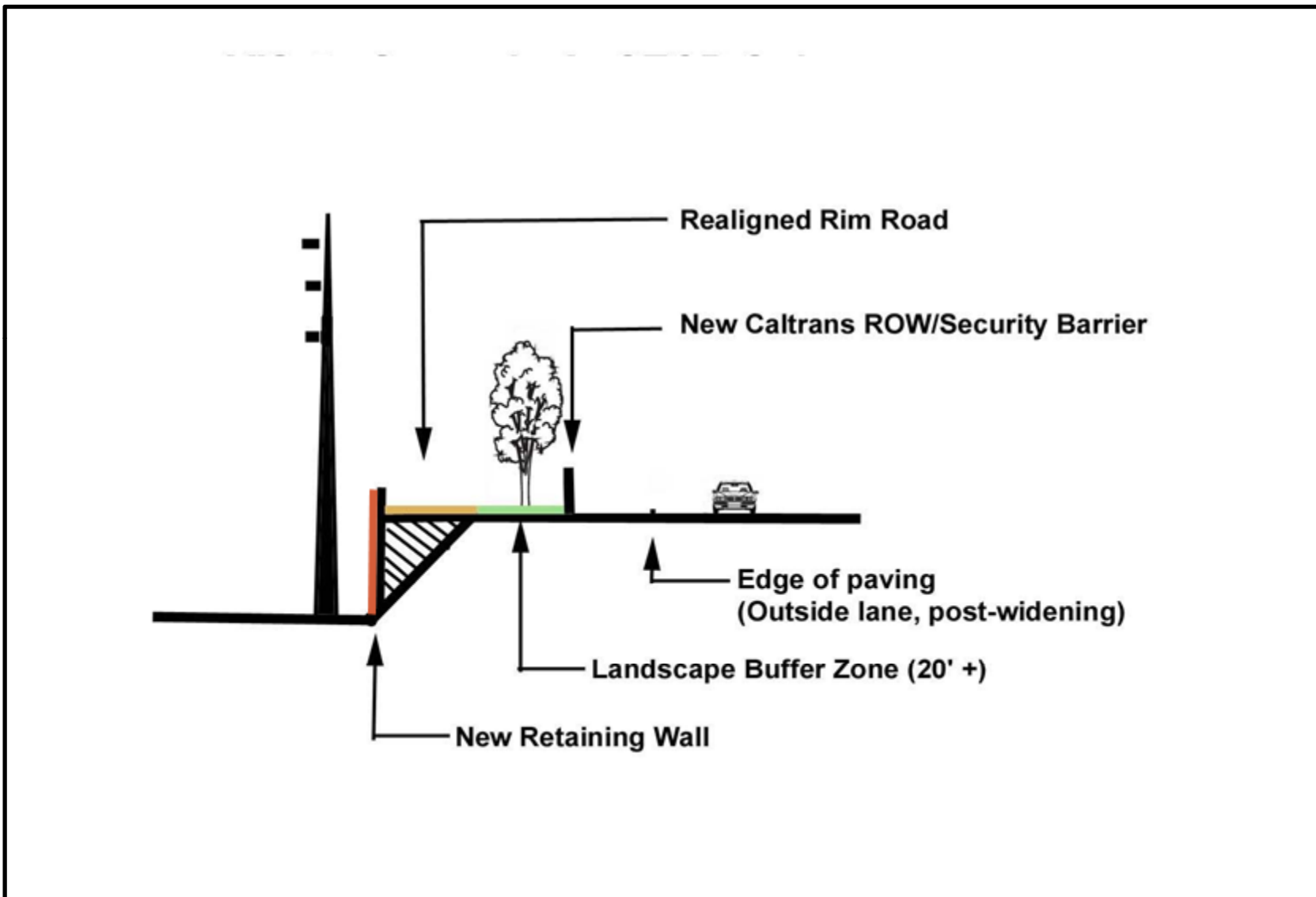
Carlsbad Energy Center Project Amendment - Condition VIS-5, **Scenario A** (CECP Site Only)



VISUAL  
RESOURCES

VISUAL RESOURCES - FIGURE 3

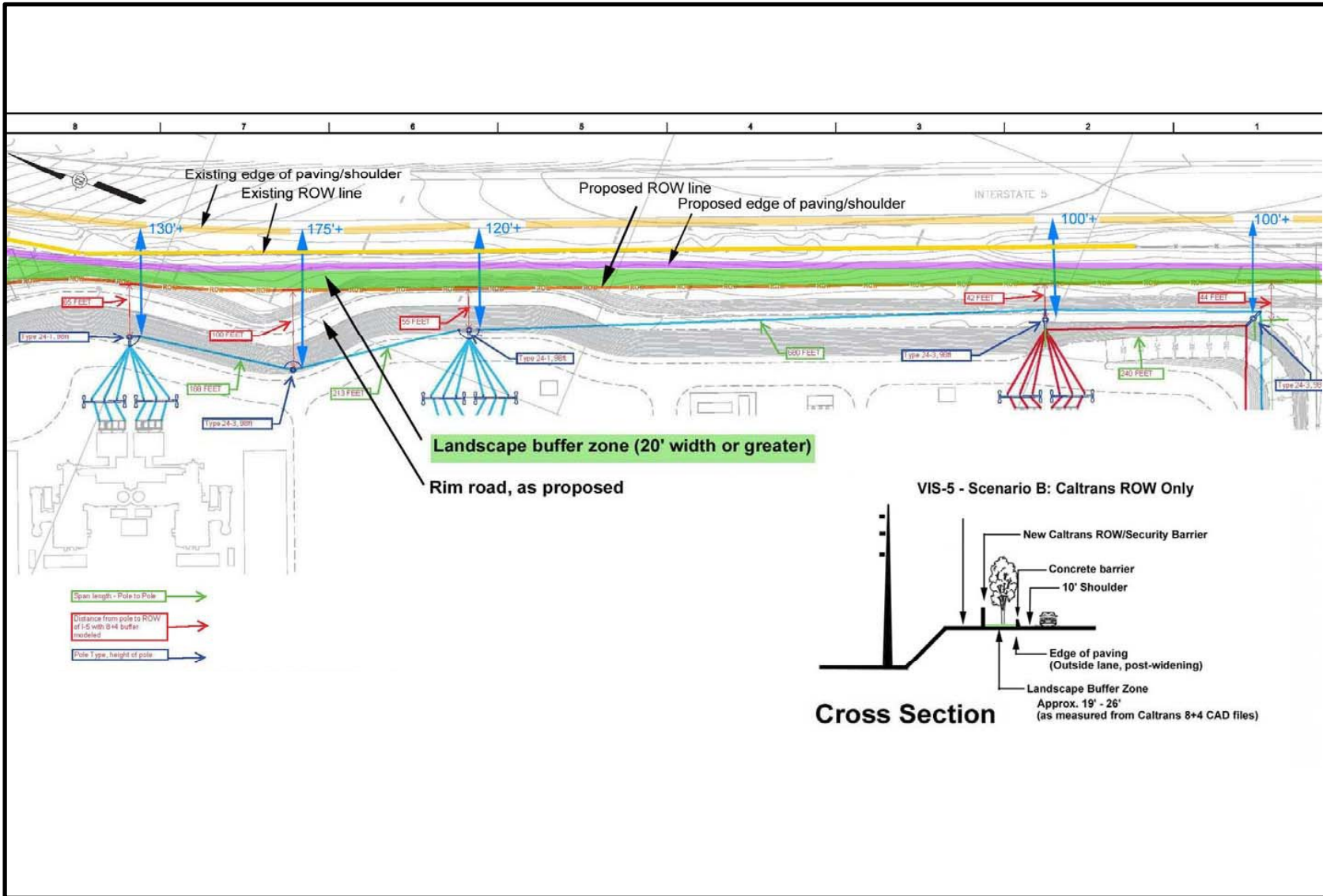
Carlsbad Energy Center Project Amendment - Conceptual Cross-Section, Condition VIS-5, **Scenario A**



VISUAL  
RESOURCES

**VISUAL RESOURCES - FIGURE 4**

Carlsbad Energy Center Project Amendment - Condition VIS-5, **Scenario B** (Caltrans ROW Only)



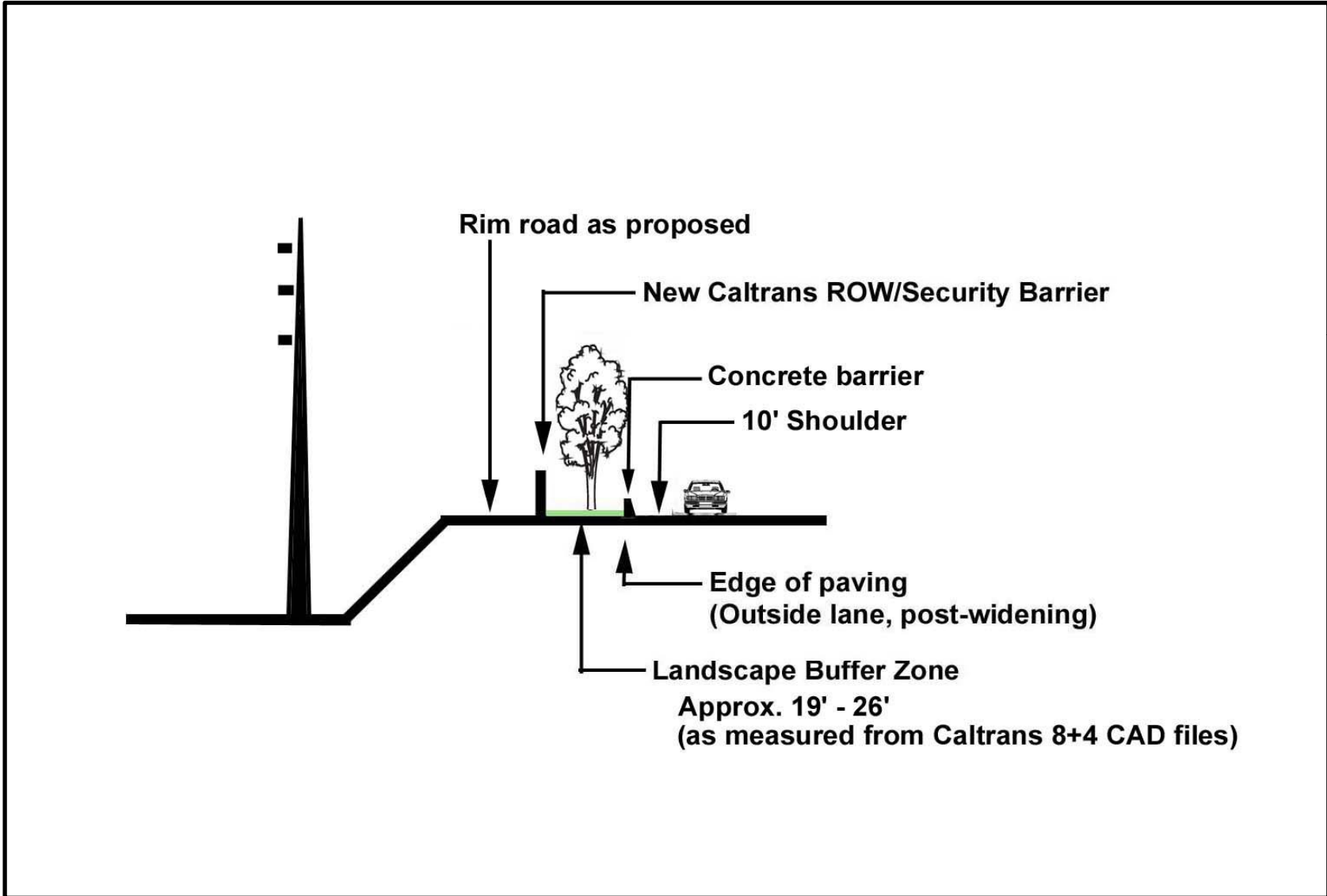
VISUAL  
RESOURCES





**VISUAL RESOURCES - FIGURE 5**

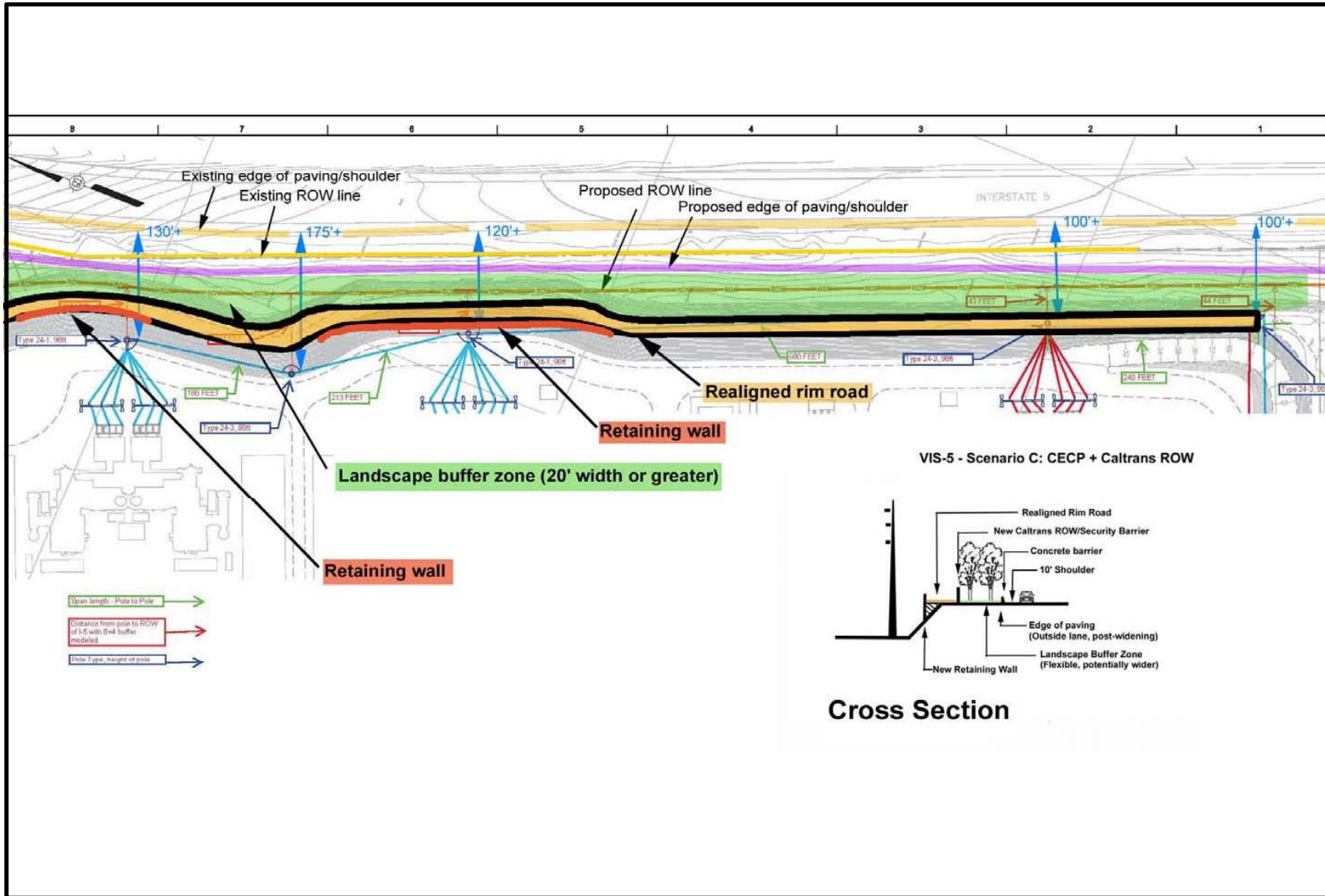
Carlsbad Energy Center Project Amendment - Conceptual Cross-Section, Condition VIS-5, **Scenario B**



VISUAL  
RESOURCES

**VISUAL RESOURCES - FIGURE 6**

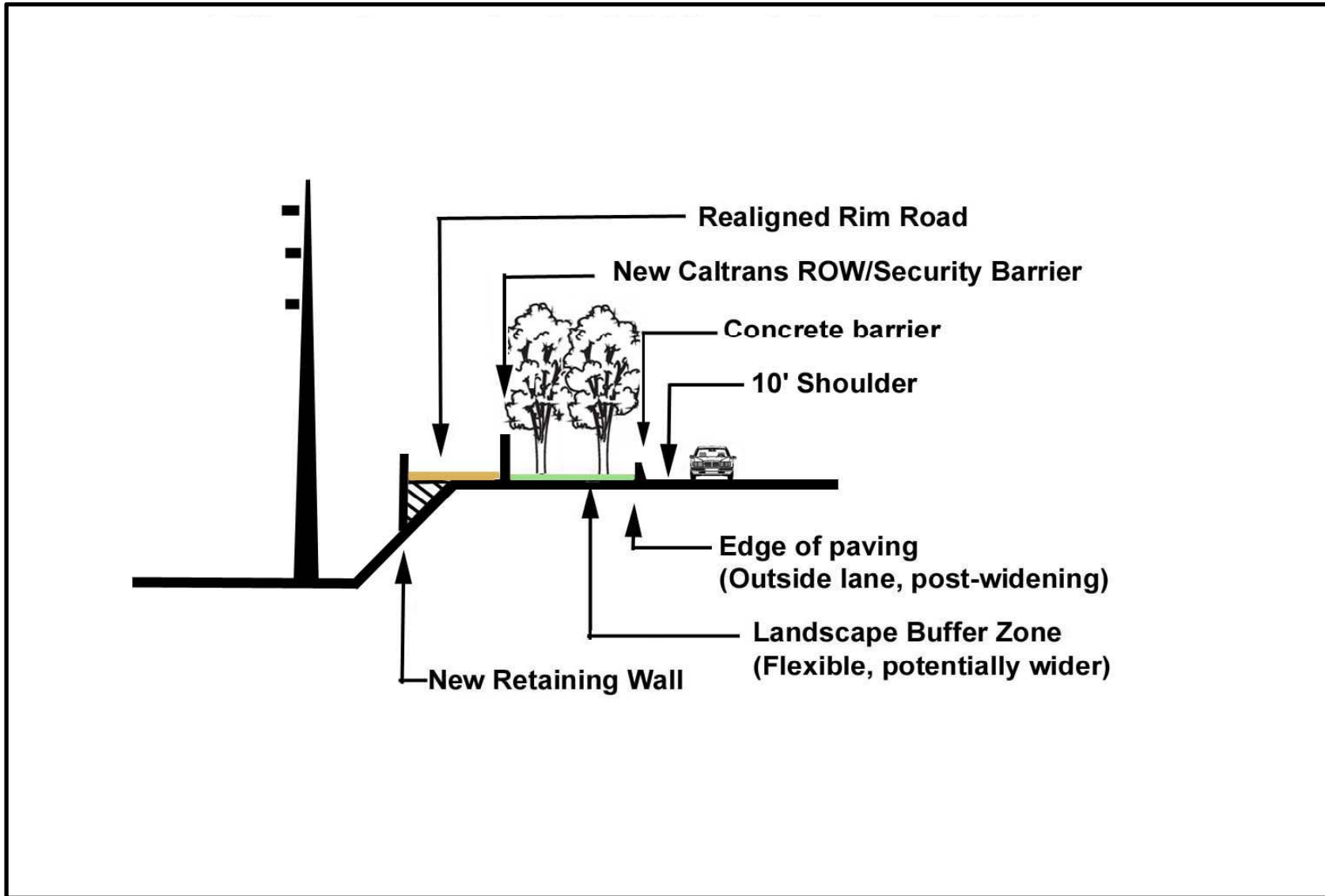
Carlsbad Energy Center Project Amendment - Condition VIS-5, **Scenario C** (Both CECP Site and Caltrans ROW)



VISUAL  
RESOURCES

**VISUAL RESOURCES - FIGURE 7**

Carlsbad Energy Center Project Amendment - Conceptual Cross-Section, Condition VIS-5, **Scenario C**



VISUAL  
RESOURCES

VISUAL RESOURCES - FIGURE 9

Carlsbad Energy Center Project Amendment - I-5 Widening Design Guidelines – ROW Landscaping



<p><b>Category I (California Native):</b> Used for revegetation near native habitat. California coastal native plants and hydroseed. No irrigation once established.</p>
<p><b>Category II (Native Transitional):</b> Used at interchanges near native areas and at slopes with freeway walls. California natives/cultivar plants and hydroseed receive minimal maintenance. Walls have no vines. Requires minimal irrigation once established.</p>
<p><b>Category III (Standard Landscape):</b> Used at urban interchanges. California native/cultivar plants with mulch areas receive low maintenance once established. Requires low amounts of irrigation once established.</p>
<p><b>Category IV (Enhanced Landscape):</b> Used at gateway interchanges and landscapes maintained by others. California native/ornamental plantings receive regular maintenance and weeding. Decorative rock mulches and pavings are used. Above standard landscape in State right-of-way requires a Landscape Maintenance Agreement. Requires low amounts of irrigation.</p>

VISUAL  
RESOURCES