

DOCKETED

Docket Number:	07-AFC-06C
Project Title:	Carlsbad Energy Center - Compliance
TN #:	203327
Document Title:	Project Owner's Supplemental Response to Data Request Set 3 (No. 76)
Description:	N/A
Filer:	Dee Hutchinson
Organization:	Locke Lord LLP
Submitter Role:	Applicant Representative
Submission Date:	11/13/2014 10:02:25 AM
Docketed Date:	11/13/2014



Attorneys & Counselors

500 Capitol Mall, Suite 1800
Sacramento, CA 95814
Telephone: 916-930-2500
Fax: 916-930-2501
www.lockelord.com

John A. McKinsey
Direct Telephone: 916-930-2527
Direct Fax: 916-720-0443
jmckinsey@lockelord.com

November 13, 2014

VIA E-FILING

Carlsbad Energy Center Project (07-AFC-06C)
Mike Monasmith, Project Manager
California Energy Commission
1516 Ninth Street
Sacramento, CA 95814-5512


Re: Carlsbad Energy Center Project Petition to Amend (07-AFC-06C)
Supplemental Response to Data Request Set 3 (No. 76)
(Revised Response to Data Request 76)

Dear Mr. Monasmith:

California Energy Commission staff ("**Staff**") filed Data Request Set 3 (Nos. 67–85) (TN 203149) (the "**Data Requests**") on October 2, 2014, regarding Carlsbad Energy Center LLC's ("**Project Owner**") Petition to Remove Obsolete Facilities to Support Construction ("**PTR**") of the Carlsbad Energy Center Project (07-AFC-06C) ("**CECP**"), and Petition to Amend ("**PTA**") the CECP. On October 31, 2014, Project Owner filed responses to Data Requests Nos. 67-84 (TN 203300). Project Owner hereby submits its supplemental response to Data Request No. 76.

Please contact me if you have questions.

Locke Lord LLP

By: 

John A. McKinsey
Attorneys for Carlsbad Energy Center LLC

JAM:dh
Enclosure

Carlsbad Energy Center Petition to Amend

(07-AFC-06C)

Supplemental Response to Data Request 76

(Revised Response to Data Requests 76)

Submitted to
California Energy Commission

Prepared by
Carlsbad Energy Center LLC

With Assistance from

CH2MHILL®

6 Hutton Centre Drive Suite 700
Santa Ana, CA 92707

November 13, 2014

Contents

Section	Page
Introduction.....	1
Transmission System Engineering (76)	2

Figures

- DR76-1c NCTD Rail Corridor Cross Section
- DR24-2R2 Transmission Line Pole Cross Section Double-circuit Configuration Steel Pole

Introduction

This supplemental filing provides a revised response to CEC Staff's Data Request 76 to correct some aspects of the response previously provided to Data Request 76 that was submitted on October 31, 2014.

Transmission System Engineering (76)

SUPPLEMENTAL DATA REQUEST

76. For the overhead gen tie lines crossing over the North Coast Transit District Rail Corridor (NCTD) double tracks, please submit overhead line diagrams (plan and side views) showing clearance of the lowest conductor of the line in feet above the railway tracks, as well as positions of the poles (including type of poles) on both sides of the NCTD railway tracks.

Supplemental Response:

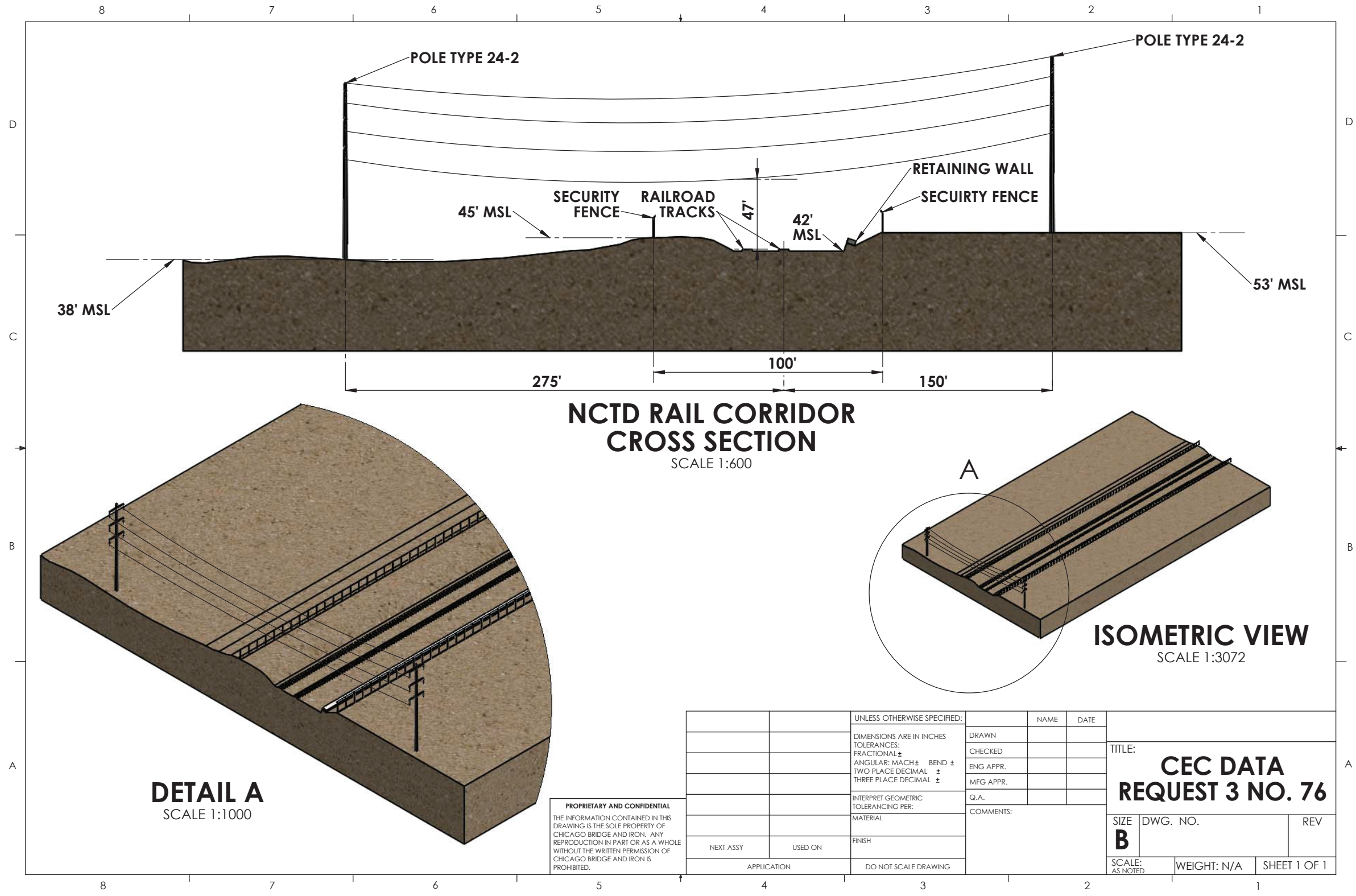
After the response to DR 76 was docketed on October 31, 2014, the Applicant noted that two preliminary versions of the Figure DR76-1a and Figure DR76-1b were inadvertently presented. The final correct version of the figure is presented in this revised response as Figure DR76-1c.

In review of this Figure DR DR76-1c, the Applicant noted two of the heights to the top conductor were incorrectly represented in Figure DR 24-2R1. The enclosed Figure DR 24-2R2 corrects the minor errors in the previous response to this data request.

Specifically:

1. Figure DR24-2R2 - Dimension to bottom of top conductor and ground at 84' has been corrected to 94'
2. Figure DR24-2R2 - Dimension to top of top conductor and ground at 91' has been corrected to 101'.

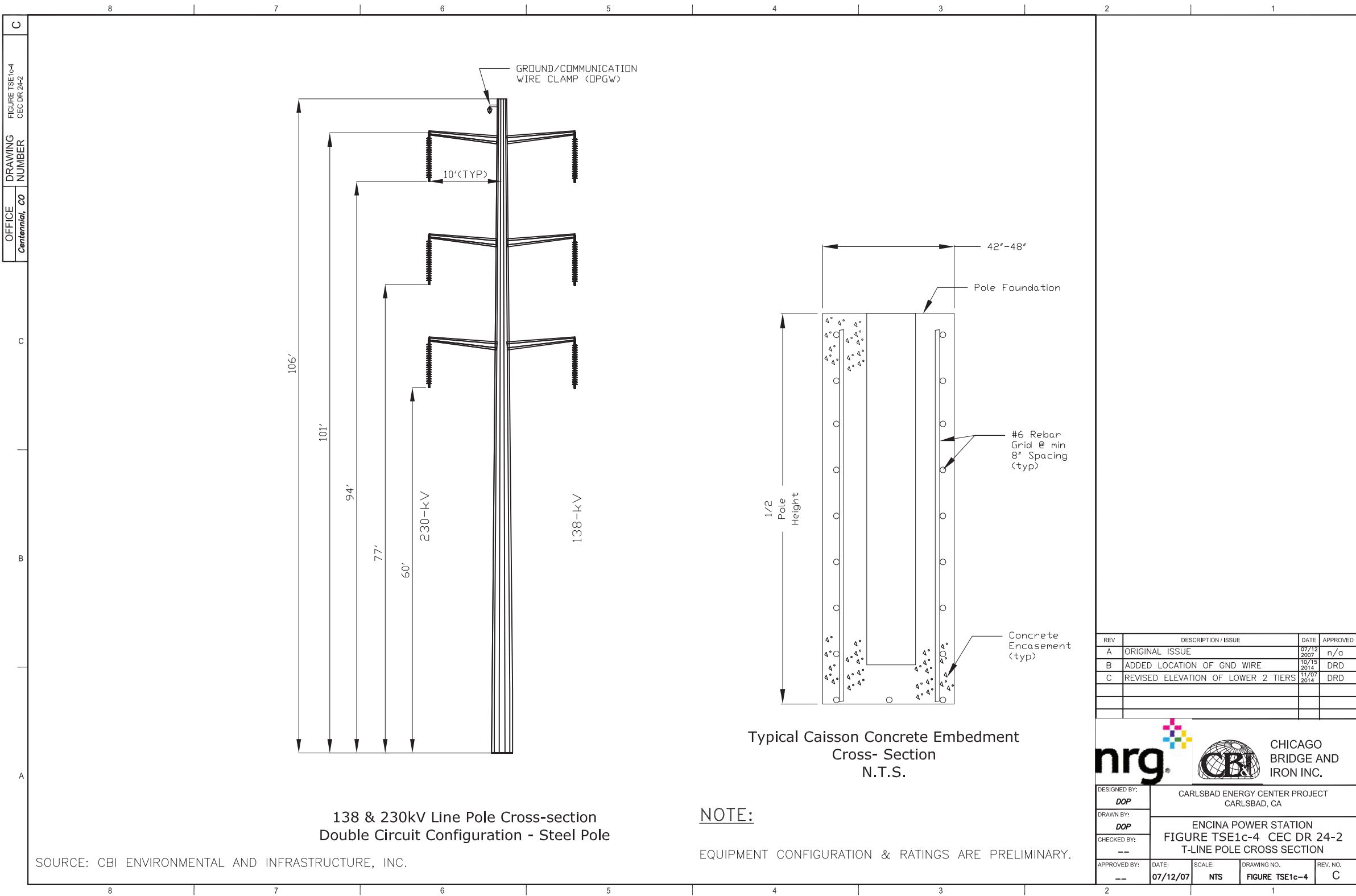
The visual simulations were based on the geometry of the pole which has not changed and is correctly included in the visual simulations and not on the subsequent requested for the pole dimensions in Data Request 24. Thereby the visual simulations are correct as previously submitted and no revision of the visual simulations is required.



PROPRIETARY AND CONFIDENTIAL
THE INFORMATION CONTAINED IN THIS DRAWING IS THE SOLE PROPERTY OF CHICAGO BRIDGE AND IRON. ANY REPRODUCTION IN PART OR AS A WHOLE WITHOUT THE WRITTEN PERMISSION OF CHICAGO BRIDGE AND IRON IS PROHIBITED.

		UNLESS OTHERWISE SPECIFIED:		NAME	DATE	
		DIMENSIONS ARE IN INCHES				
		TOLERANCES:		DRAWN		
		FRACTIONAL ±		CHECKED		
		ANGULAR: MACH ± BEND ±		ENG APPR.		
		TWO PLACE DECIMAL ±		MFG APPR.		
		THREE PLACE DECIMAL ±		Q.A.		
		INTERPRET GEOMETRIC TOLERANCING PER:		COMMENTS:		
		MATERIAL				
		FINISH				
NEXT ASSY	USED ON					
	APPLICATION	DO NOT SCALE DRAWING				
			TITLE:			CEC DATA REQUEST 3 NO. 76
SIZE		DWG. NO.			REV	
B						
SCALE:	WEIGHT:	SHEET 1 OF 1				
AS NOTED	N/A					

FIGURE DR76-1c
NCTD Rail Corridor Cross Section
Carlsbad Energy Center Project
Carlsbad, California (07-AFC-06C)
Petition to Amend



138 & 230kV Line Pole Cross-section
Double Circuit Configuration - Steel Pole

SOURCE: CBI ENVIRONMENTAL AND INFRASTRUCTURE, INC.

nrg CHICAGO BRIDGE AND IRON INC.

DESIGNED BY: **DOP** CARLSBAD ENERGY CENTER PROJECT CARLSBAD, CA

DRAWN BY: **DOP**

CHECKED BY: ---

APPROVED BY: --- DATE: 07/12/07 SCALE: NTS DRAWING NO. FIGURE TSE1c-4 REV. NO. C

FIGURE DR24-2R2
Transmission Line Pole Cross Section
Double-circuit Configuration Steel Pole
Carlsbad Energy Center Project
Carlsbad, California (07-AFC-06C)
Petition to Amend