

DOCKETED

Docket Number:	15-WATER-03
Project Title:	Water Energy Appliance Rebate Program
TN #:	206055
Document Title:	DWR Presentation from July Workshops
Description:	N/A
Filer:	Anne Fisher
Organization:	Department of Water Resources
Submitter Role:	Commission Staff
Submission Date:	9/10/2015 9:23:51 AM
Docketed Date:	9/10/2015

DWR Turf and Toilet Rebate Programs



Water Use and Efficiency Branch
Division of Statewide Integrated Water Management



Four Turf and Toilet Programs

- 1. Residential Rebates and Contractor-Direct Rebates**
- 2. Commercial, Industrial and Institutional (CII) Installations**
- 3. Statewide Campaign To Promote Drought Tolerant Landscapes**
- 4. High Efficiency Toilet Retrofit Program**



Rebate Funding

Prop I Urban Water Conservation Funds

- Residential Programs
 - Turf Replacement: **\$22M**
 - Toilets: **\$12M**
- Public facilities (CII)
 - Turf Replacement: **\$3M**



Who is Eligible for Rebates?

Both the turf and toilet programs each have funds available in separate budgets:

- statewide
- targeting underserved communities

Proposition 1 requires a minimum of 10% funding to disadvantaged communities. The initiative is targeting to reach 50%.



Underserved Communities

Underserved or Underrepresented Communities

Economically Distressed Area in San Joaquin Valley

Disadvantaged Community

80% of statewide average median household income



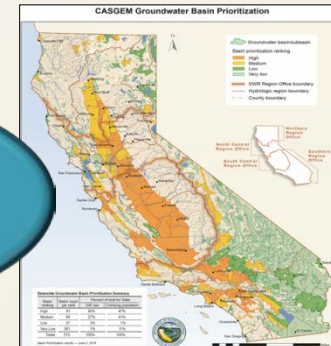
YES

YES

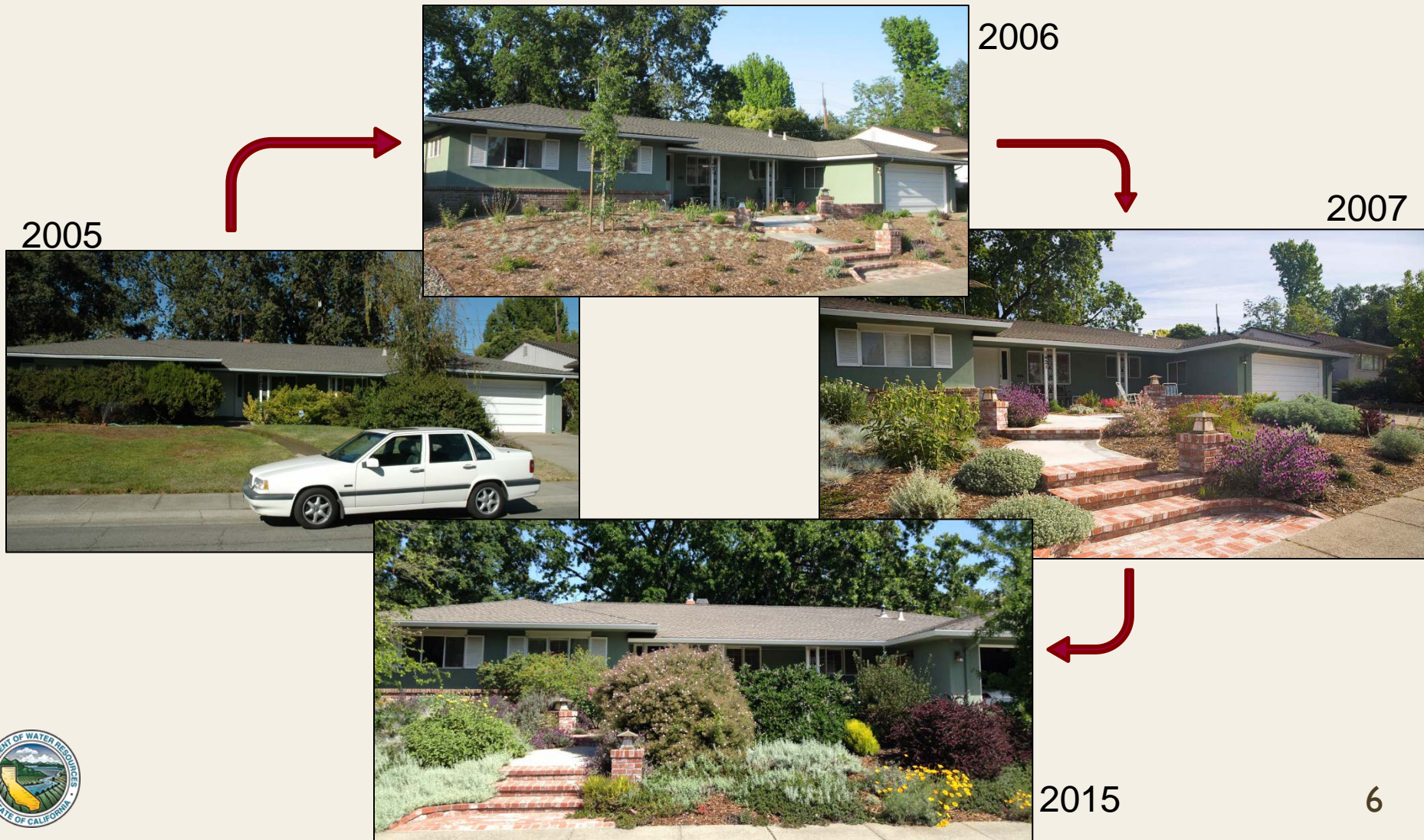
High or Medium Priority Groundwater Basin

YES

Eligible

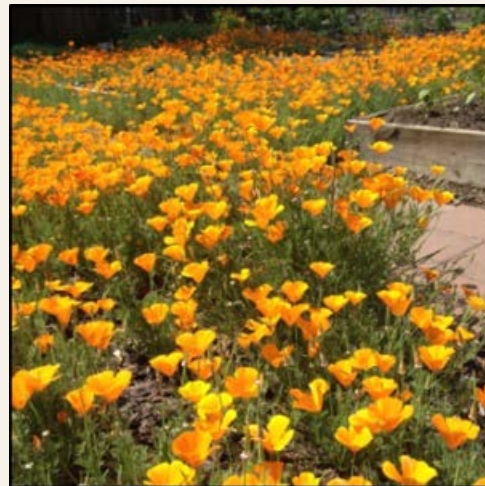


Program I: Residential Turf Replacement



Program Administration

- DWR to contract with EGIA for residential and contractor-direct rebates
- EGIA will certify eligible contractors
- Local agencies may partner with DWR through EGIA



Program Administration, con't

- Rebates on first-come, first-serve basis
- Applications available in August
- A link to the application will be available on the Turf Replacement Initiative webpage

www.water.ca.gov/turf/



A screenshot of the California Department of Water Resources website. The page title is "California 2015 Turf Replacement Initiative". The main heading is "Replacing California's Lawns". The content includes a paragraph about outdoor landscaping being the largest use of water in California homes, and a notice of a public meeting webinar. The page also features a sidebar with navigation links such as "Home", "Upcoming Events (New)", "Proposition 1 Overview", "DWR Drought Homepage", "Water Use Efficiency Homepage", "April 1, 2015 Executive Order", and "Save Our Water". The footer contains social media icons for Facebook, Twitter, and YouTube, and a contact email address: wue@water.ca.gov.

Residential Rebate Caps

- Rebates of \$2 per square foot of replaced turf
- Capped at 1,000 square feet
- Maximum rebate of \$2,000 per household
- Applicants may also receive a rebate from local water agencies, but only if the total of the two rebates is \$2 per square foot



Rebate Specifications

See the Initiative Guidelines, Attachment A:

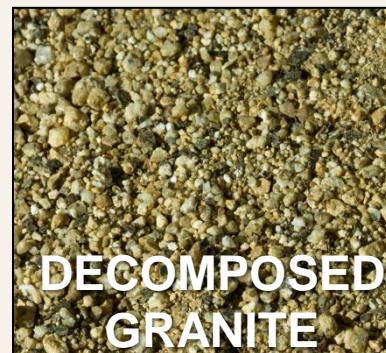
www.water.ca.gov/turf/

- Turf may be alive or dead, but bare earth areas not eligible for rebates
- Turf removal methods not specified
- Plants must be low water use, drought-tolerant, or California Native plants
- Must include at least one tree, existing or new



Rebate Specifications, con't.

- Mulch on all exposed soil surfaces



- Decks, patios, and structures not allowed as rebated portion of landscape
- Paving stones, pavers, and brick patios with permeable grouting allowed



Rebate Specifications, con't.

- Drip irrigation, micro-spray, or hand watering only



- Artificial turf is not eligible for rebate
- Must complete project within 90 days



Program 2: Commercial, Industrial and Institutional Turf Replacement



Santa Rosa Press Democrat

Santa Rosa City Hall Proposed Re-landscaping



Santa Rosa Press Democrat



CII Program Overview

- Targets underserved counties
- Targets conversion of public spaces
- For DACs, may be able to provide most of the components to complete a project
- Partnering with California Conservation Corps

CCC removing turf in the City of Corona



Potential Project Partners

Outreach to counties is beginning to:

- School districts
- City and county governments
- Water agencies
- Integrated Regional Water Management groups



Program 3: Statewide Campaign



Planned Approach

- Implement concurrently with both the Residential Rebate and the CII programs
- Communicates
 - Benefits and importance of converting lawn to water-efficient landscapes
 - Lawn conversion guidance and tools
 - Residential rebate information



Program 4: High Efficiency Toilet Retrofit Program



High Efficiency Toilet Retrofit Program

- Targets replacing 60,000 inefficient toilets
- Rebate is \$100 per toilet
- Replacement of any existing toilet over 1.28 gallons per flush
- One rebate per household



HET Retrofit Program

- DWR partnering with CEC to leverage HET retrofit and water appliance programs
- Rebates will be processed through EGIA
- Direct installations may be available for some low-income residences through a partnership with the Department of Community Services & Development



Program Managers

- Toilet Program – Dave Todd,
Dave.Todd@water.ca.gov
- Residential Turf Program – Jodi Evans,
Jodi.Evans@water.ca.gov
- CII Turf & Statewide Campaign – Toni
Pezzetti, Tonianne.Pezzetti@water.ca.gov

Department of Water Resources
Water Use and Efficiency Branch
P.O. Box 942836
Sacramento, CA 94236-0001

