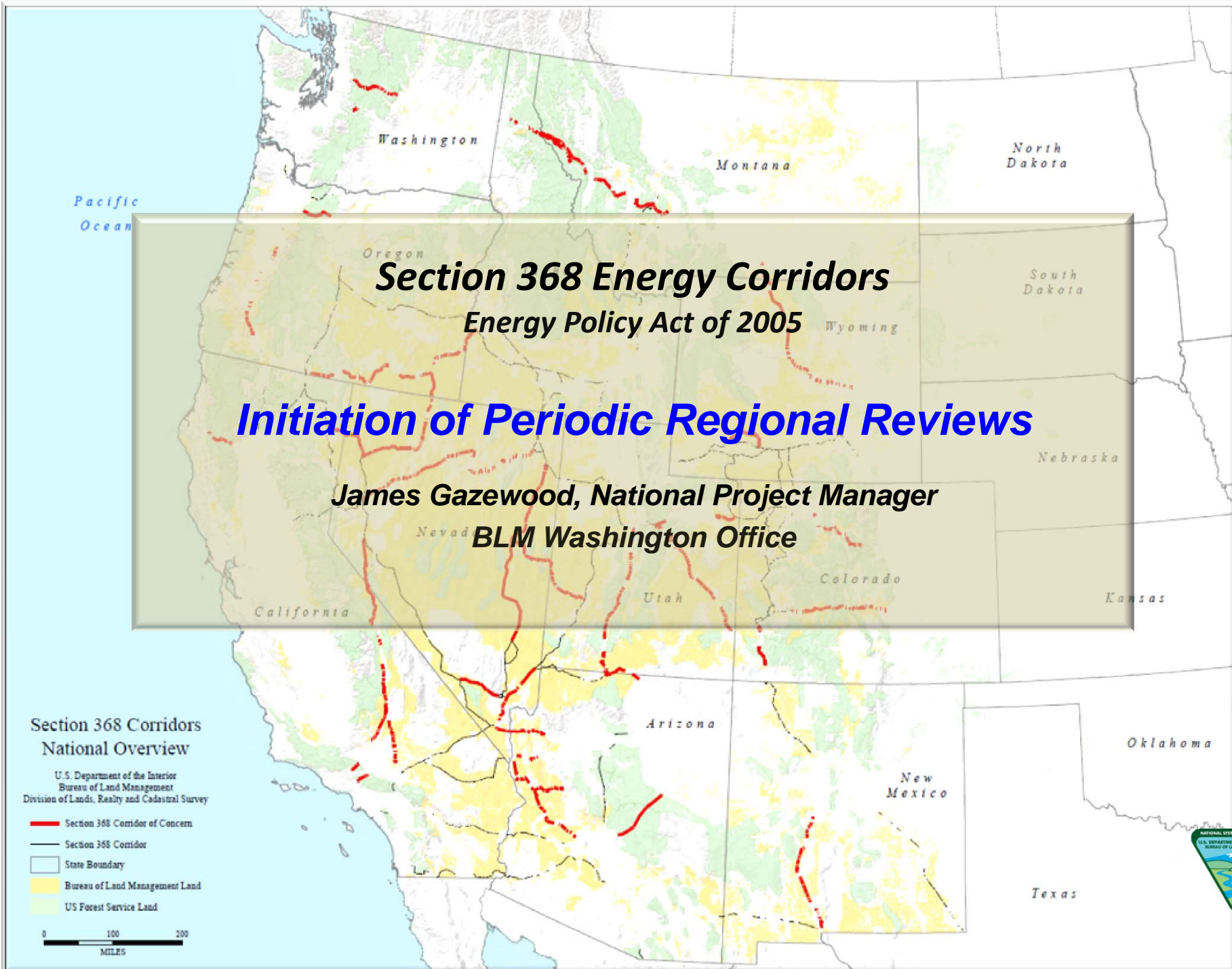


DOCKETED

Docket Number:	15-RETI-02
Project Title:	Renewable Energy Transmission Initiative 2.0
TN #:	213501
Document Title:	Panel 2 Presentation - Initiation of Periodic Regional Reviews
Description:	By - RETI 2.0 Western Outreach Project: Las Vegas Workshop 9-1-16
Filer:	Misa Milliron
Organization:	BLM Washington Office
Submitter Role:	Public Agency
Submission Date:	9/6/2016 11:31:17 AM
Docketed Date:	9/6/2016



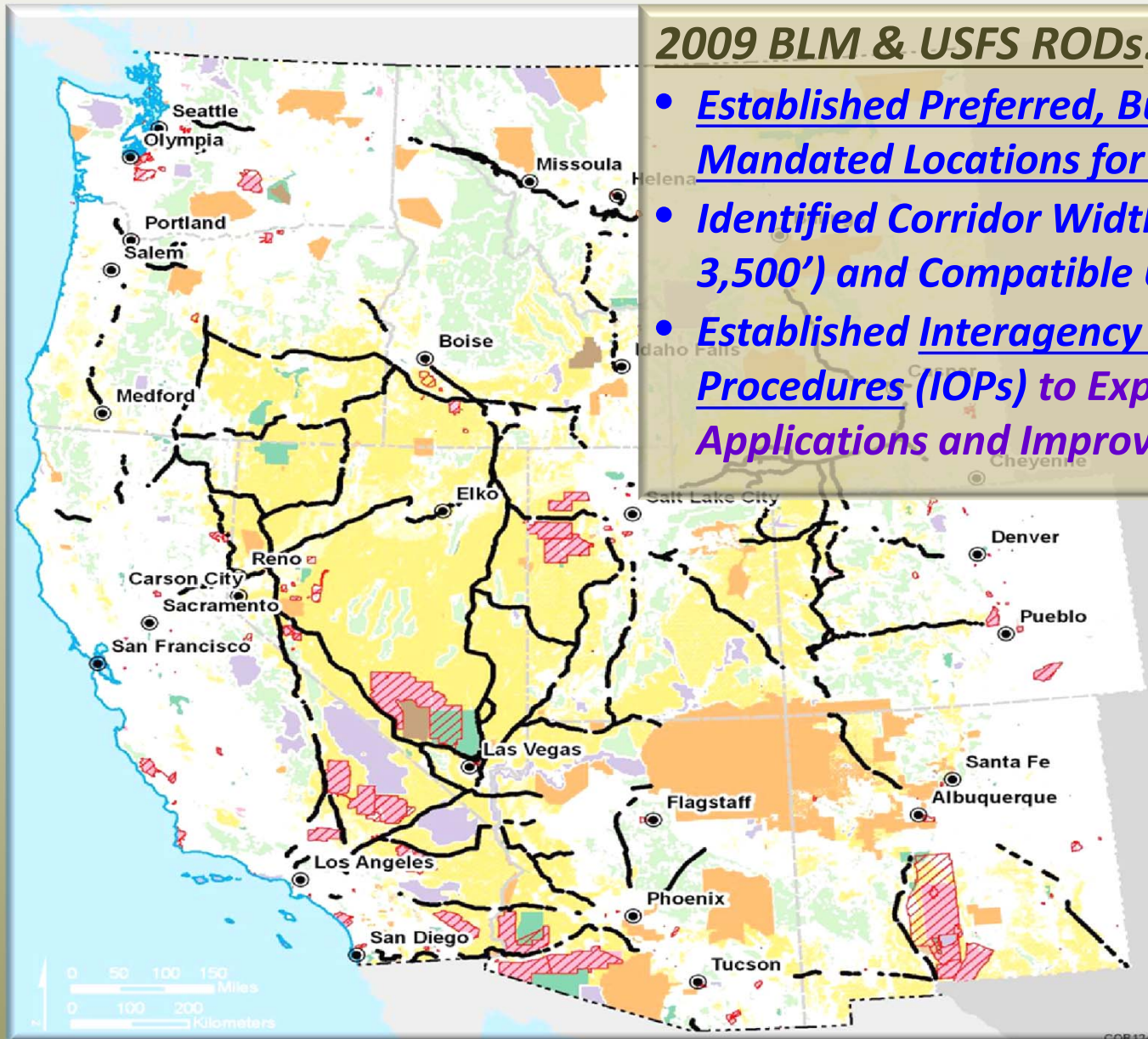
Background: Section 368 Energy Corridors

Established under the 2005 Energy Policy Act:

- ✓ **Energy Corridors in AZ, CA, CO, ID, MT, NV, NM, OR, UT, WA and WY**
- ✓ **For BLM: 5,000 Miles / 92 Land Use Plan Amendments**
- ✓ **For USFS: 990 Miles / 38 Land Use Plan Amendments**



Background: Section 368 Energy Corridors



2009 BLM & USFS RODs:

- Established Preferred, But Not Mandated Locations for Future Projects
- Identified Corridor Widths (Typically 3,500') and Compatible Uses
- Established Interagency Operating Procedures (IOPs) to Expedite Applications and Improve Consistency

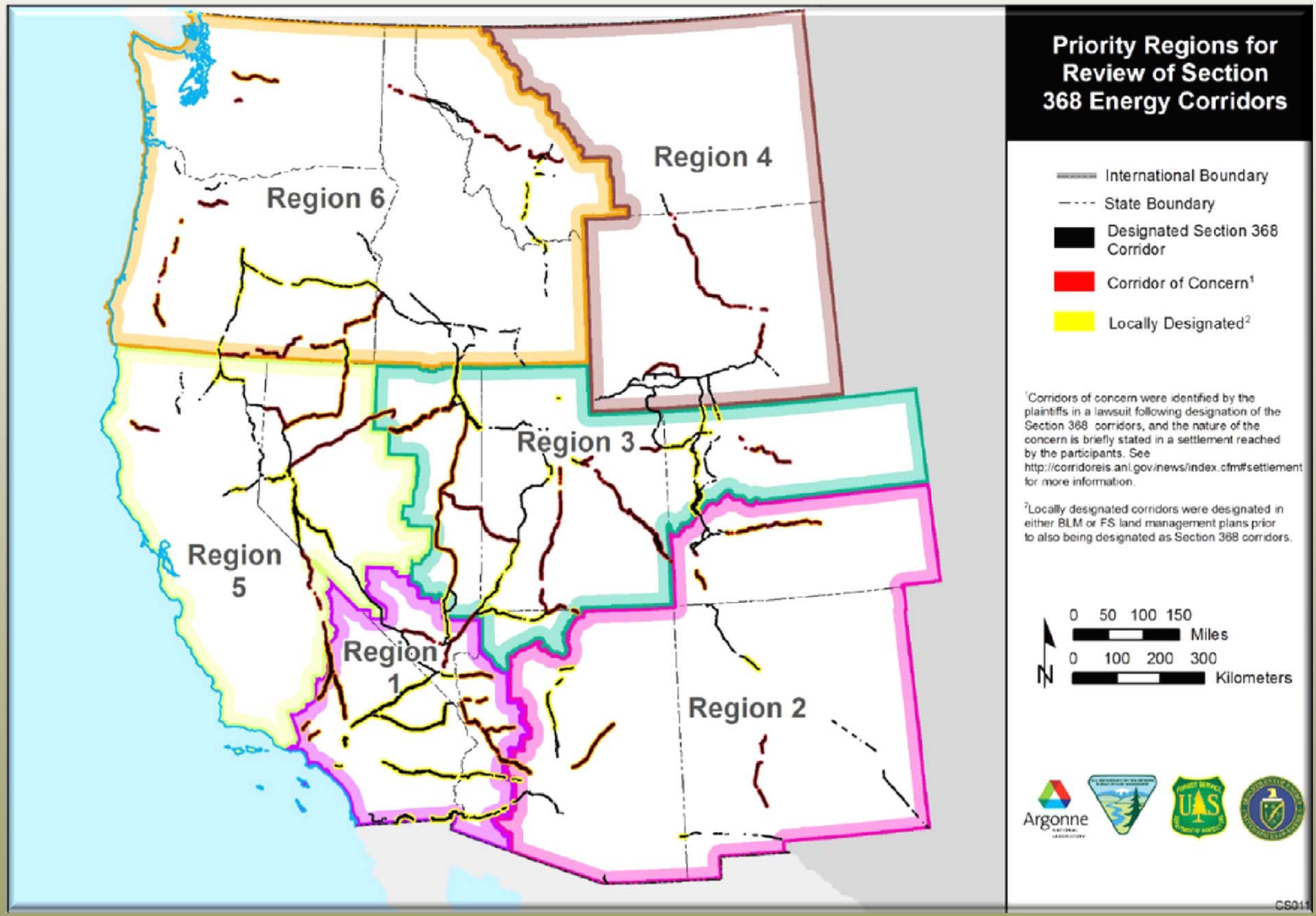


Background: 2012 Settlement Agreement Requirements

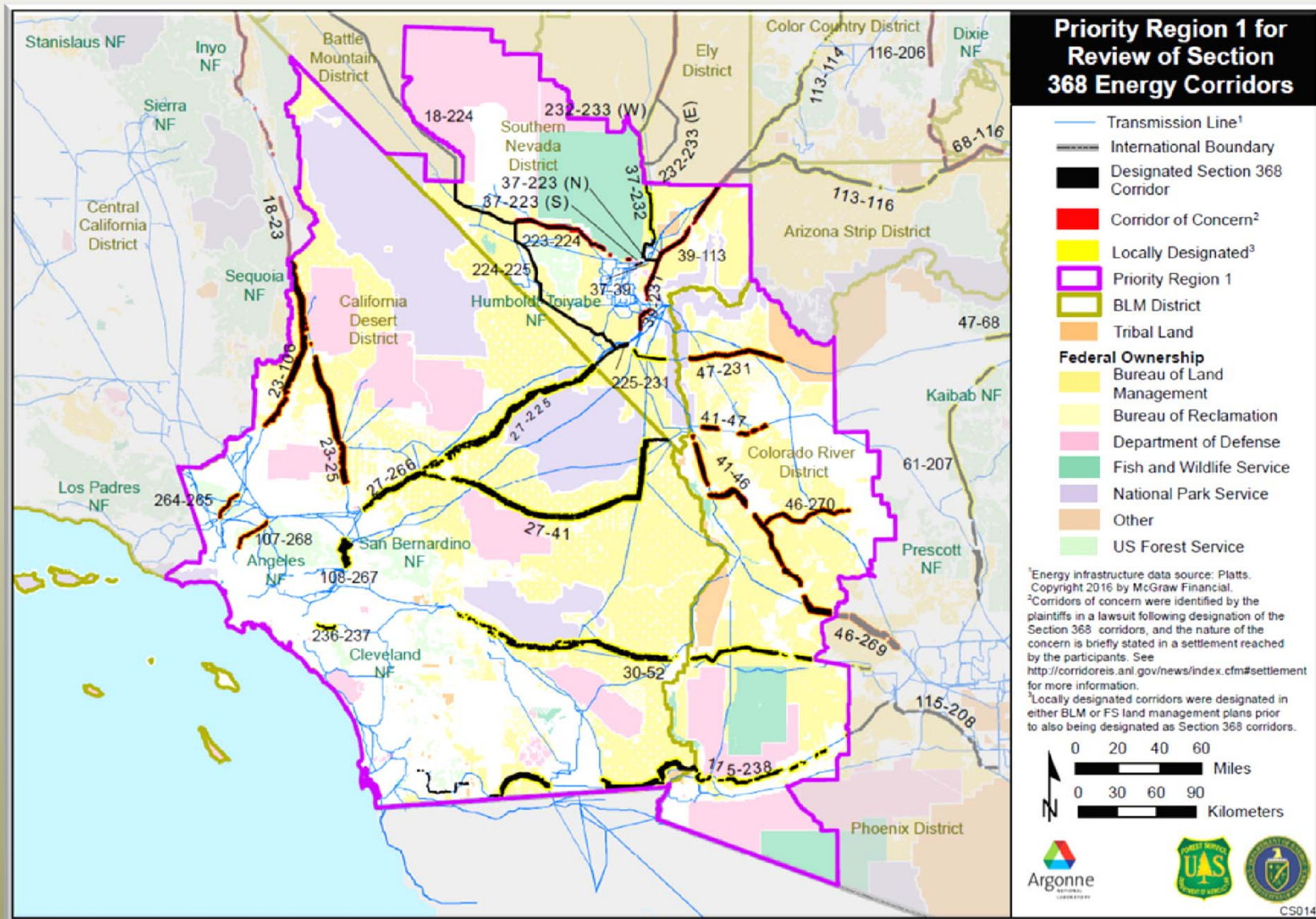
- ✓ *Established Interagency Workgroup (BLM, USFS, DOE)*
- *Remaining Settlement Requirements:*
 - ✓ *Release of Corridor Study by Argonne National Lab (May 2016)*
 - ✓ *Initiation of Periodic Regional Reviews of the Corridors*



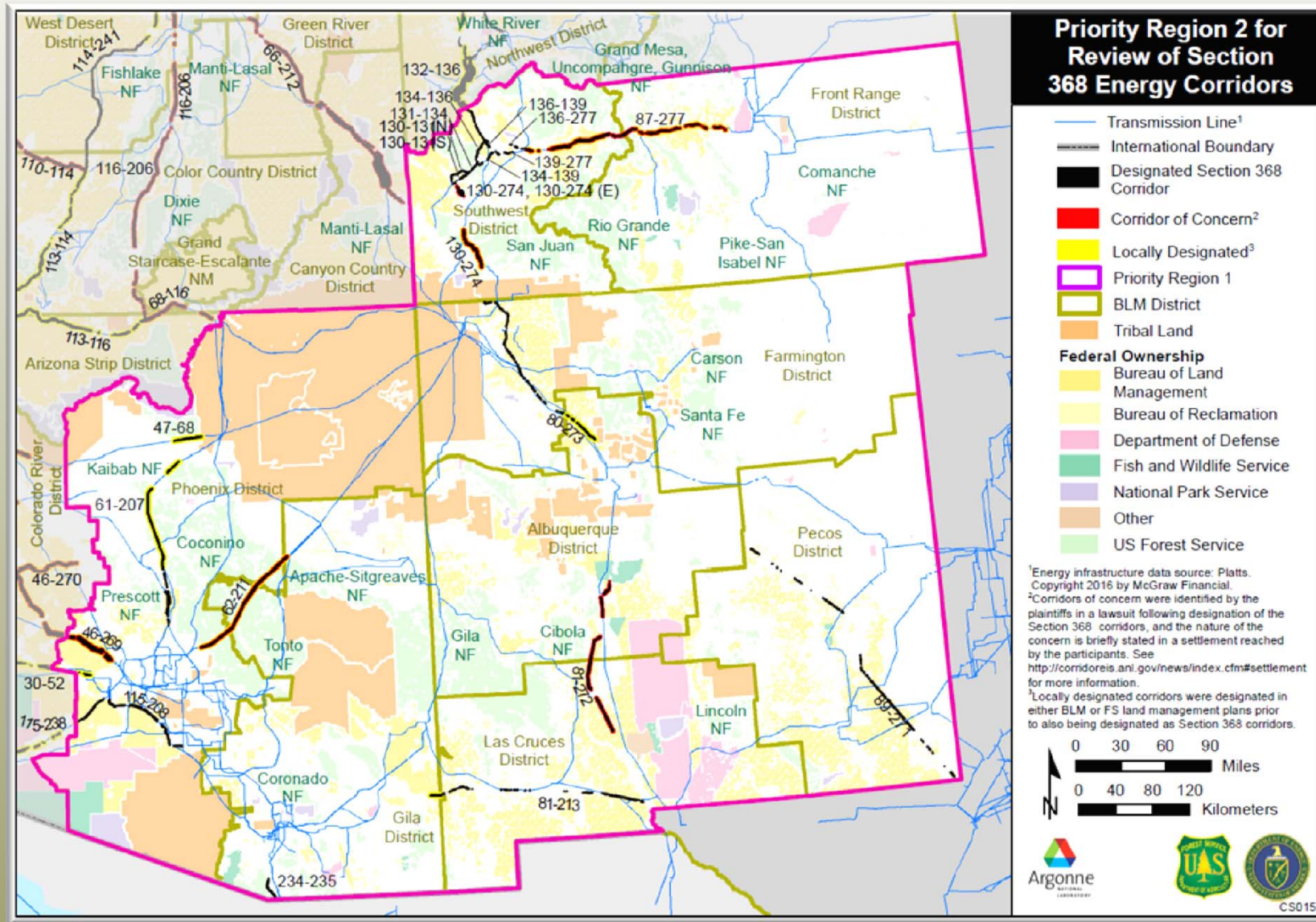
The Six Regional Reviews to be Conducted



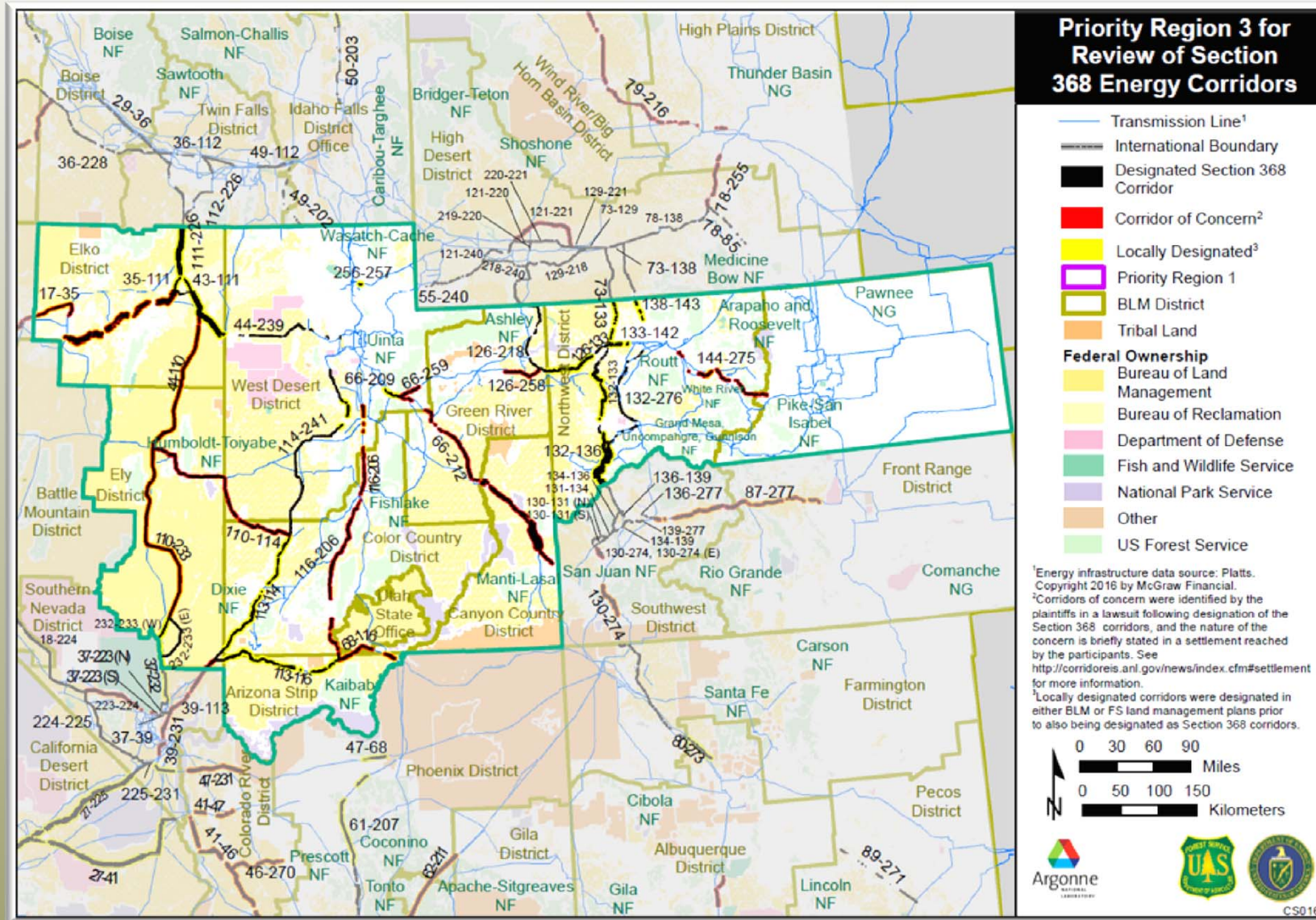
Six Regional Reviews to be Conducted – Region 1 Corridors



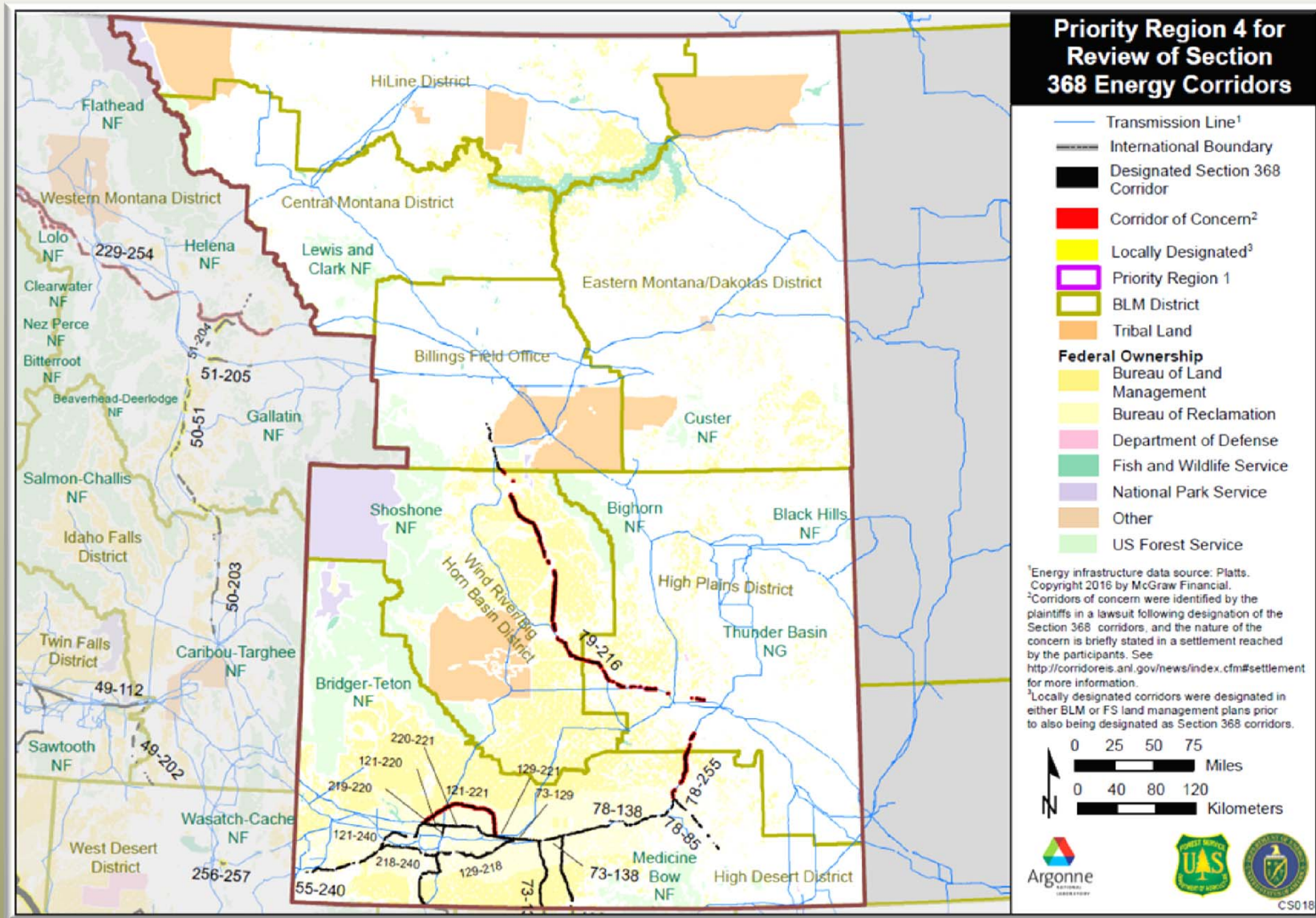
Six Regional Reviews to be Conducted – *Region 2 Corridors*



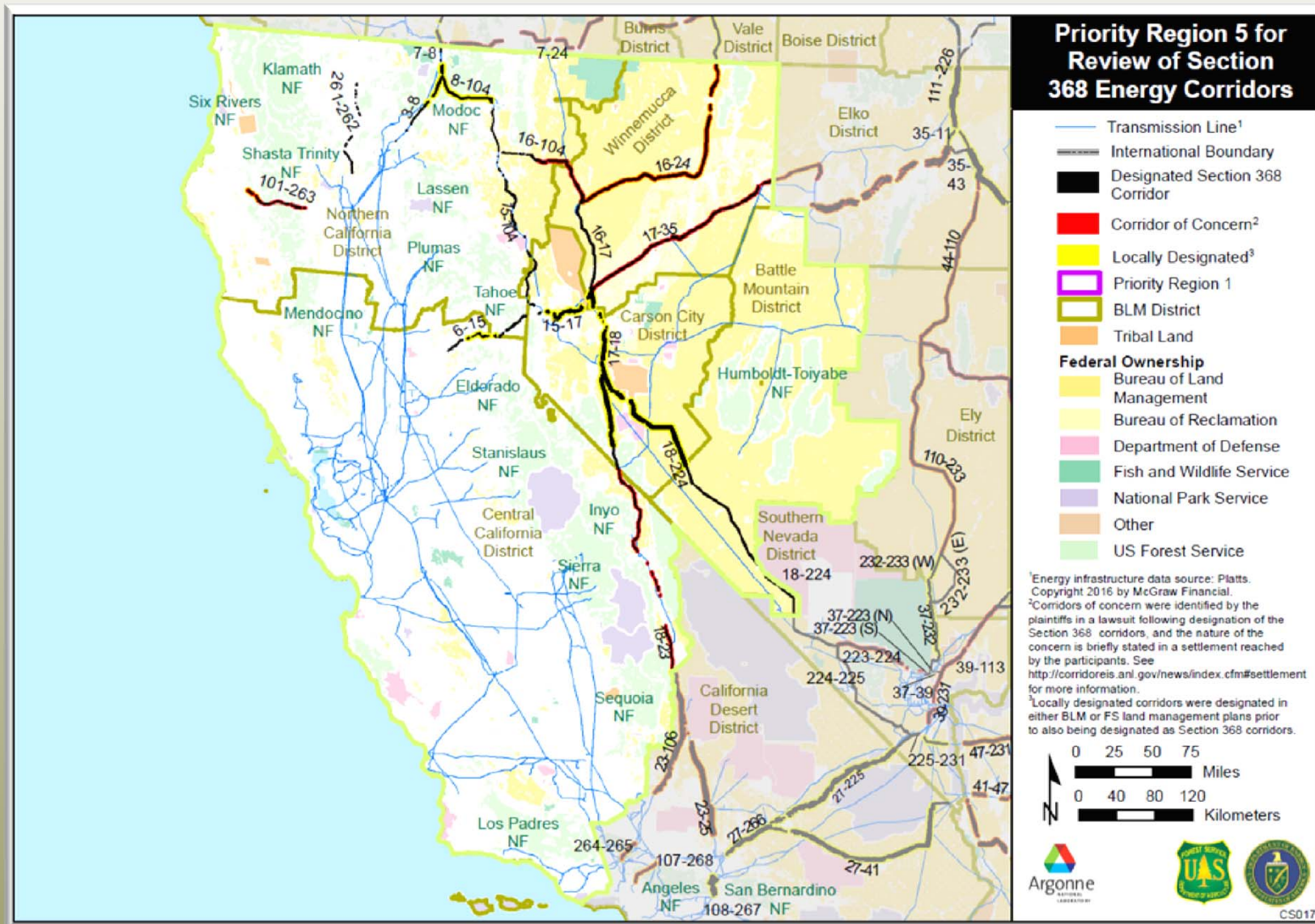
Six Regional Reviews to be Conducted – Region 3 Corridors



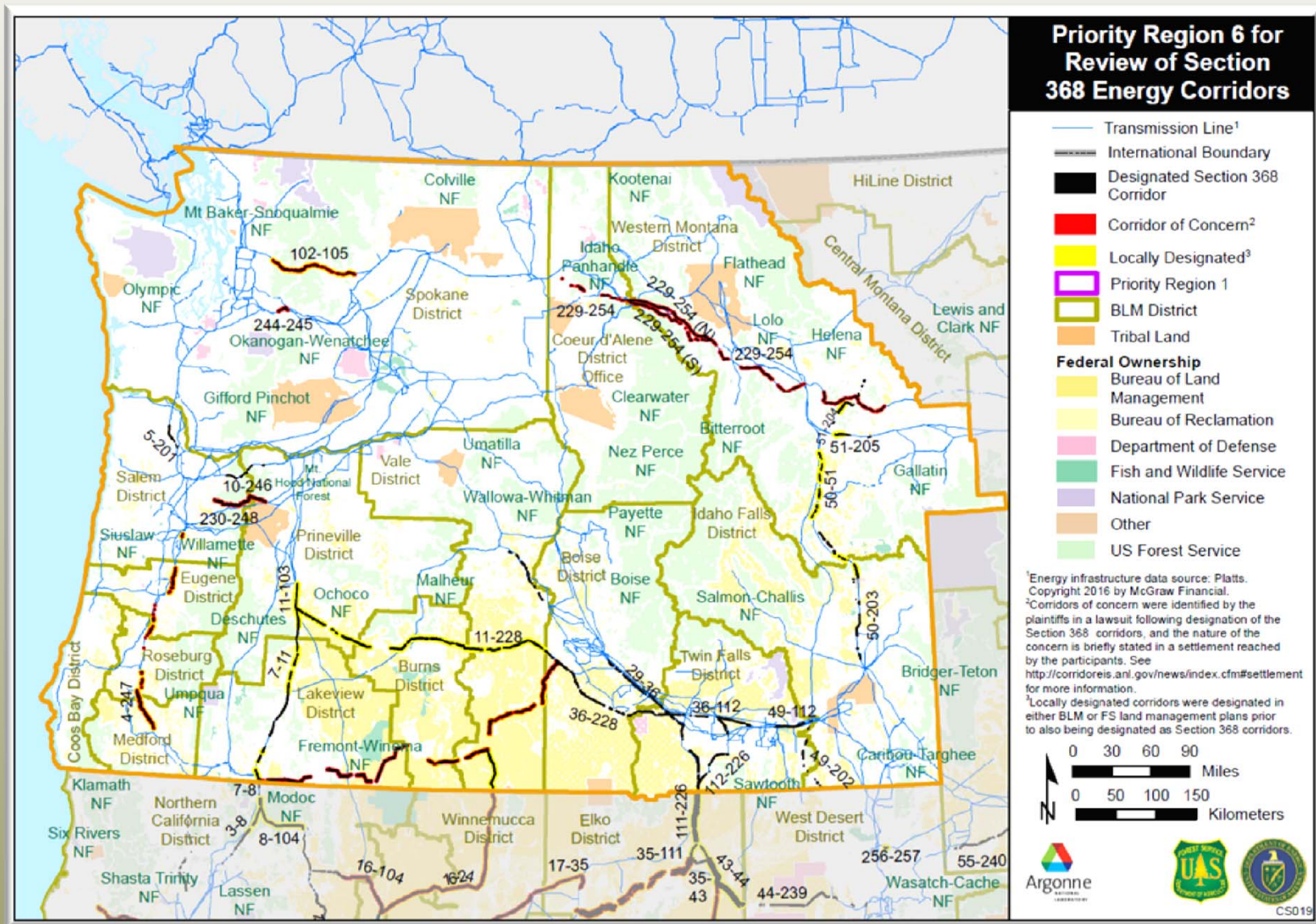
Six Regional Reviews to be Conducted – Region 4 Corridors



Six Regional Reviews to be Conducted – **Region 5 Corridors**



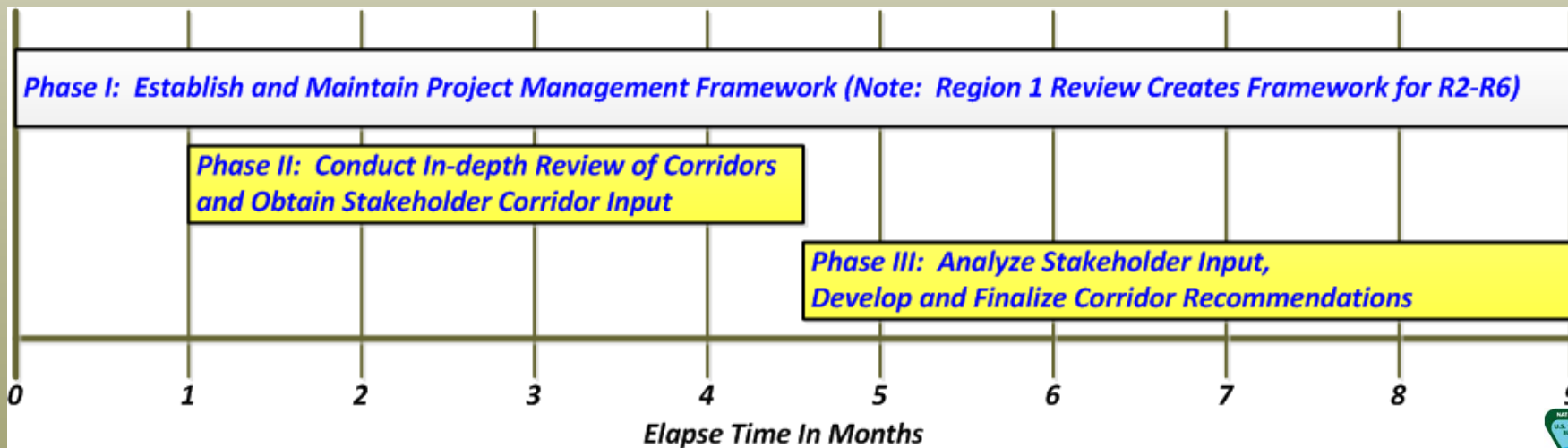
Six Regional Reviews to be Conducted – Region 6 Corridors



Three+ Year Schedule: For Phased Reviews of Regions 1 - 6

No	Regional Review	Start	Finish	2016				2017				2018				2019			
				Q1	Q2	Q3	Q4	Q1	Q2	Q3	Q4	Q1	Q2	Q3	Q4	Q1	Q2	Q3	Q4
1	S. CA, S. NV, W. AZ	May 2016	February 2017	█															
2	E. AZ, NM, S. CO	January 2017	September 2017					█											
3	N. CO, UT, E. NV, NW. AZ	August 2017	March 2017									█							
4	WY, E. MT	February 2018	October 2018									█							
5	N. CA, W. NV	September 2018	April 2019													█			
6	W. MT, ID, OR, WA	March 2019	November 2019													█			

Overview of a Regional Review: The Three Work Phases

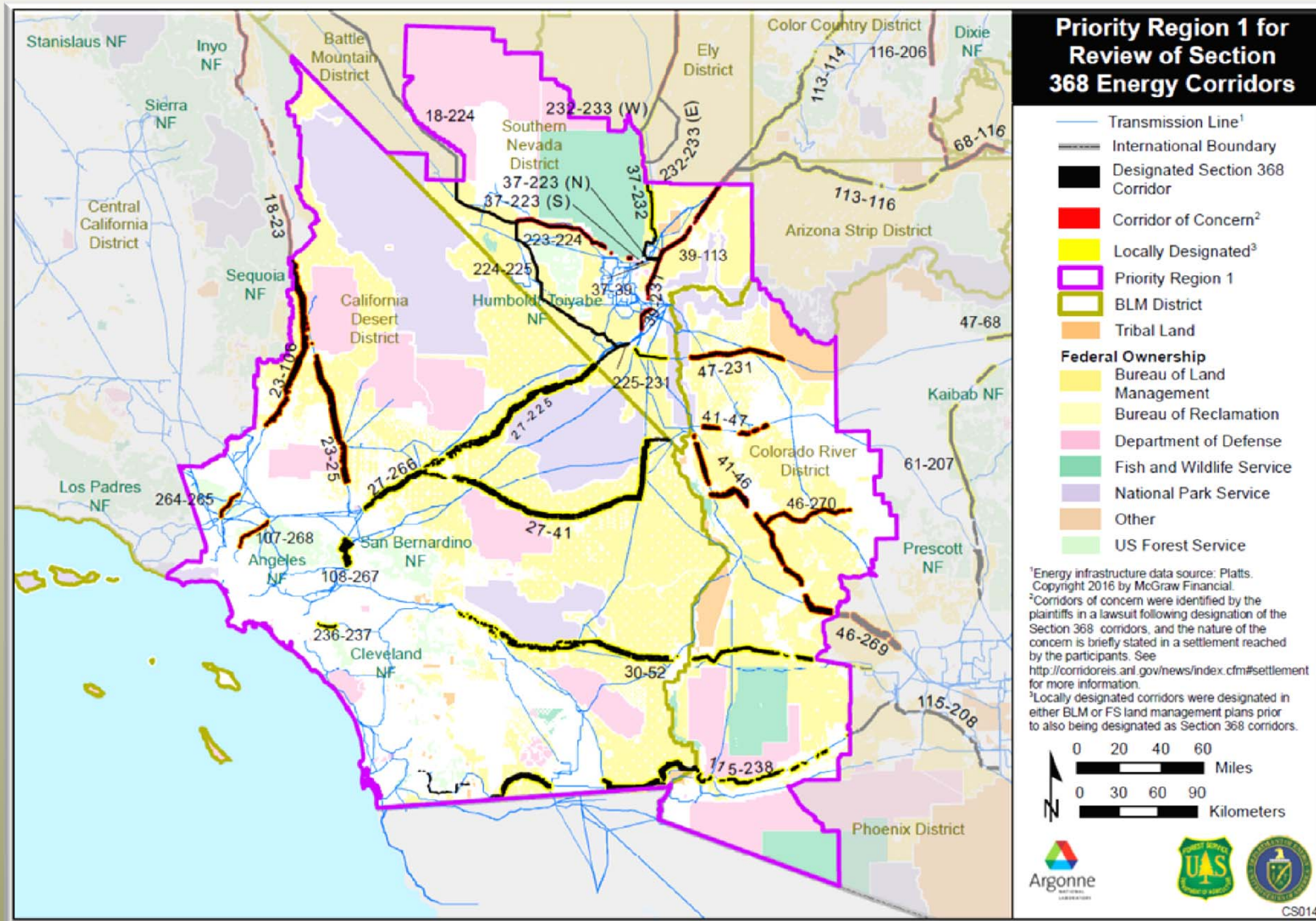


Our End Product: Land Use Plan Recommendations

- ✓ **Provide Recommendations to Add, Alter or Delete Corridors to be Carried out through Subsequent Land Use Planning Actions**
 - ✓ **Reviews are not NEPA-based. NEPA occurs during LUP Action**
 - ✓ **Stakeholder Input during Reviews will result in Recommendations to be used in New LUP Scoping**
 - ✓ **Recognize Corridor Influence from Ongoing LUP Action**
 - **For BLM Nevada, Ongoing Las Vegas RMP Corridor Work is a Good Example**
 - **For BLM California, the DRECP Did Not Address Corridors – Placed Constraints**
 - ✓ **Recently Authorized or Pending Major Transmission / Pipeline Project Applications will Provide Insight on Further Corridor Additions or Alterations**
 - ❖ **Reviews to Provide Geospatial-based Corridor Siting Information Intended to Best Meet Future BLM and USFS Planning Needs**



R1 Corridors & *Corridors of Concern* for S. CA, S. NV, W. AZ



Tools to Facilitate Stakeholder Understanding & Critical Input

✓ *Developing Corridor Abstracts to Document Known Concerns*

Corridor Abstracts will be used to:

- **Ensure Stakeholder Understanding of Known Corridor Concerns / Opportunities**
- **Focus Stakeholder Corridor Input to Specific Mileposts or Line Segments**
- **Document Our Analysis with the Geospatial Data for Final Corridor Recommendations**

Agency	Agency Jurisdiction	County	Concern	Length of Affected Corridor	Analysis	BLM/FS Review and Analysis
ENERGY PLANNING CONCERNS AND OPPORTUNITIES						
Location-Specific Physical Barrier						
BLM	Las Vegas FO	Clark County, NV	640-ft wide section of 5 transmission lines (1 230 kV, a 500 kV, and three 115 kV) in the former Sunrise Mountain Instant Runoff Facility (IRF) area.	MP 30.2 to 33.4	GIS Analysis	BLM/FS Review and Analysis of the proposed corridor under the appropriations act, Congress released the wildcat restoration study area. The study area is unchanged. BLM is proposing to increase the corridor width from 500 ft. to 3,500 ft.
Jurisdictional Concern						
BLM	Las Vegas FO	Clark County, NV	Patuxent National Wildlife Refuge	Approximately 60 miles north of this corridor. See Corridor 232-233.	Settlement Agreement	No. This refuge is not adjacent the corridor.
BOR	BOR	Clark County, NV	Discontinuous section of corridor includes 2,917 acres of BOR-administered lands that were studied in the WWEC PEIS as part of this corridor, but were not designated.	MP 16.9 to 29.4	GIS Analysis	No. Coordination and authorization from BOR would be required to traverse through this segment.
Inefficient Use of Corridor and Spacing						
BLM	Las Vegas FO, NV	Clark County, NV	Multiple transmission lines and a pipeline cross the corridor at various angles, using it inefficiently.	MP 26.3 to 30.3	GIS Analysis	

Corridor
Sunrise Me

Introduc
Corridor 39-2
Area. Federa
section in the
is designated
23.2 designat
Las Vegas Fie

Corridor F
During scopin
National Grid,
occupying par
Great Basin Tr
following the
transmission l
line in the cor
BLM is curren
Hoover Dam i
MP 7.

Other informa
• Recent ch
• Details fro

Corridor c
Concerns rega
Conservation
Corridor Anal

Corridor A

E
O

L
at



Tools to Facilitate Stakeholder Understanding & Critical Input

✓ *Standing-up a Sec. 368 Energy Corridor Internet Mapper Tool*

Section 368 Energy Corridor Mapping Tool

Disclaimer
Privacy/Security

Reports Print View Abstract

Max Zoom Back Forward Pan Mode Zoom Box Zoom In Zoom Out Info Measure Bookmarks Find a place...

Search for layers by name

By Group

- Boundary
- BLM Development Areas
- Cultural Resource Areas
- Ecological Resource Areas
- Energy Corridor
- Hydrography
- Land Management Information
- Potential Incompatible Land Uses
- Specially Designated Areas
- Visual Resource Areas

Layers

Overlays

- Priority Region
- Sec. 368 Corridor Milepost
- Sec. 368 Corridor Label
- Sec. 368 Designated Corridor Centerline
- Sec. 368 Designated Corridor
- Surface Management Agency Jurisdiction

Bureau of Land Management
 Bureau of Reclamation
 Department of Defense
 Department of Energy
 Local

Corridor Mapping Tool will be used to:

- **Ensure Stakeholder Understanding of Known Corridor Concerns / Opportunities**
- **Facilitate Stakeholder Online Corridor Input to Specific Mileposts or Line Segments**
- **Leverage Our Developed Geospatial Data for the Final Corridor Recommendations**
- ❖ **Identify Corridor Adds, Edits or Deletes to Minimize Constraints and Maximize Opportunities**

Victorville
San Bernardino National Forest
Highland
Redlands
Yucaipa
Riverside
Twentynine Palms
-12027941, 4270270

Section 368 Energy Corridor Regional Review Project - RETI 2.0 Outreach - Sept. 1, 2016

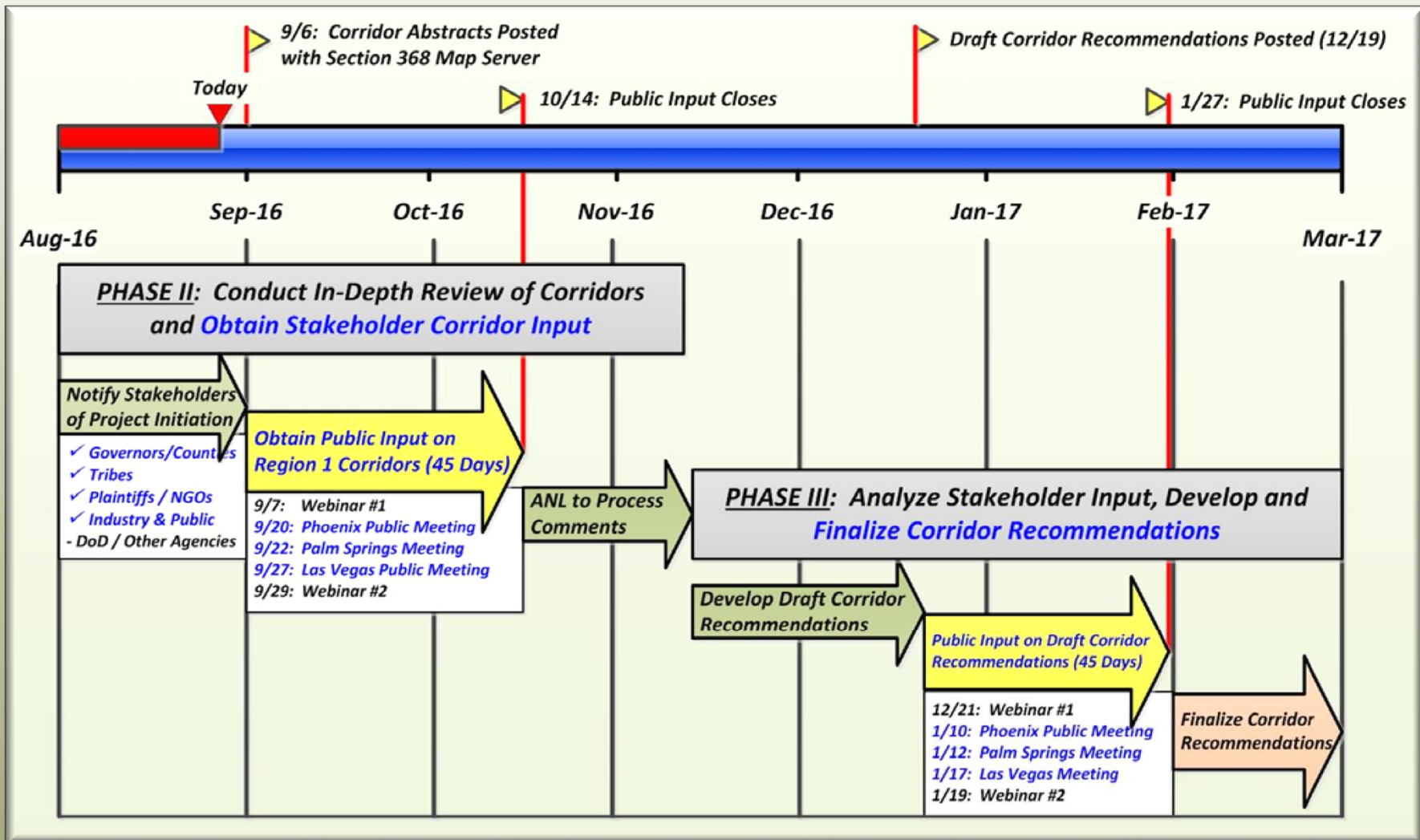


BLM & USFS Desire for Robust Stakeholder Engagement

- ✓ ***Initiated Formal Region 1 Stakeholder Notification with***
 - ✓ ***Governors of AZ, CA and NV***
 - ✓ ***County Commissioners***
 - ✓ ***Tribes and BIA***
 - ✓ ***BLM Resource Advisory Councils***
 - ✓ ***Settlement Plaintiff's / NGOs***
 - ✓ ***Western Electrical Coordinating Council (WECC) [2024/2026 Study Program Spatial Assessment] and the California RETI 2.0 Project***
- ***Initiating Contact with***
 - ***The Department of Defense***
 - ***Industry: Utilities, Transmission / Pipeline Companies, Power Project Generators, Regional Transmission Planning Entities, etc.***
 - ***The General Public***



Region 1 Stakeholder Input Schedule: Phases II & III



❖ **The Same Stakeholder Input Process will be Used for Regions 2-6**



BLM Bodies of Work of Potential Importance to RETI 2.0

- ✓ **Technical Studies**
 - ✓ **Argonne National Lab's Sec. 368 Corridor Study**
 - ✓ **WECC 2014 Study Case on BLM Solar Energy Zones**
 - ✓ **NREL's Study on BLM Southern Nevada Renewable Energy Outlook**
 - **WECC 2016 Special Study for Sec. 368 Energy Corridors. Identify High Utilization WECC Pathways in Proximity to 368 Corridors for**
 - **Coal Retirements**
 - **High RPS**
 - **Low & High Natural Gas Price**
 - **High Distributed Generation (PV)**
 - **High Renewables**
 - **2016 Common Case**



Sec. 368 Energy Corridor - Information Resources

BLM Points of Contact:

- **Georgeann Smale, Sec. 368 Program Lead, WO gsmale@blm.gov**
- **Jim Gazewood, Project Mgr., Regional Reviews Project, WO jgazewoo@blm.gov**
- **Stephen Fusilier, Branch Chief, Rights-of-Way, WO sfusilie@blm.gov**
- **Lucas Lucero, Senior Advisor to AD-300, WO llucero@blm.gov**

Corridor Study Release / 368 Information:

- <http://www.blm.gov/wo/st/en/prog/energy/transmission.html>
- www.blm.gov/so/st/en/prog/energy/transmission.html

Section 368 Comments to:

- [blm wo 368corridors@blm.gov](mailto:blm_wo_368corridors@blm.gov)

West-wide Energy Corridors Information Center Website:

- <http://www.corridoreis.anl.gov>

