

DOCKETED

Docket Number:	15-RETI-02
Project Title:	Renewable Energy Transmission Initiative 2.0
TN #:	212369
Document Title:	Imperial County Presentation
Description:	Imperial County Presentation
Filer:	Eli Harland
Organization:	Imperial County
Submitter Role:	Public Agency
Submission Date:	7/20/2016 3:15:31 PM
Docketed Date:	7/20/2016

RETI 2.0 ENVIRONMENTAL AND LAND USE TECHNICAL GROUP

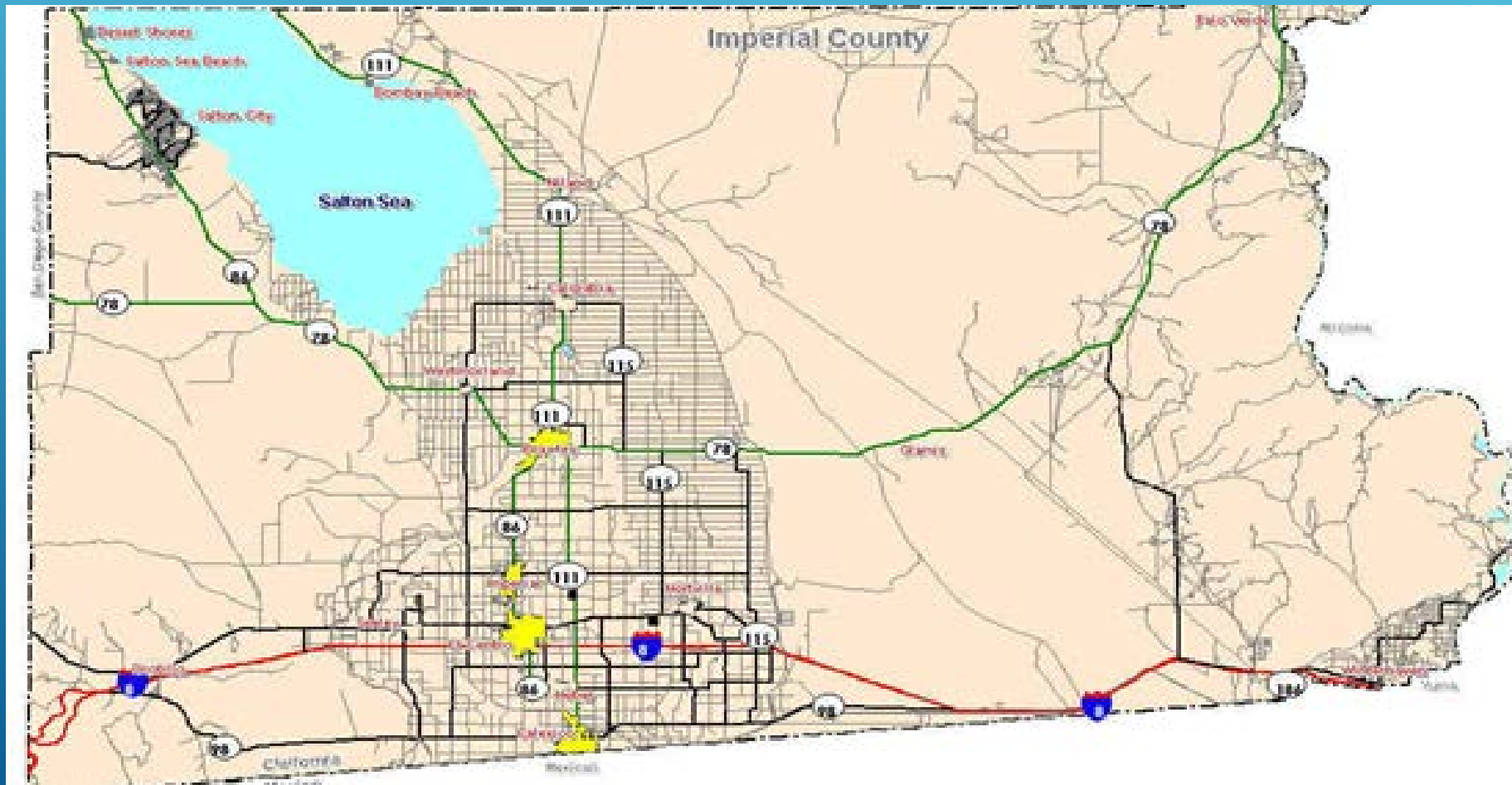
IMPERIAL COUNTY OVERVIEW

July 21, 2016

Andy Horne, Deputy CEO



- IMPERIAL COUNTY EXTENDS OVER 4,597 SQUARE MILES
- LARGEST LAND OWNER IS THE FEDERAL GOVERNMENT
- 18.1% IS IRRIGATED AGRICULTURAL LAND



RENEWABLE ENERGY CONSERVATION AND PLANNING GRANTS – IMPERIAL COUNTY

• RENEWABLE ENERGY & TRANSMISSION ELEMENT	\$700,000
• CONSERVATION & OPEN SPACE ELEMENT	<u>\$400,000</u>
TOTAL CEC INVESTMENT	\$1,100,000

RETE PLANNING PROCESS

- Environmental Baseline Study
- Technical Advisory Group
- Community Participation Program
- Develop Overlay Zone Alternatives
- Preparation Draft & Final Renewable Energy and Transmission Element
- Preparation of Draft & Final Zoning Ordinance
- Prepare Draft & Final Program EIR



RENEWABLE ENERGY & TRANSMISSION ELEMENT

Goal 1 – Support the safe and orderly development of renewable energy while providing for the protection of environmental resources

Goal 2 – Encourage development of electrical transmission lines along routes which minimize potential environmental effects.

Goal 3 – Support development of renewable energy resources that will contribute to and enhance the economic vitality of Imperial County

Goal 4 – Support development of renewable energy resources that will contribute to the restoration efforts of the Salton Sea.

Goal 5 – Encourage development of innovative renewable energy technologies that will diversify Imperial County's energy portfolio.



RENEWABLE ENERGY & TRANSMISSION ELEMENT

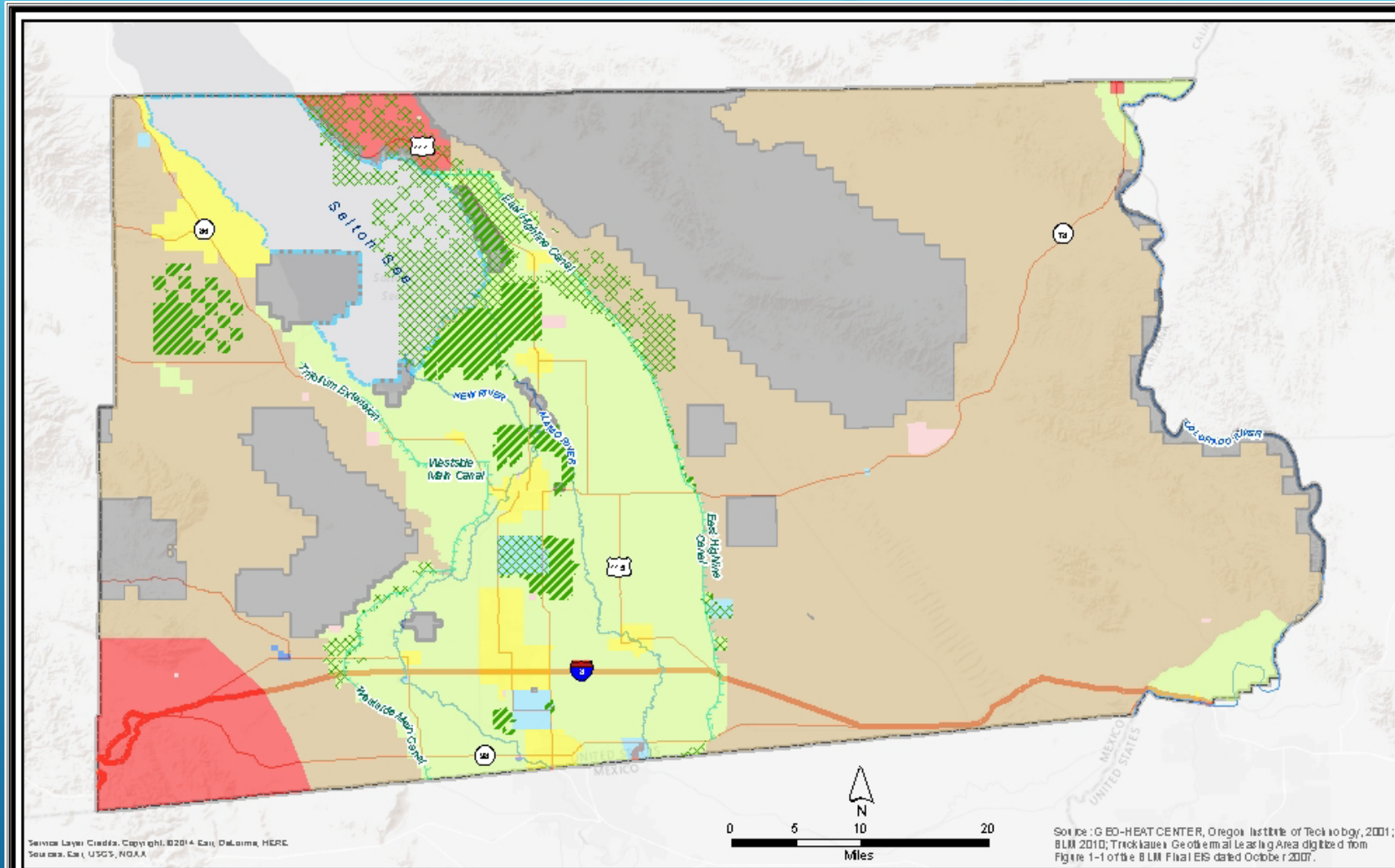
Goal 6 – Support development of renewable energy while providing for the protection of military aviation and operations.

Goal 7 – The County will actively minimize the potential for land subsidence to occur as a result of renewable energy operations.

Goal 8 – The County will develop overlay zones that would facilitate the development of renewable energy resources while preserving and protecting agricultural, natural, and cultural resources. Development of overlay zones shall include coordination with Federal, State, County, Tribal governments,





RENEWABLE ENERGY OVERLAY ZONE


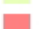




Legend

Overlay Zones (Total Acres)

-  Geothermal (69,146 acres)
-  Renewable Energy/Geothermal (131,650 acres)

Land Use

-  Agriculture
-  Community Area
-  Government/Special Public
-  Industry

Recreation/Open Space






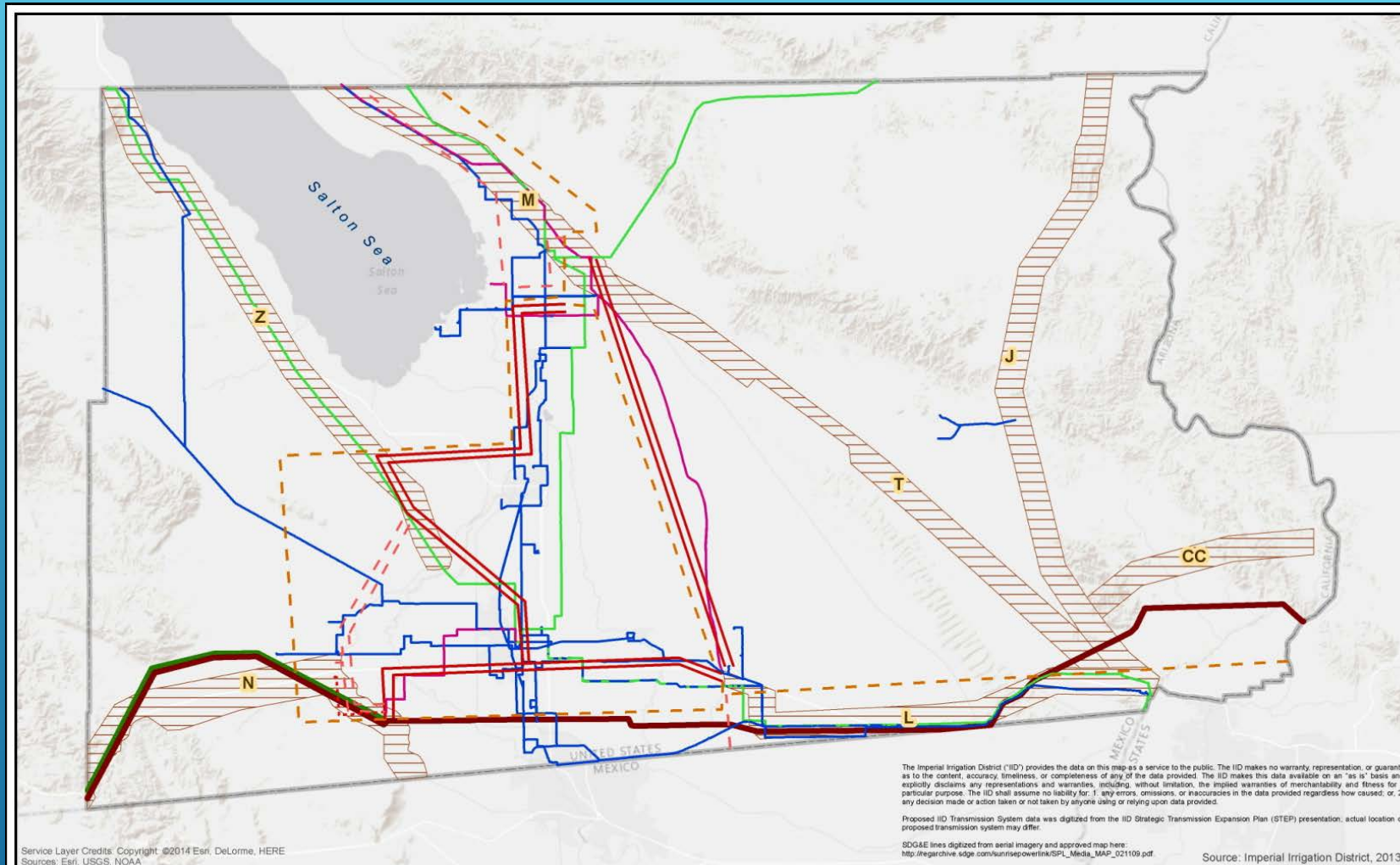
-  Salton Sea
-  Special Purpose Facility
-  Specific Plan Area
-  Urban Area

Figure 2.2-1
Imperial County Renewable Energy
and Transmission Element Update
PEIR
Overlay Zone Map
County Lands

Name: 20674_EIR_Fig 2.2-1_Overlay Zones_Mxd
Date Saved: 6/30/2015, 4:14:07 PM


TRANSMISSION CORRIDORS



Legend

Existing IID Transmission System	Proposed IID Transmission System	Existing SDG&E Transmission System	Federal Transmission System
230 kV Grounded Y	230kV Upgrade	Sunrise Powerlink 500kV	CDCA Corridors
161 kV Grounded Y	230kV Proposed	Southwest Powerlink	
92 kV Grounded Y	230kV PPTO		
	500kV Proposed		

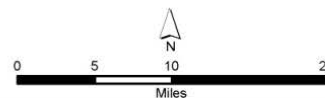


Figure 4
 Existing & Proposed
 Energy Transmission System

RETE PROJECT STATUS

ENVIRONMENTAL IMPACT REPORT CERTIFIED
AND RENEWABLE ENERGY AND TRANSMISSION
ELEMENT UPDATE OF GENERAL PLAN APPROVED
BY IMPERIAL COUNTY BOARD OF SUPERVISORS
ON SEPTEMBER 22, 2015.

Renewable Energy & Conservation Planning Grant - Phase II



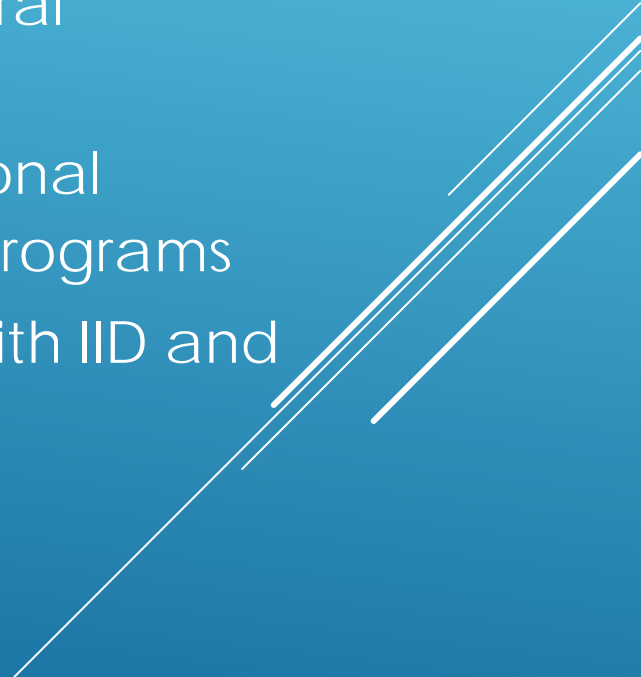
Update of 1993 "Conservation and Open Space
Element"

BASELINE REPORTS AND PUBLIC OUTREACH PROGRAM

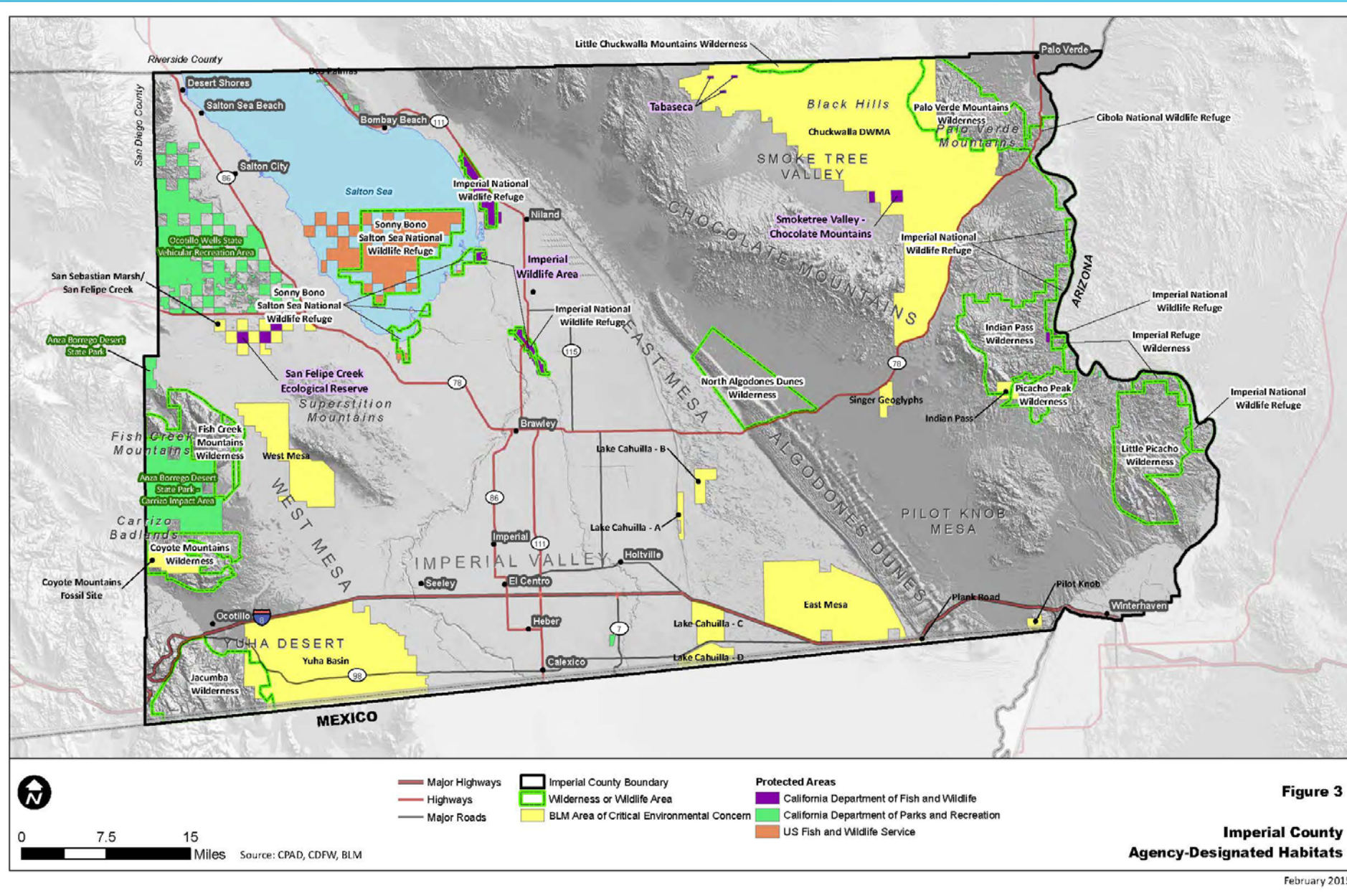
Public Outreach Completed

- Developed an Outreach Program
- Hosted five Public Workshops
- Consulted with Native American Communities

Regulatory Baseline Included

- State and Federal Legislation
 - State and Regional Management Programs
 - Coordination with IID and Other Agencies
- 
-

OPEN SPACE HABITAT MAP



OPEN SPACE SPECIES MAP

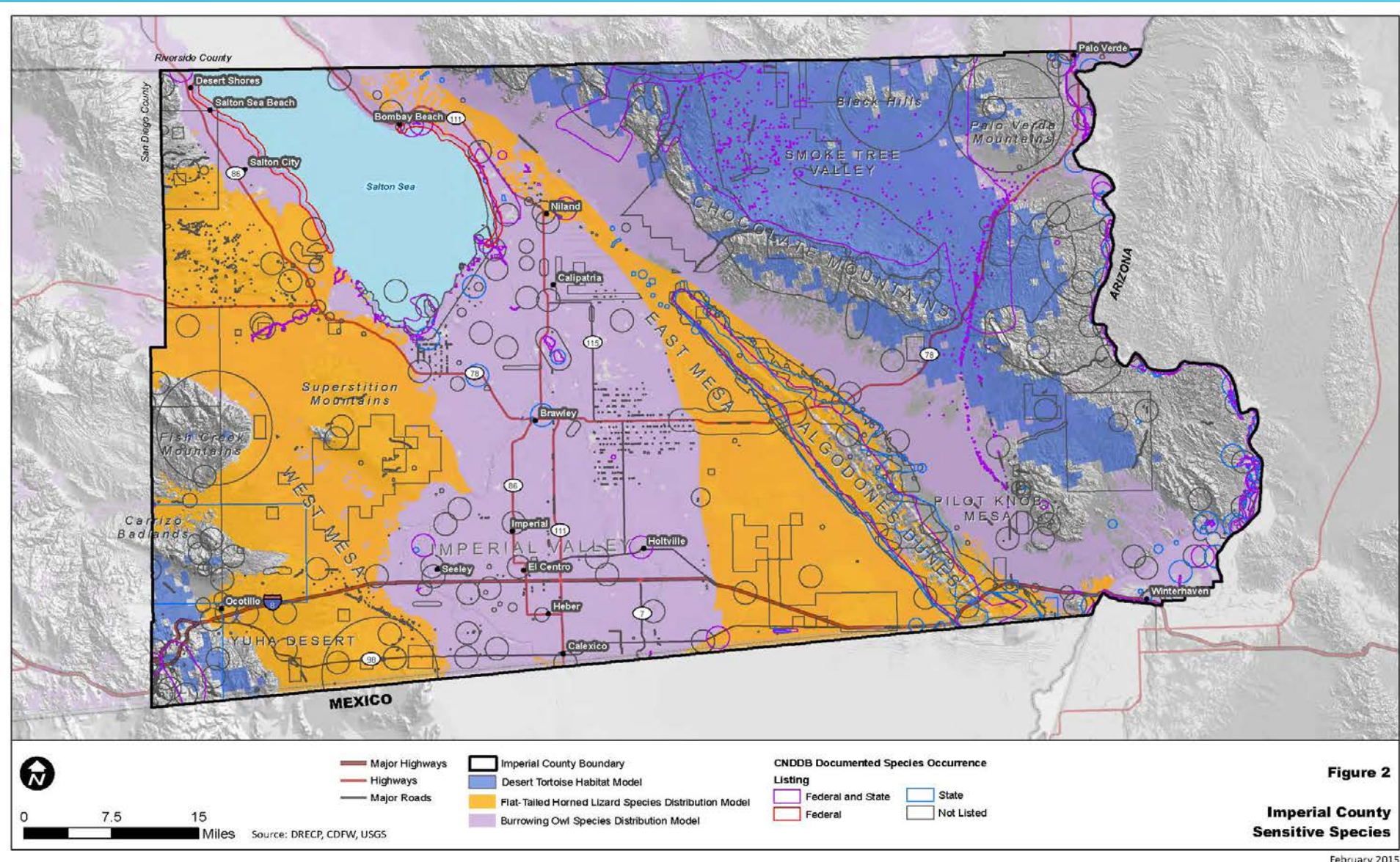


Figure 2

Imperial County Sensitive Species

DRECP PROJECTIONS FOR RENEWABLES FROM IMPERIAL COUNTY

Geothermal	2,500 MW
Other Renewables	4,500 MW
Total	7,000 MW

SOLAR PV PROJECTS

- 29 Projects Approved
- 15 Projects Completed (1,000MW)
- 2,600 – Total MW
- 21,000 ACRES - ALL ON FARMLAND

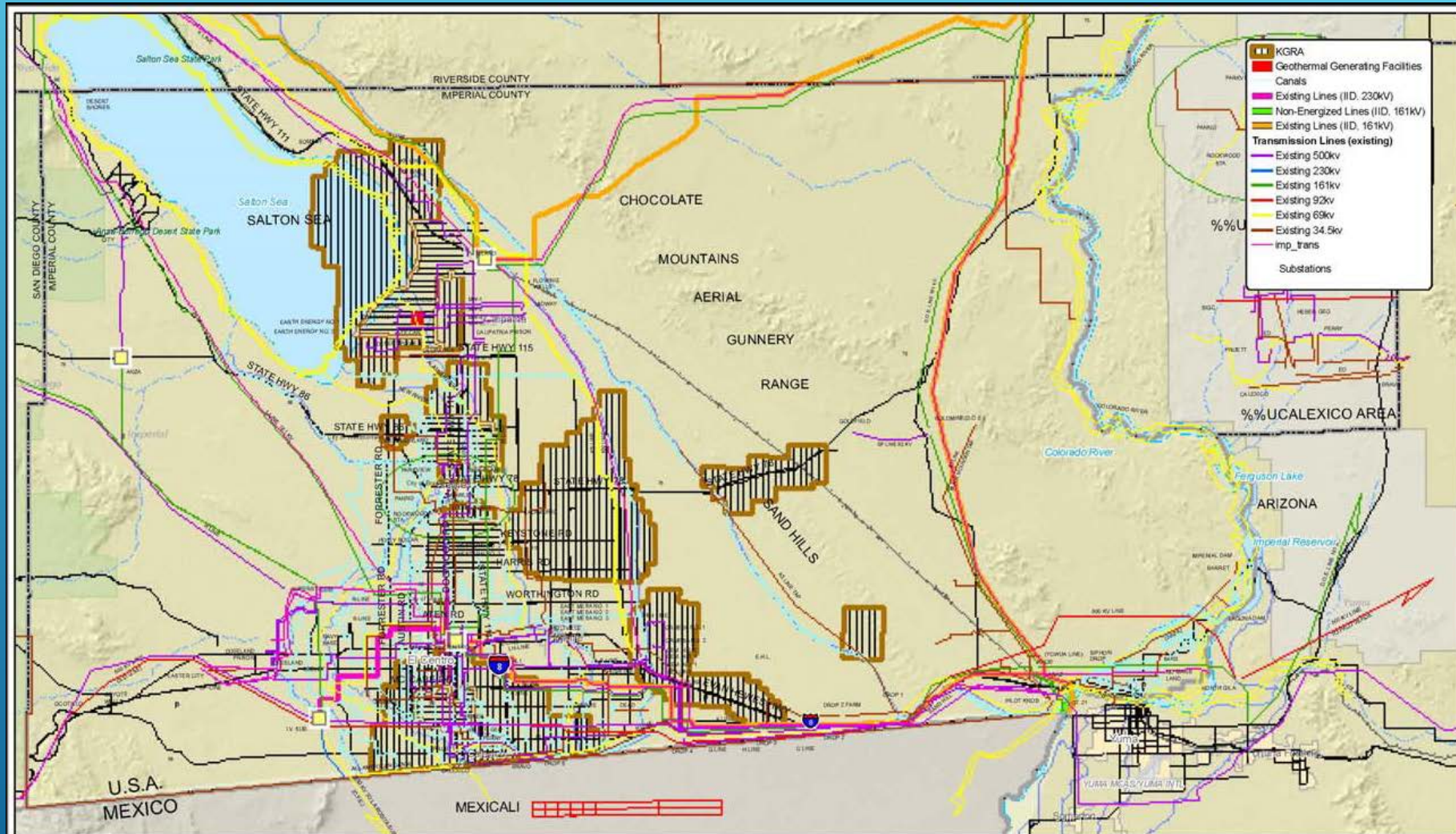


GEOHERMAL ENERGY

- 19 Facilities
- 650 - Total MW



KGRA'S IN IMPERIAL COUNTY



Source: IID, SDGE



Existing County Transmission Corridors and Generation Facilities
Figure 3

ARKANSAS SOLAR PROJECT



ORMAT BRAWLEY NORTH



IMPERIAL COUNTY DEMOGRAPHICS

Unemployment		
	Imperial County	U.S.
	Unemployment Rate	Unemployment Rate
2014	23.6%	5.6%
2015	21.5 %	5.0%

Source: California Employment Development Department (Month of December)

IMPERIAL COUNTY DEMOGRAPHICS

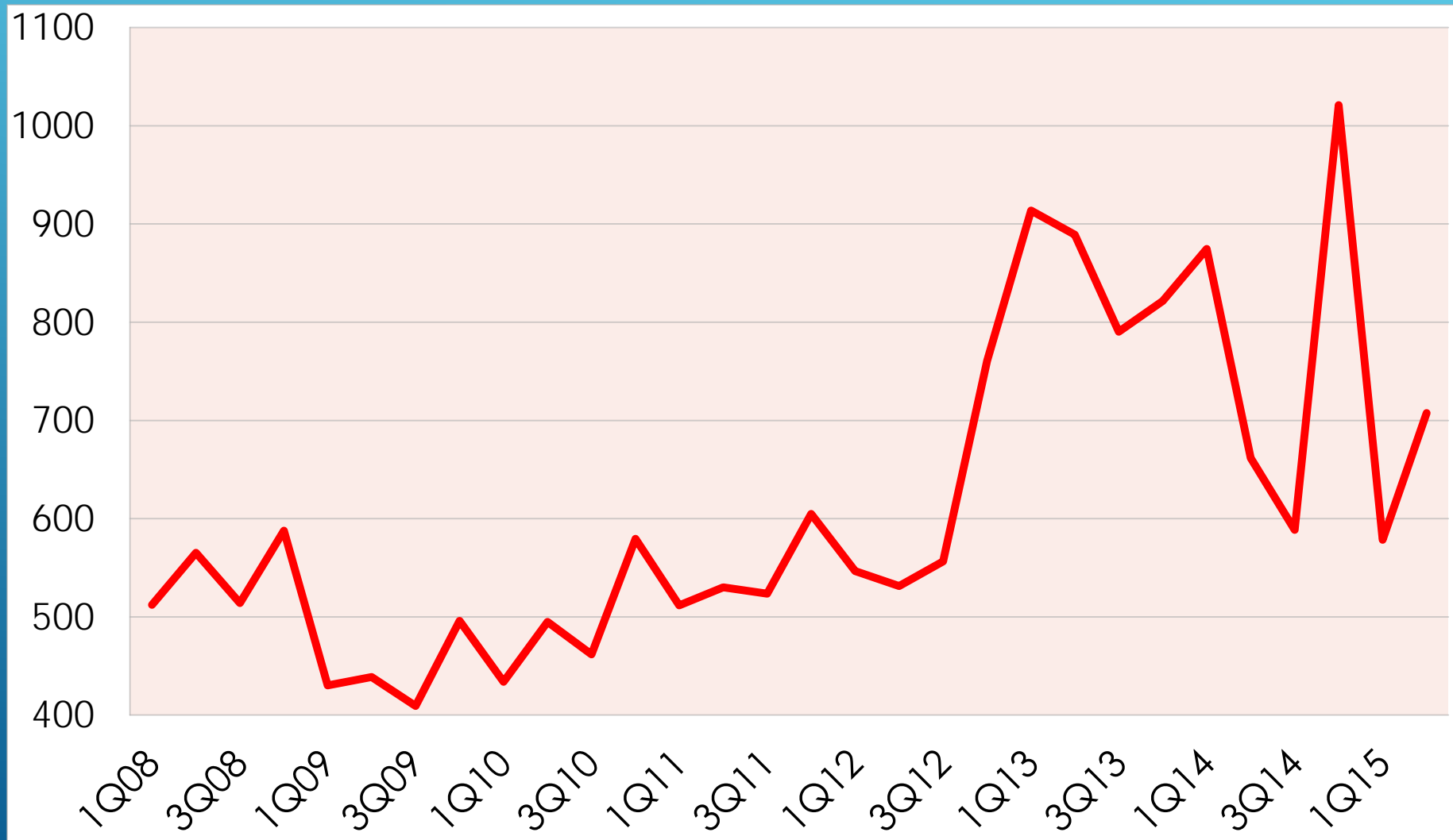
Income and Poverty Levels

	Imperial County	U.S.
Per Capita Income	\$16,226	\$28,889
Population with income below poverty level	23.7%	15.5%

Source: U.S. Census Bureau, 2014 ACS Economic Characteristics 1 Yr Estimates.; 2014 ACS Poverty Status in the Past 12 Mo 1 Yr Estimates

ECONOMIC BENEFITS OF RENEWABLES

TAXABLE SALES (IN MILLIONS OF \$)



THANK YOU.
QUESTIONS?

